



TEREX

TXC 255LC-1

Hydraulic Excavator

OPERATING WEIGHT	54,200 lbs (24,600 kg)
NET ENGINE POWER	162 hp (121 kW) @ 2,000 rpm
MAX DIG DEPTH	22' 3" (6,790 mm)
MAX REACH	33' 7" (10,240 mm)



FEATURES

- Powerful, quiet, fuel efficient, turbocharged USA EPA Tier 2 compliant diesel engine maximizes power output and utilization
- e-EPOS System uses variable displacement piston pumps ensuring high efficiency and lower fuel consumption
- Swing anti-rebound valve assures quick, precise, and smooth directional stops during dumping or cradling
- Exceptional bucket break-out and radial tooth forces for toughest digging
- Spacious, comfortable cab provides excellent visibility and ergonomic operating environment
- Advanced graphic display LCD information monitor panel makes troubleshooting easier, simplifies machine performance record keeping
- Standard equipped 3-switch joystick control and hydraulic piping to boom base facilitate installation of most attachments
- Equipped to maximize operator comfort, efficiency and performance
- More standard features to make this TEREX hydraulic excavator the most productive ever

HYDRAULIC EXCAVATOR
TXC 255LC-1

Specifications

Engine	
Model	DAEWOO DE58TIS
Type	Water-cooled, 4-cycle, direct injection, aspiration, turbocharged, air-to-air intercooled. USA EPA Tier 2 compliant.
No. of cylinders	6
Rated flywheel horsepower	
DIN 6271, net	165 PS (121 kW) @ 2,000 rpm
SAE J1349, net	162 HP (121 kW) @ 2,000 rpm
Piston displacement	353 cu. in. (5,785 cc)
Maximum torque	492 lbf.ft. (666 Nm) @ 1,400 rpm
Bore and stroke	4" x 4.6" (102 mm x 118 mm)
Starting system	24V electric motor
Batteries	2 x 12V x 150 AH

Hydraulic System	
e-EPOS (Electronic Power Optimizing System) allows the operator to maximize work efficiency over a full range of operating conditions and to minimize fuel consumption.	
Hydraulic system assures fully independent and combined operations.	
Automatic 2 speed travel system for high traction force and travel speed.	
Cross-sensing and fuel saving pump system.	
Auto idle system.	
2-Working /2-power mode selection system.	
Computer aided engine-pump control.	
Main pumps	2 variable displacement axial piston pumps.
Max. oil flow	2 x 59 gpm (2 x 224 L/min)
Pilot pump	Gear pump
Max. oil flow	7.9 gpm (30 L/min)
Swing motor	
Relief valve	4,050 psi (279 bar)
Main relief valves	
Boom/Stick/Bucket Normal:	4,690 psi (324 bar)
Power Boost:	4,980 psi (343 bar)
Travel circuit	4,690 psi (324 bar)

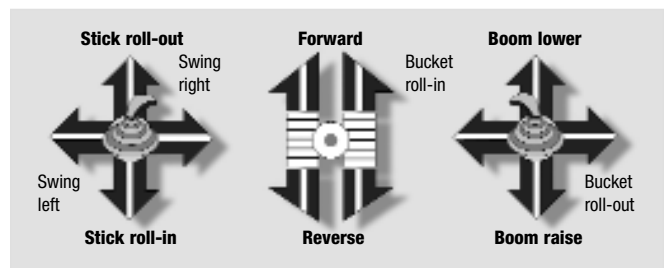
Hydraulic Cylinders			
High-strength piston rods and tubes are used. Cylinder cushion mechanism is provided for all cylinders to minimize shock during operation and extend cylinder component life.			
Cylinders	Qty	Bore x Rod dia x Stroke	
Boom	2	5.1" x 3.5" x 52.0" (130 x 90 x 1,320 mm)	
Stick	1	5.5" x 3.9" x 67.1" (140 x 100 x 1,705 mm)	
Bucket	1	5.1" x 3.5" x 41.3" (130 x 90 x 1,050 mm)	

Superstructure Revolving Frame
Deep full-reinforced box section constructed of heavy gauge steel plates.

Operator's Cab
Cab is independent and roomy. 4 side safety glass windows give excellent visibility. Front window slides up and stores in the roof and side window can be opened for ventilation. Fully adjustable suspension seat. Air conditioner. ISO standard cab.

Noise Levels (dynamic value)	
LwA External noise	
Guaranteed Sound Power Level	105 dB(A) (2,000/14/EC)
Measured Sound Power Level	104 dB(A) (2,000/14/EC)
LpA Operator Noise	74 dB(A) (ISO 6396)

Controls - 2 Implement Levers
Pilot pressure control type. Right lever is boom and bucket control, left lever for swing and stick control.



2 Travel Pedal with Levers
Pilot pressure control type. Independent drive at each track allows counter-rotation of the tracks. Levers are detachable.

Swing Mechanism	
High-torque, axial piston motor with planetary reduction gear in oil bath. Swing assembly is single row, shear type ball bearing with induction-hardened internal gear. Internal gear and pinion gear immersed in lubricant. Swing parking brake is spring-set, hydraulic-released disc type. A two position swing lock secures the superstructure for transportation.	
Swing speed	0 to 10.9 rpm
Rear swing radius	9' 11" (3,035 mm)

Drive	
Each track is driven by an independent, high-torque, axial piston motor through planetary reduction gearing. Two levers or foot pedal control provide smooth travel or counter-rotation upon demand.	
Travel speed (High/Low)	3.2/1.9 mph (5.1/3.0 km/h)
Maximum traction force	46,520 lbf (207 kN)
Gradeability	35° (70%) continuous

Brakes
Two oil disc brakes outboard mounted on final drive input shafts. Parking brake is spring-set, hydraulic-released disc type.

Specifications

Undercarriage

Tractor type undercarriage. Heavy-duty track frame, all welded stress-relieved structure. The highest grade materials are used for toughness. Side frames are welded, securely and rigidly, to the track frame. Lifetime-lubricated track rollers, idlers and sprockets with floating seals reduce field service requirements. Track shoes of induction-hardened rolled alloy with triple grousers ensure long life under the harshest applications. Specially heat-treated connecting pins reduce wear. Hydraulic track adjusters with shock-absorbing recoil springs are standard.

Number of rollers and shoes (each side) ground contact area

Upper rollers 2

(Standard Shoe)

Lower rollers 10

Track shoes 51

Overall track length 15' 2" (4,635 mm)

Weight

Equipped with 19' 4" (5.9 m) boom, 9' 10" (3.0 m) stick, and 1.44 yd³; PCSA heaped (1.1 m³) bucket.

Shoe type	Shoe width	Operating weight	Ground pressure
Triple grouser	24" (600 mm)	54,200 lb. (26,600 kg)	7.0 psi (48 kpa)
Triple grouser	32" (800 mm)	55,600 lb. (25,200 kg)	5.4 psi (37 kpa)
Triple grouser	36" (900 mm)	56,200 lb. (25,500 kg)	4.8 psi (33 kpa)

Standard Equipment

Hydraulic System

Boom and stick flow regeneration • Boom and stick holding valves
• Swing anti-rebound valves • Spare ports (valve) • One-touch power boost

Cab and Interior

All weather sound suppressed cab with suspension type mounts
• Air conditioner (heavy duty) and heater/ defroster • Adjustable suspension seat with head rest and adjustable arm rest • Pull-up type front window and removable lower front window with storage brackets in cab • Roof hatch/cover • Cab light • Intermittent windshield wiper
• Cigar lighter and ashtray • Cup holder • Hot and cold storage container
• Graphic LCD display monitor • Fuel consumption controller • AM/FM Radio and cassette player • Remote radio ON/OFF switch • 12V spare power socket • Serial communication port for laptop PC interface
• Joystick levers with 3 switches

Other

Large handrails and steps • Punched grid-type metal anti-slip upperstructure plates • Seat belt • Sun roof (hatch) • Hydraulic safety

Service Refill Capacities

	U.S. gal	Liters
Fuel tank	97.8	370
Cooling system	9.5	36
Lubrication	U.S. gal	Liters
Engine oil	5.0	19
Swing drive (each)	2.9	11
Final drive (each)	1.3	5
Hydraulic system	76.6	290
Hydraulic tank	40.9	155

Buckets

Capacity PCSA heaped	Width		Weight	Stick Recommendation	
	without side cutters	with side cutters		9' 10" (3.0 m)	11' 6" (3.5 m)
0.65 yd ³ (0.5 m ³)	27" (688 mm)	31" (778 mm)	1,800 lb. (530 kg)	A	A
1.06 yd ³ (0.81 m ³)	42" (1,058 mm)	51" (1,168 mm)	1,520 lb. (690 kg)	A	A
1.22 yd ³ (0.93 m ³)	46" (1,180 mm)	51" (1,290 mm)	1,610 lb. (730 kg)	A	A
1.37 yd ³ (1.05 m ³)	51" (1,302 mm)	56" (1,412 mm)	1,740 lb. (790 kg)	B	C
1.44 yd ³ (1.1 m ³)	50" (1,260 mm)	54" (1,370 mm)	1,800 lb. (815 kg)	A	A
1.53 yd ³ (1.17 m ³)	56" (1,428 mm)	61" (1,538 mm)	1,830 lb. (830 kg)	B	C
1.69 yd ³ (1.05 m ³)	61" (1,560 mm)	66" (1,670 mm)	1,950 lb. (885 kg)	B	C

- A. Suitable for materials with density of 3,370 lb./cu.yd. (2,000 kg/m³) or less
B. Suitable for materials with density of 2,700 lb./cu.yd. (1,600 kg/m³) or less
C. Suitable for materials with density of 1,850 lb./cu.yd. (1,100 kg/m³) or less

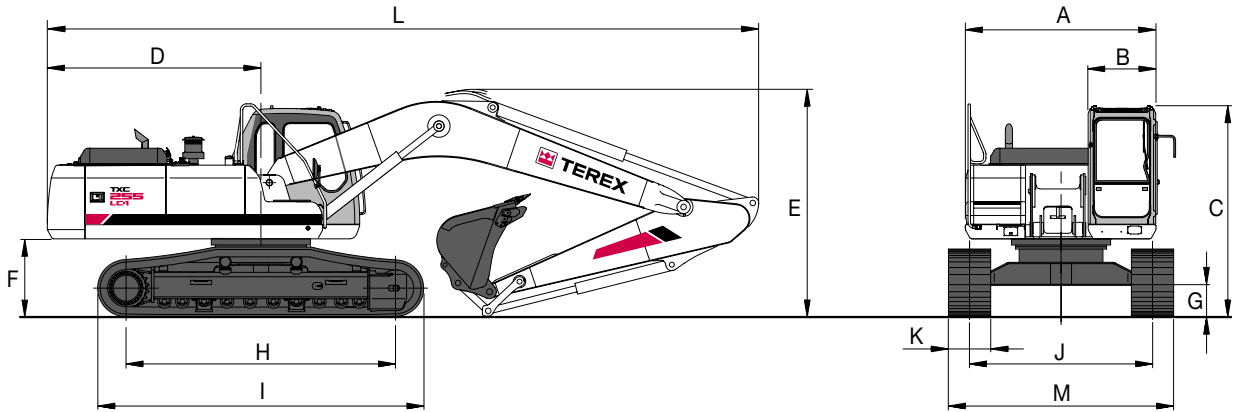
lock lever • Safety glass • Manual hammer mounted in cab for emergency use • Right and left rearview mirrors • Travel alarm • Heavy-duty fan guard • Dual element air cleaner • Pre-cleaner • Water separator • Double fuel filter • Radiator dust screen • Engine overheat prevention system • Engine restart prevention system • Self-diagnostic system • Heavy-duty alternator (24V, 80 amps) • Electric horn • Halogen working lights (frame mounted 2, boom mounted 2) • Hydraulic track adjuster • Sealed and greased track links • Track guards

Optional Equipment

Sun visor • Cab top/front guard (ISO 10262, FOGS standard) • Rotating beacon • Piping for hammer (one way) • Piping for optional implement rotation • Additional work lights on the cab (2 front lamps, 4 front and 2 rear lamps) • Electric fuel supply pump

Hydraulic Excavator TXC 255LC-1

Dimensions: 19' 4" (5.7 m) Boom, 9' 10" (3.0 m) Stick, 24" (600 mm) Shoe



Dimensions

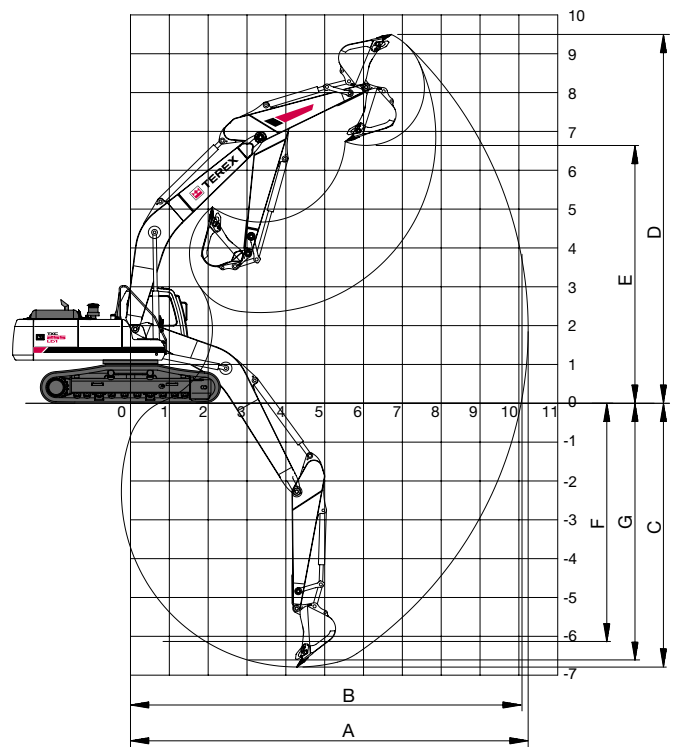
A Overall width of upperstructure	8' 11" (2,710 mm)
B Overall width of cab	3' 2" (960 mm)
C Overall height of cab	9' 10" (3,000 mm)
D Tail swing radius	9' 11" (3,035 mm)
E Overall height	10' 8" (3,250 mm)
F Clearance under counterweight	3' 8" (1,110 mm)
G Ground clearance	18" (450 mm)
H Tumbler distance	12' 7" (3,830 mm)
I Track length	15' 2" (4,635 mm)
J Track gauge	8' 6" (2,600 mm)
K Track shoe width	24" (600 mm)
L Overall length	33' 2" (10,110 mm)
M Overall track width with 24" (600 mm) shoe	10' 6" (3,200 mm)

Digging Forces (Maximum radial tooth forces)

Stick	9' 10" (3.0 m)	11' 6" (3.5 m)
Bucket digging force*	33,500 lbf (149 kN)	33,500 lbf (149 kN)
Stick digging force*	26,000 lbf (116 kN)	24,400 lbf (109 kN)

*At power boost

Working Ranges



Boom Length: 19' 4" (5.9 m)

Stick length	9' 10" (3.0 m)	11' 6" (3.5 m)
A. Max. digging reach	33' 7" (10,240 mm)	35' 2" (10,710 mm)
B. Max. digging reach at ground level	33' (10,060 mm)	34' 7" (10,540 mm)
C. Max. digging depth	22' 3" (6,790 mm)	23' 11" (7,290 mm)
D. Max. digging height	31' 2" (9,500 mm)	31' 11" (9,720 mm)
E. Max. dumping height	21' 9" (6,640 mm)	22' 6" (6,860 mm)
F. Max. vertical wall digging depth	19' 11" (6,080 mm)	21' 6" (6,560 mm)
G. Max. digging depth (8' level)	21' 9" (6,620 mm)	23' 5" (7,140 mm)

Lifting Capacities

Boom: 19' 4" Stick: 9' 10" Bucket: PCSA 1.44 yd ³ Shoe: 32" Weight: 55,638 lbs.											
Reach											unit: 1000 lb.
Height	10ft F	10ft S	15ft F	15ft S	20ft F	20ft S	25ft F	25ft S	Max. F	Max. S	Reach (ft)
25 ft									*8.02	*8.02	@22.48
20 ft							*9.76	*9.76	*7.95	*7.95	@25.89
15 ft					*12.62	*12.62	*11.78	9.74	*8.23	8.00	@28.01
10 ft	*30.44	*30.44	*19.19	*19.19	*15.01	13.47	*12.95	9.47	*8.80	7.36	@29.11
5 ft	*13.84	*13.84	*23.98	19.93	*17.47	12.91	14.03	9.19	*9.73	7.13	@29.33
0 ft	*16.40	*16.40	*26.87	19.22	*19.31	12.49	13.78	8.97	11.18	7.28	@28.67
-5 ft	*23.98	*23.98	*27.59	18.97	19.28	12.29	13.67	8.86	12.14	7.89	@27.08
-10 ft	*34.86	*34.86	*26.28	19.05	19.30	12.31			14.29	9.27	@24.36
-15 ft	*31.68	*31.68	*22.37	19.43	*15.89	12.62			*15.81	12.56	@20.06

Boom: 19' 4" Stick: 9' 10" Bucket: PCSA 1.44 yd ³ Shoe: 36" Weight: 55,980 lbs.											
Reach											unit: 1000 lb.
Height	10ft F	10ft S	15ft F	15ft S	20ft F	20ft S	25ft F	25ft S	Max. F	Max. S	Reach (ft)
25 ft									*8.02	*8.02	@22.48
20 ft							*9.76	*9.76	*7.95	*7.95	@25.89
15 ft					*12.62	*12.62	*11.78	9.79	*8.23	8.05	@28.01
10 ft	*30.44	*30.44	*19.19	*19.19	*15.01	13.55	*12.95	9.53	*8.80	7.40	@29.11
5 ft	*13.84	*13.84	*23.98	20.05	*17.47	12.99	14.11	9.25	*9.73	7.18	@29.33
0 ft	*16.40	*16.40	*26.87	19.33	*19.31	12.57	13.87	9.02	*11.21	7.33	@28.67
-5 ft	*23.98	*23.98	*27.59	19.08	19.40	12.37	13.76	8.92	12.22	7.94	@27.08
-10 ft	*34.86	*34.86	*26.28	19.16	*19.32	12.39			14.38	9.33	@24.36
-15 ft	*31.68	*31.68	*22.37	19.54	*15.89	12.69			*15.81	12.64	@20.06

Boom: 19' 4" Stick: 11' 6" Bucket: PCSA 1.22 yd ³ Shoe: 32" Weight: 55,711 lbs.													
Reach													unit: 1000 lb.
Height	10ft F	10ft S	15ft F	15ft S	20ft F	20ft S	25ft F	25ft S	30ft F	30ft S	Max. F	Max. S	Reach (ft)
25 ft											*6.88	*6.88	@24.39
20 ft							*10.07	10.04			*6.80	*6.80	@27.57
15 ft							*10.97	9.85			*6.99	*6.99	@29.56
10 ft			*17.41	*17.41	*13.98	13.60	*12.24	9.55	*8.96	7.04	*7.41	6.80	@30.61
5 ft	*19.37	*19.37	*22.54	20.11	*16.62	12.98	*13.67	9.22	*10.51	6.89	*8.10	6.59	@30.82
0 ft	*17.29	*17.29	*26.05	19.24	*18.74	12.49	13.77	8.95	*9.94	6.77	*9.19	6.70	@30.19
-5 ft	*22.66	*22.66	*27.43	18.86	19.21	12.22	13.60	8.80			*10.96	7.19	@28.68
-10 ft	*31.42	*31.42	*26.79	18.84	19.15	12.17	13.61	8.81			12.75	8.27	@26.14
-15 ft	*34.36	*34.36	*23.82	19.13	*17.32	12.38					*14.87	10.67	@22.19
-20 ft			*16.43	*16.43							*15.32	*15.32	@15.81

Notes:

1. Ratings are based on SAE J1097
2. Load point is the hook on the back of the bucket.
3. *Rated loads are based on hydraulic capacity.
4. Rated loads do not exceed 87% of hyd. capacity or 75% of tipping capacity.



F = Rating over front



S = Rating over side or 360 degree

0 = Ground



Hydraulic Excavator TXC 255LC-1

Lifting Capacities

Boom: 19' 4" Stick: 11' 6" Bucket: PCSA 1.22 yd ³ Shoe: 36" Weight: 56,053 lbs.													
Reach											unit: 1000 lb.		
Height	10ft F	10ft S	15ft F	15ft S	20ft F	20ft S	25ft F	25ft S	30ft F	30ft S	Max. F	Max. S	Reach (ft)
25 ft											*6.88	*6.88	@24.39
20 ft							*10.07	*10.07			*6.80	*6.80	@27.57
15 ft							*10.97	9.90			*6.99	*6.99	@29.56
10 ft			*17.41	*17.41	*13.98	13.68	*12.24	9.60	*8.96	7.09	*7.41	6.84	@30.61
5 ft	*19.37	*19.37	*22.54	20.23	*16.62	13.06	*13.67	9.28	*10.51	6.94	*8.10	6.64	@30.82
0 ft	*17.29	*17.29	*26.05	19.35	*18.74	12.57	13.86	9.01	*9.94	6.81	*9.19	6.75	@30.19
-5 ft	*22.66	*22.66	*27.43	18.97	19.33	12.30	13.69	8.85			*10.96	7.24	@28.68
-10 ft	*31.42	*31.42	*26.79	18.95	19.27	12.25	13.70	8.86			12.84	8.33	@26.14
-15 ft	*34.36	*34.36	*23.82	19.24	*17.32	12.45					*14.87	10.74	@22.19
-20 ft			*16.43	*16.43							*15.32	*15.32	@15.81

Notes:

1. Ratings are based on SAE J1097
2. Load point is the hook on the back of the bucket.
3. *Rated loads are based on hydraulic capacity.
4. Rated loads do not exceed 87% of hyd. capacity or 75% of tipping capacity.

-  F = Rating over front
 S = Rating over side or 360 degree
 0 = Ground



TEREX Construction Americas

8800 Rostin Road
Southaven, MS 38671
USA

TEL 662-393-1800
SALES 866-837-3923
PARTS & TECH SUPPORT 888-201-6008
FAX 662-393-1700
EMAIL sales@terexca.com
WEB terexca.com

For more information, product demonstration, or details on purchase, lease and rental plans, please contact your local TEREX Distributor.