



OPERATING WEIGHT	18,522 – 19,400 lbs (8,401 – 8,799 kg)
NET ENGINE POWER	72 hp (SAE J 1349) (53 kW)
MAX DIG DEPTH	13' 4" (4.1 m)
MAX REACH	26' 6" (8.1 m)



HML32 MOBILE EXCAVATOR



Infinitely variable speed Hydrostatic Drive

Working hydraulic system independent of travel system

Standard auxiliary hydraulic circuits

Standard Quick-attach

Large cab design for "full size" operators

Monoblock boom cylinder mounted on top for maximum protection

Excellent maintenance access

ENGINE

Manufacturer	Deutz	
Type	4-cylinder, turbocharged diesel engine	
Combustion	4-stroke, direct injection	
Displacement	195 in ³	(3.2 L)
Net power rating at 2,000 rpm (SAE J 1349)	72 hp	(53 kW)
Cooling system	water	

ELECTRICAL SYSTEM

Operating voltage	12 V	
Battery	12 V / 105 Ah / 450 A	

POWER TRANSMISSION

Hydrostatic drive with automatic adjustment of drawbar pull and speed. 4-wheel drive from reduction gear on front axle via cardan shaft to rear axle. Infinitely variable speed control forward and reverse in 2 speed ranges:

Working speed	0 - 3.7 mph	(0 - 6 km/h)
Travel speed	0 - 12.4 mph	(0 - 20 km/h)

AXLES

Front axle: oscillating planetary drive axle.	
Oscillating angle	11.5°
Rear axle: rigid planetary drive axle.	

TIRES

Standard	8.25-20 12 PR
----------	---------------

BRAKES

Service brake: hydraulic dual-circuit pump accumulator brake, acting on oil-immersed multi-disc brakes of front and rear axles.

Excavator brake: acting on front and rear axles through lockable service brake.

Auxiliary brake: Hydrostatic drive provides dynamic braking.

Parking brake: Hydraulic spring-loaded brake, electrically controlled.

STEERING

Fully hydraulically controlled front axle with integrated steering cylinder.	
Max. steering angle	32°

SWING SYSTEM

Hydrostatic drive with 2-stage planetary gear and axial piston motor, also provides dynamic braking. Additionally, an automatically controlled spring-loaded multi-disc brake acting as parking brake.

Swing speed	0-10 rpm
-------------	----------

HYDRAULIC SYSTEM

Travel hydraulics: Closed circuit, independent from working hydraulics.

Max. pump capacity	29.6 gpm at 6,090 psi	(134.6 L/min at 420 bar)
--------------------	-----------------------	--------------------------

Working hydraulics: Axial piston pump with load-sensing, coupled with a load-independent flow division (LUDV). Simultaneous, independent control of all actions. Sensitive actions irrespective of loads.

Max. pump capacity	37.5 gpm	(170.5 Lpm)
Max. working pressure	4,060 psi	(280 bar)

Triple gear pump for all positioning functions and swing movements.

Pump capacity	8.7 + 5.0 + 3.4 gpm at 3,335 psi	(33 + 19 + 13 Lpm at 230 bar)
---------------	----------------------------------	-------------------------------

Control circuit for work attachments:

Max. working pressure	4,060 psi	(281 bar)
Pump capacity, adjustable	5.3 - 26.4 gpm	(24.1 - 120 Lpm)

OPERATING DATA (WITH STANDARD ATTACHMENTS)

Operating weight (SAE J 732)		
with monobloc boom	18,522 lbs	(8,401 kg)
with two-piece articulated boom "TPA"	18,963 lbs	(8,601 kg)
with Circular boom	19,400 lbs	(8,799 kg)
with single tires	- 970 lbs	(- 440 kg)
with blade support	+ 221 lbs	(+ 100 kg)
Overall length in travel position, monobloc boom	17' 8"	(5.4 m)
Overall length in travel position, "TPA"	18' 1"	(5.4 m)
Overall length in travel position, Circular boom	17' 11"	(5.5 m)
Overall height	13'	(4.0 m)
Overall length in transport position, monobloc boom	21' 5"	(6.5 m)
Overall length in transport position, "TPA"	20' 1"	(6.1 m)
Overall length in transport position, Circular boom	21' 11"	(6.7 m)
Total width (twin tires)	8"	(2.5 m)
Tread width	6' 4"	(1.9 m)
Wheel base	7' 4"	(2.2 m)
Ground clearance below cardan shaft	16"	(400 mm)
Turning radius (approximately)	22'	(6.7 m)
Uppercarriage tailswing	4' 11"	(1.5 m)
Breakout force (SAE J 1179)	11,570 lbf	(51,465 N)
Ripping force	9,585 lbf	(42,636 N)
Ripping force (SAE J 1179)	9,450 lbf	(42,035 N)

KNICKMATIK®

Lateral parallel adjustment at total digging depth.

Angle of artic. /Lateral adjustment to the left	53° / 2' 10"	(53° / 870 mm)
---	--------------	----------------

Angle of artic. /Lateral adjustment to the right	67° / 3' 3"	(67° / 990 mm)
--	-------------	----------------

CAB

Sound-insulated, rubber-mounted full-vision steel cab, completely tiltable to the front. Safety glass windows, skylight, front window supported by pneumatic springs. Cab heating with windshield defroster via hot water heat exchanger with 3-setting fan. Fresh air / recirculating air system, fresh air filter.

Hydraulically cushioned comfort seat with armrests and longitudinal, height and tilt adjustments. Operator control levers adjustable in longitudinal position. Instrument panel with safety module. Working floodlights Halogen E-3.

Noise emission ambient L _{WA}	97 dB (A)
--	-----------

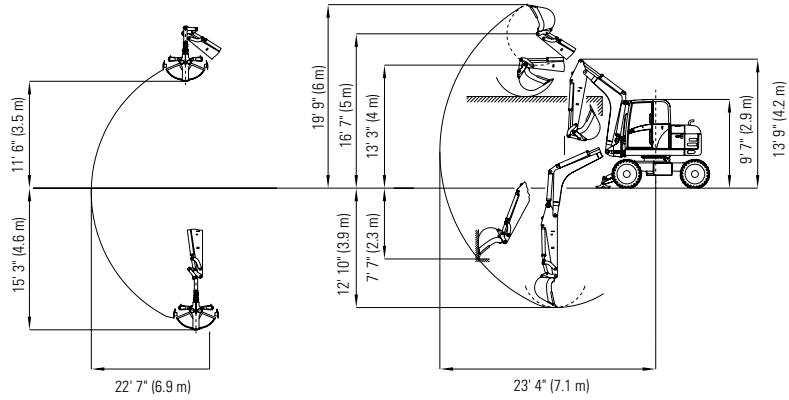
Noise emission cab L _{PA}	74 dB (A)
------------------------------------	-----------

Determined according to EEC-directive 86/662.

FLUID CAPACITIES

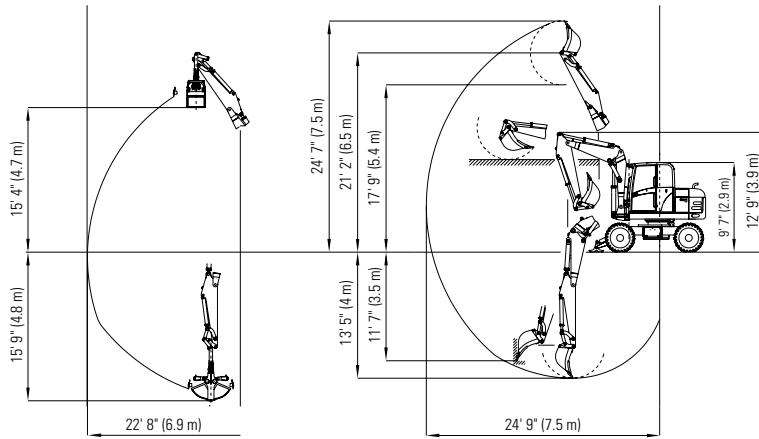
Diesel tank capacity	50 gal	(190 L)
Hydraulic system (including tank)	50 gal	(190 L)

HML32 MONOBLOC BOOM (ALL DIMENSIONS REFER TO TIRES 8.25.20)



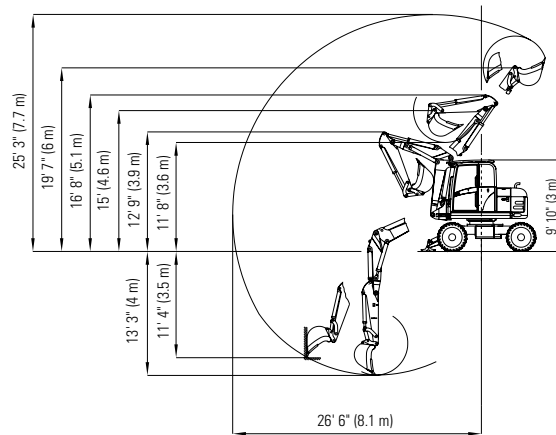
Work equipment:
Monobloc boom with dipperstick 6' 6" (2 m)

HML32 TWO PIECE ARTICULATED BOOM "TPA"



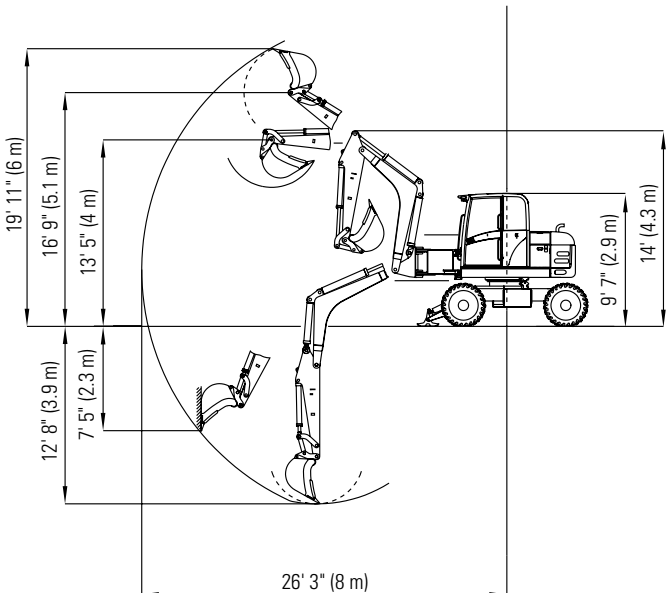
Work equipment:
Two-piece articulated boom with dipperstick: 6' 6" (2 m)

HML32 CIRCULAR BOOM



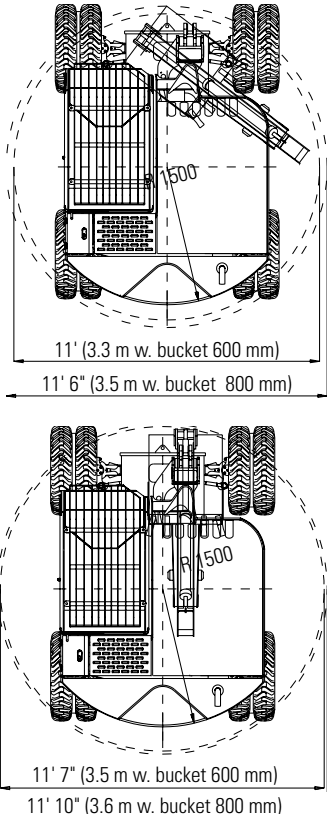
Work equipment:
Circular boom with dipperstick: 5' 4" (1.65 m)

HML32 OFFSET BOOM

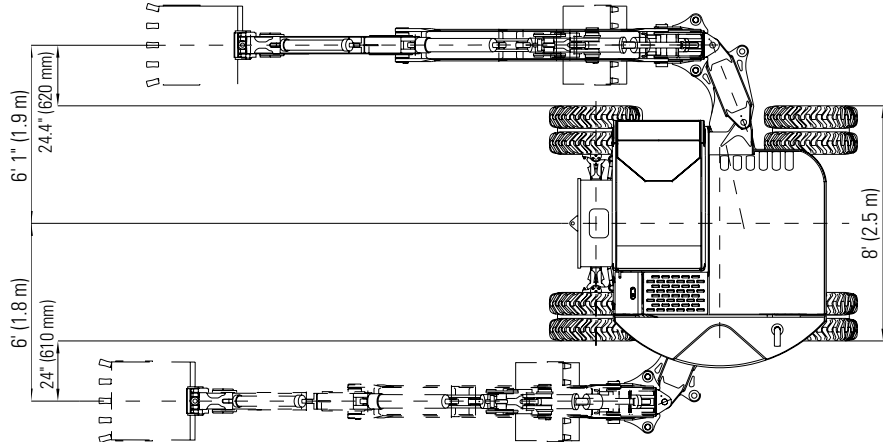


Work equipment:
 Offset boom 2' 9" (850 mm) with monobloc boom / dipperstick 6' 6" (2 m)

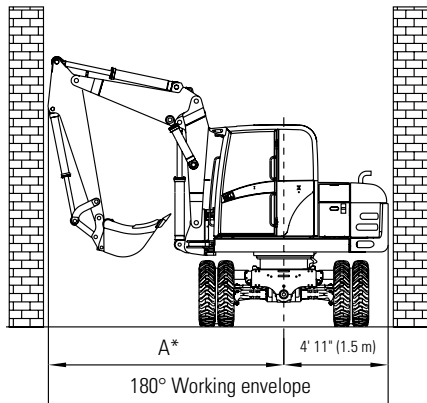
HML32 CIRCULAR-SLEW CIRCLE



HML32 OFFSET BOOM/TOP VIEW



HML32 SLEW CIRCLE



	MB	TPA	CB
Dim. A*	10' (3 m)	9' 9" (3 m)	5' 6" (1.7 m)
180° circle	14' 11" (4.5 m)	14' 8" (4.4 m)	10' 5" (3.2 m)
360° circle	20' (6 m)	19' 5" (5.9 m)	10' 11" (3.3 m)

Work equipment:

MB = Monobloc boom, TPA = Two-piece articulated boom, CB = Circular boom

LIFT CAPACITIES

ENGLISH Measurements

Unit: 1,000 lbs

Load radius from the center of the ring gear

Height of hook		9' 10"		13' 11"		16' 4"		19' 8"	
		End	Side	End	Side	End	Side	End	Side
9' 10"	Supported	—	—	5.26	4.38	3.68	3.17	3.39	2.20
	Traveling	—	—	4.03	4.18	2.88	2.97	1.91	2.07
4' 11"	Supported	8.24	6.28	4.91	4.16	4.21	2.97	4.21	2.13
	Traveling	5.71	5.99	3.68	3.98	2.57	2.77	1.85	1.98
0	Supported	9.56	6.17	5.75	3.81	4.36	2.77	3.50	2.09
	Traveling	5.22	5.73	3.39	3.61	2.42	2.62	1.76	1.91
3' 3"	Supported	1.00	5.79	6.19	3.76	4.71	2.68	3.13	1.98
	Traveling	5.01	5.48	3.24	3.50	2.33	2.51	1.71	1.87

METRIC Measurements

Unit: Metric tons

Load radius from the center of the ring gear

Height of hook		3.0 m		4.0 m		5.0 m		6.0 m	
		End	Side	End	Side	End	Side	End	Side
3.0 m	Supported	—	—	2.39	1.99	1.67	1.44	1.54	1.00
	Traveling	—	—	1.83	1.90	1.31	1.35	0.87	0.94
1.5 m	Supported	3.74	2.85	2.23	1.89	1.91	1.35	1.91	0.97
	Traveling	2.59	2.72	1.67	1.79	1.17	1.26	0.84	0.90
0	Supported	4.34	2.80	2.61	1.73	1.98	1.26	1.59	0.95
	Traveling	2.37	2.60	1.54	1.64	1.10	1.19	0.80	0.87
- 1.0 m	Supported	2.63	2.81	1.71	2.14	1.22	1.42	0.90	
	Traveling	2.30	2.49	1.47	1.59	1.06	1.14	0.78	0.85

All values in lbs x 1,000 and metric tons (t) were determined according to SAE J 1097 and include a stability factor of 1.33 or 87% of the hydraulic lifting capacity. In each case, the smaller value is indicated. All values were determined with load hook. In the event of an attached bucket the difference weights bucket minus load hook must be deducted from the permissible payloads. When used for crane operations, excavators must be equipped with hose-rupture safety valves and overload warning device.



OPERATING WEIGHT 18,522 – 19,400 lbs (8,401 – 8,799 kg)
NET ENGINE POWER 72 hp (SAE J 1349) (53 kW)
MAX DIG DEPTH 13' 4" (4.1 m)
MAX REACH 26' 6" (8.1 m)



HML32 MOBILE EXCAVATOR

OPTIONAL ATTACHMENTS/ACCESSORIES

TIRES

500/45-20 (wide-base tires)
 365/70 R 18 MPT total width = 90.16" (2290 mm)
 Alternative tires on request

OPTIONAL BOOMS

Monobloc boom / dipperstick	6' 6"	(2 m)
Monobloc boom, dipperstick	6' 6"	(2 m)
Offset boom	2' 9"	(850 mm)
Two-piece articulated boom, dipperstick	6' 6"	(2 m)
Circular boom, dipperstick	5' 5"	(1.65 m)

OUTRIGGERS

Outrigger pads, flat or rubber-lined		
Rear support blade, wide	7' 6" or 8' 1"	(2.3 m or 2.5 m)
Front dozer blade, wide	8' 1"	(2.5 m)

OPERATOR'S STAND

Air-cushioned driver's seat with longitudinal-horizontal suspension, seat and seat-back heating
 Independent diesel heating with timer
 Air conditioning

BUCKETS (QUICK-ATTACH SYSTEM)

Bucket, tapered	11.4" / 3.35 ft ³	(290 mm / 95 L)
Bucket, with ejector	11.4" / 2.30 ft ³	(290 mm / 65 L)
Bucket, tapered	13.8" / 4.06 ft ³	(350 mm / 115 L)
Bucket, with ejector	13.8" / 3.00 ft ³	(350 mm / 85 L)
Bucket, tapered	17.7" / 5.65 ft ³	(450 mm / 160 L)
Bucket, with ejector	17.7" / 4.06 ft ³	(450 mm / 115 L)
Bucket	23.6" / 8.48 ft ³	(600 mm / 240 L)
Bucket	31" / 11.83 ft ³	(800 mm / 335 L*)
Bucket	35" / 13.60 ft ³	(900 mm / 385 L*)
Cable-laying bucket	8.66"	(220 mm)
Ditch-cleaning bucket	59" / 9.53 ft ³	(1,500 mm / 270 L)
Swing bucket, 2 x 40°	59" / 12.18 ft ³	(1,500 mm / 345 L*)

CLAMSHELL GRABS

GM 2325	12.8" / 4.77 ft ³	(325 mm / 135 L)
GM 2400	15.8" / 6.00 ft ³	(400 mm / 170 L)
GM 2500	19.7" / 7.77 ft ³	(500 mm / 220 L*)
GM 2600	23.6" / 9.18 ft ³	(600 mm / 260 L*)
Grab transport lock (piped)		

ATTACHMENTS

Fork carrier, wide	4' 1"	(1.2 m)
Forks, long	3' 8"	(1.1 m)
Load hook attachable to bucket rod		
Ripper tooth		
Crane hook		

HYDRAULIC HAMMER

Type SH 140, sound-insulated.
 Tools: Moil point and chisel

TRANSVERSE CUTTING UNIT

Type WS 30, 30 kW, operating weight	827 lbs	(375 kg)
-------------------------------------	---------	----------

FURTHER OPTIONS

Steering change-over system for blade operation
 Bucket control change-over when fork carrier is mounted
 Open return for hydraulic hammer operation
 Quick-change adapter for hydraulic hammer operation
 Hose-rupture safety valves for intermediate boom / dipperstick
 Filling with biodegradable hydraulic oil, ester-based, VI 68
 Electrical tank refilling pump
 Anti-theft device (immobilizer)
 Set of lighting for cab (working floodlights front & rear)
 Additional tool box
 Boom height limitation

* Not permitted for every type of boom. Please inquire.

Further accessories and attachments on request.



- COMPACT EXCAVATORS
- WHEEL LOADERS
- TRACTOR LOADER BACKHOES
- SOIL COMPACTORS
- RIGID HAUL TRUCKS
- ARTICULATED HAUL TRUCKS
- SCRAPERS
- TELEHANDLERS



Terex reserves the right to change specifications without notice. Illustrations shown and described may include optional equipment, accessories or product specifications which may vary from country to country, see your local agent for details.

Terex

8800 Rostin Road
 Southaven MS 38671
 662.393.1800 phone 662.393.1700 fax
 sales@terexca.com

www.terex.com

TX04.HML32.01.XX02.05.PRAD