



<b>OPERATING WEIGHT</b>	24,230 lbs (10,990 kg)
<b>NET ENGINE POWER</b>	91 hp (SAE J 1349) (67 kW)
<b>MAX DIG DEPTH</b>	14' 2" (4.3 m)
<b>MAX REACH</b>	27' 4" (8.3 m)



# HML42 MOBILE EXCAVATOR



**Infinitely variable speed Hydrostatic Drive**

**Working hydraulic system independent of travel system**

**Standard auxiliary hydraulic circuits**

**Standard Quick-attach**

**Large cabin design for "full size" operators**

**Monoblock boom cylinder mounted on top for maximum protection**

**Excellent maintenance access**

## ENGINE

Manufacturer	Deutz	
Type	4-cylinder, turbocharged diesel engine	
Combustion	4-stroke, direct injection	
Displacement	247 in <sup>3</sup>	4.0 L
Net power rating at 2,000 rpm (SAE J 1349)	91 hp	67 kW
Cooling system	water	

## ELECTRICAL SYSTEM

Operating voltage	12 V	
Battery	12 V /135 Ah /600 A	

## POWER TRANSMISSION

Closed circuit, independent of working hydraulics.  
 Hydrostatic drive with automatic adjustment of drawbar pull and speed.  
 All-wheel drive from reduction gear on rear axle via cardan shaft to front axle.  
 Infinitely variable speed control forward and reverse in 2 speed ranges:

Working speed	0 – 3.7 mph	(0 – 6 kmh)
Travel speed	0 – 12.4 mph	(0 – 20 kmh)

## AXLES

Front axle: oscillating planetary drive axle.  
 Rear axle: rigid planetary drive axle.  
 Oscillating angle 13°

## TIRES

9.00-20, 14 PR twin tires	standard
600/40-22.5 extra wide-base tires	option

## BRAKES

Service brake: hydraulic dual-circuit pump accumulator brake, acting on oil-immersed multi-disc brakes of front and rear axles.  
 Excavator brake: acting on front and rear axles through lockable service brake.  
 Auxiliary brake: Hydrostatic drive provides dynamic braking.  
 Parking brake: Hydraulic spring-loaded brake, electrically controlled.

## STEERING

Fully hydraulically controlled front axle with integrated steering cylinder.  
 Max. steering angle 30°

## SWING SYSTEM

Hydrostatic drive with 2-stage planetary gear and axial piston fixed displacement motor, also acting as wear-resistant brake. Additionally, an automatically controlled spring-loaded multi-disc brake acting as parking brake when the pilot-controlled lever is in neutral position.  
 Swing speed 0 – 10 rpm

## HYDRAULIC SYSTEM

Axial piston pump with load-sensing, coupled with a load-independent flow division (LUDV). Simultaneous, independent control of all actions.  
 Sensitive maneuvers irrespective of loads.

Max. pump capacity	52.9 gpm	280 bar
Max. pressure	4,060 psi	(200 Lpm)

Triple gear pump for all positioning functions and swing movements.  
 Pressure cut-off valve for sensitive and energy-saving swing movements.

Pump capacities	10.3 + 6.9 + 2.9 gpm	(39 + 26 + 11 Lpm)
Control circuit for work attachments:		
Max. operating pressure	4,060 psi	(280 bar)
Pump capacity, adjustable	5.3 – 34.3 gpm	(20 – 130 Lpm)

## OPERATING DATA (WITH STANDARD ATTACHMENTS)

Operating weight (SAE J 732)	24,228 lbs	(10,990 kg)
Overall length in travel position, "TPA"	17' 9"	(5.4 m)
Overall length in travel position, monobloc boom	20' 3"	(6.2 m)
Overall length in transport position, "TPA"	21' 5"	(6.5 m)
Overall length in transport position, monobloc boom	23' 4"	(7.1 m)
Overall height in travel position	13' 1"	(4.0 m)
Total width (twin tires)	8' 2"	(2.5 m)
Total height over cab	9' 10"	(3.0 m)
Tread width	6' 5"	(1.9 m)
Wheel base	8' 6"	(2.6 m)
Ground clearance below cardan shaft	17"	(440 mm)
Turning radius	23' 6"	(7.2 m)
Uppercarriage tail swing	5' 3"	(1.6 m)
Uppercarriage front swing	9' 10"	(3.0 m)
Slew circle 180°	15' 1"	(4.6 m)
Slew circle 360°	19' 8"	(6.0 m)
Breakout force (SAE J 1179)	16,200 lbf	(72,061 N)
Ripping force (SAE J 1179)	13,163 lbf	(58,551 N)

## KNICKMATIK®

Lateral parallel adjustment at total digging depth.  
 Angle of articulation /Lateral adjustment to the left 54°/30" (54°/760 mm)  
 Angle of articulation /Lateral adjustment to the right 54°/3' 5" (54°/1 m)

## CAB

Sound-insulated full-vision steel cab. Right-hand sliding window, safety glass windows, skylight. Front window, supported by pneumatic springs, slideable under cab roof. Cab heating with windshield defroster through hot water heat exchanger with 3-setting fan. Choice fresh air / recirculating air, fresh air filter.  
 Hydraulically cushioned comfort seat with armrests and longitudinal, height and tilt adjustments. Operator control levers adjustable in longitudinal position. Telescopic and tilt-adjustable steering column. Instrument panel with safety module. Working floodlights Halogen E-3.  
 Noise emission ambient L<sub>WA</sub> 99 dB (A)  
 Noise emission cab L<sub>PA</sub> 71 dB (A)  
 Measured in dynamic measuring cycle according to 2,000/14/EC.

## FLUID CAPACITIES

Diesel tank capacity	63 gal	(240 L)
Hydraulic system (including tank)	50 gal	(190 L)

## OPTIONAL ATTACHMENTS/ACCESSORIES

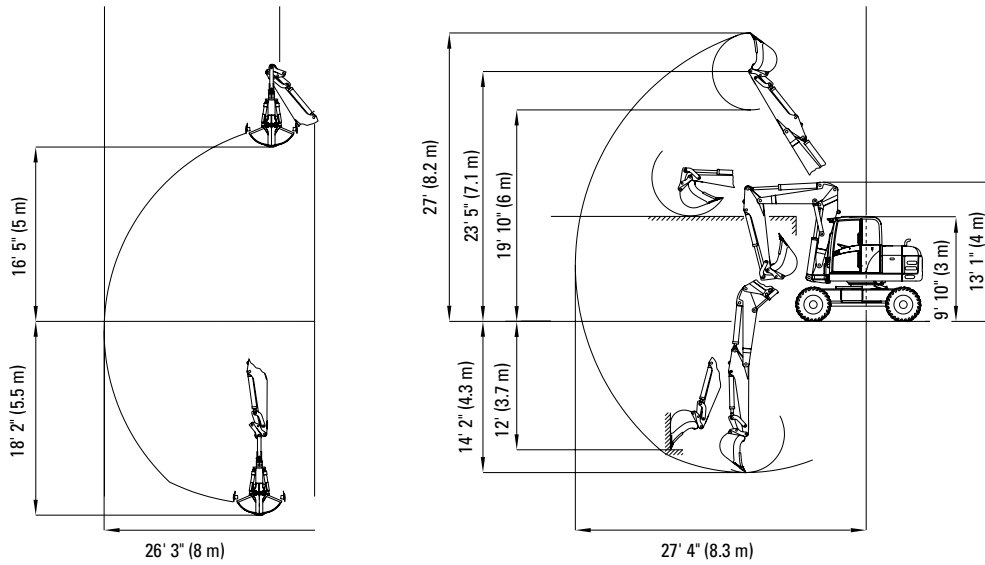
### BUCKETS (QUICK-ATTACH SYSTEM)

Bucket, tapered	13.8"/4.6 ft <sup>3</sup>	(350 mm /130 L)
Bucket, tapered	17.7"/6.2 ft <sup>3</sup>	(450 mm /175 L)
Bucket, with ejector	13.8"/5.1 ft <sup>3</sup>	(350 mm /145 L)
Bucket, with ejector	17.7"/7.1 ft <sup>3</sup>	(450 mm /200 L)
Bucket	23.6"/8.8 ft <sup>3</sup>	(600 mm /250 L)
Bucket	30"/11.7 ft <sup>3</sup>	(750 mm /330 L)
Bucket	35"/14.5 ft <sup>3</sup>	(900 mm /410 L*)
Ditch-cleaning bucket	59"/10.6 ft <sup>3</sup>	(1,500 mm /300 L)
Swing bucket, 2 x 40°	59"/12.2 ft <sup>3</sup>	(1,500 mm /345 L)

### CLAMSHELL GRABS

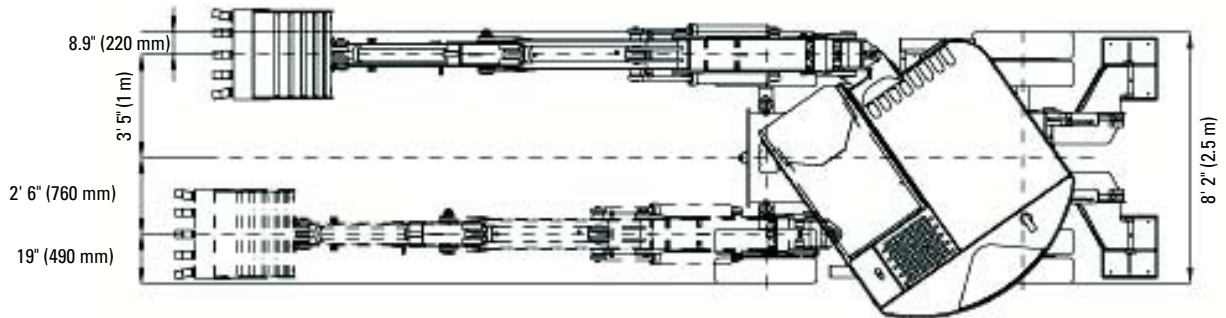
GS 3325	12.8"/5.3 ft <sup>3</sup>	(325 mm /150 L)
GS 3400	15.7"/7.1 ft <sup>3</sup>	(400 mm /200 L)
GS 3500	19.7"/8.8 ft <sup>3</sup>	(500 mm /250 L)
GS 3600	23.6"/11.5 ft <sup>3</sup>	(600 mm /325 L*)

**HML42 TWO PIECE ARTICULATED BOOM (ALL DIMENSIONS REFER TO 9.00-20 TIRES)**



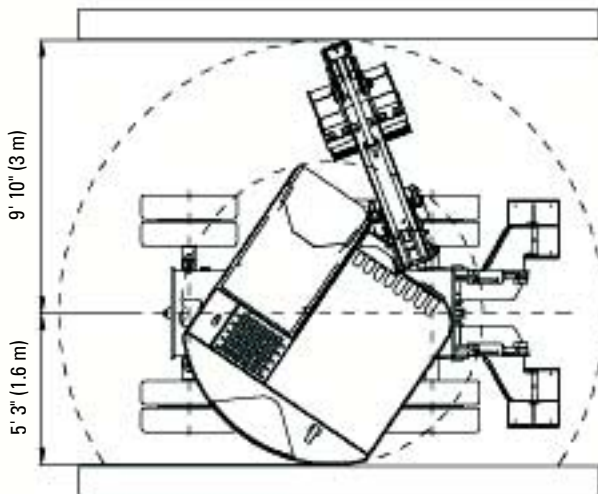
Work Equipment: Two piece articulated boom with dipperstick 6' 6" (2 m)

**HML42 EXCAVATION WITHIN THE ENTIRE MACHINE WIDTH (NO REPOSITIONING OF MACHINE)**

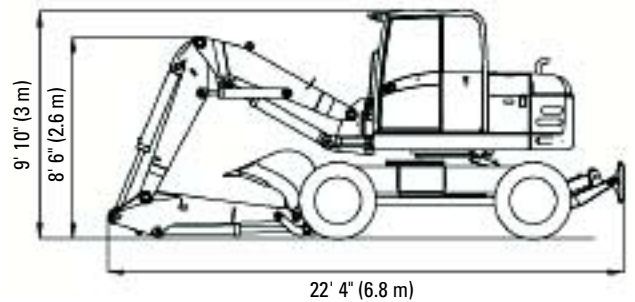


Lateral adjustment Left: 2' 6" (760 mm) Right: 3' 5" (1 m)

**HML42 SLEW CIRCLE-TOP VIEW**



**HML42 TRANSPORT POSITION**





**OPERATING WEIGHT** 24,230 lbs (10,990 kg)  
**NET ENGINE POWER** 91 hp (SAE J 1349) (67 kW)  
**MAX DIG DEPTH** 14' 2" (4.3 m)  
**MAX REACH** 27' 4" (8.3 m)



# HML42 MOBILE EXCAVATOR

## OPTIONAL ATTACHMENTS/ACCESSORIES continued

### HYDRAULIC HAMMER

Type SH 140, sound-insulated  
 Tools: Moil point and chisel

Quick-change adapter for hammer operation  
 Hose-rupture safety valves for intermediate boom and dipperstick  
 Filling with biodegradable hydraulic oil, ester-based, VI 68  
 Anti-theft device (immobilizer)

### FURTHER OPTIONS

Rear support blade, wide	8' 1"	(2.5 m)
Flat pads or rubber pads		
Additional control circuit for hydraulic hammer		
Hydraulic quick-attach system		
Fork carrier, wide	4' 1"	(1.2 m)
Forks, long	3' 8"	(1.1 m)

\*Not permitted for every type of boom. Please inquire.  
 Further accessories and attachments on request.

### LIFT CAPACITIES

ENGLISH Measurements Unit: 1,000 lbs		Load radius from the center of the ring gear											
Bucket hinge height		9' 10"		13' 11"		16' 4"		19' 8"		22' 11"		23' 3"	
		End	Side	End	Side	End	Side	End	Side	End	Side	End	Side
9' 10"	Supported	-	-	6.9	5.8	5.4	4.2	5.3	2.9	4.4	2.0	-	-
	Traveling	-	-	5.6	5.3	3.9	3.8	2.8	2.6	2.0	1.8	-	-
4' 11"	Supported	10.8	8.5	6.9	5.5	6.0	3.9	6.0	2.8	4.3	2.0	4.2	1.8
	Traveling	8.6	7.8	5.5	5.1	3.9	3.6	2.6	2.5	1.8	1.7	1.8	1.6
0	Supported	14.3	7.9	8.6	5.2	6.6	3.7	5.7	2.7	3.9	1.9	3.9	1.9
	Traveling	8.0	7.3	5.2	4.9	3.6	3.4	2.6	2.5	1.9	1.7	1.8	1.7
-3' 3"	Supported	16.0	7.6	9.4	4.8	7.4	3.3	5.5	2.4	3.9	1.9	-	-
	Traveling	7.0	7.2	5.0	4.5	3.5	3.2	2.5	2.3	1.9	1.8	-	-

### LIFT CAPACITIES

METRIC Measurements Unit: Metric tons		Load radius from the center of the ring gear											
Bucket hinge height		3.0 m		4.0 m		5.0 m		6.0 m		7.0 m		7.1 m	
		End	Side	End	Side	End	Side	End	Side	End	Side	End	Side
3.0 m	Supported	-	-	3.11	2.63	2.44	1.91	2.39	1.31	1.98	0.92	-	-
	Traveling	-	-	2.56	2.40	1.76	1.71	1.28	1.18	0.92	0.83	-	-
1.5 m	Supported	4.91	3.87	3.11	2.51	2.72	1.79	2.71	1.25	1.94	0.89	1.89	0.83
	Traveling	3.88	3.54	2.51	2.30	1.77	1.62	1.20	1.13	0.83	0.78	0.80	0.74
0	Supported	6.50	3.60	3.88	2.36	3.00	1.68	2.57	1.22	1.79	0.88	1.79	0.85
	Traveling	3.65	3.31	2.35	2.21	1.65	1.54	1.18	1.12	0.84	0.79	0.82	0.76
-1.0 m	Supported	7.26	3.43	4.25	2.16	3.34	1.50	2.51	1.11	1.77	0.86	-	-
	Traveling	3.43	3.25	2.27	2.04	1.59	1.43	1.15	1.03	0.87	0.81	-	-



- COMPACT EXCAVATORS
- WHEEL LOADERS
- TRACTOR LOADER BACKHOES
- SOIL COMPACTORS
- RIGID HAUL TRUCKS
- ARTICULATED HAUL TRUCKS
- SCRAPERS
- TELEHANDLERS



Terex reserves the right to change specifications without notice. Illustrations shown and described may include optional equipment, accessories or product specifications which may vary from country to country, see your local agent for details.

**Terex**  
 8800 Rostin Road  
 Southaven MS 38671  
 662.393.1800 phone 662.393.1700 fax  
 sales@terexca.com  
**www.terex.com**

TX04.HML42.01.XX02.05.PRAD