

MIXERS



MQ WHITEMAN

Plaster/Mortar and concrete models
for the professional contractor.



www.discount-equipment.com

MQ Whiteman™ mixers have the features, quality, and engineering excellence preferred by contractors and the equipment rental industry. Our heavy-duty mixers are reliable, easy to maintain and available in a full range of sizes and engine configurations for most applications.

Choose from steel or EasyClean™ polyethylene drums. Whatever your selection, **MQ Whiteman** sets the standard for performance and value.

Models available in 7-, 9-, and 12-cubic foot capacities.



WM90P
(9 cubic ft., Poly drum)

- **High-strength cast iron paddle arms** with wiper blades for a clean, uniform mix.
- **Heavy-duty safety grate** with built-in bag cutter.
- **Durable paddle shaft of 1 3/4"** square hardened steel. Greasable, double-sealed bearings provide a long service life.
- **Drum lock** allows positive "mix" and "tow" positions for safety.
- **Removable tow bar** manufactured of schedule 80 steel and available with choice of 2" ball, pin-type coupler or loop coupler.*
- **Forklift pocket** facilitates placement in the yard and on the jobsite.*
- **Solid 1 5/8" solid axle with large B78x13" tires** for smooth towing.*

* Excludes WM45.



WM90S
(9 cubic ft., Steel drum)



WM45
(4.5 cubic ft., Steel drum)
Non-towable

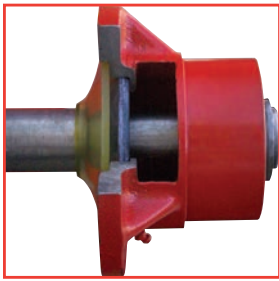
Unique wheelbarrow design ideal for small batch jobs and indoor work. Available with either electric or gasoline drive.



www.discount-equipment.com



Heavy-Duty Features



Innovative seal system.

Double-sealed bearings with greasable shaft seals. Specially designed seep hole protects bearings and warns when seal needs replacement.



Built to last. Heavy duty safety grid with auto-open safety bar. Wider dump chute for faster, easier pours.



Less vibration. Engine is mounted solid to base, minimizing vibration. The engine sits level — for accuracy when checking oil.



Double V-belt/gear drive. Allows larger, heavier mixes. Cast-steel pulleys increase durability. Idler wheel provides easy, positive engagement.



Convenient, easy operating engine engagement lever.

Thick tubular steel reinforced frame resists damage, provides superior strength and proper dumping clearance.

MUDTUB

The **Multiquip MUD TUB** is the easy choice for supplying mortar to professional masons. It is engineered for durability & easy cleanup with two available models to meet your job requirements.



- **Large capacity tub** – 10 cubic feet – can be used for transporting up to 1,000 pounds (454 kg) of mortar or other job site materials.
- **Easy Clean™** construction simplifies cleanup. Dry mortar releases from polyethylene the tub, without damage, by simply tapping with a mallet.
- **Durable polyethylene material** resists harsh treatment on the job site and extreme temperatures – heat and cold – while offering UV resistance.
- **Impact resistant**, 8-inch diameter, casters are available to simplify movement on smooth surfaces; a skid model is available with 4-inch rectangular steel bases for durability and is ideal for work on scaffolding.
- **Choose between two models** the (MUDTUBW) features 8" casters and a stationary model (MUDTUB) features a heavy-duty skid design.

Setting the standard for innovation and dependability!

Improve output and keep up with demands for higher production while mixing larger, heavier loads. The **WM120**-Series features hydraulic drive to power through the stiffest, low slump, mix designs. Contractors will appreciate the standard hydraulic dump which improves productivity while reducing fatigue. Equipment owners will appreciate the reduced maintenance costs the system provides by eliminating clutches and belt drives.



WM120PHD

12 cubic ft — hydraulic drive, hydraulic dump, EasyClean drum — available with steel drum

- **Rugged 14 gauge steel engine cover** with punched pressed ventilation openings for increased cooling and added strength.
- **EasyClean™ polyethylene drums simplify cleanup.** Steel drums also available.
- **High-strength cast-iron paddle arms** with wiper blades for a clean, uniform mix.
- **Heavy duty safety grate** with built-in bag cutter.
- **Durable paddle shaft** of 1 3/4" square hardened steel. Double-sealed bearings with eight spring loaded greaseable shaft seals.
- **Heavy-duty removable tow tongue** made of tough schedule 80 steel.
- **Solid 5/8" axle** with large B78x13" tires for smooth towing.
- **Controls Levers** provide the ability to control mix direction (forward/reverse) and raise/lower the dump mechanism.

**Discount
Equipment**

www.discount-equipment.com



Multiquip concrete mixers are available with either steel or polyethylene drums. Their durable construction and low maintenance requirements will provide you with years of reliable service.



Model MC94S (9 cubic ft.)

- **Wide drum opening** for easy loading of material.
- **Durable Steel drums** are available in 4, 6 and 9 cubic foot capacities.
- **Multi-position dump wheel** for safe material discharge.
- **Heavy-duty one-piece cast iron ring gear** for long life.
- **Heavy-duty retractable tow bar** made of schedule 80 steel available with loop coupler, 2" ball coupler or pin-type coupler.
- **Axle springs**, selected models, and large B78x13" tires for smooth towing to your job.**
- **Rugged 14-gauge steel engine covers** with punched ventilation openings for increased cooling and added strength.

* 4-cubic foot models available with steel drums only.

** Axle springs not available on 4-cubic foot models.

**Discount
Equipment**

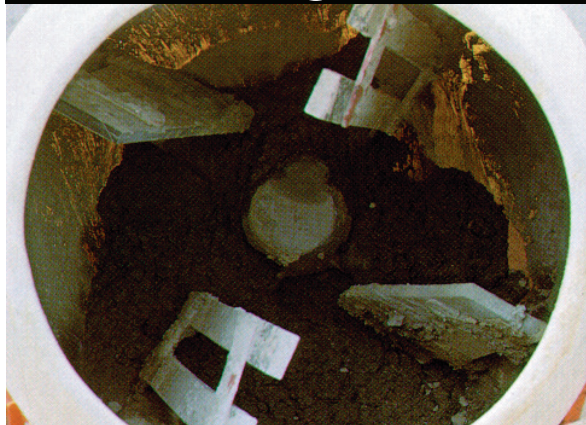
www.discount-equipment.com

**MQ
MULTIQUIP**

CONCRETE MIXERS

EasyClean™ makes all the difference...

BEFORE



In all standard steel drum mixers, this dried concrete could be a nightmare to clean out...

AFTER



...but not with an EasyClean mixer! A few taps with a rubber mallet and the dried concrete falls right out!

THE ULTIMATE CONCRETE MIXER!

The MC12PH concrete mixer handles your biggest and toughest applications. It features a 12 cubic ft. Easyclean™ drum and powerful Honda GX340 engine.



Model MC94P (9 cubic ft.)

Polyethylene drums available in 6 and 9 cubic foot models only.

THE EASYCLEAN™ ADVANTAGE

Our polyethylene drums put an end to clean up problems and save you time and money.

Removing dry material from a steel-drum mixer, may take several hours and result in dents or damage in the process.

A simple tap with a rubber mallet does the job — cleans out in minutes without dents, rust or cracks!



www.discount-equipment.com





The **Mix-N-Go Concrete Mixer** can mix up to three cubic feet of material, making it ideal for homeowners and small contractors.

Available with a polyethylene drum, the Mix-N-Go is ideal for small footings and bases, binding block and concrete patching. It is available with a gasoline engine or electric motor for operator convenience. It can also be used as a wheelbarrow to transport concrete, and other material around the job site.

- **Power**— $\frac{3}{4}$ HP, 115 single-phase UL- and CSA-approved electric motor.
- **Pneumatic tires**—for convenience on rough terrain.
- **Gearbox**—gears immersed in oil for long trouble-free life.
- **Mixer stand** allows drum to rotate 360 degrees, easily removed to use as wheelbarrow.

Specifications

Model	Drum Construction	Max. Mixing Capacity*	Engine	Height in. (mm)	Width in. (mm)	Length in. (mm)	Stand Weight lb. (kg)	Dry Weight lb. (kg)
MC3PEA	Polyethylene	3.0 cubic ft.	$\frac{3}{4}$ HP, 115V, 1 ϕ Electric Motor	34 (863.6)	23 - 5/8 (584.2)	48 - 1/2 (1219.2)	35 (15.9)	138 (62.6)



www.discount-equipment.com



Whiteman Mixers - Specifications

Plaster/Mortar Mixers — Poly-Drum Models

Model	WM70P	WM90P	WM120PHD (Hydraulic)
Capacity — cu.ft. (liters)	7 (93)	9 (248)	12 (340)
Capacity — bags	1½ to 2½	2½ to 3½	3½ to 4
Power Sources**	1.5 HP 1ø 115/230V Electric 4.8 HP Honda 7.9 HP Honda	3 HP 1ø 230V Electric 7.9 HP Honda	11.7 HP Honda
Drum Material	Polyethylene	Polyethylene	Polyethylene
Average weight* — lbs. (kg)	690 (313)	785 (356)	1,010 (454)
Length w/tongue x W x H — in. (cm)	98x50x56 (248x127x142)	98x50x59 (248x127x150)	82x51x60 (208x130x152)
Height including handle — in. (cm)	73 (185)	77 (196)	75 (191)
Discharge height — in. (cm)	21 (53)	21 (53)	17 (43)
Drive	V-Belt	V-Belt	Hydraulic
Dump Action	Manual	Manual	Hydraulic Dump

Plaster/Mortar Mixers — Steel-Drum Models

Model	WM45	WM63	WM70S	WM90S	WM120SHD (Hydraulic)
Capacity — cu.ft. (liters)	4.5 (113)	6.3 (178)	7 (93)	9 (248)	12 (340)
Capacity — bags	1/3 to 1	1½ to 2	1½ to 2½	2½ to 3½	3½ to 4
Power Sources**	1.0 HP 1ø 115/230V Electric 4.8 HP Honda	1.5 HP 1ø 115/230V Electric 4.8 HP Honda 7.9 HP Honda	1.5 HP 1ø 115/230V Electric 4.8 HP Honda 7.9 HP Honda	3 HP 1ø 230V Electric 7.9 HP Honda	11.7 HP Honda 5HP 1ø 230V Electric 5HP 3ø 230/460V Electric
Drum Material	Steel	Steel	Steel	Steel	Steel
Average weight* — lbs. (kg)	380 (172)	574 (260)	690 (313)	785 (356)	1,010 (454)
Length w/tongue x W x H — in. (cm)	67x28.5x41 (170x65x104)	92.5x51x54.6 (235x129.5x137)	98x50x56 (248x127x142)	98x50x59 (248x127x150)	82x51x60 (208x130x152)
Height including handle — in. (cm)	60 (152)	54.6 (1384)	73 (185)	77 (196)	75 (191)
Discharge height — in. (cm)	7.5 (19)	18 (46)	21 (53)	21 (53)	17 (43)
Drive	V Belt/Gear	V Belt/Gear	V-Belt	V-Belt	Hydraulic
Dump Action	Manual	Manual	Manual	Manual	Hydraulic Dump
Towable	No	Yes	Yes	Yes	Yes

Concrete Mixers — Steel- and Poly-Drum Models

Model	Steel Drum Models			Polyethylene Drum Models		
	MC44S	MC64S	MC94S	MC64P	MC94P	MC12PH
Capacity — cu.ft. (liters)	4 (110)	6 (165)	9 (248)	6 (165)	9 (248)	12 (339)
Capacity — bags	1/3	½	1	½	1	1.5 - 2
Power Sources**	0.5 HP 1ø 115V Elect. 3.5 HP Honda	1.5 HP 1ø 115/230V Elect. 4.8 HP Honda 7.9 HP Honda	1.5 HP 1ø 115/230V Elect. 7.9 HP Honda	1.5 HP 1ø 115/230V Elect. 4.8 HP Honda 7.9 HP Honda	1.5 HP 1ø 115/230V Elect. 7.9 HP Honda	10.7 HP Honda
Average weight* — lbs. (kg)	495 (225)	685 (311)	810 (367)	685 (311)	800 (363)	1000 (435.5)
Length w/tongue x W x H — in. (cm)	87x51x54 (221x130x137)	102X51X59 (259X130X150)	106x51x63 (269x130x160)	102X51X59 (259X130X150)	106x51x63 (269x130x160)	109x56x67.5 (276.8x142.2x171.4)
Discharge height — in. (cm)	23 (58)	23 (58)	23 (58)	23 (58)	23 (58)	23 (58)
Drum opening — in. (cm)	16 (40)	17 (43)	19.7 (50)	19 (48)	23.7 (60)	20 (50.8)
Drum depth — in. (cm)	26 (66)	29 (74)	31 (79)	29 (74)	31 (79)	35.5 (90.1)
Tires	B78x13	B78x13	B78x13	B78x13	B78x13	B78x13
Drive	V-Belt	V-Belt	V-Belt	V-Belt	V-Belt	V-Belt
Dump Action	Manual	Manual	Manual	Manual	Manual	Manual

* Mixer weight shown is an average; exact weight is dependent upon power source.

* Actual bag mix capacity based on a 94lb. bag of Portland cement. May vary depending on aggregate size and mix design.

** Engine power ratings are calculated by the individual engine manufacturer and the rating method may vary among engine manufacturers. Multiquip Inc. and its subsidiary companies makes no claim, representation or warranty as to the power rating of the engine on this equipment and disclaims any responsibility or liability of any kind whatsoever with respect to the accuracy of the engine power rating. Users are advised to consult the engine manufacturer's owners manual and its website for specific information regarding the engine power rating.

All mixers available with loop coupler, 2" ball coupler or pin-type coupler. Heavy duty safety chains are included.



www.discount-equipment.com

