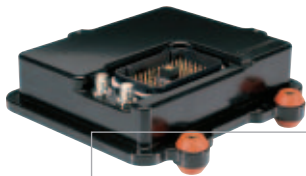




## GlobalTRACS®

### Equipment Management Solution

#### Revolutionizing the Construction Industry



Ruggedized to withstand the harshest working environments

Developed through a powerful combination of wireless technology, data-handling functions, and construction industry know-how, the GlobalTRACS equipment management solution automatically collects, organizes, and transmits vital information about where and how construction equipment is being used. The GlobalTRACS solution provides equipment distributors, rental companies, and contractors with an immediate competitive advantage. It offers an entirely new way to help cut costs, increase revenue, improve workforce productivity, maximize equipment utilization, and attain a higher level of customer satisfaction.

#### Benefits:

- ▶ Reduces costs
- ▶ Optimizes preventative maintenance program
- ▶ Maximizes equipment utilization
- ▶ Improves workforce productivity
- ▶ Increases revenue
- ▶ Enhances customer satisfaction
- ▶ Offers greater security for equipment
- ▶ Integrates equipment data with your business systems
- ▶ Provides flexibility to grow with your business

The GlobalTRACS solution provides up-to-the-minute engine hours data showing exactly when equipment is running and when it isn't. It also provides GPS-based location information to keep you informed about where equipment is located. To enhance security, the GlobalTRACS solution offers geo-fence monitoring alerts that inform you about equipment movement outside pre-set boundaries. Customer-defined reports enable you to view data in a format that best meets your needs, which makes information more useful in less time. Just as important, this solution is made available by QUALCOMM, a worldwide leader in wireless data technology that provides reliable message delivery of the information you need on time, every time.



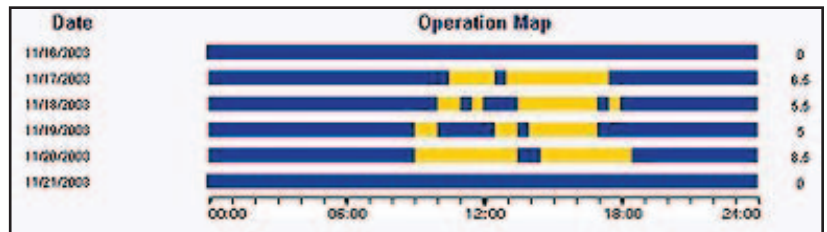
## The GlobalTRACS Solution Features:

- ▶ Detailed engine hours data
- ▶ Preventative maintenance scheduling
- ▶ GPS-based location data
- ▶ Geo-fence alerts for equipment movement
- ▶ User-defined management and maintenance reports
- ▶ Driver directions and instructions
- ▶ Easy back-office software integration
- ▶ Ruggedized construction
- ▶ Reliable message delivery

## Count the Ways to Lowered Costs and Increased Productivity

### Engine Hours Data

The GlobalTRACS solution supplies engine hours data on demand or at customer-defined intervals. Armed with this information, you can generate project costing estimates and billing records of unparalleled accuracy, while avoiding embarrassing mistakes and disagreements with customers. Furthermore, you can increase equipment utilization by re-deploying idle or underutilized equipment.



Equipment ID	Maintenance Status	Next Maintenance Due In	Location (cross street)	Operational Power State	Action
0010CONSUM	Overdue	On 86072004 at 724.0 hrs As of 86072004 08:22 AM	0.09 miles E of MIRA SORRENTO PL & SCRANTON RD (See Diag. On) As of 04072004 08:22 AM	Engine Off	(Action)
Test Unit 00_1	Due Soon	41.8 hrs As of 8112004 11:48 AM	001 Corso Street J	Engine On	(Action)
213			001 Corso Street J	Idling	(Action)
5222			001 Corso Street J	Engine On	(Action)
111			001 Corso Street J	Idling	(Action)

### Proactive Maintenance Scheduling

Accurate records of engine hours data enables you to optimize your service program and preventative maintenance schedules. This reduces downtime and related costs by preventing excess servicing on one hand, and inadequate or late servicing on the other. The GlobalTRACS solution enables you to finally build a low cost, world-class maintenance program without interrupting construction timetables or impeding your customers.

### Integration and Flexibility

The GlobalTRACS solution is flexible enough to grow with you, and can be installed in two ways. Some customers prefer the Internet-based option, which requires only Internet access and a browser. Others prefer full integration with existing back-office operations, billing, and maintenance software. Both options offer seamless operation, and a fully integrated option enables automatic updating of business systems with the collected data. QUALCOMM also offers the OmniTRACS® or OmniExpress® mobile communications solutions which can help you communicate with your delivery vehicles and service technicians to bring improved productivity and enhanced customer service.

## Driver Instructions

To ensure timely pickup and delivery of equipment for maintenance or use at another job-site, the GlobalTRACS solution provides maps and textual step-by-step instructions from point to point. Complete with zoom, e-mail, and print capabilities, the system makes pickup and drop-off easy and efficient.

## GPS-Based Location Data

Global positioning system (GPS) data keeps you informed about the location of equipment on demand or at predetermined intervals. This helps prevent service technicians and delivery personnel from wasting time searching for equipment on the job site. GPS data can also be used for preliminary notices and lien filings through legal documentation of equipment movement from site to site.

Get Driving Directions

Driving times vary based on distance of route. There could be significant wait time for long distances.

Refresh Map

Directions	City/State
1 Initiate on DEWEY RD heading NW for 0.2 Miles.	SAN DIEGO, CA
2 Right on ROSECRANS ST heading NE for 1.39 Miles.	SAN DIEGO, CA
3 Straight on I-8 heading E for 2.43 Miles.	SAN DIEGO, CA
4 Straight on CABRILLO FWY heading N for 4.92 Miles.	SAN DIEGO, CA
5 Slight Left on KEARNY VILLARD heading NE for 0.68 Miles.	SAN DIEGO, CA
6 Conclude on KEARNY VILLARD	SAN DIEGO, CA
<b>Total Miles: 9.62</b>	

Equipment Summary Report Results

Make: All  
Model: All  
Type: All  
Status: All  
OT: All  
Equipment ID: All  
Equipment ID: All  
Equipment ID: All  
Equipment ID: All

REPORT ON EQUIPMENT

Equipment ID	Make/Model	Year	Location	Status	Engine Hours	Engine Type	Location (near city)
12345678901234567890	John Deere	2011	San Diego, CA	Active	12345	Diesel	San Diego, CA
98765432109876543210	Caterpillar	2010	San Diego, CA	Active	5678	Diesel	San Diego, CA
23456789012345678901	Case	2009	San Diego, CA	Active	9012	Diesel	San Diego, CA
34567890123456789012	New Holland	2008	San Diego, CA	Active	3456	Diesel	San Diego, CA
45678901234567890123	Case IH	2007	San Diego, CA	Active	7890	Diesel	San Diego, CA

## User-Defined Reports

At the heart of the GlobalTRACS solution is knowledge. Not just raw, unprocessed data, but clearly presented information that can be put to work immediately. For example, in addition to issuing a unique identifier for each piece of equipment and recording the year, make, and model, the GlobalTRACS solution monitors engine hours, geographic position, on/off status, maintenance due, and other vital indicators. Each business has its own set of priorities, and this solution enables you to format reports to display only the data that is important to you—making it easy to take quick action.

## Geo-fence Based Security

Based on updated GPS data, the GlobalTRACS solution automatically issues alerts when equipment moves outside established boundaries—or geo-fences—of pre-defined areas. Geo-fences can be created for individual pieces or entire groups of equipment, which reduces the risk of loss due to theft or unauthorized use.

Refresh Map

Map display will show the geofence parameters as shown in the 'Vals' table below. Pending changes will not be shown on the map.

Geofence Parameter	Value
Geofence State	Active(outside)
Select a Geofence	Warning & Hwy 8 <input type="button" value="Edit Geofence"/>
Position (near city)	3.75 miles WNW of San Diego
Position Date	12/04/2013 11:33:15 PM
Geofence Center	32.7683, -117.089
East /West Length	1 Miles
North /South Length	5 Miles
Start date	<input type="text"/> <input type="button" value="GO"/> 12 am
End date	<input type="text"/> <input type="button" value="GO"/> 12 am <input type="button" value="Onoff"/>

## Specifications

### Physical Characteristics

Dimensions	8"l x 7.7"w x 2.2"h
Weight	3 lb
Discrete inputs/outputs	Run terminal Vehicle battery voltage sense 4 user-defined sensor inputs CAN Bus (J1939) or J1708 Diagnostic port

### Enclosure

Rugged, sealed cast aluminum	
Operating voltage	9-32 VDC

### Environmental Specifications

Shock	40g, 11 msec per axis
Operating vibration	5.0g RMS, 24-2000 Hz, 3 axes
Non-operating vibration	8.0g RMS, 24-2000 Hz, 3 axes
Sealed enclosure	5 psi
Operating temperature	-30°C to +85°C -22°F to +185°F
Storage temperature	-50°C to +85°C -58°F to +185°F

### Sealed antenna

#### (GPS, 800/1900 MHz CDMA, 800 MHz AMPS)

Dimensions	4"h x 4.2"d	
Power Management	12 VDC	24 VDC
Engine On	277mA	150mA
Engine Off	<1mA	<2mA

## Ruggedized Construction

The ruggedized mobile terminals of the GlobalTRACS solution are designed to meet equipment manufacturer specifications, and mount directly on your construction equipment where they can withstand the harshest working environments and provide unsurpassed reliability.

## Reliable Message Delivery

Step back and count the elements that contribute to the message speed, quick communications, and dependability of the GlobalTRACS solution. GPS accuracy. Ruggedized hardware. Back-office software compatibility. Easy integration. Meanwhile, the legendary QUALCOMM Network Operations Centers (NOCs) work behind the scenes handling more than 9 million transactions per day. Featuring full redundancy and staffing by trained professionals, the NOC monitors the data network 24 hours a day/365 days a year. It all adds up to the one thing customers count on most: QUALCOMM's reliable message-delivery.

## The Confidence of QUALCOMM

The construction equipment industry is not the first to be revolutionized with a complete solution based on QUALCOMM's digital wireless technology. As one of the world's largest mobile data providers, QUALCOMM also offers products and services for the transportation and logistics industry with more than 500,000 mobile units shipped worldwide. Technology is advancing and changing quickly, and QUALCOMM has the expertise and resources to assure you that your investment in technology is secure while offering unparalleled reliability.

For more information, visit [www.qualcomm.com/qwbs](http://www.qualcomm.com/qwbs) or call us at **1-800-348-7227**.

 WIRELESS SOLUTIONS BY QUALCOMM

**QUALCOMM**<sup>®</sup>

© 2004 QUALCOMM Incorporated. All rights reserved.

QUALCOMM, Wireless Business Solutions, GlobalTRACS, OmniTRACS, and OmniExpress are registered trademarks of QUALCOMM Incorporated.

Specifications subject to change without notice. QUALCOMM endeavors to ensure that the information in this document is correct and fairly stated, but QUALCOMM is not liable for any errors or omissions.

Published information may not be up to date and it is important to confirm current status with QUALCOMM.

LCL0256 11/04