

# TELEHANDLER

## MODELS

742, 944 and 1155



# Mustang Telehandlers — Putting Power, Flexibility and Precision to Work

Mustang introduces a new era in construction machine engineering excellence — the Mustang Telehandler, an all-purpose telescopic toolhandling machine that will become an indispensable part of a productive day on the job. Mustang Telehandlers adapt to a wide range of job site demands, consolidating jobs once done by many machines, greatly reducing your overhead.

Industry-leading lift capacities put the Mustang Telehandler in a class of its own. With lift heights ranging from 42 to 55 feet and maximum lift capacities of 7,000, 9,000 and 11,000 pounds, the Mustang family of three Telehandler models provides an industry-unique array of application options.

Mustang Telehandlers combine tough, solid structure with precise toolhandling and maneuvering abilities. An adjustable boom speed control system, three steering modes, a tight-turning radius — and the revolutionary Work Platform Safety (WPS) System — all combine to expand Mustang Telehandler job duties in the field, strengthening your bottom line.

**The proven performance of the 115 hp engine gives you amazing power and control.**



Getting into tight corners — and getting out — while moving loads through tough, muddy conditions on the job site is easy with a Mustang Telehandler. With a 146-inch outside turning radius, 20 degrees of frame tilt and three different steering modes, this large, heavy-duty machine becomes a nimble traveler. And with maximum forward reach of up to 40 feet, Mustang's Telehandler can overcome challenging obstacles and uncooperative terrain with ease.

# Low-Profile and High-Profile Options

The Mustang Telehandler — the 742, 944 and 1155 are available in both low-profile and high-profile boom configurations. The low-profile boom offers 360 degrees of visibility around the machine while the high-profile boom — with its wide-open view of the right rear frame area — provides excellent movement into tight areas.



A tilt-away oil cooler assembly and an easy-to-clean radiator allow for quicker routine engine maintenance.



The rear axle stabilizer cylinder provides a stable foundation for the outstanding lift capacities.



Standard on all Telehandler models, the powerful 115 hp turbocharged engine is side-mounted for easy access.



Optional outriggers provide enhanced stability, increasing the productivity of the Mustang Telehandler.



Operators can keep tools, articles of clothing and work accessories tucked safely away in a lockable storage compartment.



The speed of the auxiliary and tilt functions can be adjusted manually using the control valves found in the rear compartment.



Front canopy and boom work lights — an optional feature — offers excellent illumination of the work area.

# Unmatched Versatility on the Job Site

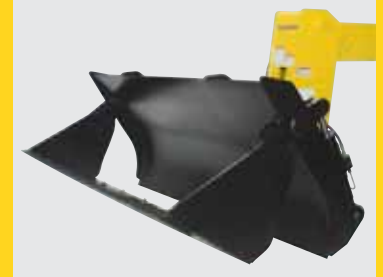
The huge range of Mustang attachment tools available for the Telehandler provides operators with the ability to do just about any job quickly and efficiently.



The Mustang Truss Boom gives operators the ability to position trusses with the utmost precision — up to four stories.



Mustang's Telehandler product design provides the necessary weight, strength and stability characteristics required to support a true tele-loader application. Telehandler models 742 and 944, with their superior loader capabilities, add yet another element to the versatility of the Telehandler. Operators will achieve dump heights and load capacities no wheel loader can handle!



Perform multiple tasks, such as loading, grabbing and digging with a durable Mustang Four-in-One bucket.



Attach a Mustang Auger to your Telehandler for fast hole drilling.



Handle awkward materials with ease using Mustang's Industrial Grapple Bucket.



With Mustang Telehandler's **circuit selector valve**, only one set of auxiliary hydraulic hoses is required to operate both the hydraulic Quickattach II system and the hydraulically powered attachments.



**Mustang attachment tool mounting system** limits the time it takes to switch tools on the job. For durable digging, the Quickattach II system supports up to 12,500 pounds of breakout force — the best in the industry!

**Mustang Telehandler's rotating carriage** allows the operator to match the angle of the landing surface, leading to smooth, uninterrupted placement of objects.



**Mustang's Sweeper attachment**, equipped with a hydraulic side-swing feature, keeps work surfaces clear of debris.

# Reaching New Heights on the Job — The New Work Platform Safety (WPS) System

Introducing a whole new level in job site versatility — safely lifting personnel to elevated work areas with Mustang's new WPS System. From the cab, the operator engages the WPS System, which activates settings and systems on the machine for safe handling of personnel. Forward and rearward movement is neutralized, the park brake is applied, the rear axle stabilizer cylinder is locked, the frame-leveling speed is greatly reduced, auxiliary and fork tilt functions are deactivated, and the frame level is monitored side-to-side and fore-and-aft (any readings beyond default parameters disable boom functions). By utilizing this approved platform, work personnel can be safely raised and lowered to and from elevated areas.



From their work platform, personnel can disable boom functions with access to the **remote shutdown switch**.



The **WPS System** is activated from the operator's station of the Mustang Telehandler.



Add one more duty to your Mustang Telehandler and **save time and money** on unnecessary scaffolding or man-lift rentals. Mustang puts people on top!

# Better Work Environment

Mustang Telehandlers feature unmatched cab options and an ergonomically inspired design that keeps operators' attention on the job. Operators enjoy the largest cabin compartment in the industry — 57 cubic feet of interior space. Optimum visibility characteristics provide for a 360-degree visual of the job site. When the boom is up with raised loads — for example, when loading high-sided trucks — roof and right-side glass give good visibility for safer handling.



## Enclosed Cab —

Optional enclosed cabin helps keep out debris, dirt and foul weather. Exclusive to the industry, the Mustang cab includes a heater and optional air conditioning. Ventilation is made easier with a split door.

## Ergonomic Design —

An unobstructed view of all gauges and controls in the Telehandler cab keeps operators aware of the machine's functions at all times. Controls are easy to reach and comfortable to operate.

## The Next Generation Joystick —

Mustang channels all the dynamics of boom and attachment function into a single, pilot-operated joystick. The four top buttons are thumb activated. The two blue control buttons operate auxiliary functions, determined by the attachment tool in use. The two yellow buttons operate the attachment tool tilt functions. By pressing the red trigger located on the front of the handle, function speeds increase to full capacity.



**Controls are easy to reach** and easy to operate.

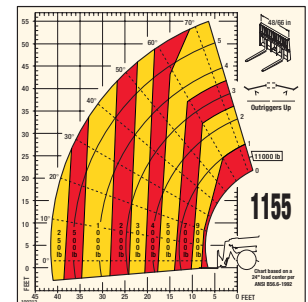
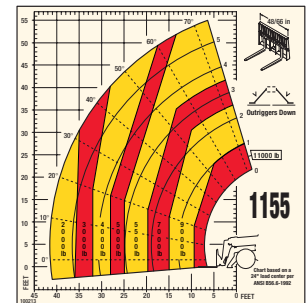
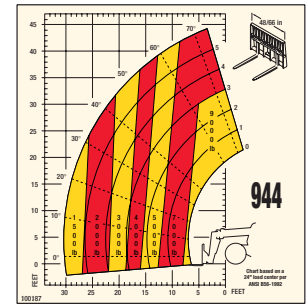
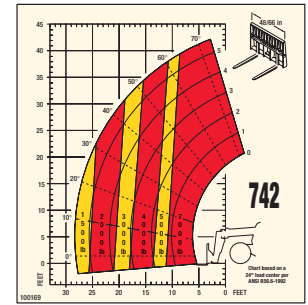
**Change gears** with ease and comfort using the directional/speed control.

**Quickly switch** from four-wheel steer to two-wheel steer or to crab steering (a great way to place loads close to a barrier).



**The tilt steering wheel** is just one of the many features that proves Mustang takes operator comfort seriously.

|   | <b>Mustang<br/>742</b> | <b>Mustang<br/>944</b> | <b>Mustang<br/>1155</b> |
|---|------------------------|------------------------|-------------------------|
| <b>Capacities</b>                           |                        |                        |                         |
| <b>Lift:</b>                                |                        |                        |                         |
| Lift Capacity (kg)                          | 7,000 lbs. (3175)      | 9,000 lbs. (4082)      | 11,000 lbs. (4989)      |
| Lift Height (m)                             | 42' 3" (12.8)          | 44' 3" (13.4)          | 55' 1" (16.7)           |
| Lift Capacity at<br>Max. Lift Height (kg)   | 7,000 lbs.<br>(3175)   | 7,000 lbs.<br>(3175)   | 5,500 lbs.<br>(2495)    |
| Max. Forward Reach (m)                      | 28' 5" (8.6)           | 30' 6" (9.2)           | 40' 9" (12.4)           |
| Lift Capacity at<br>Max. Forward Reach (kg) | 2,000 lbs.<br>(907)    | 1,500 lbs.<br>(680)    | 2,000 lbs.<br>(907)     |
| Max. Reach<br>Below Ground (mm)             | 23"<br>(584)           | 23"<br>(584)           | 23"<br>(584)            |
| <b>Loader:</b>                              |                        |                        |                         |
| Breakout Force (kN)                         | 11,000 lbs. (48.9)     | 12,500 lbs. (55.6)     | N/A                     |
| Max. Dump Height (m)                        | 40' 3" (12.2)          | 42' 5" (12.9)          | N/A                     |
| Reach at<br>Max. Dump Height (mm)           | 26"<br>(660)           | 33"<br>(838)           | N/A                     |
| Dump Angle at<br>45° Dump Angle             | 23°                    | 23°                    | N/A                     |
| Max. Loadover Height (m)                    | 42' 2" (12.8)          | 43' 11" (13.3)         | N/A                     |
| Dump Height at<br>45° Dump Angle (m)        | 32' 4"<br>(9.8)        | 34'<br>(10.3)          | N/A                     |
| Rollback at<br>Ground Level                 | 30°                    | 30°                    | N/A                     |
| Total Bucket Rotation                       | 132°                   | 132°                   | 132°                    |
| Parallel Lift                               | Standard               | Standard               | Standard                |
| Engine<br>Horsepower (kw)                   | 115 hp<br>(85.7)       | 115 hp<br>(85.7)       | 115 hp<br>(85.7)        |
| <b>Specifications:</b>                      |                        |                        |                         |
| Total Weight (kg)                           | 23,100 lbs. (10478)    | 24,650 lbs. (11181)    | 28,460 lbs. (11095)     |
| Overall Length (m)                          | 241" (6.1)             | 250" (6.3)             | 254" (6.4)              |
| Overall Width (m)                           | 99" (2.5)              | 99" (2.5)              | 99" (2.5)               |
| Overall Height (m)                          | 94" (2.4)              | 94" (2.4)              | 95" (2.41)              |
| Overall<br>Ground Clearance (mm)            | 16"<br>(406)           | 16"<br>(406)           | 16"<br>(406)            |
| Overall<br>Wheel Base (m)                   | 128"<br>(3.2)          | 128"<br>(3.2)          | 128"<br>(3.2)           |
| Min. Turning Radius (m)                     | 146" (3.7)             | 146" (3.7)             | 146" (3.7)              |
| Total Frame-Leveling<br>Capacity            | ±10°                   | ±10°                   | ±10°                    |
| Number of<br>Forward Speeds                 | 4                      | 4                      | 4                       |



1880 Austin Road  
 Owatonna, MN 55060  
 507-451-7112  
 Fax: 507-451-8209  
 www.mustangmfg.com

© 2004 Mustang Manufacturing Company, Inc.

All Rights Reserved.

**SAFETY IS NO ACCIDENT.** Mustang Manufacturing Company reminds you that before operating any piece of equipment, be sure to read and understand the operators manual. U.S OSHA regulations require that forklift operators be trained and certified. Additionally, be sure all safety devices and shields are securely in place and functioning properly. Mustang Manufacturing Company reserves the right to make changes in specifications and add improvements at any time without notice or obligation.