



# **SERVICE/PARTS MANUAL**

## **MODELS: RP850G and RP850D**



### **REVERSIBLE PLATE**

A 100% employee-owned American manufacturer



# TABLE of CONTENTS

RP850G / RP850D

<b>FOREWORD</b> .....	<b>5</b>
<b>TECHNICAL DATA</b> .....	<b>7 - 10</b>
Machine Specifications.....	8 - 9
Noise and Vibration Data.....	10
<b>HEALTH &amp; SAFETY</b> .....	<b>11 - 17</b>
Safety Use .....	12
Safety Precautions .....	13 - 17
<b>MAINTENANCE</b> .....	<b>19 - 27</b>
General Notes .....	20
Maintenance Schedule .....	21
Lubrication Schedule .....	22
Alternative Lube Oil Table .....	22
Maintenance Work (Honda Engine) .....	23
Filling up with fuel .....	23
Checking the engine oil level .....	23
Cleaning the air filter element .....	23 - 24
Maintenance Work (Hatz Engine) .....	24
Checking the engine oil level .....	24
Checking cooling air-/combustion air-intake .....	24
Cleaning the dry air filter .....	25
Torque Information .....	26
Screw Connections .....	26
Checking Rubber Buffer .....	26
Checking V-Belt .....	26 - 27
Exciter: Oil Level / Oil Change .....	27
Filling and Bleeding the Circuit .....	27

# TABLE of CONTENTS

RP850G / RP850D

<b>EXPLODED VIEWS WITH PARTS .....</b>	<b>29 - 45</b>
Hardware Key .....	31
Lower Plate .....	32 - 33
Eccentric Assembly .....	34 - 35
Upper Deck Assembly - Honda .....	36 - 37
Clutch Assembly .....	38 - 39
Tow-Bar Grip .....	40 - 41
Directional Control Arm .....	42 - 43
Decal Identification .....	44 - 45
<b>CALIFORNIA PROPOSITION 65 WARNING .....</b>	<b>47</b>

# FOREWORD

These instructions include:

- Safety regulations
- Operating instructions
- Maintenance instructions

**These instructions have been prepared for operation on the construction site and for the maintenance engineer.**

These instructions are intended to simplify operation of the machine and to avoid malfunctions through improper operation.

Observing the maintenance instructions will increase the reliability and service life of the machine when used on the construction site and reduce repair costs and downtimes.

**Always keep these instructions at the place of use of the machine.**

**Only operate the machine as instructed and follow these instructions.**

**Observe the safety regulations as well as the guidelines of the civil engineering trade association. Observe the safety rules for the operation of road rollers and compactors and the pertinent regulations for the prevention of accidents.**

Stone Construction Equipment, Inc. is not liable for the function of the machine when used in an improper manner and for other than the intended purpose.

Operating errors, improper maintenance and the use of incorrect operating materials are not covered by the warranty.

The above information does not extend the warranty and liability conditions of business of Stone Construction Equipment, Inc.

## Warranty Information

Please enter the following data. This will help expedite any service or warranty work.

1. Machine Type: \_\_\_\_\_

Machine S/N: \_\_\_\_\_

2. Engine Type: \_\_\_\_\_

Engine S/N: \_\_\_\_\_

3. VIN: \_\_\_\_\_

4. Purchase Date: \_\_\_\_\_

5. Dealer/Distributor Information:

Name: \_\_\_\_\_

Address: \_\_\_\_\_

Phone #: \_\_\_\_\_

Fax #: \_\_\_\_\_

### *Location of above information:*

1. Information on S/N tag.
2. Information on engine tag.
3. Information on S/N tag - if applicable.
4. Date you purchased machine.
5. Dealer machine was purchased from.

---

Stone Construction Equipment, Inc.  
P.O. Box 150, Honeoye, New York 14471  
Phone: (800) 888-9926  
Fax: (585) 229-2363

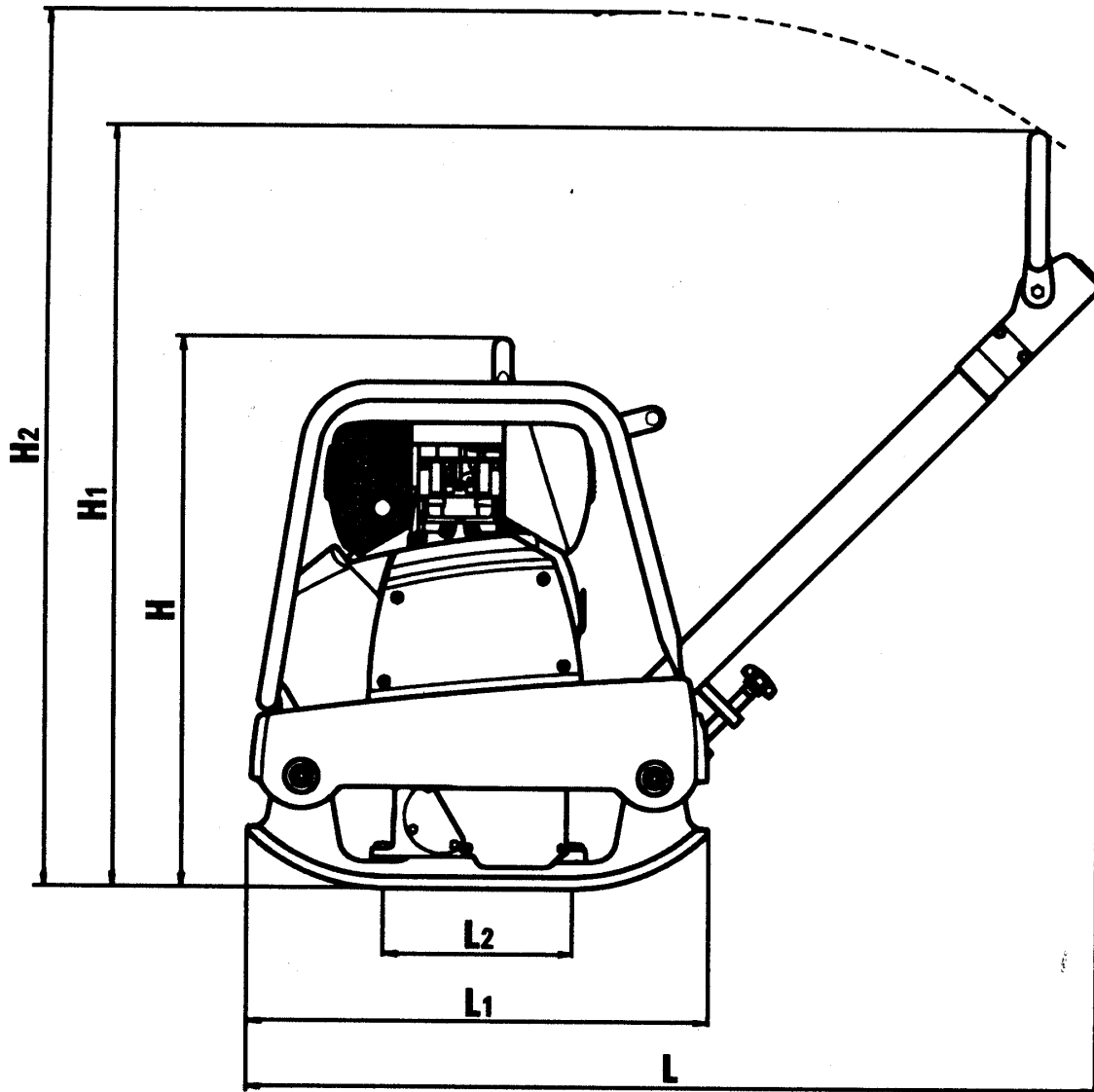


# **TECHNICAL DATA**

# TECHNICAL DATA

RP850G / RP850D

## MACHINE SPECIFICATIONS





# TECHNICAL DATA

RP850G / RP850D

## MACHINE SPECIFICATIONS

<b>RP850G / RP850D SPECIFICATIONS</b>		
<b>MODEL</b>	<b>RP850G</b>	<b>RP850D</b>
<b>Dimensions</b>		
Length L	53.7 in (1365 mm)	53.7 in (1365 mm)
Length L1	33.9 in (860 mm)	33.9 in (860 mm)
Length L2	16.1 in (410 mm)	16.1 in (410 mm)
Height H	29.5 in (750 mm)	30.7 in (780 mm)
Height H1	40.2 in (1,020 mm)	40.2 in (1,020 mm)
Height H2	46.5 in (1,180 mm)	46.5 in (1,180 mm)
Width Basic Unit I	17.7 in (450 mm)	17.7 in (450 mm)
Width Basic Unit II	23.6 in (600 mm)	23.6 in (600 mm)
<b>Weights</b>		
Basic Unit I	529.1 lbs (240 kg)	584.2 lbs (265 kg)
Basic Unit II	562.2 lbs (255 kg)	617.3 lbs (280 kg)
<b>Drive</b>		
Motor Type	Honda GX 270 Gasoline	Hatz 1 B 30 Diesel
Type of Construction	1 Cylinder, 4-Stroke	1 Cylinder, 4-Stroke
Power	9.0 HP (6.6 kW)	6.0 HP (4.6 kW)
by speed	3,100 RPM (51.6 Hz)	3,000 RPM (50 Hz)
Cooling System	Air	Air
Fuel Consumption	.5 gal/hr (2.1 liters/hr)	.3 gal/hr (1.3 liters/hr)
Maximum Sloping Position	20°	30°
Maximum Gradeability	35%	35%
Drive	Via Centrifugal Clutch and V-Belt	Via Centrifugal Clutch and V-Belt
Shift (forward/reverse)	Hydraulic	Hydraulic
<b>Operating Speed</b>		
Basic Unit I	85 ft/min (0 - 26 m/min)	85 ft/min (0 - 26 m/min)
Basic Unit II	85 ft/min 0 - 26 m/min	85 ft/min 0 - 26 m/min
<b>Vibration</b>		
Centrifugal Force	8,542.7 lbs (38 kN)	8,542.7 lbs (38 kN)
Vibration Frequency	3,900 VPM (65 Hz)	3,900 VPM (65 Hz)
<b>Maximum Performance</b>		
Basic Unit I	7,535 ft <sup>2</sup> /hr (700 m <sup>2</sup> /hr)	7,535 ft <sup>2</sup> /hr (700 m <sup>2</sup> /hr)
Basic Unit II	10,075 ft <sup>2</sup> /hr (936 m <sup>2</sup> /hr)	10,075 ft <sup>2</sup> /hr (936 m <sup>2</sup> /hr)
<b>Filing Quantities</b>		
Fuel Tank	1.6 gal (6.0 liters)	1.3 gal (5.0 liters)
<b>Optional Extras</b>		
Vulkollan Plate	X	X
Protective Cover	X	X
Electric Starter	--	X
Mounting Brackets 75	X	X

### NOISE AND VIBRATION DATA

The following listed noise and vibration data according to the EC machine directive in the version (91/368/EEC) was determined at the rated speed of the drive motor with vibration with the machine placed on a resilient base.

Values can deviate in normal use depending on the conditions prevailing at the place use.

### NOISE DATA

The noise emission specified in appendix 1. subclause 1.7.4.f of the EC machine directive for

	The sound pressure level at the operator workplace is $L_{PA}$	The sound power level $L_{WA}$
Honda	103.7 dB(A)	114.8 dB(A)
Hatz	104.7 dB(A)	114.8 dB(A)

These noise levels were measured according to ISO 3744 for the sound power level ( $L_{WA}$ ) and ISO 6081 for the sound pressure level ( $L_{PA}$ ) at the operator workplace.



**SINCE THE PERMISSIBLE NOISE RATING LEVEL OF 89 DB (A) CAN BE EXCEEDED WITH THIS MACHINE, THE OPERATOR MUST WEAR SUITABLE HEARING PROTECTION.**

### VIBRATION DATA

Hand-arm vibration values according to appendix 1, subclause 3.6.3.a of the EC machine directive:

The weighted effective value of acceleration, determined according to ISO 8662, part 1, is about 4.8 m/s<sup>2</sup> (Honda) and 3.9 m/s<sup>2</sup> (Hatz).

**HEALTH & SAFETY**

### SAFETY USE

These machines are designed to carry out the function of compacting material of the non-cohesive, bituminous and granular varieties.

If used correctly they will provide an effective and safe means of compaction and meet the appropriate performance standards.

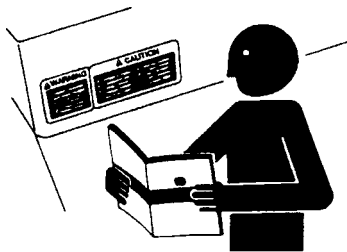
It is essential that the driver/operator of the machine is adequately trained in its safe operation, be authorized to drive it, and have sufficient knowledge of the machine to ensure that it is in full working order, before being put to use.

### SAFETY PRECAUTIONS

Before using this equipment, study this entire manual to become familiar with its operation. Do not allow untrained or unauthorized personnel, especially children, to operate this equipment. Use only factory authorized parts for service.

When warning decals are destroyed or missing, contact the Manufacturer immediately at 1-800-888-9926 for replacement. For the safety of yourself and others, it is imperative that the following rules are observed. Failure to do so may result in serious injury or death.

#### FOLLOW SAFETY INSTRUCTIONS



- Carefully read all safety messages and decals in this manual and on your machine safety signs. Keep decals in good condition. Replace missing or damaged decals. Be sure new equipment components and repair parts include the current safety signs. Replacement safety signs and decals are available through your dealer.
- Learn how to operate the machine and how to use controls properly. Do not let anyone operate without instruction.
- Keep your machine in proper working condition. Unauthorized modifications to the machine may impair the function and/or safety and affect machine life.
- If you do not understand any part of this manual and need assistance, contact your dealer.

---

#### UNDERSTAND SIGNAL WORDS

**▲ DANGER**

**▲ WARNING**

**▲ CAUTION**

- A signal word – DANGER, WARNING, or CAUTION – is used with the safety-alert symbol. DANGER identifies the most serious hazards.
- DANGER or WARNING safety signs are located near specific hazards. General precautions are listed on CAUTION safety signs. CAUTION also calls attention to safety messages in this manual.



- This notation appears before warnings in the text. It means that the step which follows must be carried out to avoid the possibility of personal injury or death. These warnings are intended to help the technician avoid any potential hazards encountered in the normal service procedures. We strongly recommend that the reader takes advantage of the information provided to prevent personal injury or injury to others.

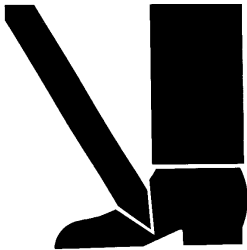
# HEALTH & SAFETY

## Safety Precautions

### USE COMMON SENSE WHEN HANDLING FUELS



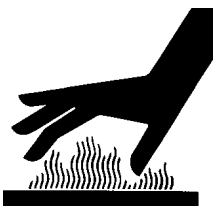
- Transport and handle fuel only when contained in approved safety container.
- Do not smoke when refueling or during any other fuel handling operation.
- Do not refuel while the engine is running or while it is still hot.
- If fuel is spilled during refueling, wipe it off from the engine immediately and discard the rag in a safe place.
- Do not operate the equipment if fuel or oil leaks exist - repair immediately.
- Never operate this equipment in an explosive atmosphere.



- Keep feet clear of all plates.
- Keep work area free of bystanders.
- For foot protection, wear steel toe shoes or toe pads.



- Ear protection required when operating this equipment.



### HOT SURFACES

- Muffler, engine, and engine shroud may be hot.
- Allow all components in the engine compartment to cool before performing any service work.



- Never operate unit in a poorly ventilated or enclosed area.
- Avoid prolonged breathing of exhaust gases.
- Engine exhaust fumes can cause sickness or death.

# HEALTH & SAFETY

## Safety Precautions



- Qualified personnel only. No untrained operators. Serious injury may occur.
- Users must be trained to operate this machine. Read the Operator's Manual and Engine Owner's Manual. Learn to operate this roller safely.
- Do not operate across the sides of hills, machine may tip over.
- Do not operate at the edge of mats or roads, machine may tip over.
- Do not park the machine on hills.



- Hydraulic system produces high pressures--incorrect hose replacement can cause serious personal injury. When performing service, refer to Operator's Manual for hose identification and connections.



- Caution: Escaping hydraulic fluid under pressure can have sufficient force to penetrate the skin, causing serious personal injury.
- Hydraulic fluid escaping under pressure from a very small hole can be almost invisible. Use a piece of cardboard or wood to search for possible leaks.
- Never use your hands to detect pressure leaks.
- Hydraulic tank temperature can reach 180° F maximum.

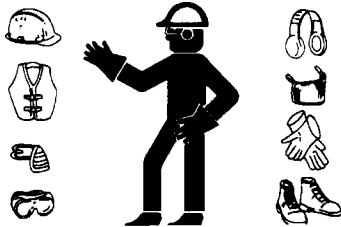


- Pressurized release of fluids from hydraulic system can cause serious burns.

# HEALTH & SAFETY

## Safety Precautions

### WEAR PROTECTIVE CLOTHING



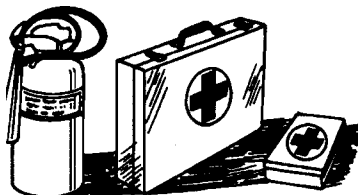
- Wear close fitting clothing and safety equipment appropriate to the job.
- Prolonged exposure to loud noise can cause impairment or loss of hearing.
- Wear a suitable hearing protective device such as earmuffs or earplugs to protect against objectionable or uncomfortable loud noises.
- Operating equipment safely requires the full attention of the operator. Do not wear radio or music headphones while operating machine.

### PRACTICE SAFE MAINTENANCE



- Understand service procedure before doing work. Keep area clean and dry.
- Never lubricate, service or adjust machine while it is moving. Keep hands, feet, and clothing from power-driven parts. Disengage all power and operate controls to relieve pressure. Lower equipment to the ground. Stop the engine. Remove the key. Allow machine to cool.
- Securely support any machine elements that must be raised for service work.
- Keep all parts in good condition and properly installed. Fix damage immediately. Replace worn or broken parts. Remove any buildup of grease, oil, or debris.
- Disconnect battery ground cable (-) before making adjustments on electrical systems or welding on machine.

### PREPARE FOR EMERGENCIES



- Be prepared if a fire starts.
- Keep a first aid kit and fire extinguisher handy.
- Keep emergency numbers for doctors, ambulance service, hospital, and fire department near your telephone.



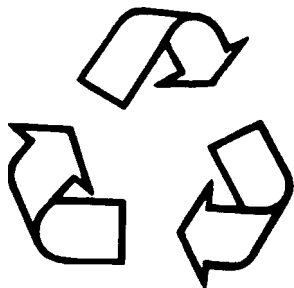


- Starting fluid (ether) is highly flammable, do not use or an explosion or fire may result.



### PREVENT BYPASS STARTING

- Avoid possible injury or death from engine runaway.
- Do not start engine by shorting across starter terminal. Engine will start with PTO engaged if normal circuitry is bypassed.
- Start engine only from operator's station with PTO disengaged or in neutral.



### DISPOSE OF WASTE PROPERLY

- Improperly disposing of waste can threaten the environment and ecology. Potentially harmful waste used with equipment include such items as oil, fuel, coolant, brake fluid, filters, and batteries.
- Use leakproof containers when draining fluids. Do not use food or beverage containers that may mislead someone into drinking from them.
- Do not pour waste onto the ground, down a drain, or into any water source.
- Air conditioning refrigerants escaping into the air can damage the Earth's atmosphere. Government regulations may require a certified air conditioning service center to recover and recycle used air conditioning refrigerants.
- Inquire on the proper way to recycle or dispose of waste from your local environmental or recycling center.



**MAINTENANCE**

# MAINTENANCE

RP850G / RP850D

## GENERAL NOTES

Careful maintenance:

- ♦ increased service life
  - ♦ increased function
  - ♦ reduced downtimes
  - ♦ increased reliability
  - ♦ reduced repair costs
- Observe the safety regulations!
  - Maintenance work should only be carried out when the engine is shut off.
  - The engine and machine should be cleaned thoroughly before carrying out maintenance work.
  - Park the machine on a flat surface and secure it.
- Ensure that operating materials and replaced parts are disposed of safely and in an environmentally-friendly way.
  - Before commencing work on any electrical equipment, disconnect the battery and cover it with insulating materials.
  - DO NOT confuse “PLUS” and “MINUS” poles on the battery.
  - It is essential that short-circuits be prevented in cables carrying current.
  - Burnt out light bulbs in indicator lamps should be replaced immediately.
  - When cleaning the machine with a high-pressure water jet, do not spray the electrical components directly.
  - After washing the components, blow-dry them with compressed air in order to prevent surface leakage current and corrosion.

# MAINTENANCE

RP850G / RP850D

## MAINTENANCE SCHEDULE (Hatz = ● / Honda = ◆)

Works	Intervals	Daily	20 Hours	50 Hours	100 Hours	250 Hours	500 Hours	As Required
Clean machine		●◆						
Check engine oil level <sup>1)</sup>		●◆						
Change engine oil <sup>1)</sup>			●◆ (first time)		◆	●		
Clean oil filter <sup>1)</sup>			● (first time)			●		
Check air filter <sup>1)</sup>		●◆						
Change air filter <sup>1)</sup> (● XA 504 26 000) (◆ X 17210 ZE2 822)							●	◆
Change fuel filter <sup>1)</sup> (● XA 504 40 500)							●	
Check exciter oil level				●◆				
Change exciter oil (or annually)						●◆		
Check hydraulic oil level								●◆
Check v-belt					●◆			
Retighten screwed connections					●◆			
Check rubber buffers					●◆			
Check, adjust the valve clearance <sup>1)</sup>						●◆		

<sup>1)</sup> Observe the engine manual

## Lubrication Schedule

Lubrication Point	Quantity	Change intervals (operating hours)	Lubrication	Order No.
Honda	1.1 liters	100 *	Engine Oil API SG-CE SAE 10W40	806 01 100
Hatz	1.1 liters	250 *	Engine Oil API SG-CE SAE 10W40	806 01 100
Exciter	1.1 liters	500 ** or annually	Engine Oil API SG-CE SAE 10W40	806 01 100
Hydraulic	.65 liters	not necessary	Spec. Hydro-Oil ISO-VG32	806 01 030

\* first time after 20 op. hours

\*\* first time after 100 op. hours

## Alternative Lube Oil Table

	Engine Oil API SG-CE SAE 10W40	Gear Oil in Accordance With JDM J 20 A	Spec. Hydro-Oil ISO- VG32	ATF Oil
<b>DEUTZ OEL</b>	HD-C 10W40 TLL 10W40 *	GO-SP	Spec. Hydro-OI W32, H-EP 32 BA **	Dexron II D
<b>ARAL</b>	Multi Turboral	Fluid HGS	-----	Dexron II D
<b>BP</b>	Vanellus Multigr., Vanellus FE *	Hydromatic TF-SD	Energol EHPM 32	Dexron II D
<b>ESSO</b>	XD 3+LDX, CDX	Torque Fluid 56	Univis N 32	Dexron II D
<b>FINA</b>	Kappa FE; Kappa Turbo DI	Transfluid AS	Hydran TSX 32; Biohydran TMP 32 **	Finamatic II D
<b>SHELL</b>	Super 3	Donax TD	Tellus W 32, Naturelle HFE 32 **	Dexron II D
<b>TOTAL</b>	Rubia XT, Rubia FE *	-----	-----	Dexron II D

\* semi-synthetic light-duty oils

\*\* biological multi-purpose hydraulic oils

# MAINTENANCE

RP850G / RP850D

## MAINTENANCE WORK (Honda Engine)

**Attention:** Only the maintenance work that has to be performed daily is included in this operating manual. Please refer to the engine operating manual and to the maintenance instructions and intervals listed therein.

### Filling up with fuel

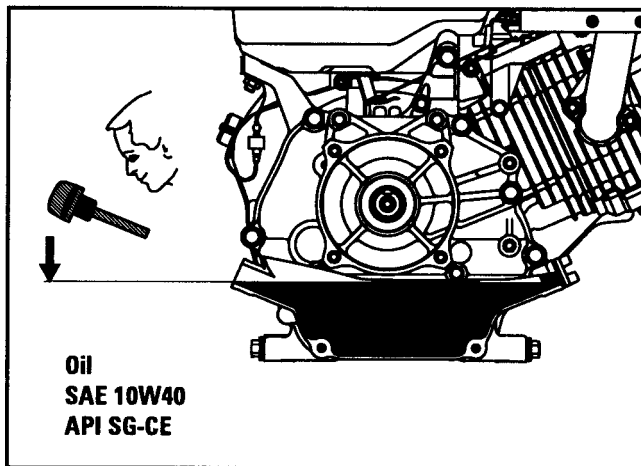
**Danger:**

- Fill fuel tank only when engine is switched OFF.
- No naked flames.
- No smoking.
- NEVER fill fuel tank in enclosed areas.

To check fuel level:

1. Clean the area around the fuel filling socket.
2. Open the cap.
3. Check the fuel level visually.
4. If necessary, fill up with fuel.  
(unleaded automotive gasoline)

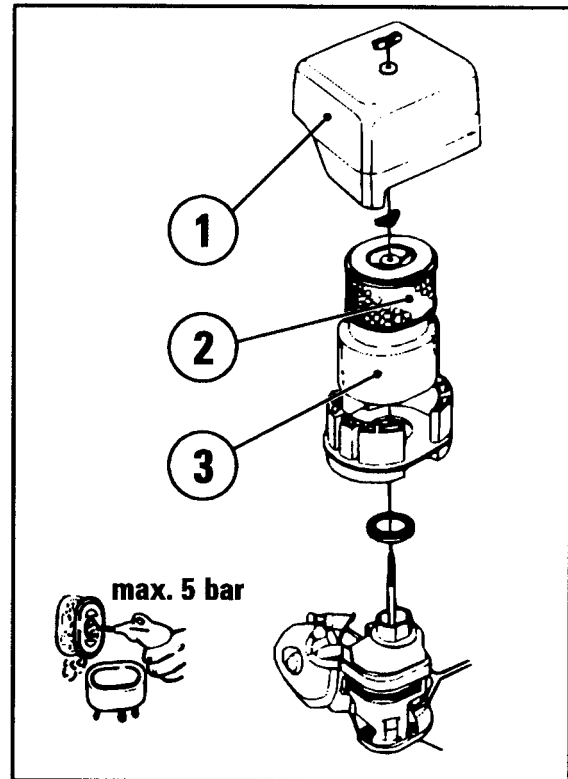
### Checking the engine oil level



1. Park the machine horizontally.
2. Clean the area around the oil filler cap.
3. Open the oil filler cap.
4. Check the oil level.
5. Refill up to the edge of the oil filler cap if necessary.
6. Check the seal on the dipstick and replace if necessary.
7. Close the oil filler cap.

8. Allow the engine to run for approximately 1 minute and check oil level again with engine switched off.

### Cleaning the air filter element



**Attention:**

- NEVER run the engine without the air cleaner. Rapid engine wear will result.
- DO NOT allow dust to enter the carburetor.

1. Remove the filter cover (1).
2. Take out the filter element (2 & 3).
3. Check the filter element, replace if damaged.

#### For slight clogging:

1. Clean the filter element (2) by tapping lightly.
2. Blow it from inside to outside with dry, compressed air.

#### For heavy clogging:

1. Wash the filter element (3) in a non-flammable cleaning solution and allow to dry thoroughly.

# MAINTENANCE

RP850G / RP850D

## **Danger:**

- NEVER use fuel or cleaning solutions with a low flash point for cleaning the filter element!
  - DO NOT smoke in the working area, avoid open fire and sparks - fire and explosion hazard!
  - Hazard of eye injuries - use safety goggles!
1. Soak the filter element (3) with clean motor oil, squeeze out excess oil.
  2. Replace the filter element (2 & 3).
  3. Fit the cover (1) and fasten.

## **MAINTENANCE WORK (Hatz Engine)**

**Attention:** Only the maintenance work that has to be performed daily is included in this operating manual. Please refer to the engine operating manual and to the maintenance instructions and intervals listed therein.

## **Filling up with fuel**

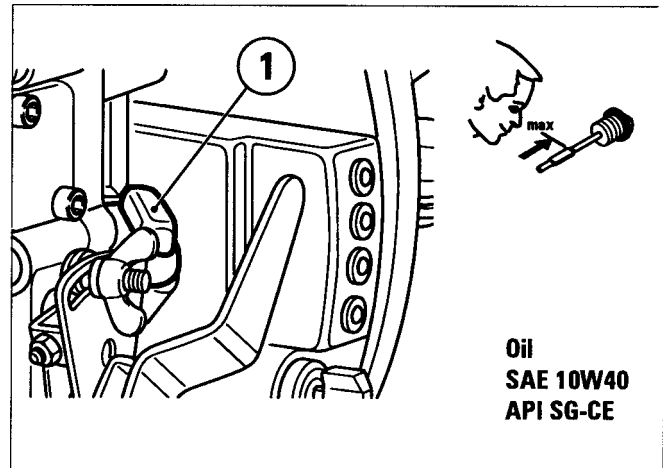
### **Danger:**

- Fill fuel tank only when engine is switched OFF.
- No naked flames.
- No smoking.
- NEVER fill fuel tank in enclosed areas.

To check fuel level:

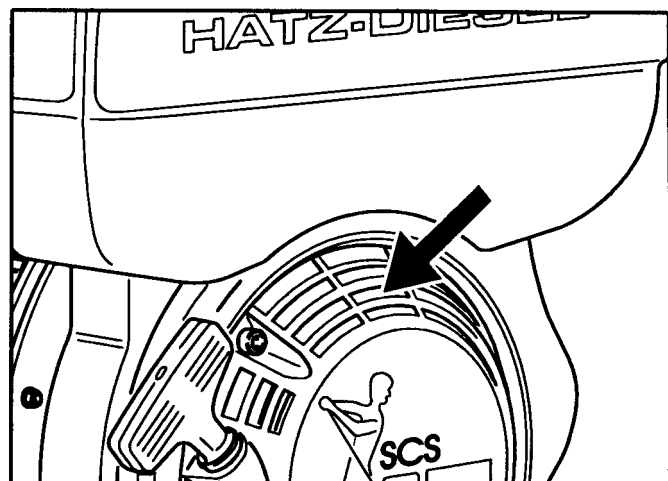
1. Clean the area around the fuel filling socket.
2. Open the cap.
3. Check the fuel level visually.
4. If necessary, fill up with fuel (diesel).

## **Checking the engine oil level**



1. Position the vibration plate so that the motor is in a vertically upright position.
2. Clean around the dipstick area.
3. Pull out dipstick (1) and wipe clean.
4. Push dipstick back in with twisting movement by hand then pull out again with similar twisting movement.
5. Read off the oil level on the dipstick and, if necessary, top to the “maximum” mark.

## **Checking cooling air-/combustion air-intake**



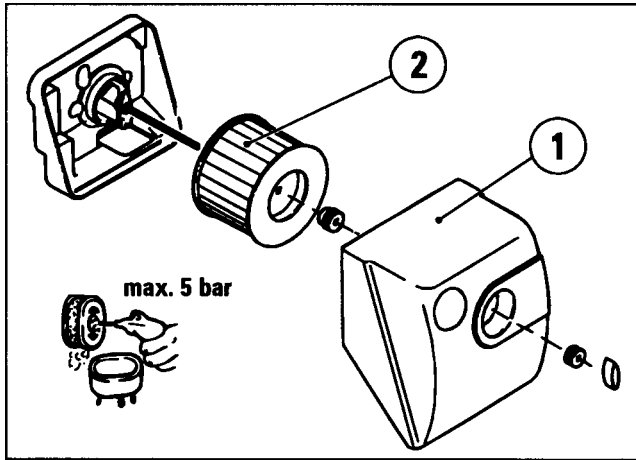
Check intake opening for combustion air and cooling air intakes. Remove coarse obstructions such as leaves, stones and earth.



# MAINTENANCE

RP850G / RP850D

## Cleaning the dry air filter



The maintenance intervals for the filter cartridge depend on the amount of dust. A blocked filter is apparent from a lack of performance and/or black smoke.

1. Unscrew lid of air filter (1).
2. Remove filter cartridge (2).
3. Check the filter element for damage to the filter paper and check sealing surfaces. Change damaged filter elements.
4. Clean filter housing and lid.

### **Attention:**

- **NEVER run the engine without the air cleaner - rapid engine wear will result**
- **Make sure that no dirt or foreign bodies get into the suction opening to the motor.**

Replace filter element or clean appropriately.

If there is any dry fouling: Blow out the filter cartridge with dry air under pressure 75PSI (max. 5 bar) from the inside outwards, until no more dust comes out.

### **Danger:**

- **Hazard of eye injuries - use safety goggles!**

If there is damp or oily fouling or if the cartridge is damaged in any way, replace it.

### **Cleaning**

Clean the machine thoroughly daily.

### **Attention:**

- After cleaning, check all cables, hoses, pipes and screwed fittings for leaks, loose connections, chafe marks and other damage.
- Any faults that are detected should be rectified immediately.
- **DO NOT use any flammable or aggressive substances for cleaning purposes.**

# MAINTENANCE

RP850G / RP850D

## TORQUE INFORMATION

### Property Class 8.8

ZINC-PLATED

#### Fine Thread

SIZE	Nm	ft. lbs.
M4	3	2
M5	6	4
M6	10	7
M8	25	18
M10	49	36
M12	85	62
M14	135	99
M16	210	154
M18	300	221
M20	425	313
M22	580	427
M24	730	538

The tightness categories relate to bolts with untreated, unlubricated surface.

The figures result in 90% exploitation of the limit of elasticity for a friction coefficient  $\mu = 0.14$ .

Use a torque wrench to check that the tightening torques are observed.

The figures indicated do not apply if lubricant MoS2 is used.

**Important:** Self-tapping nuts have to be replaced after every disassembly.

### Property Class 10.9

ZINC-PLATED

#### Fine Thread

SIZE	Nm	ft. lbs.
M4	4,4	3
M5	8,7	6
M6	15	11
M8	36	26
M10	72	53
M12	125	92
M14	200	147
M16	310	228
M18	430	317
M20	610	449
M22	830	612
M24	1050	774

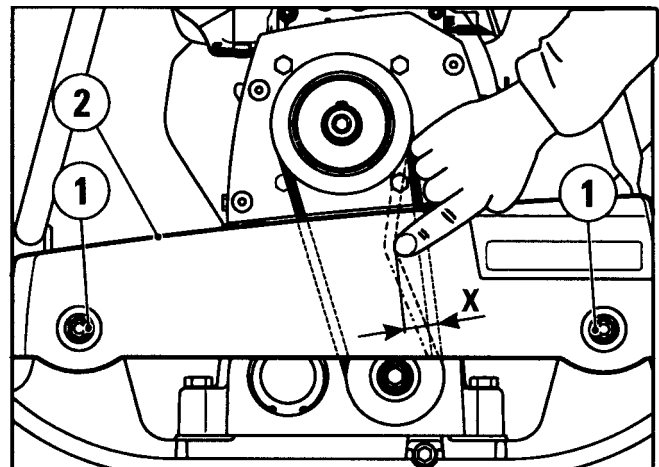
## SCREW CONNECTIONS

With vibration equipment, it is important to check the screwed connections periodically to ensure that they are screwed tight. Observe tightening torques.

## CHECKING RUBBER BUFFER

Check the rubber buffer for cracks and fractures and for a tight fit. Replace immediately if damaged.

## CHECKING V-BELT



1. Remove v-belt guard.
2. Check v-belt for tension and condition.
3. Undo the nuts (1) of the rubber stops on the outside.
4. Push the upper tray (2) upwards on both sides.

### Property Class 12.9

ZINC-PLATED

#### Fine Thread

SIZE	Nm	ft. lbs.
M4	5	4
M5	10	7
M6	18	13
M8	43	31
M10	84	61
M12	145	106
M14	235	173
M16	365	269
M18	500	368
M20	710	523
M22	970	715
M24	1220	899

Conversion Factor: 1 ft. lb. = 1.3558 N

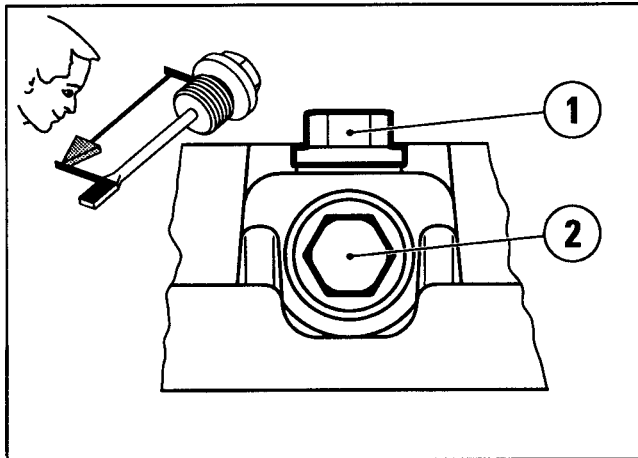
# MAINTENANCE

RP850G / RP850D

**Important:** It is important to ensure that the frame is also actually pushed on the rubber stop contact surfaces and not just the rubber elements are stretched and then spring back again. If necessary, apply light blows with a hammer to knock the rubber stops downwards.

1. Both buffers should be equally pre-tensioned.
2. Tighten nuts (1).
3. Crank the drive manually and re-check tension and correct if necessary.
4. Replace v-belt guard.

## EXCITER: OIL LEVEL / OIL CHANGE



**Important:** Check/change exciter oil when it is warm.

### **Danger:**

**Take care when draining hot oil - danger of scalding.**

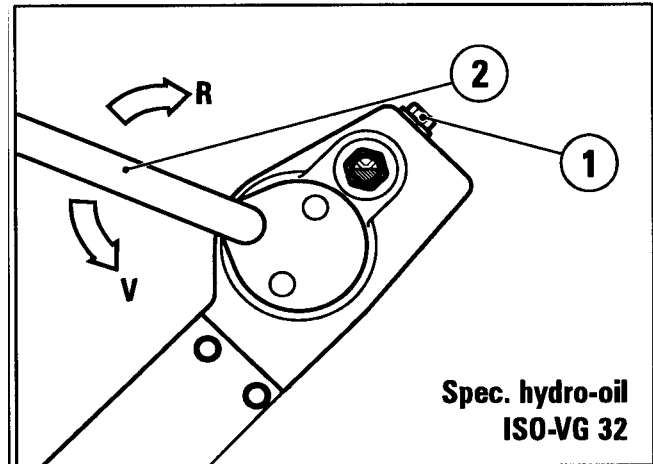
1. Unscrew oil filling plug (1) and oil drain plug (2).
2. Drain old oil.
3. Replace oil drain plug (2).
4. Fill new oil via filler hole (1). For oil quantity and quality, see lubrications specifications chart.
5. Replace oil filling plug (1).

### **Attention:**

- Collect oil which flows out and dispose of oil without harm to environment.
- In order to ensure sufficient lubrication, the distance of the oil level must be at the upper

dip rod mark (see diagram below). If the oil level is too low, the gear unit can be damaged through overheating.

## FILLING AND BLEEDING THE CIRCUIT



1. Release locking screw (1).
2. Set throttle lever (2) to "V".
3. Pour in hydraulic fluid while continually changing the throttle lever position.

**Important:** To ensure correct bleeding, from time to time place the shaft vertically.

Stop filling when:

- A distinct "clicking" noise is heard in the exciter while shifting the lever.
- You no longer feel a cushion of air when moving the throttle lever.

### **Attention:**

**When filling, the circuit pat is shortened.**

1. To check oil level, start engine and bring up to operating speed.
2. Move throttle lever several times backwards and forwards between "V" and "R".
3. The correct oil level should be somewhere in the area shown (see illustration). At this point, the throttle lever must be in the "V" position.
4. If the level is too low, top up with hydraulic fluid. If too high, drain off excess fluid.
5. With the machine running and the throttle lever in the "V" position, close locking screw (1).



**EXPLODED VIEWS  
WITH PARTS**

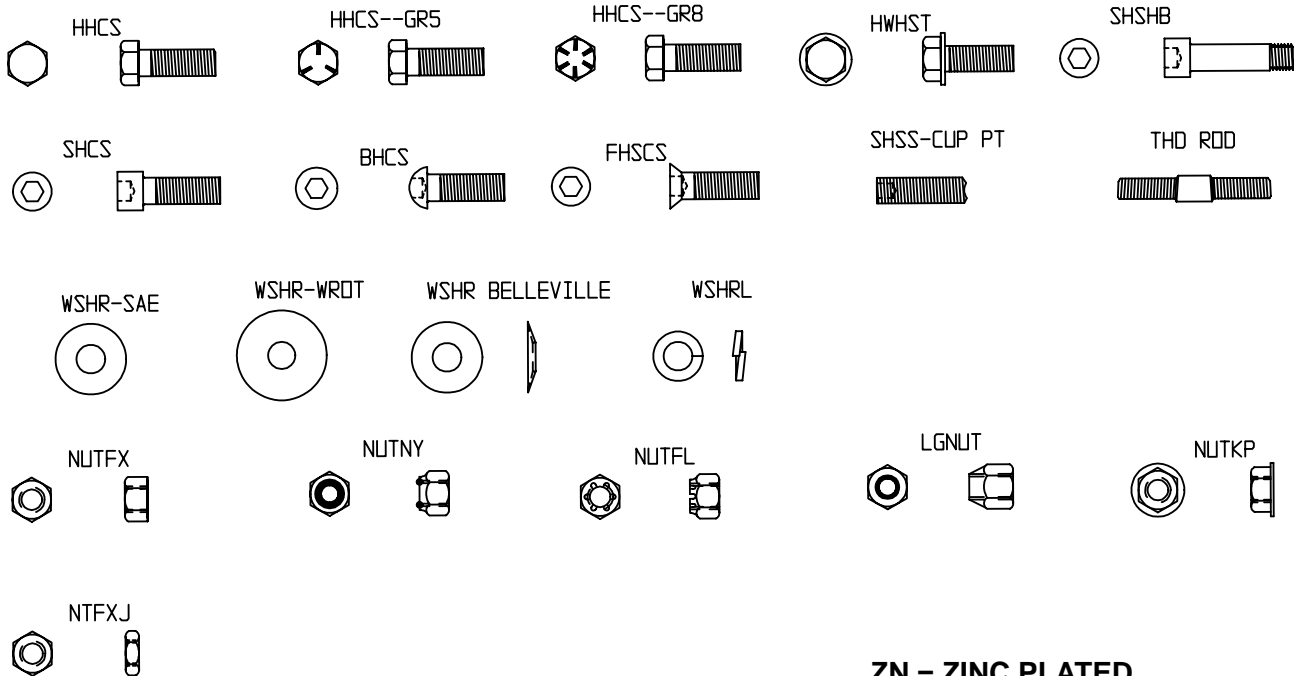


# PARTS LIST

Exploded Views with Parts

Hardware Key .....	31
Lower Plate .....	32 - 33
Eccentric Assembly .....	34 - 35
Upper Deck Assembly - Honda .....	36 - 37
Clutch Assembly .....	38 - 39
Tow-Bar Grip .....	40 - 41
Directional Control Arm .....	42 - 43
Decal Identification .....	44 - 45

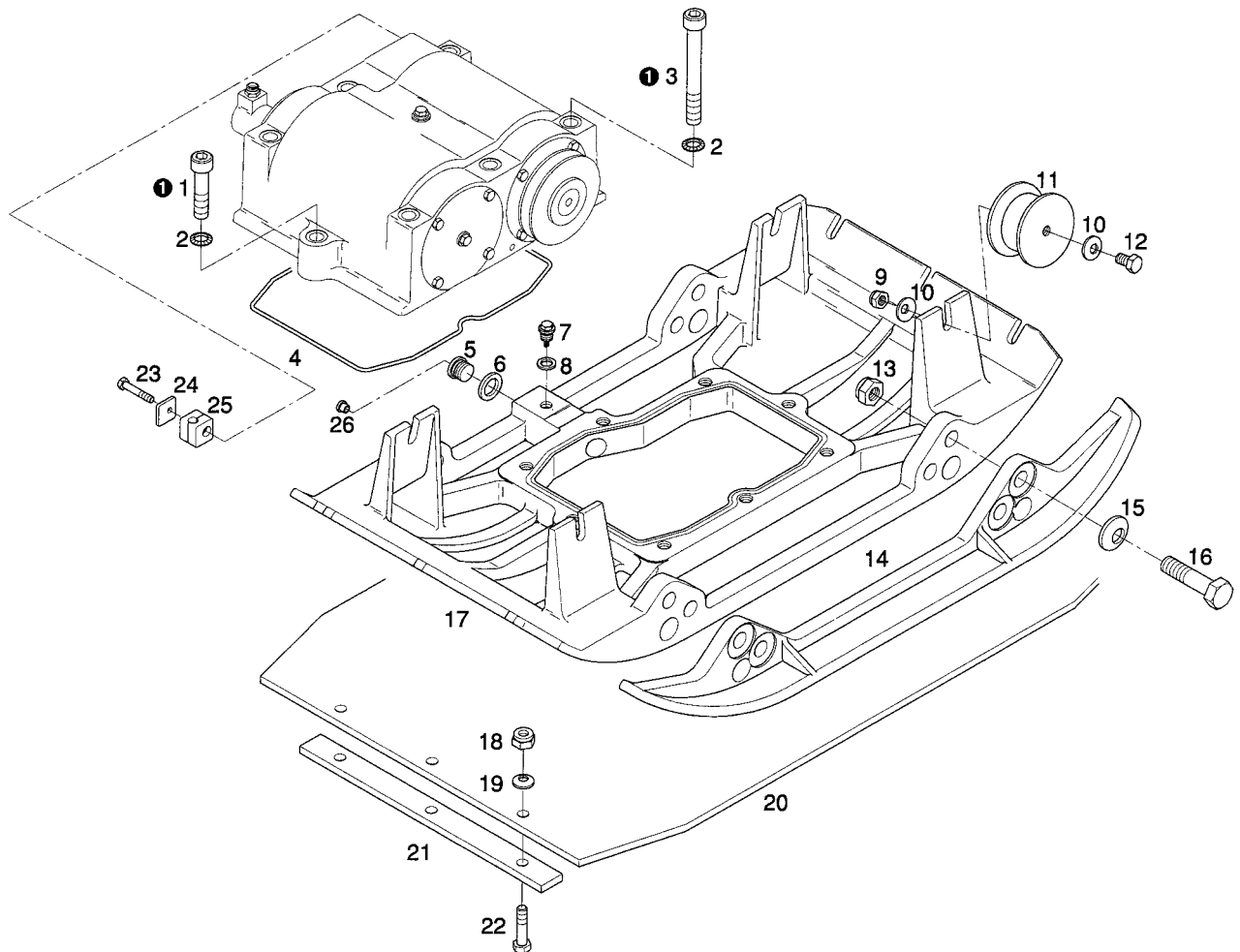
## HARDWARE KEY



**ZN = ZINC PLATED**  
**BLK = BLACK OXIDE FINISH**

# PARTS LIST

Lower Plate



① Loctite 262



# PARTS LIST

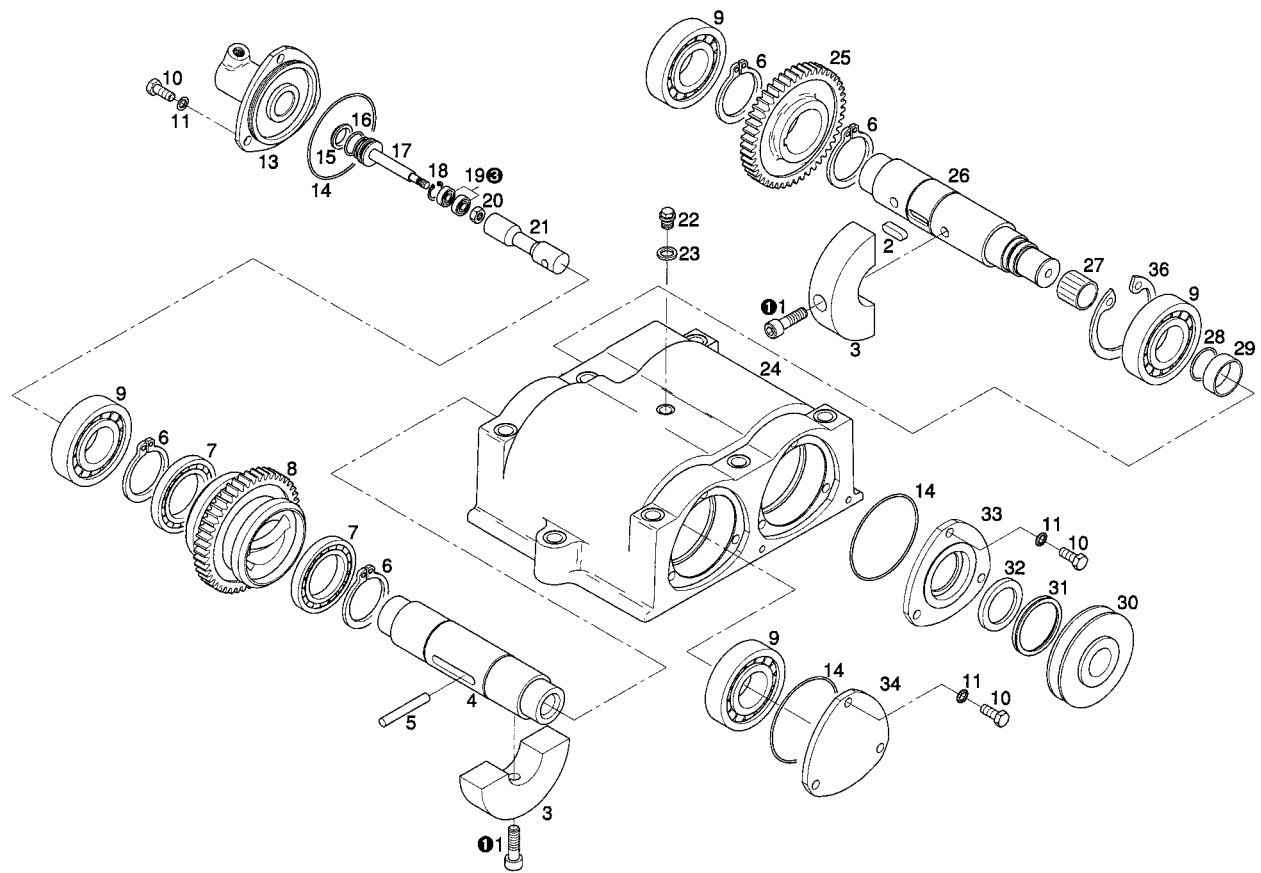
Lower Plate

ITEM	PART NO.	DESCRIPTION	QUANTITY	DIN
1 *	63698	SHCS M16 x 70	2	912
2	60507	WSHRL Ribbed M16 Plated	8	792
3*	63699	SHCS M16 x 140	6	912
4	63700	O-Ring OR 305 x 5	1	
5	62049	Screw Plug M22 x 1.5 5.8	1	908
6	61866	WSHR Joint A22 x 29	1	7603
7	63297	Oil Measuring Plug	1	
8	60146	Ring Sealing A14 x 18 Copper	1	7603
9	60464	NUTNY M12 ZN CL8	4	985
10	60189	Spring Washer M12 ZN	8	6796
11	63701	Rubber Buffer	4	
12	80808	HHCS M12-1.75 x 20 8.8 ZN	4	933
13	63702	Hexagon Nut M20	8	985
14	62055	Mounting Bracket	2	
15	61702	Spring Washer M20	8	6796
16	62056	HHCS M20 x 80 8.8	8	931
17	63703	Base Plate	1	
18	60464	NUTNY M12 ZN CL8	6	985
19	60189	Spring Washer M12 ZN	6	6796
20	62054	Vulkollan Plate	1	
21	63704	Flat Steel	2	
22	62053	HHCS M12 x 50 8.8	6	931
23	62401	HHCS M6 x 45 8.8	1	931
24	63705	Plate	1	
25	63706	Clip	1	
26	63707	Plug	1	

\* Loctite

# PARTS LIST

## Eccentric Assembly



① Loctite 262

③ Shell Alvania R3

# PARTS LIST

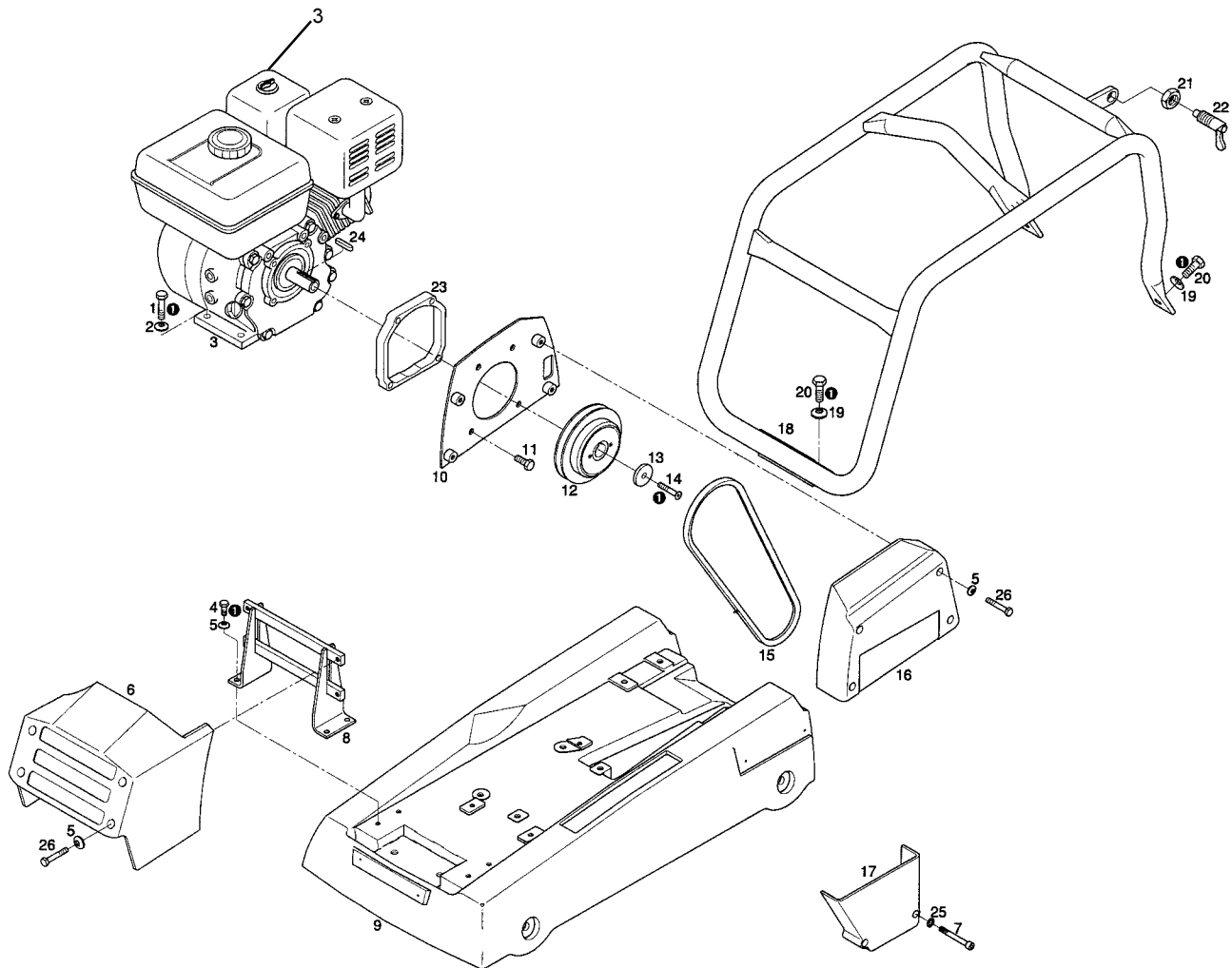
## Eccentric Assembly

ITEM	PART NO.	DESCRIPTION	QUANTITY	DIN
1*	61303	SHCS M12 x 40 10.9	4	912
2	61567	Key M10 x 8 x 32	1	6885
3	63708	Exciter Weight	4	
4	63709	Exciter Shaft	1	
5	63710	Cylindrical Pin	1	6325
6	63711	Safety Ring A55 x 2	4	471
7	63712	Groove Ball Bearing	2	
8	63713	Gear Wheel	1	
9	60398	Cylindrical Roller Bearing	4	
10	60329	HHCS M10 x 25	9	933
11	60324	WSHRL Ribbed M10	9	
13	63714	Switch Cover	1	
14	61696	O-Ring OR 92 x 3	3	
15	63715	Piston Cup	1	
16	63716	O-Ring OR24.2 x 3	1	
17	63717	Piston	1	
18	63718	Safety Ring J22 x 1	1	472
19	63719	Groove Ball Bearing	2	
20	60462	NUTNY M8 CL8	1	985
21	63720	Guide Piston	1	
22	61563	Screw Plug M14 x 1.5 5.8 ZN	1	910
23	60146	Ring Sealing A14 x 18 Copper	1	7603
24	63721	Exciter Housing	1	
25	63722	Gear Wheel	1	
26	63723	Exciter Shaft	1	
27	63724	Tolerance Ring	1	
28	61442	O-Ring OR35 x 3	1	
29	63725	Internal Ring	1	
30	63726	V-Belt Pulley	1	
31	63727	V-Ring	1	
32	62062	Rotary Shaft Seal	1	
33	63728	Bearing Cover	1	
34	63729	Bearing Cover	1	

\* Loctite

# PARTS LIST

## Upper Deck Assembly - Honda



① Loctite 262

# PARTS LIST

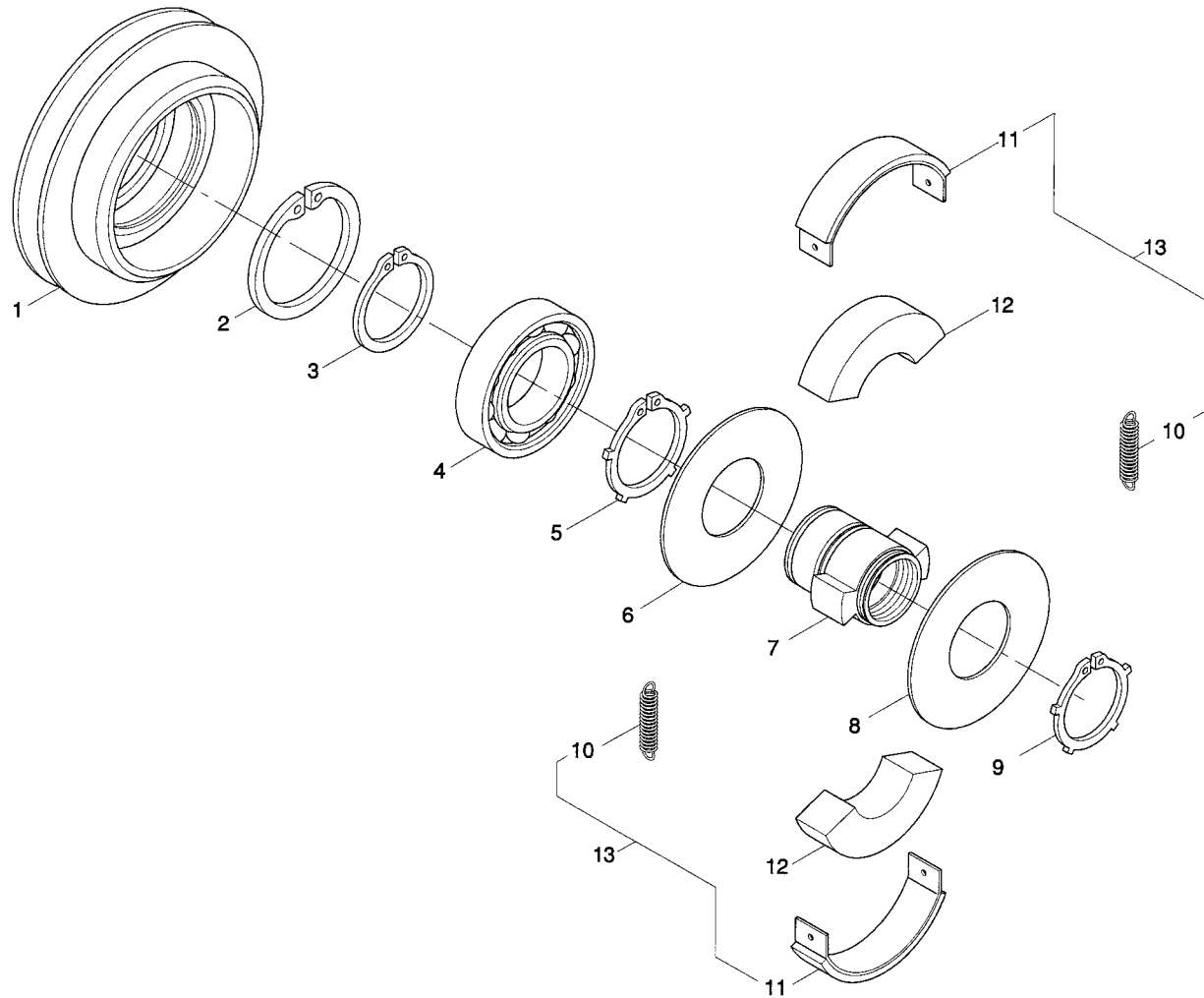
## Upper Deck Assembly - Honda

ITEM	PART NO.	DESCRIPTION	QUANTITY	DIN
1*	62092	HHCS M10 x 40 8.8	4	931
2	62197	Spring Washer M10	4	6796
3	30306	Engine Honda 9HP	1	
4*	60903	HHCS M8 x 16 8.8	4	933
5	61086	Spring Washer M8 ZN	13	6796
6	63730	Panel	1	
7	63305	SHCS M8 x 50 8.8 ZN	2	912
8	63368	Holder	1	
9	63731	Upper Part	1	
10	63371	V-Belt Guard	1	
11	61846	HHCS M10 x 35 8.8 ZN	4	933
12	63732	Centrifugal Clutch Assembly ZSB	1	
13	63373	Washer	1	
14*	62390	Countersunk Screw M8 x 30 8.8	1	7991
15	63733	V-Belt 12.5 x 968 LA	1	
16	63374	V-Belt Guard	1	
17	63734	V-Belt Guard	1	
18	63735	Hoop Guard	1	
19	60189	Spring Washer M12 ZN	4	6796
20*	80887	HHCS M12-1.75 x 25 8.8 ZN	4	933
21	60975	NUTFX M20 x 1.5	1	936
22	61554	Locking Bolt	1	
23	63370	Distance Plate	1	
24	63736	Key A 7 x 7 x 36	1	6885
25	60438	Washer Ribbed M8 ZN	2	
26	61213	Screw M8 x 50 (8.8)	8	

\* Loctite

# PARTS LIST

## Clutch Assembly



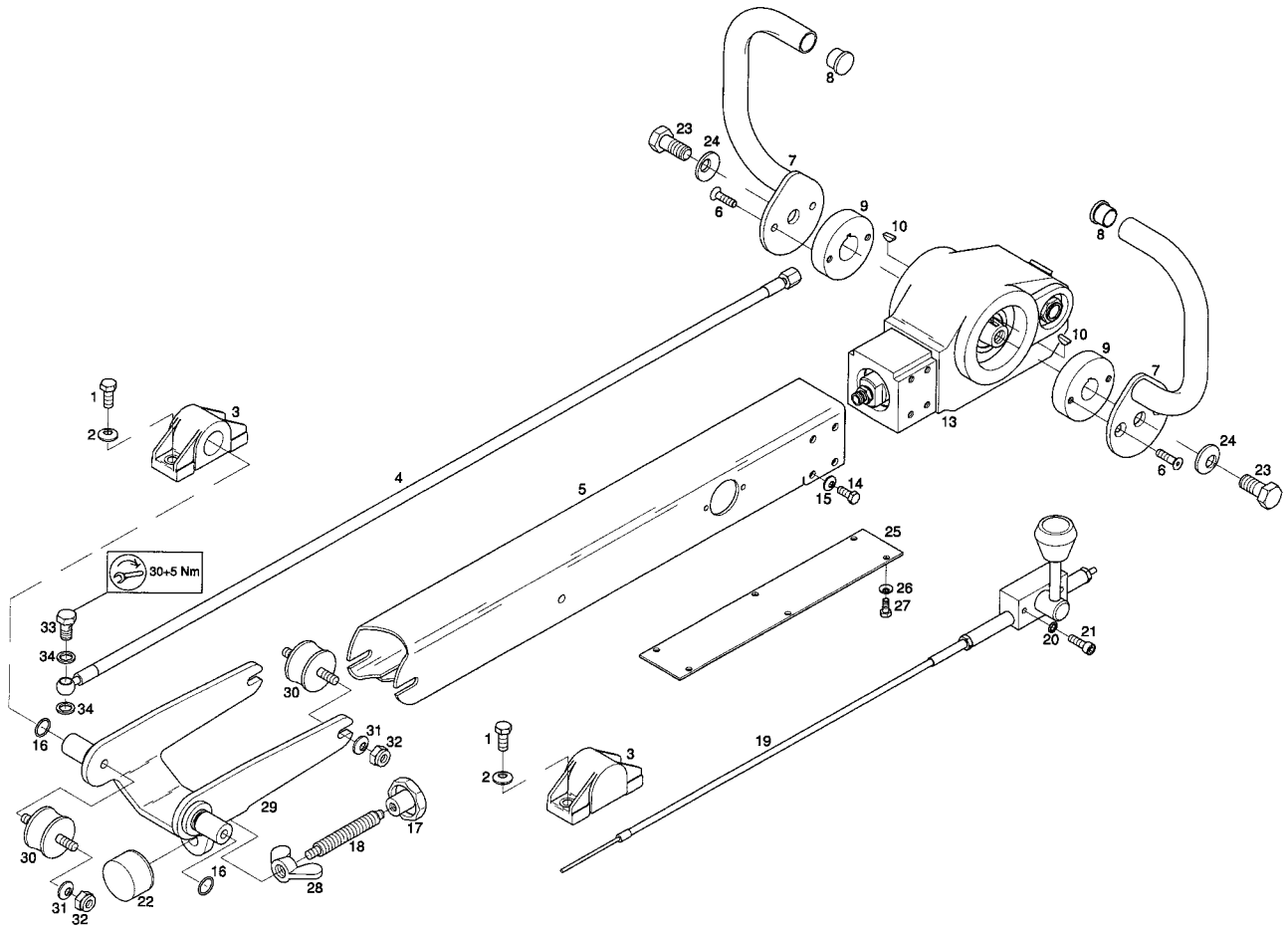
# PARTS LIST

Clutch Assembly

ITEM	PART NO.	DESCRIPTION	QUANTITY	DIN
1	63737	Housing	1	
2	60279	Circle Clip J62 x 2	1	
3	60555	Snap Ring	1	
4	60293	Bearing 6007 - 2RS	1	
5	61579	Ring A40 x 1.75 L	1	
6	63352	Disc	1	
7	63738	Hub	1	
8	63739	Disc	1	
9	62251	Retaining Ring	1	
10	63740	Tension Spring	2	
11	63357	Lining Strap	2	
12	63356	Centrifugal Weight	2	
13	63741	Reparation Kit	1	

# PARTS LIST

## Tow-Bar Grip





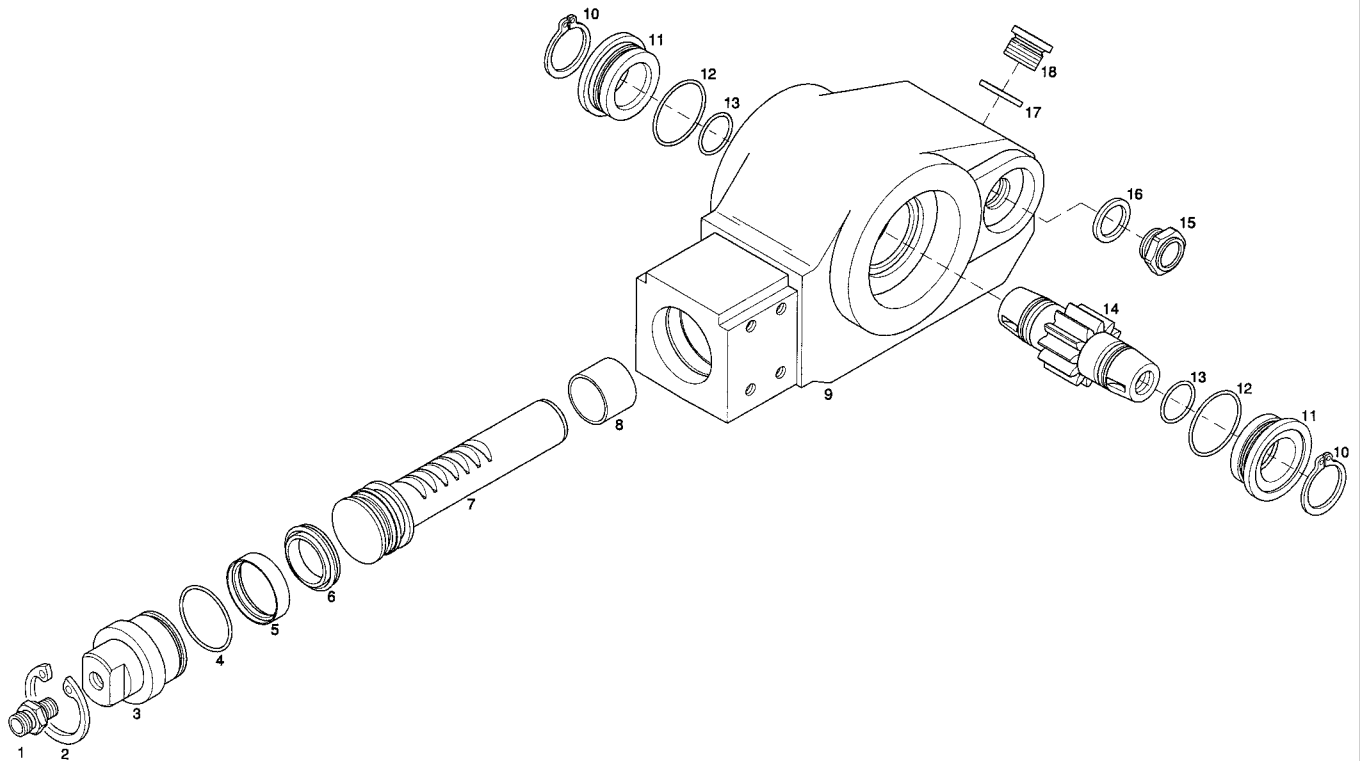
# PARTS LIST

Tow-Bar Grip

ITEM	PART NO.	DESCRIPTION	QUANTITY	DIN
1	60607	HHCS M10 x 30 8.8	4	933
2	62197	Spring Washer M10	4	6796
3	63742	Tow Bar Bearing	2	
4	63743	Control Line Cpl.	1	
5	63744	Tow Bar	1	
6	63745	Countersunk Screw M8 x 25 A3B	4	7991
7	63746	Tow Bar Grip	2	
8	63316	Plug	2	
9	63747	Friction Clutch	2	
10	63748	Woodruf Key 5 x 6.5	2	6888
13	63749	Control Valve	1	
14	63750	HHCS M8 x 20 A3B	8	933
15	61086	Spring Washer M8 ZN	8	6796
16	61653	O-Ring OR18 x 2.5	2	
17	63751	Star Grip	1	
18	63312	Thread Rod	1	
19	63752	Speed Control Cable Assembly ZSB	1	
	63753	Transmitting Box	1	
	63754	Control Cable	1	
	63755	Cable	1	
20	60402	WSHRL Ribbed M6 ZN	2	
21	62361	SHCS M6 x 25 8.8	2	912
22	63756	Rubber Buffer	1	
23	81005	HHCS M16-2 x 35 8.8 ZN	2	933
24	60722	Spring Washer M16	2	6796
25	63757	Cover	1	
26	60402	WSHRL Ribbed M6 ZN	6	
27	62467	HHCS M6 x 10 BN 8.8	6	933
28	63758	Wing Nut M16	1	315
29	63759	Tow Bar Console	1	
30	63760	Rubber Buffer	4	
31	62197	Spring Washer M10	4	6796
32	63761	Hexagon Nut M10	4	985
33	63762	Hollow Screw	1	
34	60146	Ring Sealing A14 x 18 Copper	2	7603

# PARTS LIST

## Directional Control Arm



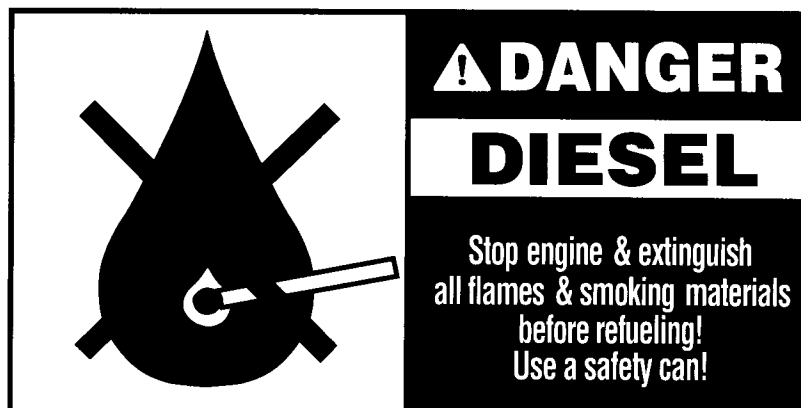
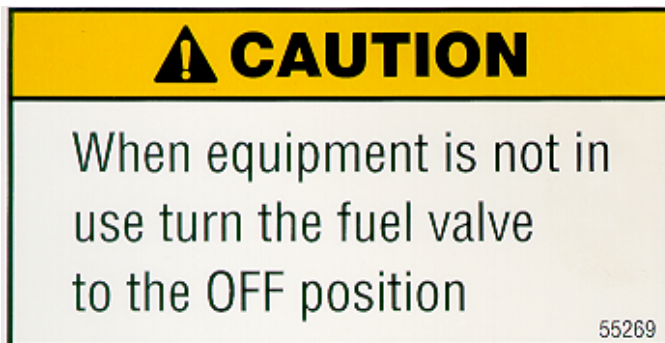
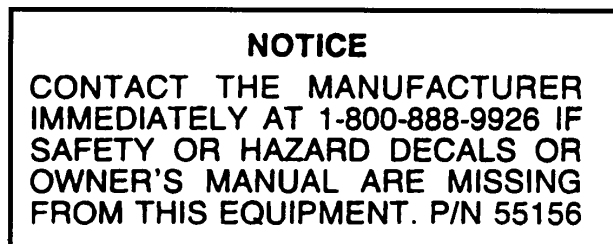
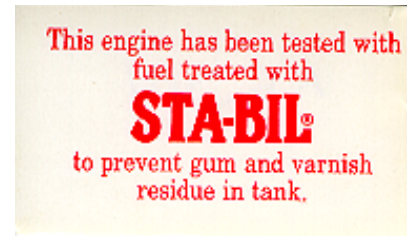
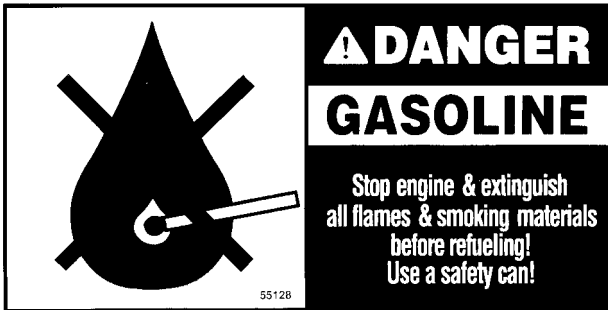
# PARTS LIST

Directional Control Arm

ITEM	PART NO.	DESCRIPTION	QUANTITY	DIN
1	61691	Stud Standpipe Male	1	
2	60304	Retaining Ring J52 x 2	1	472
3	63763	Valve Cover	1	
4	63764	O-Ring OR40 x 2.5	1	
5	76877	Seal Ring	1	
6	63765	Piston Cup	1	
7	63766	Piston Rod	1	
8	63767	Bushing	1	
9	63768	Valve Housing	1	
10	60185	Ring Snap A230 x 1.5	2	471
11	63769	Bush	2	
12	63764	O-Ring OR40 x 2.5	2	
13	61782	O-Ring 25 x 2.5	2	
14	63770	Pinion Shaft	1	
15	60200	Oil Site Plug	1	
16	63771	Joint Washer 21.5 x 28.7 x 2.5	1	
17	60148	Copper Gasket	1	
18	62049	Screw Plug M22 x 1.5 5.8	1	908

# PARTS LIST

Decal Identification



# PARTS LIST

## Decal Identification

ITEM	PART NO.	DESCRIPTION	QUANTITY
1	55128	Decal Danger Gasoline (Honda only)	1
2	55214	Decal Sta-Bil (Honda only)	1
3	55156	Decal Notice (Honda & Hatz)	1
4	55269	Fuel Shutoff (Honda only)	1
5	55149	Decal Ear Protection (Honda & Hatz)	1
6	55148	Decal Warning Diesel (Hatz only)	1



**CALIFORNIA PROPOSITION 65 WARNING:  
Operation of this equipment and/or engine exhaust  
from this product contains chemicals known to the  
State of California to cause cancer, birth defects,  
or other reproductive harm.**



*Bred Tough. Technology Born to Work.  
The Way It Ought To Be.*

Stone Construction Equipment, Inc.  
P.O. Box 150, Honeoye, New York 14471  
Phone: (800) 888-9926  
Fax: 585-229-2363  
e-mail: [sceny@mcimail.com](mailto:sceny@mcimail.com)  
www: [stone-equip.com](http://stone-equip.com)

A 100% employee-owned American manufacturer

© 2002 Stone Construction Equipment, Inc.  
Printed in U.S.A.

GP1M