



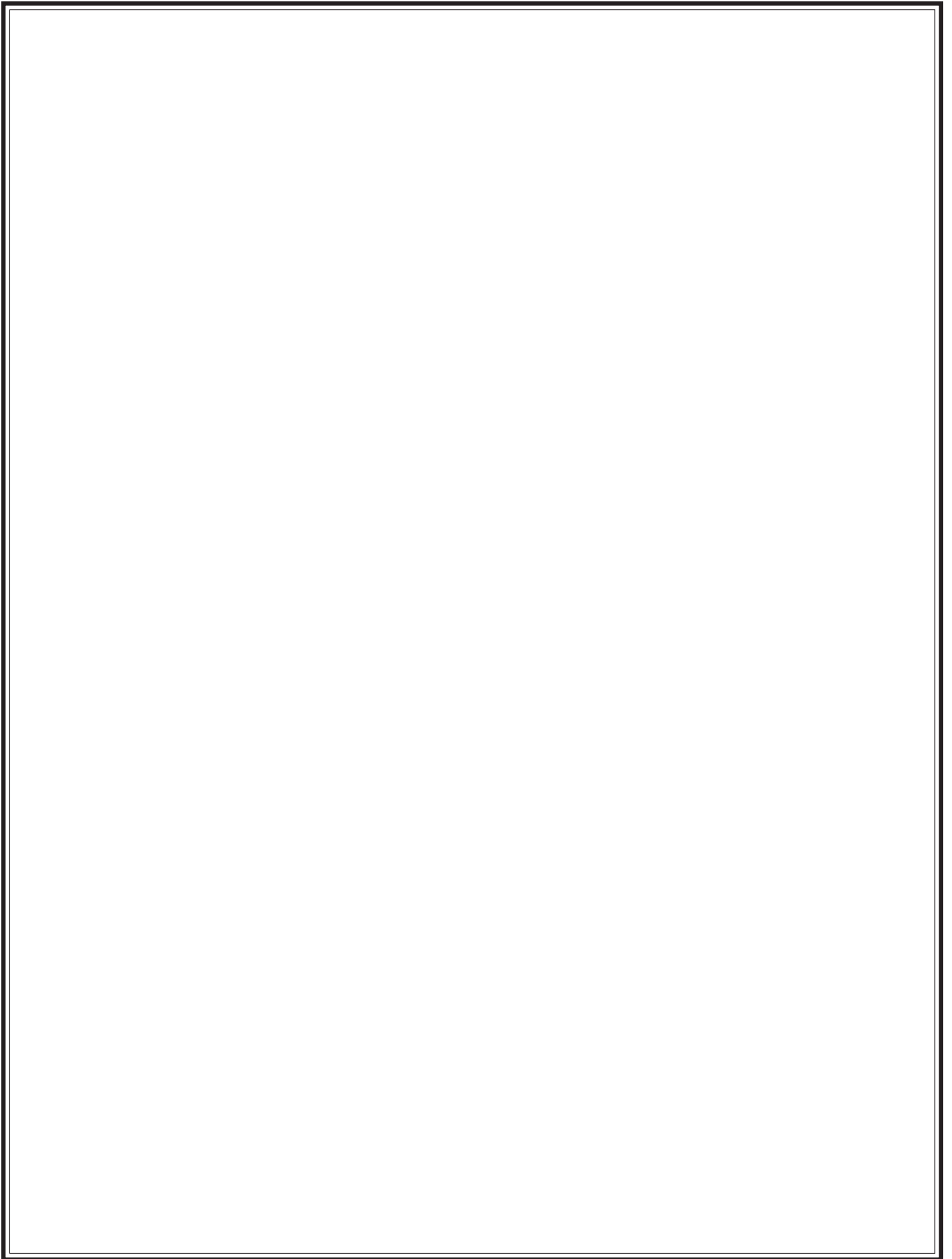
# SERVICE/PARTS MANUAL

## MODELS: 95CMP & 95CMPED



### CONCRETE MIXER

A 100% employee-owned American manufacturer



# Table of Contents

# 95CMP & 95CMPED

<b>FOREWORD .....</b>	<b>4</b>
<b>Limited WARRANTY .....</b>	<b>5</b>
<b>TECHNICAL DATA .....</b>	<b>6 - 8</b>
Specifications .....	6
Imperial Torque Chart .....	7
Metric Torque Chart .....	8
<b>HEALTH &amp; SAFETY .....</b>	<b>9 - 13</b>
<b>MAINTENANCE .....</b>	<b>14 - 15</b>
Maintenance & Lubrication .....	14
Cleaning .....	14
Towing .....	14
Maintenance Schedule .....	15
<b>HARDWARE IDENTIFICATION .....</b>	<b>16</b>
<b>EXPLODED DIAGRAM AND PARTS LIST .....</b>	<b>18 - 41</b>
95CMP Frame & Drum Assembly .....	18 - 21
95CMPED Frame & Drum Assembly .....	22 - 25
Tilt Mechanism .....	26 - 27
95CMP & 95CMPED Gas/Diesel Drive .....	28 - 31
Grounding Switch .....	32 - 33
95CMP & 95CMPED Electric Drive .....	34 - 35
Electric Wiring .....	36 - 37
Trailer Lights Ooption .....	38 - 39
Spring Axle Assembly .....	40 - 41
Decal Identification .....	42 - 43
<b>CALIFORNIA PROPOSITION 65 WARNING .....</b>	<b>IBC</b>

# User Information

# Forward

These instructions include:

- Safety regulations
- Operating instructions
- Maintenance instructions

**These instructions have been prepared for operation on the construction site and for the maintenance engineer.**

These instructions are intended to simplify operation of the machine and to avoid malfunctions through improper operation.

Observing the maintenance instructions will increase the reliability and service life of the machine when used on the construction site and reduce repair costs and downtimes.

**Always keep these instructions at the place of use of the machine.**

**Only operate the machine as instructed and follow these instructions.**

**Observe the safety regulations as well as the guidelines of the civil engineering trade association. Observe the safety rules for operation and the pertinent regulations for the prevention of accidents.**

Stone Construction Equipment, Inc. is not liable for the function of the machine when used in an improper manner or for other than the intended purpose.

Operating errors, improper maintenance and the use of incorrect operating materials are not covered by the warranty.

The above information does not extend the warranty and liability conditions of business of Stone Construction Equipment, Inc.

1. Machine Type: \_\_\_\_\_

Machine S/N: \_\_\_\_\_

2. Engine Type: \_\_\_\_\_

Engine S/N: \_\_\_\_\_

3. VIN: \_\_\_\_\_

4. Purchase Date: \_\_\_\_\_

5. Dealer/Distributor Information:

Name: \_\_\_\_\_

Address: \_\_\_\_\_

Phone #: \_\_\_\_\_

Fax #: \_\_\_\_\_

6. Battery  
Manufacturer: \_\_\_\_\_

Battery Type: \_\_\_\_\_

Battery S/N: \_\_\_\_\_

*Location of above information:*

1. Information on S/N tag.
2. Information on engine tag.
3. Information on S/N tag - if applicable.
4. Date you purchased machine.
5. Dealer machine was purchased from.
6. Information on battery and battery warranty card.

Stone Construction Equipment, Inc.  
P.O. Box 150, Honeoye, New York 14471  
Phone: (800) 888-9926  
Fax: (585) 229-2363

# L i m i t e d   W a r r a n t y

The Manufacturer warrants that products manufactured shall be free from defects in material and workmanship that develop under normal use for a period of 90 days for concrete vibrators and electric pumps, one year for Rhino®, Bulldog®, WolfPac Rollers™, trowels, Stompers®, saws, forward plates, engine powered pumps, Lift Jockey™, Mortar Buggy™ and 6 months for all other products from the date of shipment. The foregoing shall be the exclusive remedy of the buyer and the exclusive liability of the Manufacturer. Our warranty excludes normal replaceable wear items, i.e. gaskets, wear plates, seals, O-rings, V-belts, drive chains, clutches, etc. Any equipment, part or product which is furnished by the Manufacturer but manufactured by another, bears only the warranty given by such other manufacturer. (The Manufacturer extends the warranty period to "Lifetime" for the drum bearings and seals for the mortar mixers, and agrees to furnish, free of charge, the bearings and seals only upon receipt of the defective parts. The warranty is two years for eccentric bearings on the forward plate compactors, mortar and plaster mixer drums, trowel gearboxes and five years on the Bulldog trench roller eccentric bearings.) A Warranty Evaluation Form must accompany all defective parts. Warranty is voided by product abuse, alterations, and use of equipment in applications for which it was not intended, use of non-manufacturer parts, or failure to follow documented service instructions. The foregoing warranty is exclusive of all other warranties whether written or oral, expressed or implied. No warranty of merchantability or fitness for a particular purpose shall apply. The agents, dealer and employees of Manufacturer are not authorized to make modification to this warranty, or additional warranties binding on Manufacturer. Therefore, additional statements, whether oral or written, do not constitute warranty and should not be relied upon.

The Manufacturer's sole responsibility for any breach of the foregoing provision of this contract, with respect to any product or part not conforming to the Warranty or the description herein contained, is at its option (a) to repair, replace or refund such product or parts upon the prepaid return thereof to location designated specifically by the Manufacturer. Product returns not shipped prepaid or on an economical transportation basis will be refused (b) as an alternative to the foregoing modes of settlement - the Manufacturer's dealer to repair defective units with reimbursement for expenses, except labor, and be reviewed with the Manufacturer prior to repair. A Warranty Evaluation Form must accompany all warranty claims.

Except as set forth hereinabove and without limitation of the above, there are no warranties or other affirmations which extends beyond the description of the products and the fact hereof, or as to operational efficiency, product reliability or maintainability or compatibility with products furnished by others. In no event whether as a result of breach of contract or warranty or alleged negligence, shall the Manufacturer be liable for special or consequential damages including but not limited to: Loss of profits or revenues, loss of use of the product or any associated product, cost of capital, cost of substitute products, facilities or services or claims of customers.

No claim will be allowed for products lost or damaged in transit. Such claims should be filed with the carrier within fifteen days.

Effective July 2002.

# TECHNICAL DATA

# Specifications

## Stone 95CMP & 95CMPED Mixer – Specifications

	95CMP	95CMPED
<u>Dimensions</u>		
Operating Wt.	837 lbs. (w/ 8 hp Honda) 380 kg	875 lbs. (w/ 8 hp Honda) 396.9 kg
Batch Capacity (Bags)	1 - 1 1/2 bags	1 - 1 1/2 bags
Batch Capacity (cu. ft.)	9 cu. ft. / .255 cu. m.	9 cu. ft. / .255 cu. m.
Total Volume	15.1 cu. ft. / .43 cu. m.	15.1 cu. ft. / .43 cu. m.
L x W x H	84 x 56 x 65 (in) 213.4 x 142.2 x 165.1 (cm)	85 x 85 x 71 (in) 215.9 x 215.9 x 180.3 (cm)
Power Source	1 1/2 hp / 1.1 kW Electric 6 hp / 4.5 kW Diesel 8.5 hp / 6.3 kW Robin 8 hp / 6 kW B&S Kool Bore 8 hp / 5.9 kW B&S I/P 8 hp / 6 kW Honda 10 hp / 7.5 kW B&S I/P	1 1/2 hp / 1.1 kW Electric 6 hp / 4.5 kW Yanmar Diesel 8.5 hp / 6.3 kW Robin 8 hp / 6 kW B&S Kool Bore 8 hp / 5.9 kW B&S I/P 8 hp / 6 kW Honda 10 hp / 7.5 kW B&S I/P

# TECHNICAL DATA

## Imperial Torque Chart

SAE GRADE 5 Coarse Thread, Zinc-Plated		
SIZE	TORQUE	
	ft. lbs.	Nm
1/4 - 20 (.250)	6	8
5/16 - 18 (.3125)	13	18
3/8 - 16 (.375)	23	31
7/16 - 14 (.4375)	37	50
1/2 - 13 (.500)	57	77
9/16 - 12 (.5625)	82	111
5/8 - 11 (.625)	112	152
3/4 - 10 (.750)	200	271
7/8 - 9 (.875)	322	436.5
1 - 8 (1.000)	483	655

SAE GRADE 8 Coarse Thread, Zinc-Plated		
SIZE	TORQUE	
	ft. lbs.	Nm
1/4 - 20 (.250)	9	12
5/16 - 18 (.3125)	18	24
3/8 - 16 (.375)	33	45
7/16 - 14 (.4375)	52	70
1/2 - 13 (.500)	80	108
9/16 - 12 (.5625)	115	156
5/8 - 11 (.625)	159	215
3/4 - 10 (.750)	282	382
7/8 - 9 (.875)	454	615
1 - 8 (1.000)	682	925

SAE GRADE 5 Fine Thread, Zinc-Plated		
SIZE	TORQUE	
	ft. lbs.	Nm
1/4 - 28 (.250)	7	10
5/16 - 24 (.3125)	14	19
3/8 - 24 (.375)	26	35
7/16 - 20 (.4375)	41	56
1/2 - 20 (.500)	64	87
9/16 - 18 (.5625)	91	123
5/8 - 18 (.625)	128	173
3/4 - 16 (.750)	223	302
7/8 - 14 (.875)	355	481
1 - 12 (1.000)	529	717
1 - 14 (1.000)	541	733

SAE GRADE 8 Fine Thread, Zinc-Plated		
SIZE	TORQUE	
	ft. lbs.	Nm
1/4 - 28 (.250)	10	14
5/16 - 24 (.3125)	20	27
3/8 - 24 (.375)	37	50
7/16 - 20 (.4375)	58	79
1/2 - 20 (.500)	90	122
9/16 - 18 (.5625)	129	175
5/8 - 18 (.625)	180	244
3/4 - 16 (.750)	315	427
7/8 - 9 (.875)	501	679
1 - 12 (1.000)	746	1011
1 - 14 (1.000)	764	1036

t-chrt\_i.doc

# TECHNICAL DATA

## Metric Torque Chart

### Property Class 8.8

ZINC-PLATED

SIZE	Coarse Thread		Fine Thread	
	Nm	ft. lbs.	Nm	ft. lbs.
M6	9.9	7	NA	NA
M8	24	18	25	18
M10	48	35	49	36
M12	83	61	88	65
M14	132	97	140	103
M16	200	148	210	155
M20	390	288	425	313
M24	675	498	720	531

### Property Class 10.9

ZINC-PLATED

SIZE	Coarse Thread		Fine Thread	
	Nm	ft. lbs.	Nm	ft. lbs.
M6	14	10	NA	NA
M8	34	25	35	26
M10	67	49	68	50
M12	117	86	125	92
M14	185	136	192	142
M16	285	210	295	218
M20	550	406	600	443
M24	950	701	1000	738

### Property Class 12.9

ZINC-PLATED

SIZE	Coarse Thread		Fine Thread	
	Nm	ft. lbs.	Nm	ft. lbs.
M6	16.5	12	NA	NA
M8	40	30	42	31
M10	81	60	82	60
M12	140	103	150	111
M14	220	162	235	173
M16	340	251	350	258
M20	660	487	720	531
M24	1140	841	1200	885

Conversion Factor: 1 ft. lb. = 1.3558 Nm



# HEALTH & SAFETY

## Safety Precautions

Before using this equipment, study this entire manual to become familiar with its operation. Do not allow untrained or unauthorized personnel, especially children, to operate this equipment. Use only factory authorized parts for service.

When warning decals are destroyed or missing, contact the Manufacturer immediately at 1-800-888-9926 for replacement. For the safety of yourself and others, it is imperative that the following rules are observed. Failure to do so may result in serious injury or death.

### FOLLOW SAFETY INSTRUCTIONS

Carefully read all safety messages and decals in this manual and on your machine safety signs. Keep decals in good condition. Replace missing or damaged decals. Be sure new equipment components and repair parts include the current safety signs. Replacement safety signs and decals are available through your dealer.



Learn how to operate the machine and how to use controls properly. Do not let anyone operate without instruction.

Keep your machine in proper working condition. Unauthorized modifications to the machine may impair the function and/or safety and affect machine life.

If you do not understand any part of this manual and need assistance, contact your dealer.

---

**▲ DANGER**

**▲ WARNING**

**▲ CAUTION**

### UNDERSTAND SIGNAL WORDS

A signal word – DANGER, WARNING, or CAUTION – is used with the safety-alert symbol. DANGER identifies the most serious hazards.

DANGER or WARNING safety signs are located near specific hazards. General precautions are listed on CAUTION safety signs. CAUTION also calls attention to safety messages in this manual.



This notation appears before warnings in the text. It means that the step which follows must be carried out to avoid the possibility of personal injury or death. These warnings are intended to help the technician avoid any potential hazards encountered in the normal service procedures. We strongly recommend that the reader takes advantage of the information provided to prevent personal injury or injury to others.

# HEALTH & SAFETY

## Safety Precautions

### USE COMMON SENSE WHEN HANDLING FUELS



- Transport and handle fuel only when contained in approved safety container.
- Do not smoke when refueling or during any other fuel handling operation.
- Do not refuel while the engine is running or while it is still hot.
- If fuel is spilled during refueling, wipe it off from the engine immediately and discard the rag in a safe place.
- Do not operate the equipment if fuel or oil leaks exist - repair immediately.
- Never operate this equipment in an explosive atmosphere.



- Always use the proper size grounded extension cord, conforming to the National Electric Code and Local Ordinances.
- Inspect all extensions and electrical cords for cuts, frayed wire and broken connectors before use. Do not use cords if not in good condition.
- Do not route extension cords through standing water.
- Do not operate the mixer in standing water.
- When cleaning the mixer, never spray water on the electric motor.



### HOT SURFACES

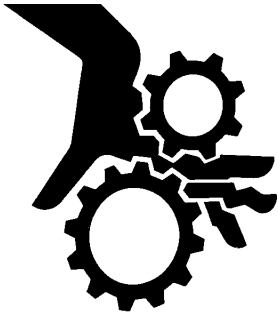
- Avoid contact with hot exhaust systems and engines.
- Allow all components in the engine compartment to cool before performing any service work.

## **WARNING**

- Never leave mixer unattended while running.
- Mix only concrete.

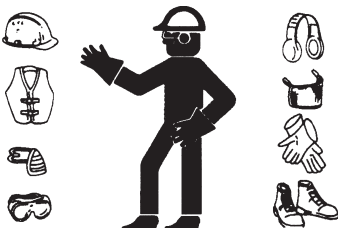
# HEALTH & SAFETY

## Safety Precautions

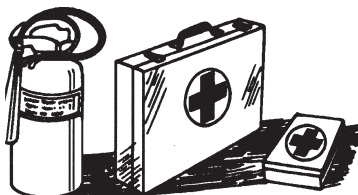


- Never perform any work on the mixer while it is running.
- Before working on the mixer, stop the engine and disconnect the spark plug wire(s) to prevent accidental starting. On electric models, disconnect the electric cord at the mixer.
- Keep cowl closed and latched during the operation, close and latch cowl immediately after starting.
- Keep hands, clothing and jewelry away from all moving parts.
- Keep all guards in place, including drum guards.
- Never place your hands or any solid object into the drum while the mixer is in operation.

### WEAR PROTECTIVE CLOTHING



- Wear close fitting clothing and safety equipment appropriate to the job.
- Prolonged exposure to loud noise can cause impairment or loss of hearing.
- Wear a suitable hearing protective device such as earmuffs or earplugs to protect against objectionable or uncomfortable loud noises.
- Operating equipment safely requires the full attention of the operator. Do not wear radio or music headphones while operating machine.



### PREPARE FOR EMERGENCIES

- Be prepared if a fire starts.
- Keep a first aid kit and fire extinguisher handy.
- Keep emergency numbers for doctors, ambulance service, hospital, and fire department near your telephone.

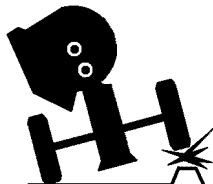
# HEALTH & SAFETY

## Safety Precautions



### Warning-Eye Protection

- Always wear splash goggles when operating mixer.



### Warning-Towing

- Warning: Do not tow the mixer with the drum in the dump position. Mixer may become unstable and tip over when hitting a curb, pothole, or other obstruction.



- Warning: Always properly attach safety chains before mixer is towed. Maximum towing speed 55 m.p.h. (90 km/hr). Reduce speed according to highway conditions.



**DANGER**



**BEFORE  
TOWING**

1. Check vehicle hitch, ball, and coupler for signs of wear or damage. Replace any parts that are worn or damaged before towing.
2. Use only the ball diameter indicated on your coupler. Use of any other ball diameter will create an extremely and dangerous condition which can result in separation of the coupler and ball or ball failure.
3. Be sure the coupler is secured to the hitch ball and the lock lever is down tight and locked. Assure that the ball clamp is properly nested under the ball and not sitting on top of the ball. Recheck tightness again after towing about 50 miles.
4. Check that trailer safety chains are properly connected.
5. Check that all trailer lighting is hooked up and working correctly.



- Never operate unit in a poorly ventilated or enclosed area.
- Avoid prolonged breathing of exhaust gases.
- Engine exhaust fumes can cause sickness or death.

# HEALTH & SAFETY

## Safety Precautions

### PRACTICE SAFE MAINTENANCE

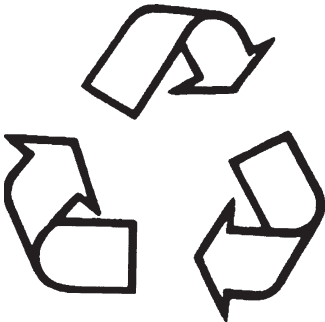


- Understand service procedure before doing work. Keep area clean and dry.
- Never lubricate, service or adjust machine while it is moving. Keep hands, feet, and clothing from power-driven parts. Disengage all power and operate controls to relieve pressure. Lower equipment to the ground. Stop the engine. Remove the key. Allow machine to cool.
- Securely support any machine elements that must be raised for service work.
- Keep all parts in good condition and properly installed. Repair damage immediately. Replace worn or broken parts. Remove any buildup of grease, oil, or debris.
- Disconnect battery ground cable (-) before making adjustments on electrical systems or welding on machine.



- Starting fluid (ether) is highly flammable, do not use or an explosion or fire may result.

### DISPOSE OF WASTE PROPERLY



- Improperly disposing of waste can threaten the environment and ecology. Potentially harmful waste used with equipment include such items as oil, fuel, coolant, brake fluid, filters, and batteries.
- Use leakproof containers when draining fluids. Do not use food or beverage containers that may mislead someone into drinking from them.
- Do not pour waste onto the ground, down a drain, or into any water source.
- Air conditioning refrigerants escaping into the air can damage the Earth's atmosphere. Government regulations may require a certified air conditioning service center to recover and recycle used air conditioning refrigerants.
- Inquire on the proper way to recycle or dispose of waste from your local environmental or recycling center.

### SAFETY DECALS - FOR THE SAFETY OF YOURSELF AND OTHERS REPLACE ANY DAMAGED OR MISSING SAFETY DECALS.

- Warning Decal (SN-92) P/N 55011
- Safety Instruction Decal (SN-67A) P/N 55046
- Warning Decal (SN-8) P/N 55127
- Safety Chain Decal (Front Post, SN-66) P/N 55121

# MAINTENANCE

## Maintenance and Lubrication/ Drum, Spindle, Bearing Re- placement/Cleaning/Towing

### MAINTENANCE AND LUBRICATION

To get long and trouble-free service from this mixer, it is essential that you perform periodic maintenance on the engine and machine mechanisms. Follow the guide lines listed below:

### REPLACEMENT OF DRUM, SPINDLE & BEARINGS

The Pipe Plug (Item 1) is sealed in the bearing house with loctite 262. It may be necessary to apply heat to the housing for removal. Apply loctite 262 upon reassembly to ensure proper locking and sealing.

Note that all adjustments must be made with drum in the vertical (drum-up) position. Impact drivers may not be used as they will return incorrect torque readings.

65/75/95/105CM--Loosen side bolt and retighten finger-tight. Torque spindle bolt to 40 ft. lbs. Loosen spindle bolt one (1) turn and re-torque to 25 ft. lbs. Loosen side bolt one (1) turn and re-torque to 30 ft. lbs.

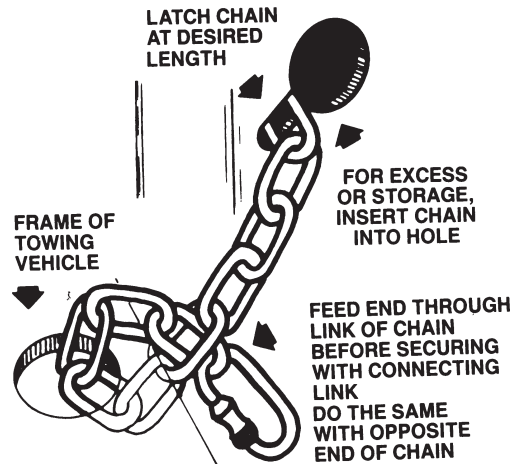
### HARDWARE

Periodically inspect all hardware on the mixer and engine / motor. Loose hardware can contribute to early component failure and poor performance.

### TOWING

Before attempting to tow this mixer, check the state and local laws that apply to your intended route and check the following:

1. Hitch attached to the towing vehicle securely.
2. Towpole fully extended and bolted to mixer securely.
3. Safety chain hooked up properly (see illustration below or decal on mixer front post).
4. Lug nuts, wheel nuts and axle mount nuts tight.



5. Main axle springs and small snubber springs and bolts not broken or cracked.
6. Tires in good shape and at proper inflation as follows:  
Tire size B78 x 13 @ 35 P.S.I.

Refer to FRAME AND DRUM ASSEMBLY and AXLE ASSEMBLY sections of this manual for parts identification and location.

## WARNING

**DO NOT EXCEED A TOWING SPEED OF 55 MILES/HR (90 KM/HR). FOR POOR ROAD CONDITIONS OR INCLEMENT WEATHER, REDUCE SPEED ACCORDINGLY.**

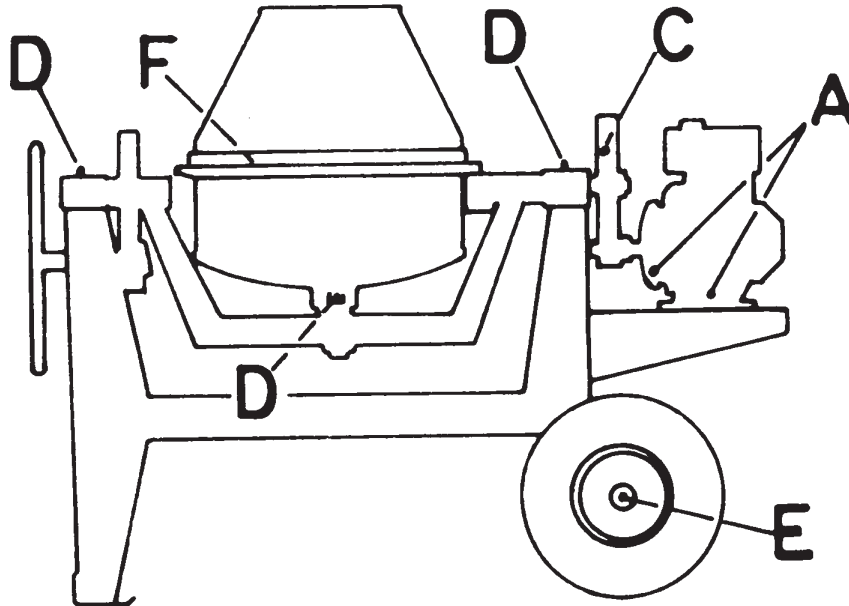


**Recommended Coupler Maintenance  
Read Entire Owners Manual**

1. Smear ball socket and clamp face with chassis grease. Periodically, oil pivot points and sliding surfaces of coupler with SAE 30 wt. motor oil.
2. When parking or storing your trailer, keep the coupler off the ground so dirt will not build up in the ball socket.
3. Replacement instructions:
  - Use (2) 1/2 inch grade 5 through bolts and locknuts, torque to 57 ft. lbs.

# MAINTENANCE

## Schedule



**NOTE:** Cowl removed for clarity. Do not operate mixer with cowl removed.

**A. ENGINE** - Daily check the oil levels in the engine and engine reduction unit. The engine warranty is **void** if run without oil. Since there are many options available on this mixer, consult the ENGINE MANUAL for specific recommendations as to oil level, oil type required and frequency of oil changes required. For maximum service life from the engine, follow those recommendations.

**B. \* WEEKLY** - Grease idler shaft pillow block bearings on electric drive models.

**\*WEEKLY** - Check diesel gearbox oil level. Oil level should be visible at pipe plug. Lubricate diesel gearbox with SAE30W to SAE80W oil as needed.

**C. WEEKLY** - Lubricate chain and sprockets on chain drive models with a few drips of SAE 30 motor oil or any spray chain lube.

**D. MONTHLY** - Grease trunnions (2) places and drum spindle (2) places.

**E. YEARLY** - Repack (4) tapered roller bearings in wheel hubs and replace wheel seals. Install washer and nut. Torque to 20 ft. lbs. back off one turn, torque to 7 ft. lbs. back off to first slot in nut and insert cotter key.

**F. DO NOT** lubricate pinion and ring gear. They will collect abrasive materials and accelerate wear.

Lubricate diesel gearbox with SAE30W oil as needed.

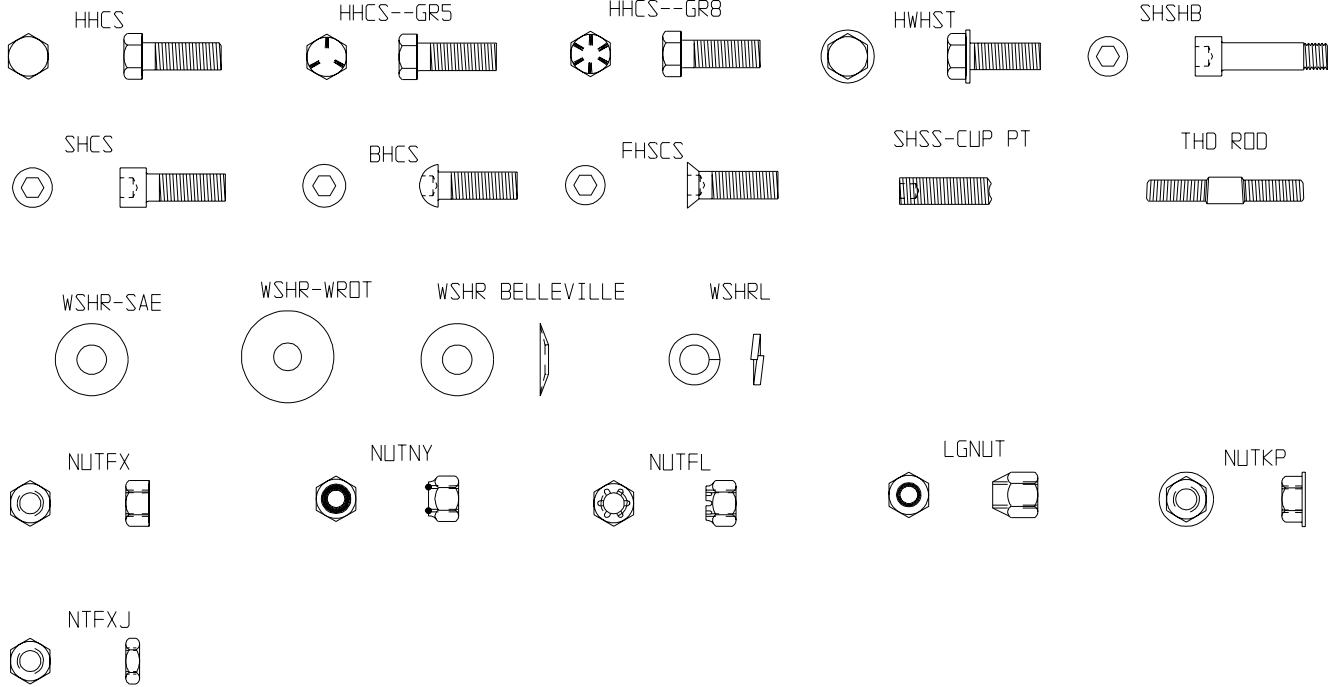
Use any Grade #1 lithium base grease for the above applications.

\* See Exploded Views with Parts Section of this manual for exact location.

\* Gearbox gasket kit P/N 23197.

# MAINTENANCE

# Hardware Identification





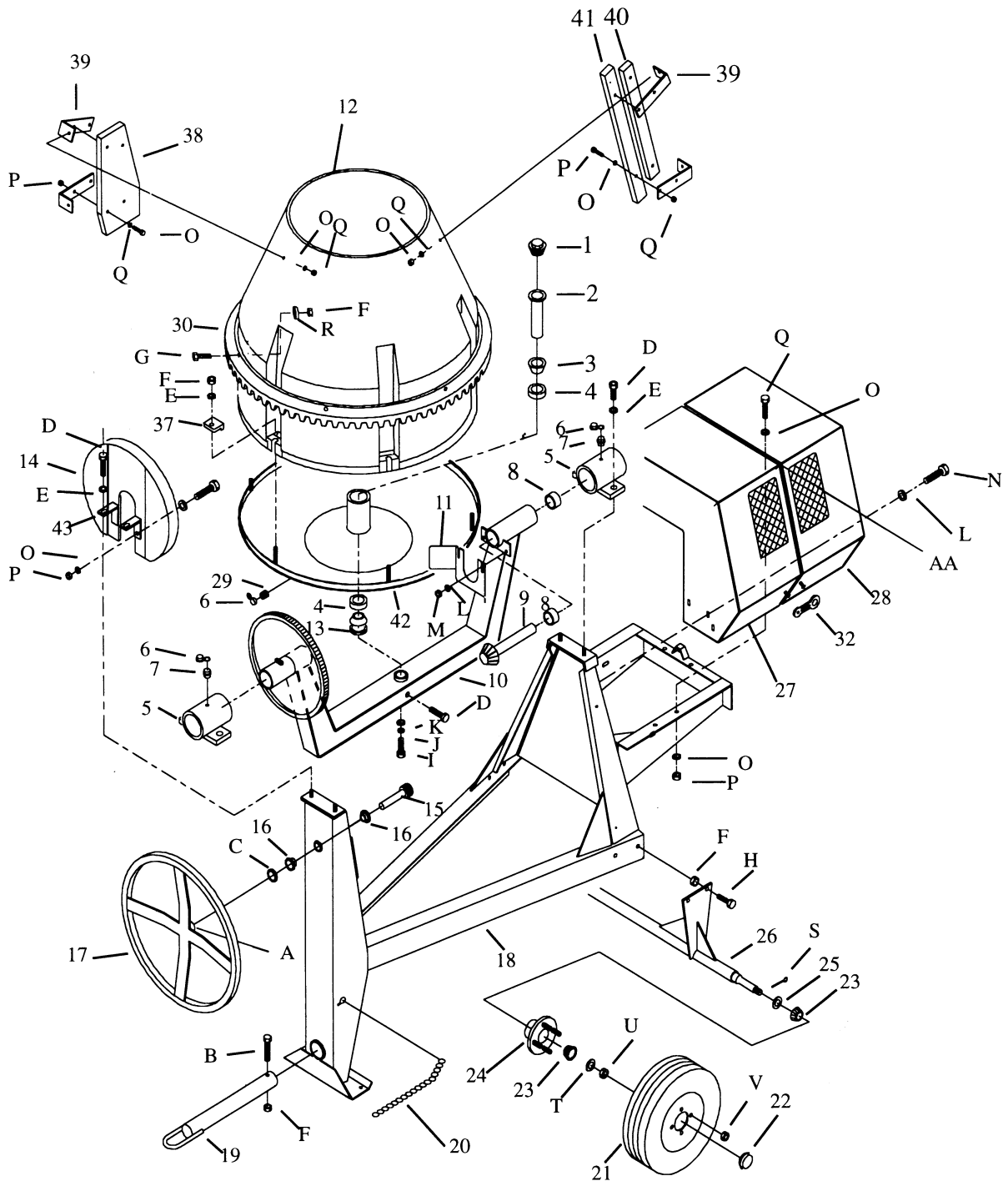
# PARTS LIST

## Exploded Views with Parts

95CMP Frame & Drum Assembly .....	18 - 21
95CMPED Frame & Drum Assembly .....	22 - 25
Tilt Mechanism .....	26 - 27
95CMP & 95CMPED Gas/Diesel Drive .....	28 - 31
Grounding Switch .....	32 - 33
95CMP & 95CMPED Electric Drive .....	34 - 35
Electric Wiring .....	36 - 37
Trailer Lights Option .....	38 - 39
Spring Axle Assembly .....	40 - 41
Decal Identification .....	42 - 43

# PARTS LIST

## 95CMP Frame and Drum Assembly



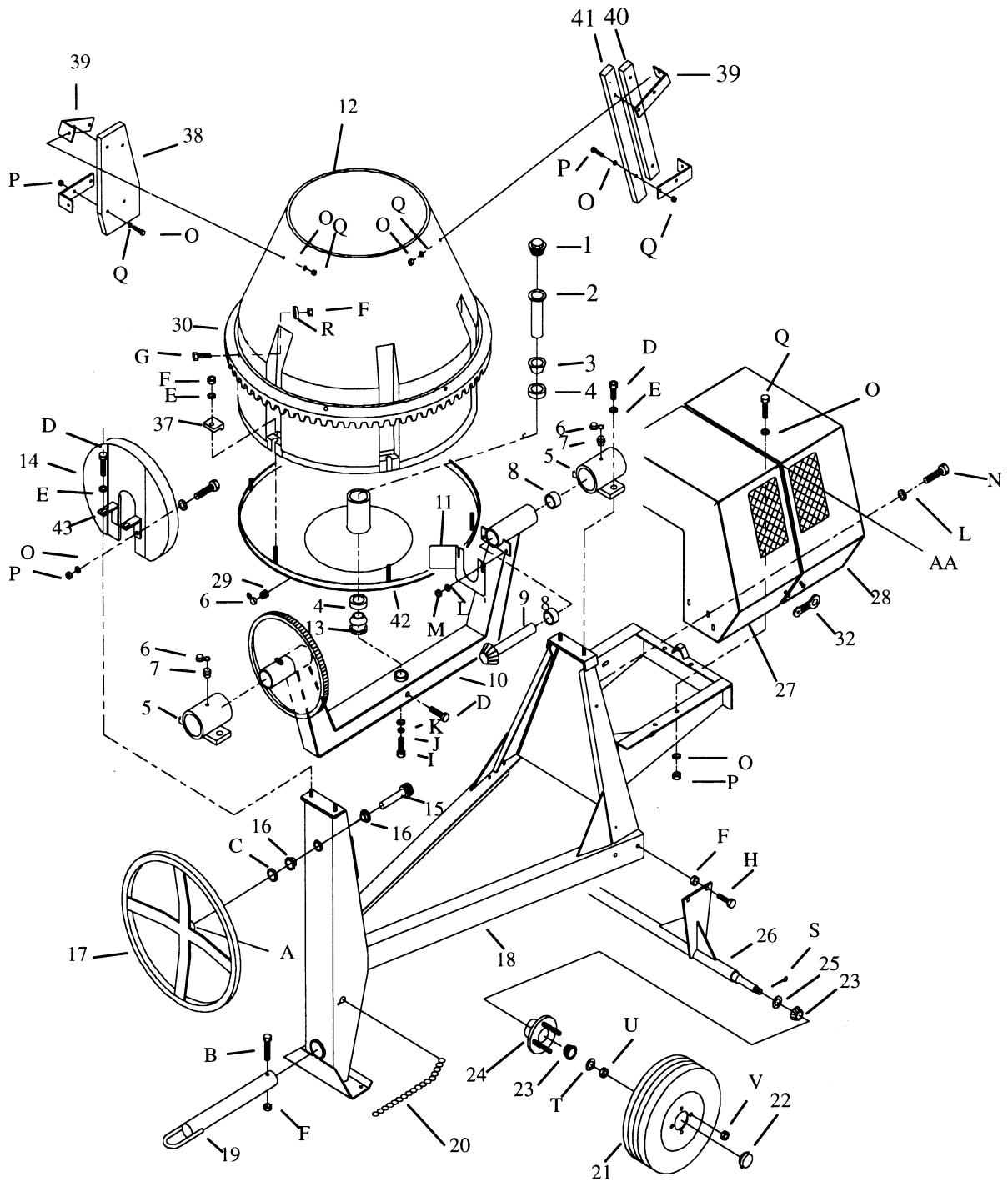
# PARTS LIST

## 95CMP Frame and Drum Assembly

ITEM	PART NO.	DESCRIPTION	QTY.
1	46022	Pipe Plug	1
2	27267	Spindle Assembly	1
3	32086	Bearing	1
4	32160	Race	2
5	24349-SLV	Trunnion	2
6	47001	Caplug Blue	3
7	46042	Grease Fitting	2
8	32039	Bearing	2
9	21487	Shaft Drive Assembly	1
10	21840-SLV	Yoke	1
11	27144-SLV	Pinion Guard	1
12	42820	Assembly Drum & Gear	1
13	32161	Bearing w/Seal	1
14	27617	Guard Brake Upper	1
15	22029	Shaft Tilt (lubricate with low viscosity oil at assembly)	1
16	32032	Bushing Nylon	2
17	22096-SLV	Handwheel	1
18	22026-SLV	Frame	1
19	26096-2	Tow Pole	1
20	21655	Kit Safety Chain	1
21	34134	Tire and Rim	2
22	34573	Dust Cap	2
23	32051	Bearing Cone	4
24	34501	Hub	2
25	32052	Seal Wheel Hub	2
26	21460-SLV	Axle	1
27	44406-2	Cowl Stationary	1
28	44383-2	Cowl Moveable	1
29	46057	Fitting C9-616	1
30	26317-SLV	Ring Gear (included in item 12--can be sold separately.)	1
32	47182	Latch Rubber	3
37	42781-2	Clamp Drum	6
38	47340	Paddle Large	2
39	42810-2	Bracket Paddle	8
40	47341	Paddle 22 Inch	2

# PARTS LIST

## 95CMP Frame and Drum Assembly



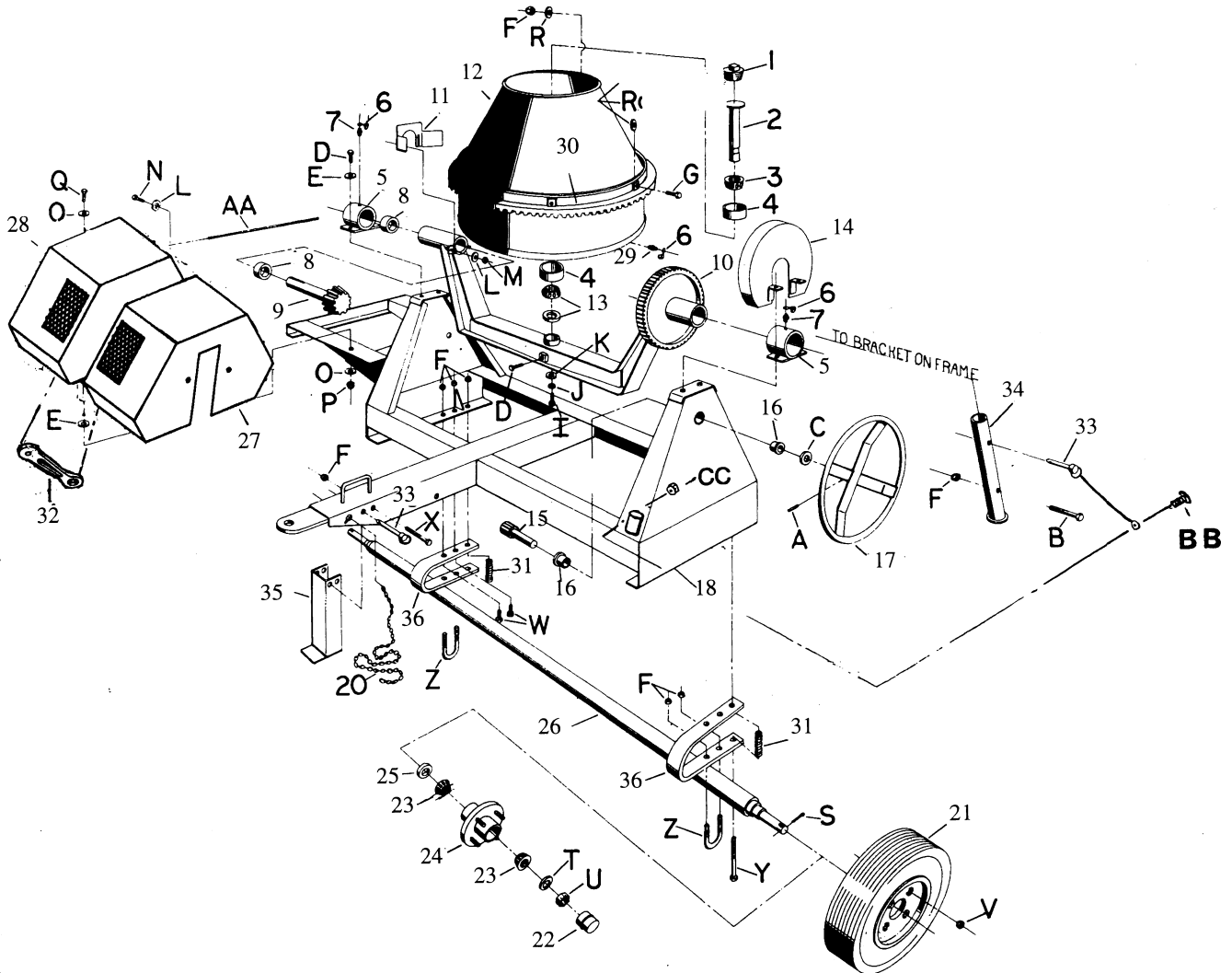
# PARTS LIST

## 95CMP Frame and Drum Assembly

ITEM	PART NO.	DESCRIPTION	QTY.
41	47342	Paddle 26 Inch	1
42	42780-2	Dish Weld	1
43	42811-2	Brkt Mtg Guard	2
44^	22199-2	Tow Pole Ball Hitch (optional tow poles not shown.)	1
45^	27549-2	Tole Pole Pin Hitch (optional tow poles not shown.)	1
46^	22069	Axle Assembly (axle/hub assembly includes Items 22, 23, 24, 25, 26, S, T, and U)	1
47^	23228	Kit Cowl Full (includes Items 27, 28, 32, AA, and decals.)	1
48^	23221	Kit Cowl Moveable ( includes Items 28, 32, and decals.)	1
A	80077	PINSP 5/16 x 2	1
B	80197	HHCS 1/2 - 13 x 4	1
C	24622	WSHR 1-1/32 ID x 1-1/2 OD x 1/8	1
D	80031	HWHST 1/2 - 13 x 1-1/2	5
E	80118	WSHR 1/2 WROT ZN	12
F	80051	NUTNY 1/2 - 13	11
G	80732	HHCS 1/2 - 13 x 2	6
H	80104	HHCS 1/2 - 13 x 1-1/4	4
I	80204	HHCS 5/8 - 11 x 1-1/2	1
J	80337	WSHRL 5/8	1
K	27413	WSHR 11/16 x 1-3/4 x 1/4	1
L	80348	WSHR 5/16	4
M	80114	NUTNY 5/16 - 18	2
N	80085	HWHST 5/16 - 18 x 1	2
O	80342	WSHR 3/8 SAE	8
P	80056	NUTNY 3/8 - 16	2
Q	80145	HHCS 3/8 - 16 x 1-1/4	4
R	26326	WSHR 9/16 x 1-3/4 x 1/4	6
S	80316	PINCT 1/8 x 1-1/2	2
T	80054	WSHR 3/4	2
U	80344	NUTFX 3/4 - 16	2
V	80045	LG NUT 1/2 - 20	8
AA	44368	PIN HINGE	1

# PARTS LIST

## 95CMPED Frame and Drum Assembly



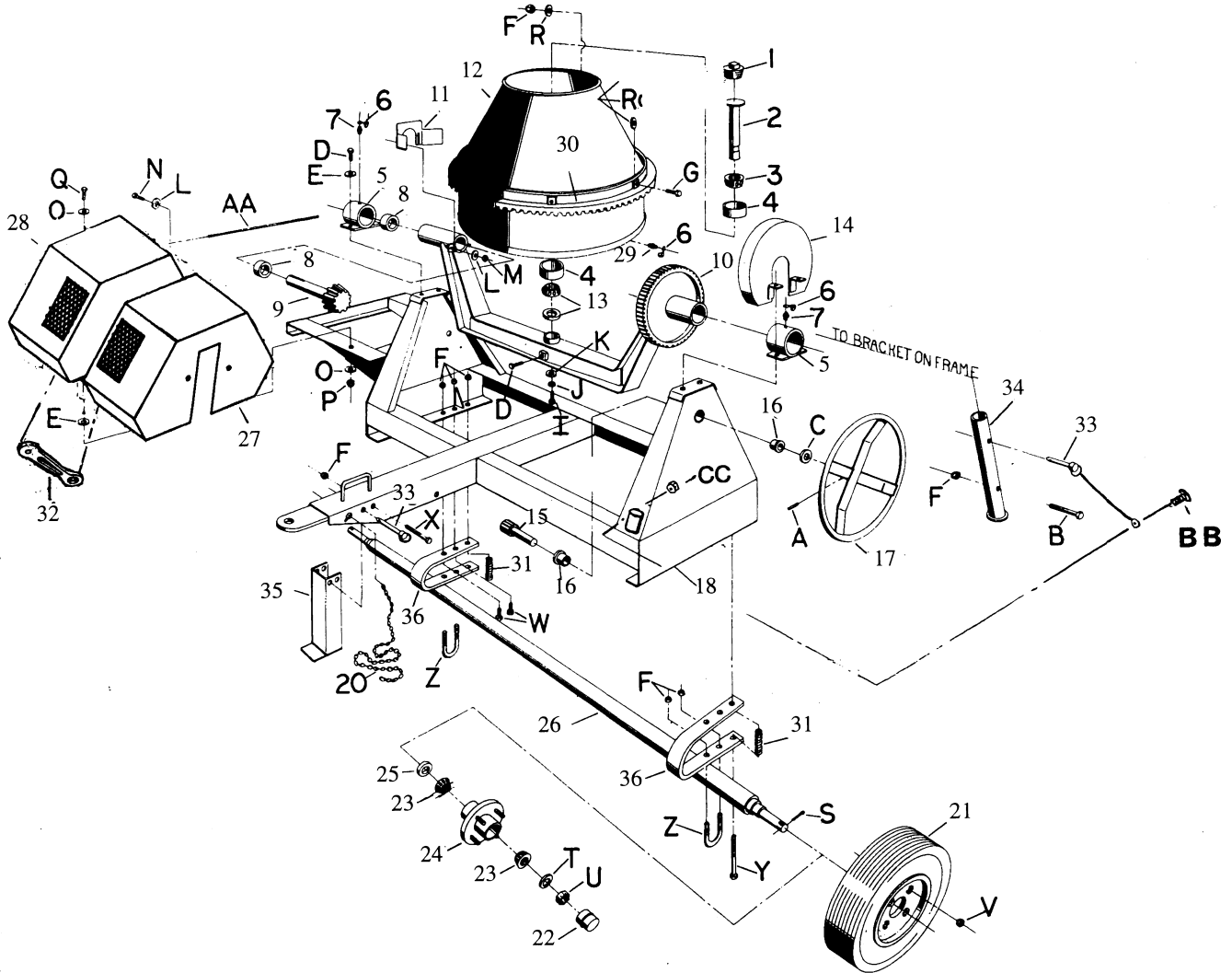
# PARTS LIST

## 95CMPED Frame and Drum Assembly

ITEM	PART NO.	DESCRIPTION	QTY.
1	46022	Pipe Plug	1
2	27267	Spindle Assembly	1
3	32086	Bearing	1
4	32160	Race	2
5	24349-SLV	Trunnion	2
6	47001	Caplug Blue	3
7	46042	Grease Fitting	2
8	32039	Bearing	2
9	21487	Shaft Drive Assembly	1
10	21840-SLV	Yoke	1
11	27144-2	Pinion Guard	1
12	42820	Assembly Drum & Gear	1
13	32161	Bearing w/Seal	1
14	27617-SLV	Guard Brake Upper	1
15**	22029	Shaft Tilt (lubricate with low viscosity oil at assembly)	1
16	32032	Bushing Nylon	2
17	22096-SLV	Handwheel	1
18	22046-SLV	Frame	1
20	21655	Kit Safety Chain	1
21	34134	Tire and Rim	2
22	34573	Dust Cap	2
23	32051	Bearing Cone	4
24	34501	Hub	2
25	32052	Seal Wheel Hub	2
26	21873-SLV	Axle	1
27	44406-2	Cowl Stationary	1
28	44383-2	Cowl Moveable	1
29	46057	Fitting C9-616	1
30*	26317-SLV	Ring Gear (included in Item 12--can be sold separately.)	1
31	34972	Coil Spring	2
32	47182	Latch Rubber	3
33	80039	Clevis Pin & Lanyard	2
34	21874-2	Stab Leg	2
35	21875-2	Front Post	1
36	26971-2	Spring	2
37	42781-2	Clamp	6
38	47340	Paddle Large	2

# PARTS LIST

## 95CMPED Frame and Drum Assembly





# PARTS LIST

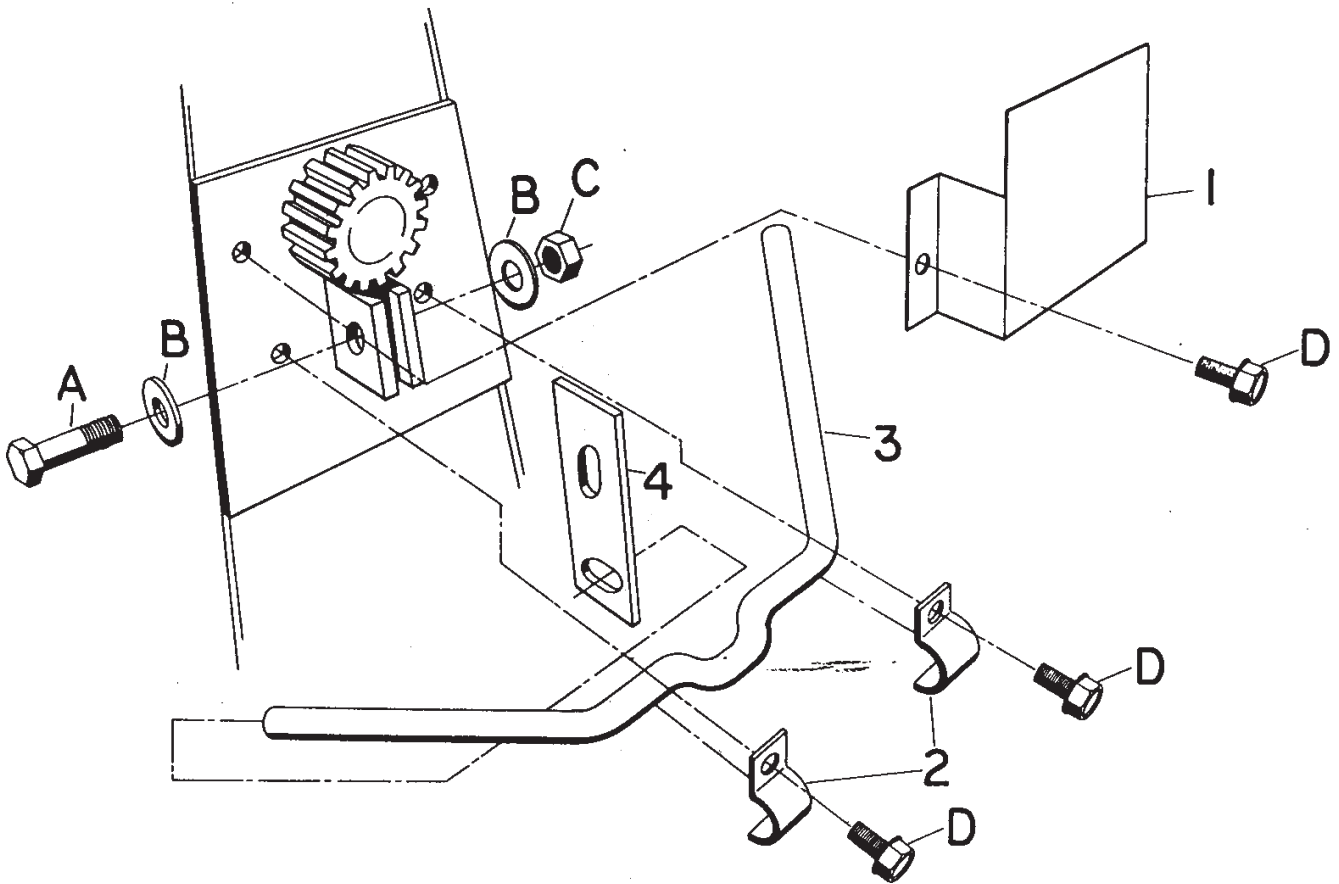
## 95CMPED Frame and Drum Assembly

ITEM	PART NO.	DESCRIPTION	QTY.
39	42810-2	Bracket Paddle	8
40	47341	Paddle 22 Inch	2
41	47342	Paddle 26 Inch	1
42	42780-2	Dish	1
43	42811-2	Brkt Mtg Guard	2
44^	22052	Axle Assembly (axle/hub assembly includes Items 22, 23, 24, 25, 26, S, T, and U)	1
45^	23228	Kit Cowl Full (includes Items 27, 28, 32, AA, and decals)	1
46^	23221	Kit Cowl Moveable (includes Items 28, 32, and decals)	1
A	80077	PINSP 5/16 x 2	1
B	80197	HHCS 1/2 - 13 x 4	2
C	24622	WSHR 1-1/32 ID x 1-1/2 OD x 1/8	1
D	80031	HWHST1/2 - 13 x 1-1/2	5
E	80118	WSHR 1/2 WROT ZN	10
F	80051	NUTNY 1/2 - 13	19
G	80732	HHCS 1/2 - 13 x 2	6
I	80204	HHCS 5/8 - 11 x 1-1/2	1
J	80337	WSHRL 5/8	1
K	27413	WSHR 11/16 x 1-3/4 x 1/4	1
L	80348	WSHR 5/16	4
M	80114	NUTNY 5/16 - 18	2
N	80085	HWHST 5/16 - 18 x 1	2
O	80342	WSHR 3/8 SAE	8
P	80056	NUTNY 3/8 - 16	2
Q	80145	HHCS 3/8 - 16 x 1-1/4	4
R	26326	WSHR 9/16 x 1-3/4 x 1/4	6
S	80316	PINCT 1/8 x 1-1/2	2
T	80054	WSHR 3/4	2
U	80344	NUTFX 3/4 - 16	2
V	80045	LG NUT 1/2 - 20	8
W	80075	HHCS 1/2 x 1-1/2 ZN	4
X	80106	HHCS 1/2 - 13 x 5 ZN	1
Y	80052	HHCS 1/2 - 13 x 6-1/2 ZN	2
Z	26195	U-BOLT	2
AA	44368	PIN HINGE	1
BB	80527	PPHMS 10 - 24 x 5/8 ZN	3
CC	80693	NUTNY 10 - 24 ZN	3

Note: ^ not shown

# PARTS LIST

## Tilt Mechanism



# PARTS LIST

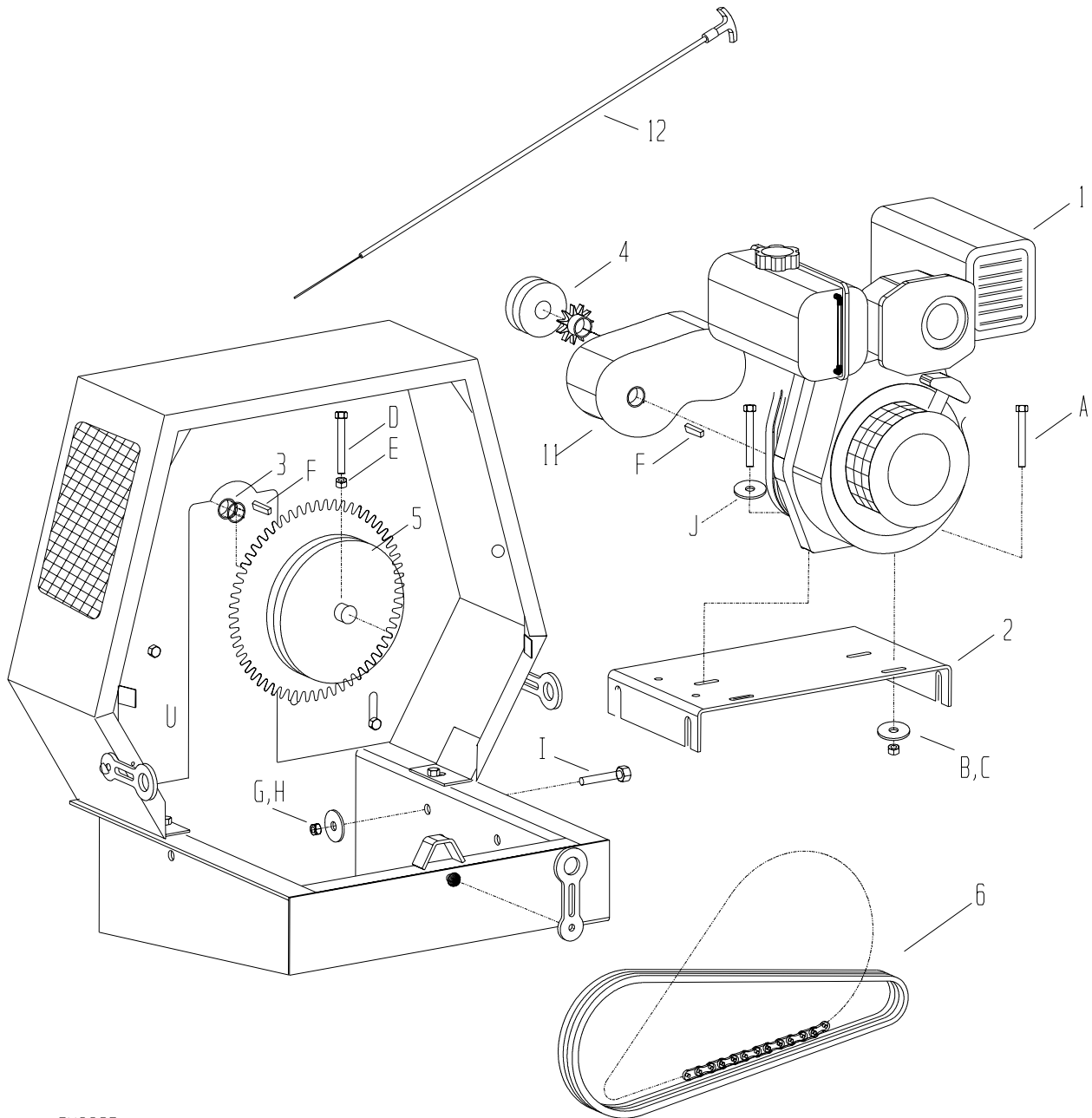
## Tilt Mechanism

ITEM	PART NO.	DESCRIPTION	QTY.
1	27618-SLV	Guard Brake - Lower	1
2	27559-SLV	Brkt Clutch Handle	2
3	27621-SLV	Brake Handle	1
4	27619-2	Dog, Brake	1
A	80145	HHCS 3/8 - 16 x 1-1/4 ZN	1
B	80342	WSHR 3/8 SAE ZN	2
C	80056	NUTNY 3/8 - 16 ZN	1
D	80085	HWHST 5/16 - 18 x 1 ZN	4

**NOTE:** When servicing tilt mechanism, bolt A should be tightened so approximately 17 - 18 pounds of force is required to disengage the tilt dog.

# PARTS LIST

## Gas/Diesel Belt Drive Components



CM002B

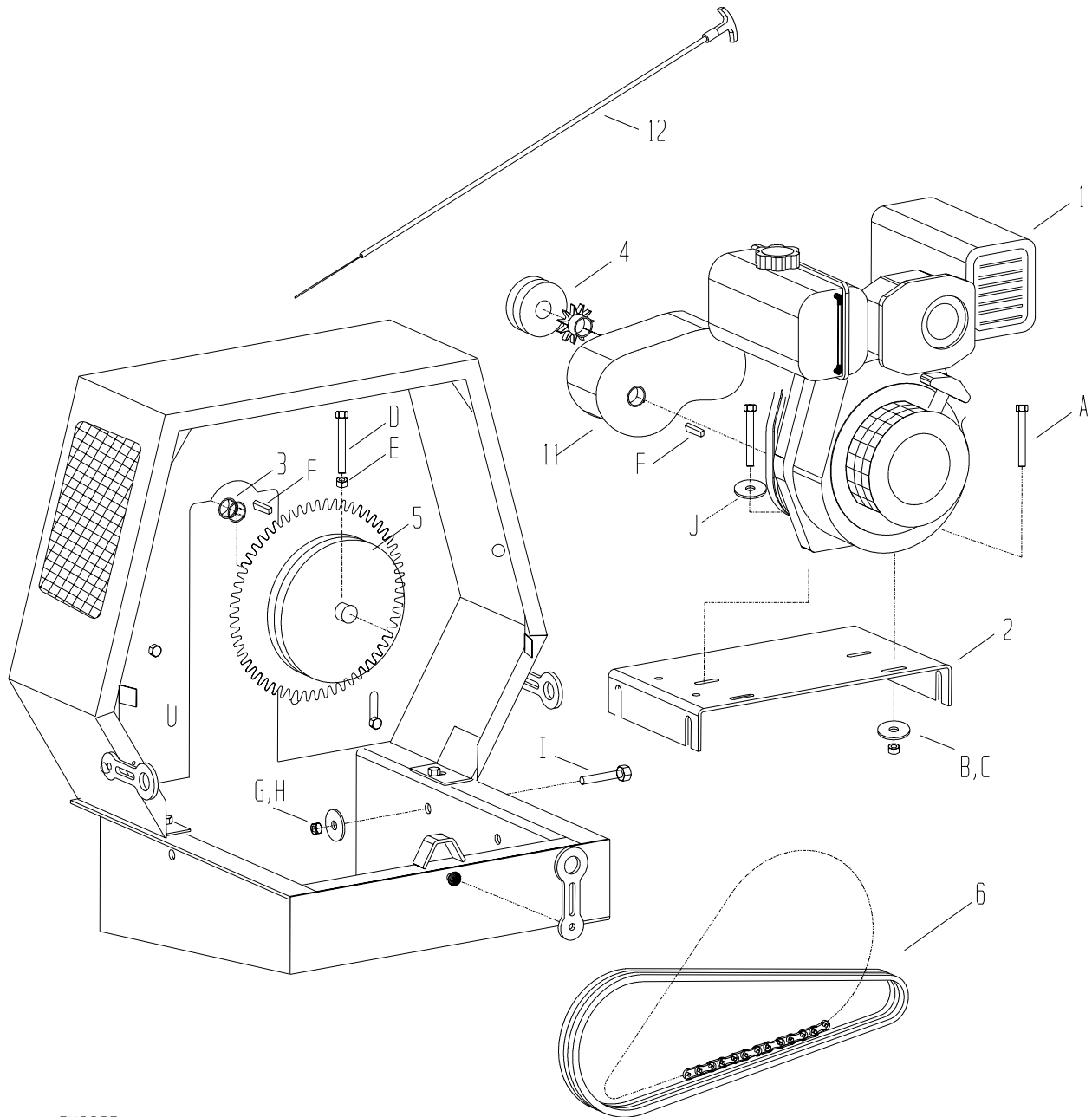
# PARTS LIST

## Gas/Diesel Belt Drive Components

ITEM	PART NO.	DESCRIPTION	QTY.
1	37093	Engine (8hp B&S)	1
1a	37098	Engine (8hp B&S I/P)	1
1b	30597	Engine (8.5hp Robin)	1
1c	30155	Engine (8hp Honda)	1
1d	42999	Engine (10hp B&S I/P)	1
1e	30245	Engine (6hp Yanmar Diesel)	1
2	28045-2	95CM Motor Base (All except Yanmar)	1
2a	39664-2	95CM Motor Base (6hp Yanmar Diesel)	1
3	32176	Collar Locking	1
4	34984	Sheave 2AK 30 x 1	1
5	34986	Sheave 2AK 94 x 1-3/16	1
6	35934	V-Belt A37 (8hp Honda, 6hp Yanmar Diesel)	2
6a	35279	V-Belt A38 (8hp B&S)	2
6b	35280	V-Belt A39 (8.5hp Robin, 10hp B&S I/P)	2
A	80169	HHCS 5/16 - 18 x 2 ZN (8hp B&S, 10hp B&S I/P)	4
A1	80178	HHCS 3/8 - 16 x 2 ZN (8hp Honda, 6hp Yanmar Diesel, 8.5 Robin)	4
B	80114	NUTNY 5/16 - 18 ZN (8hp B&S, 10hp B&S I/P)	4
B1	80056	NUTNY 3/8 - 16 ZN (8.5hp Robin, 8hp Honda, 6hp Yanmar Diesel)	4
C	26325	WSHR .375 ID x 1.00 OD x .187	4
D	80259	SQHSS 5/16 - 18 x 1-1/2 ZN	1
E	80245	NUTFX 5/16 - 18 ZN	1
F	80100	KEY 1/4 x 1/4 x 1	2
G	80051	NUTNY 1/2 - 13 ZN	4
H	80118	WSHR 1/2 WROT ZN	4

# PARTS LIST

## Gas/Diesel Chain Drive Components



CM002B

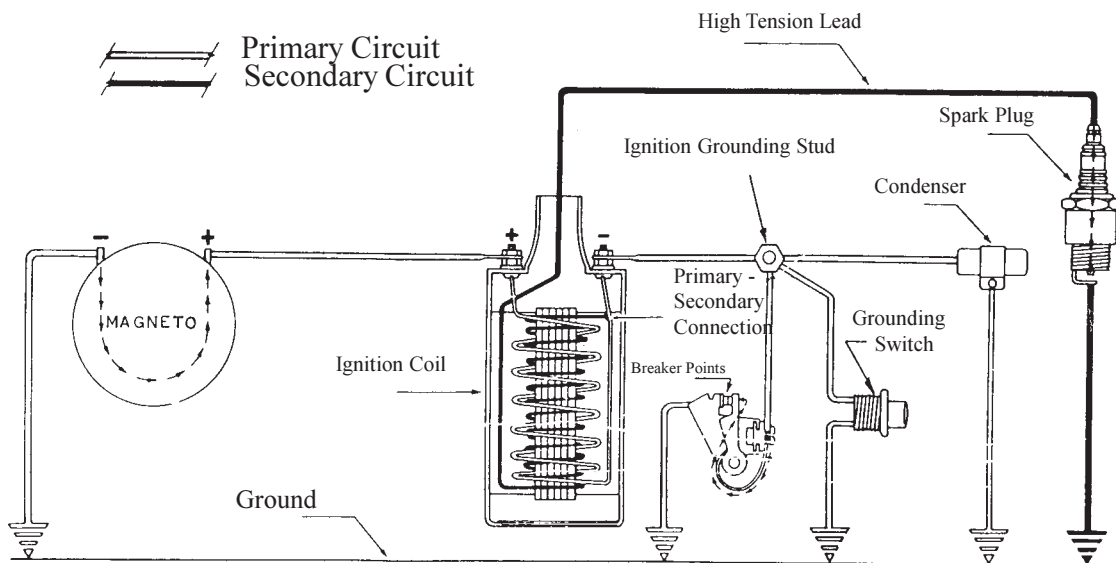
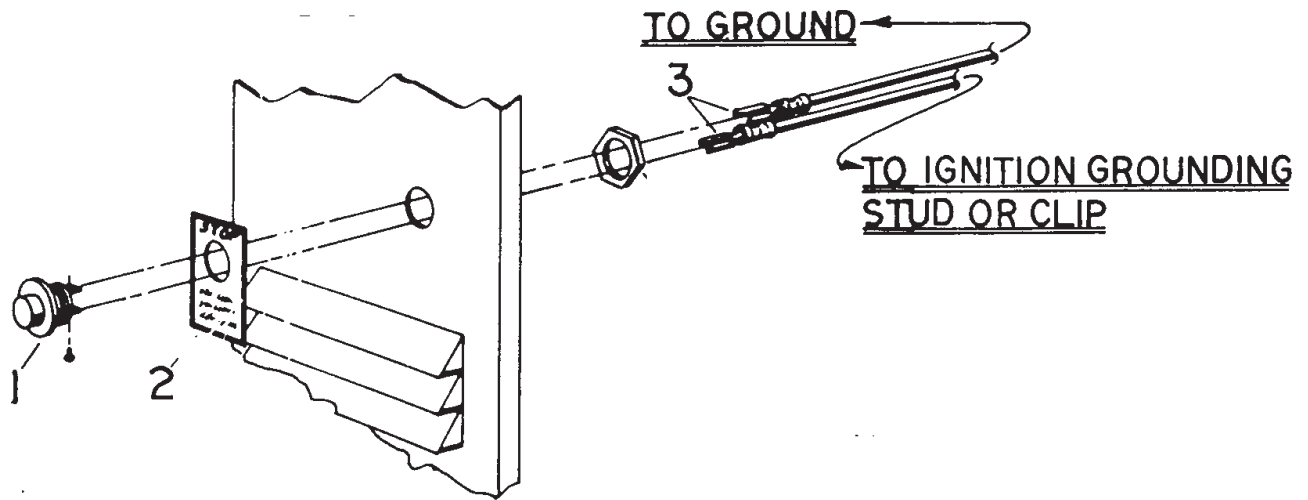
# PARTS LIST

## Gas/Diesel Chain Drive Components

ITEM	PART NO.	DESCRIPTION	QTY.
1	37093	Engine (8hp B&S)	1
1a	37098	Engine (8hp B&S I/P)	1
1b	30597	Engine (8.5hp Robin)	1
1c	30155	Engine (8hp Honda)	1
1d	42999	Engine (10hp B&S I/P)	1
1e	30245	Engine (6hp Yanmar Diesel)	1
2	28045-2	95CM Motor Base (all except Yanmar)	1
2a	39664-2	95CM Motor Base (6hp Yanmar Diesel)	1
3	32176	Collar Locking	1
4	35284	Sprocket 50B11 x 1	1
5	34099	Sprocket 50B38 x 1-3/16	1
6	22040	Set CHN 56 Pitches (8hp B&S, 8hp Honda, 6hp Yanmar Diesel)	1
6a	22041	Set CHN 60 Pitches ( 8.5hp Robin, 10hp B&S I/P)	1
11	39667	Gear Reduction Oil (6hp Yanmar Diesel)	1
12	35346	Throttle Diesel (6hp Yanmar Diesel)	1
A	80169	HHCS 5/16 - 18 x 2 ZN (8hp B&S, 10hp B&S I/P)	4
A1	80178	HHCS 3/8 - 16 x 2 ZN (8hp Honda, 6hp Yanmar Diesel, 8.5hp Robin)	4
B	80114	NUTNY 5/16 - 18 ZN (8hp B&S, 10hp B&S I/P)	4
B1	80056	NUTNY 3/8 - 16 ZN (8.5hp Robin, 8hp Honda, 6hp Yanmar Diesel)	4
C	26325	WSHR .375 ID x 1.00 OD x .187	4
D	80259	SQHSS 5/16 - 18 x 1-1/2 ZN	1
E	80245	NUTFX 5/16 - 18 ZN	1
F	80100	KEY 1/4 x 1/4 x 1	2
G	80051	NUTNY 1/2 - 13 ZN	4
H	80118	WSHR 1/2 WROT ZN	4

# PARTS LIST

## Grounding Switch





# PARTS LIST

## Grounding Switch

ITEM	PART NO.	DESCRIPTION	QTY.
1	37136	Grounding Switch	1
2	55054	Decal Engine Stop	1
3	21930	Lead Ground 110	2

Your new Stone concrete mixer comes equipped with an outside grounding switch\*\* in addition to the normal grounding button or tab found on most gas engines. This added feature is for your convenience and safety.

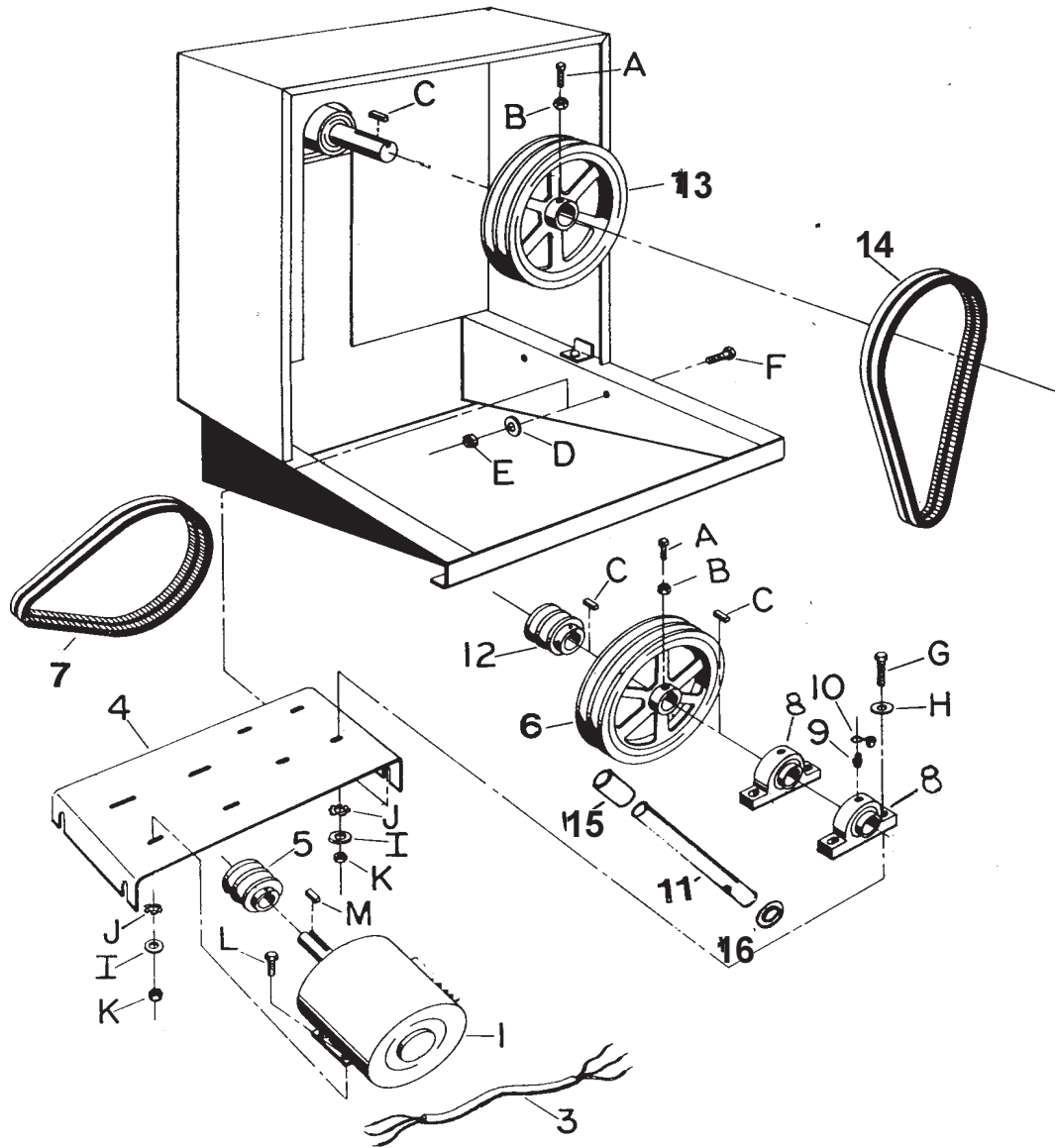
The switch is a single pull single throw (SPST) normally open, momentary contacts push button which grounds out the ignition voltage when pressed. To stop the engine, depress the button and hold in until the engine comes to a complete stop.

Periodically inspect the grounding switch and associated wiring to make sure the system is operating properly. Make sure that there are no loose connections or bare / broken wires. Also make sure that the grounding switch wires are fastened securely out of the way of hot exhaust and engine parts, moving drive components, and pinch points.

\*\* On gasoline powered models only.

# PARTS LIST

Electric Drive



# PARTS LIST

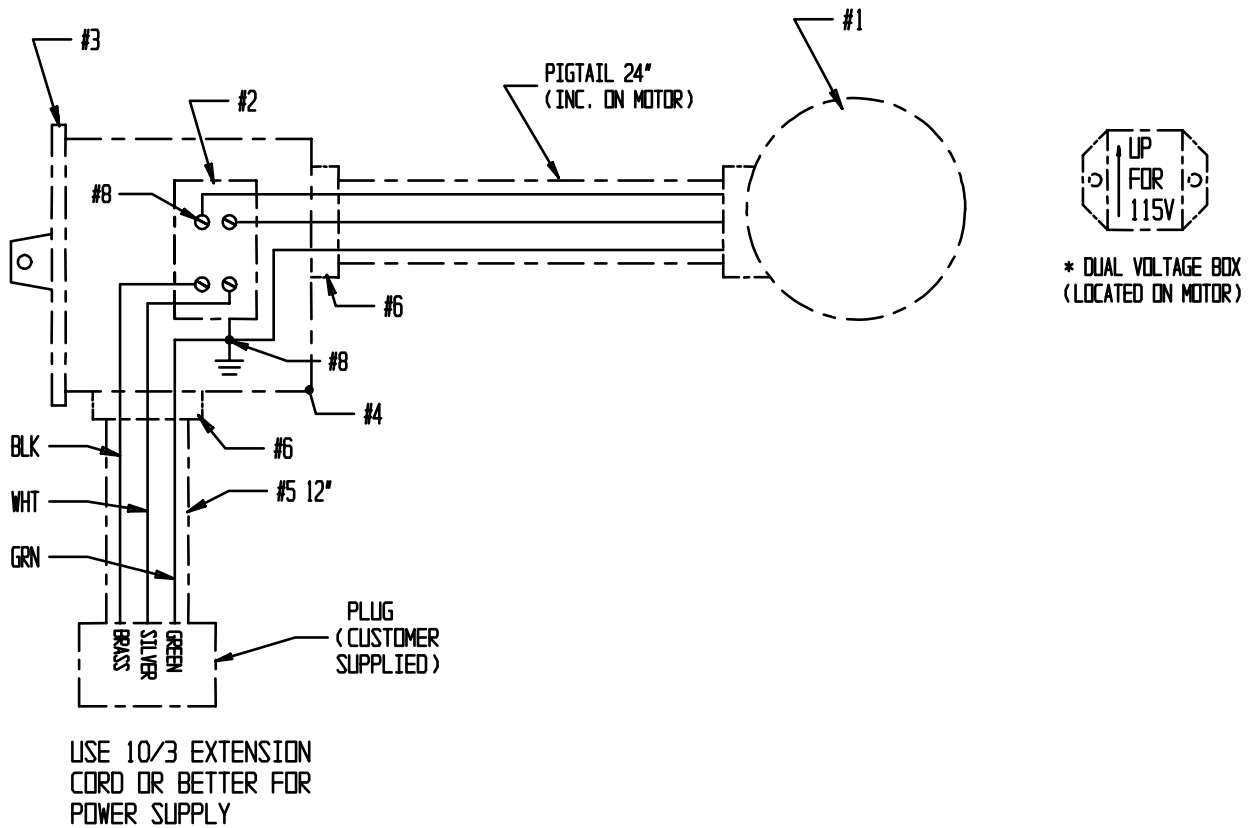
## Electric Drive

ITEM	PART NO.	DESCRIPTION	QTY.
1	30315	Motor Assembly 1.5hp Electric	1
3	48344	Cord 10/3 SO	1 ft.
4	28051-2	Motor Base/Electric 1.5 Electric	1
5	34068	Sheave 2AK23 - 7/8 (primary drive includes items 5, 6, & 7)	1
6	35278	Sheave 2AK61 x 1 (primary drive includes items 5, 6, & 7)	1
7	34617	V-Belt A28 (primary drive includes items 5, 6, & 7)	2
8	32208	Pillow Block	2
9	46042	Fitting	2
10	47001	Caplug Blue	2
11	22509	Shaft Assembly	1
12	34984	Sheave 2AK30 x 1 (belt drive only--secondary drive incl 12, 13, & 14.)	1
12a	35284	Sprocket 50B11 x 1 (chain drive only--secondary drive incl 12, 13, & 14.)	1
13	34992	Sheave 2AK114 x 1-3/16 (belt drive only--secondary drive incl 12, 13, & 14.)	1
13a	34099	Sprocket 50B38 x 1-3/16 (chain drive only--secondary drive incl 12, 13, & 14.)	1
14	34989	V-Belt A51 (belt drive only)	2
14a	22048	Set CHN RC50 72 Pitches (chain drive only--secondary drive incl 12, 13, & 14.)	1
14b^	34104	Link Conn (chain drive only--included with 22048 Chain Set.)	1
15	29138	Spacer Pillow Block	1
16	38122	Washer Retainer Pin	1
A	80259	SQHSS 5/16 - 18 x 1-1/2 ZN	1
B	80245	NUTFX 5/16 - 18 ZN	1
C	80100	KEY 1/4 x 1/4 x 1	3
D	80118	WSHR 1/2 WROT ZN	4
E	80051	NUTNY 1/2 - 13 ZN	5
F	80713	HHCS 1/2 - 13 x 1-1/2 ZN	4
G	80072	HHCS 3/8 - 16 x 1-3/4 ZN	4
H	80348	WSHR 5/16 WROT ZN	4
I	26325	WSHR .375 ID x 1.00 OD x .187	8
J	80119	WSHRLT 3/8 INT/EXT	8
K	80146	NUTNY 3/8 - 16 ZN	8
L	80145	HHCS 3/8 - 16 x 1-1/4 ZN	4
M	80061	KEY 1/4 x 1/4 x 1-1/2	1

# PARTS LIST

## Electric Wiring

1-1/2 HP ELECTRIC WIRING / 1 PHASE  
STANDARD WIRING 115 VOLT 19 AMP.  
FOR 230 VOLT 9.5 AMP, ROTATE \* DUAL  
VOLTAGE BOX 180 DEGREE, USE PROPER PLUG



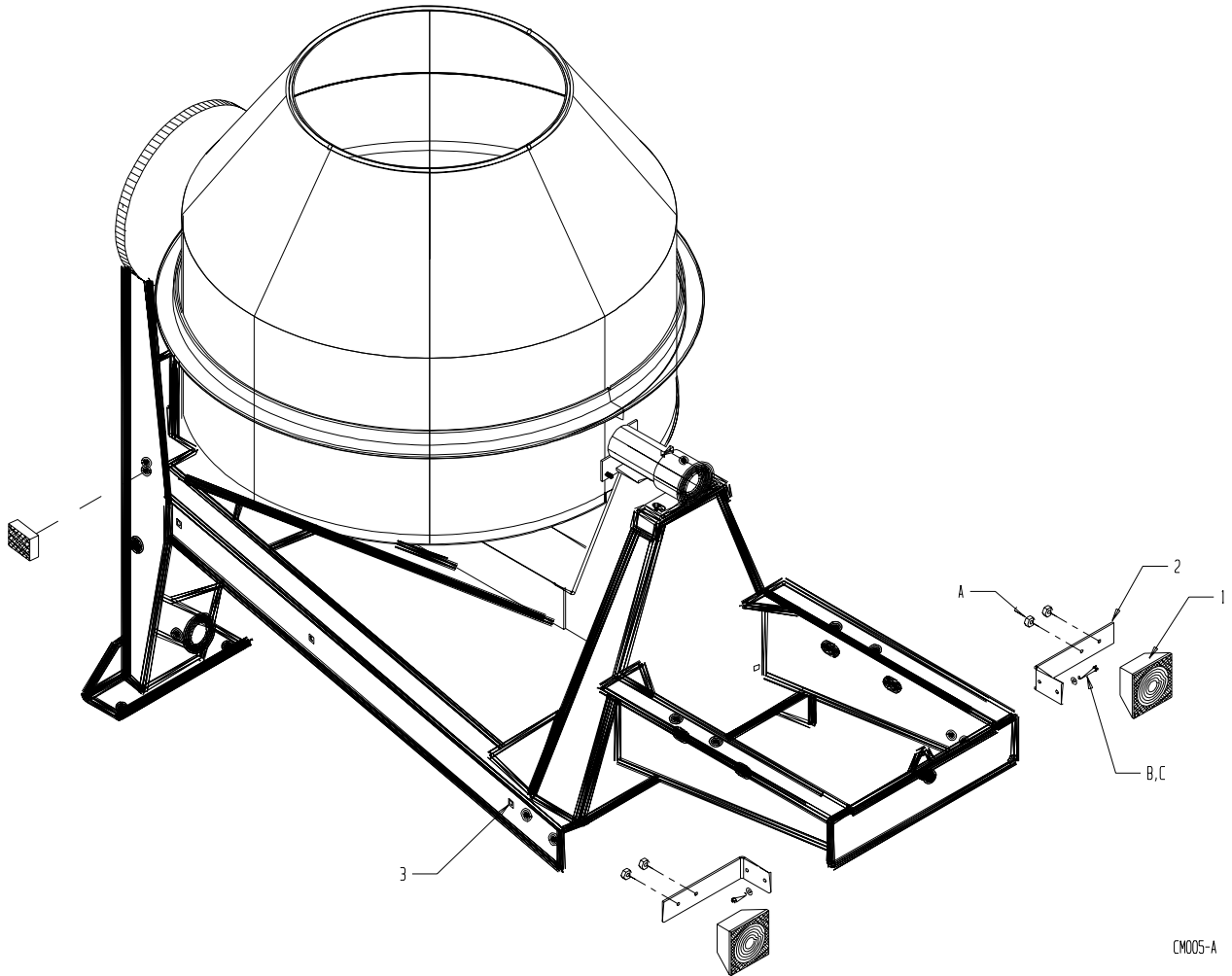
# PARTS LIST

## Electric Wiring

ITEM	PART NO.	DESCRIPTION	QTY.
1	30315	Motor 1-1/2hp 115/230V 1PH	1
2	36379	Switch 30AC-2	1
3	36381	Cover Switch PVC	1
4	36380	Box Switch	1
5	48344	Cord 10/3 SO	1 ft.
6	36383	Cord Grip	2
7	48241	Wire Nut Red	2
8	48346	Term Spade #10 Insul 12-10	6

# PARTS LIST

Trailer Lights Option--95CMP Only



CM005-A

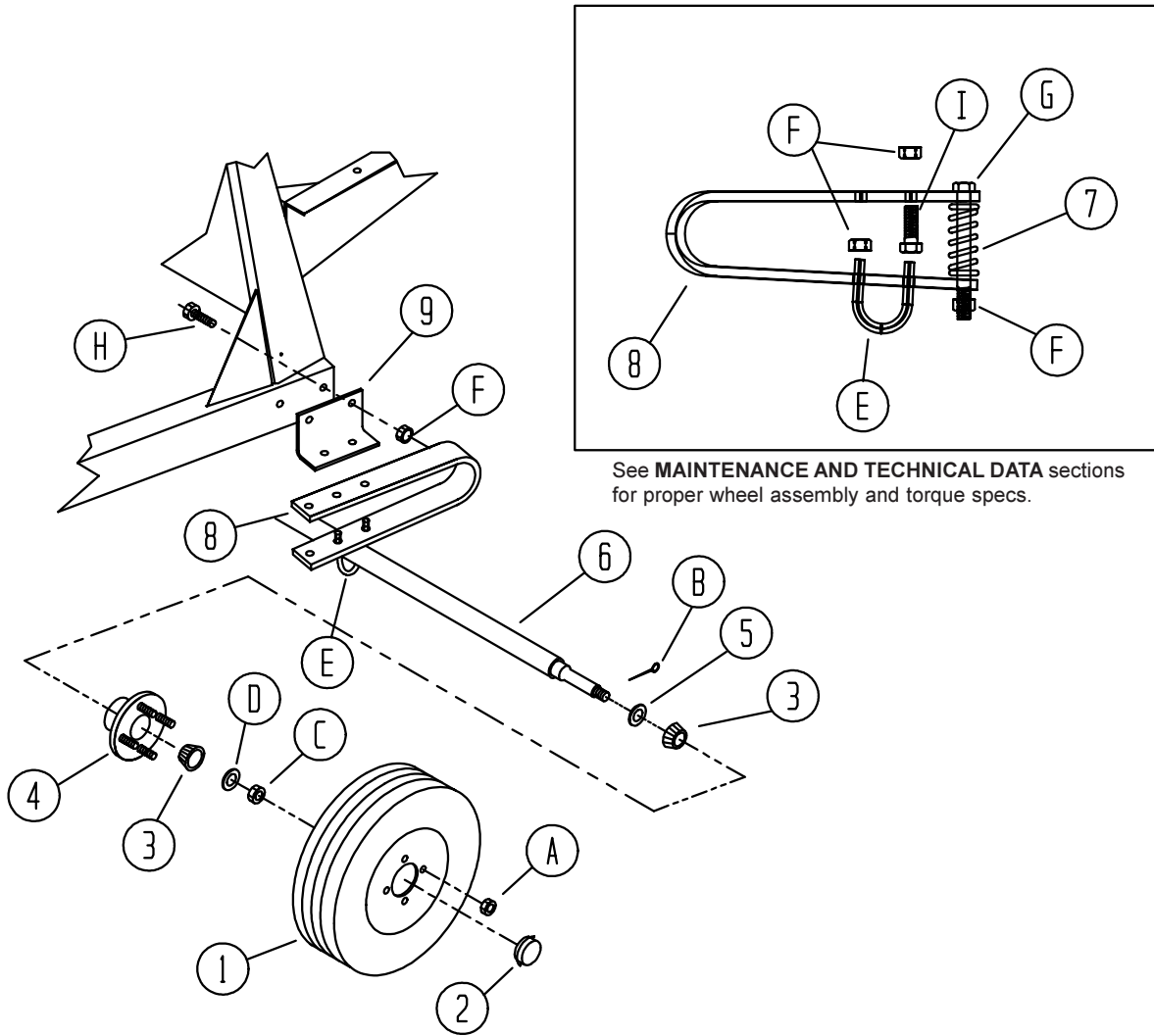
# PARTS LIST

## Trailer Lights Option--95CMP Only

ITEM	PART NO.	DESCRIPTION	QTY.
1	36002	Trailer Lights	1
2	36003	Bracket Trailer Lights	2
3	48329	Tie Holder	10
4^	32087	Bushing Nylon 5/16 ID x 3/8 OD	1
5^	47303	Tie Tyton 4 inch Black	10
6^	48278	Term Fem .25 F-insul 14-16 gage	4
7^	48285	Term Male .25 F-insul 14-16 gage	4
8^	36001	Kit Trailer Lights (Includes 1,2,3,4,5,6,7,8,A,B,C)	1
A	80236	NUTKP 1/4 - 20 ZN	10
B	80347	WSHR 1/4 WROT ZN PL	4
C	80354	HHCS 1/4-20 x 1.00 ZN	4

# PARTS LIST

## Spring Axle Assembly



See MAINTENANCE AND TECHNICAL DATA sections for proper wheel assembly and torque specs.



# PARTS LIST

## Spring Axle Assembly

ITEM	PART NO.	DESCRIPTION	QTY.
1	32307	Tire and Rim B78 x 13	2
2	34573	Dust Cap	2
3	32051	Bearing Cone	4
4	34501	Hub	2
5	32052	Seal, Wheel Hub	2
6	21460-SLV	Axle 56" Spg	1
7	34972	Coil Spring	2
8	26971-SLV	Spring	2
9	26949-SLV	Srkt Spg	2
A	80045	LGNUT 1/2 - 20 ZN	8
B	80315	PINCT 3/16 x 2 ZN	2
C	80054	NTSFX 3/4 - 16 ZN	2
D	80344	WSHR 3/4 SAE ZN	2
E	26195	U-BOLT	2
F	80051	NUTNY 1/2 - 13 ZN	14
G	80052	HHCS 1/2 - 13 x 6-1/2	2
H	80104	HHCS 1/2 - 13 x 1-1/4	4
I	80075	HHCS 1/2 - 13 x 1-1/2	4

# PARTS LIST

## Decal Identification

**CAUTION**

**FOR YOUR SAFETY**

- Read owner's service manual before operating or servicing this machine.
- Always keep unauthorized, inexperienced, untrained people away from this machine.
- Rotating and moving parts will cause injury if contacted. Make sure guards and safety devices are in place before this machine is operated.
- Make sure engine is shut down and spark plug wire disconnected before servicing the machine or approaching the moving parts-if electric motor, disconnect plug.
- Never leave machine unattended when operating. Always stop engine or motor before adding fuel or oil.

55388

**STOP**

**DEPRESS BUTTON AND HOLD TO STOP ENGINE**

55054

**DANGER DIESEL**

Stop engine & extinguish all flames & smoking materials before refueling! Use a safety can!

**DANGER GASOLINE**

Stop engine and extinguish all flames and smoking materials before refueling. Use a safety can.

55388

**WARNING**

Always stop engine when cleaning or adjusting machine. If electric motor pull plug.

55388

**WARNING**

Shut off machine to service or clean.

55388

**WARNING**

Do not run machine with cover open.

55388

This engine has been tested with fuel treated with **STA-BIL®** to prevent gum and varnish residue in tank.

55214

IDLE ENGINE 5 MINUTES BEFORE STOPPING TO IMPROVE SERVICE LIFE

55417

**NOTICE**  
CONTACT THE MANUFACTURER IMMEDIATELY AT 1-800-888-9926 IF SAFETY OR HAZARD DECALS OR OWNER'S MANUAL ARE MISSING FROM THIS EQUIPMENT.

55156

**SAFETY CHAIN**  
"PATENT #4180281"  
CROSS CHAIN UNDER TOW POLE WITH 4" - 5" VERTICAL SLACK  
LATCH CHAIN AT DESIRED LENGTH

FOR EXCESS OR STORAGE, INSERT CHAIN INTO HOLE

FEED END THROUGH LINK OF CHAIN BEFORE SECURING WITH CONNECTING LINK DO THE SAME WITH OPPOSITE END OF CHAIN

**CAUTION**  
READ OPERATING INSTRUCTIONS BEFORE RUNNING MIXER

55121

### SAFETY INSTRUCTION

**CAUTION:** READ OWNER'S SERVICE MANUAL BEFORE OPERATING OR SERVICING THIS MACHINE.

**CAUTION:** ALWAYS KEEP UNAUTHORIZED, INEXPERIENCED, UNTRAINED PEOPLE AWAY FROM THIS MACHINE.

**CAUTION:** ROTATING AND MOVING PARTS WILL CAUSE INJURY IF CONTACTED. MAKE SURE GUARDS AND SAFETY DEVICES ARE IN PLACE BEFORE THIS MACHINE IS OPERATED. MAKE SURE ENGINE IS SHUT DOWN AND SPARK PLUG WIRE DISCONNECTED BEFORE SERVICING THE MACHINE OR APPROACHING THE MOVING PARTS-IF ELECTRIC MOTOR, DISCONNECT PLUG.

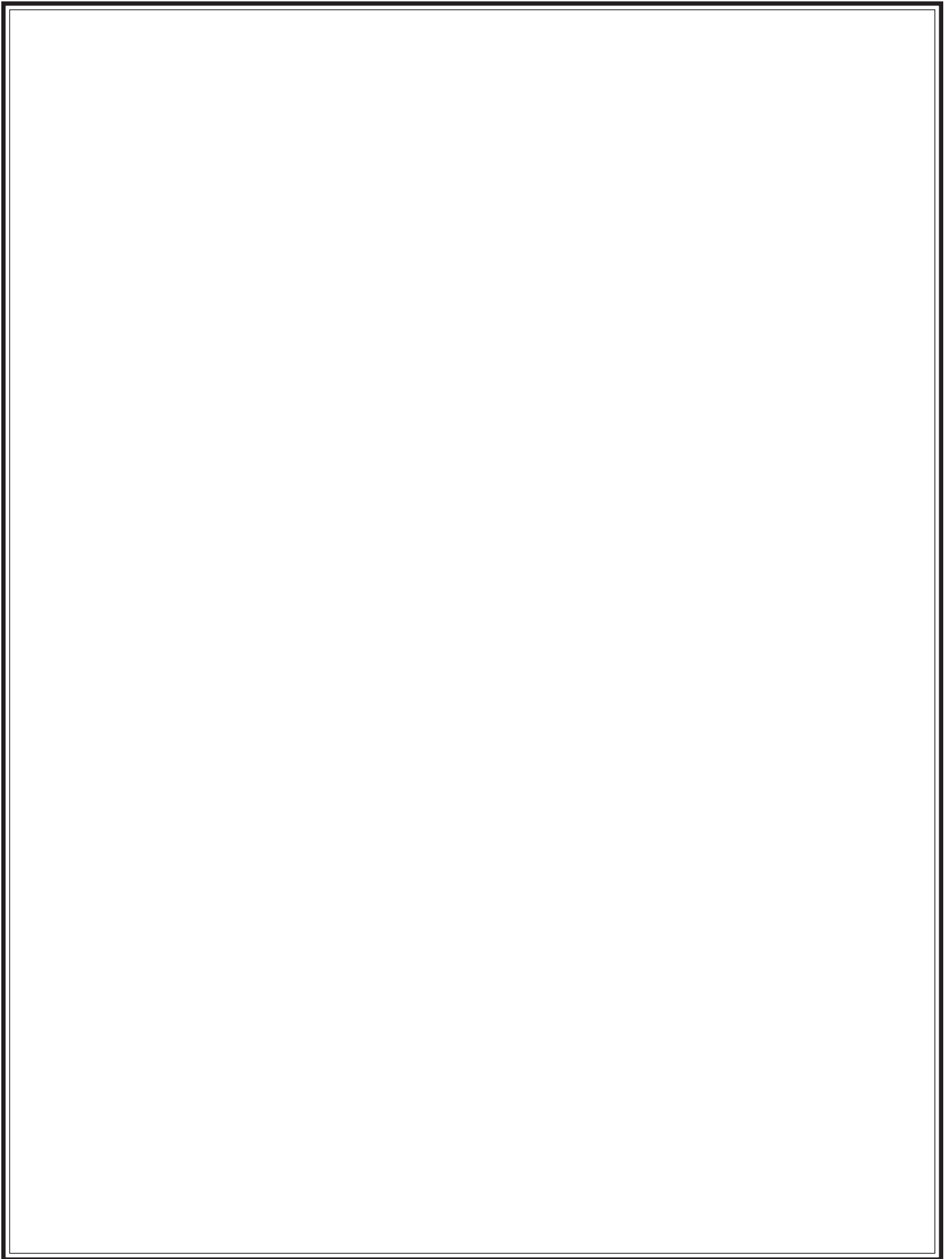
**CAUTION:** NEVER LEAVE MACHINE UNATTENDED WHEN OPERATING. ALWAYS STOP ENGINE OR MOTOR BEFORE ADDING FUEL OR OIL.

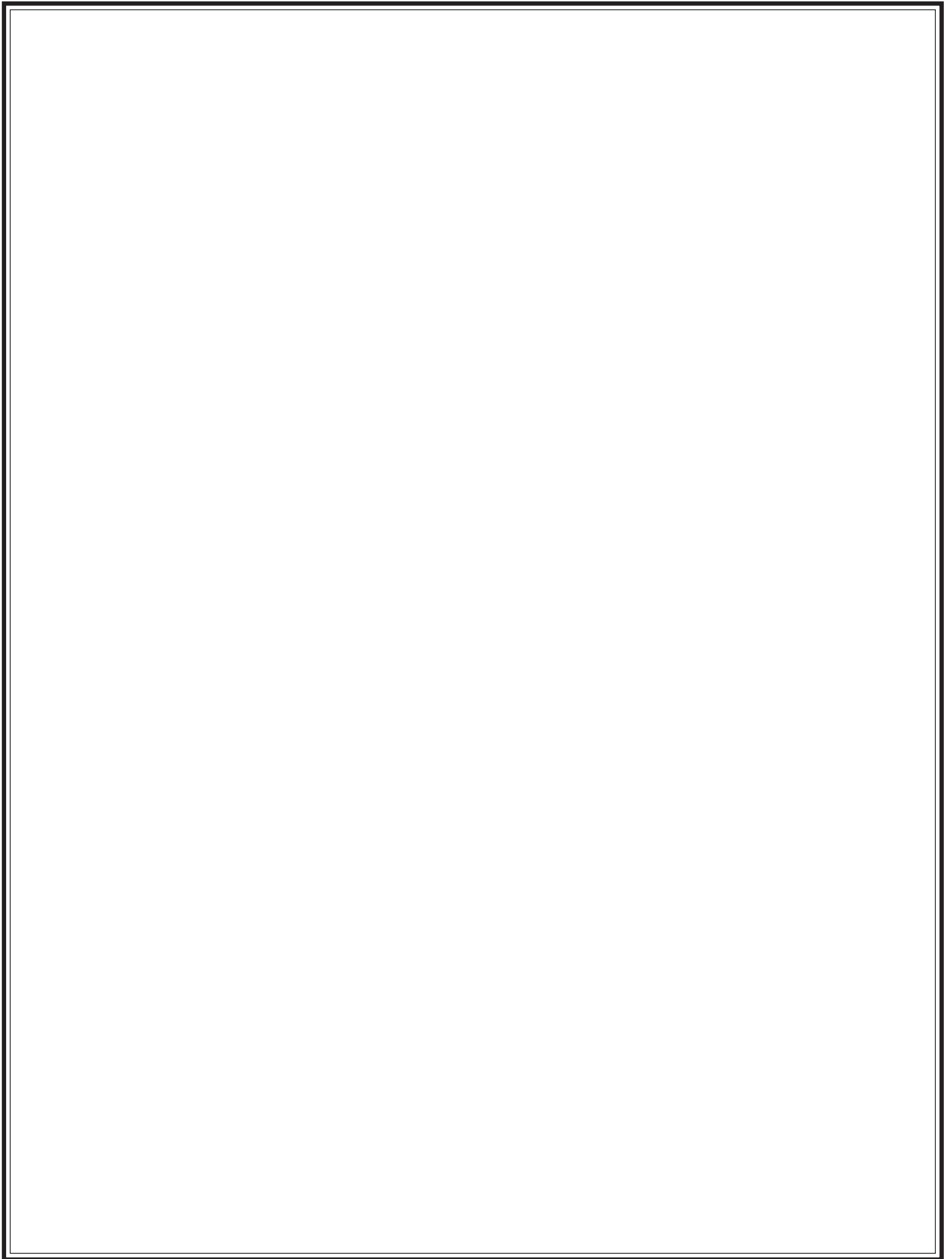
55046

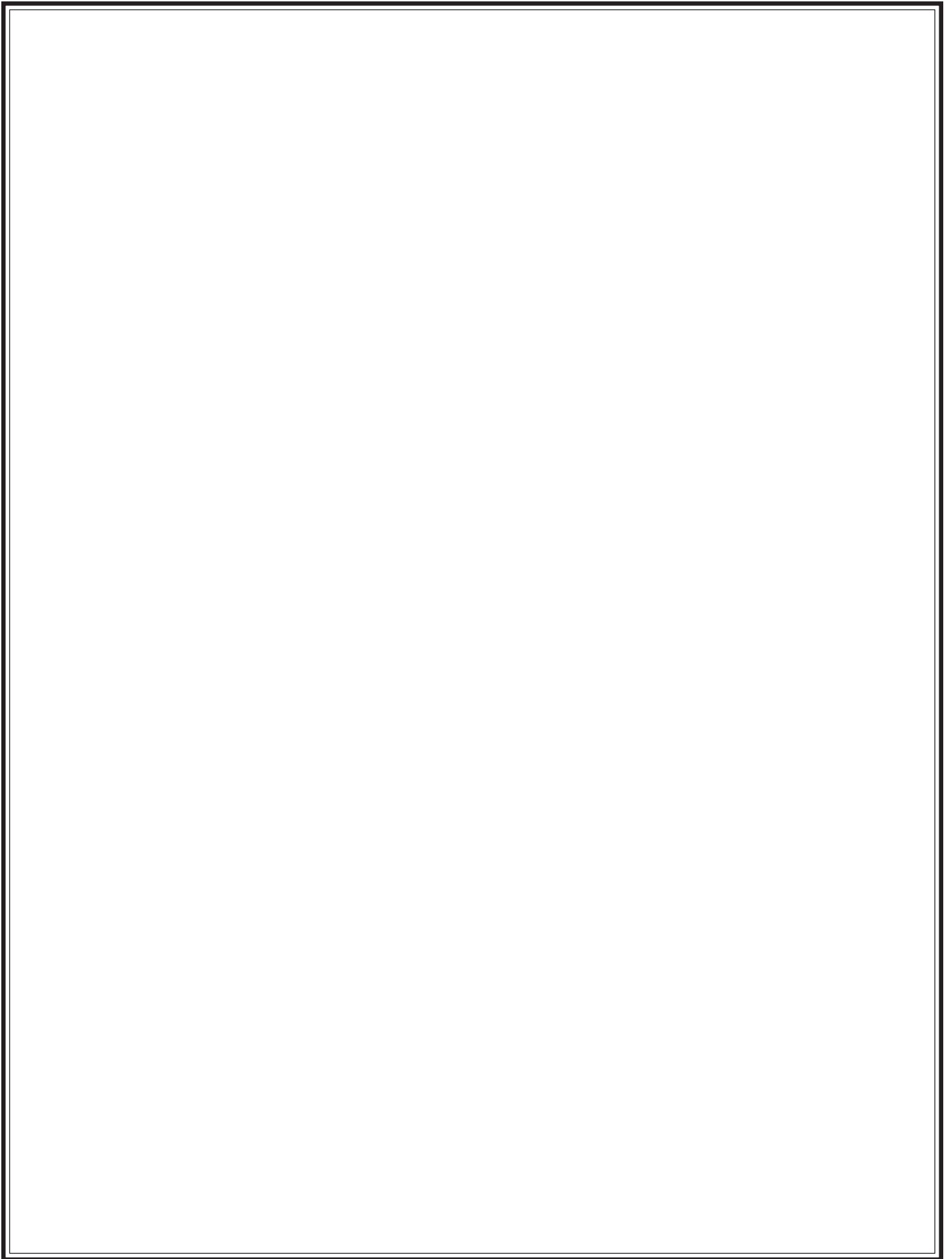
# PARTS LIST

## Decal Identification

ITEM	PART NO.	DESCRIPTION	QTY.
1	55388	Decal Set PM Safety	1
2	55054	Decal Engine Stop	1
3	55214	Decal Sta-Bil	1
4	55417	Decal Idle Engine	1
5	55156	Decal Notice	1
6	55121	Decal Safety Chain	1
7	55046	Decal Safety Instructions	1
8	55148	Decal Warning Diesel (for Diesel engines only)	1







**CALIFORNIA PROPOSITION 65 WARNING: Engine exhaust from this product contains chemicals known to the State of California to cause cancer, birth defects, or other reproductive harm.**



***Bred Tough. Technology Born to Work.  
The Way It Ought To Be.***

Stone Construction Equipment, Inc.  
P.O. Box 150, Honeoye, New York 14471  
Phone: (800) 888-9926  
Fax: 585-229-2363  
e-mail: [sceny@stone-equip.com](mailto:sceny@stone-equip.com)  
www: [stone-equip.com](http://stone-equip.com)

A 100% employee-owned American manufacturer

© 1994 Stone Construction Equipment, Inc.  
Printed in U.S.A.