

Combination Bucket SPECIFICATIONS

EDGE[®]

FITS SKID STEER LOADERS

Features/Benefits:

- Two large cylinders for powerful clamping
- Use for grading, scraping, dozing and grappling
- Three bolt-on edges on heavy-duty models
- Optional spill guard is available



Specifications:

Model	Weight	Overall Width	Cylinders (2)	Heaped Capacity
CB60	773 lbs (351 kg)	60" (1524 mm)	3" x 6" (76 x 152 mm)	15.22 ft ³ (0.43 m ³)*
CB66	824 lbs (374 kg)	66" (1676 mm)	3" x 6" (76 x 152 mm)	16.92 ft ³ (0.48 m ³)
CB72	875 lbs (396 kg)	72" (1828 mm)	3" x 6" (76 x 152 mm)	18.62 ft ³ (0.53 m ³)
CB73HD**	1170 lbs (531 kg)	73" (1854 mm)	3" x 6" (76 x 152 mm)	17.82 ft ³ (0.50 m ³)
CB82HD**	1320 lbs (599 kg)	82" (2082 mm)	3" x 6" (76 x 152 mm)	20.20 ft ³ (0.57 m ³)
CB87HD**	1400 lbs (635 kg)	87" (2209 mm)	3" x 6" (76 x 152 mm)	21.52 ft ³ (0.61 m ³)

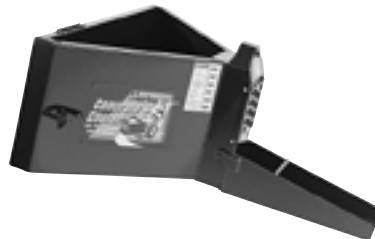
* Heaped capacity with spill guard

** Heavy-duty models (includes three bolt-on edges)

Complimentary Products



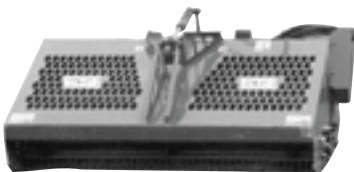
Hopper Broom



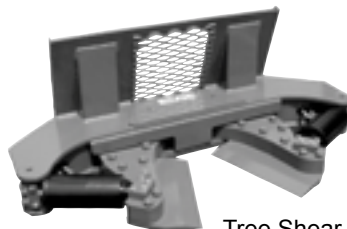
Concrete Bucket



Stump Grinder



Auto Rake



Tree Shear



Log Splitter

ceattachmentsinc.

Every Attachment for EVERY Job.[®]

phone: 1.866.232.8224

direct line: 1.262.387.1210

fax: 1.262.387.1247

web: www.ceattach.com

Spec #590634