



TEREX

SKL834

Wheel Loader

OPERATING WEIGHT	10,585 – 11,240 lbs (4,800 – 5,100 kg)
NET ENGINE POWER	60 hp (44 kW)
BUCKET CAPACITY	1.0 – 1.60 yd ³ (0.8 – 1.20 m ³)
DRAWBAR PULL	9,395 lbs (4,175 daN)



Operating Data, Standard Equipment*	
Operating weight (SAE J 1197)	11,240 lbs (5,100 kg)
Tipping load, straight at full reach	8,577 lbs (3,890 kg)
Tipping load, straight (SAE J 732)	11,731 lbs (5,320 kg)
Tipping load, articulated at full reach	7,563 lbs (3,430 kg)
Tipping load, articulated (SAE J 732)	10,352 lbs (4,695 kg)
Operating load, fully articulated	5,176 lbs (2,348 kg)
Total length, bucket on ground	16' 3" (4.96 m)
Total width	6' 1" (1.85 m)
Turning radius (walls)	13' 7" (4.14 m)
Height (top of cab)	8' 9" (2.67 m)

*With rear axle weights.

WHEEL LOADER
SKL834

Specifications

Engine

Manufacturer, model	Deutz, F4M 2011
Type	4-cylinder diesel engine
Combustion	4-stroke cycle, direct fuel injection
Displacement	189 in ³ (3.1 L)
Net power rating at 2,300 rpm (SAE J 1349)	60 hp (44 kW)
Cooling system	Oil

Electrical System

Nominal voltage	12 V
Battery	12 V / 74 Ah / 400 A

Power Transmission

Hydrostatic drive is closed circuit and independent from loader hydraulics. Automatic adjustment of drawbar pull and speed. Forward and reverse selected from joystick. Infinitely variable speed control in forward and reverse. 4-wheel drive from reduction gear on rear axle via cardan shaft to front axle.

2 speed ranges:

"Low"	0 – 4 mph (0 – 7 km/h)
"High"	0 – 13 mph (0 – 20 km/h)

4 speed ranges (high-speed version optional):

"Low"	0 – 4 mph (0 – 7 km/h)	0 – 11 mph (0 – 18 km/h)
"High"	0 – 8 mph (0 – 13 km/h)	0 – 22 mph (0 – 36 km/h)
Drawbar pull	9,395 lbs (4,175 daN)	

Axles

Front: Rigid planetary final drive axle, limited slip-type differential.

Rear: Oscillating (with cushioning) planetary final drive axle with integrated reduction gear. Limited slip-type differential.

Oscillation	± 12°
-------------	-------

Tires

Standard	405/70 R 18 SPT 9
----------	-------------------

Brakes

Service brake: Hydraulically actuated center-mounted drum brake acting on all 4 wheels via 4-wheel-drive.

Auxiliary brake: Hydrostatic drive provides dynamic braking.

Parking brake: Mechanically operated drum brake at front axle.

Steering

Articulated with final position damping on both sides, fully hydraulic through load-sensing priority valve and quick and easy steering even at engine idle-running speed.

Total steering angle	80°
----------------------	-----



Fluid Capacities

Fuel tank	20 gal (75 L)
Hydraulic system (including tank)	14.5 gal (55 L)

Hydraulic System

Pump capacity	17 gpm (64 Lpm)
Maximum working pressure	3,625 psi (250 bar)

Control unit: Proportional hydraulic valve with 3 control circuits and high-speed valve for tilting; single, four-way lever (multi-function lever) for lift and dump cylinders with integrated travel direction selector switch. Float position in control circuit "lowering," electro-hydraulically operated. Additional control circuit including quick couplers and continuous operation function provided as standard.

Loader Frame

Loader frame with true parallel linkage and integrated hydraulic quick-attach system (mechanical option available).

General purpose bucket (SAE J 742)	1.2 yd ³ (0.90 m ³)
Lift capacity at ground level (SAE J 732)	10,800 lbs (48,000 N)
Breakout force at bucket edge (SAE J 732)	10,128 lbs (45,000 N)

Fork Lift Attachment

Operating load (SAE J 1197)*	2,945 lbs (1,335 kg)
Width of fork carrier	4' 1" (1.24 m)
Length of pallet forks (3.9" x 1.6" / 100 x 40 mm)	44" (1,120 mm)
Stability factor on level and solid ground	2
Load center from fork attachment point	22" (560 mm)

Cab

Rubber-mounted full-vision steel cab, ROPS (SAE J 1040) and FOPS** (SAE J 231) certified.

Cab featuring two doors, level entry to cab, easy-to-be-cleaned cab floor

Electric windshield wipers and washer (front and rear), tinted panoramic safety glass and sliding window on left-hand side.

Driver's seat with hydraulic cushioning and lap belt (weight-adjustable).

Cab heating with 3-setting heater fan (choice fresh air/recirculating air) and windshield defroster (front and rear).

Tilt and height adjustable steering wheel

Radio and air conditioning wiring pre-installed.

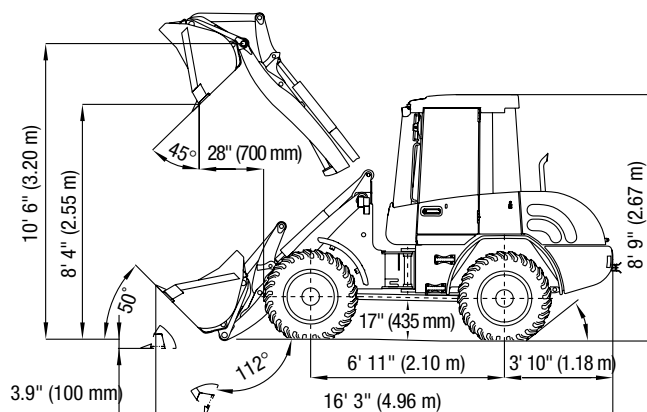
2 front working floodlights.

Noise emission ambient LWA	100 dB (A)
Measured in dynamic measuring cycle (EEC-directive 86/662).	

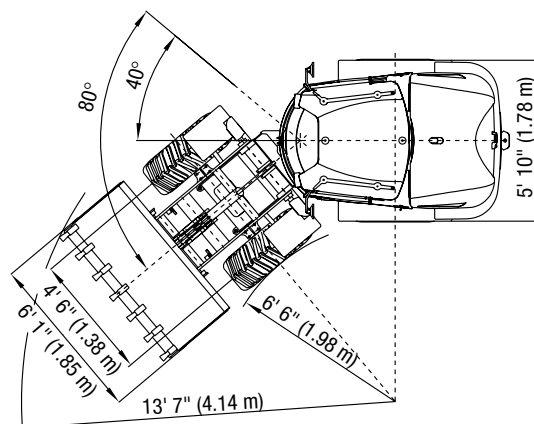
*With rear axle weights.

**FOPS-approved only with skylight guard (optional).

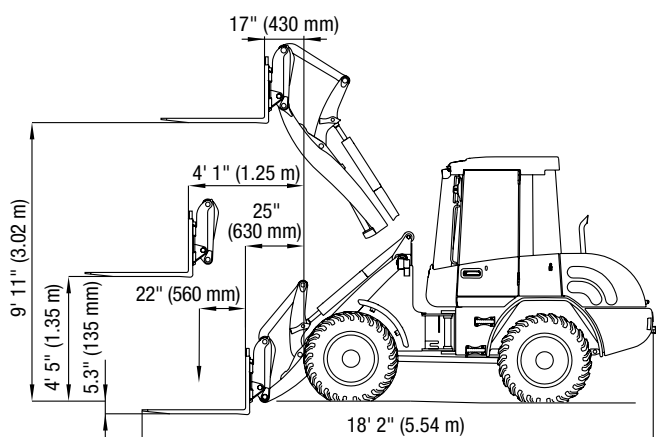
Dimensions: General Purpose Bucket



Capacity (SAE J 742) 1.2 yd³ (0.9 m³)
Density of material: Max. 2,700 lbs/yd³ (1.6 t/m³)

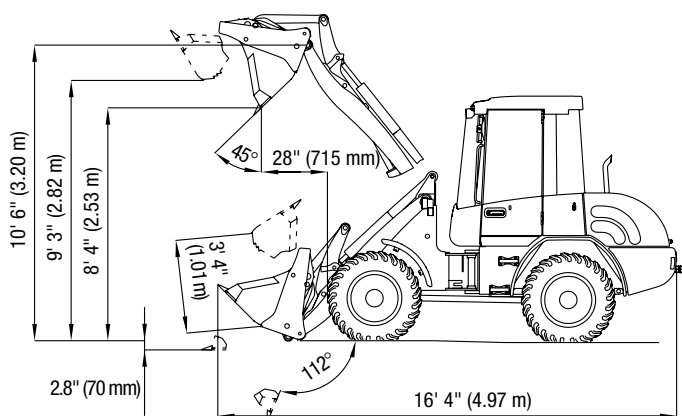


Fork Lift Attachment



Operating load, complete lift range: 2,945 lbs. (1,335 kg) with rear axle weights

Multi-Purpose Bucket

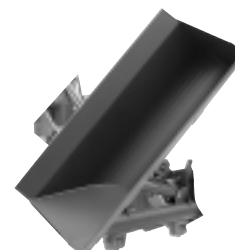


Capacity (SAE J 742) 1.0 yd³ (0.8 m³)
Density of material: Max. 2,700 lbs/yd³ (1.6 t/m³)

Attachments



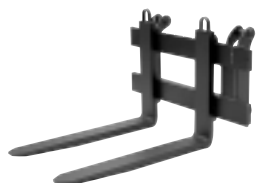
Quarry Bucket



Side Dump Bucket



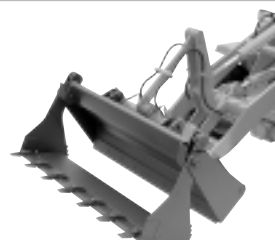
Light Material Bucket



Forks and Carrier



High-tip Bucket



Multi-purpose Bucket



Crane Jib

Wheel Loader SKL834

Optional Attachments / Accessories

Tires	
335/80 R 20 XM 27 TL Michelin	
335/80 R 20 MPT 70-E	
Other tires available on request.	

Front Attachments	
Fork lift attachment with forks	3.9" x 1.8" x 44" (100 x 45 x 1,120 mm)
Standard bucket	1.1 yd ³ (0.80 m ³)
Light-material bucket	1.30 yd ³ (1.00 m ³)
Super light-material bucket	1.60 yd ³ (1.20 m ³)
Side-dump bucket	0.90 yd ³ (0.70 m ³)
High-tip bucket	0.90 yd ³ (0.70 m ³)
Multi-purpose bucket	0.90 yd ³ (0.70 m ³)
Cutting edges	
Bucket teeth	
Load hook attachable on pallet forks	

Quick-Attach System	
Mechanically actuated	

Operator's Stand	
Air-cushioned operator's seat with orthopedic lumbar support and adjustable armrests and headrest.	
Independent diesel heating with timer	

Diesel Engine - Optional Equipment	
Diesel exhaust cleaner	
Alternative fuels available on request.	

Cab - Optional Equipment	
FOPS-skylight guard	
Sliding window integrated in right-hand door	
Working floodlight (rear)	
Yellow beacon	
Pressurized cab	
Air conditioning	

Further Options	
High-speed travel option	22 mph (36 km/h)
Filling with biodegradable hydraulic oil / Ester Base VI 68	
Outlet for hydraulic hand-held hammer	
Special creeping speed version available on request	
Immobilizer (anti-theft device)	
Pressure-less hydraulic return line	
Pilot-controlled hose-rupture safety valves for lift and tilt cylinders	

Further attachments available on request.



TEREX Construction Americas

8800 Rostin Road
Southaven, MS 38671
USA

TEL 662-393-1800
SALES 866-837-3923
PARTS & TECH SUPPORT 888-201-6008
FAX 662-393-1700
EMAIL sales@terexca.com
WEB terexca.com

For more information, product demonstration, or details on purchase, lease and rental plans, please contact your local TEREX Distributor.

Effective date: January 1, 2005. For further information, please contact your local distributor or the TEREX sales office listed. Continuous improvement of our products is a TEREX policy. Product specifications are subject to change without notice or obligation. The photographs and drawings in this brochure are for illustrative purposes only. Refer to the appropriate Operator's Manual for instructions on the proper use of this equipment. Failure to follow the appropriate Operator's Manual when using our equipment or to otherwise act irresponsibly may result in serious injury or death. Prices and specifications subject to change without notice. The only warranty applicable is the standard written warranty applicable to the particular product and sale. TEREX makes no other warranty, expressed or implied. Products and services listed may be trademarks, service marks or trade-names of TEREX Corporation and/or its subsidiaries in the USA and other countries and all rights are reserved. "TEREX" is a Registered Trademark of TEREX Corporation in the USA and many other countries. Copyright ©2005 TEREX Corporation

SKL834 2.5K 0105A Part #109005