

THE
BARRETO
MODEL E916/918
Y-SERIES HYDRAULIC REAR TINE TILLER
EXPLODED VIEWS WITH PART NUMBERS

CONGRATULATIONS!

You are now the proud owner of the BARRETO Y-Series 916/918 tiller. The following pages have detailed views of your tiller, along with corresponding part numbers.

Thank you for your patronage and confidence in BARRETO equipment.

Machine Identification Record

BARRETO Customer number _____

Machine model number _____

Machine serial number _____

Engine manufacturer _____

Engine model number _____

Engine serial number _____



www.discount-equipment.com

PARTS FINDER

**Search Website
by Part Number**



**Search Manual
Library For Parts
Manual & Lookup Part
Numbers – Purchase
or Request Quote**

Search Manuals

Enter your information to help us find the right parts manual for your machine.

* Brand:

* Model:

* Serial:

* Part Number:

SEARCH

**Can't Find Part or
Manual? Request Help
by Manufacturer,
Model & Description**

Parts Order Form

Please fill in the following information to help us find the right part for your machine.

| | |
|---------------|----------------------|
| Manufacturer: | <input type="text"/> |
| Model: | <input type="text"/> |
| Description: | <input type="text"/> |
| Part Number: | <input type="text"/> |
| Quantity: | <input type="text"/> |
| Notes: | <input type="text"/> |

Submit

Discount-Equipment.com is your online resource for quality parts & equipment.

Florida: **561-964-4949** Outside Florida TOLL FREE: **877-690-3101**

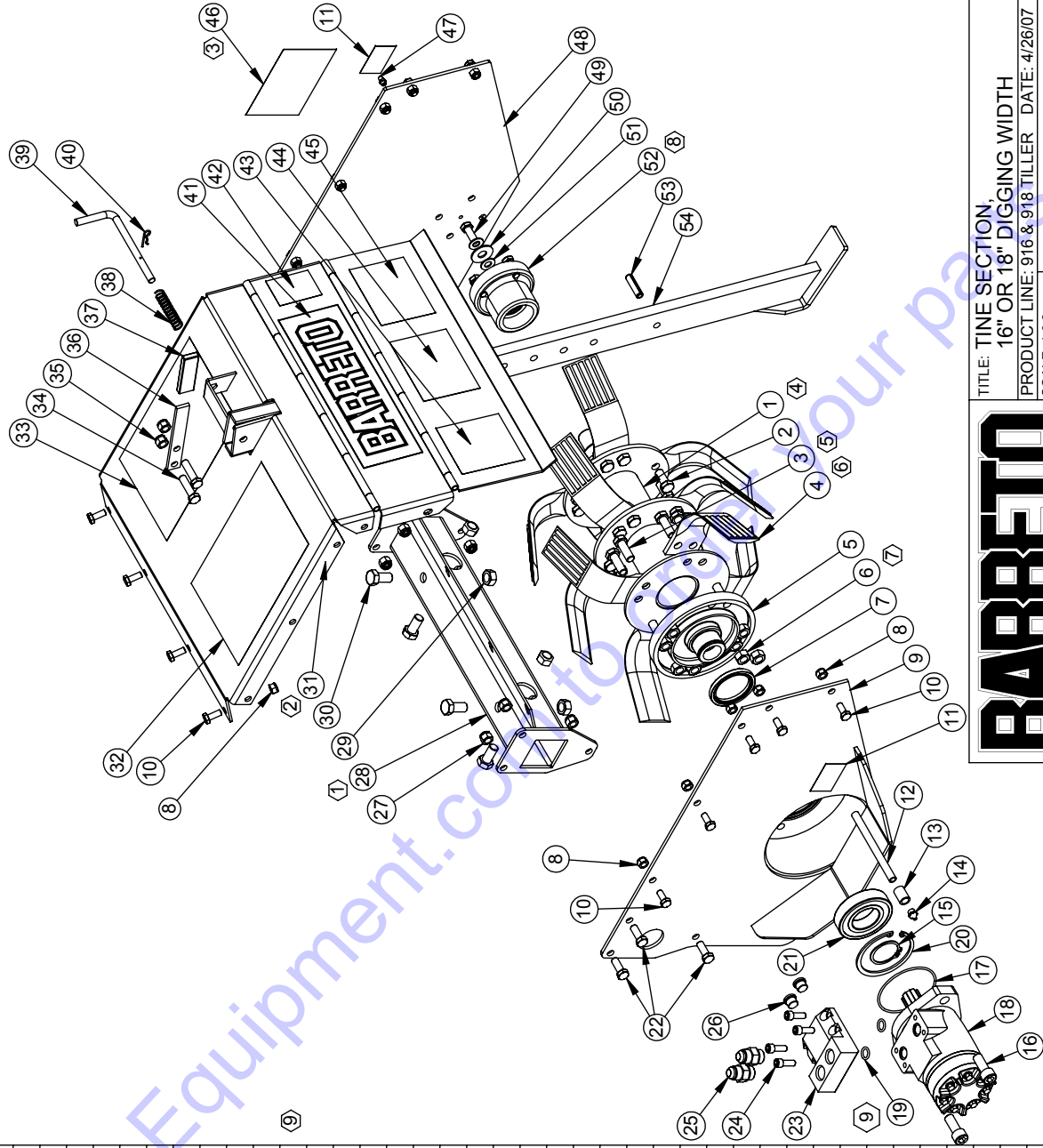
Need parts?

Click on this link: <http://www.discount-equipment.com/category/5443-parts/> and choose one of the options to help get the right parts and equipment you are looking for. Please have the machine model and serial number available in order to help us get you the correct parts. If you don't find the part on the website or on one of the online manuals, please fill out the request form and one of our experienced staff members will get back to you with a quote for the right part that your machine needs.

We sell worldwide for the brands: Genie, Terex, JLG, MultiQuip, Mikasa, Essick, Whiteman, Mayco, Toro Stone, Diamond Products, Generac Magnum, Airman, Haulotte, Barreto, Power Blanket, Nifty Lift, Atlas Copco, Chicago Pneumatic, Allmand, Miller Curber, Skyjack, Lull, Skytrak, Tsurumi, Husquvarna Target, Stow, Wacker, Sakai, Mi-T-M, Sullair, Basic, Dynapac, MBW, Weber, Bartell, Bennar Newman, Haulotte, Ditch Runner, Menegotti, Morrison, Contec, Buddy, Crown, Edco, Wyco, Bomag, Laymor, EZ Trench, Bil-Jax, F.S. Curtis, Gehl Pavers, Heli, Honda, ICS/PowerGrit, IHI, Partner, Imer, Clipper, MMD, Koshin, Rice, CH&E, General Equipment, Amida, Coleman, NAC, Gradall, Square Shooter, Kent, Stanley, Tamco, Toku, Hatz, Kohler, Robin, Wisconsin, Northrock, Oztec, Toker TK, Rol-Air, APT, Wylie, Ingersoll Rand / Doosan, Innovatech, Con X, Ammann, Mecalac, Makinex, Smith Surface Prep, Small Line, Wanco, Yanmar

| REF | QTY. | PART NO. | DESCRIPTION | REF | QTY. | PART NO. | DESCRIPTION |
|-----|------|----------|---|-----|------|----------|---|
| 1 | 1 | 11279 | TINE SHAFT | 48 | 1 | 10146 | SIDE PLATE, RH TINE SECTION |
| 2 | 16 | 05061 | HH CAP SCREW, 7/16-20 NF X 1 G8 ZINC | 49 | 1 | 05059 | HH CAP SCREW, 3/8-16 NC X 1 G5 ZINC |
| 3 | 8 | 05063 | HH CAP SCREW, 7/16-20 NF X 1-1/4 G8 ZINC | 50 | 1 | 05083 | WASHER, 7/16 USS ZINC |
| 4 | 12 | 03196 R1 | TINE, REVERSIBLE | 51 | 2 | 05103 | WASHER, 3/8 A325 HARDENED ZINC |
| 5 | 1 | 11278 | TINE MOTOR HUB, SPLINED | 52 | 1 | 10144 | OUTBOARD BEARING ASSEMBLY |
| 6 | 24 | 05074 | NUT, 7/16-20 NF G8 ZINC | 53 | 1 | 05006 | ROLL PIN (SLOTTED SPRING), 3/8 X 1-1/2 ZINC |
| 7 | 1 | 03930 | SEAL, CR 19763 | 54 | 1 | 01012 | DEPTH BAR |
| 8 | 14 | 05071 | NUT, NYLOCK, 5/16-24 NF ZINC | | | | |
| 9 | 1 | 01067 | TINE MOTOR MOUNT & LH SIDE PLATE | | | | |
| 10 | 14 | 05052 | HH CAP SCREW, 5/16-24 NF X 3/4 G5 ZINC | | | | |
| 11 | 2 | 03040-04 | DECAL, "GREASE DAILY" | | | | |
| 12 | 1 | 05282 | PIPE NIPPLE, 1/8" X 5 LONG | | | | |
| 13 | 1 | 05204 | PIPE COUPLER, 1/8" | | | | |
| 14 | 1 | 05256 | GREASE ZERK, 1/8 NPT | | | | |
| 15 | 1 | 05607 | SNAP RING, SH-156, 1-9/16" EXTERNAL | | | | |
| 16 | 2 | 05585 | SH CAP SCREW, 1/2-13 NC X 1-1/4 G5 ZINC | | | | |
| 17 | 1 | 03001 | O-RING, 2-152, 3-7/16 OD X 3/32 SECTION | | | | |
| 18 | 1 | 04605-F | TINE MOTOR | | | | |
| 19 | 2 | 03926 | O-RING, 2-112N90, 11/16 OD X 3/32 SECTION | | | | |
| 20 | 1 | 05603 | SNAP RING, HO-315, 3-5/32 INTERNAL | | | | |
| 21 | 1 | 03943 | BALL BEARING, SKF 6208 | | | | |
| 22 | 6 | 05056 | HH CAP SCREW, 3/8-24 NF X 1 G5 ZINC | | | | |
| 23 | 1 | 02065 | MANIFOLD, TINE MOTOR | | | | |
| 24 | 4 | 05361 | SH CAP SCREW, 5/16-18 NC X 7/8 ZINC | | | | |
| 25 | 2 | 04520 | FITTING, 6400-8-8 | | | | |
| 26 | 2 | 03302 | FITTING, 6409-6 PLUG | | | | |
| 27 | 6 | 05072 | NUT, NYLOCK, 3/8-24 NF ZINC | | | | |
| 28 | 1 | 10702 | TORQUE TUBE, 17" BOLT ON | | | | |
| 29 | 4 | 05046 | NUT, GRIPCO, 1/2-13 NC G5 ZINC | | | | |
| 30 | 4 | 05067 | HH CAP SCREW, 1/2-13 NC X 1 G5 ZINC | | | | |
| 31 | 1 | 10067 | TINE COVER, 916 | | | | |
| 32 | 1 | 03341-22 | DECAL, "TILLER OPERATING INSTRUCTIONS" | | | | |
| 33 | 1 | 03341-23 | DECAL, "TILLER SAFETY INSTRUCTIONS" | | | | |
| 34 | 2 | 05092 | HH CAP SCREW, 3/8-16 NC X 1-1/2 G5 ZINC | | | | |
| 35 | 2 | 05073 | NUT, NYLOCK, 3/8-16 NC ZINC | | | | |
| 36 | 1 | 01099 | HANDLE, DEPTH BAR | | | | |
| 37 | 1 | 03018 | GRIP, 1/8 X 3/4 X 2-3/4 | | | | |
| 38 | 1 | 03080 | SPRING | | | | |
| 39 | 1 | 01018 | PIN, DEPTH BAR | | | | |
| 40 | 1 | 03065 | HAIR SPRING COTTER #4 | | | | |
| 41 | 1 | 03040-02 | DECAL, "BARRETO", 3-1/2 X 11-1/4 | | | | |
| 42 | 1 | 03040-01 | DECAL, "MADE IN USA" | | | | |
| 43 | 1 | 03040-08 | DECAL, "WARNING" (YELLOW) | | | | |
| 44 | 1 | 03040-03 | DECAL, "CAUTION" (BLACK & WHITE) | | | | |
| 45 | 1 | 03040-07 | DECAL, "CAUTION" (YELLOW) | | | | |
| 46 | 1 | 04340 | DECAL, "916" | | | | |
| 47 | 1 | 05044 | GREASE ZERK, 1/4-28 UNF | | | | |

- ① FOR 918, USE PART NO. 10706 (TORQUE TUBE, 19")
- ② FOR 918, USE PART NO. 01066 (TINE COVER, 918)
- ③ FOR 918, USE PART NO. 03040-51 (DECAL, "918")
- ④ FOR 918, USE PART NO. 11281 (TINE SHAFT, 918)
- ⑤ PART NO. 05063-24 IS A SET OF 24 PIECES.
- ⑥ PART NO. 03196 R1-12 IS A SET OF 12 PIECES.
- ⑦ PART NO. 05074-24 IS A SET OF 24 PIECES.
- ⑧ REFERENCE DWG. 10144 FOR INDIVIDUAL PARTS.
- ⑨ 03926, O-RING INCLUDED WITH TINE MOTOR



BARRETO

TITLE: TINE SECTION

16" OR 18" DIGGING WIDTH

PRODUCT LINE: 916 & 918 TILLER DATE: 4/26/07

SCALE: 1:9.2

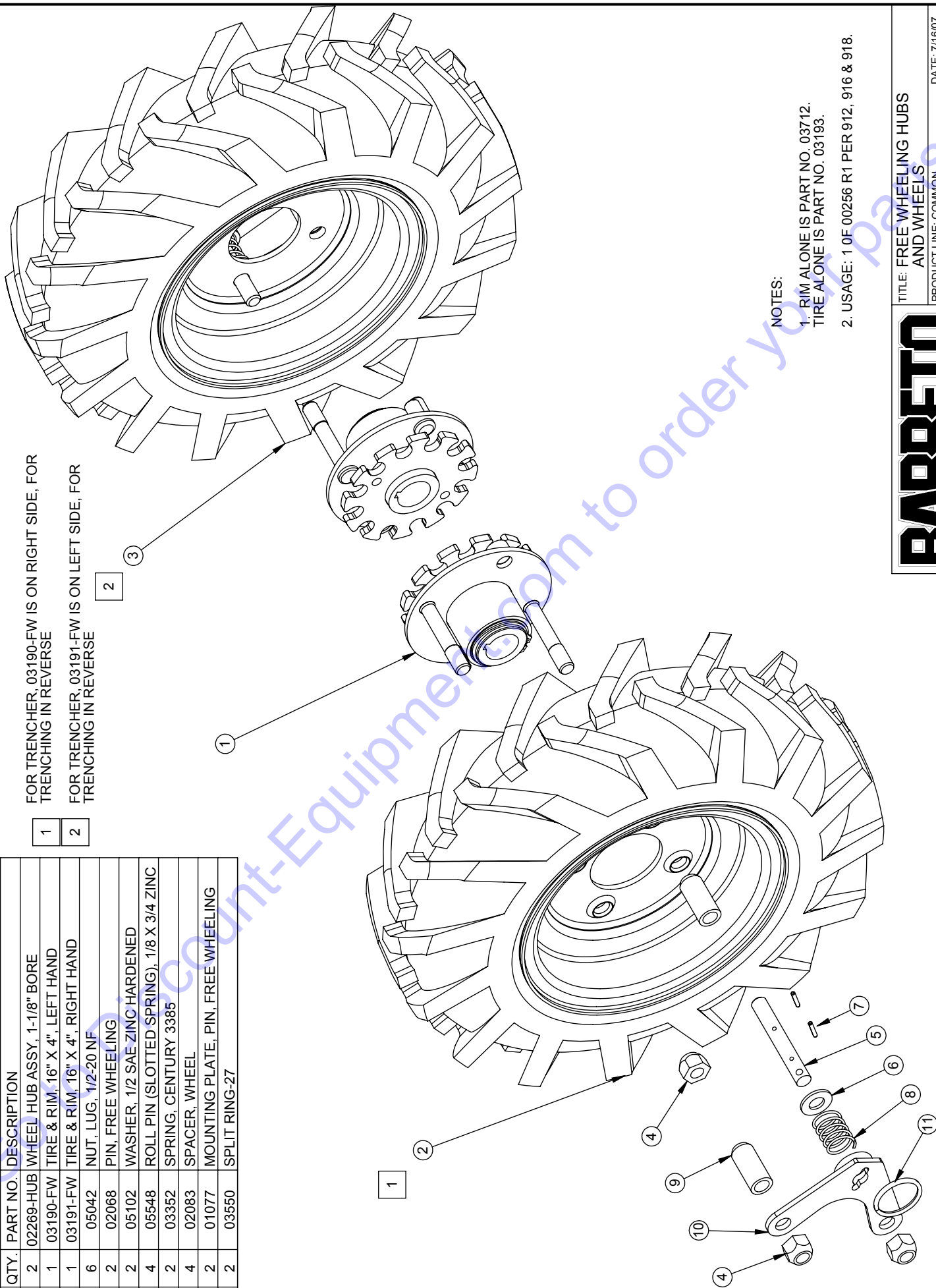
SHEET 1 OF 1

DWG# 00253 R2

| REF QTY. | PART NO. | DESCRIPTION |
|----------|-----------|---|
| 1 | 02269-HUB | WHEEL HUB ASSY, 1-1/8" BORE |
| 2 | 03190-FW | TIRE & RIM, 16" X 4", LEFT HAND |
| 3 | 03191-FW | TIRE & RIM, 16" X 4", RIGHT HAND |
| 4 | 05042 | NUT, LUG, 1/2-20 NF |
| 5 | 02068 | PIN, FREE WHEELING |
| 6 | 05102 | WASHER, 1/2 SAE ZINC HARDENED |
| 7 | 05548 | ROLL PIN (SLOTTED SPRING), 1/8 X 3/4 ZINC |
| 8 | 03352 | SPRING, CENTURY 3385 |
| 9 | 02083 | SPACER, WHEEL |
| 10 | 01077 | MOUNTING PLATE, PIN, FREE WHEELING |
| 11 | 03550 | SPLIT RING-27 |

1 FOR TRENCHER, 03190-FW IS ON RIGHT SIDE, FOR TRENCHING IN REVERSE

2 FOR TRENCHER, 03191-FW IS ON LEFT SIDE, FOR TRENCHING IN REVERSE



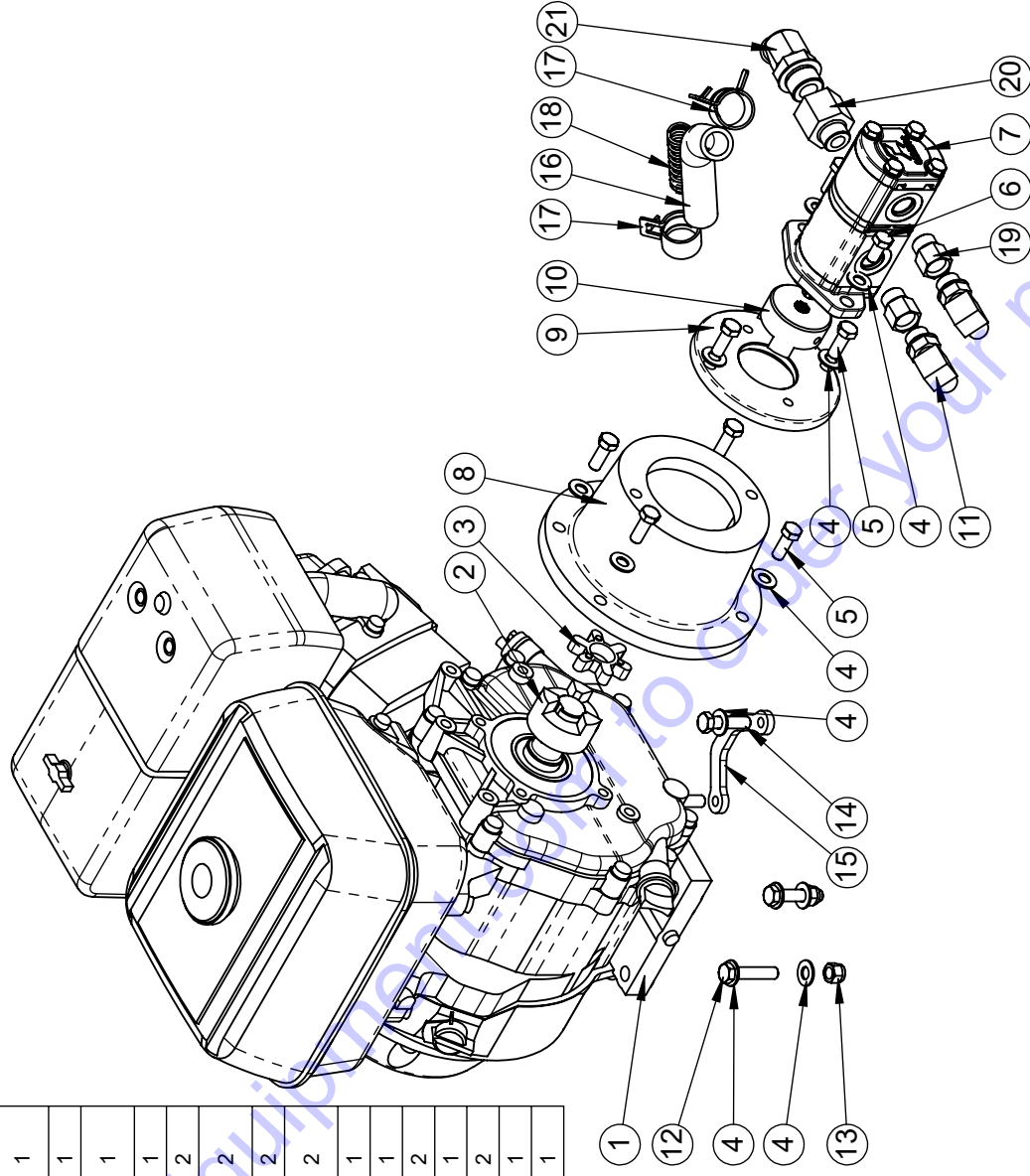
NOTES:
 1. RIM ALONE IS PART NO. 03712.
 TIRE ALONE IS PART NO. 03193.
 2. USAGE: 1 OF 00256 R1 PER 912, 916 & 918.

BARRETO

TITLE: FREE WHEELING HUBS AND WHEELS
 PRODUCT LINE: COMMON DATE: 7/16/07
 SCALE: 1:4 DWG# 00256 R1
 SHEET 1 OF 1

| | |
|--------------|------------|
| RELEASE DATE | 11/29/2017 |
| REVISED DATE | 03/16/2018 |
| REVISION # | 1 |

| ITEM NO. | PART NUMBER | DESCRIPTION | QTY. |
|----------|-------------|---|------|
| 1 | 07006 | HONDA GX270 ENGINE | 1 |
| 2 | 03023 | JAW COUPLER, 1" BORE L095 | 1 |
| 3 | 03022 | SPIDER, RUBBER | 1 |
| 4 | 05101 | WASHER, 3/8 SAE ZINC | 14 |
| 5 | 05059 | HH CAP SCREW, 3/8-16 NC X 1 G5 ZINC | 7 |
| 6 | 05202 | HH CAP SCREW, 3/8-24 NF X 3/4 G5 ZINC | 1 |
| 7 | 16502 | CASAPPA PL10 PUMP 8CC, 2.5CC TANDEM | 1 |
| 8 | 02016 | PUMP ADAPTER | 1 |
| 9 | 16534 | ADAPTER, PUMP MOUNT TO CASAPPA PUMP | 1 |
| 10 | 16509 | JAW COUPLER, 1" BORE L095 | 1 |
| 11 | 04554 | FITTING, 6801-8-8 | 2 |
| 12 | 05121 | HH CAP SCREW, 3/8-16 NC X 1-3/4 G5 ZINC | 2 |
| 13 | 05073 | NUT, NYLOCK, 3/8-16 NC ZINC | 2 |
| 14 | 05092 | HH CAP SCREW, 3/8-16 NC X 1-1/2 G5 ZINC | 2 |
| 15 | 16571 | BOLT PLATE | 1 |
| 16 | 16560 | PUMP SUCTION HOSE | 1 |
| 17 | 05008 | CLAMP, 1" HOSE, CTB-29 | 2 |
| 18 | 16513 | SPRING-CENTURY 11141 | 1 |
| 19 | 04529 | FITTING, 6410-8-6 | 2 |
| 20 | 04231 | FITTING, 6410-10-12 | 1 |
| 21 | 10362 | FITTING, 4603-12-12 | 1 |

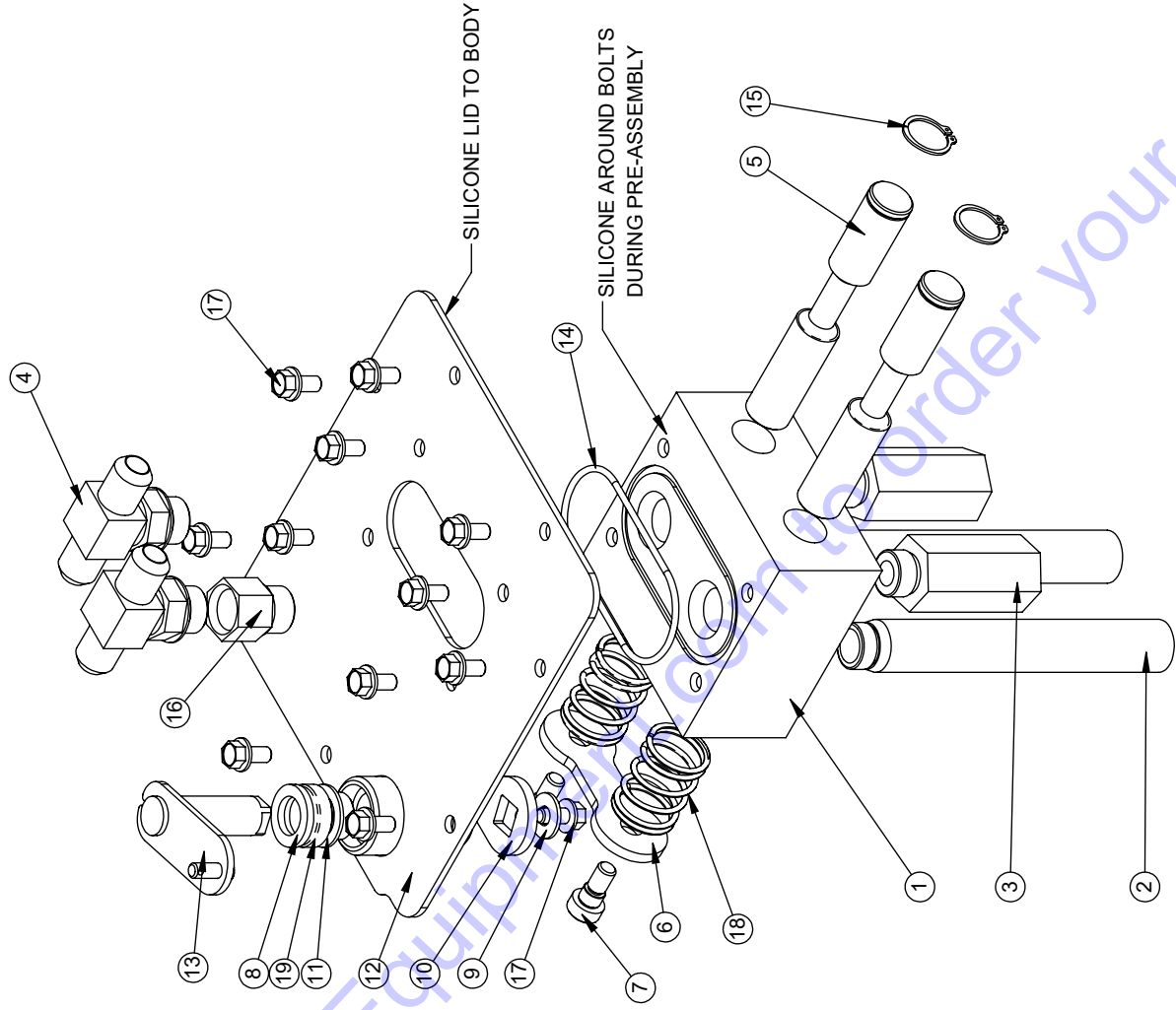


BARRETO

| |
|----------------------------|
| TITLE: 916/918 ENGINE ASSY |
| PRODUCT LINE: TILLER |
| SCALE: 1:8 |
| SHEET: 1 OF 1 |
| DWG#: 00610 |

| | |
|--------------|------------|
| RELEASE DATE | 10/25/2017 |
| REVISED DATE | NEW |
| REVISION # | 0 |

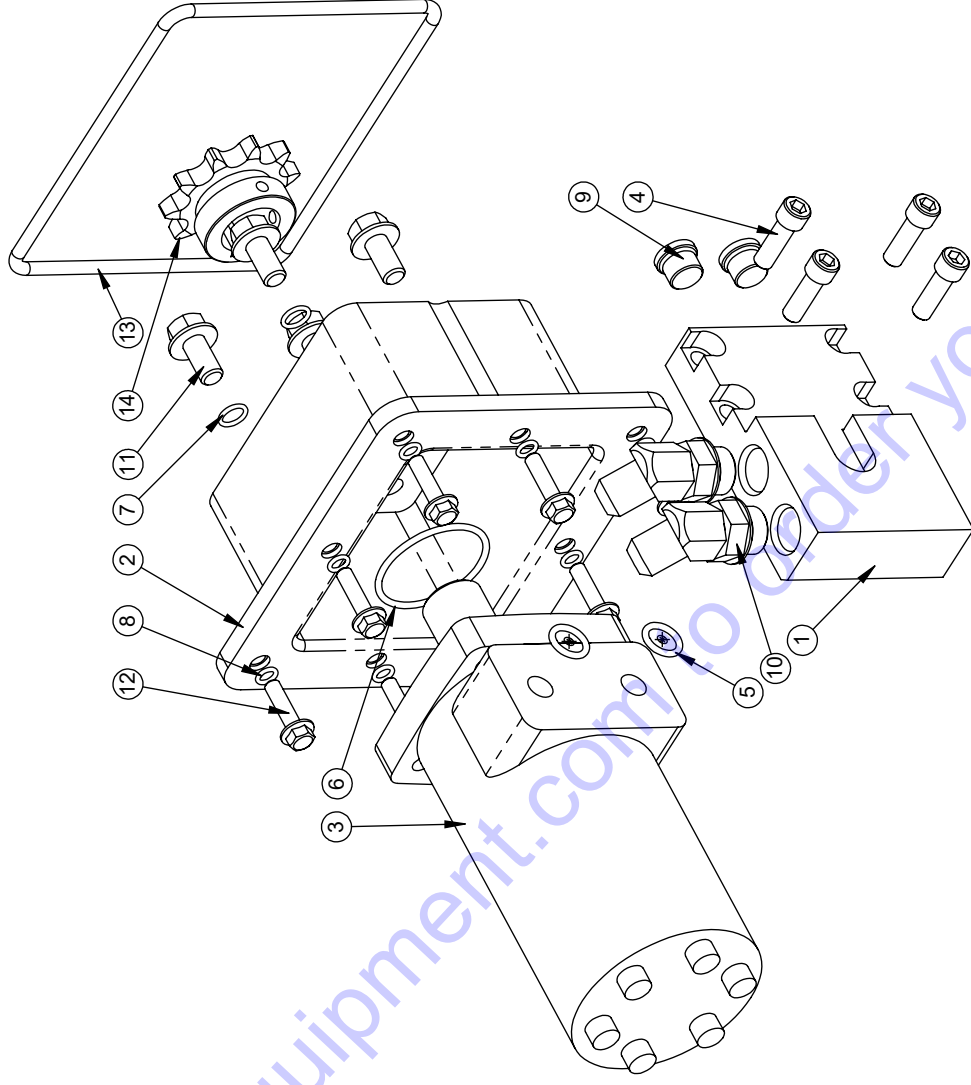
| ITEM NO. | PART NUMBER | DESCRIPTION | QTY. |
|----------|-------------|-------------------------------------|------|
| 1 | 16514 | TWIN DUMP VALVE BODY | 1 |
| 2 | 10481 | RETURN TUBE, #8 O-RING | 2 |
| 3 | 04008-DO | RELIEF VALVE, 2750 POUND, O-RING | 2 |
| 4 | 04017 | FITTING, 6803-8-8-8 | 2 |
| 5 | 16515 | DUMP VALVE SPOOL | 2 |
| 6 | 16517 | SPOOL LINK | 1 |
| 7 | 05351 | SHSB, 3/8S X 1/4SL X 5/16 NC, BK OX | 2 |
| 8 | 03061 | FELT WASHER, 5/8 X 1 X 1/8 | 1 |
| 9 | 05078 | WASHER, 1/4 USS ZINC | 1 |
| 10 | 16519 | DUMP VALVE PUSH PLATE | 1 |
| 11 | 03060 | BUSHING, IGUS MFI-1012-06 | 2 |
| 12 | 16518 | TILLER LID | 1 |
| 13 | 16520 | DUMP VALVE ARM | 1 |
| 14 | 16521 | O-RING 0.103" DIA X 2.75" ID | 1 |
| 15 | 05216 | SNAP RING, 3/4 EXTERNAL | 2 |
| 16 | 04529 | FITTING, 6410-8-6 | 1 |
| 17 | 05051 | WHIZ-LOCK 1/4 - 20 X 1/2 | 12 |
| 18 | 16516 | SPRING- CENTURY A13-69 | 2 |
| 19 | 03020 | SEAL | 1 |



BARRETO

| |
|--------------------------------|
| TITLE: DUMP VALVE/LID ASSEMBLY |
| PRODUCT LINE:TILLER |
| SCALE: 1:4 |
| SHEET 1 OF 1 |
| DWG# 00612 |

| ITEM NO. | PART NUMBER | DESCRIPTION | QTY. |
|----------|-------------|---|------|
| 1 | 16557 | MANIFOLD, WHEEL DRIVE MOTOR | 1 |
| 2 | 16556 | MOTOR MOUNT | 1 |
| 3 | 16508 | EATON H-SERIES MOTOR 17.9CI | 1 |
| 4 | 05572 | SH CAP SCREW, 5/16-18 NC X 1 ZINC | 4 |
| 5 | 03926 | O-RING, 2-112N90, 11/16 OD X 3/32 SECTION | 2 |
| 6 | 03238 | O-RING, 2-132, 1-15/16 OD X 3/32 SECTION | 1 |
| 7 | 03218 | O-RING, 2-012, 1/2 OD X 1/16 SECTION | 4 |
| 8 | 10623 | O-RING, 2-010, 3/8 OD X 1/16 SECTION | 8 |
| 9 | 03302 | FITTING, 6409-6 PLUG | 2 |
| 10 | 04210 | FITTING, 6802-8-8 | 2 |
| 11 | 05187 | HHFS 3/8-16 X 3/4, G5, ZN | 4 |
| 12 | 05404 | HHFS 1/4-20 X 1, G5, ZN | 8 |
| 13 | 16555 | O-RING, MOTOR MOUNT | 1 |
| 14 | 02014 | SPROCKET, #50 10 TOOTH | 1 |



| | |
|--------------|------------|
| RELEASE DATE | 10/25/2017 |
| REVISED DATE | NEW |
| REVISION # | 0 |

BARRETO

TITLE: DRIVE MOTOR ASSEMBLY

PRODUCT LINE:TILLER

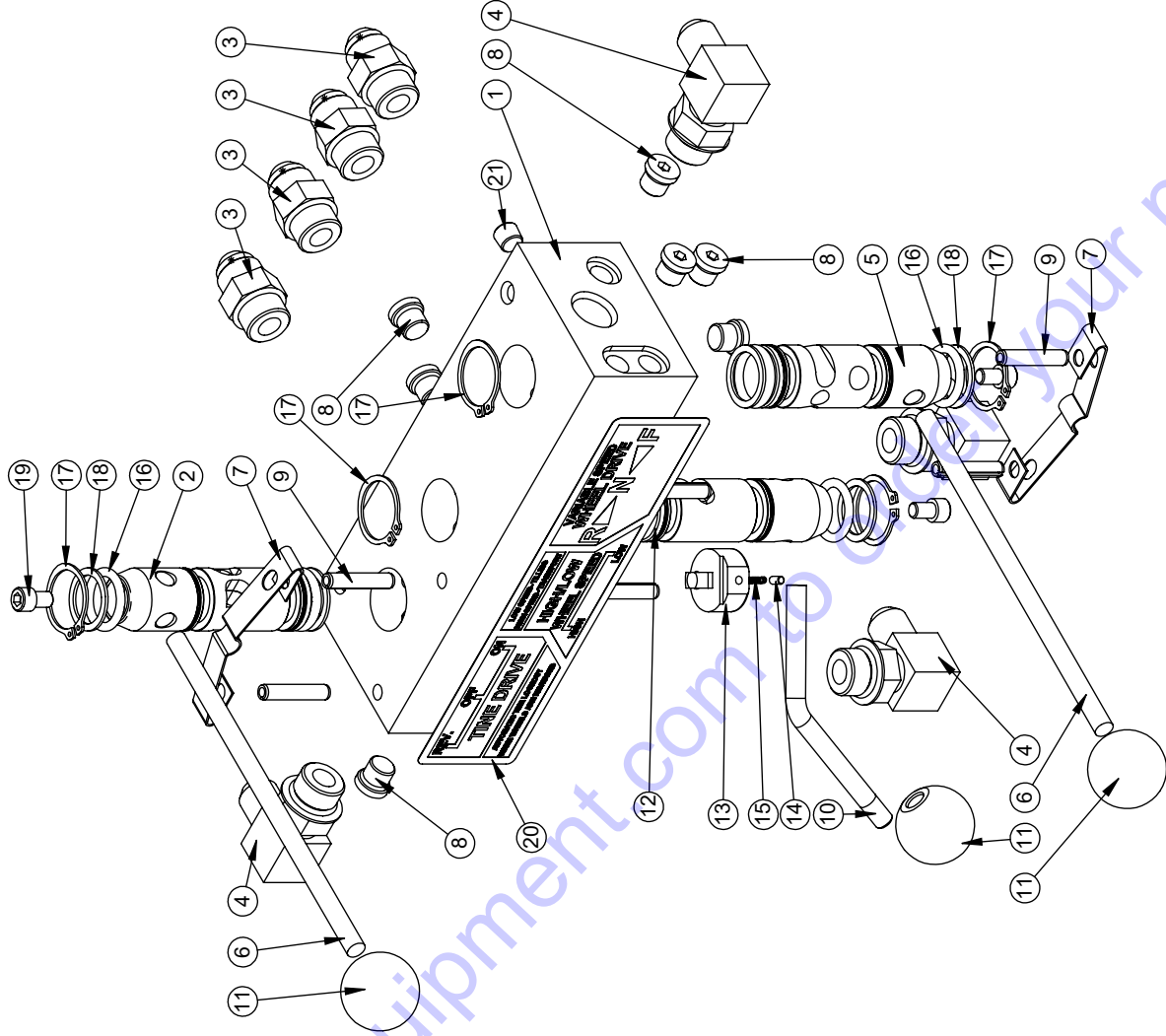
SCALE: 1:4

SHEET 1 OF 1

DWG# 00613

| | |
|--------------|------------|
| RELEASE DATE | 10/26/2017 |
| REVISED DATE | 03/01/2018 |
| REVISION # | 1 |

| ITEM NO. | PART NUMBER | DESCRIPTION | QTY. |
|----------|-------------|---|------|
| 1 | 16525 | TILLER CONTROL BLOCK | 1 |
| 2 | 04015-D | VALVE SPOOL, TINES (ORDER 04010-K) | 1 |
| 3 | 04520 | FITTING, 6400-8-8 | 4 |
| 4 | 04554 | FITTING, 6801-8-8 | 4 |
| 5 | 04015-C | VALVE SPOOL, WHEEL DRIVE (ORDER 04010-K) | 1 |
| 6 | 02017 | HANDLE, 5/16 X 7 | 2 |
| 7 | 03027 | DETENT SPRING | 2 |
| 8 | 03300 | FITTING, 6409-4 PLUG | 7 |
| 9 | 05200 | ROLL PIN (SLOTTED SPRING), 1/4 X 1-1/4 ZINC | 6 |
| 10 | 16528 | FLOW DIVIDER LEVER | 1 |
| 11 | 03026 | KNOB, 5/16-NC | 3 |
| 12 | 16529 | VALVE SPOOL, SWITCH VALVE | 1 |
| 13 | 16530 | DETENT BLOCK | 1 |
| 14 | 16531 | DOWEL - .125" X .250" | 1 |
| 15 | 16532 | SPRING, CENTURY NN-7 | 1 |
| 16 | 03002 | O-RING, 2-210, 1" OD X 1/8 SECTION | 6 |
| 17 | 05010 | SNAP RING, 1" EXTERNAL | 6 |
| 18 | 03025 | BACK-UP RING, 1" TEFLON | 6 |
| 19 | 05573 | SH CAP SCREW, 1/4-20 NC X 3/8 ZINC | 3 |
| 20 | 16535 | CONTROL BLOCK (HIGH/LOW) | 1 |
| 21 | 05023 | PIPE PLUG, 1/8" | 1 |



BARRETO

TITLE: CONTROL BLOCK ASSEMBLY

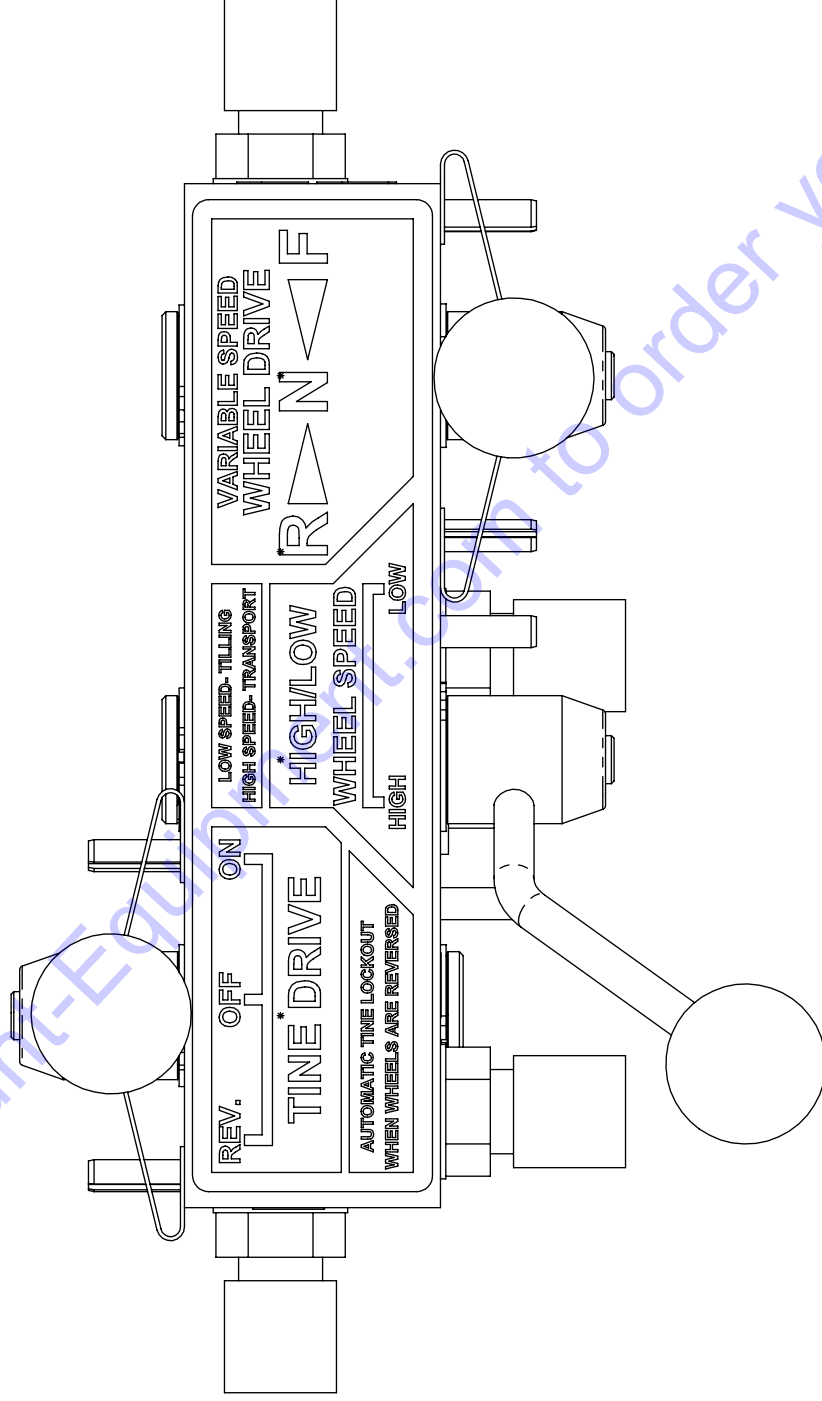
PRODUCT LINE:TILLER

SCALE: 1:4

SHEET 1 OF 3

DWG# 00614

Go to Discount-Equipment.com to order your parts



TITLE: CONTROL BLOCK ASSEMBLY

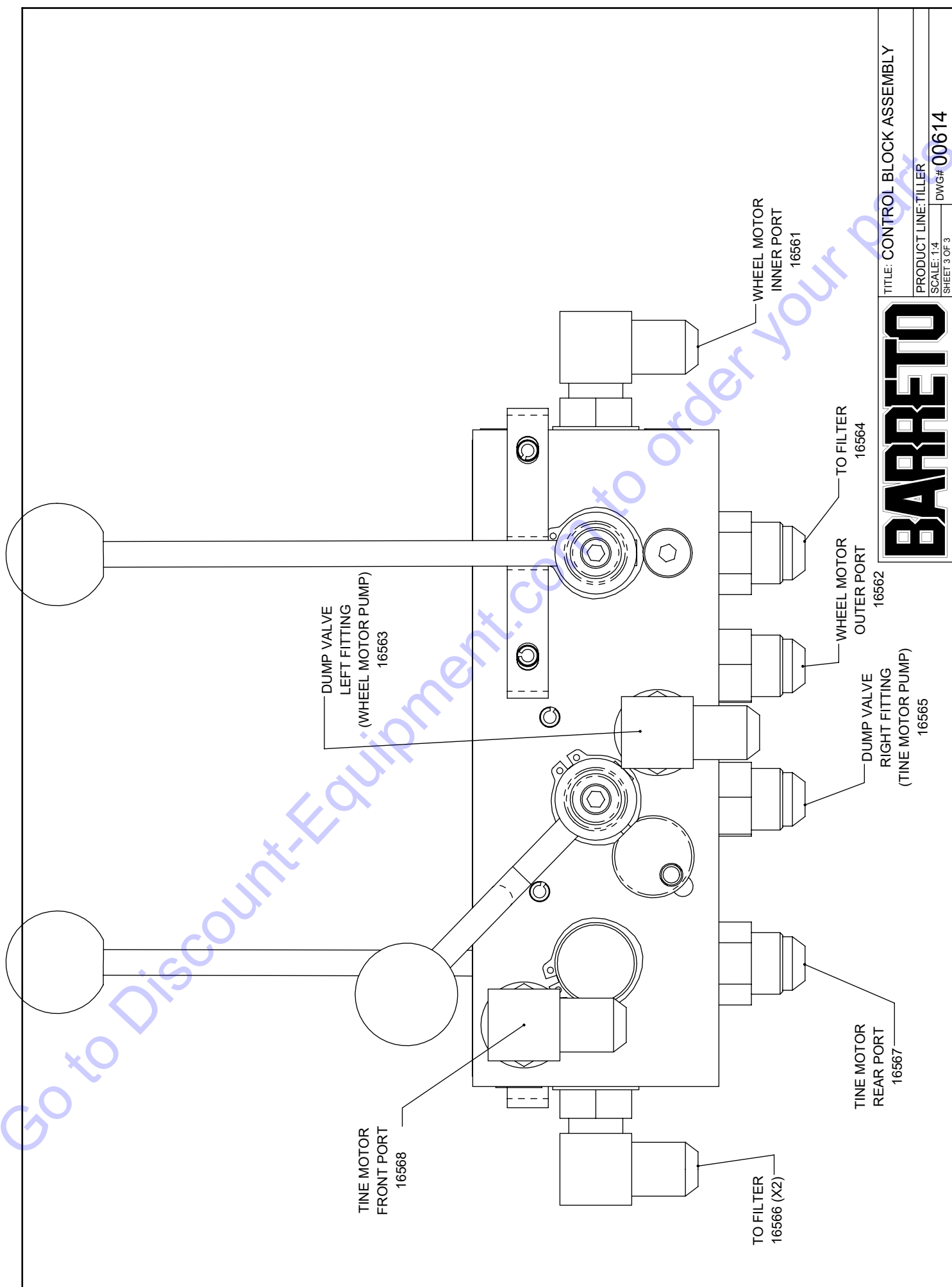
PRODUCT LINE:TILLER

SCALE: 1:4

DWG# 00614

SHEET 2 OF 3

BARRETO



BARRETO

TITLE: CONTROL BLOCK ASSEMBLY

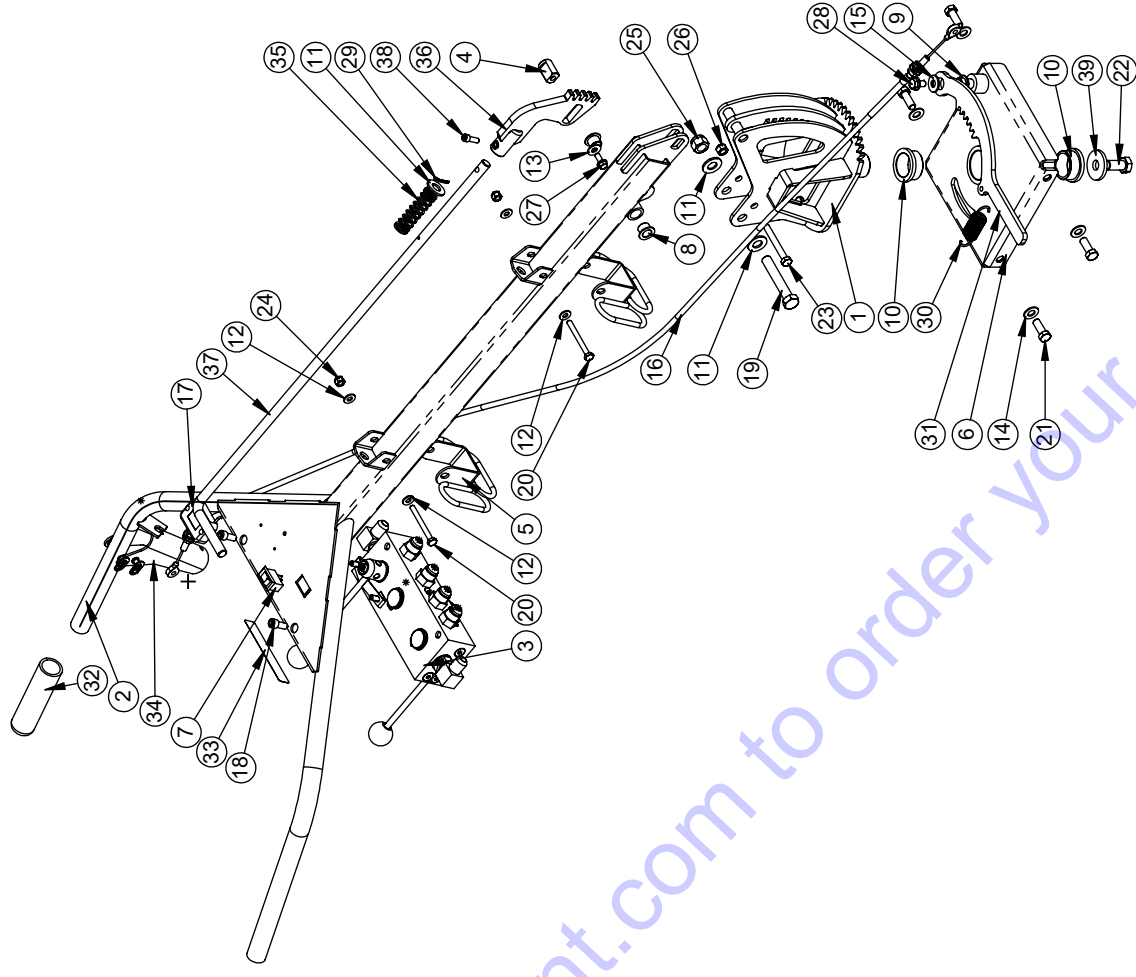
PRODUCT LINE:TILLER

SCALE: 1:4
SHEET: 3 OF 3

DWG# 00614

| | |
|--------------|------------|
| RELEASE DATE | 10/26/2017 |
| REVISED DATE | NEW |
| REVISION # | 0 |

| ITEM NO. | PART NUMBER | DESCRIPTION | QTY. |
|----------|-------------|--|------|
| 1 | 16503 | HANDLEBAR PIVOT | 1 |
| 2 | 16545 | HANDLE BARS R1 | 1 |
| 3 | 00614 | CONTROL BLOCK ASSEMBLY | 1 |
| 4 | 16544 | SLIDE PIN | 1 |
| 5 | 16542 | HOSE KEEPER-918 | 2 |
| 6 | 16504 | PIVOT MOUNT | 1 |
| 7 | 06420 | ROCKER SWITCH, IGNITION OFF/ON | 1 |
| 8 | 03501 | BUSHING, IGUS MFI-0810-08 | 2 |
| 9 | 10100 | BUSHING, IGUS RFI-0810-06 | 1 |
| 10 | 10498 | BUSHING, IGUS MFI-2024-12 | 2 |
| 11 | 05102 | WASHER, 1/2 SAE ZINC HARDENED | 3 |
| 12 | 05081 | WASHER, 1/4 SAE ZINC | 4 |
| 13 | 05078 | WASHER, 1/4 USS ZINC | 1 |
| 14 | 05101 | WASHER, 3/8 SAE ZINC | 4 |
| 15 | 10615 | WASHER, 5/16 USS ZINC | 1 |
| 16 | 16510 | CABLE, ACTUATOR | 1 |
| 17 | 03009-R1 | HOUR METER, WITH FLASH ALERT | 1 |
| 18 | NEW | SH CAP SCREW, 5/16-18 NC X 3/4 PLAIN | 2 |
| 19 | 05093 | HH CAP SCREW, 1/2-13 NC X 3 G5 ZINC | 1 |
| 20 | 05123 | HH CAP SCREW, 1/4-20 NC X 2-1/2 G5 ZINC | 2 |
| 21 | 05059 | HH CAP SCREW, 3/8-16 NC X 1 G5 ZINC | 4 |
| 22 | 05067 | HH CAP SCREW, 1/2-13 NC X 1 G5 ZINC | 1 |
| 23 | 05568 | HH CAP SCREW, 5/16-18 NC X 2-1/2 G5 ZINC | 1 |
| 24 | 05096 | NUT, NYLOCK, 1/4-20 NC ZINC | 2 |
| 25 | 05098 | NUT, NYLOCK, 1/2-13 NC ZINC | 1 |
| 26 | 05273 | NUT, NYLOCK, 5/16-18 NC ZINC | 1 |
| 27 | 05069 | WHIZ-LOCK 1/4 - 20 X 5/8 | 1 |
| 28 | 05169 | WHIZ-LOCK 5/16 - 18 X 1/2 | 1 |
| 29 | 05222 | COTTER PIN 1/8 X 3/4 | 1 |
| 30 | 16506 | SPRING- CENTURY 320 | 1 |
| 31 | 16505 | LOCK HANDLE | 1 |
| 32 | 03032-01 | GRIP, 1 X 5 (P/N 03032 IS A PAIR) | 2 |
| 33 | 16536 | WHEEL RANGE | 1 |
| 34 | 03029 | LEVER ASSEMBLY (COMPLETE) | 1 |
| 35 | 16513 | SPRING- CENTURY 11141 | 1 |
| 36 | 16512 | ADJUSTMENT COG | 1 |
| 37 | 16511 | ADJUSTMENT BAR SHAFT | 1 |
| 38 | 05611 | SH CAP SCREW, 1/4-20 NC X 3/4 ZINC | 1 |
| 39 | 11027 | SHAFT WASHER | 1 |



BARRETO

TITLE: HANDLEBAR ASSEMBLY

PRODUCT LINE:TILLER

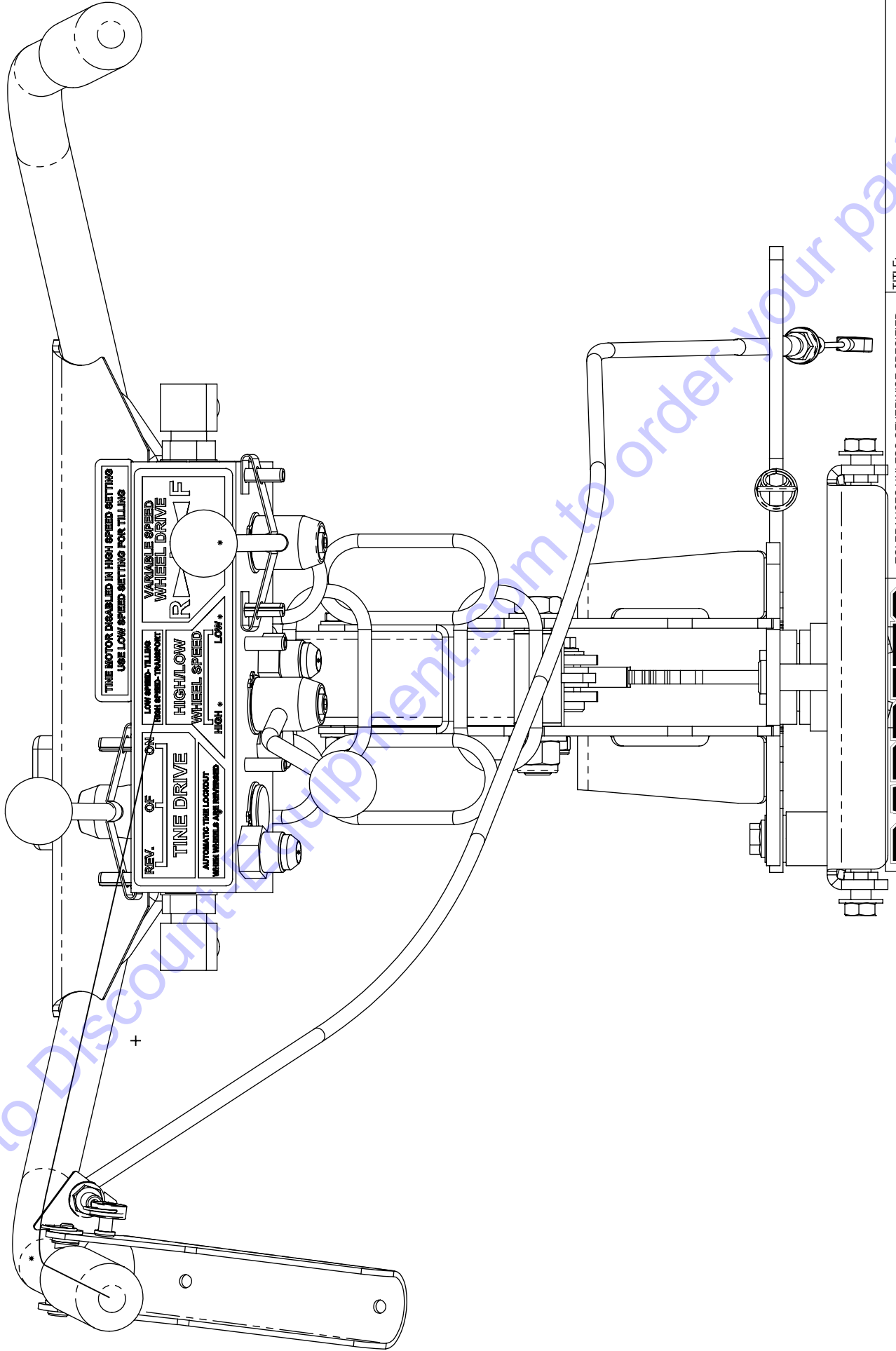
SCALE: 1:24

SHEET 1 OF 2

DWG# 00615

66498 HWY 203
LA GRANDE, OR 97850
(541) 963-7348

BARRETO

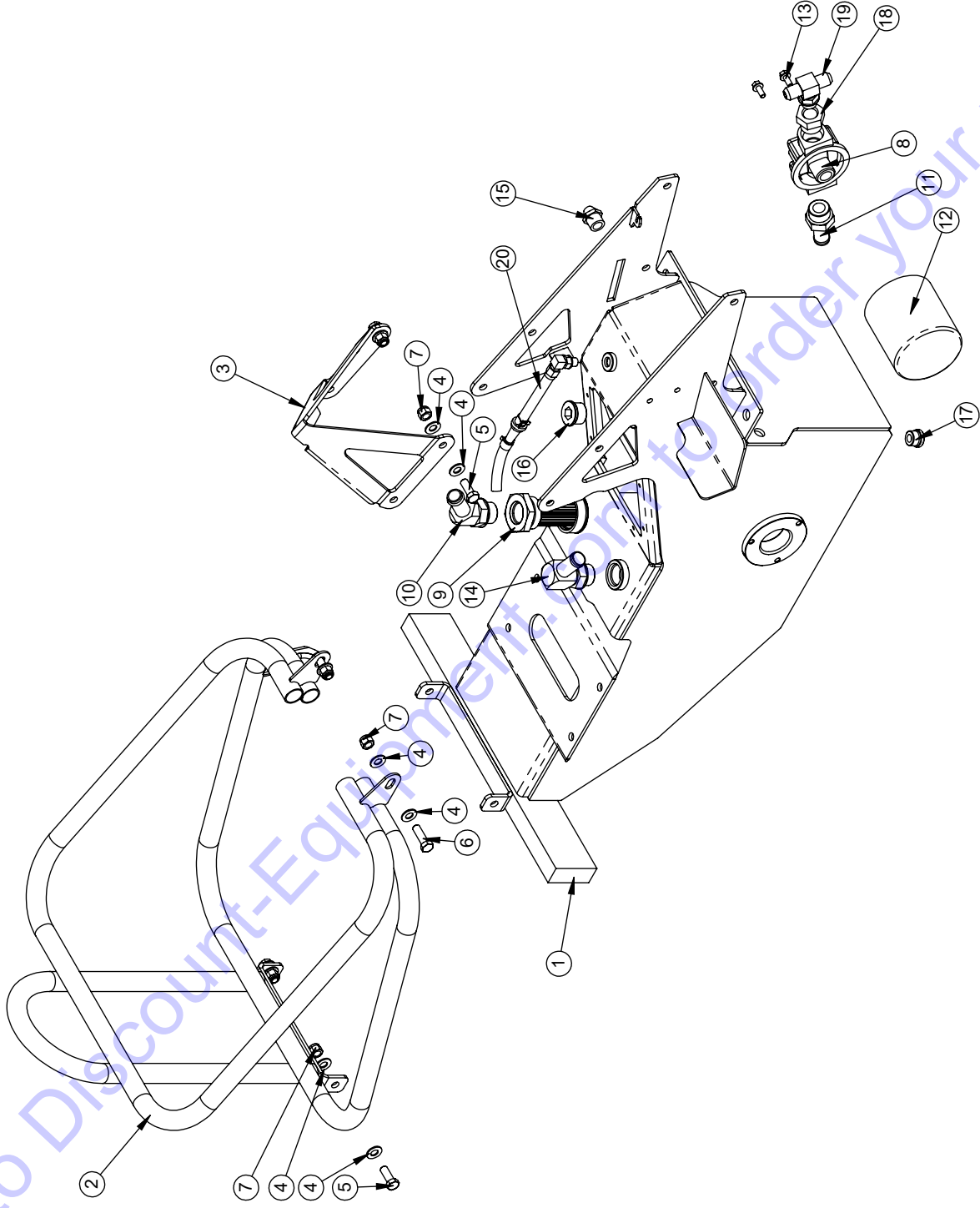


TITLE: HANDLEBAR ASSEMBLY
PRODUCT LINE: TILLER
SCALE: 1:3
SHEET 2 OF 2
DWG# 00615

TOLERANCES UNLESS OTHERWISE SPECIFIED
FRACTIONS:
>= 1/16 = ±1/16
1/32 = ±1/32
1/64 = ±1/64
DECIMALS:
X = ±.1
XX = ±.03
XXX = ±.005
ANGLES:
±2°

BARRETO

| | |
|--------------|------------|
| RELEASE DATE | 10/27/2017 |
| REVISED DATE | NEW |
| REVISION # | 0 |



BARRETO

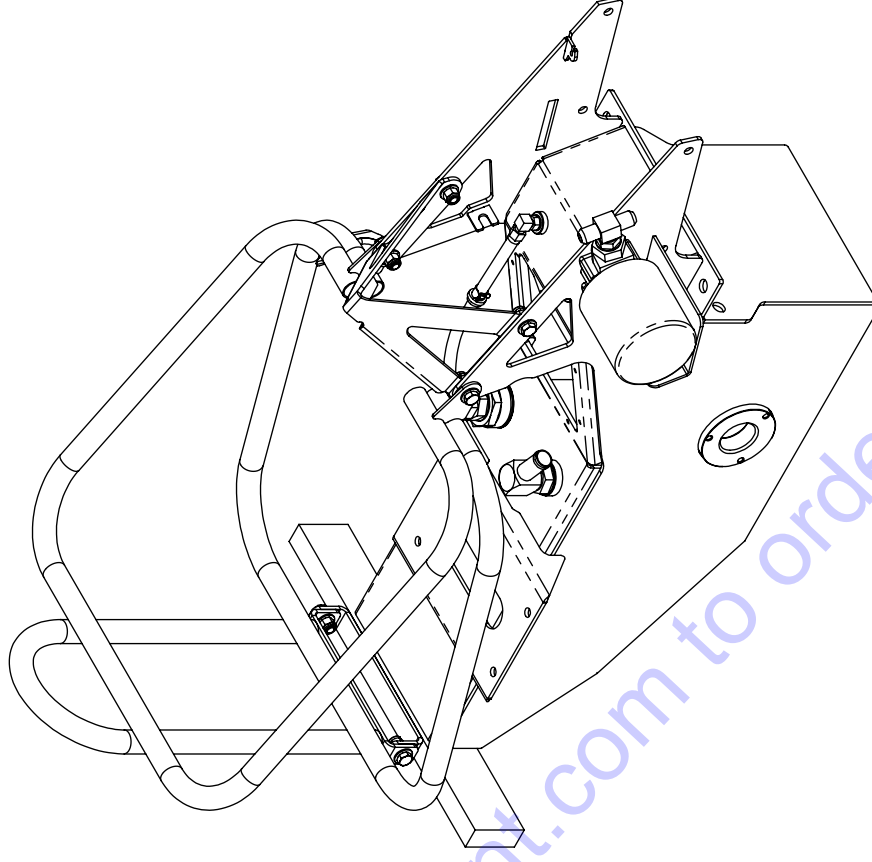
TITLE: BODY ASSEMBLY

PRODUCT LINE:

SCALE: 1:16
SHEET 1 OF 2

DWG# 00616

| ITEM NO. | PART NUMBER | DESCRIPTION | QTY. |
|----------|-------------|---|------|
| 1 | 16501 | TILLER BODY | 1 |
| 2 | 16524 | ENGINE GUARD, 918 R1 | 1 |
| 3 | 16539 | LIFT HOOK | 1 |
| 4 | 05101 | WASHER, 3/8 SAE ZINC | 12 |
| 5 | 05059 | HH CAP SCREW, 3/8-16 NC X 1 G5 ZINC | 4 |
| 6 | 05171 | HH CAP SCREW, 3/8-16 NC X 1-1/4 G8 ZINC | 2 |
| 7 | 05073 | NUT, NYLOCK, 3/8-16 NC ZINC | 6 |
| 8 | 04403 | FILTER HEAD, #12 O-RING | 1 |
| 9 | 10247 | SUMP SCREEN #20 EXT #12 INT O-RING | 1 |
| 10 | 10362 | FITTING, 4603-12-12 | 1 |
| 11 | 04219 | FITTING, 4604-12-12 | 1 |
| 12 | 03951 | FILTER, HYDRAULIC OIL, WITH BY-PASS | 1 |
| 13 | 05069 | WHIZ-LOCK 1/4 - 20 X 5/8 | 2 |
| 14 | 04202 | FITTING, 4601-12-12 | 1 |
| 15 | 03503 | SIGHT GAUGE | 1 |
| 16 | 10526 | FITTING, 6409-12 PLUG | 1 |
| 17 | 10361 | FITTING, 6409-8 PLUG | 1 |
| 18 | 04222 | FITTING, 6410-12-8 | 1 |
| 19 | 04017 | FITTING, 6803-8-8-8 | 1 |
| 20 | 10189 R2 | BREATHER HOSE ASSEMBLY | 1 |



BARRETO

TITLE: BODY ASSEMBLY

PRODUCT LINE:

SCALE: 1:16

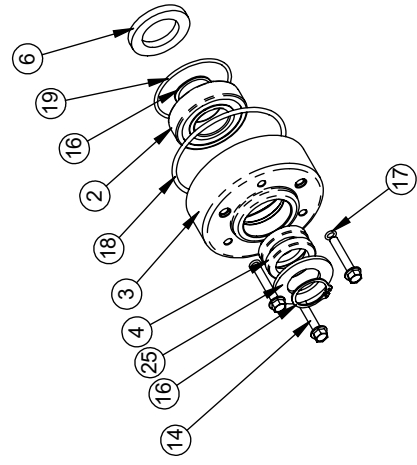
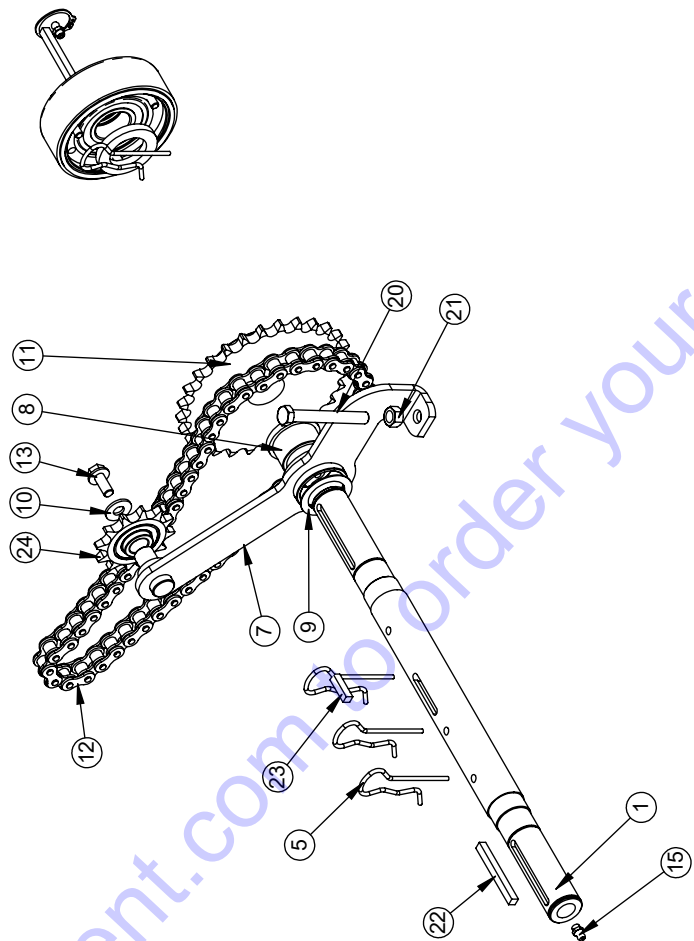
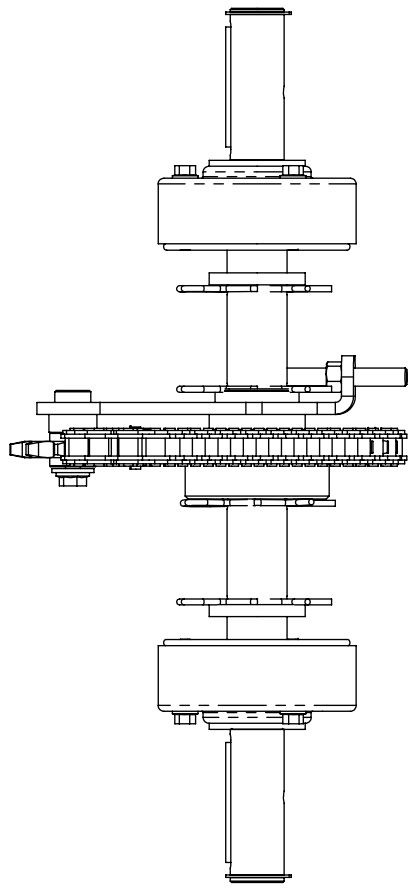
SHEET 2 OF 2

DWG# 00616

Order your parts at www.BarretoEquipment.com to order your parts

| | |
|--------------|------------|
| RELEASE DATE | 11/28/2017 |
| REVISED DATE | NEW |
| REVISION # | 0 |

| ITEM NO. | PART NUMBER | DESCRIPTION | QTY. |
|----------|-------------|--|------|
| 1 | 16537 | 918 AXLE | 1 |
| 2 | 03280 | BALL BEARING, SKF 6206 | 2 |
| 3 | 10174 | AXLE BEARING HOUSING | 2 |
| 4 | 03012 | SEAL, AXLE | 4 |
| 5 | 05033 | HAIR SPRING COTTER P2 | 4 |
| 6 | 16538 | AXLE SPACER | 2 |
| 7 | 16553 | CHAIN IDLER ARM | 1 |
| 8 | 10277 | BUSHING, IGUS JFI-2024-16 | 1 |
| 9 | 03202 | THRUST WASHER, 1.25 X 1.75 X .030 | 1 |
| 10 | 10615 | WASHER, 5/16 USS ZINC | 1 |
| 11 | 16550 | SPROCKET, #50 28 T, 1-1/8 BORE, 50BS28 | 1 |
| 12 | 16551 | CHAIN- #50 53 LINK | 1 |
| 13 | 05140 | WHIZ-LOCK 5/16 - 18 X 3/4 | 1 |
| 14 | 12113 | WHIZ-LOCK 1/4 - 20 X 1-1/2 | 6 |
| 15 | 05044 | GREASE ZERK, 1/4-28 UNF | 2 |
| 16 | 05606 | SNAP RING, 1-1/8" EXTERNAL | 4 |
| 17 | 10623 | O-RING, 2-010, 3/8 OD X 1/16 SECTION | 6 |
| 18 | 10602 | O-RING, 2-239, 3-7/8 OD X 1/8 SECTION | 2 |
| 19 | 10211 | O-RING, 2-143, 2-5/8 OD X 3/32 SECTION | 2 |
| 20 | 10344 | HHCS, 3/8-16 NC X 3 G5 ZN FULL | 1 |
| 21 | 10928 | NUT, 3/8-16 NC GRB PLAIN | 1 |
| 22 | 05199 | KEY, 1/4 X 1/4 X 2-1/2 HARDENED | 2 |
| 23 | 05318 | KEY, 1/4 X 1/4 X 1 | 1 |
| 24 | 16552 | IDLER SPROCKET | 1 |
| 25 | 03013 | FELT WASHER, 1-1/8 X 2 X 1/8 | 2 |



BARRETO

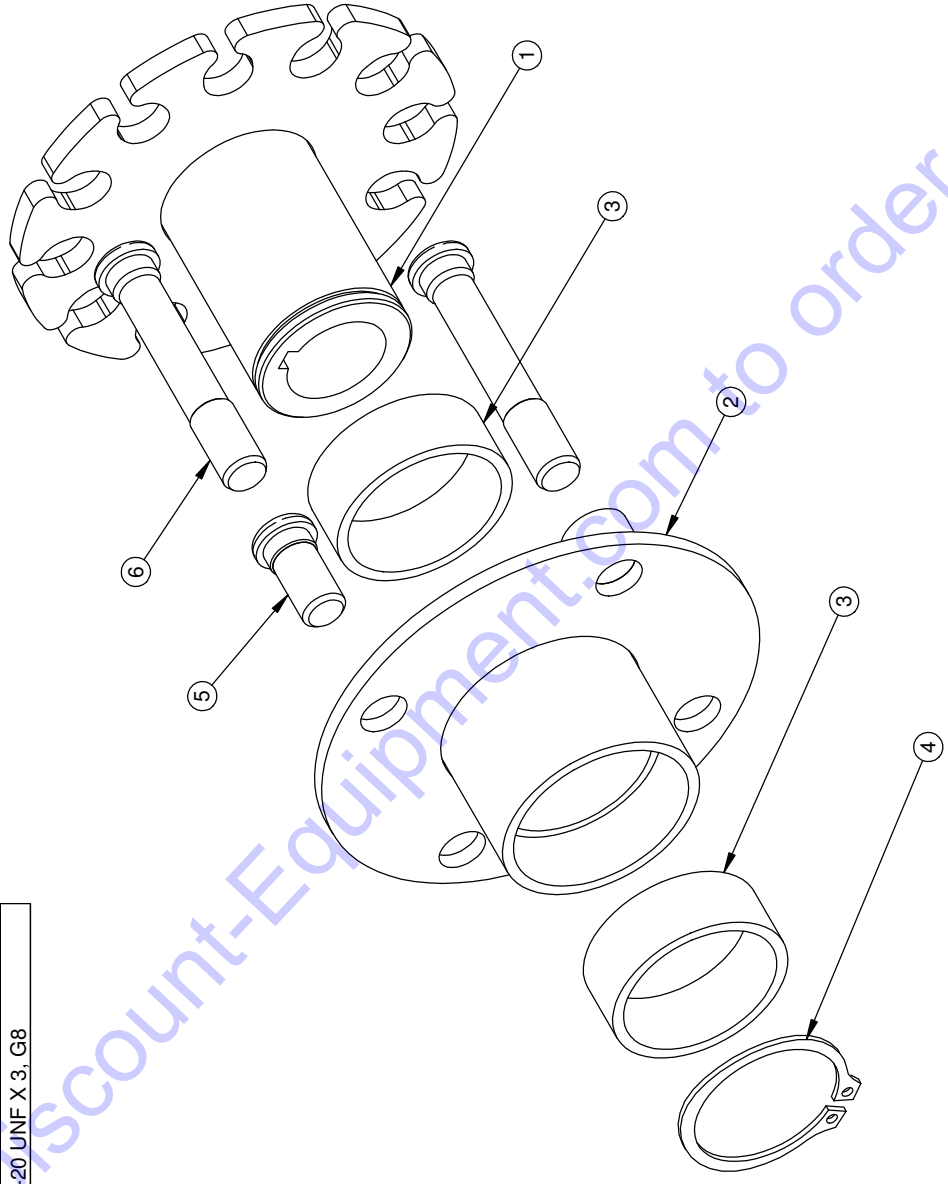
TITLE: AXLE ASSEMBLY

PRODUCT LINE:TILLER

SCALE: 1:6
SHEET 1 OF 1

DWG# 00617

| REF. QTY. | PART NO. | DESCRIPTION |
|-----------|----------|--|
| 1 | 02269 | WHEEL HUB |
| 2 | 01252 | FREE WHEEL HUB |
| 3 | 03168 | BUSHING, SLEEVE, NYLON, IGUS MSI-2832-12 |
| 4 | 05610 | SNAP RING, SH-175, 1-3/4" EXTERNAL |
| 5 | 05066 | KNURLED STUD, 1/2-20 UNF X 1, G8 |
| 6 | 05166 | KNURLED STUD, 1/2-20 UNF X 3, G8 |



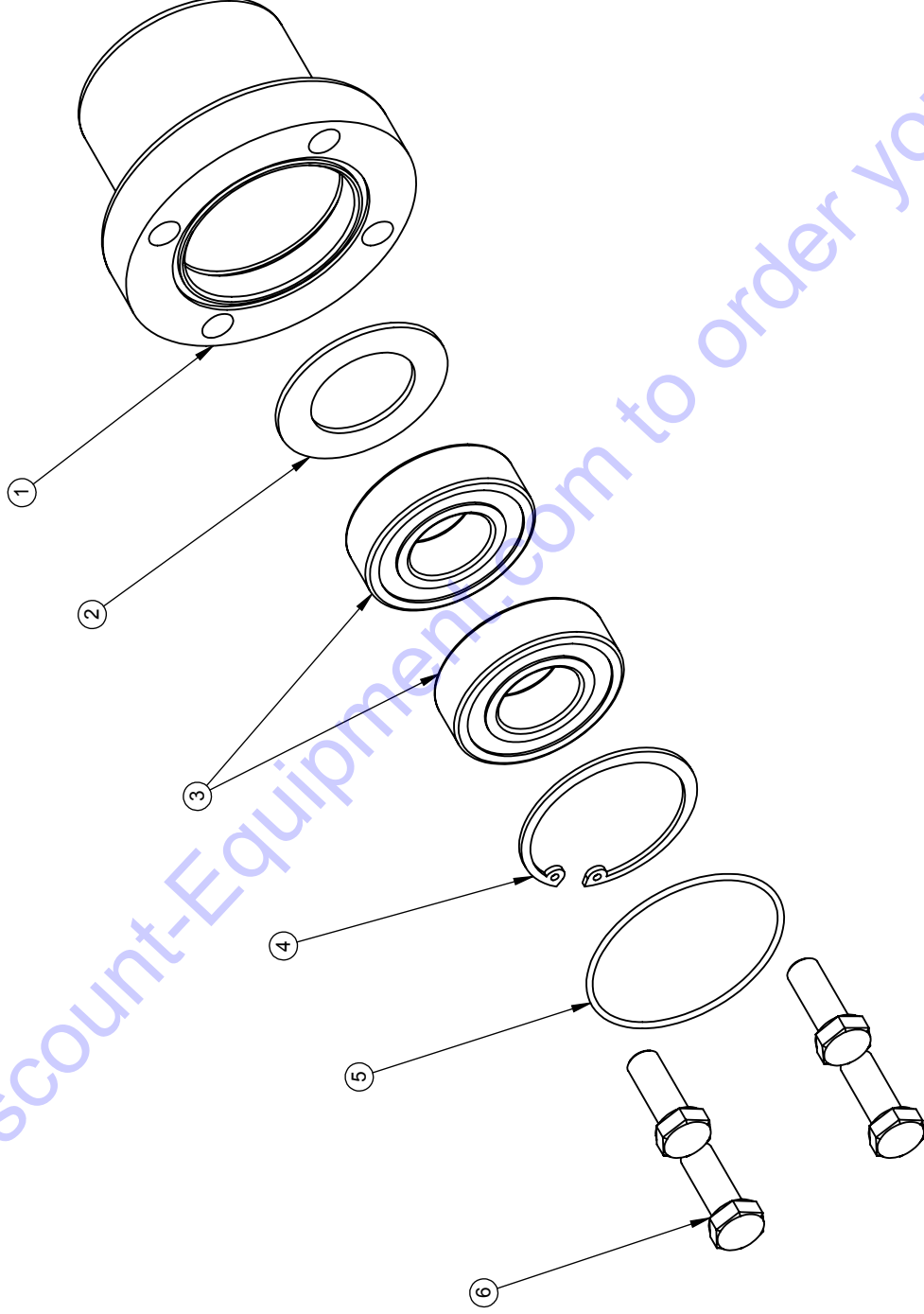
NOTES:

- 1. USAGE: 2 PER 00231 R3, 00256 R1, & 10388.
- 1 OF 00231 R3 PER 1318.
- 1 OF 00256 R1 PER 912, 916 & 918.
- 1 OF 10388 PER 1320 & 1620.



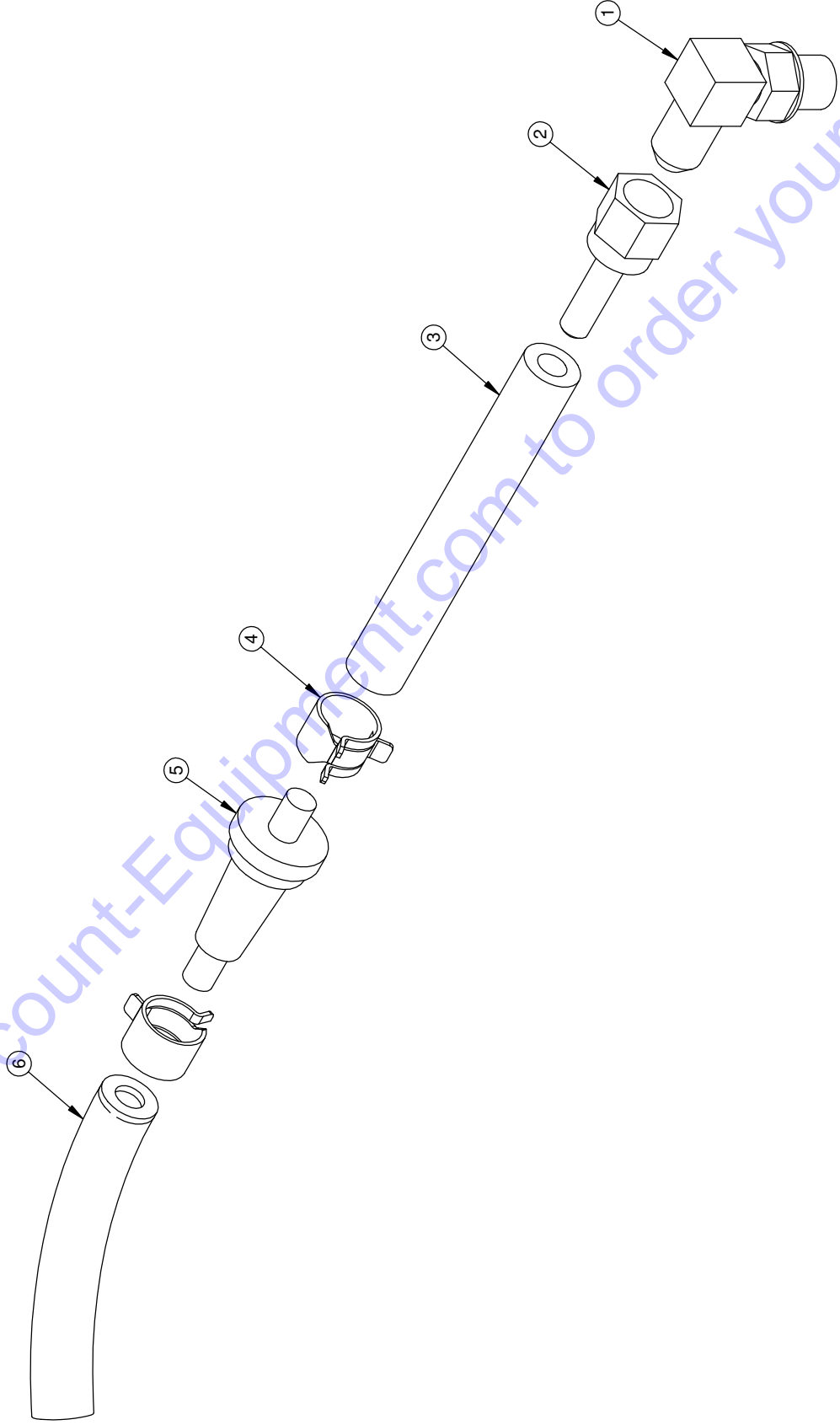
TITLE: WHEEL HUB ASSY, 1-1/8" BORE
 PRODUCT LINE: COMMON DATE: 8/6/07
 SCALE: 1:2 DWG#: 02269-HUB
 SHEET 1 OF 1

| REF | QTY. | PART NO. | DESCRIPTION |
|-----|------|----------|--|
| 1 | 1 | 10142 | OUTBOARD BEARING HOUSING, 4 BOLT |
| 2 | 1 | 01039 | SHIELD, ROLLER BEARING |
| 3 | 2 | 03043 | BALL BEARING, 6205 |
| 4 | 1 | 05024 | SNAP RING, HO-200, 2" INTERNAL |
| 5 | 1 | 03904 | O-RING, 2-035, 2-3/8 OD X 1/16 SECTION |
| 6 | 4 | 05059 | HH CAP SCREW, 3/8-16 NC X 1 G5 ZINC |



Discount-Equipment.com to order your parts

| REF. | QTY. | PART NO. | DESCRIPTION |
|------|------|----------|---|
| 1 | 1 | 04555 | FITTING, 6801-4-4 |
| 2 | 1 | 04214 | FITTING, JS-4-4, HOSE BARB 1/4 X 1/4 SWIVEL |
| 3 | 1 | 11348 | HOSE, 1/4 INCH GASOLINE, 4L5, 3-1/2" LONG |
| 4 | 2 | 03062-06 | CLAMP, 1/4" FUEL LINE |
| 5 | 1 | 04516 | BREATHER, FILTER SNAPPER 1435 |
| 6 | 1 | 11347 | HOSE, 1/4 INCH GASOLINE, 4L5, 3-1/4" LONG |



BARRETO

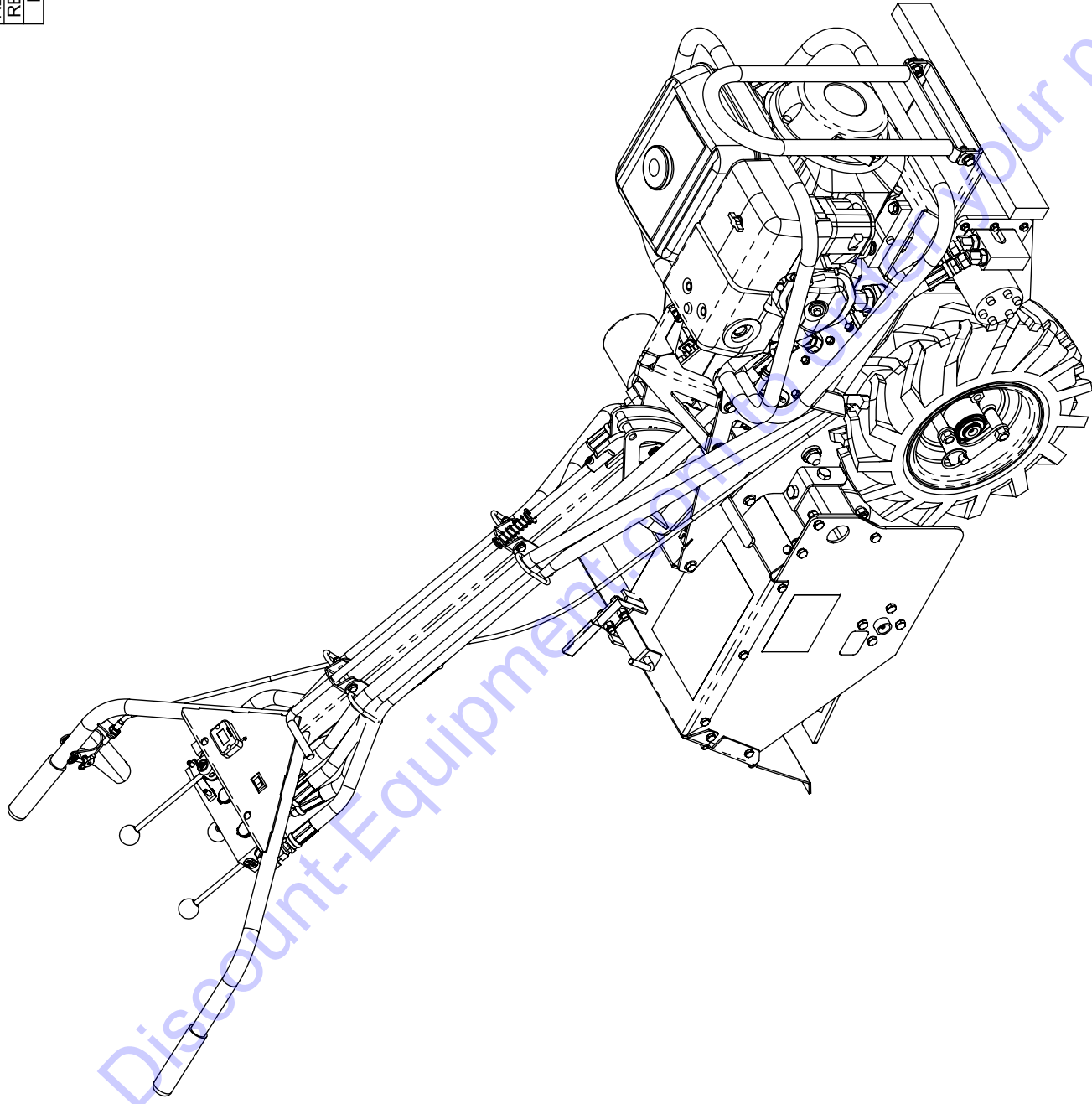
TITLE: BREATHER HOSE ASSEMBLY

PRODUCT LINE: 916 DATE: 4/26/07

SCALE: 1:1.3 DWG#: 10189 R2

SHEET 1 OF 1

| | |
|--------------|------------|
| RELEASE DATE | 12/01/2017 |
| REVISED DATE | NEW |
| REVISION # | 0 |



TITLE: 918 TILLER 2018

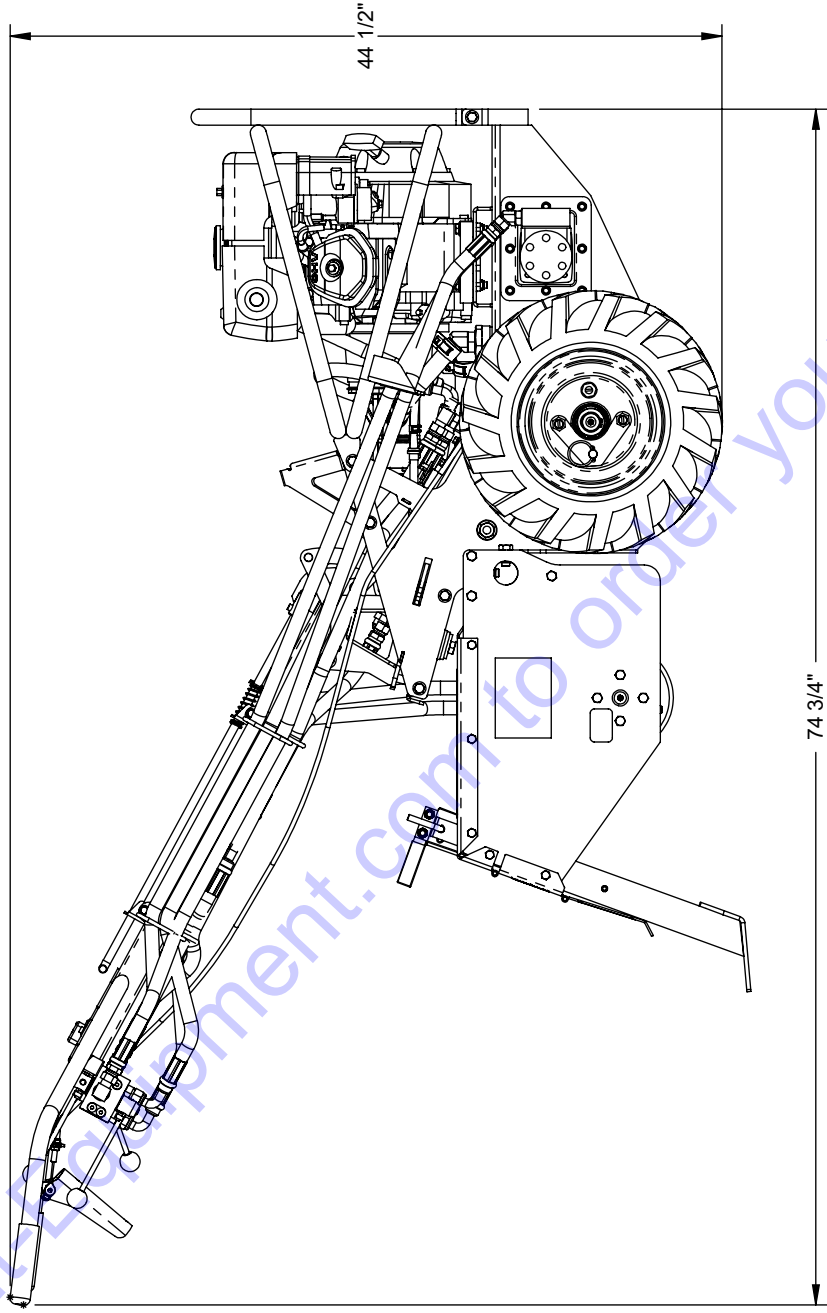
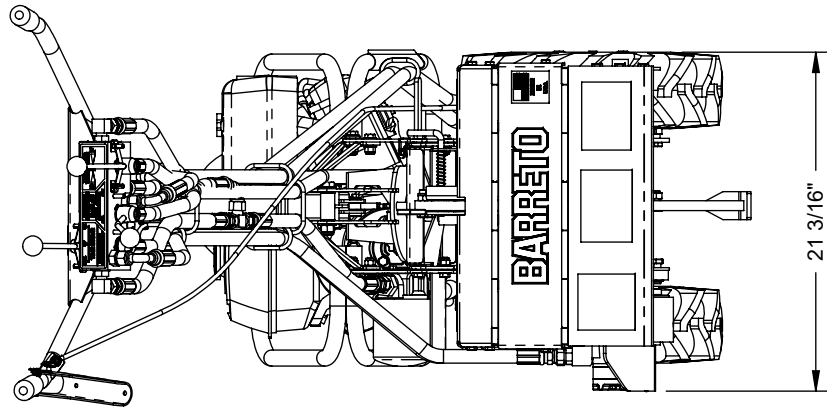
PRODUCT LINE:TILLER

SCALE: 1:32

DWG# E918 R1

SHEET 1 OF 2

BARRETO



TITLE: 918 TILLER 2018

PRODUCT LINE:TILLER

SCALE: 1:32

DWG# E918 R1

SHEET 2 OF 2

BARRETO

Go to Discount Equipment.com to order your Barreto

918/916 Tiller Decals

P/N 03040-01



P/N 03040-02



P/N 03040-03



P/N 03040-04



P/N 03040-06



P/N 03040-07



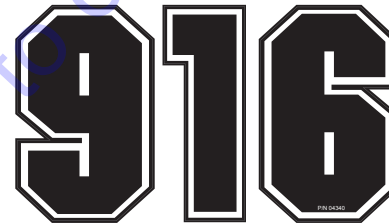
P/N 03040-08



P/N 03040-51



P/N 04340



P/N 03040-11



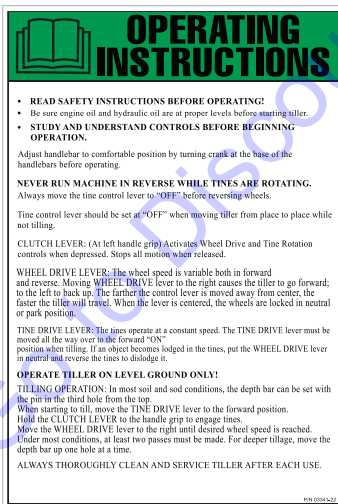
P/N 03040-57



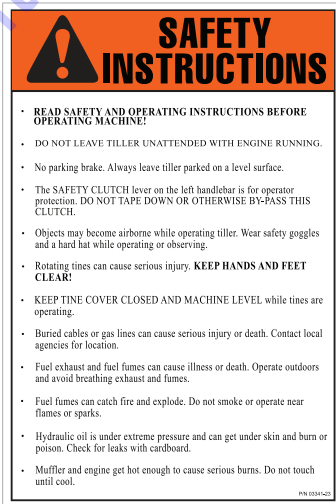
P/N 03341-07



P/N 03341-22



P/N 03341-23



P/N 16535



P/N 16536



All decals available as a kit, p/n K3040-918Y

PARTS FINDER

**Search Website
by Part Number**



**Search Manual
Library For Parts
Manual & Lookup Part
Numbers – Purchase
or Request Quote**

Search Manuals

Enter your information to help us find the right parts manual for your machine.

* Brand:

* Model:

* Serial:

* Part Number:

SEARCH

**Can't Find Part or
Manual? Request Help
by Manufacturer,
Model & Description**

Parts Order Form

Please fill in the following information to help us find the right part for your machine.

| | |
|---------------|----------------------|
| Manufacturer: | <input type="text"/> |
| Model: | <input type="text"/> |
| Description: | <input type="text"/> |
| Part Number: | <input type="text"/> |
| Quantity: | <input type="text"/> |
| Notes: | <input type="text"/> |

Submit

Discount-Equipment.com is your online resource for quality parts & equipment.

Florida: **561-964-4949** Outside Florida TOLL FREE: **877-690-3101**

Need parts?

Click on this link: <http://www.discount-equipment.com/category/5443-parts/> and choose one of the options to help get the right parts and equipment you are looking for. Please have the machine model and serial number available in order to help us get you the correct parts. If you don't find the part on the website or on one of the online manuals, please fill out the request form and one of our experienced staff members will get back to you with a quote for the right part that your machine needs.

We sell worldwide for the brands: Genie, Terex, JLG, MultiQuip, Mikasa, Essick, Whiteman, Mayco, Toro Stone, Diamond Products, Generac Magnum, Airman, Haulotte, Barreto, Power Blanket, Nifty Lift, Atlas Copco, Chicago Pneumatic, Allmand, Miller Curber, Skyjack, Lull, Skytrak, Tsurumi, Husquvarna Target, Stow, Wacker, Sakai, Mi-T-M, Sullair, Basic, Dynapac, MBW, Weber, Bartell, Bennar Newman, Haulotte, Ditch Runner, Menegotti, Morrison, Contec, Buddy, Crown, Edco, Wyco, Bomag, Laymor, EZ Trench, Bil-Jax, F.S. Curtis, Gehl Pavers, Heli, Honda, ICS/PowerGrit, IHI, Partner, Imer, Clipper, MMD, Koshin, Rice, CH&E, General Equipment, Amida, Coleman, NAC, Gradall, Square Shooter, Kent, Stanley, Tamco, Toku, Hatz, Kohler, Robin, Wisconsin, Northrock, Oztec, Toker TK, Rol-Air, APT, Wylie, Ingersoll Rand / Doosan, Innovatech, Con X, Ammann, Mecalac, Makinex, Smith Surface Prep, Small Line, Wanco, Yanmar