



www.discount-equipment.com

THE

**BARRETO**

**MODEL 712MT**

**HYDRAULIC MICRO TRENCHER  
EXPLODED VIEWS WITH PART NUMBERS**

CONGRATULATIONS!

You are now the proud owner of a BARRETO trencher. The following pages have detailed views of your trencher, along with corresponding part numbers. If you have any questions or need any replacement parts in the future, please contact us at your convenience. Our toll-free phone number, fax and email are listed below and parts may be ordered through any of these methods.

Thank you for your patronage and confidence in BARRETO equipment.

Machine Identification Record

BARRETO Customer number \_\_\_\_\_

Machine model number \_\_\_\_\_

Machine serial number \_\_\_\_\_

Engine manufacturer \_\_\_\_\_

Engine model number \_\_\_\_\_

Engine serial number \_\_\_\_\_

Go to Discount-Equipment.com to order your parts

# PARTS FINDER

**Search Website  
by Part Number**



**Search Manual  
Library For Parts  
Manual & Lookup Part  
Numbers – Purchase  
or Request Quote**

**Search Manuals**

Enter your information to search for a manual or to purchase a manual or parts.

\* Brand:

\* Model:

\* Serial:

\* Part Number:

SEARCH

**Can't Find Part or  
Manual? Request Help  
by Manufacturer,  
Model & Description**

**Parts Order Form**

Please fill in the following information:

Manufacturer:

Model:

Description:

Quantity:

Part Number:

Part Name:

Part Description:

Part Category:

Part Location:

Part Status:

Part Color:

Part Material:

Part Weight:

Part Dimensions:

Part Price:

Part Availability:

Part Lead Time:

Part Notes:

Submit

Discount-Equipment.com is your online resource for quality parts & equipment.

Florida: **561-964-4949** Outside Florida TOLL FREE: **877-690-3101**

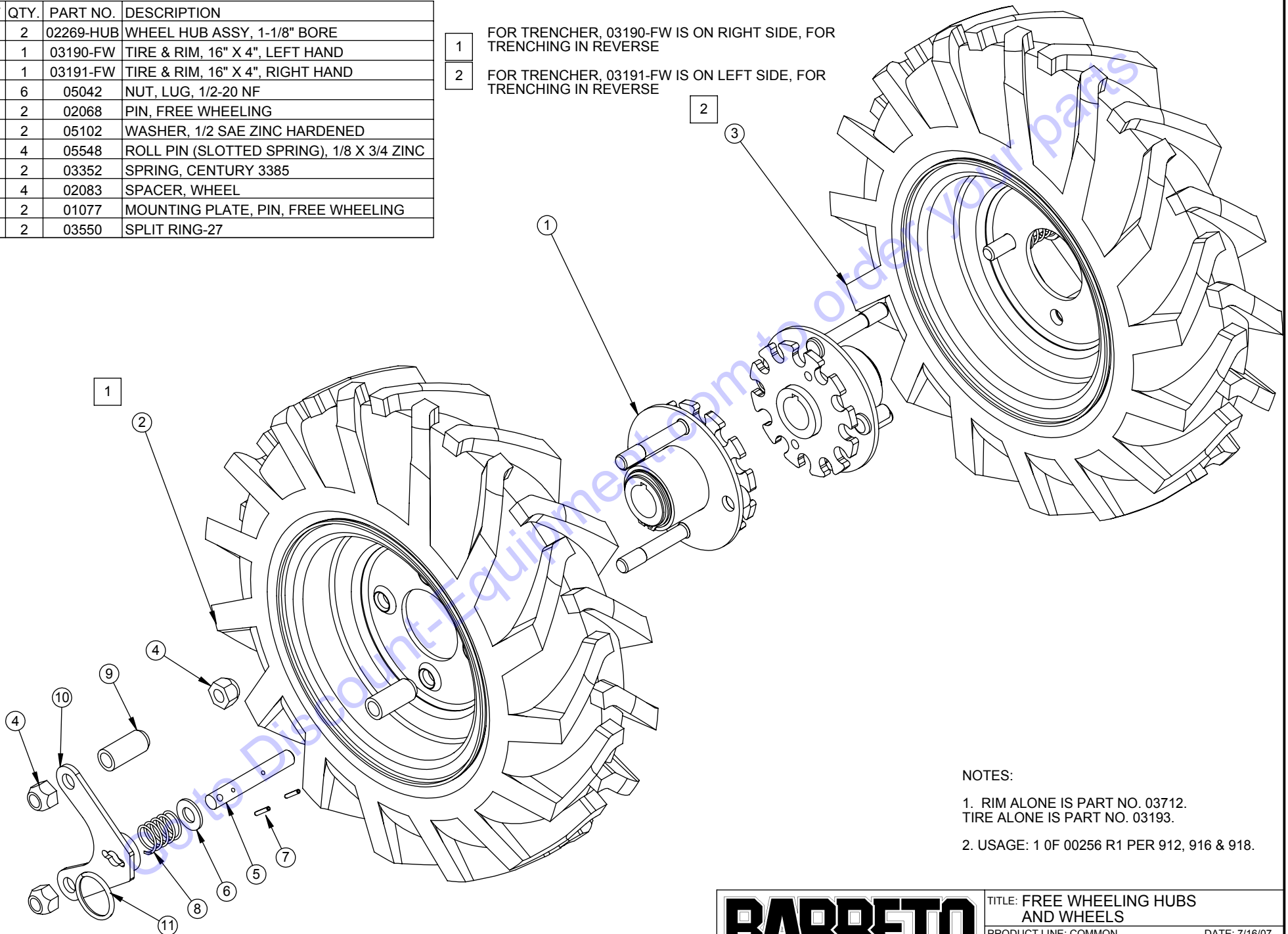
**Need parts?**

Click on this link: <http://www.discount-equipment.com/category/5443-parts/> and choose one of the options to help get the right parts and equipment you are looking for. Please have the machine model and serial number available in order to help us get you the correct parts. If you don't find the part on the website or on one of the online manuals, please fill out the request form and one of our experienced staff members will get back to you with a quote for the right part that your machine needs.

We sell worldwide for the brands: Genie, Terex, JLG, MultiQuip, Mikasa, Essick, Whiteman, Mayco, Toro Stone, Diamond Products, Generac Magnum, Airman, Haulotte, Barreto, Power Blanket, Nifty Lift, Atlas Copco, Chicago Pneumatic, Allmand, Miller Curber, Skyjack, Lull, Skytrak, Tsurumi, Husquvarna Target, Stow, Wacker, Sakai, Mi-T-M, Sullair, Basic, Dynapac, MBW, Weber, Bartell, Bennar Newman, Haulotte, Ditch Runner, Menegotti, Morrison, Contec, Buddy, Crown, Edco, Wyco, Bomag, Laymor, EZ Trench, Bil-Jax, F.S. Curtis, Gehl Pavers, Heli, Honda, ICS/PowerGrit, IHI, Partner, Imer, Clipper, MMD, Koshin, Rice, CH&E, General Equipment, Amida, Coleman, NAC, Gradall, Square Shooter, Kent, Stanley, Tamco, Toku, Hatz, Kohler, Robin, Wisconsin, Northrock, Oztec, Toker TK, Rol-Air, APT, Wylie, Ingersoll Rand / Doosan, Innovatech, Con X, Ammann, Mecalac, Makinex, Smith Surface Prep, Small Line, Wanco, Yanmar

| REF | QTY. | PART NO.  | DESCRIPTION                               |
|-----|------|-----------|---|
| 1   | 2    | 02269-HUB | WHEEL HUB ASSY, 1-1/8" BORE               |
| 2   | 1    | 03190-FW  | TIRE & RIM, 16" X 4", LEFT HAND           |
| 3   | 1    | 03191-FW  | TIRE & RIM, 16" X 4", RIGHT HAND          |
| 4   | 6    | 05042     | NUT, LUG, 1/2-20 NF                       |
| 5   | 2    | 02068     | PIN, FREE WHEELING                        |
| 6   | 2    | 05102     | WASHER, 1/2 SAE ZINC HARDENED             |
| 7   | 4    | 05548     | ROLL PIN (SLOTTED SPRING), 1/8 X 3/4 ZINC |
| 8   | 2    | 03352     | SPRING, CENTURY 3385                      |
| 9   | 4    | 02083     | SPACER, WHEEL                             |
| 10  | 2    | 01077     | MOUNTING PLATE, PIN, FREE WHEELING        |
| 11  | 2    | 03550     | SPLIT RING-27                             |

- 1 FOR TRENCHER, 03190-FW IS ON RIGHT SIDE, FOR TRENCHING IN REVERSE
- 2 FOR TRENCHER, 03191-FW IS ON LEFT SIDE, FOR TRENCHING IN REVERSE



NOTES:

1. RIM ALONE IS PART NO. 03712.  
TIRE ALONE IS PART NO. 03193.
2. USAGE: 1 OF 00256 R1 PER 912, 916 & 918.

**BARRETO**

TITLE: FREE WHEELING HUBS AND WHEELS  
 PRODUCT LINE: COMMON DATE: 7/16/07  
 SCALE: 1:4 DWG# 00256 R1  
 SHEET 1 OF 1

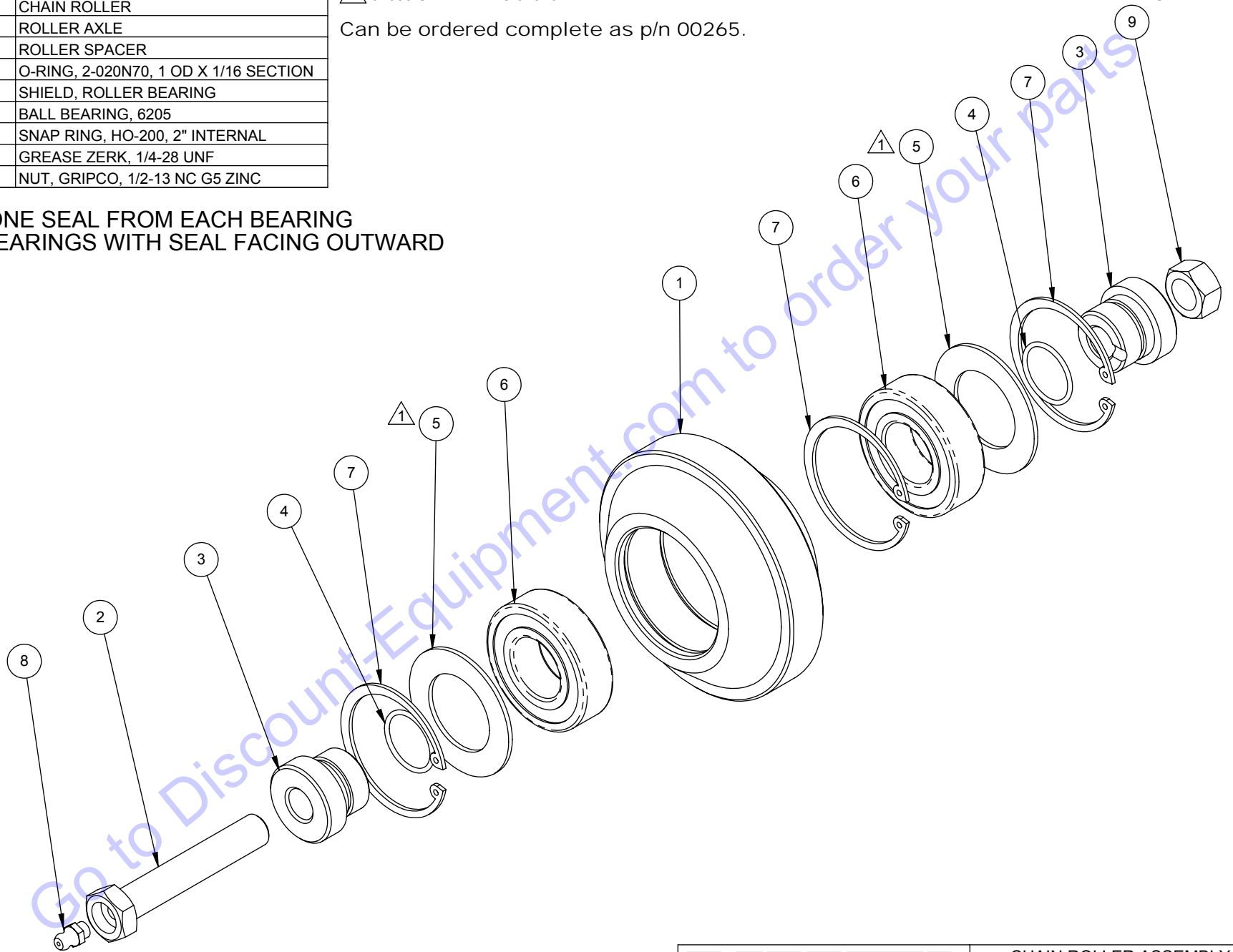
| REF | QTY. | PART NO. | DESCRIPTION                           |
|-----|------|----------|---------------------------------------|
| 1   | 1    | 10311    | CHAIN ROLLER                          |
| 2   | 1    | 10320    | ROLLER AXLE                           |
| 3   | 2    | 10312    | ROLLER SPACER                         |
| 4   | 2    | 10887    | O-RING, 2-020N70, 1 OD X 1/16 SECTION |
| 5   | 2    | 01039    | SHIELD, ROLLER BEARING                |
| 6   | 2    | 03043    | BALL BEARING, 6205                    |
| 7   | 3    | 05024    | SNAP RING, HO-200, 2" INTERNAL        |
| 8   | 1    | 05044    | GREASE ZERK, 1/4-28 UNF               |
| 9   | 1    | 05046    | NUT, GRIPCO, 1/2-13 NC G5 ZINC        |

⚠ 01039 SHIELD WAS 01026

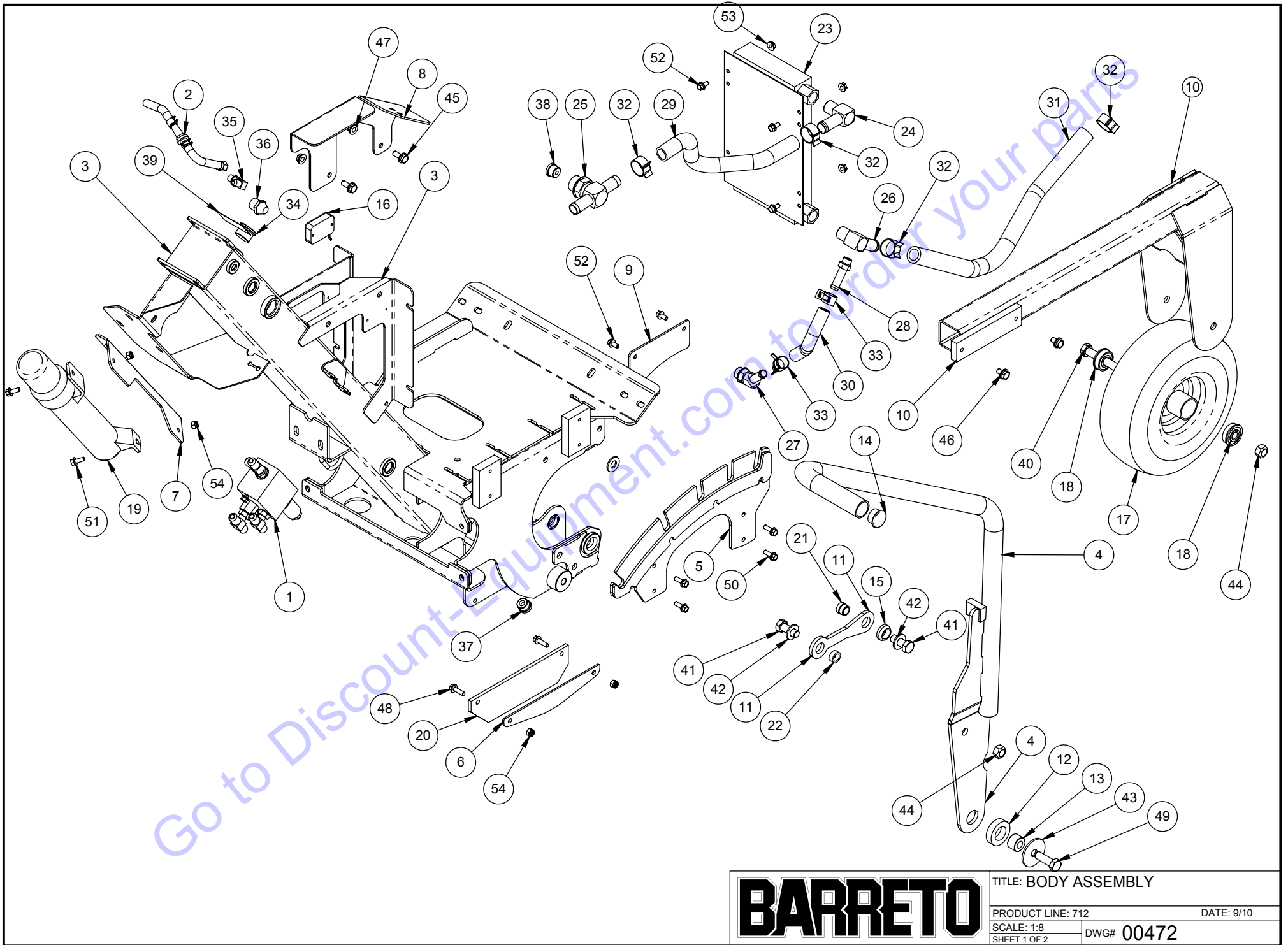
Can be ordered complete as p/n 00265.

UPDATED 10/10/16

REMOVE ONE SEAL FROM EACH BEARING  
INSTALL BEARINGS WITH SEAL FACING OUTWARD



|                              |               |
|------------------------------|---------------|
| TITLE: CHAIN ROLLER ASSEMBLY |               |
| PRODUCT LINE: TRENCHER 912   | DATE: 3/11/04 |
| SCALE: 1:2                   | DWG# 00265    |
| SHEET 1 OF 1                 |               |

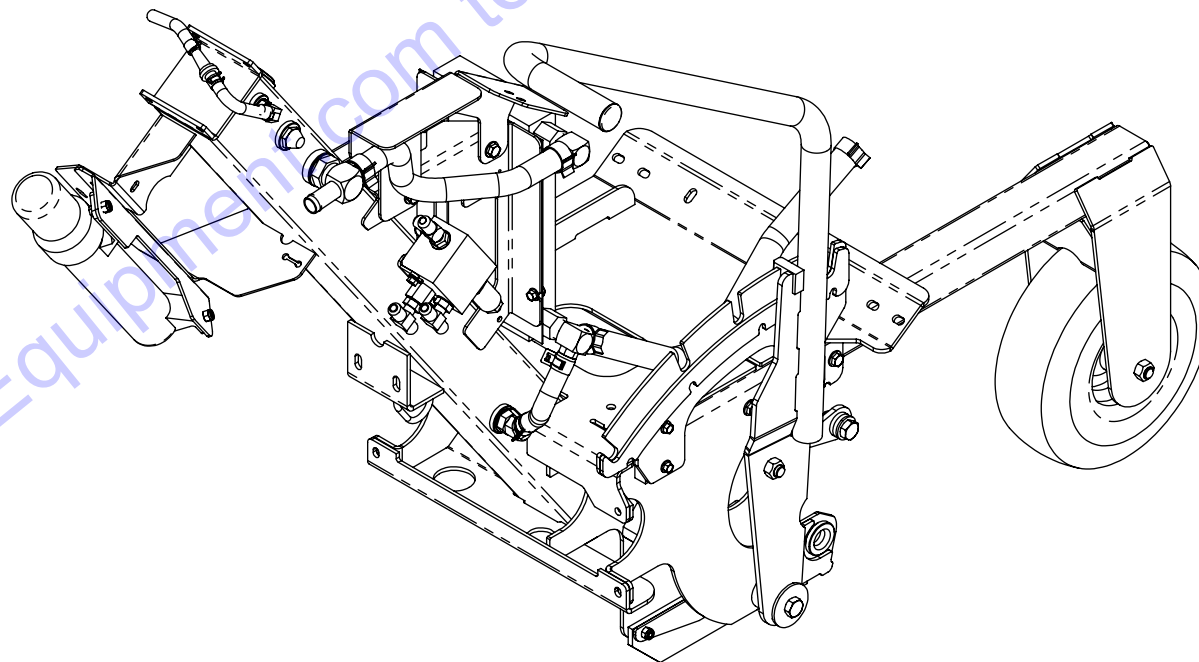


**BARRETO**

|                      |            |
|----------------------|------------|
| TITLE: BODY ASSEMBLY |            |
| PRODUCT LINE: 712    | DATE: 9/10 |
| SCALE: 1:8           | DWG# 00472 |
| SHEET 1 OF 2         |            |

| REF | QTY. | PART NO. | DESCRIPTION        | REF | QTY. | PART NO. | DESCRIPTION                             |
|-----|------|----------|--------------------|-----|------|----------|---|
| 1   | 1    | 00481    | UNLOADER ASSEMBLY  | 48  | 2    | 05535    | WHIZ-LOCK 1/4 - 20 X 7/8                |
| 2   | 1    | 11987    | BREATHER HOSE ASSY | 49  | 1    | 05300-01 | HH CAP SCREW, 1/2-13 NC X 1-1/2 G5 ZINC |
| 3   | 1    | 11894 R1 | BODY               | 50  | 4    | 05049    | WHIZ-LOCK 1/4 - 20 X 3/4                |
| 4   | 1    | 11914    | RAISE LEVER        | 51  | 2    | 05069    | WHIZ-LOCK 1/4 - 20 X 5/8                |
| 5   | 1    | 11915    | LIFT STOPS         | 52  | 6    | 05051    | WHIZ-LOCK 1/4 - 20 X 1/2                |
| 6   | 1    | 11474    | FLAP BACKING       | 53  | 4    | 05419    | NUT, 1/4-20 NC, SERRATED FLANGE, ZN     |
| 7   | 1    | 12143    | CANISTER MOUNT     | 54  | 4    | 05096    | NUT, NYLOCK, 1/4-20 NC ZINC             |

|    |   |          |   |
|----|---|----------|---|
| 8  | 1 | 12854    | HOSE GUARD                              |
| 9  | 1 | 12097    | SHIELD GUIDE                            |
| 10 | 1 | 11909    | WHEEL MOUNT                             |
| 11 | 1 | 11965    | LIFT LINK                               |
| 12 | 1 | 11905    | LEVER SPRING                            |
| 13 | 1 | 11910 R1 | LIFT SPACER                             |
| 14 | 1 | 12130    | TUBE END CAP - 1-1/4"                   |
| 15 | 1 | 10958    | RUBBER BUSHING                          |
| 16 | 1 | 03009-R1 | HOUR METER, WITH FLASH ALERT            |
| 17 | 1 | 10347    | TIRE & RIM 4.10/3.50-4                  |
| 18 | 2 | 10347.50 | BEARING, 1/2 BORE                       |
| 19 | 1 | 12090    | INSTRUCTION CANISTER                    |
| 20 | 1 | 11475    | FLAP                                    |
| 21 | 1 | 11974 R1 | LIFT BUSHING                            |
| 22 | 1 | 11975 R1 | LIFT BUSHING                            |
| 23 | 1 | 10527    | OIL COOLER, B & M 70273, 11 X 5.75      |
| 24 | 1 | 04227    | FITTING, 4501-12-8                      |
| 25 | 1 | 11771-M  | FITTING, 4606-12-12-12, MACHINED        |
| 26 | 1 | 04227B-P | FITTING, 4501-12-8, TAPPED #6           |
| 27 | 1 | 04216    | FITTING, 4603-8-8                       |
| 28 | 1 | 11667    | FITTING, 4604-8-6                       |
| 29 | 1 | 11972    | HOSE, TANK OUT / COOLER IN, 3/4"        |
| 30 | 1 | 11971    | HOSE, COOLER OUT / TANK                 |
| 31 | 1 | 11970    | HOSE, PUMP SUCTION, 3/4 WIRE HELIX      |
| 32 | 4 | 05008    | HOSE CLAMP CTB 27                       |
| 33 | 2 | 12131    | CLAMP, 1/2" HOSE, CTB-20                |
| 34 | 1 | 10526    | FITTING, 6409-12 PLUG                   |
| 35 | 1 | 04555    | FITTING, 6801-4-4                       |
| 36 | 1 | 03503    | SIGHT GAUGE                             |
| 37 | 1 | 10361    | FITTING, 6409-8 PLUG                    |
| 38 | 1 | 12094    | ORFICE PLUG, .25                        |
| 39 | 1 | 03040-06 | DECAL, "HYDRAULIC OIL ONLY"             |
| 40 | 1 | 05154    | HH CAP SCREW, 1/2-13 NC X 5 G5 ZINC     |
| 41 | 2 | 05323    | HH CAP SCREW, 1/2-13 NC X 1-1/4 G5 ZINC |
| 42 | 3 | 05102    | WASHER, 1/2 SAE ZINC HARDENED           |
| 43 | 1 | 12981    | FENDER WASHER, 1/2 X 2 X 1/8 ZN         |
| 44 | 2 | 05046    | NUT, GRIPCO, 1/2-13 NC G5 ZINC          |
| 45 | 2 | 05140    | WHIZ-LOCK 5/16 - 18 X 3/4               |
| 46 | 2 | 05169    | WHIZ-LOCK 5/16 - 18 X 1/2               |
| 47 | 2 | 05364    | NUT, 5/16-18 NC, SERRATED FLANGE, ZN    |



**BARRETO**

TITLE: BODY ASSEMBLY

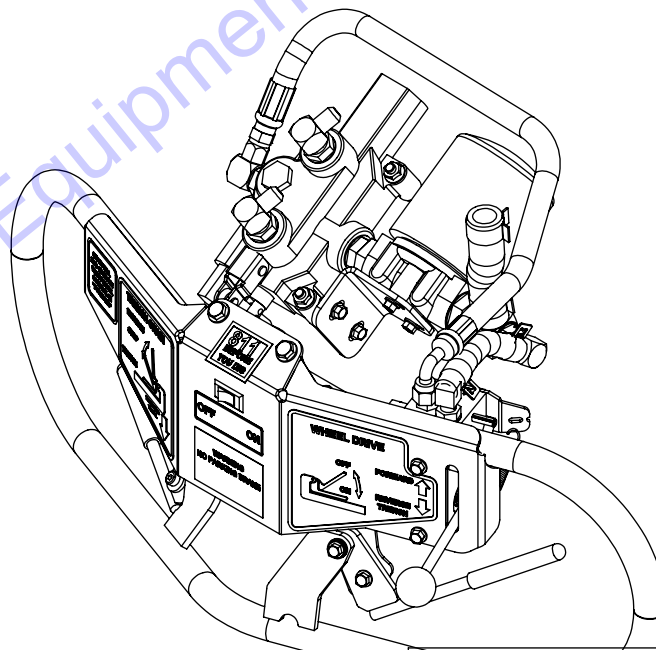
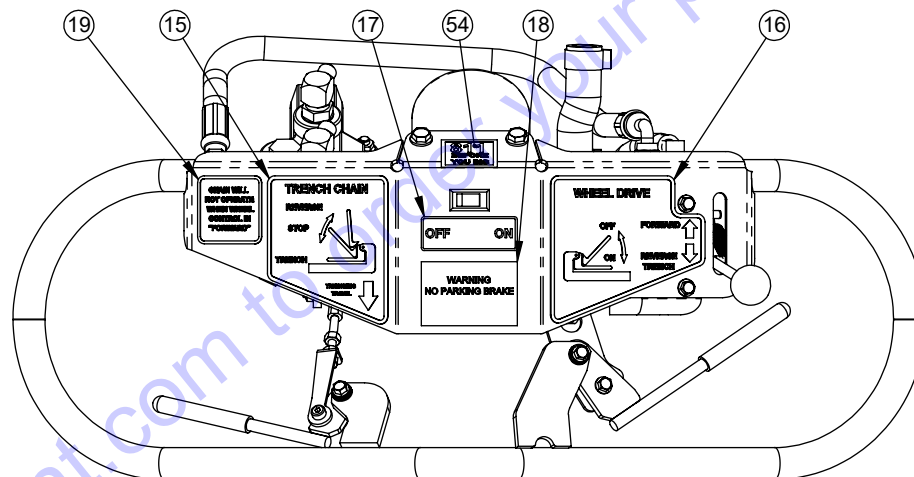
PRODUCT LINE: 712

DATE: 9/10

SCALE: 1:8  
SHEET 2 OF 2

DWG# 00472

| REF. | QTY. | PART NO. | DESCRIPTION                              | REF. | QTY. | PART NO. | DESCRIPTION                         |
|------|------|----------|--|------|------|----------|-------------------------------------|
| 1    | 1    | 00480-PS | VALVE ASSEMBLY                           | 49   | 1    | 05266    | NUT, GRIPCO, 1/4-28 NF G5 ZINC      |
| 2    | 1    | 11976WD  | HANDLE BARS                              | 50   | 1    | 10773    | NUT, GRIPCO, 1/4-20 NC G5 ZINC      |
| 3    | 1    | 12048    | FILTER MOUNT                             | 51   | 3    | 05267    | NUT, 1/4-28 NF ZINC                 |
| 4    | 1    | 11980    | TRENCH LEVER                             | 52   | 3    | 05096    | NUT, NYLOCK, 1/4-20 NC ZINC         |
| 5    | 1    | 12017    | WHEEL DRIVE LEVER                        | 53   | 2    | 05419    | NUT, 1/4-20 NC, SERRATED FLANGE, ZN |
| 6    | 1    | 12088    | ADJUSTER                                 | 54   | 1    | 03345    | DECAL, "CALL 811 BEFORE YOU DIG"    |
| 7    | 1    | 12032    | PULL LINK                                |      |      |          |                                     |
| 8    | 1    | 11982    | VALVE ROCKER                             |      |      |          |                                     |
| 9    | 2    | 11741    | SPACER                                   |      |      |          |                                     |
| 10   | 1    | 12019    | VALVE SPACER                             |      |      |          |                                     |
| 11   | 1    | 06421    | GROUND WIRE, IGNITION SWITCH             |      |      |          |                                     |
| 12   | 1    | 06420    | ROCKER SWITCH, IGNITION OFF/ON           |      |      |          |                                     |
| 13   | 1    | 03806    | QUICK-SPLICE                             |      |      |          |                                     |
| 14   | 2    | 03036    | GRIP, 3/8 X 3-1/2                        |      |      |          |                                     |
| 15   | 1    | 04445-01 | TRENCH DECAL                             |      |      |          |                                     |
| 16   | 1    | 04445-04 | DRIVE DECAL                              |      |      |          |                                     |
| 17   | 1    | 03341-07 | DECAL, "IGNITION OFF/ON"                 |      |      |          |                                     |
| 18   | 1    | 03341-24 | DECAL, "WARNING - NO PARKING BRAKE"      |      |      |          |                                     |
| 19   | 1    | 04445-06 | DECAL, "REVERSE TO TRENCH"               |      |      |          |                                     |
| 20   | 4    | 11979    | BUSHING, IGUS MFI-0608-03                |      |      |          |                                     |
| 21   | 1    | 04513-M  | VALVE RD-2508-M4, 2200 psi               |      |      |          |                                     |
| 22   | 1    | 03509    | BRACKET & PINS, COMES WITH VALVE         |      |      |          |                                     |
| 23   | 1    | 12026    | HOSE, DRIVE VALVE / CHAIN VALVE, 3/8"    |      |      |          |                                     |
| 24   | 1    | 12025    | HOSE, DUMP / FILTER EL. 1/2"             |      |      |          |                                     |
| 25   | 2    | 12131    | CLAMP, 1/2" HOSE, CTB-20                 |      |      |          |                                     |
| 26   | 1    | 11973    | HOSE, FILTER / TANK 3/4"                 |      |      |          |                                     |
| 27   | 2    | 05008    | HOSE CLAMP CTB 27                        |      |      |          |                                     |
| 28   | 2    | 10404    | FITTING, 6801-6-8                        |      |      |          |                                     |
| 29   | 1    | 04202-M  | FITTING, 4601-12-12, TOP PORTED #8       |      |      |          |                                     |
| 30   | 1    | 10405    | FITTING, 6801-6-10                       |      |      |          |                                     |
| 31   | 1    | 04572    | FITTING, 4601-8-8                        |      |      |          |                                     |
| 32   | 1    | 04403    | FILTER HEAD, #12 O-RING                  |      |      |          |                                     |
| 33   | 1    | 11006    | FITTING, 6407-12-10                      |      |      |          |                                     |
| 34   | 1    | 03951    | FILTER, HYDRAULIC OIL, WITH BY-PASS      |      |      |          |                                     |
| 35   | 1    | 03511    | BALL JOINT, 1/4-28 UNF                   |      |      |          |                                     |
| 36   | 2    | 05054    | HH CAP SCREW, 5/16-18 NC X 1-3/4 G5 ZINC |      |      |          |                                     |
| 37   | 1    | 05294    | HH CAP SCREW, 5/16-18 NC X 1-1/2 G5 ZINC |      |      |          |                                     |
| 38   | 4    | 05140    | WHIZ-LOCK 5/16 - 18 X 3/4                |      |      |          |                                     |
| 39   | 4    | 05273    | NUT, NYLOCK, 5/16-18 NC ZINC             |      |      |          |                                     |
| 40   | 3    | 05364    | NUT, 5/16-18 NC, SERRATED FLANGE, ZN     |      |      |          |                                     |
| 41   | 1    | 12087    | SET SCREW, 1/4-28 X 2 PLN                |      |      |          |                                     |
| 42   | 1    | 05366    | WHIZ-LOCK 1/4 - 20 X 1-1/4               |      |      |          |                                     |
| 43   | 1    | 05368    | WHIZ-LOCK 1/4 - 20 X 1                   |      |      |          |                                     |
| 44   | 2    | 05535    | WHIZ-LOCK 1/4 - 20 X 7/8                 |      |      |          |                                     |
| 45   | 1    | 05049    | WHIZ-LOCK 1/4 - 20 X 3/4                 |      |      |          |                                     |
| 46   | 4    | 05069    | WHIZ-LOCK 1/4 - 20 X 5/8                 |      |      |          |                                     |
| 47   | 1    | 05502    | SH SHOULDER SCREW, (5/16) X 1/4 NC       |      |      |          |                                     |
| 48   | 3    | 05081    | WASHER, 1/4 SAE ZINC                     |      |      |          |                                     |



**BARRETO**

TITLE: CONTROL ASSEMBLY

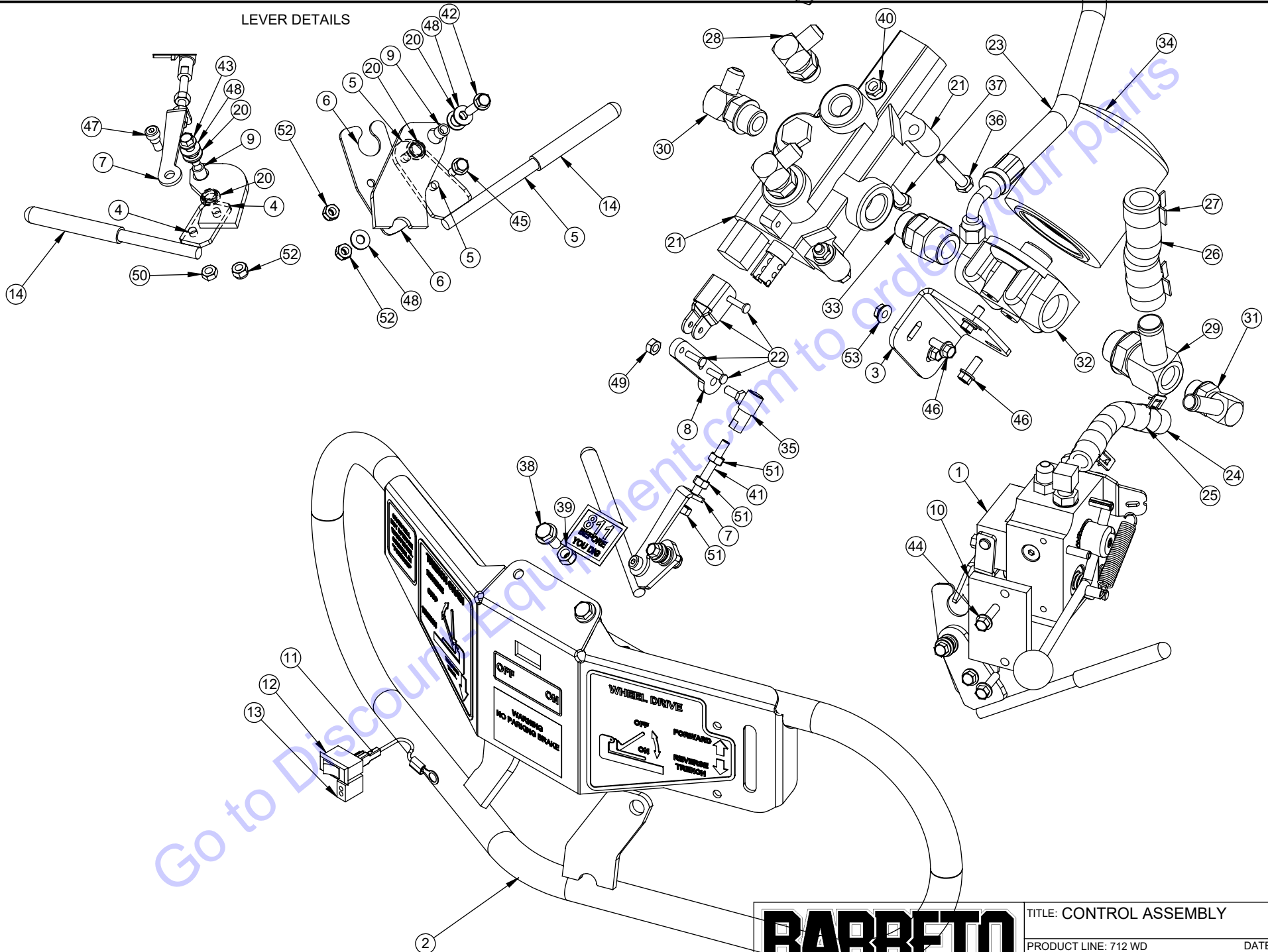
PRODUCT LINE: 712 WD

DATE:09/09

SCALE: 1:6  
SHEET 1 OF 2

DWG# 00474 WD

LEVER DETAILS



**BARRETO**

TITLE: CONTROL ASSEMBLY

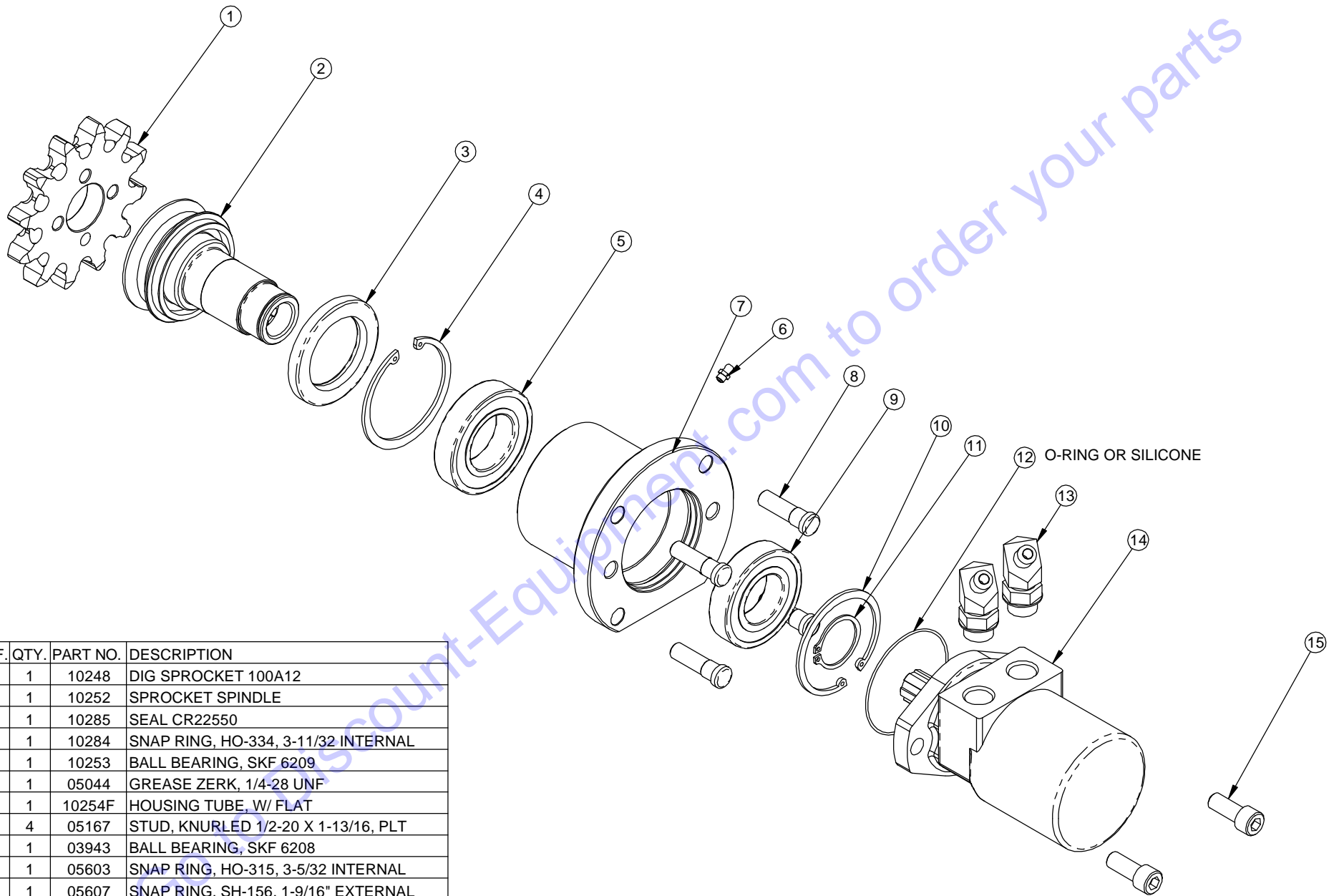
PRODUCT LINE: 712 WD

DATE: 09/09

SCALE: 1:4  
SHEET 2 OF 2

DWG# 00474 WD





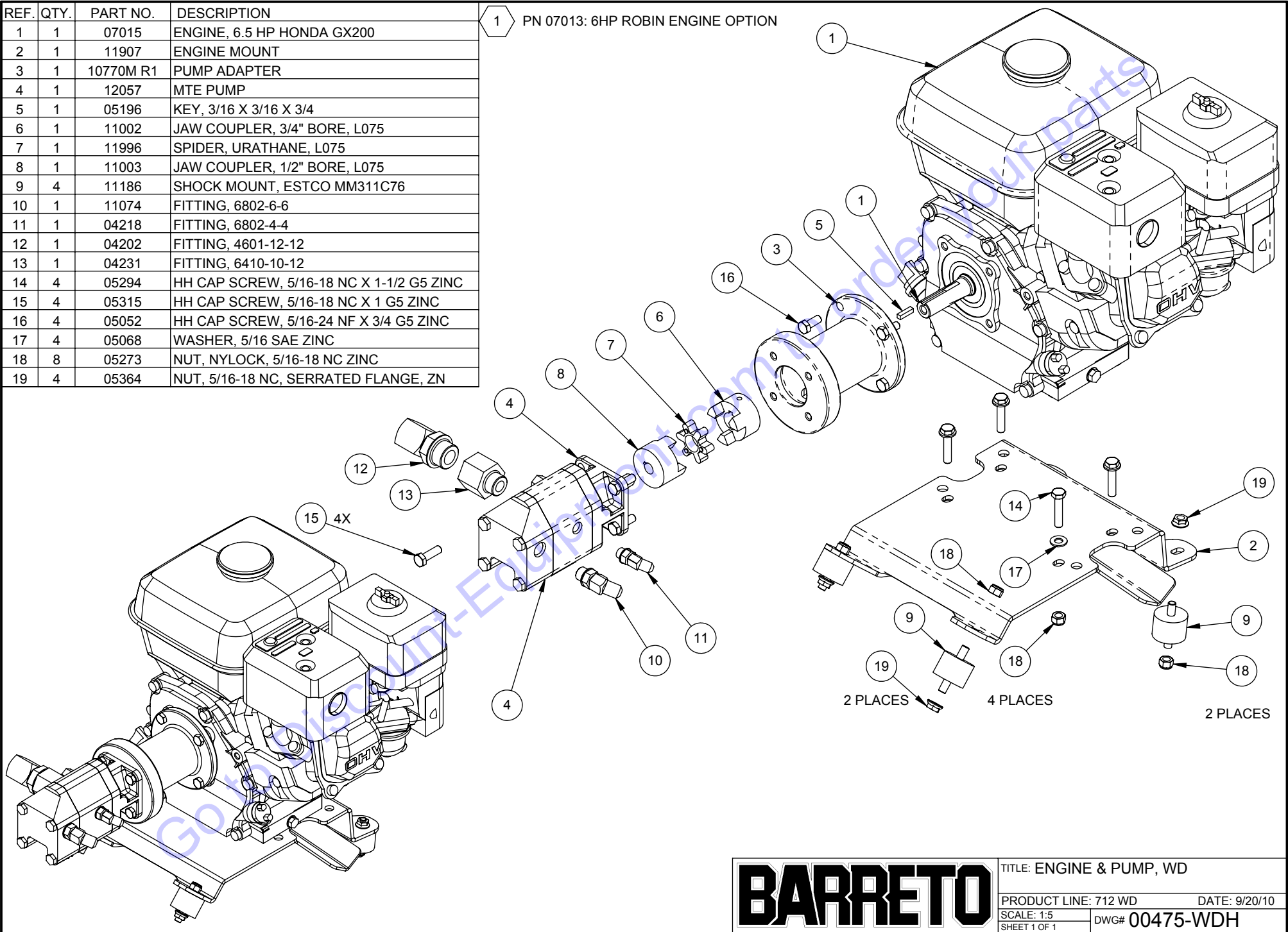
| REF. | QTY. | PART NO. | DESCRIPTION                            |
|------|------|----------|--|
| 1    | 1    | 10248    | DIG SPROCKET 100A12                    |
| 2    | 1    | 10252    | SPROCKET SPINDLE                       |
| 3    | 1    | 10285    | SEAL CR22550                           |
| 4    | 1    | 10284    | SNAP RING, HO-334, 3-11/32 INTERNAL    |
| 5    | 1    | 10253    | BALL BEARING, SKF 6209                 |
| 6    | 1    | 05044    | GREASE ZERK, 1/4-28 UNF                |
| 7    | 1    | 10254F   | HOUSING TUBE, W/ FLAT                  |
| 8    | 4    | 05167    | STUD, KNURLED 1/2-20 X 1-13/16, PLT    |
| 9    | 1    | 03943    | BALL BEARING, SKF 6208                 |
| 10   | 1    | 05603    | SNAP RING, HO-315, 3-5/32 INTERNAL     |
| 11   | 1    | 05607    | SNAP RING, SH-156, 1-9/16" EXTERNAL    |
| 12   | 1    | 10689    | O-RING, 2-042, 3-3/8 OD X 1/16 SECTION |
| 13   | 2    | 10406    | FITTING, 6802-6-10                     |
| 14   | 1    | 11992    | MOTOR, PARKER TB 0130, 8.0 CI          |
| 15   | 2    | 05585    | SH CAP SCREW, 1/2-13 NC X 1-1/4 ZINC   |

**BARRETO**

TITLE: CHAIN DRIVE  
 PRODUCT LINE: 712 TRENCHER DATE: 7/28/09  
 SCALE: 1:4 SHEET 1 OF 1 DWG# 00473

| REF. | QTY. | PART NO.  | DESCRIPTION                              |
|------|------|-----------|--|
| 1    | 1    | 07015     | ENGINE, 6.5 HP HONDA GX200               |
| 2    | 1    | 11907     | ENGINE MOUNT                             |
| 3    | 1    | 10770M R1 | PUMP ADAPTER                             |
| 4    | 1    | 12057     | MTE PUMP                                 |
| 5    | 1    | 05196     | KEY, 3/16 X 3/16 X 3/4                   |
| 6    | 1    | 11002     | JAW COUPLER, 3/4" BORE, L075             |
| 7    | 1    | 11996     | SPIDER, URATHANE, L075                   |
| 8    | 1    | 11003     | JAW COUPLER, 1/2" BORE, L075             |
| 9    | 4    | 11186     | SHOCK MOUNT, ESTCO MM311C76              |
| 10   | 1    | 11074     | FITTING, 6802-6-6                        |
| 11   | 1    | 04218     | FITTING, 6802-4-4                        |
| 12   | 1    | 04202     | FITTING, 4601-12-12                      |
| 13   | 1    | 04231     | FITTING, 6410-10-12                      |
| 14   | 4    | 05294     | HH CAP SCREW, 5/16-18 NC X 1-1/2 G5 ZINC |
| 15   | 4    | 05315     | HH CAP SCREW, 5/16-18 NC X 1 G5 ZINC     |
| 16   | 4    | 05052     | HH CAP SCREW, 5/16-24 NF X 3/4 G5 ZINC   |
| 17   | 4    | 05068     | WASHER, 5/16 SAE ZINC                    |
| 18   | 8    | 05273     | NUT, NYLOCK, 5/16-18 NC ZINC             |
| 19   | 4    | 05364     | NUT, 5/16-18 NC, SERRATED FLANGE, ZN     |

1 PN 07013: 6HP ROBIN ENGINE OPTION

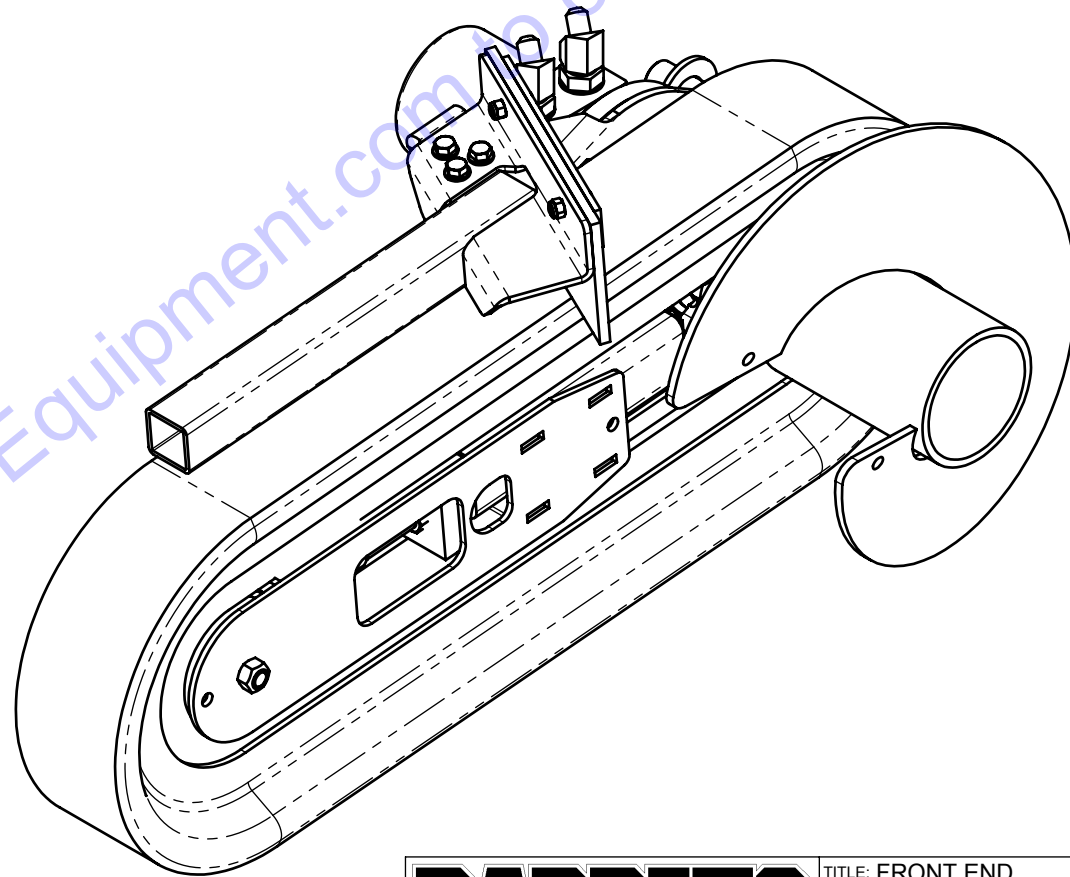


**BARRETO**

TITLE: ENGINE & PUMP, WD  
 PRODUCT LINE: 712 WD DATE: 9/20/10  
 SCALE: 1:5 SHEET 1 OF 1 DWG# 00475-WDH

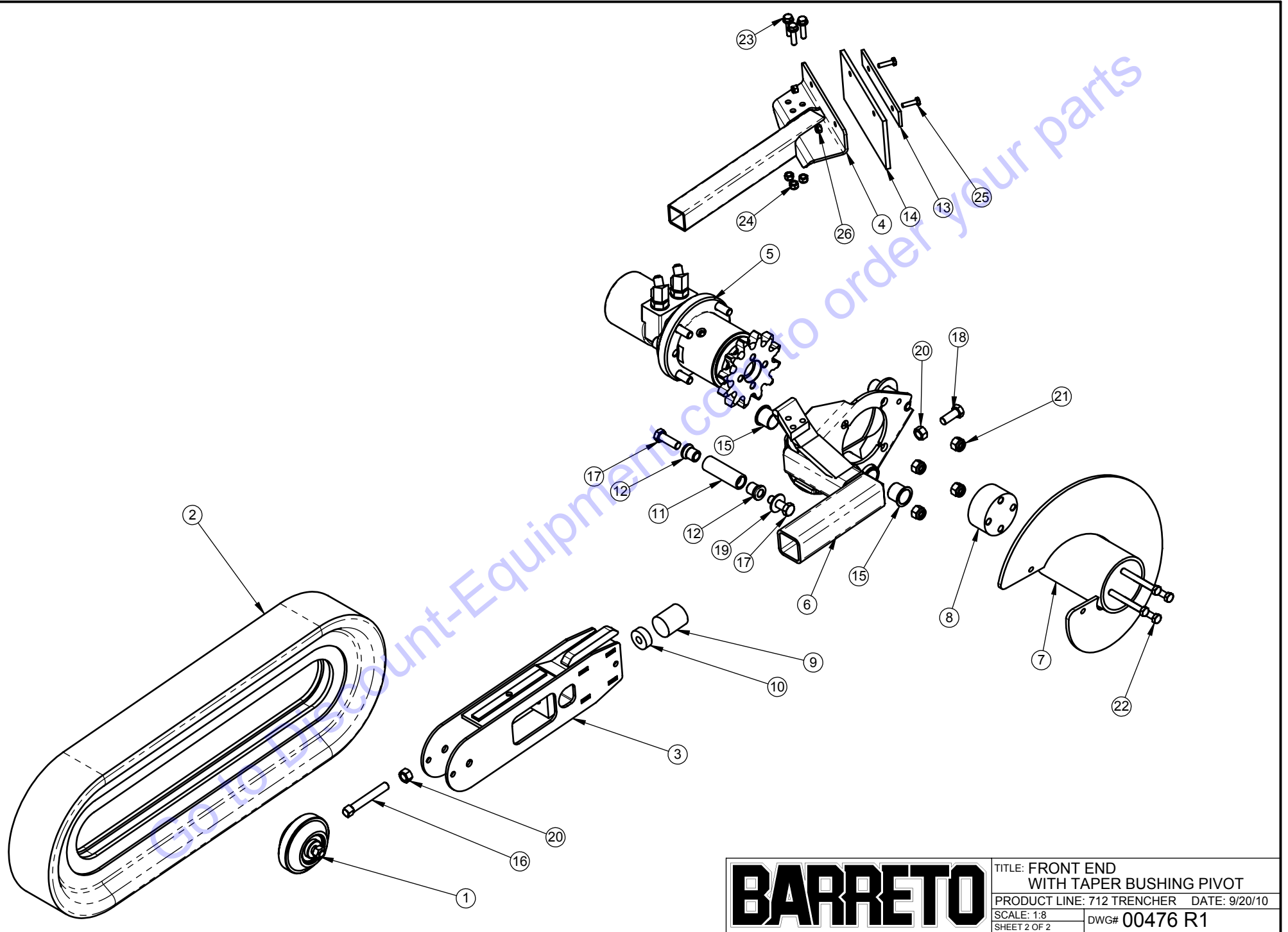
| ITEM NO. | QTY. | PART NO. | DESCRIPTION                             |
|----------|------|----------|---|
| 1        | 1    | 00265    | ROLLER ASSEMBLY                         |
| 2        | 1    | CHAIN    | DIG CHAIN (CALL FOR OPTIONS)            |
| 3        | 1    | 10316    | BOOM - 12"                              |
| 4        | 1    | 11966    | CHAIN GUARD                             |
| 5        | 1    | 00473    | CHAIN DRIVE                             |
| 6        | 1    | 11895    | MOTOR HOUSING                           |
| 7        | 1    | 10287    | AUGER                                   |
| 8        | 1    | 10286    | AUGER SPACER                            |
| 9        | 1    | 10270    | CUSHION, BOOM                           |
| 10       | 1    | 10318    | BOOM CUSHION WASHER                     |
| 11       | 1    | 11906 R1 | PIVOT PIN                               |
| 12       | 2    | 12855    | TAPER BUSHING                           |
| 13       | 1    | 10931    | DEFLECTOR KEEPER                        |
| 14       | 1    | 12051    | CHAIN FLAP                              |
| 15       | 2    | 03269    | BUSHING, IGUS LFI-1618-16               |
| 16       | 1    | 10319    | CHAIN TENSION SCREW                     |
| 17       | 2    | 05300-01 | HH CAP SCREW, 1/2-13 NC X 1-1/2 G5 ZINC |
| 18       | 1    | 05323    | HH CAP SCREW, 1/2-13 NC X 1-1/4 G5 ZINC |
| 19       | 1    | 05083    | WASHER, 7/16 USS ZINC                   |
| 20       | 2    | 10326    | NUT, 1/2-13 NC G5 ZINC                  |
| 21       | 4    | 05075    | NUT, NYLOCK, 1/2-20 NF ZINC             |
| 22       | 4    | 10568    | HH CAP SCREW, 3/8-24 NF X 3 G5 ZINC     |
| 23       | 3    | 05182    | WHIZ LOCK, 5/16-18 NC X 1-1/4 G8 ZINC   |
| 24       | 3    | 05273    | NUT, NYLOCK, 5/16-18 NC ZINC            |
| 25       | 2    | 05237    | HH CAP SCREW, 1/4-20 NC X 1 G5 ZINC     |
| 26       | 2    | 05096    | NUT, NYLOCK, 1/4-20 NC ZINC             |

**18" BOOM : 10649**  
**18" CHAIN GUARD: 11966-18**



**BARRETO**

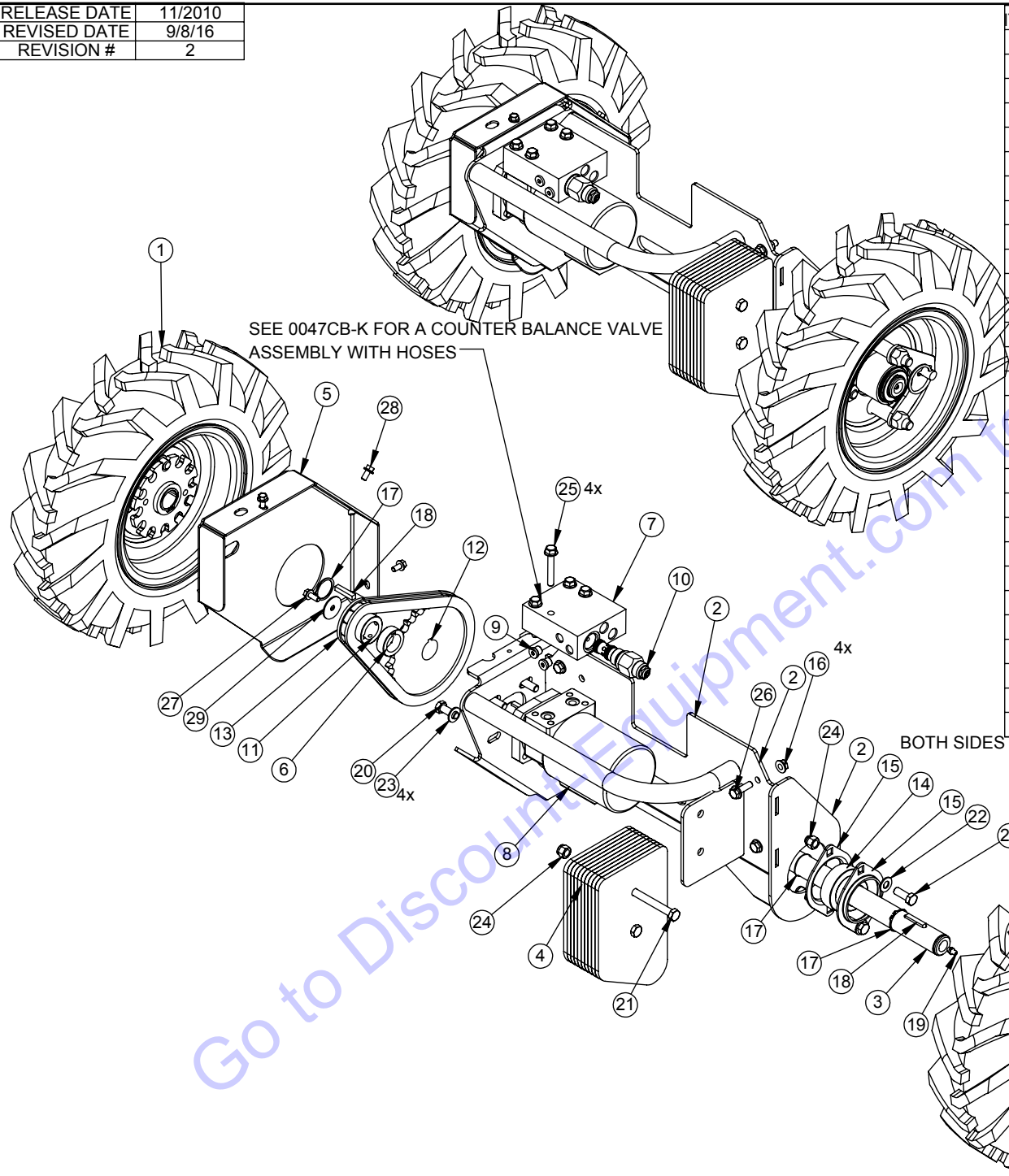
TITLE: FRONT END  
WITH TAPER BUSHING PIVOT  
PRODUCT LINE: 712 TRENCHER DATE: 9/20/10  
SCALE: 1:5  
SHEET 1 OF 2 DWG# 00476 R1



**BARRETO**

|  |               |
|--|---------------|
| TITLE: FRONT END<br>WITH TAPER BUSHING PIVOT |               |
| PRODUCT LINE: 712 TRENCHER                   | DATE: 9/20/10 |
| SCALE: 1:8                                   | DWG# 00476 R1 |
| SHEET 2 OF 2                                 |               |

|              |         |
|--------------|---------|
| RELEASE DATE | 11/2010 |
| REVISED DATE | 9/8/16  |
| REVISION #   | 2       |



| ITEM NO. | QTY. | PART NO. | DESCRIPTION                             |
|----------|------|----------|---|
| 1        | 1    | 00256 R1 | FREE WHEELING HUB & WHEEL, SET RH & LH  |
| 2        | 1    | 12001-LH | DRIVE FRAME                             |
| 3        | 1    | 12000    | DRIVE AXLE                              |
| 4        | 1    | 12133    | WEIGHTS                                 |
| 5        | 1    | 12006R   | CHAIN COVER                             |
| 6        | 1    | 12128    | SPROCKET SPACER                         |
| 7        | 1    | 12052B   | C-BALANCE MANIFOLD, SDC10-3S            |
| 8        | 1    | 12111    | MOTOR, PARKER TB 0260, 15.9 CI          |
| 9        | 2    | 03300    | FITTING, 6409-4 PLUG                    |
| 10       | 1    | 04405    | C-BALANCE CARTRIDGE, CB10-HV            |
| 11       | 1    | 02015    | SPROCKET, #50 11 TOOTH                  |
| 12       | 1    | 12005    | SPROCKET, #50 28 T, 1-1/8 BORE, 50BS28  |
| 13       | 1    | 12007    | CHAIN W/ MASTER LINK, #50, 40L, 25"     |
| 14       | 2    | 03306    | BEARING WITH COLLAR, 1.125, RA102RRB    |
| 15       | 4    | 03283-01 | BEARING FLANGE, 03283 IS A SET OF 2     |
| 16       | 4    | 05364    | NUT, 5/16-18 NC, SERRATED FLANGE, ZN    |
| 17       | 7    | 05606    | SNAP RING, 1-1/8" EXTERNAL              |
| 18       | 3    | 05018    | KEY, 1/4 X 1/4 X 1-1/4 HARDENED         |
| 19       | 2    | 05044    | GREASE ZERK, 1/4-28 UNF                 |
| 20       | 8    | 05059    | HH CAP SCREW, 3/8-16 NC X 1 G5 ZINC     |
| 21       | 2    | 10598    | HH CAP SCREW, 3/8-16 NC X 3-1/4 G5 ZINC |
| 22       | 4    | 05101    | WASHER, 3/8 SAE ZINC                    |
| 23       | 4    | 05103    | WASHER, 3/8 A325 HARDENED ZINC          |
| 24       | 6    | 05073    | NUT, NYLOCK, 3/8-16 NC ZINC             |
| 25       | 4    | 05566    | HHFS 5/16-18 X 2, G5, ZN                |
| 26       | 4    | 05144    | WHIZ-LOCK 5/16 - 18 X 1                 |
| 27       | 1    | 05069    | WHIZ-LOCK 1/4 - 20 X 5/8                |
| 28       | 3    | 05051    | WHIZ-LOCK 1/4 - 20 X 1/2                |
| 29       | 1    | 05545    | WASHER, 1/4 X 1 1/4 ZN                  |

# BARRETO

TITLE: WHEEL DRIVE

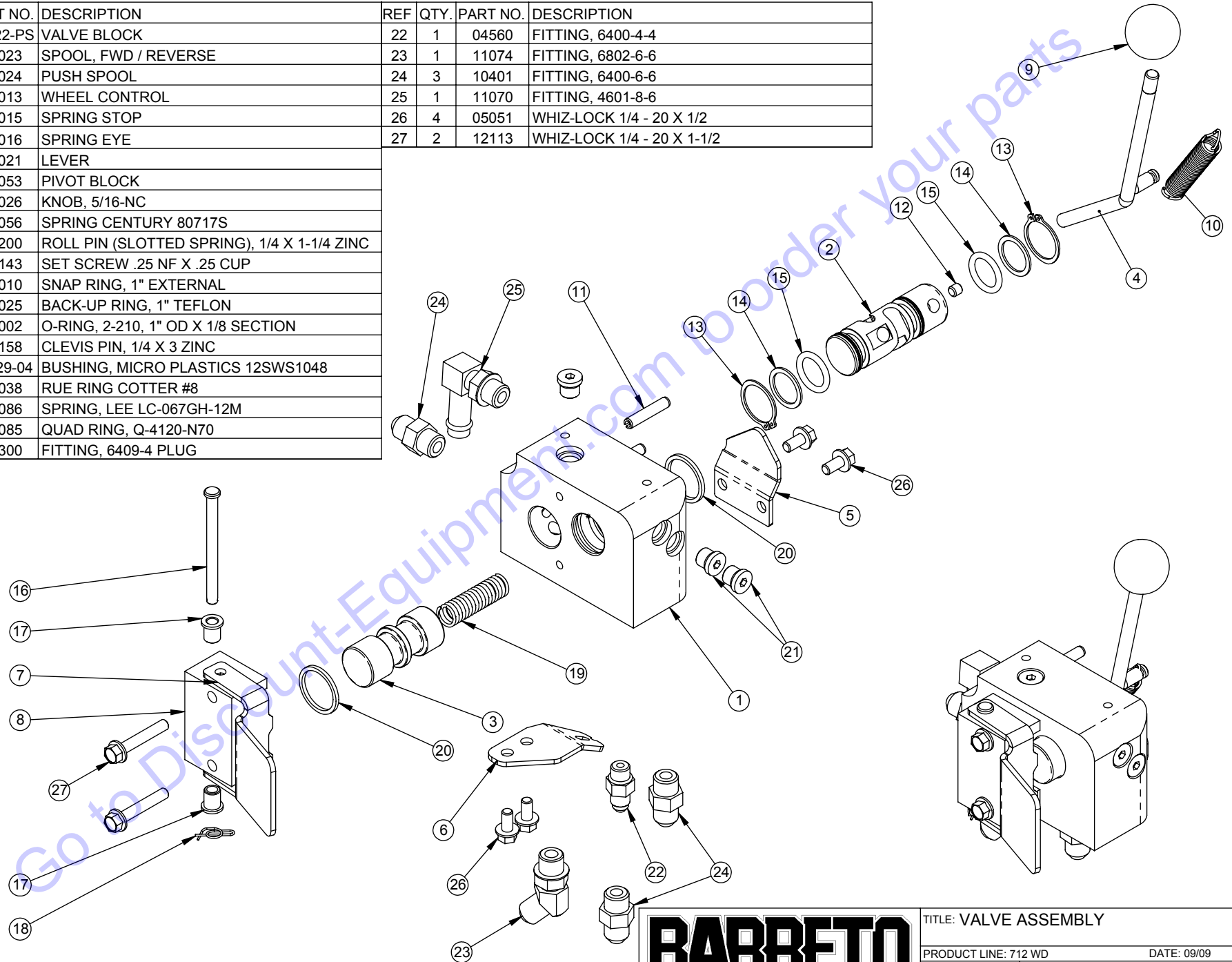
PRODUCT LINE: 712

SCALE: 1:8

SHEET 1 OF 1

DWG# 00477 WD

| REF | QTY. | PART NO. | DESCRIPTION                                 | REF | QTY. | PART NO. | DESCRIPTION                |
|-----|------|----------|---|-----|------|----------|----------------------------|
| 1   | 1    | 12022-PS | VALVE BLOCK                                 | 22  | 1    | 04560    | FITTING, 6400-4-4          |
| 2   | 1    | 12023    | SPOOL, FWD / REVERSE                        | 23  | 1    | 11074    | FITTING, 6802-6-6          |
| 3   | 1    | 12024    | PUSH SPOOL                                  | 24  | 3    | 10401    | FITTING, 6400-6-6          |
| 4   | 1    | 12013    | WHEEL CONTROL                               | 25  | 1    | 11070    | FITTING, 4601-8-6          |
| 5   | 1    | 12015    | SPRING STOP                                 | 26  | 4    | 05051    | WHIZ-LOCK 1/4 - 20 X 1/2   |
| 6   | 1    | 12016    | SPRING EYE                                  | 27  | 2    | 12113    | WHIZ-LOCK 1/4 - 20 X 1-1/2 |
| 7   | 1    | 12021    | LEVER                                       |     |      |          |                            |
| 8   | 1    | 12053    | PIVOT BLOCK                                 |     |      |          |                            |
| 9   | 1    | 03026    | KNOB, 5/16-NC                               |     |      |          |                            |
| 10  | 1    | 12056    | SPRING CENTURY 80717S                       |     |      |          |                            |
| 11  | 2    | 05200    | ROLL PIN (SLOTTED SPRING), 1/4 X 1-1/4 ZINC |     |      |          |                            |
| 12  | 1    | 05143    | SET SCREW .25 NF X .25 CUP                  |     |      |          |                            |
| 13  | 2    | 05010    | SNAP RING, 1" EXTERNAL                      |     |      |          |                            |
| 14  | 2    | 03025    | BACK-UP RING, 1" TEFLON                     |     |      |          |                            |
| 15  | 2    | 03002    | O-RING, 2-210, 1" OD X 1/8 SECTION          |     |      |          |                            |
| 16  | 1    | 05158    | CLEVIS PIN, 1/4 X 3 ZINC                    |     |      |          |                            |
| 17  | 2    | 03029-04 | BUSHING, MICRO PLASTICS 12SWS1048           |     |      |          |                            |
| 18  | 1    | 05038    | RUE RING COTTER #8                          |     |      |          |                            |
| 19  | 1    | 12086    | SPRING, LEE LC-067GH-12M                    |     |      |          |                            |
| 20  | 2    | 12085    | QUAD RING, Q-4120-N70                       |     |      |          |                            |
| 21  | 3    | 03300    | FITTING, 6409-4 PLUG                        |     |      |          |                            |



**BARRETO**

TITLE: VALVE ASSEMBLY

PRODUCT LINE: 712 WD

DATE: 09/09

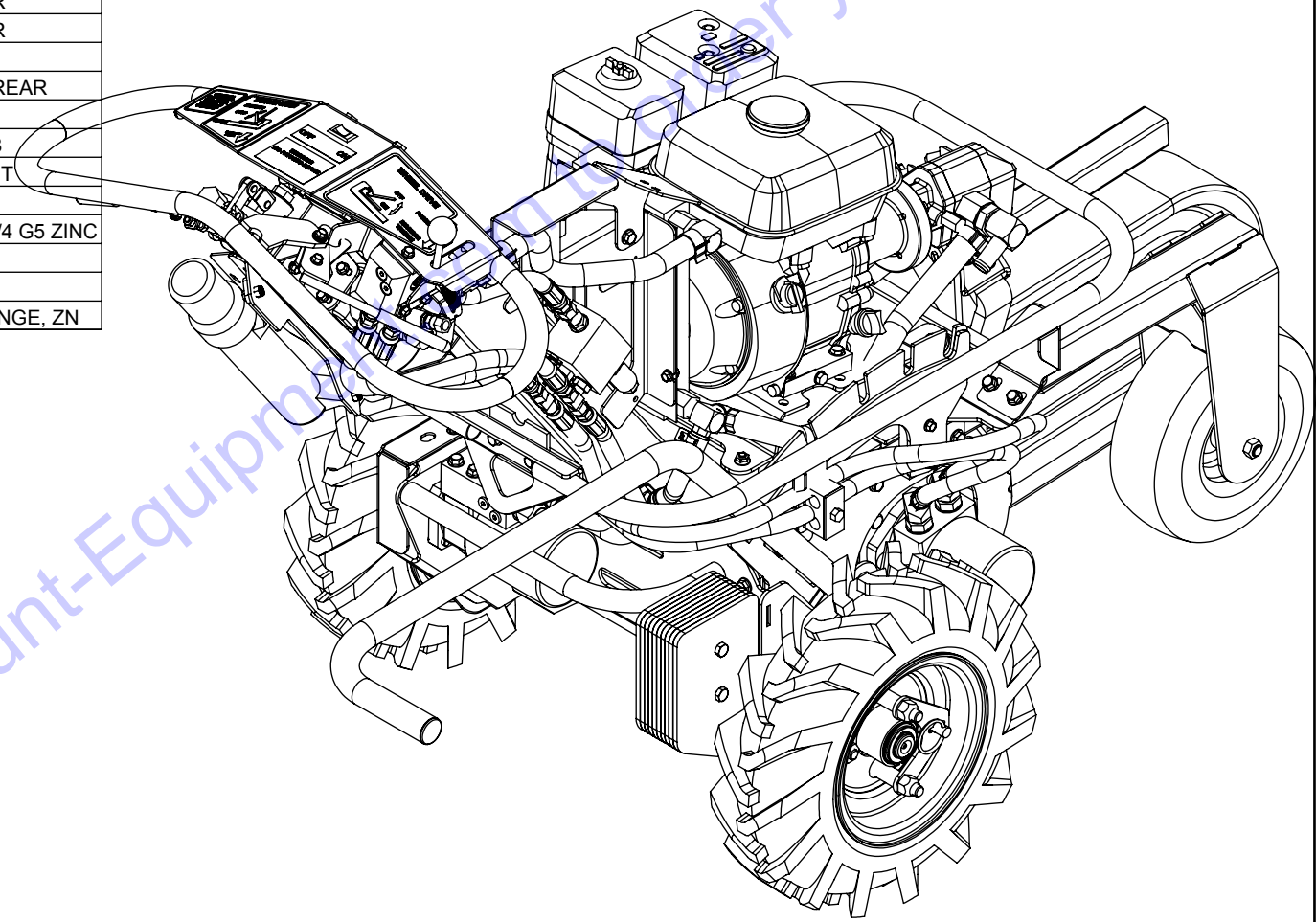
SCALE: 1:3

SHEET 1 OF 1

DWG# 00480-PS

| TEM NO. | QTY. | PART NO.  | DESCRIPTION                              |
|---------|------|-----------|--|
| 1       | 1    | 00472     | BODY                                     |
| 2       | 1    | 00474 WD  | CONTROLS, W/ WHEEL DRIVE                 |
| 3       | 1    | 00475-WDH | ENGINE & PUMP, WD                        |
| 4       | 1    | 00476 R1  | FRONT END                                |
| 5       | 1    | 00477 WD  | WHEEL DRIVE                              |
| 6       | 1    | 11986     | ENGINE GUARD                             |
| 7       | 1    | 12096     | SHIELD                                   |
| 8       | 1    | 11908     | SHIELD SPACER                            |
| 9       | 1    | 11983     | TUBE CLAMP, 5/8"                         |
| 10      | 1    | 11967     | HOSE, UNLOADER TEE / VALVE, 3/8          |
| 11      | 1    | 11968     | HOSE, CH. VALVE TO CH. MOTOR             |
| 12      | 1    | 11969     | HOSE, CH. VALVE TO CH. MOTOR             |
| 13      | 1    | 11990     | HOSE, SEQ. 3 / WHEEL MOTOR B             |
| 14      | 1    | 11990     | HOSE, UNLOADER / W. MOTOR, REAR          |
| 15      | 1    | 12027     | HOSE, PUMP / DRIVE VALVE, 1/4"           |
| 16      | 1    | 12028     | HOSE, PUMP / UNLOADER EL, 3/8            |
| 17      | 1    | 12029     | HOSE, VALVE / UNLOADER, RIGHT            |
| 18      | 1    | 12029     | HOSE, VALVE / UNLOADER, LEFT             |
| 19      | 1    | 05054     | HH CAP SCREW, 5/16-18 NC X 1-3/4 G5 ZINC |
| 20      | 6    | 05131     | HHFS 5/16-18 X 3/4, G8, ZN               |
| 21      | 1    | 05541     | WASHER, 5/16 FENDER ZINC                 |
| 22      | 7    | 05364     | NUT, 5/16-18 NC, SERRATED FLANGE, ZN     |

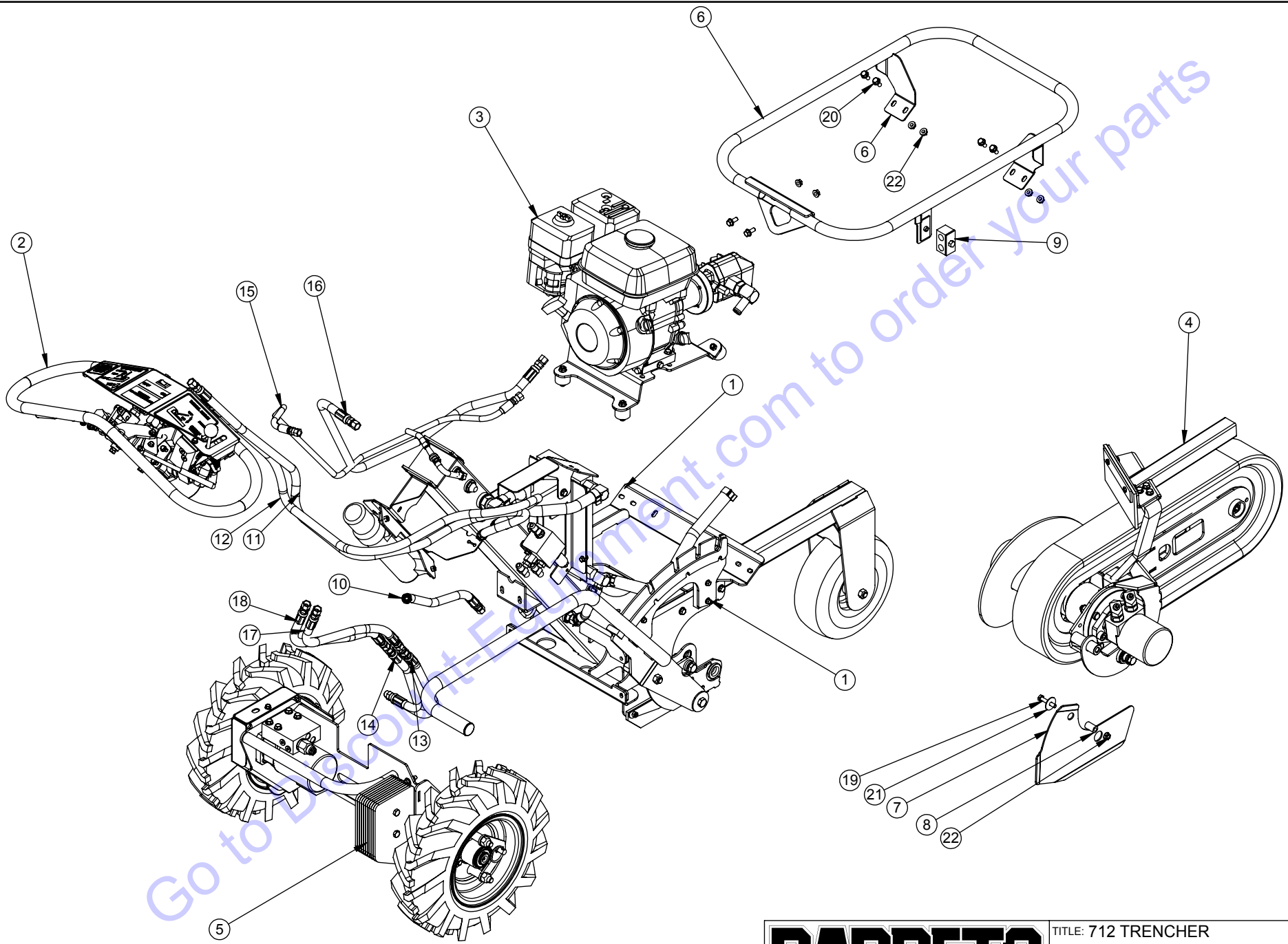
|              |         |
|--------------|---------|
| RELEASE DATE | 9/21/10 |
| REVISED DATE | 6/28/16 |
| REVISION #   | 0       |



Go to Discount-Equipment.com to order your parts

# BARRETO

|                            |             |
|----------------------------|-------------|
| TITLE: 712 TRENCHER        |             |
| PRODUCT LINE: 712 TRENCHER |             |
| SCALE: 1:8                 | DWG# 712 WD |
| SHEET 1 OF 2               |             |



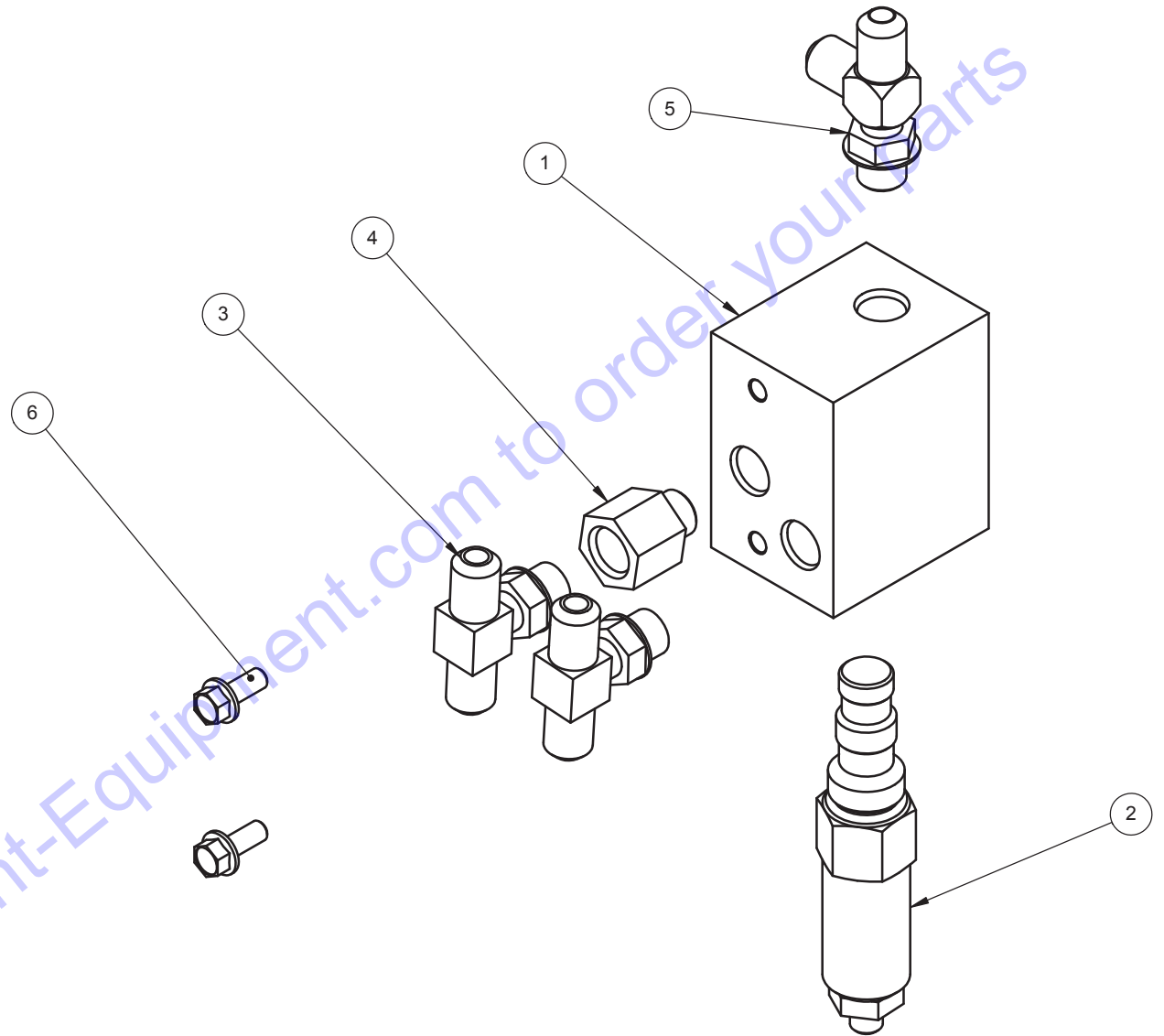
Go to [www.BarretoEquipment.com](http://www.BarretoEquipment.com) to order your parts

**BARRETO**

|                            |             |
|----------------------------|-------------|
| TITLE: 712 TRENCHER        |             |
| PRODUCT LINE: 712 TRENCHER |             |
| SCALE: 1:12                | DWG# 712 WD |
| SHEET 2 OF 2               |             |



| REF | QTY. | PART NO. | DESCRIPTION                     |
|-----|------|----------|---------------------------------|
| 1   | 1    | 12081    | VALVE BLOCK                     |
| 2   | 1    | 4602     | UNLOADER VALVE, CP240-2         |
| 3   | 2    | 10409    | FITTING, 6803-6-6-6             |
| 4   | 1    | 12047    | FITTING, 6410-6-6               |
| 5   | 1    | 04228    | FITTING, 6804-6-6-6             |
| 6   | 2    | 05069    | WHIZ LOCK, 1/4-20 NC X 5/8 ZINC |



**BARRETO**

TITLE: UNLOADER VALVE

PRODUCT LINE: 712 WD

DATE: 9/29/10

SCALE: 1:2

SHEET 1 OF 1

DWG# 00481

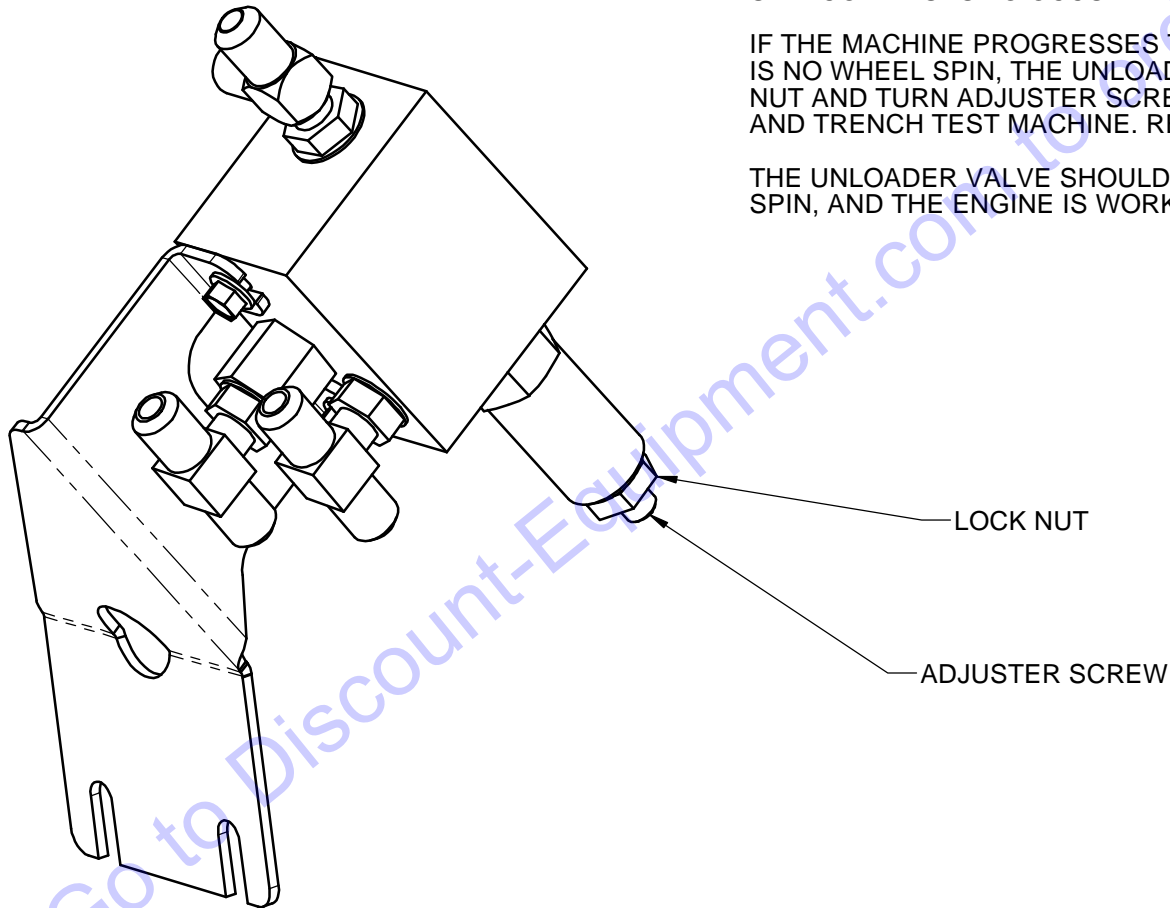
## WHEEL DRIVE UNLOADER ADJUSTMENT

THE 712MT IS EQUIPPED WITH AN UNLOADER VALVE WHICH CONTROLS THE WHEEL SPEED WHILE THE MACHINE IS TRENCHING. THIS VALVE IS LOCATED ON THE RIGHT SIDE OF THE MACHINE, BEHIND THE ENGINE.

IF THE WHEELS SPIN EXCESSIVELY, THE UNLOADER VALVE IS SET TOO HIGH. LOOSEN LOCK NUT AND TURN ADJUSTER SCREW OUT 1/2 TURN. TIGHTEN LOCK NUT AND TRENCH TEST MACHINE. REPEAT ADJUSTMENT IF WHEEL SPIN CONTINUES TO OCCUR.

IF THE MACHINE PROGRESSES TOO SLOWLY WHEN TRENCHING AND THERE IS NO WHEEL SPIN, THE UNLOADER VALVE IS SET TOO LOW. LOOSEN LOCK NUT AND TURN ADJUSTER SCREW IN 1/4 TO 1/2 TURN. TIGHTEN LOCK NUT AND TRENCH TEST MACHINE. REPEAT ADJUSTMENT IF NECESSARY.

THE UNLOADER VALVE SHOULD BE ADJUSTED SO THERE IS MINIMAL WHEEL SPIN, AND THE ENGINE IS WORKED, BUT NOT OVERLOADED.



**BARRETO**

TITLE: UNLOADER VALVE ADJUSTMENT

PRODUCT LINE: 712 MT

DATE:

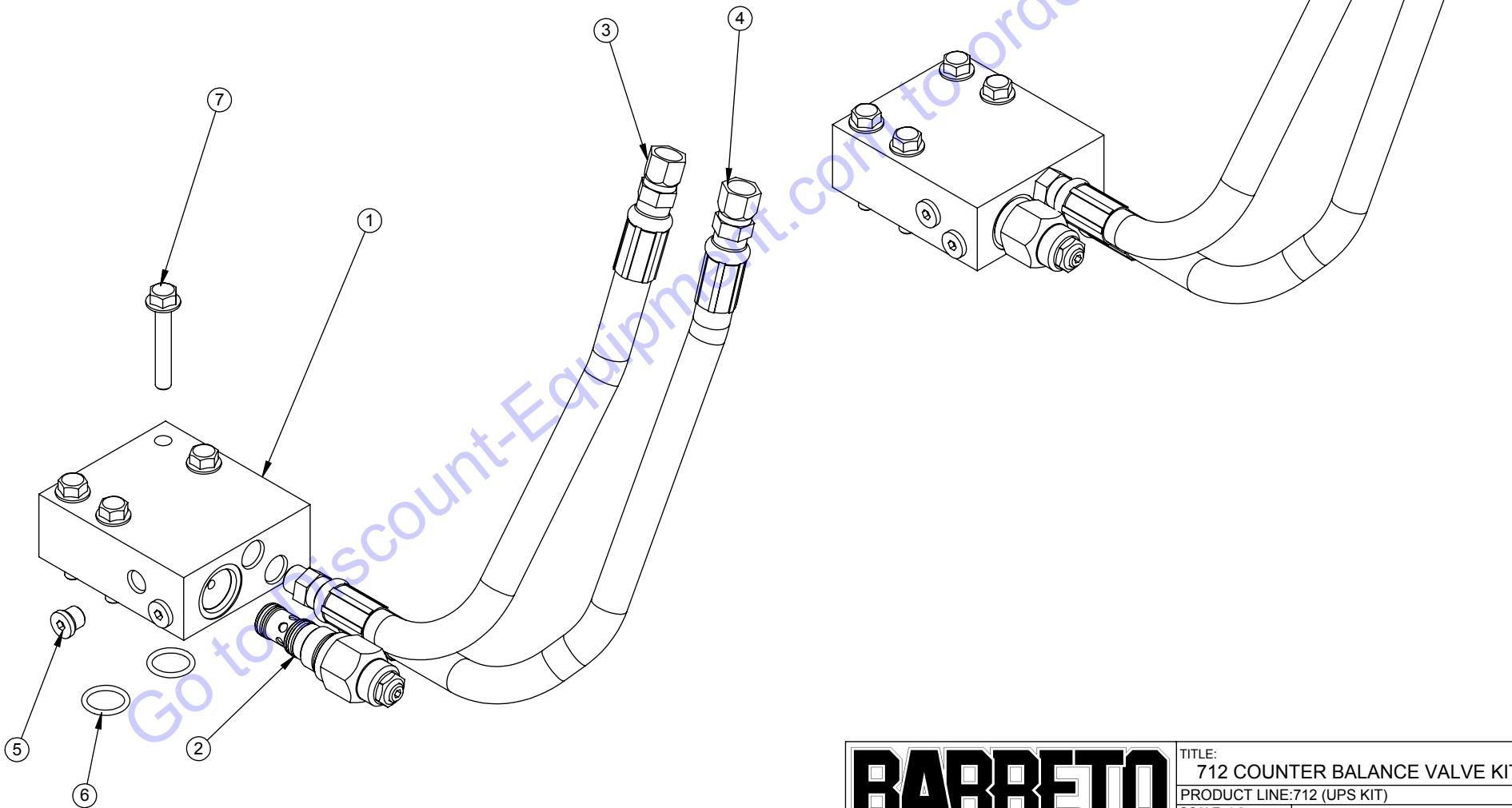
SCALE: 1:2

DWG#

SHEET 1 OF 1

| ITEM NO. | QTY. | PART NO. | DESCRIPTION                           |
|----------|------|----------|---------------------------------------|
| 1        | 1    | 12052B   | C-BALANCE MANIFOLD, SDC10-3S          |
| 2        | 1    | 04405    | C-BALANCE CARTRIDGE, CB10-HV          |
| 3        | 1    | 11990    | HOSE, UNLOADER / W. MOTOR, REAR       |
| 4        | 1    | 11990    | HOSE, SEQ. 3 / WHEEL MOTOR B          |
| 5        | 2    | 03300    | FITTING, 6409-4 PLUG                  |
| 6        | 2    | 03225    | O-RING, 2-116N70, 15-16 OD X 3/32 SEC |
| 7        | 4    | 05566    | HHFS 5/16-18 X 2, G5, ZN              |

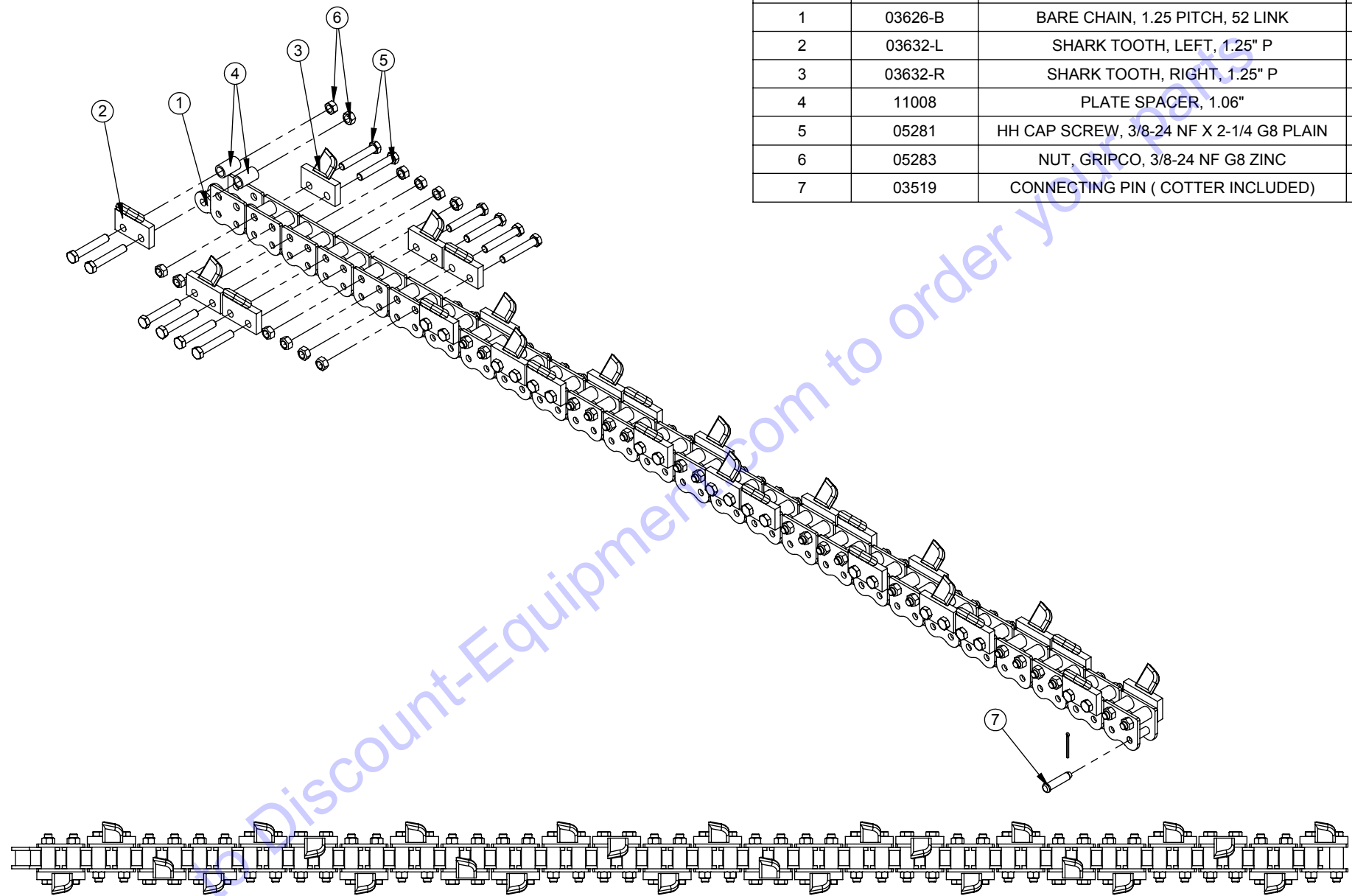
|              |        |
|--------------|--------|
| RELEASE DATE | 9/7/16 |
| REVISED DATE | NEW    |
| REVISION #   | 0      |



# BARRETO

TITLE: 712 COUNTER BALANCE VALVE KIT  
 PRODUCT LINE: 712 (UPS KIT)  
 SCALE: 1:3  
 SHEET 1 OF 1

DWG# 0047CB-K



| ITEM NO. | PART NUMBER | DESCRIPTION                              | QTY. |
|----------|-------------|--|------|
| 1        | 03626-B     | BARE CHAIN, 1.25 PITCH, 52 LINK          | 1    |
| 2        | 03632-L     | SHARK TOOTH, LEFT, 1.25" P               | 13   |
| 3        | 03632-R     | SHARK TOOTH, RIGHT, 1.25" P              | 13   |
| 4        | 11008       | PLATE SPACER, 1.06"                      | 52   |
| 5        | 05281       | HH CAP SCREW, 3/8-24 NF X 2-1/4 G8 PLAIN | 52   |
| 6        | 05283       | NUT, GRIPCO, 3/8-24 NF G8 ZINC           | 52   |
| 7        | 03519       | CONNECTING PIN ( COTTER INCLUDED)        | 1    |

ESTIMATED SHIPPING WEIGHT: 40 LBS

**BARRETO**

TITLE: CHAIN, 18" 26 STA 4" SHARKBOLT  
 PRODUCT LINE: TRENCHERS 912, 712 DATE: 03/20/2014  
 SCALE: 1:7  
 SHEET 1 OF 1 DWG# 03626-4SB

# BARRETO 712/912 TRENCHER CHAIN TYPES / DESCRIPTIONS

## **STANDARD CUP CHAIN** (AKA Skip Tooth)

This chain has a cup tooth on every other link.

### **Where to use it**

This chain is most effective in loamy soil - soil that is packable into clods. It is also more effective in clay or "gumbo" soil that is sticky and clings to the chain. The space between the cups allows the soil to let go instead of running around with the chain as a slurry which prevents effective digging.



## **DOUBLE CUP CHAIN**

This chain has a cup tooth on every link.

### **Where to use it**

This chain is best for sand and dry, loose soil that has a tendency to fall back into the trench. The extra cups provide for better clean-out.



## **COMBO/SHARK CHAIN**

This chain has an alternating pattern of cup and Shark teeth.

### **Where to use it.**

Use this chain in pretty much the same conditions as the standard combo chain. Although not as aggressive, the Shark teeth last longer and do not fall off. This is our most popular chain.



## **SHARK CHAIN**

The teeth on this chain are all Shark teeth that are welded onto the chain. Replacement teeth are not available for this chain.

### **Where to use it.**

This chain can be used in the most adverse soils. It is good in rocky soil, "cliché", limestone, hard-pan and any other hard to dig soils. It does not clean out well in sandy or dry, loose, loamy soil. This is not the fastest but it is the most durable chain available. It is not uncommon for the teeth to outlast the chain rollers. When the rollers wear out, the complete chain must be replaced.



## **BOLT-ON SHARK CHAIN**

This chain utilizes a standard chain blank and has Shark teeth that are bolted to the chain blank.

### **Where to use it.**

This chain is good in all the conditions described for the Shark chain. The advantage is the teeth can be removed when the chain wears out and can be used on a new blank. It is not uncommon for the teeth to last through two chains.



**NOTE: The 712 trencher chains are available in 12" & 18" lengths and 4" & 5" widths. The 912 chains are available in 12", 18", & 24" lengths and 4" & 6" widths.**



[www.discount-equipment.com](http://www.discount-equipment.com)

# PARTS FINDER

**Search Website  
by Part Number**



**Search Manual  
Library For Parts  
Manual & Lookup Part  
Numbers – Purchase  
or Request Quote**

**Search Manuals**

Enter your information to help us find the right parts manual for your machine.

\* Brand:

\* Model:

\* Serial:

\* Part Number:

SEARCH

**Can't Find Part or  
Manual? Request Help  
by Manufacturer,  
Model & Description**

**Parts Order Form**

Please fill in the following information to help us find the right part for your machine.

|               |                      |
|---------------|----------------------|
| Manufacturer: | <input type="text"/> |
| Model:        | <input type="text"/> |
| Description:  | <input type="text"/> |
| Part Number:  | <input type="text"/> |
| Quantity:     | <input type="text"/> |
| Notes:        | <input type="text"/> |

REQUEST HELP

Discount-Equipment.com is your online resource for quality parts & equipment.

Florida: **561-964-4949** Outside Florida TOLL FREE: **877-690-3101**

**Need parts?**

Click on this link: <http://www.discount-equipment.com/category/5443-parts/> and choose one of the options to help get the right parts and equipment you are looking for. Please have the machine model and serial number available in order to help us get you the correct parts. If you don't find the part on the website or on one of the online manuals, please fill out the request form and one of our experienced staff members will get back to you with a quote for the right part that your machine needs.

We sell worldwide for the brands: Genie, Terex, JLG, MultiQuip, Mikasa, Essick, Whiteman, Mayco, Toro Stone, Diamond Products, Generac Magnum, Airman, Haulotte, Barreto, Power Blanket, Nifty Lift, Atlas Copco, Chicago Pneumatic, Allmand, Miller Curber, Skyjack, Lull, Skytrak, Tsurumi, Husquvarna Target, Stow, Wacker, Sakai, Mi-T-M, Sullair, Basic, Dynapac, MBW, Weber, Bartell, Bennar Newman, Haulotte, Ditch Runner, Menegotti, Morrison, Contec, Buddy, Crown, Edco, Wyco, Bomag, Laymor, EZ Trench, Bil-Jax, F.S. Curtis, Gehl Pavers, Heli, Honda, ICS/PowerGrit, IHI, Partner, Imer, Clipper, MMD, Koshin, Rice, CH&E, General Equipment, Amida, Coleman, NAC, Gradall, Square Shooter, Kent, Stanley, Tamco, Toku, Hatz, Kohler, Robin, Wisconsin, Northrock, Oztec, Toker TK, Rol-Air, APT, Wylie, Ingersoll Rand / Doosan, Innovatech, Con X, Ammann, Mecalac, Makinex, Smith Surface Prep, Small Line, Wanco, Yanmar