

DOT Trailers Repair Parts

2010 Tag Platform and Gooseneck Trailer	34
Gooseneck Trailer	35
Platform Trailer	36
Leg Tank Tag Trailer	37
Elliptical Tank Tag Trailer	38
1600 Gooseneck Tandem Axle Trailer	39
1600 Tag & Platform Tandem Axle Trailer	40
Pump and Plumbing, 2010 Platform Trailer	41
Pump and Plumbing, Tag Trailer	42
Pump and Plumbing, Gooseneck Trailer	43
Lights & Breakaway Brake System	44
Electrical Schematic	45
Mix N'Fill	46
Sight Gauge	47
Axles & Hubs	48 - 50
Double Cone Trailer	51
Double Cone Pump Kits	52
Double Cone Plumbing	53 - 54
Double Cone Axle/Hydraulics	55
Double Cone Hub Assembly	56
CDS/John Blue Centrifugal Pump	57
Banjo Cast Iron Transfer Pump	58
Banjo Poly Transfer Pump	59

Discount Equipment

Discount-Equipment.com is your online resource for commercial and industrial quality parts and equipment sales.

Locations:

Florida (West Palm Beach): [561-964-4949](tel:561-964-4949)

Outside Florida TOLL FREE: [877-690-3101](tel:877-690-3101)

Need parts? Check out our website at www.discount-equipment.com

Can't find what you need?

Click on this link: <http://www.discount-equipment.com/category/5443-parts/> and fill out the request form.

Please have the machine model and serial number available in order to help us get you the correct parts. One of our experienced staff members will get back to you with a quote for the right part that your machine needs.

We sell worldwide for the brands: Genie, Terex, JLG, MultiQuip, Mayco, Toro/Stone, Diamond Products, Magnum, Airman, Mustang, Power Blanket, Nifty Lift, Atlas Copco, Chicago Pneumatic, Allmand Brothers, Essick, Miller Spreader, Skyjack, Lull, Skytrak, Tsurumi, Husquvarna/Target, Whiteman-Concrete/Mortar, Stow-Concrete/Mortar, Baldor, Wacker, Sakai, Snorkel, Upright, Mi-T-M, Sullair, Neal, Basic, Dynapac, MBW, Weber, Bartell, Bennar Newman, Haulotte, Ditch Runner, Blaw-Knox, Himoina, Best, Buddy, Crown, Edco, Wyco, Bomag, Laymor, Terremite, Barreto, EZ Trench, Takeuchi, Basic, Bil-Jax, Curtis, Gehl, Heli, Honda, ICS/PowerGrit, Puckett, Waldon, ASV, IHI, Partner, Imer, Clipper, MMD, Koshin, Rice, Gorman Rupp, CH&E, Cat Pumps, Comet, General Pump, Giant, AMida, Coleman, NAC, Gradall, Square Shooter, Kent, Stanley, Tamco, Toku, Hatz, Kohler, Robin, Wisconsin, Northrock, Oztec, Toker TK, Rol-Air, Small Line, Wanco, Yanmar

New Equipment - Used Equipment - Rental Equipment - Parts and Accessories

Discount Equipment

www.discount-equipment.com

561-964-4949

Parts: wbparts@Discount-Equipment.com

Sales: info@Discount-Equipment.com



2010 Trailer

D202010T-P-IH-BLK
D202010G-P

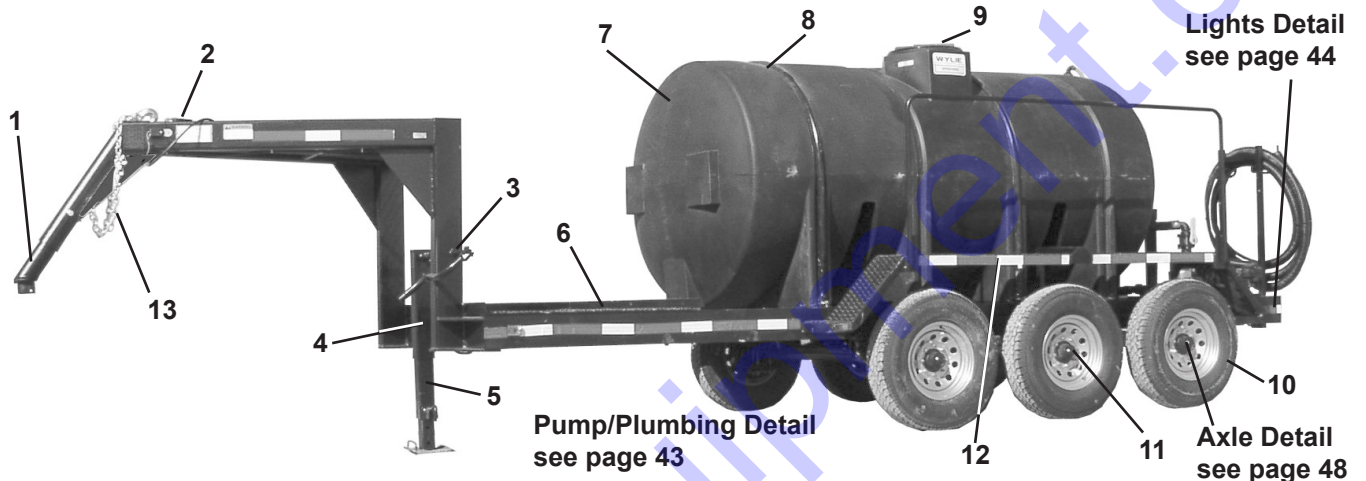
2010 DOT Tag Platform Trailer
2010 DOT Gooseneck Trailer



No.	Part No.	Description	No.	Part No.	Description
1	W127802-7	HD Dropleg Jack Kit (Tag)	8	63846	Band for 2010 Tank
	182800	10K#, Dropleg Jack (GN)	9	63485	16" Tank Lid
	W122103	Jack Connection Tube (GN)	10	W1241-STEP/7	Bolt-on Step
	W122108	28" Jack Extension Shaft (GN)	11	W120375	Fender
2	SC70-49	Safety Chain Kit (Tag)	12	235/75R17.5	235x75R17.5 on 8/6.5" BC, 4.89"
	SC70-39	Safety Chain Kit (GN)	13	10K915660865EBSX-Q	10K E-Brake Spring Axle, 91.5" HF (Tag)
3	14040-81K	21K 2 5/16" EZ Latch Coupler (Tag)		10K920660865EBSX	10K E-Brake Spring Axle, 92" HF (GN)
4	IH-3001	Intelli-Hitch 23K GVWR Hitch (Tag)	14	W124801	Frame (Tag)
5	WMC812	IH Receiver Tube Adapter (Tag)		W128501	Frame (GN)
6	DOT-BA-K	Elec. Breakaway Kit	15	67670	Operator's Manual Canister
7	43787	2,010 Gal. Leg Tank	16	79024	3" CDS/JB Pump w/ 13 HP Honda

D211600G-P
D141250G-P
D141025G-P

1600 DOT Gooseneck Trailer (shown)
1250 DOT Gooseneck Trailer
1025 DOT Gooseneck Trailer



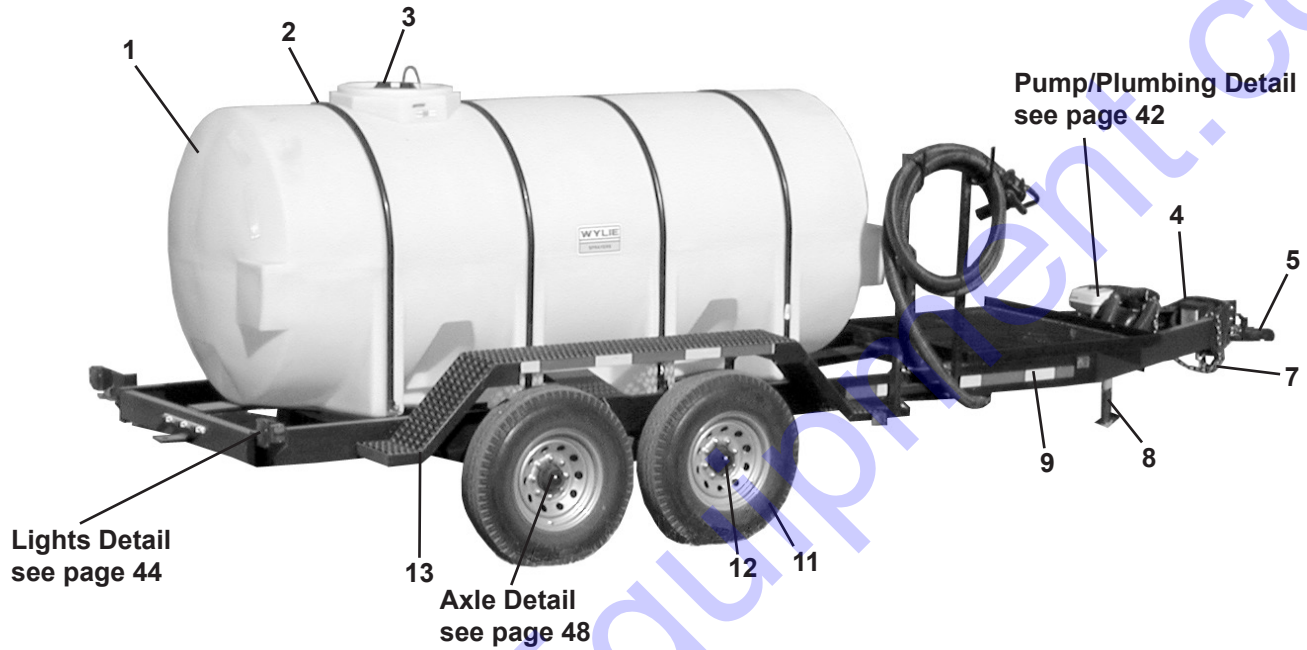
No.	Part No.	Description	No.	Part No.	Description
1	W122102	Gooseneck Ball Coupler	8	W124404	Hoop, 1,600 gal.
2	50-85-315	Breakaway Kit		W124302	Hoop, 1,250 gal.
3	W122108	Jack Handle Extension		W120502	Hoop, 1,025 gal.
4	W122103	Jack Connection Tube	9	352060	Tank Lid, 1,600, 1,250, 1,025
5	182800	HD Dropleg Jack	10	660865831314115	Wheel/Tire Ass'y.
6	W124602	Gooseneck Frame (1,600 gal.)	11	TS70895730865EBC	7,000# Elec. Brake Axle, 1,600, 1,250 gal.
	W124801	Gooseneck Frame (1,250 gal.)		TS70705525865EBC	7,000# Elec. Brake Axle, 1,025 gal.
	W125102	Gooseneck Frame (1,025 gal.)	12	W1203-T8/7	Fender Kit, 1,600 gal.
7	T1600LDBK	1,600 gal. Leg Tank (black)		W120364	LH Fender, 1,600 gal.
	T1600LDNK	1,600 gal. Leg Tank (white)		W120365	RH Fender, 1,600 gal.
	T1250LDBK	1,250 gal. Leg Tank (black)		W1203-T5/7	Fender Kit, 1,250 gal.
	T1250LDNK	1,250 gal. Leg Tank (white)		W1203-T5/6	Fender Kit, 1,025 gal.
	T1025LSBK	1,025 gal. Leg Tank (black)		W120358	LH Fender, 1,250, 1,025 gal.
	T1025LSNK	1,025 gal. Leg Tank (white)		W120359	RH Fender, 1,250, 1,025 gal.
			13	TSC7375X36CS	Safety Chain



Leg Platform Trailer

D211600T-P
D141250T-P
D141025T-P

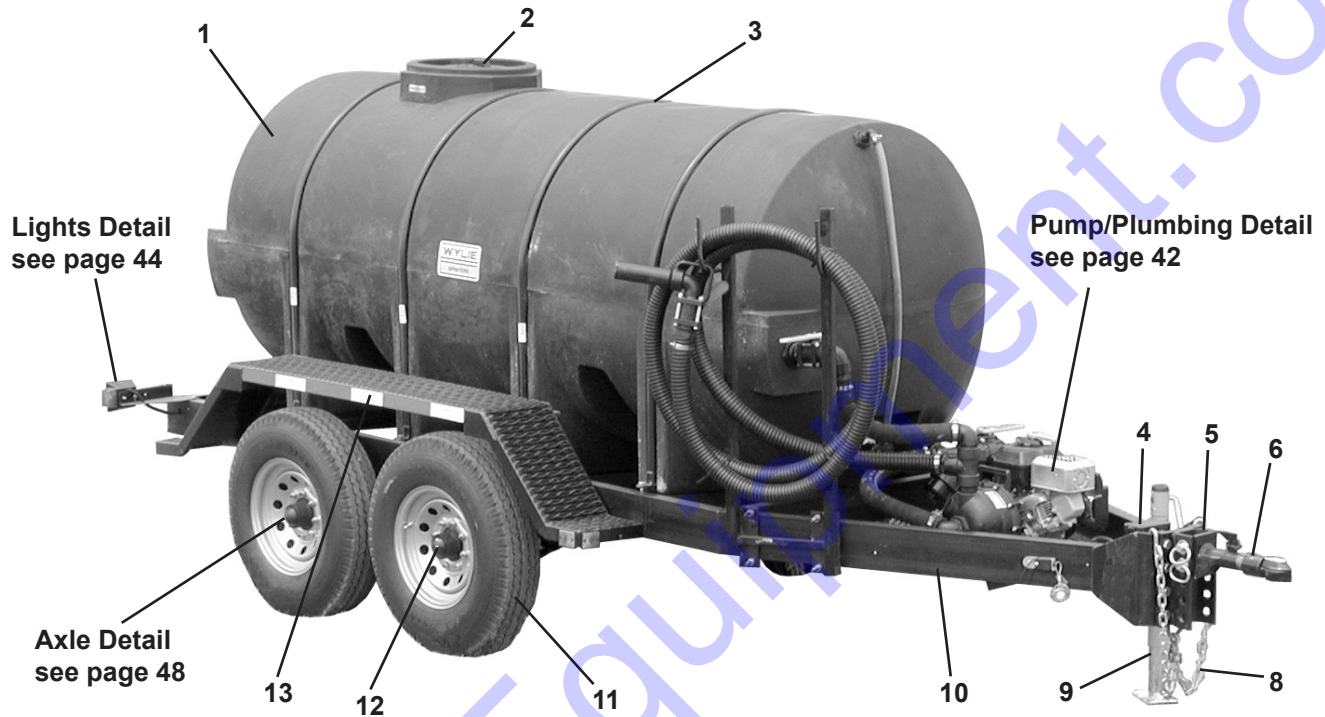
1600 DOT Platform Tag Trailer
1250 DOT Platform Tag Trailer
1025 DOT Platform Tag Trailer (shown)



No.	Part No.	Description	No.	Part No.	Description
1	T1600LDBK	1,600 gal. Leg Tank (black)	9	W124401	Platform Tag Frame (1,600 gal.)
	T1600LDNK	1,600 gal. Leg Tank (white)		W127201	Platform Tag Frame (1,250 gal.)
	T1250LDBK	1,250 gal. Leg Tank (black)		W124201	Platform Tag Frame (1,025 gal.)
	T1250LDNK	1,250 gal. Leg Tank (white)	11	660865831314115	Wheel/Tire Ass'y.
	T1025LSBK	1,025 gal. Leg Tank (black)	12	TS70895730865EBC	7,000# Elec. Brake Axle, 1,600, 1,250 gal.
	T1025LSNK	1,025 gal. Leg Tank (white)		TS70705525865EBC	7,000# Elec. Brake Axle, 1,025, gal.
2	W124404	Hoop, 1,600 gal.	13	W1203-T8/7	Fender Kit, 1,600 gal.
	W124305	Hoop, 1,250 gal.		W120364	LH Fender, 1,600 gal.
	W120502	Hoop, 1,025 gal.		W120365	RH Fender, 1,600 gal.
3	352060	Tank Lid, 1,600, 1,250, 1,025		W1203-T3/7	Fender Kit, 1,250 gal.
4	50-85-315	Breakaway Kit		W120353	LH Fender, 1,250 gal.
5	W1278-CP	Hitch Kit		W120354	RH Fender, 1,250 gal.
7	SC70-39	Safety Chain Kit		W1203-T1/6	Fender Kit, 1,025 gal.
8	W127802-7	Dropleg Jack, 1,600, 1,250 gal.		W120349	LH Fender, 1,025 gal.
8	W127802-6	Dropleg Jack, 1,025 gal.		W120350	RH Fender, 1,025 gal.

D141250T
D141025T

1250 DOT Tag Leg Trailer
1025 DOT Tag Leg Trailer (shown)



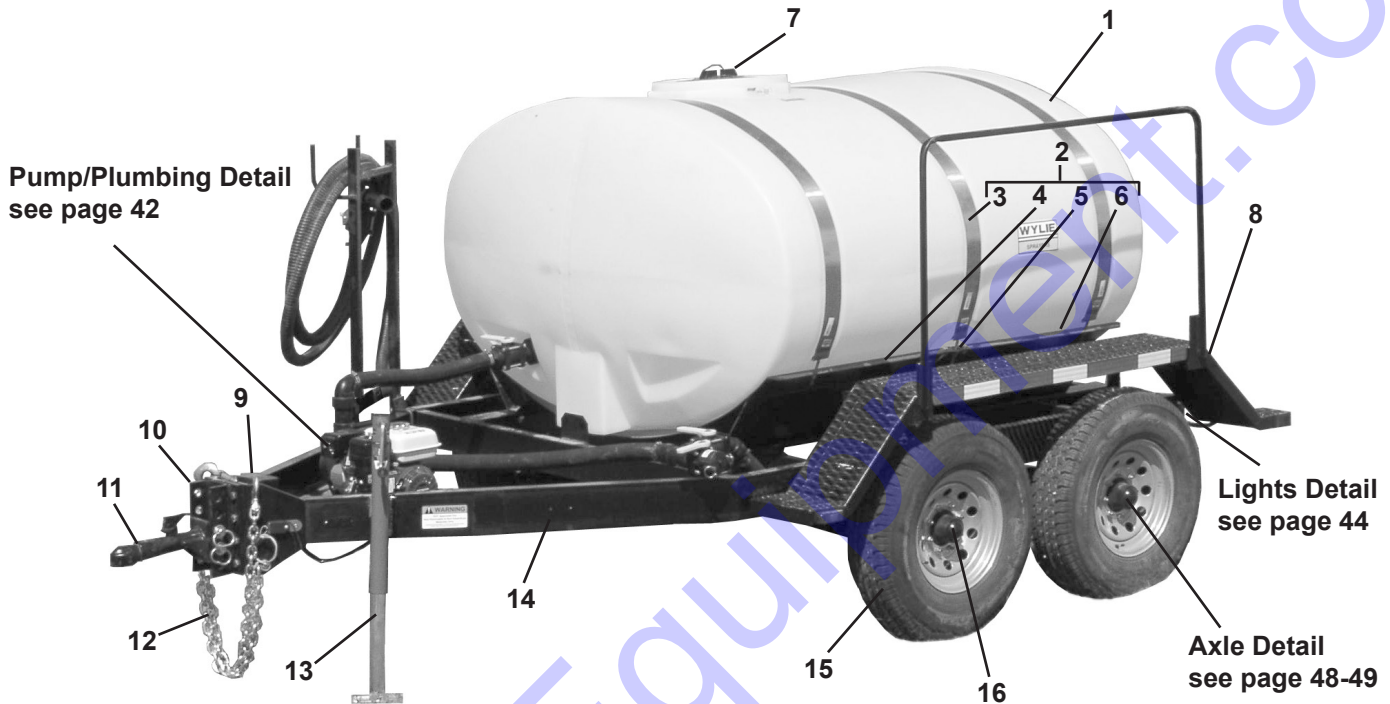
No.	Part No.	Description	No.	Part No.	Description
1	T1250LDBK	1,250 gal. Leg Tank (black)	9	35SQ15F-00	Sidewind Jack, 1,250 gal.
	T1250LDNK	1,250 gal. Leg Tank (white)		HD500-SWL-TMR-PZ-M	Sidewind Jack, 1,025 gal.
	T1025LSBK	1,025 gal. Leg Tank (black)	10	W124301	Tag Trailer Frame (1,250 gal.)
	T1025LSNK	1,025 gal. Leg Tank (white)		W124101	Tag Trailer Frame (1,025 gal.)
2	W124302	Hoop, 1,250 gal.	11	660865831314115	Wheel/Tire Ass'y.
	W124304	Hoop w/hook, 1,250 gal. (NS)	12	TS70895730865EBC	7,000# Elec. Brake Axle, 1,250 gal.
	W120502	Hoop, 1,025 gal.		TS70705525865EBC	7,000# Elec. Brake Axle, 1,025 gal.
	W120511	Hoop w/hook, 1,025 gal. (NS)	13	W1203-T3/6	Fender Kit, 1,250 gal.
3	352060	Tank Lid, 1,250, 1,025 gal.		W120353	LH Fender, 1,250 gal.
4	50-85-315	Breakaway Kit		W120354	RH Fender, 1,250 gal.
5	W121124-K	Hitch Kit		W1203-T1/6	Fender Kit, 1,025 gal.
6	07678-95	Adjustable Hitch, 2 5/16"		W120349	LH Fender, 1,025 gal.
8	SC70-39	Safety Chain Kit		W120350	RH Fender, 1,025 gal.
			--	W1241-STEP	Bolt on Step, 1,025 gal. (not shown)



Elliptical Tag Trailer

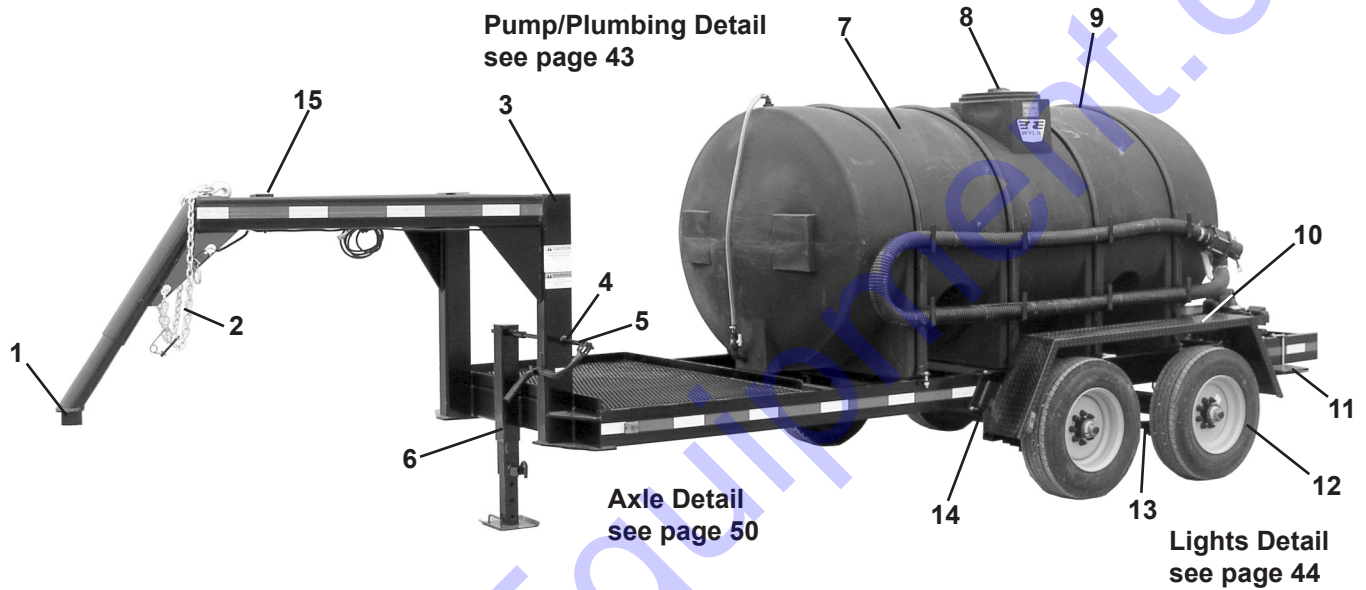
D141000T
D07500T
D07300T

1000 DOT Tag Elliptical Trailer (shown)
500 DOT Tag Elliptical Trailer
300 DOT Tag Elliptical Trailer



No.	Part No.	Description	No.	Part No.	Description
1	T1000HEBK	1,000 gal. Ellip. Tank (black)	8	W1203-T3/6	Fender Kit, 1,000 gal.
	T1000HENK	1,000 gal. Ellip. Tank (white)		W120353	LH Fender, 1,000 gal.
	T500HEBK	500 gal. Leg Tank (black)		W120354	RH Fender, 1,000 gal.
	T500HENK	500 gal. Leg Tank (white)		W1203-T2/6	Fender Kit, 500, 300 gal.
	T300HEBK	300 gal. Ellip. Tank (black)		W120351	LH Fender, 500, 300 gal.
	T300HENK	300 gal. Ellip. Tank (white)		W120352	RH Fender, 500, 300 gal.
2	W7124	Saddle Ass'y., 1,000 gal.	9	50-85-315	Breakaway Kit
	W7133	Saddle Ass'y., 500 gal.	10	W121124-K	Hitch Kit
	W7131	Saddle Ass'y., 300 gal.	11	07678-95	Adjustable Hitch, 2 5/16", 1,000 gal.
3	W720115	Tank Band, 1,000 gal.		09430-95	Adjustable Hitch, 2", 500 gal.
	W720109	Tank Band, 500 gal.		W121107	Adjustable Hitch, 2", 300 gal.
	W720129	Tank Band, 300 gal.	12	SC70-39	Safety Chain Kit, 1,000 gal.
4	W712403	Saddle Half w/ Sump, 1,000 gal.		SC43-39	Safety Chain Kit, 500, 300 gal.
5	W712405	Locking Clip, 1,000 gal.	13	HD500-SWL-TMR-PZ-M	Sidewind Jack, 1,000, 500, 300 gal.
6	W712404	Saddle Half w/o Sump, 1,000 gal.	14	W126501	Elliptical Tag Frame, 1,000 gal.
	W713301	Saddle, 500 gal.		W124501	Elliptical Tag Frame, 500, 300 gal.
	W713101	Saddle, 300 gal.	15	660865831314115	Wheel/Tire Ass'y., 1,000 gal.
7	LID10	Tank Lid		34774	Wheel/Tire Ass'y., 500, 300 gal.
			16	TS70895730865EBC	7,000# Elec. Brake Axle, 1,000 gal.
				TS35705525655EBX	3,500# Elec. Brake Axle, 500, 300 gal.

D201600G-P 1600 Gooseneck DOT Trailer (Tandem Axle)



No.	Part No.	Description
1	W122102	Gooseneck Ball Coupler
2	TSC7375X36CS	Safety Chain Kit
3	W127901	Frame
4	W122103	Jack Connection Tube
5	W122108	Jack Handle Extension
6	182800	HD Dropleg Jack
7	T1600LDBK	1,600 gal. Leg Tank (black)
	T1600LDNK	1,600 gal. Leg Tank (white)
8	352060	Tank Lid
9	W124404	Hoop, 1,600 gal. (double hook)
10	W1203T/7	Fender Kit
11	W1241-STEP/7	Step Kit
12	235/75R17.5	Tire/Wheel Combo 6000# - 235/75R17.5
13	APT1025HD4275	Hanger Kit, Tandem, Slipper Spring
14	10K915660865EBSX-Q	10K E-Brake Spring Axle
15	50-85-315	Breakaway Kit



1600 Tandem Trailer

D201600T-P
D201600T

1600 Tag Platform DOT Trailer (Tandem Axle)
1600 Tag DOT Trailer (Tandem Axle)



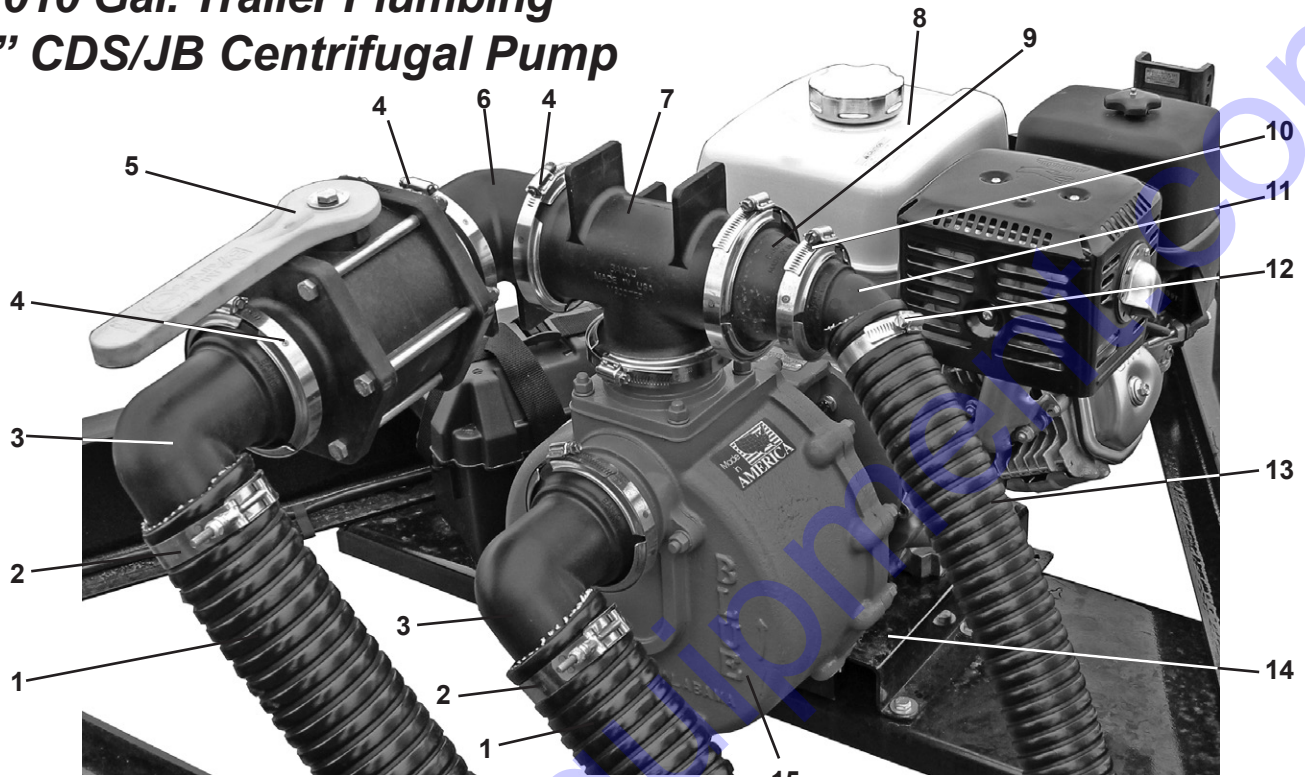
Pump/Plumbing Detail
see page 42

Lights Detail
see page 44

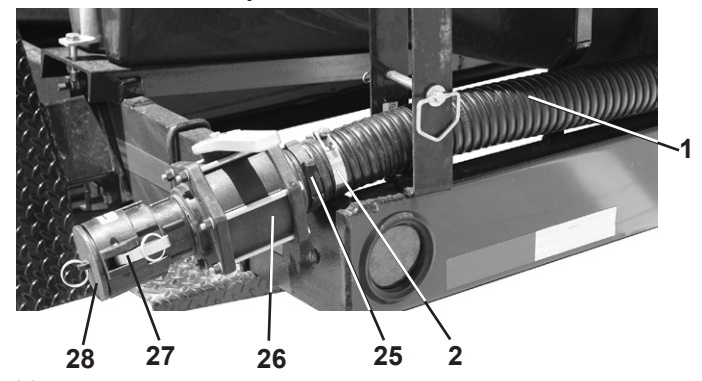
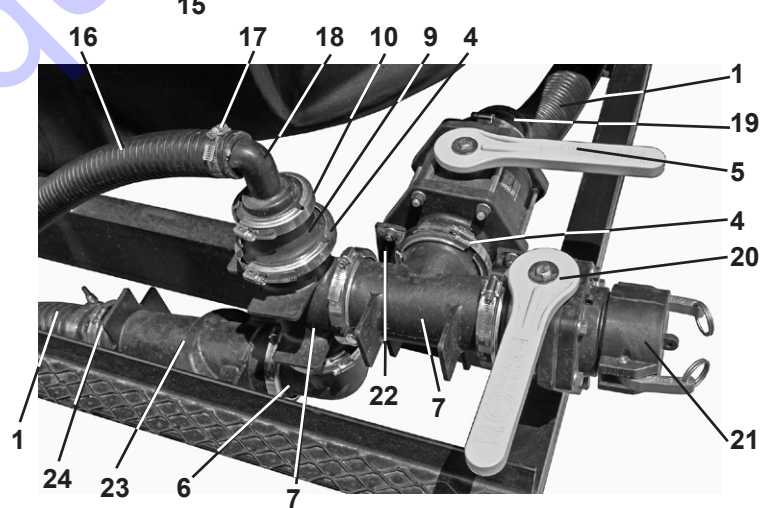
Axle Detail
see page 50

No.	Part No.	Description	No.	Part No.	Description
1	W-4425000317	Adjustable Hitch, 2 5/16"	8	W1241-STEP/7	Bolt-on Step
2	SC70-39	Safety Chain Kit	9	235/17R17.5	Wheel/Tire Ass'y.
3	35SQ15F-00	3,000# Jack	10	10K915660865EBSX-Q	10,000# Elec. Brake Axle
4	50-85-315	Breakaway Kit	11	W1203-T7/7	Fender Kit, 1,600 gal.
5	T1600LDBK	1,600 gal. Leg Tank (black)		W120362	LH Fender, 1,600 gal.
	T1600LDNK	1,600 gal. Leg Tank (white)		W120363	RH Fender, 1,600 gal.
6	W124405	Hoop, 1,600 gal.	12	W127801	Platform Tag Frame
7	KF15902HM	Tank Lid		W127701	Tag Frame

2,010 Gal. Trailer Plumbing 3" CDS/JB Centrifugal Pump

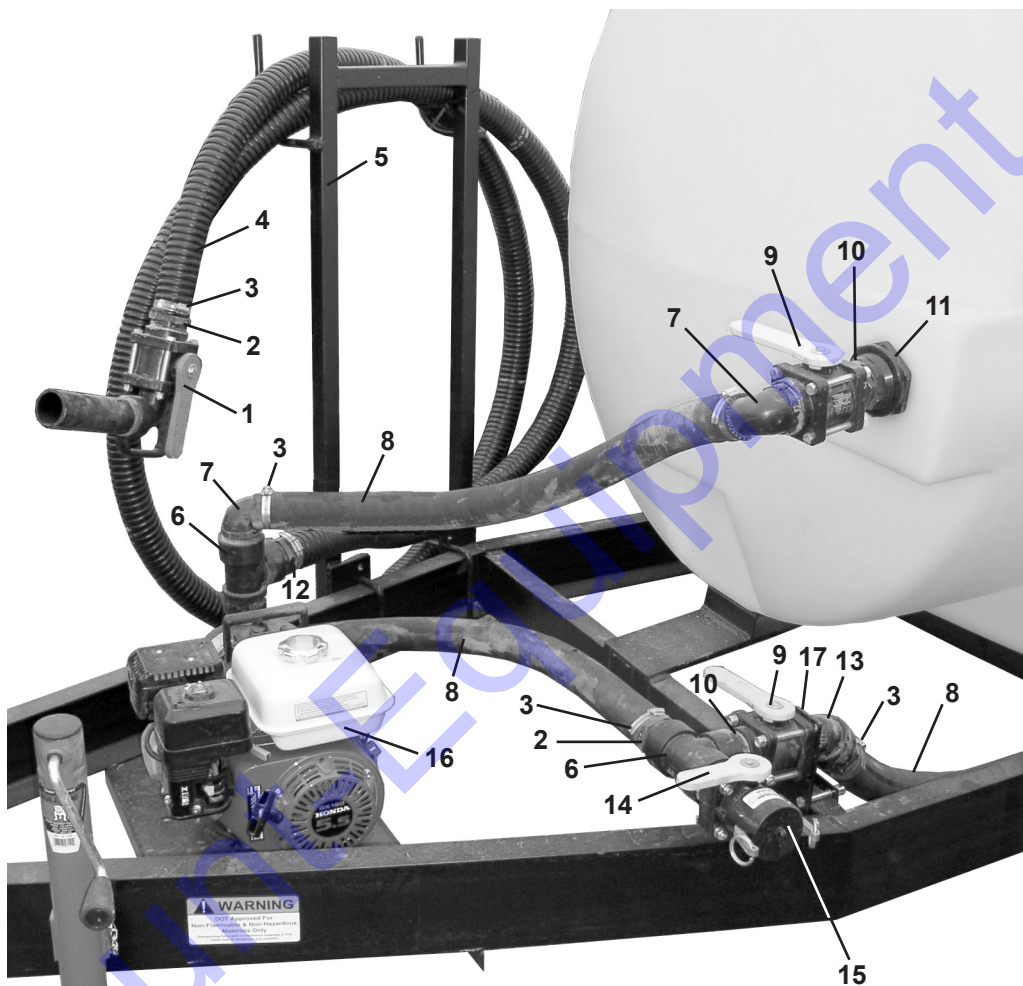


No.	Part No.	Description
1	HS2194	3" Kanaflex Hose
2	TC331	3" SS Super Clamp
3	M300BRB90	3" Manifold Hose Barb, 90°
4	FC300	3" Manifold Clamp
	300-G	3" Gasket EPDM
5	MV300CF	3" Manifold Ball Valve
6	M300CPG90	3" Manifold Coupling, 90°
7	M300TEE	3" Manifold Tee
8	GX390K1QAE2	13 HP Honda Elec Start
9	M300200CPG	3"x2" Manifold Reducer Coupling
10	FC200	2" Manifold Clamp
	150G	2" Gasket EPDM
11	M200BRB45	2" Manifold Hose Barb 45°
12	1036	2" Hose Clamp
13	HS6054	2" Kanaflex Hose
14	W9102-5	Pump/Engine Mount
15	SP-3350BSFLG	3" CDS/JB Centrifugal Pump
16	HS6052	1 1/4" Kanaflex Hose
17	1020	1 1/4" Hose Clamp
18	M200125BRB90	2" Manifold x 1 1/4" Hose Barb 90°
19	M300BRB45	3" Manifold Hose Barb 45°
20	MVSF300	3" Manifold x 3" Male Adapter Valve
21	300-CAP-PP	3" QC Cap
22	W221204	3" Full Port Valve Mount
23	MLS300-50	3" Manifold Line Strainer, 50 Mesh
24	M300BRB	3" Manifold Hose Barb
25	HB-300	3" Hose Barb
26	V-300FP	3" Ball Valve FPT
27	300-D-PP	3" Female Coupler x 3" FPT
28	300-PL-PP	3" Plug



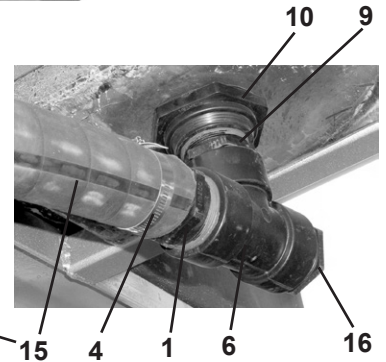
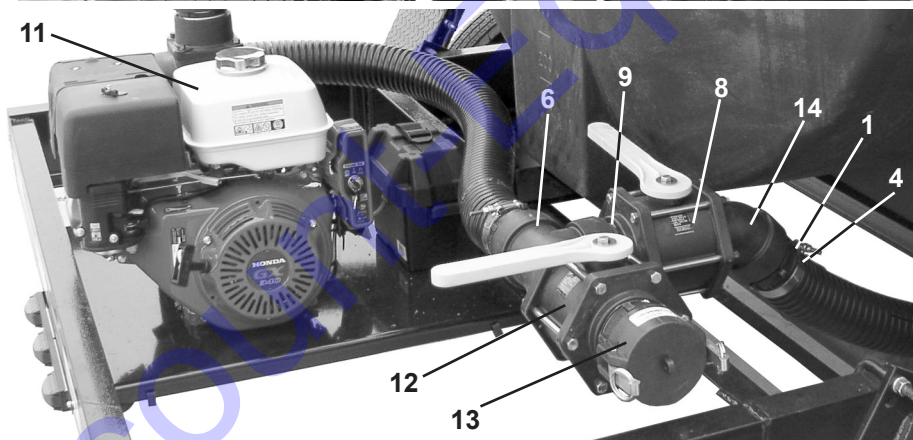
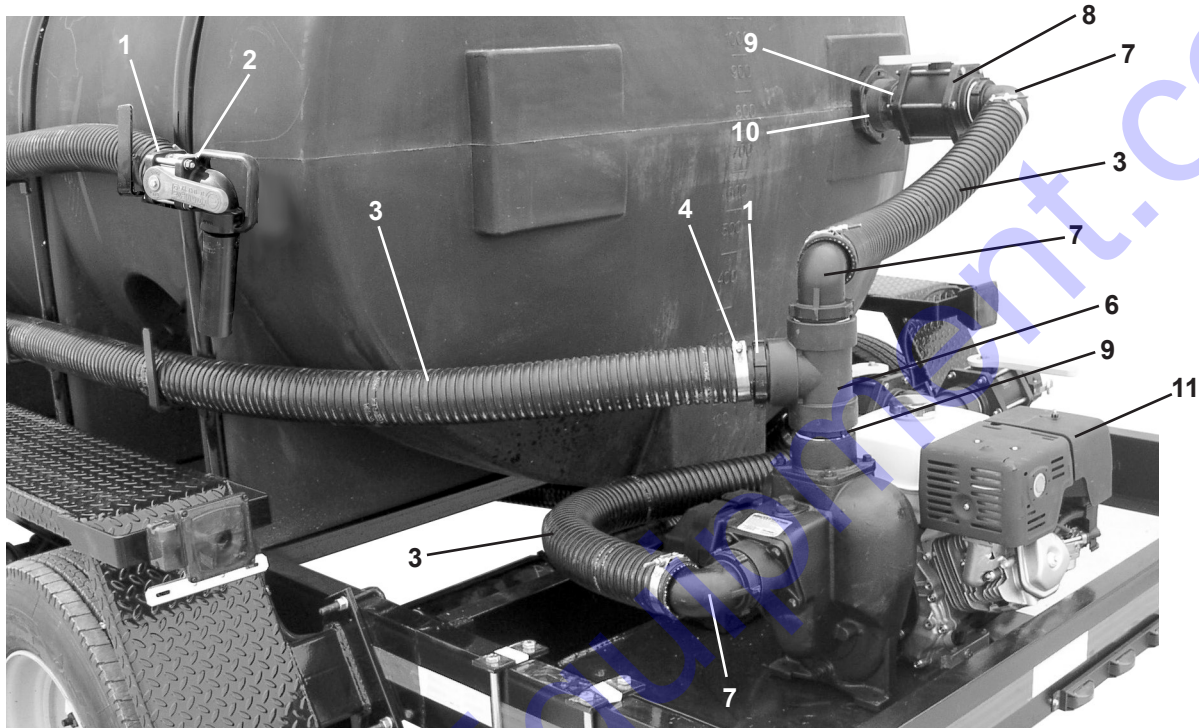


**Typical Tag Trailer Pump Plumbing
(with Quick Fill & Sparger option)**



No.	Part No.	Description	No.	Part No.	Description
1	VA-200	2" Ball Valve, Angle	12	HB200	2" Hose Barb
2	HB200	2" Hose Barb	13	SL200-45	2" Street EL, 45°
3	1036	2" Hose Clamp	14	VSFMT-200	2" Stubby Valve
4	HS6054	2" 390SD Black Hose	15	200-CAP-PP	2" QC Cap
5	W940107	Hose Rack	16	200PH-5	2" Poly Pump w/5 hp Honda Engine
6	TEE200	2" Tee		200P6PRO	2" Poly Pump w/6.5 hp B&S Engine
7	HB200-90	2" Hose Barb, 90°		200P6LCT	2" Poly Pump w/6 hp LCT Engine
8	12004001	2" Suction Hose		200PIH-5	2" Cast Pump w/5 hp Honda Engine
9	V-200	2" Ball Valve		200PI6PRO	2" Cast Pump w/6.5 hp B&S Engine
10	NIP200-SH	2" Short Nipple		200PI6LCT	2" Cast Pump w/6 hp LCT Engine
11	TF200VOR	2" Tank Fitting	17	W930108K	Valve Mount Assembly

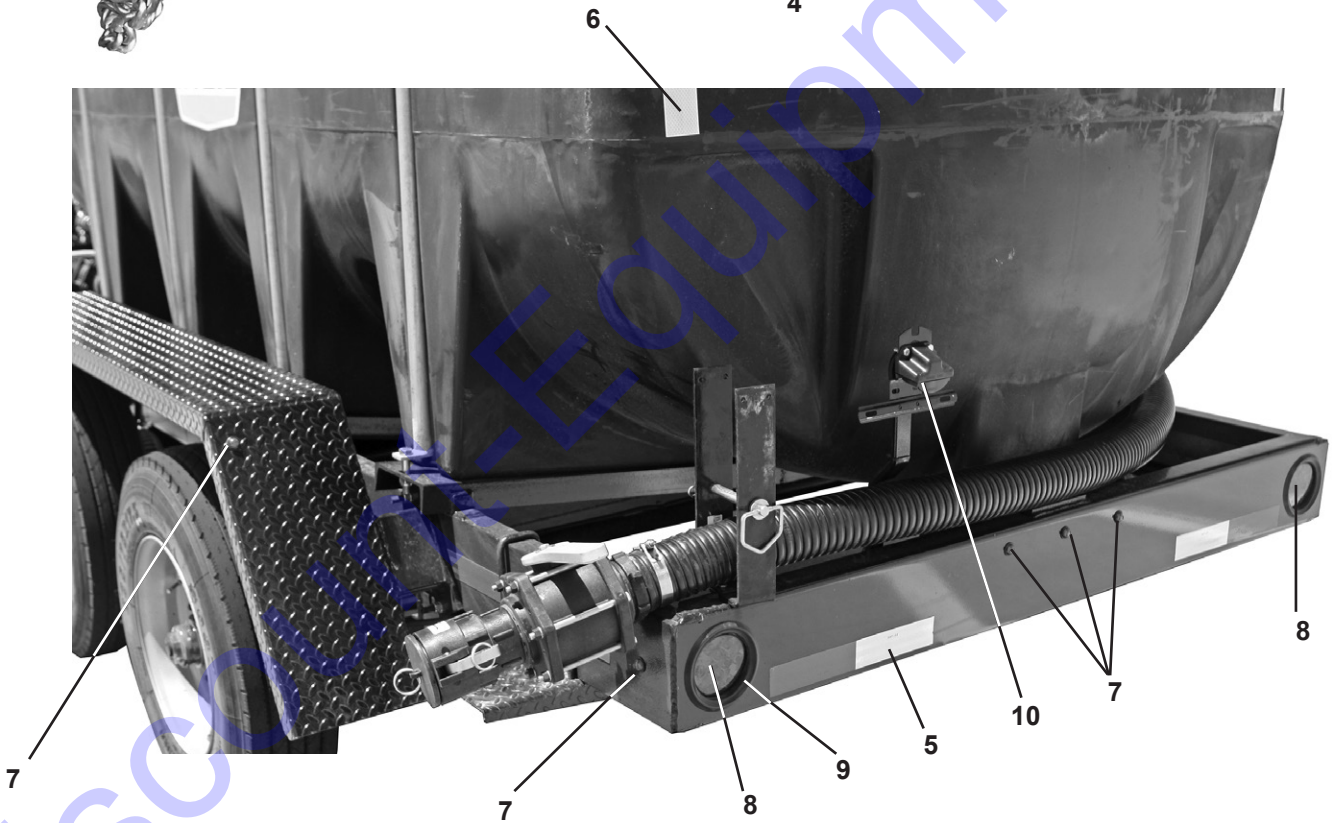
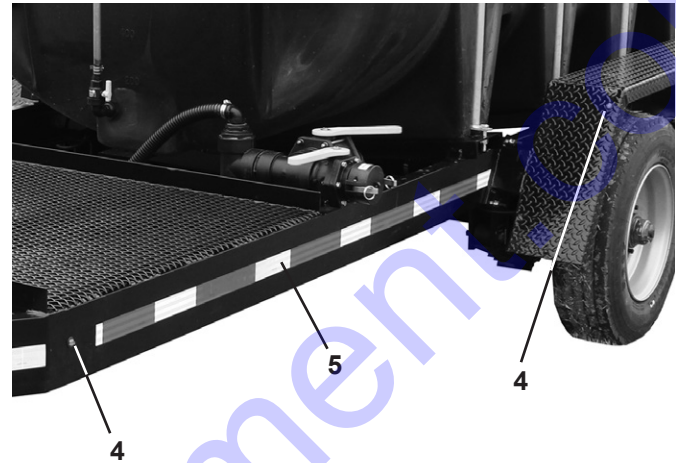
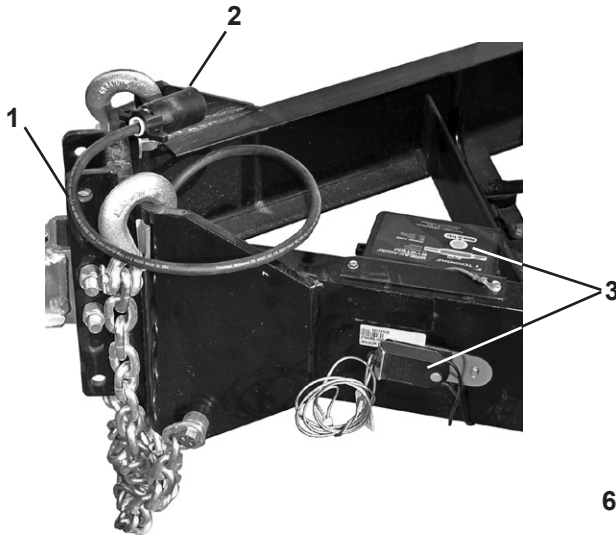
Typical Gooseneck Trailer Plumbing (with Quick Fill & Sparger option)



No.	Part No.	Description	No.	Part No.	Description
1	HB200	2" Hose Barb	11	200PH-5	2" Poly Pump w/5 hp Honda Engine
2	VA-200	2" Ball Valve, Angle		200P6PRO	2" Poly Pump w/6.5 hp B&S Engine
3	HS6054	2" 390SD Black Hose		200PIH-5	2" Cast Pump w/5 hp Honda Engine
4	1036	2" Hose Clamp		200PI6PRO	2" Cast Pump w/6.5 hp B&S Engine
6	TEE200	2" Tee	12	VSFMT-200	2" Stubby Valve
7	HB200-90	2" Hose Barb, 90°	13	200-CAP-PP	2" QC Cap
8	V-200	2" Ball Valve	14	SL200-45	2" Street EL, 45°
9	NIP200-SH	2" Short Nipple	15	12004001	2" Suction Hose
10	60405	2" Tank Fitting	16	PLUG200	2" Poly Pipe Plug



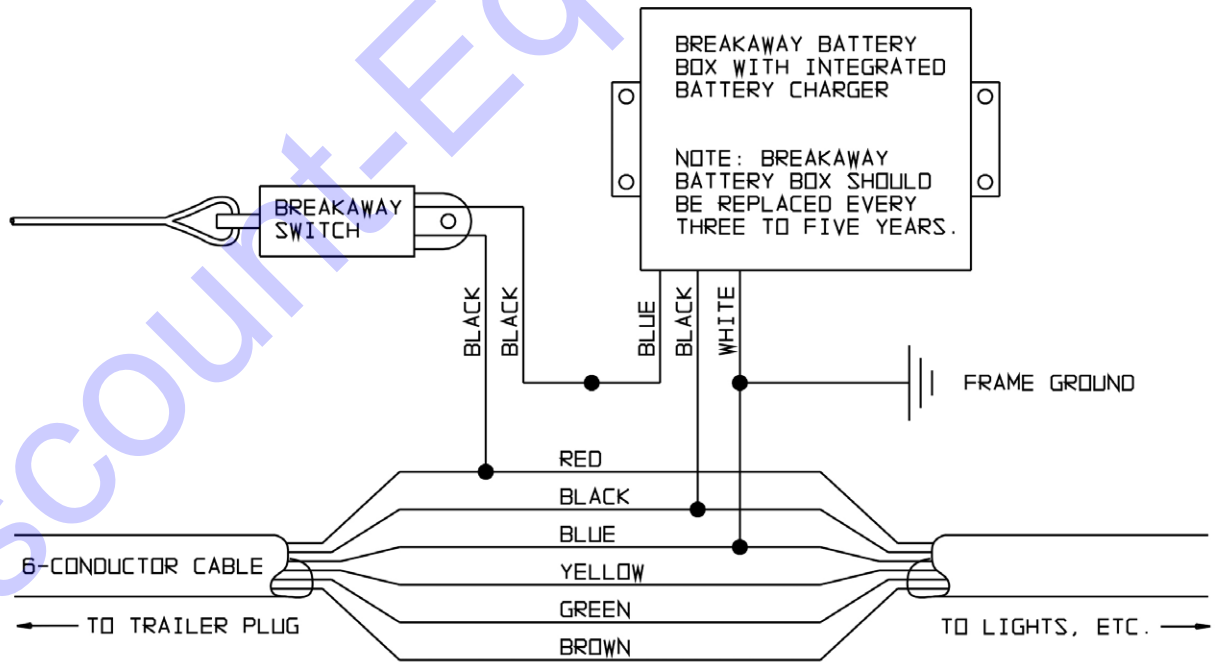
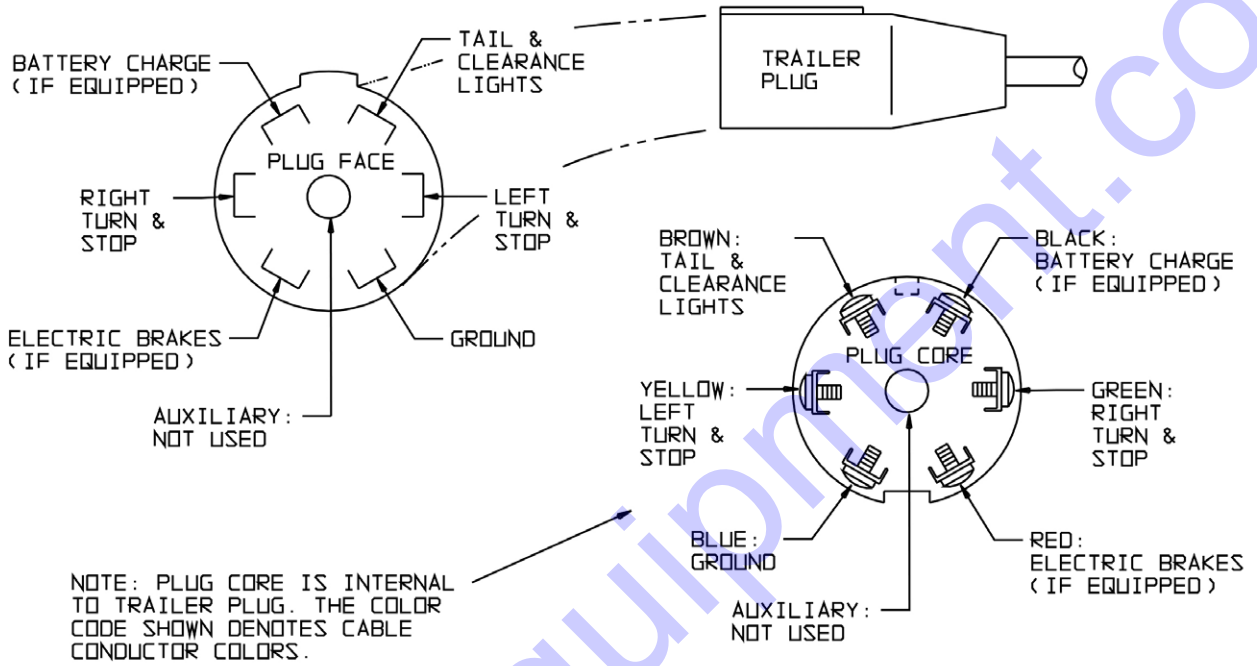
Lights & Breakaway Brake System



No.	Part No.	Description	No.	Part No.	Description
1	91465	14 Ga. 6 Conductor Wire	6	TMP-W200-12	White Reflective Tape 2" x 12"
2	5077003	7 Pole Trailer Connector	7	534BRK2B	¾" LED Red Clearance Light
3	50-85-315	Breakaway Kit	8	542BR	4" LED Stop Light
4	534BAK2B	¾" LED Amber Clearance Light	9	95227	4" Round Grommet
5	TMP-3M-980-02	Red & White Reflective Tape	10	223210	License Plate Light Assembly
				5310	Frame Clip, 3/8" ID (not shown)



WYLIE TRAILER WIRING SCHEMATIC OF PLUG & BREAKAWAY COMPONENTS

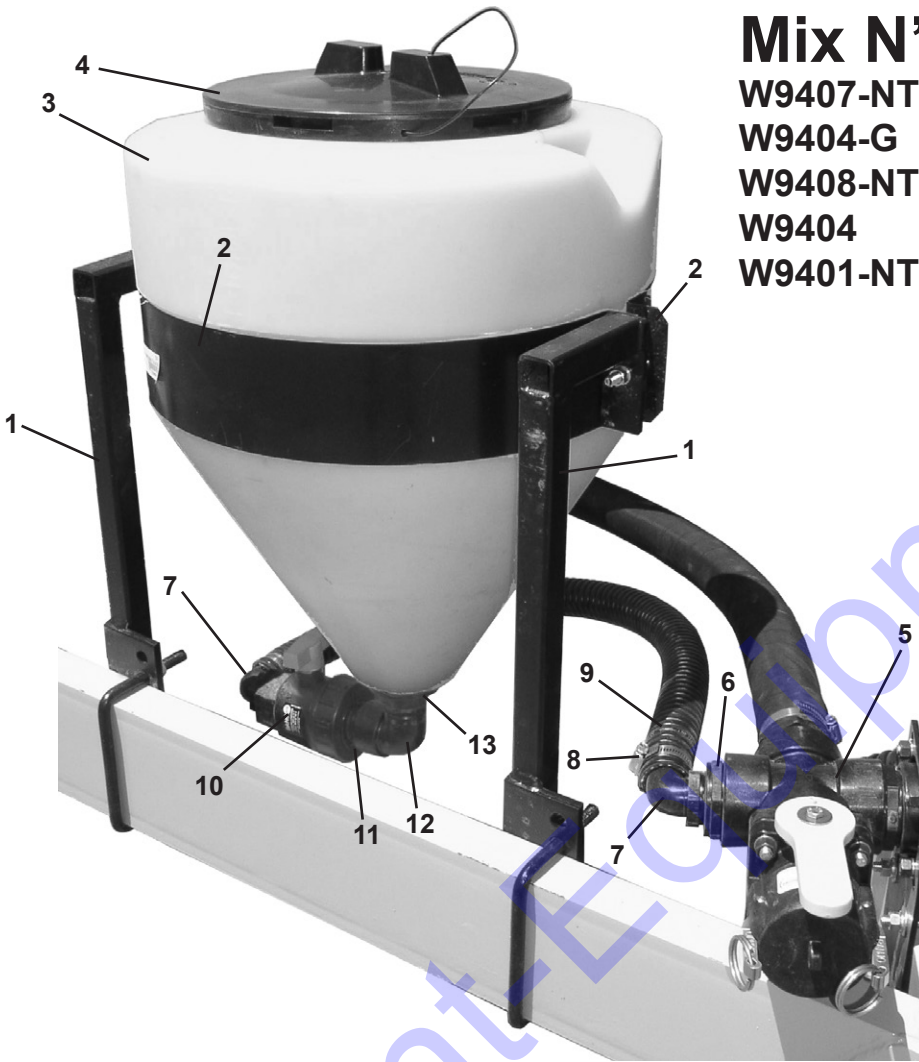




Mix N'Fill

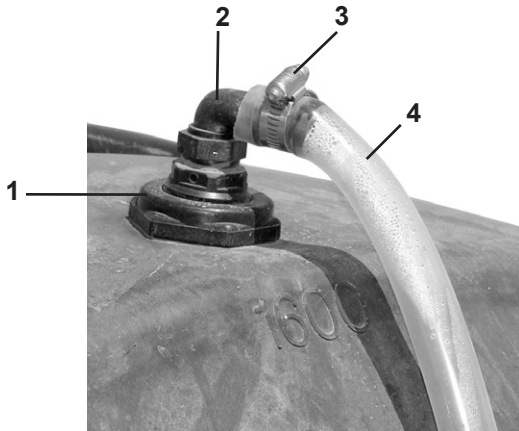
W9407-NT
W9404-G
W9408-NT
W9404
W9401-NT

E-Z Tow (shown)
Gooseneck (30 gal.)
Platform (15 gal.)
Tag (30 gal.)
Tag (15 gal.)

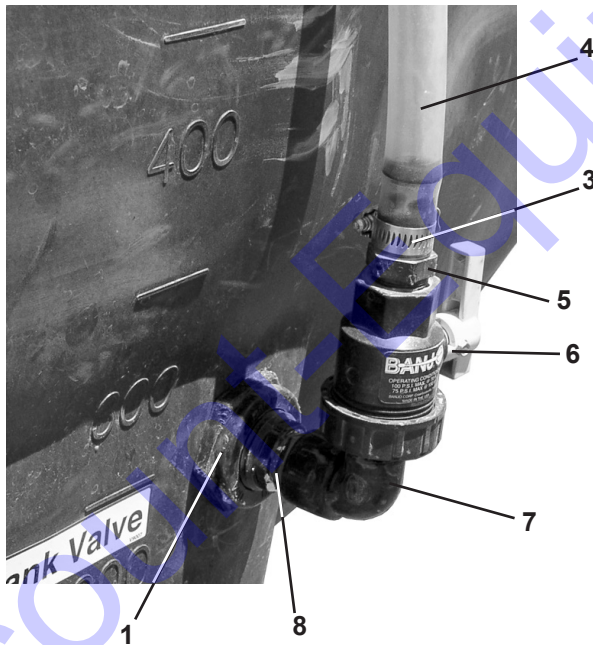


No.	Part No.	Description
1	W940701	Mix N'Fill Bracket (W9407-NT, W9408-NT)
	W940401	Mix N'Fill Bracket & Bands (W9404-G, W9404)
	W940107	Mix N'Fill Mount (W9401-NT)
	W940106	Mix N'Fill Bracket (W9401-NT) (not shown)
2	W940102	Mix N'Fill Bands, 15 Gal. (W9407-NT, W9408-NT, W9401-NT)
3	W15MNK	15 Gal. Cone Tank (W9407-NT, W9408-NT, W9401-NT)
	W30MNK	30 Gal. Cone Tank (W9404-G, W9404)
4	LID10	Tank Lid, 10"
5	CR200	2" Cross
6	RB200-125	2" x 1 1/4" Reducer Bushing
7	HB125-90	1 1/4" Hose Barb, 90°
8	1020	1 1/4" Hose Clamp
9	HS6052	1 1/4" Kanaflex Hose
10	UV-125FP	1 1/4" Ball Valve
11	NIP125-SH	1 1/4" Close Nipple
12	SL125-90	1 1/4" Street Elbow
13	TF125AV	1 1/4" Anti-Vortex Bulkhead Fitting

Sight Gauge Parts

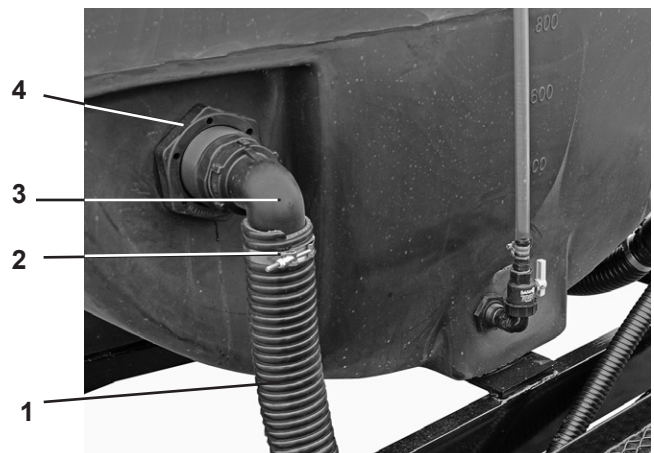


No.	Part No.	Description
1	TF075VOR	3/4" Tank Fitting
2	HB075-90	3/4" Hose Barb, 90°
3	1012	3/4" Hose Clamp
4	4-035-075	3/4" Clear Vinyl Tubing
5	HB-075	3/4" Hose Barb
6	UV-075FP	3/4" Single Union Valve
7	SL075-90	3/4" Street "L"
8	NIP075-SH	3/4" Short Nipple



No.	Part No.	Description
1	HS6054	2" Kanaflex Hose
2	TC231	2" Super Clamp
3	HB200-90	2" Hose Barb, 90°
4	60405	2" Bulkhead Fitting
	SL200-45	2" Street El, 45° (Not Shown)
	NIP200-6	2" x 6" Nipple (Not Shown)

Sparger Parts





7,000 lb Axle Parts

7,000 lb Axle Assemblies

TS70895730865EBC -- Axle Ass'y.

1600 Gooseneck

1600 Tag

1250 Gooseneck

1250 Tag Platform

1250 Tag

1000 Gooseneck

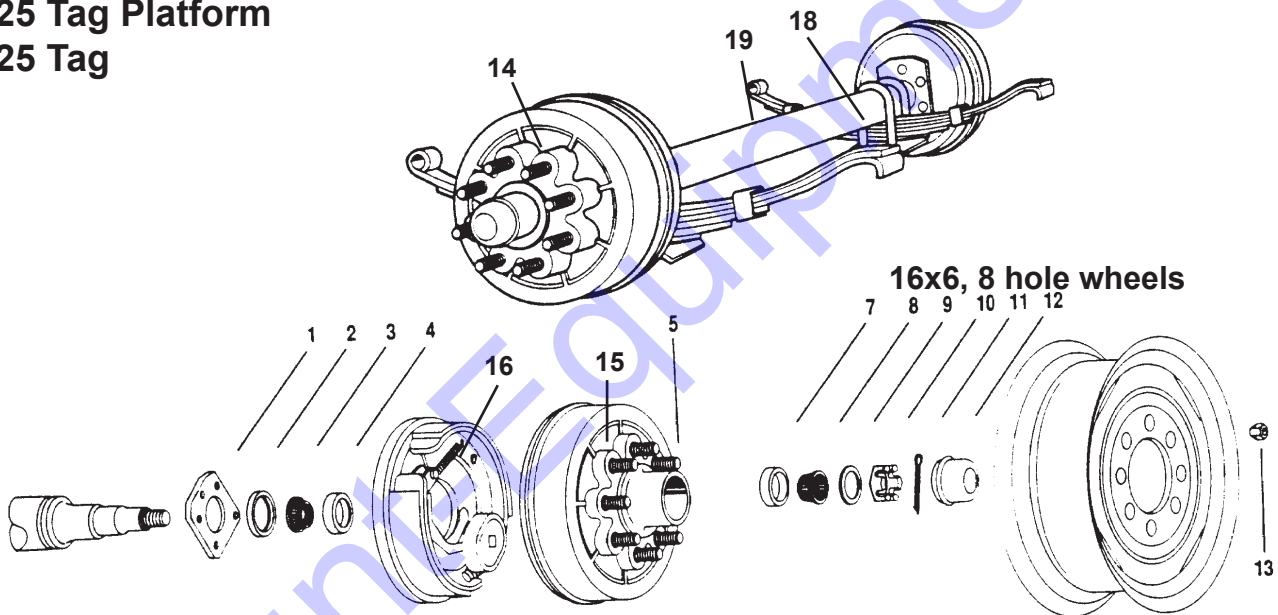
1000 Tag Platform

TS70705525865EBC -- Axle Ass'y.

1025 Gooseneck

1025 Tag Platform

1025 Tag

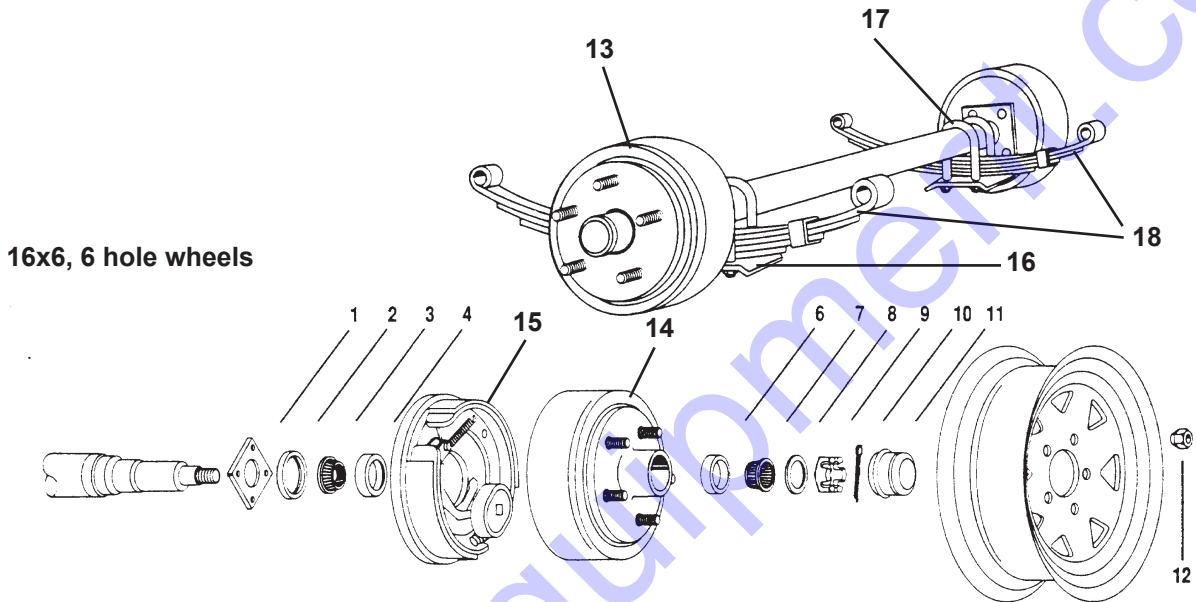


No.	Part No.	Description	No.	Part No.	Description
1	4-6T	Brake Flange	13	4756	Lug Nut
2	22333TBN	Grease Seal, double lip	14	92865A	Complete Brake Hub Ass'y.
3	25580	Inner Cone, 1.75 ID	15	92865A-1	Brake Hub, Bearings, Studs
4	25520	Inner Cup, 3.625" OD	16	4704-L	LH Electric Brake Ass'y, 12"x2 1/4"
5	4759-25-Z	Wheel Stud, 1/2" - 20x2.5"		4704-R	RH Electric Brake Ass'y, 12"x2 1/4"
7	14276	Outer Cup, 2.717" OD	17	4113-H	Triple Axle Slipper Spring Hanger Bracket (NS)
8	14125A	Outer Cone, 1.25" ID		4114-H	Tandem Axle Slipper Spring Hanger Bracket (NS)
9	4753	Spindle Washer, 1"	18	4201	3" U-Bolt Kit (1 per axle)
10	4754	Spindle Nut, 1" - 14	19	4361-40	Slipper Leaf Springs, 2", 4K, 6 Leaf, (1600, 1250)
11	4755	Cotter Pin, 1/8" x 2"		4351-30	Slipper Leaf Springs, 2", 4K, 6 Leaf (1025)
12	1605	Grease Cap		W120510	Equalizer Bar (Not Shown)



3,500 lb Axle Assemblies

TS35705525655EBX -- Axle Ass'y.
500 Tag
300 Tag



No.	Part No.	Description	No.	Part No.	Description
1	4-12	Brake Flange	12	4756	Lug Nut
2	171255TB	Grease Seal, double lip	13	94655	Complete Brake Hub Ass'y., 6 hole
3	L-68149	Inner Cone, 1.375 ID		94545	Complete Brake Hub Ass'y., 5 hole
4	L-68111	Inner Cup, 2.362" OD	14	94655-1	Brake Hub, Bearings, Studs, 6 hole
6	L-44610	Outer Cup, 1.98" OD		94545-1	Brake Hub, Bearings, Studs, 5 hole
7	L-44649	Outer Cone, 1.0625" ID	15	4701-L	LH Electric Brake Ass'y, 10"x2¼"
8	4753	Spindle Washer, 1"		4701-R	RH Electric Brake Ass'y, 10"x2¼"
9	4754	Spindle Nut, 1" -14	16	4102-A	Tandem Axle Spring Hanger Bracket
10	4755	Cotter Pin, 1/8" x 2"	17	4202	2 3/8" U-Bolt Kit (1 per axle)
11	21-3	Grease Cap	18	4342-17	Double Eye Springs, 1¾", 1.75K, 4 Leaf



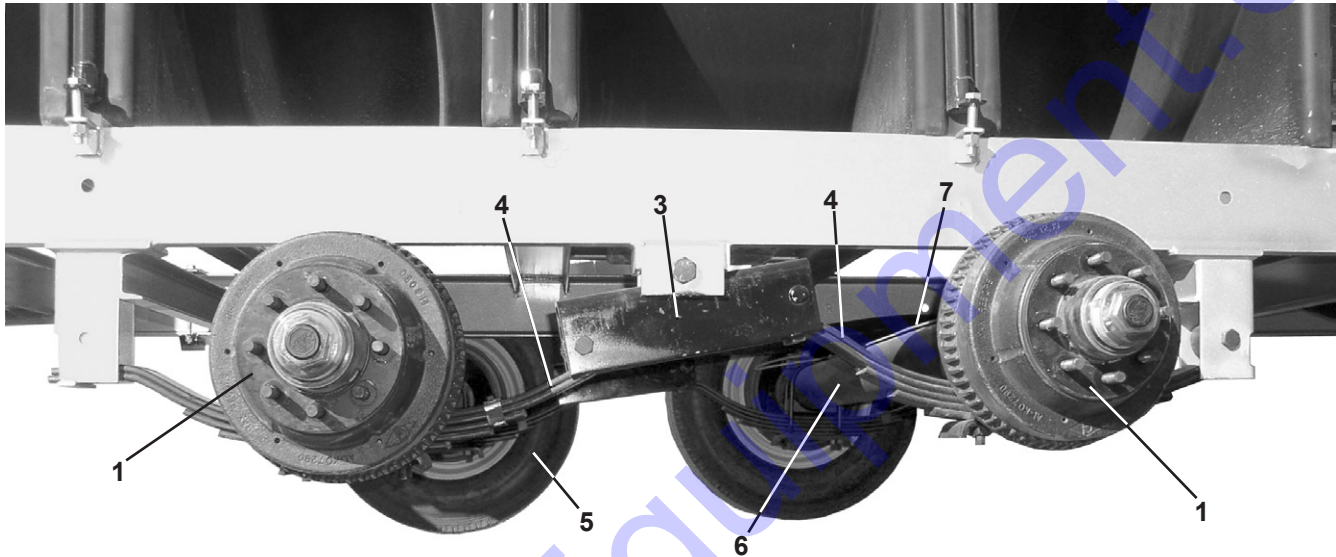
1600 Tandem Axle Ass'y.

10,000 lb Spring Wet Hub Axle Assemblies

1,600 Gooseneck (D201600G-P)

1,600 Platform (D201600T-P)

1,600 Tag (D201600T)



No.	Part No.	Description	No.	Part No.	Description
1	See Below	Hub & Brake Assemblies	4	43101-56	Slipper Spring
3	APT1025GD4275	Hanger Kit, Tandem, Tag	5	235/75R17.5	Tire/Wheel Combo 6000#, 235x75R17.5
	APT1025GD4850	Hanger Kit, Tandem, GN	6	10K915660865EBSX-Q	10K Axle, Electric Brake
	5000GD	Equalizer Bar		10K915660865HBSX	10K Axle, Surge Brake
	2000	Hanger, Center	7	4781	Hydraulic Line Kit (surge brakes)

No.	Part No.	Description	No.	Part No.	Description
1	99865-OBE	Complete Hub & Drum	1g	4798	Spindle Washer
1a	568213	Hydraulic Brake Assembly	1h	4797	Spindle Nut
1a	2/RCMHS-11-10Q	10K Hydraulic Disc, 4.88" Pilot	1i	CP-3	Cotter Pin
1b	4738-R	RH Electric Brake Assembly	1j	CR27438	Oil Seal
1b	4738-L	LH Electric Brake Assembly	1k	568216	Nut
1b	99865-1PA	Drum, 4.88" Pilot w/armature plate	1l	12011-1	Oil Cap Assembly
1c	28521	Inner Cup (race)	1m	12011	Oil Cap
1d	28580	Inner Cone (bearing)	1n	V75340	O-Ring
1e	25520	Outer Cup (race)	1p	RP-200	Oil Cap Plug
1f	25580	Outer Cone (bearing)			

D036000T
D036000T-HD

6,000 Gal. Double Cone DOT Trailer
6,000 Gal. Double Cone DOT Trailer

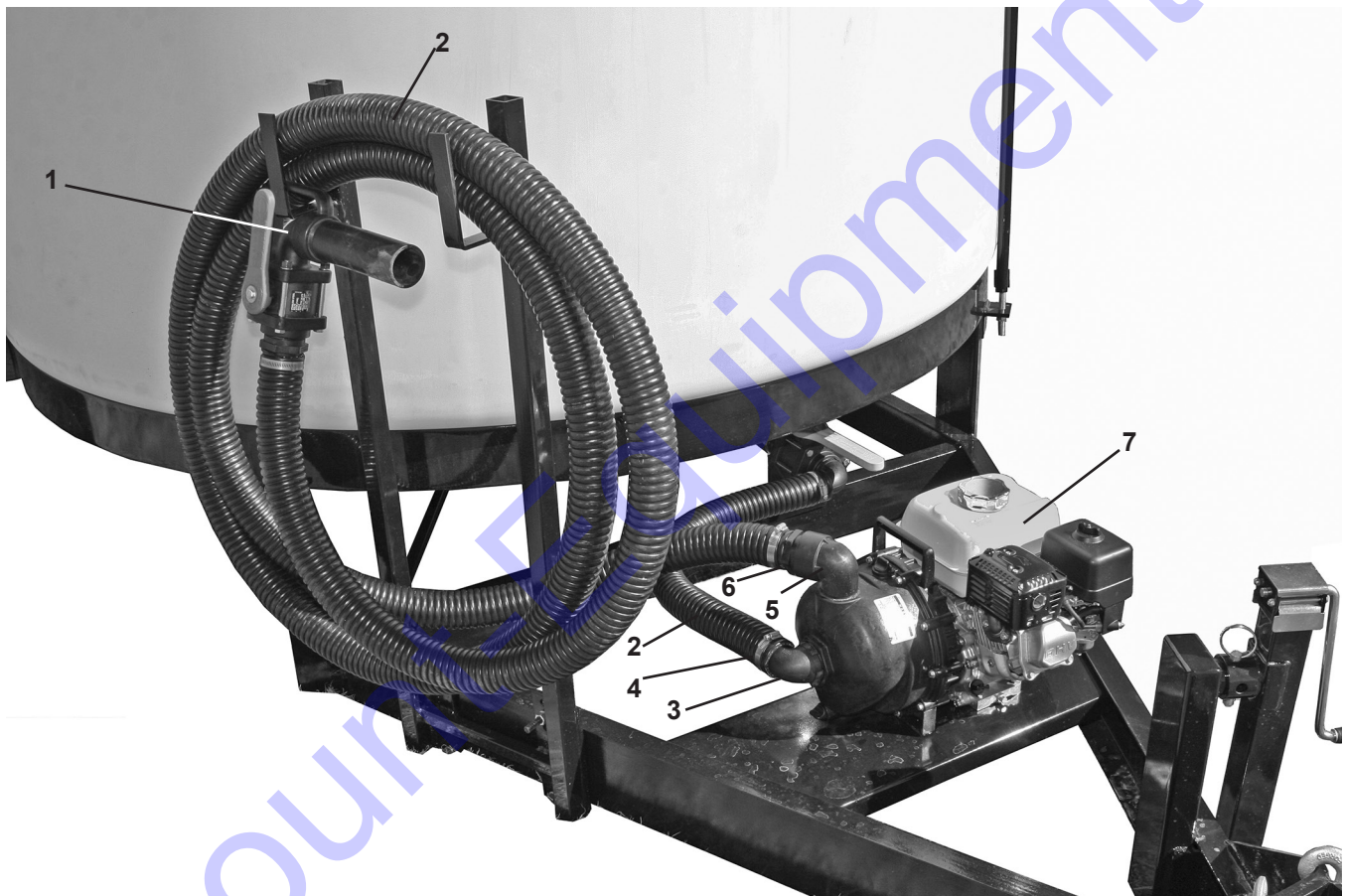


No.	Part No.	Description	No.	Part No.	Description
1	09430-95	2" Coupler	9	423012	Trailer Light Bracket
	W-028657	2 5/16" Coupler, HD	10	W221217	LH Fender
2	SC43-39	Safety Chain		W221218	RH Fender
3	HD500-SWL-TMR-PZ-M	5000# Sidewind Jack	11	V0382	Mud Flap
4	50-85-315	Breakaway Kit	12	660865831314114	7.50X16LT Wheel & Tire
5	T3000CNK	3,000 Gal. Cone Tank		660865831314115	ST235/80R16E Wheel & Tire, HD
6	VC-230	2" Vent Cap	13	W221213	Trailer Frame
7	W221221	Tie Down		W221220	Trailer Frame, HD
8	352060	18" Tank Lid Assembly			



Double Cone Pump Kits

81544CBP	2" Banjo Poly Pump/6.5 HP Briggs & Stratton
81544HCBP	2" Banjo Poly Pump/5 HP Honda
81547CBECP	2" Banjo Poly Pump/6.5 HP LCT
81544CBCI	2" Banjo Cast Iron Pump/6.5 HP Briggs & Stratton
81544HCBPCI	2" Banjo Cast Iron Pump/5 HP Honda
81547CBECCI	2" Banjo Cast Iron Pump/6.5 HP LCT



No.	Part No.	Description	No.	Part No.	Description
1	VA-200	2" Nozzle Valve	7	200P6PRO	2" Poly Pump, 6.5 HP B&S
2	HS6054	2" Kanaflex Hose		200PH-5	2" Poly Pump, 5 HP Honda
3	HB200-90	2" Hose Barb, 90°		200P6LCT	2" Poly Pump, 6.5 HP LCT
4	1036	2" Hose Clamp		200PI6PRO	2" Cast Iron Pump, 6.5 HP B&S
5	SL200-90	2" Street L, 90°		200PIH-5	2" Cast Iron Pump, 5 HP Honda
6	HB-200	2" Hose Barb		200PI6LCT	2" Cast Iron Pump, 6.5 HP LCT

W2212-PLUMB

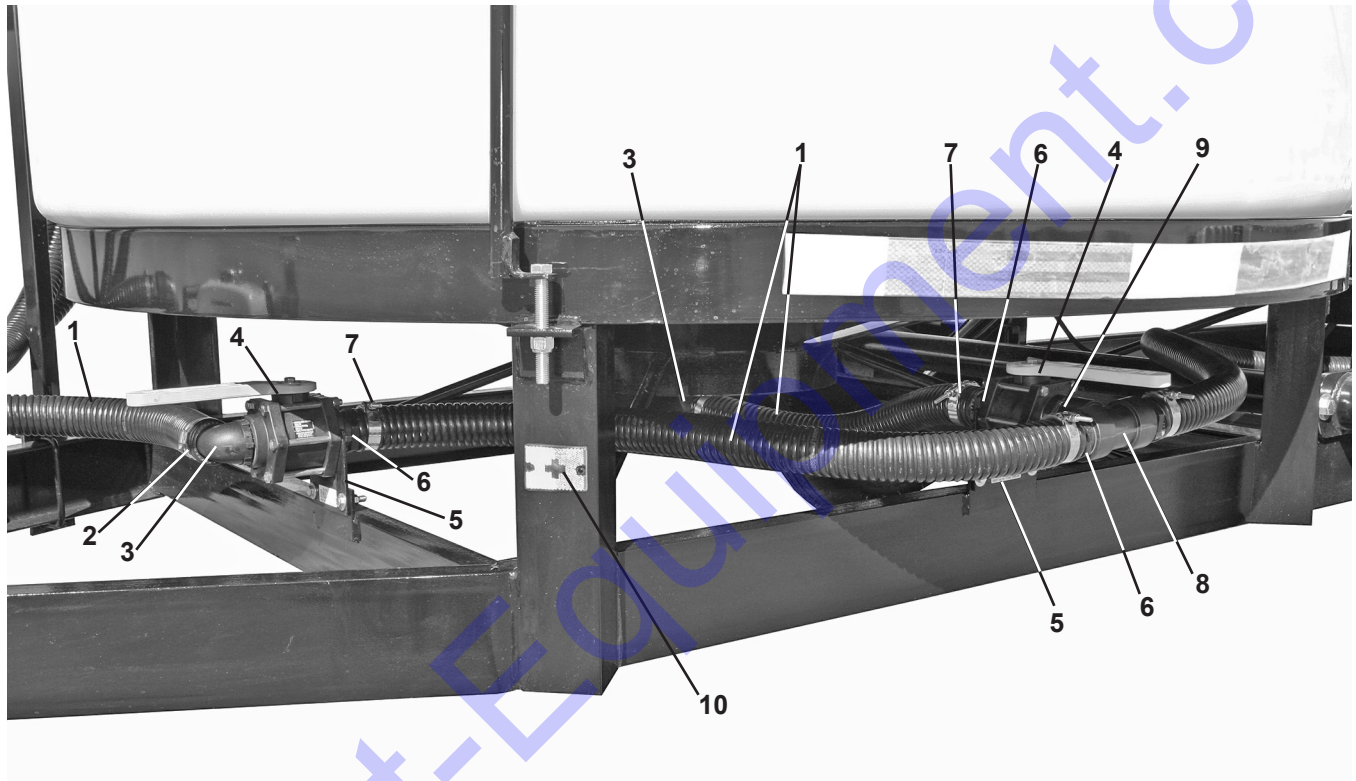
2" Plumbing Kit

W2212-PLUMB3A

3" Plumbing Kit - Threaded

W2212-PLUMB3M

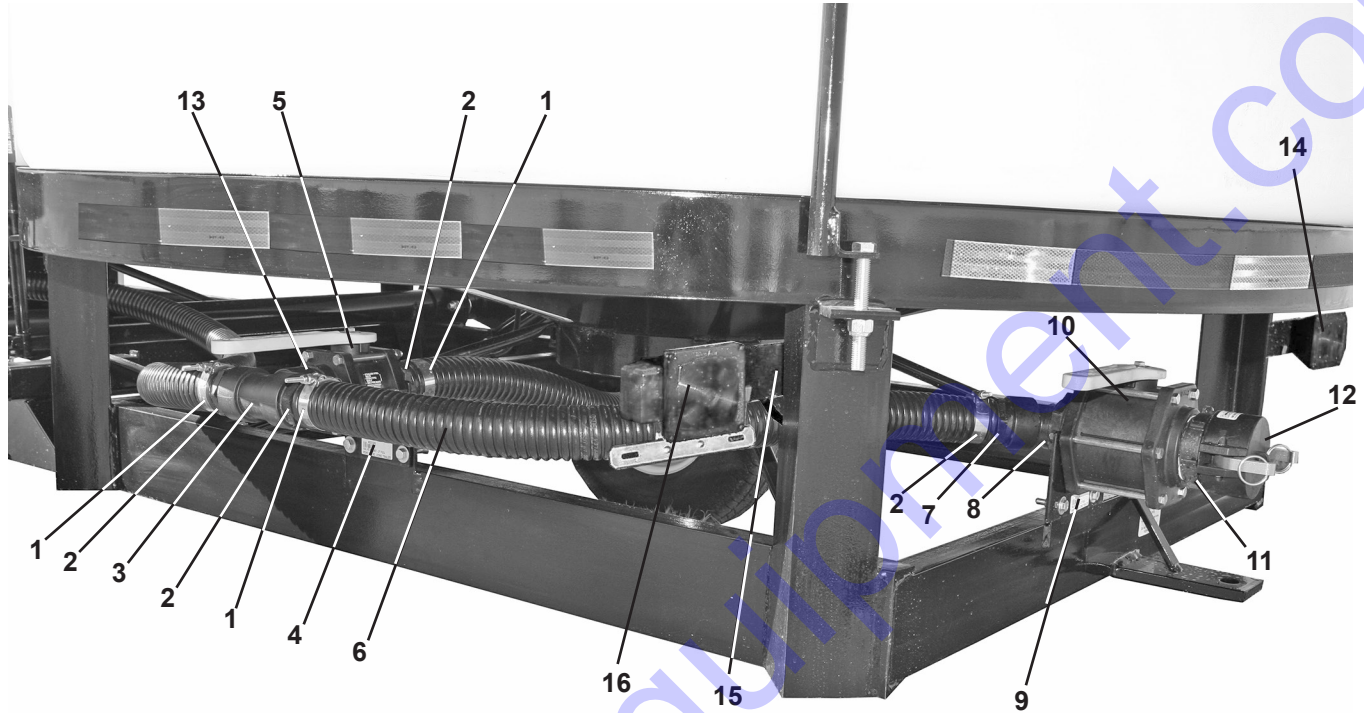
3" Plumbing Kit - Flanged



No.	Part No.	Description	No.	Part No.	Description
1	HS6054	2" Kanaflex Hose	6	HB-200	2" Hose Barb x 2" MPT (2" Thread)
	HS2194	3" Kanaflex Hose		HB-300	3" Hose Barb x 3" MPT (3" Thread)
2	1036	2" Hose Clamp		M300BRB	3" Hose Barb x 3" Flange (3" Flange)
	1056	3" Hose Clamp	7	TC-231	2" Hose Clamp
3	HB200-90	2" Hose Barb, 90°		TC-331	3" Hose Clamp
	HB-300-90	3" Hose Barb, 90°	8	TEE200	2" Tee (2" Thread)
4	V-200FP	2" FP Valve (2" Thread)		TEE300	3" Tee (3" Thread)
	V-300FP	3" FP Valve (3" Thread)		M300TEE	3" Tee (3" Flange)
	MV300CF	3" FP Valve (3" Flange)	9	NIP-200-SH	2" Nipple, Short (2" Thread)
5	W221203	2" FP Valve Mount		NIP-300-SH	2" Nipple, Short (3" Thread)
	W221204	3" FP Valve Mount		FC300	3" Manifold Clamp (3" Flange)
				300-G	3" Manifold Gasket, EPDM (3" Flange)
			10	223117	Amber Side Marker Light

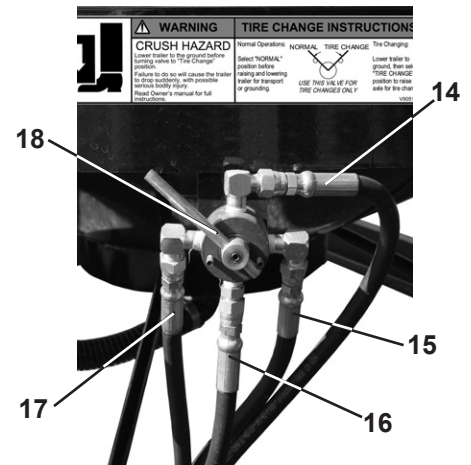
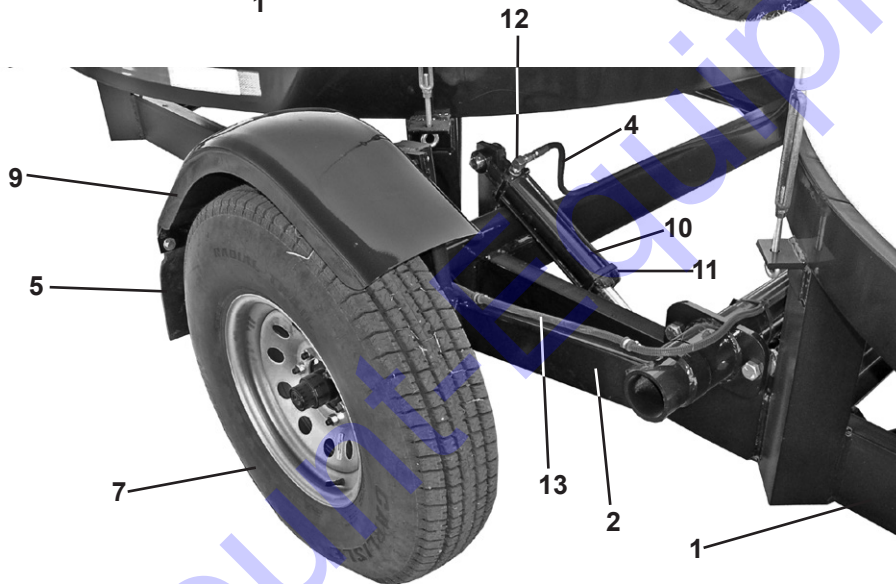
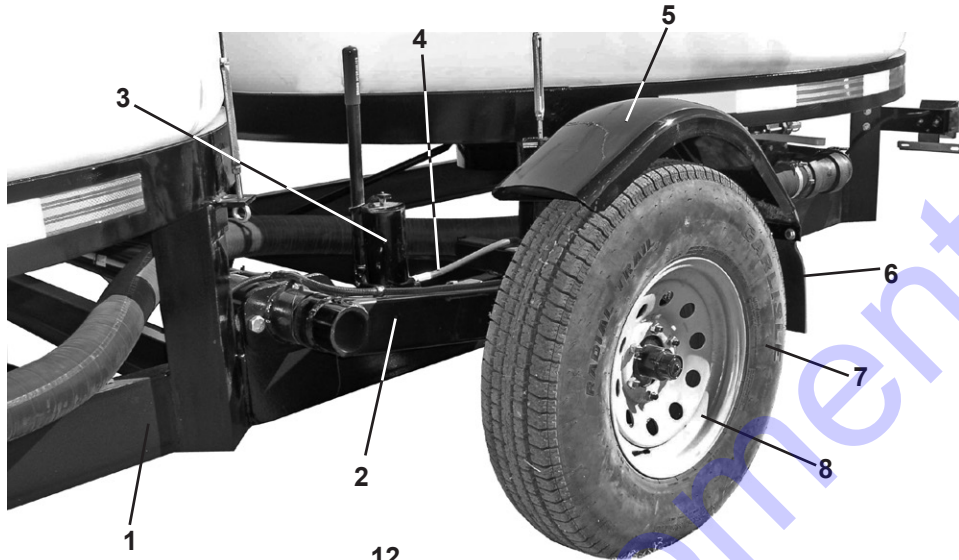


Plumbing Kits, Cont'd.



No.	Part No.	Description	No.	Part No.	Description
1	TC-231	2" Hose Clamp	7	SL200-45	2" Street L, 45° (2" Thread)
	TC-331	3" Hose Clamp		SL300-45	3" Street L, 45° (3" Thread)
2	HB-200	2" Hose Barb x 2" MPT (2" Thread)		M300CPG45	3" Flange Coupling, 45° (3" Flange)
	HB-300	3" Hose Barb x 3" MPT (3" Thread)	8	RB300-200	3" x 2" Reducer Bushing (2")
	M300BRB	3" Hose Barb x 3" Flange (3" Flange)	9	W221204	3" FP Valve Mount
3	TEE200	2" Tee (2" Thread)	10	V-300FP	3" FP Valve (2", 3" Thread)
	TEE300	3" Tee (3" Thread)		MV300CF	3" FP Valve (3" Flange)
	M300TEE	3" Tee (3" Flange)	11	300-F-PP	3" Male Adapter (2", 3" Thread)
4	W221203	2" FP Valve Mount		M300A	3" Male Adapter (3" Flange)
	W221204	3" FP Valve Mount	12	300-CAP-PP	3" QC Cap
5	V-200FP	2" FP Valve (2" Thread)	13	NIP200-SH	2" Short Nipple
	V-300FP	3" FP Valve (3" Thread)		NIP300-SH	3" Short Nipple
	MV300CF	3" FP Valve (3" Flange)	14	423062	RH Combo Light
6	HS6054	2" Kanaflex Hose	15	W221504	Light Bracket
	HS2194	3" Kanaflex Hose	16	423012	LH Combo Light
				HB200-90	2" Hose Barb x 2" MPT, 90° (NS)
				HB300-90	3" Hose Barb x 3" MPT, 90° (NS)

D036000T Double Cone DOT Trailer

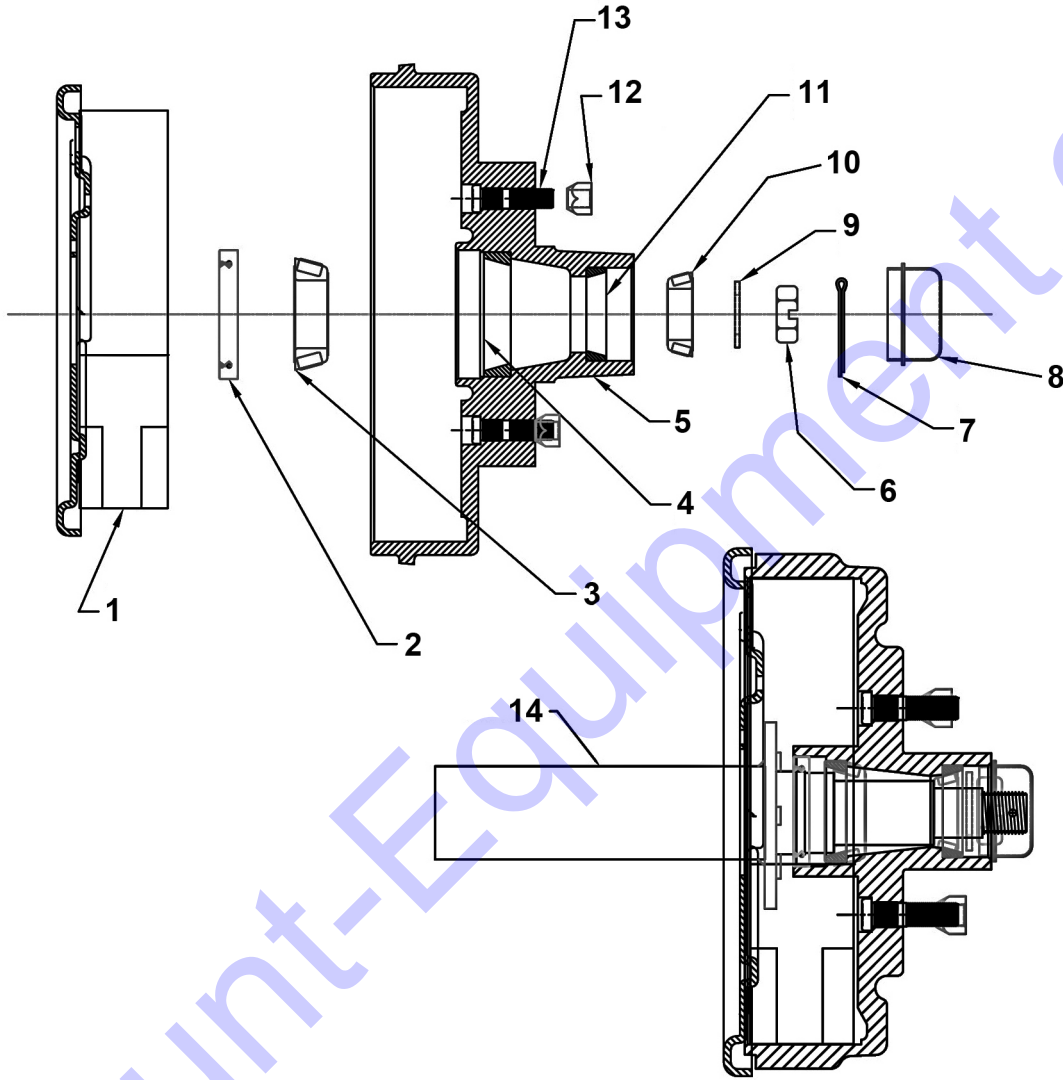


equipped on HD model

No.	Part No.	Description	No.	Part No.	Description
1	W221213	Trailer Frame	9	W221218	RH Fender
	W221220	Trailer Frame, HD	10	645054	2"x8" Tie Rod Cylinder
2	W221219	Axle	11	110559	8 Male Boss Breather, 10 Micron
3	W221215	Hydraulic Hand Pump	12	8MB-6MJ90	8 Male O-Ring Boss x 6MJIC 90
	W221205	Hydraulic Hand Pump, HD	13	91465	14 Ga. 6 Conductor Wire
4	HYD118	1/4" Hyd. Hose, 6FJICS, 118"	14	HYD171	1/4" 6FJICS Hyd. Hose, 86"
5	W221217	LH Fender	15	HYD120	1/4" 6FJICS Hyd. Hose, 54"
6	V0382	Mud Flap	16	HYD118	1/4" 6FJICS Hyd. Hose, 72"
7	660865831314114	7.50X16LT Wheel & Tire	17	HYD126	1/4" 6FJICS Hyd. Hose, 40"
	660865831314115	ST235/80R16E Wheel & Tire, HD	18	HPV4	Manual Rotary Hydraulic Valve

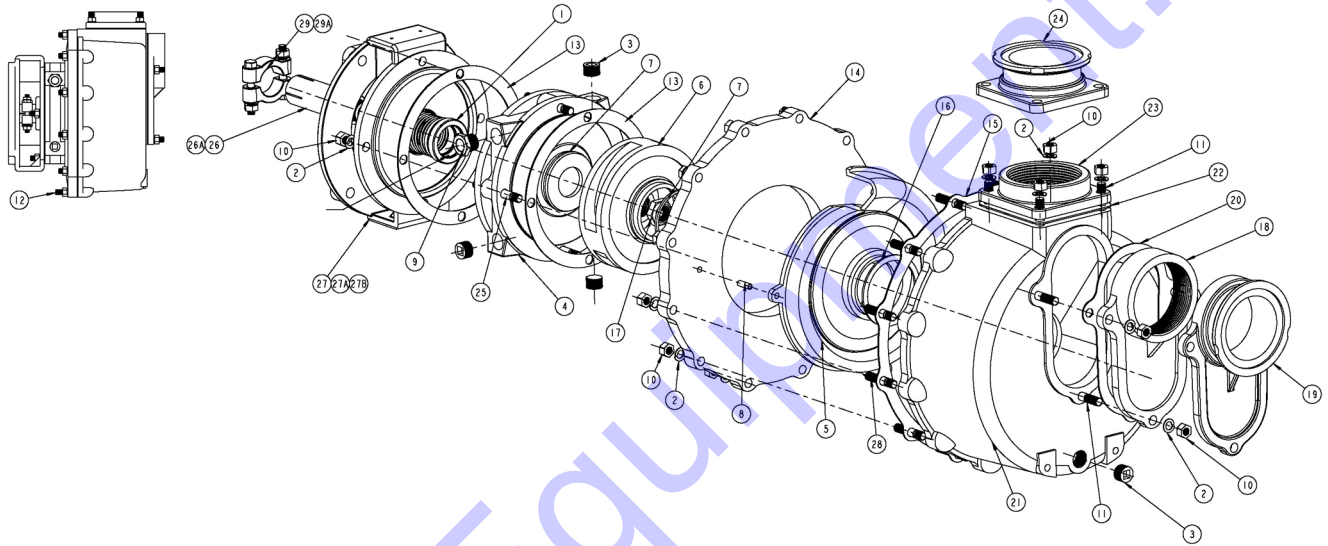


Double Cone DOT Trailer Hub Assembly



No.	Part No.	Description	No.	Part No.	Description
1	4701L	Brake Assembly (Left Side)	8	21-3-AL-100	Dust Cap
	4701R	Brake Assembly (Right Side)	9	4753	Washer
2	171255TB	Grease Seal	10	L-44649	Outer Bearing
3	L-68149	Inner Bearing	11	L-44610	Outer Race
4	L-68111	Inner Race	12	4756	Lug Nut
5	94655-1	Hub/Drum	13	4759-Z	Stud
6	4754	Castleated Nut	14	R30884FM-PL	Spindle
7	4755	Cotter Pin			

CDS/John Blue Centrifugal Pump SP-3320, SP-3320-BS



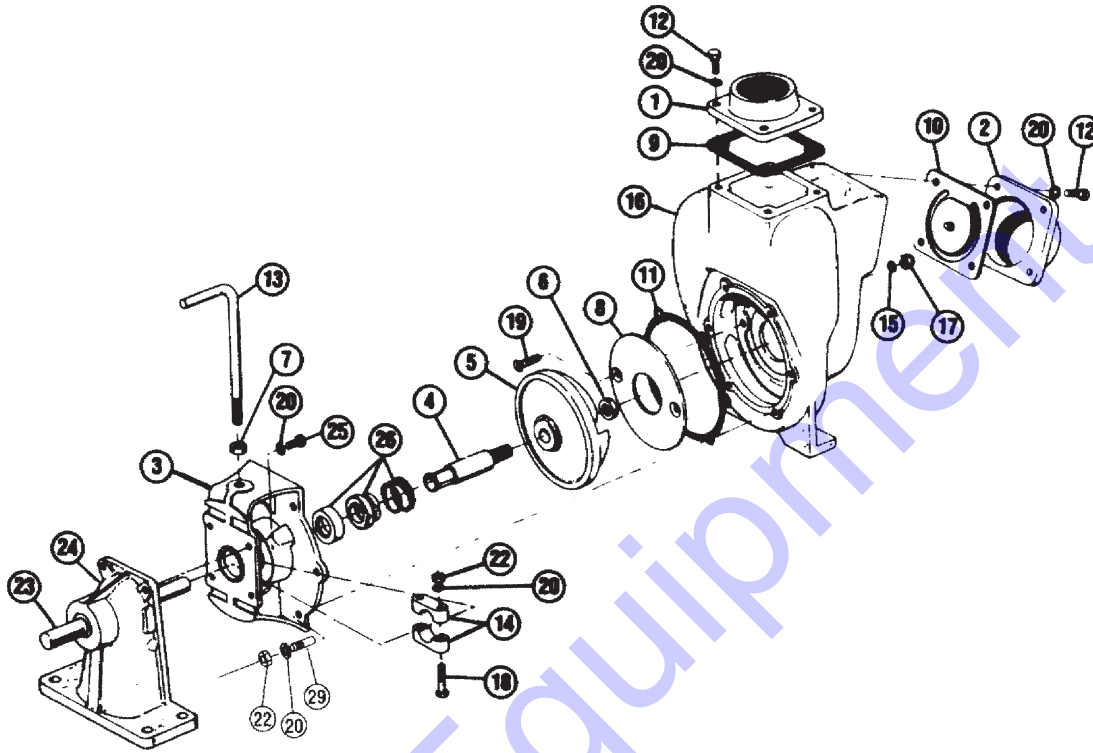
Ref.	Req.	Part No.	Description
1	1	43005	mech. double seal
2	23	93025	3/8" lockwasher
3	4	95019	1/2" NPT Plug
4	1	102035-01	reservoir
5	1	102036-01	scroll plate
6	1	102037-01	impeller
7	2	110152-01	annular seal
8	2	L-4135	1/4" x 3/4" roll pin, SS
9	1	S-3555	view window
10	23	S-3557	3/8" nut, SS
11	7	S-3561-P	3/8" x 1 5/8" stud, SS
12	2	S-3597-P	3/8" x 2" stud, SS
13	2	S-3638	gasket seal
14	1	S-3640	housing cover
15	1	S-3641	housing cover gasket
16	1	S-3648	gasket, scroll plate
17	1	S-3649	3/4" - 16 left hand locknut

Ref.	Req.	Part No.	Description
18	1	S-3652	3" FPT suction flange
19	1	S-3652-FLG	suction flange
20	1	S-3654	suction flange gasket
21	1	S-3655	housing
22	1	S-3656	flange gasket
23	1	S-3657	3" FPT flange
24	1	S-3657-FLG	flanged adapter
25	4	S-3664-P	3/8" x 3 3/4" stud, SS
26	1	S-3646	impeller shaft
		114524-01	impeller shaft, "BS" gas engine
27	1	102189-01	adapter for gas engine
		102190-01	adapter for electric motor
		114523-01	adapter for "BS" gas engine
		114524-01	impeller shaft for "BS" gas engine
28	10	S-3666-P	3/8" x 1 7/8" stud, SS
29	1	S-3608	3" SS clamp assembly



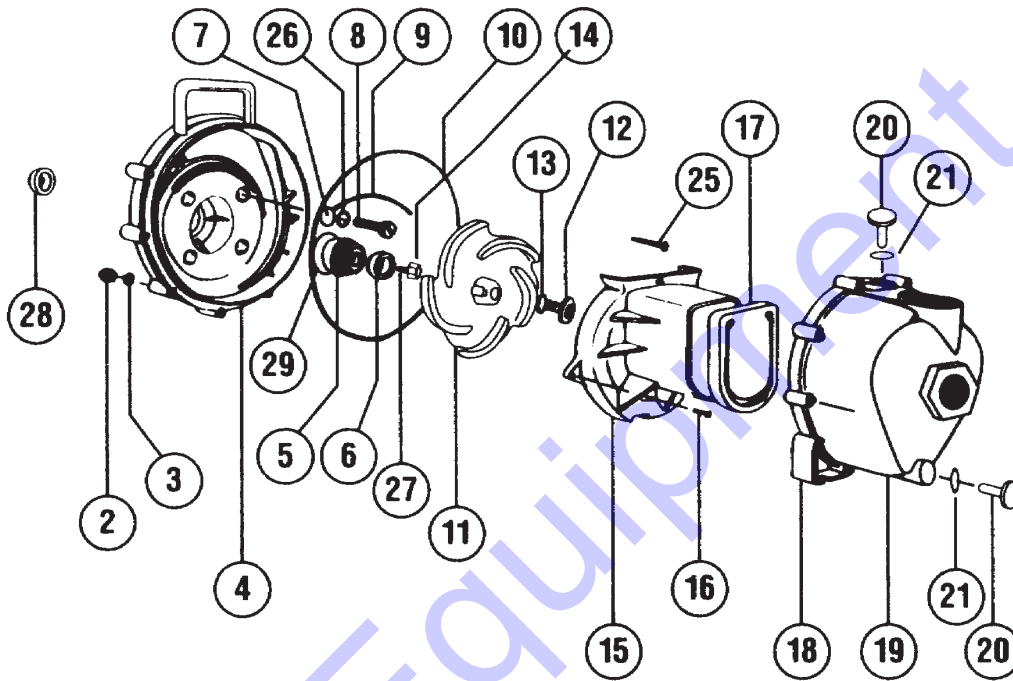
Pump

Banjo Case Iron Transfer Pump 200PI-5



Ref.	Part No.	Description
1	17000	flange-outlet 2"
1	17001	flange-outlet 1½"
2	17002	flange-inlet 20°2"
2	17003	flange -inlet 20°1½"
3	17004	adapter-gas engine
4*	17006	sleeve drive ¾"
5*	17008	impeller
6	17009	nut, hex 5/8"-18 UNF
7	17010	nut, hex ½"-13 UNC
8*	17011	wear plate
9	17013	EPDM gasket
10	17016	gasket-checkvalve assy.
11*	17018	gasket adapter
12	17019	capscrew 5/16"-18 x ¾"
13	17022	handle
14	17023	clamp 5/8", ¾" shaft assy
15*	17025	wear plate gasket
16	17026	pump housing
17	17027	ss acorn nut 5/16" x 18-1 ¾"
18	17029	cap screw 5/16" x 18-1 ¼"
19*	17130	flat head 82° c screw
20	V-10118	5/16" lockwasher
22	V-10119	5/16"-18 unc ss hexnut
23	26085	shaft assy for pedestal
24	12882A	pedestal assy w/¾"shaft
25	17040BJ	cap screw 5/16"-24 nf
26*	17035	seal assy (viton)
29	17042	stud
N/S	17100	*pump repair kit (1½" & 2") includes * items

Banjo Poly Transfer Pump 200P-5



Ref	Part No.	Description	Per Pump
2	V-07019	body nuts, ss	10
3	V-07018	lock washer, ss	10
4	12703A	poly pump, rear bracket	1
5 & 6	12713	seal assembly	1
7	12717	screw heads, O-ring	4
8	12715A	bracket screw, ss	4
9	12754	O-ring segment	1
10	12719A	body O-ring	1
11	12771A	3/5 vane poly pump impeller, 1½"	1
11	12772	3/5 vane poly pump impeller, 2"	1
12	12765A	impeller bit, ss	1
13	12774VA	impeller bit gasket	1
14	12775A	impeller hex nut	1

Ref	Part No.	Description	Per Pump
15	12702A	poly pump volute	1
16	12725	volute screws, ss	1
17	12705	poly pump check valve	2
18	12711A	poly pump body assembly, 1½"	1
18	12712A	poly pump body assembly, 2"	1
19	12720	body screws, ss	1
20	12777	prime/drain plug	10
21	UV15163	prime/drain plug O-ring	1
25	12900	upper volute screw, ss	1
26	12901	rear bracket washer, ss	1
27	12902A	impeller key	1
28	12706	poly pump slinger	1
29	12999A	O-ring for seal assembly	1
	12000A	Pump repair kit	

Discount Equipment

Discount-Equipment.com is your online resource for commercial and industrial quality parts and equipment sales.

Locations:

Florida (West Palm Beach): [561-964-4949](tel:561-964-4949)

Outside Florida TOLL FREE: [877-690-3101](tel:877-690-3101)

Need parts? Check out our website at www.discount-equipment.com

Can't find what you need?

Click on this link: <http://www.discount-equipment.com/category/5443-parts/> and fill out the request form.

Please have the machine model and serial number available in order to help us get you the correct parts. One of our experienced staff members will get back to you with a quote for the right part that your machine needs.

We sell worldwide for the brands: Genie, Terex, JLG, MultiQuip, Mayco, Toro/Stone, Diamond Products, Magnum, Airman, Mustang, Power Blanket, Nifty Lift, Atlas Copco, Chicago Pneumatic, Allmand Brothers, Essick, Miller Spreader, Skyjack, Lull, Skytrak, Tsurumi, Husquvarna/Target, Whiteman-Concrete/Mortar, Stow-Concrete/Mortar, Baldor, Wacker, Sakai, Snorkel, Upright, Mi-T-M, Sullair, Neal, Basic, Dynapac, MBW, Weber, Bartell, Bennar Newman, Haulotte, Ditch Runner, Blaw-Knox, Himoina, Best, Buddy, Crown, Edco, Wyco, Bomag, Laymor, Terremite, Barreto, EZ Trench, Takeuchi, Basic, Bil-Jax, Curtis, Gehl, Heli, Honda, ICS/PowerGrit, Puckett, Waldon, ASV, IHI, Partner, Imer, Clipper, MMD, Koshin, Rice, Gorman Rupp, CH&E, Cat Pumps, Comet, General Pump, Giant, AMida, Coleman, NAC, Gradall, Square Shooter, Kent, Stanley, Tamco, Toku, Hatz, Kohler, Robin, Wisconsin, Northrock, Oztec, Toker TK, Rol-Air, Small Line, Wanco, Yanmar

New Equipment - Used Equipment - Rental Equipment - Parts and Accessories

Discount Equipment

www.discount-equipment.com

561-964-4949

Parts: wbparts@Discount-Equipment.com

Sales: info@Discount-Equipment.com



www.discount-equipment.com

2018 – Wylie Manufacturing Company
Specifications Subject To Change Without Notice