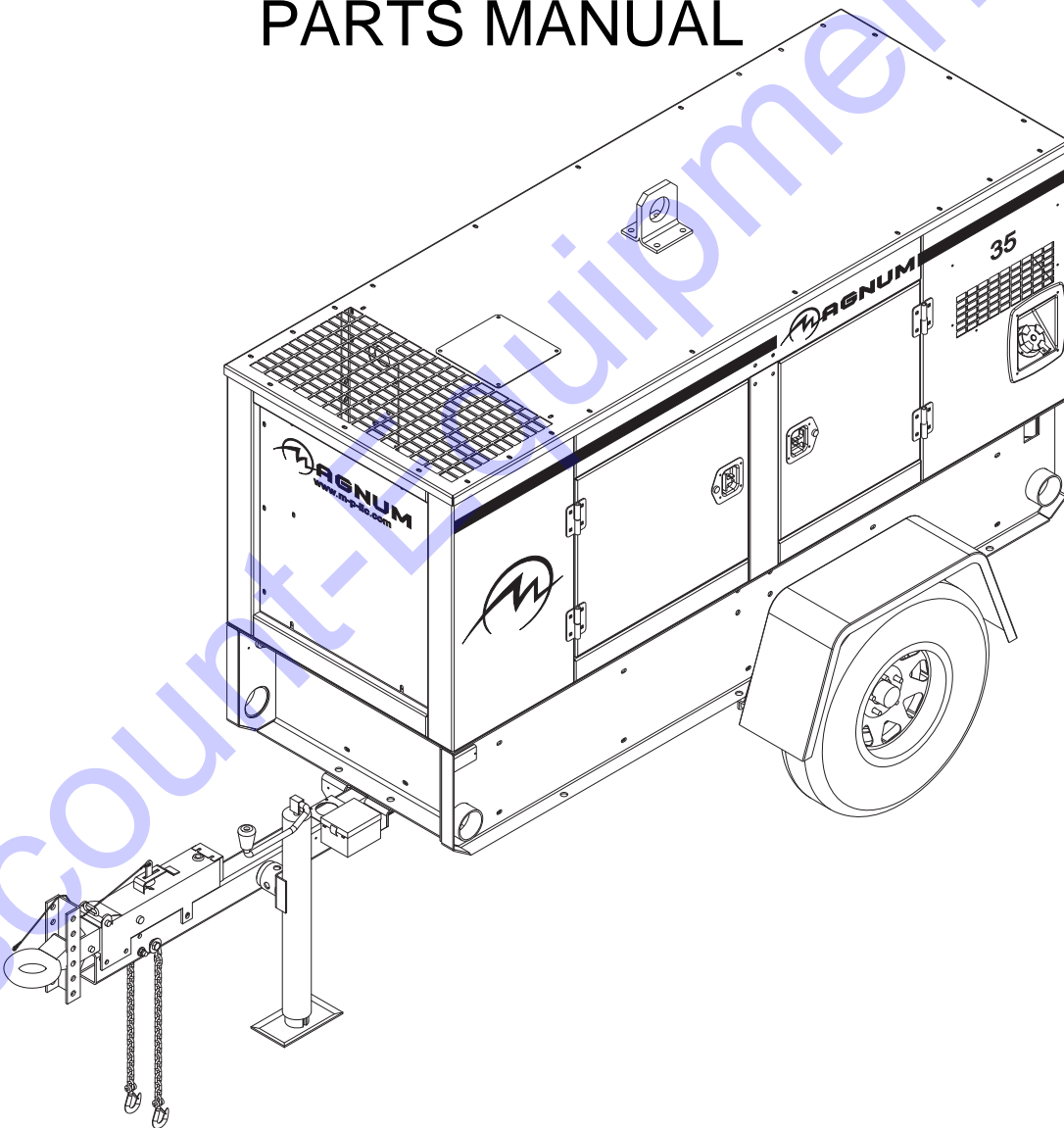




DIESEL GENERATOR
MMG35
PARTS MANUAL



www.discount-equipment.com

Discount Equipment

Discount-Equipment.com is your online resource for commercial and industrial quality parts and equipment sales.

Locations:

Florida (West Palm Beach): [561-964-4949](tel:561-964-4949)

Outside Florida TOLL FREE: [877-690-3101](tel:877-690-3101)

Need parts? Check out our website at www.discount-equipment.com

Can't find what you need?

Click on this link: <http://www.discount-equipment.com/category/5443-parts/> and fill out the request form.

Please have the machine model and serial number available in order to help us get you the correct parts. One of our experienced staff members will get back to you with a quote for the right part that your machine needs.

We sell worldwide for the brands: Genie, Terex, JLG, MultiQuip, Mayco, Toro/Stone, Diamond Products, Magnum, Airman, Mustang, Power Blanket, Nifty Lift, Atlas Copco, Chicago Pneumatic, Allmand Brothers, Essick, Miller Spreader, Skyjack, Lull, Skytrak, Tsurumi, Husquvarna/Target, Whiteman-Concrete/Mortar, Stow-Concrete/Mortar, Baldor, Wacker, Sakai, Snorkel, Upright, Mi-T-M, Sullair, Neal, Basic, Dynapac, MBW, Weber, Bartell, Bennar Newman, Haulotte, Ditch Runner, Blaw-Knox, Himoina, Best, Buddy, Crown, Edco, Wyco, Bomag, Laymor, Terremite, Barreto, EZ Trench, Takeuchi, Basic, Bil-Jax, Curtis, Gehl, Heli, Honda, ICS/PowerGrit, Puckett, Waldon, ASV, IHI, Partner, Imer, Clipper, MMD, Koshin, Rice, Gorman Rupp, CH&E, Cat Pumps, Comet, General Pump, Giant, AMida, Coleman, NAC, Gradall, Square Shooter, Kent, Stanley, Tamco, Toku, Hatz, Kohler, Robin, Wisconsin, Northrock, Oztec, Toker TK, Rol-Air, Small Line, Wanco, Yanmar

New Equipment - Used Equipment - Rental Equipment - Parts and Accessories

Discount Equipment

www.discount-equipment.com

561-964-4949

Parts: wbparts@Discount-Equipment.com

Sales: info@Discount-Equipment.com

INTRODUCTION

Before servicing this machine, make sure the engine start switch is turned to off "O", the circuit breakers are open (off, "O"), the emergency stop switch is closed (pushed in), and the negative (-) terminal on battery is disconnected. Attach a "DO NOT START" sign to the control panel. This will notify everyone that the unit is being serviced and will reduce the chance of someone inadvertently trying to start the unit. If the unit is connected to a remote start or transfer switch, make sure the remote switch is also off and tagged.

▲ WARNING

Before operating or servicing this equipment, read and understand the Magnum Operating Manual which was included with the unit when shipped from the factory.

Failure to do so increases the risk of injury to yourself or others.

Engine Make: _____

Engine Serial Number: _____

Engine Model Number: _____

Generator Make: _____

Generator Model Number: _____

Generator Serial Number: _____

Unit Model Number: _____

Unit Serial Number: _____

▲ WARNING

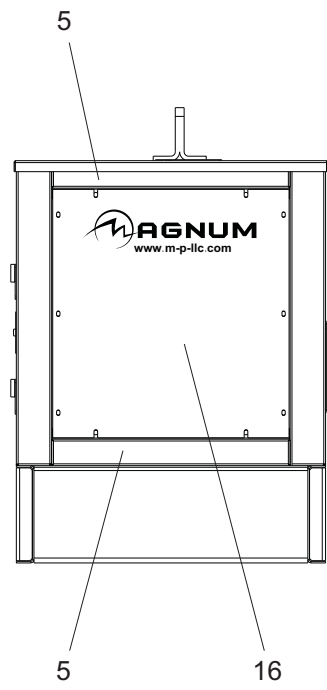
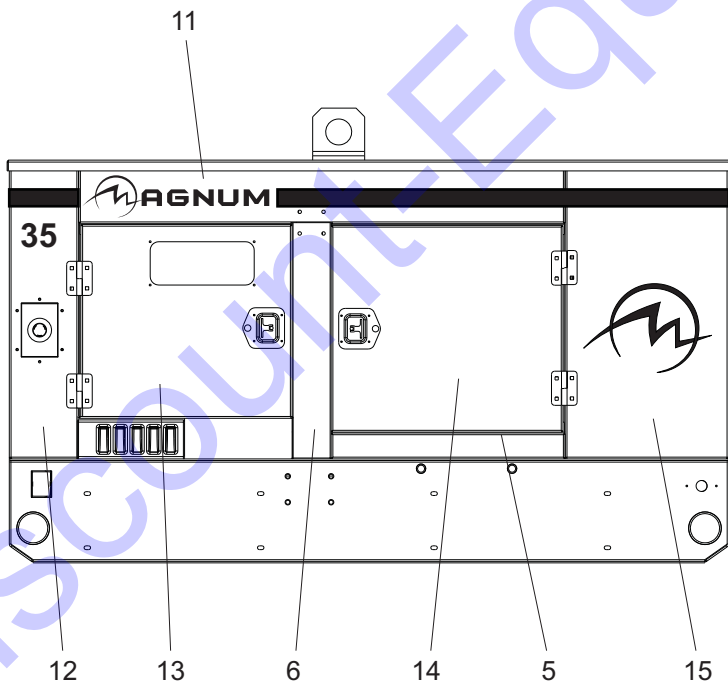
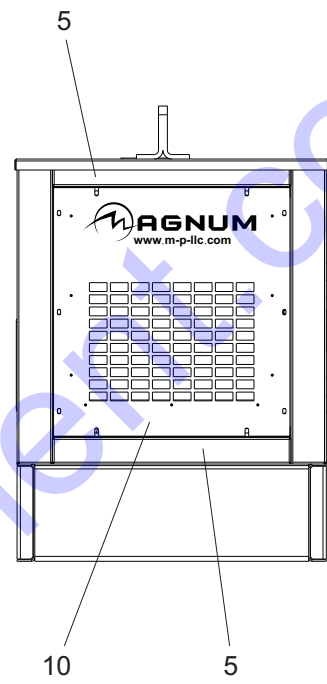
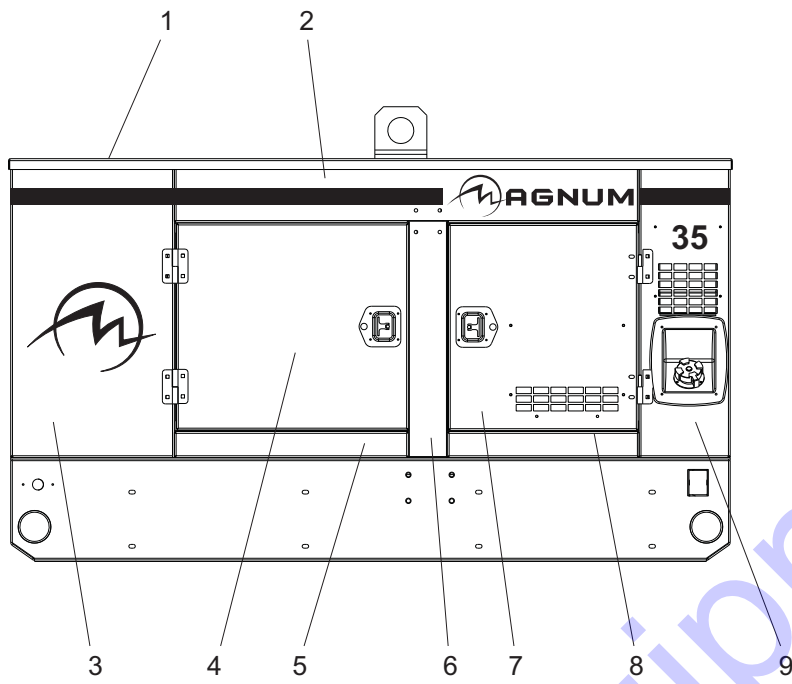
CALIFORNIA PROPOSITION 65 WARNING:

Diesel engine exhaust and some of its constituents are known to the state of California to cause cancer, birth defects and other reproductive harm.

TABLE OF CONTENTS

	Page
INTRODUCTION	2
TABLE OF CONTENTS	3
ENCLOSURE PANELS	4 - 5
UNIT DECALS	6 - 8
LUG DOOR ASSEMBLY	9
LUG PLATE ASSEMBLY	10
LUG BOX ASSEMBLY	11
OUTLET PANEL ASSEMBLY	12
CONTROL PANEL ASSEMBLY	13
OPERATOR PANEL ASSEMBLY	14
CIRCUIT BREAKER ASSEMBLY	15
CONTROL BOX ASSEMBLY	16 - 17
AIR CLEANER ASSEMBLY	18
EXHAUST SYSTEM ASSEMBLY	19
CABLE GUIDE BOX	20
FUEL TANK ASSEMBLY	21
ENGINE ASSEMBLY	22 - 23
GENERATOR ASSEMBLY	24 - 25
SKID ASSEMBLY	26 - 27
COOLING SYSTEM ASSEMBLY	28 - 29
ENGINE TO SKID ASSEMBLY	30 - 31
SMALL SIDE & END PANEL ASSEMBLIES	32
FRONT CORNER ASSEMBLY	33
LEFT REAR CORNER ASSEMBLY	34 - 35
RIGHT REAR CORNER ASSEMBLY	36 - 37
LEFT FRONT DOOR ASSEMBLY	38
RIGHT FRONT DOOR ASSEMBLY	39
LEFT REAR DOOR ASSEMBLY	40
RIGHT REAR DOOR ASSEMBLY	41
END PANEL ASSEMBLIES	42
SIDE PANEL ASSEMBLIES	43
ROOF ASSEMBLY	44 - 45
TRAILER ASSEMBLY - SINGLE AXLE	46 - 47
TRAILER ASSEMBLY - TANDEM AXLE	48 - 49
BRAKE LINES - SINGLE AXLE	50
BRAKE LINES - TANDEM AXLE	51

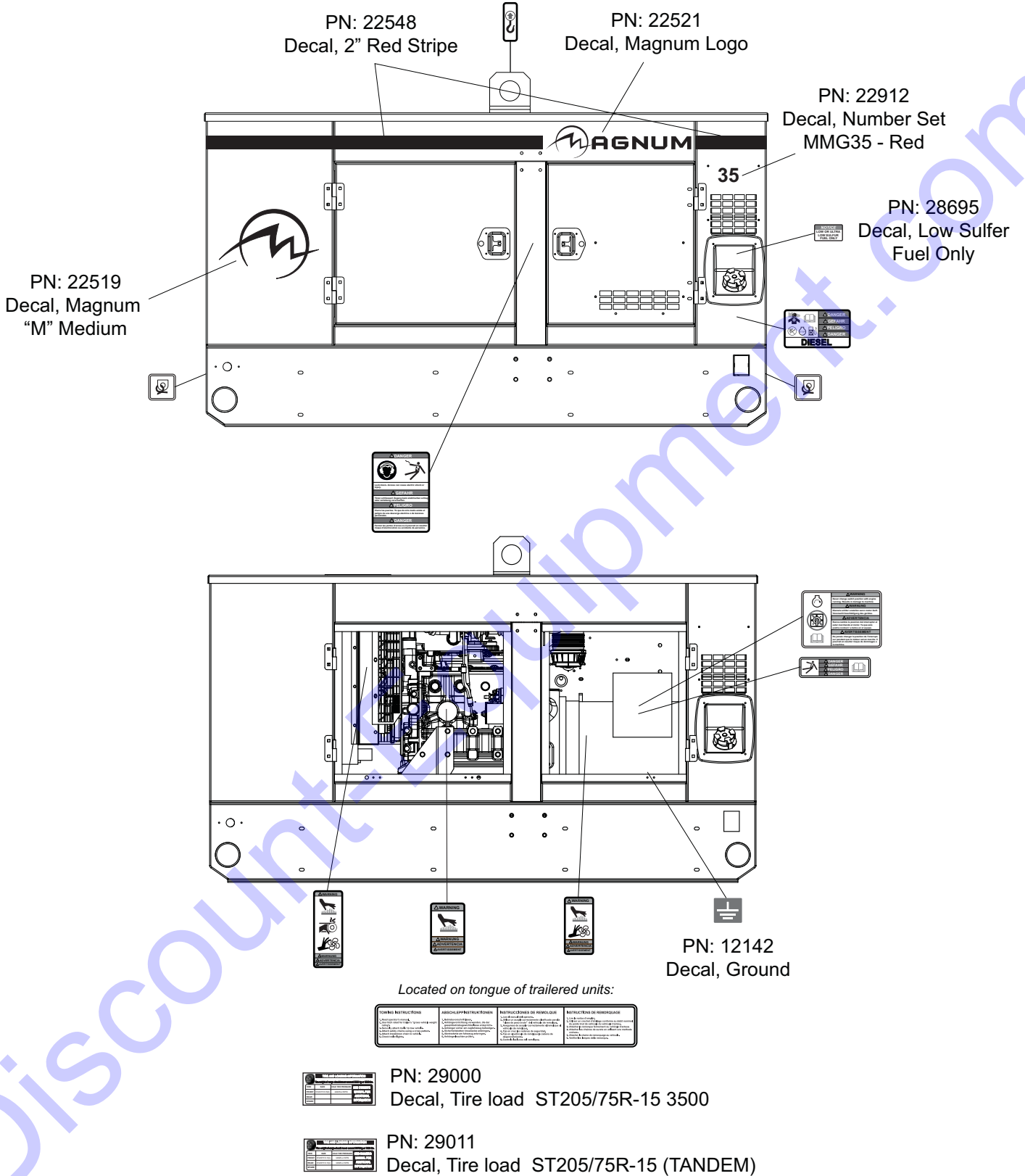
ENCLOSURE PANELS



ITEM	PAGE	QTY	DESCRIPTION
1	Page 44	1	Roof panel assembly
2	Page 43	1	Left top side panel assembly
3	Page 33	1	Left front corner assembly
4	Page 38	1	Left front door assembly
5	Page 32	5	End/side panel assembly
6	Page 43	2	Center panel assembly
7	Page 40	1	Left rear door assembly
8	Page 32	1	Side panel assembly (short)
9	Page 34	1	Left rear corner assembly
10	Page 42	1	Rear panel assembly
11	Page 43	1	Right top side panel assembly
12	Page 36	1	Right rear corner assembly
13	Page 41	1	Right rear door assembly
14	Page 39	1	Right front door assembly
15	Page 33	1	Right front corner assembly
16	Page 42	1	Front panel assembly

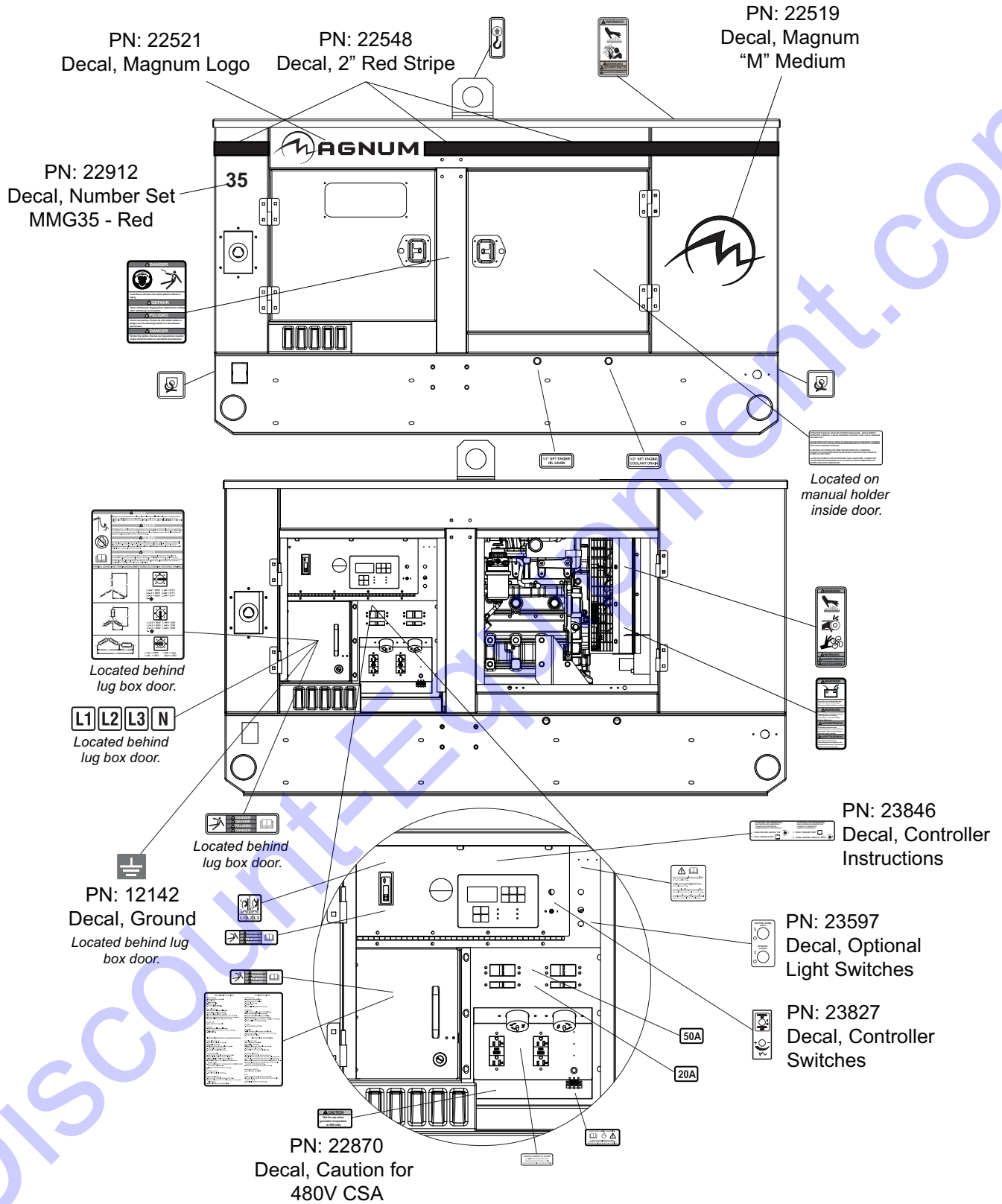
Discount-Equipment.com

UNIT DECALS



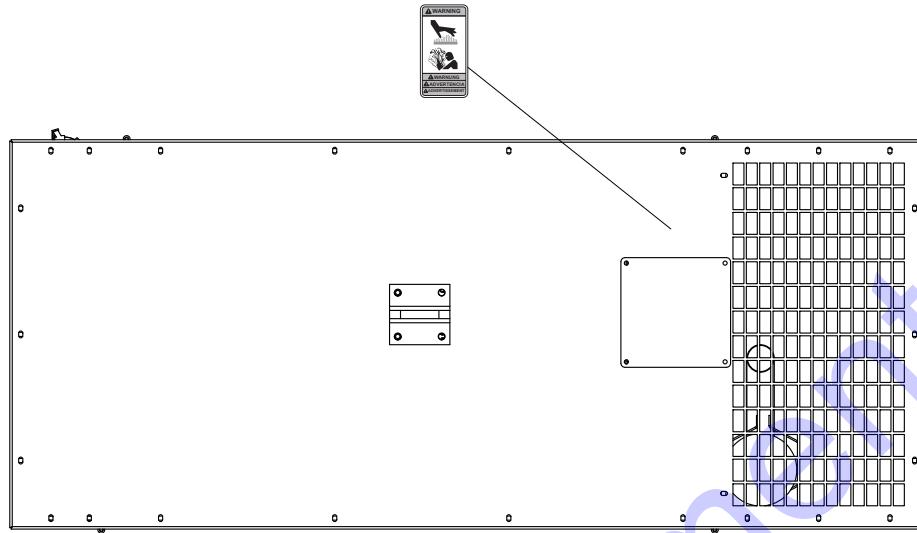
Note: All safety and operating decals are located on decal sheet 23599, unless otherwise noted.

UNIT DECALS

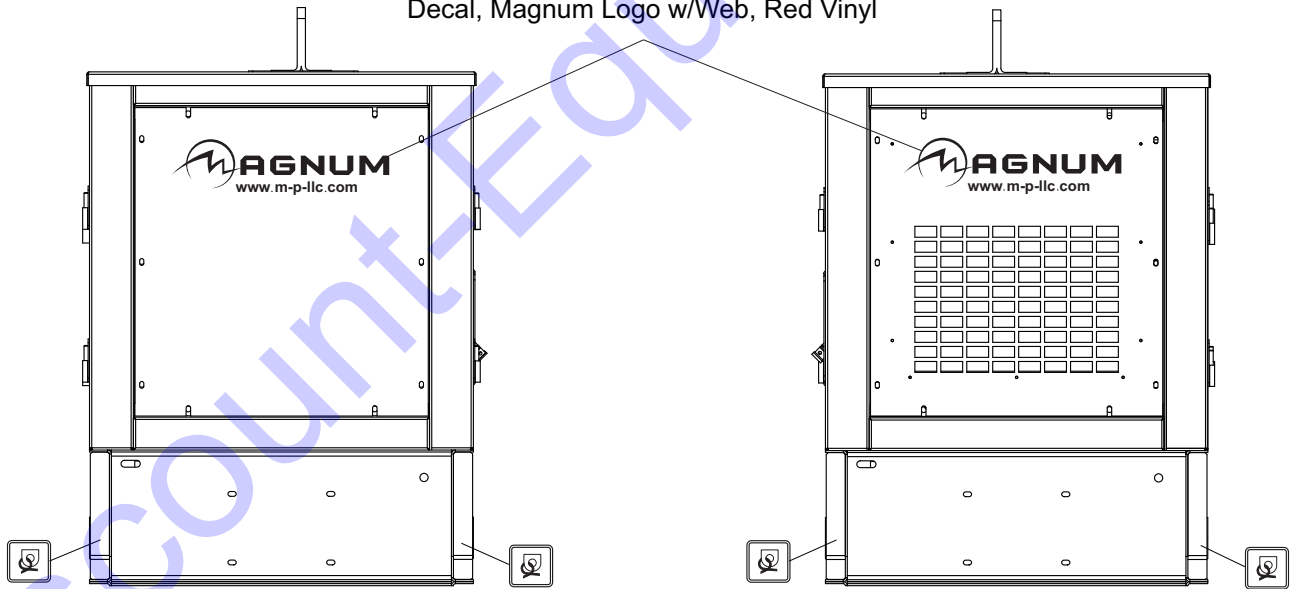


Note: All safety and operating decals are located on decal sheet 23599, unless otherwise noted.

UNIT DECALS

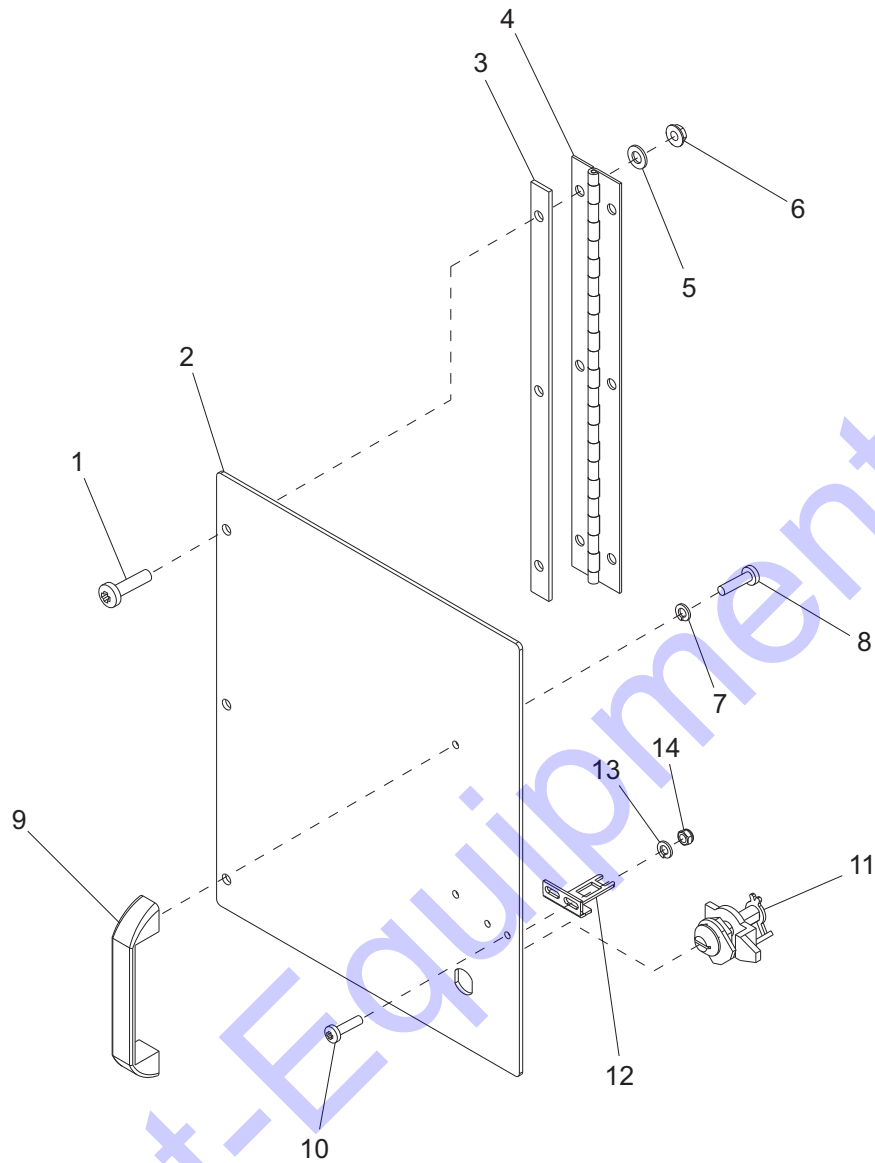


PN: 11275
Decal, Magnum Logo w/Web, Red Vinyl



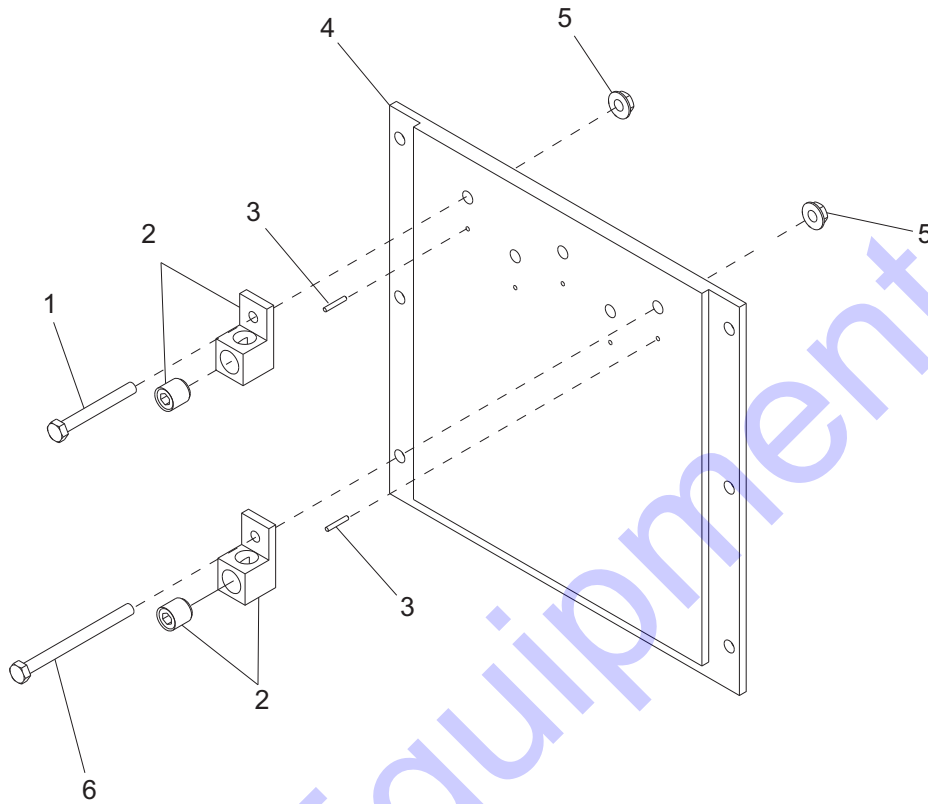
Note: All safety and operating decals are located on decal sheet 23599, unless otherwise noted.

LUG DOOR ASSEMBLY



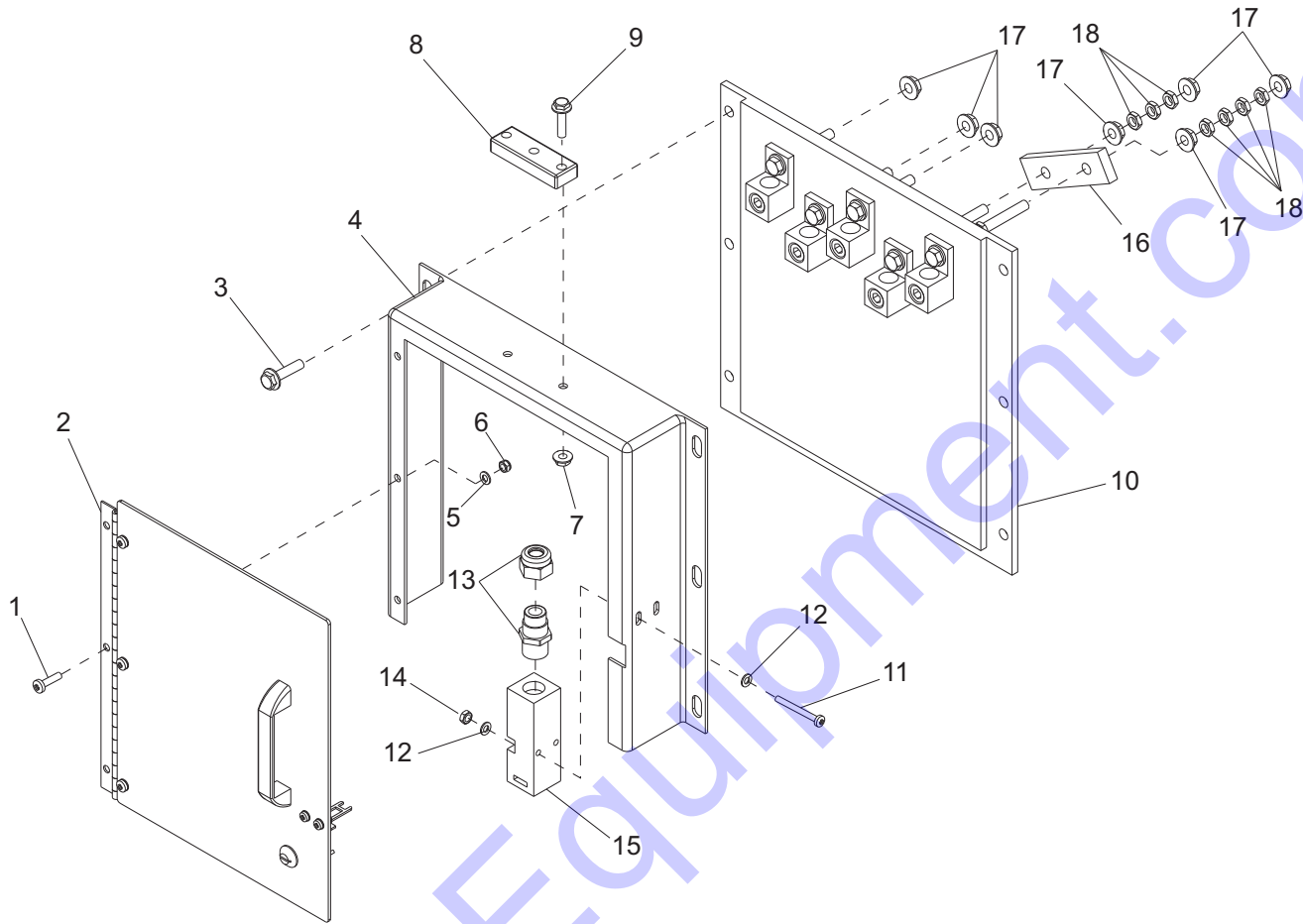
ITEM	PART	QTY	DESCRIPTION	NOTES
1	60398	3	Screw, 10-32X.500 pan phil ss	
2	20681W	1	Door, lug	
3	20684W	1	Spacer, hinge - lug door	
4	18746	1	Hinge, lug door 11.125"	
5	60237	3	Washer, #10 flat .495/.036 SAE	
6	61045	3	Nut, 10-32 srflg	
7	60252	2	Washer, #10 split lock	
8	60068	2	Screw, #10 - 24 x .500 pan phil	
9	18893	1	Handle, lug door	
10	60525	2	Screw, 8-32X1.500 pan phil	
11	20762	1	Lock, door - 1/4 turn cam	
12	18112	1	Key, lockout switch (90°)	
13	60269	2	Washer, #8 flat .433/.036	
14	60270	2	Nut, 8-32 nylock	

LUG PLATE ASSEMBLY



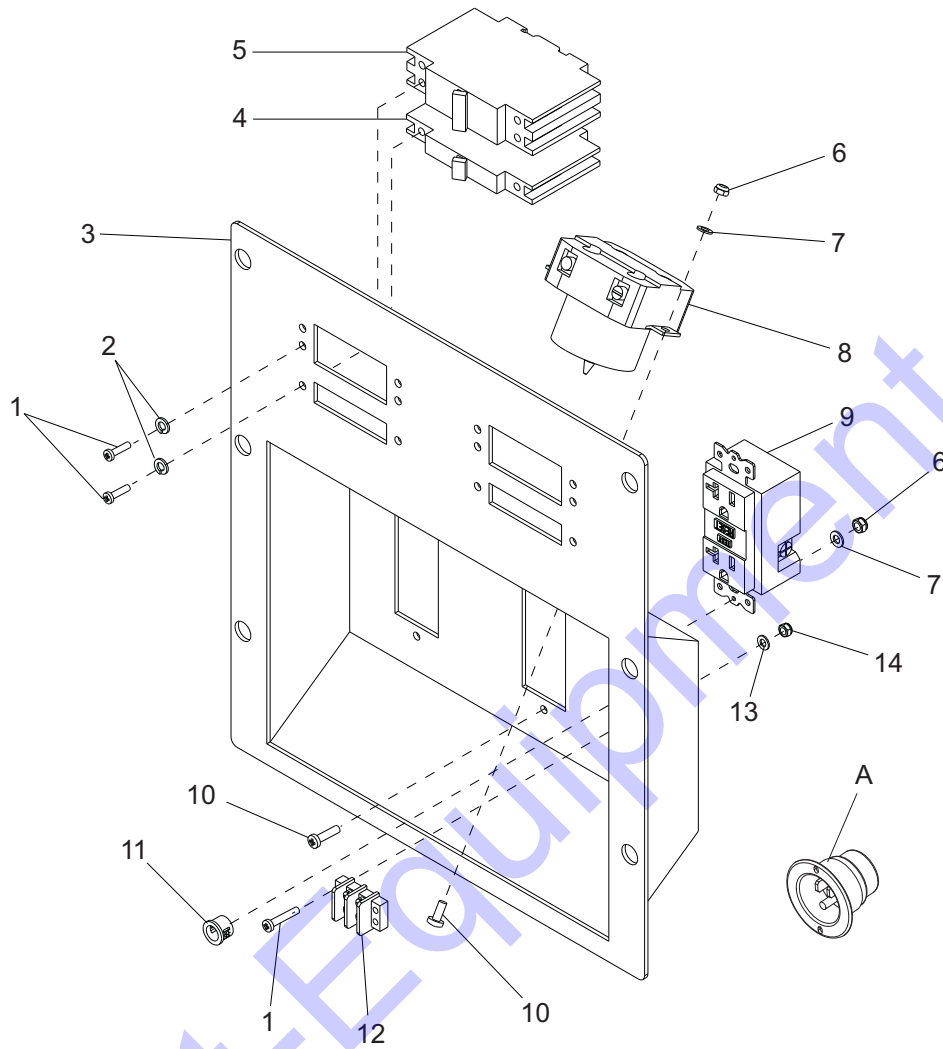
ITEM	PART	QTY	DESCRIPTION	NOTES
1	60737	3	Screw, .312-18X2.500 std hex	
2	65344	5	Lug, terminal 350MCM, drilled	
3	60048	5	Pin, roll .125 x .625	
4	18613	1	Plate, Glastic	
5	60095	5	Nut, .312-18 ser flg G5 case hard	
6	60404	2	Screw, .312-18X4.00 std hex	

LUG BOX ASSEMBLY



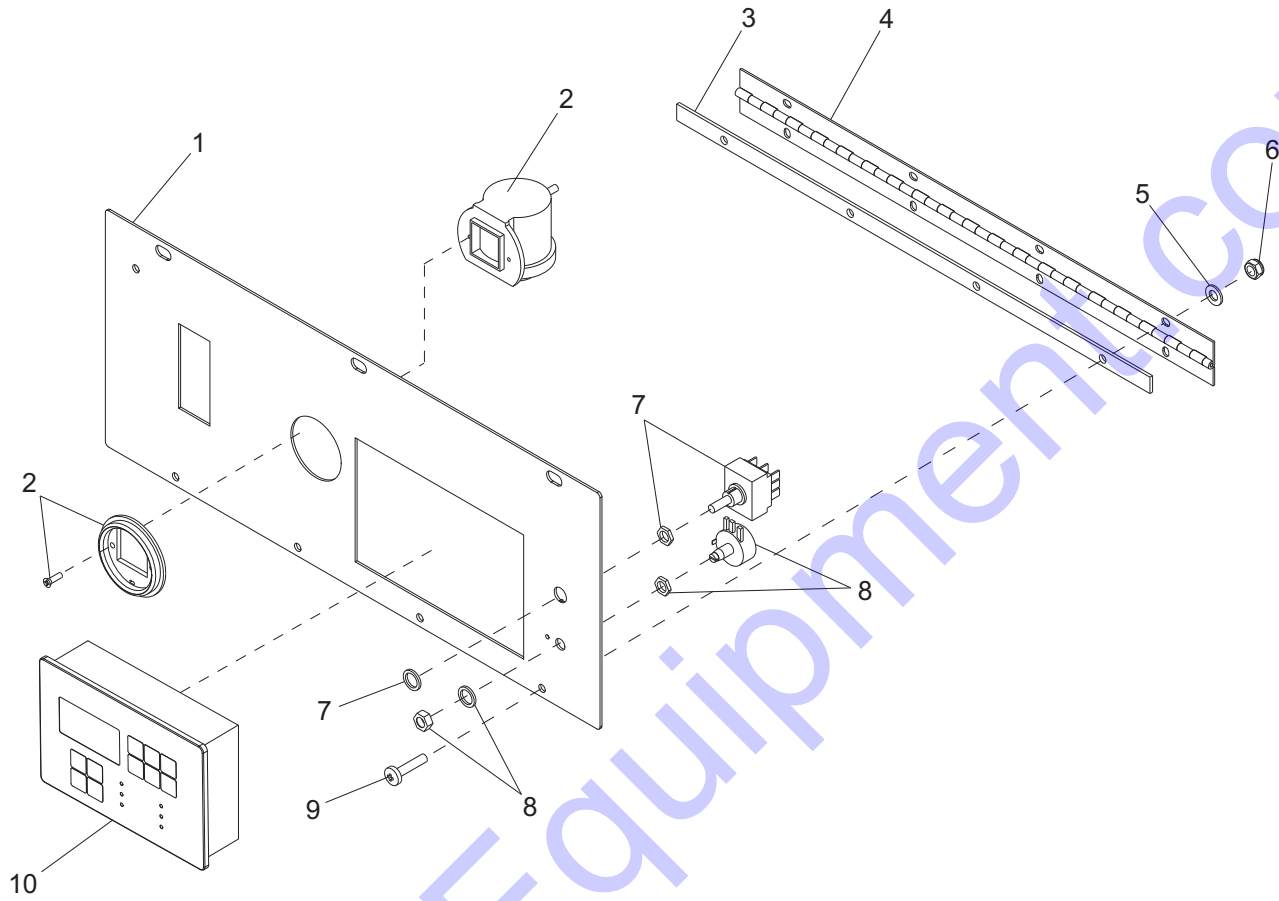
ITEM	PART	QTY	DESCRIPTION	NOTES
1	60524	3	Screw, 10-24X.625 pan phil	
2	22940	1	Assembly, lug door	
3	61091	6	Screw, .312-18X1.00 ser flg hex	
4	20680W	1	Panel, lug box	
5	60237	3	Washer, #10 flat .495/.036 SAE	
6	60457	3	Nut, 10-24 nylock	
7	60161	2	Nut, .250-20 ser flg	
8	18936Z	1	Bracket, door prop	
9	60479	2	Screw, .250-20X1.000 ser flg hex	
10	18989	1	Plate - assy, lug	
11	60525	2	Screw, 8-32X1.500 pan phil	
12	60269	4	Washer, #8 flat .433/.036	
13	15864	1	Strain relief - .50 NPT watertight	
14	60270	2	Nut, 8-32 nylock	
15	18111	1	Switch, lockout (1 NO)(1 NC)	
16	19410	1	Connector, LO to grnd	
17	60095	7	Nut, .312-18 ser flg G5 case hard	
18	60285	7	Nut, .312-18 hex G5	

OUTLET PANEL ASSEMBLY



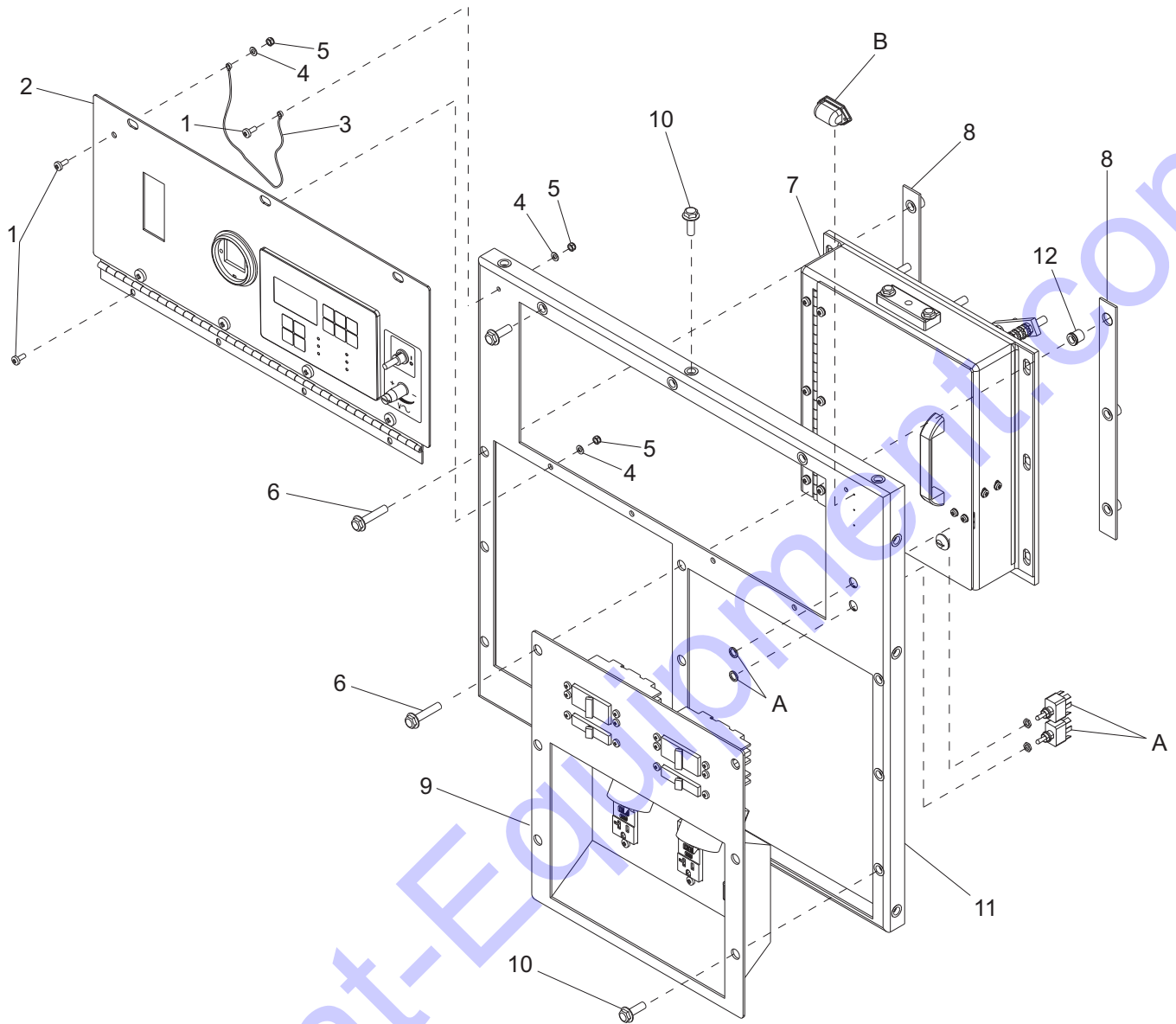
ITEM	PART	QTY	DESCRIPTION	NOTES
1	60046	14	Screw, #6 - 32 x .750 pan hd phil	
2	60058	12	Washer, split lock #6	
3	20865W	1	Weldment, receptacle/panel	
4	18091	2	Breaker, 20A 240V 1-pole	
5	18092	2	Breaker, 50A 240V 2-pole	
6	60457	8	Nut, 10-24 nylock	
7	60237	8	Washer, #10 flat .495/.036 SAE	
8	18089	2	Receptacle, 120/240V 50A twist lock	
9	14130	2	Receptacle, 120V 20A GFI	
10	60068	8	Screw, 10-24X.500 pan phil	
11	19163	1	Bushing, .500 OD x .375 ID	
12	18890	1	Terminal block, 2-pos	
13	60269	2	Washer, #8 flat .433/.036	
14	60291	2	Nut, 8-36 hex	
A	65285	1	Receptacle, 120V/15A inlet	Option: Edison (5-15R) flange

CONTROL PANEL ASSEMBLY



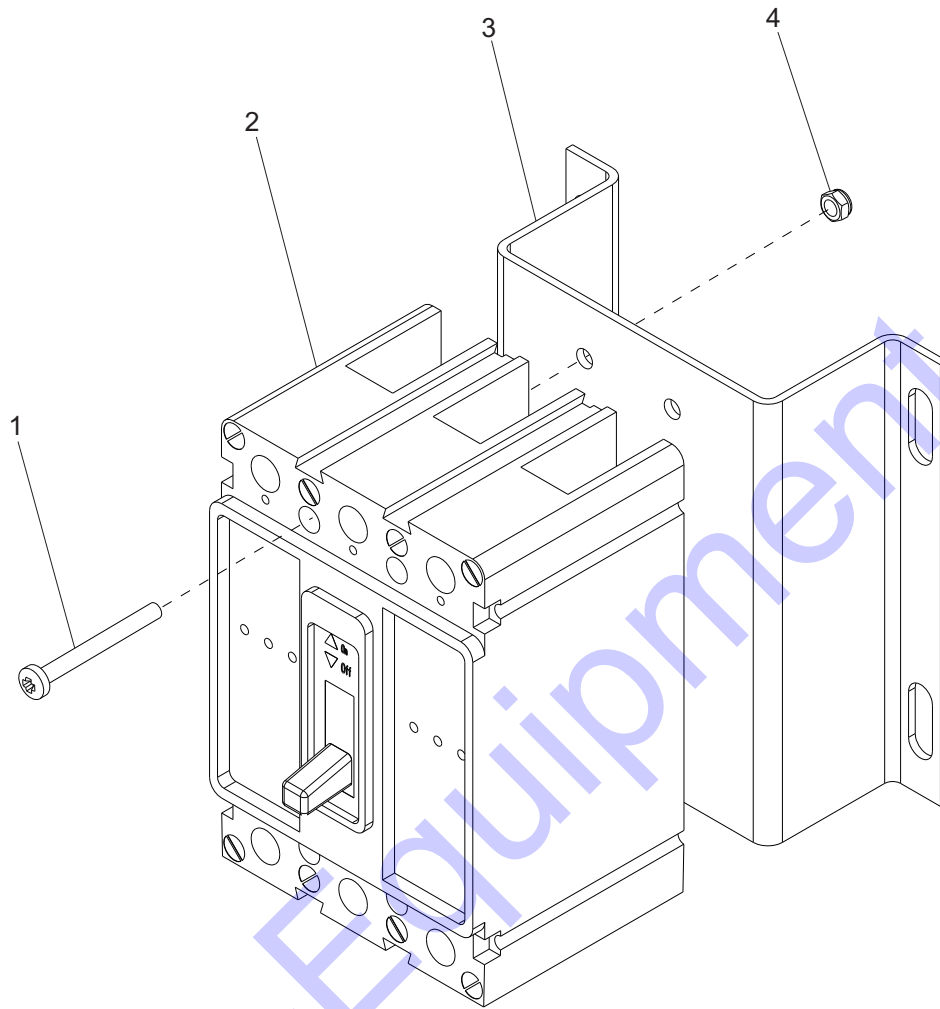
ITEM	PART	QTY	DESCRIPTION	NOTES
1	23832W	1	Panel, control	
2	18609	1	Kit, filter minder gauge	
3	20870W	1	Spacer, control door	
4	18598	1	Hinge, controller panel - 18.75	
5	60237	4	Washer, #10 flat .495/.036 SAE	
6	60457	4	Nut, 10-24 nylock	
7	25077	1	Switch, toggle - S.P.S.T. 20A VAC	
8	26229	1	Kit, voltage adjustment potentiometer	With wire & connectors
9	60524	4	Screw, 10-24X.625 pan phil	
10	66199	1	Controller, eng/gen	
-	18934	1	Potentiometer guard (not shown)	

OPERATOR PANEL ASSEMBLY



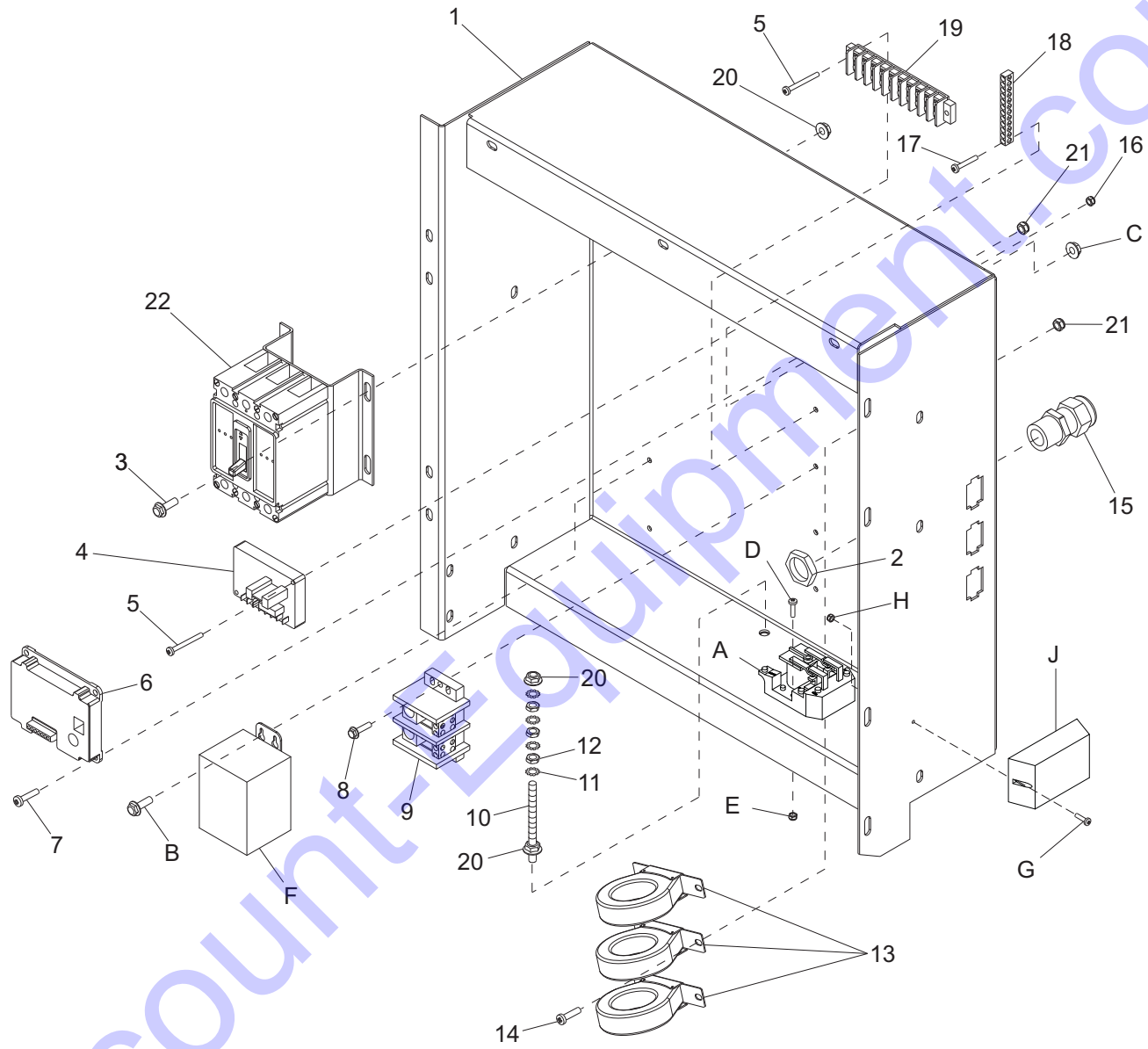
ITEM	PART	QTY	DESCRIPTION	NOTES
1	60068	8	Screw, 10-24X.500 pan phil	
2	Page 13	1	Control panel assembly	
3	19211	2	Tether, cable nylon - 10.5" long	
4	60237	4	Washer, #10 flat .495/.036 SAE	
5	60457	4	Nut, 10-24 nylock	
6	60160	6	Screw, M8 x 1.25 x 30 hex ser flg	
7	22940	1	Assembly, lug door/panel	
8	19267B	2	Plate, glastic bracket	
9	20864	1	Assembly, receptacle panel	
10	60009	18	Screw, M8 x 1.25 x 25 hex ser flg	
11	22650W	1	Panel, control	
12	60022	6	Insert, M8 threaded	
A	25077	2	Switch, toggle - S.P.S.T. 20A VAC	Option: Interior lights
B	23025	1	Light, interior control panel	Option: Control Panel Light

CIRCUIT BREAKER ASSEMBLY



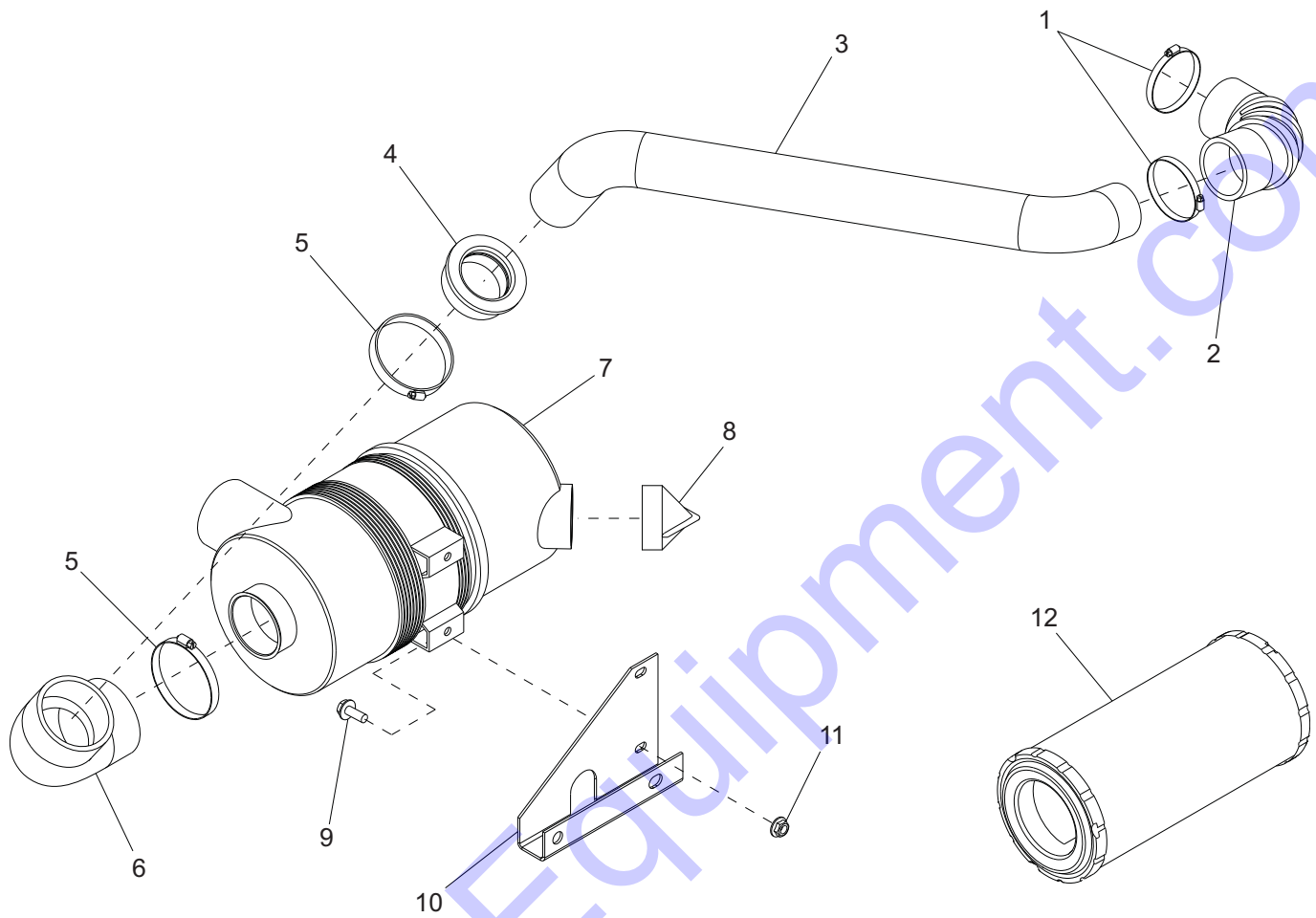
ITEM	PART	QTY	DESCRIPTION	NOTES
1	60377	4	Screw, 8-32X1.750 pan phil	
2	65446	1	Breaker, 125A	
3	18747B	1	Bracket, breaker mounting	
4	60270	4	Nut, 8-32 nylock	

CONTROL BOX ASSEMBLY



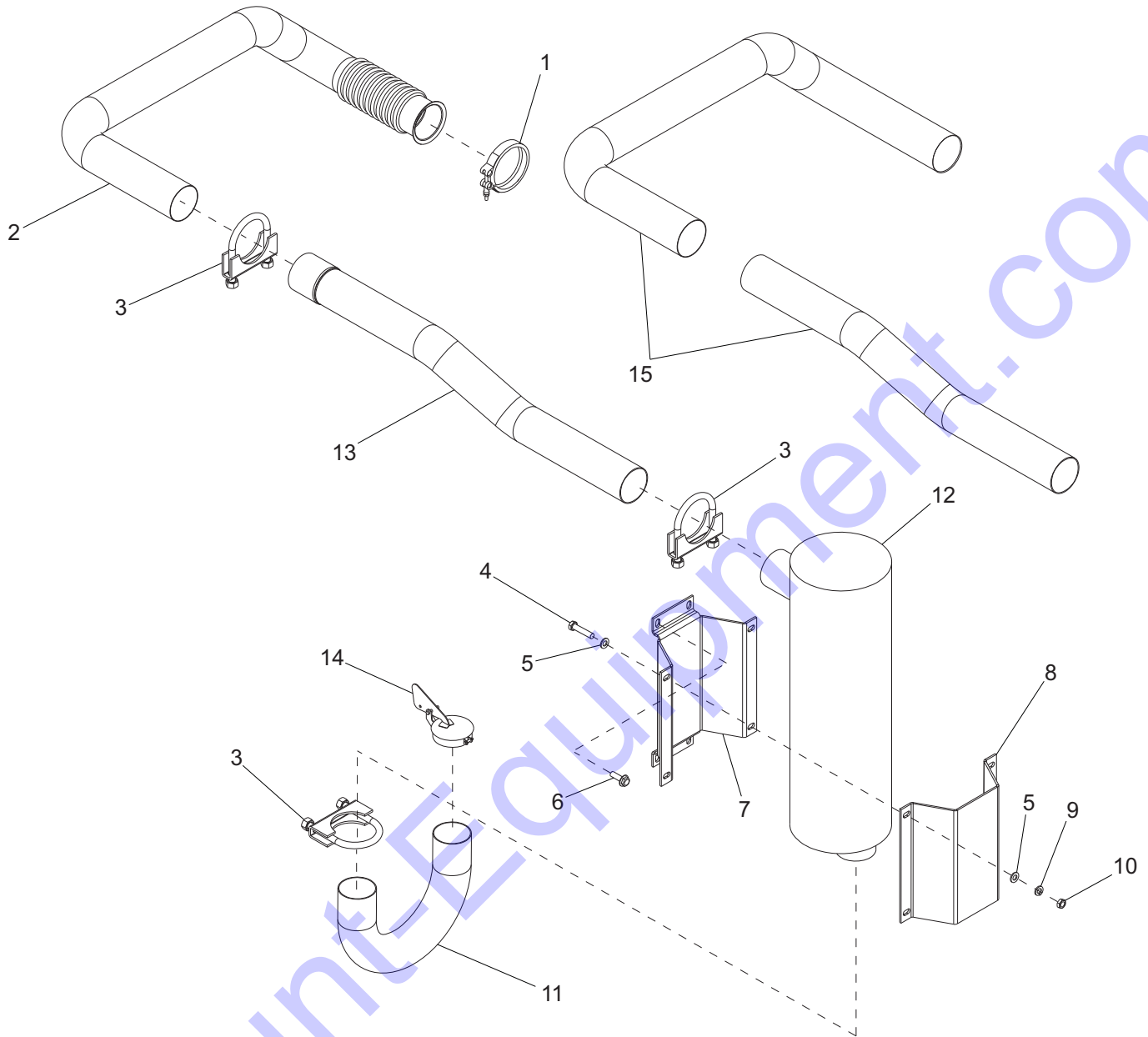
ITEM	PART	QTY	DESCRIPTION	NOTES
1	22935B	1	Weldment, control box	
2	22465	1	Nut, plastic	
3	61091	4	Screw, .312-18X1.000 ser flg hex	
4	18556	1	Regulator, voltage SE 350	
5	60406	4	Screw, 8-32X1.000 pan phil	
6	22735	1	Board, governor controller - 35	
7	60524	2	Screw, 10-24X.625 pan phil	
8	60479	2	Screw, .250-20X1.000 ser flg hex	
9	18557	1	Block, terminal 2-pole	
10	18992	1	Stud, ground	
11	60293	1	Washer, .312 ext star	
12	60077	3	Nut, M8 hex jam	
13	65442	3	Transformer, current 200:5A	
14	60068	6	Screw, 10-24X.500 pan phil	
15	22441	1	Bushing, 3/0 and 4/0 cable	
16	60061	2	Nut, 10-32 hex nylock	
17	60396	2	Screw, 10-32X1.250 pan hd phil	
18	14204	1	Kit, ground bar	
19	14203	1	Block, terminal -10 pos.	
20	60095	6	Nut, .312-18 ser flg case hard	
21	60457	8	Nut, 10-24 nylock	
22	Page 15	1	Assy, circuit breaker	
A	65461	1	Relay, 30A dpdt 120 VAC power	Option: Buck transformer
B	60175	2	Screw, .250-20X.500 ser flg hex	Option: Buck transformer
C	60161	2	Nut, .250-20 ser flg	Option: Buck transformer
D	60396	2	Screw, 10-23X1.250 pan phil	Option: Buck transformer
E	60061	2	Nut, 10-32 nylock	Option: Buck transformer
F	21487	1	Transformer, 1.13:1 1-phase 500VA	Option: Buck transformer
G	60524	2	Screw, 10-24X.625 pan phil	Option: Battery charger
H	60457	2	Nut, 10-24 nylock	Option: Battery charger
J	65326	1	Charger, battery - 2 amp, 3 stage	Option: Battery charger

AIR CLEANER ASSEMBLY



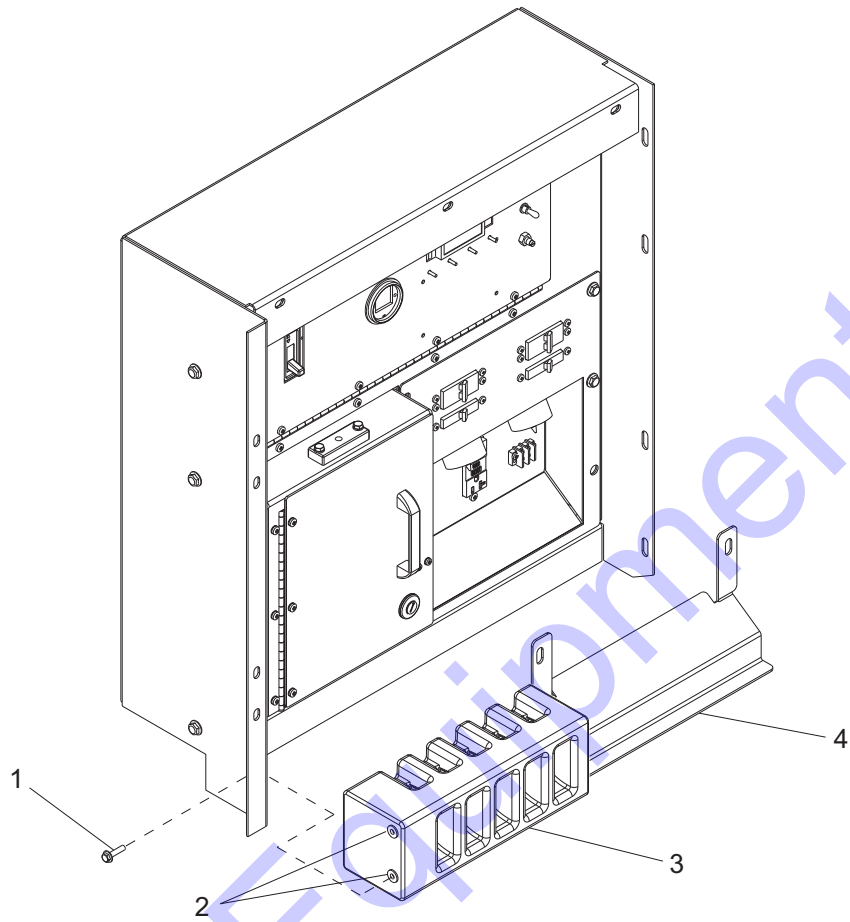
ITEM	PART	QTY	DESCRIPTION	NOTES
1	19336	2	Clamp, hose - SAE 44 (2.31-3.25)	
2	22665	1	Hose, rubber 90 elbow - 2.25"	
3	23095	1	Pipe, air intake	
4	22872	1	Insert, air hose reducer 2.25-3.0	
5	18663	2	Clamp, hose - SAE 60 (3.31-4.25)	
6	22873	1	Elbow, 90 deg molded rubber	
7	22967	1	Filter, air (housing & element)	
8	19277	1	Cap, dust ejector	
9	61091	2	Screw, .312-18X1.000 ser flg hex	
10	22946B	1	Bracket, air filter	
11	60095	2	Nut, .312-18 ser flg case hard	
12	22874	1	Element, air filter	

EXHAUST SYSTEM ASSEMBLY



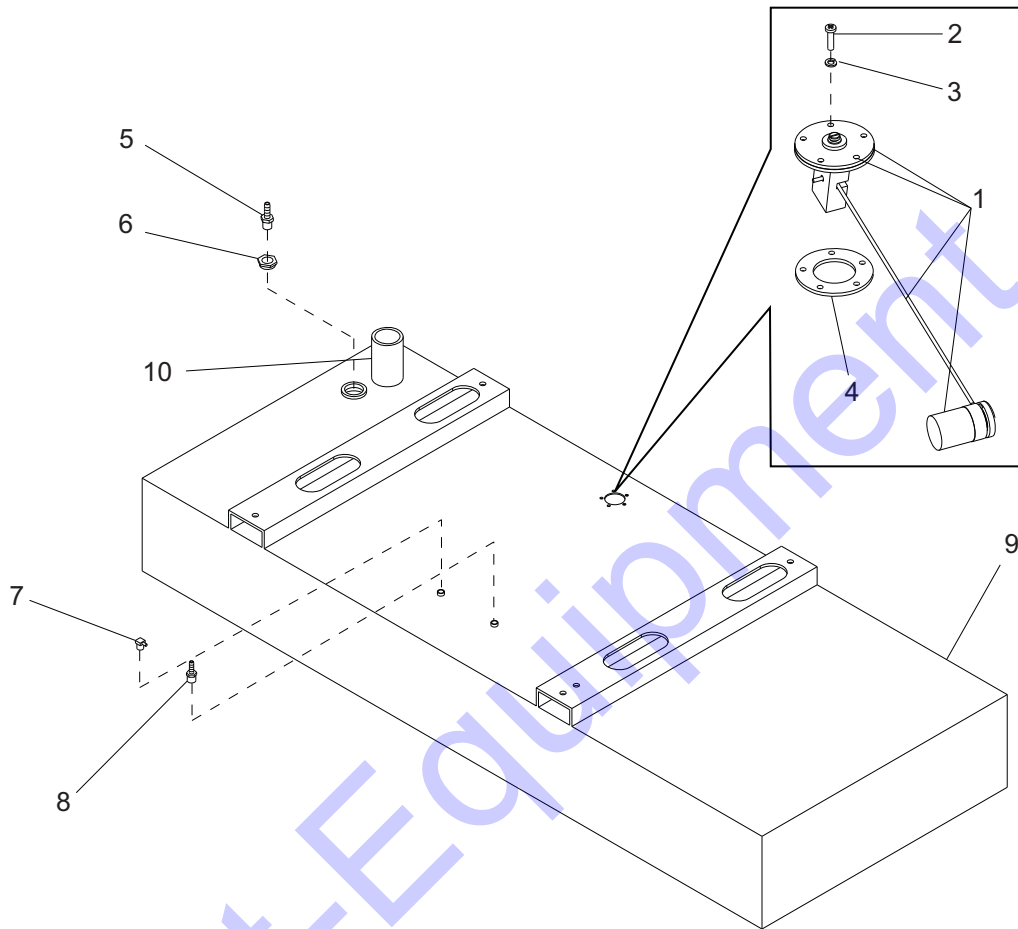
ITEM	PART	QTY	DESCRIPTION	NOTES
1	22712	1	Clamp, 2.75" V-band	
2	22948	1	Pipe, exhaust	
3	15550	3	Clamp, muffler 2 1/2" heavy duty	With hardware
4	60147	4	Screw, .375-16X3.500 hex hd	
5	60119	8	Washer, flat .312	
6	60114	4	Screw, M8 x 1.25 x 20 hex ser flg	
7	20886B	1	Bracket, muffler - lower	
8	20887B	1	Bracket, muffler - upper	
9	60206	4	Washer, split lock .375"	
10	60145	4	Nut, .375-16 hex ser flg lock	
11	22674	1	Pipe, exhaust - up	
12	22670	1	Muffler, residential grade	
13	23092	1	Pipe, exhaust - fwd - 35	
14	25647	1	Cap, rain - 2.50	
15	26479	1	Sleeve, high temp - 3.00 in. - 7.58 ft.	
-	19336	4	Clamp, hose (2.31-3.25)	Not shown

CABLE GUIDE BOX



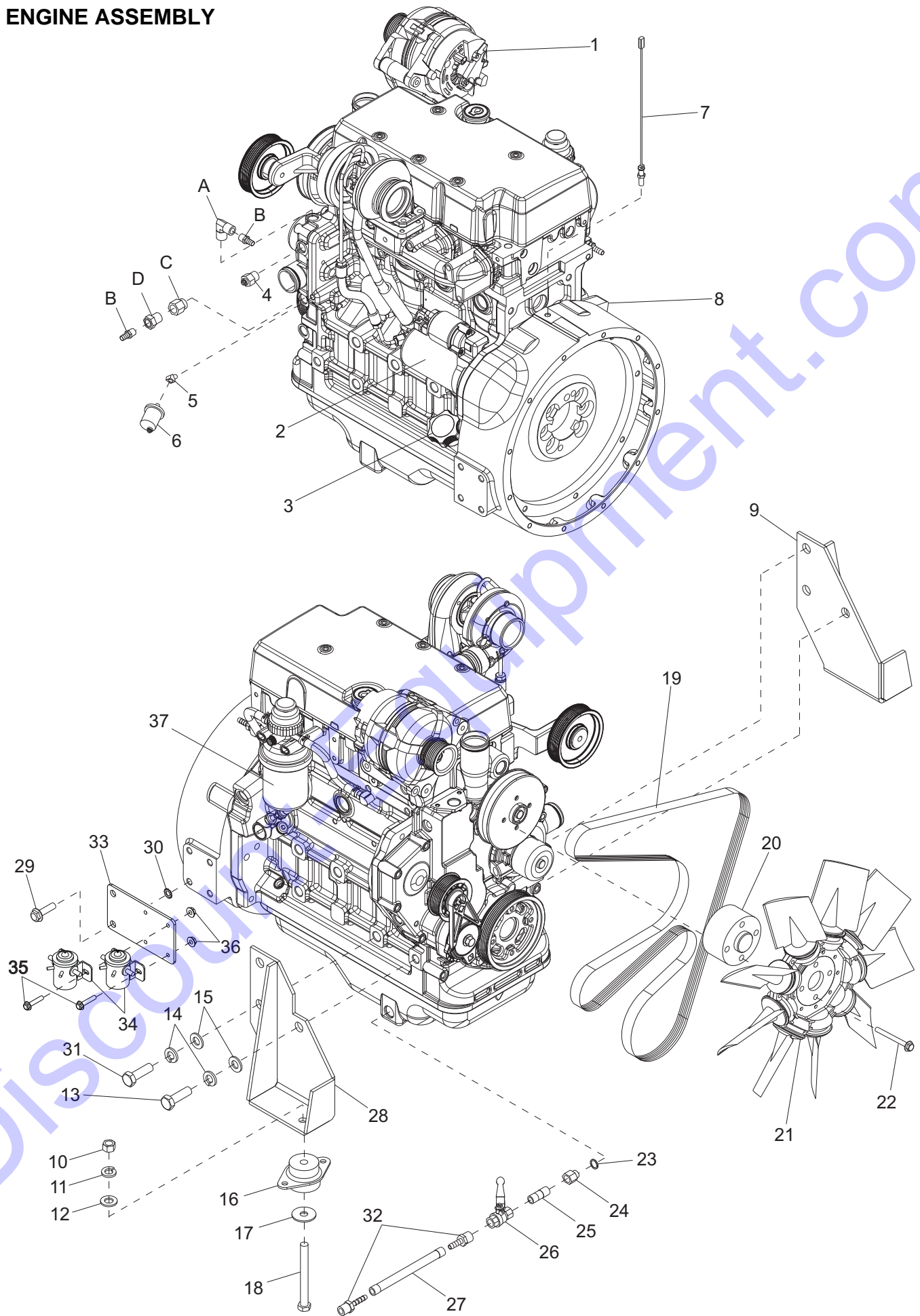
ITEM	PART	QTY	DESCRIPTION	NOTES
1	60024	5	Screw, M6x1.0x25 hx ser flg	
2	60023	5	Insert, M6 threaded	
3	19201	1	Guide, cables	
4	20871B	1	Panel, wire guide	

FUEL TANK ASSEMBLY



ITEM	PART	QTY	DESCRIPTION	NOTES
1	20571	1	Sender, fuel	
2	60062	5	Screw, 10-32X.750 pan hd phil	
3	60252	5	Washer, #10 split lock	
4	22323	1	Gasket, fuel sending unit	
5	25496	1	Fitting, str.750MNPTX1.000 barb	
6	22725	1	Fitting, 1.50MNPT x .750FNPT	
7	19295	1	Fitting, .250MNPTx.250 barb 90 deg.	
8	19180	1	Fitting, .375 NPTx.312 hose barb	
9	22578B	1	Tank, fuel - 74 gal	
10	19778	1	Nipple, pipe - 2.00NPT x 4.00	

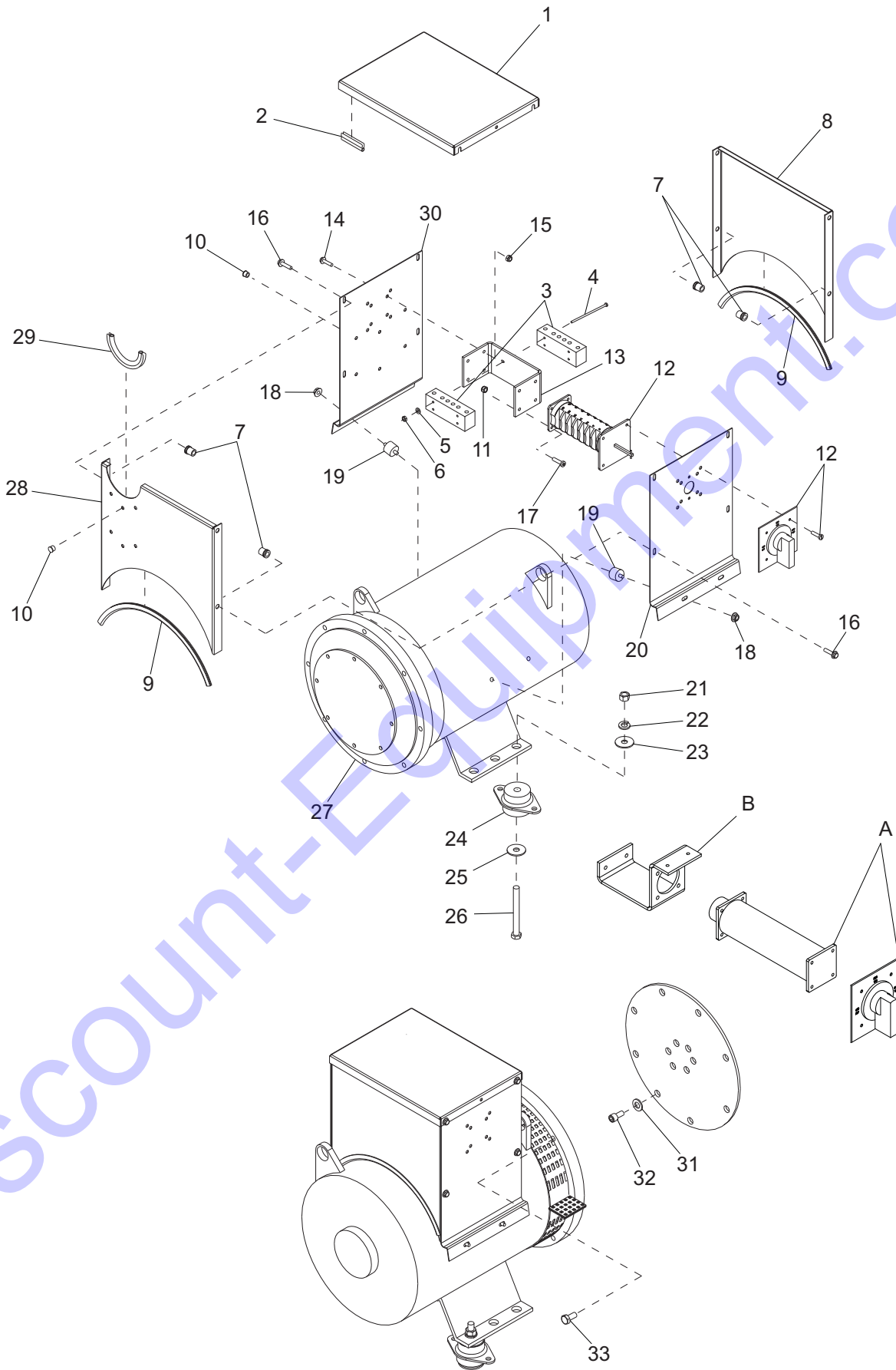
ENGINE ASSEMBLY



ITEM	PART	QTY	DESCRIPTION	NOTES
1	26270	1	Alternator, engine - 35/55	
2	23105	1	Starter, engine - 4024/5030	
3	23106	1	Cap, oil fill/dipstick - 4024/5030	
4	22690	1	Sensor, coolant temp. - M18 x 1.5	
5	22331	1	Fitting, .125NPT X 45 deg street - brs	
6	18106	1	Sensor, oil pressure	
7	23099	1	Sensor assy, mag pick-up	
8	26734	1	Engine, Deere 4024TF281	
9	22624B	1	Weldment, lft engine mount	
10	61093	2	Nut, .500-13 hex G8	
11	61095	2	Washer, .500 split lock	
12	61096	2	Washer, .500 flat 1.375/.110 hard	
13	60489	2	Screw, M16 x 40 hex HD	
14	60194	6	Washer, split lock M16	
15	60193	6	Washer, flat M16	
16	22788	2	Mount, rubber shock 350 lbs.	
17	18085	2	Washer, snubber 2.00 O.D. - 51 ID	
18	61104	2	Screw, .500-13X5.500 std hex G8	
19	23107	1	Belt, fan - 4024	
20	22662	1	Spacer, fan - 35/55	
21	22596	1	Fan, engine - MMG35 18.00"	
22	60715	4	Screw, M8 x 1.25 x 80 hex hd	
23	19467	1	Seal, M22	
24	19307	1	Fitting, .500FNPT X M22X1.5 brass	
25	60438	1	Nipple, pipe, .500NPT x close	
26	19279	1	Valve, ball 90 - .50 NPT	
27	50201	1	Hose, coolant - .625 I.D.	
28	22623B	1	Weldment, rht engine mount	
29	60072	2	Screw, M12 x 25 hx ser flg	
30	60369	2	Washer, ext star lock M12	
31	60381	4	Screw, M16X50 hx hd	
32	60502	2	Fitting, .500MNPT X .625 hose barb	
33	22848B	1	Bracket, ignition solenoid	
34	18081	2	Relay, ignition solenoid (12V-65A)	
35	60523	4	Screw, .250-20X.875 ser flg case hard	
36	60161	4	Nut, .250-20 ser flg G5	
37	23145	1	Filter, fuel - 4024/5030	
-	23144	1	Filter, oil - 4024/5030	Not shown
A	23146	1	Fitting, 90-.250MNPTX.375FNPT brs	Option: coolant heater
B	25931	2	Fitting, strt-.375NPTX.625 barb	Option: coolant heater
C	22866	1	Fitting, strt-.125FNPTXM14X1.5	Option: coolant heater
D	23391	1	Fitting, strt-.375FNPTX.125MNPT brs	Option: coolant heater

Note: Engine and generator parts used in all Magnum Products LLC equipment carry the Original Equipment Manufacturer (OEM) warranty unless otherwise stated. OEM warranty parts must be purchased through an OEM dealer.

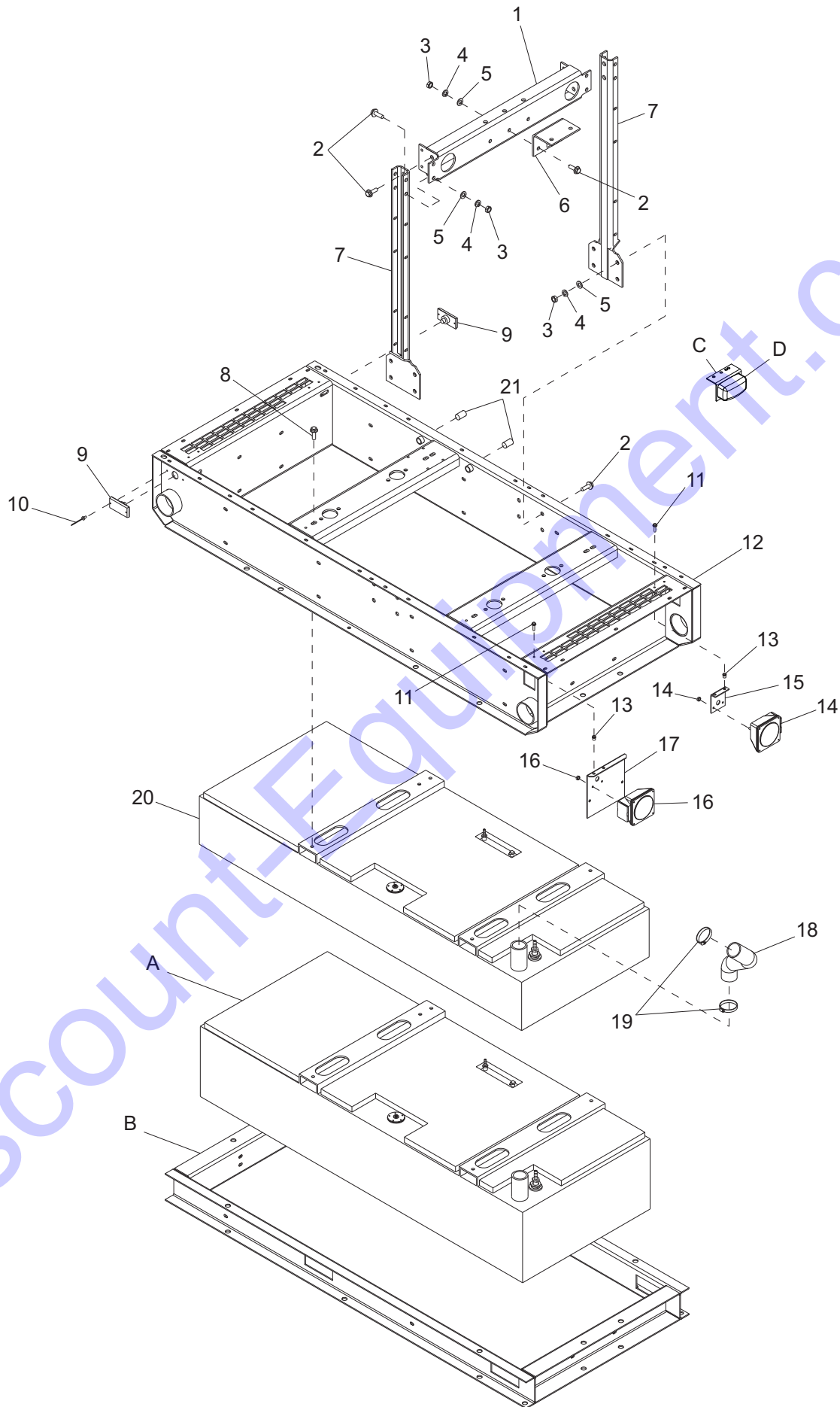
GENERATOR ASSEMBLY



ITEM	PART	QTY	DESCRIPTION	NOTES
1	22101B	1	Panel, generator box top	
2	19056	1	Seal, generator box (top)	
3	65481	2	Block, terminal - 6 pos.	
4	60725	2	Screw, 8-32X2.500 pan head slot	
5	60237	2	Washer, #10 flat .495/.036 SAE	
6	60318	2	Nut, 8-32 hex	
7	60023	8	Insert, M6 threaded	
8	22103B	1	Panel, rear generator box	
9	19045	2	Seal, generator box	
10	65491	12	Plug, hole .281 X .06 th black	
11	60457	4	Nut, 10-24 nylock G5	
12	65456	1	Switch, phase selector - 63A, 3-pos.	
13	22815B	1	Bracket, phase switch	
14	60175	4	Screw, .250-20X.500 ser flg hex	
15	60161	4	Nut, .250-20ser flg	
16	60135	8	Screw, M6-1.00X20 ser flg hex G8.8	
17	60524	4	Screw, 10-24X.625 pan phil	
18	60161	4	Nut, .250-20 ser flg	
19	22283	4	Bolt, flex sandwich mount	
20	22285B	1	Panel, side generator box	
21	61093	2	Nut, .500-13 hex G8	
22	60204	2	Washer, split lock .500 hvy lb	
23	60670	2	Washer, .500 flat 1.060/.110 lb	
24	22788	2	Mount, rubber shock 350 lbs.	
25	18085	2	Washer, snubber - 2.00 O.D. .51 I.D.	
26	61094	2	Screw, .500-13X3.500 std hex G8	
27	22616	1	Generator, 283PSL1707	
28	22102B	1	Panel, front generator box	
29	19055	1	Seal, generator box	
30	22284B	1	Panel, side generator box	
31	60698	8	Washer, flat .375 uss SS	
32	60717	8	Screw, .375-16X.750 soc hd C.S.	
33	60055	8	Screw, M10-1.25X35 std hex G10.9LB	
A	65691	1	Switch, phase - 63A, 4-pos (Y,y,D,Z)	Option: 4 Pos. Voltage Selector Switch
B	28503B	1	Bracket, phase switch - 4-pos (YyDZ)	Option: 4 Pos. Voltage Selector Switch
-	22865	1	Generator, 284CSL1542	Option: Super Start (not shown)

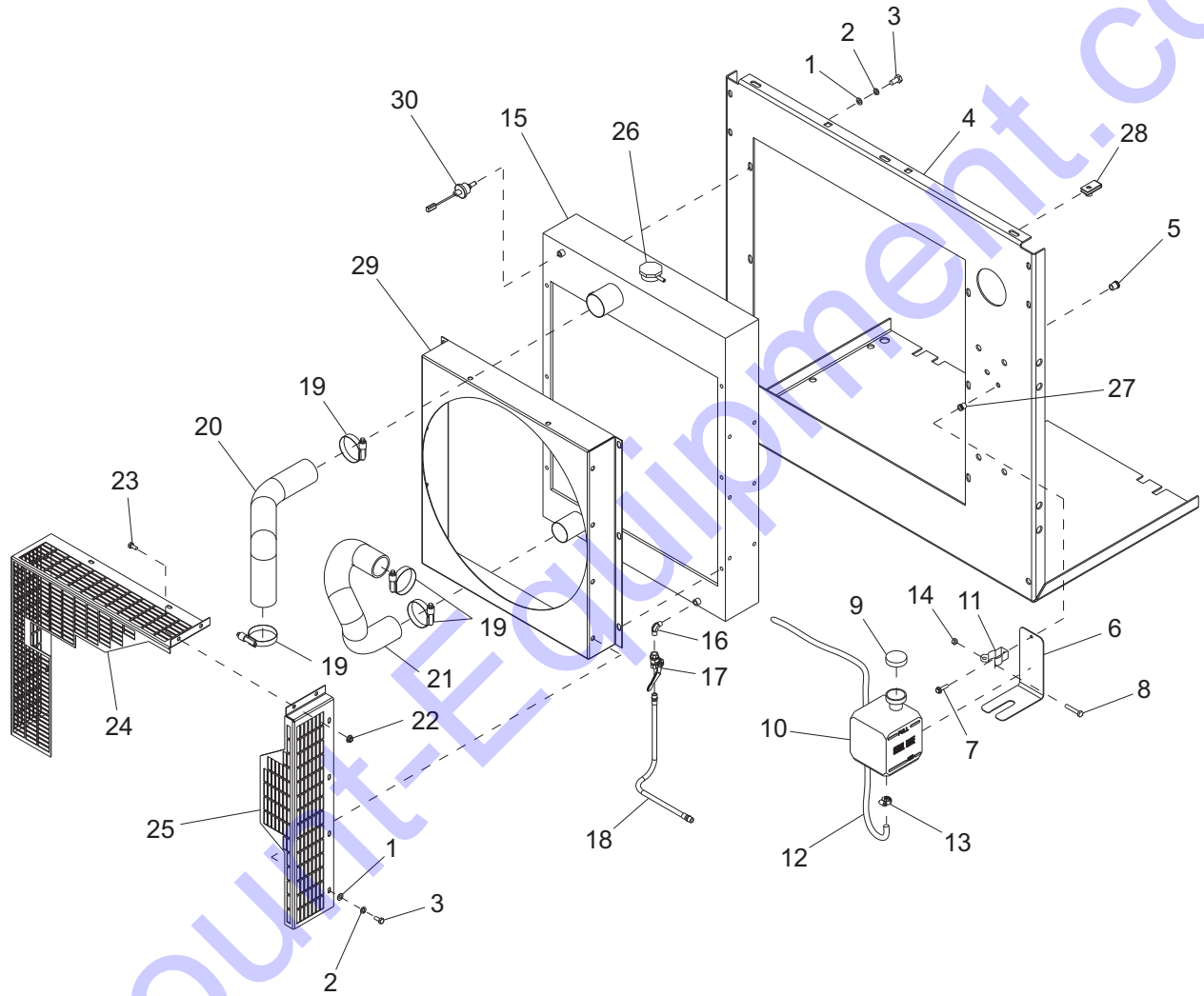
Note: Engine and generator parts used in all Magnum Products LLC equipment carry the Original Equipment Manufacturer (OEM) warranty unless otherwise stated. OEM warranty parts must be purchased through an OEM dealer.

SKID ASSEMBLY



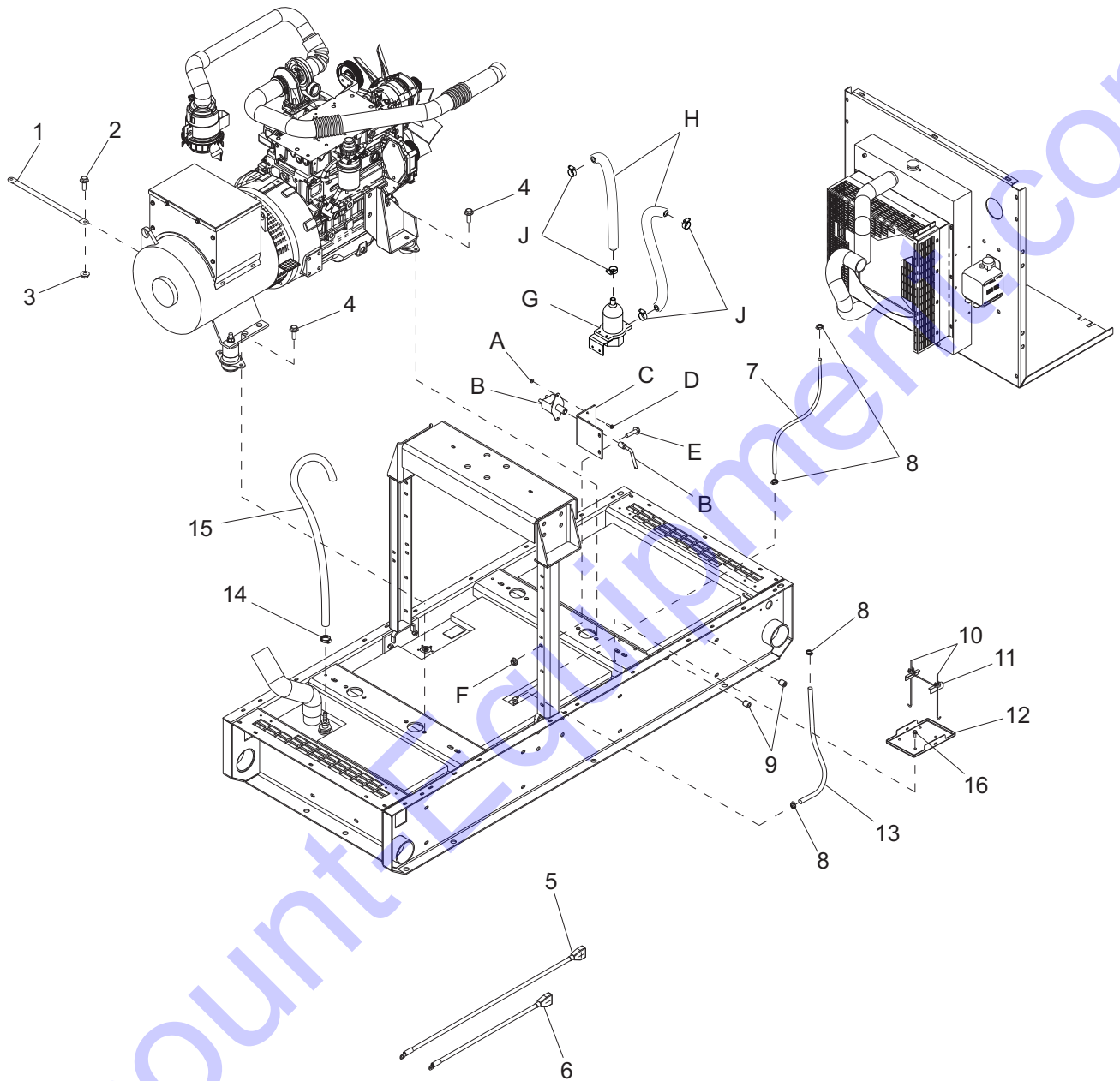
ITEM	PART	QTY	DESCRIPTION	NOTES
1	22925B	1	Weldment, lift channel	
2	61101	18	Screw, .500-13X1.5 std hex G8 lb	
3	61093	14	Nut, .500-13 hex G8	
4	60204	14	Washer, split lock .500	
5	61096	14	Washer, .500 flat 1.375/.110 hard	
6	22945B	1	Weldment, lifting eye bracket	
7	22924B	2	Weldment, lift support	
8	60065	4	Screw, M12X40 hex ser flg	
9	65407	2	Light, clearance marker - amber	
10	60662	4	Rivet, .156 dia X .375 - .500 grip alum	
11	60135	4	Screw, M6 x 1.0 x 20 hex ser flg	
12	22614B	1	Weldment, skid	
13	60022	4	Insert, M8 threaded	
14	65448	1	Light, stop/turn/tail waterproof right	
15	22740B	1	Bracket, rear light right side	
16	65449	1	Light, stop/turn/tail waterproof left	
17	26589B	1	Bracket, rear light left side	
18	18301	1	Hose, fuel fill	
19	60316	2	Clamp, hose SAE 32	
20	22578B	1	Tank, fuel - 74 gal. (35)	
21	18394	2	Plug, .500NPT X hex socket	
A	24486B	1	Tank, fuel (24 HR D.W.)	Option
B	22881B	1	Skid, fork pocket	Option
C	23528B	2	Bracket, interior light	Option
D	11947	2	Light, interior with switch	Option
-	22878B	1	Tank, fuel 94 gal (36 hr run)	Option (Not shown)

COOLING SYSTEM ASSEMBLY



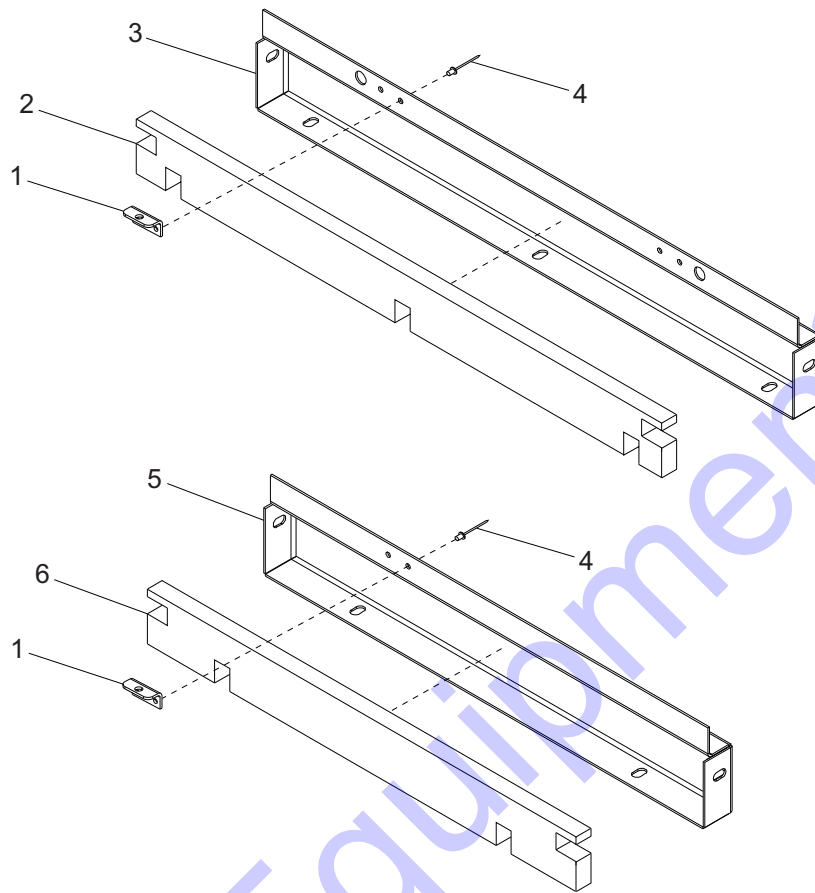
ITEM	PART	QTY	DESCRIPTION	NOTES
1	60119	6	Washer, .312 flat .875/.070	
2	60271	6	Washer, .312 split lock	
3	60168	6	Screw, .312-18X.750 std hex	
4	23129B	1	Panel, bulkhead	
5	60022	12	Insert, M8 threaded	
6	23342B	1	Bracket, overflow jug 3.5 qt.	
7	60135	1	Screw, M6-1.00X20 ser flg hex G8.8	
8	60518	1	Screw, .250-20X1.5 std hex full thread	
9	19714	1	Cap, overflow bottle	
10	23134	1	Jug, overflow 3.5 qt.	
11	19726	1	Clamp, overflow bottle	
12	18301	1	Hose, overflow	
13	19726	1	Clamp, overflow bottle	
14	60144	1	Nut, .250-20 nylock	
15	22626	1	Radiator	
16	23069	1	Fitting, 90-.375MNPT brs	
17	19280	1	Valve, ball 90 - .375 NPT	
18	19168	1	Hose assy, rad drain .375 x 20, 30R7	
19	60660	4	Clamp, hose -CT250 1.75-2.625	
20	22751	1	Hose, radiator upper	
21	23209	1	Hose, radiator lower	
22	60161	2	Nut, .250-20 hex ser flg	
23	60175	2	Screw, .250-20X.500 hex ser flg	
24	22661B	1	Panel, fan guard left	
25	22660B	1	Panel, fan guard right	
26	22376	1	Cap, radiator	
27	60023	1	Insert, M6 threaded	
28	60505	4	Nut, U-Clip - .312-18 long type	
29	22628	1	Shroud, radiator	
30	65592	1	Sensor, low coolant (GEMS)	

ENGINE TO SKID ASSEMBLY



ITEM	PART	QTY	DESCRIPTION	NOTES
1	19042	1	Strap, braided ground - 10"	
2	60018	3	Screw, M10 x 1.25 x 20 hx ser flg	
3	60064	3	Nut, M10 hex ser flg lock	
4	60177	8	Screw, M10-1.50X30 std hx G10.9 ZB	
5	22970	1	Cable, red battery 50"	
6	15073	1	Cable, batt - 4 AWG X 24" blk 7/16" lug	
7	19177	1	Hose, fuel pick-up, .312 ID x 18.00	
8	14216	4	Clamp, hose SAE 04 (.21-.62) mini	
9	18394	2	Fitting, plug-.500NPT X hex	
10	60820	2	Bolt, J - .250-20 X 9.00	
11	14682	1	Bracket, battery hold down	
12	14145	1	Battery tray	
13	50018	3.25 ft.	Hose, fuel - .312 ID 50 PSI SAE 30R7	
14	19338	1	Clamp, hose SAE 16 (.68-1.50)	
15	50019	1	Hose, 1.00 - fuel 20R3 D-2	
16	60353	4	Screw, .375-16X1.000 hex flg	
A	60036	2	Nut, M6 hex ser flg lock	Option: Battery disconnect
B	21489	1	Battery disconnect switch - 500A cont.	Option: Battery disconnect
C	23178B	1	Bracket, battery disconnect	Option: Battery disconnect
D	60135	2	Screw, M6X1.0X20 hex ser flg	Option: Battery disconnect
E	60009	2	Screw, M8X1.25X25 hex ser flg	Option: Battery disconnect
F	60020	2	Nut, M8 hex ser flg lock	Option: Battery disconnect
G	25914	1	Coolant heater 150ci or less 120V 500W	Option: Coolant heater
H	50201	2	Hose, coolant - .625 I.D.	Option: Coolant heater
J	60365	4	Clamp, hose - SAE 010 (.56-1.06)	Option: Coolant heater

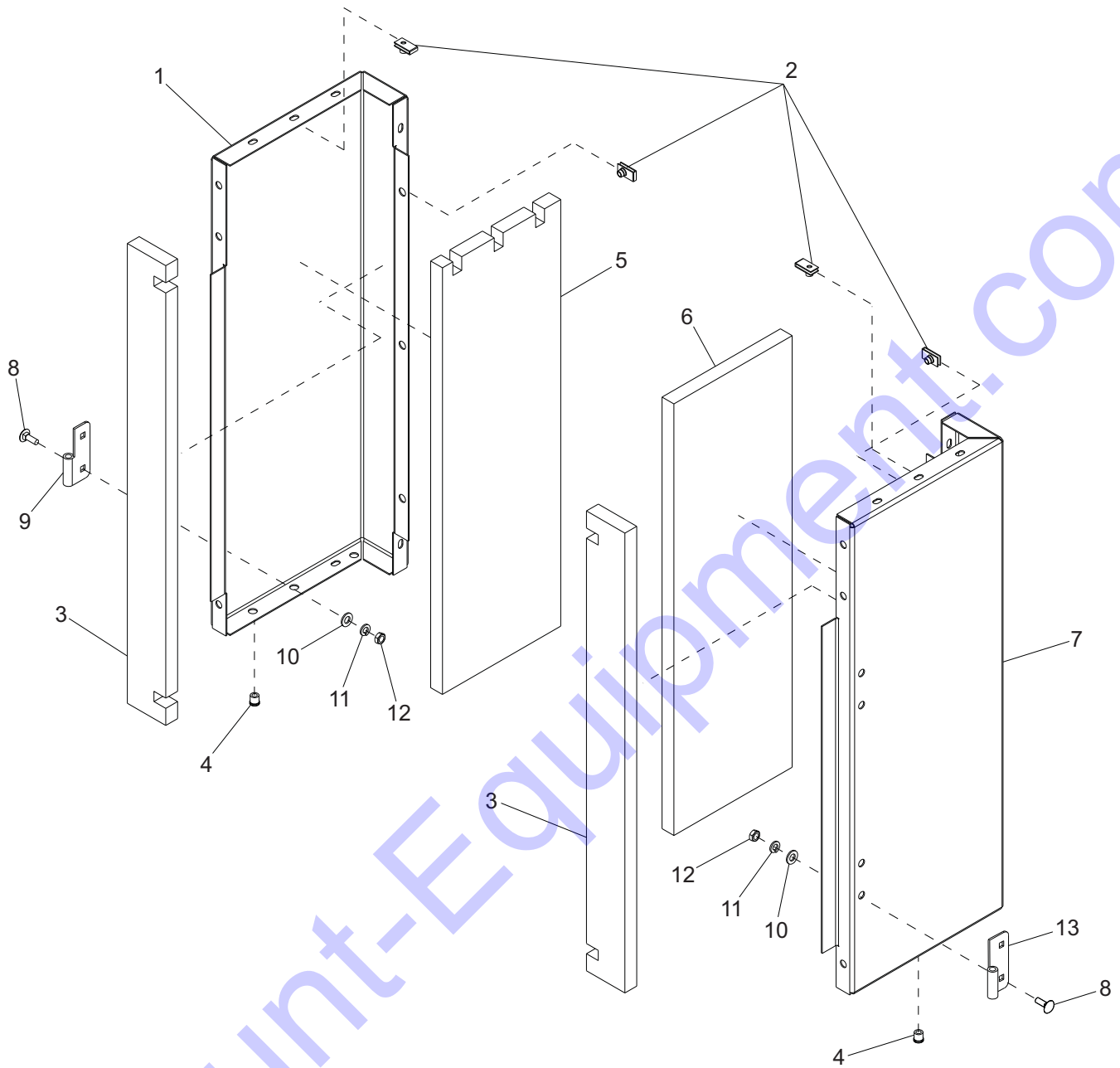
SMALL SIDE & END PANEL ASSEMBLIES



ITEM	PART	QTY	DESCRIPTION	NOTES
1	20916Z	3	Bracket, prop rod	
2	20930	6	Foam, small panel	
3	20888W	6	Panel, small (ALU)	
4	60268	6	Rivet, .188 dia x .126 to .250 grip	
5	20898W	1	Panel, small (left rear) (ALU)	
6	20931	1	Foam, small panel	

Note: See pages 4 and 5 for orientation of enclosure parts.

FRONT CORNER ASSEMBLY

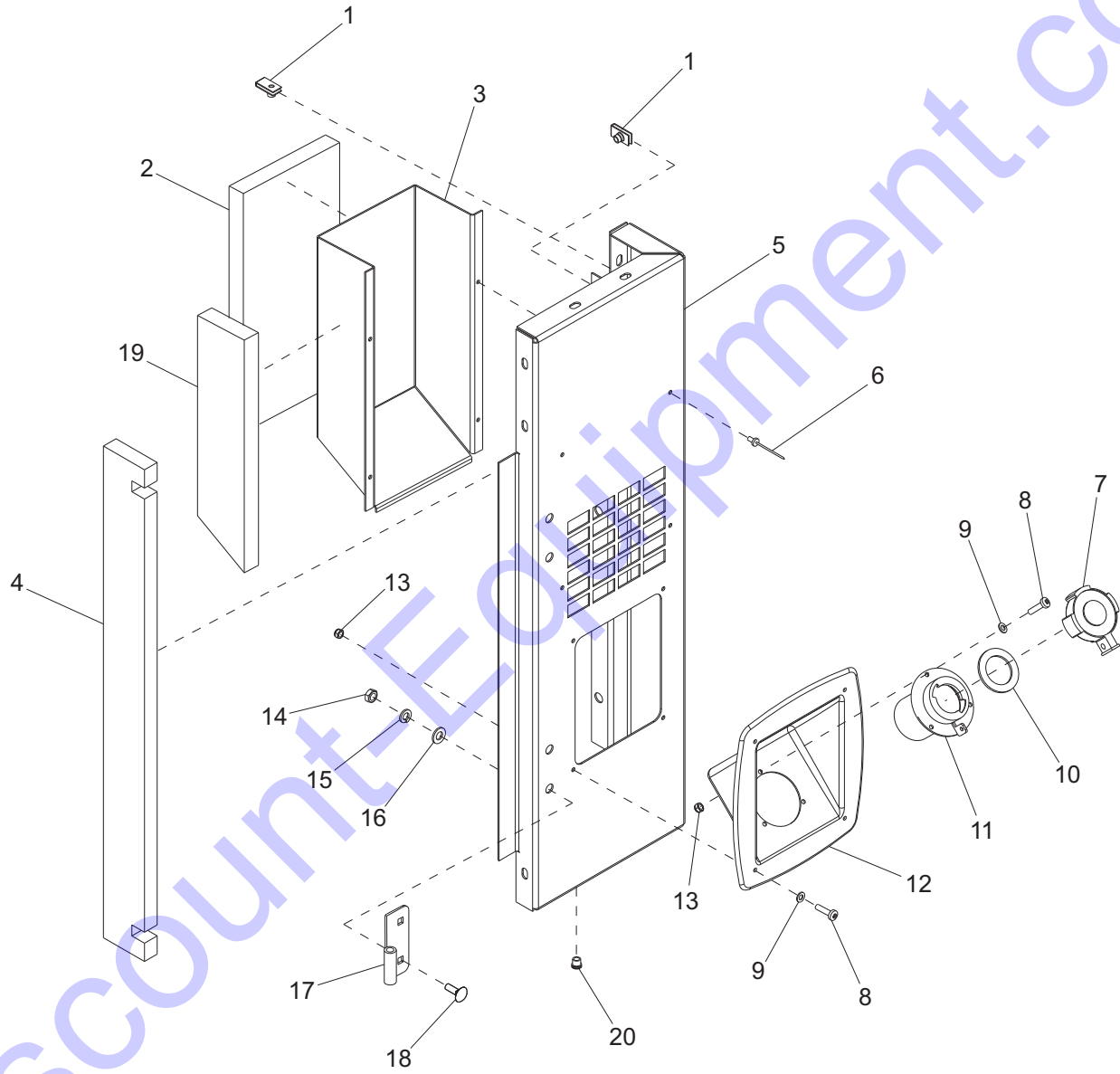


ITEM	PART	QTY	DESCRIPTION
1	22782W	1	Panel, left front corner
2	60505	12	Nut, U-clip .312-18 long type
3	20932	2	Foam, corner common
4	60022	8	Insert, M8 threaded
5	22827	1	Foam, left front corner
6	22832	1	Insulation, front right
7	22781W	1	Panel, right front corner
8	61066	8	Screw, .312-18X1.0 carr sqr 316 SS
9	18462	2	Hinge, left (female)
10	60243	8	Washer, .250 flat .735/.060
11	60271	8	Washer, .312 split lock
12	60285	8	Nut, .312-18 hex
13	18460	2	Hinge, right (female)

NOTES

Note: See pages 4 and 5 for orientation of enclosure parts.

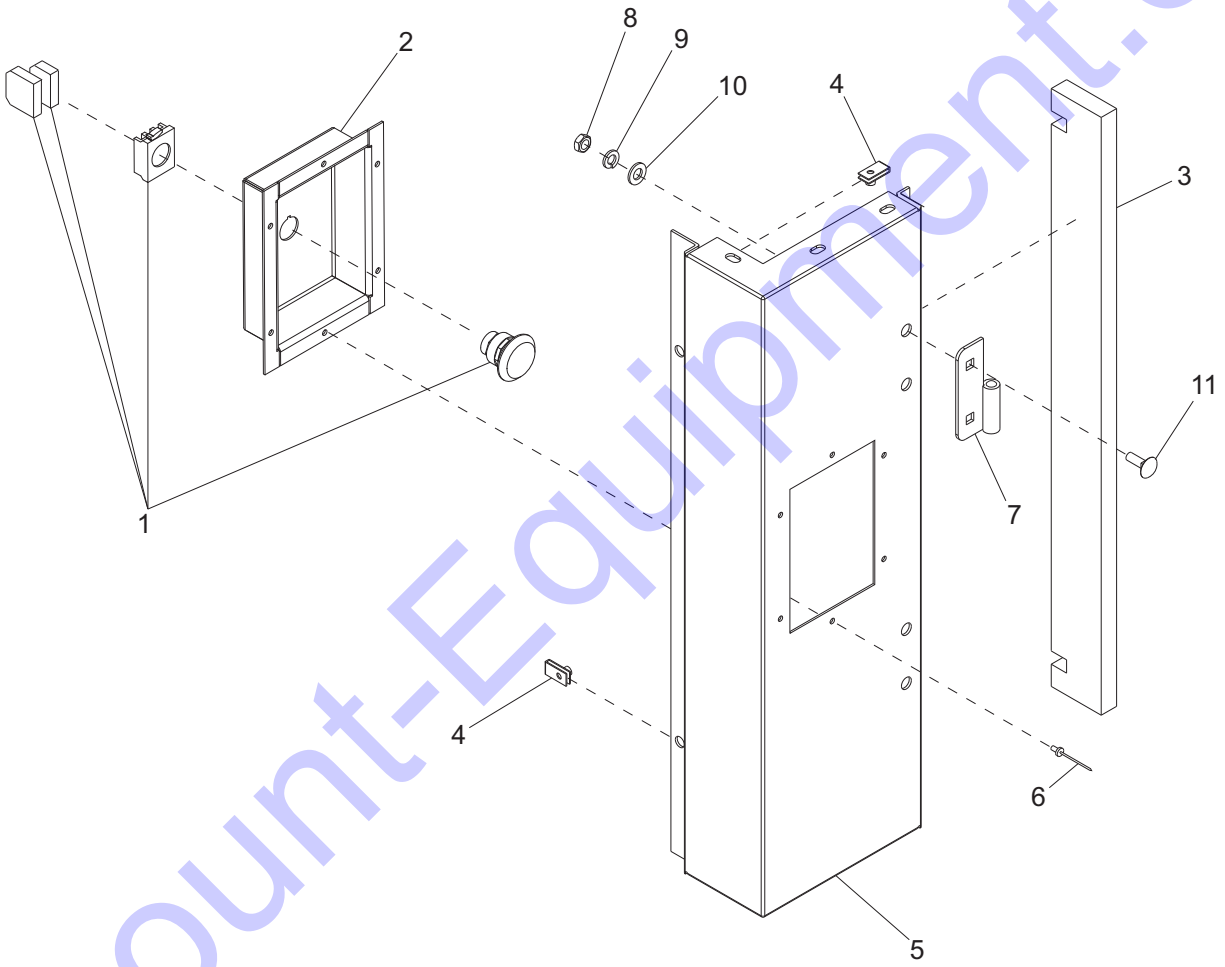
LEFT REAR CORNER ASSEMBLY



ITEM	PART	QTY	DESCRIPTION	NOTES
1	60505	5	Nut, U-clip .312-18 long type	
2	20798	1	Foam, small duct	
3	20677W	1	Duct, rear air	
4	20932	1	Foam, corner common	
5	20857W	1	Panel, left rear side - sml (ALU)	
6	60268	4	Rivet, .188 dia SS	
7	18648	1	Cap, fuel fill w/gasket	
8	60850	7	Screw, 10-24X.75 pan phil	
9	60067	7	Washer, flat #10X.06thk SS	
10	19238	1	Gasket, fuel fill	
11	18666B	1	Weldment, filler tube & flange	
12	18506	1	Port, fuel fill	
13	60457	7	Nut, 10-24 nylock	
14	60285	4	Nut, .312-18 hex	
15	60271	4	Washer, .312 split lock	
16	60243	4	Washer, .250 flat .735/.060	
17	18460	2	Hinge, right (female)	
18	61066	4	Screw, .312-18X1.0 carr sqr 316 SS	
19	20804	1	Foam, small duct side	
20	60022	2	Insert, M8 threaded	

Note: See pages 4 and 5 for orientation of enclosure parts.

RIGHT REAR CORNER ASSEMBLY

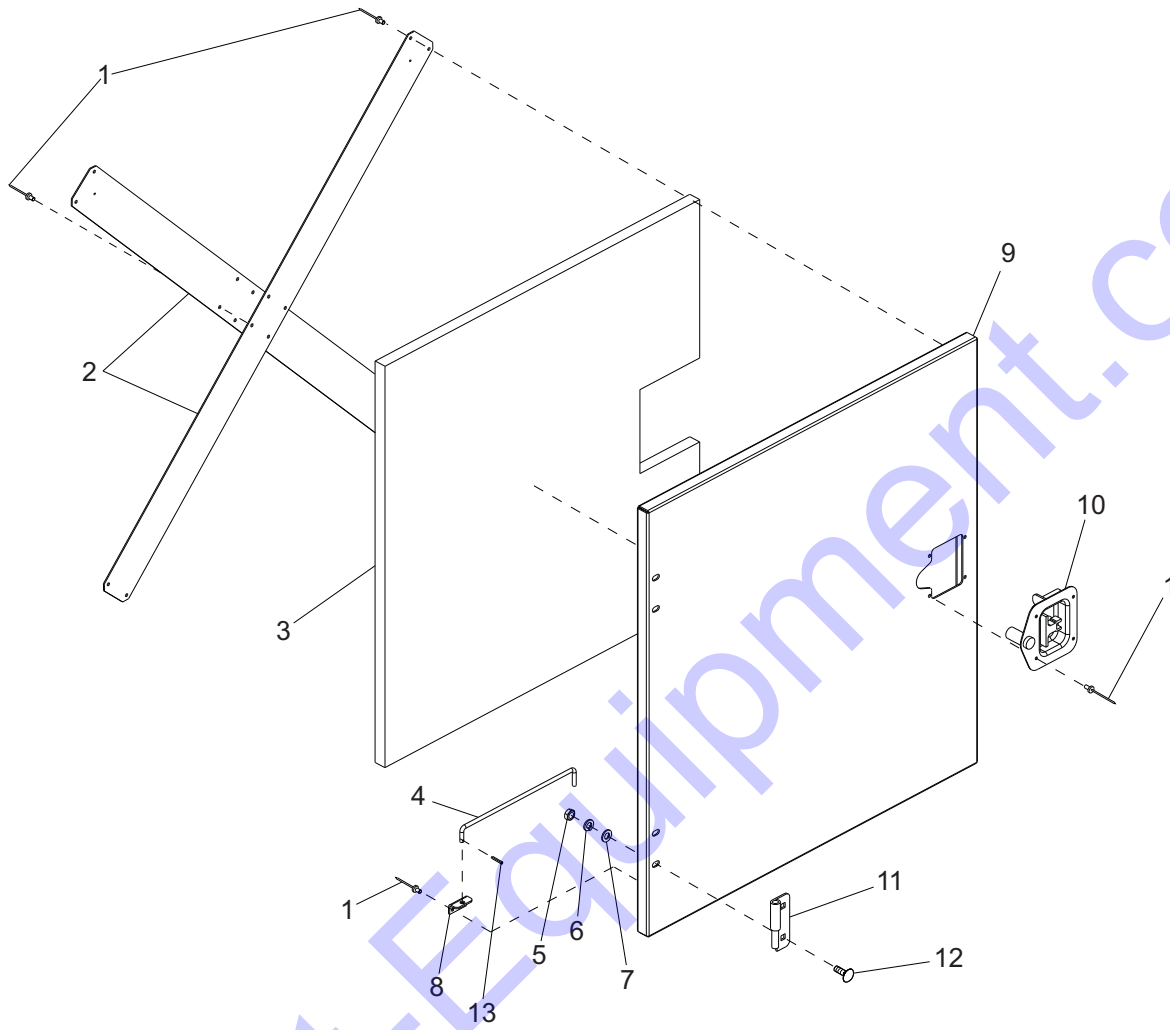


ITEM	PART	QTY	DESCRIPTION	NOTES
1	22550	1	Switch, emergency stop 2NO/1NC	
2	22816W	1	Panel, emergency stop	
3	20932	1	Foam, corner common	
4	60505	5	Nut, u-clip .312-18 long type	
5	20856W	1	Panel, right rear side - sm (ALU)	
6	60268	6	Rivet, .188 SS	
7	18462	2	Hinge, left (female)	
8	60285	4	Nut, .312-18 hex G5	
9	60271	4	Washer, .312 split lock	
10	60243	4	Washer, .250 flat .735/.060	
11	61066	4	Screw, .312-18X1.0 carr sqr 316 SS	

Note: See pages 4 and 5 for orientation of enclosure parts.

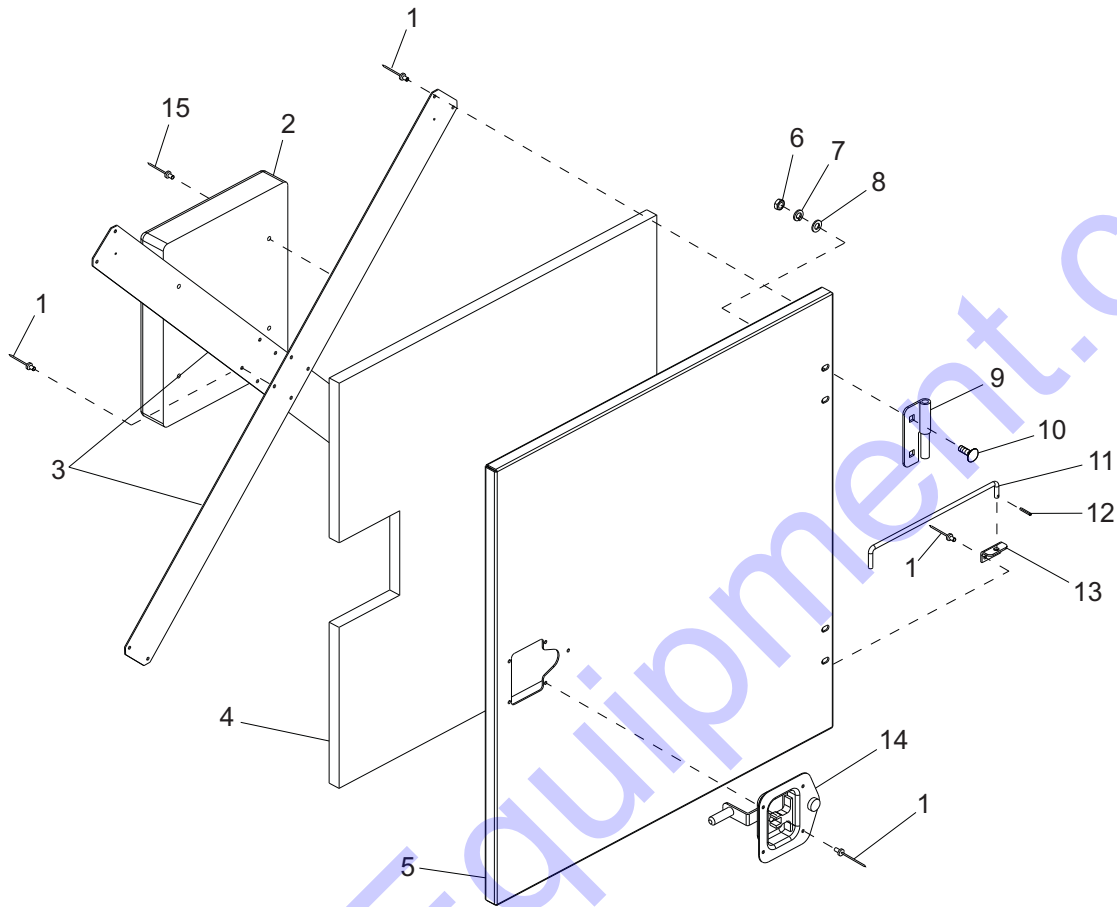
Discount-Equipment.com

LEFT FRONT DOOR ASSEMBLY



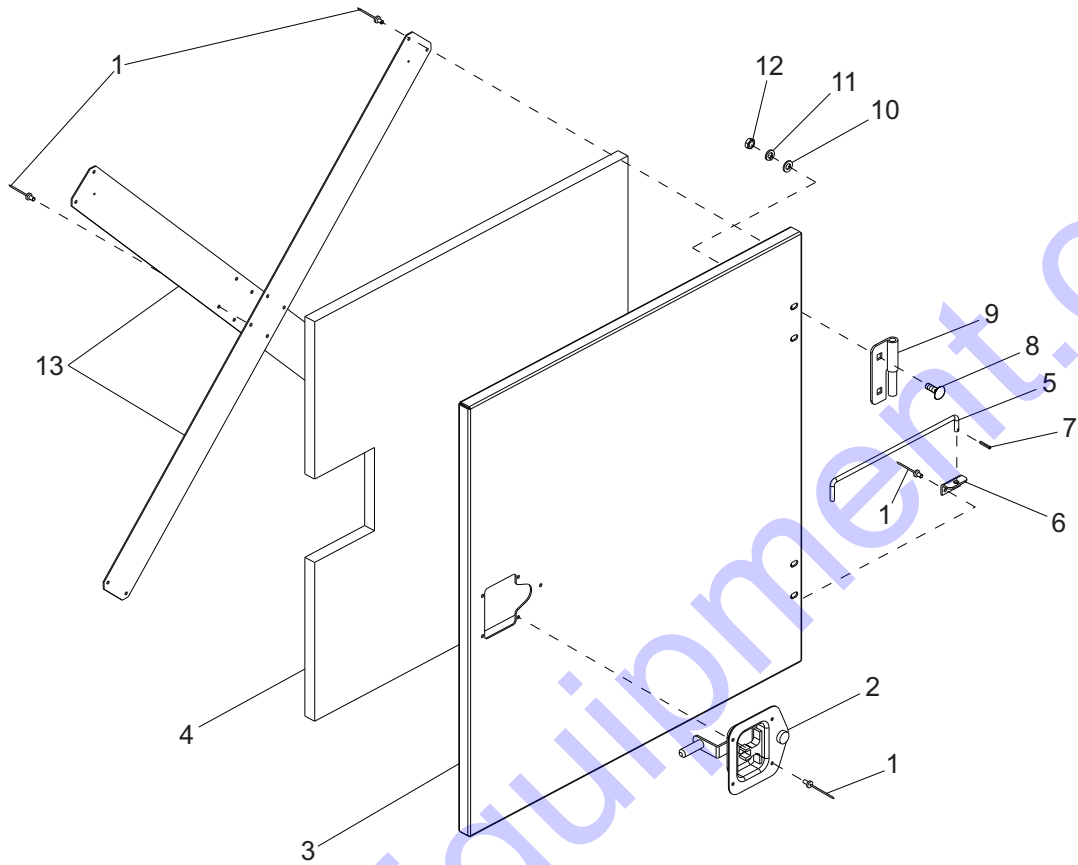
ITEM	PART	QTY	DESCRIPTION	NOTES
1	60268	18	Rivet, .188 dia SS	
2	20952B	2	Brace, door small	
3	20969	1	Foam, door front small	
4	18900ZC	1	Rod, door prop	
5	60285	4	Nut, .312-18 hex	
6	60271	4	Washer, .312 split lock	
7	60243	4	Washer, .250 flat .735/.060	
8	20916Z	1	Bracket, prop rod	
9	20907W	1	Panel, front - small	
10	22497	1	Latch, T-handle - lft cw lock	
11	18459	2	Hinge, left (male)	
12	61066	4	Screw, .312-18X1.0 carr sqr 316 SS	
13	60048	1	Roll pin, .125 x .625	

RIGHT FRONT DOOR ASSEMBLY



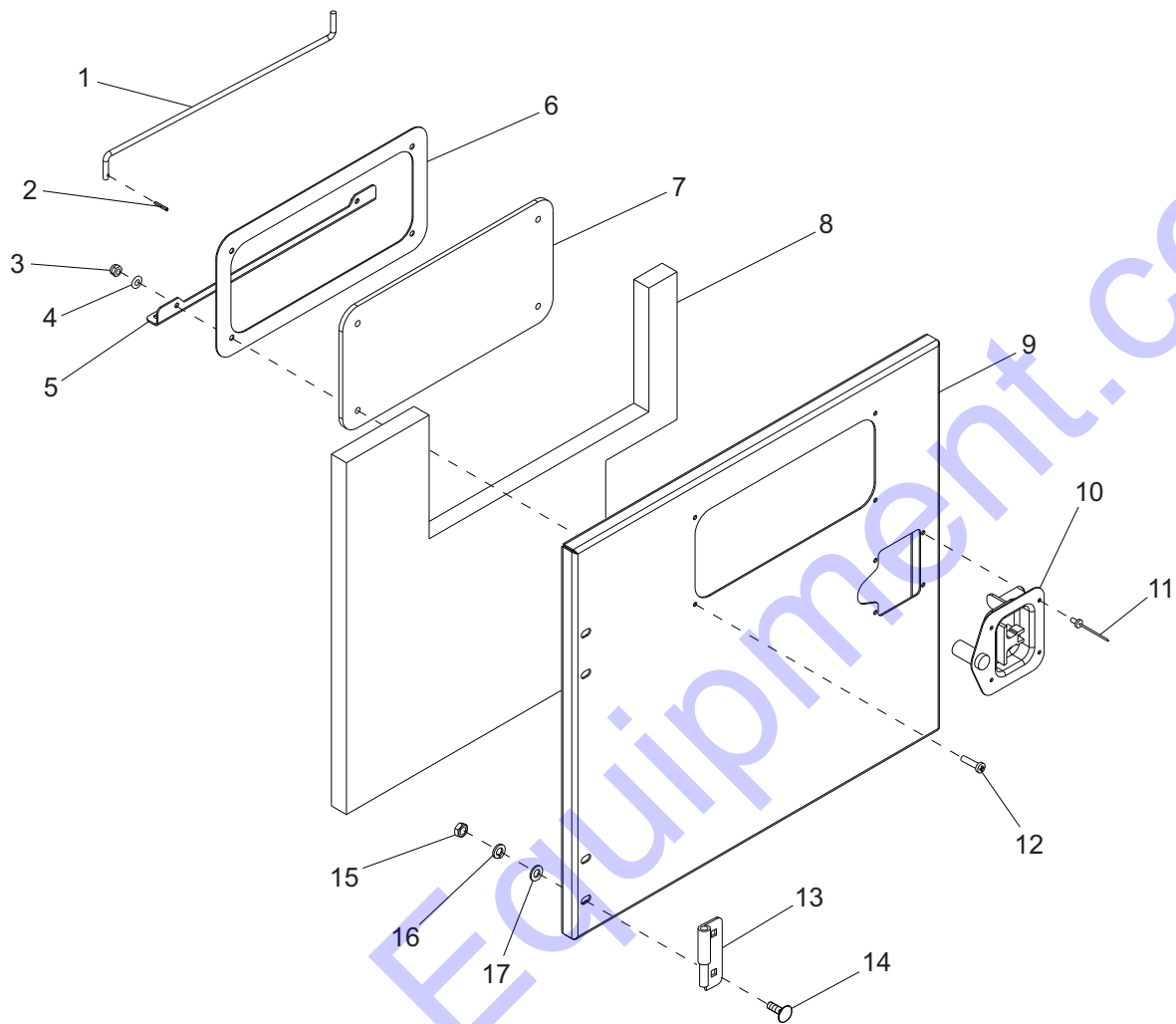
ITEM	PART	QTY	DESCRIPTION	NOTES
1	60268	18	Rivet, .188 dia x .126 x .250 SS	
2	18715	1	Holder, manual (plastic)	
3	20952B	2	Brace, door small	
4	20969	1	Foam, door front - small	
5	21033W	1	Panel, door front rht	
6	60285	4	Nut, .312-18 hex	
7	60271	4	Washer, .312 split lock	
8	60243	4	Washer, .250 flat .735/.060	
9	18461	2	Hinge, right (male)	
10	61066	4	Screw, .312-18X1.0 carr sqr 316 SS	
11	18900ZC	1	Rod, door prop	
12	60048	1	Roll pin, .125 x .625	
13	20916Z	1	Bracket, prop rod	
14	22498	1	Latch, T-handle - rht ccw lock	
15	60231	4	Rivet, .188 dia X .375 to .500 grip	

LEFT REAR DOOR ASSEMBLY



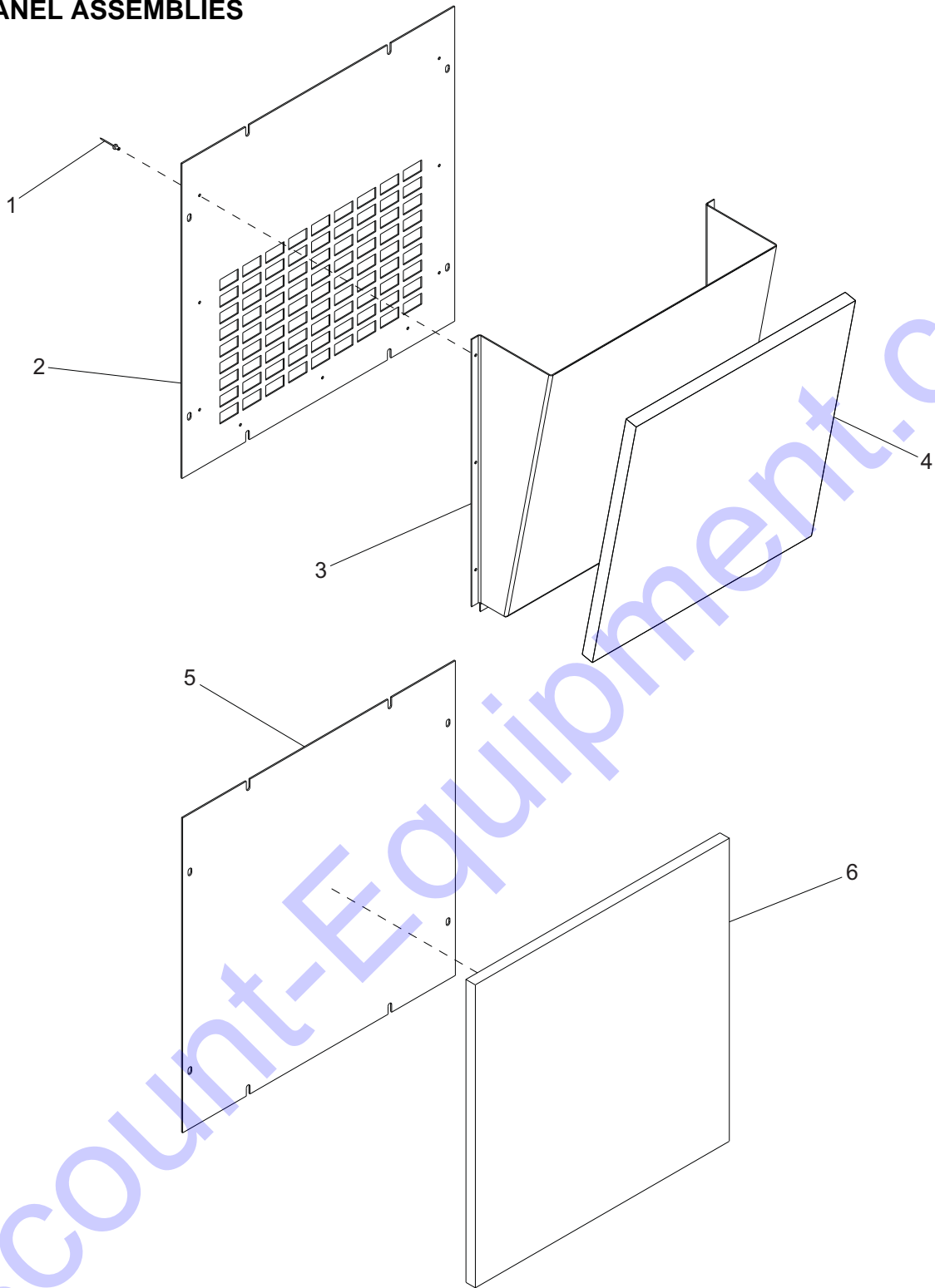
ITEM	PART	QTY	DESCRIPTION	NOTES
1	60268	18	Rivet, .188 dia X .126 to X .250 grip	
2	22498	1	Latch, T-handle - rht ccw lock	
3	20908W	1	Door, rear - small	
4	20970	1	Foam, door rear - small	
5	18900ZC	1	Rod, door prop	
6	20916Z	1	Bracket, prop rod	
7	60048	1	Roll pin, .125 x .625	
8	61066	4	Screw, .312-18X1.0 carr sqr 316 SS	
9	18461	2	Hinge, right (male)	
10	60243	4	Washer, .250 flat .735/.060	
11	60271	4	Washer, .312 split lock	
12	60285	4	Nut, .312-18 hex G5	
13	20953B	2	Brace, door - small	

RIGHT REAR DOOR ASSEMBLY



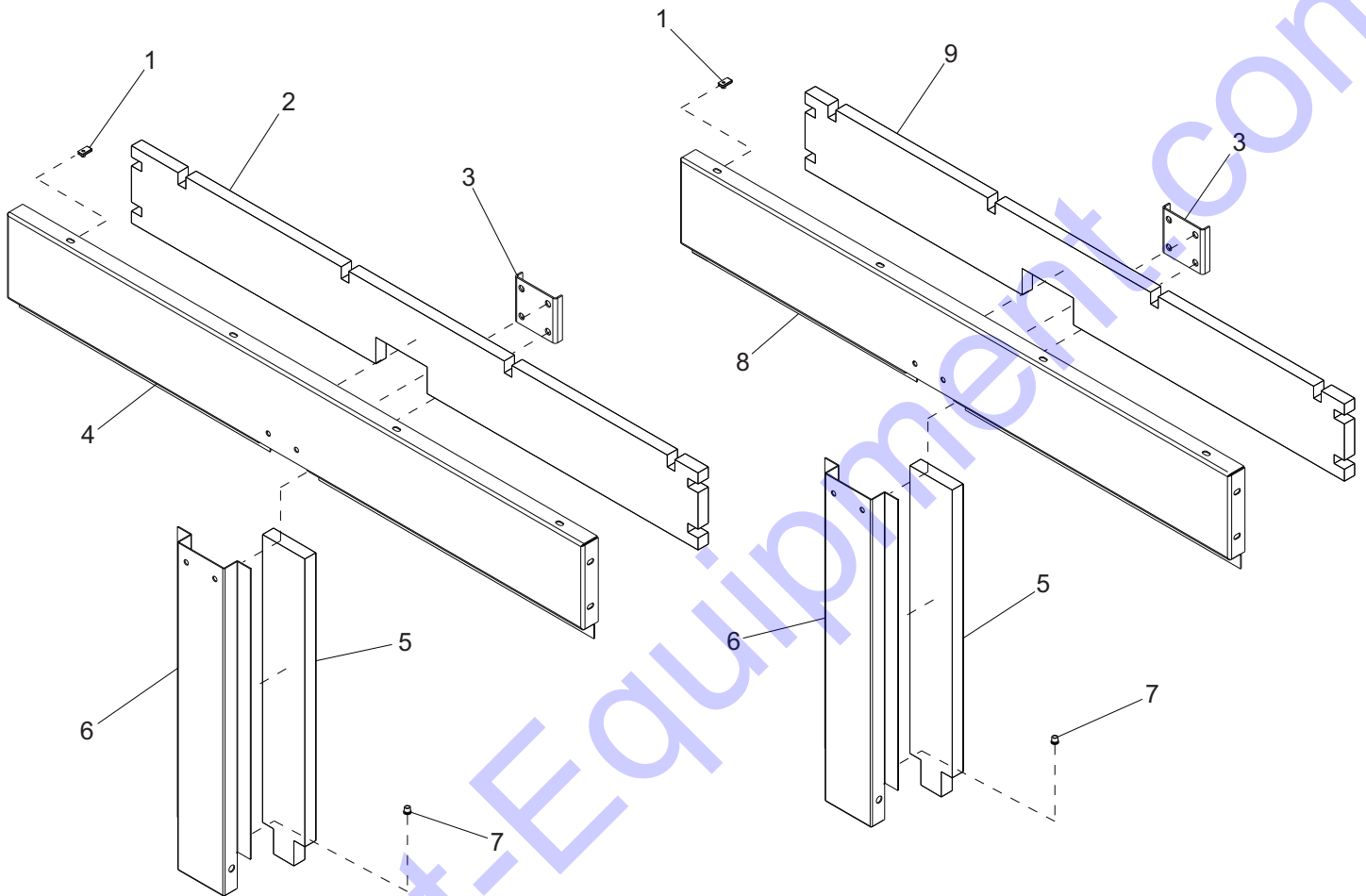
ITEM	PART	QTY	DESCRIPTION	NOTES
1	21370Z	1	Rod, door prop	
2	60048	1	Roll pin, .125 x .625	
3	60457	4	Nut, 10-24 nylock G5	
4	60237	4	Washer, #10 flat .495/.036 SAE	
5	21369W	1	Bracket, door prop	
6	23511	1	Gasket, control door	
7	23512	1	Window, control door	
8	20971	1	Foam, door control - small	
9	20909W	1	Door, control small	
10	22497	1	Latch, T-handle - lft cw lock	
11	60268	4	Rivet, .188 dia X .126 to X .250 grip	
12	60850	4	Screw, 10-24X.750pan phil G2	
13	18459	2	Hinge, left (male)	
14	61066	4	Screw, .312-18X1.0 carr sqr 316 SS	
15	60285	4	Nut, .312-18 hex	
16	60271	4	Washer, .312 split lock	
17	60243	4	Washer, .250 flat .735/.060	

END PANEL ASSEMBLIES



ITEM	PART	QTY	DESCRIPTION	NOTES
1	60268	9	Rivet, .188 dia x .126to x .250 grip	
2	20877W	1	Panel , rear	
3	22730W	1	Duct, rear	
4	20933	1	Foam, rear duct	
5	20875W	1	Panel, front	
6	20936	1	Foam, front panel	

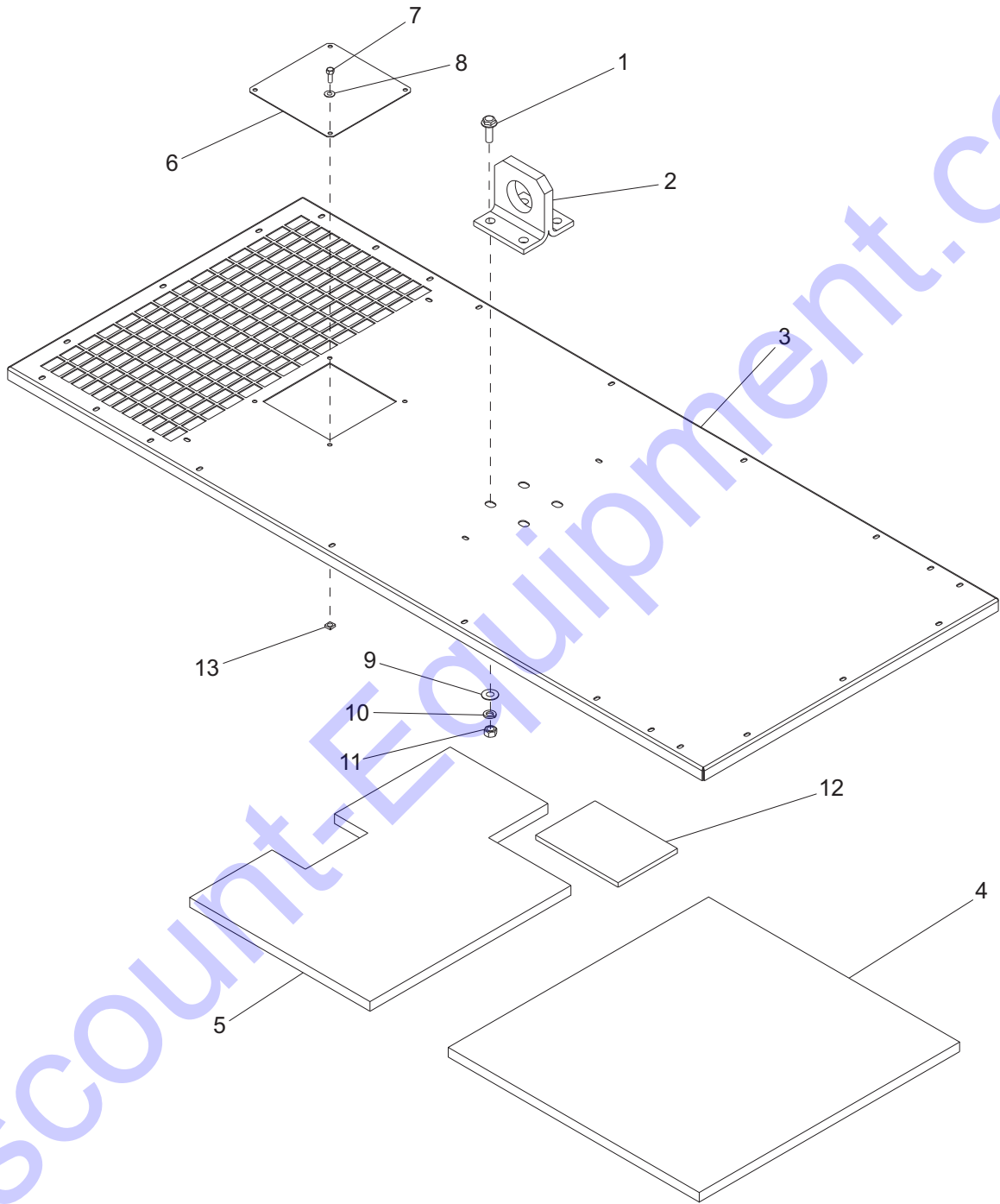
SIDE PANEL ASSEMBLIES



ITEM	PART	QTY	DESCRIPTION	NOTES
1	60505	8	Nut, U-clip .312-18 long type	
2	20926	1	Foam, top side left	
3	20906W	2	Bracket, side stiffener	
4	20891W	1	Panel, top side left	
5	20929	2	Foam, center side	
6	20896W	2	Panel, center side	
7	60022	4	Insert, M8 threaded	
8	20890W	1	Panel, top side right	
9	20925	1	Foam, top side right	

Note: See pages 4 and 5 for orientation of enclosure parts.

ROOF ASSEMBLY



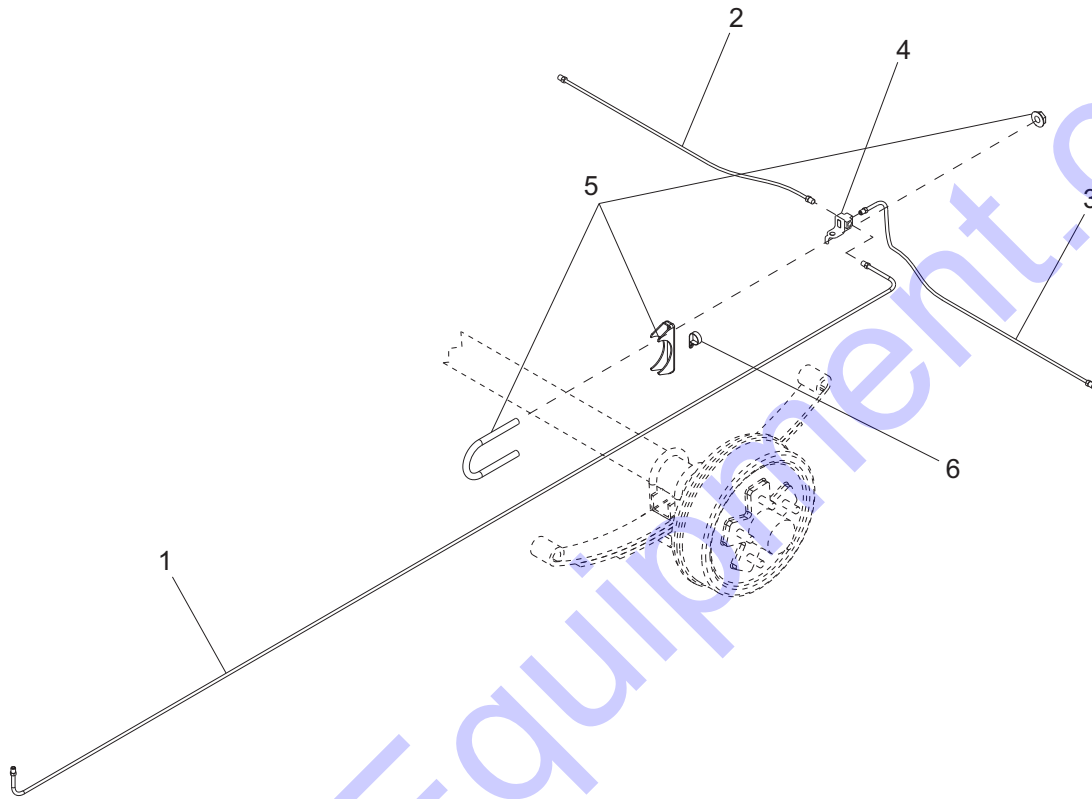
ITEM	PART	QTY	DESCRIPTION	NOTES
1	60532	4	Screw, .750-10X3.000 std hex G8	
2	22936B	1	Bracket, lifting eye	
3	23096W	1	Panel , roof	
4	22829	1	Foam, rear roof	
5	22833	1	Foam, front roof	
6	25053W	1	Panel, back access	
7	60507	4	Screw, .312-18X1.0 std hex 316 SS	
8	60452	4	Washer, flat .313 x 1.125 SS	
9	60527	4	Washer, .750 flat 1.500/.125 hardened	
10	60248	4	Washer, .750 split lock	
11	60249	4	Nut, .750-10 hex G8 lb	
12	23361	1	Insulation, ceramic roof	
13	15425	2	Nut, .312-18 cage	

Discount-Equipment.com

ITEM	PART	QTY	DESCRIPTION	NOTES
1	60140	8	Nut, .375-16 hex hd	
2	60386	16	Washer, flat .375	
3	22743B	2	Fender, single wheel	
4	60179	8	Screw .375-16X.750 hex hd	
5	60504	6	Nut, .562-18 hex shackle lock	
6	19637	4	Plate, shackle bracket	
7	24811B	1	Weldment, trailer chassis	
8	60503	6	Screw, .562-18 hex shackle	
9	24691B	1	Brace, tongue shipping	
10	60383	6	Screw, .750-10X1.500 hex hd	
11	60247	6	Washer, flat .750	
12	60248	6	Washer, split lock .750	
13	15293	6	Nut, .750-10 hex	
14	22340	2	Bushing, 1.00 OD X .75 ID	
15	60309	14	Washer, flat .500	
16	60307	7	Nut, .500-13 hex nylock	
17	61010	7	Clamp, tubing - .375 heavy duty	
18	23205	1	Harness, trailer	
19	60659	7	Screw, .500-13X5.000 hex hd	
20	23367	2	Chain, safety - 7,800 lbs rated	
21	24812B	1	Weldment, flip tongue	Non-adjustable
22	23256	1	Pin, jack - 2000lb tube mounted	
23	23254	1	Jack, 3000lb top wind - tube mtd.	
24	15103	1	Coupler, 2.00 ball/3.00 channel	Non-adjustable
25	11254	2	Plug, grease cap - for zerk	
26	11253	2	Cap, grease - with rubber plug 3500lb	
27	40956	2	Outer bearing	
28	11276	2	Hub w/races 3500lb	
29	18358	1	Single (3500lb), no brakes	
30	40954	2	Inner bearing	
31	12307	2	Bearing seal DL350	
32	60674	10	Stud, wheel - .500-20 GR8	
33	11277	4	U-bolt 3500lb	
34	11280	2	Leaf spring 3500lb	
35	15540	2	Wheel, ST205/75R15, 1820#-6 PR	
36	60096	10	Nut, .500-20 wheel lug	
37	26441	8	1/2-20 Clear-zinc plated U-bolt nut	
38	11278	2	Tie-plate 3500lb	
A	19379B	1	Weldment, hitch 4 pos.	Option: adjustable hitch, elec
B	24304	1	Actuator, hyd surge - 2" ball, 6000 lb	Option: non-adjustable
C	11032	1	Weldment, lun. ring - 3.0ID/3.0 tongue	Option: non-adjustable
D	12235B	1	Weldment, spare tire holder	Option
E	19417	1	Breakaway Kit	Option
F	19518	1	Coupler, 2.00 ball	Option: adjustable
G	19519	1	Coupler, 2.31 ball	Option: adjustable
H	19335B	1	Hitch, pintle eye - 3.00 ID	Option: adjustable
J	60239	2	Screw, .625-11x5.000 hex hd	Option: adjustable
K	60180	4	Washer, flat .625	Option: adjustable
L	60240	2	Nut, .625-11 hex nylock	Option: adjustable
M	40529	1	Actuator, hyd surge brake 7500lb	Option: adjustable actuator, hyd
N	24824B	1	Weldment, flip tongue	Option: for adj. actuator/hitch
O	12311	2	Brake drum - 10" 5 on 4.5"	Option
P	40765	2	10" surge free-backing brake assy RH	Option
	40764	2	10" surge free-backing brake assy LH	Option
	26443	2	10" electric brake assembly kit, RH	Option
	26442	2	10" electric brake assembly kit, LH	Option
Q	19421	1	Axle, 3500lb hydraulic	Option
	19422	1	Axle, 3500lb electric	Option

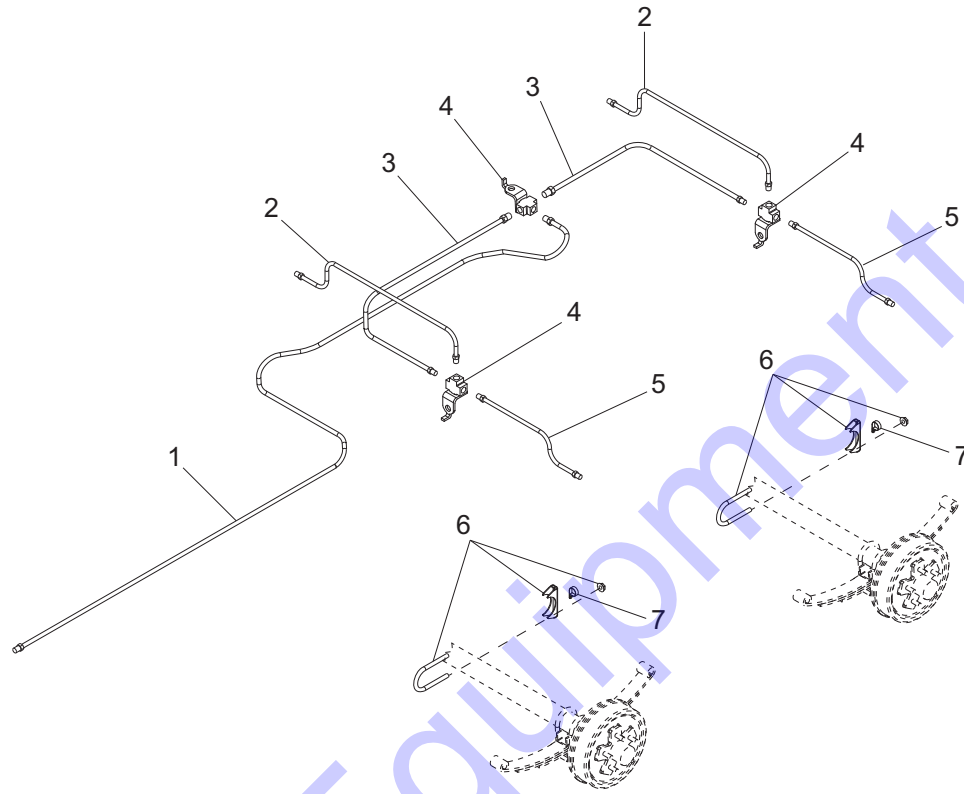
ITEM	PART	QTY	DESCRIPTION	NOTES
1	22976B	2	Weldment, fender tandem	
2	60140	10	Nut, .375-16 hx hd	
3	60386	20	Washer, flat .375	
4	60179	10	Screw, .375-16X.750 hx hd	
5	24789B	1	Weldment, trailer	
6	60503	14	Screw, .562-18 hx shackle	
7	60504	14	Nut, .562-18 hx shackle lock	
8	19637	8	Plate, shackle bracket	
9	40545	2	Equalizer, tandem axle	
10	60383	6	Screw, .750-10X1.500 hx hd	
11	60247	12	Washer, flat .750	
12	60248	6	Washer, split lock .750	
13	15293	6	Nut, .750-10 hx	
14	60307	5	Nut, .500-13 hx nylock	
15	60416	4	Washer, flat .500	
16	23205	1	Harness, trailer	
17	16143	5	Clamp, tubing - .500	
18	23367	2	Chain, safety	
19	60659	7	Screw, hx hd	
20	40529	1	Actuator, hyd surge brake	Adjustable
21	22340	4	Bushing, 1.00 OD X .75 ID	
22	23256	1	Pin, jack - 2000lb tube mtd	
23	23254	1	Jack, top wind - 2000 lb. tube mtd	
24	24691B	1	Brace, tongue shipping	
25	24824B	1	Weldment, flip tongue	For adjustable actuator/hitch
26	11254	4	Plug, grease cap - for zerk	
27	11253	4	Cap, grease	
28	40956	4	Outer bearing	
29	12311	4	Brake drum - 10" 5 on 4.5"	
30	40765	4	10" Surge brake assy RH	
	40764	4	10" Surge brake assy LH	
	26443	4	10" Electric brake assy rht	Option
	26442	4	10" Electric brake assy lft	Option
31	40954	4	Inner bearing	
32	12307	4	Bearing seal DL350	
33	60674	20	Stud, wheel - .500-20 GR8	
34	11277	8	U-bolt 3500lb	
35	11280	4	Leaf spring 3500lb	
36	19421	2	Axle, 3500lb hydraulic	
	19422	2	Axle, 3500lb electric	Option
37	15540	4	Wheel, ST205/75R15, 1820#-6 PR	
38	60096	20	Nut, .500-20 wheel lug	
39	26441	16	1/2-20 U-bolt nut	
40	11278	4	Tie plate, 3500 lb	
41	19335B	1	Coupler, lunette ring - 3" ID	For adjustable actuator/hitch
42	60239	2	Screw, hx hd	
43	60180	4	Washer, flat .625	
44	60240	2	Nut, .625-11 hx nylock	
A	24812B	1	Weldment, flip tongue	Option: non-adj actuator/hitch
B	19379B	1	Weldment, hitch 4 pos.	Option: adjustable hitch, elec
C	24304	1	Actuator, hyd surge brake	Option: 2" ball
D	19417	1	Breakaway Kit	Option
E	12235B	1	Weldment, spare tire holder	Option
F	19519	1	Coupler, 2.31 ball	Option: adjustable
G	19518	1	Coupler, 2.00 ball	Option: adjustable

BRAKE LINES - SINGLE AXLE



ITEM	PART	QTY	DESCRIPTION	NOTES
1	24688	1	Hose, brake - .188 X 136 male/male	
2	40495	1	Line, brake - .188 x 20.00	
3	40494	1	Line, brake - .188 X 30.00	
4	19252	1	Fitting, .188 - T w/bracket, all female	
5	61028	1	Clamp, 2.50 lt duty (U-bolt & saddle)	
6	61010	1	Clamp, .375 heavy duty .375 bolt	

BRAKE LINES - TANDEM AXLE



ITEM	PART	QTY	DESCRIPTION	NOTES
1	24688	1	Hose, brake - .188 X 136.00 male/male	
2	40494	2	Line, brake - .188 X 30.00	
3	40817	2	Hose, brake - .188 X 33.00 male/male	
4	19252	3	Fitting, .188 - T w/bracket all female	
5	40495	2	Line, brake - .188 x 20.00	
6	61028	2	Clamp, 2.50 lt duty (U-bolt & saddle)	
7	61010	2	Clamp, .375 heavy duty .375 bolt	

Discount Equipment

Discount-Equipment.com is your online resource for commercial and industrial quality parts and equipment sales.

Locations:

Florida (West Palm Beach): [561-964-4949](tel:561-964-4949)

Outside Florida TOLL FREE: [877-690-3101](tel:877-690-3101)

Need parts? Check out our website at www.discount-equipment.com

Can't find what you need?

Click on this link: <http://www.discount-equipment.com/category/5443-parts/> and fill out the request form.

Please have the machine model and serial number available in order to help us get you the correct parts. One of our experienced staff members will get back to you with a quote for the right part that your machine needs.

We sell worldwide for the brands: Genie, Terex, JLG, MultiQuip, Mayco, Toro/Stone, Diamond Products, Magnum, Airman, Mustang, Power Blanket, Nifty Lift, Atlas Copco, Chicago Pneumatic, Allmand Brothers, Essick, Miller Spreader, Skyjack, Lull, Skytrak, Tsurumi, Husquvarna/Target, Whiteman-Concrete/Mortar, Stow-Concrete/Mortar, Baldor, Wacker, Sakai, Snorkel, Upright, Mi-T-M, Sullair, Neal, Basic, Dynapac, MBW, Weber, Bartell, Bennar Newman, Haulotte, Ditch Runner, Blaw-Knox, Himoina, Best, Buddy, Crown, Edco, Wyco, Bomag, Laymor, Terremite, Barreto, EZ Trench, Takeuchi, Basic, Bil-Jax, Curtis, Gehl, Heli, Honda, ICS/PowerGrit, Puckett, Waldon, ASV, IHI, Partner, Imer, Clipper, MMD, Koshin, Rice, Gorman Rupp, CH&E, Cat Pumps, Comet, General Pump, Giant, AMida, Coleman, NAC, Gradall, Square Shooter, Kent, Stanley, Tamco, Toku, Hatz, Kohler, Robin, Wisconsin, Northrock, Oztec, Toker TK, Rol-Air, Small Line, Wanco, Yanmar

New Equipment - Used Equipment - Rental Equipment - Parts and Accessories

Discount Equipment

www.discount-equipment.com

561-964-4949

Parts: wbparts@Discount-Equipment.com

Sales: info@Discount-Equipment.com



www.discount-equipment.com

REV: M
PART NO: 22855
12.28.09