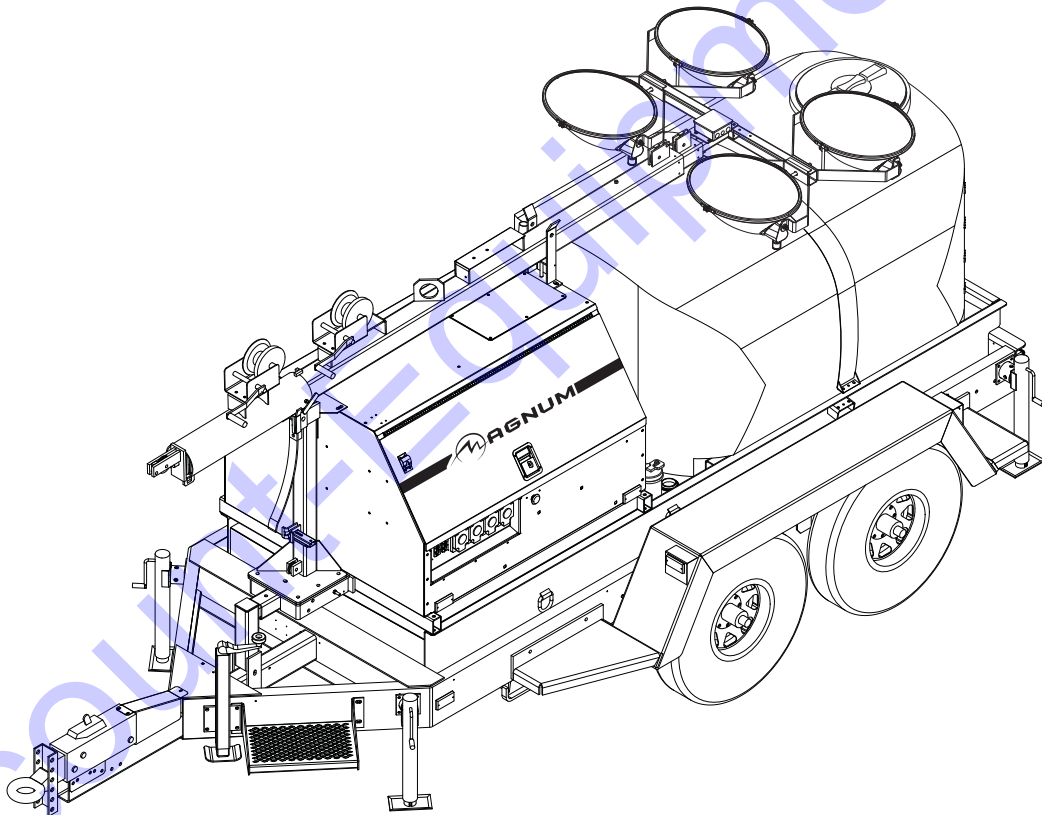




# MAGNUM™

POWER PRODUCTS LLC

## COMBINATION LIGHT TOWER GENERATOR & WATER TRAILER MTT25



### PARTS MANUAL



[www.discount-equipment.com](http://www.discount-equipment.com)

# **Discount Equipment**

Discount-Equipment.com is your online resource for commercial and industrial quality parts and equipment sales.

## **Locations:**

Florida (West Palm Beach): [561-964-4949](tel:561-964-4949)

Outside Florida TOLL FREE: [877-690-3101](tel:877-690-3101)

**Need parts?** Check out our website at [www.discount-equipment.com](http://www.discount-equipment.com)

## **Can't find what you need?**

Click on this link: <http://www.discount-equipment.com/category/5443-parts/> and fill out the request form.

Please have the machine model and serial number available in order to help us get you the correct parts. One of our experienced staff members will get back to you with a quote for the right part that your machine needs.

We sell worldwide for the brands: Genie, Terex, JLG, MultiQuip, Mayco, Toro/Stone, Diamond Products, Magnum, Airman, Mustang, Power Blanket, Nifty Lift, Atlas Copco, Chicago Pneumatic, Allmand Brothers, Essick, Miller Spreader, Skyjack, Lull, Skytrak, Tsurumi, Husquvarna/Target, Whiteman-Concrete/Mortar, Stow-Concrete/Mortar, Baldor, Wacker, Sakai, Snorkel, Upright, Mi-T-M, Sullair, Neal, Basic, Dynapac, MBW, Weber, Bartell, Bennar Newman, Haulotte, Ditch Runner, Blaw-Knox, Himoina, Best, Buddy, Crown, Edco, Wyco, Bomag, Laymor, Terremite, Barreto, EZ Trench, Takeuchi, Basic, Bil-Jax, Curtis, Gehl, Heli, Honda, ICS/PowerGrit, Puckett, Waldon, ASV, IHI, Partner, Imer, Clipper, MMD, Koshin, Rice, Gorman Rupp, CH&E, Cat Pumps, Comet, General Pump, Giant, AMida, Coleman, NAC, Gradall, Square Shooter, Kent, Stanley, Tamco, Toku, Hatz, Kohler, Robin, Wisconsin, Northrock, Oztec, Toker TK, Rol-Air, Small Line, Wanco, Yanmar

**New Equipment - Used Equipment - Rental Equipment - Parts and Accessories**

# **Discount Equipment**

[www.discount-equipment.com](http://www.discount-equipment.com)

**561-964-4949**

Sales: [info@Discount-Equipment.com](mailto:info@Discount-Equipment.com)

Parts: [wbparts@Discount-Equipment.com](mailto:wbparts@Discount-Equipment.com)

## INTRODUCTION

Before servicing this machine, make sure the engine start switch is turned to off "O", the circuit breakers are open (off, "O"), and the negative (-) terminal on battery is disconnected. Attach a "DO NOT START" sign to the control panel. This will notify everyone that the unit is being serviced and will reduce the chance of someone inadvertently trying to start the unit.

### **▲ WARNING**

**Before operating or servicing this equipment, read and understand the Magnum Operating Manual which was included with the unit when shipped from the factory. Failure to do so increases the risk of injury to yourself or others.**

Engine Make: \_\_\_\_\_  
Engine Serial Number: \_\_\_\_\_  
Engine Model Number: \_\_\_\_\_  
Generator Make: \_\_\_\_\_  
Generator Model Number: \_\_\_\_\_  
Generator Serial Number: \_\_\_\_\_  
Unit Model Number: \_\_\_\_\_  
Unit Serial Number: \_\_\_\_\_

### **▲ WARNING**

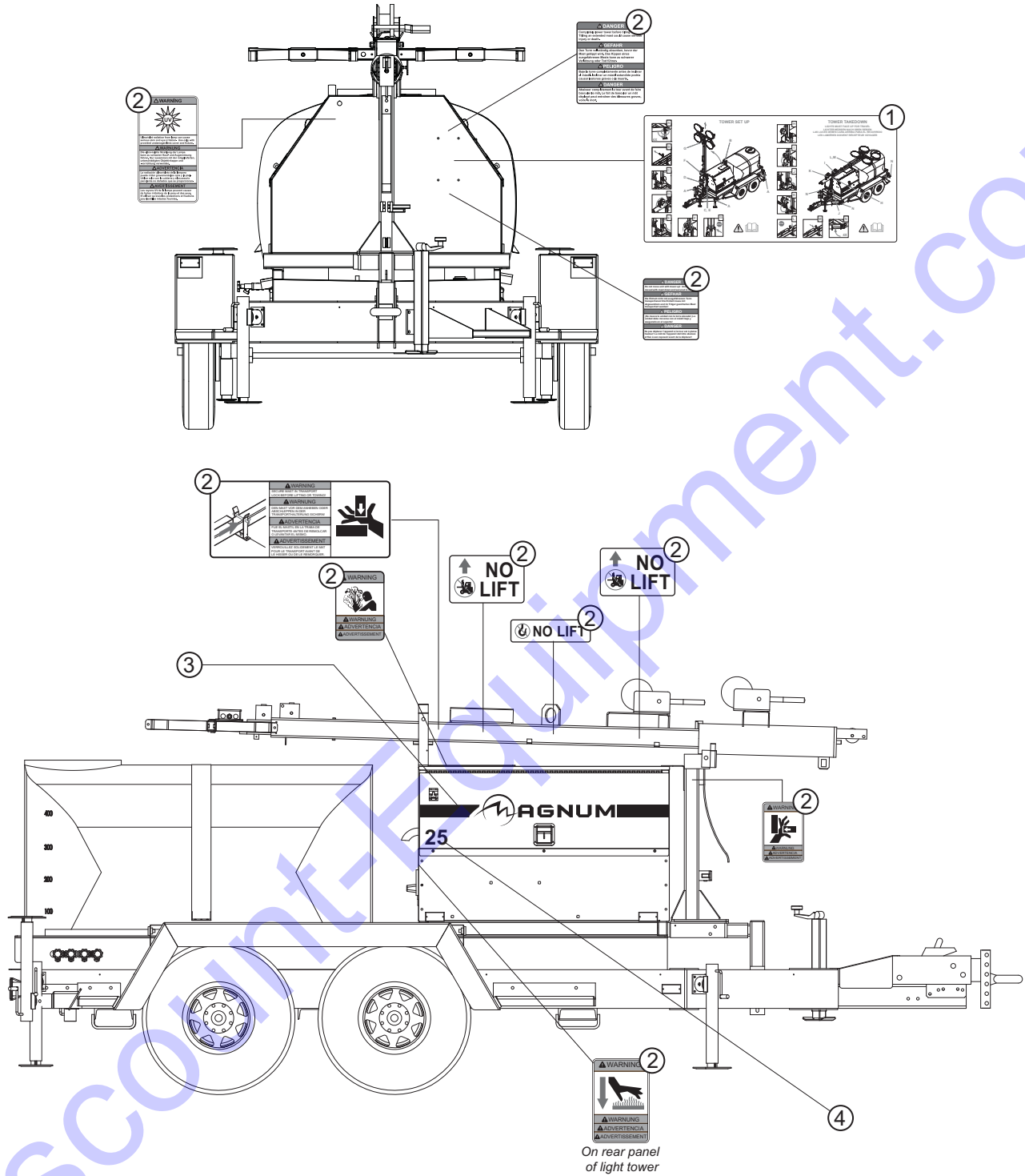
**CALIFORNIA PROPOSITION 65 WARNING:**  
**Diesel engine exhaust and some of its constituents are known to the state of California to cause cancer, birth defects and other reproductive harm.**

# TABLE OF CONTENTS

	Page
INTRODUCTION .....	2
TABLE OF CONTENTS .....	3
UNIT DECALS .....	4 - 7
MANUAL WINCH MAST ASSEMBLY .....	8 - 9
ELECTRIC WINCH MAST ASSEMBLY .....	10 - 11
OVAL LIGHT ASSEMBLY .....	12 - 13
MAST JUNCTION BOX ASSEMBLY - HARD WIRED LIGHTS .....	14
MAST JUNCTION BOX ASSEMBLY - QUICK DISCONNECT LIGHTS .....	15
AUXILIARY OUTLET PANEL ASSEMBLY .....	16
AUXILIARY OUTLET PANEL OPTIONS .....	17 - 18
LIGHT TOWER FRAME ASSEMBLY .....	19
ENCLOSURE ASSEMBLY .....	20 - 21
FUEL TANK AND MANIFOLD ASSEMBLY .....	22 - 23
WATER PUMP ASSEMBLY .....	24 - 25
COOLING SYSTEM ASSEMBLY .....	26 - 27
ENGINE ASSEMBLY .....	28 - 29
CONTROL PANEL ASSEMBLY .....	30 - 31
CONTROL BOX ASSEMBLY .....	32 - 33
LUG DOOR ASSEMBLY .....	34
WATER TANK ASSEMBLY .....	35
GENERATOR ASSEMBLY .....	36
TRAILER BRAKE LINES .....	37
TRAILER ASSEMBLY .....	38 - 39
TRAILER ASSEMBLY .....	40 - 41
NOTES .....	42

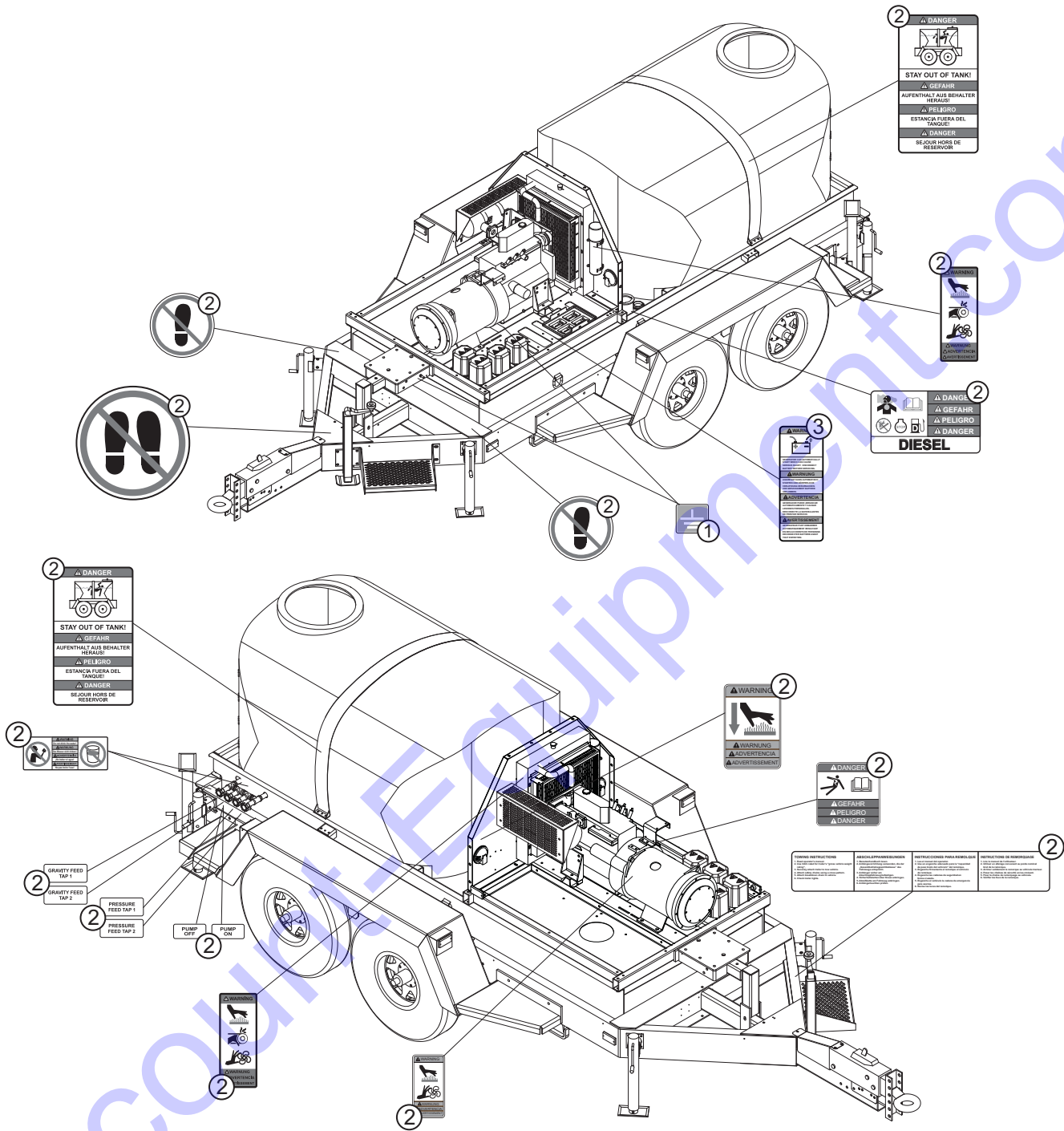
Discount-Equipment.com

# UNIT DECALS



ITEM	PART	QTY	DESCRIPTION	NOTES
1	40066	1	Decal, MTT set-up	
2	40065	1	Decal, MTT safety	
3	16488	1	Decal, Magnum logo w/ red stripe	
4	22545	1	Decal, Number 25 red	

# UNIT DECALS



ITEM	PART	QTY	DESCRIPTION	NOTES
1	12142	2	Decal, ground	
2	40065	1	Decal, MTT safety	
3	13136	1	Decal set, 4250	

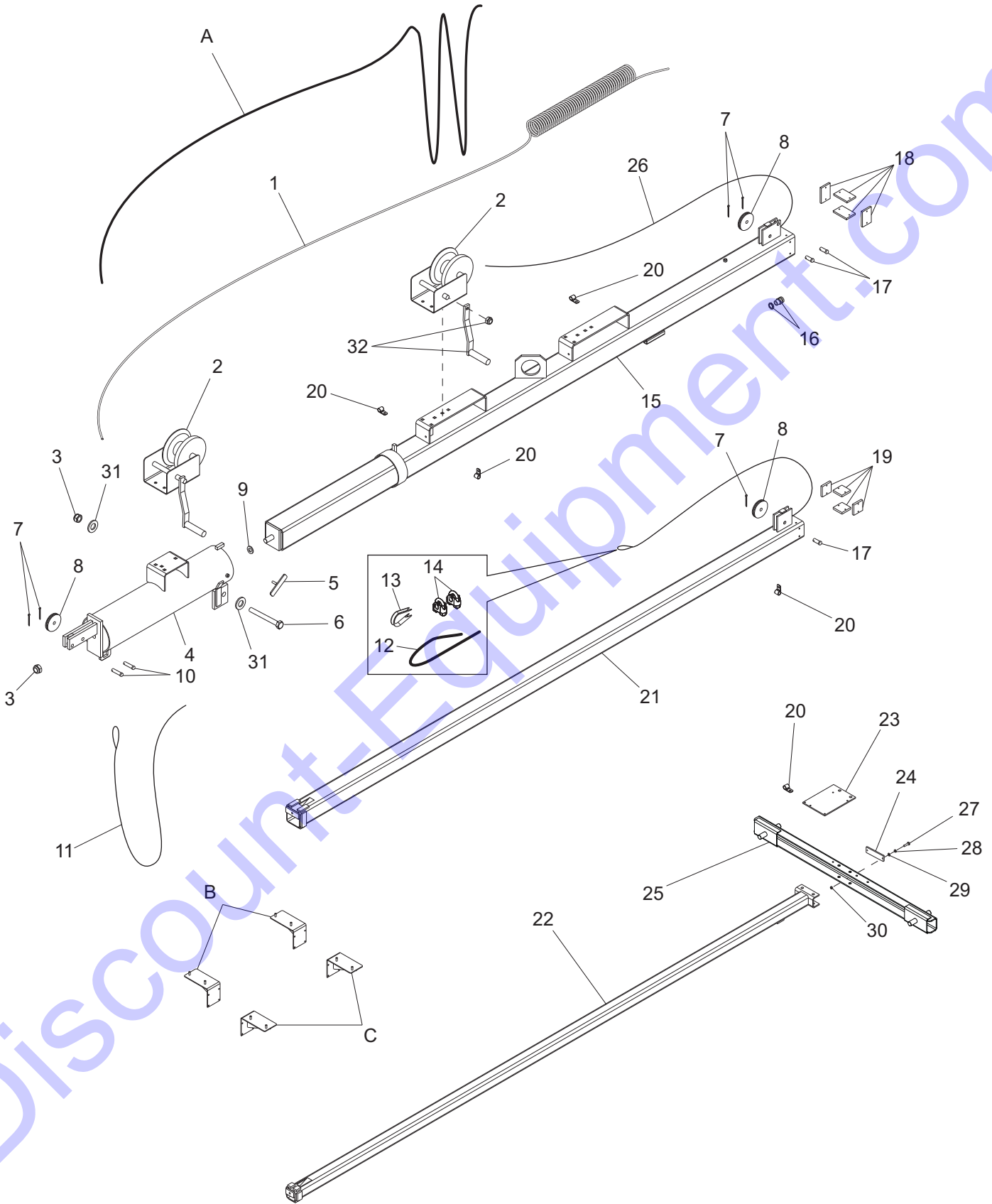


ITEM	PART	QTY	DESCRIPTION	NOTES
1	16488	1	Decal, Magnum logo w/red stripe	
2	40065	1	Decal, MTT safety	
3	13614	1	Decal, mast junction box wiring	
4	12142	1	Decal, ground	
5	22545	1	Decal, Number 25 red	
6	22960	1	Decal, breaker 20A	
7	23203	2	Decal, breaker 30A	
8	23204	2	Decal, breaker 50A	
9	12191	1	Decal, label set MLG25	
10	13136	1	Decal set, 4250	
11	40150	1	Plate, tank cover safety	

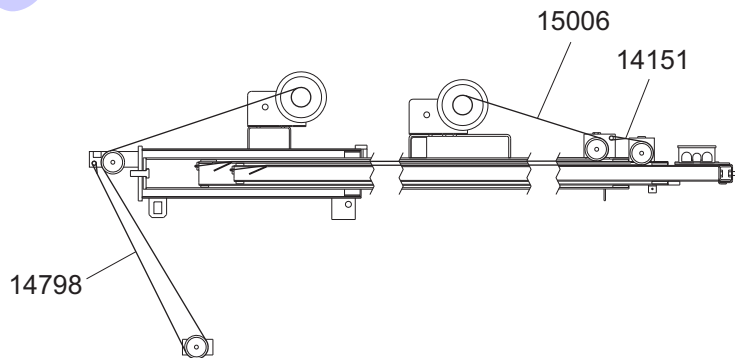
Discount-Equipment.com



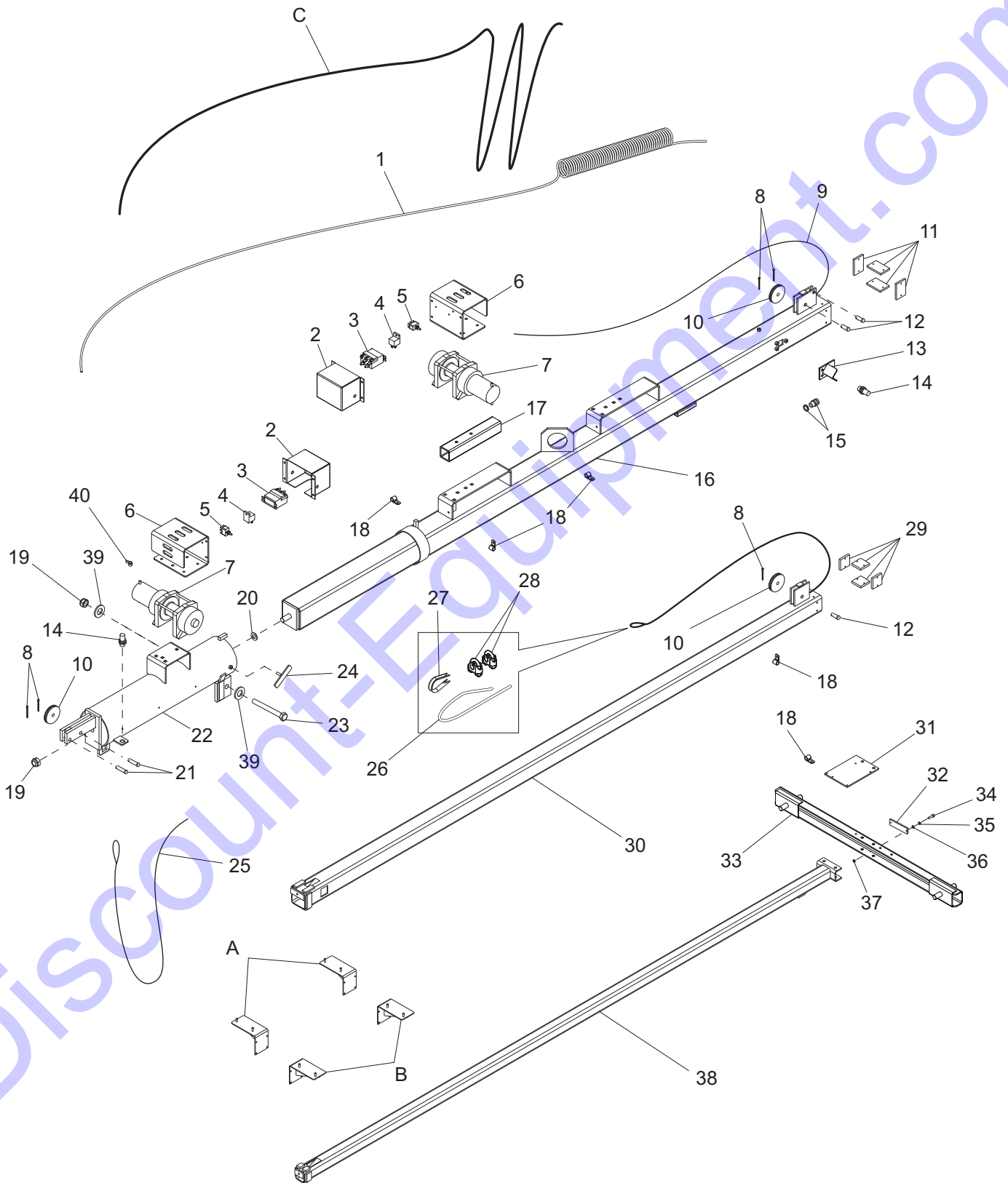
# MANUAL WINCH MAST ASSEMBLY



ITEM	PART	QTY	DESCRIPTION	NOTES
1	11954	1	Coil cord, mast	
2	16600	2	Winch, manual	
3	60584	2	Nut, .750-10 nylock G5 yellow zinc	
4	11902B	1	Weldment, mast tube	
5	11649Z	1	Weldment, t-bolt	
6	15292	1	Screw, .750-10X6.500 hx hd SS	
7	15380	4	Pin, cotter - .125X1.250	
8	14262	2	Sheave, 3 in.	
9	60247	1	Washer, flat .750	
10	14234	2	Pin, clevis .500 x 2.00	
11	14798	1	Cable, .188in. X 16ft. steel w/teardrop	
12	14151	1	Cable, .188in. X 11ft. steel w/ball swedge	
13	15003	1	Thimble, cable - .188	
14	15002	2	Clip, wire rope .188	
15	11933B	1	Weldment, mast - 4.00	
16	14871	1	Strain, relief- .50 npt, .50 cord, w/tight	
17	15015	3	Pin, clevis .500 x 1.25	
18	15014	4	Shim, 2 x 3 x .281 GSM	
19	15013	4	Shim, 2 x 2 x .344 GSM	
20	16143	5	Clamp, tubing .500	
21	11934B	1	Weldment, mast - 3.00	
22	16257B	1	Weldment, mast - 2.00	
23	12095B	1	Bracket, junction box	
24	15829	1	Reflector, red	
25	13527B	1	Weldment, mast crossbar (3/4" studs)	
26	15006	1	Cable - .188 in. X 27 ft. galv steel w/swedge	
27	60397	1	Screw, 10-32X1.000 pan hd phil	
28	60252	2	Washer, split lock #10	
29	60237	2	Washer, flat #10	
30	14231	2	Nut, 10-32 hx	
31	60744	2	Washer, flat .750ID/1.25OD/.06th delrin	
32	15623	2	Winch handle, 9.00 in long	
A	15612	1	Cable, 16-7 cold mast drape	Option
B	13869B	2	Weldment, light storage (RH oval light)	Option
C	13870B	2	Weldment, light storage (LH oval light)	Option

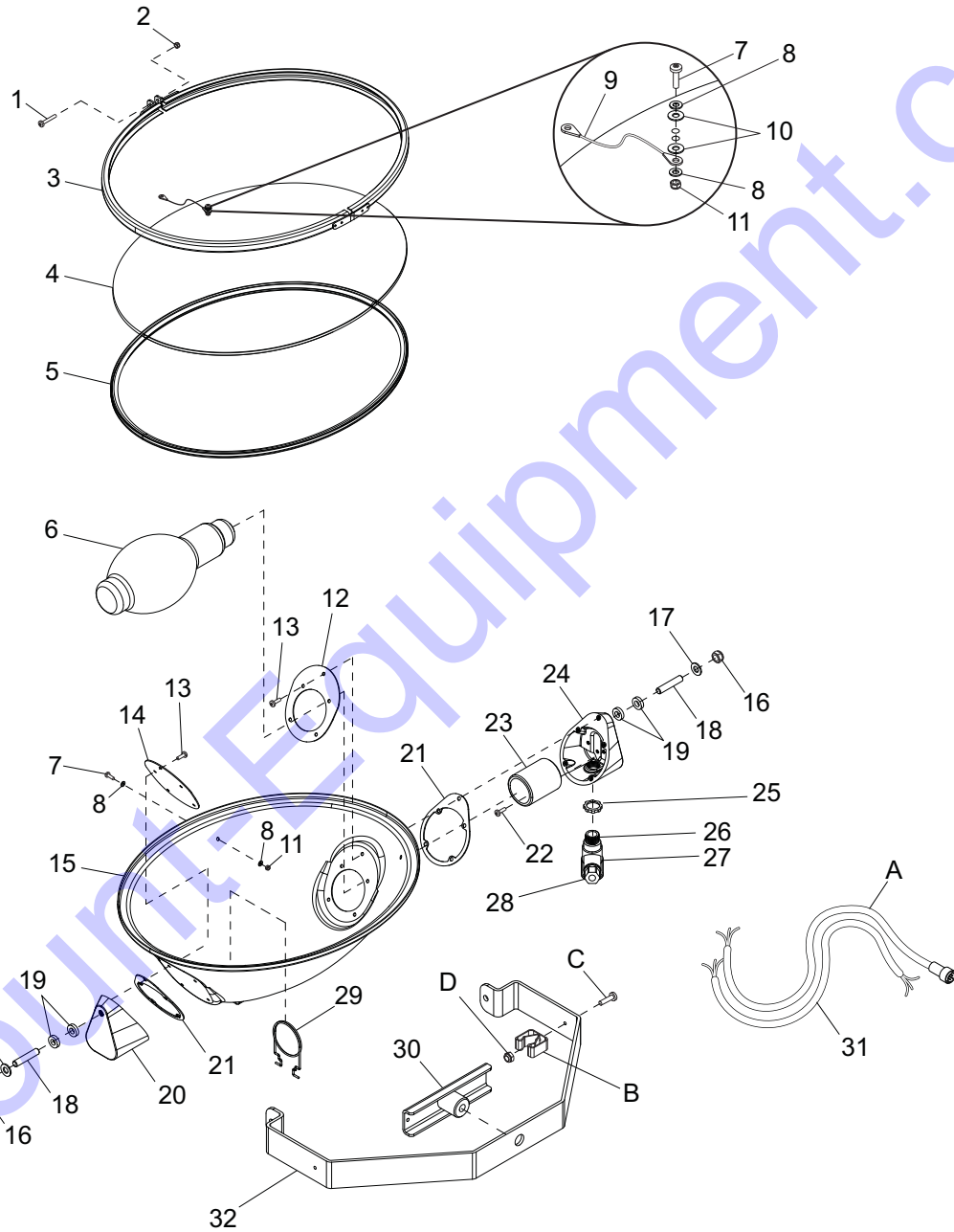


# ELECTRIC WINCH MAST ASSEMBLY



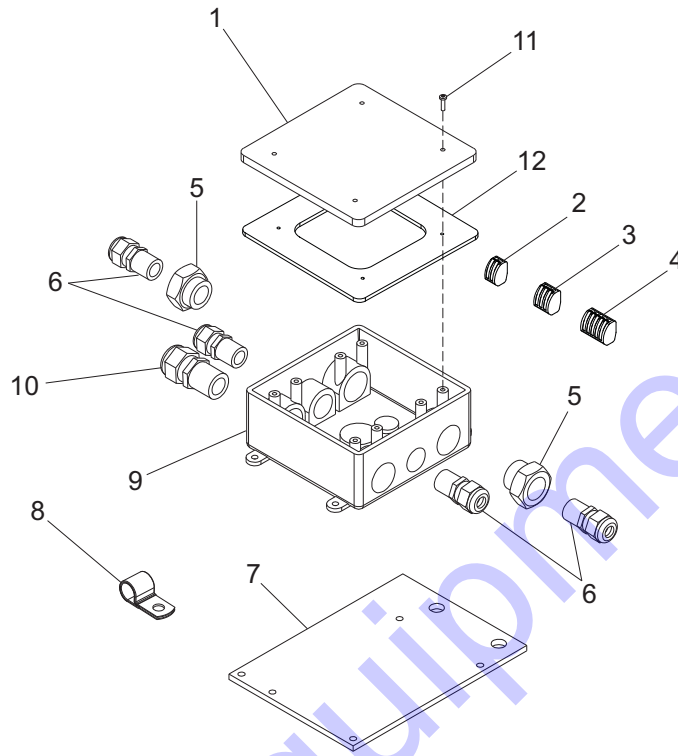
ITEM	PART	QTY	DESCRIPTION	NOTES
1	11954	1	Coil cord	
2	12875B	2	Cover, winch contactor	
3	11293	2	Contactora, electric winch - warn	
4	65049	2	Relay, 12V 30/40A N.O. w/diode	
5	65707	2	Switch, toggle - SPDT spring wtherprf	
6	12872B	2	Bracket, winch mounting	
7	12874	2	Winch, electric - 770 lb. hoist	
8	15380	5	Pin, cotter - .125X1.250	
9	15006	1	Cable, .188 in. x 27ft. w/ball swedge	
10	14262	3	Sheave, 3 in.	
11	15014	4	Shim, 2 x 3 x .281 GSM	
12	15015	3	Pin, clevis .500 x 1.25	
13	65510B	1	Bracket, sensor mtg	
14	65511	2	Sensor, proximity	
15	14871	1	Strain, relief- .50 npt, .50 cord, w/tight	
16	12085B	1	Weldment, 4.00 mast - Electric Winch	
17	11967B	1	Channel, electric winch mount	
18	16143	2	Clamp, tubing .500	
19	60584	2	Nut, .750-10 nylock G5 yellow zinc	
20	60247	1	Washer, flat .750	
21	14234	2	Pin, clevis .500 x 2.00	
22	12876B	1	Weldment, mast tube - Electric Winch	
23	15292	1	Screw, 750-10 x 6.50 hx hd SS	
24	11649Z	1	Weldment, t-bolt	
25	14798	1	Cable - .188in. X 16ft. steel w/teardrop	
26	14151	1	Cable - .188in. X 11ft. steel w/swedge	
27	15003	1	Thimble, cable - .188	
28	15002	2	Clip, wire rope - .188 single saddle	
29	15013	4	Shim, 2 x 2 x .344 GSM	
30	12084B	1	Weldment, 3.00 mast	
31	12095	1	Bracket, junction box	
32	15829	1	Reflector, red	
33	13527B	1	Weldment, mast crossbar (3/4" studs)	
34	60397	1	Screw, 10-32X1.000 pan hd phil	
35	60252	2	Washer, split lock #10	
36	60237	2	Washer, flat #10	
37	14231	2	Nut, 10-32 hx	
38	16257B	1	Weldment, mast - 2"	
39	60744	2	Washer, flat .750ID/1.25OD/.06th delrin	
40	12922	4	Boot, battery cable - red	
A	13869B	2	Weldment, light storage	Option
B	13870B	2	Weldment, light storage	Option
C	15612	1	Cable, 16-7 cold mast drape	Option

# OVAL LIGHT ASSEMBLY



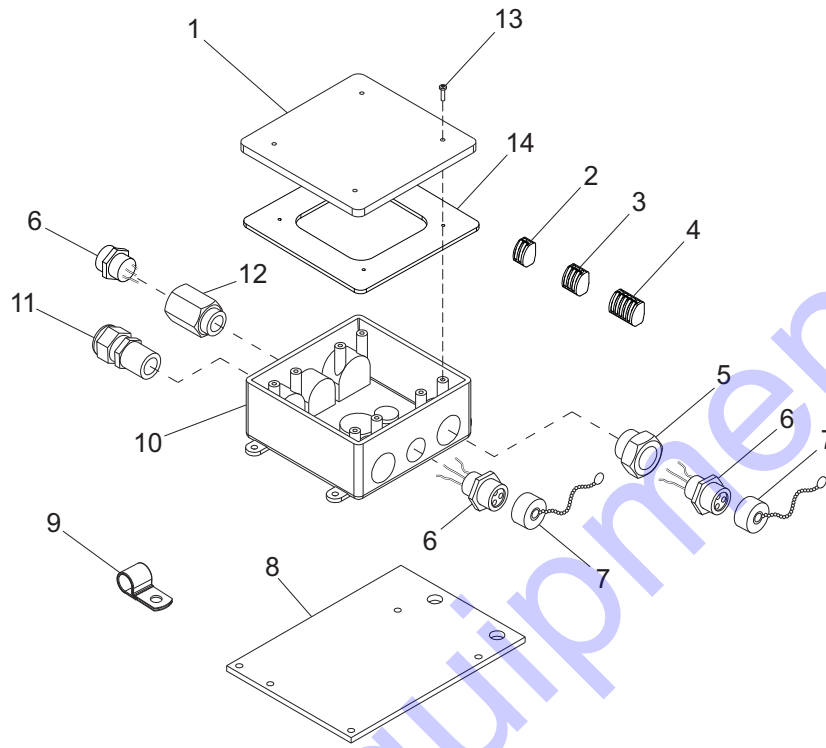
ITEM	PART	QTY	DESCRIPTION	NOTES
1	60304	1	Screw, M5 x 25 pan hd phillips	
2	60447	1	Nut, M5 nylock	
3	13367	1	Assembly, aluminum ring	
4	13369	1	Lens, glass oval	
5	13373	1	Gasket, lens oval	
6	11391	1	Bulb, 1000W MH short length	
7	13399	2	Screw, M4 x 18 pan hd phillips	
8	60067	4	Washer, #10 flat .435/.060 SS	
9	13370	1	Assembly, tether	
10	13372	2	Washer, #4 nylon	
11	60051	2	Nut, M4 nylock	
12	13376	1	Bracket, socket end plate	
13	13388	10	Screw, M5 x 12 slotted hex w/flange	
14	13377	1	Bracket, end plate	
15	13366	1	Housing	
16	60307	2	Nut, 500-13 nyk G5 ZC	
17	60309	2	Washer, .500 flat 1.060/.090 ZC SAE	
18	13392	2	Stud, trunnion	
19	13390	4	Washer, nylon (for part number 13392)	
20	13374	1	Support, housing/trunnion	
21	13378	2	Gasket, silicone	
22	13393	2	Screw, M5 x 12 phillips green	
23	13381	1	Socket, bulb	
24	13375	1	Support, housing/trunnion	
25	15861	1	Nut, special, .500 NPT lock (LN101SC)	
26	13386	1	Fitting, nipple	
27	13387	1	Connector, weather tight	
28	15864	1	Strain relief, .50 NPT .270/.464 ID	
29	13892	1	Support, bulb - oval light	
30	13403	1	Handle, T - oval light (wing nut)	
31	13438	1	Cord, power hard wired	
32	13368	1	Trunnion, oval light	
--	13311	4	Assembly, light fixture hard wired	
A	13383	1	Cord, power quick disconnect	Option
B	19041	1	Clip, spring holder	Option
C	60398	1	Screw, 10-32X.500 pan phil18-8 ss	Option
D	60061	1	Nut, 10-32 nyk G5	Option
--	13601	4	Assy, light fixture/quick discnct	Option

# MAST JUNCTION BOX ASSEMBLY - HARD WIRED LIGHTS



ITEM	PART	QTY	DESCRIPTION	NOTES
1	12109	1	Box cover, 2-gang plastic	
2	66100	4	Connector, 2 pos. Wago	
3	66101	2	Connector, 3 pos. Wago	
4	66102	1	Connector, 5 pos. Wago	
5	60755	2	Fitting, .750MNPT x .500FNPT nylon	
6	15864	4	Strain relief, .500NPT water tight	
7	12095B	1	Bracket, junction box	
8	16143	1	Clamp, tubing .500	
9	12094	1	Box, junction	
10	14656	1	Strain relief, .750NPT water tight	
11	60424	4	Screw, 6-32X.750 pan phil G2 ZC self threading	
12	13749	1	Gasket, junction box - HFI 281000	
-	11789	-	Assembly, mast junction box	

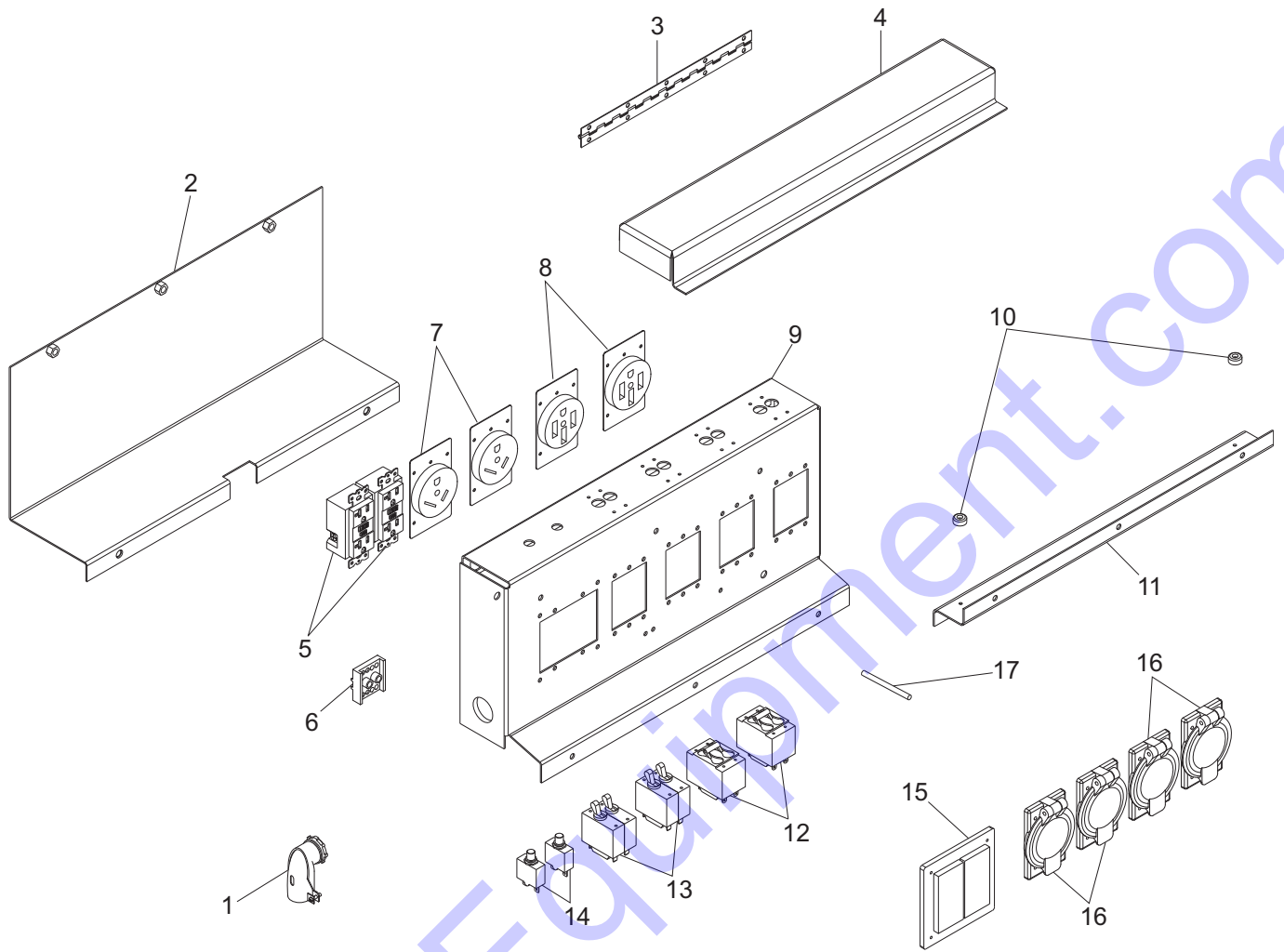
## MAST JUNCTION BOX ASSEMBLY - QUICK DISCONNECT LIGHTS



ITEM	PART	QTY	DESCRIPTION	NOTES
1	12109	1	Box cover, 2-gang plastic	
2	66100	4	Connector, 2 pos. Wago	
3	66101	2	Connector, 3 pos. Wago	
4	66102	1	Connector, 5 pos. Wago	
5	60755	2	Fitting, .750MNPT x .500FNPT nylon	
6	15403	4	Connector, quick disconnect (female)	
7	15404	4	Cap, receptacle w/chain	
8	12095B	1	Bracket, junction box	
9	16143	1	Clamp, tubing .500	
10	12094	1	Box, junction	
11	14656	1	Strain relief, .750NPT water tight	
12	12713	1	Fitting, adapter-1/2"-14 male to 1/2"-14 female	
13	60424	4	Screw, 6-32X.750 pan phil G2 ZC self threading	
14	13749	1	Gasket, junction box - HFI 281000	
-	11957	-	Assembly, mast junction box	

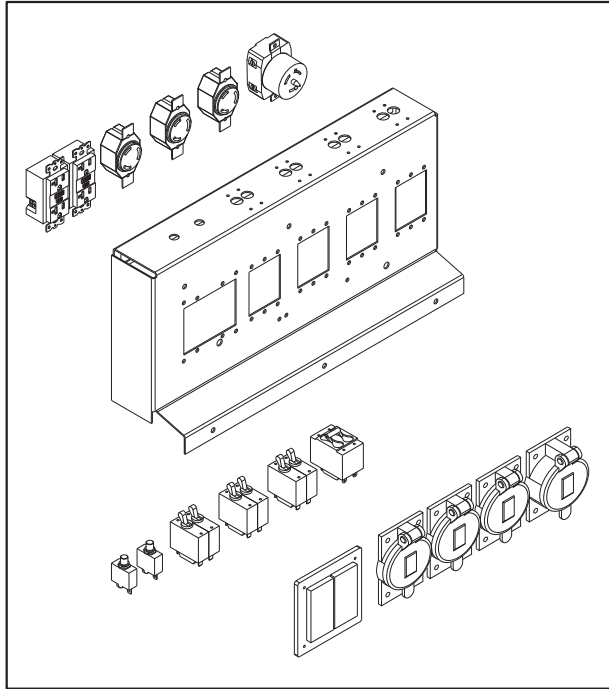


# AUXILIARY OUTLET PANEL ASSEMBLY

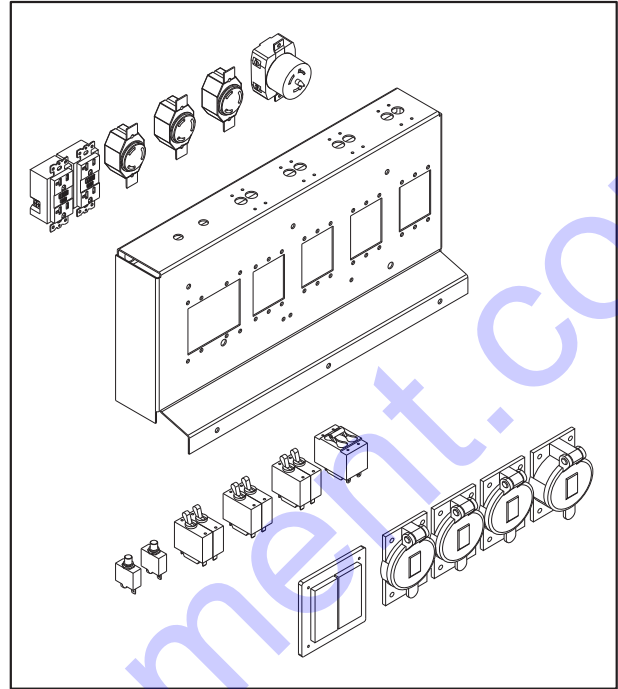


ITEM	PART	QTY	DESCRIPTION	NOTES
1	65535	1	Clamp, 90° 3/4" 2 screw	
2	12248B	1	Weldment, outlet cover	
3	10081	1	Hinge, continuous - 11.00 in.	
4	11484B	1	Cover, breaker	
5	14130	2	Receptacle, 120V/20A GFCI	
6	65530	2	Block, terminal - 2 pole lug type, 7 pos./pole	
7	65489	2	Receptacle, 120V/30A (TT-30R) RV	
8	65815	2	Receptacle, 240V/50A RV (14-50R)	
9	12246B	1	Weldment, outlet panel	
10	15215	2	Rubber bumper	
11	11485B	1	Angle, mounting support	
12	65492	2	Breaker, 50A, 250V, 2 pole aux contact	
13	65851	2	Breaker, 30A, 250V, 2 pole, screw term w/ aux	
14	65849	2	Breaker, 20A, 120V, 1-pole, push button	
15	15849	1	Cover, receptacle - weather proof	
16	65520	4	Cover, receptacle - weather proof 50A 3-wire	
17	18992	1	Stud, ground	
--	13893	1	Receptacle panel (2x5-20R, 2xTT-30R, 2x14 - 50)	

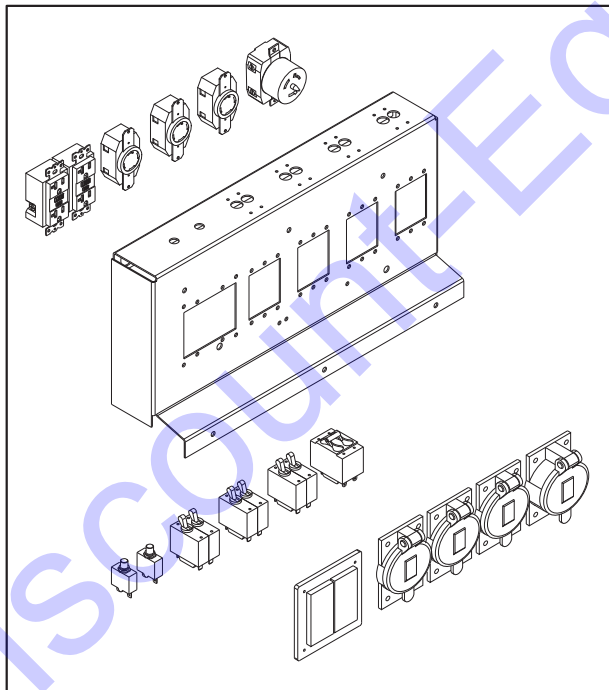
## AUXILIARY OUTLET PANEL OPTIONS



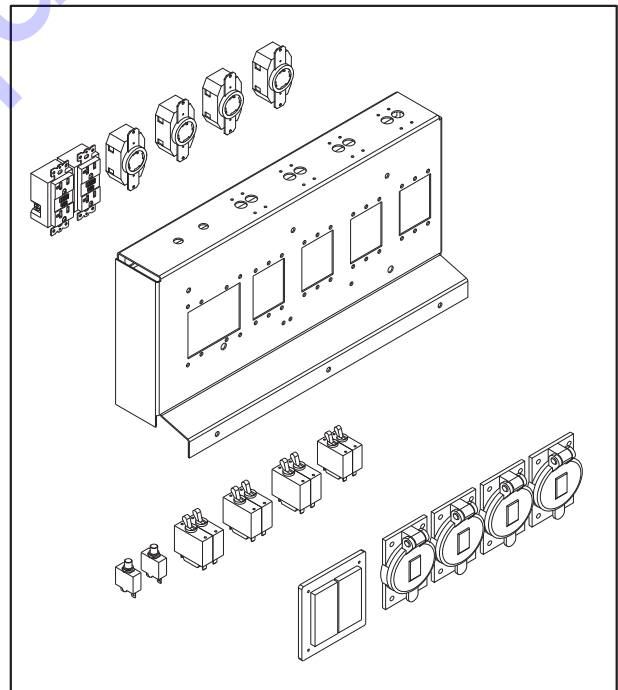
**PART NUMBER 12399**  
Receptacle Panel (2x5-20R, 3xL6-30R, 1x50A)



**PART NUMBER 12402**  
Receptacle Panel (2x5-20R, 3xL6-20R, 1x50A)

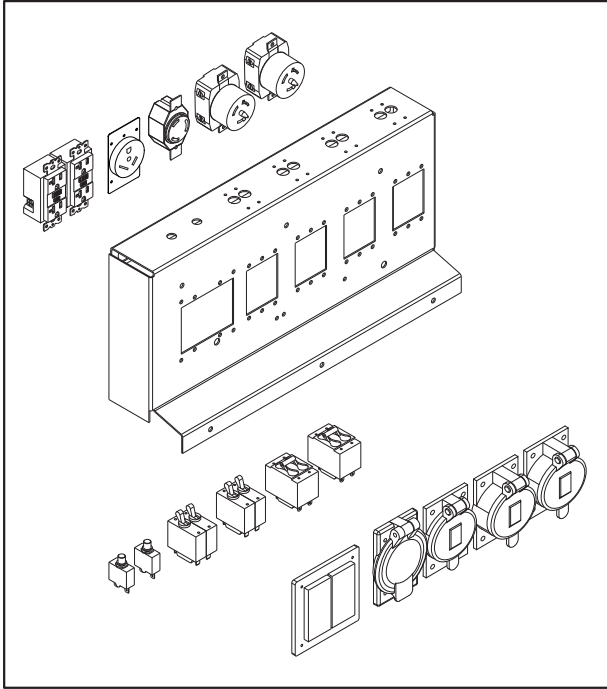


**PART NUMBER 12400**  
Receptacle Panel (2x5-20R, 3xL14-30R, 1x50A)



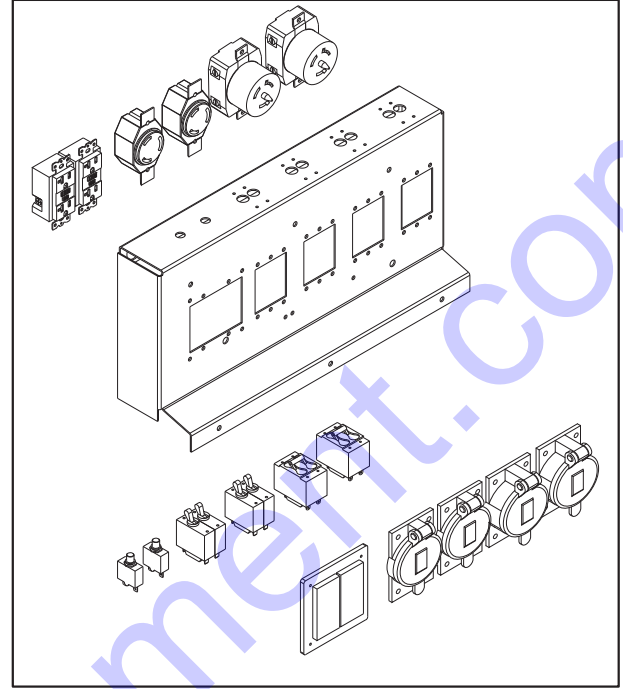
**PART NUMBER 12401**  
Receptacle Panel (2x5-20R, 4xL14-30R)

## AUXILIARY OUTLET PANEL OPTIONS



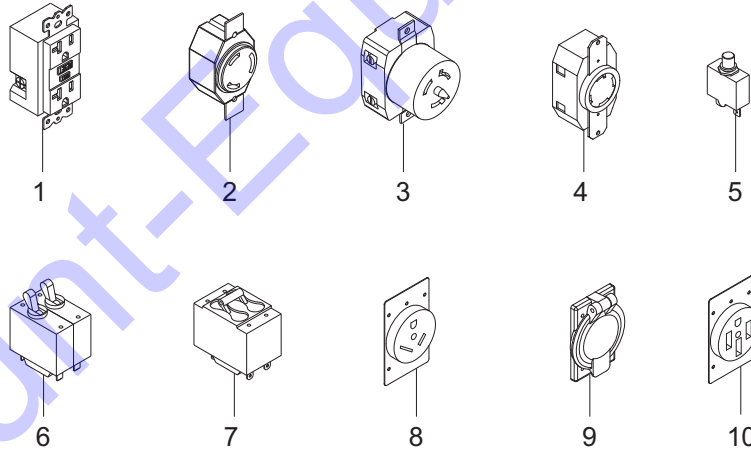
### PART NUMBER 13540

Receptacle Panel (2x5-20R, 1xTT-30R, 1xL6-30R, 2x50A)



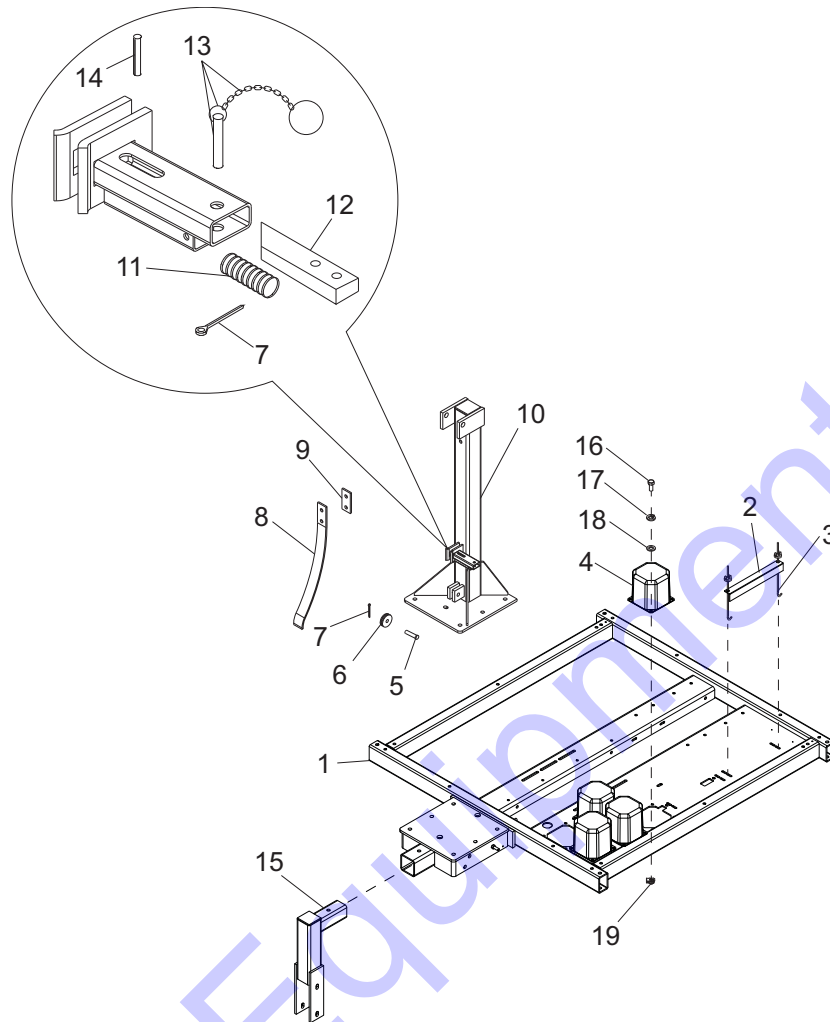
### PART NUMBER 12398

Receptacle Panel (2x5-20R, 2xL6-30R, 2x50A)



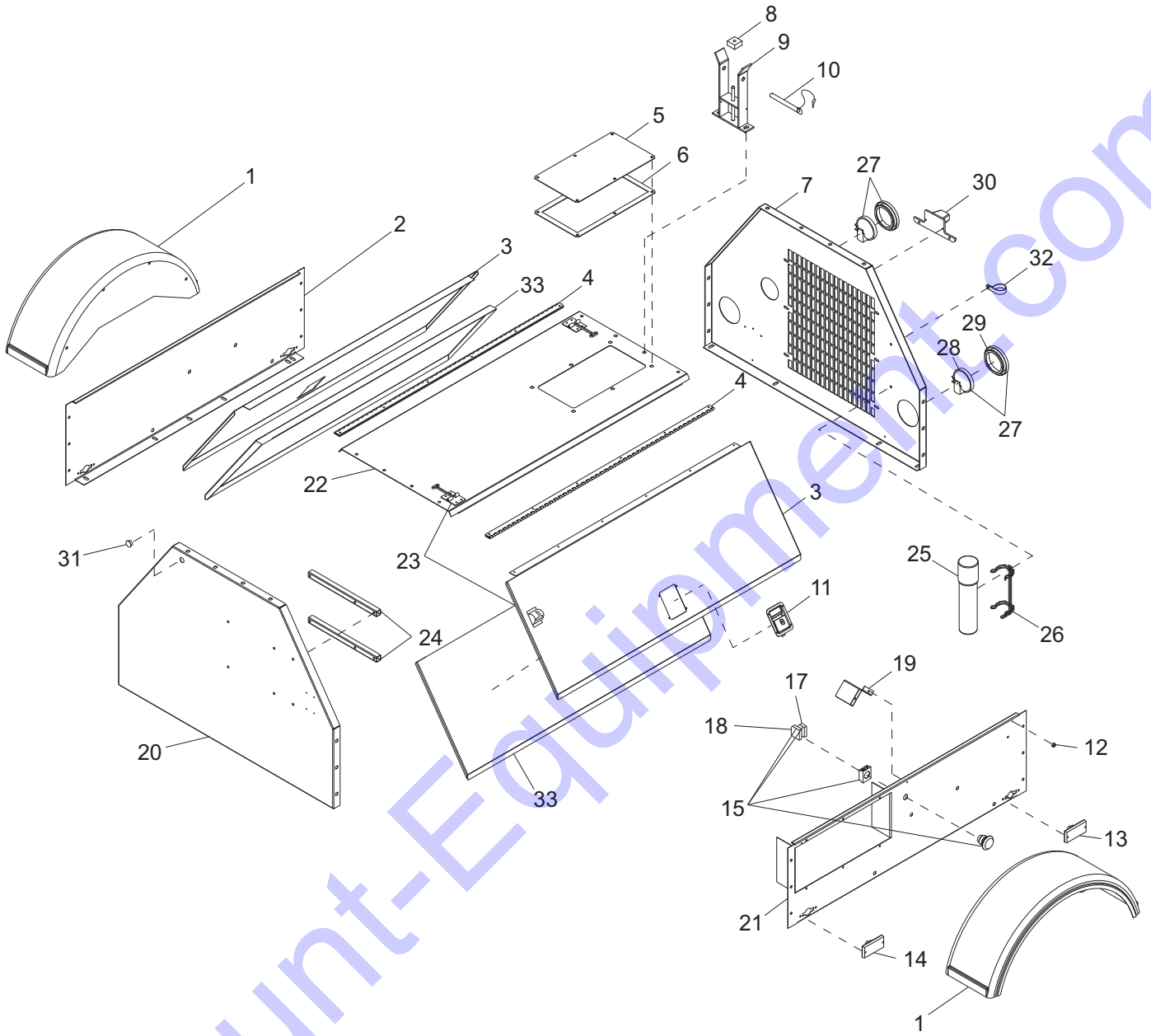
ITEM	PART	QTY	DESCRIPTION	NOTES
1	14130	2	Receptacle, 120V 20A GFCI	
2	14137	-	Receptacle, 240V 30A twist lock	
3	18089	-	Receptacle, 125/250V 50A twist lock	
4	65488	-	Receptacle, 240V 30A twist lock	
5	65849	2	Breaker, 20A, 120V, 1 pole, push button	
6	65851	2	Breaker, 30A 250V 2 pole (JA) screw term, w/aux	
7	65492	-	Breaker, 50A 250V 2 pole aux contact	
8	65489	1	Receptacle, 120V/30A (TT-30R) (RV)	
9	65520	1	Cover, receptacle - weather proof 50A 3-wire	
10	65815	-	Receptacle, 240V/50A (14-50R) (RV)	

# LIGHT TOWER FRAME ASSEMBLY



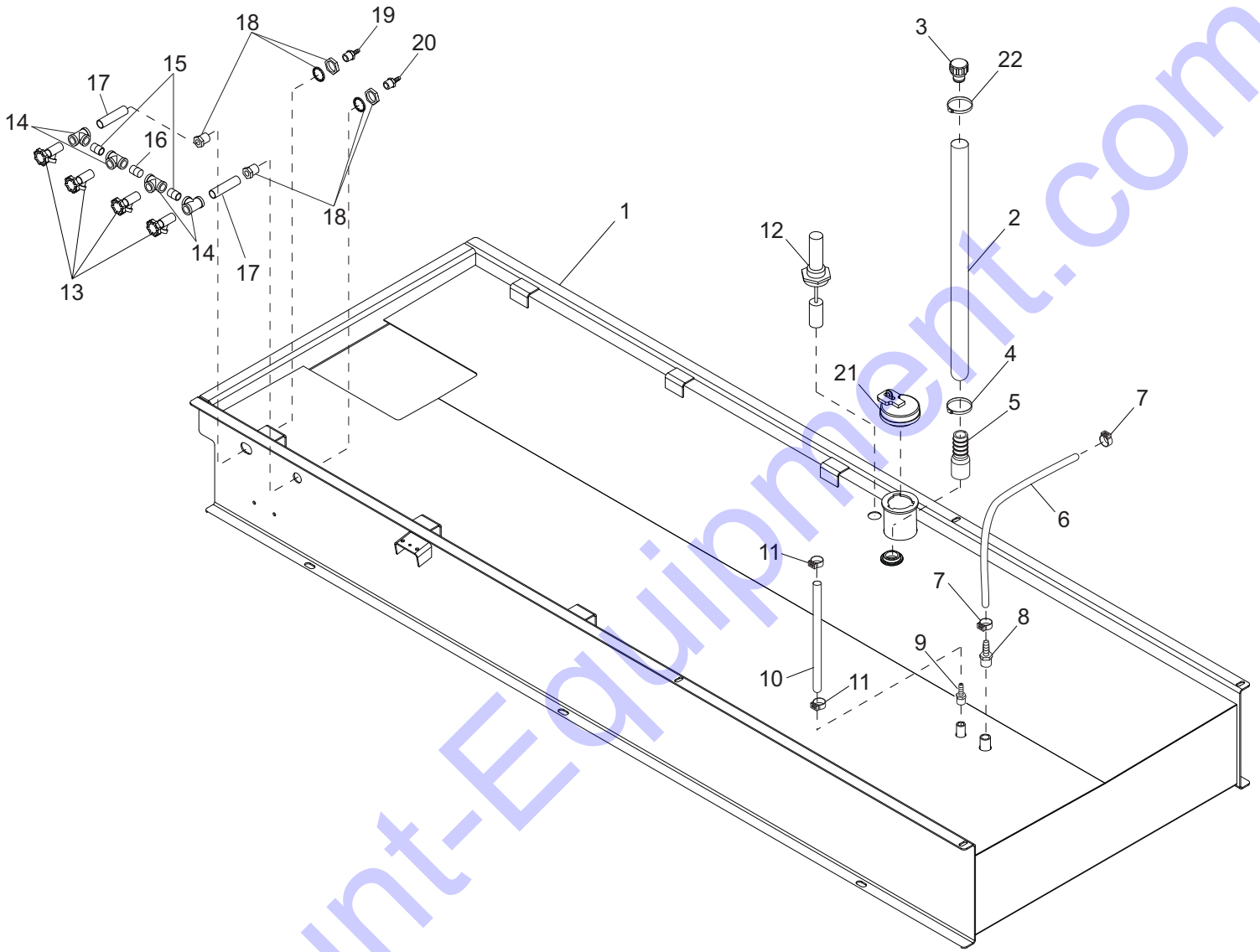
ITEM	PART	QTY	DESCRIPTION	NOTES
1	13567B	1	Weldment, chassis	
2	12924B	1	Angle, battery hold down	
3	14146	2	Bolt, J - .250-20 X 10.00	
4	13301	4	Assy, transformer-can base-60hz-mh-5.5"	
5	15015	1	Pin, clevis - .500 DIA X 1.250	
6	14261	1	Sheave - 2 in.	
7	15380	2	Pin, cotter - .125X1.250	
8	14845B	1	Spring, kickback - 50 lb.	
9	11554Z	1	Spacer plate - kick-back spring	
10	11057B	1	Weldment, mast post	
11	14275	1	Spring - 2.75	
12	14663Z	1	Bar, latch	
13	14403	1	Pin, cotterless - .312 X 1.000	
-	60707	1	Chain, sash - no 8 stainless steel	
-	60706	1	Ring, split - 1.00 SS	
14	15165	1	Pin, roll - .250X1.250 plain	
15	13722B	1	Weldment, mast support	
16	60028	16	Screw, .312-18-1.00 std hx g5 zc	
17	60271	16	Washer, .312 split lock zc	
18	60340	16	Washer, .312 flat .875/.040 18-8ss	
19	60505	16	Nut, .312-18 uclip po long type sprng stl	

# ENCLOSURE ASSEMBLY



ITEM	PART	QTY	DESCRIPTION	NOTES
1	11381	2	Fender, plastic - single wall	
2	11507W	1	Panel, right side sheet metal	
3	16591W	2	Panel, door	
4	16598	2	Hinge, door - .188 pin, 48.5 long	
5	25333W	1	Panel, back access	
6	12195	1	Gasket radiator access plate	
7	10287W	1	Panel, rear - 4000 Isuzu	
8	11935	1	Pad, rubber 2.00 x 2.00 x 1.00	
9	12344ZN	1	Weldment, cradle - common mast	
10	16099	1	Assembly, cradle pin	
11	15123	2	Latch, paddle	
12	15215	6	Bumper, rubber	
13	65406	2	Light, clearance marker - red	
14	65407	2	Light, clearance marker - amber	
15	22550	1	Switch, e-stop, 2NO/1NC (assembly)	
16	65470	1	Switch, e-stop operator	
17	65580	1	Block, e-stop contactor - N.C.(low voltage)	
18	65584	1	Block, e-stop contactor - N.O / N.O	
19	12604	1	Bracket, e-stop guard	
20	12012W	1	Panel, front sheet metal	
21	12257W	1	Panel, left side sheet metal w/ e-stop	
22	10284W	1	Panel, roof w/access hole	
23	12605	2	Latch, door SS - T-style	
24	11543B	2	Spacer, control box	
25	11121	1	Tube, black manual holder, 14"	
26	11222	1	Bracket, manual holder	
27	10219	2	Assy, rear tail/turn light	
28	10220	2	Light, rear tail/turn, no grommet	
29	10221	2	Grommet, rear light, rubber 4.5"	
30	10223	1	Assy, license plate light/bracket	
31	60733	1	Plug, hole (white) - .875	
32	60716	3	Clamp, tubing - 1.50 lt duty	
33	11724	2	Foam, door	

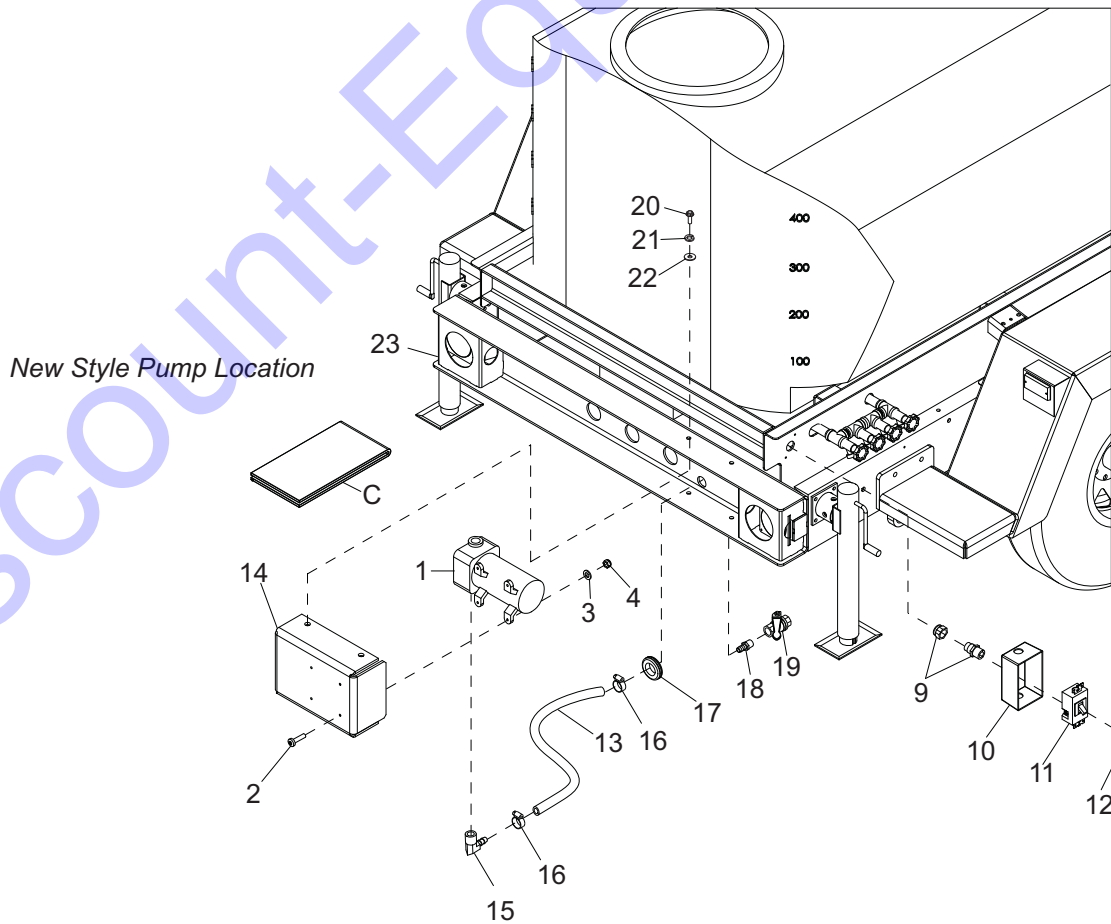
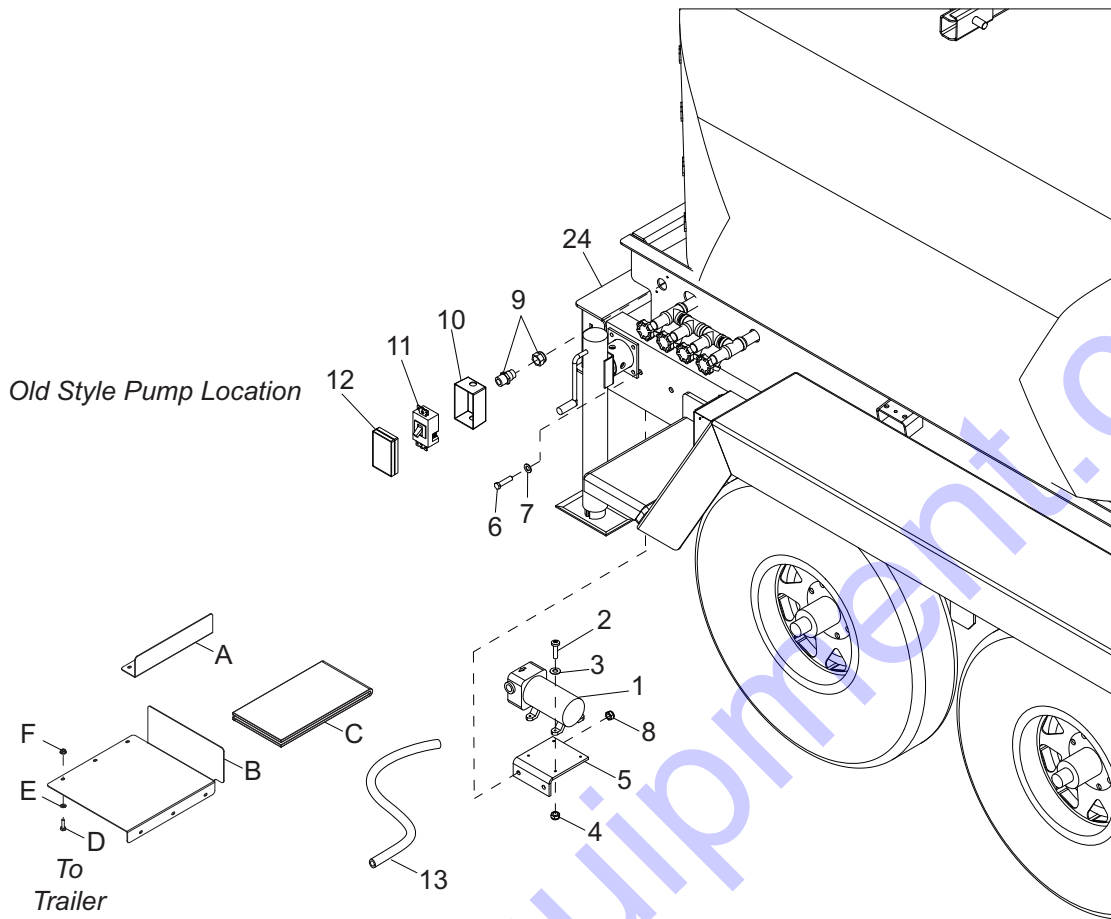
# FUEL TANK AND MANIFOLD ASSEMBLY



ITEM	PART	QTY	DESCRIPTION	NOTES
1	42616B	1	Weldment, fuel tank - MTT	
2	50169	3 ft.	Hose, 1.00" Goodyear class A - red	
3	26379	1	Vent, plastic fuel 1.00 I.D	
4	19338	1	Clamp, hose - SAE 016 (.68-1.50)	
5	21451	1	Fitting, strt-1.000mnpt X 1.000barb	
6	50018	5.5 ft.	Hose, fuel - .312 ID 50 PSI SAE 30R7	
7	60777	2	Clamp, hose - .312 fuel hose crimp style	
8	19180	1	Fitting, strt - .375mnpt X .312barb	
9	17896	1	Fitting, strt -.250npt X .188barb	
10	14211	4.5 ft.	Hose, fuel - .188 ID 50 PSI SAE 30R7	
11	60778	2	Clamp, hose - .188 fuel hose crimp style	
12	21129	1	Gauge, fuel - mechanical	
13	40234	4	Fitting, faucet .750npt brs	
14	61044	4	Fitting, tee-.750npt brs	
15	62027	2	Fitting, nipple, pipe-.750npt X close brs	
16	66104	1	Fitting, nipple, pipe-.750npt X close brs	
17	62026	2	Fitting, nipple, pipe-.750npt X 4.00 brs	
18	62023	2	Fitting, bulkhead - .75fnpt X .75fnpt brs	
19	23810	1	Fitting, strt-.750npt X .750 barb bk nyl	
20	40667	1	Fitting, strt-.750mnpt X .500 barb brs	
21	23707	1	Cap, fuel fill- 3.50	
22	62040	1	Clamp, hose - 1.5" fuel hose crimp style	

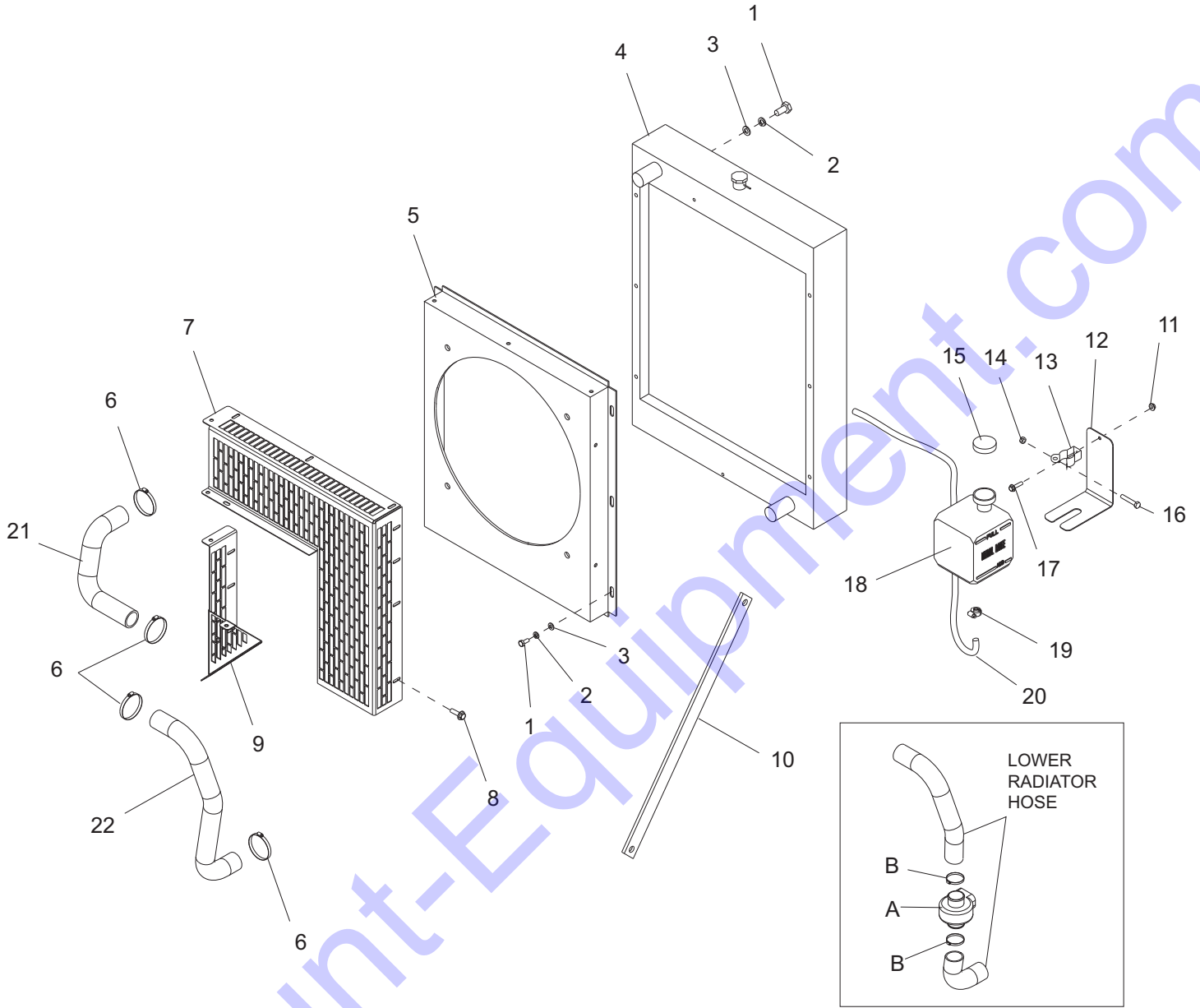


# WATER PUMP ASSEMBLY



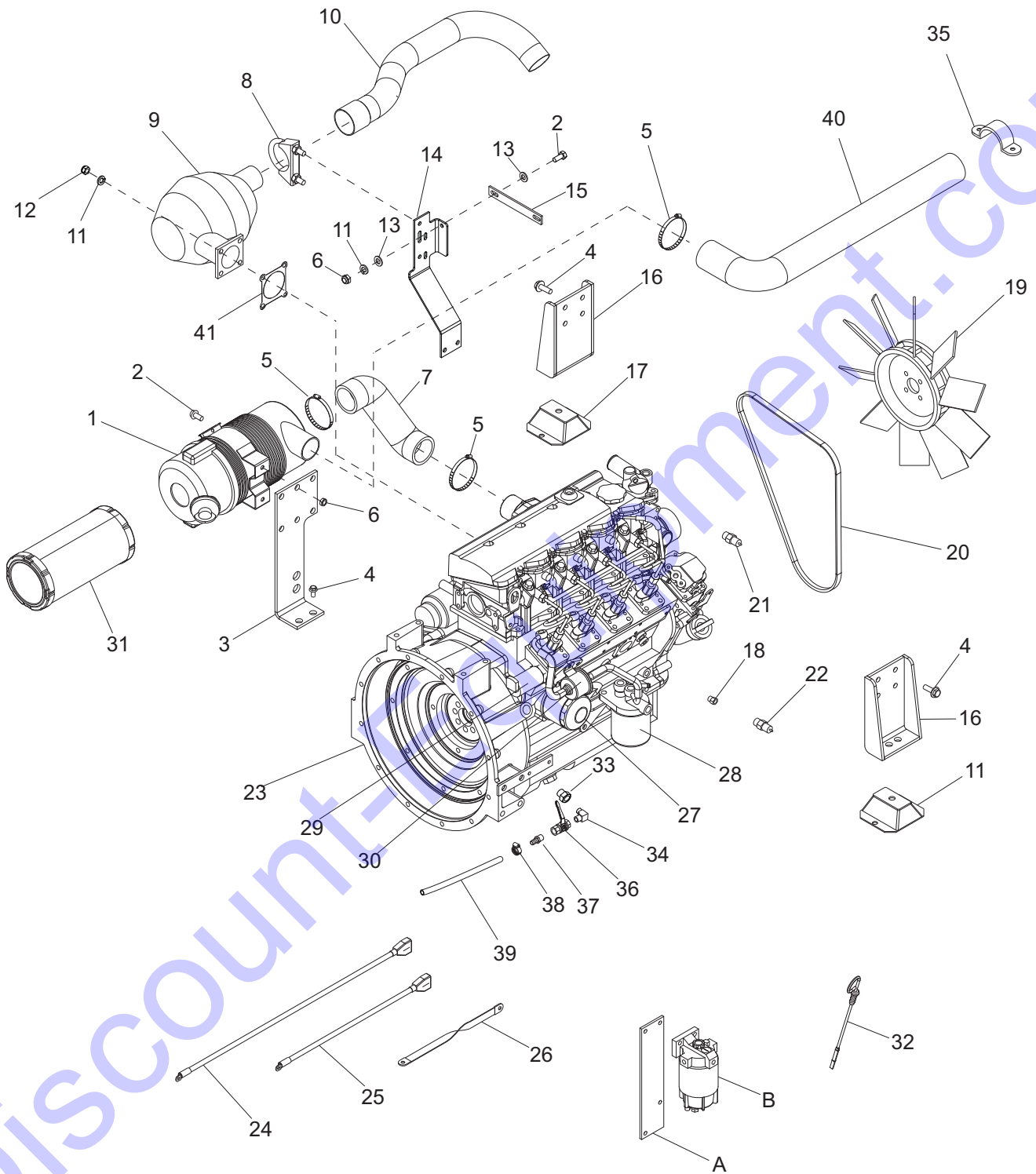
ITEM	PART	QTY	DESCRIPTION	NOTES
1	42142	1	Pump, multi-prpse water 115v 3.3gpm	
2	60396	4	Screw, 10-32 X 1.250 pan phil G2	
3	60067	4	Washer, #10 flat .435/.060 18-8 SS	
4	61116	4	Nut, 10-32 nylk cap G2	
5	42631B	1	Bracket, pump mounting - MTT	Old Style
6	60690	2	Screw, .375-16X1.000 std hex 18-8 ss	
7	60698	2	Washer, .375 flat .875/.040 18-8 ss	
8	60358	2	Nut, .375-16 nylk G5	
9	15863	1	Strain relief - .50 npt watertight .50 I.D.	
10	10150	1	Box, conduit - sgl gang wthprf 5 hole	
11	66248	1	Switch, light - 15A (on/off)	
12	66249	1	Cover, sgl gang light switch cvr-wthprf	
13	50206	2.0 ft.	Hose, fuel - .500 ID 50 psi sae 30R7	
14	49508B	1	Weldment, pump bracket - MTT	New Style
15	49506	1	Fitting, 90 - flowjet (for pump)	
16	60365	2	Clamp, hose - SAE 010 (.56 - 1.06)	
17	63169	2	Grommet, rbr 1.00 id x .25 pan. thx1.38	
18	40728	2	Fitting, str - .500 nptx .500 barb	
19	60996	1	Valve, ball .50 nptf 3-port	
20	60817	4	Screw, .375-16x1.500 std hex 18-8 ss	
21	60703	4	Washer, .375 split lock 18-8 ss	
22	60698	4	Washer, .375 flat .875/.040 18-8 ss	
23	Page 40	1	Weldment, trailer frame MTT	W/pump on rear frame channel
24	Page 40	1	Weldment, trailer frame 125-235 sb	W/pump inside rear frame rail
A	42639B	1	Panel, pump enclosure - side	Option
B	42640B	1	Panel, pump enclosure - bottom	Option
C	66271	1	Heater, battery - 26" w/thermostat	Option
D	60393	9	Screw, .250-20 x 1" std hex	Option
E	60386	9	Washer, flat	Option
F	60161	9	Nut, .250-20 sflg	Option

# COOLING SYSTEM ASSEMBLY



ITEM	PART	QTY	DESCRIPTION	NOTES
1	60034	12	Screw, .375-16X.750 hx ser flg	
2	60206	12	Washer, split lock .375	
3	60386	1	Washer, flat .375	
4	26305	1	Radiator, aluminum	
5	11626B	1	Weldment, fan shroud	
6	15422	4	Clamp, hose SAE 20	
7	11760B	1	Panel, fan guard - right	
8	60115	8	Screw, M6X1.0X12 hx ser flg	
9	11769B	1	Weldment, fan guard - left	
10	11596B	1	Strut, radiator support	
11	60144	1	Nut, .250-20 nylock	
12	22419B	1	Bracket, support overflow jug .5 gal.	
13	19726	1	Clamp, overflow bottle	
14	60047	1	Nut, M6 hx lock class 6 DIN985	
15	19714	1	Cap, overflow bottle	
16	60014	1	Screw, M6X1.0X35 hx GR8.8 DIN933	
17	60135	1	Screw, M6X1.0X20 hx ser flg	
18	20287	1	Jug, overflow 2 qt. (.5 gal.)	
19	14216	1	Clamp, hose SAE 04	
20	19220	1	Hose, overflow	
21	12064	1	Hose, radiator upper	
22	12356	1	Hose, radiator lower	
A	65650	1	Heater, engine - low rad hose 1.5"	Option
B	62245	2	Clamp, hose - cnst torque - .813-1.75	

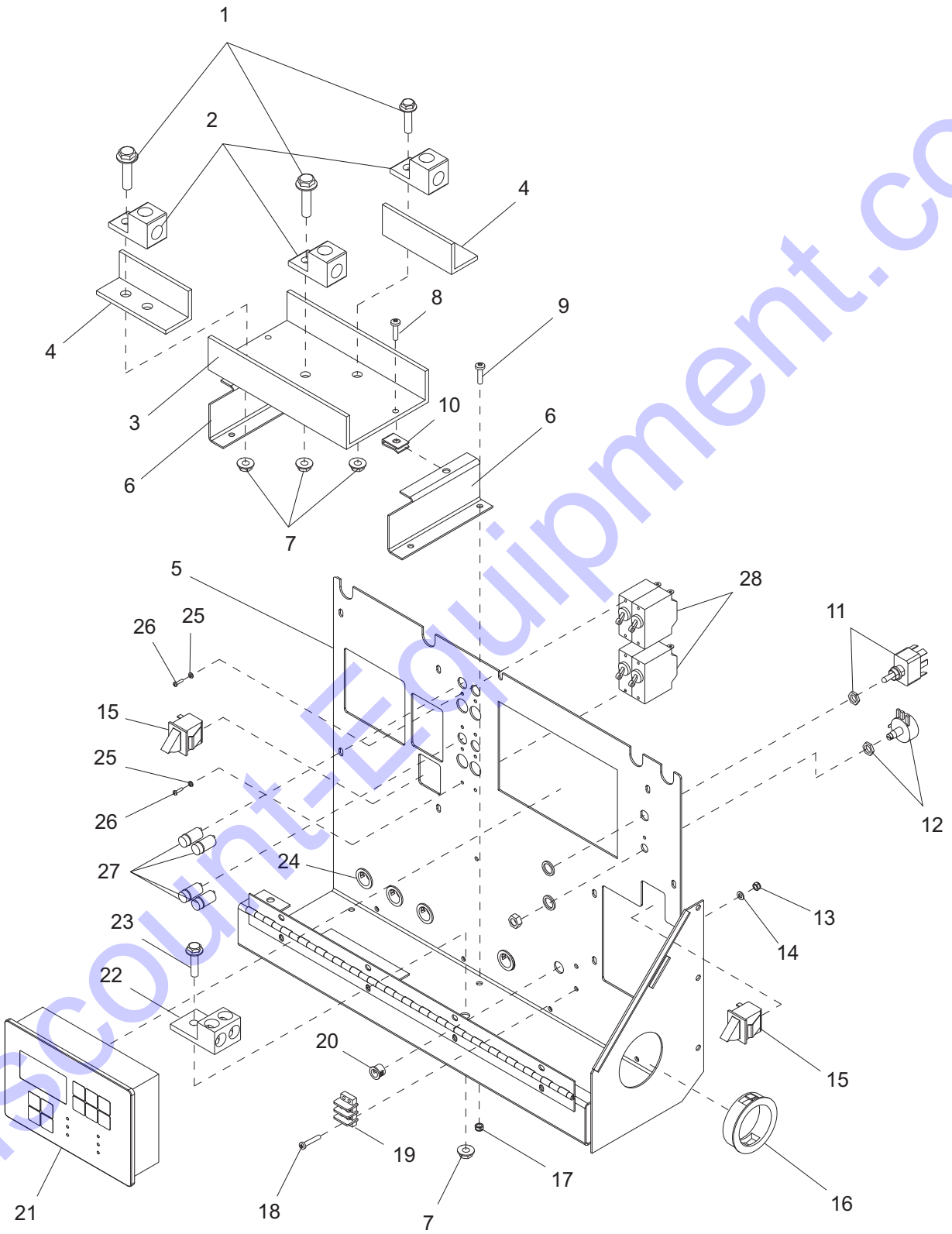
# ENGINE ASSEMBLY



ITEM	PART	QTY	DESCRIPTION	NOTES
1	21505	1	Assembly, air filter	
2	60009	2	Screw, M8X1.25X25 hx ser flg	
3	12990B	1	Bracket, air filter	
4	60018	14	Screw, M10X1.25X20 hx ser flg	
5	60316	3	Clamp, hose - SAE 32	
6	60342	2	Nut, M8X1.25 hx SS	
7	22320	1	Hose, air filter	
8	18823	1	Clamp, 2.0" muffler	
9	10795	1	Muffler - isuzu 4lei (mac)	
10	17902BH	1	Pipe, exhaust - mac muffler 20kW 4000	
11	60271	4	Washer, .312 split-lock zc	
12	60032	4	Nut, m8-1.25 hex g8 zc din934 - 8	
13	60119	2	Washer, .312 flat .875/.070 zc	
14	14340B	1	Bracket, muffler mounting	
15	14341B	1	Bracket, muffler support	
16	11471B	2	Weldment, engine mount	
17	11524	2	Compression mount, 4.38x4.00x1.50	
18	19232	1	Fitting, .125NPTF X .125-28 BSP male	
19	19258	1	Fan, 15.75 in.	
20	22258	1	Belt, fan - 4LE1-PV05	
21	15370	1	Switch, water temp Isuzu	
22	16677	1	Switch, oil pressure	
23	10896	1	Engine, 4LE1NYGV-03	After SN: 1031216
	21674	1	Engine, 4LE1NYGV-01	SN: 0900930 - 1031215
	27293	1	Engine, 4LE2NYGV-01	SN: 0900278 - 0900930
	21674	1	Engine, 4LE1NYGV-01	SN: 0832374 - 0900278
	18064	1	Engine, 4LE1PV05	Before SN: 0832375
24	15074	1	Cable, battery - 4 AWG X 36 in. red	
25	15073	1	Cable, battery - 4 AWG X 25 in. blk	
26	19042	1	Strap, braided ground - 10 in.	
27	15183	1	Filter, oil - Isuzu	
28	15331	1	Fuel filter element	
29	15372	1	Solenoid, fuel shutdown - 4LE	
30	16205	1	Pump, fuel - Isuzu	
31	21937	1	Element, air filter	
32	23899	1	Dipstick, oil, Isuzu 4LEPV05	
33	62030	1	Fitting, strt-.375fnpt x M20 X 1.50 o-ring	
34	23069	1	Fitting, 90-.375mnpt brs	
35	60821	1	Strap, plastic - 2.375 O.D.	
36	19280	1	Valve, ball .375fnpt	
37	25931	1	Fitting, strt-.375npt x .625barb	
38	60365	1	Clamp, hose - SAE 010 (.56-1.06)	
39	50201	4 ft.	Hose, coolant - .625 I.D.	
40	12637	1	Hose, air inlet - 2" I.D. x 24" - 90°	
41	11042	1	Gasket, exhaust manifold - isuzu 3lb1	
-	26049	1	Isuzu, alternator4LE1-PV05 (not shown)	
A	11941B	1	Plate, fuel filter mount	Option
B	11607	1	Filter, fuel - heated	Option
-	12976	1	Element, fuel filter - heated (for 11607)	Option (not shown)
-	26306	1	Fan, 15.75 in. inc. arc	Option (not shown)

**Note:** Engine and generator parts used in all Magnum Power Products LLC equipment carry the Original Equipment Manufacturer (OEM) warranty unless otherwise stated. OEM warranty parts must be purchased through an OEM dealer. Please contact Magnum Power Products LLC with questions.

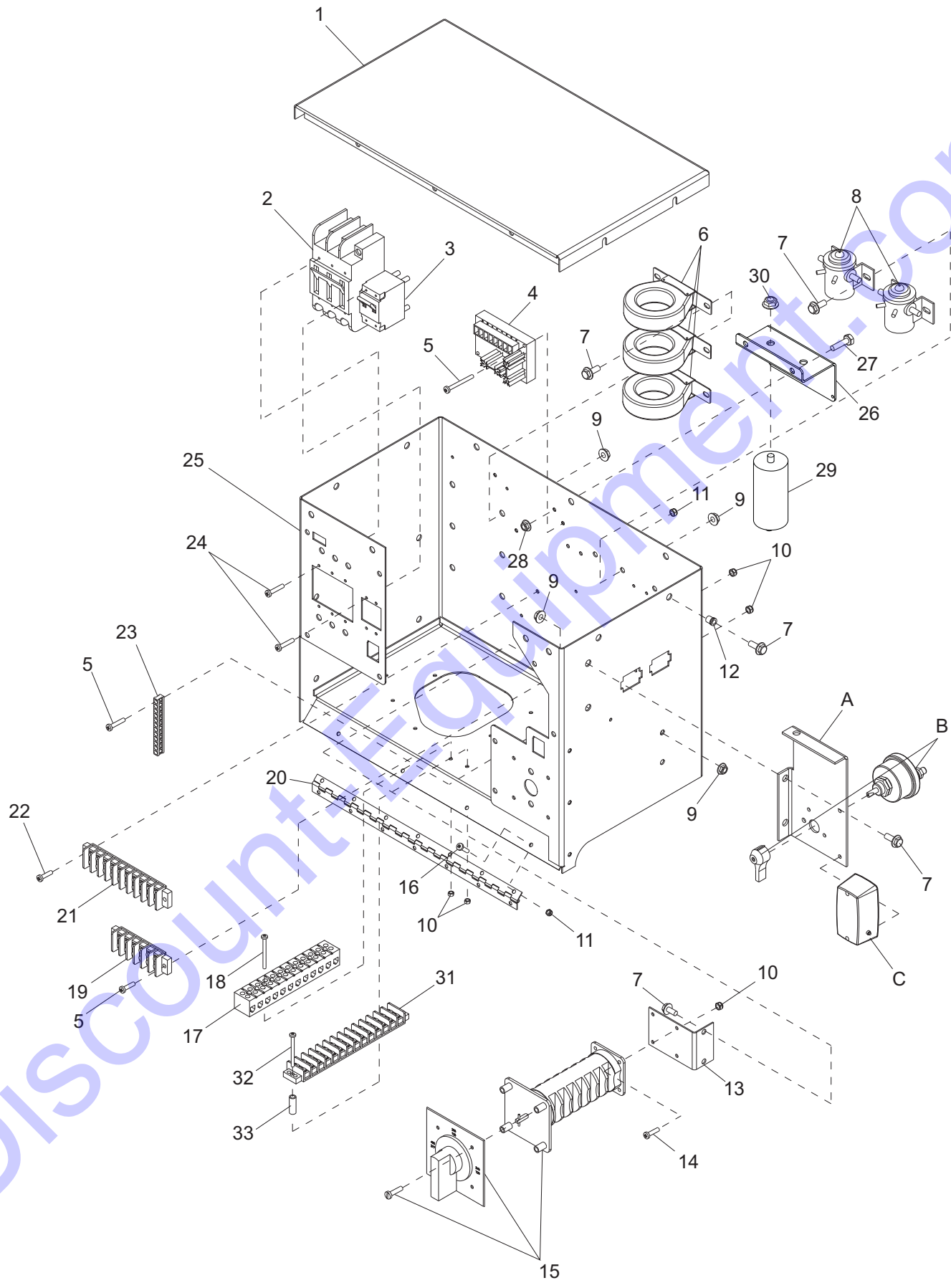
# CONTROL PANEL ASSEMBLY



ITEM	PART	QTY	DESCRIPTION	NOTES
1	60160	3	Screw, M8X1.25X30 hx ser flg	
2	65287	3	Lug, terminal single #6-350 MCM	
3	12065	1	Channel, glastic	
4	12066	2	Angle, glastic	
5	13126W	1	Panel, control	
6	11811W	2	Bracket, glastic plate	
7	60020	7	Nut, M8 hx ser flg lock	
8	60062	3	Screw, 10-32X.750 pan hd phil	
9	60044	2	Screw, M5X0.8X12 pan hd phil	
10	60738	2	Nut, 10-32 speed u-type	
11	25077	1	Switch, toggle - SPST 20A VAC	
12	18113	1	Potentiometer, 2.5K 2 watt	
13	60057	4	Nut, M4 hx hd	
14	60084	2	Washer, flat M4	
15	12632	2	Switch, trigger safety, N.O. & N.C.	
16	18496	1	Bushing, 2.50 x 2.00 ID	
17	60038	4	Nut, M5 HX nylock	
18	60355	2	Screw, M4X25 pan hd phil	
19	18890	1	Terminal block, 2-pos	
20	19163	1	Bushing, .500 x .375 ID	
21	66185	1	Controller, eng/gen - programmed	
22	18614	1	Lug, terminal dual #6-250MCM 2 hole	
23	60009	3	Screw, M8X1.25X25 hx ser flg	
24	19227	4	Bushing, .812 OD x .625 ID	
25	60058	8	Washer, #6 split lock	
26	60190	8	Screw, 6-32X.312 pan phil	
27	65325	4	Light, indicator - green w/ wire	
28	14249	4	Breaker, 15A 250V 1pole	
-	18934	1	Guard, potentiometer (not shown)	

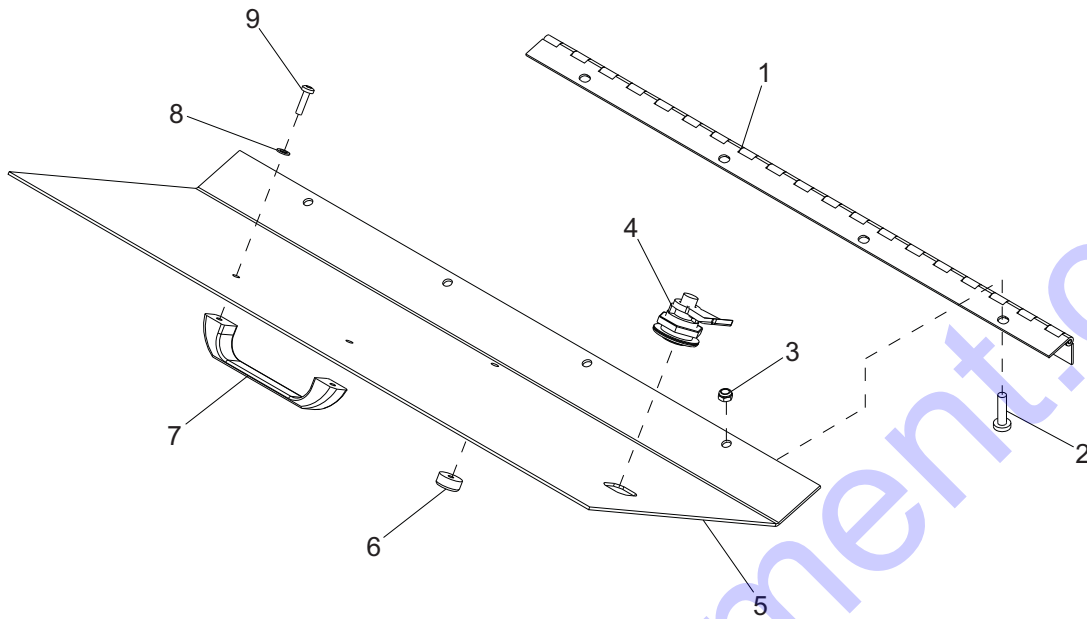


# CONTROL BOX ASSEMBLY



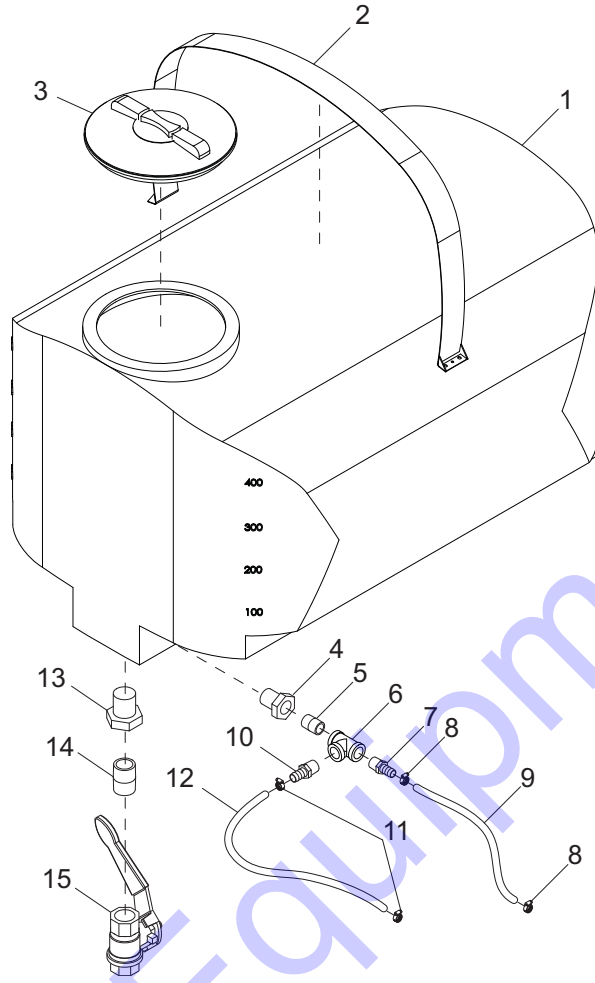
ITEM	PART	QTY	DESCRIPTION	NOTES
1	12694W	1	Panel, top control box	
2	65619	1	Breaker, 90A, 3 pole	
3	65429	1	Breaker, 100A, 250V, 2 pole	
4	18556	1	Regulator, voltage - SE 350	
5	60355	6	Screw, M4X35 pan head phil	
6	65442	3	Transformer, current - 200:5A	
7	60115	25	Screw, M6X1.0X12 hx ser flg	
8	66455	2	Relay, ignition solenoid (12V-65 A)	
9	60036	14	Nut, M6 hx ser flg lock	
10	60051	13	Nut, M4 hx nylock	
11	60061	6	Nut, 10-32 hx nylock	
12	60023	11	Insert, threaded M6	
13	11764B	1	Bracket, phase switch	
14	60091	4	Screw, M4X12 pan hd phil	
15	65456	1	Switch, phase - 63A, 3-pos (Y,y,Z)	
16	60044	4	Screw, M5X0.8X12 pan hd phil	
17	65590	1	Block, terminal - 12 pos. lug type	
18	60045	3	Screw, M4X35 pan hd phil	
19	65481	1	Block, terminal - 6 pos.	
20	18598	1	Hinge, controller panel - 18.75	
21	14203	1	Block, terminal 10 pos.	
22	60062	2	Screw, 10-32X.750 pan hd phil	
23	14204	1	Kit, ground bar	
24	60190	10	Screw, 6-32X.312 pan hd phil	
25	13137W	1	Weldment, control box	
26	13343B	1	Bracket, dual cap mount	
27	60168	2	Screw, .312-18X.750 hx hd G5	
28	60095	2	Nut, .312-18 ser flg G5 case hard	
29	65959	2	Capacitor, dual 24 $\mu$ F sealed stud mount	
30	60098	2	Nut, .500-13 ser flg G5	
31	66013	1	Terminal block, 14 pos.	
32	24925B	2	Spacer, .50 OD .344 ID 1.00 long, black	
33	60159	2	Screw, M4-0.70X45 pan phil G4.8	
A	12021B	1	Bracket, control box roof	Option
B	65498	1	Switch, disconnect	Option
C	11947	1	Light, interior with switch	Option

# LUG DOOR ASSEMBLY



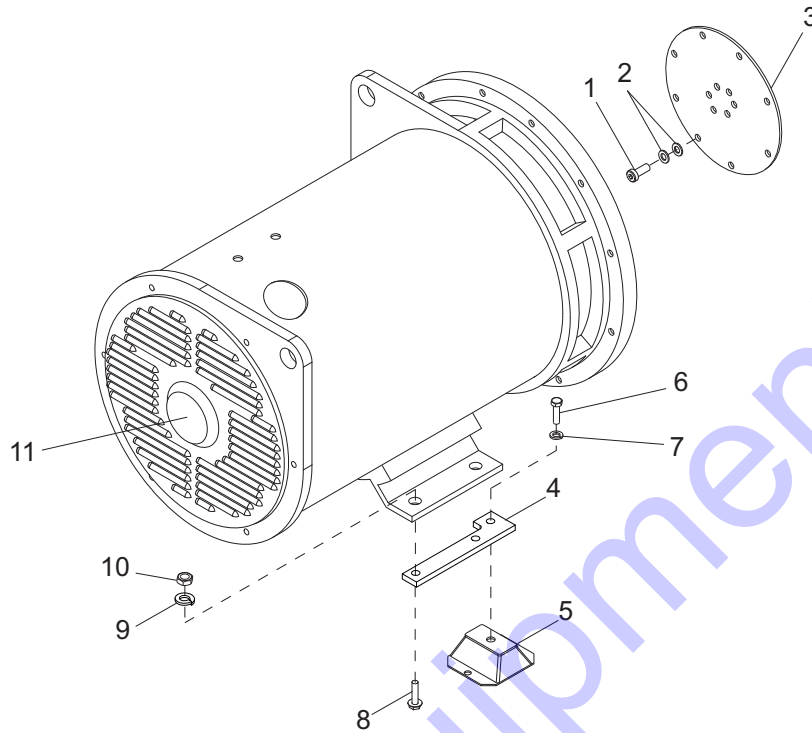
ITEM	PART	QTY	DESCRIPTION	NOTES
1	18598	1	Hinge, controller panel - 18.75	
2	60156	8	Screw, M5X0.8X16 pan hd phil	
3	60038	4	Nut, M5 hx nylock DIN985	
4	20762	1	Lock, door - 1/4 turn cam	
5	12631W	1	Panel, lug door	
6	15215	1	Bumper, rubber	
7	18893	1	Handle, lug door	
8	60043	2	Washer, split lock M5 DIN127	
9	60068	2	Screw, 10-24X.500 pan phil	
--	12630	1	Assembly, lug door	

# WATER TANK ASSEMBLY



ITEM	PART	QTY	DESCRIPTION	NOTES
1	42605	1	Tank, water - 500 gallon black	
2	40789B	1	Weldment, tank strap	
3	40756	1	Cover, water tank - 16.00 MLT 0500	
4	24006	1	Fitting, rdcr - 1.000 mnpt X .750fnpt bp	
5	25089	1	Fitting, nipple, pipe - .750npt X close	
6	61044	1	Fitting, tee - .750npt brs	
7	23810	1	Fitting, strt -.750npt X .750 barb bk nyl	
8	15422	2	Clamp, hose - sae 020 (.75-1.75)	
9	50332	1.33 ft.	Hose, fuel - .750 ID 175 psi sae 30R7	
10	40667	1.	Fitting, strt-.750mnpt X .500 barb brs	
11	19453	2	Clamp, hose - sae 006 (.37-.87)	
12	50206	1 ft.	Hose, fuel - .500 ID 50 psi sae 30R7	
13	40740	1	Fitting, bulkhead-2.000npt poly/3.000 hole	
14	21127	1	Pipe fitting, nipple, pipe - 2.000npt X close	
15	40229	1	Valve, ball 2.00 fnpt	

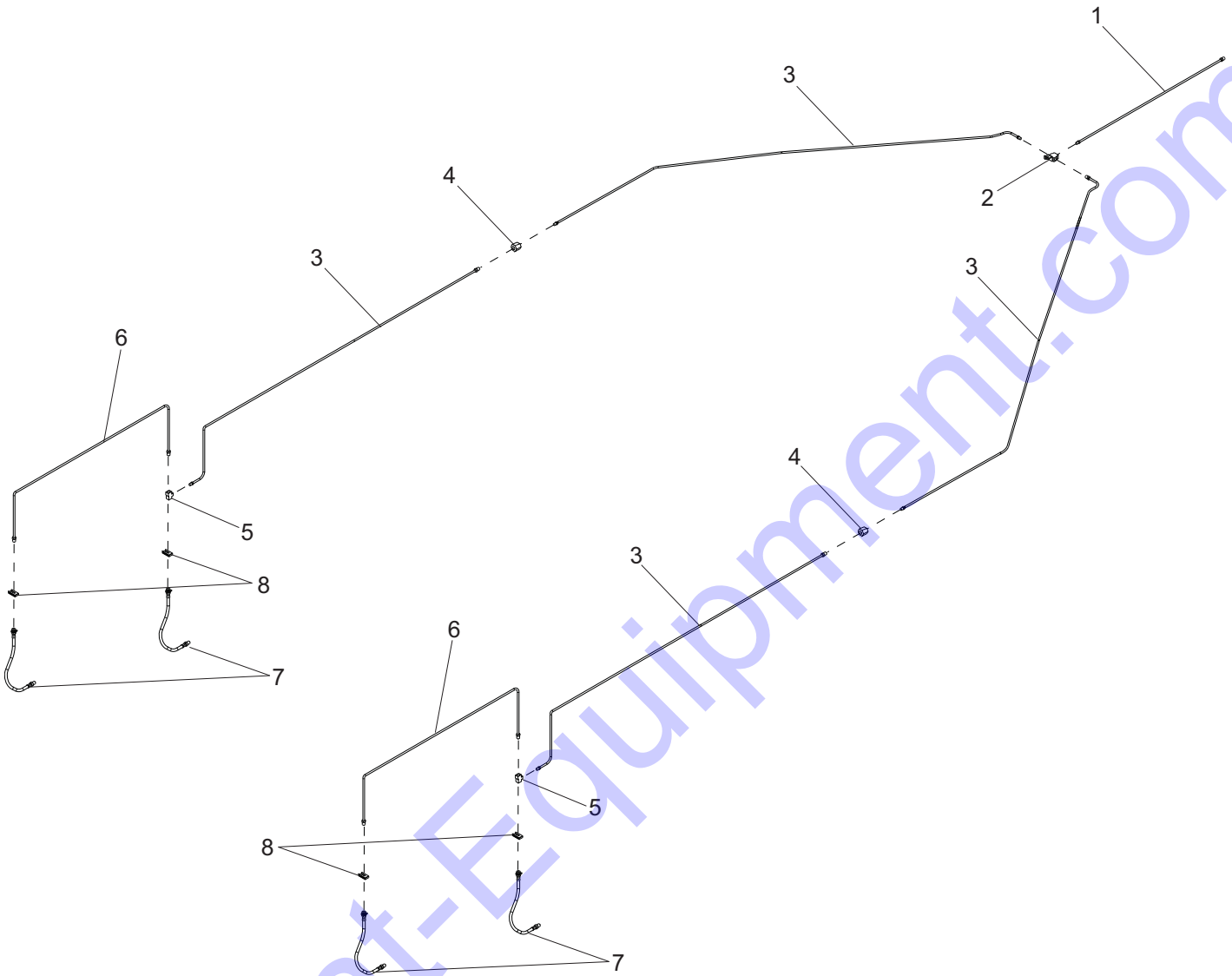
# GENERATOR ASSEMBLY



ITEM	PART	QTY	DESCRIPTION	NOTES
1	60165	8	Screw, M8-1.25X16 std hex G10.9 LB	
2	60166	16	Washer, M8 flat ZB DIN125 hd TP200	
3	11000	1	Plate, drive - SAE 7.5	
4	11975B	2	Plate, gen adapter	
5	11524	2	Compression mount, engine	
6	60275	2	Screw, .500-13X1.000 hx hd G5	
7	60702	2	Washer, .500 split lock SS	
8	60065	4	Screw, M12-1.75X40 sflg hex G10.8 LB	
9	60204	4	Washer, .500 split lock lb hvy	
10	60013	4	Nut, M12-1.75 hex G8.8 LB DIN934	
11	22899	1	Generator, 282NSL1505	

**Note:** Engine and generator parts used in all Magnum Power Products LLC equipment carry the Original Equipment Manufacturer (OEM) warranty unless otherwise stated. OEM warranty parts must be purchased through an OEM dealer.

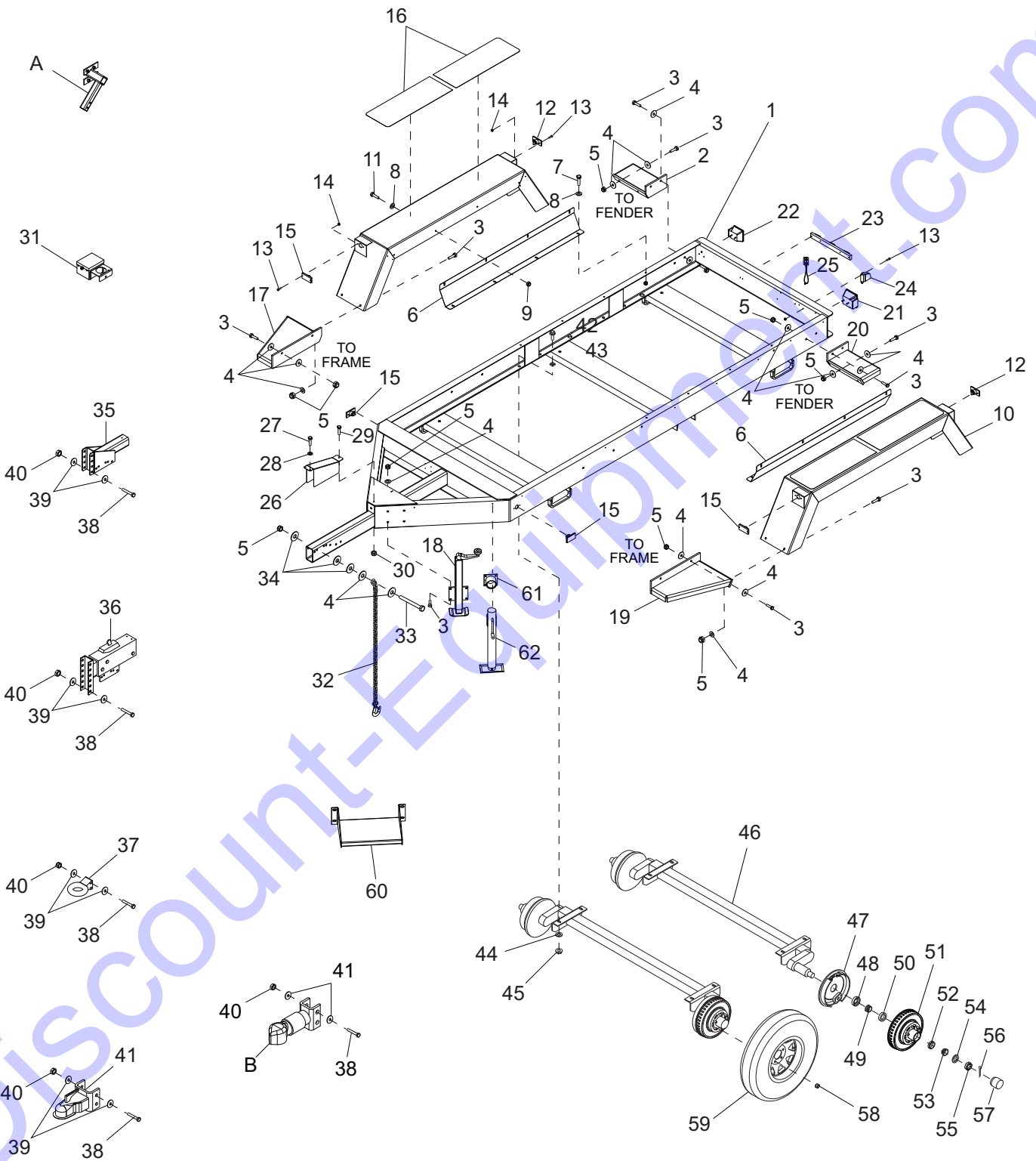
# TRAILER BRAKE LINES



ITEM	PART	QTY	DESCRIPTION	NOTES
1	40495	1	Brake line, 3/16 x 20"	
2	19252	1	Fitting, T w/bracket	
3	22338	4	Brake line, 3/16 x 60"	
4	22339	2	Connector, brake line	
5	40498	2	Fitting, T	
6	40493	2	Brake line, 3/16 x 40"	
7	40497	4	Hose, brake	
8	40499	4	Clip, brake hose	

# TRAILER ASSEMBLY

Units built before sn: 1040436

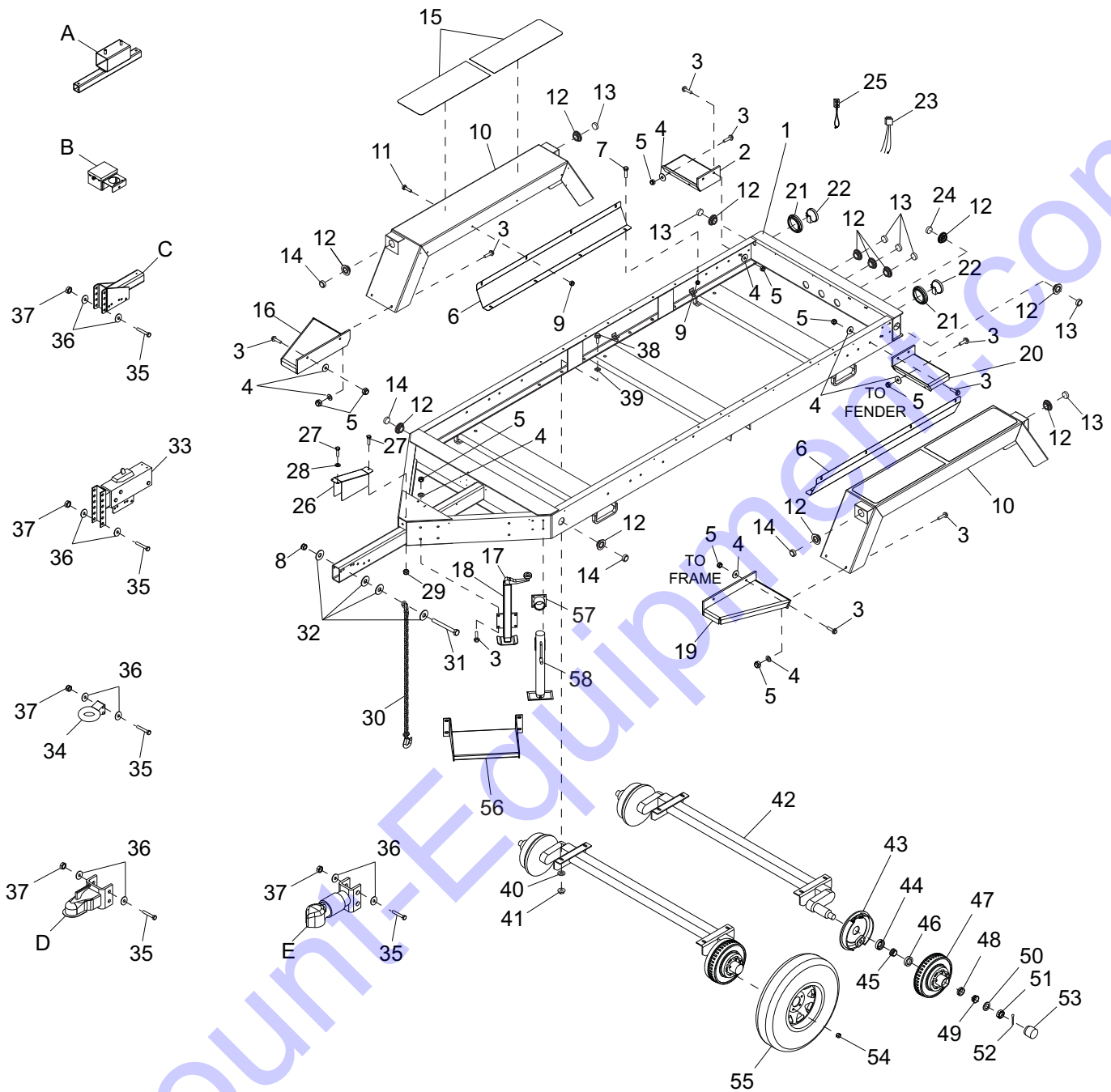


ITEM	PART	QTY	DESCRIPTION	NOTES
1	21887B	1	Weldment, trailer frame	
2	22358B	1	Weldment, rear step RH	
3	60481	20	Screw, .500-13X1.750 hx hd	
4	60671	44	Washer, flat .500 fender	
5	60307	22	Nut, .500-13 nylock	
6	22351B	2	Fender shield, large trailer	
7	60352	8	Screw, .375-16X1.250 hx hd	
8	60386	24	Washer, flat .375	
9	60358	16	Nut, .375-16 nylock	
10	22353B	2	Weldment, fender, large trailer	
11	60052	8	Screw, .375-16X.750 hx hd	
12	65406	2	Light, clearance marker - red	
13	60277	14	Screw, 10-32X.500 pan phil	
14	60061	14	Nut, 10-32 nylock	
15	65407	4	Light, clearance marker - amber	
16	22398	4	Pad, slip resistant 10.00 x 28.00	
17	22360B	1	Weldment, front step RH	
18	22317B	1	Weldment, jack large trailers	
19	22359B	1	Weldment, front step LH	
20	22357B	1	Weldment, rear step LH	
21	65449	1	Light, stop/turn/tail - LH	
22	65448	1	Light, stop/turn/tail - RH	
23	16337	1	Light bar - 3 lights	
24	65605	1	Light, license plate - 12V	
25	10226	1	Plug, 2 wire, license light	
26	22302B	1	Cover, brake guard	
27	60684	2	Screw, .250-20X.875 std hex 18-8 SS	
28	60286	2	Washer, split lock .250	
29	60684	1	Screw, .250-20X.875 hx hd SS	
30	60144	3	Nut, .250-20 nylock	
31	19417	1	Breakaway kit	
32	20159	2	Chain, trailer safety, hi test	
33	60376	2	Screw, .500-13X4.500 hx hd	
34	60309	6	Washer, flat .500 SAE	
35	19763B	1	Weldment, hitch elec. 4 pos adj - large	
36	18373	1	Actuator, trailer	
37	19335B	1	Hitch, pintle eye (adj) - 3.00 ID	
38	60239	2	Screw, .625-11X5.000 hx hd	
39	60180	4	Washer, flat .625	
40	60240	2	Nut, .625-11 nylock	
41	19519	1	Coupler, 2.31 ball for adjustable hitch	
42	61078	8	Screw, .625-11X2.000 flg hex G8 ZB	
43	60651	8	Washer, square bevel structural .625 galv	
44	60180	8	Washer, flat .625	
45	60531	8	Nut, .625 - 11 ser flg	
46	22145	2	Axle 6000# Torflex 57" frame hyd. brake	
-	22146	2	Axle 6000# Torflex 57" frame elec. brake	
47	26571	2	Surge free-backing brake assy, left	
-	26572	2	Surge free-backing brake assy, right	
-	26573	2	Electric brake assy, left	
-	26574	2	Electric brake assy, right	
48	26575	4	Inner grease seal 2.25"	
49	26576	4	Inner hub bearing	
50	26577	4	Inner bearing cup	
51	22387	4	Drum, large trailer brake - 6000# axle	
52	26584	4	Outer bearing cup	
53	26585	4	Outer hub bearing	
54	26581	4	Spindle washer	
55	12308	4	Spindle nut	
56	26583	4	Spindle nut - cotter pin	
57	26586	4	Dust cap	
58	60096	24	Nut, wheel lug	
59	20374	4	Wheel, 750-16 LTE	
60	13718B	1	Weldment, step	
61	11965Z	4	Weldment, jack adapter	
62	41133	4	Jack, side wind - 2000# tube mount	
A	24345B	1	Weldment, spare tire carrier	Option
B	41795	1	Coupler, 2.31" ball	Option: bulldog hitch



# TRAILER ASSEMBLY

Units built after sn: 1040436



ITEM	PART	QTY	DESCRIPTION
1	49510B	1	Weldment, trailer frame MTT
-	27655B	1	Weldment, trailer frame
2	22358B	1	Weldment, rear step rh
3	61103	20	Screw, .500-13X1.750 sflg hex
4	60416	20	Washer, .500 flat 1.375/.090
5	60307	20	Nut, .500-13 nylock
6	22351B	2	Fender shield, large trailer
7	60191	8	Screw, M16-2.00X90 std hex G10.9
8	60668	2	Nut, .500-13 nylk G8
9	60095	16	Nut, .312-18 sflg case hard
10	27657B	2	Weldment, fender
11	61091	8	Screw, .312-18X1.000 sflg hex G5
12	66394	12	Grommet, 2.0"

## NOTES

W/pump on rear frame channel  
W/pump inside rear frame rail

ITEM	PART	QTY	DESCRIPTION	NOTES
13	66397	7	Light, clearance - 2.0" red	
14	66396	4	Light, clearance - 2.0" amber	
15	22398	4	Pad, slip resistant 10" x 28"	
16	22360B	1	Weldment, front step rh	
17	22892	1	Jack, top wind - 5000lb	Jack only
18	22317B	1	Weldment, jack	Includes item 17
19	22359B	1	Weldment, front step lh	
20	22357B	1	Weldment, rear step lh	
21	10221	2	Grommet, 4.5"	
22	10220	2	Light, 4.0" red tail/turn	
23	10222	2	Plug, 3 wire	For tail/turn lights
24	66395	1	Light, utility 2.0"	
25	10226	12	Plug, 2 wire	For clearance lights
26	22302B	1	Cover, brake guard	
27	60684	3	Screw, .250-20X.875 std hex	
28	60286	2	Washer, split lock .250	
29	60144	1	Nut, .250-20 nylock	
30	20159	2	Chain, trailer safety	
31	61099	2	Screw, .500-13X5.00 std hex G8	
32	60671	8	Washer, flat .500 SAE	
33	18373	1	Actuator, trailer	
34	19335B	1	Hitch, pintle eye (adj) - 3" ID	
35	60239	2	Screw, .625-11X5.000 hx	
36	60180	4	Washer, flat .625	
37	60240	2	Nut, .625-11 nylock	
38	61078	8	Screw, .625-11X2.00 flg hex	
39	60651	8	Washer, sqr. bevel structural	.625 galvanized
40	60180	8	Washer, flat .625	
41	60531	8	Nut, .625 - 11 ser flg	
42	22145	2	Axle 6000# - 57" frame	Hydraulic brake
--	22146	2	Axle 6000# - 57" frame	Option: electric brake
43	26571	2	Surge free-backing brake	Left
--	26572	2	Surge free-backing brake	Right
--	26573	2	Electric brake assy	Option: left
--	26574	2	Electric brake assy	Option: right
44	26575	4	Inner grease seal 2.25"	
45	26576	4	Inner hub bearing	
46	26577	4	Inner bearing cup	
47	22387	4	Drum, large trailer brake	6000# axle
48	26584	4	Outer bearing cup	
49	26585	4	Outer hub bearing	
50	26581	4	Spindle washer	
51	12308	4	Spindle nut	
52	26583	4	Spindle nut - cotter pin	
53	26586	4	Dust cap	
54	60096	24	Nut, wheel lug	
55	20374	4	Wheel, 750-16 LTE	
56	13718B	1	Weldment, step	
57	11965Z	4	Weldment, jack adapter	
58	41133	4	Jack, side wind - 2000# tube mount	
--	27451	1	Decal, reflective tape kit	Not shown: white
--	27452	27.7ft.	Tape, conspicuity -2"	Not shown: red/white
--	27671	1	Harness, trailer	Not shown
A	24345B	1	Weldment, spare tire carrier	Option
B	19417	1	Breakaway kit	Option
C	19763B	1	Weldment, hitch elec.	Option: 4-pos adjustable
D	19519	1	Coupler, 2.31" ball	Option: adjustable hitch
E	41795	1	Coupler, 2.31" ball	Option: bulldog hitch

# **Discount Equipment**

Discount-Equipment.com is your online resource for commercial and industrial quality parts and equipment sales.

## **Locations:**

Florida (West Palm Beach): [561-964-4949](tel:561-964-4949)

Outside Florida TOLL FREE: [877-690-3101](tel:877-690-3101)

**Need parts?** Check out our website at [www.discount-equipment.com](http://www.discount-equipment.com)

## **Can't find what you need?**

Click on this link: <http://www.discount-equipment.com/category/5443-parts/> and fill out the request form.

Please have the machine model and serial number available in order to help us get you the correct parts. One of our experienced staff members will get back to you with a quote for the right part that your machine needs.

We sell worldwide for the brands: Genie, Terex, JLG, MultiQuip, Mayco, Toro/Stone, Diamond Products, Magnum, Airman, Mustang, Power Blanket, Nifty Lift, Atlas Copco, Chicago Pneumatic, Allmand Brothers, Essick, Miller Spreader, Skyjack, Lull, Skytrak, Tsurumi, Husquvarna/Target, Whiteman-Concrete/Mortar, Stow-Concrete/Mortar, Baldor, Wacker, Sakai, Snorkel, Upright, Mi-T-M, Sullair, Neal, Basic, Dynapac, MBW, Weber, Bartell, Bennar Newman, Haulotte, Ditch Runner, Blaw-Knox, Himoina, Best, Buddy, Crown, Edco, Wyco, Bomag, Laymor, Terremite, Barreto, EZ Trench, Takeuchi, Basic, Bil-Jax, Curtis, Gehl, Heli, Honda, ICS/PowerGrit, Puckett, Waldon, ASV, IHI, Partner, Imer, Clipper, MMD, Koshin, Rice, Gorman Rupp, CH&E, Cat Pumps, Comet, General Pump, Giant, AMida, Coleman, NAC, Gradall, Square Shooter, Kent, Stanley, Tamco, Toku, Hatz, Kohler, Robin, Wisconsin, Northrock, Oztec, Toker TK, Rol-Air, Small Line, Wanco, Yanmar

**New Equipment - Used Equipment - Rental Equipment - Parts and Accessories**

# **Discount Equipment**

**[www.discount-equipment.com](http://www.discount-equipment.com)**

**561-964-4949**

Sales: [info@Discount-Equipment.com](mailto:info@Discount-Equipment.com)

Parts: [wbparts@Discount-Equipment.com](mailto:wbparts@Discount-Equipment.com)



[www.discount-equipment.com](http://www.discount-equipment.com)

REV: ORG  
PART NO: 13962  
11.02.11