



OPERATING WEIGHT	15,820 lbs (7,191 kg)
NET ENGINE POWER	75/86 hp (SAE J 1349) (56/64 kW)
DIG DEPTH (STD)	14' 8" (4.5 m)
DIG DEPTH (EXT)	19' 3" (5.9 m)



TX750/760 TRACTOR LOADER BACKHOE



Flow compensated, closed-center control valve on the backhoe provides unmatched controllability

Narrow backhoe boom provides better visibility into the trench

Wide stabilizer spread increases stability when operating to the side

Single, center mounted loader dump cylinder has fewer wear points

Tilt up hood and grill provides excellent serviceability

Dry, wear compensated extendable dipperstick requires less maintenance

ENGINE

Manufacturer, model	PERKINS, Model 1 1004-40 T	
	TX750	TX760
Induction	Norm asp	Turbo
Gross power rating @ 2,200 rpm (SAE J 1349)	75 hp (56 kW)	86 hp (64 kW)
Net power rating @ 2,200 rpm (SAE J 1349)	69 hp (52 kW)	80 hp (60 kW)
Net torque @ 1,400 rpm (SAE J 1349)	212 lbf (287 Nm)	254 lbf (345 Nm)
Displacement	258 in ³ (4.2 L)	244 in ³ (3.9 L)

High torque back-up for lugging ability. High power-to-weight ratio. Low operating speed gives a long life. Key stop/start with thermostart. Replaceable valve seat inserts. Helical inlet ports. Self-priming fuel injection system. Two-stage dry air cleaner. FASTRAM combustion system ensures quick starting, fuel economy and minimizes exhaust emissions.

ELECTRICAL SYSTEM

Alternator (95 amps on AC units)	70 A
Battery (Single)	770 CCA, 115 amp/hr - 12 V
Battery (Double)	590 CCA - each, 72 amp/hr - 12 V

Battery step-mounted for good access. Low maintenance battery. Connectors sealed against water and dust. 33 circuit fuses. 25 circuit relays.

TRANSMISSION & GROUND SPEEDS

TURNER transmission. 4-speed synchro shuttle gearbox. Single-stage torque converter with 2.87:1 stall ratio. High transport speed reduces highway travel times. High tractive effort in first and second gears for high loader performance. Modulated forward and reverse clutch packs enable smooth direction changes. TX750 with 2WD standard and 4WD optional. Front console switch allows effortless engagement of 4WD on the move.

Tires: front	11Lx16 12 ply front tires	12.5/80x18 10 ply front tires
rear	16.9x28 10 ply rear tires:	19.5Lx24 10 ply rear tires

		TX750		TX760	
Travel speeds					
Forward Gear					
	1	3.3 mph (5.3 km/h)	3.0 mph (4.8 km/h)		
	2	5.4 mph (8.6 km/h)	4.9 mph (7.9 km/h)		
	3	12.2 mph (19.6 km/h)	11.2 mph (18.0 km/h)		
	4	24.6 mph (39.4 km/h)	22.5 mph (36.2 km/h)		

TURNING CIRCLE

	Over tires		Over bucket	
Without brakes	26' 11" (8.2 m)		35' 9" (10.9 m)	
With brakes	21' 4" (6.5 m)		31' 10" (9.7 m)	

Depending on tire size

AXLES

	Front		Rear	
Static loading rating	28,300 lbs (12,863 kg)		32,498 lbs (14,772 kg)	
SAE J 43	17,570 lbs (7,986 kg)		15,153 lbs (6,888 kg)	

Outboard planetary final drives for easier servicing. Foot-actuated differential lock for ease of operation. 16° front axle oscillation to maintain maximum ground contact and traction.

BRAKES

High capacity long life sealed wet disk brakes. Self-equilizing and self-adjusting. Friction area per brake assembly 113 in² (728 cm²). Selectable 2 or 4 wheel braking.

FLUID CAPACITIES

Fuel tank	31.7 gal (120 L)
Engine coolant	4.2 gal (16 L)
Engine oil (including filter)	2.8 gal (10.7 L)
Transmission	4.0 gal (15 L)
Rear axle (4WD)	4.6 gal (17.5 L)
Front axle (4WD)	3.3 gal (12.5 L)
Hydraulic system	23.8 gal (90 L)

HYDRAULIC SYSTEM

Main pump @ 2,200 rpm	21 gpm (80 Lpm)
Secondary pump @ 2,200 rpm	16.5 gpm (62 Lpm)
System main relief setting	3,250 psi (225 bar)
Unloader settings	3,000 psi (207 bar)

Closed center-load sensing flow sharing system. Twin gear pumps for reliability. Power Boost to match digging power and speed to application. Automatic or manually activated to give more precise control as required. Single pedal operation of auxiliary circuit and extending dipper (opt). Hydraulic oil cooler reduces operating temperatures. Hydraulic tank and filter easily accessed from ground level. COMMERCIAL hydraulic pumps. HUSCO hydraulic valves. PACOMA hydraulic cylinders.

CAB

TIM cab. Wide opening door with self cleaning steps and large grab rails. Large windows, lowline curved hood and full depth rear window enhance all around visibility. Door windows can be partially or fully opened for ventilation. Raised rear window provides ventilation and protection from the rain. Backlit, touch-operated switches. Adjustable tilt steering wheel. Two front and rear defrosting vents. Powerful 3 speed heater with two forward and three rear vents. Adjustable rear working lights. Noise emission ambient L_{WA} 78 dB (A) A/C option available.

WEIGHT CONFIGURATIONS

Total machine weight	15,820 lb (7,191 kg)
Add/delete the following weights to the base machine:	
7-in-1 Multi-Purpose*	+ 860 lb (391 kg)
7-in-1 Multi-Purpose Fork Kit **	+ 355 lb (161 kg)
Deep Dig Dipper	+ 427 lb (194 kg)
ROPS Frame	- 287 lb (130 kg)
2 WD	- 727 lb (330 kg)

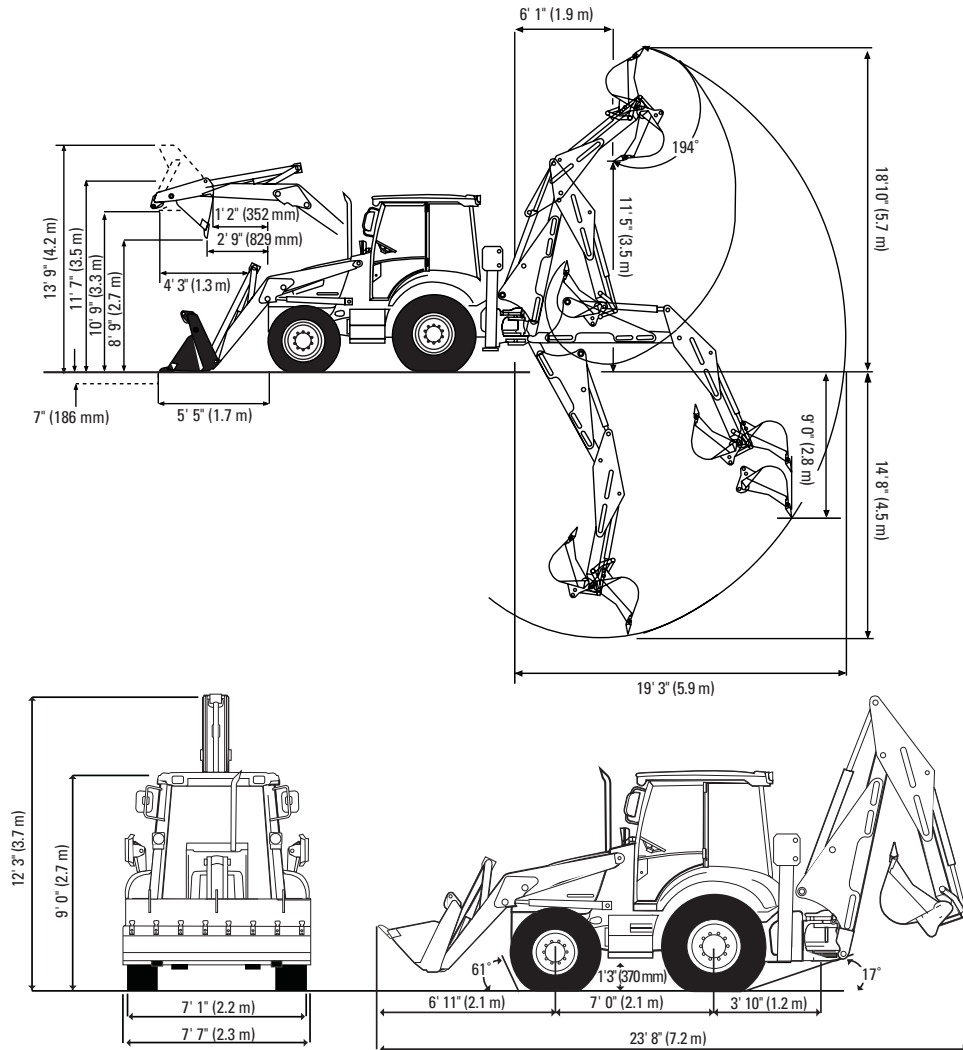
LOADER DIMENSIONS

	Standard Bucket	7-in-1 Bucket
Dump clearance at 45°	8' 9" (2.68 m)	8' 9" (2.68 m)
Dump height (fully dumped)	8' 6" (2.56 m)	8' 6" (2.60 m)
Loadover height	10' 9" (3.28 m)	10' 9" (3.28 m)
Hinge pin height	11' 7" (3.52 m)	11' 7" (3.52 m)
Pin forward reach	1' 2" (352 mm)	1' 2" (352 mm)
Reach at ground	5' 5" (1.65 m)	5' 5" (1.65 m)
Max. reach at full height	4' 3" (1.28 m)	4' 3" (1.28 m)
Reach at full height - 45°	2' 9" (829 mm)	2' 9" (829 mm)
Reach at full height fully dumped	2' 1" (645 mm)	2' 1" (645 mm)
Dig depth	7" (186 mm)	7" (186 mm)
Rollback at ground	45°	45°
Max dump angle	57°	57°
Overall operating height	13' 9" (4.20 m)	13' 11" (4.25 m)

LOADER PERFORMANCE

	Standard Bucket	7-in-1 Bucket
Bucket breakout	10,485 lbf (4,756 kgf)	10,097 lbf (4,580 kgf)
Arms breakout	10,329 lbf (4,685 kgf)	9,579 lbf (4,345 kgf)
Lift capacity to full height	7,604 lbf (3,449 kgf)	6,742 lbf (3,058 kgf)

TX750/760 LOADER



BACKHOE DIMENSIONS

	Standard Dipper	Deep Dig Dipper (Ret.)	Deep Dig Dipper (Ext.)
Dig depth			
SAE	14' 8" (4.46 m)	14' 8" (4.46 m)	19' 3" (5.86 m)
2 ft flat bottom SAE	14' 7" (4.45 m)	14' 7" (4.45 m)	19' 0" (5.80 m)
Reach ground level to swing post	19' 3" (5.87 m)	19' 3" (5.87 m)	23' 5" (7.14 m)
Loading reach	6' 1" (1.86 m)	6' 1" (1.86 m)	9' 2" (2.79 m)
Operating height	18' 10" (5.75 m)	18' 10" (5.75 m)	22' 1" (6.73 m)
Loading height SAE	11' 5" (3.48 m)	11' 5" (3.48 m)	14' 8" (4.46 m)
Max load height	12' 3" (3.74 m)	12' 3" (3.74 m)	15' 6" (4.72 m)
Maximum straight wall dig depth	9' 0" (2.75 m)	9' 0" (2.75 m)	13' 6" (4.11 m)
Bucket rotation			
Speed	194°	194°	194°
Power	163°	163°	163°
Side reach from stabilizers	12' 10" (3.91 m)	12' 10" (3.91 m)	17' 0" (5.18 m)
Stabilizer spread	11' 3" (3.43 m)	11' 3" (3.43 m)	11' 3" (3.43 m)
Maximum levelling angle	15°	15°	15°

BACKHOE PERFORMANCE

	Standard Dipper	Deep Dig Dipper (Ret.)	Deep Dig Dipper (Ext.)
Swing torque	11,875 lbf•ft (16,100 Nm)	11,875 lbf•ft (16,100 Nm)	11,875 lbf•ft (16,100 Nm)
Dipper tearout	8,329 lbf (3,778 kgf)	8,329 lbf (3,778 kgf)	5,580 lbf (2,531 kgf)
Bucket tearout			
Speed	10,082 lbf (4,573 kgf)	10,082 lbf (4,573 kgf)	10,082 lbf (4,573 kgf)
Power	12,516 lbf (5,677 kgf)	12,516 lbf (5,677 kgf)	12,516 lbf (5,677 kgf)



OPERATING WEIGHT 15,820 lbs (7,191 kg)
NET ENGINE POWER 75/86 hp (SAE J 1349) (56/64 kW)
DIG DEPTH (STD) 14' 8" (4.5 m)
DIG DEPTH (EXT) 19' 3" (5.9 m)



TX750/760 TRACTOR LOADER BACKHOE

LOADER ATTACHMENTS

	Standard Bucket		7-in-1 Bucket	
Width	7' 7"	(2.31 m)	7' 7"	(2.31 m)
Capacity	1.32 yd ³	(1.0 m ³)	1.32 yd ³	(1.0 m ³)
Weight	873 lbs	(397 kg)	1,733 lbs	(788 kg)

FORKS

	Standard Bucket
Fork Length	3' 6" (1.07 m)
Section Width	3" (80 mm)
Assembly Weight	355 lbs (161 kg)
Max. Operating Height	10' 1" (3.07 m)
Reach at Ground Level	8' 11" (2.71 m)
Reach at Full Height	7' 4" (2.23 m)
S.W.L. at 20" Load Center	2,204 lbs (1,000 kg)

LIFTING PERFORMANCE

Bucket Pin HT Above/Below lbs (kg)	BOOM LIFT				DIPPER LIFT			CRANING LIFT			
	Extending				Extending			Extending			
	Ground	Std	Ret	Ext	Std	Ret	Ext	Std	Ret	Ext	
+18'	-	-	-	-	-	-	-	-	-	-	2,840 (1,288)
+16'	-	-	-	1,830 (830.1)	-	-	2,346 (1,064)	-	-	-	2,840 (1,288)
+14'	3,126 (1,418)	2,877 (1,305)	1,889 (856.8)	3,814 (1,730)	3,752 (1,418)	2,152 (976)	4,314 (1,956)	4,295 (1,948)	2,813 (1,276)		
+12'	3,212 (1,457)	2,895 (1,313)	1,975 (895.8)	3,404 (1,544)	3,131 (1,418)	1,995 (904)	3,999 (1,813)	3,909 (1,773)	2,791 (1,266)		
+10'	3,212 (1,457)	2,800 (1,270)	1,947 (883.1)	3,307 (1,500)	2,932 (1,418)	1,896 (860)	3,924 (1,779)	3,873 (1,756)	2,791 (1,266)		
+8'	3,164 (1,435)	2,760 (1,251)	1,914 (868.2)	3,466 (1,572)	3,051 (1,418)	1,995 (904)	3,955 (1,794)	3,909 (1,773)	2,892 (1,311)		
+6'	3,029 (1,373)	2,685 (1,217)	1,914 (868.2)	4,012 (1,819)	3,638 (1,418)	2,385 (1,081)	4,630 (2,100)	4,418 (2,004)	3,225 (1,462)		
+4'	2,952 (1,339)	2,579 (1,169)	1,914 (868.2)	-	-	2,914 (1,321)	-	-	3,713 (1,684)		
+2'	2,857 (1,296)	2,463 (1,117)	1,909 (865.9)	-	-	3,876 (1,758)	-	-	4,301 (1,950)		
0	2,743 (1,244)	2,425 (1,100)	1,799 (816.0)	-	-	4,398 (1,994)	-	-	4,967 (2,253)		
-2'	2,703 (1,226)	2,394 (1,085)	1,786 (810.1)	-	-	-	-	-	-	-	-
-4'	2,646 (1,200)	2,463 (1,117)	1,786 (810.1)	-	-	-	-	-	-	-	-
-6'	2,690 (1,220)	2,482 (1,125)	1,786 (810.1)	-	-	-	-	-	-	-	-
-8'	2,866 (1,300)	2,531 (1,148)	2,072 (939.8)	-	-	-	-	-	-	-	-
-10'	-	-	2,584 (1,172)	2,315 (1,050)	-	-	-	-	-	-	-

- Lift capacities shown are 87% of maximum lift force per SAE definition J31, and are not stability limited unless marked with an*.
- Figures stated apply within 90° either side of machine.
- Figures stated are determined by static tests and do not include dynamic factors.
- Figures stated are without bucket fitted.
- Boom is angled at 78° for dipper lift capacities.
- Loader bucket is on ground.
- Crane capacity determined with hydraulic boom lock-up feature selection.



- COMPACT EXCAVATORS
- WHEEL LOADERS
- TRACTOR LOADER BACKHOES
- SOIL COMPACTORS
- RIGID HAUL TRUCKS
- ARTICULATED HAUL TRUCKS
- SCRAPERS
- TELEHANDLERS

Terex
 8800 Rostin Road
 Southaven MS 38671
 662.393.1800 phone 662.393.1700 fax
 sales@terexca.com
 www.terex.com



Terex reserves the right to change specifications without notice. Illustrations shown and described may include optional equipment, accessories or product specifications which may vary from country to country, see your local agent for details.



All Parts and Service Support is U.S. Based