



# RIDE-ON TERMINATORS

## Terminator Infinity 2.0 COMPLETE MANUAL



[www.Discount-Equipment.com](http://www.Discount-Equipment.com)



# **Discount Equipment**

Discount-Equipment.com is your online resource for commercial and industrial quality parts and equipment sales.

## **Locations:**

Florida (West Palm Beach): [561-964-4949](tel:561-964-4949)

Outside Florida TOLL FREE: [877-690-3101](tel:877-690-3101)

**Need parts?** Check out our website at [www.discount-equipment.com](http://www.discount-equipment.com)

## **Can't find what you need?**

Click on this link: <http://www.discount-equipment.com/category/5443-parts/> and fill out the request form.

Please have the machine model and serial number available in order to help us get you the correct parts. One of our experienced staff members will get back to you with a quote for the right part that your machine needs.

We sell worldwide for the brands: Genie, Terex, JLG, MultiQuip, Mayco, Toro/Stone, Diamond Products, Magnum, Airman, Mustang, Power Blanket, Nifty Lift, Atlas Copco, Chicago Pneumatic, Allmand Brothers, Essick, Miller Spreader, Skyjack, Lull, Skytrak, Tsurumi, Husquvarna/Target, Whiteman-Concrete/Mortar, Stow-Concrete/Mortar, Baldor, Wacker, Sakai, Snorkel, Upright, Mi-T-M, Sullair, Neal, Basic, Dynapac, MBW, Weber, Bartell, Bennar Newman, Haulotte, Ditch Runner, Blaw-Knox, Himoina, Best, Buddy, Crown, Edco, Wyco, Bomag, Laymor, Terremite, Barreto, EZ Trench, Takeuchi, Basic, Bil-Jax, Curtis, Gehl, Heli, Honda, ICS/PowerGrit, Puckett, Waldon, ASV, IHI, Partner, Imer, Clipper, MMD, Koshin, Rice, Gorman Rupp, CH&E, Cat Pumps, Comet, General Pump, Giant, AMida, Coleman, NAC, Gradall, Square Shooter, Kent, Stanley, Tamco, Toku, Hatz, Kohler, Robin, Wisconsin, Northrock, Oztec, Toker TK, Rol-Air, Small Line, Wanco, Yanmar

**New Equipment - Used Equipment - Rental Equipment - Parts and Accessories**

# **Discount Equipment**

[www.discount-equipment.com](http://www.discount-equipment.com)

**561-964-4949**

Parts: [wbparts@Discount-Equipment.com](mailto:wbparts@Discount-Equipment.com)






Sales: [info@Discount-Equipment.com](mailto:info@Discount-Equipment.com)



www.Discount-Equipment.com

| REV. | DATE     | DESCRIPTION  | APPROVED BY: |
|------|----------|--|--------------|
| -    | 01/29/18 | Initial release; applies to machines with S/N: INF2-XXXX |              |
| 1    | 04/09/18 | Updated fasteners  |              |
| 1.2  | 07/17/18 | Updated Images, revised balloon numbering                |              |
|      |          |  |              |
|      |          |  |              |
|      |          |  |              |
|      |          |  |              |
|      |          |  |              |
|      |          |  |              |
|      |          |  |              |
|      |          |  |              |

## SAFETY PRECAUTIONS

|   |   |
|---|---|
|    | <p style="text-align: center;"><b>DANGER</b><br/><b>EXPLOSION HAZARD</b></p> <p>Never operate the machine in an explosive atmosphere, near combustible materials, or where ventilation does not clear exhaust fumes.</p>                  |
|    | <p style="text-align: center;"><b>WARNING</b><br/><b>BURN HAZARD</b></p> <p>Never come into contact with the engine or muffler when engine is operating or shortly after it is turned off. Serious burns may occur.</p>                   |
|    | <p style="text-align: center;"><b>WARNING</b><br/><b>ROTATING HAZARD</b></p> <p>Never place hands or feet inside safety guard rings. Serious injury will result from contact with rotating blades.</p>                                    |
|   | <p style="text-align: center;"><b>CAUTION</b><br/><b>MOVING PARTS</b></p> <p>Before starting the machine, ensure that all guards and safety devices are in place and functioning properly.</p>  |
|  | <p style="text-align: center;"><b>ATTENTION</b><br/><b>READ OWNER'S MANUAL</b></p> <p>Read and understand owner's manual before using this machine. Failure to follow operating instructions could result in serious injury or death.</p> |

## TABLE OF CONTENTS

|            |   |           |
|------------|---|-----------|
| <b>1.</b>  | <b><u>INTRODUCTION</u></b>  | <b>6</b>  |
| <b>2.</b>  | <b><u>ABOUT THIS MANUAL</u></b>                                     | <b>6</b>  |
| <b>3.</b>  | <b><u>IMPORTANT SAFETY INSTRUCTIONS</u></b>                         | <b>7</b>  |
| ○          | 1. SAFETY INSTRUCTIONS FOR ALL TOOLS                                | 7         |
| ○          | 2. ADDITIONAL SAFETY RULES FOR RIDING FLOOR SCRAPERS                | 8         |
| <b>4.</b>  | <b><u>GENERAL OPERATING INSTRUCTIONS FOR THE TERMINATOR®</u></b>    | <b>9</b>  |
| <b>5.</b>  | <b><u>SAFETY FEATURES</u></b>                                       | <b>9</b>  |
| ○          | 1. AUTO STOP  | 9         |
| ○          | 2. EMERGENCY STOP BUTTON  | 9         |
| ○          | 3. SAFETY INSTRUCTIONS  | 9         |
| <b>6.</b>  | <b><u>TERMINATOR® INFINITY SPECIFICATIONS</u></b>                   | <b>10</b> |
| ○          | 1. TOOLS AND SUPPLIES   | 10        |
| <b>7.</b>  | <b><u>VENTILATION REQUIREMENTS</u></b>                              | <b>10</b> |
| <b>8.</b>  | <b><u>GUARDS, WARNING NOTICES &amp; SIGNS</u></b>                   | <b>10</b> |
| <b>9.</b>  | <b><u>SERVICE INSTRUCTIONS &amp; PERSONNEL</u></b>                  | <b>11</b> |
| <b>10.</b> | <b><u>REPLACEMENT PARTS &amp; MATERIALS</u></b>                     | <b>11</b> |
| <b>11.</b> | <b><u>UNCRATING AND PREPARING THE TERMINATOR® FOR OPERATION</u></b> | <b>11</b> |
| ○          | 1. TO REMOVE THE TERMINATOR® FROM A CRATE WITH A FORKLIFT:          | 12        |
| ○          | 2. TO REMOVE THE TERMINATOR® FROM A CRATE WITHOUT A FORKLIFT:       | 12        |
| <b>12.</b> | <b><u>LOADING/UNLOADING PROCEDURES</u></b>                          | <b>12</b> |
| <b>13.</b> | <b><u>OPERATOR CONTROLS</u></b>                                     | <b>12</b> |
| ○          | 1. DRIVE/JAW CONTROLS   | 12        |
| ○          | 2. AUTO STOP  | 13        |
| ○          | 3. EMERGENCY BRAKE  | 13        |
| <b>14.</b> | <b><u>DISPLAY &amp; INDICATORS</u></b>                              | <b>13</b> |
| ○          | 1. BATTERY/HOUR METER   | 13        |
| ○          | 2. EMERGENCY STOP   | 13        |
| <b>15.</b> | <b><u>ELECTRIC MOTOR &amp; BATTERIES</u></b>                        | <b>13</b> |
| <b>16.</b> | <b><u>BLADE ASSEMBLY</u></b>  | <b>13</b> |
| <b>17.</b> | <b><u>TAKING UP FLOOR COVERINGS</u></b>                             | <b>14</b> |
| <b>18.</b> | <b><u>TRICYCLE OR CASTER WHEELBASE AND TIRES</u></b>                | <b>14</b> |
| <b>19.</b> | <b><u>BATTERY SAFETY</u></b>  | <b>14</b> |
| ○          | 1. RECEIVING THE TERMINATOR®  | 14        |

|            |  |           |
|------------|--|-----------|
| ○          | 2. LIFTING BATTERIES                     | 14        |
| ○          | 3. WEAR PROTECTIVE CLOTHING              | 15        |
| ○          | 4. IC1200 SAFETY                         | 15        |
| <b>20.</b> | <b><u>SETTING UP A CHARGING AREA</u></b> | <b>15</b> |
| ○          | 1. CONNECTING/DISCONNECTING CHARGER      | 15        |
| ○          | 2. BASIC CHARGING FACTS                  | 15        |
| <b>21.</b> | <b><u>IC1200 CHARGER INFO</u></b>        | <b>16</b> |
| ○          | 1. LEFT DISPLAY                          | 16        |
| ○          | 2. RIGHT DISPLAY                         | 16        |
| <b>22.</b> | <b><u>MAINTENANCE PROCEDURES</u></b>     | <b>16</b> |
| <b>23.</b> | <b><u>PARTS LIST</u></b>                 | <b>17</b> |
| <b>24.</b> | <b><u>WARRANTY</u></b>                   | <b>39</b> |

## **1. Introduction**

The Terminator<sup>®</sup> Carpet and Tile Removal Machine is intended for use on large demolition and asbestos abatement projects as well as smaller floor covering removal jobs. Designed and built by experienced floor covering demolition and installation experts, the machine incorporates several design features that are essential for efficient operation:

- Tricycle wheelbase and short turning radius allows for better turning ability - especially in narrow spaces.
- Jaw position and tool position adjustments allow for changing the angle of the blade for any application.
- Weight package options in the front and rear provide extra traction needed for tile and glue removal.
- Built-in forklift transportation slots allow for easy loading and unloading at job sites.

If operated and cared for as instructed in this Manual, the Terminator<sup>®</sup> provides trouble-free, safe, and efficient performance.

## **2. About This Manual**

This Manual contains the information and procedures to assist you to operate and maintain the Terminator<sup>®</sup> machine safely and correctly. Read this Manual before you operate or service the equipment.

NOTE: Throughout this Manual directional instructions (left, right, up, down, push, pull, etc.) are given from the point of view of the operator performing the action.

### 3. Important Safety Instructions



**WARNING:** When using electric tools, basic safety precautions should always be followed to reduce the risk of fire, electric shock, and personal injury, including the following: **READ ALL INSTRUCTIONS**

#### 1. Safety Instructions for All Tools

- **KEEP GUARDS IN PLACE** and in working order.
- **REMOVE ADJUSTING TOOLS AND WRENCHES.** Form habit of checking to see that keys and adjusting wrenches are removed from the Terminator® before turning tool on.
- **KEEP WORK AREA CLEAN.** Cluttered areas invite accidents.
- **KEEP CHILDREN AWAY.** All visitors should be kept a safe distance from the work area.
- **WEAR PROPPER APPAREL.** No loose clothing, gloves, neckties, rings, bracelets or other jewelry to get caught in moving parts. Non-slip footwear is recommended. Wear protective hair covering to contain long hair.
- **ALWAYS WEAR SAFETY GLASSES.** Also use a face or dust mask if operating in a dusty environment. All users and bystanders must wear eye protection that conforms to ANSI Z87.1. (CAN/CSA Z94.3)
- **MAINTAIN EQUIPMENT WITH CARE.** Keep equipment clean for best and safest performance. Follow instructions for lubrication and changing accessories.
- **DISCONNECT BATTERY** before servicing.
- **REDUCE THE RISK OF UNINTENTIONAL STARTING.** Make sure handles are centered.
- **USE RECOMMENDED ACCESSORIES.** Consult the instruction manual for recommended accessories.
- **NEVER STAND ON TOOL.** Serious injury could occur if the machine is tipped or rocked.
- **CHECK DAMAGED PARTS.** Before further use of the tool, a guard or other part that is damaged should be carefully checked to determine that it will operate properly and perform its intended function. Check for alignment of moving parts, binding of moving parts, breakage of parts, mounting and any other conditions that may affect its operation. A guard or other part that is damaged should be properly repaired or replaced. Do not use tool if switch does not turn it on and off.
- **NEVER LEAVE EQUIPMENT RUNNING UNATTENDED. TURN POWER OFF.** Don't leave equipment until it comes to a complete stop.
- **DO NOT OPERATE ELECTRIC TOOLS NEAR FLAMABLE LIQUIDS OR GASSES OR EXPLOSIVE ATMOSPHERES.** Motors in these tools may spark and ignite fumes.



## 2. Additional Safety Rules for Riding Floor Scrapers



CAUTION: FAILURE TO HEED THESE WARNINGS MAY RESULT IN SERIOUS PERSONAL INJURY OR DEATH AND SERIOUS DAMAGE TO THE TERMINATOR®.

The Terminator® is to be operated only by qualified, trained personnel.

DON'T attempt to operate the Terminator® if you are not thoroughly familiar with the operation of the Terminator®.

DON'T operate the Terminator® unless every guard, warning notice or sign is in place.

DON'T use the Terminator® on roofs or floors not designed to carry the weight of the machine.

DON'T attempt to operate on anything but the designated voltage.

DON'T wedge anything against the motor fan to hold motor shaft.

DON'T operate equipment without guards in place.

DON'T operate the Terminator® near an open flame or smoking materials

DON'T stand directly behind or in front of the Terminator® when power is enabled.

DON'T lift the hood, inspect the blade, or otherwise service or maintain the Terminator® while power is enabled.

DON'T operate the Terminator® if the top cover is open.

DON'T overreach. Keep proper footing and balance at all times.

DON'T run the machine into piles of debris, as this may cause the machine to become unstable and tip over.

DON'T sit on or stand next to, under or around the Terminator® when it is being transported in a moving vehicle, whether by itself or with other equipment.

DON'T attempt to use the Terminator® on a non-horizontal surface or turn the Terminator® around on a ramp or hill.

DON'T put your hands or feet in the blade area when the Terminator® is running.

DO turn the power off when not in use.

DO use personal safety equipment such as steel toe shoes, safety glasses, gloves, and ear plugs.

DO use gloves when changing blades and removal tools. Tools may be hot and cause burns.

DO familiarize yourself with all safety features and controls before each use.

DO use the Terminator® only for the purpose for which it was designed. Attempting to alter the Terminator® will invalidate applicable warranties and possibly damage the machine.

DO reduce speed next to walls, machinery and other objects.

DO pre-survey the floor for cracks, ditches, trenches, electrical outlets or bolts, which could catch the blade of the machine.

DO operate the Terminator® at a safe speed.

## **4. General Operating Instructions for the Terminator®**

The Terminator® is designed to remove carpet, tile and glue residue from floors.

- When removing product, position removed product so it rolls to the side of the machine or have someone on the side of the machine remove the product. NEVER WALK IN FRONT OF OR BEHIND THE TERMINATOR® WHILE IT IS RUNNING.
- Sharpen blades or dice material into narrower widths if machine slows down or seems to be struggling.
- Do not use the Terminator® within one foot of walls or stationary objects. Damage to objects may occur if the Terminator® strikes them.
- Use safe, OSHA-approved tools and methods for sharpening blades.

## **5. Safety Features**

The Terminator® is equipped with several features to help ensure your safety and the safety of workers around you.

### **1. Auto Stop**

The Terminator® has two drive levers located to the right and left of the operator seat and a jaw height lever to the left of the operator seat. The drive levers control the forward, reverse, left, and right directions of the machine; the jaw height lever raises and lowers the jaw assembly. You must push (forward) or pull (reverse) and hold the levers in position to drive the machine or move the jaw assembly in the direction desired. When you release a lever, the Terminator® or jaw automatically STOPS and will not move again until you push/pull and hold the levers again. However, these levers are not meant as brakes. Block wheels with a floor block when stopping on a ramp and use the emergency brake. Without the emergency brake the machine may roll forward or backwards on any sloping surface.

### **2. Emergency Stop Button**

To the right side of the operator seat is a red emergency stop button. This will remove power from the motor and other electronic components. **Warning!** Removing power from the Terminator® while on a hill or ramp can lead to a dangerous rollaway situation. Always engage the parking brake before disconnecting power.

### **3. Safety Instructions**

The Terminator® is designed for safe operation by trained, designated personnel. To help ensure your safety as a designated operator, read these safety instructions before you operate the equipment. Regardless of your experience with machinery, the Terminator® has unique features and systems which you need to know about and understand before you operate or service the machine.

## **6. Terminator® Infinity Specifications**

| <b>Element</b>                  | <b>English</b> | <b>Metric</b>   |
|---------------------------------|----------------|-----------------|
| Length                          | 66"            | 1676 mm         |
| Width                           | 26.5"          | 673 mm          |
| Height                          | 47"            | 1194 mm         |
| Weight                          | 2430 lbs       | 1105 kg         |
| Tires (OD x W)                  | 15" x 8"       | 381 mm x 203 mm |
| Motor Voltage                   | 48 VDC         |                 |
| Motor Power                     | 4 HP           | 3 kW            |
| Batteries                       | 6 VDC 400 Ah   |                 |
| Motor Operating Speed           | 0-3000 RPM     |                 |
| Hydraulic Oil Type              | ISO 46         |                 |
| Hydraulic Oil Capacity          | 11 Gal         | 41.6 L          |
| Hydraulic Relief Valve Pressure | 2200 psi       | 15.17 MPa       |

### **1. Tools and Supplies**

Maintenance tools and supplies are not provided with the machine. The following are suggested items to have on the job site.

1. 4" or 7" Grinder
2. 10"-15" Crescent Wrench
3. 16-20 oz. Hammer
4. 3/8" or 1/2" Socket Set
5. Grease Gun
6. WD 40
7. 3/4" Open End and Box Wrench
8. Screw Driver Set
9. Safety Glasses
10. Ear Plugs

## **7. Ventilation Requirements**

Charge the batteries only in well-ventilated areas. (See Battery Safety section)

## **8. Guards, Warning Notices & Signs**

The guards, warning notices and signs are placed on the Terminator® for your protection. If one of them becomes damaged or is lost, contact our Customer Service Department to order a replacement.

## **9. Service Instructions & Personnel**

Like other machinery, the Terminator® requires regular inspection and maintenance of the batteries, motor, hydraulic system and other parts. To prolong the safe and efficient operating life of the machine, clean and service it as instructed in the Maintenance section of this manual.

**Always** use trained personnel to service the equipment. **Never** allow anyone to service the equipment that has not been specifically trained to do so.

If you need help with a service or maintenance problem, contact our Customer Service Department.

## **10. Replacement Parts & Materials**

The Terminator® is designed and engineered to operate safely and efficiently with the parts and materials installed on it in our factory. To ensure the continued safe and efficient operation of the equipment, use replacement parts and materials that meet both of the following requirements:

- Innovatech must solely authorize replacement parts and materials.
- Replacement parts and materials must be identical to the items originally provided with the machine, except as authorized by Innovatech.

Never use “equivalent” or substitute parts, except as expressly authorized by Innovatech.

If you fail to adhere to these instructions, you may cause injury to yourself and/or others, cause damage to the Terminator®, and invalidate applicable warranties.

If you are in doubt about any replacement parts or materials, call our Customer Service Department for assistance.

## **11. Uncrating and Preparing the Terminator® for Operation**

When you receive the Terminator®, inspect the outside of the crate completely, to detect damage to the crate itself. If it is damaged, notify the carrier immediately and follow his/her instructions to file a claim.

Carefully uncrate the machine and inspect it for damage that may have occurred during shipping. If the shipment is damaged, notify the carrier immediately and file a claim in the normal manner.

Check packing slip for complete shipment. If shipment is incomplete, notify our Customer Service Department within 24 hours.

Remove the crate debris, set aside the blades and other packages, and prepare the Terminator® for operation:

## 1. To remove the Terminator® from a crate with a forklift:

1. Forklift slots have been provided on the sides of the Terminator® for moving the terminator with a forklift.

## 2. To remove the Terminator® from a crate without a forklift:

1. Take 2 x 4's off the edge of the crate and between the wheels.
2. Place 2 x 4's behind the crate of the rear of the machine.
3. Make a ramp with the 2 x 4's and the crate material.
4. To enable power to the Terminator®, turn the key, and twist to release the red knob.
5. Pull back the left and right handles evenly and depress the foot pedal slowly. The machine will start moving slowly backwards.
6. Ensure that both rear wheels come off the crate evenly. Failure to back off evenly could result in the machine tipping over and harm to the operator.
7. As the machine moves back, ensure that the center wheel clears the crate. If the center wheel does not clear the crate, raise the machine until the wheel clears.
8. Once the machine is on the ramp, slide it all the way to the bottom, then raise the jaw up and set the center wheel down on the ground.
9. Whenever mounting or dismounting the Terminator®, ALWAYS disable the power by pressing down on the red power knob.

## 12. Loading/Unloading Procedures

- Do not load or unload the Terminator® on uneven ground.
- Ensure ramps into moving vehicles are stable and square to the ground.
- Always turn off the Terminator® before transporting it.
- Load and unload the machine with a properly weighted forklift or lift-gate.
- Make sure all safety stops are installed on a lift-gate before loading or unloading.
- Never position yourself under/around the machine while moving it with other machinery.
- Park the machine with the jaw completely down after loading.
- Properly secure the machine with chains, tire chocks, and other necessary tie downs.
- Never ride in a moving vehicle next to a Terminator®. It may tip, causing severe injury.

## 13. Operator Controls

### 1. Drive/Jaw Controls

The drive and jaw controls (three levers) are located to the left and right of the operator seat. The drive levers (left and right) control the direction of rotation of the rear wheels. The jaw height lever (left) controls the vertical position of the jaw assembly.

- Push the left and right levers forward **together**, slowly at first, to move the machine forward.
- Pull the left and right levers back **together**, slowly at first, and hold them in position to move the machine in reverse.
- Push only the left lever forward to turn the machine to the right.
- Push only the right lever forward to turn the machine to the left.

- To adjust the jaw assembly down, push and hold jaw lever forward. To adjust the jaw assembly up, pull and hold the jaw lever back.

## 2. **Auto Stop**

When you release the drive or jaw lever, the motor continues to run but the drive or jaw motion automatically stops and will not start again until you push or pull the levers.

## 3. **Emergency Brake**

The Terminator<sup>®</sup> is supplied with an emergency brake to prevent unintended movement when left unattended. The brake handle is located to the left of the operator seat. Pull the handle up to engage the brake, push the handle down to release the brake. To increase tension on the brake you can rotate the end of the handle in a clockwise direction. Rotate the end of the handle counter clockwise to reduce the tension.

# 14. **Display & Indicators**

## 1. **Battery/Hour Meter**

The battery/hour meter displays battery life, run-time, and current voltage. At 30% battery life, the light will turn yellow. At 10% battery life, the light will be red, indicating very low battery levels and the need to charge. The text display will normally show total hours to one decimal place, and an alternate mode will display the current voltage to two decimal places. Please contact your service provider when changing the settings of your battery/hour meter.

## 2. **Emergency Stop**

In case of emergency push down the red emergency button on the right side of the seat platform to remove power from all electrical components. To restore power, turn the button to the right and it will return to its original position.

# 15. **Electric Motor & Batteries**

The electric motor and batteries are located under the top cover. The electric motor provides the power to the hydraulic pump to drive the Terminator<sup>®</sup>. The electric motor requires little maintenance, inspect wire connections and check for debris to maintain its efficiency and prolong its operating life.

# 16. **Blade Assembly**

Blades are available in different configurations and thickness. An assortment of blades is included in the purchase price of the Terminator<sup>®</sup>. Extra blades are available upon request from Innovatech Products & Equipment Co., Inc.

Installing a Blade:

1. Raise the jaw assembly to maximum up position.
2. Unwrap the pre-sharpened blades and select the blade thickness and length you need for the job.
3. Loosen the 7 holding bolts.

4. Insert the sharpened blade.
5. Tighten bolts firmly, starting from the center and working out. Bolts should be snug but not over-tightened.

## **17. Taking Up Floor Coverings**

1. Insert the blade. (See Blade Assembly)
2. Lower the jaw assembly to the floor. Lift the caster wheel off the floor 1/4 inch. Use previous procedures to drive forward.
3. As the Terminator® is removing flooring material, it is recommended to have another person at the side of the machine removing accumulating debris.

## **18. Tricycle or Caster Wheelbase and Tires**

The tricycle wheelbase is designed for a better turning ability. The wheel bearings on the front caster roller require lubrication with grease every 30 hours of machine operation. There are three fittings, two on the wheel and one on the housing. When running over debris such as carpet, the carpet yarn will get caught between the wheel and the housing. Clean out wheel and housing regularly.

The rear tires are solid rubber, tubeless, and require no maintenance. Over time, they may wear out and need replacing. Before each job, inspect the rear tires and lug bolts. Tighten the lug bolts as needed to 70 ft.-lbs. torque – it is important to keep the lug bolts tight.

The wheel hubs should be tightened from 310 to 350 ft.-lbs. Inspect and re-torque every 60 hours of operation. Lift the machine off the floor so no weight is on the wheel when re-torquing the pack nut.

## **19. Battery Safety**

### **1. Receiving the Terminator®**

After receiving the Terminator®, examine the covers and battery catch tray for signs of damage. Attention should be given to the crate and pallet of the Terminator® when it arrives for any damage that may have happened during shipment. If you see any dented or crushed housing parts contact Innovatech for procedures to repair shipping damage.

Only trained or authorized personnel should change, repair or charge batteries.

### **2. Lifting Batteries**

Always use proper lifting equipment to reduce the risk of battery damage, shorting and possible injury. An insulated lifting device used with an overhead hoist is the safest way to move a battery. Chain hoists used to handle batteries should be equipped with a non-metallic container or bucket to prevent the chains from dangling and possibly causing a short by coming in contact with exposed cell connectors on the top of the battery.

Never lift batteries by the inter-cell connecting cables, the connectors will come apart while the battery is in midair. Connectors on these cables are designed for maximum

current flow, not strength. Connect the lifting device to the negative terminal only if there is not a lifting strap in place. Lifting by both terminals could cause the negative and positive terminals to short.

### 3. **Wear Protective Clothing**

When working on or near batteries, always wear proper protective clothes including a face shield, safety glasses, long sleeved shirt, and acid-resistant gloves. Do not wear any metal jewelry including rings, as they can short circuit a battery and become extremely hot if it accidentally contacts exposed intercell connectors.

### 4. **IC1200 Safety**

The charger may become hot while in use, please use care and hand protection if the charger must be handled while charging.

## 20. **Setting up a Charging Area**

All owners of the Terminator® need to designate a charging area to charge the battery pack at the end of a workday or while storing the Terminator®, this area should have all the proper battery handling equipment.

### 1. **Connecting/Disconnecting Charger**

Always ensure the Terminator® is not running before connecting the battery charger leads. The charger sockets are located in the bottom-left corner of the front panel, near the foot rest.

It is recommended to use the charging cables provided as it is potentially dangerous to use different gauges or lengths of cable and could reduce charging capacity. If other extensions cables are to be used, they must be 3-wire cord no longer than 100 ft. (30m) at 10 AWG or 25 ft. (7.5m) at 16 AWG, per UL guidelines.

When charging both chargers at the same time, ensure they are going to their own dedicated circuits, as their combined amperage draw can reach 30A.

It is recommended to use both the primary (left inlet) and secondary (right inlet) chargers for a total of 14 hours to achieve maximum battery capacity.

Live leads can cause arcing and sparks which could cause an explosion if battery gases are present, please check that the main contactor/disconnector is not in the on condition when you connect or disconnect the battery terminal plug. In addition, the battery connector terminals will become pitted over time resulting in poor connections and increased heat generation in the battery leads and connectors.

### 2. **Basic Charging Facts**

- The Terminator® is supplied with two Delta-Q IC1200 chargers.
- When a discharged battery is initially placed on charge, it will draw a current close to the charger's maximum output. As the battery voltage rises to its rated voltage the charger output will automatically adjust to assure a safe and efficient charging rate.
- The IC1200 Charger is designed to start and stop so as not to over charge the battery pack. The computerized control unit determines when the battery is fully charged and then automatically ends the charge cycle.



## 21. IC1200 Charger Info

### 1. Left display

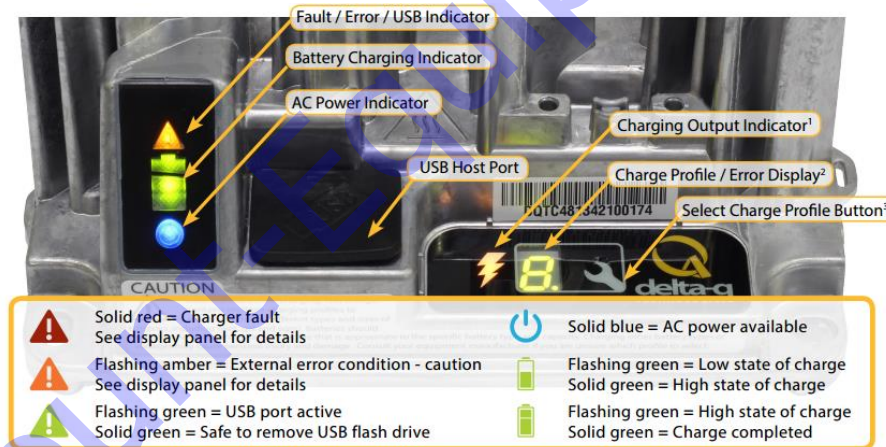
From the top to the bottom, there are three lights that function as follows:

- 1) Fault/Error Indicator: Solid Red = Charger fault  
Flashing Amber = External error  
Flashing Green = USB port active  
Solid Green = Safe to remove USB
- 2) Battery Indicator: Flashing Green (half) = Low state of charge  
Solid Green (half) = High state of charge  
Flashing Green (full) = High state of charge  
Solid Green (full) = Charge completed
- 3) AC Power Indicator: Solid Blue = AC power available

### 2. Right display

From the left to the right, there are two lights and one button that function as follows:

- 1) Charging Output Indicator: If illuminated, the charge output is active and a potential risk for electrical shock is present.
- 2) Charge Profile/Error Display: Will display one of four possible codes to indicate different failure states and aid in troubleshooting.
- 3) Select Charge Profile: Only needed when changing a charge profile on the charger. All charger profile changes should be carried out by someone with knowledge of the charger system.

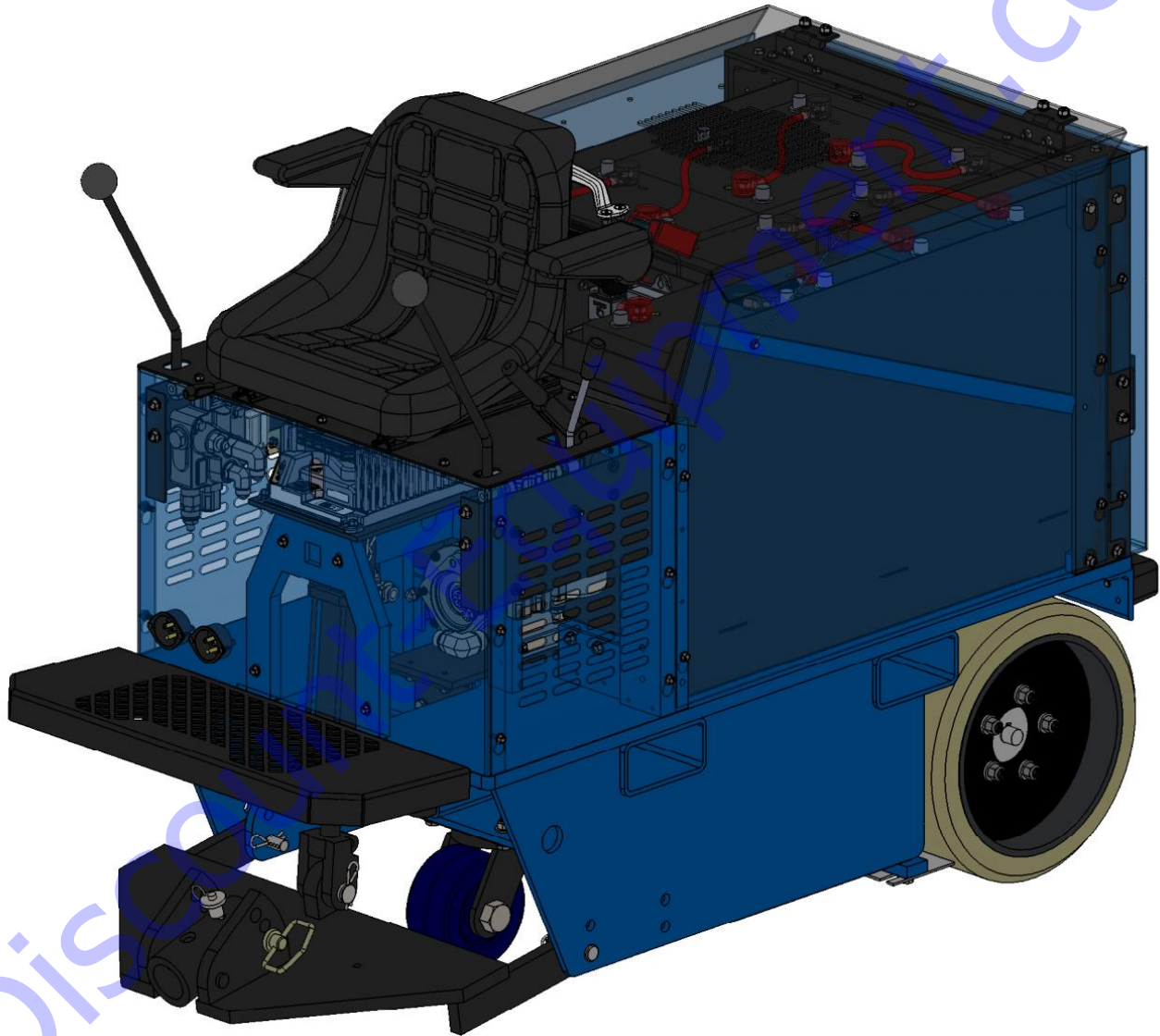


## 22. Maintenance Procedures

1. Grease Caster Wheel at three fittings every 30 hours.
2. Check Hydraulic Oil once a month. Change every 18 months with NUTO H 46 or ISO 46 or if fluid is overheated 200°F or higher.
3. Change hydraulic filter every 60 hours.
4. Clean Caster Wheel and Back Tires with wire wheel when necessary.
5. Look for leaks, find and tighten fittings. Do not over-tighten fittings.
6. Check all hoses and clamps once a week.
7. Inspect rear tires and lug bolts. Tighten lug bolts as needed to 70 ft.-lbs. torque.
8. Check wheel hub every 60 hours of operation. Wheel hub pack nut should be torqued from 310 to 350 ft.-lbs.

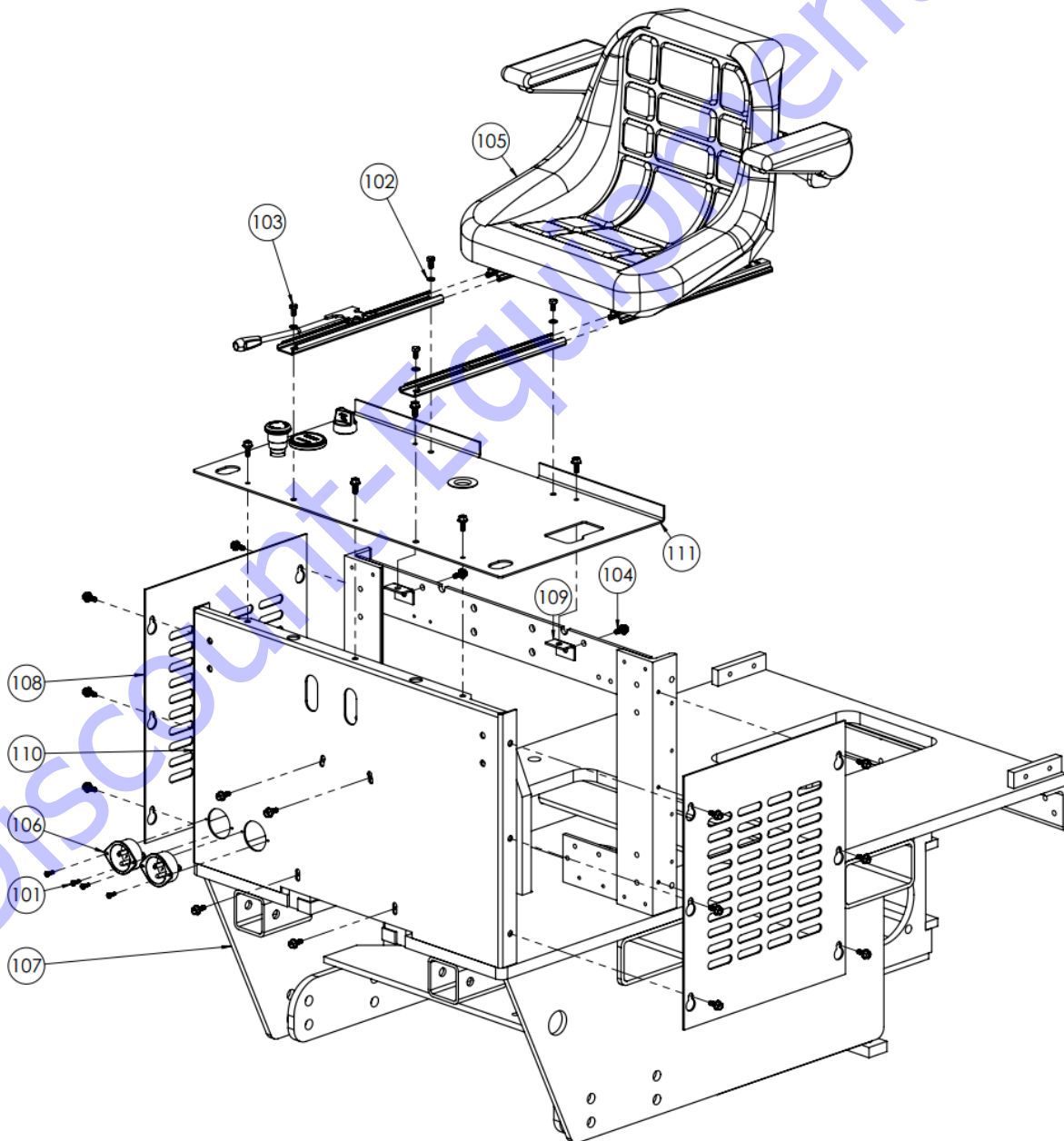
## 23. Parts List

# Terminator Infinity 2.0



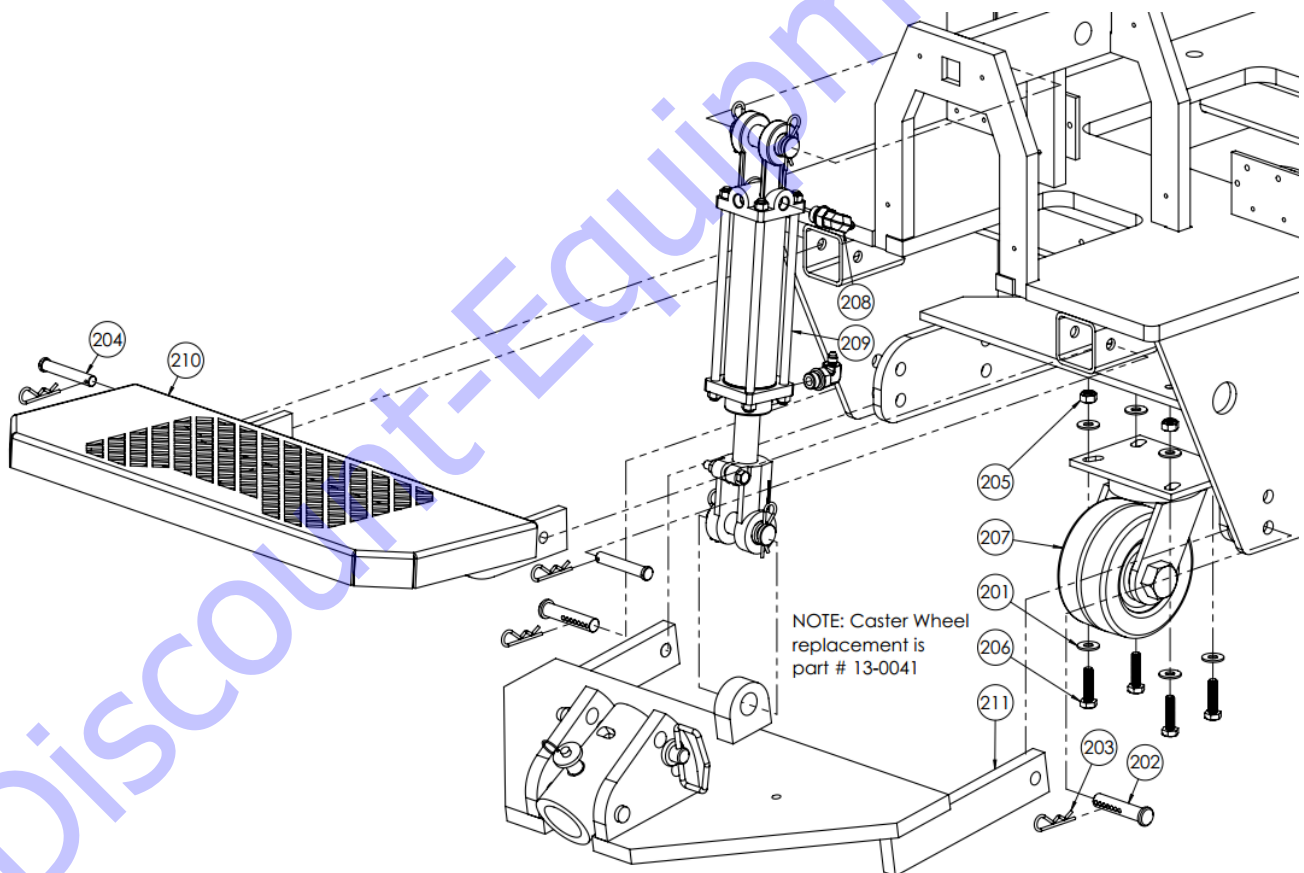
## Front Panels & Seat Breakdown

| Item No. | Part Number | Description                              | Qty. |
|----------|-------------|--|------|
| 101      | 11-0085     | Pan Head Phillips Screw, #6-32 x 1/2"    | 4    |
| 102      | 12-0018-06  | Lock Washer, M6                          | 4    |
| 103      | 12-0026     | Hex Head Cap Screw, M6-1.0 x 12mm        | 4    |
| 104      | 12-0043-16  | Serrated Flange Cap Screw, M6-1.0 x 16mm | 23   |
| 105      | 13-0257     | GT50 Seat w/ microswitch                 | 1    |
| 106      | 23-0155     | Infinity Flanged Inlet Receptacle        | 2    |
| 107      | 53-0363     | Uni-Frame Assembly                       | 1    |
| 108      | 53-0370     | Uni-Frame Front Side Panel               | 2    |
| 109      | 53-0397     | Uni-Frame Seat Mounting Bracket          | 2    |
| 110      | 53-0418     | Infinity Front Panel                     | 1    |
| 111      | 96-0389     | Infinity Seat Platform Assembly          | 1    |



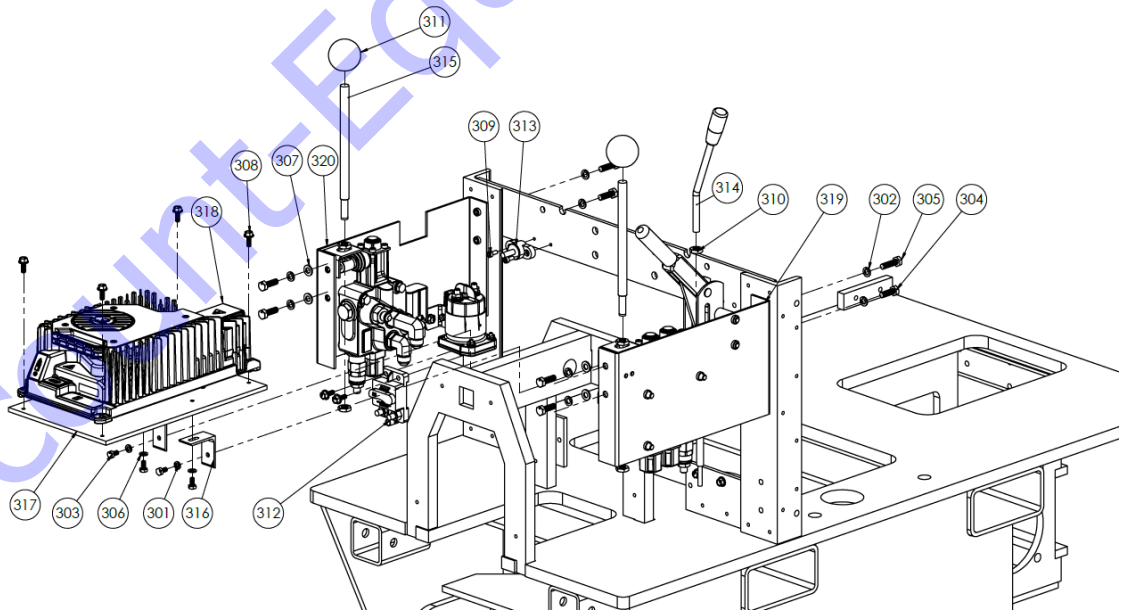
## Front Exterior Breakdown

| Item No. | Part Number | Description                             | Qty. |
|----------|-------------|---|------|
| 201      | 11-0035     | Flat Washer, 3/8"                       | 8    |
| 202      | 11-0045     | Adjustable Clevis Pin, 5/8" x 3" L      | 2    |
| 203      | 11-0052     | Hitch Pin                               | 8    |
| 204      | 11-0236     | Clevis Pin, 1/2" x 3" L                 | 2    |
| 205      | 12-0021-10  | Nyloc Nut, M10-1.5                      | 4    |
| 206      | 12-0034-40  | Hex Head Cap Screw, M10-1.5 x 40mm      | 4    |
| 207      | 13-0378     | Caster Wheel Replacement                | 1    |
| 208      | 31-0043     | Hydraulic Fitting, 90 deg 4 JIC – 8 SAE | 2    |
| 209      | 34-0015     | Hydraulic Ram (90 deg)                  | 1    |
| 210      | 53-0117     | Foot Rest, 1-piece                      | 1    |
| 211      | 96-0386     | Pivoting Jaw Assembly                   | 1    |



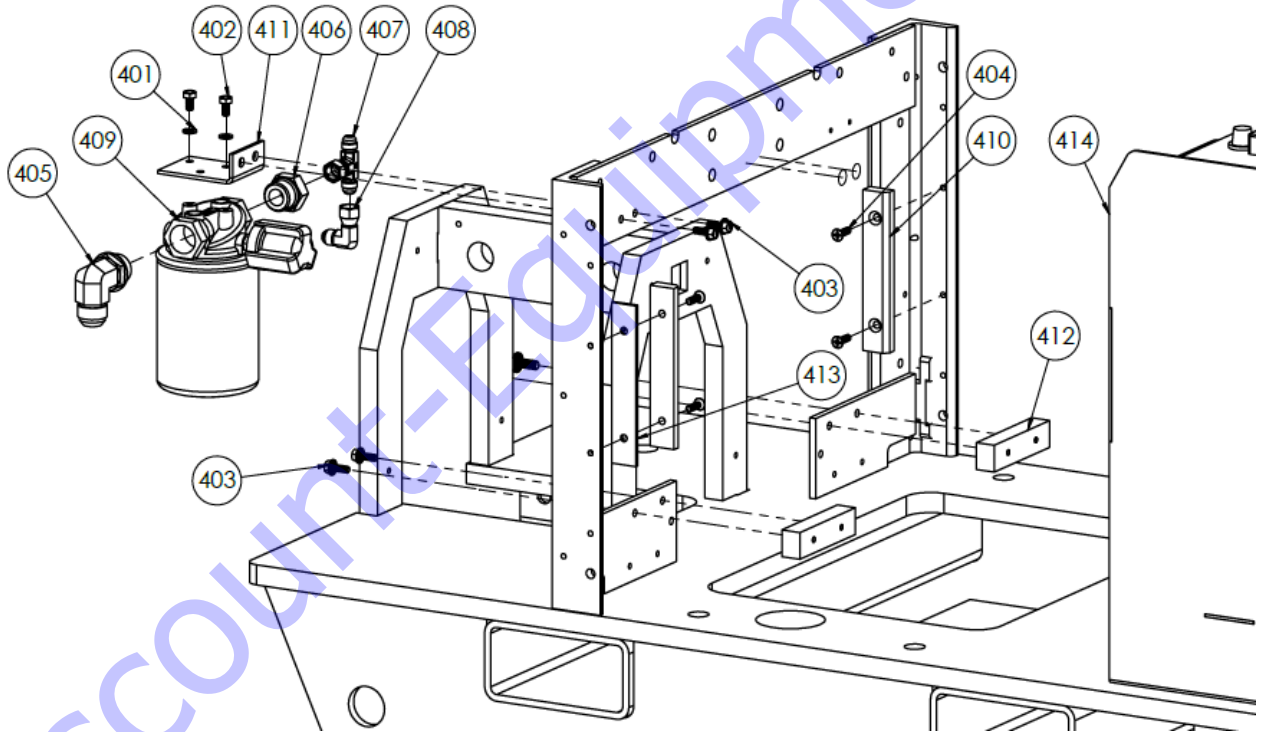
## Front Interior Breakdown

| Item No. | Part Number | Description                                     | Qty. |
|----------|-------------|---|------|
| 301      | 12-0018-06  | Lock Washer, M6                                 | 2    |
| 302      | 12-0018-08  | Lock Washer, M8                                 | 8    |
| 303      | 12-0026     | Hex Head Cap Screw, M6-1.0 x 12mm               | 4    |
| 304      | 12-0032-25  | Hex Head Cap Screw, M8-1.25 x 25mm              | 6    |
| 305      | 12-0032-30  | Hex Head Cap Screw, M8-1.25 x 30mm              | 2    |
| 306      | 12-0035-06  | Flat Washer, M6                                 | 2    |
| 307      | 12-0035-08  | Flat Washer, M8                                 | 4    |
| 308      | 12-0043-16  | Serrated Flange Cap Screw, M6-1.0 x 16mm        | 6    |
| 309      | 12-0051     | Socket Head Cap Screw, M5-0.8 x 16mm            | 2    |
| 310      | 12-0053     | Hex Jam Nut, M10-1.5                            | 5    |
| 311      | 13-0385     | Infinity Drive Lever Knob, 1/2"-13, 1 7/8" dia. | 2    |
| 312      | 23-0157     | Circuit Breaker, 80A 48V                        | 1    |
| 313      | 24-0231     | Junction Stud                                   | 1    |
| 314      | 35-0059     | Infinity Jaw Lever                              | 1    |
| 315      | 53-0427     | Infinity Drive Lever                            | 2    |
| 316      | 53-0429     | Infinity Charger Bracket                        | 2    |
| 317      | 53-0430     | Infinity Charger Mount                          | 1    |
| 318      | 81-0671     | Infinity Primary On-board Charger               | 1    |
| 319      | 96-0384     | Infinity Controls Assembly (L)                  | 1    |
| 320      | 96-0385     | Infinity Controls Assembly (R)                  | 1    |



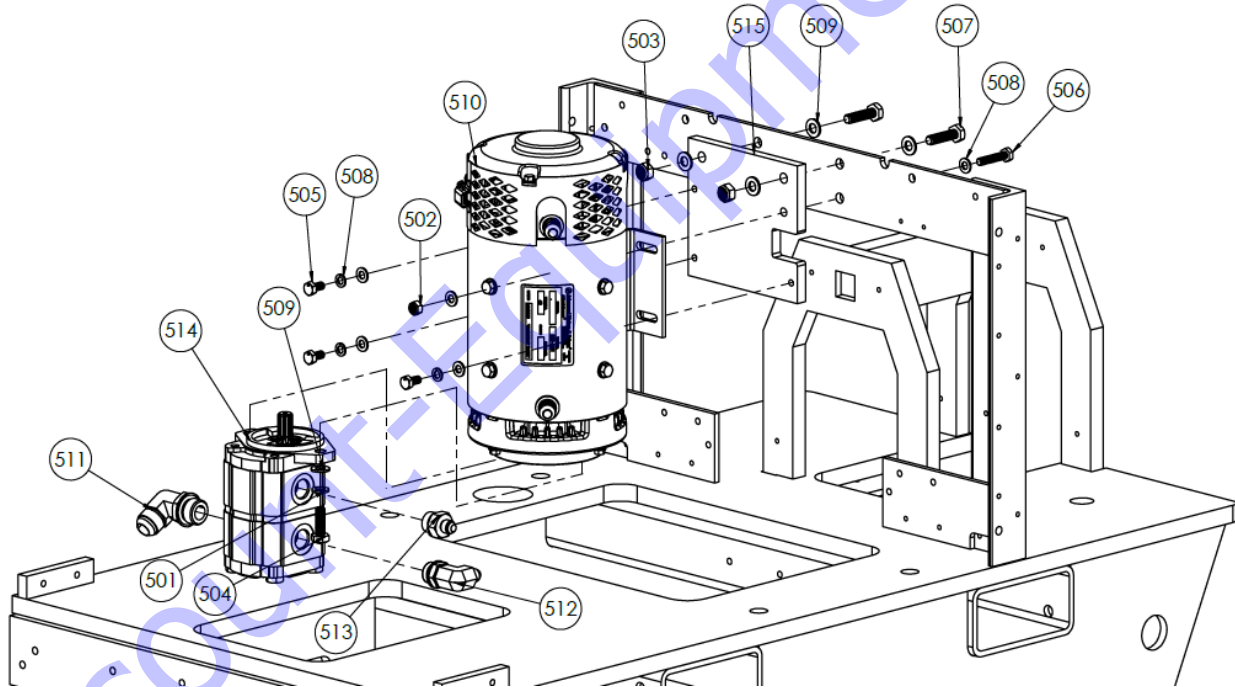
## Battery Area Breakdown

| Item No. | Part Number | Description                                  | Qty. |
|----------|-------------|--|------|
| 401      | 11-0069     | Lock Washer, 1/4"                            | 2    |
| 402      | 11-0092     | Hex Head Cap Screw, 1/4"-20 x 1/2"           | 2    |
| 403      | 12-0043-16  | Serrated Flange Cap Screw, M6-1.0 x 16mm     | 6    |
| 404      | 12-0045-20  | Flat Head Phillips Screw, M6-1.0 x 20mm      | 4    |
| 405      | 31-0051     | Hydraulic Fitting, 90 deg 12 JIC – 12 SAE    | 1    |
| 406      | 31-0282     | Hydraulic Fitting, Straight 6 JIC – 12 SAE   | 1    |
| 407      | 31-0283     | Hydraulic Fitting, Branch Tee 6 JIC – 12 SAE | 1    |
| 408      | 31-0284     | Hydraulic Fitting, 90 deg 6 JIC – 6 JIC      | 1    |
| 409      | 35-0060     | Hydraulic Oil Filter Replacement             | 1    |
| 410      | 51-1050     | Uni-Frame Battery Guide, Front               | 2    |
| 411      | 53-0398     | Uni-Frame Filter Bracket                     | 1    |
| 412      | 53-0399     | Uni-Frame Battery Stop                       | 2    |
| 413      | 53-0405     | Uni-Frame Battery Guide Spacer, Front        | 1    |
| 414      | 71-0033     | Infinity 2.0 Battery Pack, AGM 48 VDC        | 1    |



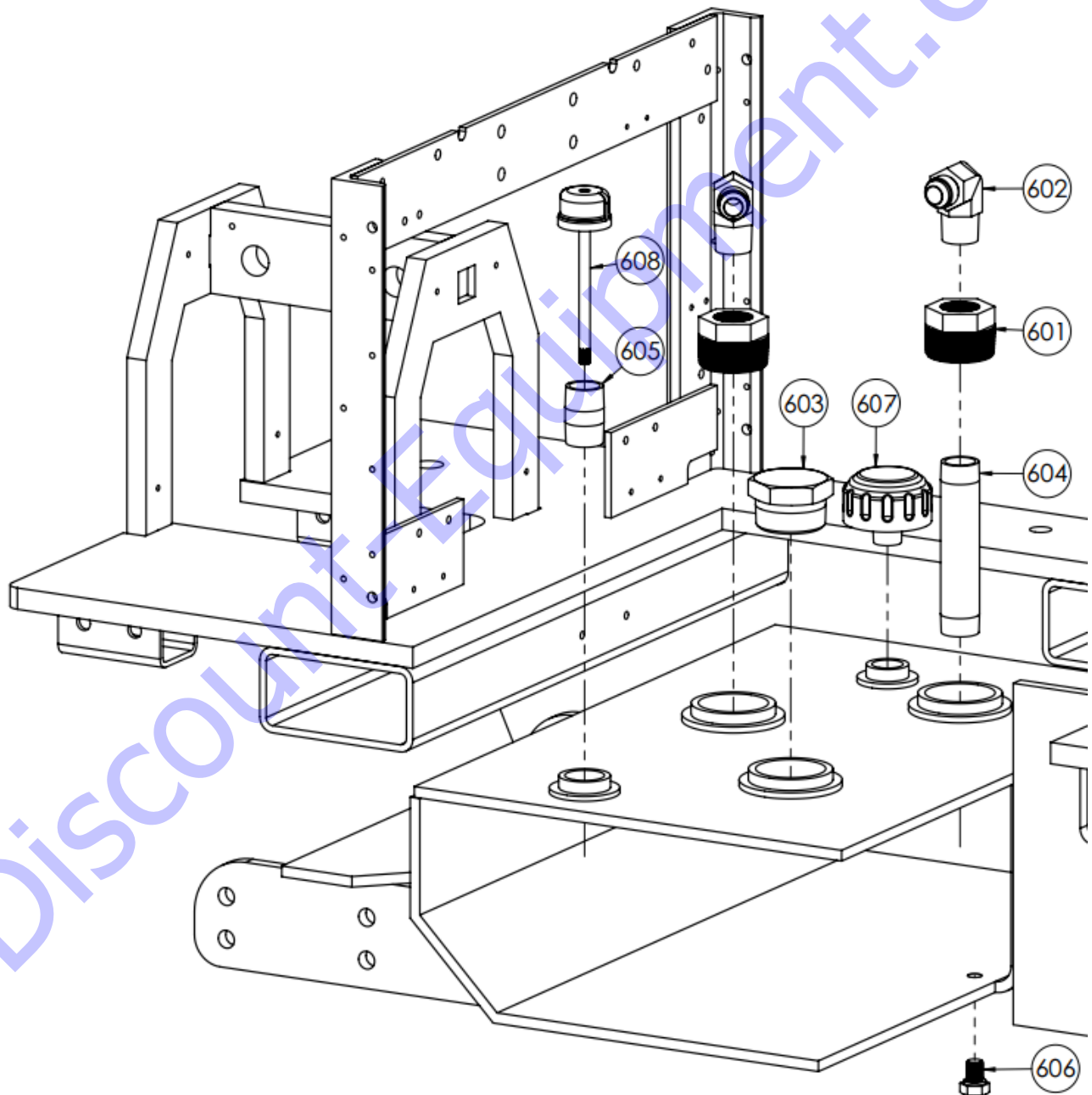
## Motor & Pump Breakdown

| Item No. | Part Number | Description                                | Qty. |
|----------|-------------|--|------|
| 501      | 12-0018-10  | Lock Washer, M10                           | 2    |
| 502      | 12-0021-08  | Nyloc Nut, M8                              | 1    |
| 503      | 12-0021-10  | Nyloc Nut, M10                             | 2    |
| 504      | 12-0024     | Hex Head Cap Screw, M10-1.5 x 30mm         | 2    |
| 505      | 12-0032-16  | Hex Head Cap Screw, M8-1.25 x 16mm         | 3    |
| 506      | 12-0032-45  | Hex Head Cap Screw, M8-1.25 x 40mm         | 1    |
| 507      | 12-0034-40  | Hex Head Cap Screw, M10-1.5 x 40mm         | 2    |
| 508      | 12-0035-08  | Flat Washer, M8                            | 5    |
| 509      | 12-0035-10  | Flat Washer, M10                           | 6    |
| 510      | 24-0160     | Infinity 2.0 Motor, 5.5HP                  | 1    |
| 511      | 31-0281     | Hydraulic Fitting, 90 deg 12 JIC – 10 SAE  | 1    |
| 512      | 31-0172     | Hydraulic Fitting, 90 deg 6 JIC – 10 SAE   | 1    |
| 513      | 31-0286     | Hydraulic Fitting, Straight 6 JIC – 10 SAE | 1    |
| 514      | 31-0290     | Infinity 2.0 Gear Pump, 6CC                | 1    |
| 515      | 53-0435     | Infinity 2.0 Motor Mount                   | 1    |



## Tank Fittings Breakdown

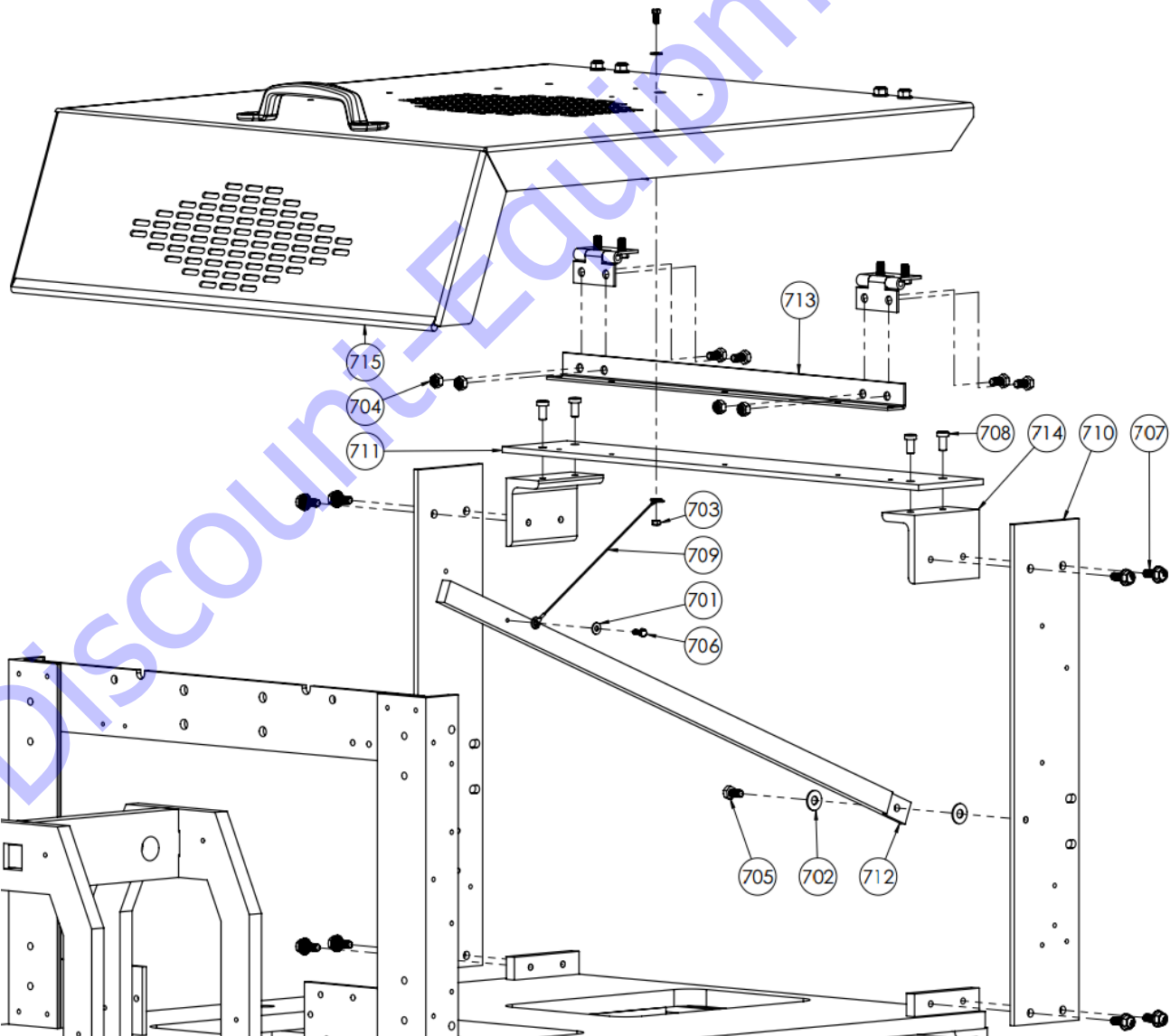
| Item No. | Part Number | Description                                     | Qty. |
|----------|-------------|---|------|
| 601      | 31-0124     | Threaded Tank Fitting, 2" Male, 1" x 1" Female  | 2    |
| 602      | 31-0128     | Hydraulic Fitting, 90 deg 12 JIC – 1" NPTF Male | 2    |
| 603      | 31-0252     | Hex Head Pipe Plug, 2" NPT                      | 1    |
| 604      | 35-0004     | Pipe Nipple, 1" NPT x 6" L                      | 1    |
| 605      | 35-0047     | Pipe Nipple, 1" NPT x 2" L                      | 1    |
| 606      | 35-0051     | Drain Plug, M14-1.5                             | 1    |
| 607      | 35-0052     | Hydraulic Breather Cap                          | 1    |
| 608      | 53-0277     | XME Dip Stick Unit                              | 1    |





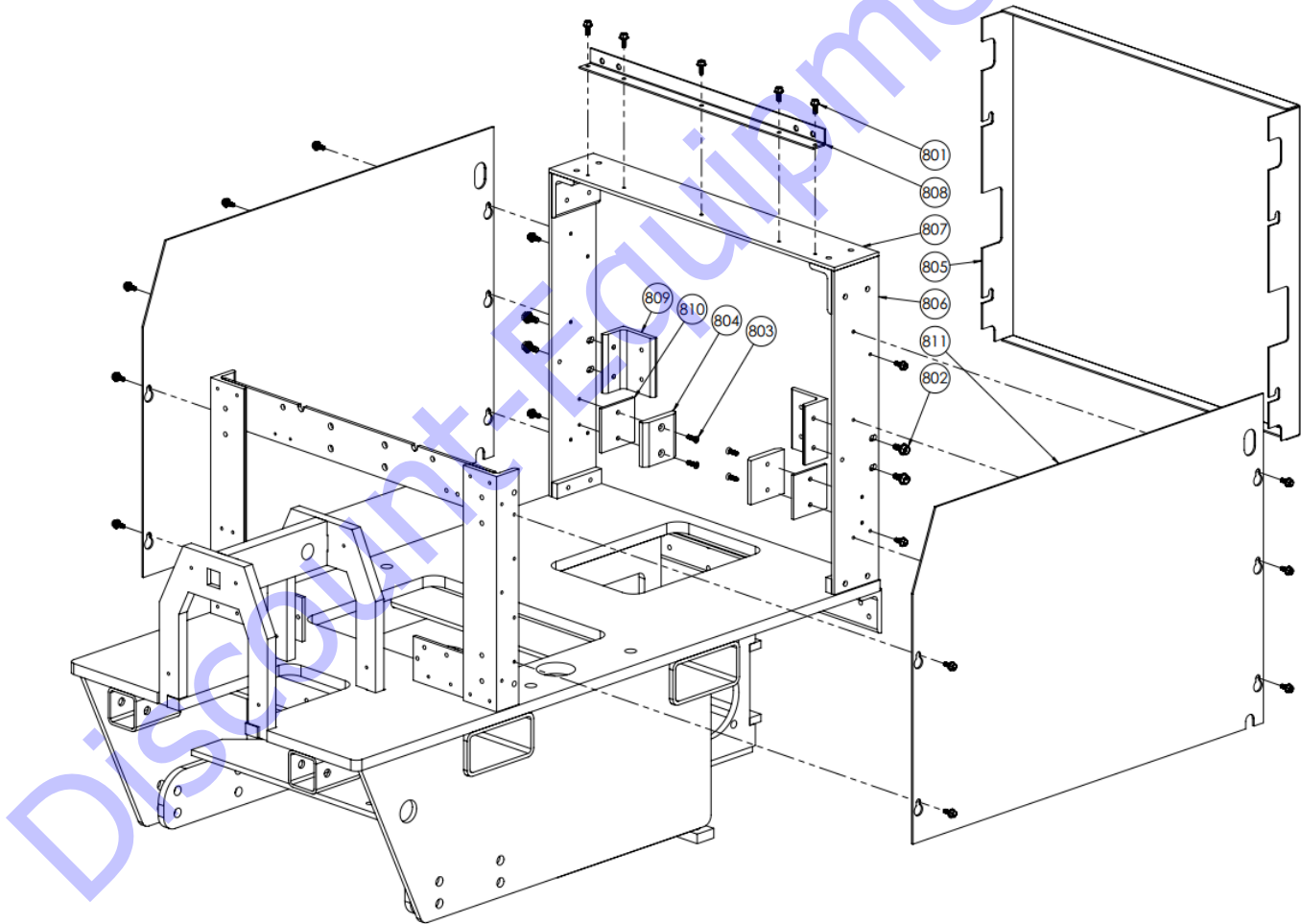
## Hood Arm Breakdown

| Item No. | Part Number | Description                          | Qty. |
|----------|-------------|--------------------------------------|------|
| 701      | 11-0030     | Flat Washer, #10                     | 4    |
| 702      | 11-0034     | Flat Washer, 5/16"                   | 2    |
| 703      | 12-0021-05  | Nyloc Nut, M5-0.8                    | 1    |
| 704      | 12-0021-08  | Nyloc Nut, M8-1.25                   | 4    |
| 705      | 12-0032-16  | Hex Head Cap Screw, M8-1.25 x 16mm   | 5    |
| 706      | 12-0041-12  | Hex Head Cap Screw, M5-0.8 x 12mm    | 2    |
| 707      | 12-0044-20  | Serrated Flange Cap Screw, M8-1.25   | 8    |
| 708      | 12-0050-16  | Low Socket Cap Screw, M8-1.25 x 16mm | 4    |
| 709      | 13-0387     | 12" Lanyard                          | 1    |
| 710      | 53-0391     | Uni-Frame Rear Side Support          | 2    |
| 711      | 53-0392     | Uni-Frame Rear Cross Support         | 1    |
| 712      | 53-0393     | Uni-Frame Hood Support               | 1    |
| 713      | 53-0394     | Top Cover Mounting Bracket           | 1    |
| 714      | 53-0395     | Uni-Frame Rear Support Bracket       | 2    |
| 715      | 96-0380     | Infinity Top Cover Assembly          | 1    |



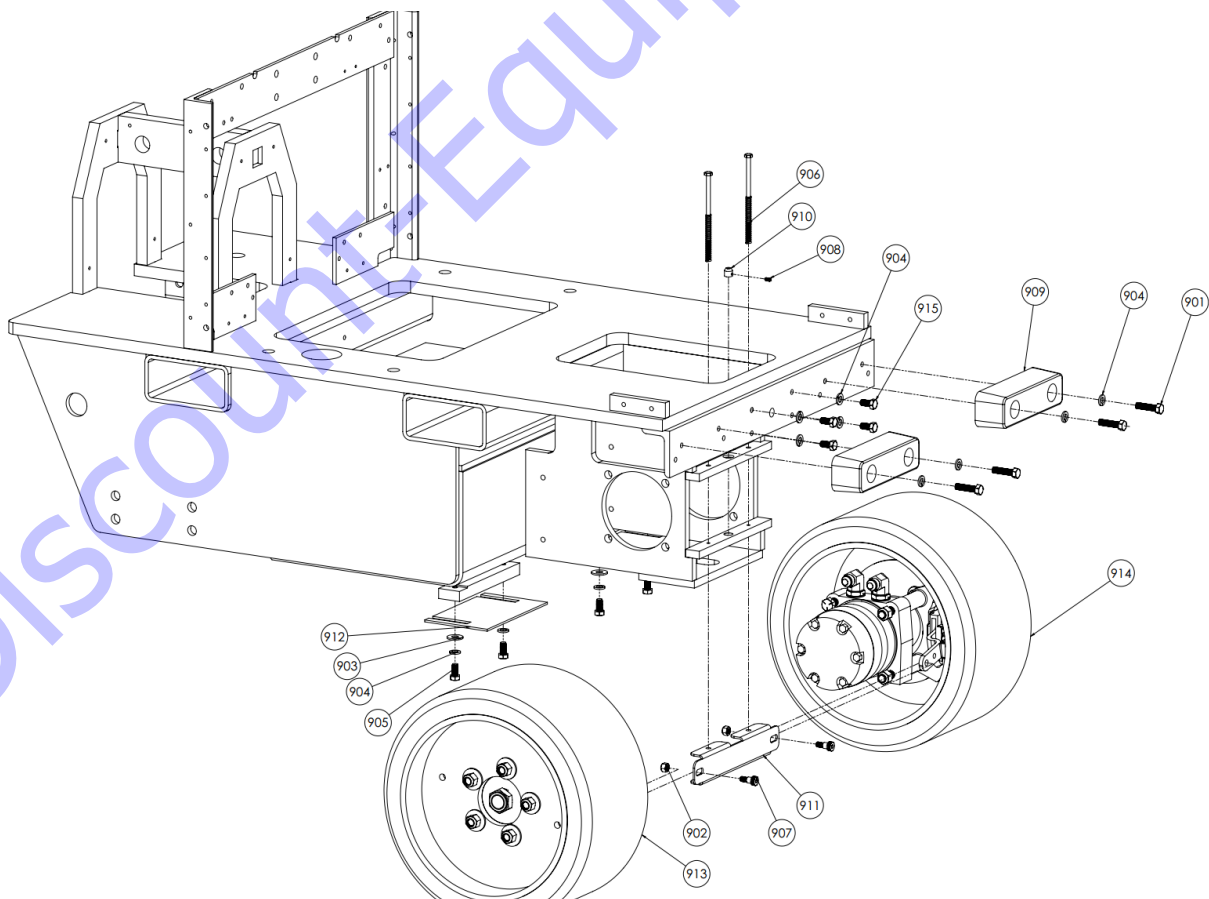
## Rear Panels & Support Breakdown

| Item No. | Part Number | Description                               | Qty. |
|----------|-------------|---|------|
| 801      | 12-0043-16  | Serrated Flange Cap Screw, M6-1.0 x 16mm  | 19   |
| 802      | 12-0044-20  | Serrated Flange Cap Screw, M8-1.25 x 20mm | 4    |
| 803      | 12-0045-20  | Flat Head Phillips Screw, M6-1.0 x 20mm   | 4    |
| 804      | 51-1048     | Uni-Frame Battery Guide, Rear             | 2    |
| 805      | 53-0373     | Uni-Frame Back Panel                      | 1    |
| 806      | 53-0391     | Uni-Frame Rear Side Support               | 2    |
| 807      | 53-0392     | Uni-Frame Rear Cross Support              | 1    |
| 808      | 53-0394     | Top Cover Mounting Bracket                | 1    |
| 809      | 53-0395     | Uni-Frame Rear Support Bracket            | 4    |
| 810      | 53-0406     | Uni-Frame Battery Guide Spacer, Rear      | 2    |
| 811      | 53-0415     | Uni-Frame Side Panel                      | 2    |



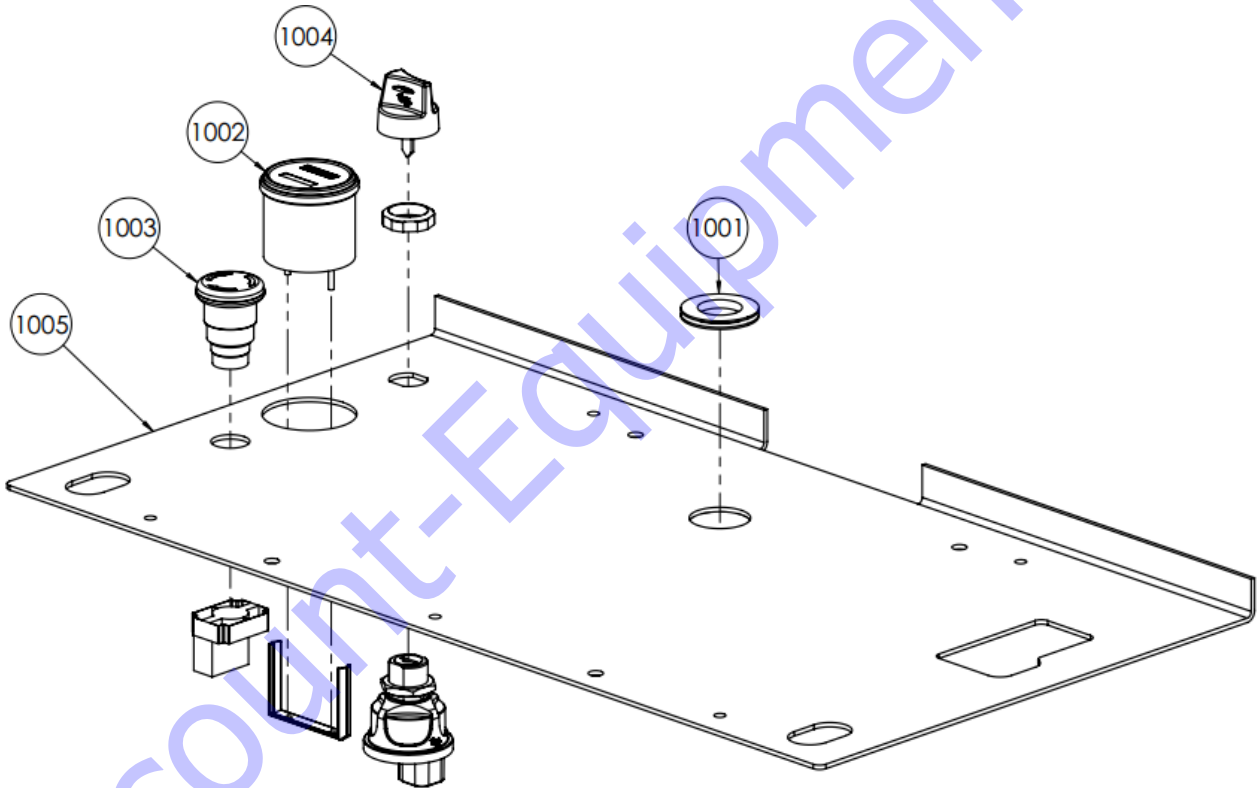
## Rear Wheels Breakdown

| Item No. | Part Number | Description                                       | Qty. |
|----------|-------------|---|------|
| 901      | 12-0034-40  | Hex Head Cap Screw, M10-1.5*40mm                  | 4    |
| 902      | 11-0025     | Nyloc Nut, 5/16"-18                               | 2    |
| 903      | 11-0035     | Flat Washer, 3/8"                                 | 4    |
| 904      | 12-0018-10  | Lock Washer, M10"                                 | 12   |
| 905      | 12-0048-16  | Hex Head Bolt, M10-1.5*16                         | 8    |
| 906      | 11-0279-88  | Hex Head Cap Screw, 1/4"-20 x 5 1/2"              | 2    |
| 907      | 11-0287     | Socket Head Shoulder Screw, 3/8" x 3/8", 5/16"-18 | 2    |
| 908      | 11-0353     | Set Screw, #10-32 x 3/8"                          | 1    |
| 909      | 13-0384     | Rear Bumper                                       | 2    |
| 910      | 51-0513     | Cable Clamp                                       | 1    |
| 911      | 53-0134     | Brake Actuator                                    | 1    |
| 912      | 81-0091     | Wheel Scraper Blade, 7.5" x 4.5"                  | 2    |
| 913      | 96-0381     | Infinity Left Wheel Assembly                      | 1    |
| 914      | 96-0382     | Infinity Right Wheel Assembly                     | 1    |
| 915      | 12-0024     | Hex Head Cap Screw, M10-1.5*30mm                  | 4    |



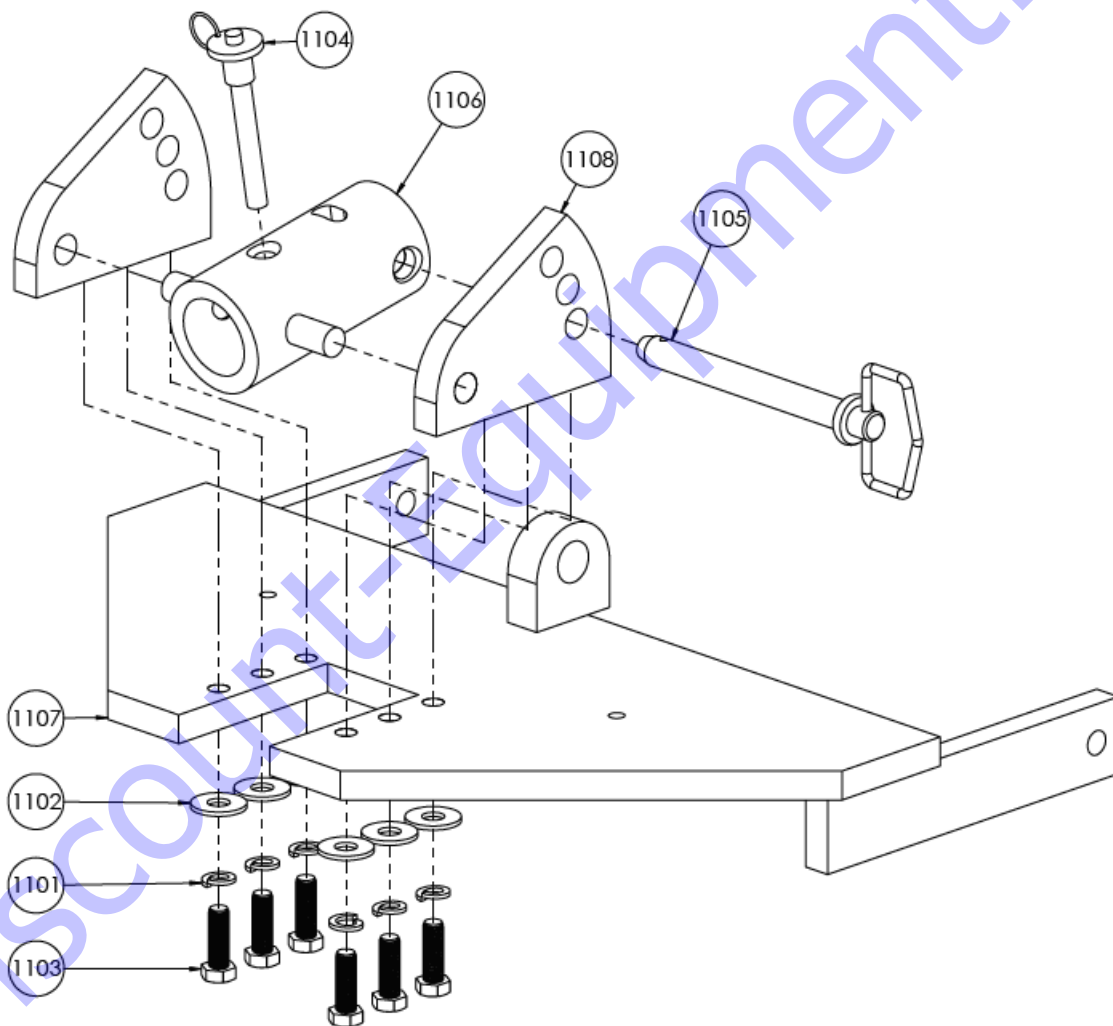
## Infinity Seat Platform Assembly - Part # 96-0389

| Item No. | Part Number | Description                     | Qty. |
|----------|-------------|---------------------------------|------|
| 1001     | 13-0269     | Push-in Grommet for 1 3/8" hole | 1    |
| 1002     | 21-0123     | Battery Indicator w/ Hour Meter | 1    |
| 1003     | 22-0069     | Emergency Stop                  | 1    |
| 1004     | 22-0071     | Key Switch                      | 1    |
| 1005     | 53-0417     | Infinity Seat Panel             | 1    |



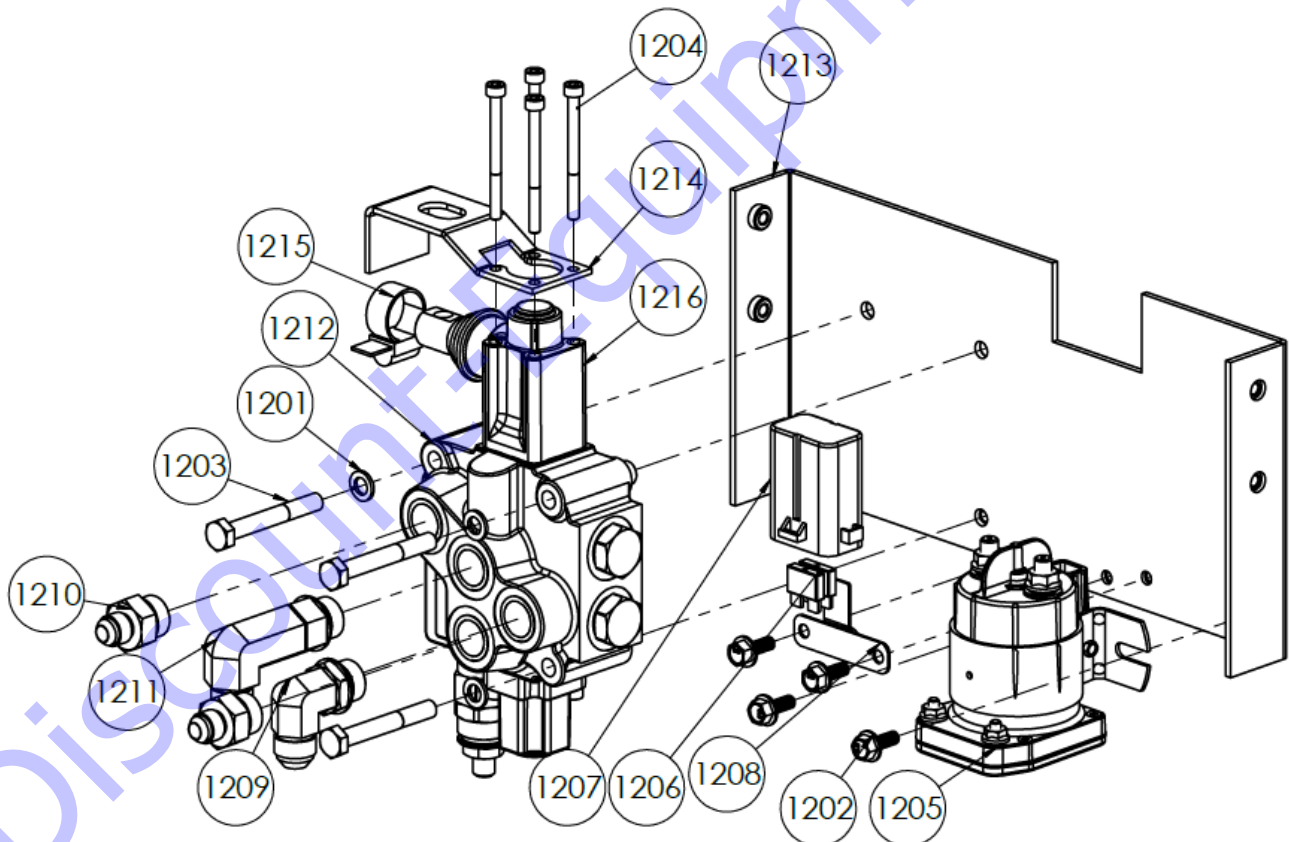
## Pivoting Jaw Assembly - Part # 96-0386

| Item No. | Part Number | Description                            | Qty. |
|----------|-------------|--|------|
| 1101     | 11-0041     | Lock Washer, 1/2"                      | 6    |
| 1102     | 11-0230     | Flat Washer, 1/2"                      | 6    |
| 1103     | 11-0296     | Hex Head Cap Screw, 1/2"-13 x 1 1/2"   | 6    |
| 1104     | 13-0035     | Quick Release Pin, 1/2" x 3"           | 1    |
| 1105     | 13-0386     | Pivoting Jaw Position Pin              | 1    |
| 1106     | 53-0407     | Uni-Frame Receiving Tube Weld Assembly | 1    |
| 1107     | 53-0411     | Uni-Frame Pivoting Jaw Weld Assembly   | 1    |
| 1108     | 53-0428     | Uni-Frame Jaw Pivot Plate              | 2    |



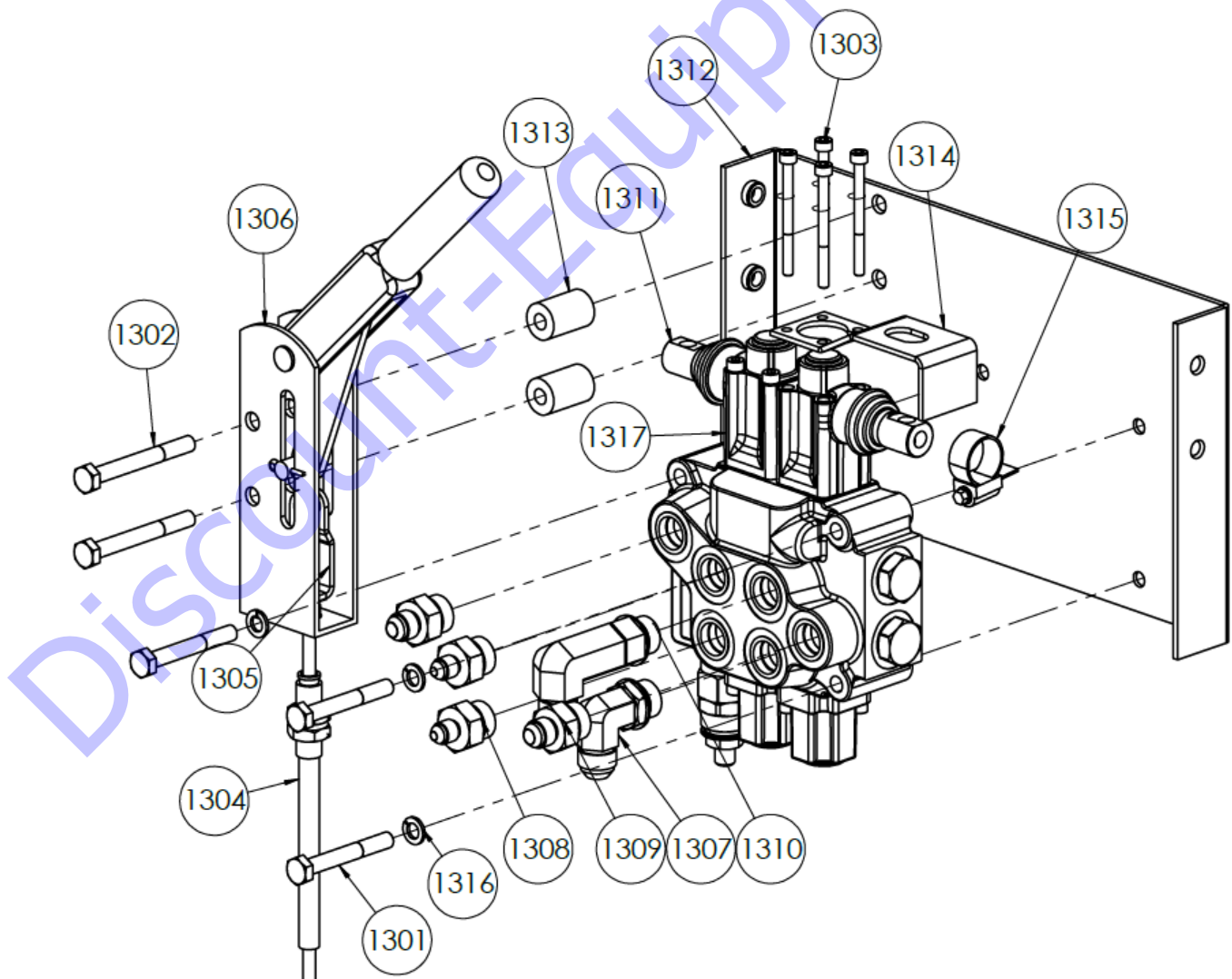
## Infinity Controls Assembly (R) - Part # 96-0385

| Item No. | Part Number | Description                                  | Qty. |
|----------|-------------|--|------|
| 1201     | 12-0018-08  | Lock Washer, M8                              | 3    |
| 1202     | 12-0043-16  | Serrated Flange Cap Screw, M6-1.0 x 16mm     | 4    |
| 1203     | 12-0060     | Socket Head Bolt, M8-1.25 x 60mm             | 3    |
| 1204     | 12-0052     | Socket Head Cap Screw, M5-0.8 x 60mm         | 4    |
| 1205     | 22-0070     | Contactora, 48 VDC                           | 1    |
| 1206     | 23-0158     | Blade Fuse, 5A                               | 2    |
| 1207     | 25-0158     | Fuse Holder Cover                            | 1    |
| 1208     | 25-0159     | Fuse Holder Bracket                          | 1    |
| 1209     | 31-0094     | Hydraulic Fitting, 90 deg 8 JIC – 8 SAE      | 1    |
| 1210     | 31-0233     | Hydraulic Fitting, Straight 6 JIC – 8 SAE    | 2    |
| 1211     | 31-0287     | Hydraulic Fitting, Long 90 deg 8 JIC – 8 SAE | 1    |
| 1212     | 35-0056     | Single Section Valve                         | 1    |
| 1213     | 53-0420     | Infinity Mounting Bracket (R)                | 1    |
| 1214     | 53-0434     | Infinity Handle Collar                       | 1    |
| 1215     | 13-0275     | Hose Clamp                                   | 1    |
| 1216     | 32-0026     | Pivot Box, Infinity Valve                    | 1    |



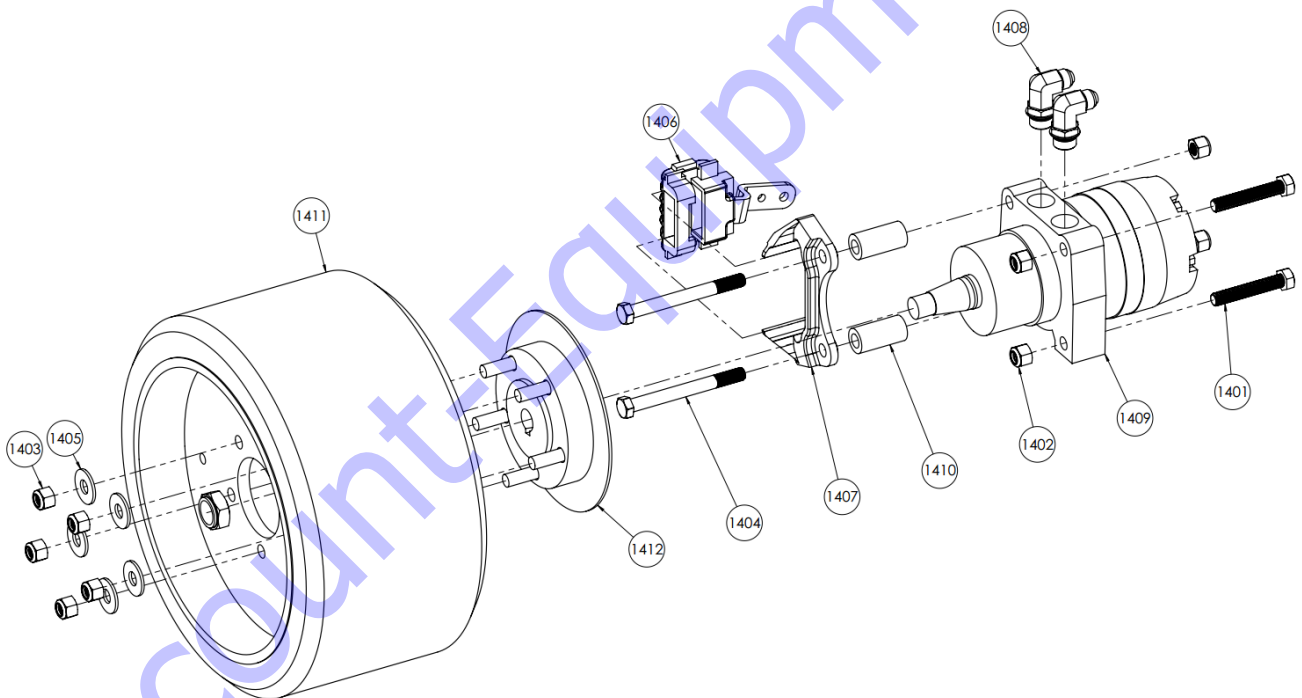
## Infinity Controls Bracket (L) - Part # 96-0384

| Item No. | Part Number | Description                                   | Qty. |
|----------|-------------|---|------|
| 1301     | 12-0060     | Socket Head Bolt, M8-1.25 x 60mm              | 3    |
| 1302     | 12-0049-70  | Hex Head Bolt, M8-1.25 x 70mm                 | 2    |
| 1303     | 12-0052     | Socket Head Cap Screw, M5-0.8 x 60mm          | 4    |
| 1304     | 13-0023     | Brake Cable                                   | 1    |
| 1305     | 13-0037     | Brake Cable Clevis                            | 1    |
| 1306     | 13-0050-1   | Modified Brake Lever                          | 1    |
| 1307     | 31-0094     | Hydraulic Fitting, 90 deg 8 JIC – 8 SAE       | 1    |
| 1308     | 31-0163     | Hydraulic Fitting, Flow Reducer 4 JIC – 8 SAE | 2    |
| 1309     | 31-0233     | Hydraulic Fitting, Straight 6 JIC – 8 SAE     | 2    |
| 1310     | 31-0287     | Hydraulic Fitting, Long 90 deg 8 JIC – 8 SAE  | 1    |
| 1311     | 35-0057     | Two-Section Valve                             | 1    |
| 1312     | 53-0421     | Infinity Mounting Bracket (L)                 | 1    |
| 1313     | 53-0433     | Infinity Brake Spacer                         | 2    |
| 1314     | 53-0434     | Infinity Handle Collar                        | 1    |
| 1315     | 13-0275     | Hose Clamp                                    | 2    |
| 1316     | 12-0018-08  | Lock washer, M8                               | 3    |
| 1317     | 32-0026     | Pivot Box, Infinity Valve                     | 2    |



## Infinity Right Wheel Assembly - Part # 96-0382

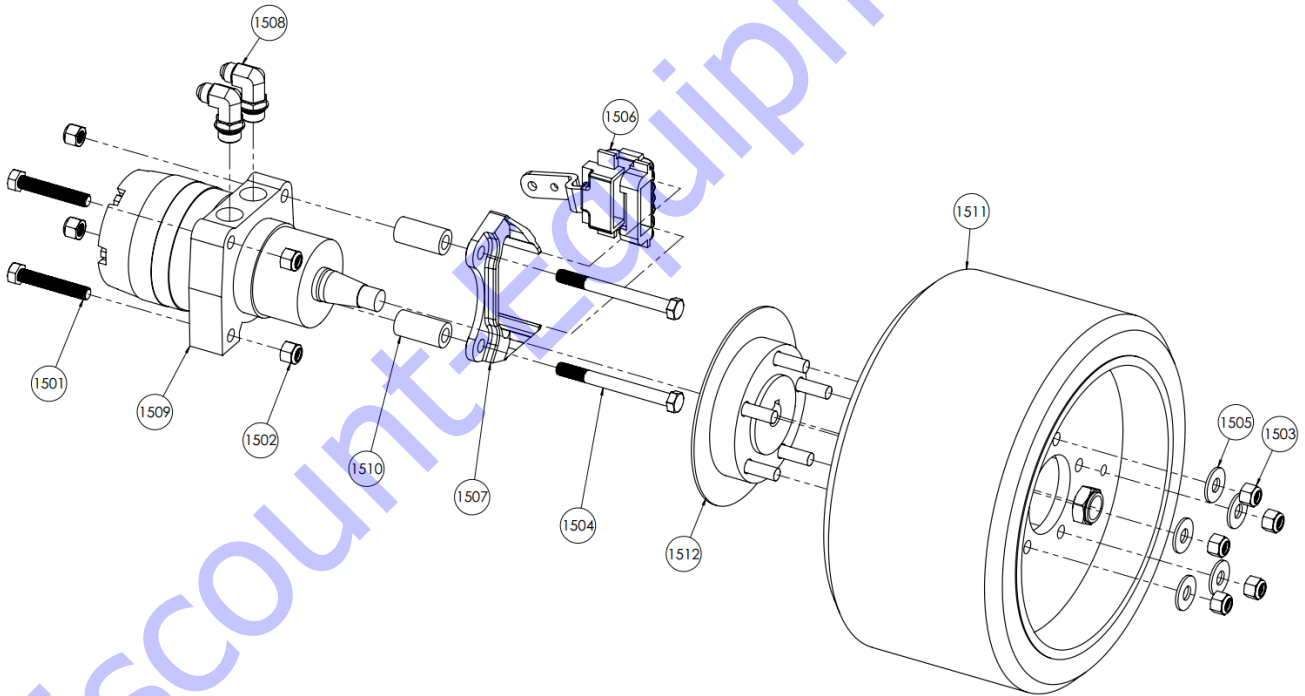
| Item No. | Part Number | Description                              | Qty. |
|----------|-------------|--|------|
| 1401     | 11-0013     | Hex Head Cap Screw, 1/2"-13 x 3"         | 2    |
| 1402     | 11-0028     | Nyloc Nut, 1/2"-13                       | 4    |
| 1403     | 11-0029     | Nyloc Nut, 1/2"-20                       | 5    |
| 1404     | 11-0228     | Hex Head Cap Screw, 1/2"-13 x 5"         | 2    |
| 1405     | 11-0230     | Flat Washer, 1/2"                        | 5    |
| 1406     | 13-0021     | Right Brake Caliper                      | 1    |
| 1407     | 13-0022     | Brake Mounting Bracket                   | 1    |
| 1408     | 31-0053     | Hydraulic Fitting, 90 deg 8 JIC – 10 SAE | 2    |
| 1409     | 33-0003     | Right Wheel Motor                        | 1    |
| 1410     | 51-0491     | Brake Spacer Standoff                    | 2    |
| 1411     | 53-0208     | Wheel and Tire Assembly                  | 1    |
| 1412     | 70-0016     | Wheel Hub with Brake Disc                | 1    |





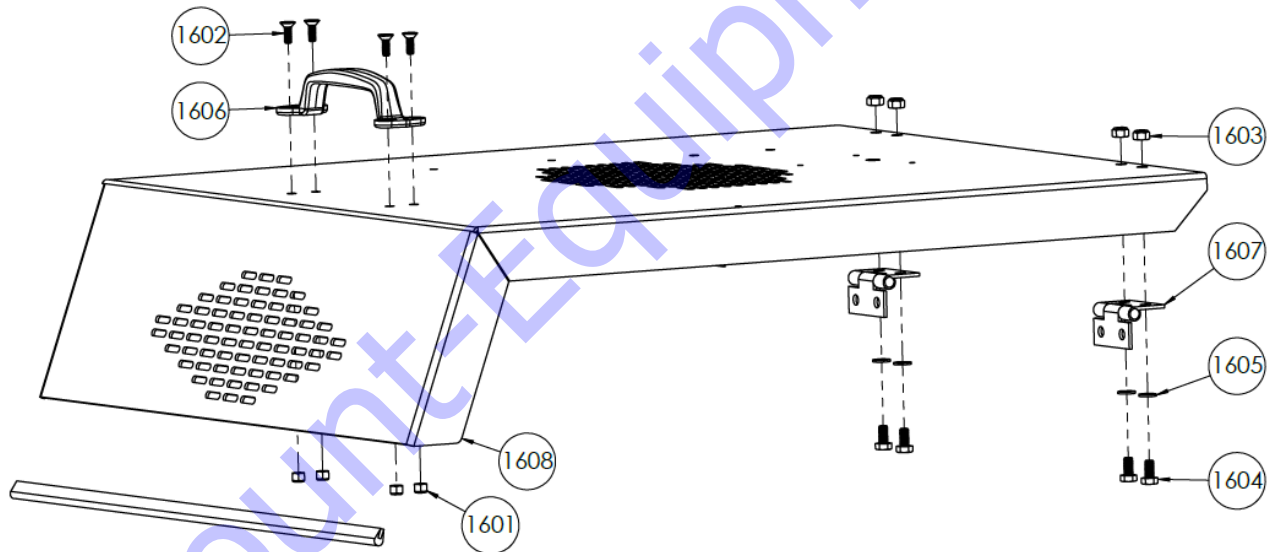
## Infinity Left Wheel Assembly - Part # 96-0381

| Item No. | Part Number | Description                              | Qty. |
|----------|-------------|--|------|
| 1501     | 11-0013     | Hex Head Cap Screw, 1/2"-13 x 3"         | 2    |
| 1502     | 11-0028     | Nyloc Nut, 1/2"-13                       | 4    |
| 1503     | 11-0029     | Nyloc Nut, 1/2"-20                       | 5    |
| 1504     | 11-0228     | Hex Head Cap Screw, 1/2"-13 x 5"         | 2    |
| 1505     | 11-0230     | Flat Washer, 1/2"                        | 5    |
| 1506     | 13-0020     | Left Brake Caliper                       | 1    |
| 1507     | 13-0022     | Brake Mounting Bracket                   | 1    |
| 1508     | 31-0053     | Hydraulic Fitting, 90 deg 8 JIC – 10 SAE | 2    |
| 1509     | 33-0002     | Left Wheel Motor                         | 1    |
| 1510     | 51-0491     | Brake Spacer Standoff                    | 2    |
| 1511     | 53-0208     | Wheel and Tire Assembly                  | 1    |
| 1512     | 70-0016     | Wheel Hub with Brake Disc                | 1    |



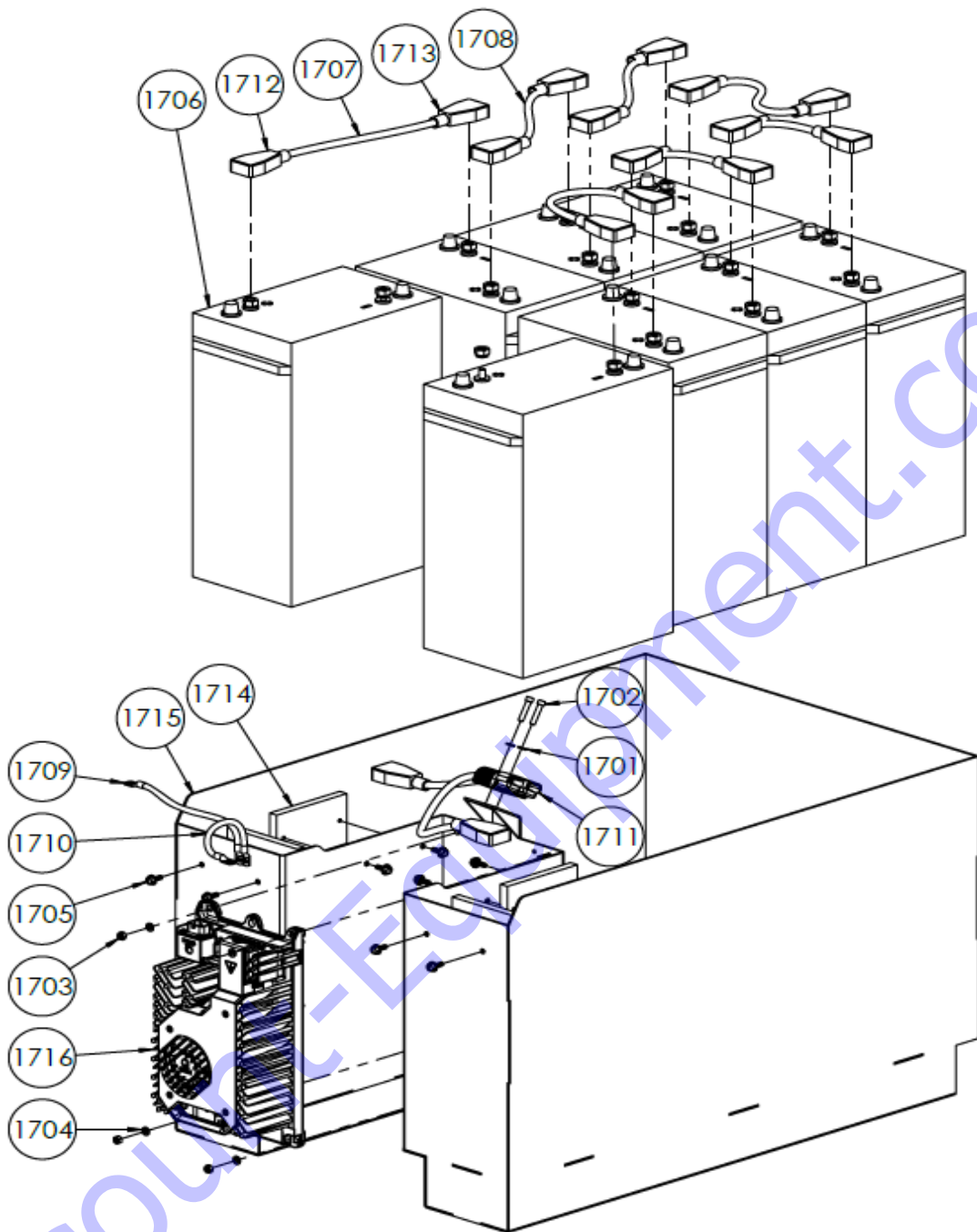
## Infinity Top Cover Assembly - Part # 96-0380

| Item No. | Part Number | Description                            | Qty. |
|----------|-------------|--|------|
| 1601     | 11-0024     | Nyloc Nut, 1/4"-20                     | 4    |
| 1602     | 11-0140     | Flat Head Socket Screw, 1/4"-20 x 3/4" | 4    |
| 1603     | 12-0021-08  | Nyloc Nut, M8-1.25                     | 4    |
| 1604     | 12-0032-16  | Hex Head Cap Screw, M8-1.25 x 16mm     | 4    |
| 1605     | 12-0035-08  | Flat Washer, M8                        | 4    |
| 1606     | 13-0005     | Chrome Handle                          | 1    |
| 1607     | 53-0402     | Uni-Frame Hood Hinge                   | 2    |
| 1608     | 53-0419     | Infinity Top Cover                     | 1    |



## Infinity 2.0 Battery Pack - Part # 71-0033

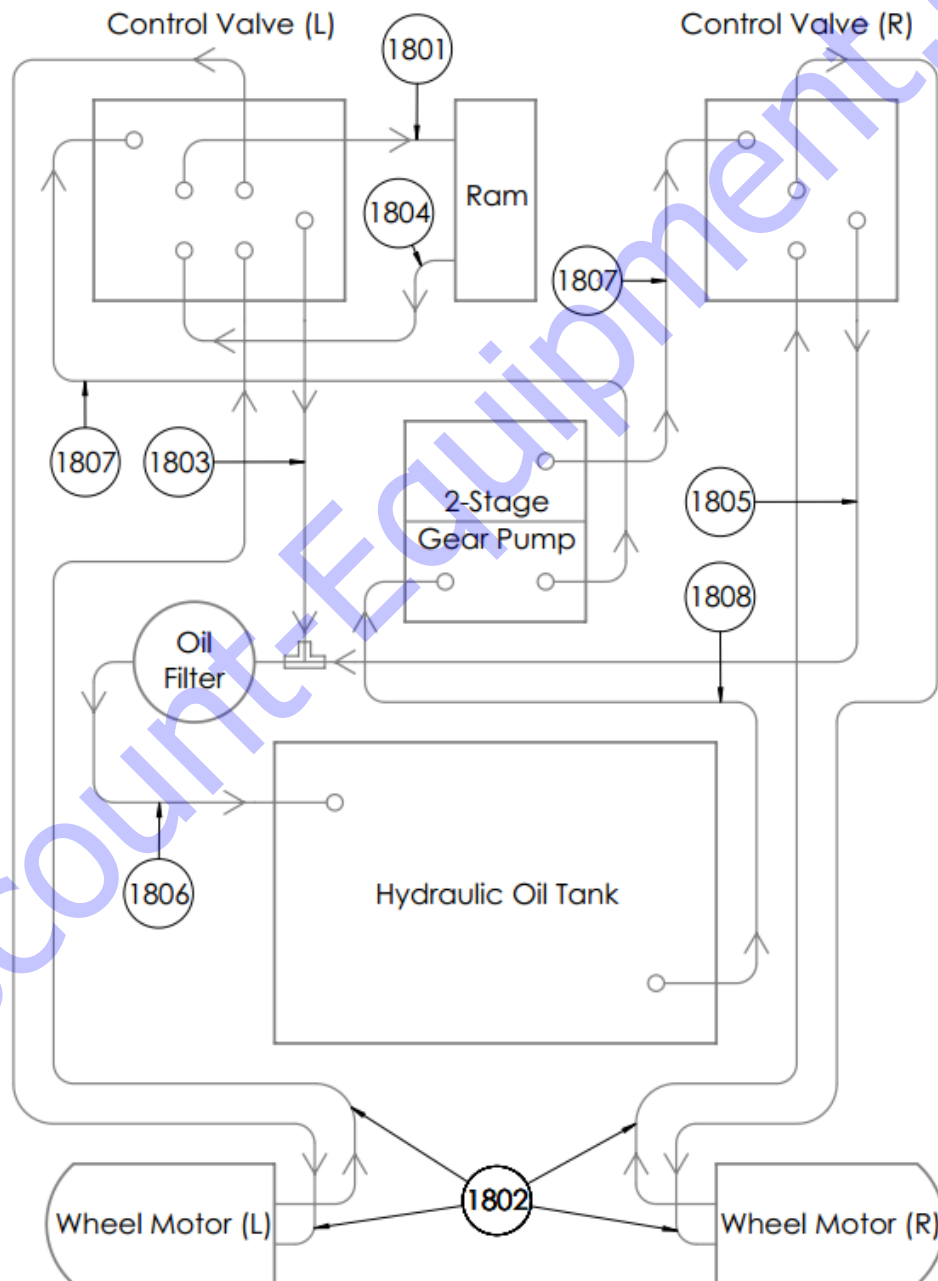
| Item No. | Part Number | Description   | Qty. |
|----------|-------------|---|------|
| 1701     | 12-0018-06  | Lock Washer, M6                                     | 2    |
| 1702     | 12-0020     | Socket Head Cap Screw, M6-1.0 x 30mm                | 2    |
| 1703     | 12-0021-06  | Nyloc Nut, M6-1.0                                   | 4    |
| 1704     | 12-0035-06  | Flat Washer, M6                                     | 4    |
| 1705     | 12-0043-16  | Serrated Flange Cap Screw, M6-1.0 x 16mm            | 8    |
| 1706     | 23-0141     | AGM Battery, 6V 400Ah                               | 8    |
| 1707     | 24-0032     | Battery Pack Wire Assembly, 13.5"                   | 1    |
| 1708     | 24-0033     | Battery Pack Wire Assembly, 11"                     | 6    |
| 1709     | 24-0216     | Infinity Wire Assembly, Back Charger to Negative    | 1    |
| 1710     | 24-0219     | Infinity Wire Assembly, Back Charger to Positive    | 1    |
| 1711     | 24-0234     | Infinity 2.0 Wire Assembly, Blue Plug Batt. Pigtail | 1    |
| 1712     | 25-0103     | Battery Boot, Red                                   | 8    |
| 1713     | 25-0104     | Battery Boot, Black                                 | 8    |
| 1714     | 51-1079     | AMG Battery Shim                                    | 4    |
| 1715     | 53-0241     | Removable Battery Tray                              | 1    |
| 1716     | 81-0672     | Infinity Secondary On-board Charger                 | 1    |



DiscoveredElement.com

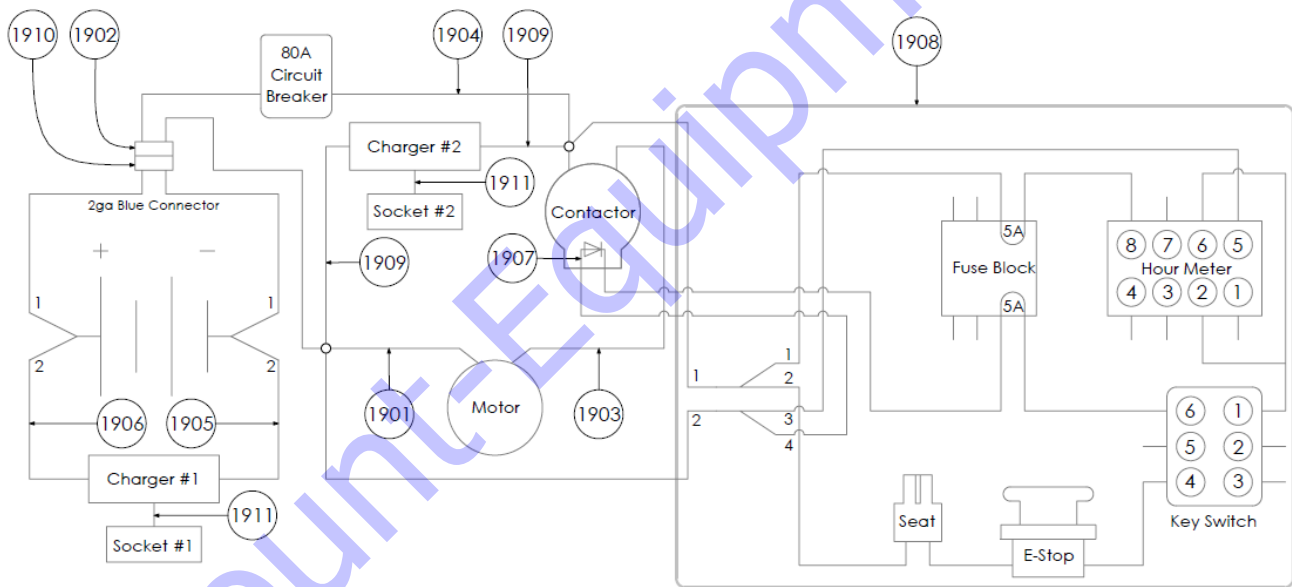
## Infinity 2.0 Hydraulics

| Item No. | Part Number | Description                                  | Qty. |
|----------|-------------|--|------|
| 1801     | 31-0271     | Infinity Hose Assembly, L Valve to Upper Jaw | 1    |
| 1802     | 31-0272     | Infinity Hose Assembly, Valve to Wheel       | 4    |
| 1803     | 31-0273     | Infinity Hose Assembly, L Valve to Filter    | 1    |
| 1804     | 31-0274     | Infinity Hose Assembly, L Valve to Lower Jaw | 1    |
| 1805     | 31-0277     | Infinity Hose Assembly, R Valve to Filter    | 1    |
| 1806     | 31-0278     | Infinity Hose Assembly, Filter to Tank       | 1    |
| 1807     | 31-0291     | Infinity Hose Assembly, Pump to Valve        | 2    |
| 1808     | 31-0292     | Infinity Hose Assembly, Tank to Pump         | 1    |



## Infinity 2.0 Electrical

| Item No. | Part Number | Description   | Qty. |
|----------|-------------|---|------|
| 1901     | 24-0128     | Infinity 2.0 Wire Assembly, Motor Neg. to Junction  | 1    |
| 1902     | 24-0187     | Infinity 2.0 Wire Assembly, Blue Plug Power Pigtail | 1    |
| 1903     | 24-0210     | Infinity 2.0 Wire Assembly, Contactor to Motor Pos. | 1    |
| 1904     | 24-0211     | Infinity 2.0 Wire Assembly, Breaker to Contactor    | 1    |
| 1905     | 24-0216     | Infinity Wire Assembly, Rear Charger to Neg. Batt.  | 1    |
| 1906     | 24-0219     | Infinity Wire Assembly, Rear Charger to Pos. Batt.  | 1    |
| 1907     | 24-0227     | Infinity Diode Assembly                             | 1    |
| 1908     | 24-0230     | Infinity 2.0 Wire Harness                           | 1    |
| 1909     | 24-0233     | Infinity 2.0 Wire Assembly, Front Charger           | 1    |
| 1910     | 24-0234     | Infinity 2.0 Wire Assembly, Blue Plug Batt. Pigtail | 1    |
| 1911     | 81-0675     | Infinity On-board Charger Cable Assembly            | 2    |



## 24. Warranty

Innovatech warrants to the original buyer, for a period of one (1) year or 300 operating hours (whichever comes first) from the date of delivery, that the Equipment is free from defects in materials and workmanship and that the Equipment conforms to the operating specifications supplied with the Equipment. The foregoing warranty is subject to proper operation and maintenance of the Equipment in accordance with the operating instruction and manual supplied to Buyer with the Equipment.

Warranty claims shall be made by Buyer in writing. Innovatech's sole obligation under the foregoing warranty, where it appears to Innovatech's satisfaction that the defect was present at the time of delivery, is at Innovatech's sole option, to repair, replace or correct any such defect.

EXCEPT AS STATED ABOVE THERE ARE NO WARRANTIES, EXPRESS OR IMPLIED. INNOVATECH EXPRESSLY DISCLAIMS ANY WARRANTY, EXPRESS OR IMPLIED, THAT EQUIPMENT SOLD HEREUNDER IS OF MERCHANTABLE QUALITY OR THAT IT CAN BE USED FOR OR IS FIT FOR ANY PARTICULAR PURPOSE. ANY DESCRIPTION OF THE EQUIPMENT IN THIS AGREEMENT OR IN MANUALS, BROCHURES OR LITERATURE AND ANY USE OF ANY SAMPLE, MODEL OR PROTOTYPE OF THE EQUIPMENT IS FOR THE SOLE PURPOSE OF IDENTIFYING OR ILLUSTRATING THE EQUIPMENT, IS NOT PART OF THE BASIS OF THE AGREEMENT BETWEEN INNOVATECH AND BUYER, AND DOES NOT CONSTITUTE A WARRANTY THAT THE EQUIPMENT, AS SUPPLIED, WILL CONFORM TO ANY DESCRIPTION OR TO ANY SAMPLE, MODEL OR PROTOTYPE. INNOVATECH DISCLAIMS ANY WARRANTY RESPECTING OPERATING CAPACITY OR CAPABILITY OF THE EQUIPMENT OR THE ABILITY OF THE EQUIPMENT TO MEET ANY PARTICULAR NEEDS OF THE BUYER. THE EQUIPMENT IS POWERED TO OPERATE AS STATED IN THE OPERATING SPECIFICATIONS SUPPLIED WITH THE EQUIPMENT BUT IT IS UNDERSTOOD AND AGREED TO BUY BUYER THAT ACTUAL OPERATING CAPABILITIES VARY UNDER DIFFERENT OPERATING CONDITIONS FOR WHICH INNOVATECH CAN ASSUME NO RESPONSIBILITY.

BUYER'S EXCLUSIVE REMEDY FOR CLAIMS ARISING UNDER THIS AGREEMENT SHALL BE FOR REPAIR OR, AT INNOVATECH'S SOLE OPTION, REPLACEMENT OF ANY ITEM OF DEFECTIVE EQUIPMENT. INNOVATECH'S LIABILITY FOR ANY LOSSES OR DAMAGE, WHETHER ON ACCOUNT OF NEGLIGENCE, BREACH, AND WARRANTY OR OTHERWISE SHALL IN NO EVENT EXCEED THE PURCHASE PRICE OF THE PARTICULAR ITEM OF EQUIPMENT WITH RESPECT TO WHICH SUCH LOSSES OR DAMAGE OCCURRED.

IN NO EVENT WILL INNOVATECH BE LIABLE FOR ANY DAMAGES CAUSED BY BUYER'S FAILURE TO PERFORM BUYER'S RESPONSIBILITIES, OR FOR ANY LOST PROFITS, LOST PRODUCTION, LOSS OF ANTICIPATED PROFITS OF OTHER INCIDENTAL OR CONSEQUENTIAL DAMAGES, EVEN IF INNOVATECH HAS BEEN ADVISED OF THE POSSIBILITY OF SUCH DAMAGES.

IN NO EVENT WILL INNOVATECH BE LIABLE FOR ANY DAMAGES RESULTING FROM ANY CLAIM AGAINST BUYER BY ANY OTHER PARTY.

### FACTORY SERVICE

A warranty will not be valid unless a written claim authorization comes with returned parts. Innovatech will not provide for any shipping costs for items returned for repair. To obtain warranty repairs, buyer must prepay shipment and return all warranty parts to Innovatech. Damage occurring during shipment is deemed the responsibility of the carrier and claims should be made directly with such carrier.

It will be the customer's responsibility to pay for any non-warranty replacement parts plus the current hourly labor rates for any work done on any machine or part. Service is available upon request; call Innovatech for current labor rates.

# **Discount Equipment**

Discount-Equipment.com is your online resource for commercial and industrial quality parts and equipment sales.

## **Locations:**

Florida (West Palm Beach): [561-964-4949](tel:561-964-4949)

Outside Florida TOLL FREE: [877-690-3101](tel:877-690-3101)

**Need parts?** Check out our website at [www.discount-equipment.com](http://www.discount-equipment.com)

## **Can't find what you need?**

Click on this link: <http://www.discount-equipment.com/category/5443-parts/> and fill out the request form.

Please have the machine model and serial number available in order to help us get you the correct parts. One of our experienced staff members will get back to you with a quote for the right part that your machine needs.

We sell worldwide for the brands: Genie, Terex, JLG, MultiQuip, Mayco, Toro/Stone, Diamond Products, Magnum, Airman, Mustang, Power Blanket, Nifty Lift, Atlas Copco, Chicago Pneumatic, Allmand Brothers, Essick, Miller Spreader, Skyjack, Lull, Skytrak, Tsurumi, Husquvarna/Target, Whiteman-Concrete/Mortar, Stow-Concrete/Mortar, Baldor, Wacker, Sakai, Snorkel, Upright, Mi-T-M, Sullair, Neal, Basic, Dynapac, MBW, Weber, Bartell, Bennar Newman, Haulotte, Ditch Runner, Blaw-Knox, Himoina, Best, Buddy, Crown, Edco, Wyco, Bomag, Laymor, Terremite, Barreto, EZ Trench, Takeuchi, Basic, Bil-Jax, Curtis, Gehl, Heli, Honda, ICS/PowerGrit, Puckett, Waldon, ASV, IHI, Partner, Imer, Clipper, MMD, Koshin, Rice, Gorman Rupp, CH&E, Cat Pumps, Comet, General Pump, Giant, AMida, Coleman, NAC, Gradall, Square Shooter, Kent, Stanley, Tamco, Toku, Hatz, Kohler, Robin, Wisconsin, Northrock, Oztec, Toker TK, Rol-Air, Small Line, Wanco, Yanmar

**New Equipment - Used Equipment - Rental Equipment - Parts and Accessories**

# **Discount Equipment**

[www.discount-equipment.com](http://www.discount-equipment.com)

**561-964-4949**

Parts: [wbparts@Discount-Equipment.com](mailto:wbparts@Discount-Equipment.com)

Sales: [info@Discount-Equipment.com](mailto:info@Discount-Equipment.com)