

1448 PLUS & 1648 PLUS

Asphalt Pavers



www.discount-equipment.com

	1448 Plus	1648 Plus
Paving Range	4' - 12' (1.2 m - 3.6 m)	4' - 13' (1.2 m - 3.9 m)
Paving Speed	80 FPM (24 m/min)	130 FPM (40 m/min)
Hopper Capacity	4 tons	6 tons
Engine	Yanmar Tier III	Yanmar Tier III
Horsepower	36 HP (27 kW)	48 HP (35.4 kW)

1448 PLUS PAVER

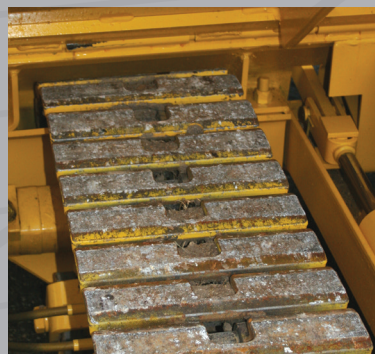


Power Box Pavers deliver what paving professionals need most: a quality paving job which leads to repeat business and referrals. Designed to handle all kinds of commercial and municipal applications, these machines perform for contractors who make their living from the platform of a paver.

- **Paving widths from 4* to 13 feet**
(*with cut-off plates and baffles)
- **Paving depths adjustable to 6 inches**
- **Fully heated, fully extendable, free-floating screeds**
- **Left and right side operating controls**
- **Excellent visibility due to low backwall design**
- **Paving speeds up to 130 feet-per-minute**
- **Low engine noise**



Redesigned hydraulic hose routing system and three test ports make diagnostic access fast and clean. An engine access panel allows unobstructed access to the alternator and starter.



The direct-drive track design is self-cleaning and adjusts tension with a hydraulic cylinder. The track design is resistant to slipping, providing versatility in different sub-base conditions.



www.discount-equipment.com

1648 PLUS PAVER



1648 Plus Power Box Paver

YANMAR - Direct-injection 48 HP diesel engine

SCREED HEATING - Dual propane system

ADDED STABILITY - Front counterweight provides stability

VARIABLE SPEED CONTROL - Infinite control over travel speed, matching any paving condition

ASPHALT HOPPER FRONT LIP - Retains asphalt in the hopper, eliminating spillage

EXCELLENT SERVICE ACCESS - Engine can be serviced from both sides and provides easy access to hoses and components for simple maintenance

1448 Plus Power Box Paver

YANMAR - Direct-Injection 36 HP diesel engine

SCREED HEATING - Exhaust diverter valve allows exhaust to heat the screed, propane heat screed is optional

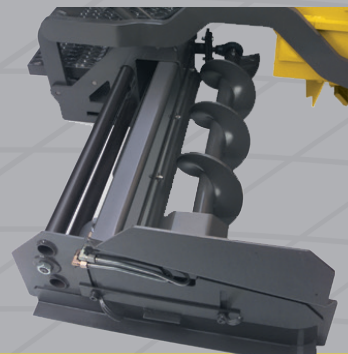
WARNING ALARMS - Electronic module features visual audible warning alarms.

LARGE HYDRAULIC COOLER - Maintains safe operating oil temperature in tough paving conditions

EXCELLENT SERVICE ACCESS - Engine can be serviced from both sides and provides easy access



Full-floating, adjustable and vibratory screeds are standard. The 8' length and 13' width provide a solid foundation for smooth mats. Beyond 8 feet, the 1448 utilizes a strike-off plate screed extension and the 1648 utilizes a fully-heated wear plate.



Independent hydraulically driven augers found on the screed extensions on the 1648 model are efficient at moving material to the end of the extension, allowing for a true 13 foot paving experience.

SPECIFICATIONS

SPECIFICATIONS		1448 Plus	1648 Plus
DIMENSIONS	Overall Height (mm)	6'11" (2108)	7'1" (2172)
	Transport Width (mm)	8'5" (2565)	8'6" (2591)
	Operating Width (mm)	10'9" (3277)	10'5" (3175)
	Length (mm)	7'4" (2235)	9'7" (2921)
	Truck Clearance (mm)	23" (584)	23" (584)
	Operating Weight (kg)	7775 lbs. (3527)	10,600 lbs. (4808)
ENGINE	Model	Yanmar	Yanmar
	Type	Tier III - Diesel	Tier III - Diesel
	Net Power (kW) @ rpm	36 hp (27) @ 3000	48 hp (35.4) @ 3000
	Fuel Tank (L)	8 gal. (30)	12.5 gal. (47.3)
SCREED	Full Floating & Adjustable (mm)	8' - 12' (2438 - 3658)	8' - 13' (2438 - 3962)
	Vibratory	2500 vpm - maximum	3000 vpm - maximum
	Exhaust-Heated	Standard	N/A
	Propane-Heated	Option	Standard
	Hydraulic Extensions (mm)	24" (610) w/strike-off	30" (762) w/ 6" (152) wear plate
	Crown / Invert Adjustment (mm)	Dual Lever, 0"-2" (0 - 51)	Single Lever, 0"-3" (0 - 76)
MATERIAL FLOW	Independent Hydraulic Operated Gates	Standard	Standard
	Gate Cut-Off Plates (mm)	Option, 6"-36" (152 - 915)	Option, 6"-36" (152 - 915)
	Gravity Flow Asphalt Hopper Capacity (kg)	4 tons (3629)	6 tons (5443)
	Independent Hydraulic Operating Augers	Located on the Gate	Located on the Gate or Screed Extension
DRIVE CONFIGURATION	Speed (m/min)	Single, 0 - 80 FPM (0 - 24)	Single, 0 - 130 FPM (0 - 40)
	Self-Adjusting, Steel Track (mm)	12" x 3" (305 x 76)	12" x 3" (305 x 76)
	Counter-Rotating	Standard	Standard
	Fine Tune Steering Valve	N/A	Standard
	Track Length (mm)	43" (1092)	48" (1219)
OPERATOR STATION	Platform	Single-Span	Isolated Dual-Span
	Controls	Left and Right Sides	Left and Right Sides
	Muffler w/Exhaust Diverter Valve	Standard	N/A
	Wash-Down Stations (L)	Single, 5 gal. (18.9)	Dual, 5.5 gal. (21)
HYDRAULIC SYSTEM	Variable Hydrostatic Drive Pump (L/min)	17.0 gpm (64)	37.0 gpm (140)
	Hydraulic Auger Drive Pump (L/min)	7.5 gpm (28.4)	10.9 gpm (41.3)
	Hydraulic Cylinder Pump (L/min)	N/A	10.9 gpm (41.3)
	Hydraulic Oil Cooler Capacity (L/min)	12.0 gpm (45.4)	32.0 gpm (121.1)
	Hydraulic Reservoir (L)	18.0 gal. (68)	20 gal. (75.7)
PERFORMANCE	Paving Width - Minimum (mm)	4' (1219)	4' (1219)
	Paving Width - Standard (mm)	8' (2438)	8' (2438)
	Paving Width - Maximum (mm)	12' (3658)	13' (3962)
	Paving Depth (mm)	0" - 6" (0 - 152)	0" - 6" (0 - 152)
	Hydraulic Feed Auger	2	2
	Hydraulic Material Flow Gates	2	2

Materials and specifications are subject to change without notice. Featured machines and products may include optional equipment. All rights reserved.

