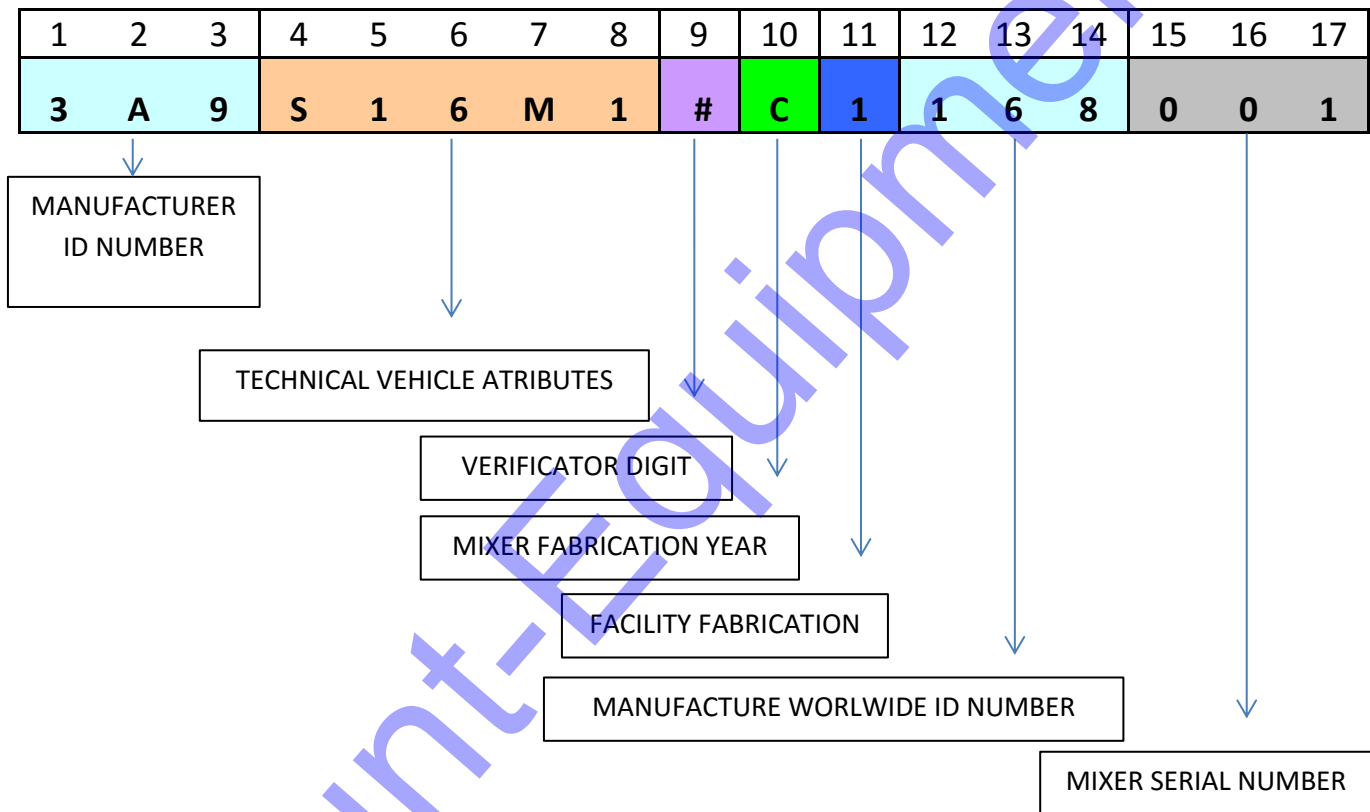




HOW TO: READ A VIN SERIAL NUMBER ON TK EQUIPMENT

TK Mixers come with a 17 digits serial number on every unit. This serial number helps us to track manufacture date on every unit. Here is an easy explanation in how to determine your mixer manufactured period.

EXAMPLE :





Position 1-3 worldwide manufacturer Identification number

Position 4 Vehicle Type

R	TRAILER
---	---------

S	SEMITRAILER
---	-------------

Position 4-8 Technical vehicle/trailer characteristics

Position 5-6 Vehicle length, where 07 is the smallest and 40 is the largest.

EQUIPMENT IDENTIFICATION NUMBER			
VIN NUMBER IDENTIFICATION	MORTAR MIXERS	VIN NUMBER IDENTIFICATION	CONCRETE MIXERS
25	MM80	36	CM12
26	MM80P	37	CM7
27	MM60	38	CM9
28	MM95-MM10	39	R100TB
29	HM12	40	R150TB
53	MM12	41	R200LX
54	MM12G	42	C9 PRO Series
46	MSM	43	JCS
47	BBC600	44	JCST
48	CM9P	45	MCS1

Position 8 number of axles (from 1 to 3)

1 = 1 axle, 2 = 2 axles, 3 = 3 axles

Position 9 VIN verification number authenticity



BTM Equipment, INC
dba TK EQUIPMENT



www.discount-equipment.com

Position 10 Manufactured year

YEAR	CODE
1998	W
1999	X
2000	Y
2001	1
2002	2
2003	3
2004	4
2005	5
2006	6
2007	7
2008	8
2009	9
2010	A
2011	B
2012	C
2013	D
2014	E

Position 11 Manufactured Facility

Position 12-14 Manufacturer worldwide identification number

Position 15-17 Consecutive Serial Numbers

Discount Equipment

Discount-Equipment.com is your online resource for commercial and industrial quality parts and equipment sales.

Locations:

Florida (West Palm Beach): [561-964-4949](tel:561-964-4949)

Outside Florida TOLL FREE: [877-690-3101](tel:877-690-3101)

Need parts? Check out our website at www.discount-equipment.com

Can't find what you need?

Click on this link: <http://www.discount-equipment.com/category/5443-parts/> and fill out the request form.

Please have the machine model and serial number available in order to help us get you the correct parts. One of our experienced staff members will get back to you with a quote for the right part that your machine needs.

We sell worldwide for the brands: Genie, Terex, JLG, MultiQuip, Mayco, Toro/Stone, Diamond Products, Magnum, Airman, Mustang, Power Blanket, Nifty Lift, Atlas Copco, Chicago Pneumatic, Allmand Brothers, Essick, Miller Spreader, Skyjack, Lull, Skytrak, Tsurumi, Husquyarna/Target, Whiteman-Concrete/Mortar, Stow-Concrete/Mortar, Baldor, Wacker, Sakai, Snorkel, Upright, Mi-T-M, Sullair, Neal, Basic, Dynapac, MBW, Weber, Bartell, Bennar Newman, Haulotte, Ditch Runner, Blaw-Knox, Himoina, Best, Buddy, Crown, Edco, Wyco, Bomag, Laymor, Terremite, Barreto, EZ Trench, Takeuchi, Basic, Bil-Jax, Curtis, Gehl, Heli, Honda, ICS/PowerGrit, Puckett, Waldon, ASV, IHI, Partner, Imer, Clipper, MMD, Koshin, Rice, Gorman Rupp, CH&E, Cat Pumps, Comet, General Pump, Giant, AMida, Coleman, NAC, Gradall, Square Shooter, Kent, Stanley, Tamco, Toku, Hatz, Kohler, Robin, Wisconsin, Northrock, Oztec, Toker TK, Rol-Air, Small Line, Wanco, Yanmar