

Discount Equipment

Discount-Equipment.com is your online resource for commercial and industrial quality parts and equipment sales.

Locations:

Florida (West Palm Beach): [561-964-4949](tel:561-964-4949)

Outside Florida TOLL FREE: [877-690-3101](tel:877-690-3101)

Need parts? Check out our website at www.discount-equipment.com

Can't find what you need?

Click on this link: <http://www.discount-equipment.com/category/5443-parts/> and fill out the request form.

Please have the machine model and serial number available in order to help us get you the correct parts. One of our experienced staff members will get back to you with a quote for the right part that your machine needs.

We sell worldwide for the brands: Genie, Terex, JLG, MultiQuip, Mayco, Toro/Stone, Diamond Products, Magnum, Airman, Mustang, Power Blanket, Nifty Lift, Atlas Copco, Chicago Pneumatic, Allmand Brothers, Essick, Miller Spreader, Skyjack, Lull, Skytrak, Tsurumi, Husquvarna/Target, Whiteman-Concrete/Mortar, Stow-Concrete/Mortar, Baldor, Wacker, Sakai, Snorkel, Upright, Mi-T-M, Sullair, Neal, Basic, Dynapac, MBW, Weber, Bartell, Bennar Newman, Haulotte, Ditch Runner, Blaw-Knox, Himoina, Best, Buddy, Crown, Edco, Wyco, Bomag, Laymor, Terremite, Barreto, EZ Trench, Takeuchi, Basic, Bil-Jax, Curtis, Gehl, Heli, Honda, ICS/PowerGrit, Puckett, Waldon, ASV, IHI, Partner, Imer, Clipper, MMD, Koshin, Rice, Gorman Rupp, CH&E, Cat Pumps, Comet, General Pump, Giant, AMida, Coleman, NAC, Gradall, Square Shooter, Kent, Stanley, Tamco, Toku, Hatz, Kohler, Robin, Wisconsin, Northrock, Oztec, Toker TK, Rol-Air, Small Line, Wanco, Yanmar

New Equipment - Used Equipment - Rental Equipment - Parts and Accessories

Discount Equipment

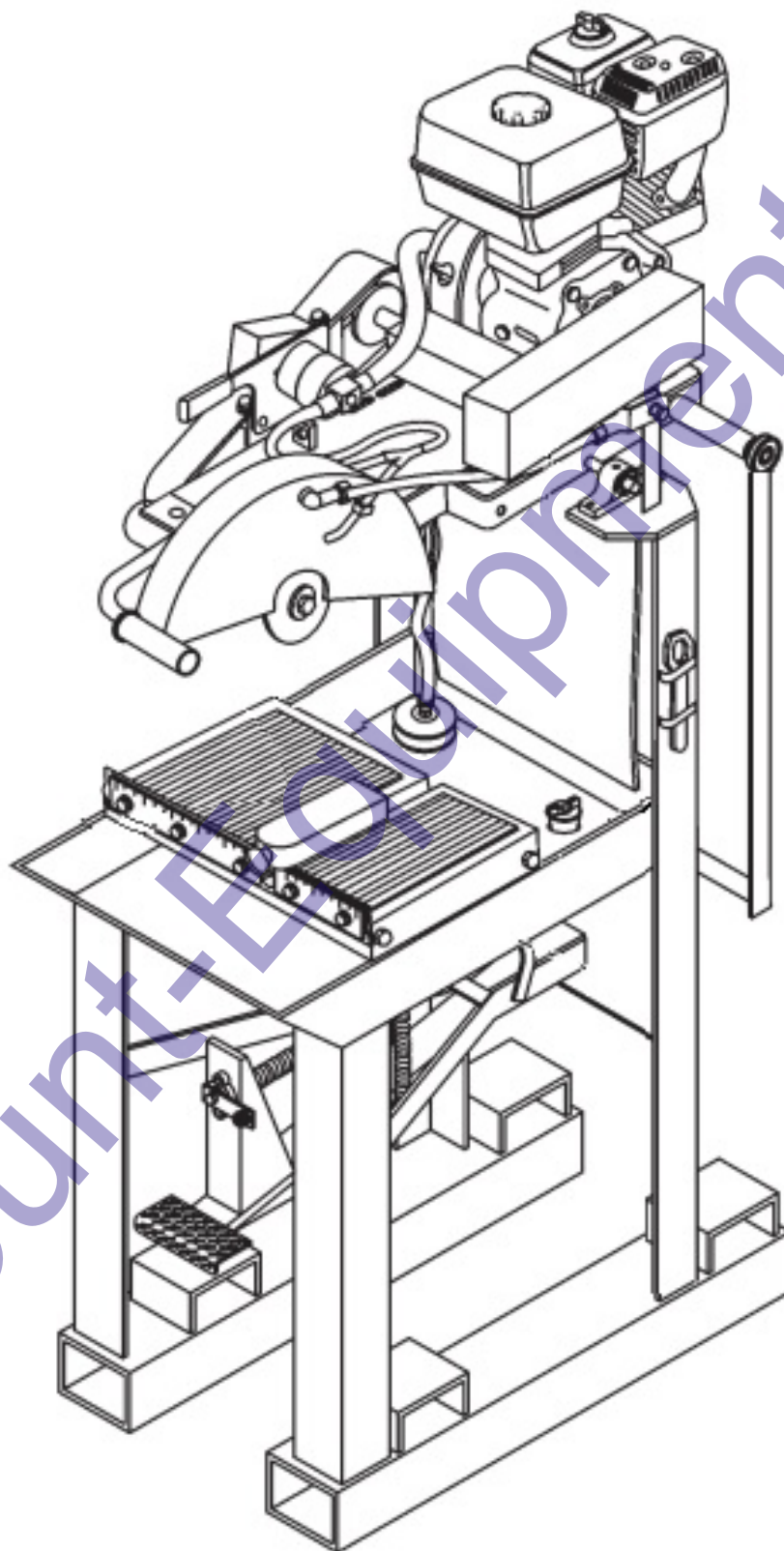
www.discount-equipment.com

561-964-4949

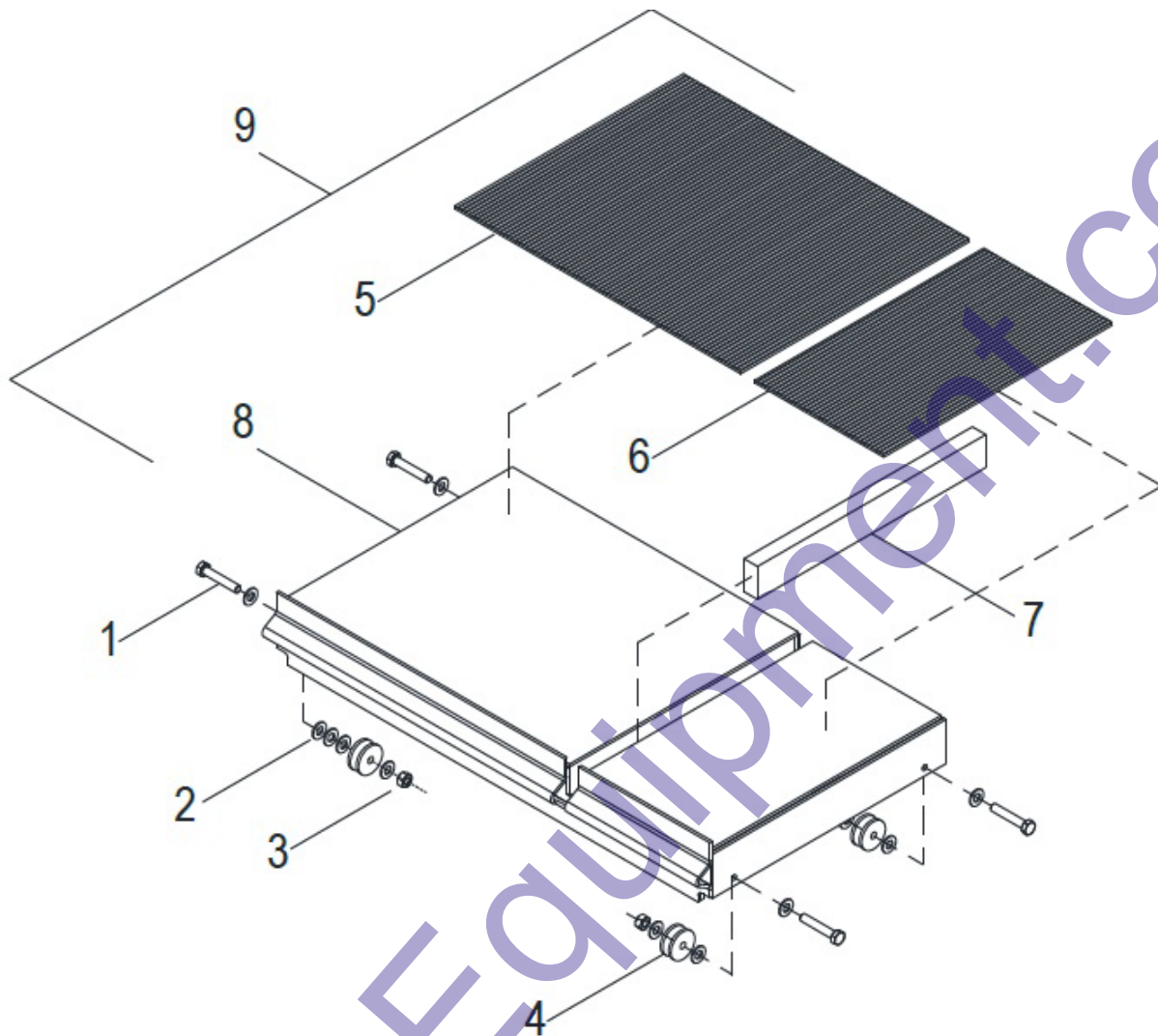
Sales: info@Discount-Equipment.com

Parts: wpbparts@Discount-Equipment.com

BBS20

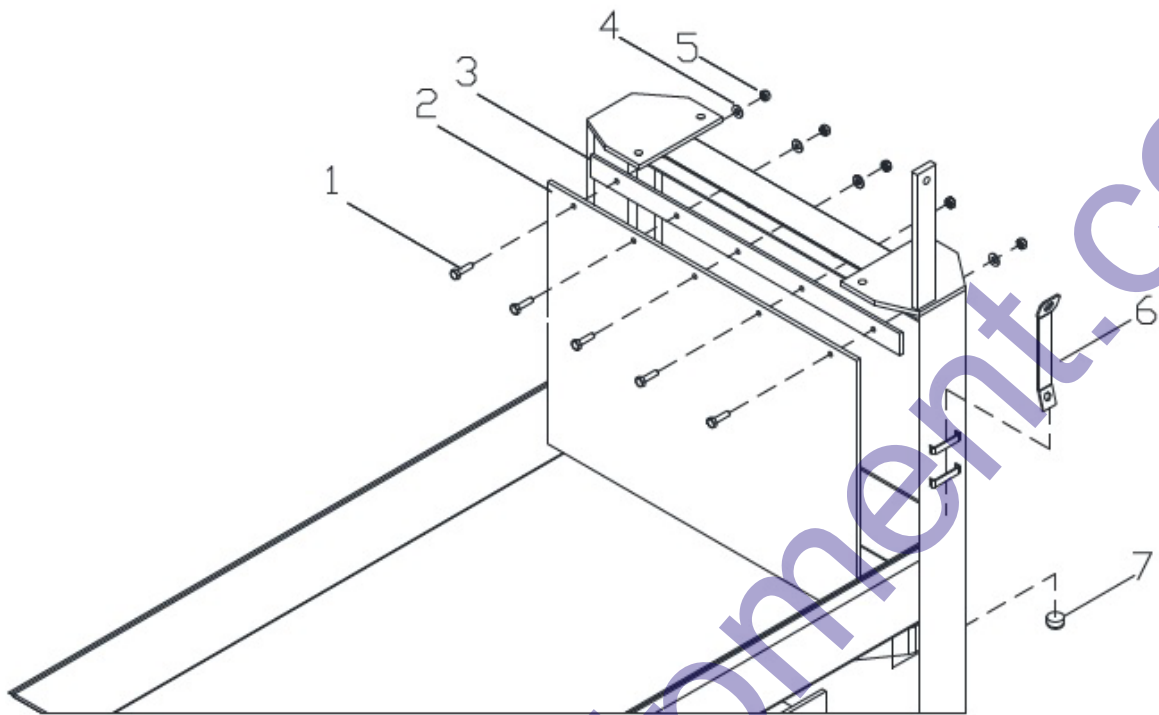


CART ASSEMBLY



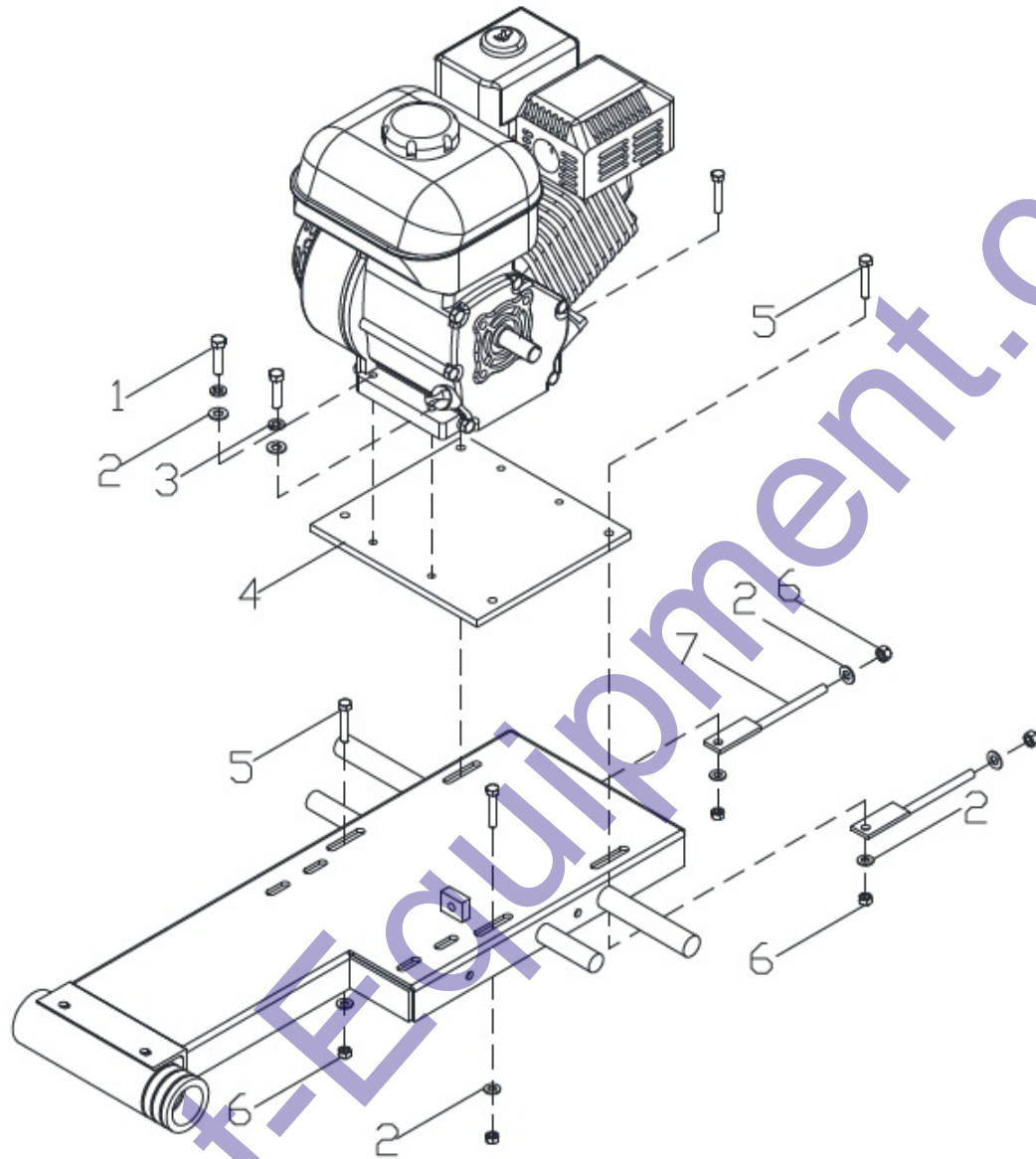
CART ASSEY BREAK DOWN				
ITEM	M.I.D. #	PART #	DESCRIPTION	BBS20
1	TOCD056134		BOLT HEXHD, 5/16" X 1-3/4"	4
2	RNPX056GAL		WASHER PLAIN, 5/16"	16
3	TCCS056GAL	T148	LOCK NUT, 5/16"	4
4	0414NY01CR		1-1/4" STEEL BALL BEARING WHEEL D-1796	4
5	0414HN01CR		RUBBER V-RIB (15" X 12")	1
6	0414HN02CR		RUBBER V-RIB (6-3/4" X 12")	1
7	0414MD01CR		WOOD INSERT	1
8	0414CO01CR		CART	1
9	0414CO01EF		ASSEMBLY CART	1

CUTTING TRAY ASEY



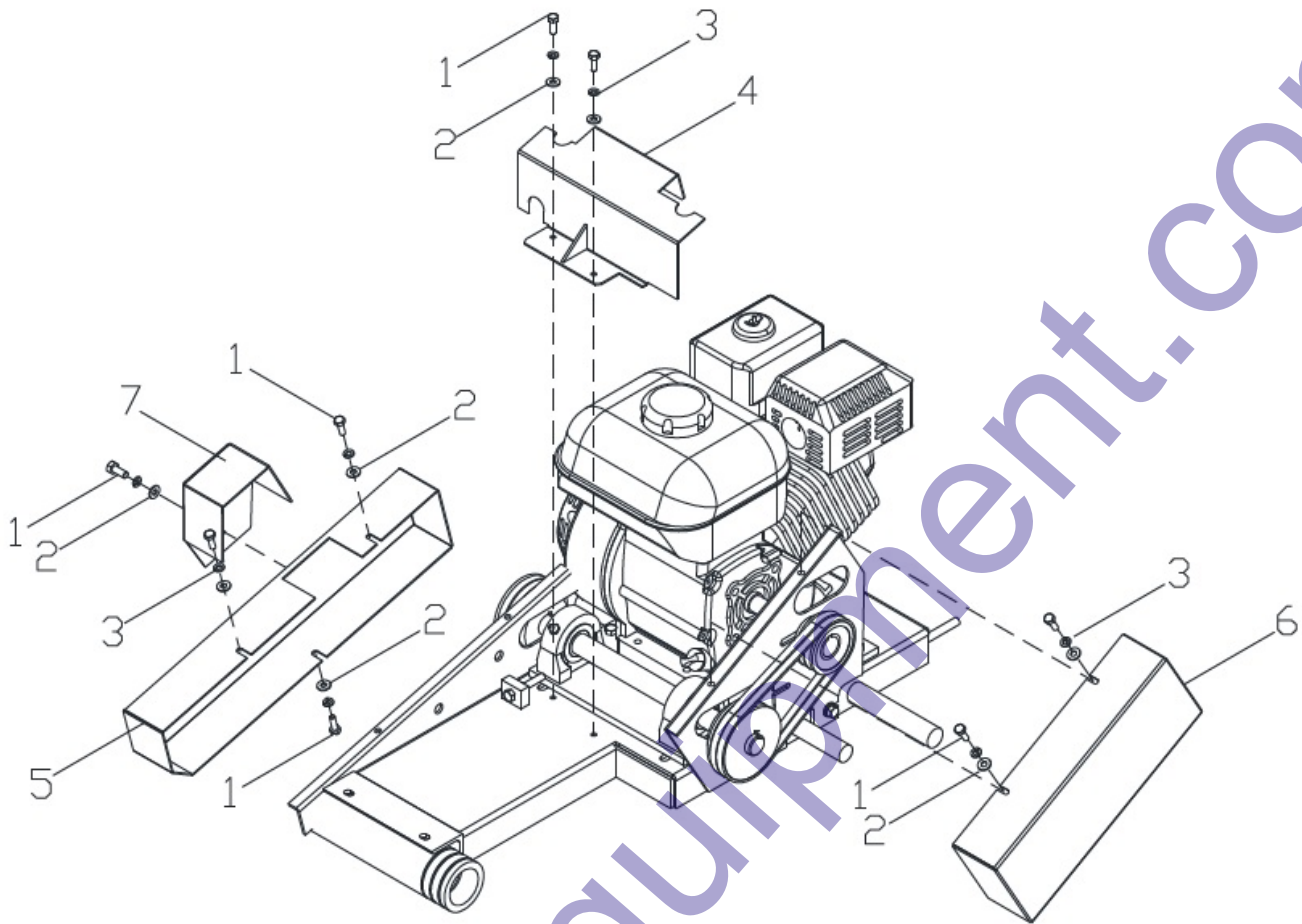
TRAY ASSEY BREAK DOWN				
ITEM	M.I.D. #	PART #	DESCRIPTION	BBS20
1	TOCD014100		BOLT HEXHD, 1/4" X 1"	5
2	0414HN01CA		SPLASH CURTAIN, BBC20	1
3	0414SO01CA		CURTAIN SUPPORT	1
4	RNPX014GAL		WASHER PLAIN, 1/4"	5
5	TCCS014GAL		LOCK NUT, 1/4"	5
6	0414LA01CA		9/16" GUARD BLADE WRENCH, BBS20	1
7	0414RF01CA		CAP, 1/2"	1

ENGINE MOUNT ASSEY



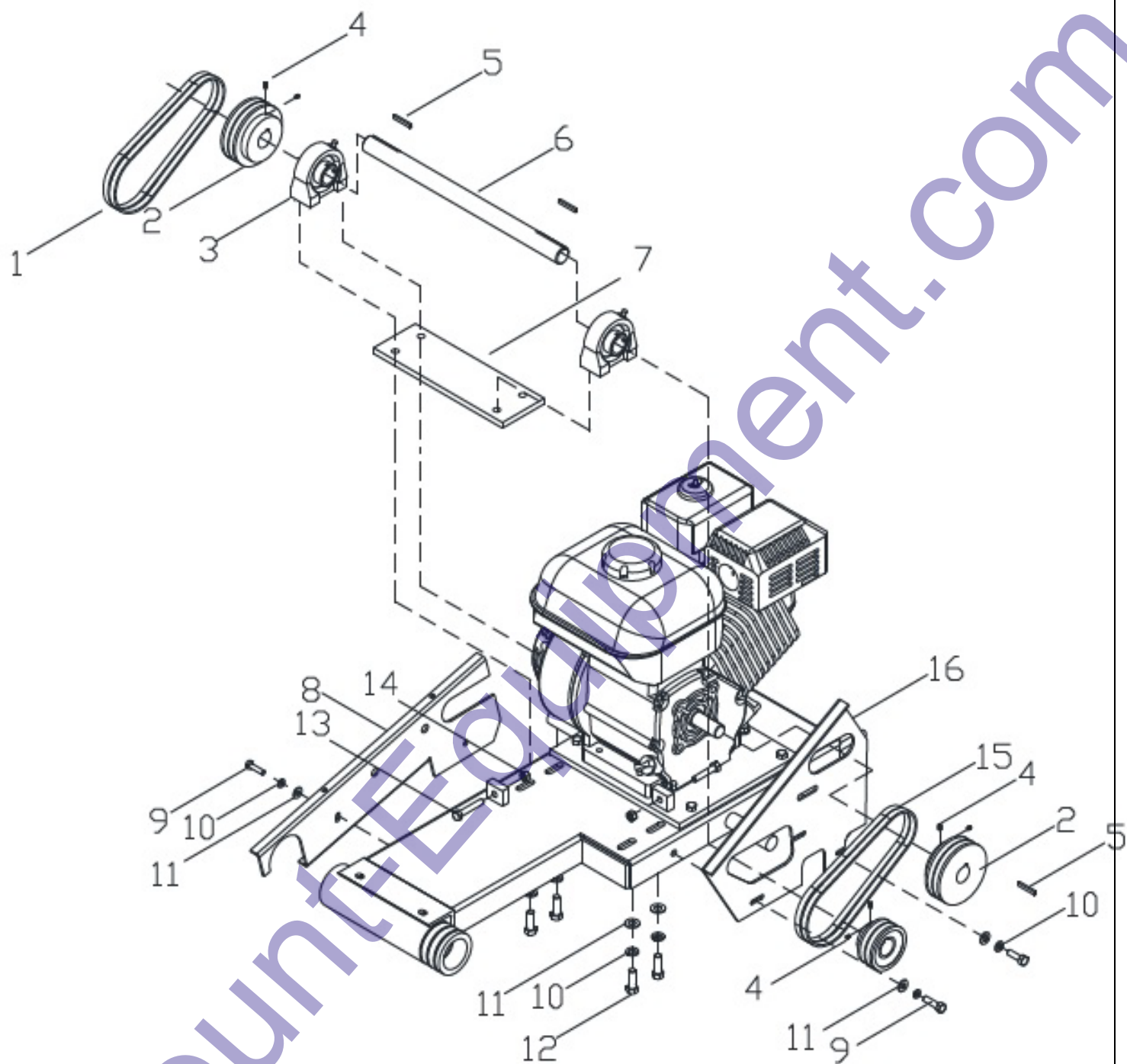
ENGINE MOUNT ASSEY				
ITEM	M.I.D. #	PART #	DESCRIPTION	BBS20
1	TOCD038112	T176	BOLT HEXHD, 3/8" X 1-1/2"	4
2	RNPX038GAL	T112	WASHER PLAIN, 3/8"	10
3	RNRX038GAL	T113	LOCK WASHER, 3/8"	4
4	0414PL01BM		ENGINE MOUNT	1
5	TOCD038134		BOLT HEXHD, 3/8" X 1-3/4"	4
6	TCCS038GAL	T114	LOCK NUT, 3/8"	6
7	0414CO01BM		BELT TIGHTENER	2

ENGINE BELTS & JACKSHAFT COVER ASSEY



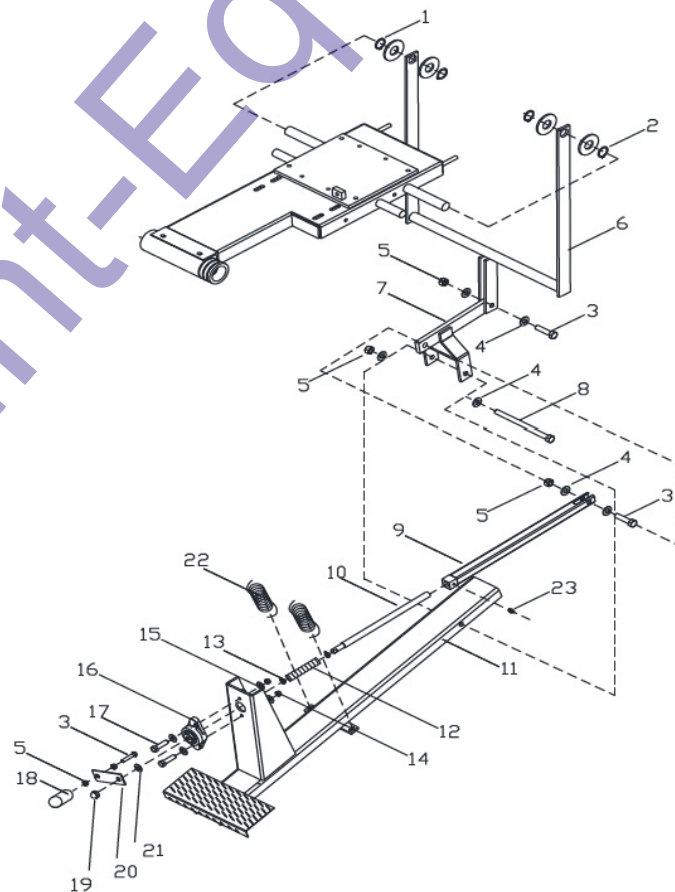
ENGINE/BELTS COVER ASSEY				
ITEM	M.I.D. #	PART #	DESCRIPTION	BBS20
1	TOCD036034		BOLT HEXHD, 3/16" X 3/4"	8
2	RNPX036GAL		WASHER PLAIN, 3/16"	8
3	RNRX036GAL		LOCK WASHER, 3/16"	8
4	0414LA01JF		JACKSHAFT COVER GUARD W/FITTINGS OPENING	1
5	0414LA03GB		WATER PUMP BELT GUARD, LEFT SIDE	1
6	0414LA04GB		ENGINE & JACKSHAFT GUARD, RIGHT SIDE	1
7	0414LA05GB		COVER, WATER PUMP	1

JACKSHAFT ASSEY



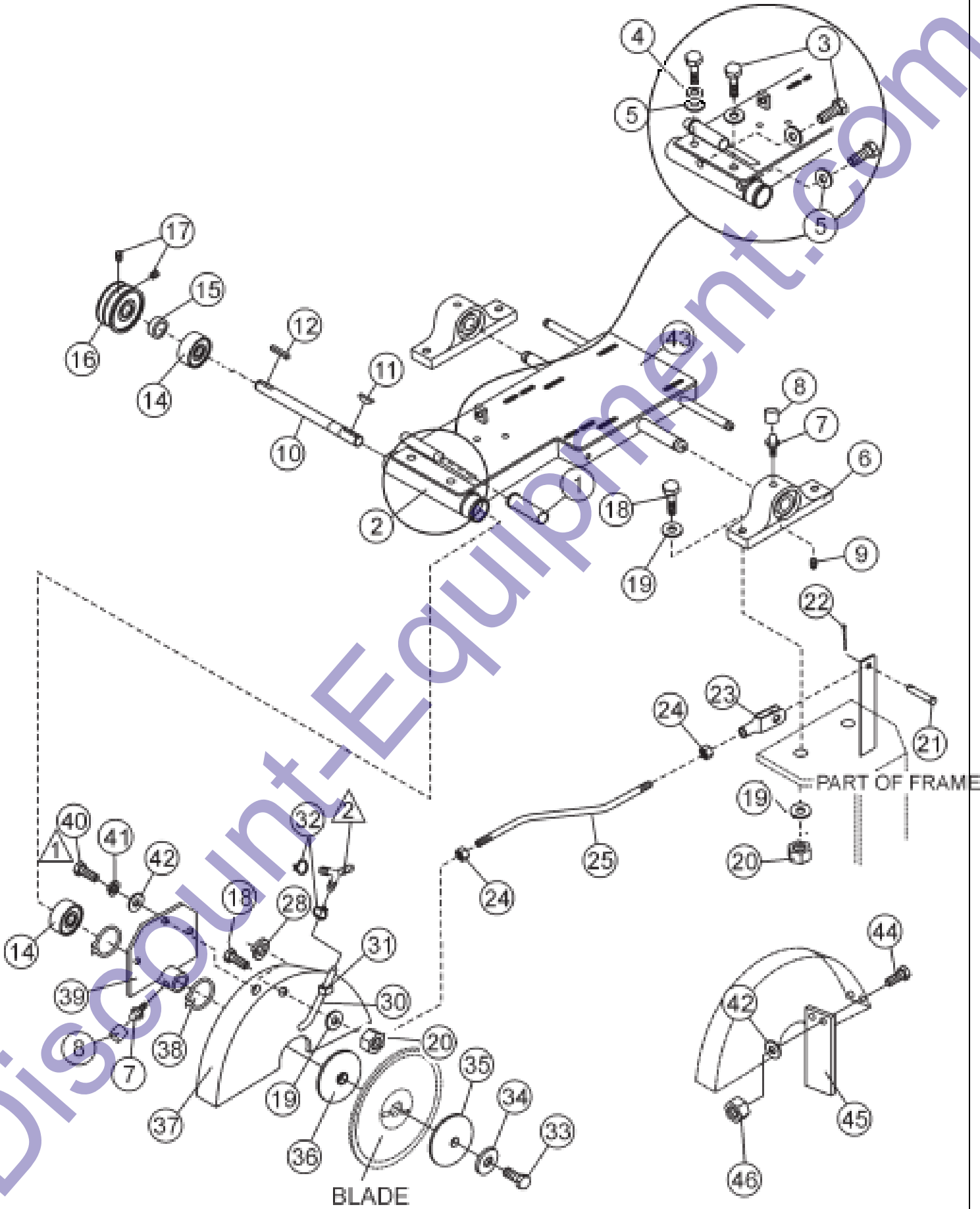
JACKSHAFT ASSEY BREAK DOWN				
ITEM	M.I.D. #	PART #	DESCRIPTION	BBS20
1	04143VX375	0414BN01JF	SPINDLE V-BELT 3VX375	2
2	POCR2581002R	0414CR01JF	ENGINE / JACKSHAFT PULLEY 2-5/8" O.D. GASOLINE ONLY	3
3	0414CH01JF		PILLOW BLOCK, 1"	2
4	OPFR014014		ALLEN SCREW, 1/4"	6
5	0414CC01JF		KEY SQUARE 1/4" X1-1/4"	3
6	0414CR02JF		JACKSHAFT 1" X 15-1/8"	1
7	0414PL01JF		SUPPORT PLATE, JACKSHAFT	1
8	0414LA01GB		MOUNTING BRACKET, BELT GUARD	1
9	TOCD038100	C138	BOLT HEXHD, 1/4" X 1"	4
10	RNRX038GAL		LOCK WASHER, 3/8"	8
11	RNPX038GAL		WASHER PLAIN, 3/8"	8
12	TOCD038114		BOLT HEXHD, 1/4" X 1-1/4"	4
13	TOCD038400		BOLT HEXHD, 1/4" X 4"	2
14	TCCS038GAL	T114	LOCK NUT, 3/8"	2
15	0414BN02JF		DRIVE BELT 3VX250	2
16	0414LA02GB		BELT GUARD MOUNT	1

STEP PEDAL ASSEY



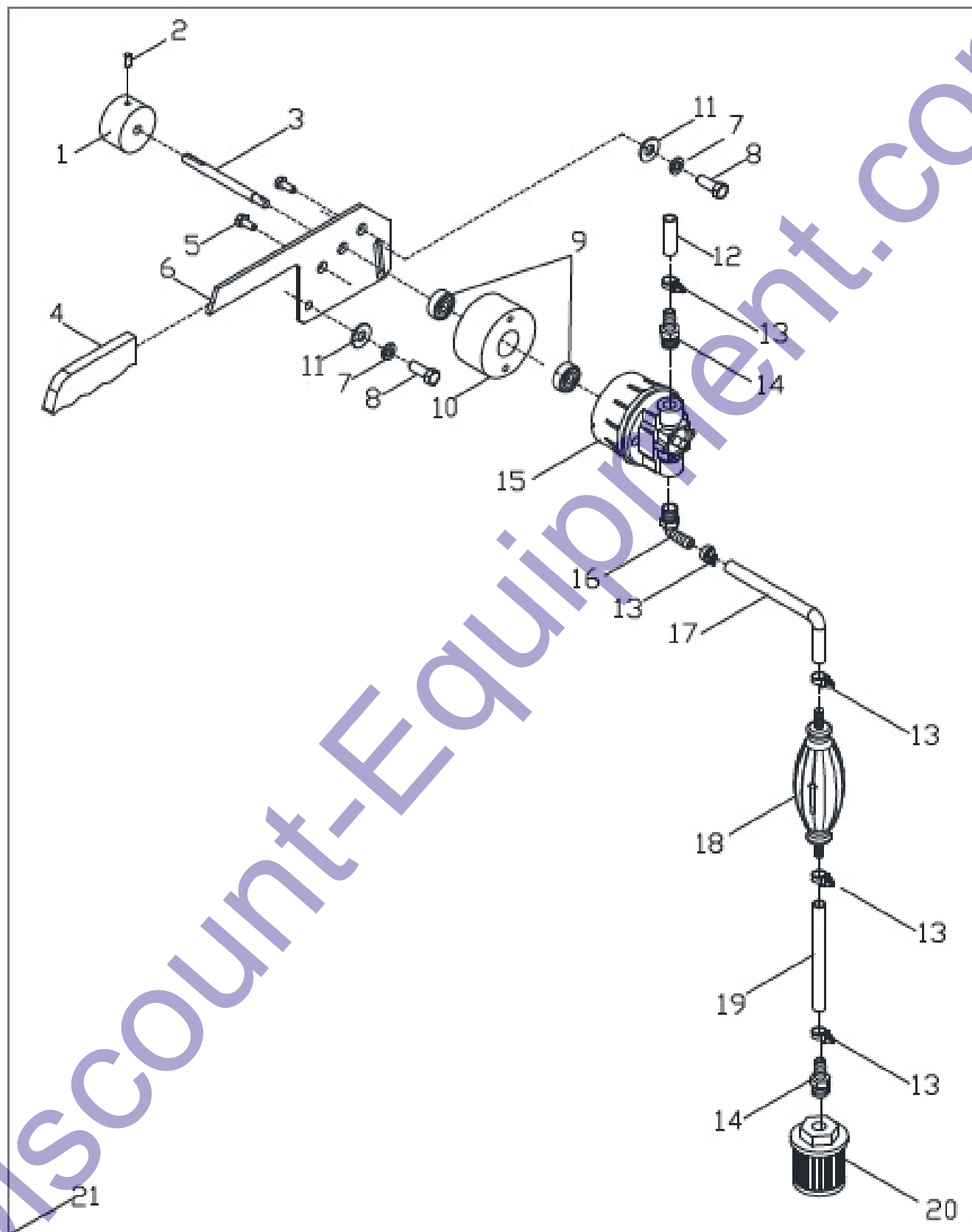
STEP PEDAL ASSEY				
ITEM	M.I.D. #	PART #	DESCRIPTION	BBS20
1	RNPX100GAL		WASHER PLAIN, 1"	4
2	0414RF01DP		SNAP RING 1"	2
3	TOCD012200		BOLT HEXHD, 1/2" X 2"	3
4	RNPX012GAL		WASHER PLAIN, 1/2"	7
5	TCCS012GAL		LOCK NUT, 1/2"	4
6	0414CO01DP		PIVOT BRACKET, MOTOR PLATE	1
7	0414CO02DP		PIVOT BRACKET, STEP PEDAL	1
8	TOCD012700		BOLT HEXHD, 1/2" X 7"	1
9	0414CO03DP		PIVOT TUBE	1
10	0414CR01DP		ROD, BLADE HEIGHT ADJ.	1
11	0414CO04DP		FOOT PEDAL	1
12	0414RF02DP		PEDAL BELLOWS	1
13	0414RF03DP		CLAMP HOSE	1
14	TCCS056GAL	T148	LOCK NUT, 5/16"	2
15	RNPX056GAL		WASHER PLAIN, 5/16"	2
16	0414CH01DP		5/8" BEARING FLANGED PILLOW BLOCK, BBS20	1
17	TOCD056112		BOLT HEXHD, 5/16" X 1-1/2"	2
18	0414NY01DP		ADJUSTABLE HANDLE CAP	1
19	0414RF05DP		CAP NUT 5/8"	1
20	0414SO01DP		ADJUSTABLE HANDLE BODY PLATE	1
21	RNPX058GAL		WASHER PLAIN, 5/8"	1
22	0414RF06DP		EXTENSION SPRING	2
23	0000GRH200		GREASE FITTING, 1/8 NPT	1

SPINDLE BLADE ASSEY



ENGINE SPINDLE BLADE ASSEY				
ITEM	M.I.D. #	PART #	DESCRIPTION	BBS20
1	0000RF01RJ	T166	GRIP HANDLE	1
2	0414BH01CO		TUBE SPINDLE ASSAY W/FITTING	1
3	TOCD056100		BOLT HEXHD, 5/16" X 1"	4
4	RNRX056GAL		LOCK WASHER, 5/16"	4
5	RNPX056GAL		WASHER PLAIN, 5/16"	4
6	0414CH01CO		PILLOW BLOCK, 1" (INCLUDES 7,8 Y 9)	2
7	0000GRH200	T-216	GREASE FITTING, 1/8 NPT	1
8	N/A		GREASE FITTING CAP, (INCLUDED ON 0000GRH200)	3
9	N/A		SET SCREW, PILLOW BLOCK (INCLUDED ON 0414CH01CO)	2
10	0414CR01CO		SHAFT SPINDLE	1
11	0414CC01CO		WOODRUFF KEY	1
12	0414CC02CO		KEY 3/16 X 1-1/4 IN.	1
14	0414RF01CO		BEARING 5204RS	2
15	0414CR02CO		SPACER 1/2", BBS20	1
16	0414CR03CO		PULLEY SPINDLE 3-1/8" O.D. GAS UNITS ONLY	1
16	?	?	PULLEY SPINDLE ELECTRIC UNITS ONLY	1
17	OPFR014014		ALLEN SCREW, 1/4"	2
18	TOCD038134		BOLT, HEXHD, 3/8" X 1-3/4"	5
19	RNPX038GAL	T112	WASHER PLAIN, 3/8"	5
20	TCCS038GAL	T114	LOCK NUT, 3/8"	5
21	0414CR04CO		PIN, CLEVIS 3/8 X 1-1/8 IN	1
22	SC3116200GAL	T111	PIN COTTER, 3/16 X 2	1
23	0414RF01GD		CONNECTING ADJUSTABLE YOKE ROD	1
24	TCCN038GAL	T410	NUT HEX, 3/8"	2
25	0414CR01GD		BLADE GUARD TIE ROD	1
28	RNRX038GAL		LOCK WASHER, 3/8"	2
30	0414RF02GD		BLADE COOLER HOSE 1/4"	2
31	0414RF03GD		CLAMP HOSE, BLADE GUARD	2
32	0414RF04GD		CLAMP HOSE	2
33	TOFD038114		HEX BOLT, 3/8" x 1-1/4" NF	1
34	RNRX038GAL	T113	LOCK WASHER, 3/8"	1
35	0414CR05CO		OUTER FLANGE	1
36	0414CR06CO		OUTER INNER	1
37	0414CO01GD		BLADE GUARD ASSAY	1
38	0414RF05GD		SNAP RING	2
39	0414CO02GD		MOUNTING PLATE, BLADE GUARD	1
40	TOCD014112		BOLT, HEXHD, 1/4" X 1-1/2"	3
41	RNRX014GAL		LOCK WASHER, 1/4"	3
42	RNPX014GAL		WASHER PLAIN, 1/4"	5
43	0414CO02BM		MOTOR PLATE ASSAY	1
44	TOCD014100		BOLT, HEXHD, 1/4" X 1"	2
45	0414HN01GD		SPLASH SHIELD	1
46	TCCS014GAL		LOCK NUT, 1/4"	1

WATER PUMP (GAS MODEL) ASSEY



WATER PUMP (GAS MODEL) ASSEY				
ITEM	M.I.D. #	PART #	DESCRIPTION	BBS20
1	0414FA01SA		PULLEY WATER PUMP 2"	1
2	0414RF01SA		SCREW, SHS 1/4"-20 X 1/2"	4
3	0414RF02SA		SHAFT PUMP	1
4	0414RF03SA		GRIP, PUMP HANDLE	1
5	0414RF04SA		SCREW, RHM 1/4"-20 X 5/8"	2
6	0414RF05SA		BRACKET, PUMP MOUNTING	1
7	0414RF06SA		WASHER LOCK, 3/8"	2
8	0414RF07SA		SCREW, HHC 3/8"-16 X 1"	2
9	0414RF08SA		BEARING, BALL	2
10	0414RF09SA		CAP, WATER PUMP	1
11	0414RF10SA		WASHER, FLAT 3/8"	2
12	0414RF11SA		HOSE, BRAIDED PVC 3/8" X 5/8"	1
13	0414RF12SA		HOSE CLAMP	4
14	0414RF13SA		FITTING, PLASTIC STR 6 BARB	2
15	0414RF14SA		BASE, WATER PUMP	1
16	0414RF15SA		FITTING, PLASTIC 90 6 BARB	1
17	0414RF16SA		HOSE, BRAIDED PVC 3/8" X 5/8"	1
18	0414RF17SA		BULB, PRIMER	1
19	0414RF18SA		HOSE, BRAIDED PVC 3/8" X 5/8"	1
20	0414RF19SA		STRAINER, INLET 3/8"	1
21	0414RF20SA		WATER PUMP KIT	1

Discount Equipment

Discount-Equipment.com is your online resource for commercial and industrial quality parts and equipment sales.

Locations:

Florida (West Palm Beach): [561-964-4949](tel:561-964-4949)

Outside Florida TOLL FREE: [877-690-3101](tel:877-690-3101)

Need parts? Check out our website at www.discount-equipment.com

Can't find what you need?

Click on this link: <http://www.discount-equipment.com/category/5443-parts/> and fill out the request form.

Please have the machine model and serial number available in order to help us get you the correct parts. One of our experienced staff members will get back to you with a quote for the right part that your machine needs.

We sell worldwide for the brands: Genie, Terex, JLG, MultiQuip, Mayco, Toro/Stone, Diamond Products, Magnum, Airman, Mustang, Power Blanket, Nifty Lift, Atlas Copco, Chicago Pneumatic, Allmand Brothers, Essick, Miller Spreader, Skyjack, Lull, Skytrak, Tsurumi, Husquvarna/Target, Whiteman-Concrete/Mortar, Stow-Concrete/Mortar, Baldor, Wacker, Sakai, Snorkel, Upright, Mi-T-M, Sullair, Neal, Basic, Dynapac, MBW, Weber, Bartell, Bennar Newman, Haulotte, Ditch Runner, Blaw-Knox, Himoina, Best, Buddy, Crown, Edco, Wyco, Bomag, Laymor, Terremite, Barreto, EZ Trench, Takeuchi, Basic, Bil-Jax, Curtis, Gehl, Heli, Honda, ICS/PowerGrit, Puckett, Waldon, ASV, IHI, Partner, Imer, Clipper, MMD, Koshin, Rice, Gorman Rupp, CH&E, Cat Pumps, Comet, General Pump, Giant, AMida, Coleman, NAC, Gradall, Square Shooter, Kent, Stanley, Tamco, Toku, Hatz, Kohler, Robin, Wisconsin, Northrock, Oztec, Toker TK, Rol-Air, Small Line, Wanco, Yanmar

New Equipment - Used Equipment - Rental Equipment - Parts and Accessories

Discount Equipment

www.discount-equipment.com

561-964-4949

Parts: wpbparts@Discount-Equipment.com

Sales: info@Discount-Equipment.com