



EQUIPMENT

Building the American Dream

WHY WE HAVE THE BEST MORTAR MIXER



MM6 / MM8 / MM10 / MM12 / MM12G / HM12 / HM16



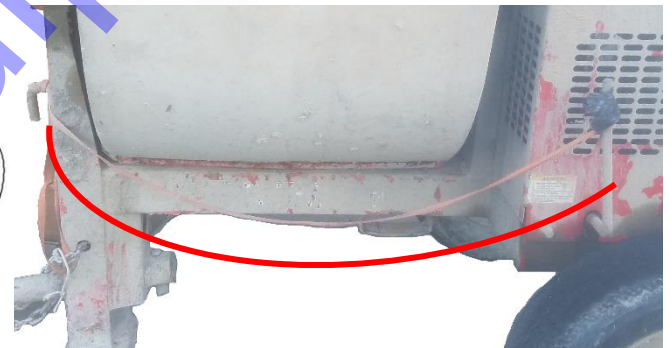
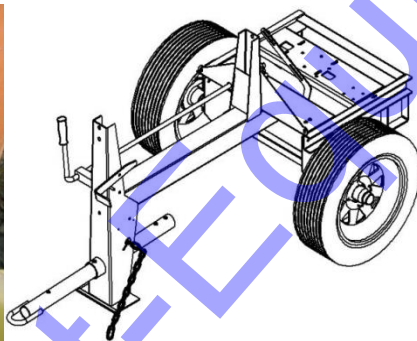
www.discount-equipment.com

WHY DO WE HAVE THE BEST MORTAR MIXER?

1) Our Mixers feature a cast iron pillow block and trunnion, secured with 4 bolts for strength added, compared to the tube and welded steel assembly used on competitors models for this essential part, just one of the features that make our mixers one of the strongest mixers on the market.



2) Unlike other mixers, the engagement handle on our mixer is routed through the frame tube, to protect it from dust, mortar, weather related issues and from forklift damage and is located on the frontal leg where dumping is done for an easier operation.



3) We use a $\frac{1}{2}$ " solid steel handle with plastic grips ends for ergonomic control for drum dumping with an offset bolt pattern for a stronger attachment compared to a bent tube.



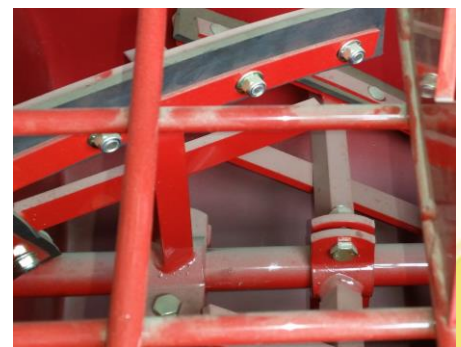
4) The main frame on our mixer is built from a single piece of boxed steel tubing for added strength, compared to a 2 pieces frame. Our tow hitch features an oversized hitch pin and safety bolt and we use thicker safety chains than the competition for



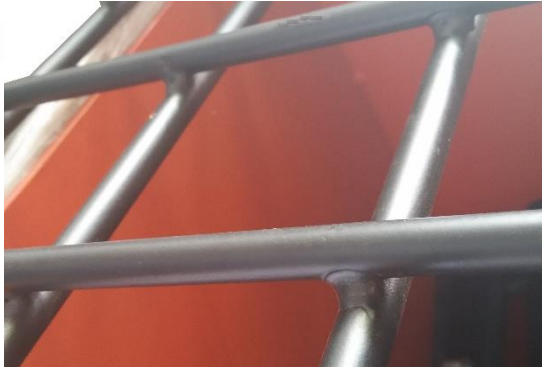
5) Our 46" heavy duty axle design with 4 gussets is much stronger and safer compared to just 2 or in some cases no gussets for additional support.



6) Our square main shaft is designed to provide a stronger grip that makes the paddles impossible to move, unlike round keyed shafts. We also use 3/8" rubber wipers compared to 1/8" thickness, and we provide optional spiral blades for the same cost.



7) We use a welded grid in our mixer compared with electric heat welding grids which do not last as long.



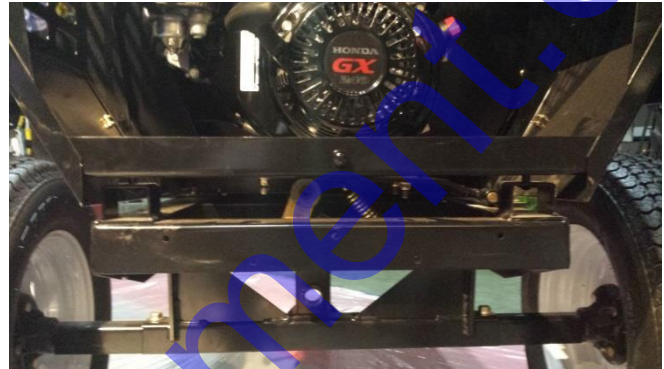
8) Rather than rubber hood latches, that become brittle due to exposure to weather, we use spring loaded steel latches for longer life.



9) Our transmission pillow block base is cut from rigid square tubing, rather than bent steel for added strength.



10) Our engine base is part of the mixer frame, and the paddles are engaged by the movement of a clutch (Point #6). Other systems tilt the engine to engage the paddles, if this is left disengaged while towing the engine bounces up and down on a tilting plate. By not doing this we extend the engine's life.



11) Our 1 piece cast iron bull gear is stronger than the 3 piece welded bull gear used on competitors' mixers, and our transmission is securely locked and mounted to the frame for no play, less wear and tear.



12) Our timing belt, it's a feature that provides longer life and stronger grip than a regular belt and our idler bearing is 2 times bigger than compared units.





CAPACITY	6, 8, & 12 cu. ft.	7, 9 & 12 cu. ft.	6, 8, 9.5, 12 & 16 cu. ft.
DRUM WRAP GAUGE	1/8" 7 & 9 cu. ft. 3/16" 12 cu. ft.	1/8" 7 & 9 cu. ft. 3/16" 12 cu. ft.	1/8" on 6 & 8 cu. ft. 3/16" on 9.5, 12 & 16 cu. ft.
END PLATES GAUGE	3/16" All Models	3/16" All Models	3/16" on 6, 8 & 9.5 cu.ft. 1/4" on 12 & 16 cu.ft.
SPIRAL BLADES OPTION	Yes, with an extra Cost	Not available	Yes, No extra cost
WELDED GRID	Electric Heat welding	Electric Heat welding	MIG Weld
POWER SYSTEM	HONDA with 6:1 Reducer	HONDA with 6:1 Reducer	HONDA with 6:1 Reducer
DRIVE SYSTEM	Constructed Pieces Bull Gear	Cast Iron Bull Gear	Cast Iron Bull Gear
ENGINE MOUNT	Works as an Idler Clutch (goes up and Down)	Secured on The Mixer Frame for extended life	Secured on The Mixer Frame for extended life
ENGAGEMENT SYSTEM	Frontal Idler Lever to Clutch Through Mixer Frame	Rear Idler Lever to Activate Clutch	Frontal Idler Lever to Clutch Through Mixer Frame
PADDLES MAIN SHAFT	Depends on Model (Round or Square)	Square	Square
RUBBER WIPERS	1/8"	3/8"	3/8"
PADDLES	1" Thickness MIG Weld	Cast Iron	1" Thickness MIG Weld
SEAL SYSTEM	Quadruple Seal & Bearing System Mounted in Hub	Gland Pressure Seal System Mounted on drum Bracket	Quadruple Seal & Bearing System Mounted in Hub
DRUM HUBS	-Housing hub with mortar dropping opening. -3 bolts Pattern	-1 Piece Steel Box Housing with Pressure Springs -4 bolts pattern	-Completely sealed, 1 piece bearing Housing Hub. -4 bolts Pattern
DRUM PILLOW BLOCK	Steel Welded construction	Cast Iron	Cast Iron
BEARINGS & SEALS	Life Time Warranty	Limited Warranty	Life Time Warranty
FRAME	Constructed Box	1 Piece	1 Piece
POCKET LIFTS	Depends on Model	Yes	Yes
AXLE FEATURES	Squared Shape, Reinforced with 2 Gussets, 36" to 46" Adjustable	1-5/8" Round Reinforced with 2 Gussets	Squared Shape Reinforced with 4 Gussets
SAFETY CHAIN SPECS	3/16" thickness	3/16" thickness	5/16" thickness
TIRES	12" for 6cu.ft. 13" for 8 cu.ft. and up	13" For all models	12" for 6cu.ft. 13" for 8 cu.ft. and up
HOOD LATCHES	Rubber	Rubber	Spring Loaded Steel
SHROUD TYPE	Hexagonal (Easy access)	Square	Square
ADDITIONAL FEATURES	-Knee to Dump -Dynamic Mix	U-Bolt End Paddles	-Handles Ergonomic Grips -Customized Specs available prior request
WARRANTY	-6 Months under any manufacturing defect -Life Time Drum Bearings & Seals	6 Months under any manufacturing defect.	-12 Months under any manufacturing defect. -Life Time Drum Bearings & Seals
EXTRA COSTS	Hitch	Hitch	None
PRICE RANGE	\$\$\$\$\$	\$\$\$\$	\$\$\$