

Technical specifications

CPLT

V17 KH US

Frequency: 60 Hz



CPLT V17 for reference

General description

The innovative light tower incorporates state-of-the-art surface mount device (SMD) LED lighting technology to provide excellent performance and efficiency. Operators at construction sites, events, mines, emergency applications and rental companies will be able to reduce their carbon footprint and operating costs while improving sustainability levels, with 20% more Light coverage than COB LED type.

Combining the use of a low-consumption diesel engine, the new CPLT V17 light tower offers users maximum efficiency setting to make the most of the energy available.

TECHNICAL INFORMATION

| Reference conditions | | |
|--|-----------------|---------------|
| Absolute inlet pressure | bar | 1 |
| Relative humidity | % | 30 |
| Air inlet temperature | °C | 25 |
| Performance data | | |
| Light Coverage (2 ft-c avg) | ft ² | 79,222 |
| Light Coverage (min 0.5 ft-c) | ft ² | 45,800 |
| Rated Frequency | Hz | 60 |
| Rated voltage | Vac | 120 |
| Power output | kW | 2.4 |
| Operating temperature (min/max) | °F | 14 / 120 |
| Altitude capability | ft | 11,483 |
| Relative air humidity maximum | % | 85 |
| Maximum sound power level (LWA)** | db(A) | 90 |
| Sound pressure level (LpA) at 23 ft | db(A) | 68 |
| Fuel tank capacity | gal | 26 |
| Oil service interval | h | 250 |
| Mast height | ft | 24 |
| Mast type / rotation | | Manual / 340° |
| Wind speed stability*** | mph | 68 |
| Fuel consumption at all floodlights ON | gal/h | 0.24 |
| Fuel autonomy at all floodlights ON | h | 105 |

**Complies with 2000/14/EC

***Consult Chicago Pneumatic for conditions reference.

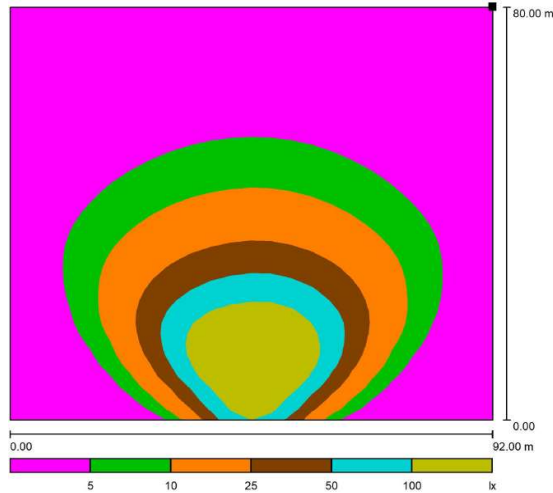
Chicago Pneumatic will keep the rights to change any data when necessary due to any reason.

| Canopy | | |
|--------------------------------|----------|----------------------------|
| Canopy | | RedRock |
| Type | | Undercarriage |
| Engine | | |
| Brand and Model | | Kohler KDW702 |
| Speed | rpm | 1,800 |
| Rated net output (PRP) | kW | 6 |
| Coolant system | | Coolant |
| Aspiration / Combustion system | | Natural / Direct Injection |
| Number of cylinders | Cylinder | 2 |
| Speed governor | | Mechanical |
| Capacity of oil sump | l | 4.7 |
| Capacity of cooling system | l | 1.1 |
| Electrical system | Vdc | 12 |
| Emission stage | | Tier 4f |
| Alternator | | |
| Brand and Model | | ACA132BL |
| Rated output | kVA | 4 |
| Protection degree | | IP23 |
| Insulation class | | H |
| Number of wires | Wires | 4 |

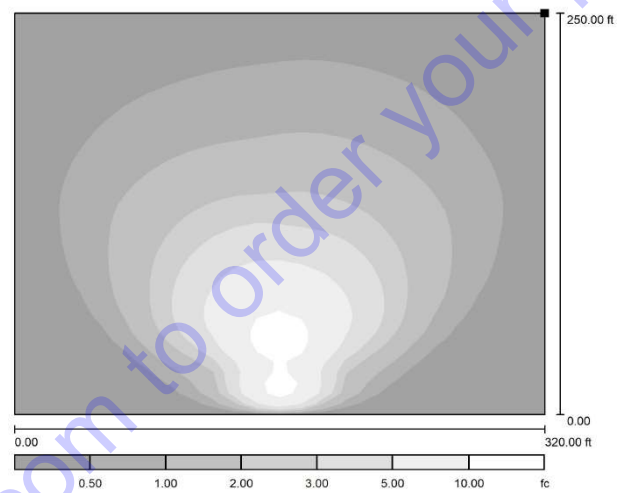
Go to Discount-Equipment.com to order your parts

Lamps

| | | |
|-------------------------|------|---------|
| Number of lights | Unit | 4 |
| Technology | | SMD LED |
| Floodlight power | W | 350 |
| Total Lumen | lm | 225,600 |



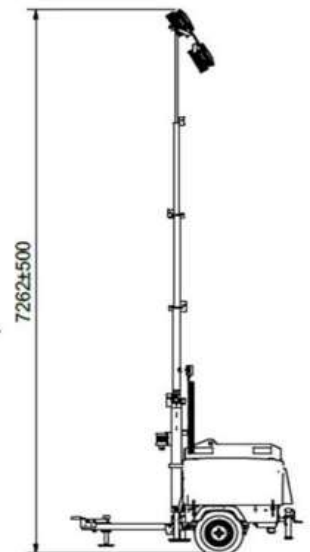
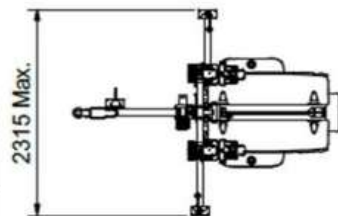
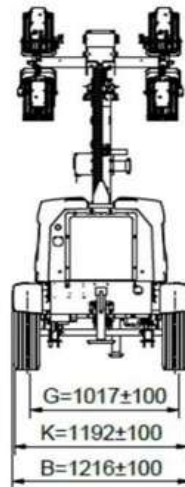
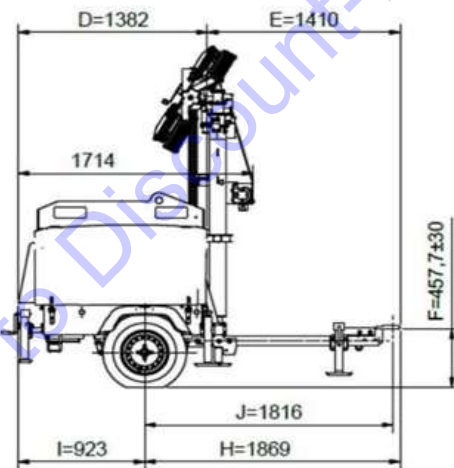
79,222 ft² avg 2 ft-c



45,800 ft² min 0.5 ft-c

Dimension and weight

| | | |
|--|-----|----------------|
| Length x Width x Height in transport mode | in | 75 x 48 x 91 |
| Length x Width x Height in operation mode | in | 110 x 91 x 305 |
| Weight (dry / wet) | lbs | 1548 / 1755 |



Mechanical Options

Spark Arrestor

Towing hitch combo

Towing hitch ball coupling 2 inch

Towing hitch ring 2.5 inch

Adjustable towing support

Electrical Options

Cubicle ELCB with universal socket 230V 50Hz | 240V 60Hz

Cubicle ELCB without socket

Cubicle with universal socket 230V 50Hz | 240V 60Hz

Road light system

E-Stop

Earth pin

Battery isolator

DC E-winch

Lc1003™



www.discount-equipment.com

Go to Discount-Equipment.com to order your parts

TO PURCHASE THIS PRODUCT PLEASE CONTACT US



**Equipment Financing and
Extended Warranties Available**



**Discount-Equipment.com is your online resource for
commercial and industrial quality parts and equipment sales.**

561-964-4949

visit us on line @ www.discount-equipment.com

Select an option below to find your Equipment

Search by Manufacturer

Search by Product Type

Request a Quote

We sell worldwide for the brands: Genie, Terex, JLG, MultiQuip, Mikasa, Essick, Whiteman, Mayco, Toro Stone, Diamond Products, Generac Magnum, Airman, Haulotte, Barreto, Power Blanket, Nifty Lift, Atlas Copco, Chicago Pneumatic, Allmand, Miller Curber, Skyjack, Lull, Skytrak, Tsurumi, Husquvarna Target, Stow, Wacker, Sakai, Mi-T-M, Sullair, Basic, Dynapac, MBW, Weber, Bartell, Bennar Newman, Haulotte, Ditch Runner, Menegotti, Morrison, Contec, Buddy, Crown, Edco, Wyco, Bomag, Laymor, EZ Trench, Bil-Jax, F.S. Curtis, Gehl Pavers, Heli, Honda, ICS/PowerGrit, IHI, Partner, Imer, Clipper, MMD, Koshin, Rice, CH&E, General Equipment, Amida, Coleman, NAC, Gradall, Square Shooter, Kent, Stanley, Tamco, Toku, Hatz, Kohler, Robin, Wisconsin, Northrock, Oztec, Toker TK, Rol-Air, APT, Wylie, Ingersoll Rand / Doosan, Innovatech, Con X, Ammann, Mecalac, Makinex, Smith Surface Prep, Small Line, Wanco, Yanmar