

Comparing the Competition



Trime wires protected with cover.



Competitor wires are exposed allowing for chance of wire being pulled from box, becoming tangled and or cut.

Comparing the Competition



Trime wires protected by support so no pulling occurs.



Competitor wires pull directly on electrical connection without support.

Comparing the Competition



Trime wires to lights are simplified.



Competitor have a lot wires to lights.

Go to Discount Equipment



Comparing the Competition



Trime lights are reinforced with heavy-duty brackets.



Competitor brackets are thin and bend easily.



www.discount-equipment.com

Comparing the Competition

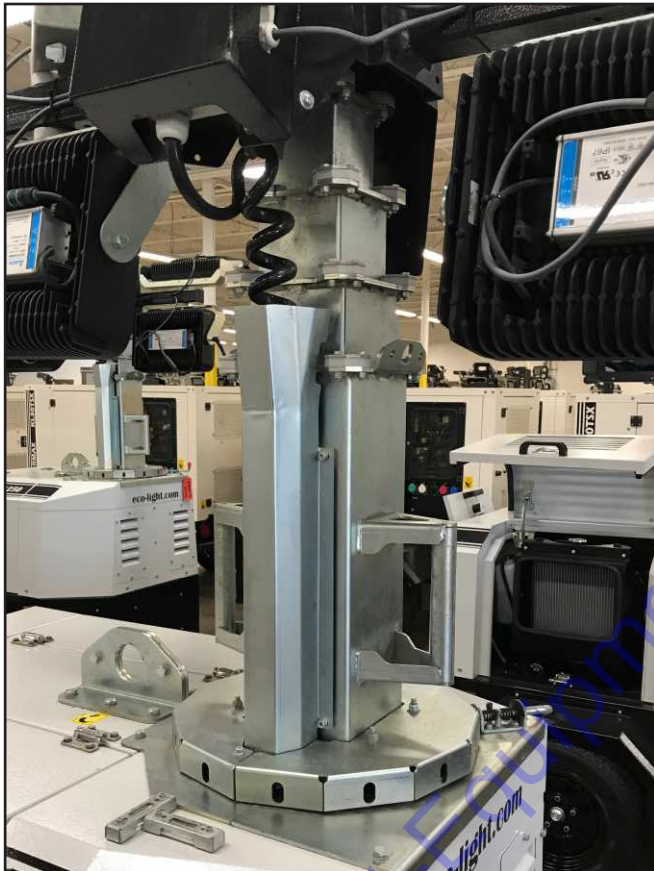


Trime body made of heavy-duty galvanized steel and powdered coated inside and out



Competitor body made of plastic.

Comparing the Competition



Trime's telescopic vertical galvanized mast is encased in unit which is easy to turn with positioning device.



Competitor mast exposed and hard to turn.



Comparing the Competition

Run Time/Fuel Cost

Trime

Full Run Time
288 hours

Fuel Capacity
45 gallons

Refuel in 1 Month
(based on 12 hour nightly run time)
1 time

Fuel Cost
\$3.00 per gallon

Monthly Fuel Cost
\$135

Labor to Refuel
(based on 1/2 hr refuel time @ \$100 per hr labor)
\$100

Total Operating Cost
\$235

Standard Metal Hallide

Full Run Time
75 hours

Fuel Capacity
45 gallons

Refuel in 1 Month
(based on 12 hour nightly run time)
5 times

Fuel Cost
\$3.00 per gallon

Monthly Fuel Cost
\$675

Labor to Refuel
(based on 1/2 hr refuel time @ \$100 per hr labor)
\$500

Total Operating Cost
\$1,175



www.discount-equipment.com