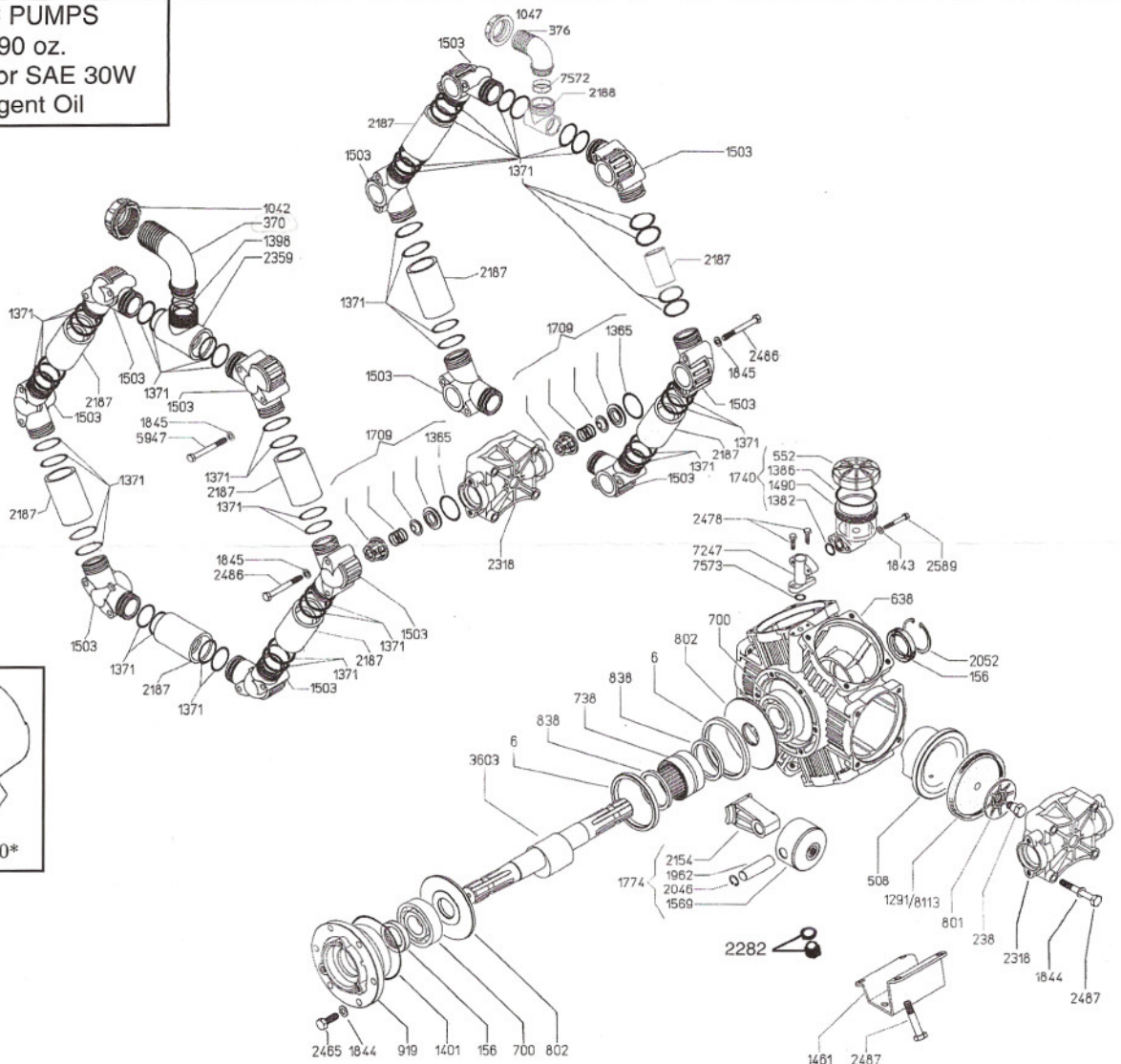


RO-210/CC - Exploded View Diagram & Parts List

RO-210/CC PUMPS

Require 90 oz.
UDOR LUBE, or SAE 30W
Non-detergent Oil



*Optional
Thru-Shaft
Protector

*Optional PTO
Safety Shield

REF#	PART#	DESCRIPTION	QTY	REF#	PART#	DESCRIPTION	QTY
6	0001.08	Retainer Ring	2	1774	6015.32	Piston & Rod Assembly	6
156	0007.02	Seal	2	1843	1403.07	Washer	2
238	0102.03	Diaphragm Bolt	6	1844	1403.09	Washer	30
370	0202.78	1-1/2" Hose Barb Elbow	1	1845	1403.10	Washer	36
378	0202.79	Suction Elbow 2"	1	1962	1502.02	Connecting Rod Pin	6
508	0206.36	Piston Sleeve	6	2046	1506.02	Snap Ring	12
552	0208.07	Oil Reservoir Cap	1	2052	1506.16	Snap Ring	1
638	0209.49	Pump Body	1	2154	1519.21	Connecting Rod	6
700	0214.04	Ball Bearing	2	2187	1601.16	Manifold Tube	10
738	0216.07	Bearing	1	2188	1601.17	Inlet Adapter	1
801	0301.07	Retainer Washer	6	2282	1603.50	Drain Plug	1
802	0301.28	Crankshaft Washer	2	2318	1604.36	Head	6
838	0302.59	Rod Spacer	2	2359	1605.20	Discharge Tube	1
919	0501.67	Bearing Flange	1	2465	1804.03	Bolt	6
1042	0604.50	Barb Nut	1	*2466	1804.06	Bolt	3
1047	0604.39	Nut	1	2478	1804.68	Bolt	2
1291	0903.02	Piston Diaphragm, BUNA-N Optional	6	2486	1804.79	Bolt	36
**1365	1101.01	O-Ring	12	2487	1804.25	Bolt	24
1371	1101.07	O-Ring	48	*2582	1805.04	Bolt	2
1382	1101.29	O-Ring	1	2589	1805.31	Bolt	2
1386	1101.33	O-Ring	1	3603	0002.87	Crankshaft	1
1398	1101.42	O-Ring	1	5947	1804.62	Bolt	12
1401	1101.58	O-Ring	1	7247	0501.91	Oil Reservoir Adapter	1
1461	1202.38	Mounting Rail	2	7572	1101.93	O-Ring	2
1490	1203.27	Oil Sight Glass	1	7573	1101.56	O-Ring	1
1503	1203.42	Discharge / Inlet Manifold	12	*7600	1403.36	Washer	3
1569	1205.06	Piston	6	*7650	1219.02	PTO Safety Shield Optional	1
1709	6006.08	Valve Assembly	12	*7653	1219.15	Shaft Protector Thru Shaft Optional	1
1740	6033.01	Oil Reservoir Assembly	1	**8113	0903.34	Piston Diaphragm, DESMOPAN Standard	6

** Parts Included in Diaphragm Repair Kit - #8700.44 (Also available in BUNA-N - #8700.29)