

**CP 4132**

See Note #2, Below

### General Safety Rules

- Before using the tool, read through these instructions carefully.
  - Also read the Red Safety Instructions thoroughly.
  - For your safety, the tool must not be modified.
    - Use approved personal safety equipment.
    - Use Atlas Copco Genuine Parts only.
- Always replace worn or damaged warning stickers.

### Notes:

- 1: Tighten bolts regularly, loose bolts will cause premature breakage
- 2: Add 5ml of oil into the air inlet, twice per shift. See table for recommended lubricants.

### Safety Warnings—Symbols in these Instructions

Pay special attention to sections in these documents dealing with safety. If you see either of these symbols:



**WARNING!** A danger, or hazardous procedure which CAN lead to serious injury, or worse.



**CAUTION** A risk, or risky procedure which CAN lead to injury, or damage to the tool.

### Before Starting

*Make sure you have:*

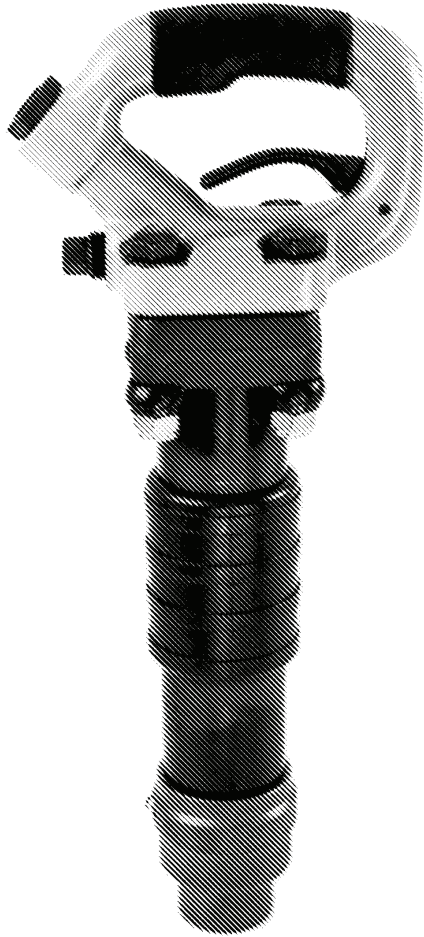
- the correct hose size and length.
- checked for damage to air line and couplings.
- all air connectons correctly tightened.
- the correct operating pressure (max 100 psi). Higher pressure can be dangerous and damage the tool.
- blown the air line clean.
- oiled the hammer.
- a steel with the correct shank size.
- checked that the steel is securely latched. Repair any tool with poor retention.
- use proper safety gear: boots, helmet, gloves and ear protection are the minimum.

### Recommended lubricants

Lubricant	Temperature range °C	Viscosity grade
Synthetic AIR-OIL	-30 to +50	ISO VG 46-100
Mineral Oil	-20 to +15	ISO VG 32-46
Mineral Oil	+15 to +35	ISO VG 46-100

# CP 4132

---



## Specifications CP 4132-4

<b>Net Weight</b>	7 kg	15 lbs
<b>Length</b>	432 mm	17 in
<b>Bore</b>	29 mm	1.125 in
<b>Stroke</b>	102 mm	4 in
<b>Blows per minute</b>	1800	1800
<b>Chuck Sizes</b>	14.8 mm Hex 17.5 mm Rnd	.580 in Hex .680 in Rnd
<b>Air Inlet (NPT)</b>	10 mm	3/8 in
<b>Air Consumption*</b>	.94 m <sup>3</sup> /m	33.23 cfm

## Specifications CP 4132

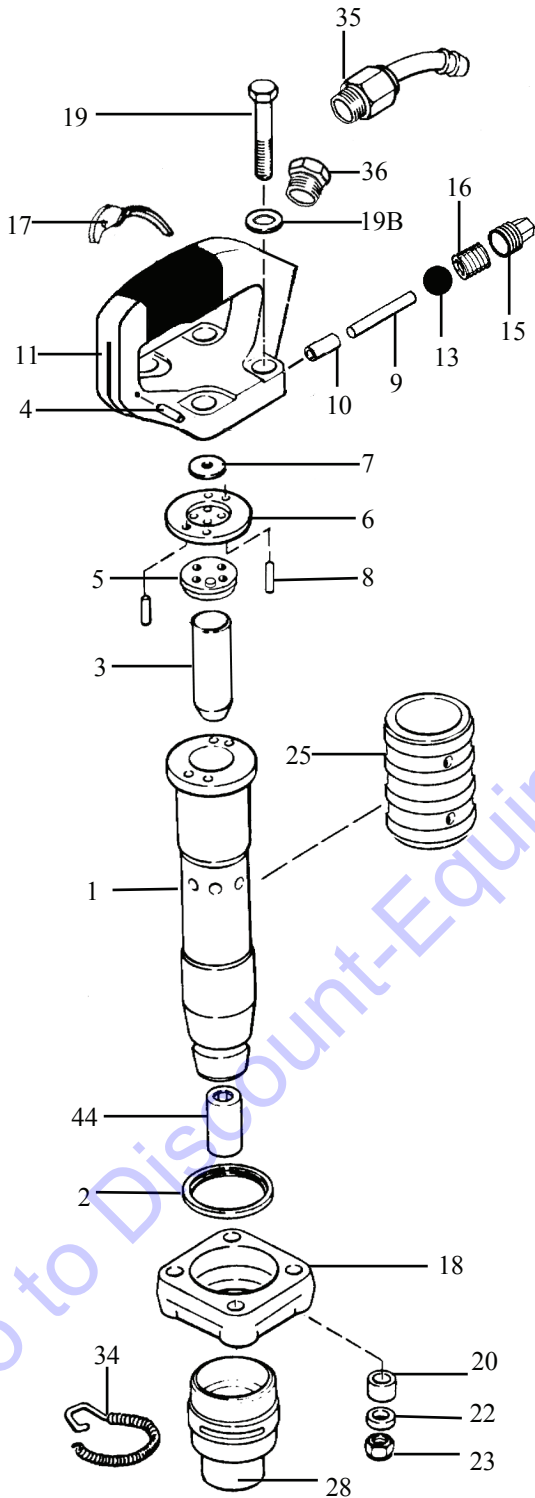
<b>Net Weight</b>	6.4 kg	14 lbs
<b>Length</b>	387 mm	15.25 in
<b>Bore</b>	29 mm	1.125 in
<b>Stroke</b>	75 mm	3 in
<b>Blows per minute</b>	2200	2200
<b>Chuck Sizes</b>	14.8 mm Hex 17.5 mm Rnd	.580 in Hex .680 in Rnd
<b>Air Inlet (NPT)</b>	10 mm	3/8 in
<b>Air Consumption*</b>	.89 m <sup>3</sup> /m	31.5 cfm

\*estimated



# CHIPPING HAMMER

# CP 4132 -4

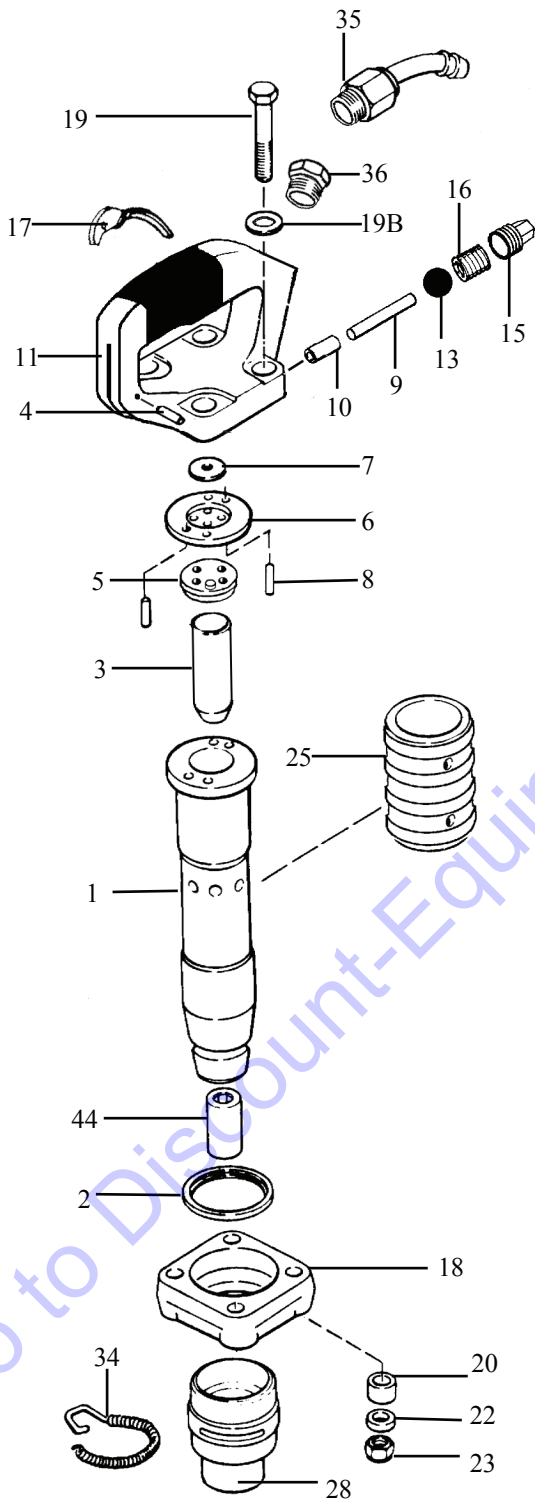


INDEX	PART	DESCRIPTION
1	9245-9983-62	BARREL 4"
2	9245-9963-10	LOCK RING BUMPER
3	9245-9963-63	PISTON 4"
4	9245-9983-64	FULCRUM PIN
5	9245-9963-60	BUMPER VALVE SEAT
6	9245-9983-65	VALVE SPACER
7	9245-9963-50	VALVE PLATE
8	9245-9964-20	VALVE DOWEL (2)
9	9245-9983-67	PUSH PIN
10	9245-9967-00	PUSH PIN BUSHING
11	9245-9983-68	HANDLE BARE
NS	9245-9983-69	HANDLE COMPLETE
13	9245-9964-80	THROTTLE VALVE BALL
15	9245-9965-40	THROTTLE VALVE PLUG
16	9245-9965-30	THROTTLE VALVE SPRING
17	9245-9987-14	TRIGGER
18	9245-9983-70	FLANGE
19	9245-9983-71	HANDLE BOLT ( 4 )
19B	9245-9983-72	SPRING WASHER ( 4 )
20	9245-9983-73	BUMPER WASHER ( 4 )
22	9245-9983-74	HANDLE BOLT SPACER ( 4 )
23	9245-9983-75	HANDLE BOLT NUT ( 4 )
25	9245-9964-40	EXHAUST DEFLECTOR
28	9247-9853-50	OVAL COLLAR RETAINER
34	9245-9964-90	RETAINER SPRING
35	9245-9965-00	SWIVEL(7/8 - 24, 1/2" HOSE BARB)
36	9245-9965-20	HANDLE BUSHING
44	9245-9965-80	BUSHING FOR ROUND SHANK (.680")
44	9245-9965-90	BUSHING FOR HEX SHANK (.580")

Go to Discount-Equipment.com for your parts

# CHIPPING HAMMER

# CP 4132



INDEX	PART	DESCRIPTION
1	9245-9983-61	BARREL 3"
2	9245-9963-10	LOCK RING BUMPER
3	9245-9963-30	PISTON 3"
4	9245-9983-64	FULCRUM PIN
5	9245-9963-60	BUMPER VALVE SEAT
6	9245-9983-65	VALVE SPACER
7	9245-9963-50	VALVE PLATE
8	9245-9964-20	VALVE DOWEL (2)
9	9245-9983-67	PUSH PIN
10	9245-9967-00	PUSH PIN BUSHING
11	9245-9983-68	HANDLE BARE
NS	9245-9983-69	HANDLE COMPLETE
13	9245-9964-80	THROTTLE VALVE BALL
15	9245-9965-40	THROTTLE VALVE PLUG
16	9245-9965-30	THROTTLE VALVE SPRING
17	9245-9987-14	TRIGGER
18	9245-9983-70	FLANGE
19	9245-9983-71	HANDLE BOLT ( 4 )
19B	9245-9983-72	SPRING WASHER ( 4 )
20	9245-9983-73	BUMPER WASHER ( 4 )
22	9245-9983-74	HANDLE BOLT SPACER ( 4 )
23	9245-9983-75	HANDLE BOLT NUT ( 4 )
25	9245-9964-40	EXHAUST DEFLECTOR
28	9247-9853-50	OVAL COLLAR RETAINER
34	9245-9964-90	RETAINER SPRING
35	9245-9965-00	SWIVEL(7/8 - 24, 1/2" HOSE BARB)
36	9245-9965-20	HANDLE BUSHING
44	9245-9965-80	BUSHING FOR ROUND SHANK (.680")
44	9245-9965-90	BUSHING FOR HEX SHANK (.580")

# PARTS FINDER

**Search Website  
by Part Number**



**Search Manual  
Library For Parts  
Manual & Lookup Part  
Numbers – Purchase  
or Request Quote**

**Search Manuals**

Enter your information to help us find the right parts manual for your machine.

\* Brand:

\* Model:

\* Serial:

\* Part Number:

SEARCH

**Can't Find Part or  
Manual? Request Help  
by Manufacturer,  
Model & Description**

**Parts Order Form**

Please fill in the following information to help us find the right part for your machine.

Manufacturer:	<input type="text"/>
Model:	<input type="text"/>
Description:	<input type="text"/>
Part Number:	<input type="text"/>
Quantity:	<input type="text"/>
Notes:	<input type="text"/>

Submit

Discount-Equipment.com is your online resource for quality parts & equipment.

Florida: **561-964-4949** Outside Florida TOLL FREE: **877-690-3101**

**Need parts?**

Click on this link: <http://www.discount-equipment.com/category/5443-parts/> and choose one of the options to help get the right parts and equipment you are looking for. Please have the machine model and serial number available in order to help us get you the correct parts. If you don't find the part on the website or on one of the online manuals, please fill out the request form and one of our experienced staff members will get back to you with a quote for the right part that your machine needs.

We sell worldwide for the brands: Genie, Terex, JLG, MultiQuip, Mikasa, Essick, Whiteman, Mayco, Toro Stone, Diamond Products, Generac Magnum, Airman, Haulotte, Barreto, Power Blanket, Nifty Lift, Atlas Copco, Chicago Pneumatic, Allmand, Miller Curber, Skyjack, Lull, Skytrak, Tsurumi, Husquvarna Target, Stow, Wacker, Sakai, Mi-T-M, Sullair, Basic, Dynapac, MBW, Weber, Bartell, Bennar Newman, Haulotte, Ditch Runner, Menegotti, Morrison, Contec, Buddy, Crown, Edco, Wyco, Bomag, Laymor, EZ Trench, Bil-Jax, F.S. Curtis, Gehl Pavers, Heli, Honda, ICS/PowerGrit, IHI, Partner, Imer, Clipper, MMD, Koshin, Rice, CH&E, General Equipment, Amida, Coleman, NAC, Gradall, Square Shooter, Kent, Stanley, Tamco, Toku, Hatz, Kohler, Robin, Wisconsin, Northrock, Oztec, Toker TK, Rol-Air, APT, Wylie, Ingersoll Rand / Doosan, Innovatech, Con X, Ammann, Mecalac, Makinex, Smith Surface Prep, Small Line, Wanco, Yanmar