

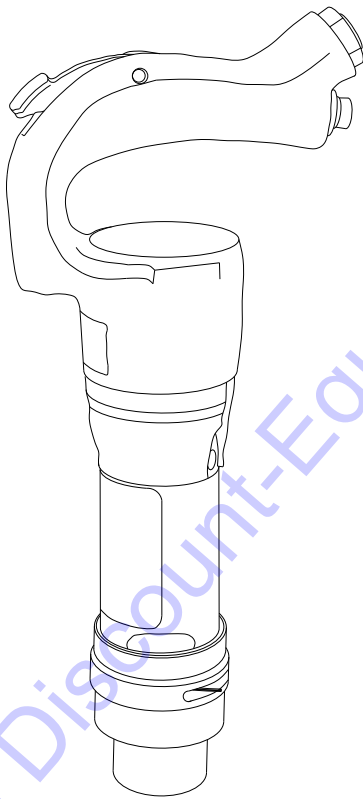


# Spare Parts List

CP 4123 Chipping Hammer



[www.discount-equipment.com](http://www.discount-equipment.com)



Go to [Discount-Equipment.com](http://Discount-Equipment.com) to order your parts



# PARTS FINDER

**Search Website  
by Part Number**



**Search Manual  
Library For Parts  
Manual & Lookup Part  
Numbers – Purchase  
or Request Quote**

**Search Manuals**

Enter your information to help us find the right parts manual for your machine.

\* Brand:

\* Model:

\* Serial:

\* Part Number:

SEARCH

**Can't Find Part or  
Manual? Request Help  
by Manufacturer,  
Model & Description**

**Parts Order Form**

Please fill in the following information to help us find the right part for your machine.

Manufacturer:	<input type="text"/>
Model:	<input type="text"/>
Description:	<input type="text"/>
Part Number:	<input type="text"/>
Quantity:	<input type="text"/>
Notes:	<input type="text"/>

Submit

Discount-Equipment.com is your online resource for quality parts & equipment.

Florida: **561-964-4949** Outside Florida TOLL FREE: **877-690-3101**

**Need parts?**

Click on this link: <http://www.discount-equipment.com/category/5443-parts/> and choose one of the options to help get the right parts and equipment you are looking for. Please have the machine model and serial number available in order to help us get you the correct parts. If you don't find the part on the website or on one of the online manuals, please fill out the request form and one of our experienced staff members will get back to you with a quote for the right part that your machine needs.

We sell worldwide for the brands: Genie, Terex, JLG, MultiQuip, Mikasa, Essick, Whiteman, Mayco, Toro Stone, Diamond Products, Generac Magnum, Airman, Haulotte, Barreto, Power Blanket, Nifty Lift, Atlas Copco, Chicago Pneumatic, Allmand, Miller Curber, Skyjack, Lull, Skytrak, Tsurumi, Husquvarna Target, Stow, Wacker, Sakai, Mi-T-M, Sullair, Basic, Dynapac, MBW, Weber, Bartell, Bennar Newman, Haulotte, Ditch Runner, Menegotti, Morrison, Contec, Buddy, Crown, Edco, Wyco, Bomag, Laymor, EZ Trench, Bil-Jax, F.S. Curtis, Gehl Pavers, Heli, Honda, ICS/PowerGrit, IHI, Partner, Imer, Clipper, MMD, Koshin, Rice, CH&E, General Equipment, Amida, Coleman, NAC, Gradall, Square Shooter, Kent, Stanley, Tamco, Toku, Hatz, Kohler, Robin, Wisconsin, Northrock, Oztec, Toker TK, Rol-Air, APT, Wylie, Ingersoll Rand / Doosan, Innovatech, Con X, Ammann, Mecalac, Makinex, Smith Surface Prep, Small Line, Wanco, Yanmar

Go to Discount-Equipment.com to order your parts

**2005-01**  
**No. 9800 0521 01**  
© Copyright  
STOCKHOLM • SWEDEN

**Contents**

**Pages**

General information..... 4

Exploded views and tables ..... 6, 7

*Go to Discount-Equipment.com to order your parts*

## GENERAL INFORMATION

Welcome! Protect your investment in the world's finest air tools. Use genuine CP replacement parts.

The purchase of replacement parts for your CP tools deserves the same good judgment that resulted in the buying of the tools themselves. Each genuine CP part is made from carefully selected and inspected material, subjected to sophisticated machinery and finishing processes and heat-treated to produce just the right combination of hardness, ductility and impact resistance for its intended use. All parts are manufactured concurrently with those used in production tools, and are identical to them. The use of parts other than genuine CP replacement parts can lead to substandard performance, early failure, possible damage of other parts and, in some instances, unsafe conditions.

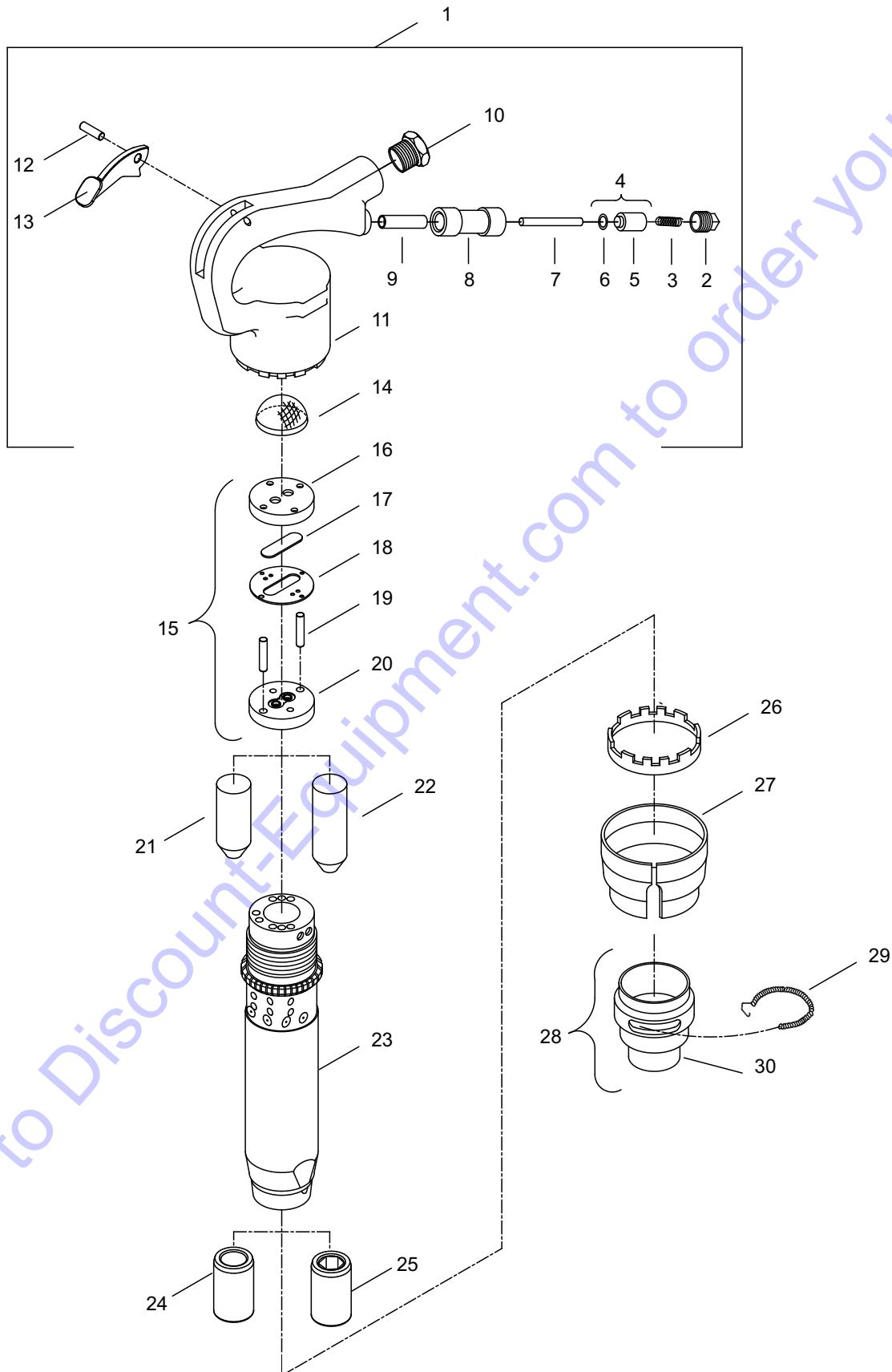
To reduce the risk of injury, read and understand the Operating Instructions manual and the percussion tool safety instructions before operating the tool.

CP 4123 is a pneumatic tool designed for rugged use in foundries, fabrication shops and construction applications. The different stroke versions offer the power levels necessary for a variety of uses, from light to medium chipping and trimming through heavy cutting.

Go to [Discount-Equipment.com](http://Discount-Equipment.com) to order your parts

Go to [Discount-Equipment.com](http://Discount-Equipment.com) to order your parts

**EXPLODED VIEW OF CP 4123 2R, CP 4123 2H  
CP 4123 3R, CP 4123 3H  
CP 4123 4R, CP 4123 4H**



Go to Discount-Equipment.com to order your parts

Ref. No.	Ordering No.	Qty.	Description
CP 4123 Chipping Hammer			
1	Z9983830	1	Handle assembly (Includes item No. 2, 3, 5, 6, 7, 8, 9, 10, 11, 12, 13 & 14)
2	P001873	1	Plug - Throttle valve
3	P001853	1	Spring - Throttle valve
4	P001768	1	Valve - Throttle complete (Includes item No. 5 & 6)
5		1	Valve - Throttle
6	P083071	1	O-ring
7	P070719	1	Pin - Throttle valve bush
8	P071318	1	Tube - Throttle valve
9	P070733	1	Bushing - Push pin
10	P009585	1	Bushing - Permanent
11		1	Handle
12	A043627	1	Pin - Throttle lever
13	P009818	1	Lever - Throttle
14	P092485	1	Screen
15	P077013	1	Valve case complete (Includes item No. 16, 17, 18, 19 & 20)
16	P071350	1	Lid - Upper valve case
17	P071358	1	Valve
18	P071352	1	Case - Valve
19	A041797	2	Pin - Dowel (7/32" x 7/8")
20	P071351	1	Lid - Lower valve case
21	P118662	1	Piston (for 2" or 3" stroke version)
22	P118678	1	Piston (for 4" stroke version)
23		1	Cylinder
24	P001550	1	Sleeve - Chisel (Round)
25	P001551	1	Sleeve - Chisel (Hex)
26	P128247	1	Collar - Lock
27	P071355	1	Shield - Lock
28	P107243	1	Sleeve - Retainer (Includes item No. 29 & 30)
29	P070994	1	Spring - Lock coil
30		1	Sleeve - Retainer





[www.discount-equipment.com](http://www.discount-equipment.com)

2005-01  
No. 9800 0521 01  
© Copyright  
Stockholm, Sweden



# PARTS FINDER

**Search Website  
by Part Number**



**Search Manual  
Library For Parts  
Manual & Lookup Part  
Numbers – Purchase  
or Request Quote**

**Search Manuals**

Enter your information to help us find the right parts manual for your machine.

\* Brand:

\* Model:

\* Serial:

\* Part Number:

SEARCH

**Can't Find Part or  
Manual? Request Help  
by Manufacturer,  
Model & Description**

**Parts Order Form**

Please fill in the following information to help us find the right part for your machine.

Manufacturer:	<input type="text"/>
Model:	<input type="text"/>
Description:	<input type="text"/>
Part Number:	<input type="text"/>
Quantity:	<input type="text"/>
Notes:	<input type="text"/>

Submit

Discount-Equipment.com is your online resource for quality parts & equipment.

Florida: **561-964-4949** Outside Florida TOLL FREE: **877-690-3101**

**Need parts?**

Click on this link: <http://www.discount-equipment.com/category/5443-parts/> and choose one of the options to help get the right parts and equipment you are looking for. Please have the machine model and serial number available in order to help us get you the correct parts. If you don't find the part on the website or on one of the online manuals, please fill out the request form and one of our experienced staff members will get back to you with a quote for the right part that your machine needs.

We sell worldwide for the brands: Genie, Terex, JLG, MultiQuip, Mikasa, Essick, Whiteman, Mayco, Toro Stone, Diamond Products, Generac Magnum, Airman, Haulotte, Barreto, Power Blanket, Nifty Lift, Atlas Copco, Chicago Pneumatic, Allmand, Miller Curber, Skyjack, Lull, Skytrak, Tsurumi, Husquvarna Target, Stow, Wacker, Sakai, Mi-T-M, Sullair, Basic, Dynapac, MBW, Weber, Bartell, Bennar Newman, Haulotte, Ditch Runner, Menegotti, Morrison, Contec, Buddy, Crown, Edco, Wyco, Bomag, Laymor, EZ Trench, Bil-Jax, F.S. Curtis, Gehl Pavers, Heli, Honda, ICS/PowerGrit, IHI, Partner, Imer, Clipper, MMD, Koshin, Rice, CH&E, General Equipment, Amida, Coleman, NAC, Gradall, Square Shooter, Kent, Stanley, Tamco, Toku, Hatz, Kohler, Robin, Wisconsin, Northrock, Oztec, Toker TK, Rol-Air, APT, Wylie, Ingersoll Rand / Doosan, Innovatech, Con X, Ammann, Mecalac, Makinex, Smith Surface Prep, Small Line, Wanco, Yanmar