



Count on it.

Parts Catalog

TX 1000 Compact Utility Loader

Model No. 22327—Serial No. 315000001 and Up

Model No. 22327G—Serial No. 315000001 and Up



Ordering Replacement Parts

To order replacement parts, please supply the part number, the quantity, and the description of each part desired.

Understanding Reference Numbers

Each identified part in an illustration has a reference number. The reference number for a part also appears in the parts list, along with other information about the part.

This catalog uses two special reference number formats, one to indicate parts in a service assembly and another to indicate the quantity of a given part in an illustration.

Service Assembly Reference Numbers

Parts in service assemblies have reference numbers in the form a:b. The a represents the reference number of the entire service assembly and the b represents a sequential number unique to each part within the service assembly.

For example, a wheel assembly might be identified by reference number 6, the tire by 6:1, the valve by 6:2, and the wheel by 6:3. When you order the assembly identified by reference number 6, you receive all parts identified by reference numbers 6:1, 6:2, and 6:3. However, you may also order any part individually. Reference numbers of this type appear in illustration and in parts lists.

Reference Numbers Indicating Quantity

In an illustration, if a reference number indicates more than one part, the reference number has the form nX y. The n represents the quantity of the part, the X is the multiplication symbol, and the y represents the reference number.

For example, in an illustration, the reference number 2X 37 means that two of the parts identified by reference number 37 are indicated.

List of Abbreviations

AR: as required

ASM: assembly

BBC: blade brake control

BHTF: button head thread forming

CARR: carriage

CCW: counter clockwise

CW: clockwise

DEG: degrees

DPA: Dual Point Adjustment

ECM: electronic control module

EXT: external

FH: flat head

GA: gauge

HD: heavy-duty

HF: hex flange

HH: hex head

HHF: hex head flange

HHFTF: hex head flange thread forming

HJ: hex jam

HLH: hex lag head

HOC: height-of-cut

HP: high pressure

HSBH: hex socket button head

HSFH: hex socket flat head

HSH: hex socket head

HWH: hex washer head

HWHTF: hex washer head thread forming

HYD: hydraulic

LH: left hand

LP: low pressure

LPG: Liquefied Petroleum Gas

NI: nylon insert

NPTF: national pipe thread fine

PFH: phillips flat head

PPH: phillips pan head

PPHTF: phillips pan head thread forming

PRH: phillips round head

PTH: phillips truss head

PTO: power-take-off

RH: right hand

ROPS: roll-over protection system

RRB: rear roller brush

SFH: slotted fillister head

SHH: slotted hex head

SHWH: slotted hex washer head

SPH: slotted pan head

SQH: square head

SRH: slotted round head

STD: standard

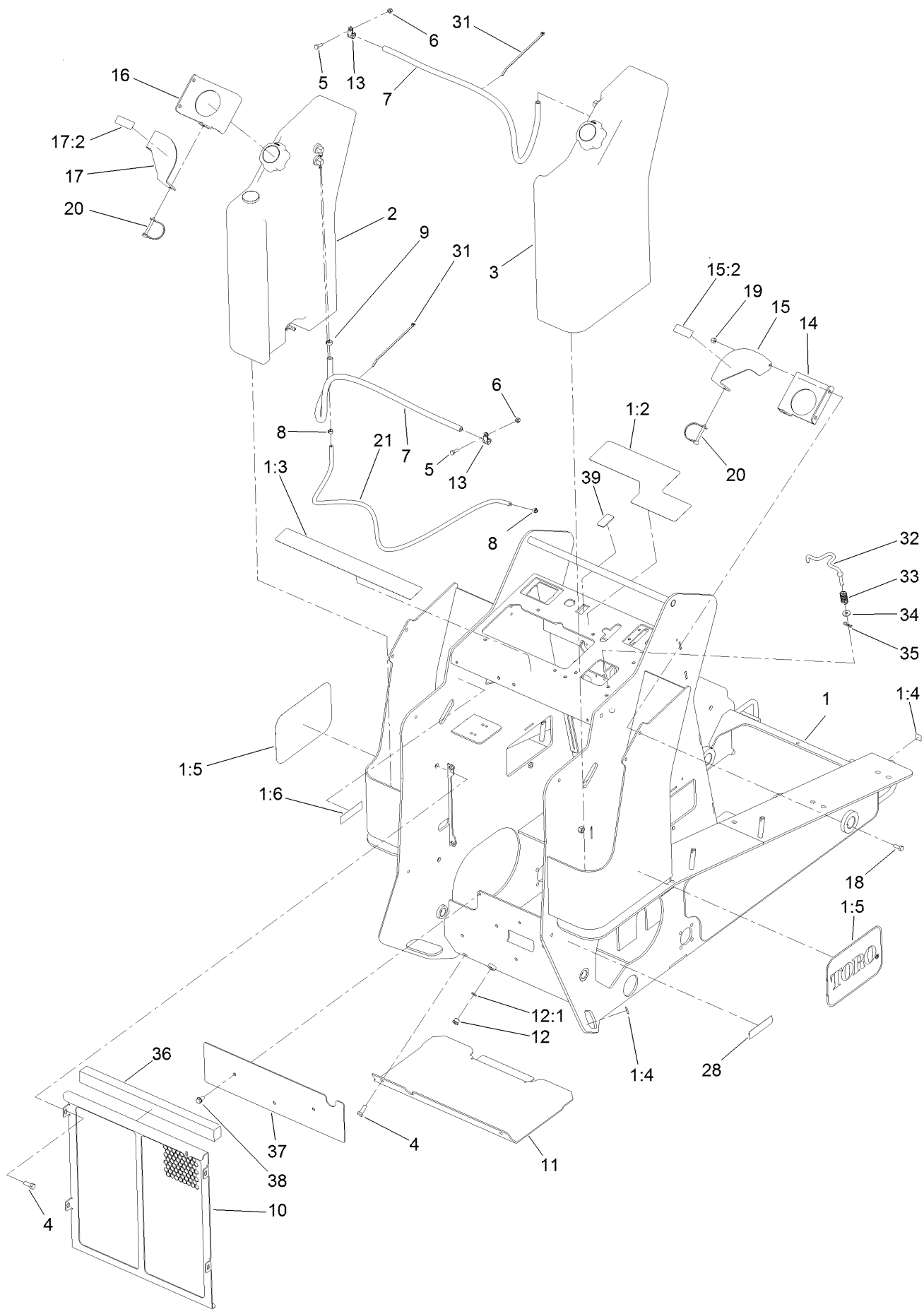
TAP: self tapping

TTH: torx truss head

Contents

Frame, Fuel Tank and Cover Assembly	4
LH Fuel Tank Assembly No. 130-1026	6
RH Fuel Tank Assembly No. 130-1027	8
Hydraulic Tank and Track Shaft Assembly	10
Track, Drive Wheel and Tensioner Assembly	12
Brake Assembly	14
Front Tower Assembly	16
Hydraulic Motor and Hose Assembly	18
Hydraulic Motor Assembly No. 130-7729	20
Radiator and Air Cleaner Assembly	22
Air Cleaner Assembly No. 93-2190	24
Engine Mount and Muffler Assembly	26
Tandem Pump and Gear Pump Assembly	28
Gear Pump Assembly No. 130-7731	30
Control Valve and Reference Bar Assembly	32
Control Valve Assembly No. 125-3704	34
2-Spool Valve and Auxiliary Valve Assembly	36
2-Spool Valve Assembly No. 130-7710	38
Auxiliary Valve Assembly No. 130-7562	40
Loader Arm Assembly	42
Hydraulic Cylinder Assembly No. 130-5176	44
Hydraulic Cylinder Assembly No. 130-5175	46
Hydraulic Cylinder Assembly No. 130-5195	48
Loader Hydraulic Assembly	50
Quick Attach Assembly	52
Front Cover and Side Panel Assembly	54
Hood Assembly	56
Manual Tube Assembly	58
Platform and Cushion Assembly	60
Electrical Assembly	62
Attachments and Accessories	64

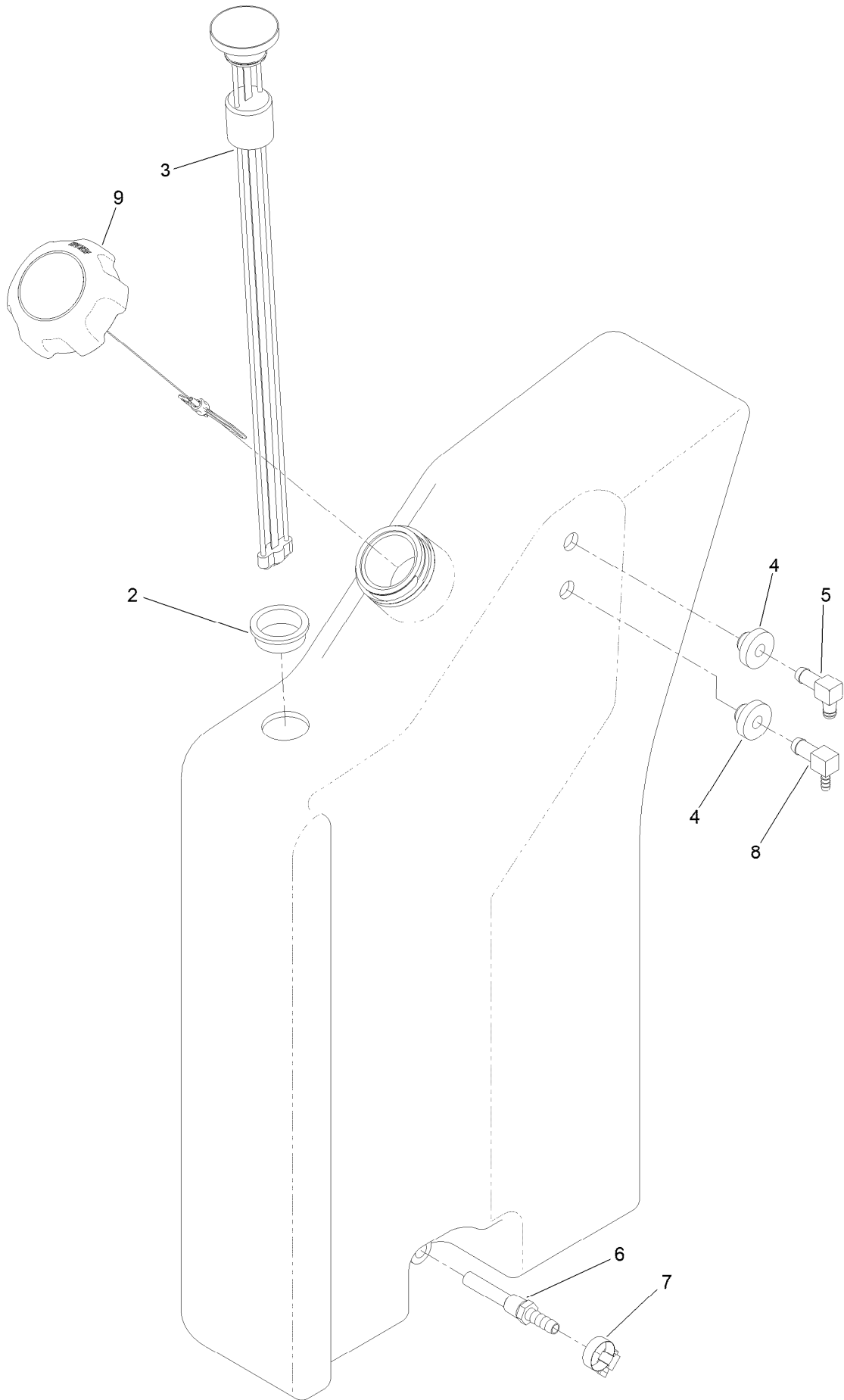
Frame, Fuel Tank and Cover Assembly



Frame, Fuel Tank and Cover Assembly (continued)

<i>Ref.</i>	<i>Part Number</i>	<i>Qty.</i>	<i>Description</i>	<i>Ref.</i>	<i>Part Number</i>	<i>Qty.</i>	<i>Description</i>
1	130-5314	1	Frame	15	130-5317	1	Plate-Lock, Fuel Cap, RH
1:2	131-0707	1	Decal-Control Panel	15:2	93-6680	1	Decal-Diesel
1:3	131-0710	1	Decal-Safety	16	130-1134-03	1	Plate-Hold Down, LH
1:4	93-9084	4	Decal-Point, Lift	17	130-5316	1	Plate-Lock, Fuel Cap, LH
1:5	66-6140	2	Decal	17:2	93-6680	1	Decal-Diesel
1:6	115-4865	1	Decal-Radiator Fill	18	322-4	4	Screw-HH
2	130-1026	1	LH Fuel Tank ASM	19	3296-29	4	Nut-Lock, NI
3	130-1027	1	RH Fuel Tank ASM	20	100-1663	2	Pin-Hitch
4	323-6	6	Screw-HH	21	130-7714	1	Hose-Fuel
5	321-5	2	Screw-HH	28	117-2718	1	Decal-Arrester, Spark
6	3296-42	2	Nut-Lock, NI	31	3290-378	2	Tie-Cable
7	110-6186	2	Hose-Fuel	32	131-0713	1	Rod-Interlock
8	2412-80	2	Clamp-Hose	33	85-6750	1	Spring-Control
9	92-2379	2	Clamp-Hose	34	88-7200	1	Washer-Flat
10	130-0964-03	1	Radiator Cover ASM	35	3290-307	1	Pin-Cotter
11	130-0995-01	1	Cover-Bottom	36	131-9175	1	Seal-Foam
12	353-989	1	Plug-Hex, Hollow	37	131-9209-01	1	Plate-Cover
12:1	237-42	1	O-Ring	38	32144-14	3	Screw-HWHTF
13	2412-134	2	Clamp-R	39	AU382892A1	1	Blank-Switch, Rocker
14	130-1104-03	1	Plate-Hold Down, RH				

LH Fuel Tank Assembly No. 130-1026

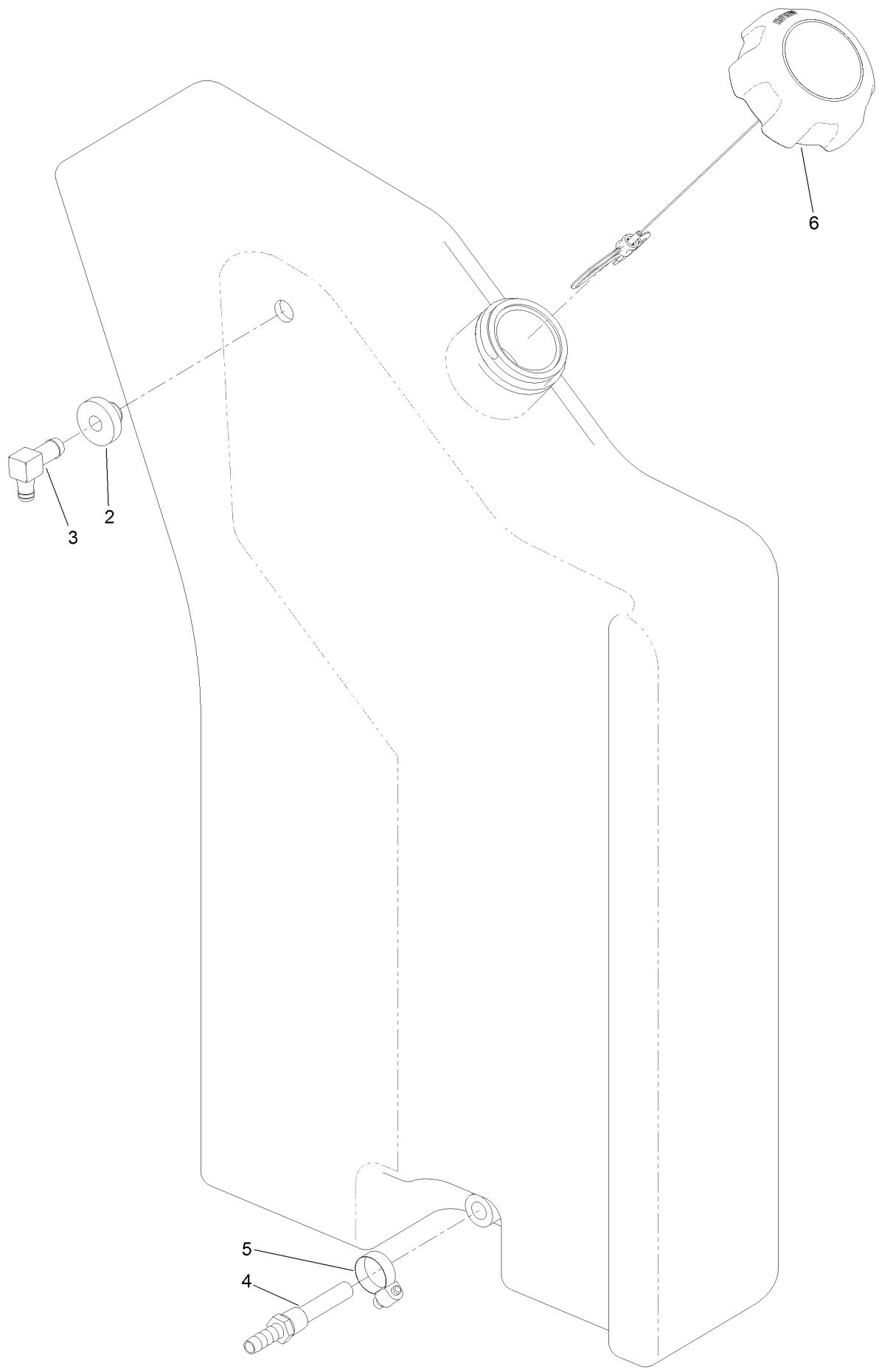


LH Fuel Tank Assembly No. 130-1026 (continued)

<i>Ref.</i>	<i>Part Number</i>	<i>Qty.</i>	<i>Description</i>
2	95-8972	1	Grommet
3	104-5603	1	Gauge-Level, Fuel
4	46-6560	2	Bushing
5	1-643259	1	Fitting-Elbow

<i>Ref.</i>	<i>Part Number</i>	<i>Qty.</i>	<i>Description</i>
6	112-6374	1	Fitting-Strainer
7	2412-36	1	Clamp-Hose
8	104-5228	1	Fitting-Elbow, 90 DEG
9	130-7567	1	Cap-Diesel

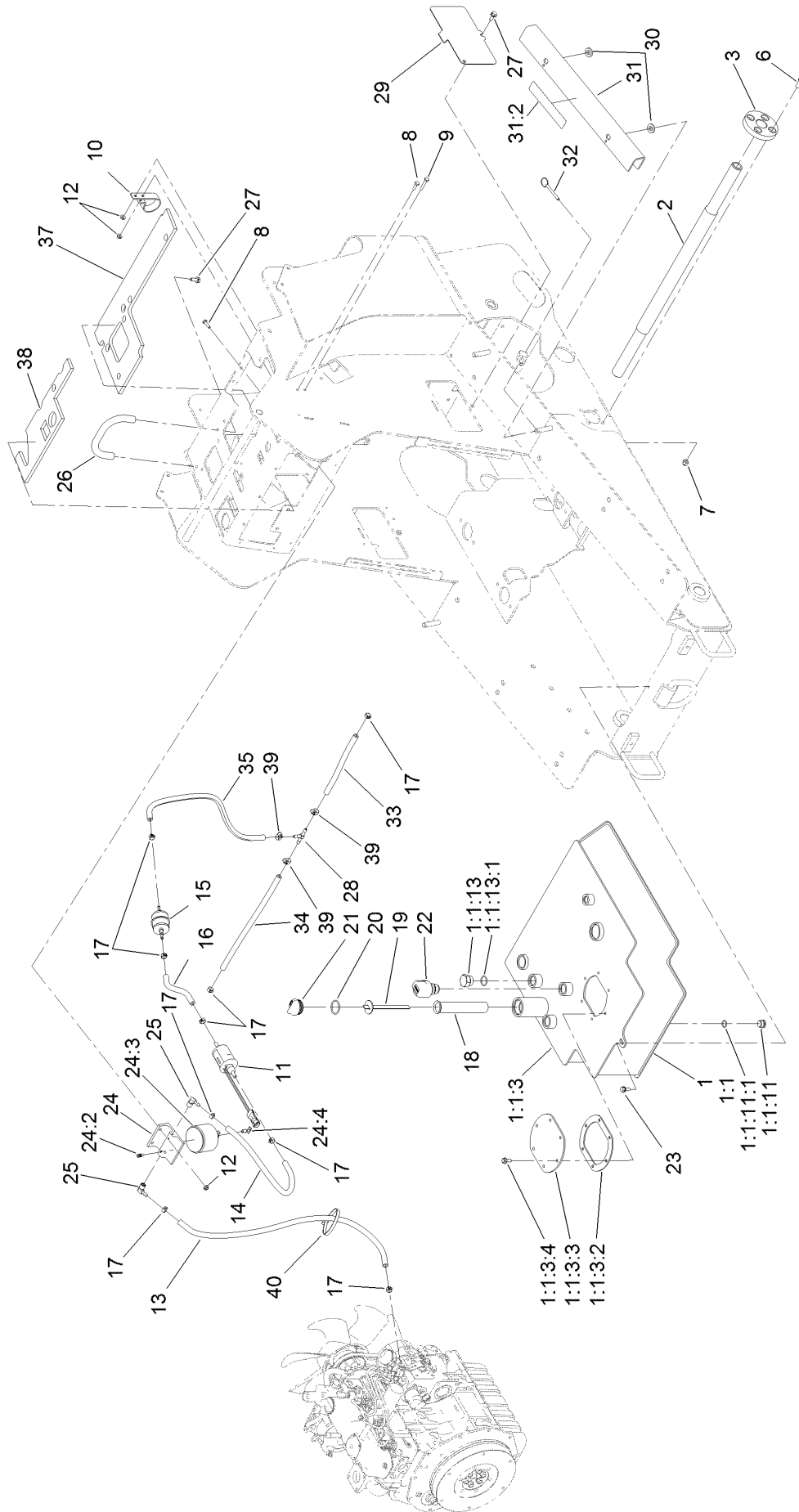
RH Fuel Tank Assembly No. 130-1027



RH Fuel Tank Assembly No. 130-1027 (continued)

<i>Ref.</i>	<i>Part Number</i>	<i>Qty.</i>	<i>Description</i>	<i>Ref.</i>	<i>Part Number</i>	<i>Qty.</i>	<i>Description</i>
2	46-6560	1	Bushing	5	2412-36	1	Clamp-Hose
3	1-643259	1	Fitting-Elbow	6	130-7567	1	Cap-Diesel
4	112-6374	1	Fitting-Strainer				

Hydraulic Tank and Track Shaft Assembly

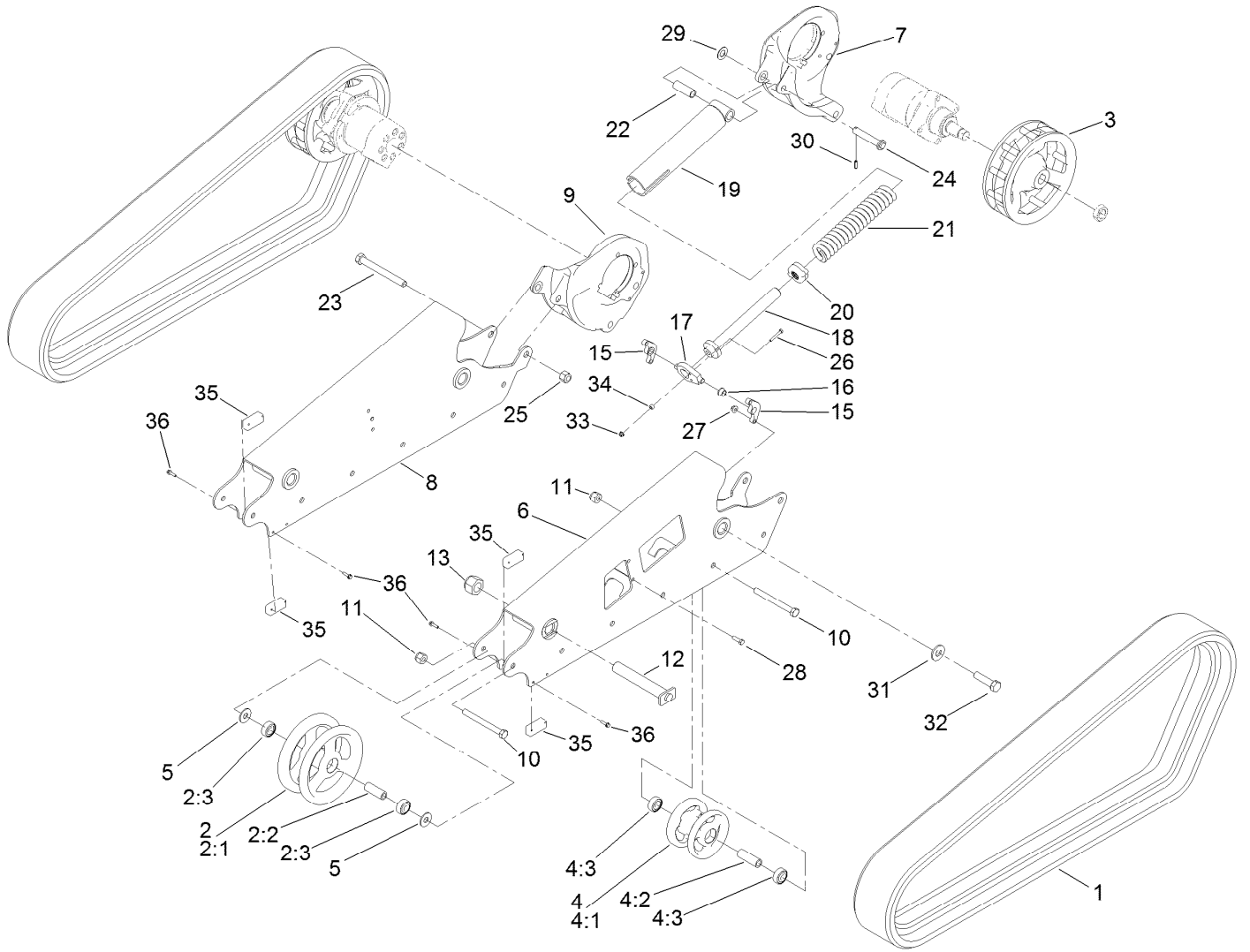


Hydraulic Tank and Track Shaft Assembly (continued)

<i>Ref.</i>	<i>Part Number</i>	<i>Qty.</i>	<i>Description</i>	<i>Ref.</i>	<i>Part Number</i>	<i>Qty.</i>	<i>Description</i>
1	125-0404-03	1	HYD Tank ASM	19	130-7686	1	Dipstick
1:1		1	Tank-HYD ●	20	237-123	1	O-Ring
1:1:3		1	Tank Top ASM ●	21	93-7498	1	Plug-Plastic
1:1:3:2	107-3557	1	Gasket-Cover, Access	22	115-9793	1	Breather
1:1:3:3	108-6297	1	Cover-Tank	23	32144-11	1	Screw-HWHTF
1:1:3:4	98-9940	6	Screw	24	109-2678	1	Filter Head ASM
1:1:11	353-988	1	Plug-Hex	24:2	63-8290	1	Vent-Air
1:1:11:1	237-79	1	O-Ring	24:3	109-3117	1	Filter-Separator, Water
1:1:13	354-74	1	Plug-HH	24:4	63-8310	1	Valve-Drain
1:1:13:1	237-81	1	O-Ring	25	353-781	2	Fitting-Elbow
2	125-0425	1	Shaft-Track	26	112-2620	1	Bar-Reference
3	125-0339	2	Hub-Shaft	27	3234-5	4	Screw-HHF
6	323-6	8	Screw-HH	28	99-5005	1	Fitting-Tee, Barbed
7	3296-39	8	Nut-Lock, NI	29	130-1036-01	2	Plate-Cover, Access
8	321-5	3	Screw-HH	30	83-1470	4	Washer-Neoprene
9	321-9	1	Screw-HH	31	130-5315	2	Arm-Locking
10	110-8817	1	Bracket-Pump, Fuel	31:2	115-4858	1	Decal-Danger
11	110-8806	1	Pump-Fuel	32	108-0094	4	Pin-Cotterless
12	32128-33	4	Nut-HF	33	110-4107	1	Hose-Fuel
13	110-6186	1	Hose-Fuel	34	110-4101	1	Hose-Fuel
14	114-4028	1	Hose-Fuel	35	108-3284	1	Hose-Fuel
15	112-7836	1	Filter-Inline	37	132-8416	1	Foam-Heat Shield
16	108-3280	1	Hose-Fuel	38	132-8417	1	Foam-Heat Shield
17	92-2379	9	Clamp-Hose	39	2412-108	3	Clamp-Worm
18	61-2790	1	Filter-Screen	40	3334-945	1	Tie-Cable

● Not serviced separately

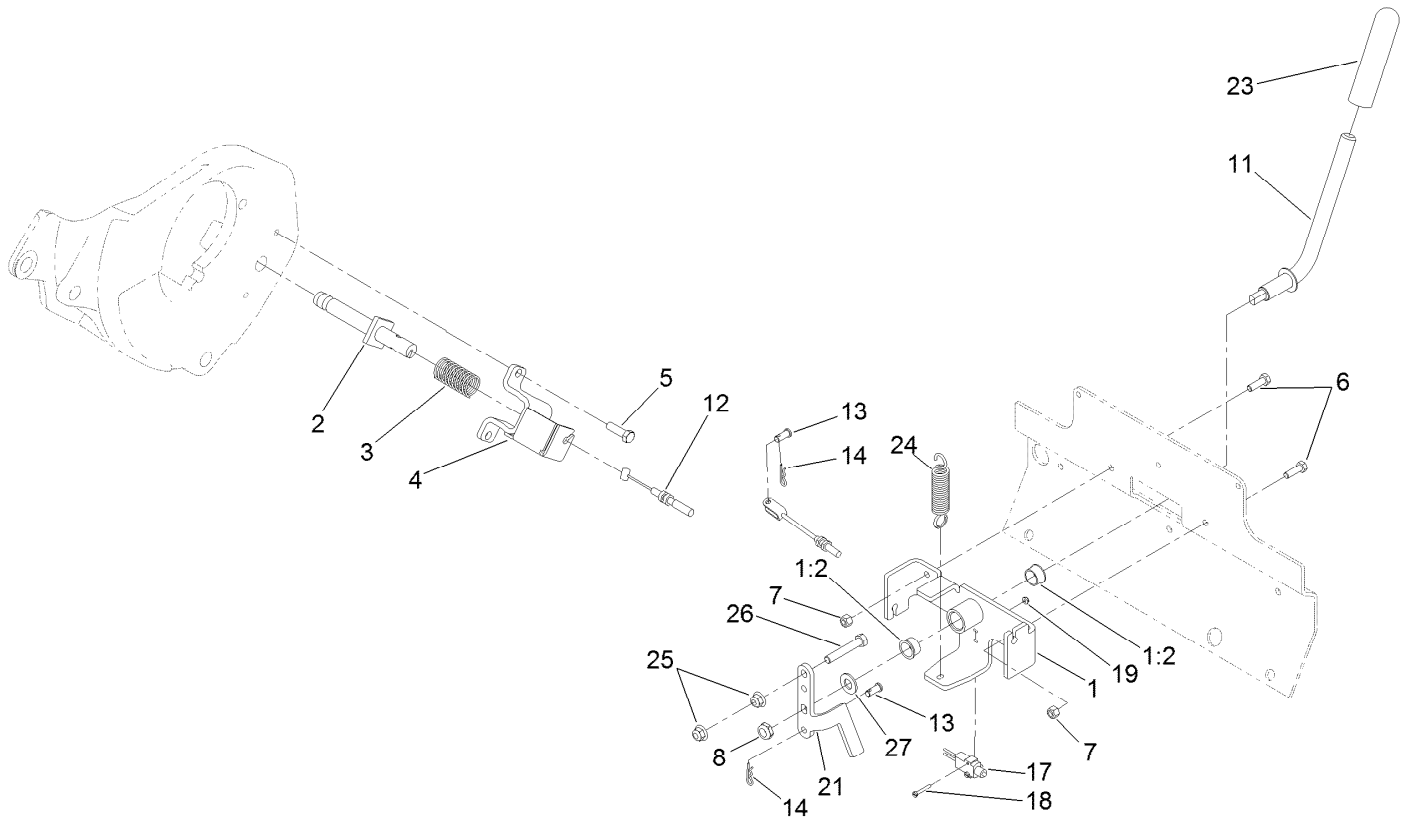
Track, Drive Wheel and Tensioner Assembly



Track, Drive Wheel and Tensioner Assembly (continued)

<i>Ref.</i>	<i>Part Number</i>	<i>Qty.</i>	<i>Description</i>	<i>Ref.</i>	<i>Part Number</i>	<i>Qty.</i>	<i>Description</i>
1	121-4592	2	Track-Narrow	17	127-9616	2	Tensioner-Pivot Joint
2	104-5745	2	Tensioner Wheel ASM	18	127-9563	2	Bolt-Tensioner
2:1	104-5747-03	1	Wheel-Tensioner	19	127-9559-03	2	Pivot-Tensioner
2:2	98-9835	1	Spacer-Wheel, Tensioner	20	108-4664	2	Block-Tensioner
2:3	120-5378	2	Bearing-Ball	21	95-3624	2	Spring-Compression
3	133-0215-03	2	Wheel-Drive	22	127-9565	2	Spacer-Pivot
4	125-0415	10	Road Wheel ASM	23	328-23	2	Screw-HH
4:1	125-0438-03	1	Wheel-Road	24	130-1057	2	Pin-Tensioner
4:2	130-7564	1	Spacer-Wheel	25	120-7252	2	Nut-Lock
4:3	120-5378	2	Bearing-Ball	26	321-10	2	Screw-HH
5	3256-7	4	Washer-Flat	27	104-8301	8	Nut-Flange, NI
6	125-0420-01	1	Mount-Narrow Wheel, LH	28	323-7	8	Screw-HH
7	127-9593-03	1	Mount-Wheel, LH	29	3256-39	2	Washer-Flat
8	125-0440-01	1	Mount-Narrow Wheel, RH	30	32121-24	2	Pin-Spring
9	127-9594-03	1	Mount-Wheel, RH	31	99-2659	2	Washer
10	327-17	12	Screw-HH	32	328-25	2	Screw-HH
11	3296-24	12	Nut-Lock, NI	33	32128-32	2	Nut-HHF
12	130-0967	2	Pin-Track	34	98-4799	2	Spacer
13	125-0399	2	Nut-HH	35	131-9241	4	Block-Track
15	127-9566-03	4	Plate-Mount, Pivot	36	120-4654	8	Screw-HHF
16	65-8770	4	Bushing-Bellcrank				

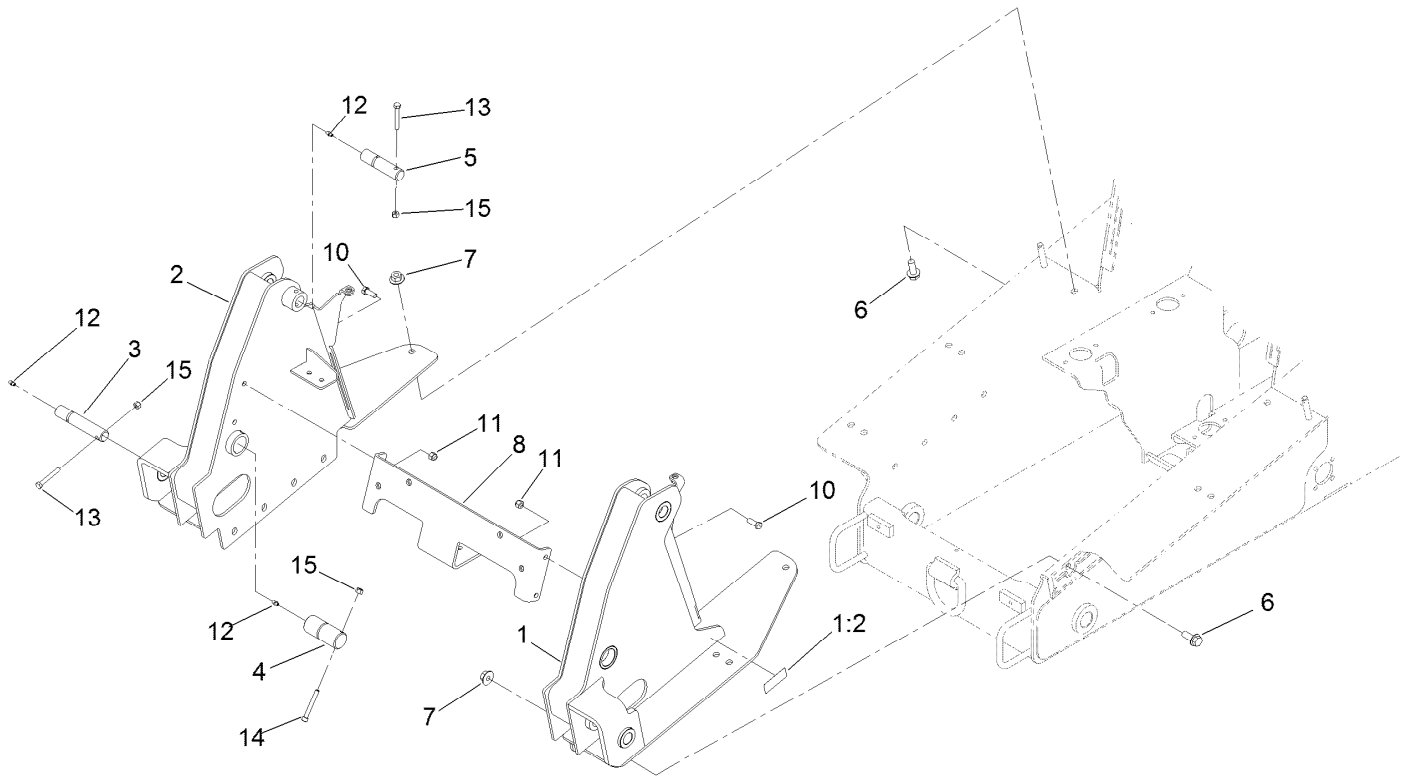
Brake Assembly



Brake Assembly (continued)

<i>Ref.</i>	<i>Part Number</i>	<i>Qty.</i>	<i>Description</i>	<i>Ref.</i>	<i>Part Number</i>	<i>Qty.</i>	<i>Description</i>
1	127-9649	1	Brake Bracket ASM	13	283-62	2	Pin-Clevis
1:2	256-252	2	Bearing-Flange	14	3290-307	2	Pin-Cotter
2	130-5278	2	Shaft	17	95-8900	1	Switch
3	125-0344	2	Spring-Compression	18	32105-9	2	Screw
4	130-5284-03	2	Bracket-Brake	19	3296-9	2	Nut-Lock
5	323-7	4	Screw-HH	21	132-8473-03	1	Plate-Linkage, Brake
6	322-5	2	Screw-HH	23	110-1037	1	Grip-Handle
7	3296-29	2	Nut-Lock, NI	24	93-5985	1	Spring-Extension
8	3296-45	1	Nut-Lock, NI	25	104-8301	2	Nut-Flange, NI
11	132-8475	1	Lever-Brake	26	104-3396	1	Screw-HH
12	130-7737	2	Cable-Brake	27	3256-26	1	Washer-Flat

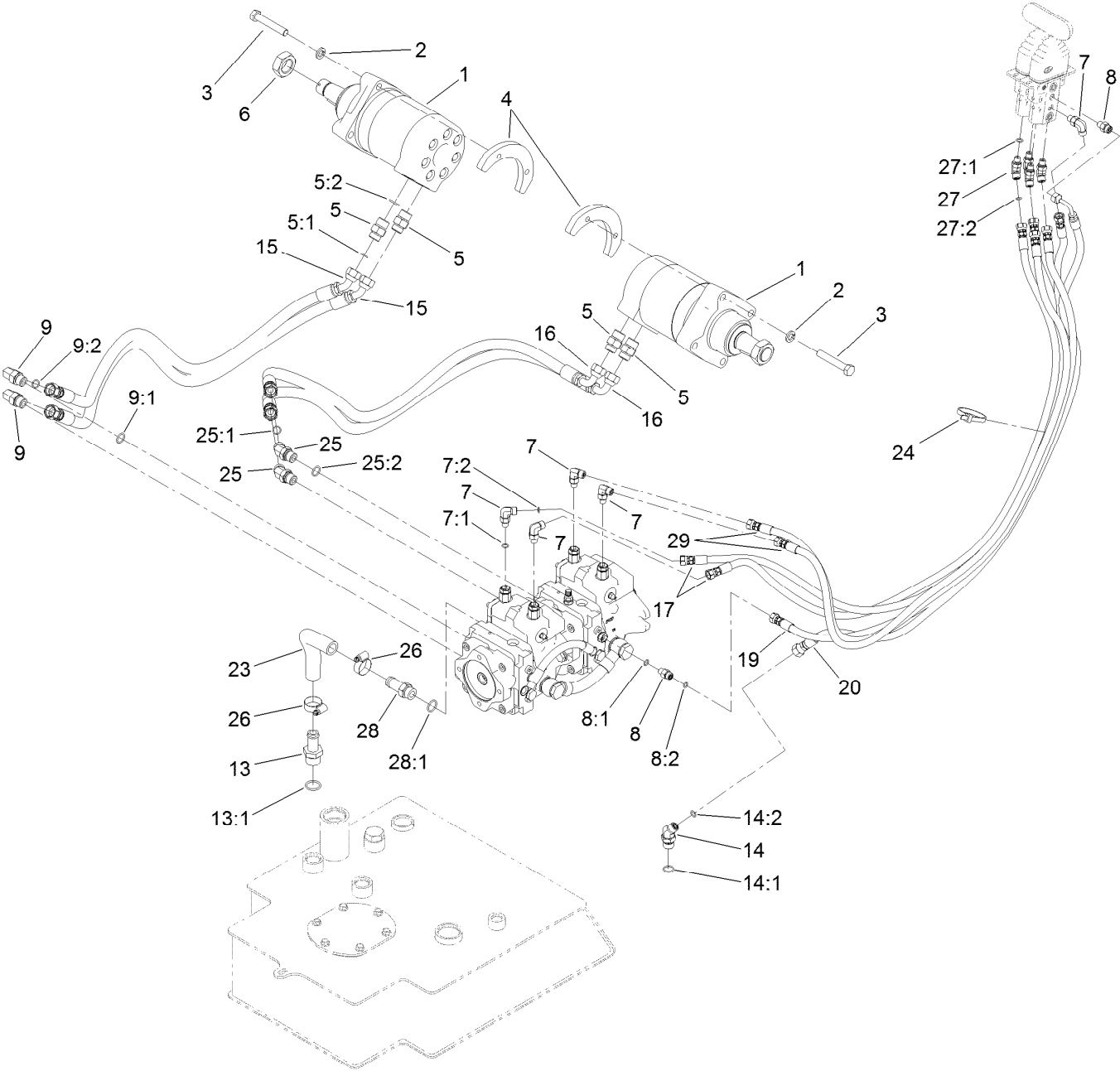
Front Tower Assembly



Front Tower Assembly (continued)

<i>Ref.</i>	<i>Part Number</i>	<i>Qty.</i>	<i>Description</i>	<i>Ref.</i>	<i>Part Number</i>	<i>Qty.</i>	<i>Description</i>
1	130-5323	1	Tower-Front, LH	8	125-3667-03	1	Plate-Cross, Tower
1:2	115-2047	1	Decal-Surface, Hot	10	AU426-616	4	Screw-HH
2	130-5177-01	1	Tower, RH	11	3296-39	4	Nut-Lock, NI
3	131-9201	2	Pin-HYD	12	302-5	6	Fitting-Grease
4	125-3748	2	Pin-Arm	13	322-11	4	Screw-HH
5	125-3695	2	Pin-Link	14	3274-40	2	Screw-HSH
6	3234-38	18	Screw-HHF	15	3296-29	6	Nut-Lock, NI
7	32128-52	18	Nut-Lock, Flange				

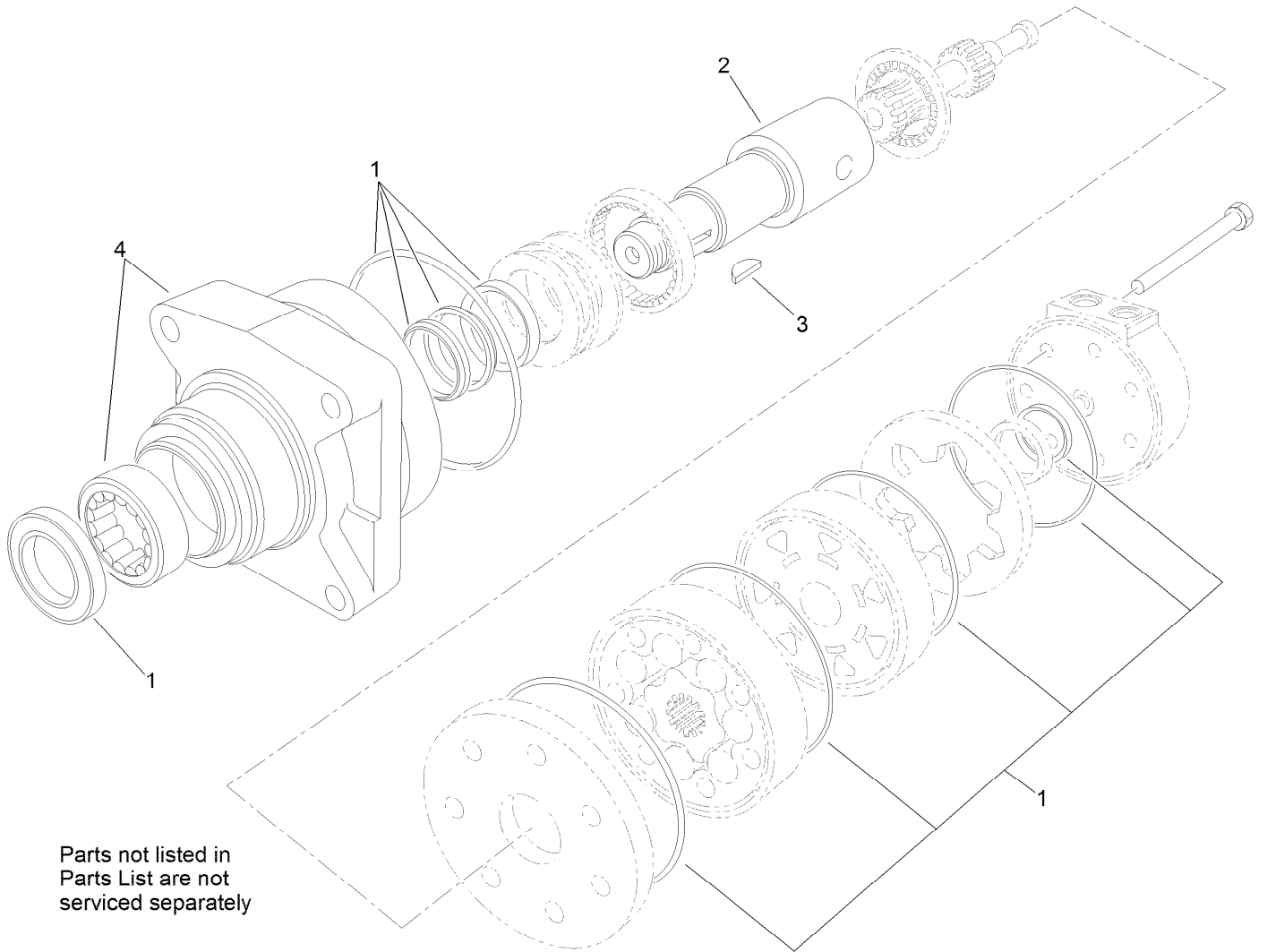
Hydraulic Motor and Hose Assembly



Hydraulic Motor and Hose Assembly (continued)

<i>Ref.</i>	<i>Part Number</i>	<i>Qty.</i>	<i>Description</i>	<i>Ref.</i>	<i>Part Number</i>	<i>Qty.</i>	<i>Description</i>
1	130-7729	2	Motor-HYD	14:1	237-79	1	O-Ring
2	3253-7	8	Washer-Lock	14:2	237-22	1	O-Ring
3	115-4845	8	Screw-HH, TAP	15	130-7733	2	Hose-HYD
4	127-9567-03	4	Plate-Mounting	16	130-7734	2	Hose-HYD
5	340-6	4	Fitting-HYD, Straight	17	127-9622	2	Hose-HYD
5:1	237-30	1	O-Ring	19	127-9624	1	Hose-HYD
5:2	237-80	1	O-Ring	20	127-9625	1	Hose-Return
6	107-9319	2	Nut-Hex	23	127-9628	1	Hose-Return
7	340-132	5	Fitting-HYD, 90 DEG	24	3334-945	1	Tie-Cable
7:1	237-78	1	O-Ring	25	340-101	2	Fitting-HYD, 45 DEG
7:2	237-21	1	O-Ring	25:1	237-30	1	O-Ring
8	340-92	2	Fitting-HYD, Straight	25:2	237-79	1	O-Ring
8:1	237-78	1	O-Ring	26	2412-129	2	Clamp-Hose
8:2	237-21	1	O-Ring	27	340-103	4	Fitting-HYD, 45 DEG
9	340-98	2	Fitting-HYD, 90 DEG	27:1	237-78	1	O-Ring
9:1	237-79	1	O-Ring	27:2	237-21	1	O-Ring
9:2	237-30	1	O-Ring	28	354-136	1	Fitting-HYD
13	354-73	1	Fitting-Straight	28:1	237-80	1	O-Ring
13:1	237-81	1	O-Ring	29	127-9623	2	Hose-HYD
14	340-138	1	Fitting-HYD, 45 DEG				

Hydraulic Motor Assembly No. 130-7729



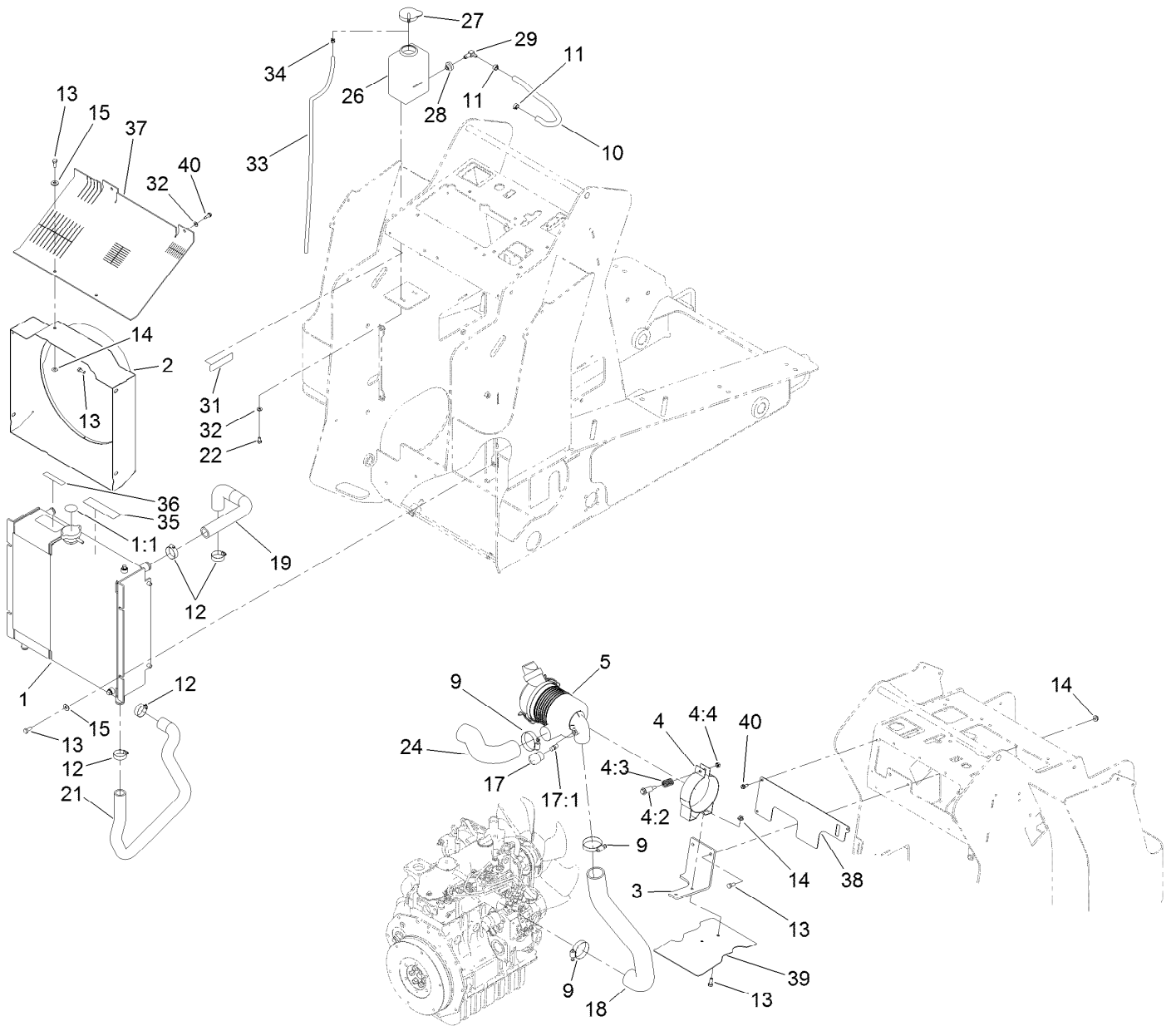
Parts not listed in
Parts List are not
serviced separately

Hydraulic Motor Assembly No. 130-7729 (continued)

<i>Ref.</i>	<i>Part Number</i>	<i>Qty.</i>	<i>Description</i>
1	100-6131	1	Seal Kit
2	106-7645	1	Coupling-Shaft

<i>Ref.</i>	<i>Part Number</i>	<i>Qty.</i>	<i>Description</i>
3	3257-42	1	Key-Woodruff
4	108-5634	1	Motor Housing ASM

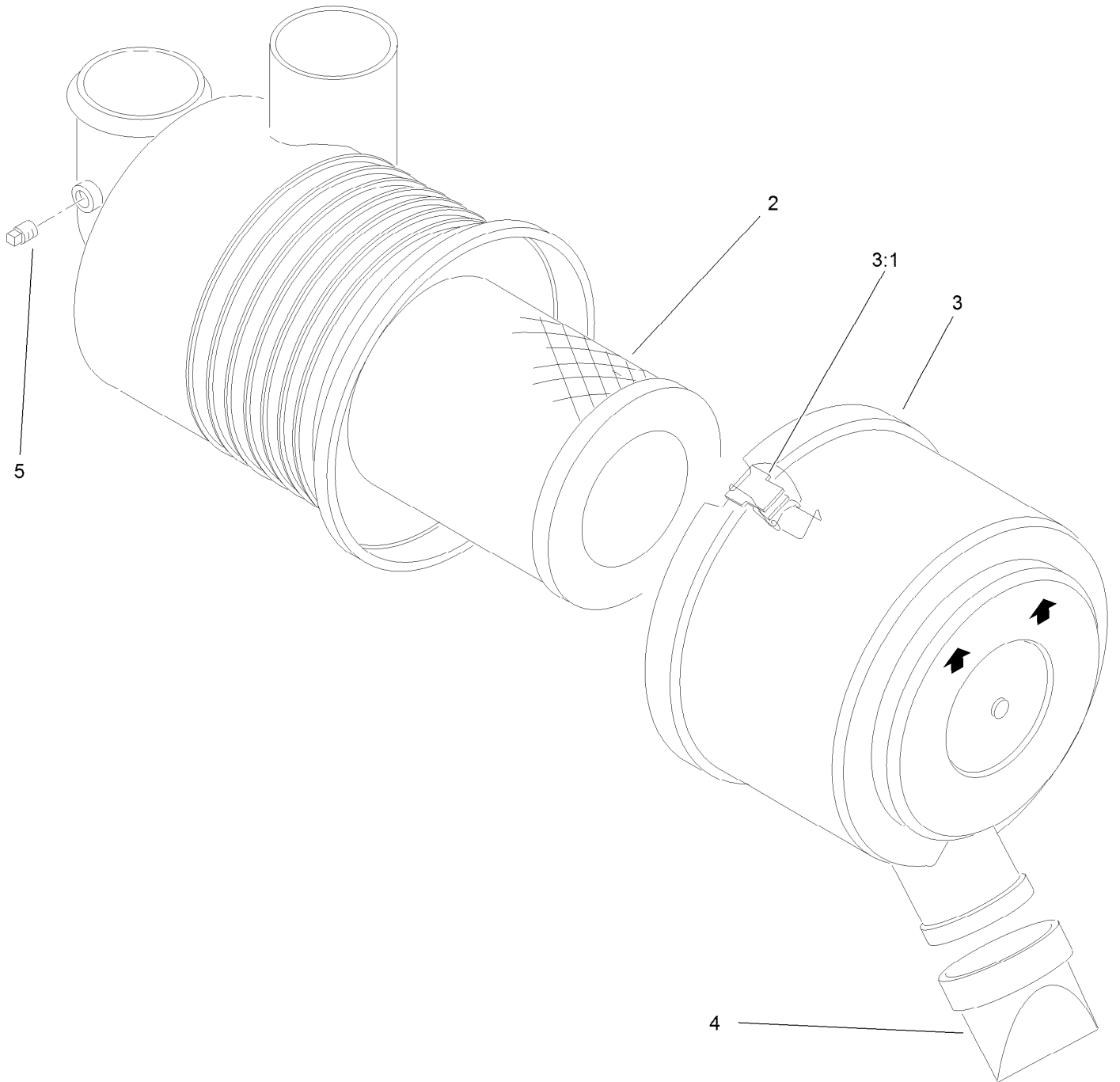
Radiator and Air Cleaner Assembly



Radiator and Air Cleaner Assembly (continued)

<i>Ref.</i>	<i>Part Number</i>	<i>Qty.</i>	<i>Description</i>	<i>Ref.</i>	<i>Part Number</i>	<i>Qty.</i>	<i>Description</i>
1	130-1030	1	Combo Cooler ASM	18	131-9173	1	Hose-Intake, Engine
1:1	106-6755	1	Decal-Cap, Radiator	19	130-1145	1	Hose-Radiator
2	130-1144-03	1	Shroud	21	131-9153	1	Hose-Radiator, Lower
3	125-0377-03	1	Bracket	22	321-2	2	Screw-HH
4	93-2191	1	Air Cleaner Mounting Band ASM	24	130-0952	1	Hose-Air, Inlet
4:2	94-3653	1	Bolt	26	1-643163	1	Tank-Overflow
4:3	94-3654	1	Spring	27	1-643164	1	Cap-Tank, Overflow
4:4	48-9510	1	Nut	28	46-6560	1	Bushing
5	93-2190	1	Air Cleaner ASM	29	46-6550	1	Fitting-Elbow, 90 DEG
9	2412-92	3	Clamp-Hose	31	115-4865	1	Decal-Radiator Fill
10	110-4110	1	Hose-LP	32	3256-22	4	Washer-Flat
11	92-2379	2	Clamp-Hose	33	108-6344	1	Hose-LP
12	2412-34	4	Clamp-Hose	34	2412-80	1	Clamp-Hose
13	322-3	14	Screw-HH	35	93-7814	1	Decal-Danger
14	32128-20	6	Nut-HF	36	93-6681	1	Decal-Warning, Fan
15	3256-3	6	Washer-Flat	37	131-9214	1	Guard-Air
17	104-3563	1	Indicator	38	131-9215	1	Cover-Air
17:1	94-1416	1	Adapter-Indicator	39	131-9216	1	Baffle-Air
				40	32104-95	5	Screw-HWH

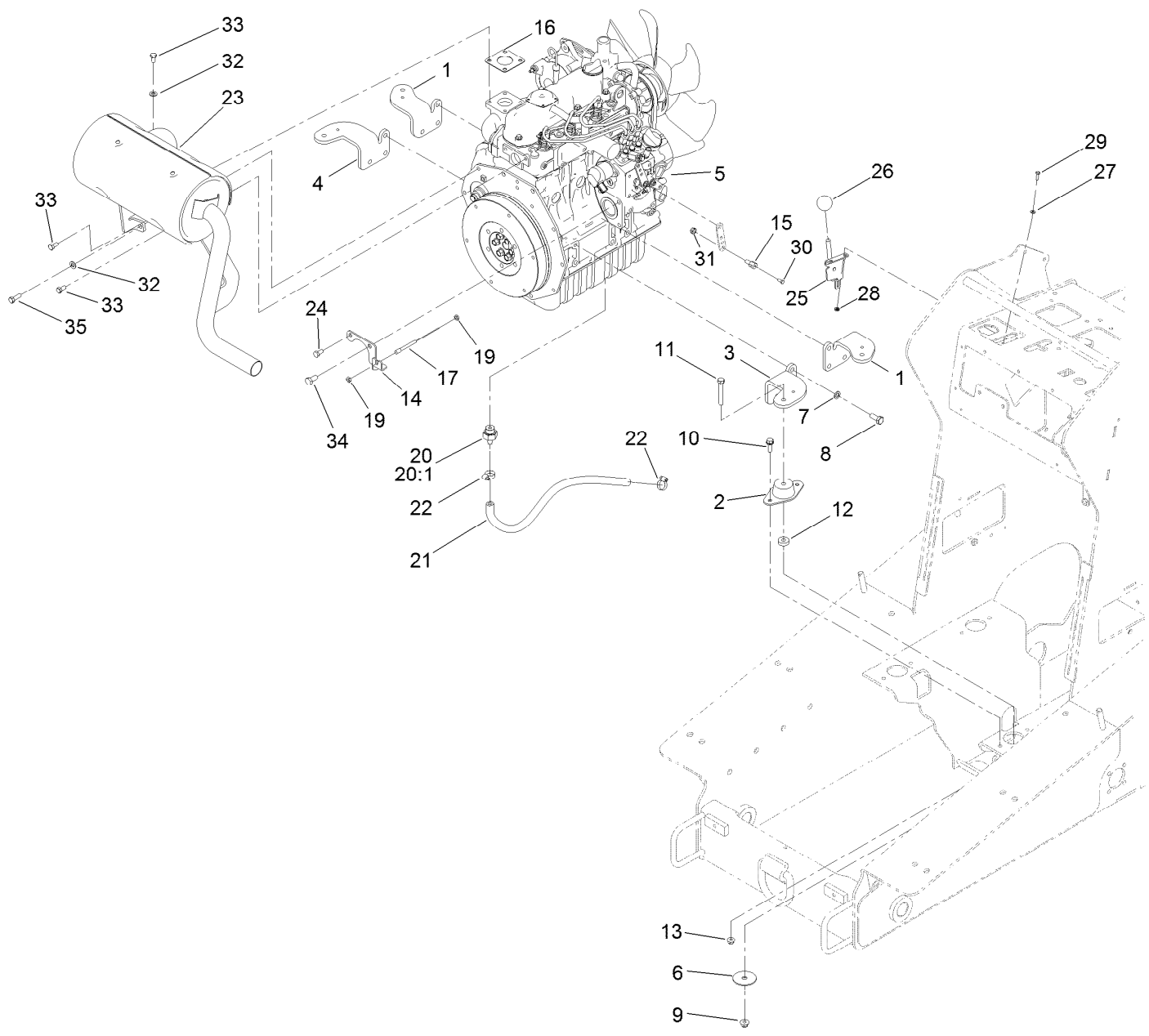
Air Cleaner Assembly No. 93-2190



Air Cleaner Assembly No. 93-2190 (continued)

<i>Ref.</i>	<i>Part Number</i>	<i>Qty.</i>	<i>Description</i>	<i>Ref.</i>	<i>Part Number</i>	<i>Qty.</i>	<i>Description</i>
2	108-3811	1	Filter-Air	4	87-9400	1	Valve-Vacuator
3	94-3652	1	Cover ASM	5	285-17	1	Plug-Pipe
3:1	1-643283	2	Latch-Cleaner, Air				

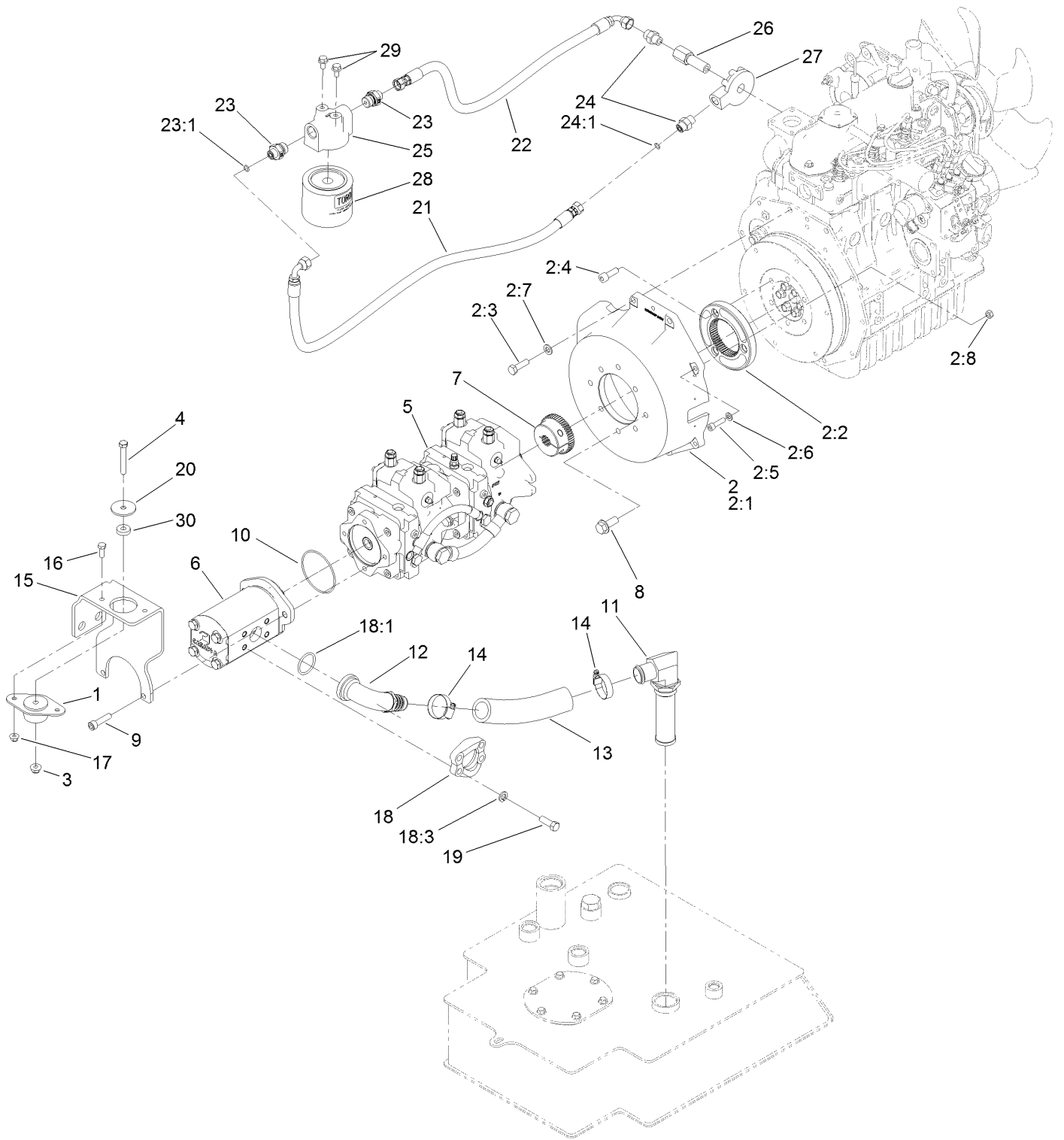
Engine Mount and Muffler Assembly



Engine Mount and Muffler Assembly (continued)

<i>Ref.</i>	<i>Part Number</i>	<i>Qty.</i>	<i>Description</i>	<i>Ref.</i>	<i>Part Number</i>	<i>Qty.</i>	<i>Description</i>
1	115-8066-03	2	Mount-Engine	20	114-8587	1	Fitting-Hose
2	121-9076	4	Mount-Engine	20:1	98-9399	1	Gasket
3	115-8068-03	1	Mount-Engine LH	21	92-7424	1	Hose-Overflow, Radiator
4	115-8063-03	1	Mount-Engine, RH	22	2412-36	2	Clamp-Hose
5	130-7727	1	Engine ASM	23	130-7732	1	Muffler-Diesel
6	87-5100	4	Washer-Snubbing	24	33114-016	1	Screw-HH
7	48-9590	12	Washer-Lock	25	108-9730	1	Lever-Control
8	43-0090	12	Screw-HH	26	233-42	1	Knob
9	104-8301	4	Nut-Flange, NI	27	3256-51	2	Washer-Flat
10	3234-29	8	Screw-HHF	28	32149-7	2	Nut-Keps
11	323-12	4	Screw-HH	29	3290-134	2	Screw
12	62-6660	4	Spacer	30	25-8640	1	Screw-HH
13	104-8300	8	Nut-Flange, NI	31	3296-20	1	Nut-Lock, NI
14	130-1148-03	1	Bracket-Throttle	32	3256-23	5	Washer-Flat
15	98-9311	1	Swivel-Throttle	33	99-5132	6	Bolt
16	99-8343	1	Gasket-Muffler	34	63-7790	1	Screw-Cap
17	130-7743	1	Cable-Throttle	35	99-5131	1	Bolt
19	3220-1	2	Nut-Jam				

Tandem Pump and Gear Pump Assembly



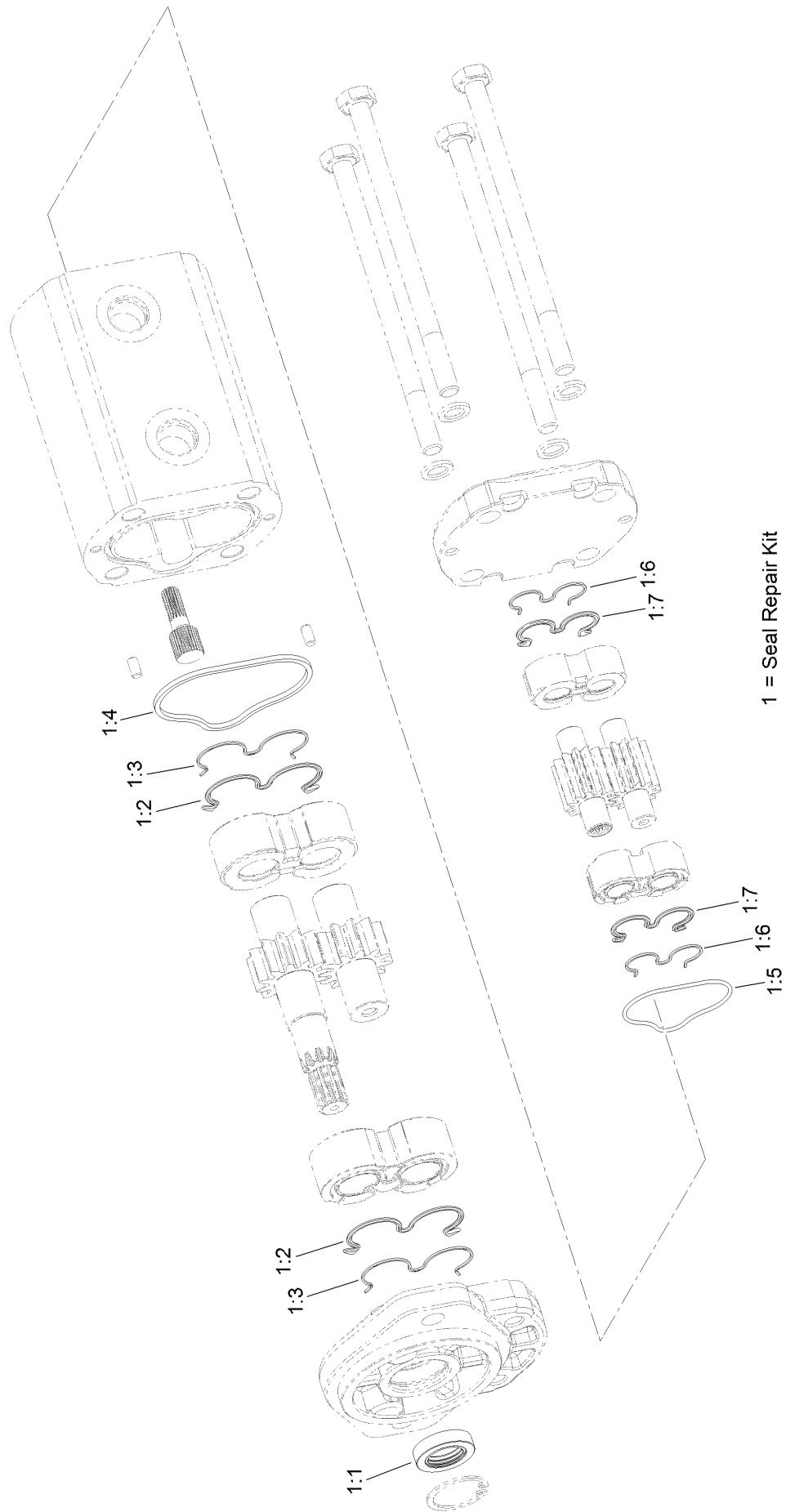
Tandem Pump and Gear Pump Assembly (continued)

<i>Ref.</i>	<i>Part Number</i>	<i>Qty.</i>	<i>Description</i>	<i>Ref.</i>	<i>Part Number</i>	<i>Qty.</i>	<i>Description</i>
1	121-9076	1	Mount-Engine	15	125-3736-01	1	Plate-Support
2	130-7728	1	Mount-Pump	16	322-4	2	Screw-HH
2:1	130-7724	1	Housing-Pump Mount	17	104-8300	2	Nut-Flange, NI
2:2	125-1179	1	Flange-Coupler	18	114-0090	1	Flange Kit
2:3	56-2140	2	Screw-HH	18:1	115-5420	1	O-Ring
2:4	108-1420	3	Screw-HSH	18:2	324-6	4	Screw-HH ■●
2:5	94-3559	4	Screw-HSH	18:3	3253-6	4	Washer-Lock
2:6	115-7370	4	Washer-Plain	19	324-5	4	Screw-HH
2:7	33095-00	2	Washer-Flat	20	63-7400	1	Washer-Rebound
2:8	33014-00	1	Nut-Hex	21	130-7717	1	Hose-HYD
3	104-8301	1	Nut-Flange, NI	22	130-7719	1	Hose-HYD
4	323-12	1	Screw-HH	23	130-7715	2	Fitting-HYD
5	121-4593	1	Pump-Tandem	23:1	237-22	1	O-Ring
6	130-7731	1	Pump-Gear	24	130-7716	2	Fitting-HYD
7	130-7725	1	Hub-Pump	24:1	237-22	1	O-Ring
8	3234-38	2	Screw-HHF	25	130-7588	1	Base-Filter
9	09718	2	Screw-Sh	26	130-7587	1	Pipe-Joint
10	237-161	1	O-Ring	27	130-7586	1	Base-Filter
11	130-7582	1	Strainer-Suction	28	104-5169	1	Filter-Oil
12	112-7374	1	Fitting	29	33104-016	2	Screw-HHF
13	130-7561	1	Hose-Suction	30	62-6660	1	Spacer
14	2412-111	2	Clamp				

● Not illustrated

■ Not used for this configuration

Gear Pump Assembly No. 130-7731

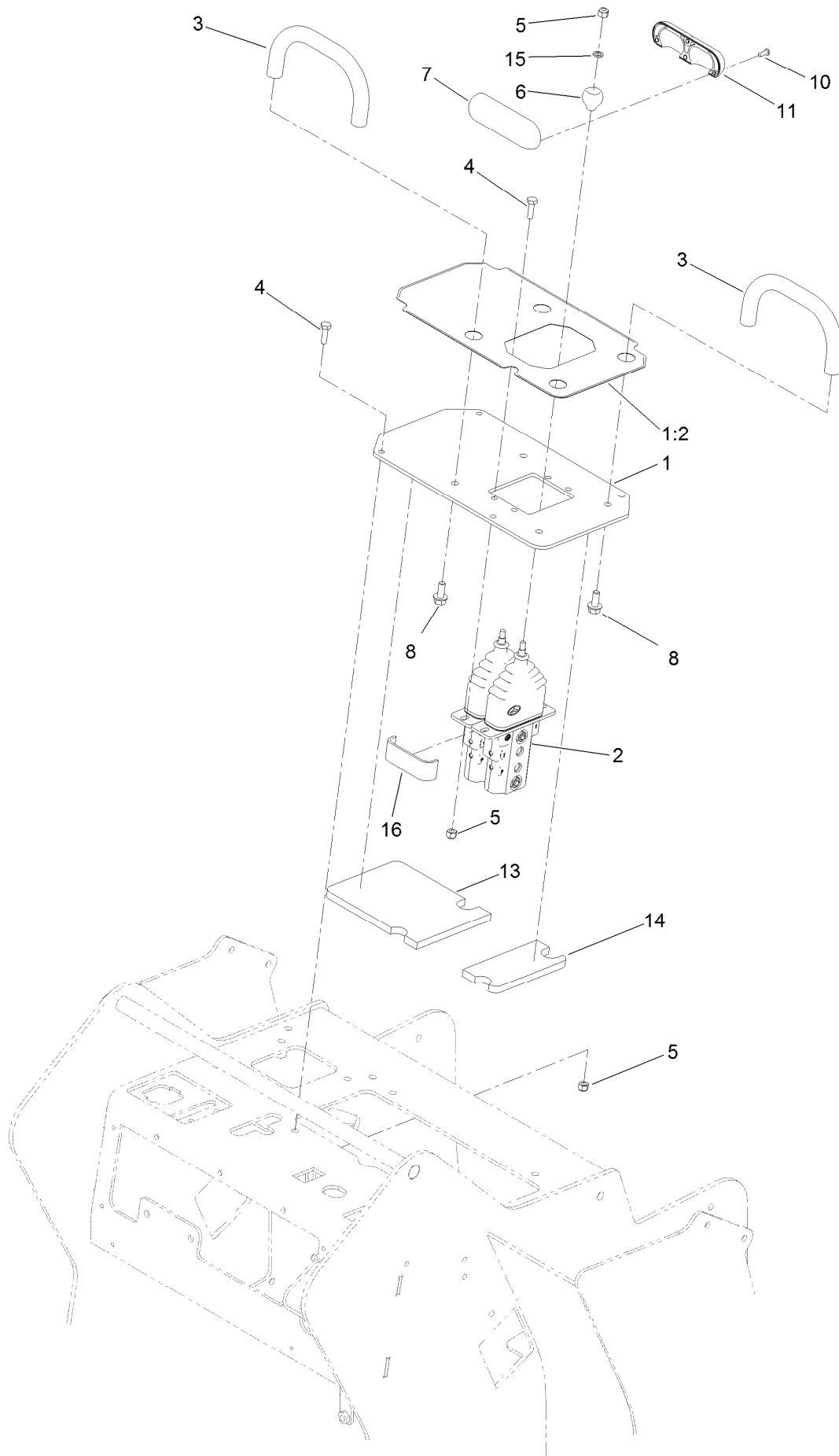


Gear Pump Assembly No. 130-7731 (continued)

<i>Ref.</i>	<i>Part Number</i>	<i>Qty.</i>	<i>Description</i>	<i>Ref.</i>	<i>Part Number</i>	<i>Qty.</i>	<i>Description</i>
1	132-6028	1	Seal Kit	1:4		1	Seal-Square ●
1:1		1	Seal-Shaft ●	1:5		1	O-Ring ●
1:2		2	Seal-Gear ●	1:6		2	Ring-Backup ●
1:3		2	Ring-Backup ●	1:7		2	Seal-Gear, Rear ●

● Not serviced separately

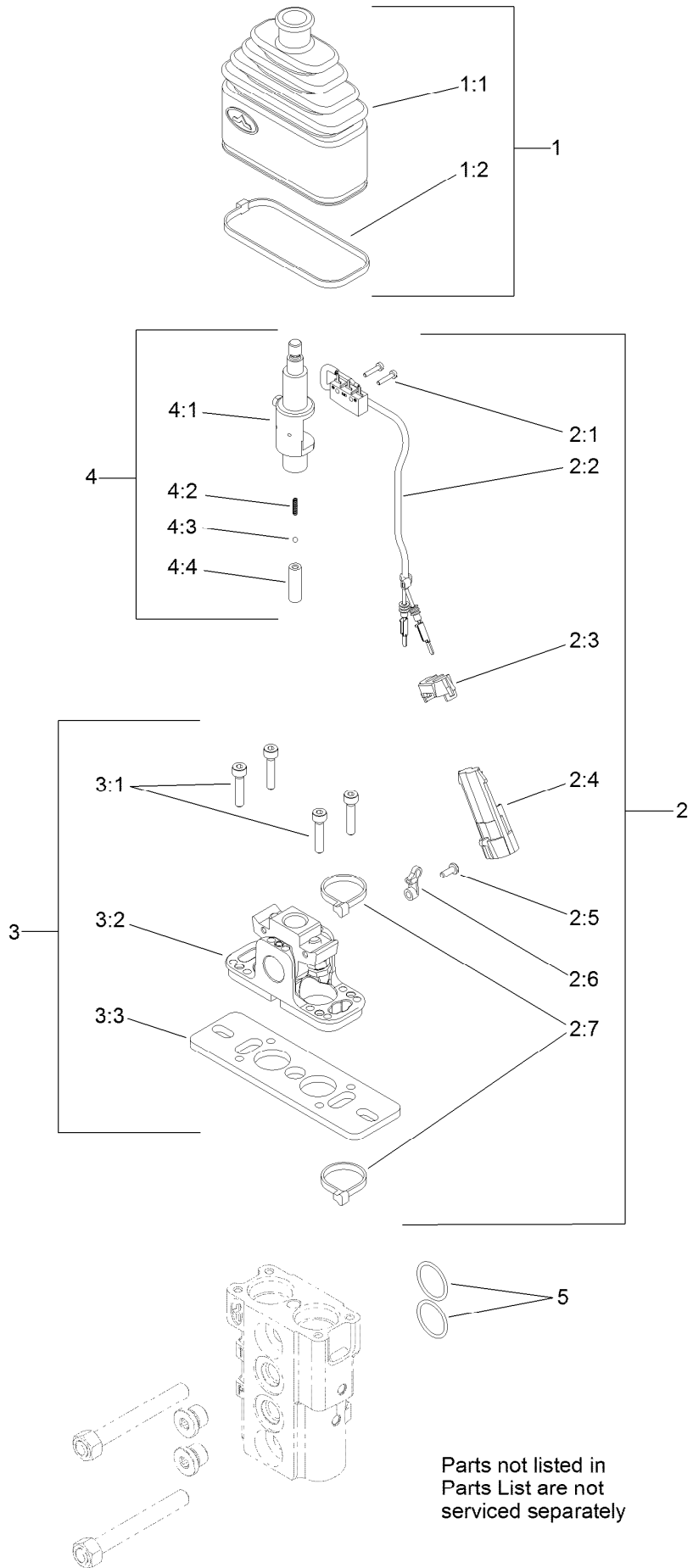
Control Valve and Reference Bar Assembly



Control Valve and Reference Bar Assembly (continued)

<i>Ref.</i>	<i>Part Number</i>	<i>Qty.</i>	<i>Description</i>	<i>Ref.</i>	<i>Part Number</i>	<i>Qty.</i>	<i>Description</i>
1	130-5321	1	Plate-Control	8	3234-5	4	Screw-HHF
1:2	131-0708	1	Decal-Control Panel	10	94-6961	4	Screw
2	125-3704	1	Valve-Control	11	131-9162	1	Handle-Traction
3	112-2620	2	Bar-Reference	13	132-8414	1	Foam-Shield, Heat
4	321-5	8	Screw-HH	14	132-8415	1	Foam-Shield, Heat
5	3296-42	10	Nut-Lock, NI	15	75-5470	2	Spacer-Bearing
6	130-7723	2	Ball-Traction	16	133-0222	1	Tape-Wire
7	130-7692	1	Handle-Control				

Control Valve Assembly No. 125-3704

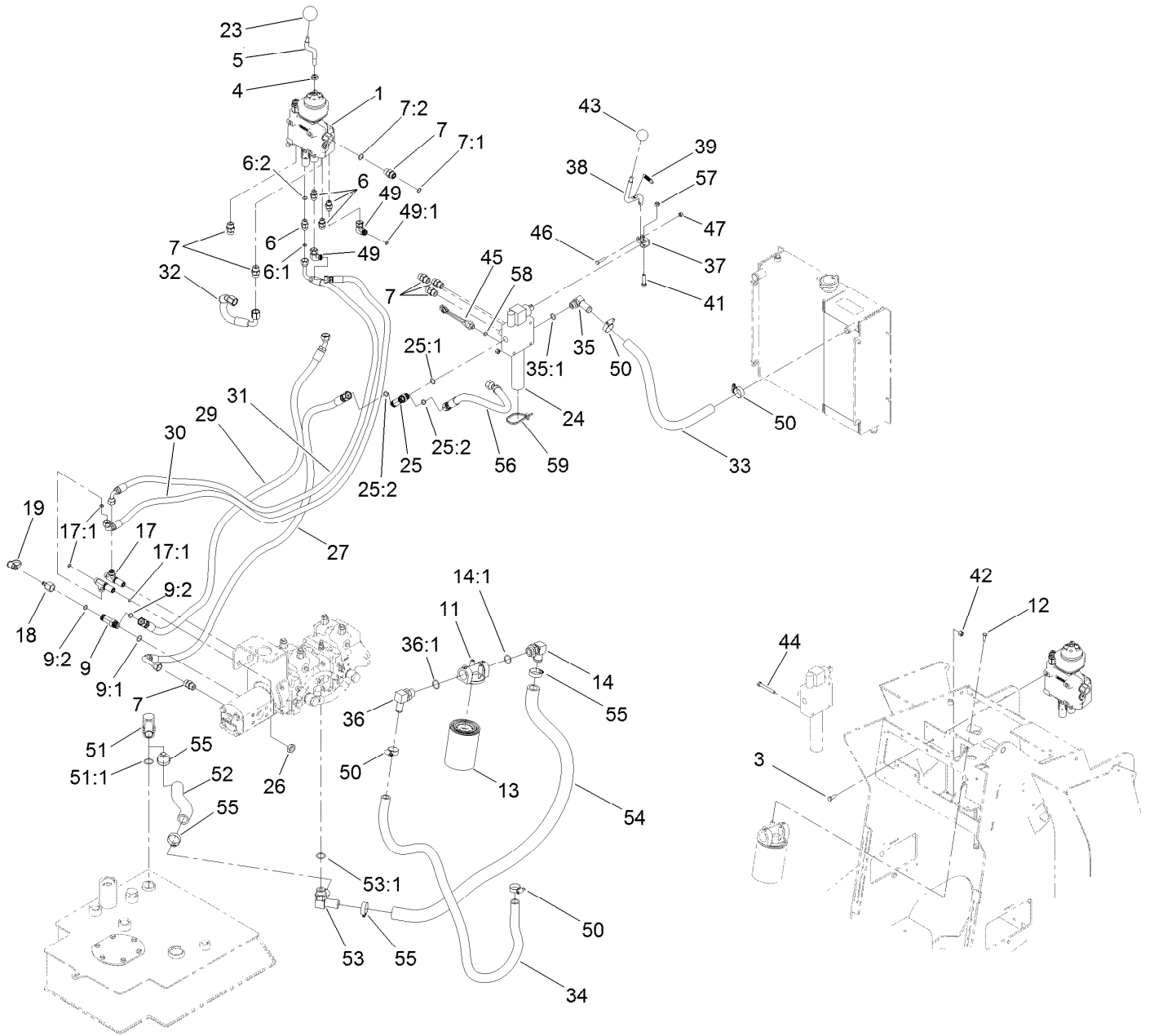


Control Valve Assembly No. 125-3704 (continued)

<i>Ref.</i>	<i>Part Number</i>	<i>Qty.</i>	<i>Description</i>	<i>Ref.</i>	<i>Part Number</i>	<i>Qty.</i>	<i>Description</i>
1	132-6034	2	Bellow Kit	3	132-6036	2	Fulcrum Kit
1:1		1	Bellow-Rubber ●	3:1		4	Screw ●
1:2		1	Tie-Cable ●	3:2		1	Support Kit ●
2	132-6035	2	Limit Switch Kit	3:3		1	Plate-Mounting ●
2:1		2	Screw ●	4	132-6037	2	Switch Holder Lever Kit
2:2		1	Cable ●	4:1		1	Lever-Holder, Switch ●
2:3		1	Fairlead ●	4:2		1	Spring-Return ●
2:4		1	Connector ●	4:3		1	Sphere ●
2:5		1	Screw ●	4:4		1	Holder-Spring ●
2:6		1	Tie-Wire ●	5	100-7246	2	O-Ring
2:7		2	Tie-Cable ●				

● Not serviced separately

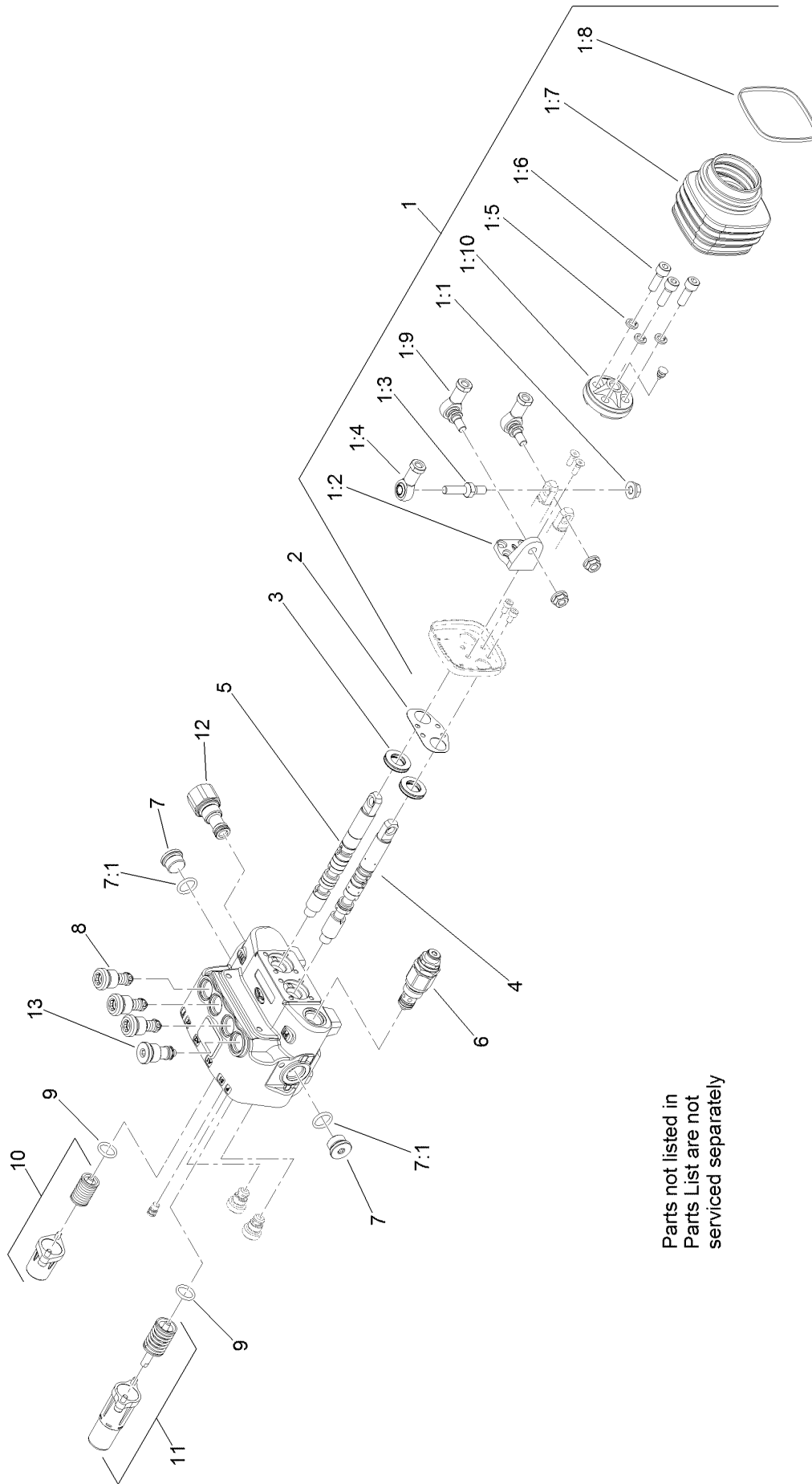
2-Spool Valve and Auxiliary Valve Assembly



2-Spool Valve and Auxiliary Valve Assembly (continued)

<i>Ref.</i>	<i>Part Number</i>	<i>Qty.</i>	<i>Description</i>	<i>Ref.</i>	<i>Part Number</i>	<i>Qty.</i>	<i>Description</i>
1	130-7710	1	2 Spool Valve ASM	32	127-9634	1	Hose-Return
3	322-4	3	Screw-HH	33	130-7565	1	Hose-Return
4	51-2070	1	Nut	34	130-7566	1	Hose-Return
5	121-4577	1	Shaft-Handle	35	353-954	1	Adapter
6	340-2	4	Fitting-HYD, Straight	35:1	237-79	1	O-Ring
6:1	237-22	1	O-Ring	36	353-987	1	Fitting-HYD, 90 DEG (Barbed)
6:2	237-42	1	O-Ring	36:1	237-81	1	O-Ring
7	340-4	7	Fitting-HYD, Straight	37	130-1087	1	Bracket-Auxiliary
7:1	237-30	1	O-Ring	38	130-1083	1	Rod-Auxiliary
7:2	237-79	1	O-Ring	39	114-0249	1	Spring-Extension
9	340-109	1	Fitting-HYD, Tee	41	33114-035	1	Screw-HH
9:1	237-79	1	O-Ring	42	3296-29	3	Nut-Lock, NI
9:2	237-30	2	O-Ring	43	233-42	1	Knob
11	92-5821	1	Head-Filter	44	322-12	3	Screw-HH
12	321-4	2	Screw-HH	45	72-4310	1	Switch-Ball
13	86-3010	2	Filter-Oil	46	321-8	1	Screw-HH
14	100-4202	1	Fitting-HYD, 90 DEG	47	3296-42	1	Nut-Lock, NI
14:1	237-81	1	O-Ring	49	340-159	2	Fitting-HYD, 90 DEG
17	340-68	2	Fitting-Tee, Bulkhead	49:1	237-22	2	O-Ring
17:1	237-22	3	O-Ring	50	2412-129	4	Clamp-Hose
18	100-5616	1	Fitting	51	56-9530	1	Fitting-HYD, 90 DEG
19	354-79	1	Cap-Dust	51:1	237-117	1	O-Ring
23	233-21	1	Knob	52	127-9627	1	Hose-Suction
24	130-7562	1	Valve-Auxiliary	53	AU375462A1	1	Connector
25	340-157	1	Fitting-HYD, Tee	53:1	237-81	1	O-Ring
25:1	237-79	1	O-Ring	54	127-9626	1	Hose-Return
25:2	237-30	2	O-Ring	55	2412-34	4	Clamp-Hose
26	340-70	2	Nut-Lock	56	120-0880	1	Hose-HYD
27	127-9629	1	Hose-HYD	57	33024-00	1	Nut-Lock, NI
29	127-9631	1	Hose-HYD	58	237-42	1	O-Ring
30	127-9632	1	Hose-HYD	59	3290-378	2	Tie-Cable
31	130-7597	1	Hose-HYD				

2-Spool Valve Assembly No. 130-7710

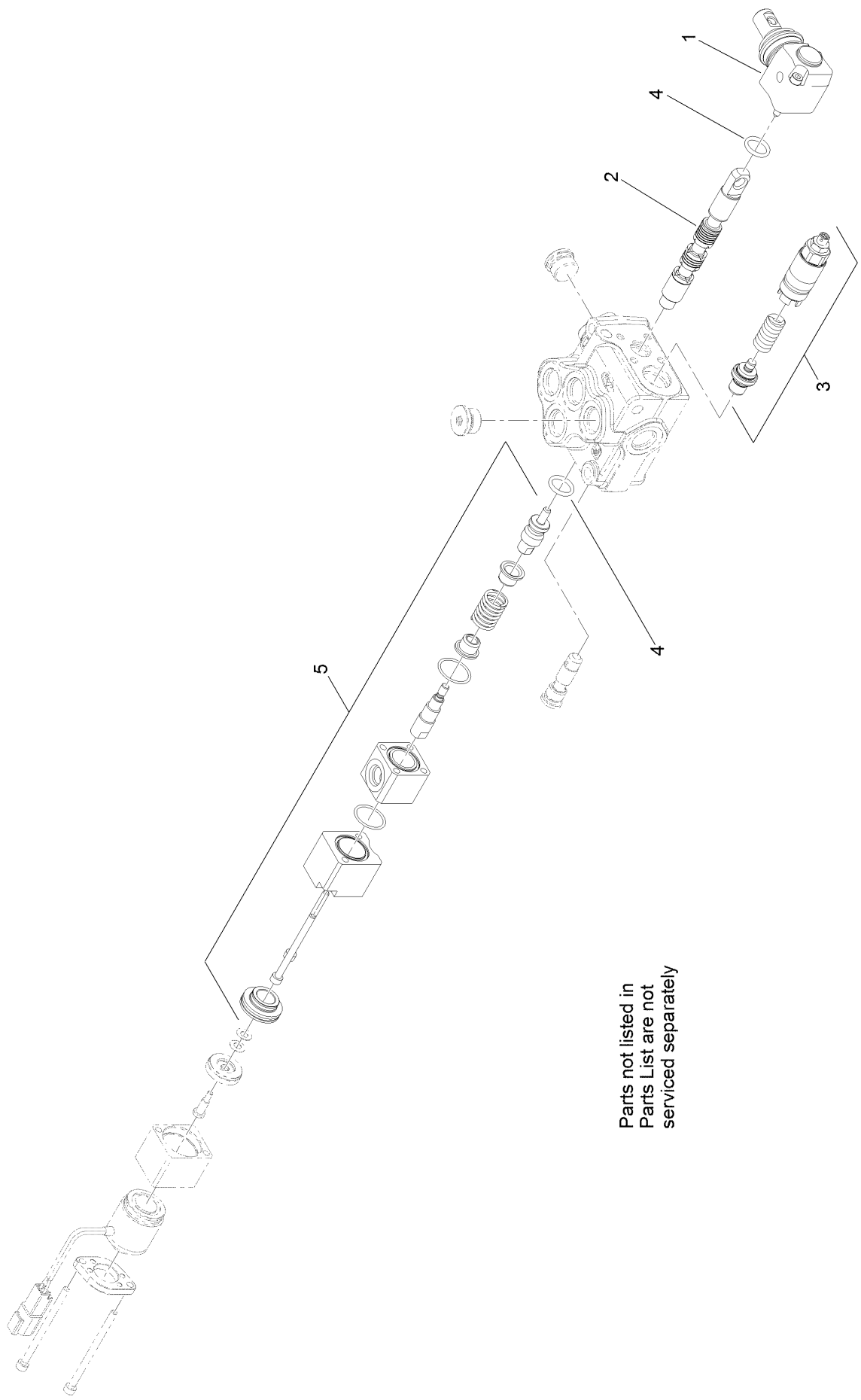


Parts not listed in
Parts List are not
serviced separately

2-Spool Valve Assembly No. 130-7710 (continued)

<i>Ref.</i>	<i>Part Number</i>	<i>Qty.</i>	<i>Description</i>	<i>Ref.</i>	<i>Part Number</i>	<i>Qty.</i>	<i>Description</i>
1	106-7724	1	Joystick Kit	3	106-7738	2	Seal-Valve, Spool
1:1	98-0668	3	Nut	4	106-7737	1	Spool-Valve
1:2	106-7726	1	Pivot-Joystick	5	106-7736	1	Spool-Valve
1:3	106-7727	1	Pin-Joystick	6	132-6031	1	Valve-Relief, Main
1:4	106-7728	1	End-Rod	7	353-988	2	Plug-Hex
1:5	42-9850	3	Washer-Lock, Spring	7:1	237-79	1	O-Ring
1:6	98-5828	3	Screw-HSH	8	106-7734	3	Valve-Relief
1:7	106-7729	1	Bellow-Rubber	9	106-7719	2	Seal-Valve
1:8	3290-379	1	Tie-Cable	10	106-7732	1	Valve Spring Kit
1:9	106-7730	2	Joint-Joystick	11	106-7733	1	Detent Spring Kit
1:10	106-7731	1	Holder-Articulated	12	132-6032	1	Joint-Sae 8
2	106-7725	1	Seal-Joystick	13	132-6033	1	Plug

Auxiliary Valve Assembly No. 130-7562



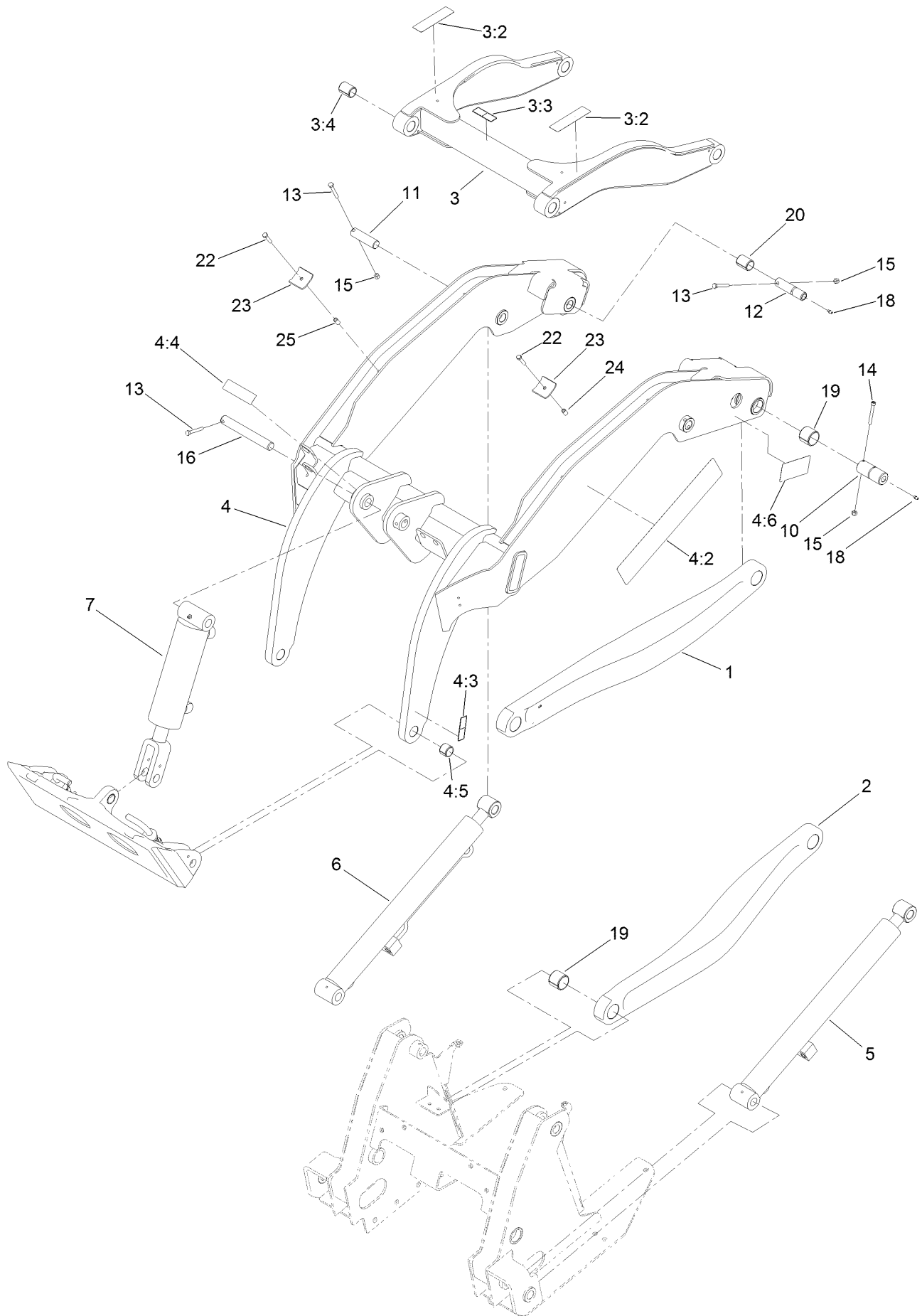
Parts not listed in
Parts List are not
serviced separately

Auxiliary Valve Assembly No. 130-7562 (continued)

<i>Ref.</i>	<i>Part Number</i>	<i>Qty.</i>	<i>Description</i>
1	132-6038	1	Lever Kit With Screws
2	114-8624	1	Valve-Spool
3	132-6039	1	Relief Valve

<i>Ref.</i>	<i>Part Number</i>	<i>Qty.</i>	<i>Description</i>
4	106-7719	2	Seal-Valve
5	132-6040	1	Spring Kit

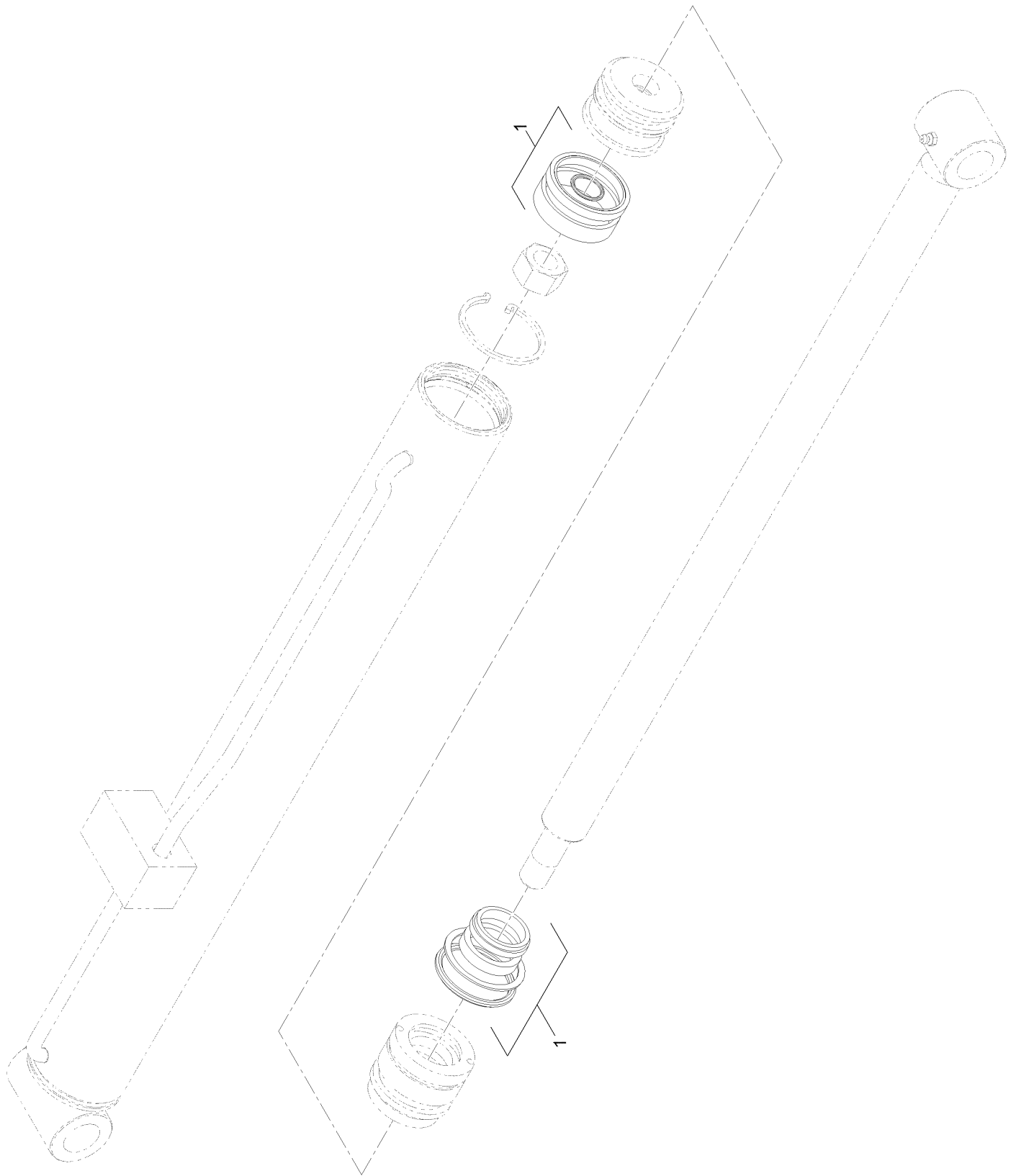
Loader Arm Assembly



Loader Arm Assembly (continued)

<i>Ref.</i>	<i>Part Number</i>	<i>Qty.</i>	<i>Description</i>	<i>Ref.</i>	<i>Part Number</i>	<i>Qty.</i>	<i>Description</i>
1	130-5151-03	1	Link-Lower, LH	10	125-3748	2	Pin-Arm
2	130-5153-03	1	Link-Lower, RH	11	130-5178	2	Pin-Pivot
3	130-5318	1	Link-Upper	12	125-3695	2	Pin-Link
3:2	130-2836	2	Decal-Warning, Crushing	13	322-11	5	Screw-HH
3:3	120-0625	1	Decal-Warning, Pinch Point	14	3274-40	2	Screw-HSH
3:4	130-5200	4	Bushing-Spring	15	3296-29	6	Nut-Lock, NI
4	130-5320	1	Arm-Loader	16	130-5210	1	Pin-Locking
4:2	130-5309	2	Decal	18	302-5	4	Fitting-Grease
4:3	120-0625	2	Decal-Warning, Pinch Point	19	130-5199	4	Bushing-Spring
4:4	115-4855	1	Decal-Caution	20	130-5200	4	Bushing-Spring
4:5	98-4871	2	Bushing-Tension	22	5-1470	4	Screw-HH
4:6	131-0711	2	Decal-Warning, Pinch Point	23	130-5221	4	Plate-Holddown, Hose
5	130-5176	1	Cylinder-Lift, LH	24	131-9150	2	Spacer-Hose
6	130-5175	1	Cylinder-Lift, RH	25	131-9151	2	Spacer-Hose
7	130-5195	1	Cylinder-HYD, Dump				

Hydraulic Cylinder Assembly No. 130-5176



Hydraulic Cylinder Assembly No. 130-5176 (continued)

<i>Ref.</i>	<i>Part Number</i>	<i>Qty.</i>	<i>Description</i>
1	132-6029	1	Seal Kit

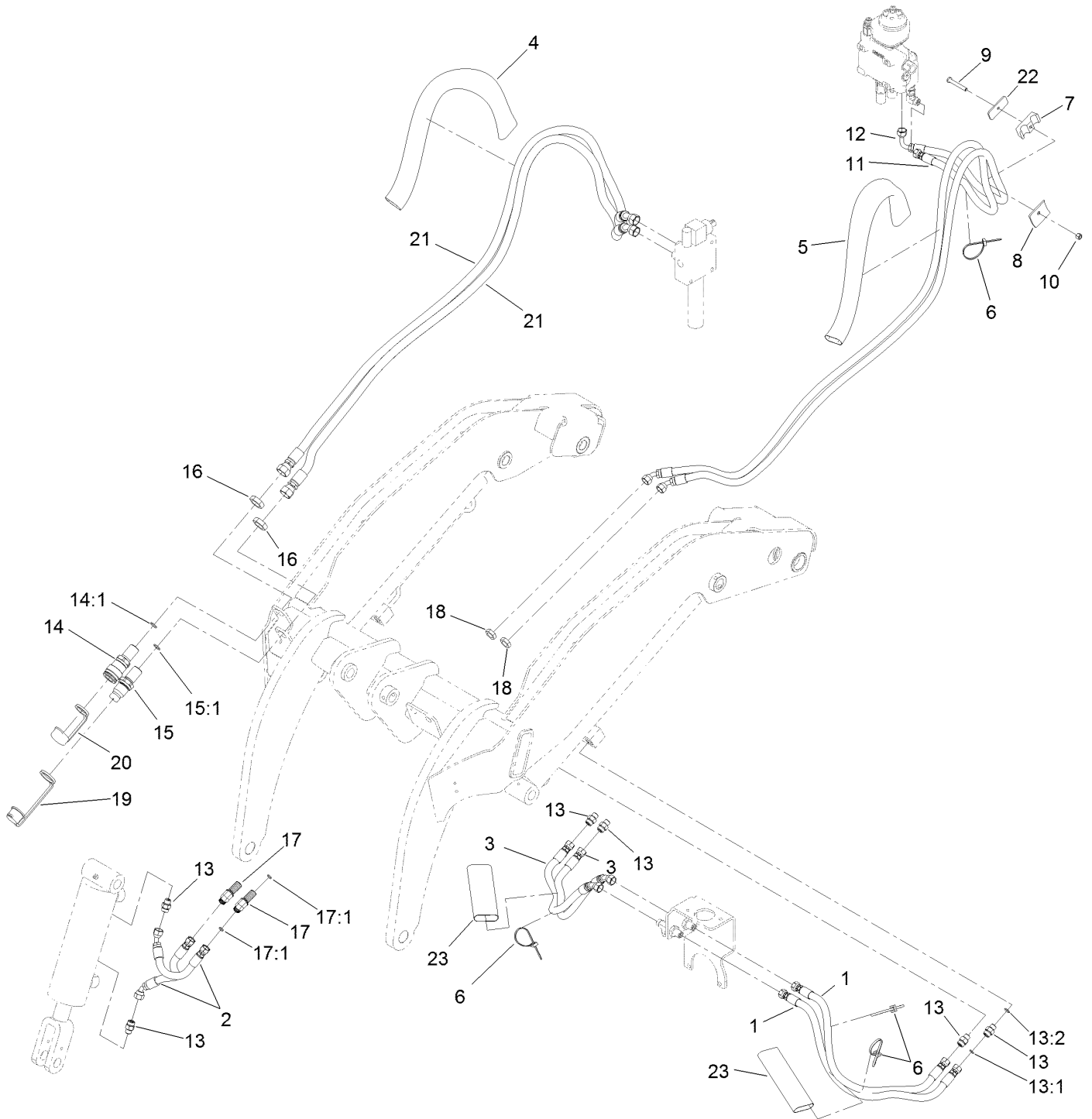
Hydraulic Cylinder Assembly No. 130-5175 (continued)

<i>Ref.</i>	<i>Part Number</i>	<i>Qty.</i>	<i>Description</i>
1	132-6029	1	Seal Kit

Hydraulic Cylinder Assembly No. 130-5195 (continued)

<i>Ref.</i>	<i>Part Number</i>	<i>Qty.</i>	<i>Description</i>
1	132-6030	1	Seal Kit

Loader Hydraulic Assembly

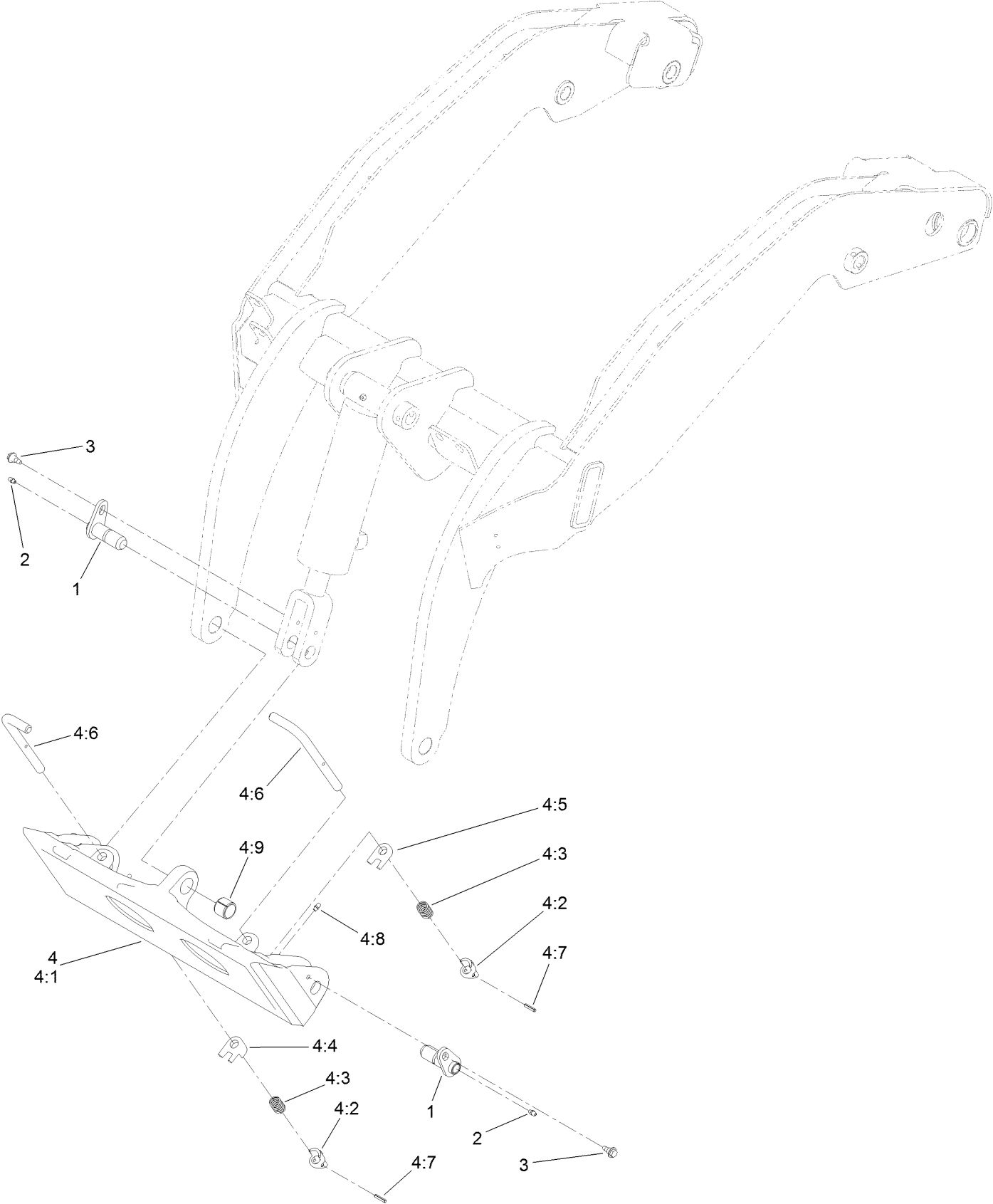


Loader Hydraulic Assembly (continued)

<i>Ref.</i>	<i>Part Number</i>	<i>Qty.</i>	<i>Description</i>	<i>Ref.</i>	<i>Part Number</i>	<i>Qty.</i>	<i>Description</i>
1	127-9639	2	Hose-HYD	14	105-8394	1	Bulkhead Coupler ASM
2	127-9637	2	Hose-HYD	14:1	237-65	1	O-Ring
3	127-9638	2	Hose-HYD	15	105-8395	1	Bulkhead Nipple ASM
4	130-7718	1	Sleeve-Protective	15:1	237-65	1	O-Ring
5	100-6128	1	Sleeve-Protective	15:2	100-6120	1	Seal Kit ●
6	3290-378	4	Tie-Cable	16	340-74	2	Nut-Lock, Bulkhead
7	94-8105	2	Clamp-Tube	17	340-69	2	Elbow-Bulkhead, 45 DEG
8	130-5221	2	Plate-Holddown, Hose	17:1	237-22	2	O-Ring
9	9114524	2	Bolt-TAP, HH	18	340-70	2	Nut-Lock
10	3296-29	2	Nut-Lock, NI	19	100-8815	1	Cap-Dust, Nipple
11	127-9633	1	Hose-HYD	20	100-8816	1	Cap-Dust, Coupler
12	130-7598	1	Hose-HYD	21	127-9630	2	Hose-HYD
13	340-2	6	Fitting-HYD, Straight	22	131-9152	2	Plate-Clamp, Hose
13:1	237-22	1	O-Ring	23	130-7749	2	Sleeve-Protective
13:2	237-42	1	O-Ring				

● Not illustrated

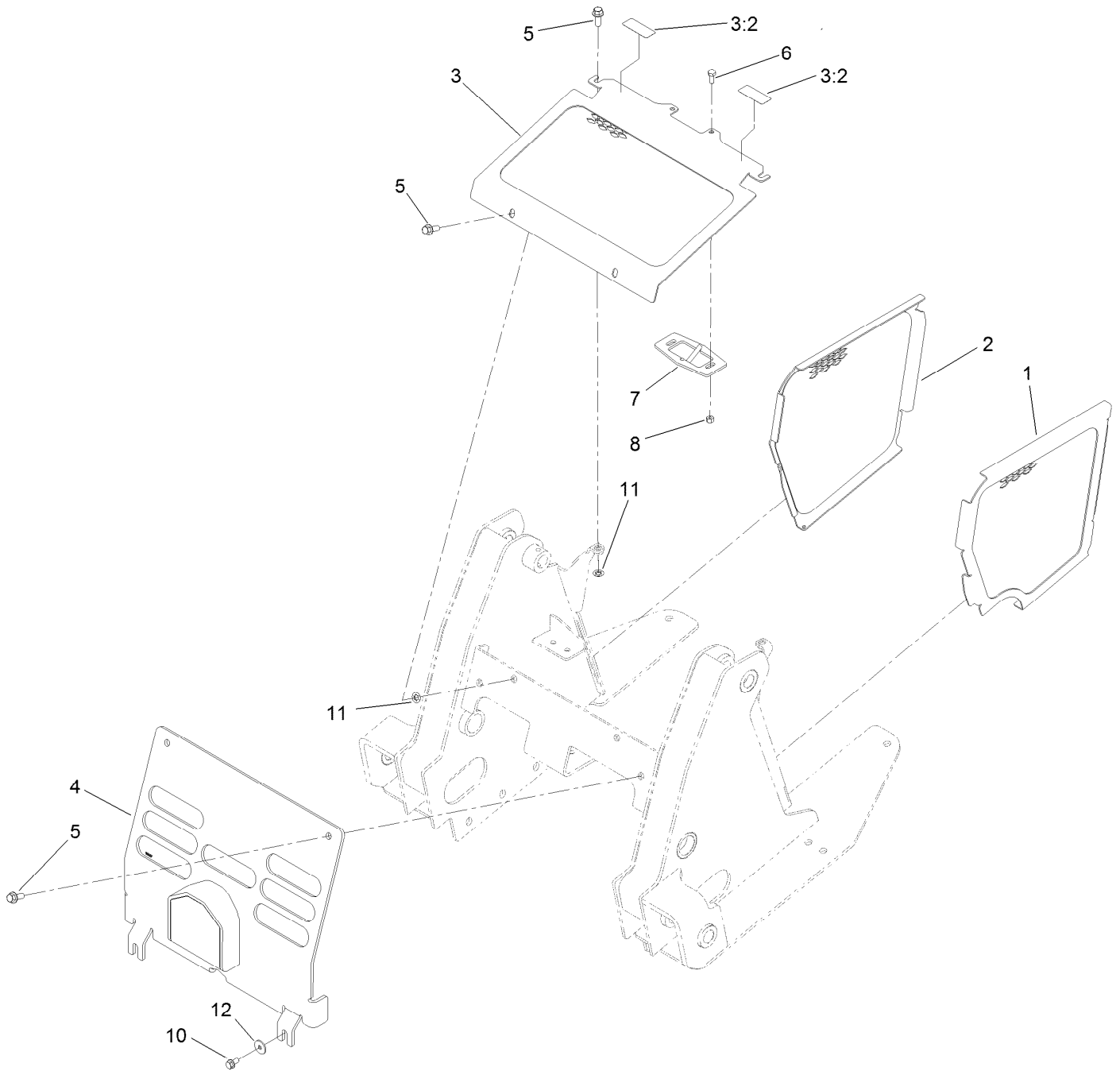
Quick Attach Assembly



Quick Attach Assembly (continued)

<i>Ref.</i>	<i>Part Number</i>	<i>Qty.</i>	<i>Description</i>	<i>Ref.</i>	<i>Part Number</i>	<i>Qty.</i>	<i>Description</i>
1	130-5222	3	Pin-Pivot	4:4	104-5909	1	Stop-RH
2	302-5	3	Fitting-Grease	4:5	104-5903	1	Stop-LH
3	99-5105	3	Bolt-Shoulder	4:6	132-8419	2	Pin-Locking
4	132-8418	1	Quick Attach ASM	4:7	3285-1	2	Pin-Grooved
4:1	130-7708-03	1	Mount-Qtach	4:8	302-5	2	Fitting-Grease
4:2	105-0246	2	Cam	4:9	98-4871	1	Bushing-Tension
4:3	98-4694	2	Spring-Compression				

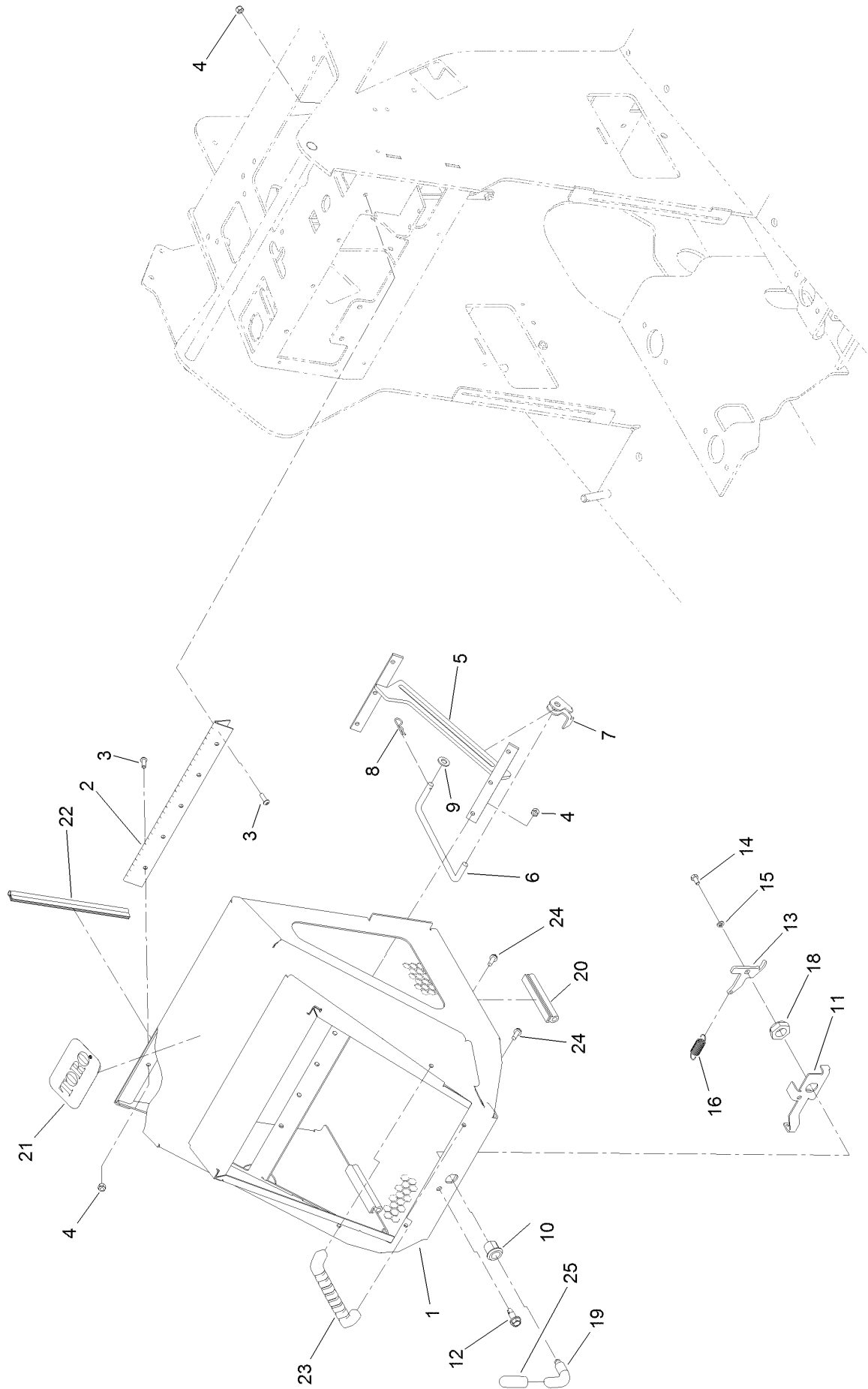
Front Cover and Side Panel Assembly



Front Cover and Side Panel Assembly (continued)

<i>Ref.</i>	<i>Part Number</i>	<i>Qty.</i>	<i>Description</i>	<i>Ref.</i>	<i>Part Number</i>	<i>Qty.</i>	<i>Description</i>
1	132-1734-03	1	Panel-Side, LH	6	322-3	2	Screw-HH
2	132-1733-03	1	Panel-Side, RH	7	130-5239-03	1	Hood Latch/Rod ASM
3	130-5324	1	Cover-Top	8	3296-29	2	Nut-Lock, NI
3:2	115-2047	2	Decal-Surface, Hot	10	3234-14	2	Screw-HHF
4	131-9211-03	1	Cover-Front	11	107-3154	4	Nut-Push
5	3234-42	6	Screw-HHF	12	115-7109	2	Washer-Flat

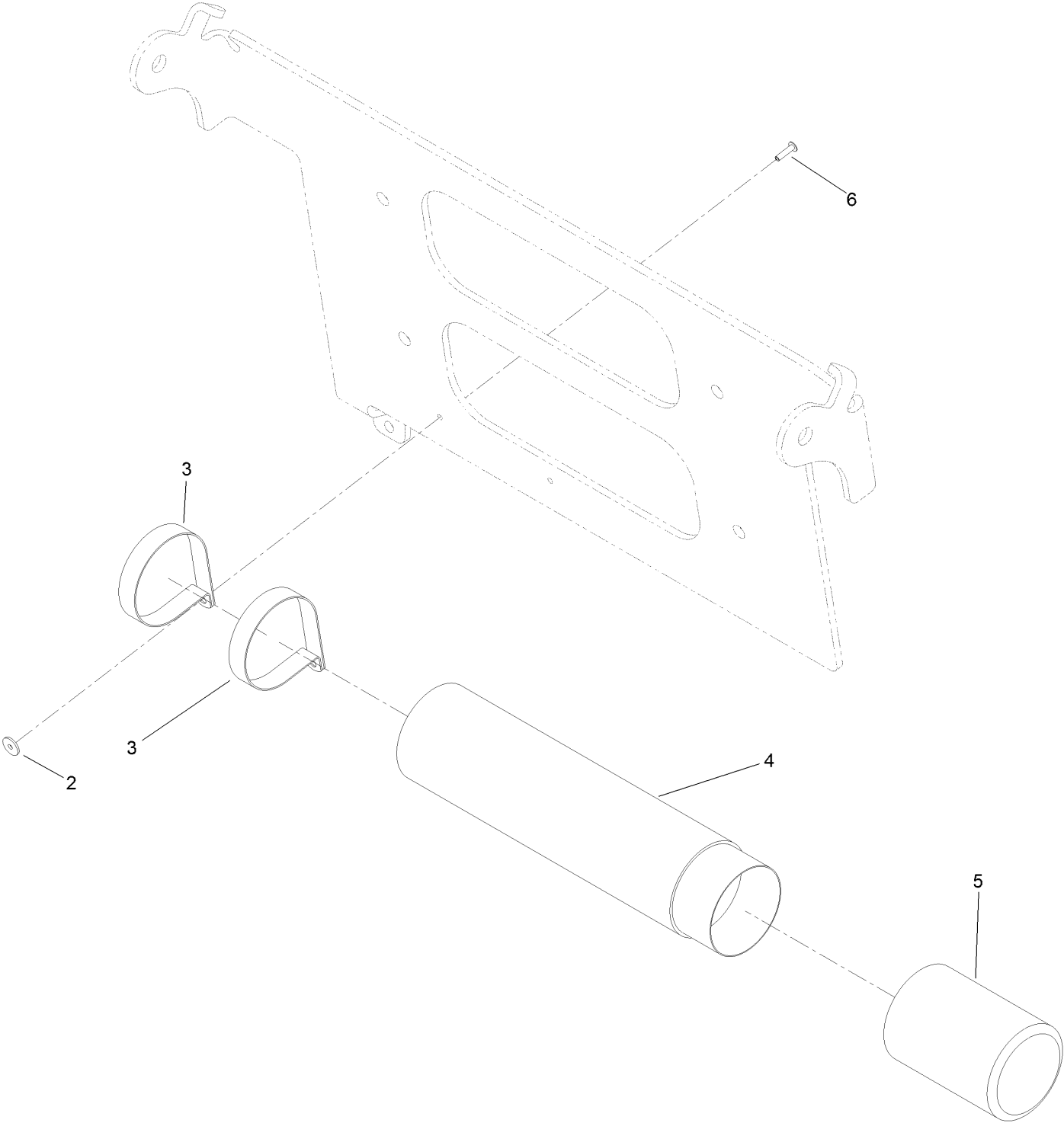
Hood Assembly



Hood Assembly (continued)

<i>Ref.</i>	<i>Part Number</i>	<i>Qty.</i>	<i>Description</i>	<i>Ref.</i>	<i>Part Number</i>	<i>Qty.</i>	<i>Description</i>
1	130-5298-03	1	Engine Hood ASM	13	130-5233	1	Cam-Hooked
2	100-1284	1	Hinge-Hood	14	321-2	1	Screw-HH
3	3274-69	12	Screw-HSBH	15	3253-3	1	Washer-Lock
4	3296-42	12	Nut-Lock, NI	16	104-0869	1	Spring
5	130-5228-03	1	Bracket-Prop, Hood	18	3296-60	1	Nut-Lock, NI
6	108-6357	1	Rod-Support, Hood	19	108-5639	1	Handle-Latch
7	115-0714	1	Bracket-Latch, Locking	20	130-5248	2	Pad-Hood
8	3290-250	1	Pin-Cotter	21	117-0871	1	Decal
9	3256-24	1	Washer-Flat	22	130-5345	1	Trim-Seal, Bulb
10	106-9335	1	Housing-Latch	23	65-5100	2	Handle-Door
11	130-5232-03	1	Bracket-Latch	24	46-8091	4	Screw-HWH
12	105-6245	1	Screw-Tapping	25	133-0206	1	Grip-Lever, Hood

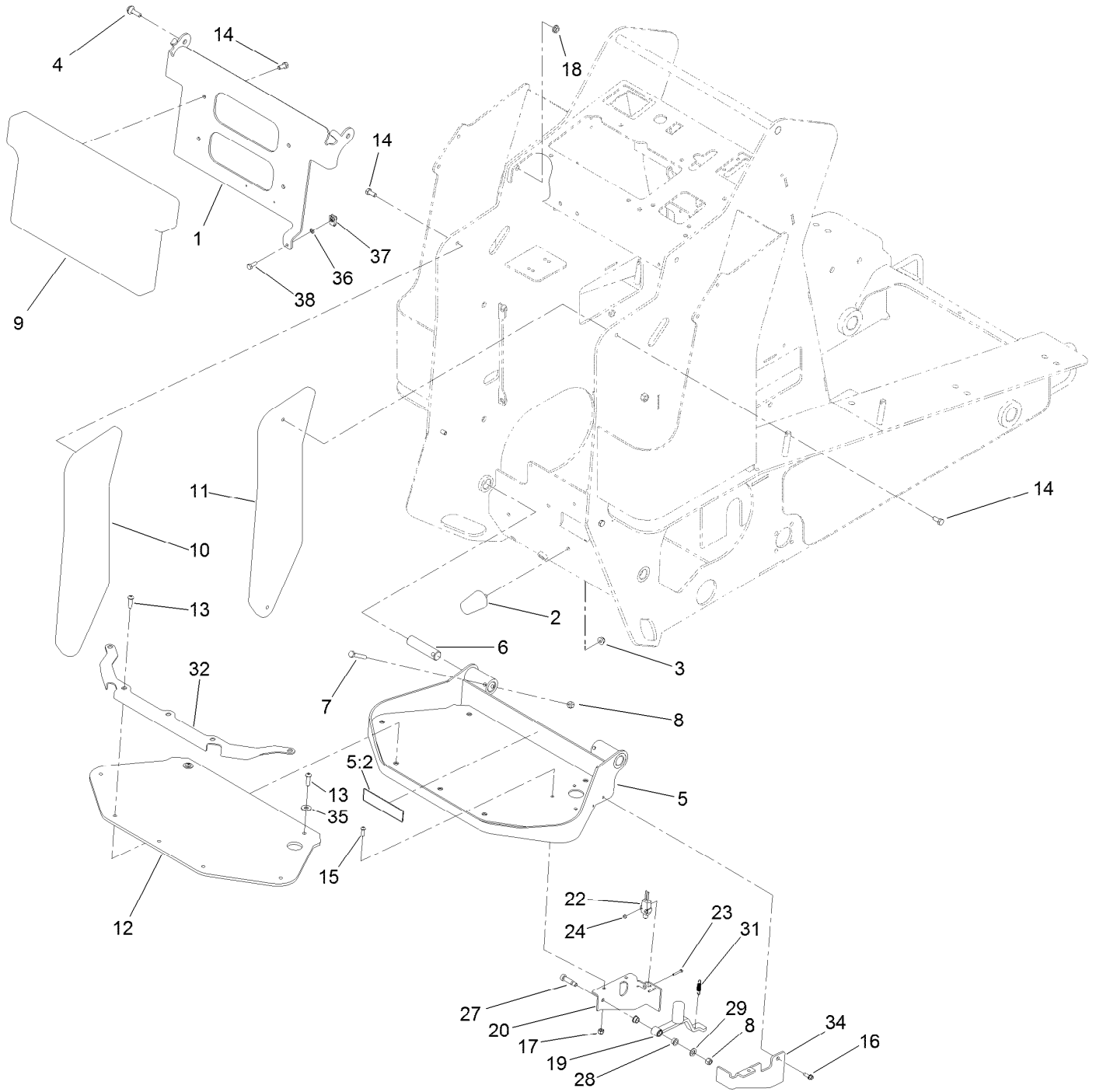
Manual Tube Assembly



Manual Tube Assembly (continued)

<i>Ref.</i>	<i>Part Number</i>	<i>Qty.</i>	<i>Description</i>	<i>Ref.</i>	<i>Part Number</i>	<i>Qty.</i>	<i>Description</i>
2	3269-10	2	Washer-Back	5	104-7048	1	Cap-Housing
3	2412-120	2	Clamp-R	6	3269-17	2	Rivet-Pop
4	104-7050	1	Tube-Manual				

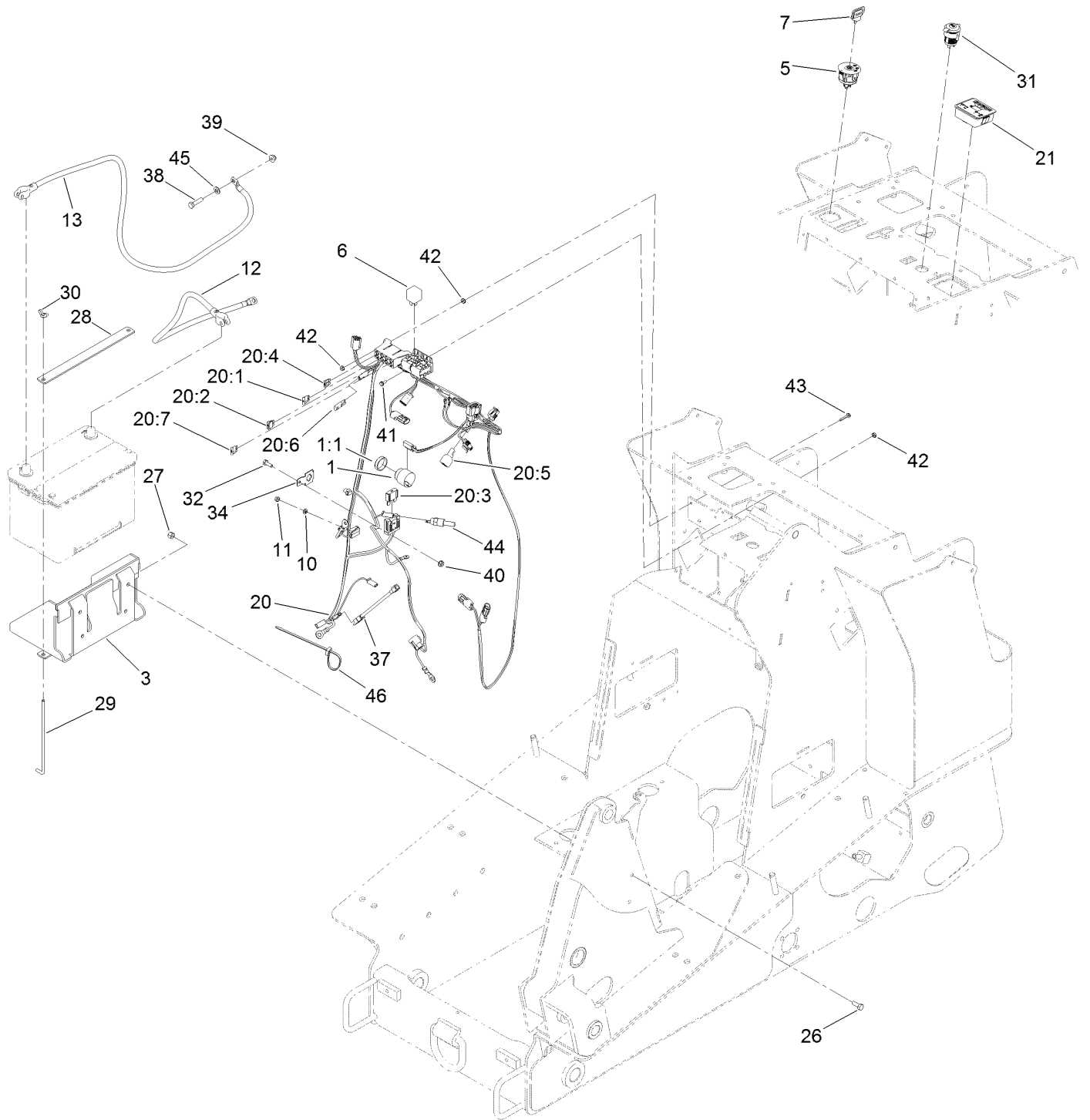
Platform and Cushion Assembly



Platform and Cushion Assembly (continued)

<i>Ref.</i>	<i>Part Number</i>	<i>Qty.</i>	<i>Description</i>	<i>Ref.</i>	<i>Part Number</i>	<i>Qty.</i>	<i>Description</i>
1	132-6026-03	1	Hinge-Pad	17	3296-42	3	Nut-Lock, NI
2	110-5070	3	Bumper	18	32128-20	2	Nut-HF
3	104-8300	3	Nut-Flange, NI	19	130-5293	1	Lever-Switch, Aux
4	108-3744	2	Screw-Shoulder	20	130-5310-03	1	Bracket-Switch, LH
5	130-5322	1	Platform	22	95-8900	1	Switch
5:2	131-0709	1	Decal-Parking Brake	23	32105-9	2	Screw
6	125-3749	2	Pin-Pivot	24	3296-9	2	Nut-Lock
7	322-10	2	Screw-HH	27	114-8629	1	Bolt-Shoulder
8	3296-29	3	Nut-Lock, NI	28	1-603735	2	Bushing-Flanged
9	130-1042	1	Cushion-Pad	29	3256-45	1	Washer-Flat
10	130-1043	1	Cushion-Pad	31	59-3660	1	Spring
11	130-1044	1	Cushion-Pad	32	130-5313-03	1	Plate-Clamp
12	130-1054	1	Pad-Foot	34	130-5311-03	1	Bracket-Switch, RH
13	109-4872	7	Screw-HSH	35	3256-3	2	Washer-Flat
14	322-3	8	Screw-HH	36	1-803037	1	Nut-Retaining
15	3274-69	3	Screw-HSBH	37	107069	1	Clip
16	32104-95	1	Screw-HWH	38	321-4	1	Screw-HH

Electrical Assembly



Electrical Assembly (continued)

<i>Ref.</i>	<i>Part Number</i>	<i>Qty.</i>	<i>Description</i>	<i>Ref.</i>	<i>Part Number</i>	<i>Qty.</i>	<i>Description</i>
1	80-9330	1	Audio Alarm ASM	26	322-4	4	Screw-HH
1:1	104-5107	1	Nut-Plastic, Knurled	27	3296-29	4	Nut-Lock, NI
3	130-5236-03	1	Tray-Battery	28	131-9177-03	1	Strap-Hold Down, Battery
5	110-6764	1	Switch-Ignition	29	130-5220	2	Rod-Hold Down, Battery
6	1-643275	2	Relay	30	1-803038	2	Wingnut
7	63-8360	2	Key-Ignition	31	109-9376	1	Receptacle-12V
10	43-5930	1	Washer-Lock, Spring	32	321-4	1	Screw-HH
11	43-2830	1	Nut-Hex	34	114-5502	1	Clip-Fuse
12	105-0114	1	Cable-Battery, Positive	37	112-2463	1	Harness-Link, Fusible
13	104-0761	1	Cable-Negative	38	322-6	1	Screw-HH
20	127-9605	1	Harness-Wire	39	104-8300	1	Nut-Flange, NI
20:1	218-578	1	Fuse-Blade, 10 Amp	40	32128-33	1	Nut-HF
20:2	109355	1	Fuse-Blade, 15 Amp	41	3290-321	2	Screw-HWH
20:3	94-8002	1	Fuse-Blade, 50 Amp	42	32149-7	6	Nut-Keps
20:4	114241	1	Fuse-Blade, 7.5 Amp	43	117-1701	2	Screw-HWHTF
20:5	103-3895	1	Diode	44	98-3825	1	Switch-Temp
20:6	116-0053	1	Cap-Plug	45	3256-23	1	Washer-Flat
20:7	109101	1	Fuse-Blade, 20 Amp	46	3290-378	1	Tie-Cable
21	130-7635	1	Module-Hour Meter				

Attachments and Accessories

For 22327 TX 1000 Compact Utility Loader

Product Name	Model/Part
Standard Bucket	22340
Adjustable Forks	22341
High Volume Bucket	22342
Narrow Bucket	22520
Auger Head	22805
Universal Swivel Auger Head	22806
9in Full-Flight Auger Bit	22821
12in Full-Flight Auger Bit	22822
6in Full-Flight Auger Bit	22820
15in Full-Flight Auger Bit	22823
18in Auger Bit	22814
24in Auger Bit	22815
30in Auger Bit	22816
12in Auger Bit Extension	22818
24in Auger Bit Extension	22819
High-Torque Trencher Head	22473
High-Speed Trencher Head	22474
Crumber Kit	22464
Trench Filler	22472
Multi-Purpose Tool	22423
Tree Forks	22438
Leveler	23165
48in Hydraulic Blade	22414
Concrete Breaker	23135
Cement Bowl	22442
Snowthrower	22456
Stump Grinder	22429
Grapple Rake	22521
40in Tiller	22445
Soil Cultivator	23102
Direct Drive Power Box Rake	22426
Vibratory Plow	22911
Bore Drive Head	22420
Rod and Reamer	22421

For 22327G TX 1000 Compact Utility Loader

Product Name	Model/Part
Standard Bucket	22340
Adjustable Forks	22341
High Volume Bucket	22342
Narrow Bucket	22520
Auger Head	22805
Universal Swivel Auger Head	22806
9in Full-Flight Auger Bit	22821

Attachments and Accessories (continued)

12in Full-Flight Auger Bit.....	22822
6in Full-Flight Auger Bit	22820
15in Full-Flight Auger Bit.....	22823
18in Auger Bit	22814
24in Auger Bit	22815
30in Auger Bit	22816
12in Auger Bit Extension	22818
24in Auger Bit Extension	22819
High-Torque Trencher Head	22473
High-Speed Trencher Head	22474
Crumber Kit	22464
Trench Filler.....	22472
Multi-Purpose Tool.....	22423
Tree Forks	22438
Leveler.....	23165
48in Hydraulic Blade.....	22414
Concrete Breaker	23135
Cement Bowl	22442
Snowthrower.....	22456
Stump Grinder	22429
Grapple Rake	22521
40in Tiller	22445
Soil Cultivator	23102
Direct Drive Power Box Rake	22426
Vibratory Plow	22911
Bore Drive Head	22420
Rod and Reamer	22421

Notes:

Notes:



Count on it.