

SM300 Exhaust Manifold Adaption

TSB-16-001

Date: December 5, 2016

Model: SM300

Product Improvement:

Laymor has determined that some of the sweepers may be subjected to excessive vibrations resulting in exhaust manifold breakage. This TSB will be fix on fail.

Units associated:

SM300 units delivered between the dates of March 1, 2014 through September, 2016.

Parts needed: Kit: 1000195K

- 1 EA. 1000194 – Exhaust Downpipe
- 1 EA. 9107103 – Exhaust Manifold
- 1 EA. 9107104 – Exhaust Manifold Gasket
- 1 EA. 1000193 – Muffler Bracket
- 1 EA. 9101778 - Exhaust Gasket
- 1 EA. 100176 – Muffler Clamp
- 4 EA. 011322 - Washer

Approved SRT:

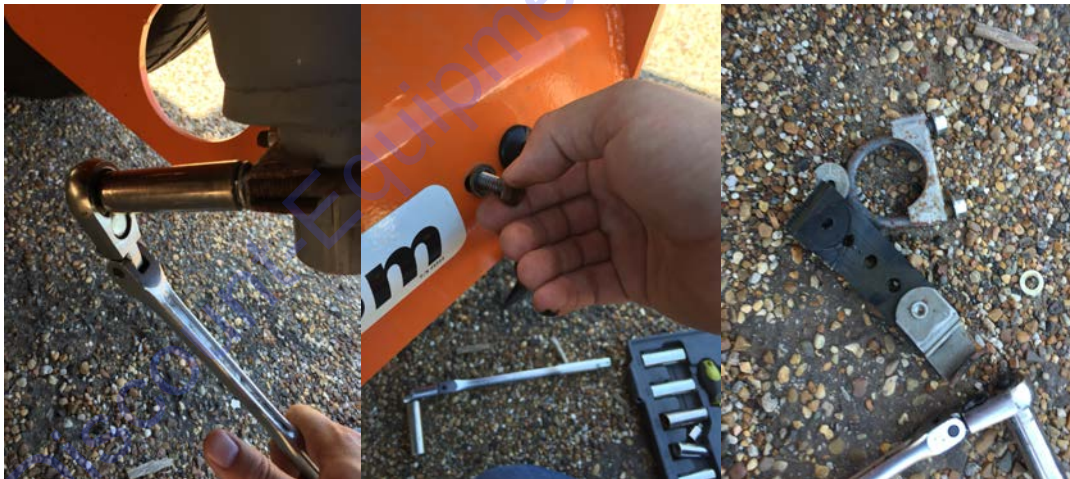
The Laymor approved standard repair time for this service bulletin is 1.5 hours.

Tools needed:

- SAE socket set ¼" to 1"
- SAE wrench set 5/16" to 1"
- ¼" drive Ratchet
- 6 MM Hex bit or Allen head socket (exhaust bolts)
- 3/8" drive ratchet or impact wrench
- 17 MM socket (motor mount bolts)
- Torque wrench up to 50 Ft. Lbs. (motor mount bolts)
- Dead blow hammer
- Thread locker / Loctite

Instructions:

1. Start by removing the lower exhaust hanger strap located below the right side of the radiator. Discard strap.



2. Next remove the exhaust down pipe bolts (4 ea.)



3. Remove existing exhaust manifold downpipe and remove muffler. Discard downpipe.



4. Remove the top two right rear motor mount bolts.



5. Attach muffler support bracket onto the right rear motor mount. Apply thread locker to both bolts and torque to 50 Ft. Lbs. using the 17 MM socket.

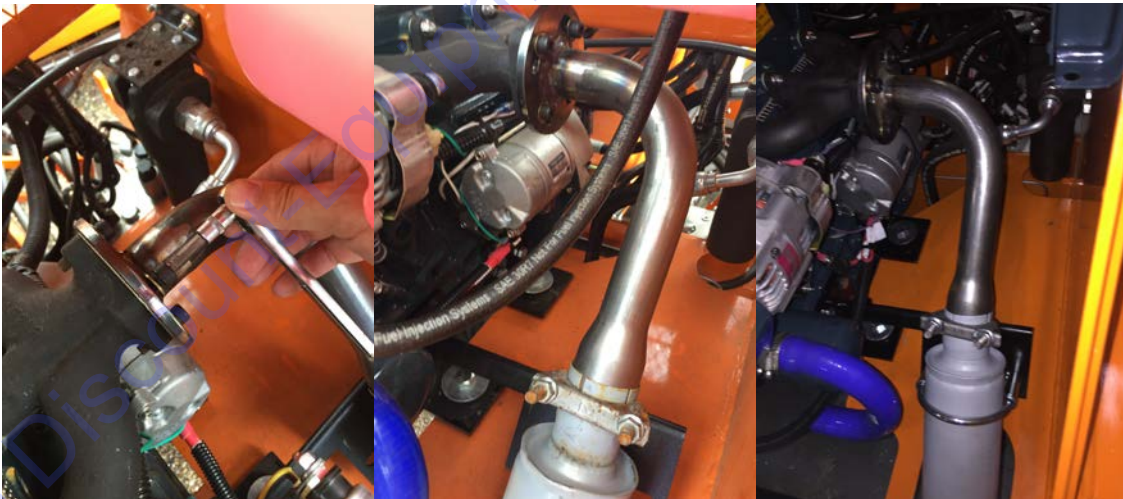
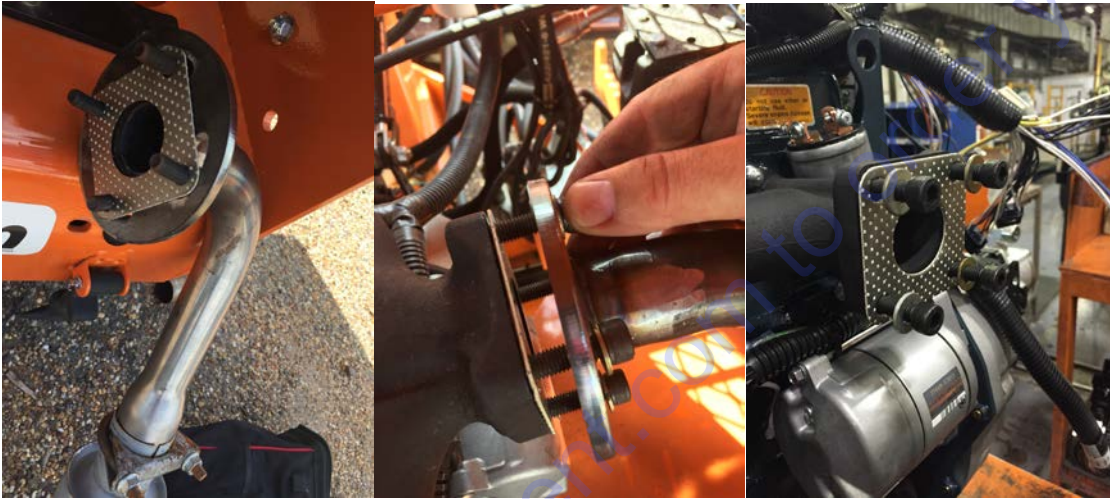


7. Install muffler to down pipe. Install muffler to assembly to new muffler mount bracket.



Go to Discount-Equipment.com to order your parts

8. Install exhaust muffler U-bolt clamp and leave slightly loose. Install muffler down pipe assembly to exhaust manifold. Torque manifold bolts to ? Tighten the U-bolt clamp to ?



REVISION HISTORY

REVISION	DATE	DESCRIPTION OF CHANGE
NEW	12/5/2016	NEW PROCEDURE

APPROVALS	AUTHOR	DATE
Design Engineer	David Sandgren	12/5/2016
Director of Engineer	Andy Cooper	12/5/2016
Director of Quality	Barbara McCullough	12/5/2016

Go to Discount-Equipment.com to order your parts

PARTS FINDER

**Search Website
by Part Number**



**Search Manual
Library For Parts
Manual & Lookup Part
Numbers – Purchase
or Request Quote**

Search Manuals

Enter your information to help us find the right parts manual for your machine.

* Brand:

* Model:

* Serial:

* Part Number:

SEARCH

**Can't Find Part or
Manual? Request Help
by Manufacturer,
Model & Description**

Parts Order Form

Please fill in the following information to help us find the right part for your machine.

Manufacturer:	<input type="text"/>
Model:	<input type="text"/>
Description:	<input type="text"/>
Part Number:	<input type="text"/>
Quantity:	<input type="text"/>
Notes:	<input type="text"/>

Submit

Discount-Equipment.com is your online resource for quality parts & equipment.

Florida: **561-964-4949** Outside Florida TOLL FREE: **877-690-3101**

Need parts?

Click on this link: <http://www.discount-equipment.com/category/5443-parts/> and choose one of the options to help get the right parts and equipment you are looking for. Please have the machine model and serial number available in order to help us get you the correct parts. If you don't find the part on the website or on one of the online manuals, please fill out the request form and one of our experienced staff members will get back to you with a quote for the right part that your machine needs.

We sell worldwide for the brands: Genie, Terex, JLG, MultiQuip, Mikasa, Essick, Whiteman, Mayco, Toro Stone, Diamond Products, Generac Magnum, Airman, Haulotte, Barreto, Power Blanket, Nifty Lift, Atlas Copco, Chicago Pneumatic, Allmand, Miller Curber, Skyjack, Lull, Skytrak, Tsurumi, Husquvarna Target, Stow, Wacker, Sakai, Mi-T-M, Sullair, Basic, Dynapac, MBW, Weber, Bartell, Bennar Newman, Haulotte, Ditch Runner, Menegotti, Morrison, Contec, Buddy, Crown, Edco, Wyco, Bomag, Laymor, EZ Trench, Bil-Jax, F.S. Curtis, Gehl Pavers, Heli, Honda, ICS/PowerGrit, IHI, Partner, Imer, Clipper, MMD, Koshin, Rice, CH&E, General Equipment, Amida, Coleman, NAC, Gradall, Square Shooter, Kent, Stanley, Tamco, Toku, Hatz, Kohler, Robin, Wisconsin, Northrock, Oztec, Toker TK, Rol-Air, APT, Wylie, Ingersoll Rand / Doosan, Innovatech, Con X, Ammann, Mecalac, Makinex, Smith Surface Prep, Small Line, Wanco, Yanmar