

SM300 Baffle Radiator Replacement LAY TSB-15-004

Date: July 16, 2015

Model: SM300

Product Issue:

Laymor has determined that the some of the radiators are subjected to overheating in the 3 wheel sweepers. This TSB will be fix on fail.

Parts kit: #9107159K

- 1000047 Baffle radiator 1 ea.
- 9107153 Radiator bolt 2 ea.
- 1000040 Bottom radiator mount bracket 1 ea.
- 1000041 Top radiator mount bracket 1 ea.
- 011321 Washer 8 ea.
- 441568 Bolt 3 ea.
- 440636 nut 3 ea.
- 407502 screw 2ea.
- 440628 nut ea.
- 1000067 motor mount

PARTS FINDER

**Search Website
by Part Number**



**Search Manual
Library For Parts
Manual & Lookup Part
Numbers – Purchase
or Request Quote**

Search Manuals

Enter your information to help us find the right parts manual for your machine.

* Brand:

* Model:

* Serial:

* Part Number:

SEARCH

**Can't Find Part or
Manual? Request Help
by Manufacturer,
Model & Description**

Parts Order Form

Please fill in the following information to help us find the right part for your machine.

Manufacturer:	<input type="text"/>
Model:	<input type="text"/>
Description:	<input type="text"/>
Part Number:	<input type="text"/>
Quantity:	<input type="text"/>
Notes:	<input type="text"/>

Submit

Discount-Equipment.com is your online resource for quality parts & equipment.

Florida: **561-964-4949** Outside Florida TOLL FREE: **877-690-3101**

Need parts?

Click on this link: <http://www.discount-equipment.com/category/5443-parts/> and choose one of the options to help get the right parts and equipment you are looking for. Please have the machine model and serial number available in order to help us get you the correct parts. If you don't find the part on the website or on one of the online manuals, please fill out the request form and one of our experienced staff members will get back to you with a quote for the right part that your machine needs.

We sell worldwide for the brands: Genie, Terex, JLG, MultiQuip, Mikasa, Essick, Whiteman, Mayco, Toro Stone, Diamond Products, Generac Magnum, Airman, Haulotte, Barreto, Power Blanket, Nifty Lift, Atlas Copco, Chicago Pneumatic, Allmand, Miller Curber, Skyjack, Lull, Skytrak, Tsurumi, Husquvarna Target, Stow, Wacker, Sakai, Mi-T-M, Sullair, Basic, Dynapac, MBW, Weber, Bartell, Bennar Newman, Haulotte, Ditch Runner, Menegotti, Morrison, Contec, Buddy, Crown, Edco, Wyco, Bomag, Laymor, EZ Trench, Bil-Jax, F.S. Curtis, Gehl Pavers, Heli, Honda, ICS/PowerGrit, IHI, Partner, Imer, Clipper, MMD, Koshin, Rice, CH&E, General Equipment, Amida, Coleman, NAC, Gradall, Square Shooter, Kent, Stanley, Tamco, Toku, Hatz, Kohler, Robin, Wisconsin, Northrock, Oztec, Toker TK, Rol-Air, APT, Wylie, Ingersoll Rand / Doosan, Innovatech, Con X, Ammann, Mecalac, Makinex, Smith Surface Prep, Small Line, Wanco, Yanmar

Tools needed:

- SAE socket set ¼" to 1"
- SAE wrench set 5/16" to 1"
- ¼" drive Ratchet
- 3/8" drive impact wrench
- 3/8" Drill
- Drill bit set
- Pliers
- Automotive hose pick
- Paint pin
- Tape measure
- Drip pan
- Funnel
- 1 gallon 50/50 extended life coolant
- Thread locker / Loctite

Approved SRT:

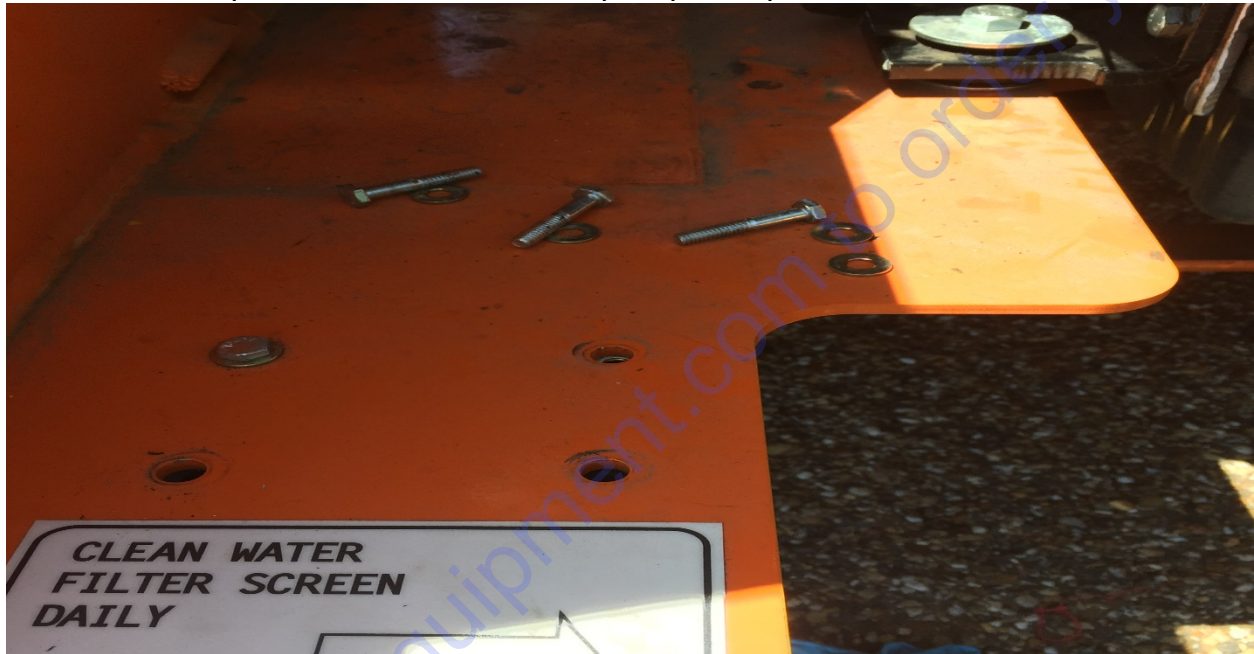
The Laymor approved standard repair time for this service bulletin is 3 hours.

Instructions:

Pull unit into approved level work area. Turn the engine off and place it in park.

1. Open radiator pet cock and remove radiator cap to drain coolant into a drip pan
2. Remove top radiator hose from thermostat
3. Remove overflow bottle hose from radiator neck
4. Remove isolator bracket assembly from top radiator mount and discard
5. Remove bottom radiator hose to water pump
6. Remove radiator mounting bolts (2)
7. Remove radiator
8. Remove radiator baffle flap brackets & hardware (12 bolts & washers)
9. Disconnect and remove battery
10. Secure motor by placing a jack underneath the oil pan
11. Remove both motor mounts

12. Remove existing radiator mounting plates (2)
13. Apply thread locker/ Loctite to motor mount bolts
14. Install new motor mount spacers with motor mounts
15. Torque motor mount bolts in a "X" pattern to 50 Ft. Lbs.
16. Install battery and connect cables
17. Remove existing 3 bolts on left rear of frame
18. Leave top left bolt to hold water pump into place

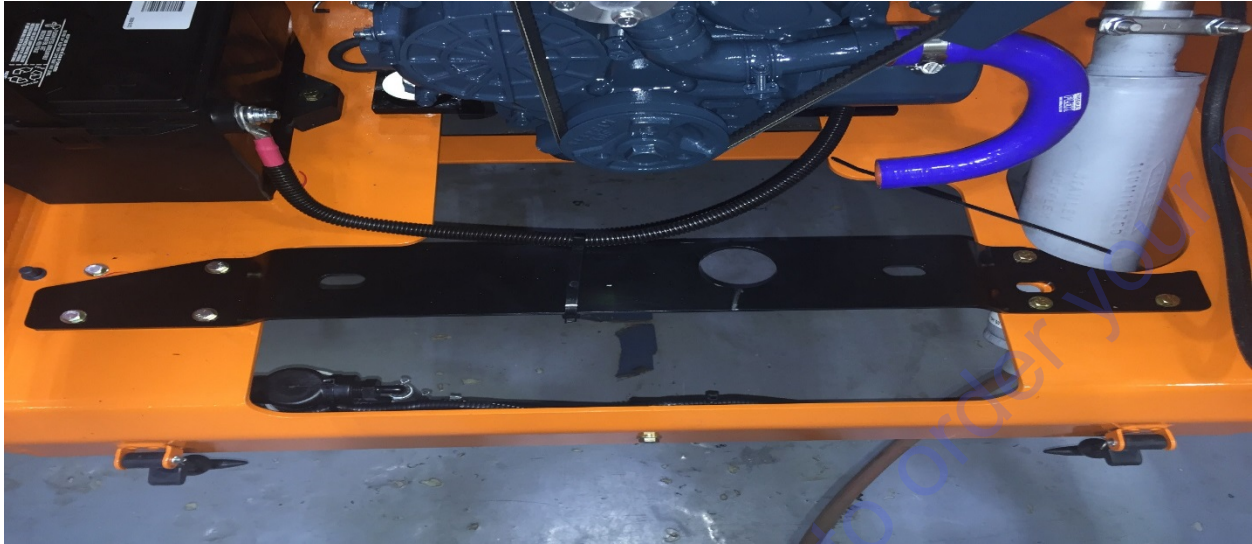


19. Install new bottom radiator mount (1000040) using 3 bolts (441568) & nuts (440636)



16a. Slide and center the new radiator mount plate all the way to the left hand side. Install 3 existing bolts on the left side securing water pump. This will help with the fan clearance. Drill 3 holes with a $\frac{1}{4}$ " bit on the right hand side. Install right hand side mounting bolts.





20. Remove 3 way shutdown located inside the top frame



21. Install new top radiator mounting plate (1000041) between the frame and the 3 way shutdown box. Use 2 screws (407502), washers (011321) & nuts (440628) in parts kit. Leave the bolts slightly loose to aid in radiator alignment



22. Install new radiator
23. Install bottom radiator hose to water pump
24. Install top radiator hose from thermostat
25. Install overflow bottle hose at the radiator fill neck
26. Install existing isolator for top radiator mount
27. Install bottom radiator mounting bolts (2 ea.) (9107153)
28. Tighten top radiator mounting plate screws (2ea.)
29. Install radiator baffle flaps with existing brackets (2) (12 screws & washers) from old radiator



30. Close radiator pet cock and fill radiator with 50/50 Extended Life Coolant
31. Install radiator cap
32. Start engine
33. Run engine for 8 minutes
34. Turn off engine
35. Open radiator cap to purge
36. Top off radiator with 50/50 Coolant
37. Install radiator cap

REVISION HISTORY

REVISION	DATE	DESCRIPTION OF CHANGE
0	7-16-15	NEW PROCEDURE

APPROVALS:

AUTHOR	DATE:
Danals Dunavan	7-16-15
Engineering	7-16-15
Director of Quality	7-16-15

Go to Discount-Equipment.com to order your parts

PARTS FINDER

**Search Website
by Part Number**



**Search Manual
Library For Parts
Manual & Lookup Part
Numbers – Purchase
or Request Quote**

Search Manuals

Enter your information to help us find the right parts manual for your machine.

* Brand:

* Model:

* Serial:

* Part Number:

SEARCH

**Can't Find Part or
Manual? Request Help
by Manufacturer,
Model & Description**

Parts Order Form

Please fill in the following information to help us find the right part for your machine.

Manufacturer:	<input type="text"/>
Model:	<input type="text"/>
Description:	<input type="text"/>
Part Number:	<input type="text"/>
Quantity:	<input type="text"/>
Notes:	<input type="text"/>

Submit

Discount-Equipment.com is your online resource for quality parts & equipment.

Florida: **561-964-4949** Outside Florida TOLL FREE: **877-690-3101**

Need parts?

Click on this link: <http://www.discount-equipment.com/category/5443-parts/> and choose one of the options to help get the right parts and equipment you are looking for. Please have the machine model and serial number available in order to help us get you the correct parts. If you don't find the part on the website or on one of the online manuals, please fill out the request form and one of our experienced staff members will get back to you with a quote for the right part that your machine needs.

We sell worldwide for the brands: Genie, Terex, JLG, MultiQuip, Mikasa, Essick, Whiteman, Mayco, Toro Stone, Diamond Products, Generac Magnum, Airman, Haulotte, Barreto, Power Blanket, Nifty Lift, Atlas Copco, Chicago Pneumatic, Allmand, Miller Curber, Skyjack, Lull, Skytrak, Tsurumi, Husquvarna Target, Stow, Wacker, Sakai, Mi-T-M, Sullair, Basic, Dynapac, MBW, Weber, Bartell, Bennar Newman, Haulotte, Ditch Runner, Menegotti, Morrison, Contec, Buddy, Crown, Edco, Wyco, Bomag, Laymor, EZ Trench, Bil-Jax, F.S. Curtis, Gehl Pavers, Heli, Honda, ICS/PowerGrit, IHI, Partner, Imer, Clipper, MMD, Koshin, Rice, CH&E, General Equipment, Amida, Coleman, NAC, Gradall, Square Shooter, Kent, Stanley, Tamco, Toku, Hatz, Kohler, Robin, Wisconsin, Northrock, Oztec, Toker TK, Rol-Air, APT, Wylie, Ingersoll Rand / Doosan, Innovatech, Con X, Ammann, Mecalac, Makinex, Smith Surface Prep, Small Line, Wanco, Yanmar