

Millennium Model LPH400

Compact, Portable Load Bank
200 to 400 KW



Portable for Load Testing at Multiple Sites

Compact, Portable, Easy to Transport and Operate

Large Load Capacity - up to 400 KW

Rugged Aluminized Steel Enclosure with Casters

Convenient Operator Controls with Digital Metering and Data Logging Software Included

The Avtron Millennium Load Bank is a portable, self-contained unit that simulates electrical loads.

The Millennium Load Bank is ideal for routine load testing of standby diesel generating systems or for factory production line testing of (UPS) Uninterruptible Power Supplies, turbines, or engine generator sets. This model provides resistive loading up to 400 KW at either 240/480 or 480 Volts AC in a convenient and easy-to-use package.

This load bank features horizontal air discharge to provide a low profile design for easy entry into areas such as parking garages. This unit is simple to set up and operate by a single technician, saving valuable time in the field. An optional control power transformer

is also available for sites where 120 VAC power is not readily available.

The Millennium Load Bank features the new standard in Digital Metering which includes the Avtron Advanced Digital Monitoring System (ADMS™). The ADMS meter provides faceplate digital display of Volts, Amps, Frequency, and KW. The Communicator EXT™ Data Logging Software allows Real Time Data Acquisition and trending of all meter parameters from your Laptop PC or PDA. An Infrared/USB interface cable is included for "Plug and Play" convenience.

This unit incorporates state-of-the-art design features, including a heavy

gauge aluminized steel enclosure, continuously supported resistor elements on stainless steel rods, and an industrial blower.

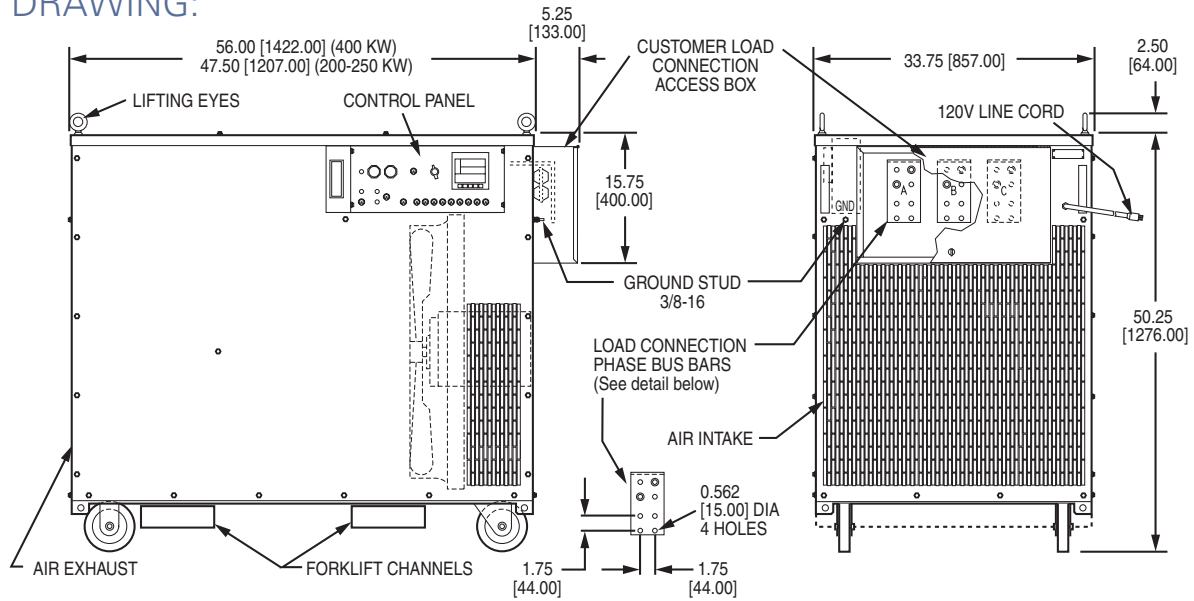
Legendary Avtron quality combined with simple operation and maintenance will provide years of trouble free service.

Avtron's extensive line of Load Bank and Industrial Resistor Products are solid performers used throughout the world.

For total technical support or additional information, please contact Avtron at (216) 573-7600 or LBsales@emerson.com.

Millennium Portable Load Bank (Model LPH400)

OUTLINE DRAWING:



SPECIFICATIONS:

CONSTRUCTION: A rugged aluminized steel enclosure with screened inlet and exhaust openings. Two fixed and two lockable swivel casters provide mobility. Lifting eyes, forklift channels, and tie-down hooks are standard.

CONTROL POWER: The Millennium Load Bank requires control power of 120 VAC, single phase, 60 Hz (control transformer optional).

COOLING: The resistive elements are air cooled by an integrally mounted 3 phase blower (250 KW or 400 KW unit) or a single phase blower rated 120 VAC (200 KW unit). No additional cooling period is required when load is removed.

CONTROLS: The operator control panel includes a MASTER LOAD ON-OFF switch, load step ON-OFF industrial toggle switches, BLOWER ON-OFF push buttons with a BLOWER FAILURE light, and BLOWER and LOAD VOLTAGE selector switches (dual voltage units only).

DIGITAL METERING: Avtron Advanced Digital Monitoring System (ADMS™) is provided for display of Volts, Amps, Frequency, and KW. ADMS™ also includes Communicator EXT™ Data Logging Software.

SAFETY CIRCUITS: The Millennium Load Bank features branch circuit fusing on all load steps. Wrong voltage protection, motor overload protection, overtemperature protection, and cooling air loss protection are also provided.

WEIGHT:
200-250 KW unit: approx. 650 lbs. [295 kg]
400 KW unit: approx. 785 lbs. [360 kg]

OPTIONS:

- Control Power Transformer
- Vinyl Storage Dust Cover
- Designs for international 50/60 Hz voltages or custom DC designs are also available. Consult Factory.

MILLENNIUM LOAD CAPACITY RATINGS:

| Total Load KW | Voltage Rating | Minimum Load Step Resolution in KW |
|---------------|-----------------------------|------------------------------------|
| 200 | 240/480 VAC, 3 phase, 60 Hz | 5, 10, 10, 25, 50, 100 |
| 250 | 240/480 VAC, 3 phase, 60 Hz | 5, 10, 10, 25, 50, 50, 100 |
| 400 | 240/480 VAC, 3 phase, 60 Hz | 5, 10, 10, 25, 50, 100, 100, 100 |
| 400 | 480 VAC, 3 phase, 60 Hz | 5, 10, 10, 25, 50, 100, 100, 100 |

ADMS™ is a trademark of Avtron LoadBank, Inc. Communicator EXT™ is a trademark of Electro Industries/GaugeTech. All dimensions are in inches [millimeters]. Specifications subject to change without notice.