



DUOSCREEED™

Form-to-form  
and wet screeding  
with one machine



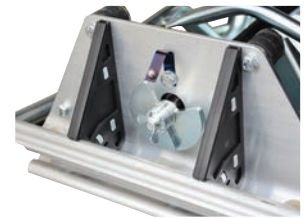
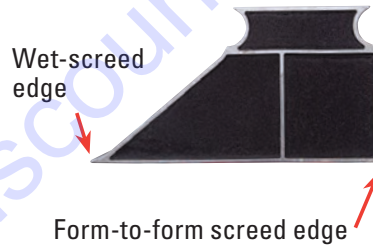
Multiquip's DuoScreed utilizes a unique blade profile that enables one person to strike-off concrete floors. The screed's vibratory action embeds aggregate and reduces air voids, producing a strong, dense slab, while eliminating the strenuous, time-consuming labor of manual screeding.

The DuoScreed is ideal for a wide range of applications. Unlike competitive designs (which require different blades for each application), the DuoScreed uses a unique reversing blade. Simply adjusting the operator handles up or down allows for the usage of either the curved form-to-form edge or the wet-screeding edge. Reference our instructional video at [Multiquip.com](http://Multiquip.com) for further information.

- **Flexible drive shaft** requires no maintenance. Its straight design eliminates undesired wear.
- **Fingertip throttle control** adjusts vibrator speed.
- **Blade options available** in sizes from 6 to 16 feet total length.
- **Lightweight blade construction** — one-piece extruded aluminum, less than two pounds per linear foot.
- **Easy to use** — highly maneuverable around pipes or obstructions.
- **Adjustable operator's handle** — position handle at waist height to utilize the form-to-form edge. Position handle at knee height before lifting for operation to utilize wet-screed edge.
- **Portable design** — the blade is quickly removed without tools; handles fold for storage.
- **Honda powered** — 1.5 HP four-stroke engine



*Extruded aluminum blade features a design that easily clamps on the power unit with no tools required.*



Eccentric weight cover requires no tools to remove. Weights adjust for larger or smaller blades

## Specifications

Model .....	DSGPULW
Blade widths (ft.)/weights (lbs.) .....	6 (14 lbs.), 8 (18 lbs.), 10 (23 lbs.), 12 (28 lbs.), 14 (32 lbs.), 16 (37 lbs.)
Blade construction .....	Aluminum
Engine .....	Honda GX-35SAT
HP (kW) .....	1.3 (1.0)
Drive system .....	Flexible shaft
Power Unit weight .....	32 lb.

\* Engine power ratings are calculated by the individual engine manufacturer and the rating method may vary among engine manufacturers. Multiquip Inc. and its subsidiary companies makes no claim, representation or warranty as to the power rating of the engine on this equipment and disclaims any responsibility or liability of any kind whatsoever with respect to the accuracy of the engine power rating. Users are advised to consult the engine manufacturer's owners manual and its website for specific information regarding the engine power rating.

**Your Multiquip dealer is:**



# DuoScreed

© COPYRIGHT 2018, MULTIQUIP INC.

**TO PURCHASE THIS PRODUCT PLEASE CONTACT US**



**Equipment Financing and  
Extended Warranties Available**



**Discount-Equipment.com is your online resource for  
commercial and industrial quality parts and equipment sales.**

**561-964-4949**

**visit us on line @ [www.discount-equipment.com](http://www.discount-equipment.com)**

Select an option below to find your Equipment

**Search by Manufacturer**

**Search by Product Type**

**Request a Quote**

We sell worldwide for the brands: Genie, Terex, JLG, MultiQuip, Mikasa, Essick, Whiteman, Mayco, Toro Stone, Diamond Products, Generac Magnum, Airman, Haulotte, Barreto, Power Blanket, Nifty Lift, Atlas Copco, Chicago Pneumatic, Allmand, Miller Curber, Skyjack, Lull, Skytrak, Tsurumi, Husquvarna Target, Stow, Wacker, Sakai, Mi-T-M, Sullair, Basic, Dynapac, MBW, Weber, Bartell, Bennar Newman, Haulotte, Ditch Runner, Menegotti, Morrison, Contec, Buddy, Crown, Edco, Wyco, Bomag, Laymor, EZ Trench, Bil-Jax, F.S. Curtis, Gehl Pavers, Heli, Honda, ICS/PowerGrit, IHI, Partner, Imer, Clipper, MMD, Koshin, Rice, CH&E, General Equipment, Amida, Coleman, NAC, Gradall, Square Shooter, Kent, Stanley, Tamco, Toku, Hatz, Kohler, Robin, Wisconsin, Northrock, Oztec, Toker TK, Rol-Air, APT, Wylie, Ingersoll Rand / Doosan, Innovatech, Con X, Ammann, Mecalac, Makinex, Smith Surface Prep, Small Line, Wanco, Yanmar