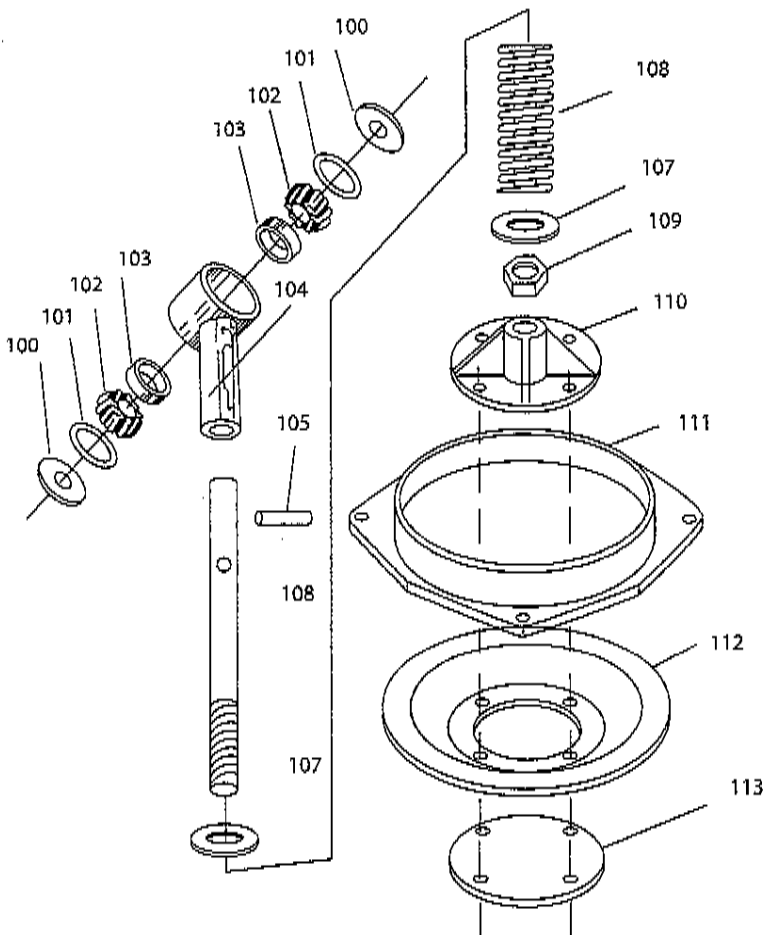
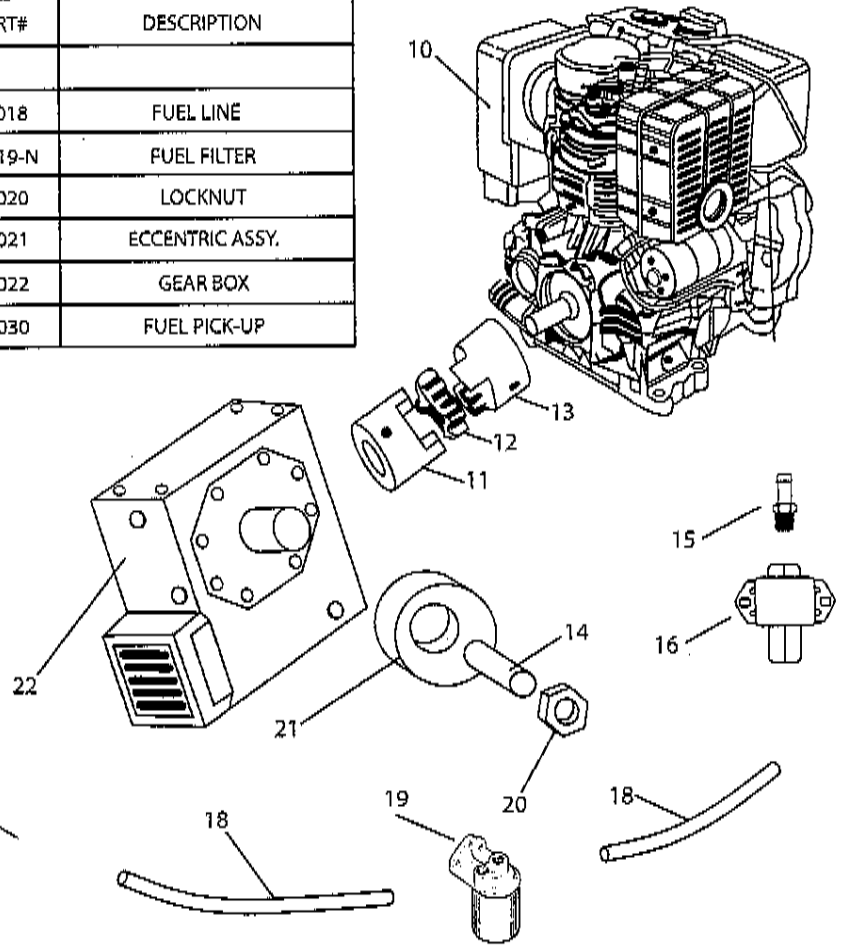


# POWER TRAIN & FUEL SYSTEM

REF#	PART#	DESCRIPTION	REF#	PART#	DESCRIPTION
10	15010	DIESEL ENGINE	17		
11	15011	COUPLING (GEAR BOX)	18	17018	FUEL LINE
12	15012	SPIDER	19	15019-N	FUEL FILTER
13	16013	COUPLING (ENGINE)	20	15020	LOCKNUT
14	16026	ECCENTRIC SPINDLE	21	16021	ECCENTRIC ASSY.
15	15027	FUEL FITTING	22	16022	GEAR BOX
16	15028	ELECTRIC FUEL PUMP	23	16030	FUEL PICK-UP



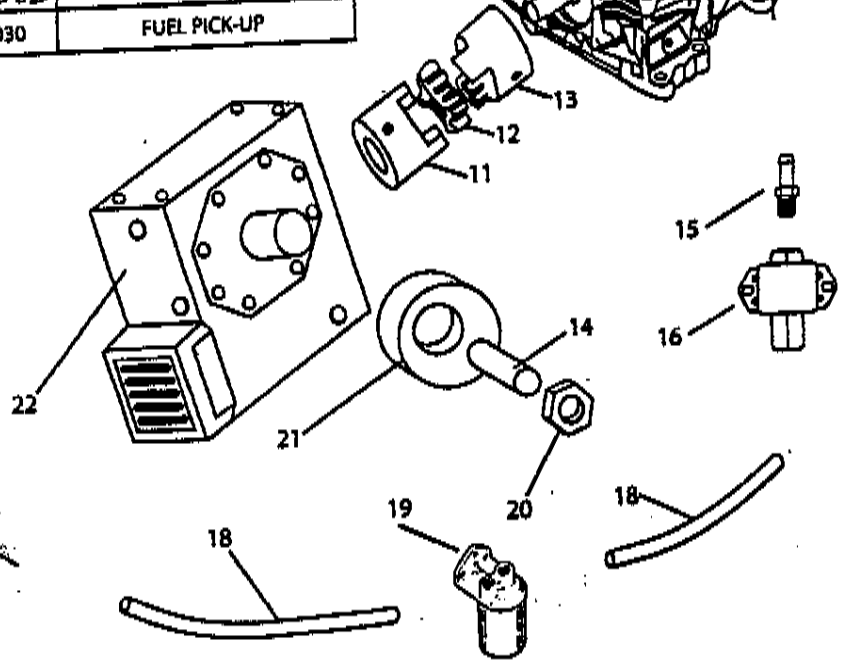
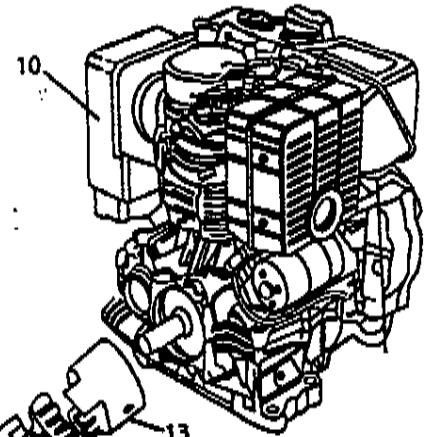
## CONNECTING ROD ASSEMBLY

REF#	PART#	DESCRIPTION
100	16100	REVELED FLAT WASHER
101	15101	O-RING
102	15102	BEARING CONE
103	15103	BEARING CUP
104	16104	ROD END WELDMENT
105	15105	SPIRAL PIN
106	16106	CONNECTING ROD
107	15107	FLAT WASHER
108	15108	COMPRESSION SPRING
109	15109	JAM NUT
110	16110	DIAPHRAGM TOP PLATE
111	16111	CLAMP RING
112	17112	DIAPHRAGM
113	16113	DIAPHRAGM BOTTOM PLATE

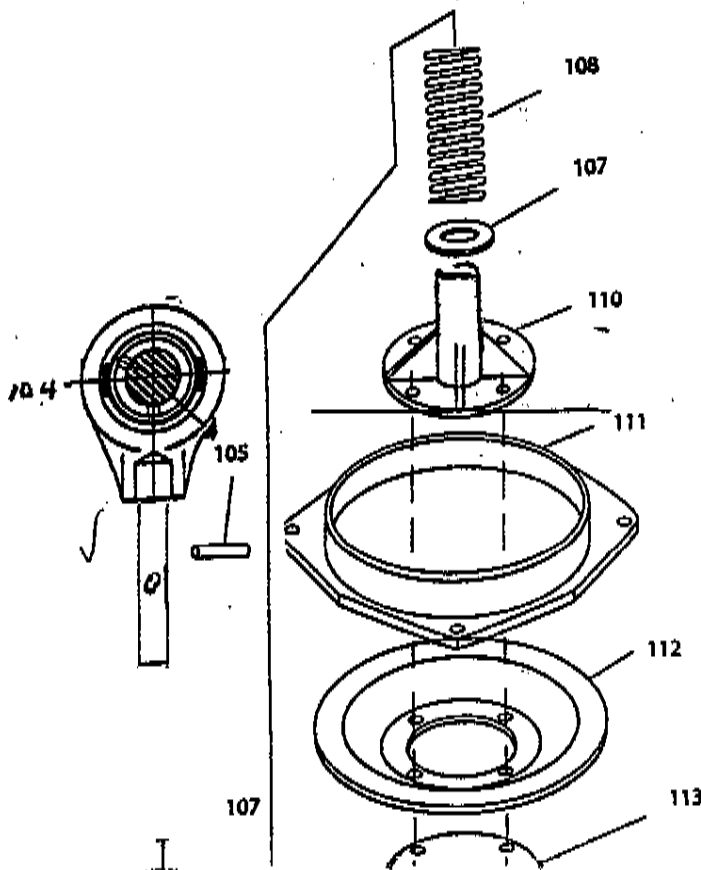
\*NOT SHOWN  
(PN #19017 SOLID CONN. ROD)

# POWER TRAIN & FUEL SYSTEM

REF#	PART#	DESCRIPTION	REF#	PART#	DESCRIPTION
10	15010	DIESEL ENGINE	17		
11	16011	COUPLING (GEAR BOX)	18	17018	FUEL LINE
12	15012	SPIDER	19	15019-N	FUEL FILTER
13	16013	COUPLING (ENGINE)	20	40017	LOCKNUT
14	16026	ECCENTRIC SPINDLE	21	16021	ECCENTRIC ASSY.
15	15027	FUEL FITTING	22	15022	GEAR BOX
16	15028	ELECTRIC FUEL PUMP	23	16030	FUEL PICK-UP



# CONNECTING ROD ASSEMBLY



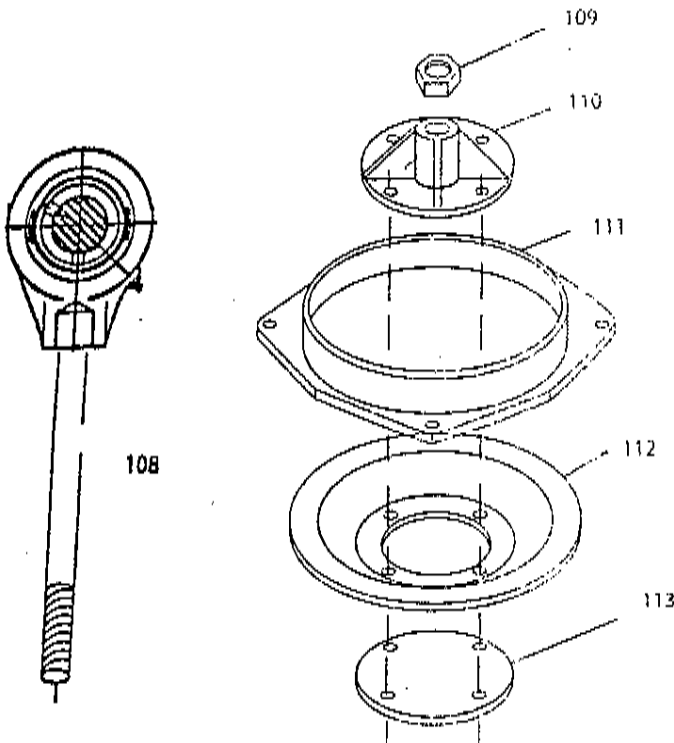
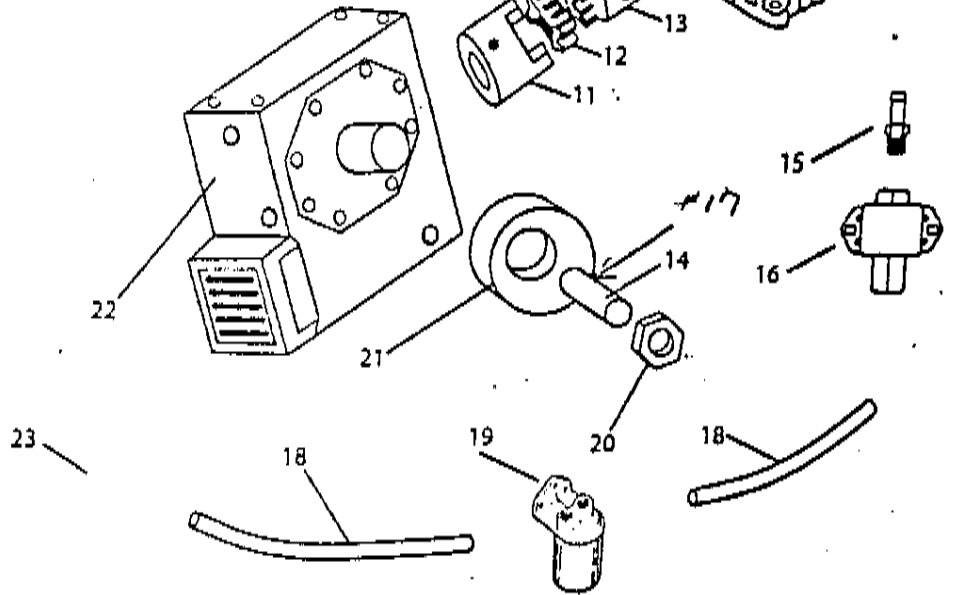
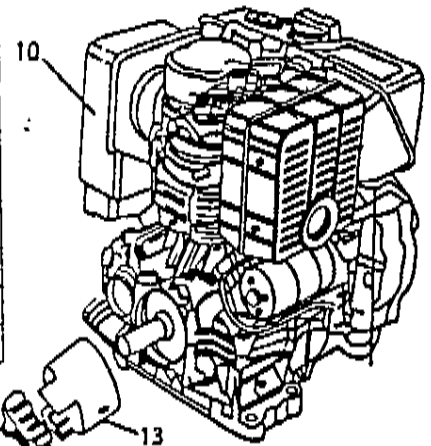
REF#	PART#	DESCRIPTION
104	16104-S	ROD END
105	15105	SPIRAL PIN
107	15107	FLAT WASHER
108	15108	COMPRESSION SPRING
110	16110-S	DIAPHRAGM TOP PLATE
111	16111	CLAMP RING
112	17112-R	DIAPHRAGM
113	16113	DIAPHRAGM BOTTOM PLATE

MODEL # \_\_\_\_\_

SERIAL # \_\_\_\_\_

# POWER TRAIN & FUEL SYSTEM

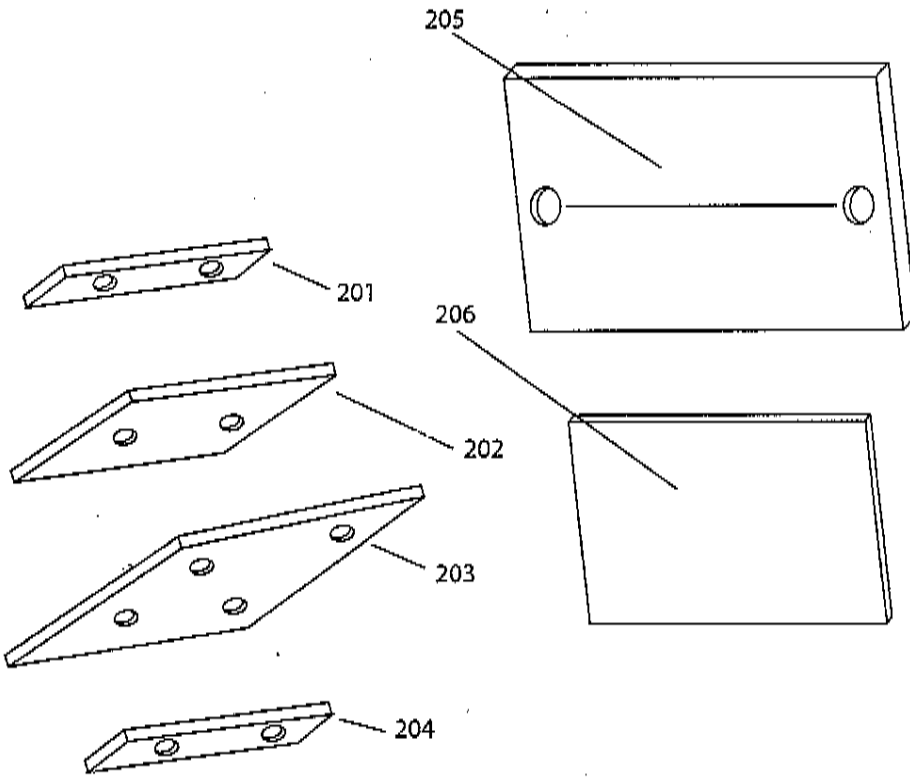
REF#	PARTS	DESCRIPTION	REF#	PARTS	DESCRIPTION
10	15010	ENGINE	17	16103	SET COLLAR
11	16011	COUPLING (GEAR BOX)	18	17018	FUEL LINE
12	15012	SPIDER	19	15019-	FUEL FILTER
13	16013	COUPLING (ENGINE)	20	40017	LOCKNUT
14	16026	ECCENTRIC SPINDLE	21	16021	ECCENTRIC ASSY.
15	15027-G	FUEL COUPLING	22	15022	GEAR BOX
16	15028	ELECTRIC FUEL PUMP	23	16030	FUEL PICK-UP



## SOLID CONNECTING ROD ASSEMBLY

REF	PART#	DESCRIPTION
108	19017	SOLID CONN. ROD
109	15109	JAM NUT
110	16110	DIAPHRAGM TOP PLATE
111	16111-	CLAMP RING
112	17112	DIAPHRAGM
113	16113	DIAPHRAGM BOTTOM PLATE

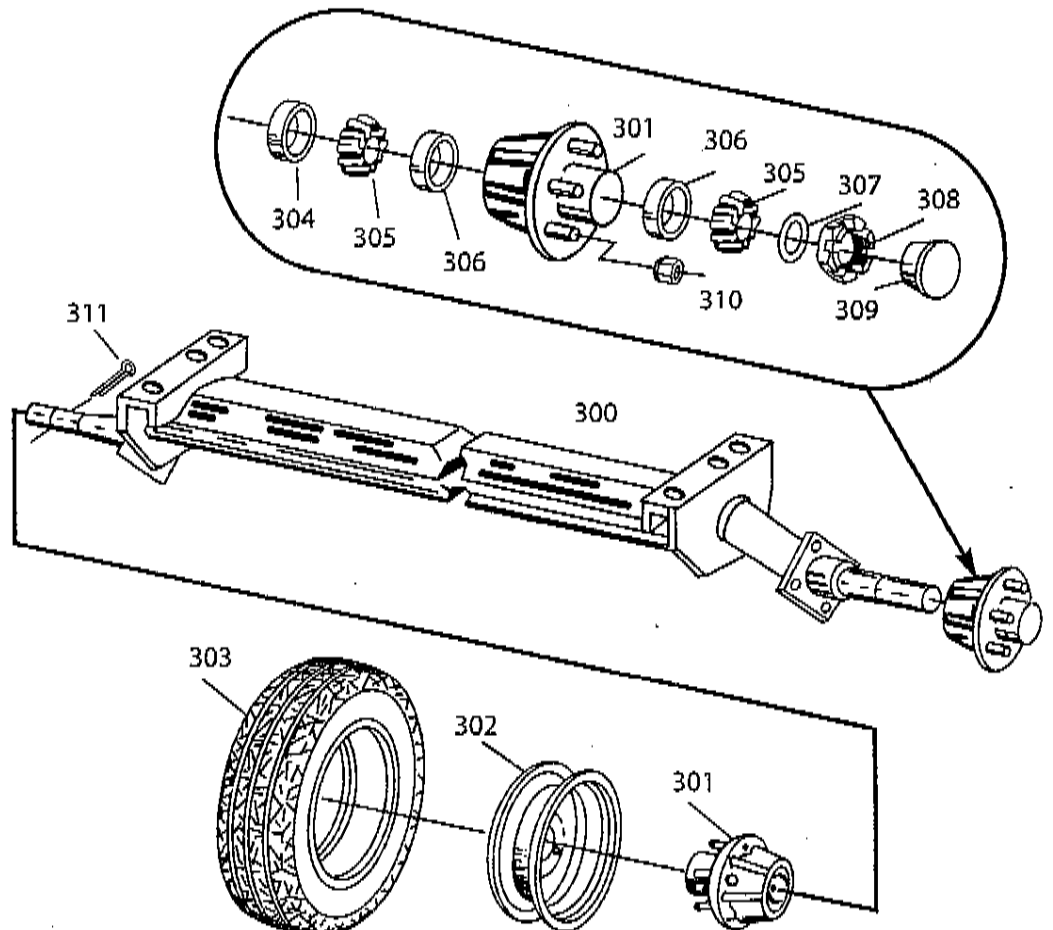
## ACCESS COVER PLATE ASSEMBLY



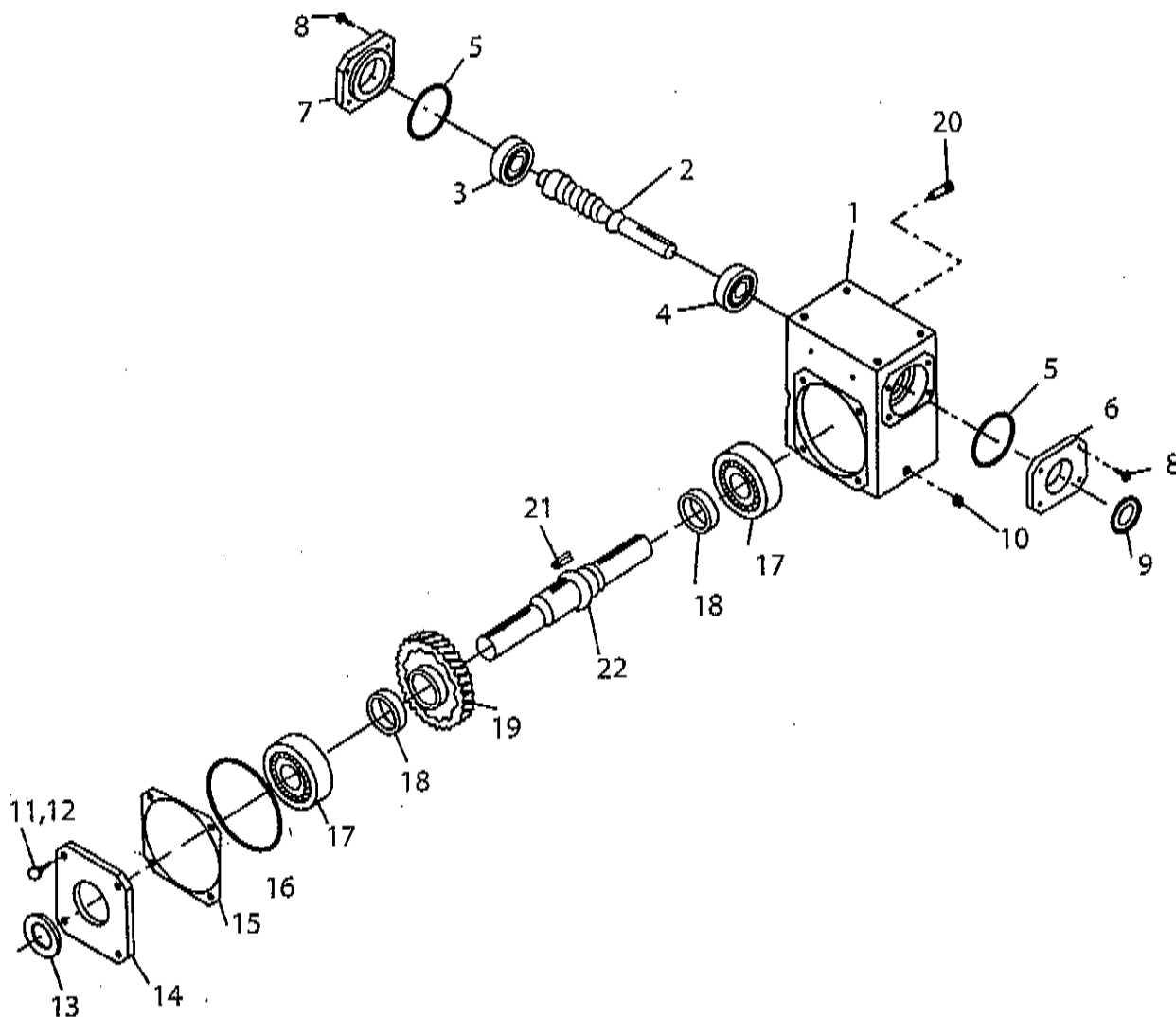
REF#	PART#	DESCRIPTION
200	16200	FLAP VALVE ASSY. COMPLETE
201	16201	CLAMP BAR
202	16202	WEIGHT
203	17203	NEOPREME FLAPPER
204	16204	BINDER
205	16205	ACCESS COVER PLATE
206	17206	ACC. COVER PLATE GASKET

## ACCESS ASSEMBLY

REF#	PART#	DESCRIPTION
300	15300	AXLE ASSY. ASSY W/ HUBS
301	15301	HUB COMP. W/ BEARING
302	15302	13" WHEEL
303	17303	13" TIRE
304	15304	SEAL
305	15305	BEARING CONE
306	15306	BEARING CUP
307	15307	WASHER
308	15308	AXLE NUT
309	15309	DUST COVER
310	15310	LUG NUT
311	15311	COTTER PIN



# GEAR BOX



REF#	PART#	DESCRIPTION	REF#	PART#	DESCRIPTION
1	18001N	HOUSING	12	18012N	BOLT 7/16-14 x 1
2	18002N	INPUT SHAFT	13	18013N	OUTPUT SEAL
3	18003N	BEARING	14	18104N	OUTPUT COVER
4	18004N	BEARING	15	18015N	SHIM
5	18005N	O-RING	16	18016N	O-RING
6	18006N	COVER (INPUT OPEN)	17	18017N	BEARING
7	18007N	COVER (INPUT SOLID)	18	18018N	SPACER
8	18008N	BOLT 7/16-14 x 1.25	19	18019N	WORM GEAR
9	18009N	INPUT SEAL	20	18020	VENT
10	18010	PIPE SEAL	21	18021N	KEY
11	18011N	7/16 LOCK WASHER	22	18022N	OUTPUT SHAFT