



Plate Compactors



One-way and reversible models

Construction Starts Here





One-Way Plate Compactors

Multiquip's Mikasa Brand Plate Compactors are recognized as the industry standard for compacting granular soils and asphalt.

Thousands of satisfied users know that Multiquip has it all—top performance, easy handling, low maintenance and long life.

Our best-selling plate now features an advanced anti-vibration handle design that reduces vibration to the operator by 50% compared to other plate compactors.



MVC88

Easy to use, easy to transport, the MVC-88 is the newest and most technically advanced compactor on the market.

Protective engine guard

Sealed belt cover keeps dirt and rocks out of the belt

Convenient oil drain

for engine oil

Cog-tooth belt drive

for longer life

Self-cleaning plate design minimizes dirt and rock build-up

Engine oil shutdown

Four lifting handles — plate can be lifted from the sides

Powered by a 5.5-HP Honda GX-160 or a 5.7-HP Robin EX-17 gasoline engine

MVC88
3,450 lbs. centrifugal force



WHL88
Transport wheel kit



UPA88A
Urethane plate attachment for use on paving stones and brick pavers

13.7-qt. water tank

- Removable without tools
- Largest in its class
- Self-contained water shut-off valve

(Also available without water tank.)

There's a size and model for every application...

MVC64

- Perfect for small jobs or narrow areas
- Solid, high-strength steel base plate with curved edges provides top performance
- Extra-thick plate in back provides longer wear time
- Economical plate now features anti-vibration handle system
- Powered by Honda GX-120 or RobinEX-13 engine
- Optional water tank for asphalt use



MVC64
2,275 lbs.
centrifugal force

MVC80

- New model with anti-vibration handle
- Economical price tag
- Solid, high-strength steel base plate with curved edges for excellent performance and smooth turns on hot asphalt
- Powered by Robin or Honda engine
- Optional impact-resistant plastic water tank



MVC80
3,080 lbs. centrifugal force

MVC40G



MVC40G
1,573 lbs. centrifugal force

- Tubular steel roll bar cage protects engine components and provides a lifting point
- Powered by Robin engine
- Heavy-duty steel base plate — closed design, ribbed for extra strength
- Only 11.4" wide — ideal for narrow trenches

MVC90

MVC-90 incorporates more standard features than any other compactor in the industry.



MVC90
3,350 lbs. centrifugal force

- Tubular steel roll bar cage protects engine components and provides a lifting point
- Powered by Robin or Honda engines with oil alert and double V-belt drive
- Heavy-duty steel base plate — closed design, ribbed for extra strength
- Durable steel water-distribution system

MVC98D2



MVC98D2
Diesel powered
3,350 lbs. centrifugal force

- Tubular steel roll bar cage protects engine components and provides a lifting point
- Powered by Yanmar diesel engine
- Self-cleaning plate design minimizes dirt and rock build-up
- Durable 13.7 quart water tank (*also available without water tank.*)



Reversible Plate Compactors

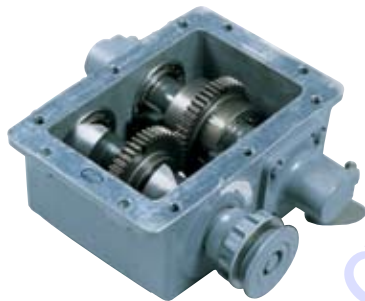
Multiquip's Mikasa Brand Reversible Plate Compactors are the ideal high-production machines for efficient compaction of sand, gravel and cohesive soils.

In addition to some of the standard vibratory plate features, reversible plates have two eccentric weights which increase the compaction force while creating a smooth transition between forward and reverse travel.

MVH200

Choice of Honda gasoline or Yanmar diesel engine

Oil-bath vibrator for low maintenance



Heavy-duty vibrator bearings for long life



Diagonal heavy-duty shock mounts protect engine and operator from excessive vertical and horizontal vibrations



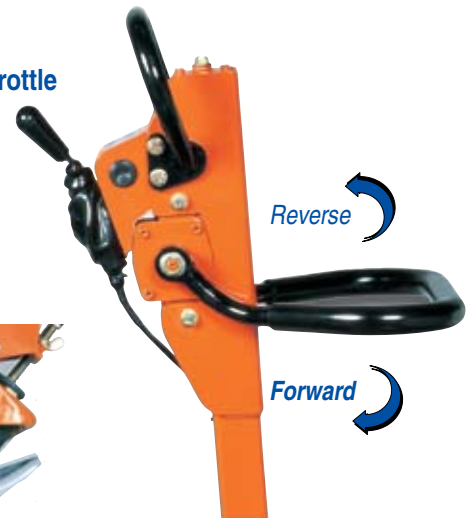
MVH200
7,056 lbs. centrifugal force

High-strength steel base plate with curved edges for top performance



Open base plate design allows rocks and dirt to slide off the plate for easier cleanup

Throttle



Reverse

Forward

Simple, easy-to-use controls allow direction to be changed at full RPM with the flip of a lever

Ultra-simple hydraulic reversing process

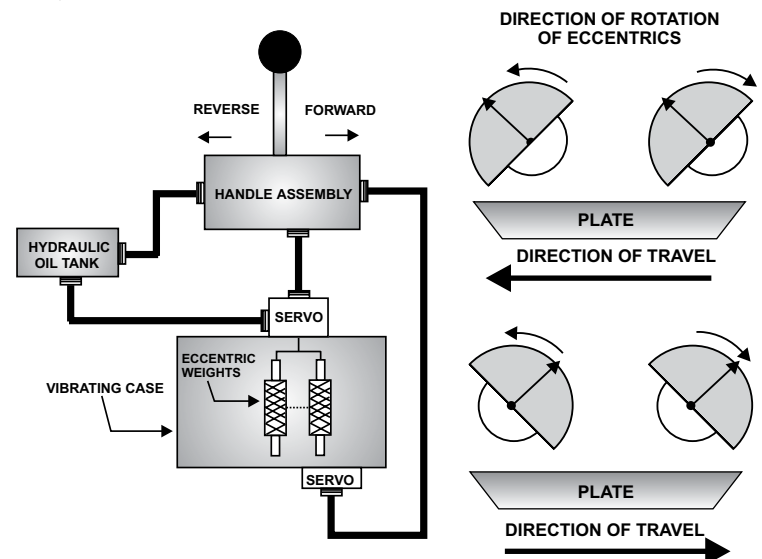


MVHR60/120/150

- Engine protection with top cover keeps dirt off engine
- Highly maneuverable—ideal for tight, confined areas
- Self-cleaning plate
- MVHR60 and 120 available with Honda engine
- MVH150 and 200 available with Honda gasoline or Yanmar diesel engine
- Optimal water tank available for MVH-R60H, 8.8 qts. (8.5 liters)

MVH Hydraulic System

- 1 As you start, pressure is generated with either a master cylinder (through model MVH200) or a rotary pump (MVH306 and larger).
- 2 Travel direction is determined by the relative position of the two eccentric weights to each other.
- 3 Forward and reverse direction is changed by means of switching the pressurized oil between servo pistons located on the eccentric case. The servo pistons change the position of the eccentric weights.
- 4 The hydraulic circuit is designed to return pressurized oil to the tank while the plate is in the neutral travel position. This allows for full compaction force while in neutral.





Reversible Plate Compactors

Multiquip's Brand Reversible Plate Compactors incorporate a unique hydraulic reversing mechanism, eliminating old-fashioned linkage adjustments.

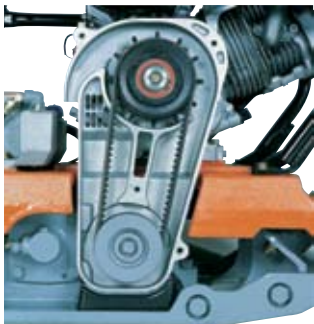
There are no complicated mechanical drive shafts or cables to create problems, thus greatly reducing service time and expense.

MVH306

Available with Honda gasoline or Yanmar diesel engine

Roll cage protects engine and serves as lift bar

MVH306
10,125 lbs. centrifugal force



Fan integrated with clutch pulley — cools air flow for longer belt life

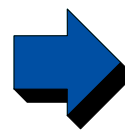
Ribbed steel base plate provides extra strength



Extension plates increase working area by 6" (included with MVH306, 402, 406, 502 and 702 series models)



Adjustable handle height for operator comfort reduces fatigue with the turn of a knob



Handle folds to 90° position for ease of transportation and storage

The high-performance heavyweights



MVH406/402

- 12,400 lbs. compaction force for high productivity
- Extension plates allow for additional utilization in different applications (standard equipment)
- MVH402 is powered by a Honda 13-HP gasoline engine; MVH406 is powered by either a Yanmar 10-HP diesel engine or Hatz/Subaru 9.7-HP diesel engine.
- Honda model is recoil start. Yanmar model is electric start with a recoil backup

MVH406
12,400 lbs. centrifugal force

Multiquip reversible plate compactors are perfect for difficult jobsite conditions — can be backed out of a trench while still compacting



MVH502
14,000 lbs. centrifugal force



Multiquip's MVH306 is ideal for asphalt stamping jobs.

MVH502

- 14,000 lbs. compaction force for high productivity
- Extension plates provide versatility for various applications (standard equipment)
- Powered by dependable Hatz 14.3-hp engine
- Electric start with hand-crank backup

Plate Compactor Specifications

Model	Plate Size WxL in. x in. (cm x cm)	Size With Extensions WxL in. x in. (cm x cm)	Centrifugal Force lbs. (kg)	Exciter Speed RPM	Max. Fwd. Speed ft./min. (m/min)	Engine Model	Fuel Type	HP Rating BHP (kw)	Water Tank Capacity qt. (ltr)	Operating Weight lbs. (kg)
One-Way Plate Compactors										
MVC40G	11.4x16.5 (29x42)	N/A	1,618 (730)	6,200	82 (25)	Robin EH-09	Gas	2.4 (1.8)	N/A	118 (44)
MVC64VH	13.8x21.3 (35x54)	N/A	2,275 (1032)	5,600	82 (25)	Honda GX-120	Gas	4.0 (2.9)	N/A	151 (68)
MVC64VHW	13.8x21.3 (35x54)	N/A	2,275 (1032)	5,600	82 (25)	Honda GX-120	Gas	4.0 (2.9)	8.8 (8.3)	157 (71)
MVC80VE	17.1x22 (45x57)	N/A	3,080 (1400)	5,600	72 (22)	Robin EX-17	Gas	5.7 (4.3)	N/A	174 (79)
MVC80VEW	17.1x22 (45x57)	N/A	3,080 (1400)	5,600	72 (22)	Robin EX-17	Gas	5.7 (4.3)	11.5 (10.9)	179 (80)
MVC80VH	17.1x22 (45x57)	N/A	3,080 (1400)	5,600	72 (22)	Honda GX-160	Gas	5.5 (4.2)	N/A	174 (79)
MVC80VHW	17.1x22 (45x57)	N/A	3,080 (1400)	5,600	72 (22)	Honda GX-160	Gas	5.5 (4.2)	11.5 (10.9)	180 (80)
MVC88VGE	19.7x20.7 (50x53)	N/A	3,450 (1565)	6,000	72 (22)	Robin EX-17	Gas	5.7 (4.3)	N/A	214 (97)
MVC88VGEW	19.7x20.7 (50x53)	N/A	3,450 (1565)	6,000	72 (22)	Robin EX-17	Gas	5.7 (4.3)	11.5 (10.9)	217 (98)
MVC88VGH	19.7x20.7 (50x53)	N/A	3,450 (1565)	6,000	72 (22)	Honda GX-160	Gas	5.5 (4.2)	N/A	212 (96)
MVC88VGHW	19.7x20.7 (50x53)	N/A	3,450 (1565)	6,000	72 (22)	Honda GX-160	Gas	5.5 (4.2)	11.5 (10.9)	218 (99)
MVC90L	19.6x22 (50x56)	N/A	3,350 (1520)	5,800	82 (25)	Robin EH-17	Gas	6.0 (4.4)	4 (3.8)	197 (89)
MVC90H	19.6x22 (50x56)	N/A	3,350 (1520)	5,800	82 (25)	Honda GX-160	Gas	5.5 (4.2)	4 (3.8)	194 (88)
MVC98D2	19.6X22 (50X56)	n/a	3,350 (1520)	6,000	72 (22)	Yanmar L-48	Diesel	4.7 (3.5)	13.7 (13.0)	218 (99)
Reversible Plate Compactors										
MVHR60H	13.8x18.9 (35x48)	N/A	3,372 (1530)	6,000	82 (25)	Honda GX-120	Gas	4 (3.1)	7.5 (6.9)	141 (64)
MVHR60HW	13.8x18.9 (35x48)	N/A	3,372 (1530)	6,000	82 (25)	Honda GX-120	Gas	4 (3.1)	7.3 (8.3)	159 (72)
MVH120GH	15.7x23 (40x58)	N/A	5,200 (2350)	6,000	75 (23)	Honda GX-120	Gas	5.5 (4.2)	N/A	247 (111)
MVH150GH	17x26 (43x70)	N/A	6,620 (3002)	5,600	75 (23)	Honda GX-200	Gas	6.5 (4.9)	N/A	331 (150)
MVH150D	17x26 (43x70)	N/A	6,620 (3002)	5,600	75 (23)	Yanmar L48AE**	Diesel	4.7 (3.5)	N/A	357 (162)
MVH200GH	20x27.6 (51x70)	N/A	7,056 (3200)	5,200	75 (23)	Honda GX-240	Gas	8.0 (5.9)	N/A	423 (192)
MVH200DA2	20x27.6 (51x70)	N/A	7,056 (3200)	5,200	75 (23)	Yanmar L70EE**	Diesel	6.7 (4.9)	N/A	449 (204)
MVH306GH	18x34 (45x86)	24"x34 (61x86)	10,125 (4592)	3,600	75 (23)	Honda GX-270	Gas	9.0 (6.7)	N/A	706 (320)
MVH306DS2	18x34 (45x86)	24"x34 (61x86)	10,125 (4592)	3,600	75 (23)	Yanmar L-70V**	Diesel	7.0 (5.3)	N/A	725 (328)
MVH402GHB	22x35 (55x90)	28"x35 (70x90)	12,400 (5624)	4,200	75 (23)	Honda GX-390	Gas	13.0 (7.4)	N/A	918 (416)
MVH406DSY	22x35 (55x90)	28"x35 (70x90)	11,240 (5100)	4,200	75 (23)	Yanmar L-100V**	Diesel	10.0 (7.4)	N/A	968 (440)
MVH406DSZ	22x35 (55x90)	28"x35 (70x90)	12,400 (5624)	4,200	75 (23)	Hatz/Robin 1B40	Diesel	10 (7.2)	N/A	1,003 (455)
MVH502DSB2	22x35 (55x90)	28"x35 (70x90)	14,000 (6350)	4,200	75 (23)	Hatz 1D81S**	Diesel	14.3 (10.6)	N/A	1,122 (510)

* Extension plates are included with the MVH306, 406, 502 and 702 series, increasing plate width to specified size.

** Oil alarm is not available on diesel-powered models

© COPYRIGHT 2006, MULTIQUIP INC.

TO PURCHASE THIS PRODUCT PLEASE CONTACT US



**Equipment Financing and
Extended Warranties Available**



**Discount-Equipment.com is your online resource for
commercial and industrial quality parts and equipment sales.**

561-964-4949

visit us on line @ www.discount-equipment.com

Select an option below to find your Equipment

Search by Manufacturer

Search by Product Type

Request a Quote

We sell worldwide for the brands: Genie, Terex, JLG, MultiQuip, Mikasa, Essick, Whiteman, Mayco, Toro Stone, Diamond Products, Generac Magnum, Airman, Haulotte, Barreto, Power Blanket, Nifty Lift, Atlas Copco, Chicago Pneumatic, Allmand, Miller Curber, Skyjack, Lull, Skytrak, Tsurumi, Husquvarna Target, Stow, Wacker, Sakai, Mi-T-M, Sullair, Basic, Dynapac, MBW, Weber, Bartell, Bennar Newman, Haulotte, Ditch Runner, Menegotti, Morrison, Contec, Buddy, Crown, Edco, Wyco, Bomag, Laymor, EZ Trench, Bil-Jax, F.S. Curtis, Gehl Pavers, Heli, Honda, ICS/PowerGrit, IHI, Partner, Imer, Clipper, MMD, Koshin, Rice, CH&E, General Equipment, Amida, Coleman, NAC, Gradall, Square Shooter, Kent, Stanley, Tamco, Toku, Hatz, Kohler, Robin, Wisconsin, Northrock, Oztec, Toker TK, Rol-Air, APT, Wylie, Ingersoll Rand / Doosan, Innovatech, Con X, Ammann, Mecalac, Makinex, Smith Surface Prep, Small Line, Wanco, Yanmar