

SALES GUIDE

RT SERIES TRACK LOADERS

1750RT NXT2 | 2100RT NXT2 | 2500RT



MUSTANG

SALES GUIDE

CONTENTS

STRATEGY

2

OVERVIEW

3

KEY SALES ARGUMENTS..... 3

SPECIFICATIONS..... 4

FEATURES

5

OPERATORS CAB 5

ENGINE..... 7

HYDRAULICS 8

TRACKS..... 9

SERVICEABILITY 10

ATTACHMENTS

11



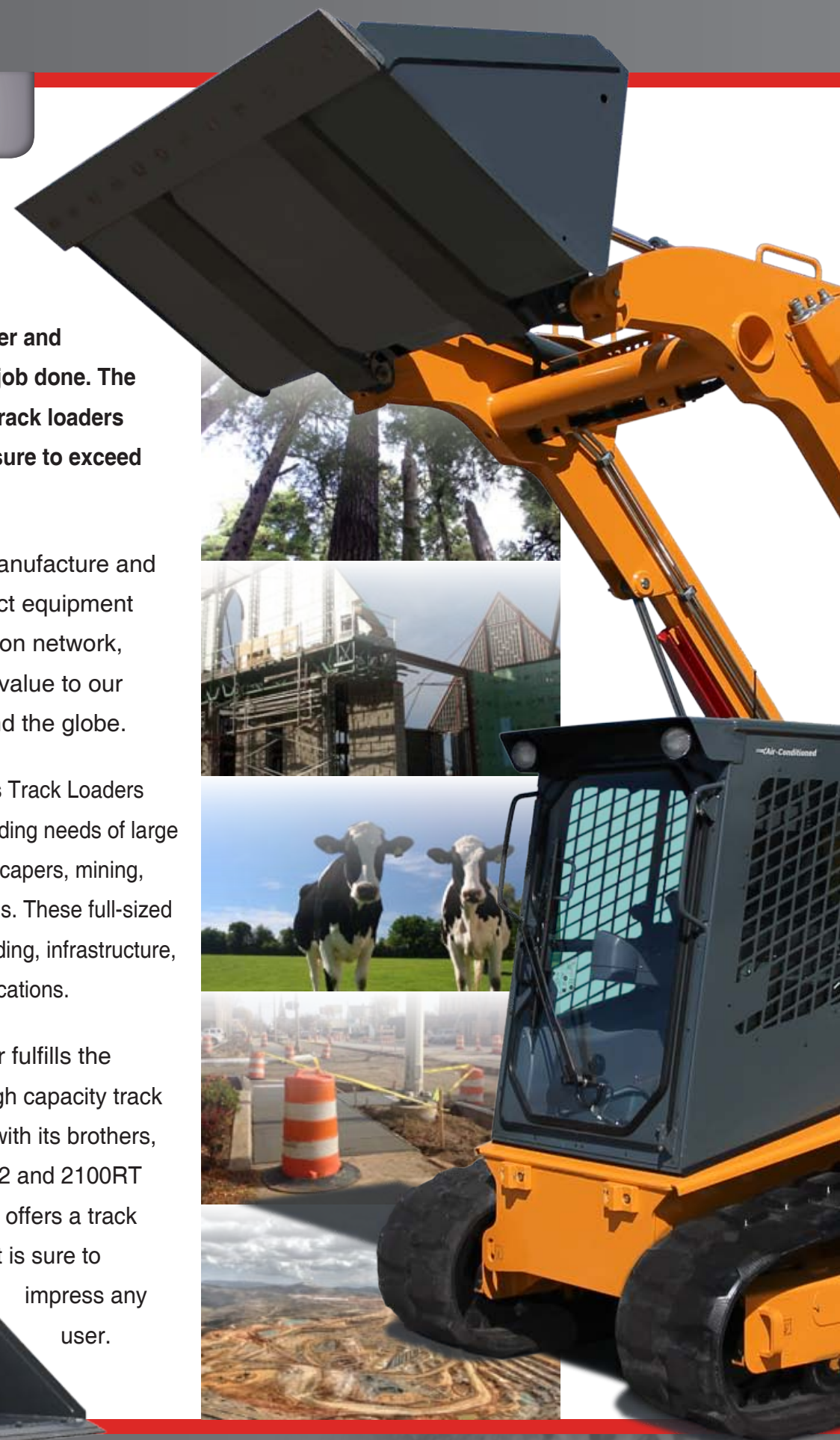
STRATEGY

Since breaking into the track loader market in 2001, Mustang has ensured that its track loaders provide the power and features necessary to get the job done. The next generation of RT Series track loaders offer new, intuitive upgrades sure to exceed expectations.

The Mustang mission is to manufacture and distribute high-quality compact equipment through a dedicated distribution network, thereby delivering increased value to our dealers and customers around the globe.

The versatile Mustang RT Series Track Loaders are designed to meet the demanding needs of large contractors, municipalities, landscapers, mining, dairies and agricultural operations. These full-sized loaders also excel in road building, infrastructure, industrial and forestry applications.

The 2500RT in particular fulfills the market's demand for a high capacity track loader. Combined with its brothers, the 1750RT NXT2 and 2100RT NXT2, Mustang offers a track loader line that is sure to impress any user.



SALES GUIDE

OVERVIEW

key sales arguments

ALL-NEW!

- 1750RT NXT2 / 2100RT NXT2 NOW TIER IV Updated models feature Yanmar Tier IV high-efficiency engines with torque ratings up to 217 ft.-lbs. (294 Nm) at 1625 rpm on the 2100RT NXT2.



Yanmar 4TNV98CT Tier IV

- DEUTZ TIER IV ENGINE ON 2500RT Deutz Tier IV 74.3 hp (55.4 kW) engine provides the power for exceptional torque and tractive effort.



Deutz TD 3.6 Tier IV

ALL-NEW!

- STRAIGHT TRACKING can be programmed with a switch, providing for simple operator adjustments when needed.

Now available on the 1750RT NXT2 and 2100RT NXT2

INDUSTRY EXCLUSIVE!

- IDEALTRAX™ AUTO TRACK TENSIONING SYSTEM automatically tensions the tracks when the engine is started and during operation. Tension is released when the engine is shut off.

ALL-NEW!

- STEEL HYDRAULIC LINES New hydraulic plumbing provides a cleaner design and eliminates hose tears or wearing.

Now available on the 1750RT NXT2 and 2100RT NXT2

- ANTISTALL TECHNOLOGY monitors and adjusts the hydrostatic drive pump to produce the ideal tractive effort.
- DRIVE SENSITIVITY ADJUSTMENT offers five settings which adjust drive operation characteristics to suit user preference and application requirements.

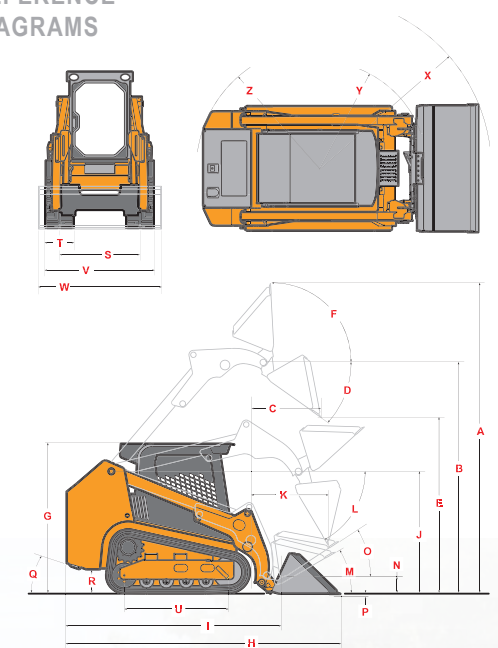
ALL-NEW!

- LAP BAR / ARM RESTS Front of armrest has been elevated +/- 8° to provide two more inches of clearance for the operator's legs and improves operating position.



SPECIFICATIONS		1750RT NXT2	2100RT NXT2	2500RT
DIMENSIONS	A. Overall Operating Height – Fully Raised (mm)	168" (4267)	172" (4369)	175.2" (4450)
	B. Height to Hinge Pin – Fully Raised (mm)	127.5" (3239)	128" (3251)	128" (3251)
	C. Reach – Fully Raised (mm)	34.5" (876)	37.0" (940)	39.2" (996)
	D. Dump Angle – Fully Raised	40.2°	39°	41°
	E. Dump Height – Fully Raised (mm)	98" (2489)	95.7" (2431)	91.7" (2329)
	F. Maximum Rollback Angle – Fully Raised	102.5°	102.5°	102.5°
	G. Overall Height at ROPS (mm)	82.8" (2103)	83.1" (2111)	83.1" (2111)
	H. Overall Length w/ Bucket – Std. c-wt. (mm)	144.0" (3658)	152.3" (3868)	166.0" (4216)
	I. Overall Length w/o Bucket – Std. c-wt. (mm)	110.8" (2814)	114.5" (2908)	125.0" (3175)
	J. Specified Height (mm)	67.5" (1715)	67.7" (1720)	67.7" (1720)
	K. Reach at Specified Height (mm)	31.1" (790)	31.8" (808)	32.0" (813)
	L. Dump Angle at Specified Height	75°	75°	75°
	M. Maximum Rollback Angle at Ground	30°	30°	30°
	N. Carry Position (mm)	7" (179)	7" (179)	7" (179)
	O. Maximum Rollback Angle at Carry Position	33°	33°	33°
	P. Digging Position – Below Ground (mm)	-0.3" (7.6)	-0.2" (5.1)	-0.2" (5.1)
	Q. Angle of Departure with Std. c-wt.	30.4°	29.2°	25°
	R. Ground Clearance (mm)	13.3" (343)	13" (330)	13" (330)
	S. Track Gauge (mm)	51.7" (1313)	51.7" (1313)	51.7" (1313)
	T. Track Shoe Width (mm)	12.6" (320)	17.7" (450)	17.7" (450)
	U. Crawler Base (mm)	54.8" (1392)	58.4" (1483)	61.5" (1562)
	V. Overall Width – Less Bucket (mm)	64.4" (1636)	69.5" (1765)	69.5" (1765)
W. Bucket Width (mm)	65.9" (1674)	73.9" (1877)	83.9" (2131)	
X. Clearance Radius – Front With Bucket (mm)	91.4" (2322)	98.1" (2492)	104.7" (2659)	
Z. Clearance Radius – Rear w/ Std. c-wt. (mm)	62.1" (1577)	64.6" (1641)	70.7" (1796)	
Maximum Rollback at Specified Height	66.8°	66.8°	66.8°	
Angle of Approach	90°	90°	90°	
Grouser Height (mm)	1" (25)	1" (25)	1" (25)	
CAPACITY	Operating Capacity at 35% Tipping Load (kg)	1750 lbs. (794)	2100 lbs. (953)	2500 lbs. (1134)
	Operating Capacity at 50% Tipping Load (kg)	2500 lbs. (1134)	3000 lbs. (1361)	3571 lbs. (1620)
	Tipping Load (kg)	5000 lbs. (2268)	6000 lbs. (2722)	7143 lbs. (3240)
	Operating Weight (kg)	8605 lbs. (3903)	9890 lbs. (4486)	11,595 lbs. (5259)
ENGINE	Make/Model	Yanmar / 4TNV98CT Tier 4	Yanmar / 4TNV98CT Tier 4	Deutz / TD 3.6 Tier 4
	Type	4-Stroke Naturally Aspirated	4-Stroke Turbo	4-Stroke Turbo
	Displacement (L) / cylinders	203 cu.in. (3.3) / 4	203 cu.in. (3.3) / 4	221 cu.in. (3.6) / 4
	Gross Power (kW) @ rpm	69.9 hp (52.1) @ 2500	72 hp (53.7) @ 2500	74.3 hp (55.4) @ 2300
	Net Power (kW) @ rpm	68.4 hp (51) @ 2500	70.7 hp (52.7) @ 2500	N/A
	Peak Torque (Nm) @ rpm	179 ft.-lbs. (242.7) @ 1600	217 ft.-lbs. (294) @ 1625	243 ft.-lbs. (330) @ 1500
	Oil Pump Capacity (L)	11 qts. (10.4)	11 qts. (10.4)	9 qts. (8.5)
TRACK DRIVES	Alternator Voltage / Amperage	14V / 95A	14V / 95A	14V / 95A
	Drawbar Pull / Tractive Effort (kg)	11,840 lbs. (5371)	12,359 lbs. (5606)	14,317 lbs. (6494)
	Track Type / Track Rollers / Roller Type	Rubber / 4 / Steel	Rubber / 5 / Steel	Rubber / 5 / Steel
	Track Width (mm)	12.6" (320)	17.7" (450)	17.7" (450)
FORCES	Ground Pressure (bar)	6.2 psi (0.43)	4.7 psi (0.32)	5.3 psi (0.37)
	Bucket Breakout – Tilt Cylinder (kg)	5189 lbs. (2354)	5492 lbs. (2491)	6894 lbs. (3127)
	Bucket Breakout – Lift Cylinder (kg)	4840 lbs. (2195)	5398 lbs. (2449)	6786 lbs. (3078)
	Ground Speed – Single Speed (km/hr)	5.1 mph (8.2)	5.4 mph (8.7)	5.4 mph (8.7)
VOLUME	Ground Speed – Two Speed (km/hr)	7.5 mph (12.1)	7.9 mph (12.7)	7.9 mph (12.7)
	Fuel Tank (L)	24 gal. (91)	24 gal. (91)	24 gal. (91)
	Hydraulic Reservoir Tank (L)	11.0 gal. (41.6)	13.8 gal. (52.2)	13.8 gal. (52.2)
HYDRAULICS	Coolant Capacity (L)	3.5 gal. (13.3)	3.8 gal. (14.4)	5.1 gal. (19.3)
	Auxiliary Hydraulic Flow – Rated Speed (L/min)	18.5 gpm (70.0)	21.8 gpm (82.5)	24.9 gpm (94.3)
	High-Flow Hydraulic Flow – Rated Speed (L/min)	34.0 gpm (128.8)	35.9 gpm (135.8)	37.4 gpm (141.6)
	Transmission Pump Type	Axial Piston	Axial Piston	Axial Piston
	Motor Type	Axial Piston with Planetary Gear Box Reduction		
Battery Volts	12V	12V	12V	
Cold Cranking Amps at Temperature	850 CCA @ 0°F (-18°C)	850 CCA @ 0°F (-18°C)	950 CCA @ 0°F (-18°C)	

REFERENCE DIAGRAMS



- OPTIMIZED RADIAL BOOM offers increased strength and up to 128" (3251 mm) of lift height - higher than any competitor in their respective weight class

FEATURES

operator's cab



2" (51 mm) added clearance

ALL-NEW!

RESTRAINT BARS AND ARMRESTS
Front of armrests has been elevated +/- 8° to provide extra clearance for the operator's legs.

PREMIUM SEAT
Standard mechanical suspension seat or an optional air-ride seat for operator comfort.

HYDRALOC™ SYSTEM
Brakes are applied and hydraulics are disabled whenever the operator raises the restraint bar, leaves the operator's seat or switches off the ignition.

ALL-NEW!

DURABLE DOOR LATCH
New, improved double-claw door latch includes large striker for increased strength and integrity.

CUSTOMIZE
Fully adjustable joystick control towers and suspension seat options provide extreme comfort

CREATURE COMFORTS
Dome light, cup holder, two 12-volt outlets, storage tray and multiple adjustable air louvers.

INSTRUMENTATION
All instrumentation is conveniently located on the armrests for easy access.



INTEGRATED LCD DISPLAY
Easy to use, multi-function display incorporates all warning/operation lights and machine configuration screens. Single button allows for simple scrolling and selection of various display functions.

ROPS/FOPS LEVEL II
standard equipment.

PRESSURIZED CAB
Optional pressurized sealed cab enclosure with sound reduction material and rear-mounted air filter provides a cleaner and quieter operating environment.

	1750RT NXT2	2100RT NXT2	2500RT
STRUCTURE			
Tilt-out Foot Pod	○	○	○
Back-up Alarm	○	○	○
Combination Radiator & Hydraulic Oil Cooler	○	○	○
ROPS/FOPS Level II Overhead Guard	○	○	○
Anti-Vandalism Lock Provisions	○	○	○
Mechanical Lift Cylinder Lock	○	○	○
OPERATOR'S STATION			
Pressurized Cab Enclosure with A/C	●	●	●
Multi-Function Function Display Screen	○	○	○
Adjustable Drive Sensitivity	○	○	○
Electro-Hydraulic Joystick Controls	○	○	○
Selectable Control Pattern Configuration	●	●	●
Variable Speed Control, Selectable On & Off	●	●	●
Foot Throttle	○	○	○
Mechanical Suspension Seat	○	○	○
Air-Ride Seat	●	●	●

○ STANDARD ● OPTIONAL

ADJUSTABLE DRIVE SENSITIVITY
offers five presets that change joystick sensitivity, position reaction, engine response, anti-stall and pump swash plate position to operator preference.

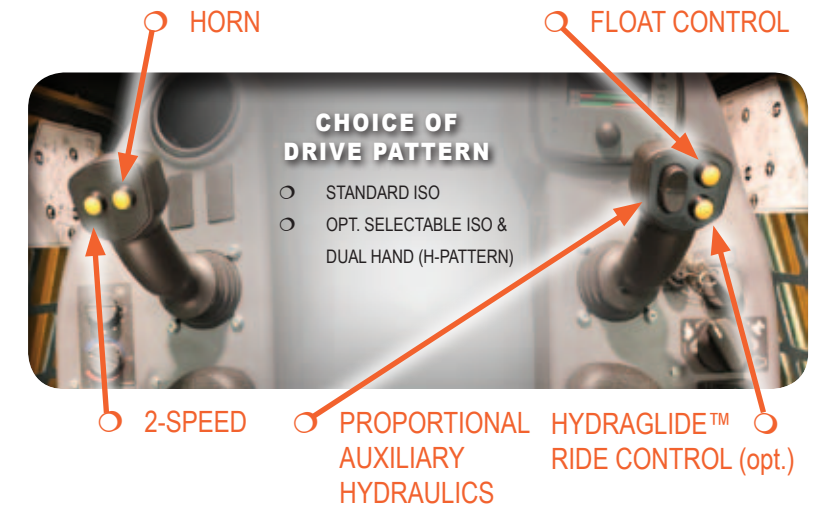
ELECTRO-HYDRAULIC JOYSTICK CONTROLS
Unaffected during cold weather operation, these controls provide the ultimate in low lever effort and customized controllability.

2100RT NXT2 pictured

EXCELLENT VISIBILITY
A cab-forward design enhances the view to the bucket cutting edge from the operator's seat.

Extra-large side screens combined with a low-profile lift arm design provide a wide field-of-view to the side work areas.

Large top and front windows provide a clear view of the attachment in higher lift positions.



CHOICE OF DRIVE PATTERN

- STANDARD ISO
- OPT. SELECTABLE ISO & DUAL HAND (H-PATTERN)

○ 2-SPEED ○ PROPORTIONAL AUXILIARY HYDRAULICS ○ HYDRAGLIDE™ RIDE CONTROL (opt.)

SALES GUIDE

FEATURES

engine

1750RT_{NXT2}

ALL-NEW!

- **179 ft.-lbs.** (242.7 Nm) peak torque
- **69.9 hp** (52.1 kW) 4-stroke naturally aspirated diesel engine

- **0°F** (-18°C) COLD START
Automatic glow plug heating system provides superior cold-weather starting.
- AFTER TREATMENT
meets all Tier IV requirements through proven technology. Refer to the Operator's Manual for full details.

ALL-NEW!

- **NEW ECU CONTROL**
ECU control is compatible with high-pressure injection system and automatically controls engine operation.

2100RT_{NXT2}

YANMAR **TIER IV**

1750RT NXT2 - 4TNV98C
2100RT NXT2 - 4TNV98CT

- **217 ft.-lbs.** (294 Nm) peak torque
- **72 hp** (53.7 kW) 4-stroke turbo-diesel engine



	1750RT NXT2	2100RT NXT2	2500RT
ENGINE			
Engine Alert System with Error Display	○	○	○
Engine Automatic Shutdown System	○	○	○
Grid/Manifold Heater Starter Assist	○	○	○
Dual-Element Air Cleaner with Indicator	○	○	○

○ STANDARD ● OPTIONAL

2500RT

- **74.2 hp** (55.4 kW) high-powered turbo-diesel engine efficiently transfers power to productive performance with impressive breakout forces.
- **243 ft.-lbs.** (330 Nm) peak torque
- **0°F** (-18°C) COLD START
Automatic glow module engine intake heating system provides superior cold-weather starting performance.



DEUTZ
TIER IV
TD 3.6



FEATURES

hydraulics

- UP TO **3000 psi** (207 bar) - 2500RT
High system pressure delivers more hydraulic muscle to power demanding attachments and deliver superior lifting and breakout forces.
- 1750RT NXT2 = **34 gpm** (128.8 L.min)
2100RT NXT2 = **35.9 gpm** (135.8 L.min)
2500RT = **37.4 gpm** (141.6 L/min)
High-flow option is designed to handle virtually every high-flow/high-performance attachment.

- **PRECISION CONTROL**
Standard proportional auxiliary hydraulic control gives the operator the ability to adjust attachment speeds with infinitely adjustable flow control.

Standard auxiliary detent (at full flow) allows the operator to set the hydraulic flow for continuous operation.



	1750RT NXT2	2100RT NXT2	2500RT
Auxiliary Hydraulics	○	○	○
High-Flow Auxiliary Hydraulics	●	●	●
Hydraglide™ Ride Control System	●	●	●
Hydraloc™ System	○	○	○

○ STANDARD ● OPTIONAL

ALL-NEW!

- **STEEL HYDRAULIC LINES**
Replacing rubber hoses, these new hydraulic lines installed within the main unit provide a cleaner design and enhanced reliability.

ALL-NEW!

- **REPOSITIONED AUXILIARY RELIEF VALVES**
The main auxiliary relief valves are now positioned for easy access.

FEATURES

tracks

IDEALTRAX™ INDUSTRY EXCLUSIVE! AUTOMATIC TRACK TENSIONING SYSTEM

- **ELIMINATES** the need for **MANUALLY TENSIONING** the tracks on the loader before operation, saving valuable time on the jobsite.
- **INCREASES THE LIFE OF THE TRACKS**, (up to 15%* in tested conditions) sprockets and bearings by ensuring the proper tension immediately upon start-up and during use, and tension release when the machine is shut down.
- **TRACK CHANGES** in the field are facilitated with the simple flip of a switch.

*Track life improvement varies greatly depending on conditions, application and upkeep; results may vary.

- See **IDEALTRAX™** in action by scanning this QR code.



ALL-NEW!

- **STRAIGHT TRACKING** feature allows operator to make adjustments to the tracking to keep the machine on a straight path at all times. Operator can control straight tracking from the display, eliminating unnecessary servicing. *Now available on the 1750RT NXT2 and 2100RT NXT2*



ENGINE NOT RUNNING



ENGINE RUNNING

	1750RT NXT2	2100RT NXT2	2500RT
PERFORMANCE			
Automatic Track Tensioning System	○	○	○
Straight Tracking	○	○	○
Self-Leveling Hydraulic Lift Action	○	○	○
Selectable Self-Leveling Lift Action	●	●	●
Two-speed Hydrostatic Drive System	○	○	○
UNDERCARRIAGE			
Elevated Planetary Final Drives	○	○	○
Maintenance Free Rollers Each Side	3	4	4
Single Flange Front/Dual Flange Rear Idlers	○	○	○
Rubber Track Undercarriage System	○	○	○
Servo-Controlled Hydrostatic Drive	○	○	○
Dedicated Undercarriage	○	○	○

○ STANDARD ● OPTIONAL

FEATURES

serviceability

ALL-NEW!

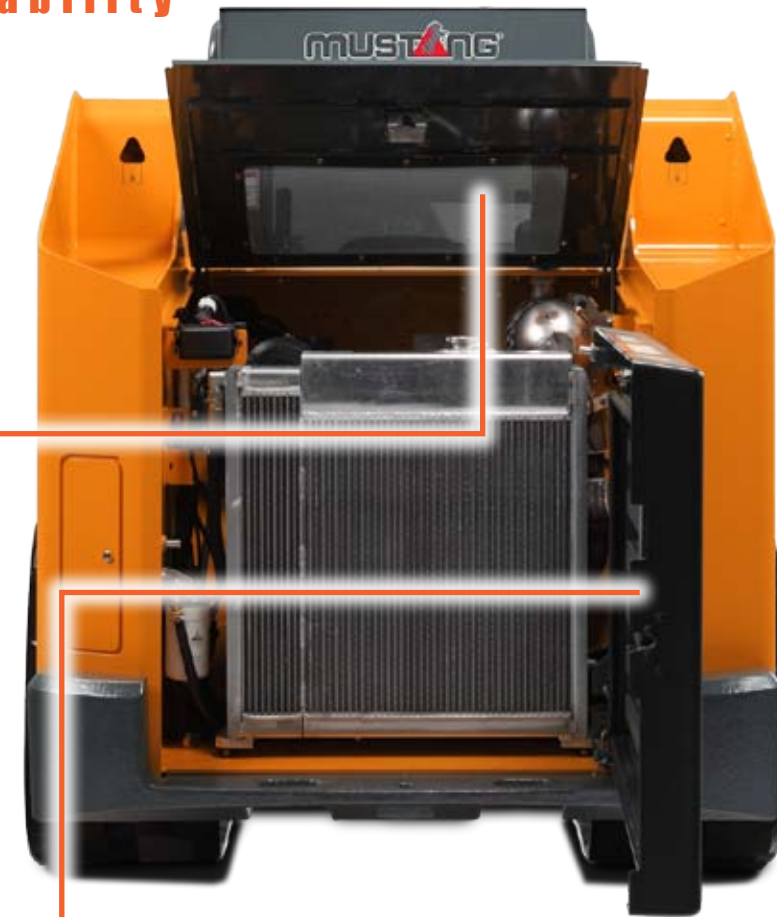
- **SEALED FUSE BOXES**
Consolidated to one location in the rear of the machine for easy access.

ALL-NEW!

- **ENGINE OIL FILTER & DRAIN ACCESS IMPROVED**
Now accessible through a new under-chassis access plate with two bolts.

ALL-NEW!

- **LARGE, LOCKABLE ENGINE AND TOW COVER** is hinged and positioned by gas-springs to assist lifting and holding in place, and allows for easy return to closed/operating position.



- **SWING OUT REAR DOOR** easily opens on hinges on right side, allowing full access to filters and fluid reservoirs, for servicing and maintenance.



- **TILT-OUT FOOT POD** allows for best-in-class foot well cleanout and provides perfect access to the fuel tank and other components under the cab.

- **ENTIRE ROPS/FOPS ASSEMBLY** tilts rearward with a gas-spring assist for easy internal access to the pumps, hydraulic valve bank and drive motors.

ALL-NEW!

- **CAB SUPPORT LOCK** Provides for auto-locking the ROPS in the full up position, no need for a second person or pin insertion.

ALL-NEW!

- **DIN24 DRIVE HOSES** Inverted flare style hoses are shorter and feature a high sealing, leak-free design.

ATTACHMENTS



ALL-TACH®

All models feature the easy-to-use All-Tach® (universal-style) attachment mounting system compatible with most allied attachments.

- SINGLE LEVER DESIGN for simplicity and strength.
- HEAVY FIT UP PLATE design for increased rigidity over tube style.



POWER-A-TACH®

Electric Power-A-Tach® all-weather system option allows users to quickly install and remove attachments. An operator leaves the seat only to connect auxiliary hydraulics. This system is compatible with most allied attachments.

EDGE®

With a wide variety of EDGE® attachments available, Mustang RT Series Track Loaders are easily transformed to meet your customers' needs.

PALLET FORKS



ROCK BUCKET



TRENCHER



POWER RAKE



SNOW REMOVAL



AUGER



STUMP GRINDER



ROTOTILLER



MOWER



GRAPPLE BUCKET



GRADER BLADE



ANGLE BROOM



ALL-NEW!

- ELECTRONIC ATTACHMENT CONTROL OPTION
14 PIN CONNECTOR

On joystick controls, this factory-installed add-on allows for control of all attachments.

