



MULTIQUIP

Vibratory Rollers



Walk-behind and ride-on models

Construction Starts Here





Ride-On Tandem Drum Rollers

**MultiQuip's answer for asphalt and soil applications
— parking lots, driveways, road repair and patchwork.**

Tapered drum edges reduce asphalt tracks.

Conveniently located water valves enable accurate adjustment of each drum.

Extra heavy-duty tie-down hooks allow proper securing of machine during transport.

ROPS and seatbelts standard.

Heavy-duty drum scrapers — two each front and rear—are fully adjustable for optimum drum cleaning ability.



Oversized 52-gal. poly water tank—at least 15% larger than competitive models.

- Longer intervals between fill-ups.
- Equipped with water level sight gauge.

AR13HAR

Shown with 16.6-HP Honda gas engine* (manual and recoil start); 23.6 HP Vanguard diesel optional*

Front drum vibration with static rear drum provides a smooth and even surface. Rear drum can be filled with water for additional ballast.

AR13 Series Versatile Workhorses!

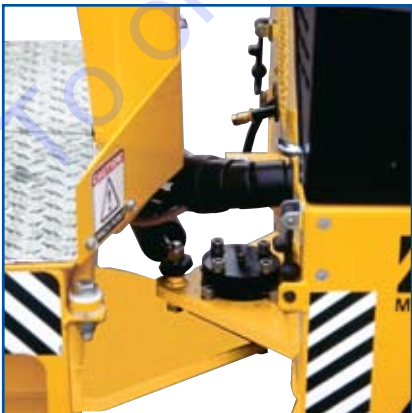
Designed specifically for compacting asphalt and sub-layer granular and mixed soils, the AR13 series rollers are lightweight, but heavy-duty machines.

- Hydrostatic drive with infinitely variable speed control for both forward and reverse travel. Allows smooth starts and stops, as well as even operation, to help eliminate asphalt marring.
- Maintenance-free vibratory assembly reduces service time.
- Five-year warranty on drive motors.

**3,100 lbs centrifugal force
4,000 vibrations per minute**



AR13DR:
23.6 HP Vanguard diesel



Articulated movement with power-assist provides accurate, positive steering control and increases maneuverability in close job site conditions. 11° oscillation for uneven surfaces. **Three-year warranty on articulation.**



9.5-gal. poly fuel tank with fuel level indicator cap—located under the seat for easy access. 6.5 hours fuel supply.

Keeps on working when others have quit!



1¼" clearance on operator's right side allows close operation near walls and obstructions.

19" high curb clearance on operator's right side insures flush compaction to the curb.



Operator controls grouped together. Forward/reverse, vibrator switch, engine throttle and sprinkler controls are conveniently placed together at the right side of the driver's seat for ease of operation and to allow accurate flow adjustments to each drum. The vibrator switch is located in the top of the travel lever.



Easy boarding — convenient steps give operator safe foothold when entering or exiting.



Hydraulic drive motors and hydrostatic drive lines on the left side are totally enclosed to reduce risk of damage.



ROPS (Roll Over Protection Structure) increases operator safety. Standard with all AR13 series machines.



Engine panel access — simple entry to service engine components.

Metal engine cover with punch-pressed ventilation openings insures proper engine cooling.



Unobstructed driver visibility — open, uncluttered operator's platform allows clear view all around with plenty of foot and leg room.



Walk-Behind Tandem Rollers

Advanced engineering and design is the hallmark of these rugged and dependable vibratory rollers.

MRH800

Streamlined design with narrower (27.2") overall width allows access to tighter areas.

Permanently lubricated bearings and external vibration means less servicing, more dependability.

5,300 lbs centrifugal force
3,300 vibrations per minute



Deadman safety controls

Convenient tie-downs and lifting eye

Front and rear drum scrapers

All hydrostatic drive—no drive chain

MRH800GS:

Shown with 11-HP Honda gasoline engine*

(10-HP Yanmar diesel optional*)

10.6-gal. non-corrosive water tank

Front bumper and working light standard



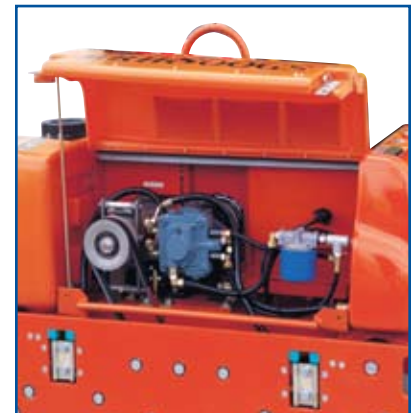
Dependable Honda gasoline engine comes standard with electric and recoil start.



Drum sprinkler system controls are located near the operator. Drum chocks are standard to help secure roller when parked on a slope.



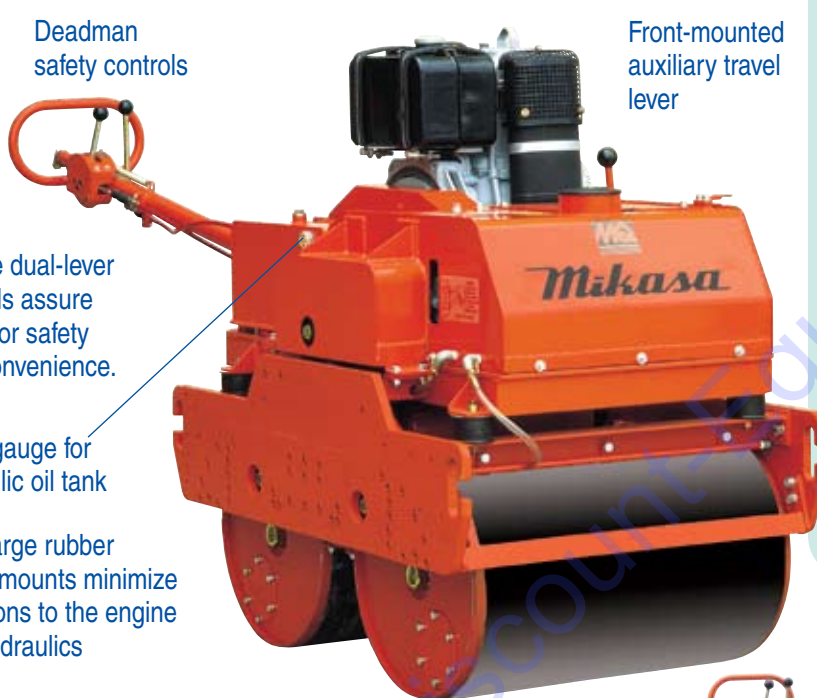
Narrow profile, less than one inch wall clearance. No exposed hydraulic hoses.



Easy access to hydraulic components and hydraulic filter.

Built for Granular Soils and Asphalt

Multiquip meets contractors' needs by providing the right roller for virtually any job application.



Deadman safety controls

Front-mounted auxiliary travel lever

Simple dual-lever controls assure operator safety and convenience.

Sight gauge for hydraulic oil tank

Four large rubber shock mounts minimize vibrations to the engine and hydraulics

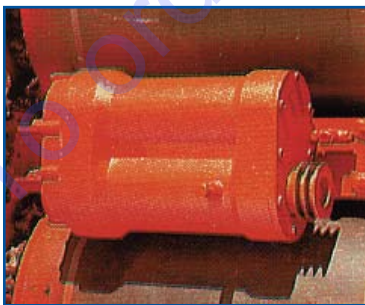
MDR9D:
Shown with 12-HP Hatz diesel engine*
(10-HP Yanmar diesel optional)

Convenient tie-downs front and rear

MDR9
High performance and high production are the proven traits of this heavy-duty champion.
With 28" drums and 32" overall width, virtually any asphalt or mixed granular soil compaction job is quickly cut down to size.
9,600 lbs centrifugal force
3,000 vibrations per minute

MDR9GH:
9.5-HP Honda gasoline engine.

Features common to both MRH800 and MDR9 series rollers



External vibration — vibrator assembly is located between drums and is easily accessible for maintenance.



Hydrostatic drive assures easy handling. Operator has full control with infinitely variable forward and reverse speeds.

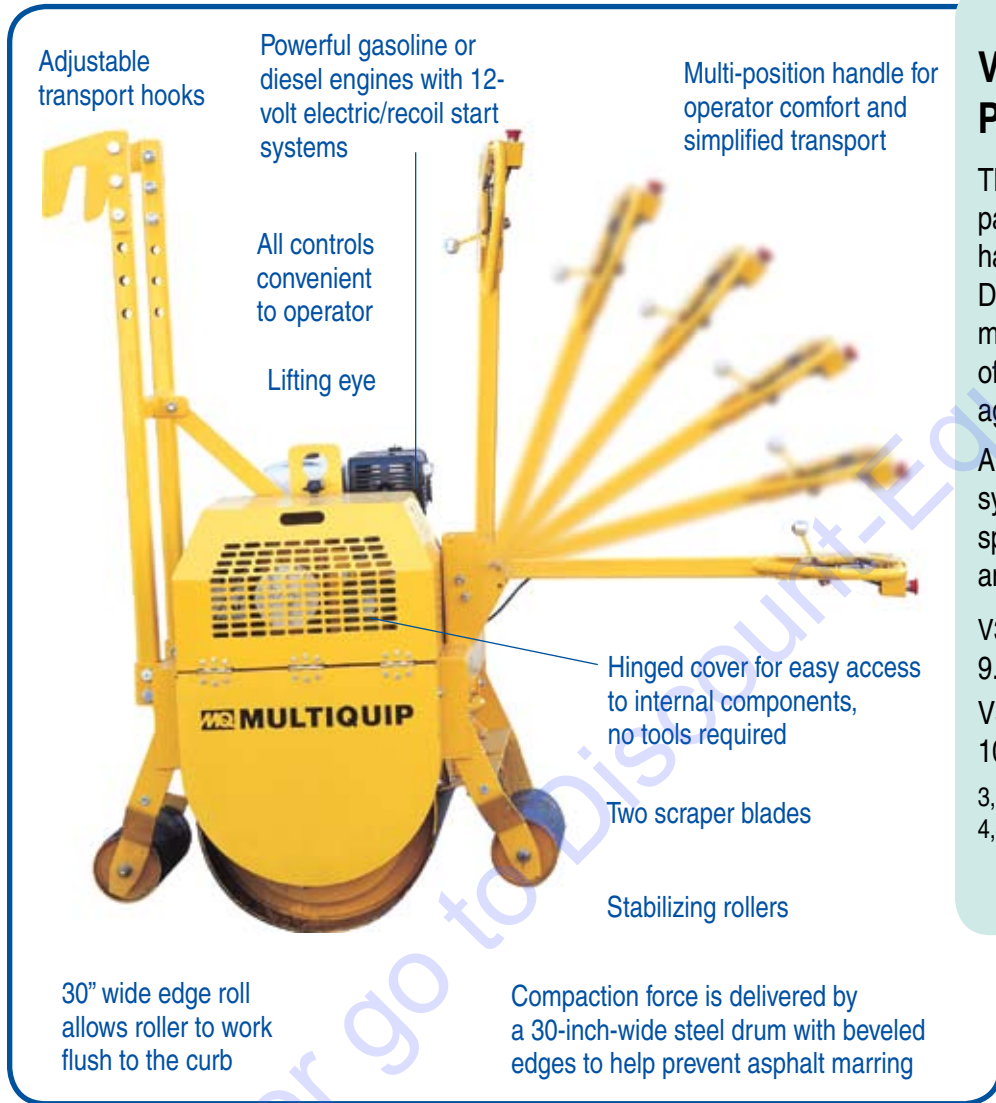


Handle folds to 90° for storage and transport.



Single-Drum Vibratory Roller

Multiquip's single-operator, walk-behind patch force—
a new generation of vibratory rollers.



Adjustable transport hooks

Powerful gasoline or diesel engines with 12-volt electric/recoil start systems

Multi-position handle for operator comfort and simplified transport

All controls convenient to operator

Lifting eye

Hinged cover for easy access to internal components, no tools required

Two scraper blades

Stabilizing rollers

30" wide edge roll allows roller to work flush to the curb

Compaction force is delivered by a 30-inch-wide steel drum with beveled edges to help prevent asphalt marring

V304 Perfect Patching Roller!

The ideal solution for asphalt patching jobs too small to be handled with tandem rollers. Dependability and performance make these rollers a favorite of contractors, highway repair agencies and municipalities.

A fully enclosed hydrostatic-drive system offers infinitely variable speed control, smooth acceleration and braking.

V304EH:

9.5-HP Honda gasoline engine*

V304EY:

10-HP Yanmar diesel engine*

3,730 lbs centrifugal force

4,400 vibrations per minute

Rugged unitized steel frame construction

Self-contained hydrostatic transmission



Scraper bars prevent the buildup of material between the drum and frame.

Large diameter stabilizing rollers maintain stability and simplify handling.



Adjustable steel brackets enable one person to easily load the roller on the tailgate of a dump truck for transportation to the next job.



Ride-On Tandem Drum Roller

For versatility, reliability and economy in a one-ton static roller, you can't make a better choice than Multiquip's R2000H.

Hydrostatic transmission offers infinitely variable speed control in both forward and reverse

Mechanically-actuated band-type brake

Automotive-style front steering controlled by a heavy-duty roller chain



Split front drum

Premium cocoa mats on front and rear drums

Special compression roll design enables work within 1 3/4" of obstructions

R2000H

The most compact ride-on we offer!

Use the R2000H for small asphalt paving jobs such as driveways, walkways, bike paths, small parking lots, and for patching. This roller compacts by weight only (also known as static compaction). This roller can be used for granular sub-base soil compaction in preparation of asphalt paving.

7.1-HP Honda gasoline engine*

Convenient service and maintenance features include: easy access engine, hinged cover for hydrostatic transmission and jackshaft chain assembly, simple belt tensioning, easily accessible steering and drive lube points.

We also have a full line of MQ Rammax ride-on and trench rollers. Ask for our "Rammax Rollers Brochure"



Vibratory Roller Specifications

Model	Compaction Force lbs (kg)	Frequency VPM (Hz)	Drum Width in. (cm)	Overall Width in. (cm)	Travel Speed mph (kph)	Engine*	Start Method	Fuel	Water Tank gal. (lt)	Operating Weight lbs (kg)
MRH800GS	5,300 (2,404)	3,300 (55.3)	25.6 (65)	27.2 (69.1)	0-2 (0-3)	11-HP Honda GX390	Electric & Recoil	Gas	10.6 (40.3)	1,530 (694)
MRH800DS2	5,300 (2,404)	3,300 (55.3)	25.6 (65)	27.2 (69.1)	0-2 (0-3)	10-HP Yanmar L100V	Electric & Recoil	Diesel	10.6 (40.3)	1,562 (709)
MDR9GH	9,600 (4,354)	3,000 (50.3)	28 (71.1)	32 (81.2)	0-1.8 (0-3)	9.5-HP Honda GX-340	Electric & Recoil	Gas	6 (23)	1,877 (851)
MDR9D	9,600 (4,354)	3,000 (50.3)	28 (71.1)	32 (81.2)	0-1.8 (0-3)	12-HP Hatz 1D81Z	Crank or Electric	Diesel	6 (23)	1,940 (880)
MDR9DYE	9,600 (4,354)	3,000 (50.3)	28 (71.1)	32 (81.2)	0-1.8 (0-3)	10-HP Yanmar L-100	Electric & Recoil	Diesel	6 (23)	1,922 (872)
V304EH	3,730 (1,692)	4,400 (73.7)	30 (76.2)	35.5 (90.1)	0-2.5 (0-4)	9.5-HP Honda GX-340	Electric & Recoil	Gas	8.3 (31)	1,045 (474)
V304ER	3,730 (1,692)	4,400 (73.7)	30 (76.2)	35.5 (90.1)	0-2.5 (0-4)	11-HP Robin EH-34	Electric & Recoil	Gas	8.3 (31)	1,045 (474)
V304EY	3,730 (1,692)	4,400 (73.7)	30 (76.2)	35.5 (90.1)	0-2.5 (0-4)	10-HP Yanmar L-100	Electric & Recoil	Diesel	8.3 (31)	1,065 (483)
AR13HAR	3,100 (1,406)	4,000 (67)	35.7 (91)	38.25 (98)	0-4.8 (0-7.7)	16.6-HP Honda GX-610	Electric	Gas	52 (200)	3,173 (1,439)
AR13DR	3,100 (1,406)	4,000 (67)	35.7 (91)	38.25 (98)	0-4.8 (0-7.7)	23.6-HP Vanguard DM850D	Electric	Diesel	52 (200)	3,227 (1,463)
R2000H	Static Force Only		Front: 28 (71) Rear: 32 (80)	37 (93)	0-5.6 (0-9.0)	7.1-HP Honda GX-240	Electric	Gas	21 (79.5)	2,235 (1,014)

* Engine power ratings are calculated by the individual engine manufacturer and the rating method may vary among engine manufacturers. Multiquip Inc. and its subsidiary companies makes no claim, representation or warranty as to the power rating of the engine on this equipment and disclaims any responsibility or liability of any kind whatsoever with respect to the accuracy of the engine power rating. Users are advised to consult the engine manufacturer's owners manual and its website for specific information regarding the engine power rating.

TO PURCHASE THIS PRODUCT PLEASE CONTACT US



**Equipment Financing and
Extended Warranties Available**



**Discount-Equipment.com is your online resource for
commercial and industrial quality parts and equipment sales.**

561-964-4949

visit us on line @ www.discount-equipment.com

Select an option below to find your Equipment

Search by Manufacturer

Search by Product Type

Request a Quote

We sell worldwide for the brands: Genie, Terex, JLG, MultiQuip, Mikasa, Essick, Whiteman, Mayco, Toro Stone, Diamond Products, Generac Magnum, Airman, Haulotte, Barreto, Power Blanket, Nifty Lift, Atlas Copco, Chicago Pneumatic, Allmand, Miller Curber, Skyjack, Lull, Skytrak, Tsurumi, Husquvarna Target, Stow, Wacker, Sakai, Mi-T-M, Sullair, Basic, Dynapac, MBW, Weber, Bartell, Bennar Newman, Haulotte, Ditch Runner, Menegotti, Morrison, Contec, Buddy, Crown, Edco, Wyco, Bomag, Laymor, EZ Trench, Bil-Jax, F.S. Curtis, Gehl Pavers, Heli, Honda, ICS/PowerGrit, IHI, Partner, Imer, Clipper, MMD, Koshin, Rice, CH&E, General Equipment, Amida, Coleman, NAC, Gradall, Square Shooter, Kent, Stanley, Tamco, Toku, Hatz, Kohler, Robin, Wisconsin, Northrock, Oztec, Toker TK, Rol-Air, APT, Wylie, Ingersoll Rand / Doosan, Innovatech, Con X, Ammann, Mecalac, Makinex, Smith Surface Prep, Small Line, Wanco, Yanmar