



The Benchmark of Service

Service Bulletin No. GS20060608
Subject: Capacitor Grounding Module
Model: GDP-5000H/GDP5H
Product Group: High-Cycle Generators
Date: June 08, 2006

SERVICE BULLETIN

Group: GS

- Mandatory (checked), Information, Recommended Change

Series/Parts Affected:

Machines Affected:

Model Serial number Range
GDP-5000H S/N ALL
GDP-5H S/N 5541049 and Below

SERVICE INFORMATION

MANDATORY UPDATE: The above referenced serial number generators may experience the following:

Problem:

- The GDP Series generators listed above DO NOT have a ground connected to the armature. The absence of the armature ground could result in electrical shock to personnel.

Solution 1:

- Install a "Capacitor Module Kit" inside the control panel. This module will eliminate the possibility of electrical shock caused by the generator.

PARTS INFORMATION

Table with 4 columns: Quantity, Part #, Description, Remarks. Row 1: 1, GDPCAPKIT, Kit, Capacitor Module, GDP-5000H/GDP-5H, Bracket Required For GDP-5000H, Bracket Not Required For GDP-5H



PARTS FINDER

**Search Website
by Part Number**



**Search Manual
Library For Parts
Manual & Lookup Part
Numbers – Purchase
or Request Quote**

Search Manuals

Enter your information to search for manuals and parts.

* Brand:

* Model:

* Serial:

* Part Number:

SEARCH

**Can't Find Part or
Manual? Request Help
by Manufacturer,
Model & Description**

Parts Order Form

Please fill in the following information:

Manufacturer:	
Model:	
Description:	
Quantity:	
Part Number:	
Part Name:	
Part Description:	
Part Location:	
Part Condition:	
Part Price:	
Part Material:	
Part Color:	
Part Weight:	
Part Dimensions:	
Part Notes:	
Part Status:	
Part Location:	
Part Condition:	
Part Price:	
Part Material:	
Part Color:	
Part Weight:	
Part Dimensions:	
Part Notes:	
Part Status:	

Discount-Equipment.com is your online resource for quality parts & equipment.

Florida: **561-964-4949** Outside Florida TOLL FREE: **877-690-3101**

Need parts?

Click on this link: <http://www.discount-equipment.com/category/5443-parts/> and choose one of the options to help get the right parts and equipment you are looking for. Please have the machine model and serial number available in order to help us get you the correct parts. If you don't find the part on the website or on one of the online manuals, please fill out the request form and one of our experienced staff members will get back to you with a quote for the right part that your machine needs.

We sell worldwide for the brands: Genie, Terex, JLG, MultiQuip, Mikasa, Essick, Whiteman, Mayco, Toro Stone, Diamond Products, Generac Magnum, Airman, Haulotte, Barreto, Power Blanket, Nifty Lift, Atlas Copco, Chicago Pneumatic, Allmand, Miller Curber, Skyjack, Lull, Skytrak, Tsurumi, Husquvarna Target, Stow, Wacker, Sakai, Mi-T-M, Sullair, Basic, Dynapac, MBW, Weber, Bartell, Bennar Newman, Haulotte, Ditch Runner, Menegotti, Morrison, Contec, Buddy, Crown, Edco, Wyco, Bomag, Laymor, EZ Trench, Bil-Jax, F.S. Curtis, Gehl Pavers, Heli, Honda, ICS/PowerGrit, IHI, Partner, Imer, Clipper, MMD, Koshin, Rice, CH&E, General Equipment, Amida, Coleman, NAC, Gradall, Square Shooter, Kent, Stanley, Tamco, Toku, Hatz, Kohler, Robin, Wisconsin, Northrock, Oztec, Toker TK, Rol-Air, APT, Wylie, Ingersoll Rand / Doosan, Innovatech, Con X, Ammann, Mecalac, Makinex, Smith Surface Prep, Small Line, Wanco, Yanmar

INSTALLATION INSTRUCTIONS

WORK SAFELY!

Only a qualified service technician with proper training should perform this installation.

Required Tools/Materials

- 8 mm Wrench or Socket
- Phillips Head Screwdriver

Safety Procedures

Follow all shop safety procedures before attempting installation of the Capacitor Module Kit:

Front Panel Removal (GDP-5H)

1. Place the generator on a level secure workbench that is free of dirt and debris.
2. Using an 8 mm wrench or socket, remove the hex head bolts (4) that secure the control panel to the generator frame. See Figure 1.



Figure 1. GDP-5H Control Panel Removal

3. After the four front panel bolts have been removed, pull the control panel forward and tilt downward. To support the control panel, place a wood block underneath as shown in Figure 2.



Figure 2. Control Panel Support Block

4. Remove the hex nut and machine screw from the GFCI receptacle (5-20R) as shown in Figure 3.



Figure 3. (GFCI Receptacle)

5. Install the capacitor module on top of the GFCI receptacle-mounting tab as shown in Figure 4. Align the hole on the capacitor module with the hole on the GFCI mounting tab.
6. Reinstall the hex nut and machine screw (step 4) and tighten securely. If desired, you can use the supplied hex nut when securing the components.

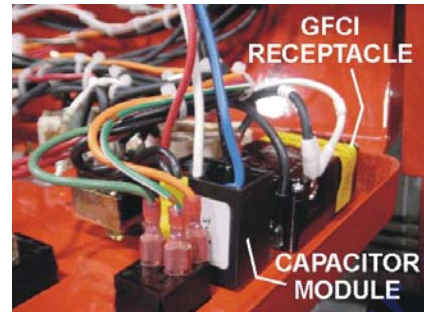


Figure 4. Mounting The Capacitor Module

7. Route the black wire from the capacitor module as necessary, securing with tie-wraps and connect it to the generator ground terminal as shown in Figure 5. Note: it may be necessary to fold the black wire due to its length.



Figure 5. Ground Terminal

8. Route and connect the **RED** wire on the capacitor module to the **U** position (contact) on the terminal board as shown in Figure 6. Connect the **WHITE** wire to the **V** position (contact) and connect the **BLUE** wire to the **W** position (contact) on the terminal board. Use Tie-wraps to secure all wires.

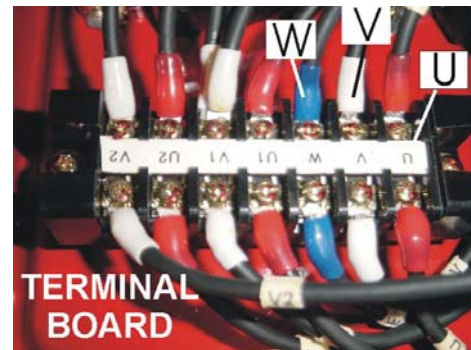


Figure 6. Terminal Board Connections

9. Reinstall the control panel and install the four hex head bolts that secure the control panel to the generator frame. Tighten securely.

Front Panel Removal (GDP-5000H)

1. Place the generator on a level secure workbench that is free of dirt and debris.
2. Using an 8 mm wrench or socket, remove the hex head bolts (6) that secure the control panel to the generator frame. See Figure 7.

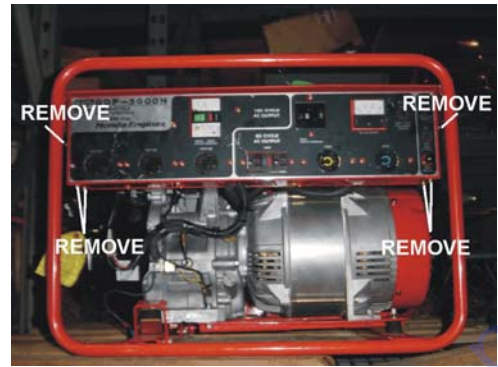


Figure 7. GDP-5000H Control Panel Removal

3. After the six front panel bolts have been removed, pull the control panel forward and tilt downward. To support the control panel, place a wood block underneath as shown in Figure 8.

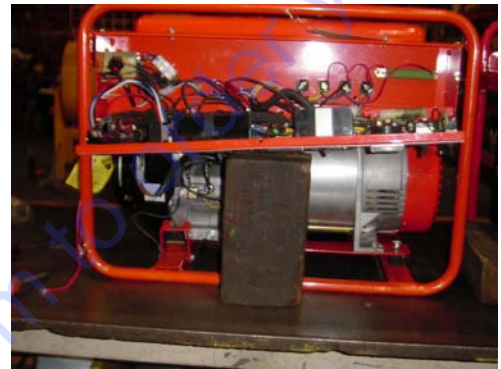


Figure 8. Control Panel Support Block

4. Using a phillips head screwdriver remove the screws securing the terminal board to the generator frame. See Figure 9.



Figure 9. Terminal Board Removal

5. Using the M4 hex nut, lock washer and flat washer, attach the capacitor module to the mounting bracket as shown in Figure 10. Align the hole on the capacitor module with the hole on the mounting bracket.

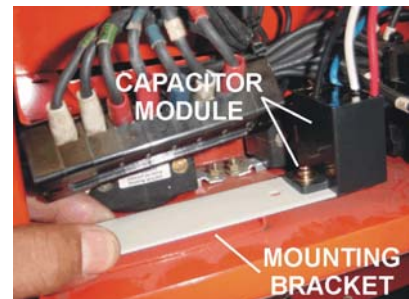


Figure 10. Mounting Bracket

6. Install the mounting bracket underneath the terminal board (Figure 11). Align the holes on the on the mounting bracket with the holes on the terminal board. Insert the screws and associated hardware into the terminal board mounting holes and tighten securely.

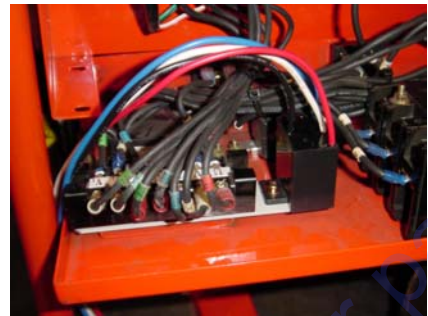


Figure 11. Terminal Board Installation

7. Route the black wire from the capacitor module as necessary, securing with tie-wraps and connect it to the generator GFCI ground terminal as shown in Figure 12.



Figure 12. GFCI Ground

8. Route and connect the **RED** wire on the capacitor module to the **U** position (contact) on the terminal board as shown in Figure 13. Connect the **WHITE** wire to the **V** position (contact) and connect the **BLUE** wire to the **W** position (contact) on the terminal board. Use Tie-wraps to secure all wires.

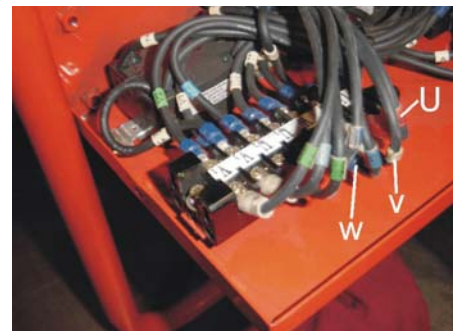


Figure 13. Terminal Board Connections

9. Reinstall the control panel and install the six hex head bolts that secure the control panel to the generator frame. Tighten securely.

PARTS FINDER

**Search Website
by Part Number**



**Search Manual
Library For Parts
Manual & Lookup Part
Numbers – Purchase
or Request Quote**

Search Manuals

Enter your information to help us find the right parts manual for your machine.

* Brand:

* Model:

* Serial:

* Part Number:

SEARCH

**Can't Find Part or
Manual? Request Help
by Manufacturer,
Model & Description**

Parts Order Form

Please fill in the following information to help us find the right part for your machine.

Manufacturer:	<input type="text"/>
Model:	<input type="text"/>
Description:	<input type="text"/>
Part Number:	<input type="text"/>
Quantity:	<input type="text"/>
Notes:	<input type="text"/>

Submit

Discount-Equipment.com is your online resource for quality parts & equipment.

Florida: **561-964-4949** Outside Florida TOLL FREE: **877-690-3101**

Need parts?

Click on this link: <http://www.discount-equipment.com/category/5443-parts/> and choose one of the options to help get the right parts and equipment you are looking for. Please have the machine model and serial number available in order to help us get you the correct parts. If you don't find the part on the website or on one of the online manuals, please fill out the request form and one of our experienced staff members will get back to you with a quote for the right part that your machine needs.

We sell worldwide for the brands: Genie, Terex, JLG, MultiQuip, Mikasa, Essick, Whiteman, Mayco, Toro Stone, Diamond Products, Generac Magnum, Airman, Haulotte, Barreto, Power Blanket, Nifty Lift, Atlas Copco, Chicago Pneumatic, Allmand, Miller Curber, Skyjack, Lull, Skytrak, Tsurumi, Husquvarna Target, Stow, Wacker, Sakai, Mi-T-M, Sullair, Basic, Dynapac, MBW, Weber, Bartell, Bennar Newman, Haulotte, Ditch Runner, Menegotti, Morrison, Contec, Buddy, Crown, Edco, Wyco, Bomag, Laymor, EZ Trench, Bil-Jax, F.S. Curtis, Gehl Pavers, Heli, Honda, ICS/PowerGrit, IHI, Partner, Imer, Clipper, MMD, Koshin, Rice, CH&E, General Equipment, Amida, Coleman, NAC, Gradall, Square Shooter, Kent, Stanley, Tamco, Toku, Hatz, Kohler, Robin, Wisconsin, Northrock, Oztec, Toker TK, Rol-Air, APT, Wylie, Ingersoll Rand / Doosan, Innovatech, Con X, Ammann, Mecalac, Makinex, Smith Surface Prep, Small Line, Wanco, Yanmar