



Count on it.

Parts Catalog

STX-38

Stump Grinder

Model No. 23212—Serial No. 313000001 and Up



Ordering Replacement Parts

To order replacement parts, please supply the part number, the quantity, and the description of each part desired.

Understanding Reference Numbers

Each identified part in an illustration has a reference number. The reference number for a part also appears in the parts list, along with other information about the part.

This catalog uses two special reference number formats, one to indicate parts in a service assembly and another to indicate the quantity of a given part in an illustration.

Service Assembly Reference Numbers

Parts in service assemblies have reference numbers in the form a:b. The a represents the reference number of the entire service assembly and the b represents a sequential number unique to each part within the service assembly.

For example, a wheel assembly might be identified by reference number 6, the tire by 6:1, the valve by 6:2, and the wheel by 6:3. When you order the assembly identified by reference number 6, you receive all parts identified by reference numbers 6:1, 6:2, and 6:3. However, you may also order any part individually. Reference numbers of this type appear in illustration and in parts lists.

Reference Numbers Indicating Quantity

In an illustration, if a reference number indicates more than one part, the reference number has the form nX y. The n represents the quantity of the part, the X is the multiplication symbol, and the y represents the reference number.

For example, in an illustration, the reference number 2X 37 means that two of the parts identified by reference number 37 are indicated.

List of Abbreviations

AR: as required

ASM: assembly

BBC: blade brake control

BHTF: button head thread forming

CARR: carriage

CCW: counter clockwise

CW: clockwise

DEG: degrees

DPA: Dual Point Adjustment

ECM: electronic control module

EXT: external

FH: flat head

GA: gauge

HD: heavy-duty

HF: hex flange

HH: hex head

HHF: hex head flange

HHFTF: hex head flange thread forming

HJ: hex jam

HLH: hex lag head

HOC: height-of-cut

HSBH: hex socket button head

HSFH: hex socket flat head

HSH: hex socket head

HWH: hex washer head

HWHTF: hex washer head thread forming

HYD: hydraulic

LH: left hand

LP: Liquefied Petroleum Gas

LPG: Liquefied Petroleum Gas

NI: nylon insert

NPTF: national pipe thread fine

PFH: phillips flat head

PPH: phillips pan head

PPHTF: phillips pan head thread forming

PRH: phillips round head

PTH: phillips truss head

PTO: power-take-off

RH: right hand

ROPS: roll-over protection system

RRB: rear roller brush

SFH: slotted fillister head

SHH: slotted hex head

SHWH: slotted hex washer head

SPH: slotted pan head

SQH: square head

SRH: slotted round head

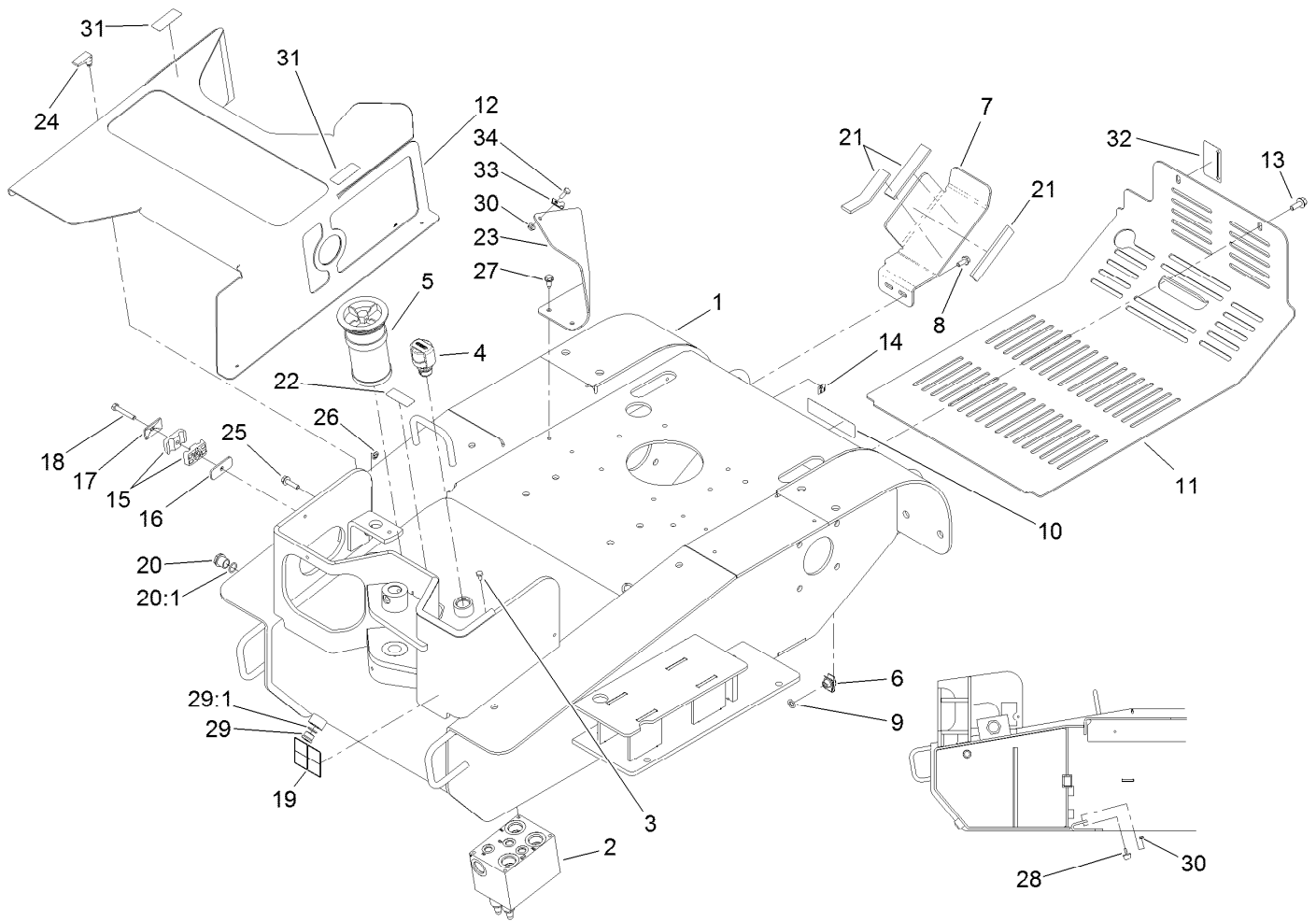
STD: standard

TAP: self tapping

TTH: torx truss head

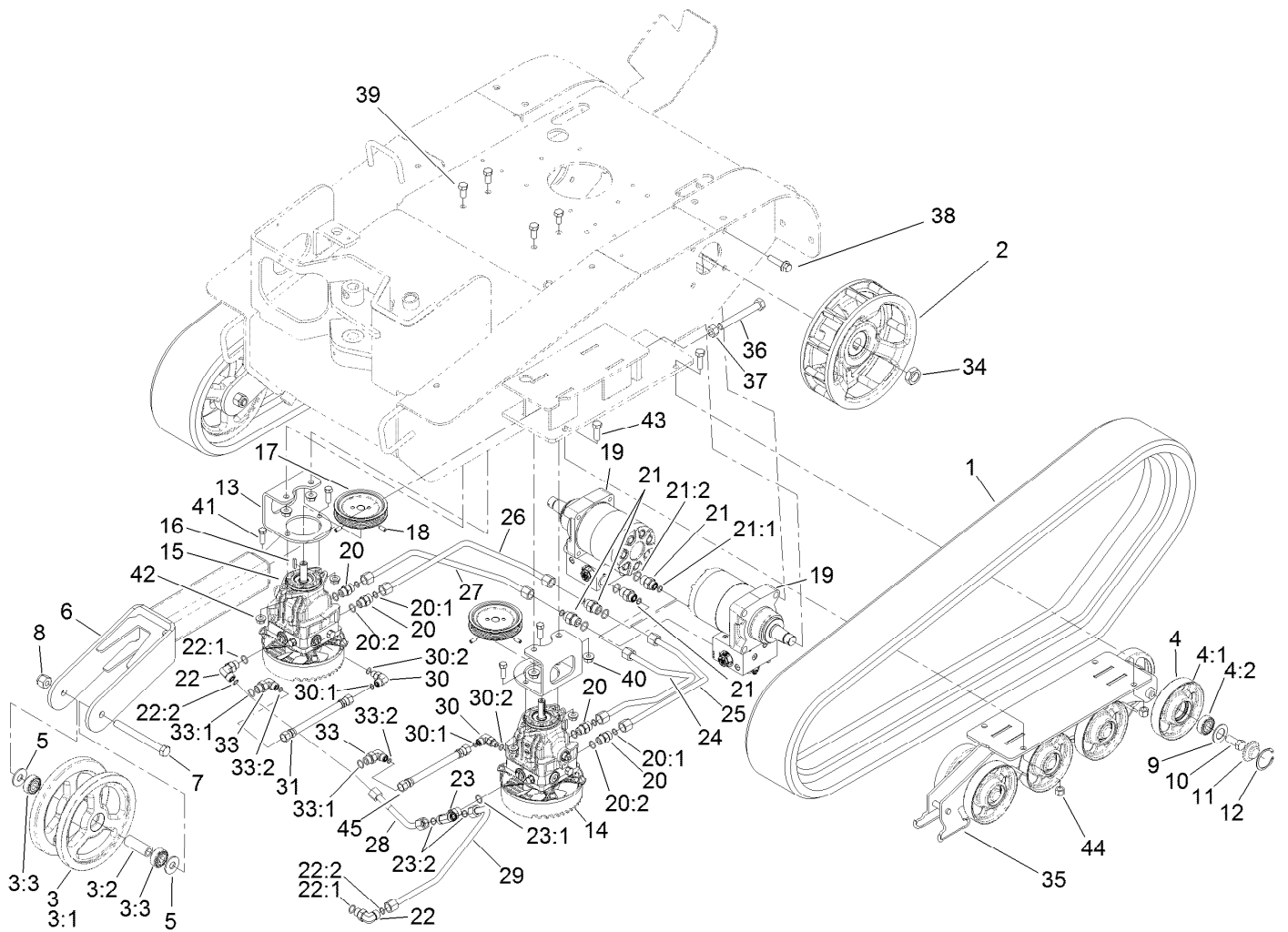
Contents

Frame Assembly.....	4
Track Assembly	5
Hydraulic Motor Assembly No. 121-1957.....	7
Engine, Gear Pump and Idler Arm Assembly.....	8
Traction Control Assembly	10
Parking Brake Assembly.....	12
Cutter Head Assembly.....	13
Tower Assembly	15
Control Valve Assembly No. 119-4585.....	17
Cooler Assembly	18
Hydraulic Routing Assembly.....	20
Electrical Assembly	22
Two-Button Handle Grip Assembly No. 119-4587.....	24



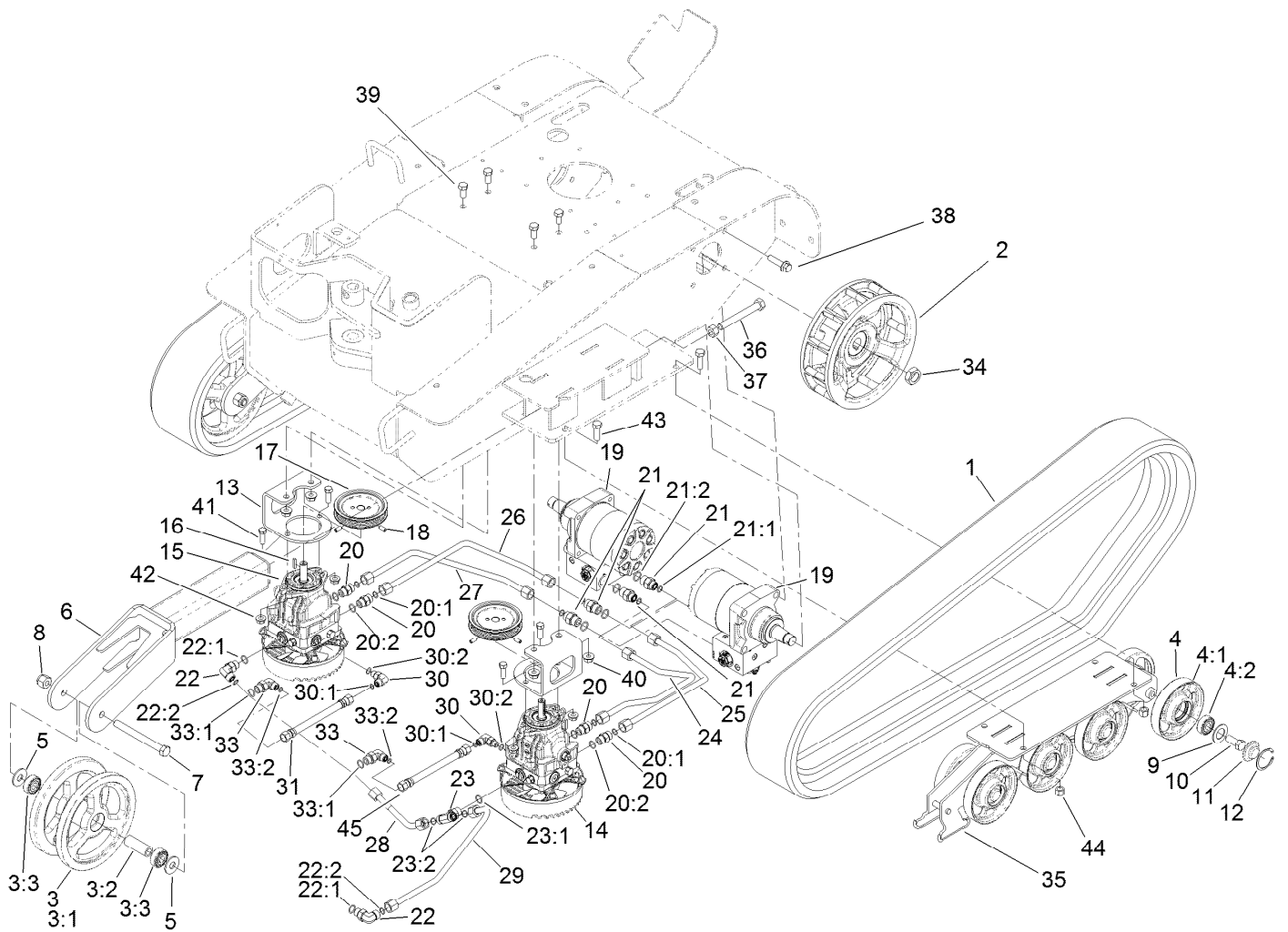
Frame Assembly

Ref.	Part Number	Qty.	Description	Ref.	Part Number	Qty.	Description
1	121-4535	1	Frame-Main	19	100-4650	1	Decal-Warning
2	121-1022	1	Valve-Cutter	20	114-3075	1	Sight Glass ASM
3	321-3	4	Screw-HH	20:1	237-79	1	O-Ring
4	115-9793	1	Breather	21	121-0894	3	Pad-Foam
5	115-5745	1	Cartridge-Filter	22	93-6686	1	Decal-Oil, HYD
6	112-4576	2	Nut-Clip, U	23	125-0310-01	1	Plate-Deflector, RH
7	121-1141-01	1	Bracket-Tank	24	74-5950	4	Latch-Swell
8	3234-47	2	Screw-HHF	25	3234-36	1	Screw-HHF
9	107-3154	2	Nut-Push	26	117-2749	1	Nut-Push
10	93-7814	1	Decal-Danger	27	32144-70	2	Screw-HWHTF
11	121-4532	1	Cover-Rear	28	1-523420	2	Bumper
12	121-4531	1	Cover-Front	29	353-988	1	Plug-Hex
13	3234-11	2	Screw-HHF	29:1	237-79	1	O-Ring
14	93-9084	4	Decal-Point, Lift	30	32128-33	3	Nut-HF
15	56-7976	2	Clamp-Tube	31	115-2047	2	Decal-Surface, Hot
16	119-4636	1	Plate-Clamp	32	93-9363	1	Decal-Brake, Parking
17	69-9760	1	Coverplate	33	2412-72	1	Clip-Closed, Insulated
18	322-10	1	Screw-HH	34	321-4	1	Screw-HH



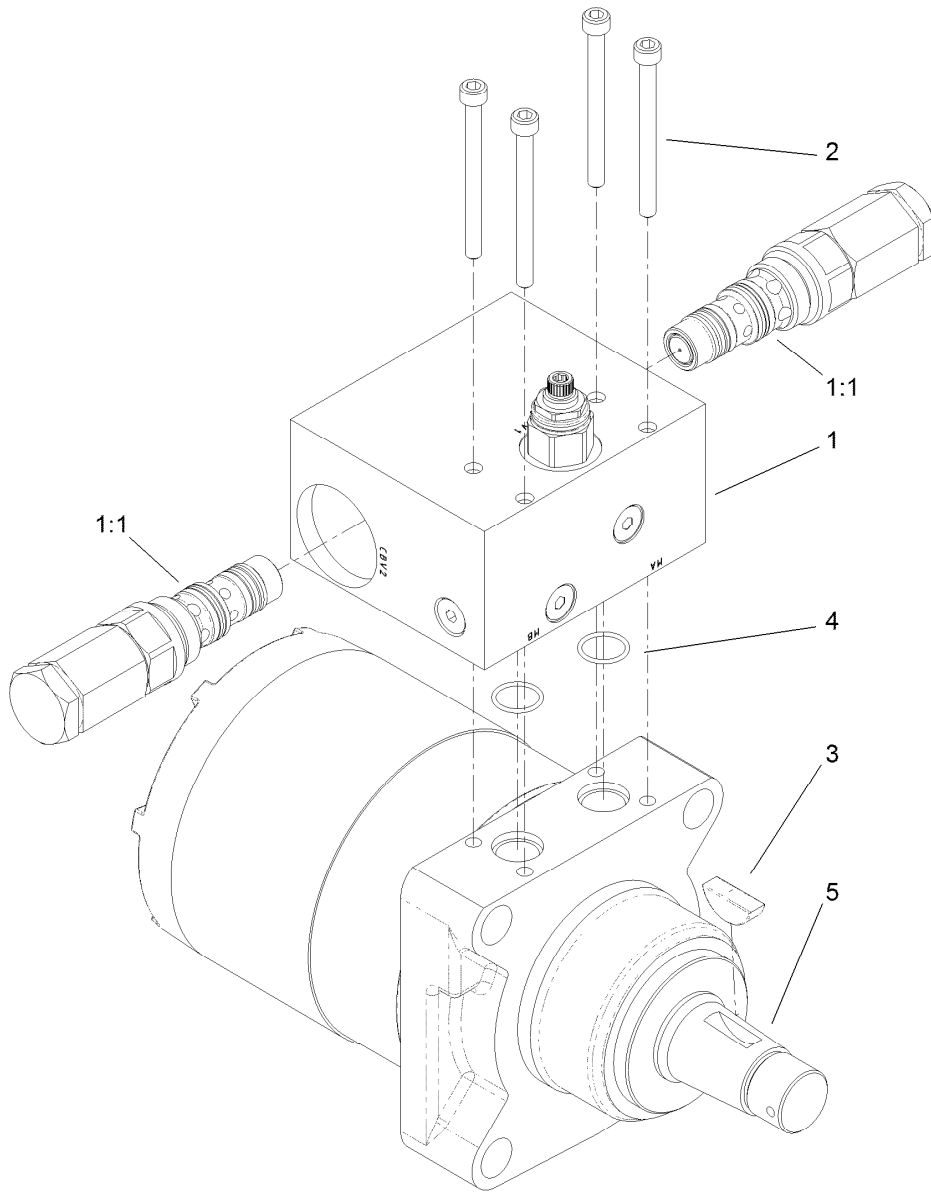
Track Assembly

Ref.	Part Number	Qty.	Description	Ref.	Part Number	Qty.	Description
1	121-1021	2	Track-Rubber	17	109-2202	2	Sheave
2	117-6426-03	2	Wheel-Drive	18	3246-6	4	Screw-Set, HSH
3	104-5745	2	Tensioner Wheel ASM	19	121-1957	2	HYD Motor ASM
3:1	104-5747-03	1	Wheel-Tensioner	20	340-4	4	Fitting-HYD, Straight
3:2	98-9835	1	Spacer-Wheel, Tensioner	20:1	237-30	1	O-Ring
3:3	120-5378	2	Bearing-Ball	20:2	237-79	1	O-Ring
4	112-4817	16	Wheel-Tensioner	21	340-6	4	Fitting-HYD, Straight
4:1	114-3014-03	1	Wheel-Track	21:1	237-30	1	O-Ring
4:2	120-5378	1	Bearing-Ball	21:2	237-80	1	O-Ring
5	3256-7	4	Washer-Flat	22	340-98	2	Fitting-HYD, 90 DEG
6	121-1018-03	2	Arm-Tensioner	22:1	237-79	1	O-Ring
7	327-17	2	Screw-HH	22:2	237-30	1	O-Ring
8	3296-24	2	Nut-Lock, NI	23	340-157	1	Fitting-HYD, Tee
9	106-7585	16	Gasket-Bogie	23:1	237-79	1	O-Ring
10	327-4	16	Screw-HH	23:2	237-30	2	O-Ring
11	106-7557	16	Cap-Wheel, Bearing	24	121-1124	1	Tube-HYD
12	106-7595	16	Ring-Snap, Internal	25	121-1125	1	Tube-HYD
13	115-1289-01	2	Bracket-Mount, Pump	26	121-1126	1	Tube-HYD
14	121-1953	1	Pump-HYD, LH	27	121-1127	1	Tube-HYD
15	121-1954	1	Pump-HYD, RH	28	121-1198	1	Tube-HYD
16	80-6090	2	Key-Pump	29	121-1130	1	Tube-HYD



Track Assembly (continued)

Ref.	Part Number	Qty.	Description	Ref.	Part Number	Qty.	Description
30	340-77	2	Fitting-HYD, 90 DEG	37	3217-11	2	Nut-Hex
30:1	237-22	1	O-Ring	38	3234-27	8	Screw-HHF
30:2	237-42	1	O-Ring	39	325-4	4	Screw-HH
31	94-4712	1	Hose-HYD	40	32128-49	4	Nut-HHF
33	340-18	2	Fitting-HYD, 90 DEG	41	324-5	4	Screw-HH
33:1	237-79	1	O-Ring	42	32128-42	4	Nut-HF
33:2	237-22	1	O-Ring	43	325-6	8	Screw-HH
34	106-8159	2	Nut-Lock	44	3296-23	8	Nut-Lock, NI
35	121-0883-01	2	Mount-Wheel	45	76-9420	1	Hose-HYD
36	125-0357	2	Screw-HH, TAP				

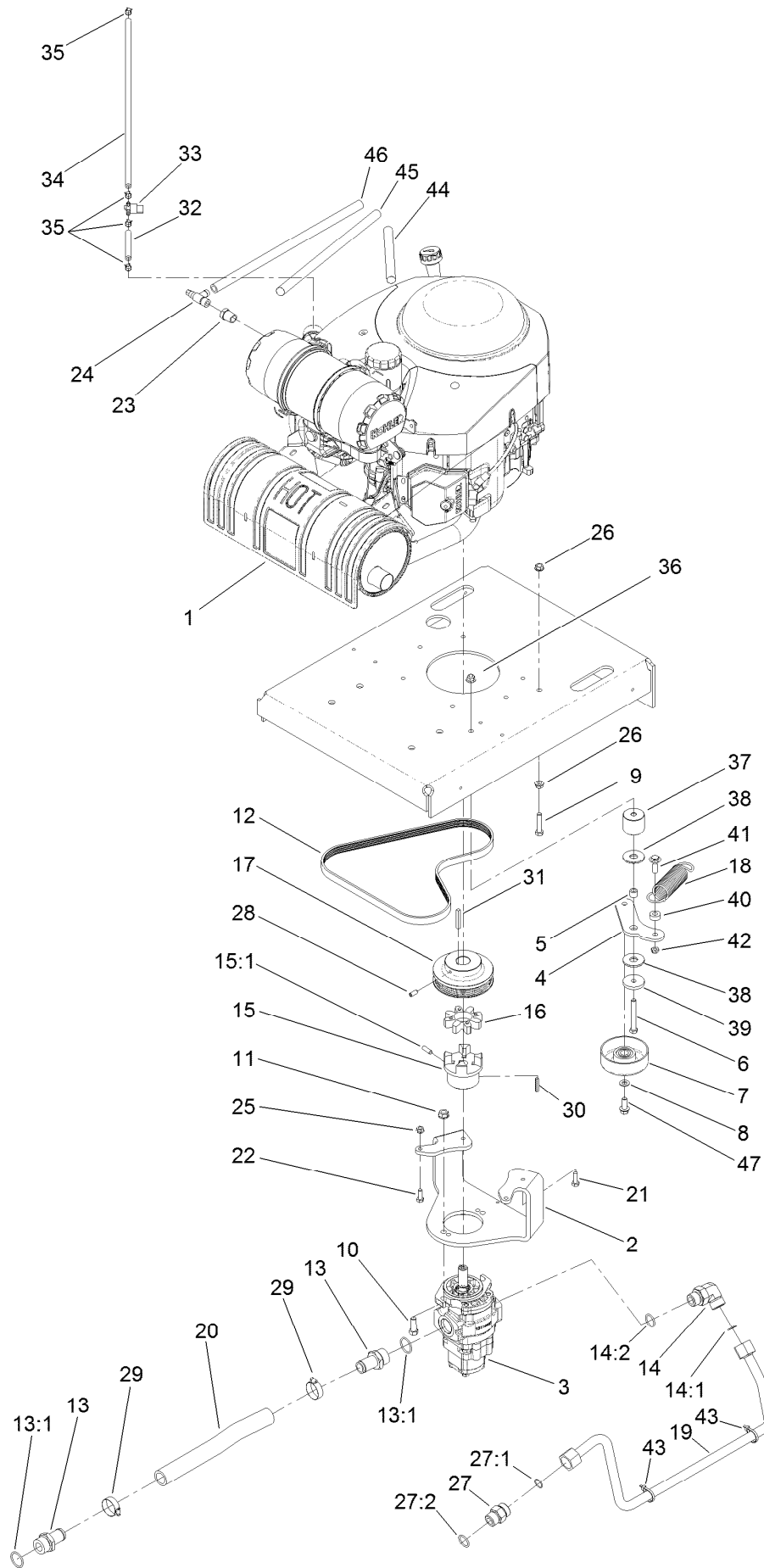


Hydraulic Motor Assembly No. 121-1957

Ref.	Part Number	Qty.	Description
1	121-4464	1	Counterbalance Valve ASM
1:1	121-4463	2	Cartridge-Cb
2	119-4611	4	Bolt-HSH
3	3257-42	1	Key-Woodruff
4	120-0691	2	O-Ring
5	76-0860	1	Shaft-Coupling
6	100-6131	1	Seal Kit (HYD Motor) ●

● Not illustrated

Engine, Gear Pump and Idler Arm Assembly



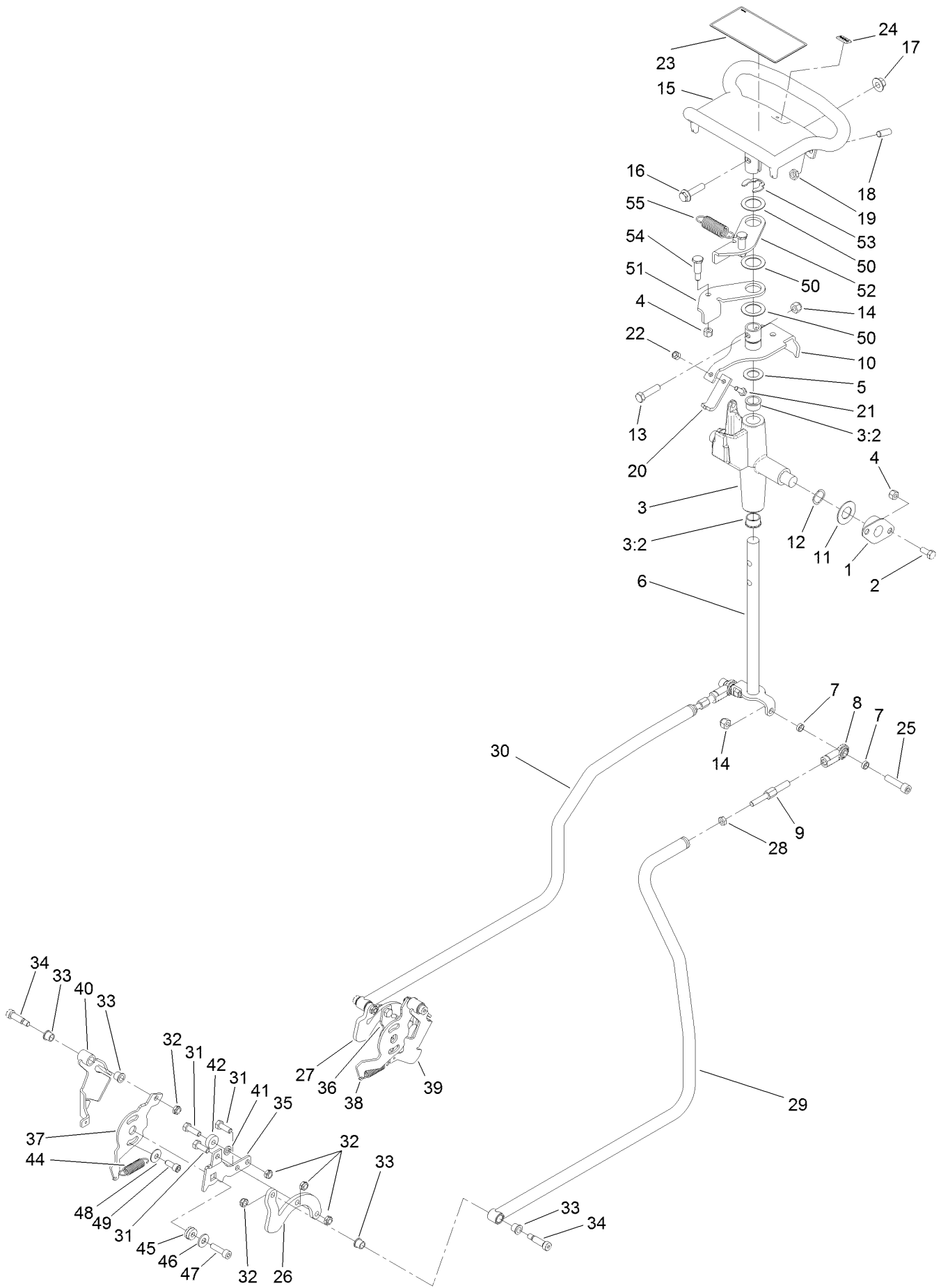
Engine, Gear Pump and Idler Arm Assembly (continued)

<i>Ref.</i>	<i>Part Number</i>	<i>Qty.</i>	<i>Description</i>	<i>Ref.</i>	<i>Part Number</i>	<i>Qty.</i>	<i>Description</i>
1		1	Engine-Kohler, Cv980 ●■	24	103-1965	1	Valve-Drain, Oil
2	114-2912-01	1	Mount-Pump	25	32128-20	2	Nut-HF
3	121-1952	1	Gear Pump ASM	26	3290-357	2	Nut-HHF, Whiz
4	125-0252	1	Arm-Idler	27	340-9	1	Fitting-HYD, Straight
5	1-413088	1	Bushing-Lever, Lift	27:1	237-58	1	O-Ring
6	323-14	1	Screw-HH	27:2	237-81	1	O-Ring
7	95-8802	1	Pulley-Idler	28	3246-6	2	Screw-Set, HSH
8	3256-24	1	Washer-Flat	29	2412-34	2	Clamp-Hose
9	323-9	1	Screw-HH	30	27-8590	1	Key-Square
10	324-5	2	Screw-HH	31	608006	1	Key-Square
11	32128-37	2	Nut-HF	32	109-0295	1	Hose-Fuel
12	121-4326	1	Belt-V	33	1-603770	1	Valve-Fuel
13	354-78	2	Connector-Hose	34	110-1872	1	Hose-Fuel
13:1	237-146	1	O-Ring	35	2412-98	4	Clamp-Hose
14	340-142	1	Fitting-HYD, 90 DEG	36	104-8301	1	Nut-Flange, NI
14:1	237-58	1	O-Ring	37	125-0251	1	Spacer-Idler
14:2	237-81	1	O-Ring	38	114-0463	2	Washer-Friction, Composite
15	121-4330	1	Hub-Coupler	39	110-9981	1	Washer-Plain
15:1	100-7594	1	Screw-Set	40	104-8426	1	Spacer
16	104-3542	1	Spider	41	614672	1	Bolt-Shoulder
17	121-1028	1	Pulley-Engine	42	3296-59	1	Nut-Lock, NI
18	105-6992	1	Spring-Extension	43	3290-379	2	Tie-Cable
19	121-1128	1	Tube-HYD	44	121-4403	1	Sleeve-Thermal,
20	121-4340	1	Hose-Suction	45	121-4404	1	Sleeve-Thermal,
21	33114-025	4	Screw-HH	46	98-4667	1	Hose
22	322-4	2	Screw-HH	47	3234-11	1	Screw-HHF
23	103-1390	1	Bushing				

● Not serviced separately

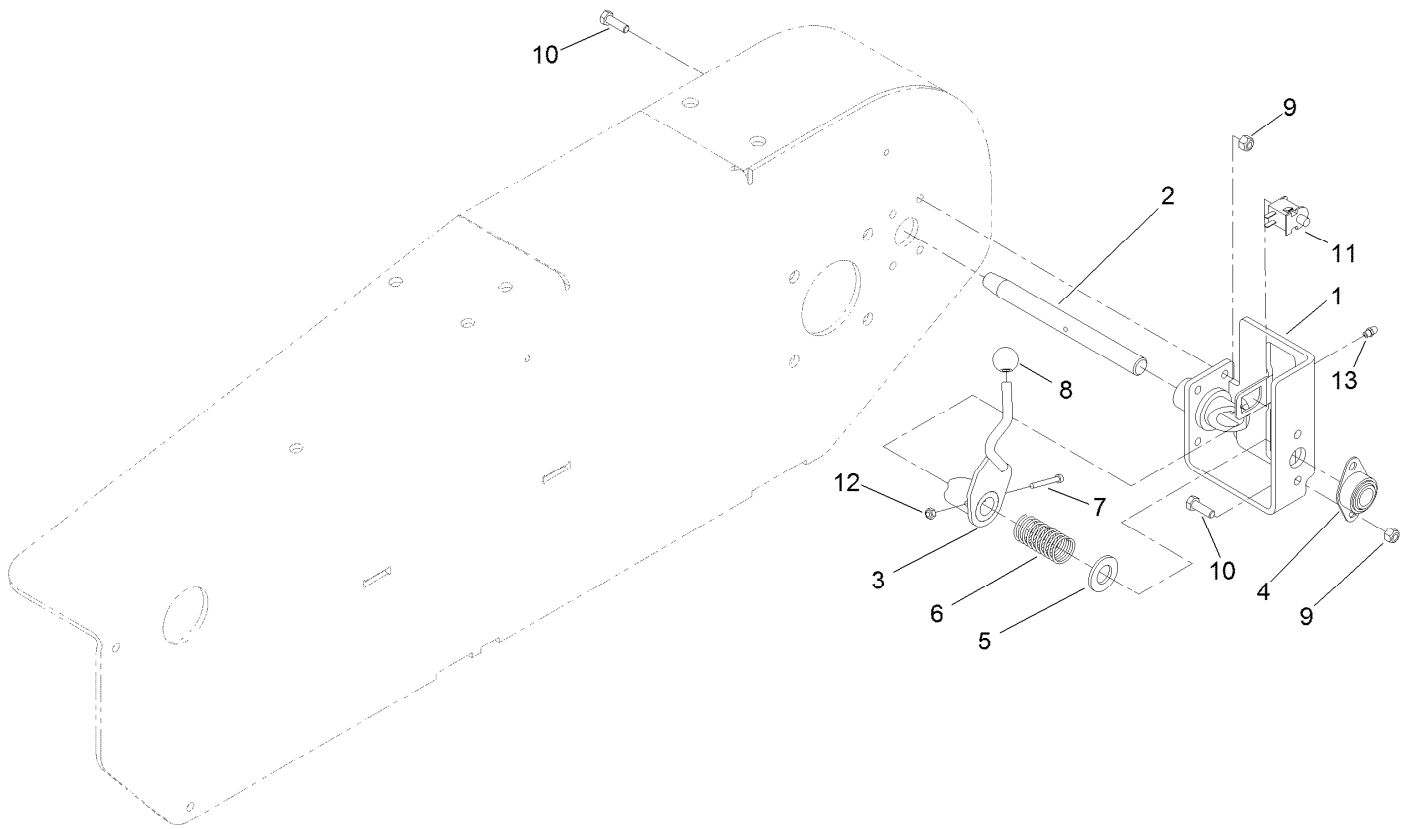
■ Obtain parts from www.kohlerplus.com

Traction Control Assembly



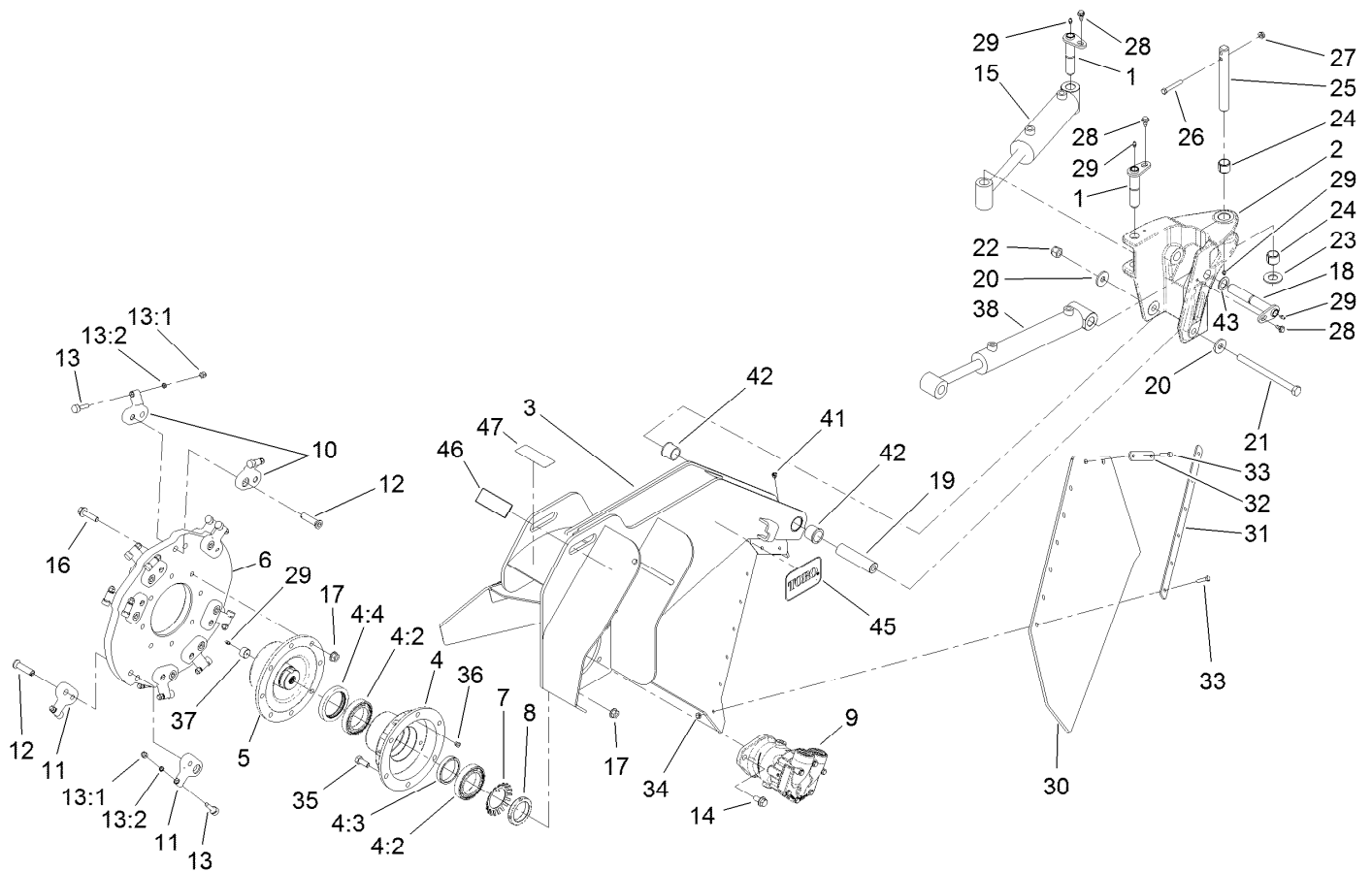
Traction Control Assembly (continued)

<i>Ref.</i>	<i>Part Number</i>	<i>Qty.</i>	<i>Description</i>	<i>Ref.</i>	<i>Part Number</i>	<i>Qty.</i>	<i>Description</i>
1	68-2970	2	Bushing	28	3220-2	2	Nut-Jam
2	322-3	4	Screw-HH	29	121-1108	1	LH Control Rod ASM
3	106-5737	1	Control Support ASM	30	121-1109	1	RH Control Rod ASM
3:2	256-252	2	Bearing-Flange	31	322-4	6	Screw-HH
4	3296-29	6	Nut-Lock, NI	32	3296-47	10	Nut-Lock, NI
5	257-8	1	Washer-Thrust	33	256-116	8	Bushing-Flange
6	117-6335	1	Rod-Drive	34	114-8629	4	Bolt-Shoulder
7	108-0634	4	Spacer-Plate, Retaining	35	115-6628	1	Plate-Arm, Return, LH
8	103-1167	2	Joint-Ball End, LH	36	115-6536	1	Plate-Arm, Return
9	117-6334	2	Link-Control, Adjustment	37	115-6549	1	Plate-Base, LH
10	112-2783	1	Lever-Pivot	38	115-6535	1	Plate-Base, RH
11	3256-39	2	Washer-Flat	39	115-6636	1	Pivot-RH
12	95-3703	2	Washer-Spring, Wave	40	115-6637	1	Pivot-LH
13	323-8	1	Screw-HH	41	3253-4	2	Washer-Lock
14	3296-39	3	Nut-Lock, NI	42	251-259	2	Bearing-Ball
15	106-7614-03	1	Handle-Control	44	121-4409	2	Spring-Extension
16	3234-18	1	Screw-HHF	45	117-6429	2	Lock-Trunion
17	32128-43	1	Nut-Flange	46	3256-3	2	Washer-Flat
18	3247-6	2	Screw-Set	47	94-3559	2	Screw-HSH
19	3218-3	2	Nut-Jam	48	3290-456	2	Washer-Belleville
20	115-1204	1	Plate-Neutral	49	3273-14	2	Screw-HSH
21	321-4	1	Screw-HH	50	108-9743	3	Washer-Plain
22	3296-42	1	Nut-Lock, NI	51	98-8407	1	Lever-Return, RH
23	115-4020	1	Decal-Traction	52	98-8408	1	Lever-Return, LH
24	98-1459	1	Decal	53	32151-91	1	Ring-Retaining
25	3274-2	2	Screw-HSH	54	63-2650	2	Screw-Shoulder
26	121-1123	1	Plate-Control, LH	55	108-4724	1	Spring-Extension
27	121-1122	1	Plate-Control, RH				



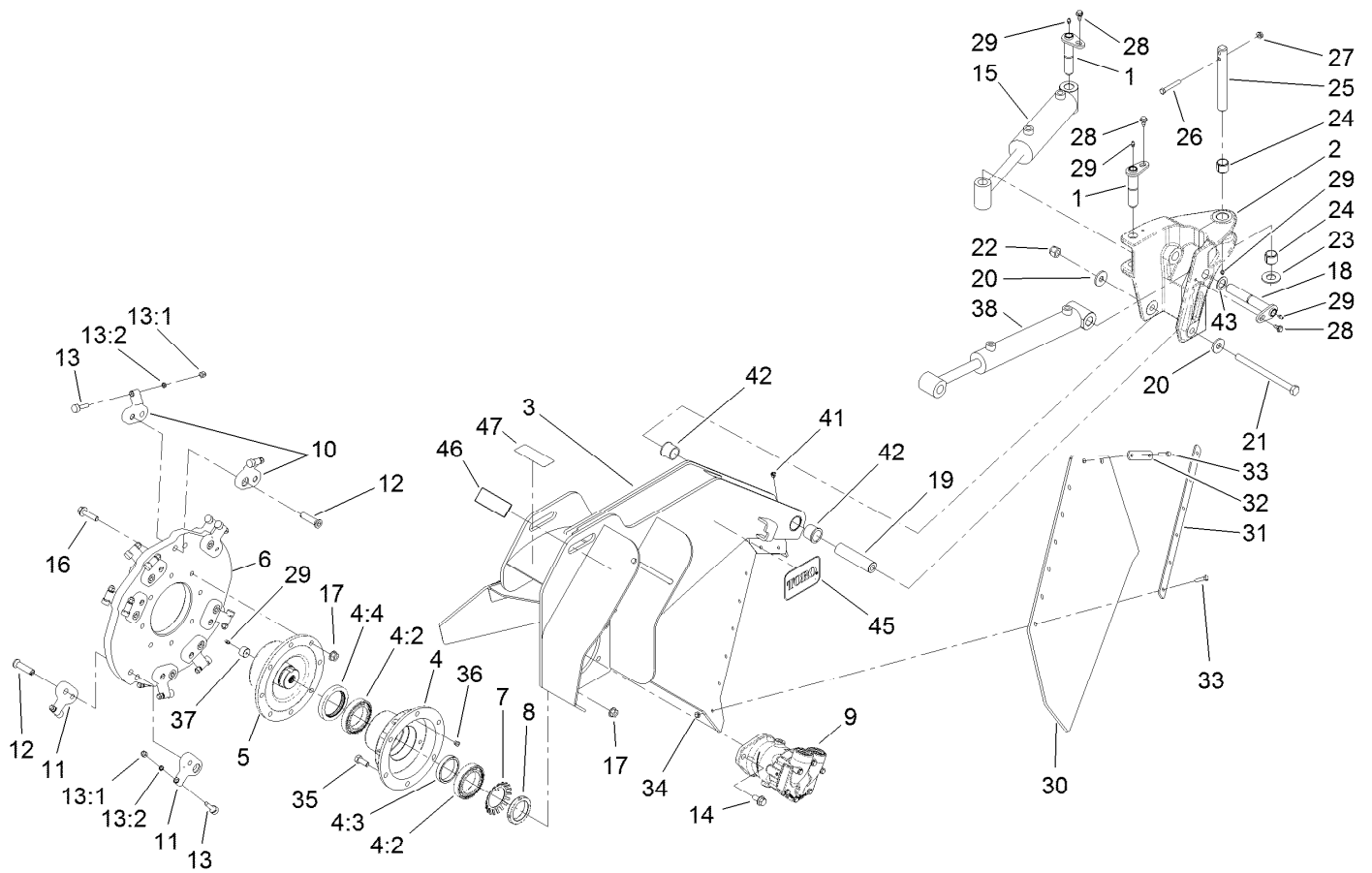
Parking Brake Assembly

<i>Ref.</i>	<i>Part Number</i>	<i>Qty.</i>	<i>Description</i>
1	125-0259-03	1	Bracket-Brake
2	121-4352	1	Shaft-Brake
3	121-4356-03	1	Handle-Brake
4	68-2970	1	Bushing
5	3256-28	1	Washer-Flat
6	125-0344	1	Spring-Comperssion
7	3274-59	1	Screw-HSH
8	233-69	1	Knob
9	3296-29	6	Nut-Lock, NI
10	322-5	6	Screw-HH
11	740275	1	Switch
12	3296-2	1	Nut-Lock, NI
13	302-5	1	Fitting-Grease



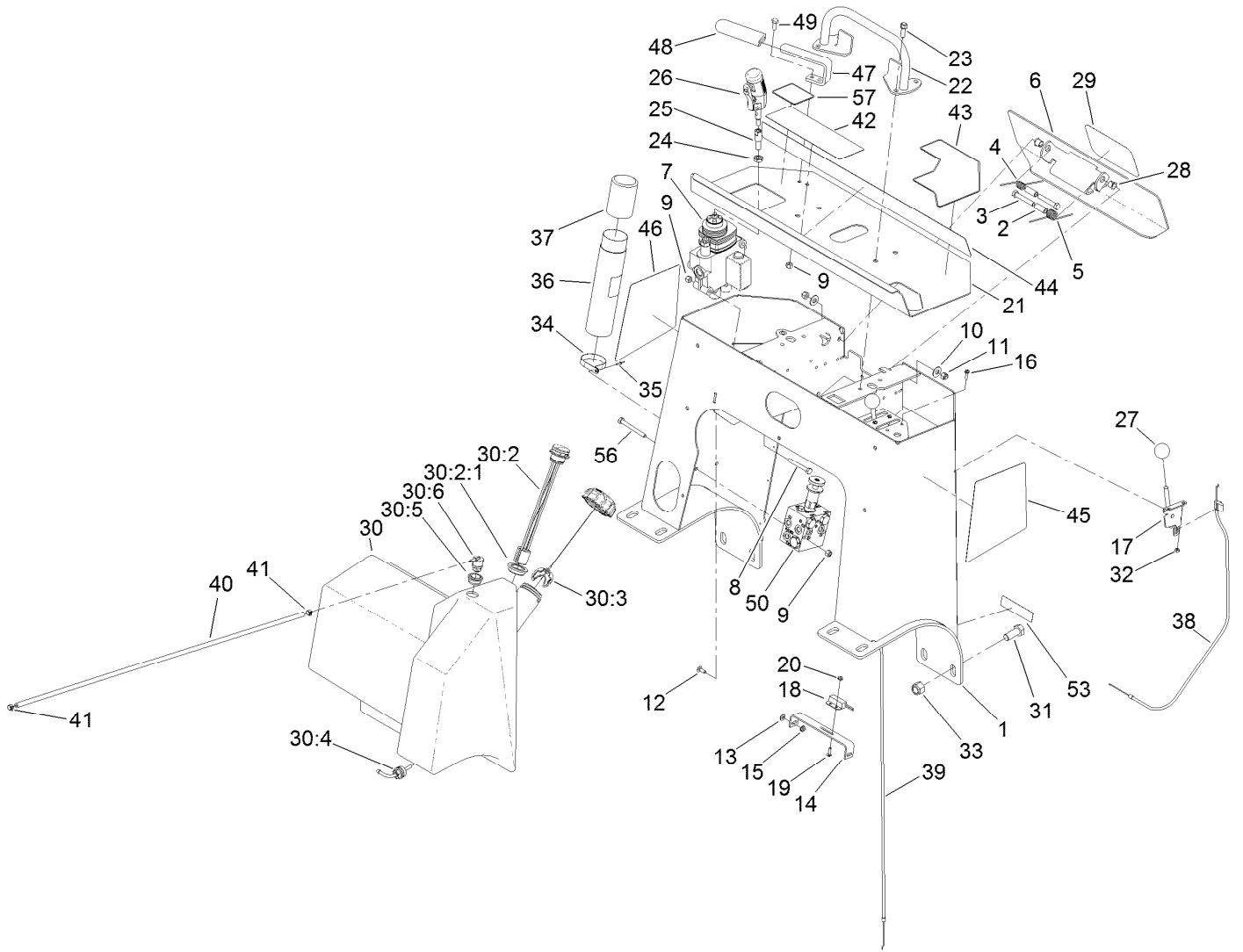
Cutter Head Assembly

Ref.	Part Number	Qty.	Description	Ref.	Part Number	Qty.	Description
1	121-1113	2	Pin-Pivot	15	121-1956	1	HYD Cylinder ASM
2	121-0871-01	1	Head-Pivot	16	3234-27	8	Screw-HHF
3	121-4440-01	1	Head-Grinder	17	32128-49	14	Nut-HHF
3	121-4533	1	Head-Grinder	18	121-0860	2	Pin-Pivot
4	121-4458	1	Wheel Bearing Housing	19	121-1101	1	Spacer-Pivot
4:2	121-4378	2	Bearing-Ball	20	104-9216	2	Washer-Hardened
4:3	121-0872	1	Spacer-Bearing	21	117-6327	1	Bolt-HH
4:4	121-4379	1	Seal-Grease	22	3296-53	1	Nut-Lock, NI
5	121-4337	1	Shaft-Cutter	23	256-121	1	Washer-Thrust
6	121-1012-03	1	Plate-Wheel, Cutter	24	98-4871	2	Bushing-Tension
7	104-5915	1	Washer-Lock, Bearing	25	121-1112	1	Pin-Pivot, Grinder
8	104-1973	1	Nut-Lock, Bearing	26	323-47	1	Screw-HH
9	121-4325	1	HYD Motor ASM	27	3290-357	1	Nut-HHF, Whiz
10	115-9384	12	Pocket-Angled	28	99-5105	4	Bolt-Shoulder
11	115-9388	4	Pocket-Straight	29	302-5	6	Fitting-Grease
12	121-4318	16	Bolt-HSH	30	121-4449	2	Shield-Rubber
13	115-9385	16	Grinder Tooth ASM	31	121-4332-03	2	Strap-Retainer
13:1	3296-39	1	Nut-Lock, NI	32	121-4333-03	2	Strap-Retainer
13:2	121-4365	1	Spacer-Tooth	33	322-6	16	Screw-HH
14	3234-6	2	Screw-HHF	34	3296-29	16	Nut-Lock, NI
				35	325-5	6	Screw-HH



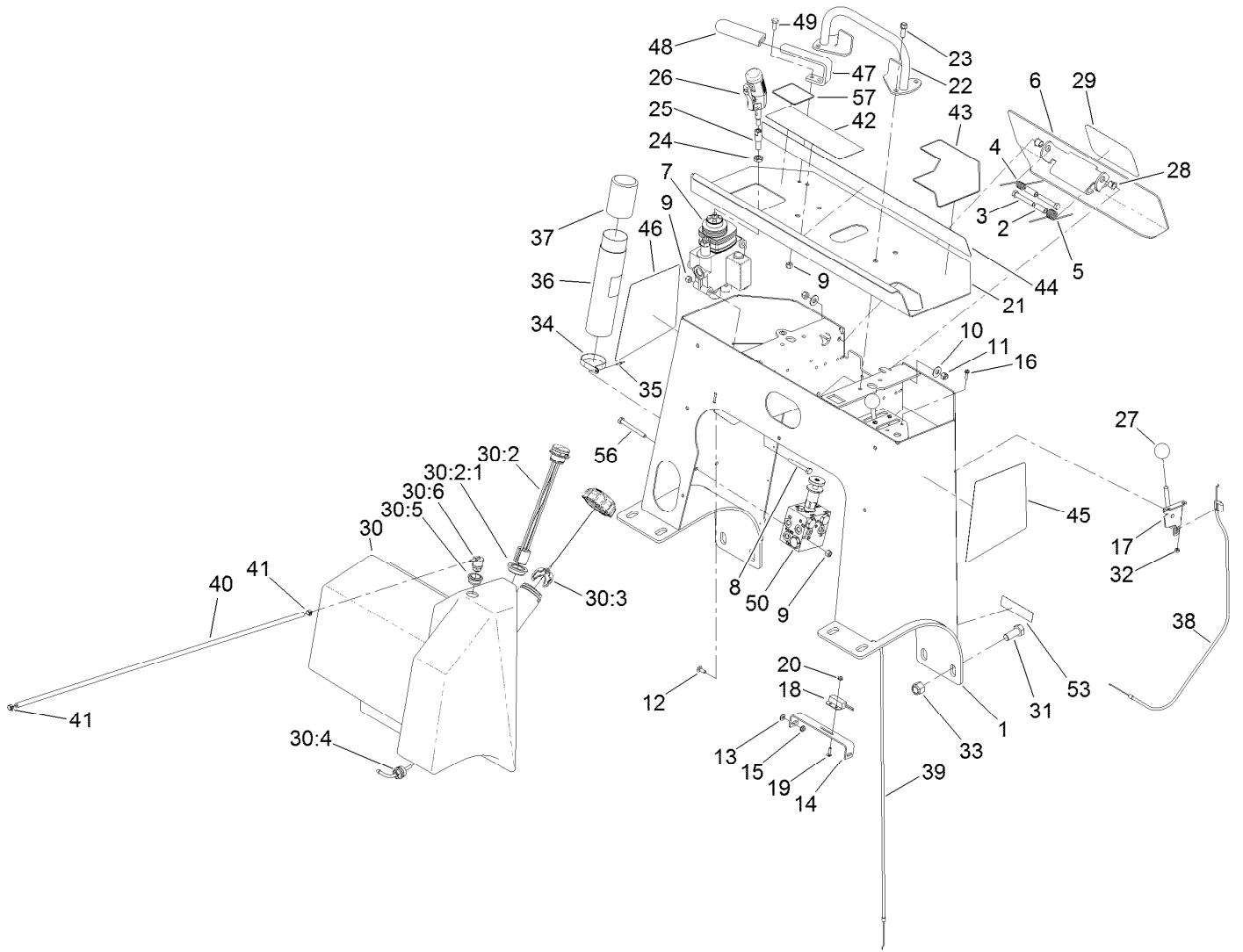
Cutter Head Assembly (continued)

<i>Ref.</i>	<i>Part Number</i>	<i>Qty.</i>	<i>Description</i>	<i>Ref.</i>	<i>Part Number</i>	<i>Qty.</i>	<i>Description</i>
36	302-34	1	Fitting-Lube	43	75-9180	1	Washer-Rubber
37	121-0875	1	Plug-Shaft, Cutter	45	104-3989	2	Decal
38	121-1955	1	HYD Cylinder ASM	46	93-7321	2	Decal-Danger
41	302-11	1	Fitting-Lube, 45 DEG	47	107-9366	1	Decal-Warning
42	104-0015	2	Bushing-Flange				



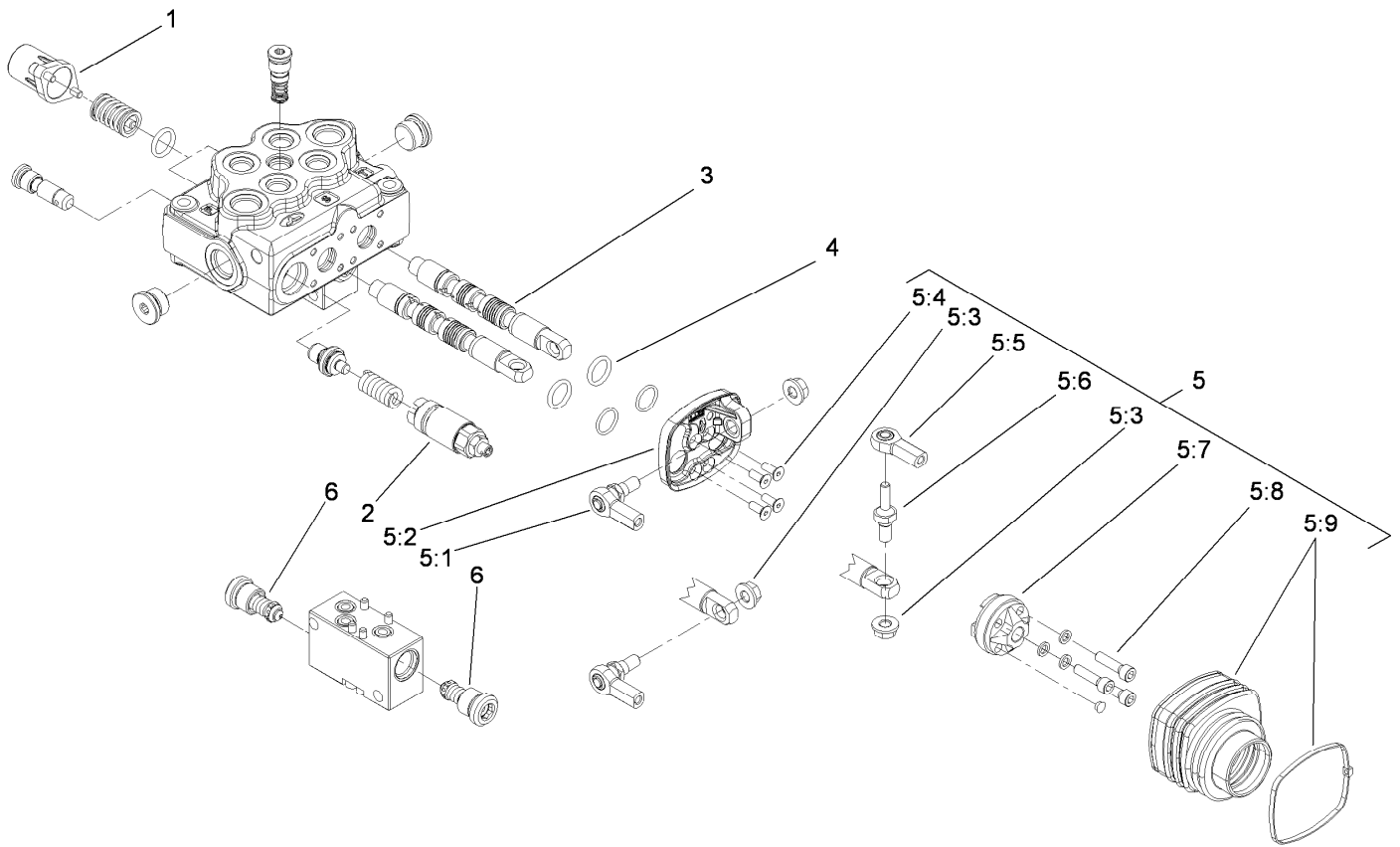
Tower Assembly

Ref.	Part Number	Qty.	Description	Ref.	Part Number	Qty.	Description
1	121-1150-01	1	Tower	22	106-7715	1	Bar-Reference
2	114-1337	2	Spacer-Spring	23	95-1726	4	Screw-Taptite
3	323-11	2	Screw-HH	24	51-2070	1	Nut
4	98-8425	1	Spring-Torsion, LH	25	119-5103	1	Adapter-Handle
5	98-8424	1	Spring-Torsion, RH	26	119-4587	1	Two Button Handle Grip ASM
6	121-1110-03	1	Plate-Backup	27	233-42	2	Knob
7	119-4585	1	HYD Valve ASM	28	256-257	2	Bushing-Nyliner
8	322-12	3	Screw-HH	29	105-1217	1	Decal
9	3296-29	7	Nut-Lock, NI	30	121-4350	1	Fuel Tank ASM
10	3256-4	2	Washer-Flat	30:2	117-8362	1	Guage-Fuel
11	3296-39	2	Nut-Lock, NI	30:2:1	117-8403	1	Seal
12	3229-1	2	Bolt-CARR	30:3	115-7788	1	Cap-Fuel
13	3256-22	2	Washer-Flat	30:4	103-2605	1	Fitting-Fuel, Bulkhead
14	100-1263	1	Plate-Switch	30:5	114-0284	1	Grommet
15	32149-2	2	Nut-Keps	30:6	114-0285	1	Valve-Rollover
16	32105-13	4	Screw-HWH	31	327-4	8	Screw-HH
17	108-9730	2	Lever-Control	32	3296-2	4	Nut-Lock, NI
18	100-1270	1	Switch-Proximity	33	3296-53	8	Nut-Lock, NI
19	3229-20	2	Screw-CARR	34	2412-120	2	Clamp-R
20	32149-7	2	Nut-Keps	35	3269-17	2	Rivet-Pop
21	121-4534	1	Cover-Control				



Tower Assembly (continued)

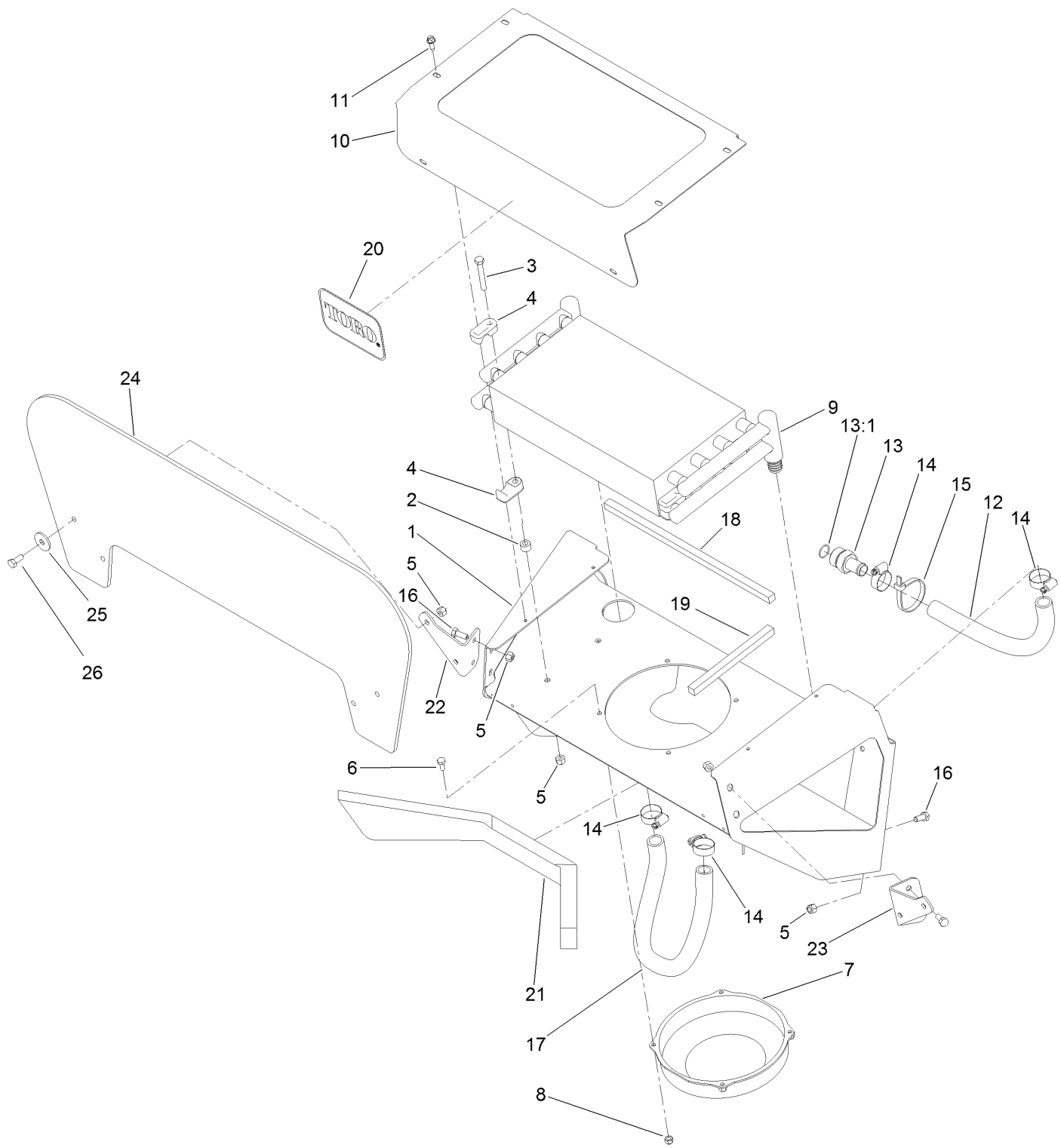
<i>Ref.</i>	<i>Part Number</i>	<i>Qty.</i>	<i>Description</i>	<i>Ref.</i>	<i>Part Number</i>	<i>Qty.</i>	<i>Description</i>
36	104-7050	1	Tube-Manual	45	121-4383	1	Decal-Logo, LH
37	104-7048	1	Cap-Housing	46	121-4384	1	Decal-Logo, RH
38	115-1211	1	Cable-Control	47	125-3570-03	1	Bar-Arm Rest
39	119-6654	1	Cable-Throttle	48	1-633268	1	Grip-Lever
40	119-3517	1	Hose-Fuel	49	322-3	2	Screw-HH
41	2412-146	2	Clamp-Hose	50	121-4466	1	Sweep Manifold ASM
42	119-4606	1	Decal-Warning	53	117-2718	1	Decal-Arrester, Spark
43	121-4381	1	Decal-Console, LH	56	322-14	2	Screw-HH
44	121-4382	1	Decal-Console, RH	57	121-4402	1	Decal-Joystick



Control Valve Assembly No. 119-4585

Ref.	Part Number	Qty.	Description
1	100-8801	2	High Force Spring Kit
2	100-8805	1	Valve-Relief
3	114-8625	2	Valve-Spool
4	106-7719	4	Seal-Valve
5	119-4622	1	Joystick Kit
5:1	119-4623	2	Joint-Joystick
5:2	119-4624	1	Base-Joystick
5:3	117-1350	3	Nut-HF, Lock
5:4	119-4625	4	Screw-Joystick
5:5	119-4626	1	Joint-Joystick
5:6	119-4627	1	Pin-Spool
5:7	119-4628	1	Holder-Joystick
5:8	3273-42	3	Screw-HSH
5:9	119-4629	1	Boot-Joystick
6	119-4630	2	Valve Kit

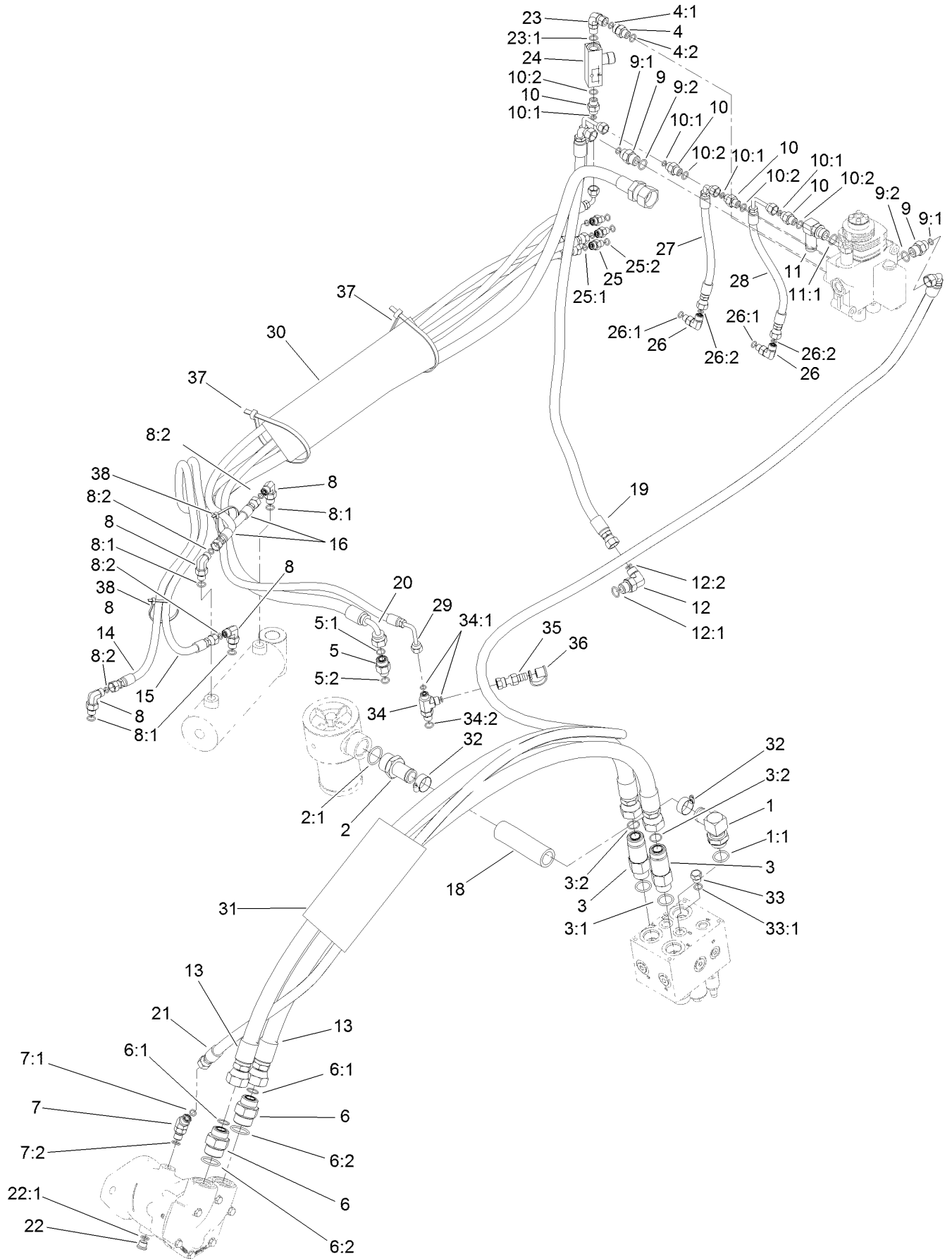
Cooler Assembly



Cooler Assembly (continued)

<i>Ref.</i>	<i>Part Number</i>	<i>Qty.</i>	<i>Description</i>	<i>Ref.</i>	<i>Part Number</i>	<i>Qty.</i>	<i>Description</i>
1	121-1180-01	1	Mount-Cooler	14	2412-129	4	Clamp-Hose
2	98-4695	4	Spacer	15	3334-945	1	Tie-Cable
3	322-11	4	Screw-HH	16	322-3	8	Screw-HH
4	105-3943	8	Clamp-Cooler, Oil	17	125-0266	1	Hose-Return
5	3296-29	16	Nut-Lock, NI	18	125-0319	2	Foam-Seal
6	321-3	4	Screw-HH	19	125-0324	2	Foam-Seal
7	120-7390	1	Fan	20	104-3989	1	Decal
8	3296-42	4	Nut-Lock, NI	21	125-0316	1	Foam-Seal
9	117-6320	1	Cooler-Oil	22	125-0350-01	1	Bracket-Shield, RH
10	125-0308-01	1	Cover-Cooler	23	125-0351-01	1	Bracket-Shield, LH
11	32104-95	6	Screw-HWH	24	125-0340	1	Shield-Chip
12	121-4537	1	Hose-HYD	25	63-8410	4	Washer
13	107-8652	1	Fitting-Straight	26	322-4	4	Screw-HH
13:1	237-58	1	O-Ring				

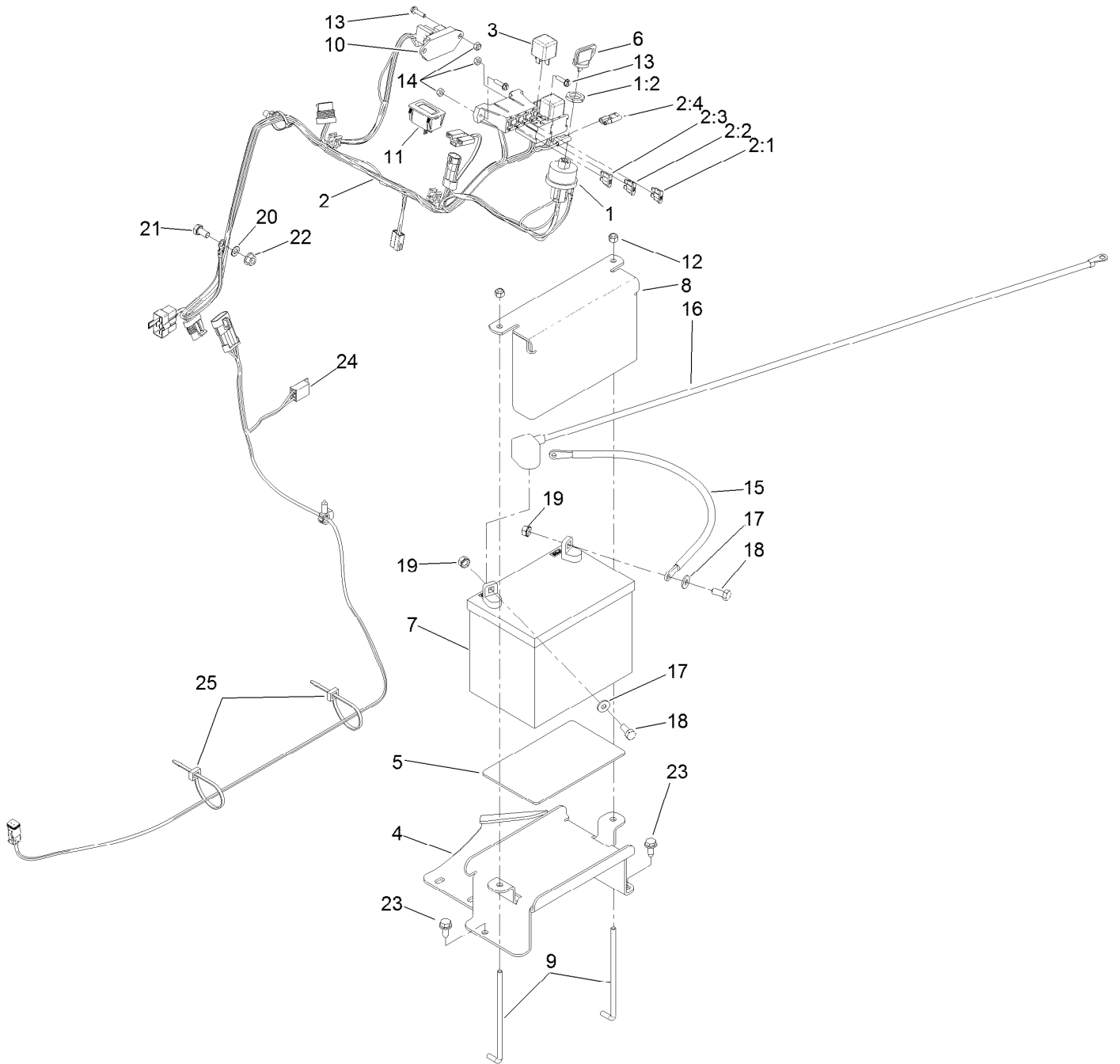
Hydraulic Routing Assembly



Hydraulic Routing Assembly (continued)

<i>Ref.</i>	<i>Part Number</i>	<i>Qty.</i>	<i>Description</i>	<i>Ref.</i>	<i>Part Number</i>	<i>Qty.</i>	<i>Description</i>
1	100-4202	1	Fitting-HYD, 90 DEG	14	121-4345	1	Hose-HYD
1:1	237-81	1	O-Ring	15	121-4346	1	Hose-HYD
2	354-78	1	Connector-Hose	16	121-4347	2	Hose-HYD
2:1	237-146	1	O-Ring	18	121-4341	1	Hose-Return
3	92-6058	2	Fitting-HYD	19	121-1199	1	Hose-HYD
3:1	237-81	1	O-Ring	20	121-4344	1	Hose-HYD
3:2	237-58	1	O-Ring	21	121-4343	1	Hose-HYD
4	340-2	1	Fitting-HYD, Straight	22	353-989	1	Plug-Hex, Hollow
4:1	237-22	1	O-Ring	22:1	237-42	1	O-Ring
4:2	237-42	1	O-Ring	23	340-110	1	Fitting-Swivel, 90 DEG
5	340-5	1	Fitting-Straight	23:1	237-42	1	O-Ring
5:1	237-42	1	O-Ring	24	98-9742	1	Valve-Control, Flow
5:2	237-30	1	O-Ring	25	340-92	3	Fitting-HYD, Straight
6	340-91	2	Adapter	25:1	237-78	1	O-Ring
6:1	237-58	1	O-Ring	25:2	237-21	1	O-Ring
6:2	237-146	1	O-Ring	26	340-132	2	Fitting-HYD, 90 DEG
7	340-87	1	Fitting-HYD, 45 DEG	26:1	237-78	1	O-Ring
7:1	237-22	1	O-Ring	26:2	237-21	1	O-Ring
7:2	237-42	1	O-Ring	27	121-4455	1	Hose-HYD
8	340-82	4	Adapter	28	121-4456	1	Hose-HYD
8:1	237-42	1	O-Ring	29	119-4601	1	Hose-HYD
8:2	237-21	1	O-Ring	30	121-4454	1	Sleeve-Protective
9	340-3	2	Adapter	31	99-5648	1	Sleeve-Protective
9:1	237-22	1	O-Ring	32	2412-34	2	Clamp-Hose
9:2	237-79	1	O-Ring	33	353-508	1	Plug-HH
10	340-1	4	Fitting-HYD, Straight	33:1	237-42	1	O-Ring
10:1	237-21	1	O-Ring	34	108-5688	1	Fitting-Tee
10:2	237-42	1	O-Ring	34:1	237-21	2	O-Ring
11	353-954	1	Adapter	34:2	237-42	1	O-Ring
11:1	237-79	1	O-Ring	35	115-8886	1	Nipple-Test
12	340-18	1	Fitting-HYD, 90 DEG	36	354-79	1	Cap-Dust
12:1	237-79	1	O-Ring	37	3334-945	2	Tie-Cable
12:2	237-22	1	O-Ring	38	3290-379	2	Tie-Cable
13	121-4342	2	Hose-HYD				

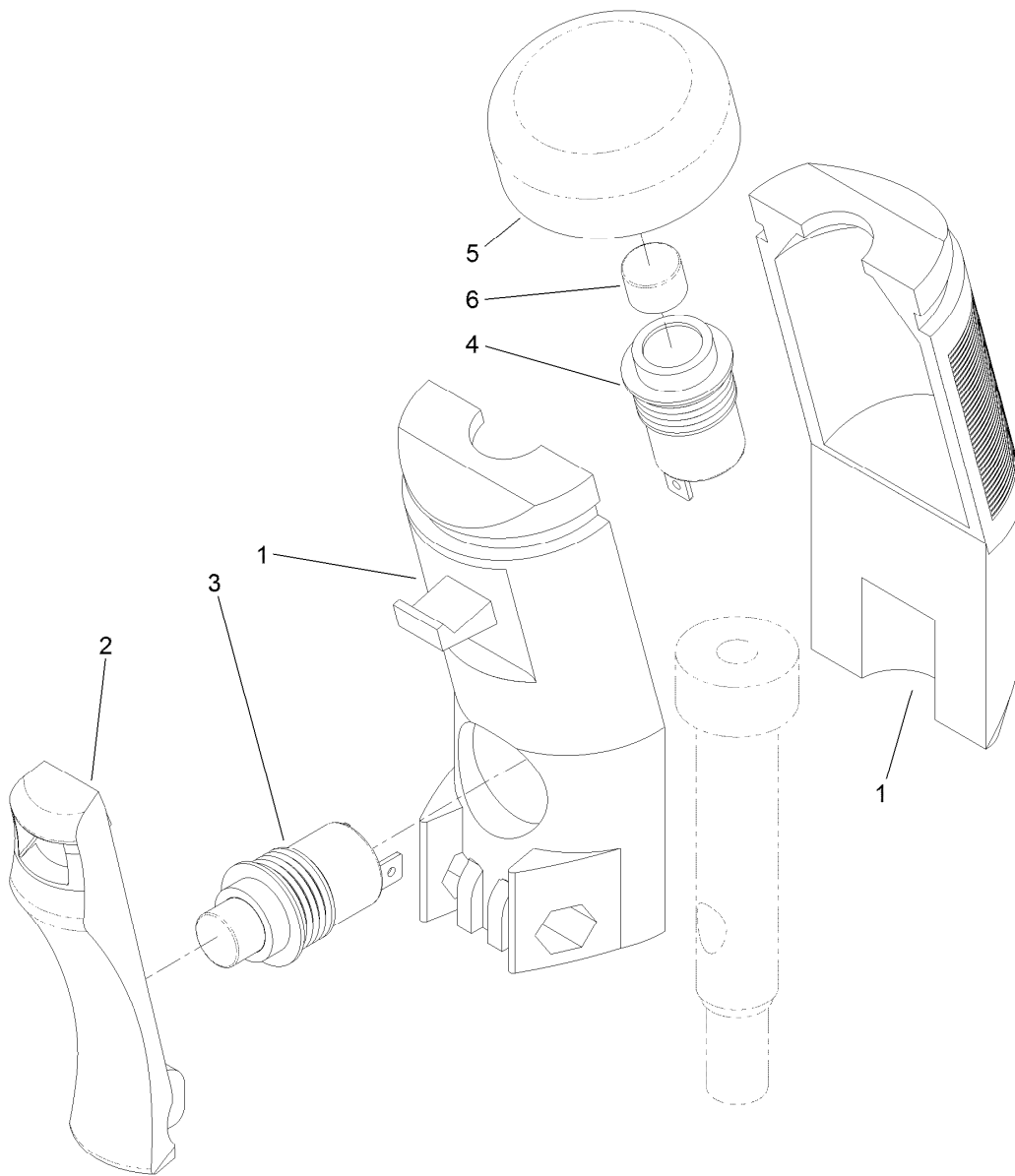
Electrical Assembly



Electrical Assembly (continued)

<i>Ref.</i>	<i>Part Number</i>	<i>Qty.</i>	<i>Description</i>	<i>Ref.</i>	<i>Part Number</i>	<i>Qty.</i>	<i>Description</i>
1	88-9830	1	Key Switch ASM	10	100-6170	1	Module-Delay
1:1	3254-5	1	Washer-Tooth, Internal (Not Used In This Application) ●	11	120-2244	1	Hourmeter
1:2	218-461	1	Nut-HH	12	3296-42	2	Nut-Lock, NI
2	121-4315	1	Harness-Wire	13	32105-13	5	Screw-HWH
2:1	109103	1	Fuse-Blade, 30 Amp	14	3296-2	5	Nut-Lock, NI
2:2	109102	1	Fuse-Blade, 25 Amp	15	106-8945	1	Cable-Battery, Positive
2:3	109101	1	Fuse-Blade, 20 Amp	16	121-4437	1	Cable-Battery, Negative
2:4	116-0053	1	Cap-Plug	17	3256-2	2	Washer-Flat
3	98-7249	2	Relay	18	322-3	2	Screw-HH
4	125-0322-01	1	Tray-Battery	19	32149-1	2	Nut-Keps
5	62-4300	1	Pad-Skid, Anti	20	3255-8	1	Washer-Lock
6	63-8360	1	Key-Ignition (W/Shield)	21	33114-016	1	Screw-HH
7	104-4657	1	Battery	22	33004-00	1	Nut-HF
8	115-6621-03	1	Plate-Hold Down, Battery	23	32144-70	2	Screw-HWHTF
9	104-8567	2	Holdown-Battery	24	121-4319	1	Harness-Wire
				25	3290-378	2	Tie-Cable

● Not illustrated



Two-Button Handle Grip Assembly No. 119-4587

<i>Ref.</i>	<i>Part Number</i>	<i>Qty.</i>	<i>Description</i>
1	119-4637	1	Halve-Handle
2	119-4638	1	Lever-Handle
3	119-4639	1	Button-Push, Lever
4	119-4640	1	Button-Push, Top
5	119-4641	1	Boot-Button
6	119-4642	1	Button-Actuator

Notes:

Notes:

Notes:



Count on it.