

PARTS MANUAL



MODEL DAW500SA4 WELDER/GENERATOR (KUBOTA D1803-CR DIESEL ENGINE)

Revision #0 (04/13/22)



THIS MANUAL MUST ACCOMPANY THE EQUIPMENT AT ALL TIMES.

PARTS FINDER

**Search Website
by Part Number**



**Search Manual
Library For Parts
Manual & Lookup Part
Numbers – Purchase
or Request Quote**

Search Manuals

Enter your information to help us find the right parts manual for your equipment.

* Brand:

* Model:

* Serial:

* Part Number:

SEARCH

**Can't Find Part or
Manual? Request Help
by Manufacturer,
Model & Description**

Parts Order Form

Please fill in the following information to help us find the right part for your equipment.

Manufacturer:	<input type="text"/>
Model:	<input type="text"/>
Description:	<input type="text"/>
Part Number:	<input type="text"/>
Quantity:	<input type="text"/>
Notes:	<input type="text"/>

Submit

Discount-Equipment.com is your online resource for quality parts & equipment.

Florida: **561-964-4949** Outside Florida TOLL FREE: **877-690-3101**

Need parts?

Click on this link: <http://www.discount-equipment.com/category/5443-parts/> and choose one of the options to help get the right parts and equipment you are looking for. Please have the machine model and serial number available in order to help us get you the correct parts. If you don't find the part on the website or on one of the online manuals, please fill out the request form and one of our experienced staff members will get back to you with a quote for the right part that your machine needs.

We sell worldwide for the brands: Genie, Terex, JLG, MultiQuip, Mikasa, Essick, Whiteman, Mayco, Toro Stone, Diamond Products, Generac Magnum, Airman, Haulotte, Barreto, Power Blanket, Nifty Lift, Atlas Copco, Chicago Pneumatic, Allmand, Miller Curber, Skyjack, Lull, Skytrak, Tsurumi, Husquvarna Target, Stow, Wacker, Sakai, Mi-T-M, Sullair, Basic, Dynapac, MBW, Weber, Bartell, Bennar Newman, Haulotte, Ditch Runner, Menegotti, Morrison, Contec, Buddy, Crown, Edco, Wyco, Bomag, Laymor, EZ Trench, Bil-Jax, F.S. Curtis, Gehl Pavers, Heli, Honda, ICS/PowerGrit, IHI, Partner, Imer, Clipper, MMD, Koshin, Rice, CH&E, General Equipment, Amida, Coleman, NAC, Gradall, Square Shooter, Kent, Stanley, Tamco, Toku, Hatz, Kohler, Robin, Wisconsin, Northrock, Oztec, Toker TK, Rol-Air, APT, Wylie, Ingersoll Rand / Doosan, Innovatech, Con X, Ammann, Mecalac, Makinex, Smith Surface Prep, Small Line, Wanco, Yanmar

TABLE OF CONTENTS

DAW500SA4 Welder-Generator

Explanation Of Code In Remarks Column.....	4
Suggested Spare Parts	5

Component Drawings

Generator Assembly.....	6-7
Control Panel Assembly	8-11
Electric Parts 1 Assembly.....	12-13
Electric Parts 2 Assembly.....	14-15
Engine And Radiator Assembly.....	16-19
Battery Assembly.....	20-21
Muffler Assembly	22-23
Fuel Tank Assembly.....	24-25
Enclosure Assembly	26-29
Rubber Seals Assembly	30-31
Nameplate And Decals Assembly	32-33

NOTICE

Specifications and part numbers are subject to change without notice.

EXPLANATION OF CODE IN REMARKS COLUMN

The following section explains the different symbols and remarks used in the Parts section of this manual. Use the help numbers found on the back page of the manual if there are any questions.

NOTICE

The contents and part numbers listed in the parts section are subject to change **without notice**. Multiquip does not guarantee the availability of the parts listed.

SAMPLE PARTS LIST

NO.	PART NO.	PART NAME	QTY.	REMARKS
1	12345	BOLT	1	INCLUDES ITEMS W/%
2%		WASHER, 1/4 IN.		NOT SOLD SEPARATELY
2%	12347	WASHER, 3/8 IN. ...	1	MQ-45T ONLY
3	12348	HOSE	A/R	MAKE LOCALLY
4	12349	BEARING	1	S/N 2345B AND ABOVE

NO. Column

Unique Symbols — All items with same unique symbol (@, #, +, %, or >) in the number column belong to the same assembly or kit, which is indicated by a note in the “Remarks” column.

Duplicate Item Numbers — Duplicate numbers indicate multiple part numbers, which are in effect for the same general item, such as different size saw blade guards in use or a part that has been updated on newer versions of the same machine.

NOTICE

When ordering a part that has more than one item number listed, check the remarks column for help in determining the proper part to order.

PART NO. Column

Numbers Used — Part numbers can be indicated by a number, a blank entry, or TBD.

TBD (To Be Determined) is generally used to show a part that has not been assigned a formal part number at the time of publication.

A blank entry generally indicates that the item is not sold separately or is not sold by Multiquip. Other entries will be clarified in the “Remarks” Column.

QTY. Column

Numbers Used — Item quantity can be indicated by a number, a blank entry, or A/R.

A/R (As Required) is generally used for hoses or other parts that are sold in bulk and cut to length.

A blank entry generally indicates that the item is not sold separately. Other entries will be clarified in the “Remarks” Column.

REMARKS Column

Some of the most common notes found in the “Remarks” Column are listed below. Other additional notes needed to describe the item can also be shown.

Assembly/Kit — All items on the parts list with the same unique symbol will be included when this item is purchased.

Indicated by:

“INCLUDES ITEMS W/(unique symbol)”

Serial Number Break — Used to list an effective serial number range where a particular part is used.

Indicated by:

“S/N XXXXX AND BELOW”

“S/N XXXX AND ABOVE”

“S/N XXXX TO S/N XXX”

Specific Model Number Use — Indicates that the part is used only with the specific model number or model number variant listed. It can also be used to show a part is NOT used on a specific model or model number variant.

Indicated by:

“XXXXX ONLY”

“NOT USED ON XXXX”

“Make/Obtain Locally” — Indicates that the part can be purchased at any hardware shop or made out of available items. Examples include battery cables, shims, and certain washers and nuts.

“Not Sold Separately” — Indicates that an item cannot be purchased as a separate item and is either part of an assembly/kit that can be purchased, or is not available for sale through Multiquip.

SUGGESTED SPARE PARTS

DAW500SA4 WELDER/GENERATOR

1 to 3 units

Qty.	P/N	Description
6.....	1J80043172.....	CARTRIDGE, FUEL FILTER
1.....	0601808803.....	CIRCUIT BREAKER, 1P 20A
1.....	0601840214.....	RHEOSTAT
1.....	0601840103.....	KNOB
5.....	0601806642.....	FUSE, 5A
5.....	Y0601806647.....	FUSE, 25A
5.....	Y0601872530.....	FUSE, 45A
5.....	0601806640.....	FUSE, 65A

NOTICE

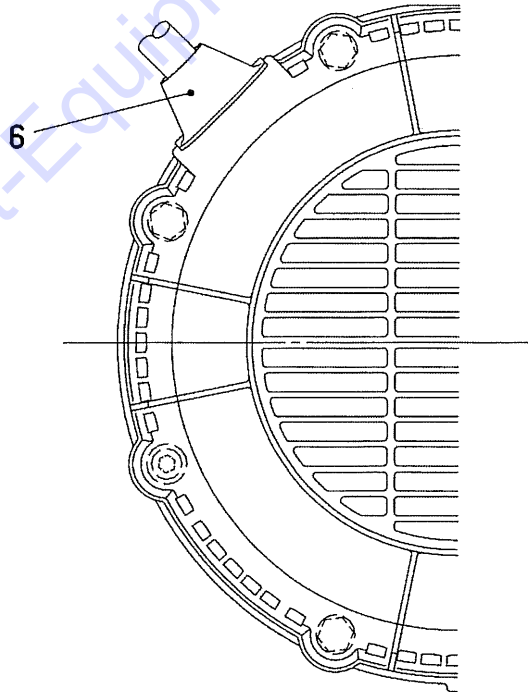
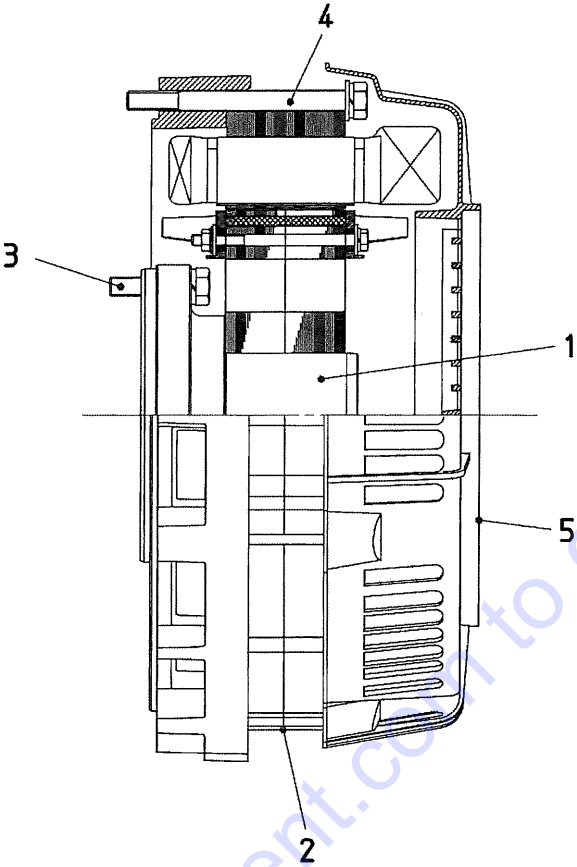
Part numbers on this Suggested Spare Parts list may supersede/replace the part numbers shown in the following parts lists.

KUBOTA D1803-CR DIESEL ENGINE

1 to 3 units

Qty.	P/N	Description
5.....	1641432434.....	CARTRIDGE, OIL FILTER
1.....	D6311500003.....	HOSE, RADIATOR UPPER
1.....	D4311500103.....	HOSE, RADIATOR LOWER
1.....	Y0602015700.....	CAP, RADIATOR
1.....	A9924800024.....	CAP, FUEL TANK
6.....	1J43043060.....	ELEMENT
3.....	Y0602046335.....	ELEMENT, AIR CLEANER
1.....	1711297012.....	FAN BELT
1.....	1584139010.....	SWITCH, OIL
4.....	1685165512.....	GLOW PLUG
2.....	1753883040.....	SWITCH, THERMO.

GENERATOR ASSY.

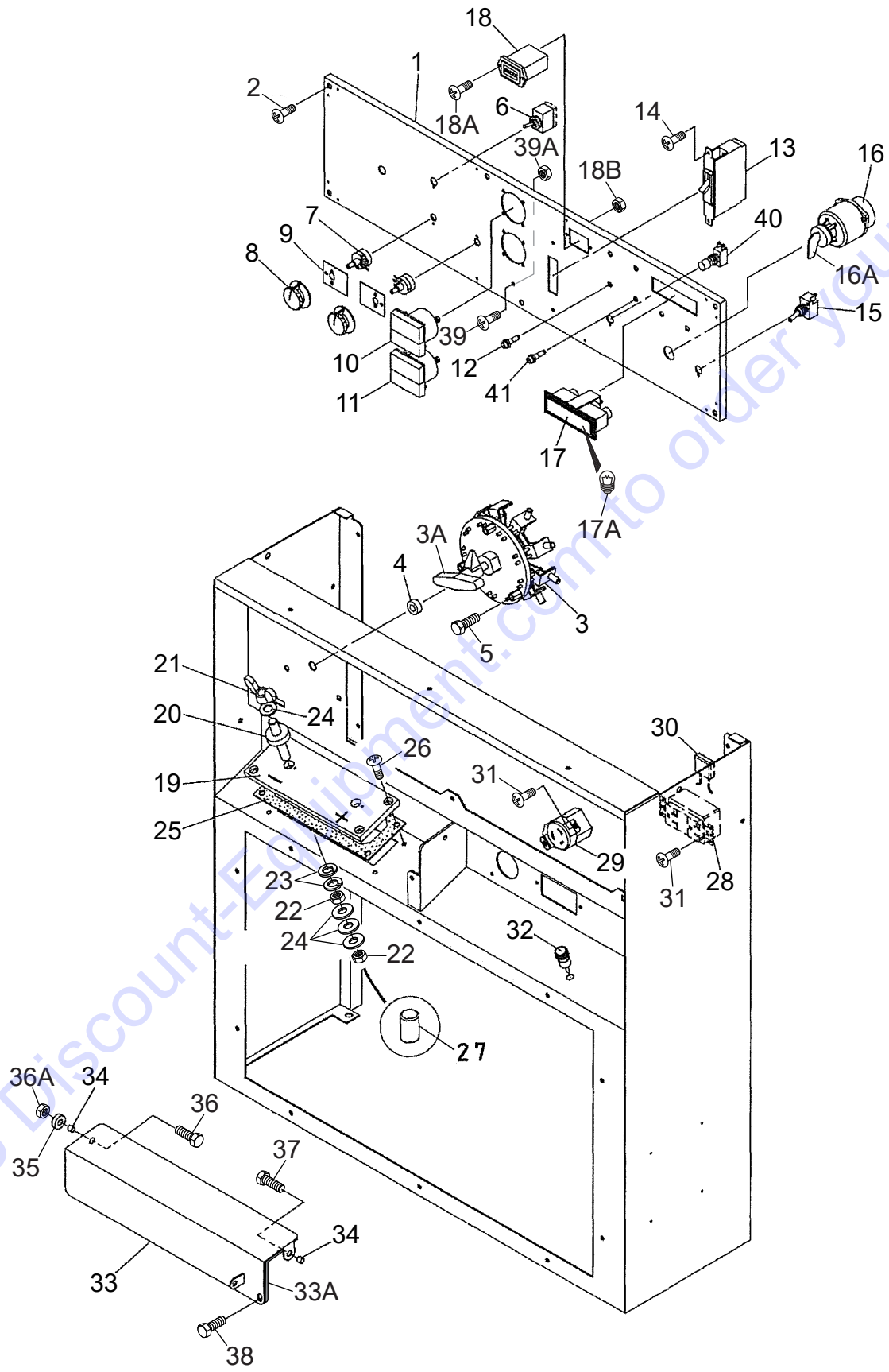


GENERATOR ASSY.

<u>NO.</u>	<u>PART NO.</u>	<u>PART NAME</u>	<u>QTY.</u>	<u>REMARKS</u>
1		ROTOR ARMATURE ASSY.....	1.....	INCLUDES ITEMS W/#
1A#	D06110000202	ROTOR ASSY.	1	
2#	D06130100303	STATOR ASSY.	1	
3	Y0349710045	HEX. HEAD BOLT	6	
4	Y0349910120	HEX. HEAD BOLT	6	
5	D06153400102	COVER	1	
6	D6153300113	GROMMET	2	

Go to Discount-Equipment.com to order your parts

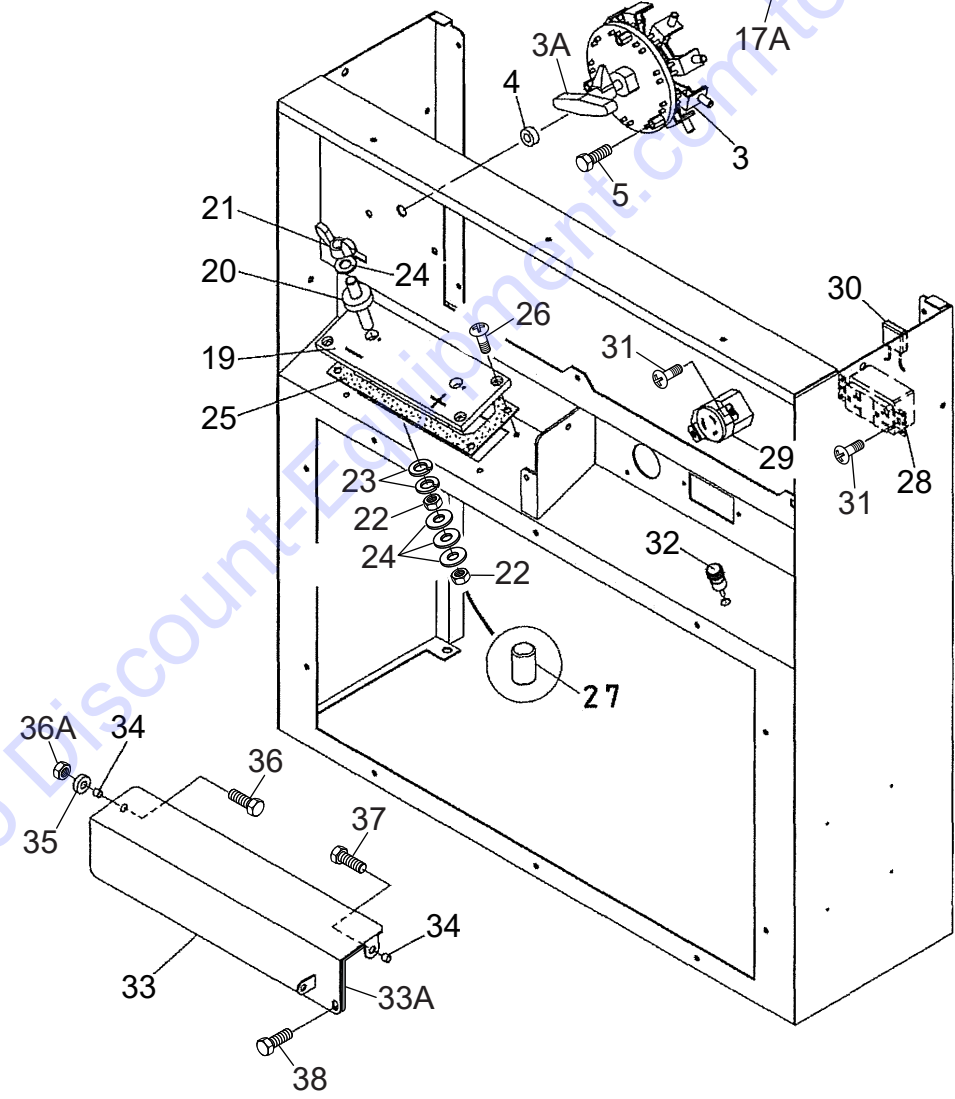
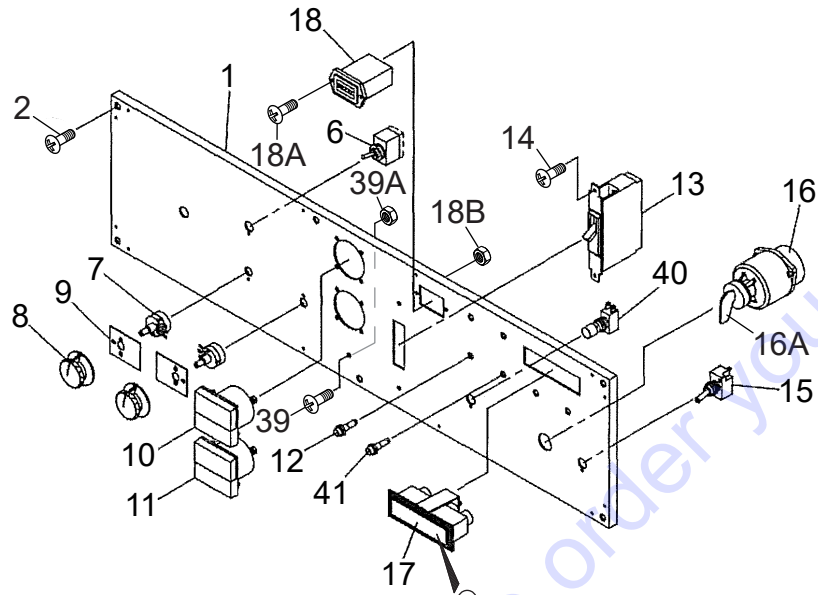
CONTROL PANEL ASSY.



CONTROL PANEL ASSY.

<u>NO.</u>	<u>PART NO.</u>	<u>PART NAME</u>	<u>QTY.</u>	<u>REMARKS</u>
1	D6511201802	CONTROL PANEL	1	
2	0021506030	MACHINE SCREW	6.....	REPLACES P/N 0021806030
3	0601803071	WELDING MAIN SELECTOR	1	
3A	0601803118	HANDLE	1	
4	8705945004	SEAL	1	
5	0016906015	HEX. HEAD BOLT	3	
6	0601831336	WELDING SUB SELECTOR	1	
7	0601840214	RHEOSTAT	2	
8	0601840103	KNOB	2	
9	0801883003	INSULATOR	2	
10	0601800387	DC VOLTMETER, 0~100V	1	
11	0601800179	DC AMMETER, 0~750A/6MA	1	
12	Y0601814415	WARNING LAMP, DC12V 0/0	5	
13	0601808803	CIRCUIT BREAKER, 1P 20A	1	
14	0027404010	MACHINE SCREW	2	
14A	OEMAA8	HEX. NUT	2.....	REPLACES P/N 0207004000
15	0601830771	IDLE CONTROL SWITCH	1	
16	1742263590	STARTER SWITCH	1.....	REPLACES P/N Y0602100057
16A	1742263701	KEY.....	2.....	REPLACES P/N Y0602100223
17	0601810523	WARNING LAMP UNIT	1	
17A	0601810830	BULB	4	
18	0601800682	HOUR METER	1	
18A	0027403010	MACHINE SCREW	2	
18B	0207003000	HEX. NUT	2	
19	D6235400014	SET BOARD, OUTPUT TERMINAL	1	
20	D6235100004	OUTPUT TERMINAL, WELDING	2	
21	022910220	WING NUT, M12	2.....	REPLACES P/N 0801884004
22	0039312000	HEX. NUT	4.....	REPLACES P/N 0039512000
23	0040012000	WASHER, LOCK	4	
24	0041412000	WASHER, FLAT	8	
25	D6235500214	RUBBER SEAL	1	
26	Y0027406015	MACHINE SCREW	4	
27	0601825115	SURGE FILTER	1	
28	Y0601814034	RECEPTACLE, CON1 5-20R GF20LA (GFCI) ..	1.....	REPLACES P/N 0601814013
29	0601812592	RECEPTACLE, CON2 L5-20R	1	
30	0601826150	CONDENSER, C3	1	
31	0027104015	MACHINE SCREW	4	
31A	OEMAA8	HEX. NUT	4.....	REPLACES P/N 0207004000
32	0601815109	GROUND TERMINAL	1	
33	D6237100204	COVER, OUTPUT TERMINAL	1	
33A	D6238400404	RUBBER SEAL	1	
34	0821800014	COLLAR	2	
35	0805088004	STAY RUBBER	1	
36	011206020	HEX. HEAD BOLT	1.....	REPLACES P/N 0016906020
36A	0176060030	HEX. NUT	1.....	REPLACES P/N 0207006000

CONTROL PANEL ASSY. (CONT'D.)

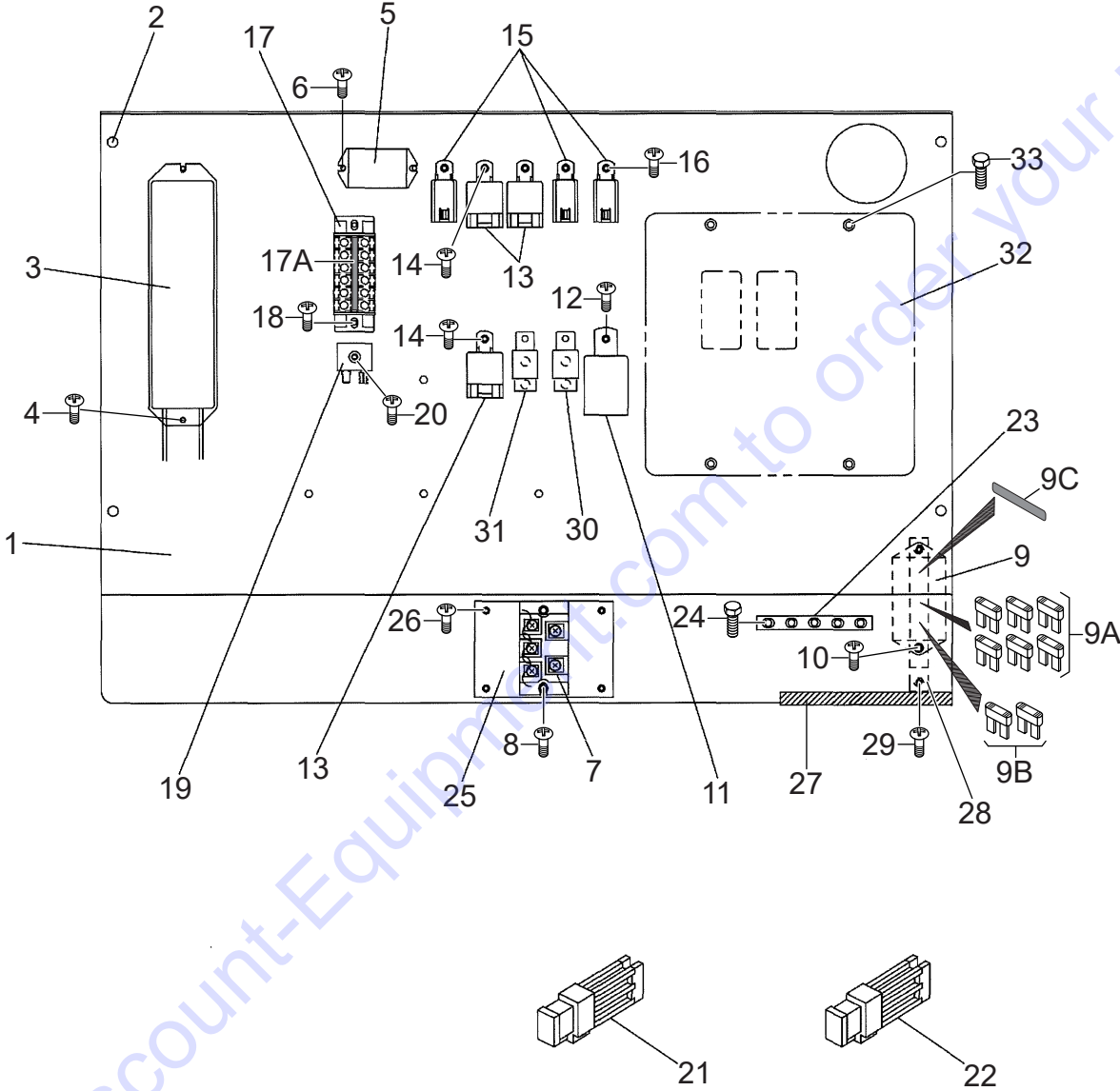


CONTROL PANEL ASSY. (CONT'D.)

<u>NO.</u>	<u>PART NO.</u>	<u>PART NAME</u>	<u>QTY.</u>	<u>REMARKS</u>
37	011206020	HEX. HEAD BOLT	1.....	REPLACES P/N 0016906020
38	0016906015	HEX. HEAD BOLT	1	
39	0021005015	MACHINE SCREW	1	
39A	0030005000	HEX. NUT	2.....	REPLACES P/N 0207005000
40	Y0601831922	SWITCH	1	
41	Y0601814115	PILOT LAMP	1	

Go to Discount-Equipment.com to order your parts

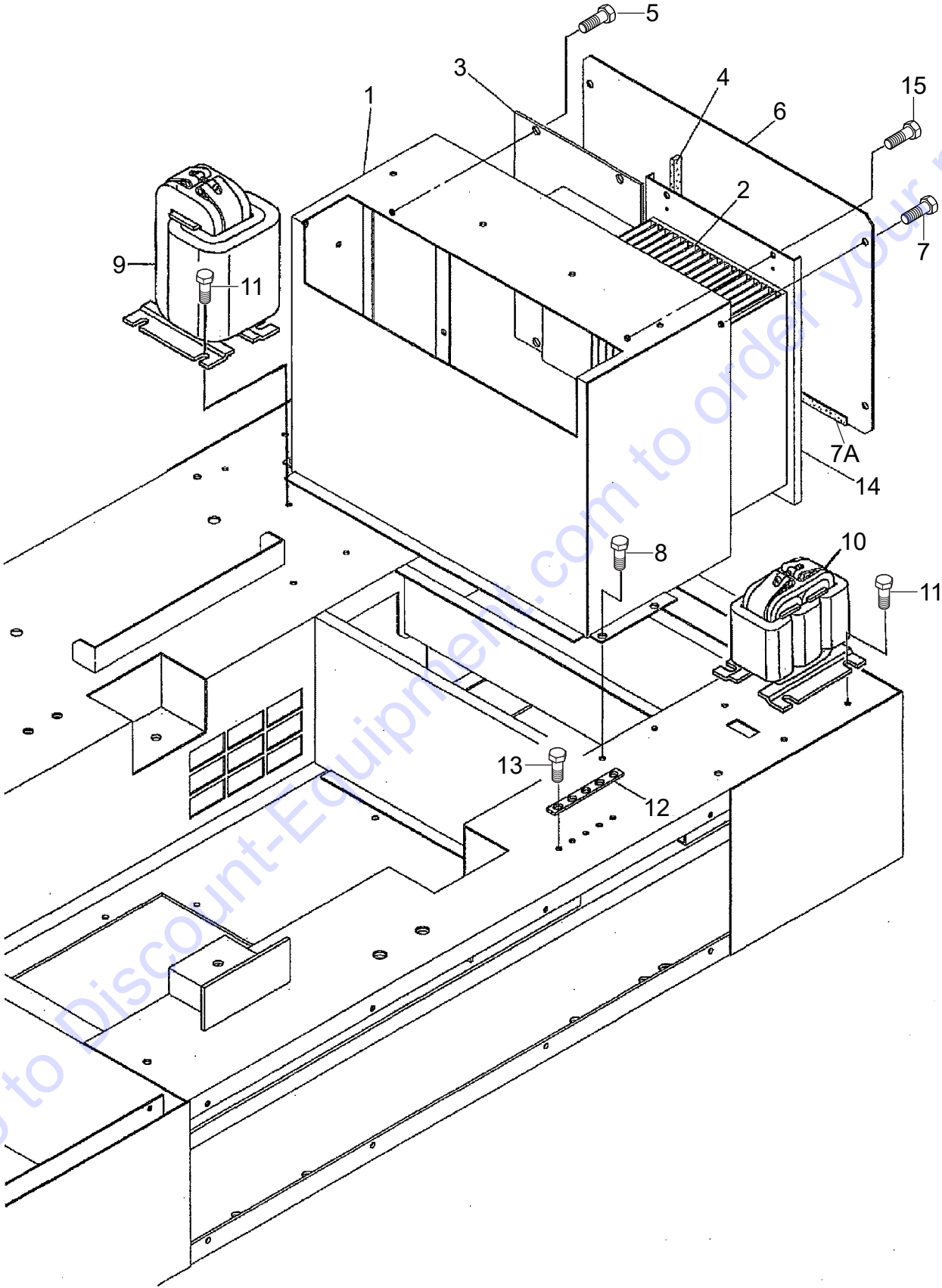
ELECTRIC PARTS 1 ASSY.



ELECTRIC PARTS 1 ASSY.

<u>NO.</u>	<u>PART NO.</u>	<u>PART NAME</u>	<u>QTY.</u>	<u>REMARKS</u>
1	D6261500403	SET PANEL, ELECTRIC PARTS	1	
1A	D6497300003	LINING	1	
1-1	Y0315600800	RUBBER SEAL	1	
2	011808015	MACHINE SCREW	4	REPLACES P/N 0027106015
3	0601842464	RESISTOR	1	
4	0027104015	MACHINE SCREW	2	
5	0601827619	RELAY, 12V	1	
6	0027104015	MACHINE SCREW	2	
7	0601821359	RECTIFIER	1	S/N 5752666 AND BELOW
7	Y0601823238	RECTIFIER	1	S/N 5752667 AND ABOVE
8	0027105015	MACHINE SCREW	2	
9	D6214600604	FUSE BOX	1	INCLUDES ITEMS W/#
9A#	0601806642	FUSE, 5A	6	
9B#	Y0601806647	FUSE, 25A	2	
9C#	D6551001504	DECAL	1	D65100150
10	0027105020	MACHINE SCREW	2	
11	RP42153730	GLOW RELAY	1	REPLACES P/N RP42153731
12	0027104015	MACHINE SCREW	1	
13	0601824527	RELAY, DC12V-N	3	
14	0027104015	MACHINE SCREW	3	
15	0601824525	RELAY, DC12V-N	3	
16	0027104015	MACHINE SCREW	3	
17	0601815759	TERMINAL BOARD	1	
17A	D9521003404	DECAL; SYMBOL MARK	1	D92100340
18	0027104020	MACHINE SCREW	2	
19	0601821370	RECTIFIER, DE45	1	REPLACES P/N 0601823240
20	0027104015	MACHINE SCREW	1	
21	0601806640	FUSE, 65A	1	
22	Y0601872530	FUSE, 45A	1	
23	8511864601A	PLATE	1	REPLACES P/N 8511864604
24	011106015	HEX. HEAD BOLT	5	REPLACES P/N 0017106015
25	D6261600704	PLATE	1	
26	0027105020	MACHINE SCREW	4	
27	Y0226900150	RUBBER SEAL	1	
28	D6261601404	BRACKET, FUSE BOX	1	
29	0027105020	MACHINE SCREW	1	
30	1J42360230	STARTER RELAY	1	REPLACES P/N Y0602202646
31	1J42360230	MAIN RELAY	1	REPLACES P/N Y0602202646
32	Y0602202659	ENGINE CONTROL UNIT	1	
33	011606025	HEX. HEAD BOLT	4	REPLACES P/N 0016906025

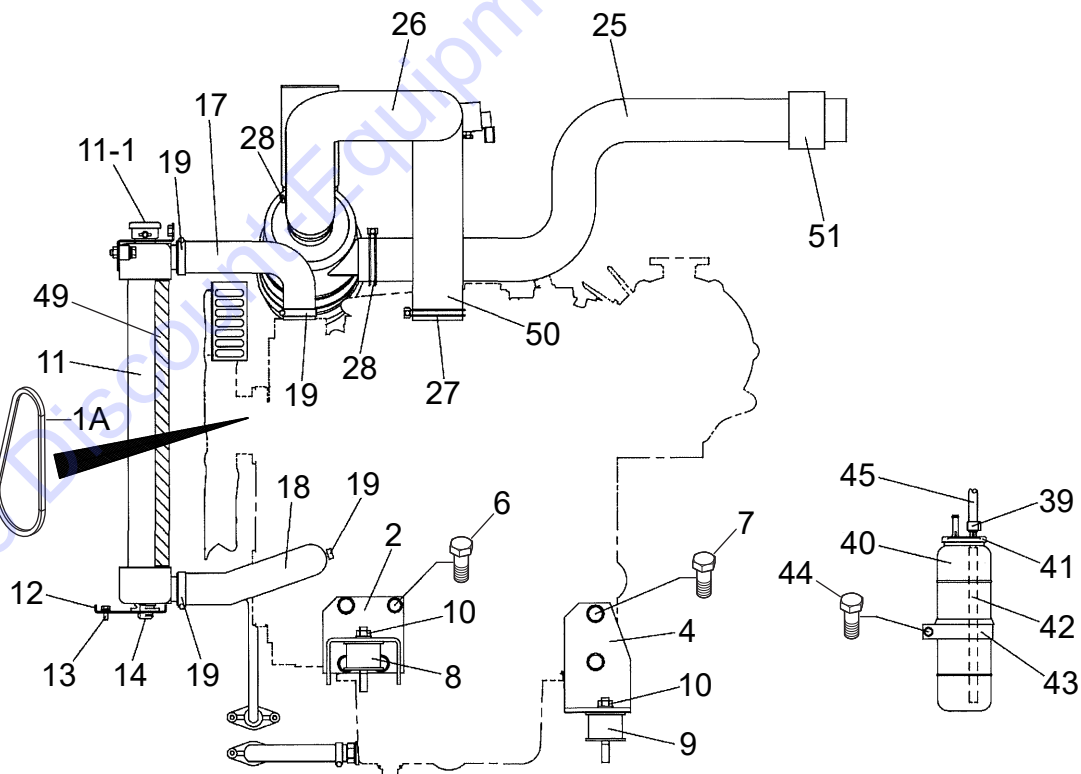
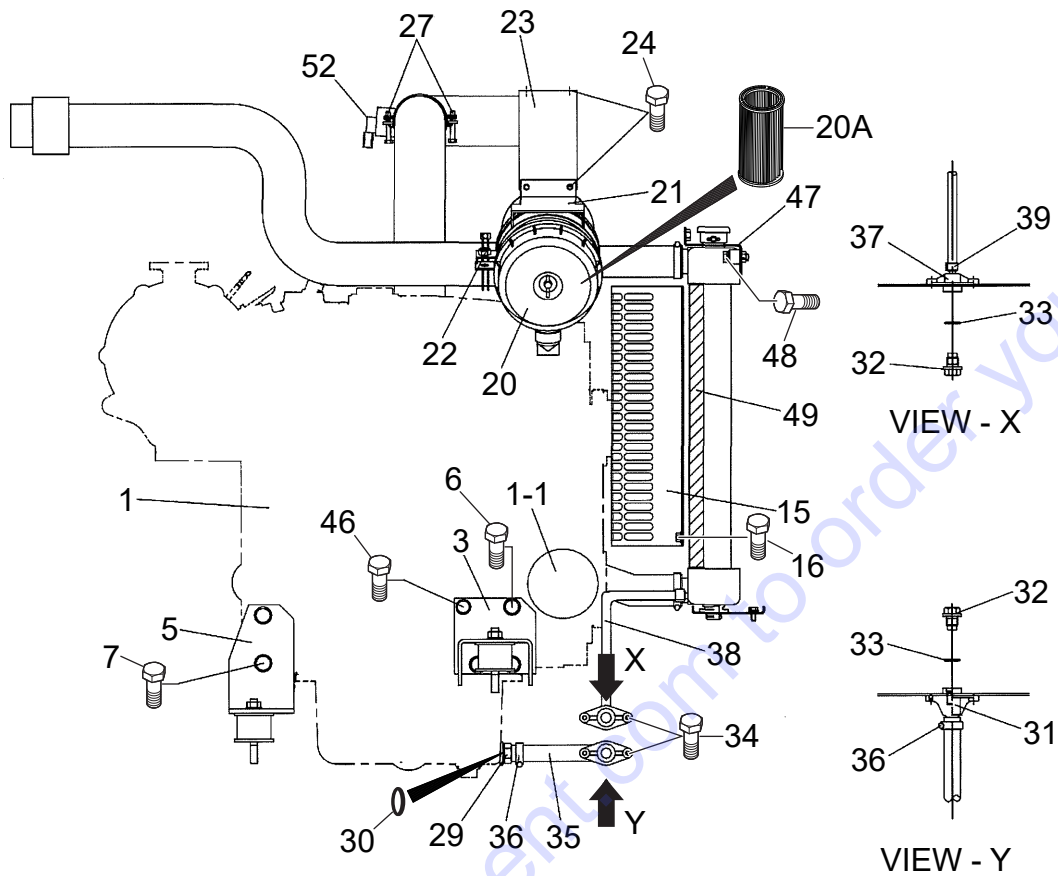
ELECTRIC PARTS 2 ASSY.



ELECTRIC PARTS 2 ASSY.

<u>NO.</u>	<u>PART NO.</u>	<u>PART NAME</u>	<u>QTY.</u>	<u>REMARKS</u>
1	D6214000503	BOX, ELECTRIC PARTS	1	
2	D9924800344	CONTROL UNIT, CA-53	1	
3	D9925800184	CONTROL UNIT, CA-41	1	
4	Y0315500245	RUBBER SEAL	1	
5	011206020	HEX. HEAD BOLT	4	REPLACES P/N 0016906020
6	D6214400004	COVER	1	
7	0017106016	HEX. HEAD BOLT	4	
7A	0226900340	RUBBER SEAL	1	
8	0017106016	HEX. HEAD BOLT	4	
9	D6265500303	DC REACTOR	1	
10	D6265500403	AC REACTOR	1	
11	0017106016	HEX. HEAD BOLT	8	
12	8511864601A	PLATE	1	REPLACES P/N 8511864604
13	0017106016	HEX. HEAD BOLT	5	
14	D6214600403	BRACKET	1	
15	011206020	HEX. HEAD BOLT	4	REPLACES P/N 0016906020

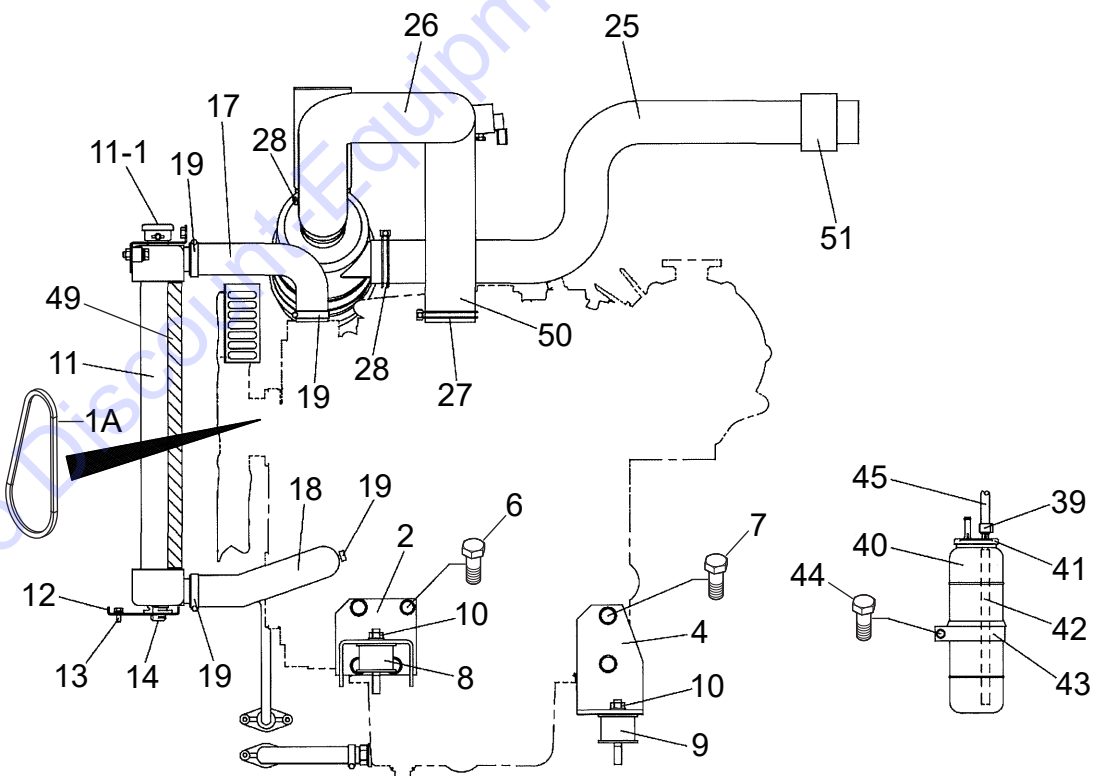
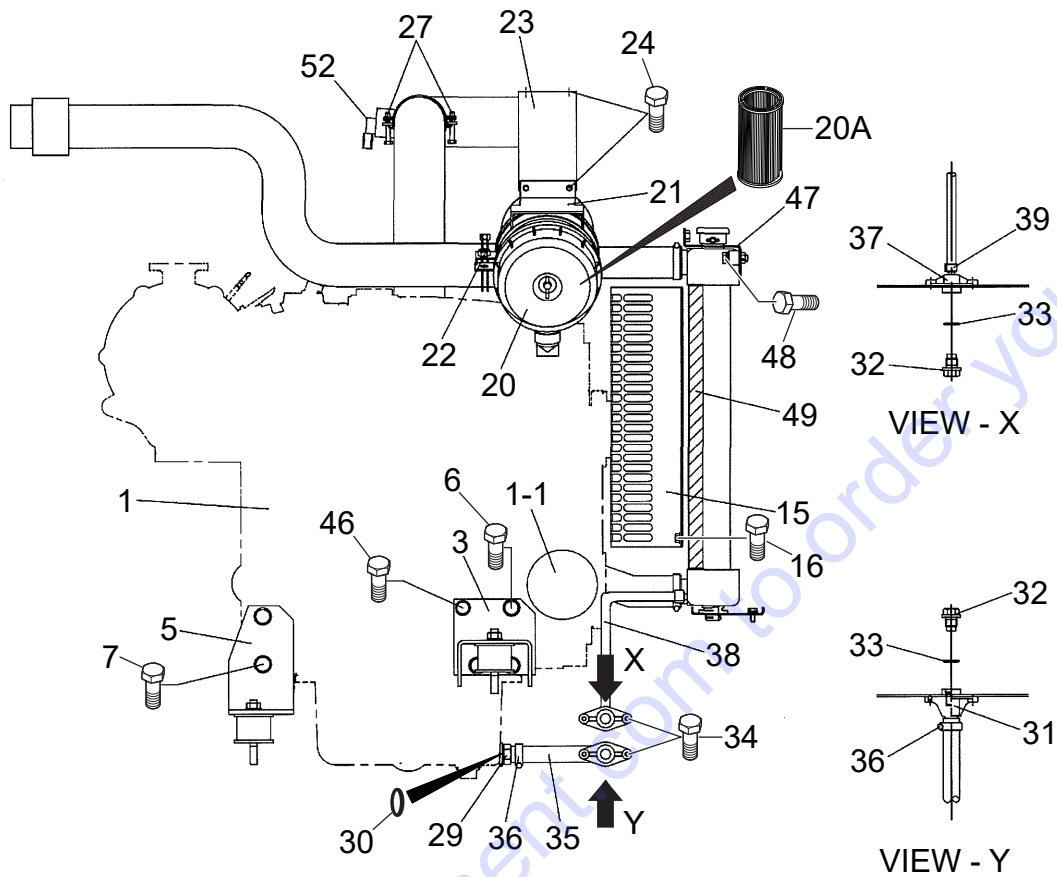
ENGINE AND RADIATOR ASSY.



ENGINE AND RADIATOR ASSY.

<u>NO.</u>	<u>PART NO.</u>	<u>PART NAME</u>	<u>QTY.</u>	<u>REMARKS</u>
1	D6924200054	ENGINE, KUBOTA D1803CR	1	
1A	1711297012	FAN BELT	1	REPLACES P/N Y0602011476
1-1	1641432434	CARTRIDGE, OIL FILTER	1	REPLACES P/N 7000032091
2	D6304200304	ENGINE FOOT	1	
3	D6304200204	ENGINE FOOT	1	
4	D6304200504	ENGINE FOOT	1	
5	D6304200404	ENGINE FOOT	1	
6	Y0347412025	HEX. HEAD BOLT	7	
7	Y0010714025	HEX. HEAD BOLT	4	
7A	030214350	WASHER, LOCK.....	4	REPLACES P/N 0040014000
8	7085419004	RUBBER SUSPENSION	2	
9	7605419004A	RUBBER SUSPENSION	2	REPLACES P/N 7605419004
10	021112140	HEX. NUT	4	REPLACES P/N 0207010000
11	Y0602012787	RADIATOR	1	
11-1	Y0602015700	RADIATOR CAP.....	1	REPLACES P/N Y0602011079
12	D6311100304	BRACKET, RADIATOR	1	
13	Y0016906015	HEX. HEAD BOLT	4	
14	B1312600004	RUBBER MOUNT	2	
15	D6311200003	FAN GUARD	1	
16	Y0017106016	HEX. HEAD BOLT	5	
17	D6311500003	RADIATOR HOSE	1	
18	D6311500103	RADIATOR HOSE	1	
19	Y0605515136	HOSE BAND	4	
20	Y0602046268	AIR CLEANER.....	1	INCLUDES ITEMS W/#
20A#	Y0602046335	ELEMENT, AIR CLEANER	1	
21	D6374200503	BAND, AIR CLEANER	1	
22	011208025	HEX. HEAD BOLT.....	1	REPLACES P/N 0017108025
23	D6374200404	BRACKET, AIR CLEANER	1	
24	Y0016906015	HEX. HEAD BOLT	4	
25	D6374100703	HOSE, AIR CLEANER	1	
26	D6374100603	HOSE, AIR CLEANER	1	
27	Y0605515011	HOSE BAND, Ø70	3	
28	Y0605515001	HOSE BAND, Ø60	2	
29	1502025004	DRAIN JOINT	1	
30	Y0602021193	PACKING	1	
31	1502025103C	DRAIN JOINT	1	REPLACES P/N 1502025103
32	0802011104	PLUG	2	
33	Y0150000018	O-RING, AP18	2	
34	Y0016906015	HEX. HEAD BOLT	4	
35	D6321100104	DRAIN HOSE	1	
36	Y0605515132	HOSE BAND	2	
37	7812014003	DRAIN JOINT	1	
38	Y0199900550	DRAIN HOSE	1	
39	Y0605515094	HOSE BAND, Ø12	4	
40	0802081403	RESERVE TANK	1	
41	0802081104	CAP, RESERVE TANK	1	
42	Y0199100215	HOSE	1	
43	8702082004	BRACKET, RESERVE TANK	1	
44	011106015	HEX. HEAD BOLT.....	3	REPLACES P/N 0017106015
45	Y0199900580	HOSE	1	

ENGINE AND RADIATOR ASSY. (CONT'D.)

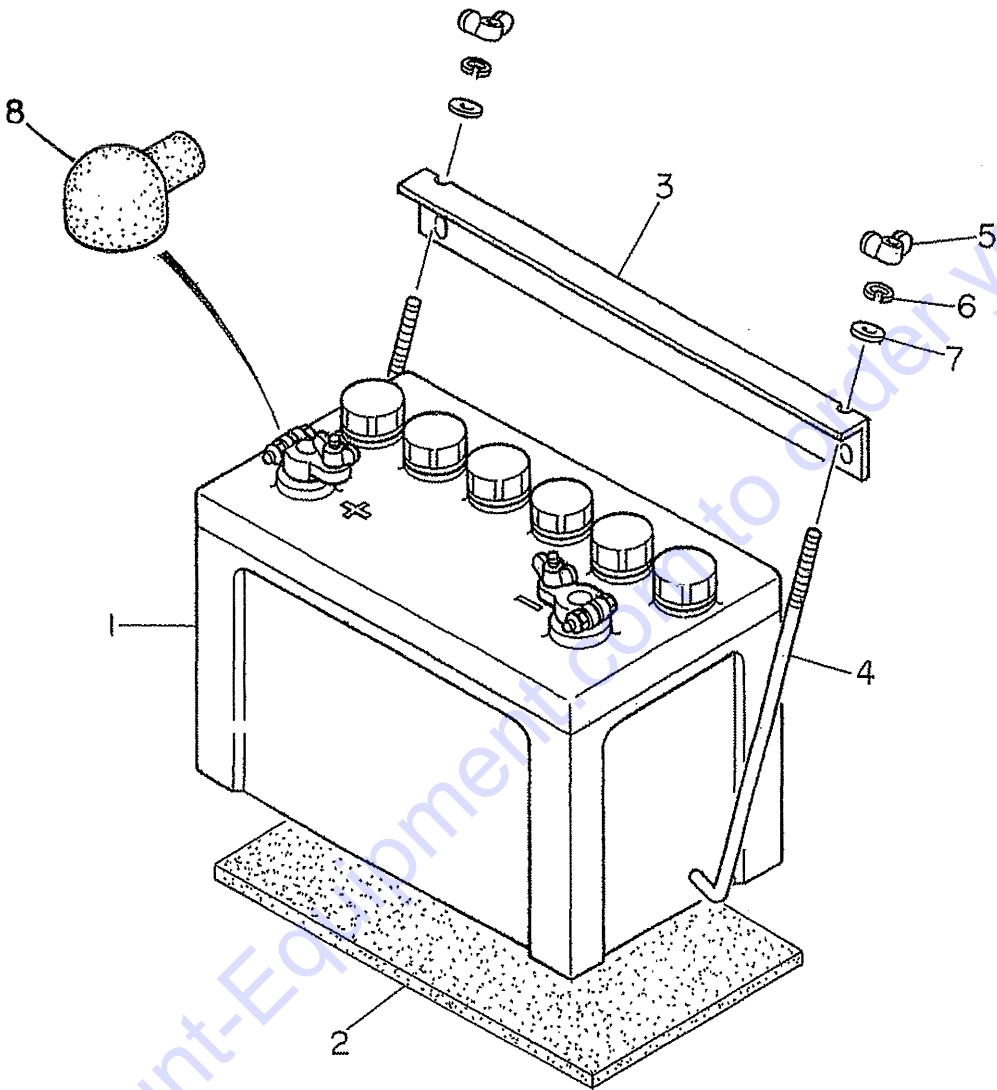


ENGINE AND RADIATOR ASSY. (CONT'D.)

<u>NO.</u>	<u>PART NO.</u>	<u>PART NAME</u>	<u>QTY.</u>	<u>REMARKS</u>
46	012210020	HEX. HEAD BOLT	1.....	REPLACES P/N 0010710020
47	D6311100004	BRACKET, RADIATOR	1	
48	011208030	HEX. HEAD BOLT	2.....	REPLACES P/N 0016908030
49	Y0220300400	RUBBER SEAL	2	
50	D6374100503	HOSE, AIR CLEANER	1	
51	D6491400004	RUBBER SEAL	1	
52	1J80110691	SENSOR.....	1.....	REPLACES P/N Y0602047040

Go to Discount-Equipment.com to order your parts

BATTERY ASSY.

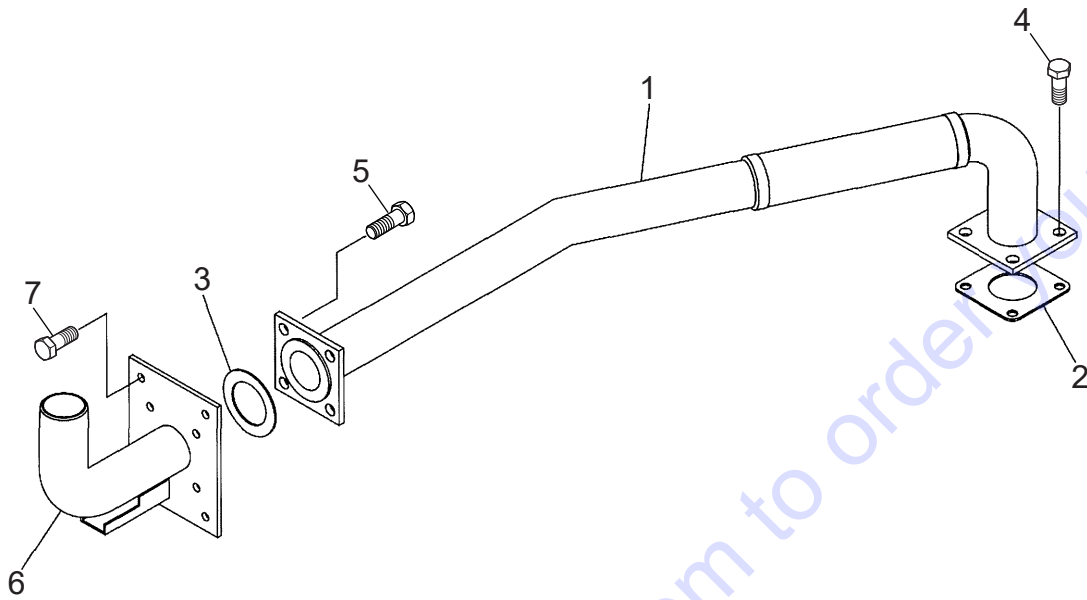


BATTERY ASSY.

<u>NO.</u>	<u>PART NO.</u>	<u>PART NAME</u>	<u>QTY.</u>	<u>REMARKS</u>
1	0165308026	BATTERY, 80D26R	1	
2	3312251104	BATTERY SHEET	1	
3	B1345200114	BATTERY BAND	1	
4	7612252004	BATTERY BOLT	2.....	REPLACES P/N 0805002904
5	57216	WING NUT.....	2.....	REPLACES P/N 0037808000
6	0040008000	WASHER, LOCK	2	
7	0401450080	WASHER, FLAT	2.....	REPLACES P/N 0041208000
8	0845040414	TERMINAL CAP, POSITIVE	1	

Go to Discount-Equipment.com to order your parts

MUFFLER ASSY.



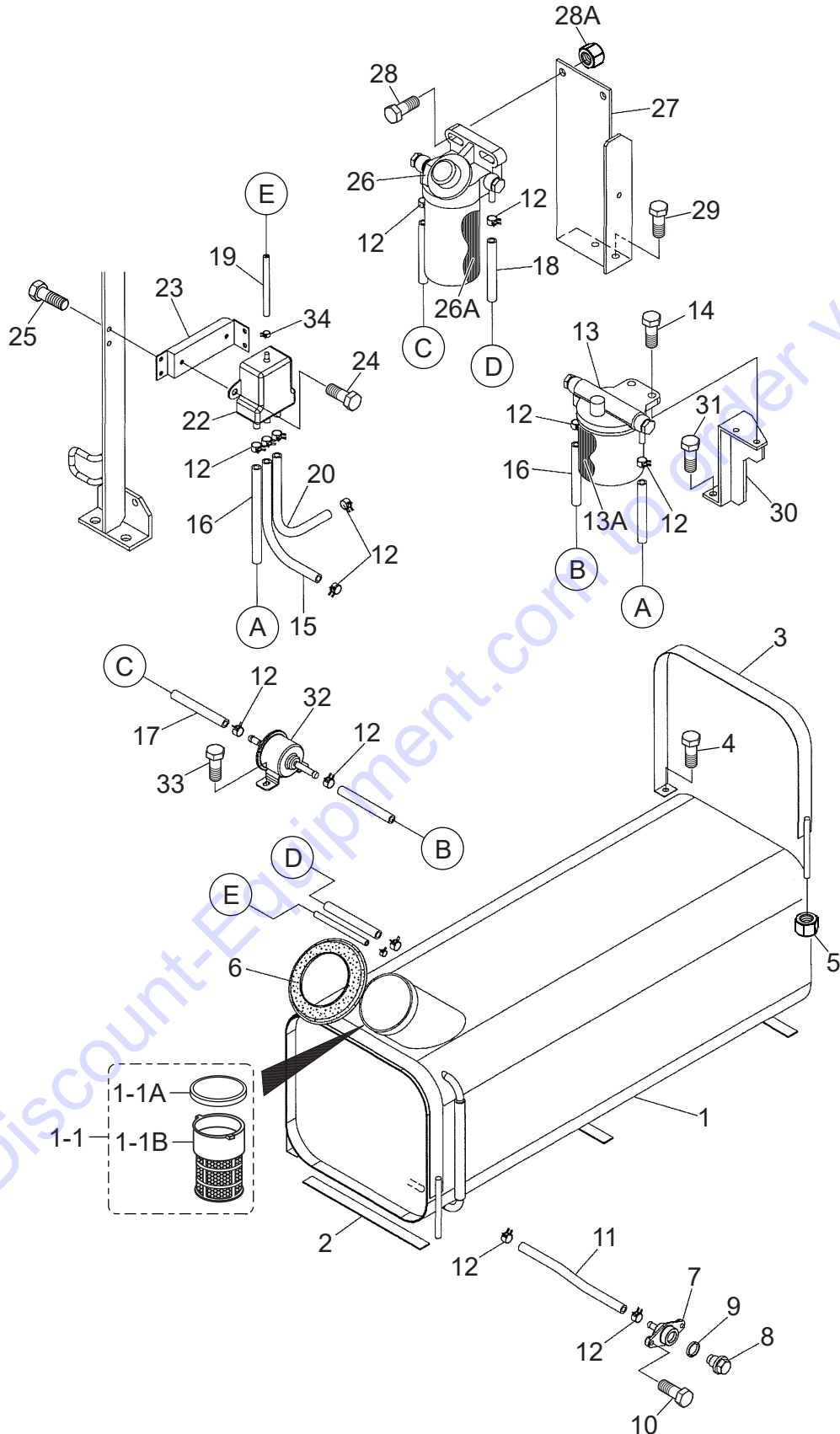
Go to Discount-Equipment.com to order your parts

MUFFLER ASSY.

<u>NO.</u>	<u>PART NO.</u>	<u>PART NAME</u>	<u>QTY.</u>	<u>REMARKS</u>
1	D6334101103	EXHAUST PIPE	1	
2	T007016420	GASKET	1.....	REPLACES P/N Y0602320159
3	D9304000004	GASKET	1	
4	011208025	HEX. HEAD BOLT.....	4.....	REPLACES P/N 0016908025
5	011208030	HEX. HEAD BOLT.....	4.....	REPLACES P/N 0016908030
6	D6334101203	TAIL PIPE	1	
7	011008020	HEX. HEAD BOLT.....	4.....	REPLACES P/N 0016908020

Go to Discount-Equipment.com to order your parts

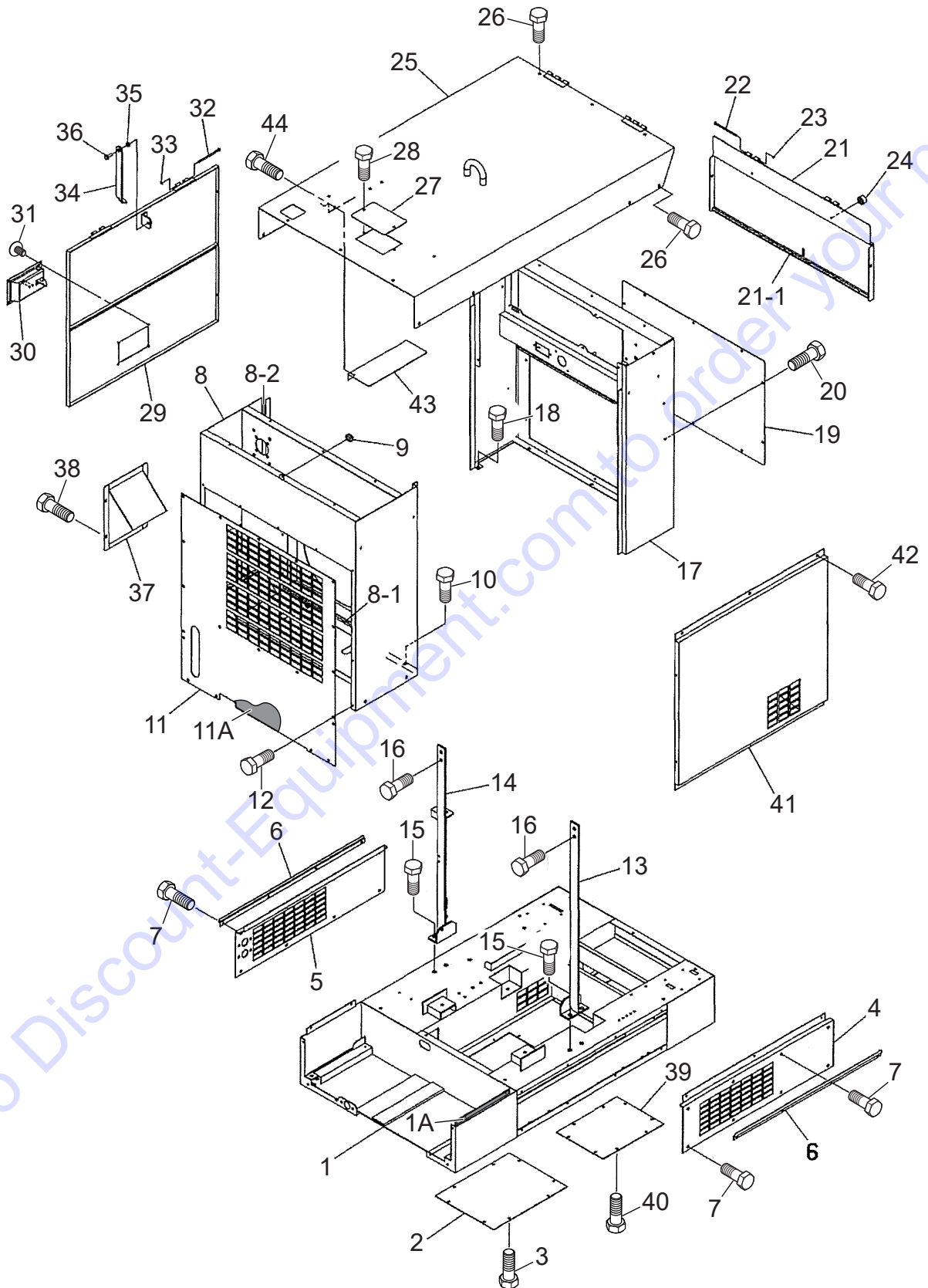
FUEL TANK ASSY.



FUEL TANK ASSY.

<u>NO.</u>	<u>PART NO.</u>	<u>PART NAME</u>	<u>QTY.</u>	<u>REMARKS</u>
1	D6364000503	FUEL TANK	1	
1-1	A9924800024	CAP AND STRAINER, FUEL TANK.....	1	INCLUDES ITEMS W/#
1-1A#	0845500104	CAP, FUEL TANK.....	1	REPLACES P/N W0810105800
1-1B#	0810105900	FUEL FILTER.....	1	NLA
2	Y0310600230	TANK SHEET	3	
3	D6364200204	TANK BAND	2	
4	0016906015	HEX. HEAD BOLT	2	
5	0207308000	HEX. HEAD NUT	2	
6	B9312400004	RUBBER SEAL	1	
7	7812014003	DRAIN JOINT	1	
8	0802011104	PLUG	1	
9	0150000018	O-RING, AP18	1	
10	0016906015	HEX. HEAD BOLT	2	
11	Y0370600250	DRAIN HOSE.....	1	S/N 5752666 AND BELOW
11	Y0370600220	DRAIN HOSE.....	1	S/N 5752667 AND ABOVE
12	0605515094	HOSE BAND, Ø12	14	
13	1J80043021	FUEL FILTER ASSY.....	1	INCLUDES ITEMS W/\$ REPLACES P/N Y0602042468
13A\$	1J80043172	CARTRIDGE, FUEL FILTER.....	1	REPLACES P/N Y0602042554
14	0016908040	HEX. HEAD BOLT	2	
15	Y0370600640	SUCTION HOSE	1	
16	Y0370600500	SUCTION HOSE	2	
17	Y0370600420	SUCTION HOSE	1	
18	Y0370600800	SUCTION HOSE	1	
19	Y0370701050	RETURN HOSE	1	
20	Y0370600700	RETURN HOSE	1	
21	0605515200	HOSE BAND	2	
22	TD35042571	TANK, RESERVE.....	1	REPLACES P/N Y0602042635
23	D6367700304	BRACKET	1	
24	0016906015	HEX. HEAD BOLT	2	
25	Y0016906020	HEX. HEAD BOLT	2	
26	1J43043350	SEPARATOR.....	1	INCLUDES ITEMS W/% REPLACES P/N Y0602042257
26A%	1J43043060	ELEMENT.....	1	REPLACES P/N Y0602042752
27	D6367700104	BRACKET	1	
28	Y0016910040	HEX. HEAD BOLT	2	
28A	021112140	HEX. NUT.....	2	REPLACES P/N 0207010000
29	011008020	HEX. HEAD BOLT.....	2	REPLACES P/N 0016908020
30	D6367700004	BRACKET	1	
31	011008020	HEX. HEAD BOLT.....	2	REPLACES P/N 0016908020
32	1G37752030	FUEL PUMP.....	1	REPLACES P/N Y0602023232
33	Y0016906015	HEX. HEAD BOLT	2	
34	Y0605515200	HOSE BAND, Ø8	2	

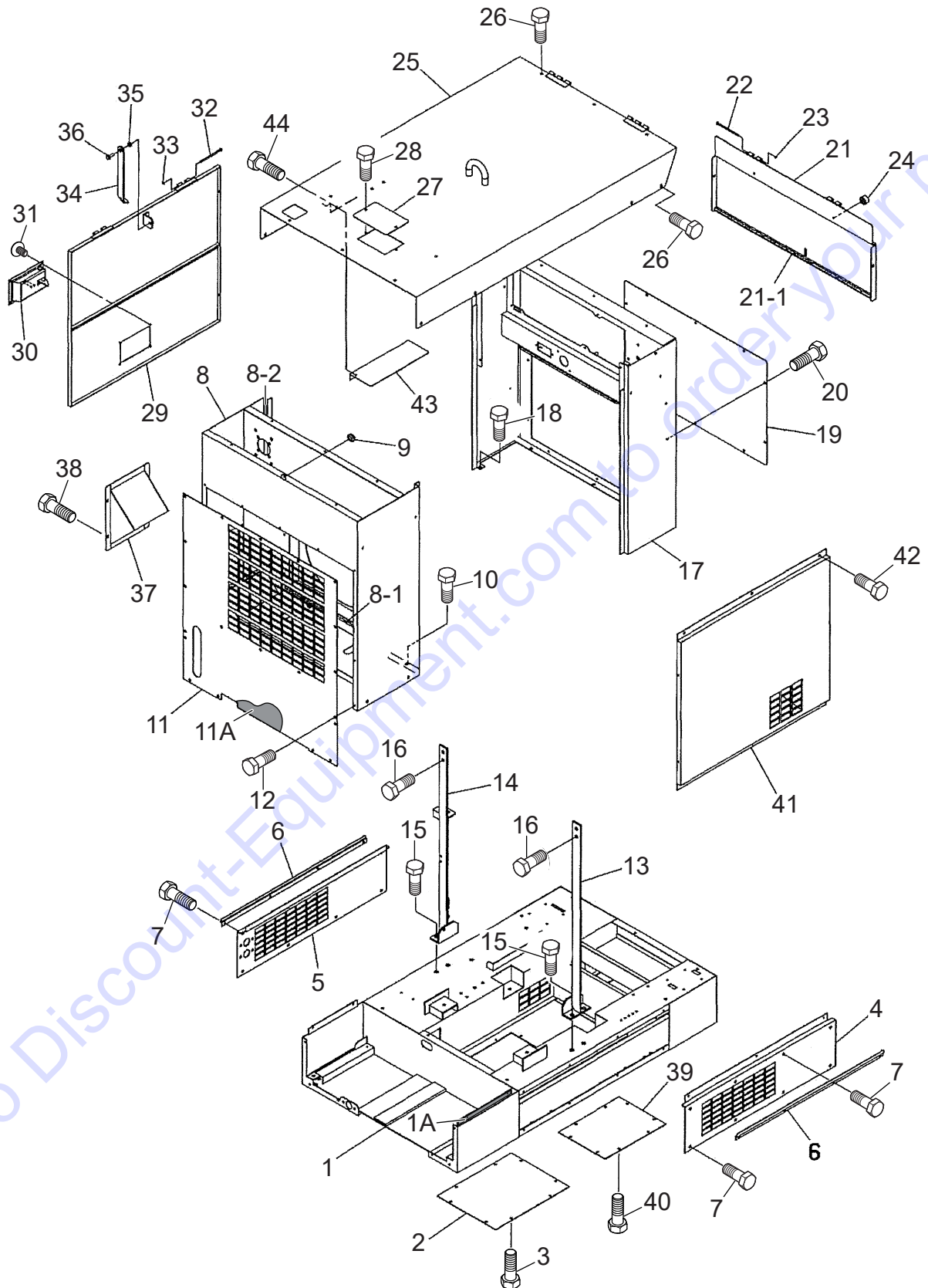
ENCLOSURE ASSY.



ENCLOSURE ASSY.

<u>NO.</u>	<u>PART NO.</u>	<u>PART NAME</u>	<u>QTY.</u>	<u>REMARKS</u>
1	D6414000602	BASE	1	
1A	D6492100104	RUBBER SHEET	1	
2	D6415100104	FLOOR PANEL	1	
3	0016906015	HEX. HEAD BOLT	8	
4	D6454200503	SPLASHER PANEL	1	
5	D6454200403	SPLASHER PANEL	1	
6	D6414500203	GUIDE	2	
7	0016906015	HEX. HEAD BOLT	16	
8	D6424000702	FRONT FRAME	1	
8-1	Y0317900470	RUBBER SEAL	2	
8-2	Y0315900210	RUBBER SEAL	1	
9	0601850239	GROMMET	1	
10	0016906015	HEX. HEAD BOLT	2	
11	D6424200503	COVER, FRONT FRAME	1	
11A	D6494100604	LINING	1	
12	0016906015	HEX. HEAD BOLT	10	
13	D6434300703	HANGER	1	
14	D6434300603	HANGER	1	
15	012212030	HEX. HEAD BOLT	4	REPLACES P/N 0017112030
16	012212030	HEX. HEAD BOLT	4	REPLACES P/N 0017112030
17	D6444000902	REAR FRAME	1	
18	011008020	HEX. HEAD BOLT	5	REPLACES P/N 0017108020
19	D6444300704	COVER, REAR FRAME	1	
20	0016906015	HEX. HEAD BOLT	10	
21	D6444200403	DOOR, REAR FRAME	1	
21-1	0226900805	RUBBER SEAL	1	
22	0810014704	PIN	2	
23	0080200004	SNAP RING	2	
24	0601851613	STOPPER	2	
25	D6464000502	ROOF PANEL	1	
26	0016906015	HEX. HEAD BOLT	17	
27	D6465400204	COVER	1	
28	0016906015	HEX. HEAD BOLT	2	
29	D6454000503	SIDE DOOR	1	
30	B9114000002	DOOR HANDLE ASSY.	1	
31	0021806015	MACHINE SCREW	4	
32	0810014704	PIN	2	
33	0080200004	SNAP RING	2	
34	8705164004	DOOR STAY	1	
35	7835088004	COLLAR	1	
36	011208025	HEX. HEAD BOLT	1	REPLACES P/N 0017108025
37	D6364300103	FILLER BRACKET	1	
38	0016906015	HEX. HEAD BOLT	4	
39	D6414100004	FLOOR PANEL	1	
40	0016906015	HEX. HEAD BOLT	8	

ENCLOSURE ASSY. (CONT'D.)

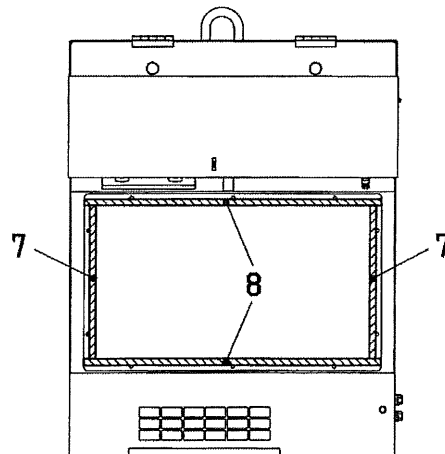
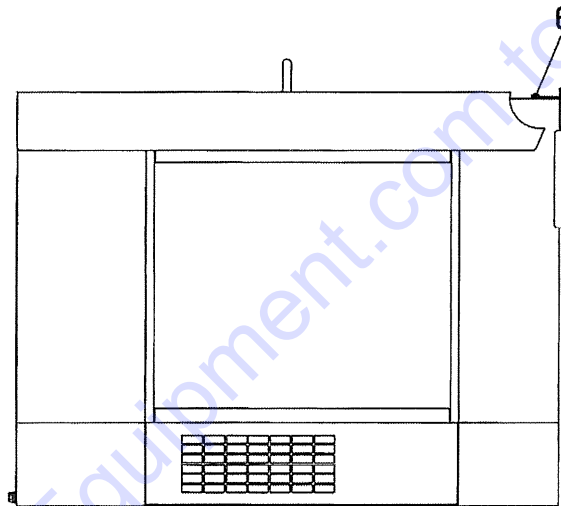
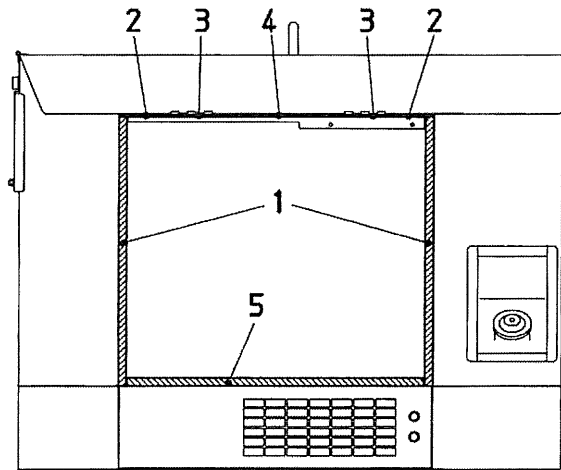


ENCLOSURE ASSY. (CONT'D.)

<u>NO.</u>	<u>PART NO.</u>	<u>PART NAME</u>	<u>QTY.</u>	<u>REMARKS</u>
41	D6454100303	SIDE PANEL	1	
42	0016906015	HEX. HEAD BOLT	6	
43	D6331300004	PLATE	1	
44	0016906015	HEX. HEAD BOLT	2	

Go to Discount-Equipment.com to order your parts

RUBBER SEALS ASSY.

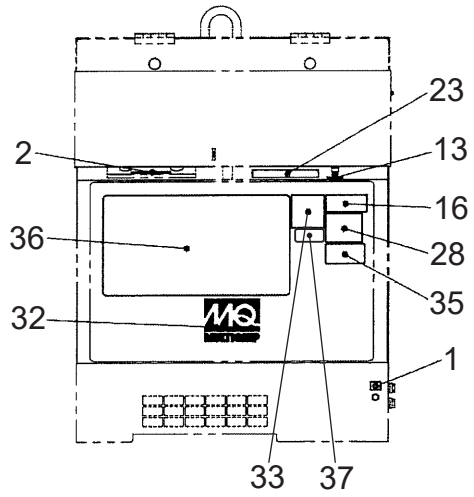
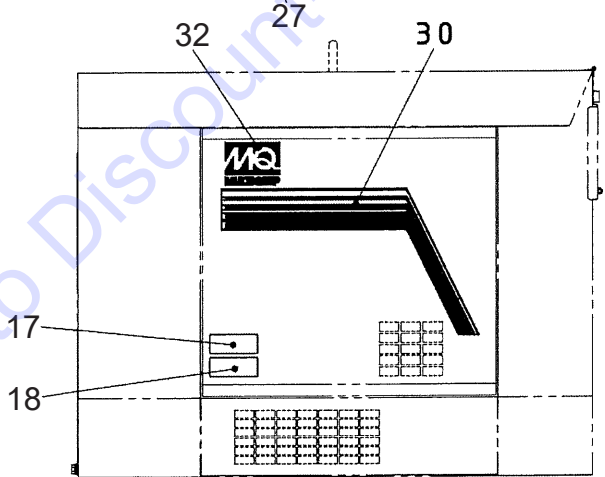
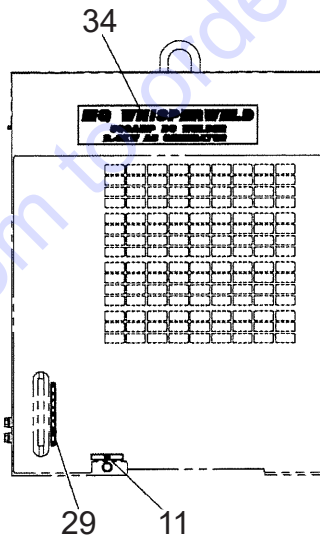
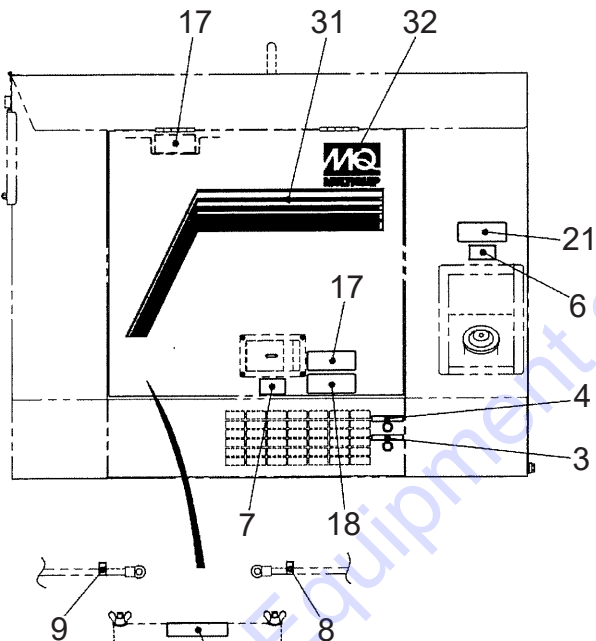
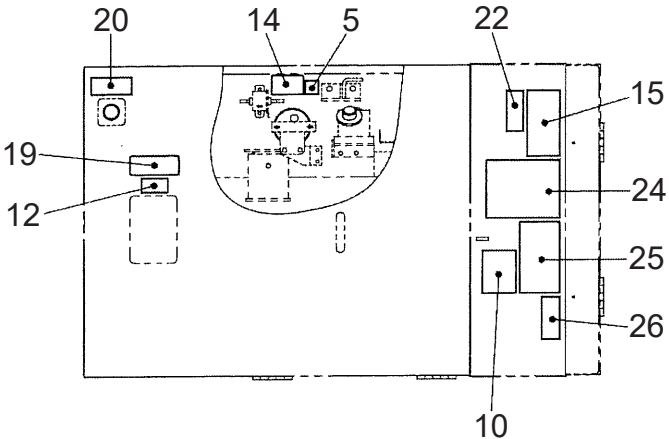


RUBBER SEALS ASSY.

<u>NO.</u>	<u>PART NO.</u>	<u>PART NAME</u>	<u>QTY.</u>	<u>REMARKS</u>
1	Y0228800700	RUBBER SEAL	2	
2	Y0221900120	RUBBER SEAL	2	
3	0221600100	RUBBER SEAL	2	
4	Y0221900324	RUBBER SEAL	1	
5	Y0228800730	RUBBER SEAL	1	
6	Y0314900800	RUBBER SEAL	1	
7	Y0314900375	RUBBER SEAL.....	2.....	S/N 5752666 AND BELOW
7	Y0314900405	RUBBER SEAL.....	2.....	S/N 5752667 AND ABOVE
8	Y0314900730	RUBBER SEAL	2	

Go to Discount-Equipment.com to order your parts

NAMEPLATE AND DECALS ASSY.



NAMEPLATE AND DECALS ASSY.

<u>NO.</u>	<u>PART NO.</u>	<u>PART NAME</u>	<u>QTY.</u>	<u>REMARKS</u>
1	0800628504	DECAL; GROUND	1.....	S-1123
2	0800690804	DECAL; WELDING OUTPUT TERMINAL.....	1.....	S-1238A
3	1630645004	DECAL; OIL DRAIN	1.....	S-1403
4	1630647004	DECAL; COOLANT DRAIN.....	1.....	S-1404
5	1630610404	DECAL; CAUTION	1.....	S-1406
6	B9504501214	DECAL; DIESEL FUEL	1.....	B90450121
7	1630610504	DECAL; CAUTION	1.....	S-1409
8	0800689404	DECAL; +	1.....	S-2090
9	0800689504	DECAL; -	1.....	S-2091
10	6390671104	DECAL; IMPORTANT "CHECK DAILY"	1.....	S-2377
11	7810680104	DECAL; FUEL DRAIN.....	1.....	S-3060
12	W7810680204	DECAL; COOLING WATER	1.....	S-3061
13	7670624004	DECAL; GROUND	1.....	S-3821
14	B9505000304	DECAL; CAUTION	1.....	B90500030
15	8700611613	DECAL; OPERATING PROCEDURE	1.....	S-4937A
16	8700611904	DECAL; DANGER ELECTRICAL SHOCK.....	1.....	S-4985
17	B9504000304	DECAL; CAUTION HOT PARTS	3.....	B90400030
18	B9504000404	DECAL; CAUTION MOVING PARTS	2.....	B90400040
19	B9504100104	DECAL; WARNING HOT COOLANT	1.....	B90410010
20	B9504200004	DECAL; WARNING ENGINE EXHAUST	1.....	B90420000
21	B9504500004	DECAL; WARNING DIESEL FUEL	1.....	B90450000
22	B9511100304	DECAL; WARNING	1.....	B91110030
23	D6552000703	DECAL; AC POWER OUTPUT	1.....	D65200070
24	D6552000803	DECAL; WORKING CURRENT-TO-DUTY.....	1.....	D65200080
25	D9512100203	DECAL; DANGER CAUTION.....	1.....	D91210020
26	DCL160	DECAL; PROPOSITION 65 WARNING	1.....	REPLACES P/N D9522100204 D92210020 S/N 5823505 AND BELOW
27	0820650604	DECAL; DANGER EXPLOSIVE GASES	1	
28	A9504000014	DECAL; WARNING, DANGEROUS GAS	1.....	A90400001
29	W8720615204	DECAL; FUEL DRAIN.....	1.....	S-4704A
30	D4561100303	STRIPE	1	
31	D4561100403	STRIPE	1	
32	D3561000104	DECAL; MQ MULTIQUIP	3	
33	D9531100004	DECAL; DANGER ELECTROCUTION	1.....	D93110000
34	D6561000102	DECAL; WHISPER WELD	1	
35	920214100	DECAL; WARNING, START FIRES	1.....	REPLACES P/N M9504200004 M90420000
36	D6551001602	DECAL; DPF	1.....	D65100160
37	A9511101304	DECAL; PROPOSITION 65 WARNING	1.....	A91110130 S/N 5823506 AND ABOVE

PARTS FINDER

**Search Website
by Part Number**



**Search Manual
Library For Parts
Manual & Lookup Part
Numbers – Purchase
or Request Quote**

Search Manuals

Enter your information to help us find the right parts manual for your machine.

* Brand:

* Model:

* Serial:

* Part Number:

SEARCH

**Can't Find Part or
Manual? Request Help
by Manufacturer,
Model & Description**

Parts Order Form

Please fill in the following information to help us find the right part for your machine.

Manufacturer:	<input type="text"/>
Model:	<input type="text"/>
Description:	<input type="text"/>
Part Number:	<input type="text"/>
Quantity:	<input type="text"/>
Notes:	<input type="text"/>

Discount-Equipment.com is your online resource for quality parts & equipment.

Florida: **561-964-4949** Outside Florida TOLL FREE: **877-690-3101**

Need parts?

Click on this link: <http://www.discount-equipment.com/category/5443-parts/> and choose one of the options to help get the right parts and equipment you are looking for. Please have the machine model and serial number available in order to help us get you the correct parts. If you don't find the part on the website or on one of the online manuals, please fill out the request form and one of our experienced staff members will get back to you with a quote for the right part that your machine needs.

We sell worldwide for the brands: Genie, Terex, JLG, MultiQuip, Mikasa, Essick, Whiteman, Mayco, Toro Stone, Diamond Products, Generac Magnum, Airman, Haulotte, Barreto, Power Blanket, Nifty Lift, Atlas Copco, Chicago Pneumatic, Allmand, Miller Curber, Skyjack, Lull, Skytrak, Tsurumi, Husquvarna Target, Stow, Wacker, Sakai, Mi-T-M, Sullair, Basic, Dynapac, MBW, Weber, Bartell, Bennar Newman, Haulotte, Ditch Runner, Menegotti, Morrison, Contec, Buddy, Crown, Edco, Wyco, Bomag, Laymor, EZ Trench, Bil-Jax, F.S. Curtis, Gehl Pavers, Heli, Honda, ICS/PowerGrit, IHI, Partner, Imer, Clipper, MMD, Koshin, Rice, CH&E, General Equipment, Amida, Coleman, NAC, Gradall, Square Shooter, Kent, Stanley, Tamco, Toku, Hatz, Kohler, Robin, Wisconsin, Northrock, Oztec, Toker TK, Rol-Air, APT, Wylie, Ingersoll Rand / Doosan, Innovatech, Con X, Ammann, Mecalac, Makinex, Smith Surface Prep, Small Line, Wanco, Yanmar