

MANDATORY UPDATE INFORMATION

Date: 08/08/2014
To: LT Series Light Towers Owners
From: Multiquip Product Department
Subject: Snap Rings Replacement — **Mandatory Update**



Dear Multiquip Customer,

Our records indicate that your company purchased one or more LT Series light towers. Multiquip is alerting the owners of LT Series light towers of updates required to the light tower. During assembly, snap rings holding the pin that anchors the mast cable may have been sprung. To correct this problem, the snap rings may need to be replaced.

The accompanying bulletin explains the action required to correct the problem. **Failure to perform this procedure may result in:**

■ **Damage to mast assembly and/or damage to property or personal injury.**

If this light tower has been resold, please forward this bulletin to the new owner.





Service Bulletin

LT Series Snap Ring Replacement

Product Group: Light Towers	Date Issued: 08/08/14	Service Bulletin No.: LT20140728
---------------------------------------	---------------------------------	--

Bulletin Type <input checked="" type="checkbox"/> Mandatory <input type="checkbox"/> Information Only <input type="checkbox"/> Recommended Change	Models/Series Affected: LT SERIES S/N 35167 AND HIGHER NOTE: Serial Number is last 5 digits of VIN located on the A frame of the trailer (driver's side).
---	--

Details

Problem: When the snap rings were installed on the line, the snap rings sprung. This is critical as the snap rings contain the pin that anchors the mast cable.

Solution: Replace snap rings. **Failure to perform this procedure may result in damage to mast assembly and/or damage to property or personal injury.**

Parts Information

Part No.	Description	Qty.	Remarks
1135	Snap Rings	2	

Tool Needed

- Snap Ring Tool

Procedure

1. Inspect snap rings on both ends of the spring that anchors the mast cable on the light tower trailer. See Figure 1 for location of snap rings.

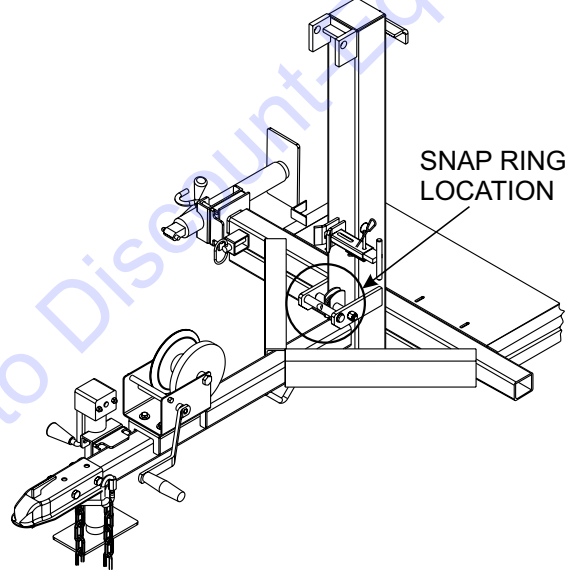


Figure 1. Location of Snap Rings

2. If snap ring is completely seated, replacement is not necessary.
3. If snap ring has sprung:
 - a. Remove the snap ring with a snap ring tool. See Figure 2.
 - b. Install new snap ring carefully with the snap ring tool. Ensure snap ring has seated completely within groove of pin. See Figure 2.

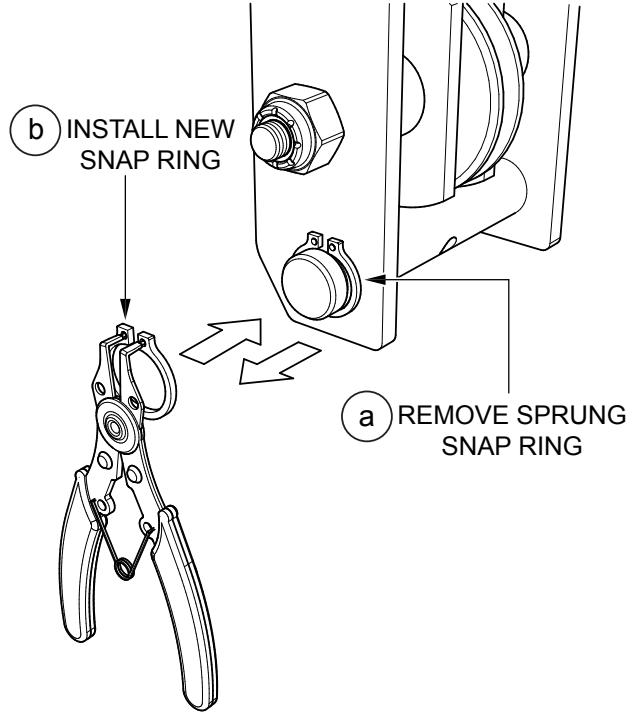


Figure 2. Installation of Snap Rings

PARTS FINDER

**Search Website
by Part Number**



**Search Manual
Library For Parts
Manual & Lookup Part
Numbers – Purchase
or Request Quote**

Search Manuals

Enter your information to help us find the right parts manual for your machine.

* Brand:

* Model:

* Serial:

* Part Number:

SEARCH

**Can't Find Part or
Manual? Request Help
by Manufacturer,
Model & Description**

Parts Order Form

Please fill in the following information to help us find the right part for your machine.

Manufacturer:	<input type="text"/>
Model:	<input type="text"/>
Description:	<input type="text"/>
Part Number:	<input type="text"/>
Quantity:	<input type="text"/>
Notes:	<input type="text"/>

Discount-Equipment.com is your online resource for quality parts & equipment.

Florida: **561-964-4949** Outside Florida TOLL FREE: **877-690-3101**

Need parts?

Click on this link: <http://www.discount-equipment.com/category/5443-parts/> and choose one of the options to help get the right parts and equipment you are looking for. Please have the machine model and serial number available in order to help us get you the correct parts. If you don't find the part on the website or on one of the online manuals, please fill out the request form and one of our experienced staff members will get back to you with a quote for the right part that your machine needs.

We sell worldwide for the brands: Genie, Terex, JLG, MultiQuip, Mikasa, Essick, Whiteman, Mayco, Toro Stone, Diamond Products, Generac Magnum, Airman, Haulotte, Barreto, Power Blanket, Nifty Lift, Atlas Copco, Chicago Pneumatic, Allmand, Miller Curber, Skyjack, Lull, Skytrak, Tsurumi, Husquvarna Target, Stow, Wacker, Sakai, Mi-T-M, Sullair, Basic, Dynapac, MBW, Weber, Bartell, Bennar Newman, Haulotte, Ditch Runner, Menegotti, Morrison, Contec, Buddy, Crown, Edco, Wyco, Bomag, Laymor, EZ Trench, Bil-Jax, F.S. Curtis, Gehl Pavers, Heli, Honda, ICS/PowerGrit, IHI, Partner, Imer, Clipper, MMD, Koshin, Rice, CH&E, General Equipment, Amida, Coleman, NAC, Gradall, Square Shooter, Kent, Stanley, Tamco, Toku, Hatz, Kohler, Robin, Wisconsin, Northrock, Oztec, Toker TK, Rol-Air, APT, Wylie, Ingersoll Rand / Doosan, Innovatech, Con X, Ammann, Mecalac, Makinex, Smith Surface Prep, Small Line, Wanco, Yanmar