

Parts List  
for Portable Generators  
English

CPG 70-90-120 Jd



Engine 4045Jd



# CPG 70-90-120 Jd

Engine 4045Jd

Parts Index .....	5
Warranty and Liability .....	9
Safety Precautions for Portable compressors.....	11
Ordering Spare Parts.....	10
Parts Lists .....	15





# PARTS INDEX

<b>PART</b>	<b>PAGE</b>	<b>PART</b>	<b>PAGE</b>	<b>PART</b>	<b>PAGE</b>
<b>J</b>					
JACK TONGUE .....	44, 46				
<b>K</b>					
KEY .....	34				
KIT COOLANT RECOVER .....	20				
KIT COOLANT RECOVERY SYSTEM .....	22				
<b>L</b>					
LABEL .....	38, 40, 42, 52				
LABEL AC INTERNET ADDRESS .....	60				
LABEL CALIFORNIA EMISSIONS .....	38, 40, 42				
LABEL CAUTION HOT EXHAUST .....	38, 40, 42				
LABEL EMERGENCY STOP .....	48, 50				
LABEL HIGH VOLTAGE .....	27, 28, 29				
LABEL INFORMATION .....	52				
LABEL LOGO .....	60, 65				
LABEL MODEL DESIGNATION .....	30, 31, 32				
LABEL NEUTRAL GROUNDED .....	38, 40, 42				
LABEL OPERATING INSTRUCTION .....	61				
LABEL OPERATING .....	61				
LABEL OPERATING INSTRUCTION .....	61				
LABEL SELECTOR SWITCH POSITION .....	30, 31, 32				
LABEL WARNING .....	38, 40, 42				
LABEL WARNING ALTERNATOR .....	38, 40, 42				
LAMP LICENSE PLATE .....	44, 46				
LIGHT .....	48, 50				
LOWER HOSE RADIATOR .....	22				
LOWER PIPE CAC .....	22				
<b>M</b>					
MARKINGS .....	38, 39, 40, 41, 42, 43				
MOUNT CUBICLE .....	55				
MOUNT-ENGINE .....	33				
MUDFLAP .....	44, 46				
MUFFLER .....	36				
<b>O</b>					
OIL SYSTEM .....	44				
O-RING .....	44				
<b>P</b>					
PANEL .....	48, 50				
PANEL ALTERNATOR .....	31, 32				
PANEL CONTROL .....	48, 50				
PANEL CORNER .....	63				
PANEL CUBICLE DOOR .....	48, 50				
PANEL EXHAUST .....	36				
PANEL LIGHT .....	48, 50, 52				
PANEL ROOF REAR .....	57				
PANEL TERMINAL BOARD .....	48, 50				
PARCOOL EG .....	17				
PAROIL .....	16				
PIPE AIR INLET .....	25				
PIPE PLUG .....	20				
PLATE .....	52, 55				
PLATE ALTERNATOR .....	31				
PLATE ALTERNATOR MOUNT .....	32				
PLATE ALTERNATOR SWITCH .....	31, 32				
PLATE LIFTING BEAM .....	34				
PLATE HEAT DEFLECTOR .....	36				
PLUG .....	29, 52, 44, 55				
POTMETER .....	48, 50, 52				
PROTECTION .....	48, 50, 52				
<b>R</b>					
RADIATOR .....	22				
RAIL DIN MOUNTING .....	48, 50, 52				
RAIN CAP .....	36				
RAIN GUARD .....	52				
RAIN GUARD CUBICAL .....	34				
REAR PANEL ASSEMBLY .....	34, 65				
REAR PANEL .....	62, 65				
REAR ROOF ASSEMBLY .....	34, 57				
RECEPTACLE .....	48, 50, 52				
RED LIGHT .....	44, 46				
RELAY .....	25, 48, 50, 52				
ROOF PANEL .....	56				
RUBBER BUFFER .....	33				
<b>S</b>					
SAFETY CHAIN .....	44, 46				
SADDLE CLAMP .....	36				
<b>SELECTOR SWITCH .....</b>					
<b>30, 31, 32, 48, 50, 52</b>					
<b>SERVICE PAK .....</b>					
<b>15</b>					
<b>SHIELD EXHAUST .....</b>					
<b>36</b>					
<b>SHIELD HEAT EXHAUST .....</b>					
<b>36</b>					
<b>SHUNT TRIP .....</b>					
<b>48, 50</b>					
<b>SIDE PANEL .....</b>					
<b>58</b>					
<b>SIDE PANEL ASSEMBLY .....</b>					
<b>34, 58</b>					
<b>SIDE SUPPORT .....</b>					
<b>34</b>					
<b>SPACER .....</b>					
<b>34</b>					
<b>SPACER ENGINE .....</b>					
<b>20</b>					
<b>STRIP .....</b>					
<b>52</b>					
<b>SUPPORT .....</b>					
<b>48</b>					
<b>SUPPORT BREAKER .....</b>					
<b>50</b>					
<b>SUPPORT CAC BRACKET .....</b>					
<b>22</b>					
<b>SUPPORT CIRCUIT BREAKER .....</b>					
<b>52</b>					
<b>SUPPORT COOLER .....</b>					
<b>20, 22, 34</b>					
<b>SUPPORT CROSS RAIL .....</b>					
<b>33</b>					
<b>SWITCH .....</b>					
<b>48, 50, 52</b>					
<b>T</b>					
<b>TERMINAL .....</b>					
<b>48, 50, 52</b>					
<b>TERMINAL BLOCK .....</b>					
<b>48, 50, 52</b>					
<b>TERMINAL BOARD .....</b>					
<b>48, 50, 52</b>					
<b>TERMINAL END STOP .....</b>					
<b>48, 50</b>					
<b>TOWING EYE .....</b>					
<b>44, 46</b>					
<b>TRAILER ASSEMBLY .....</b>					
<b>44, 45, 46, 47</b>					
<b>TRANSFORMER .....</b>					
<b>48, 50</b>					
<b>TRIP UNIT .....</b>					
<b>48</b>					
<b>TUBE WALL .....</b>					
<b>22</b>					
<b>U</b>					
<b>UPPER PIPE CAC .....</b>					
<b>22</b>					
<b>V</b>					
<b>VALVE .....</b>					
<b>20, 22</b>					
<b>VENT FRONT DOOR .....</b>					
<b>34, 64</b>					
<b>VENT REAR DOOR .....</b>					
<b>34, 66, 67</b>					
<b>VIBRATION MOUNT .....</b>					
<b>33</b>					
<b>VOLTMETER .....</b>					
<b>48, 50, 52</b>					

**PARTS INDEX**

<b>PART</b>	<b>PAGE</b>	<b>PART</b>	<b>PAGE</b>	<b>PART</b>	<b>PAGE</b>
<b>W</b>					
WARNING LABEL .....	52				
WHEEL-TIRE ASSEMBLY .....	44, 46				
WINDOW .....	61				
WIRE SET .....	30, 31, 32				
WIRING HARNESS .....	26				
<b>Y</b>					
YELLOW LIGHT .....	44, 46				





### **Warranty and Liability Limitation**

Use only authorized parts.

Any damage or malfunction caused by the use of unauthorized parts is not covered by Warranty or Product Liability.

The manufacturer does not accept any liability for any damage arising for modifications, additions or conversions made without the manufacturer's approval in writing.

Copyright 2011, Chicago Pneumatic

Any unauthorized use or copying of the contents or any part thereof is prohibited.

This applies in particular to trademarks, model denominations, part numbers and drawings

Derechos de reproducción 2011, Chicago Pneumatic,

Está prohibida toda utilización o reproducción total o parcial no autorizada de estos contenidos,

en especial de las marcas registradas, denominaciones de modelos, números de piezas y planos

### **Limitation de garantie et de responsabilité**

Utiliser uniquement les pièces homologuées.

Tout dommage ou mauvais fonctionnement dû à l'utilisation de pièces non homologuées n'est pas couvert par la garantie ou la responsabilité des produits défectueux.

Le fabricant décline toute responsabilité en cas de dommage faisant suite à des modifications, des ajouts ou des conversions effectués sans l'accord écrit du fabricant.

Copyright 2011, Chicago Pneumatic

Toute utilisation ou copie du contenu, ou d'une partie de celui-ci, non autorisée est interdite.

Cette interdiction s'applique en particulier aux marques de commerce, aux dénominations des modèles, aux numéros des pièces et aux schémas.

### **Limitación de garantía y responsabilidad**

Use sólo piezas autorizadas.

La garantía o responsabilidad del producto no cubre ningún daño o funcionamiento defectuoso provocado por el uso de piezas no autorizadas.

El fabricante no acepta ninguna responsabilidad por los daños provocados por modificaciones, adiciones o conversiones realizadas sin la aprobación por escrito del fabricante.

# SAFETY PRECAUTIONS FOR PORTABLE GENERATORS

To be read attentively and acted accordingly before towing, lifting, operating, performing maintenance or repairing the generator

## 0.1 INTRODUCTION

The policy of Chicago Pneumatic is to provide the users of their equipment with safe, reliable and efficient products. Factors taken into account are among others:

- the intended and predictable future use of the products, and the environments in which they are expected to operate,
- applicable rules, codes and regulations,
- the expected useful product life, assuming proper service and maintenance,
- providing the manual with up-to-date information.

Before handling any product, take time to read the relevant instruction manual. Besides giving detailed operating instructions, it also gives specific information about safety, preventive maintenance, etc.

Keep the manual always at the unit location, easy accessible to the operating personnel.

See also the safety precautions of the engine and possible other equipment, which are separately sent along or are mentioned on the equipment or parts of the unit.

These safety precautions are general and some statements will therefore not always apply to a particular unit.

Only people that have the right skills should be allowed to operate, adjust, perform maintenance or repair on Chicago Pneumatic equipment. It is the responsibility of management to appoint operators with the appropriate training and skill for each category of job.

### Skill level 1: Operator

An operator is trained in all aspects of operating the unit with the push-buttons, and is trained to know the safety aspects.

### Skill level 2: Mechanical technician

A mechanical technician is trained to operate the unit the same as the operator. In addition, the mechanical technician is also trained to perform maintenance and repair, as described in the instruction manual, and is allowed to change settings of the control and safety system. A mechanical technician does not work on live electrical components.

### Skill level 3: Electrical technician

An electrical technician is trained and has the same

qualifications as both the operator and the mechanical technician. In addition, the electrical technician may carry out

electrical repairs within the various enclosures of the unit. This includes work on live electrical components.

### Skill level 4: Specialist from the manufacturer

This is a skilled specialist sent by the manufacturer or its agent to perform complex repairs or modifications to the equipment.

In general it is recommended that not more than two people operate the unit, more operators could lead to unsafe operating conditions. Take necessary steps to keep unauthorized persons away from the unit and eliminate all possible sources of danger at the unit.

When handling, operating, overhauling and/or performing maintenance or repair on Chicago Pneumatic equipment, the mechanics are expected to use safe engineering practices and to observe all relevant local safety requirements and ordinances. The following list is a reminder of special safety directives and precautions mainly applicable to Chicago Pneumatic equipment.

Neglecting the safety precautions may endanger people as well as environment and machinery:

- endanger people due to electrical, mechanical or chemical influences,
- endanger the environment due to leakage of oil, solvents or other substances,
- endanger the machinery due to function failures.

All responsibility for any damage or injury resulting from neglecting these precautions or by non-observance of ordinary caution and due care required in handling, operating, maintenance or repair, also if not expressly mentioned in this instruction manual, is disclaimed by Chicago Pneumatic.

The manufacturer does not accept any liability for any damage arising from the use of non-original parts and for modifications, additions or conversions made without the manufacturer's approval in writing.

If any statement in this manual does not comply with local legislation, the stricter of the two shall be applied.

Statements in these safety precautions should not be interpreted as suggestions, recommendations or inducements that it should be used in violation of any

applicable laws or regulations.

## 0.2 GENERAL SAFETY PRECAUTIONS

- 1 The owner is responsible for maintaining the unit in a safe operating condition. Unit parts and accessories must be replaced if missing or unsuitable for safe operation.
- 2 The supervisor, or the responsible person, shall at all times make sure that all instructions regarding machinery and equipment operation and maintenance are strictly followed and that the machines with all accessories and safety devices, as well as the consuming devices, are in good repair, free of abnormal wear or abuse, and are not tampered with.
- 3 Whenever there is an indication or any suspicion that an internal part of a machine is overheated, the machine shall be stopped but no inspection covers shall be opened before sufficient cooling time has elapsed; this to avoid the risk of spontaneous ignition of oil vapour when air is admitted.
- 4 Normal ratings (pressures, temperatures, speeds, etc.) shall be durably marked.
- 5 Operate the unit only for the intended purpose and within its rated limits (pressure, temperature, speeds, etc.).
- 6 The machinery and equipment shall be kept clean, i.e. as free as possible from oil, dust or other deposits.
- 7 To prevent an increase in working temperature, inspect and clean heat transfer surfaces (cooler fins, intercoolers, water jackets, etc.) regularly. See the maintenance schedule.
- 8 All regulating and safety devices shall be maintained with due care to ensure that they function properly. They may not be put out of action.
- 9 Pressure and temperature gauges shall be checked regularly with regard to their accuracy. They shall be replaced whenever outside acceptable tolerances.
- 10 Safety devices shall be tested as described in the maintenance schedule of the instruction manual to determine that they are in good operating condition.
- 11 Mind the markings and information labels on the unit.
- 12 In the event the safety labels are damaged or destroyed, they must be replaced to ensure operator safety.

- 13 Keep the work area neat. Lack of order will increase the risk of accidents.
- 14 When working on the unit, wear safety clothing. Depending on the kind of activities these are: safety glasses, ear protection, safety helmet (including visor), safety gloves, protective clothing, safety shoes. Do not wear the hair long and loose (protect long hair with a hairnet), or wear loose clothing or jewelry.
- 15 Take precautions against fire. Handle fuel, oil and anti-freeze with care because they are inflammable substances. Do not smoke or approach with naked flame when handling such substances. Keep a fire-extinguisher in the vicinity.
- 16a **Portable generators (with earthing pin):**  
Earth the generator as well as the load properly.
- 16b **Portable generators IT:**  
**Note:** This generator is built to supply a sheer alternating current IT network.  
Earth the load properly.

### 0.3 SAFETY DURING TRANSPORT AND INSTALLATION

To lift a unit, all loose or pivoting parts, e.g. doors and towbar, shall first be securely fastened.

Do not attach cables, chains or ropes directly to the lifting eye; apply a crane hook or lifting shackle meeting local safety regulations. Never allow sharp bends in lifting cables, chains or ropes.

Helicopter lifting is not allowed.

It is strictly forbidden to dwell or stay in the risk zone under a lifted load. Never lift the unit over people or residential areas. Lifting acceleration and retardation shall be kept within safe limits.

- 1 Before towing the unit:
  - check the towbar, the brake system and the towing eye. Also check the coupling of the towing vehicle,
  - check the towing and brake capability of the towing vehicle,
  - check that the towbar, jockey wheel or stand leg is safely locked in the raised position,
  - ascertain that the towing eye can swivel freely on the hook,
  - check that the wheels are secure and that the tyres are in good condition and inflated correctly,
  - connect the signalisation cable, check all lights and connect the pneumatic brake couplers,
  - attach the safety break-away cable or safety chain to the towing vehicle,
  - remove wheel chocks, if applied, and disengage the parking brake.
- 2 To tow a unit use a towing vehicle of ample capacity. Refer to the documentation of the towing vehicle.
- 3 If the unit is to be backed up by the towing vehicle, disengage the overrun brake mechanism (if it is not an automatic mechanism).
- 4 Never exceed the maximum towing speed of the unit (mind the local regulations).
- 5 Place the unit on level ground and apply the parking brake before disconnecting the unit from the towing vehicle. Unclip the safety break-away cable or safety chain. If the unit has no parking brake or jockey wheel, immobilize the unit by placing chocks in front of and/or behind the wheels. When the towbar can be positioned vertically, the locking device must be applied and kept

in good order.

- 6 To lift heavy parts, a hoist of ample capacity, tested and approved according to local safety regulations, shall be used.
- 7 Lifting hooks, eyes, shackles, etc., shall never be bent and shall only have stress in line with their design load axis. The capacity of a lifting device diminishes when the lifting force is applied at an angle to its load axis.
- 8 For maximum safety and efficiency of the lifting apparatus all lifting members shall be applied as near to perpendicular as possible. If required, a lifting beam shall be applied between hoist and load.
- 9 Never leave a load hanging on a hoist.
- 10 A hoist has to be installed in such a way that the object will be lifted perpendicular. If that is not possible, the necessary precautions must be taken to prevent load-swinging, e.g. by using two hoists, each at approximately the same angle not exceeding 30° from the vertical.
- 11 Locate the unit away from walls. Take all precautions to ensure that hot air exhausted from the engine and driven machine cooling systems cannot be recirculated. If such hot air is taken in by the engine or driven machine cooling fan, this may cause overheating of the unit; if taken in for combustion, the engine power will be reduced.
- 12 Generators shall be stalled on an even, solid floor, in a clean location with sufficient ventilation. If the floor is not level or can vary in inclination, consult Chicago Pneumatic.
- 13 The electrical connections shall correspond to local codes. The machines shall be earthed and protected against short circuits by fuses or circuit breakers.
- 14 Never connect the generator outlets to an installation which is also connected to a public mains.
- 15 Before connecting a load, switch off the corresponding circuit breaker, and check whether frequency, voltage, current and power factor comply with the ratings of the generator.

## 0.4 SAFETY DURING USE AND OPERATION

- 1 When the unit has to operate in a fire-hazardous environment, each engine exhaust has to be provided with a spark arrestor to trap incendiary sparks.
- 2 The exhaust contains carbon monoxide which is a lethal gas. When the unit is used in a confined space, conduct the engine exhaust to the outside atmosphere by a pipe of sufficient diameter; do this in such a way that no extra back pressure is created for the engine. If necessary, install an extractor. Observe any existing local regulations. Make sure that the unit has sufficient air intake for operation. If necessary, install extra air intake ducts.
- 3 When operating in a dust-laden atmosphere, place the unit so that dust is not carried towards it by the wind. Operation in clean surroundings considerably extends the intervals for cleaning the air intake filters and the cores of the coolers.
- 4 Never remove a filler cap of the cooling water system of a hot engine. Wait until the engine has sufficiently cooled down.
- 5 Never refill fuel while the unit is running, unless otherwise stated in the Chicago Pneumatic Instruction Book (AIB). Keep fuel away from hot parts such as air outlet pipes or the engine exhaust. Do not smoke when fuelling. When fuelling from an automatic pump, an earthing cable should be connected to the unit to discharge static electricity. Never spill nor leave oil, fuel, coolant or cleansing agent in or around the unit.
- 6 All doors shall be shut during operation so as not to disturb the cooling air flow inside the bodywork and/or render the silencing less effective. A door should be kept open for a short period only e.g. for inspection or adjustment.
- 7 Periodically carry out maintenance works according to the maintenance schedule.
- 8 Stationary housing guards are provided on all rotating or reciprocating parts not otherwise protected and which may be hazardous to personnel. Machinery shall never be put into operation, when such guards have been removed, before the guards are securely reinstalled.
- 9 Noise, even at reasonable levels, can cause irritation and disturbance which, over a long period of time, may cause severe injuries to the nervous system of human beings.  
When the sound pressure level, at any point where

- personnel normally has to attend, is:  
below 70 dB(A):no action needs to be taken,  
above 70 dB(A):noise-protective devices should be provided for people continuously being present in the room,  
below 85 dB(A):no action needs to be taken for occasional visitors staying a limited time only,  
above 85 dB(A):room to be classified as a noise-hazardous area and an obvious warning shall be placed permanently at each entrance to alert people entering the room, for even relatively short times, about the need to wear ear protectors,  
above 95 dB(A):the warning(s) at the entrance(s) shall be completed with the recommendation that also occasional visitors shall wear ear protectors,  
above 105 dB(A):special ear protectors that are adequate for this noise level and the spectral composition of the noise shall be provided and a special warning to that effect shall be placed at each entrance.
- 10 Insulation or safety guards of parts the temperature of which can be in excess of 80 °C (175 °F) and which may be accidentally touched by personnel shall not be removed before the parts have cooled to room temperature.
  - 11 Never operate the unit in surroundings where there is a possibility of taking in flammable or toxic fumes.
  - 12 If the working process produces fumes, dust or vibration hazards, etc., take the necessary steps to eliminate the risk of personnel injury.
  - 13 When using compressed air or inert gas to clean down equipment, do so with caution and use the appropriate protection, at least safety glasses, for the operator as well as for any bystander. Do not apply compressed air or inert gas to your skin or direct an air or gas stream at people. Never use it to clean dirt from your clothes.
  - 14 When washing parts in or with a cleaning solvent, provide the required ventilation and use appropriate protection such as a breathing filter, safety glasses, rubber apron and gloves, etc.
  - 15 Safety shoes should be compulsory in any workshop and if there is a risk, however small, of falling objects, wearing of a safety helmet should be included.
  - 16 If there is a risk of inhaling hazardous gases, fumes or dust, the respiratory organs must be protected and depending on the nature of the hazard, so must the eyes and skin.
  - 17 Remember that where there is visible dust, the finer,

- invisible particles will almost certainly be present too; but the fact that no dust can be seen is not a reliable indication that dangerous, invisible dust is not present in the air.
- 18 Never operate the generator in excess of its limits as indicated in the technical specifications and avoid long no-load sequences.
  - 19 Never operate the generator in a humid atmosphere. Excessive moisture causes worsening of the generator insulation.
  - 20 Do not open electrical cabinets, cubicles or other equipment while voltage is supplied. If such cannot be avoided, e.g. for measurements, tests or adjustments, have the action carried out by a qualified electrician only, with appropriate tools, and ascertain that the required bodily protection against electrical hazards is applied.
  - 21 Never touch the power terminals during operation of the machine.
  - 22 Whenever an abnormal condition arises, e.g. excessive vibration, noise, odour, etc., switch the circuit breakers to OFF and stop the engine. Correct the faulty condition before restarting.
  - 23 Check the electric cables regularly. Damaged cables and insufficient lightening of connections may cause electric shocks. Whenever damaged wires or dangerous conditions are observed, switch the circuit breakers to OFF and stop the engine. Replace the damaged wires or correct the dangerous condition before restarting. Make sure that all electric connections are securely tightened.
  - 24 Avoid overloading the generator. The generator is provided with circuit breakers for overload protection. When a breaker has tripped, reduce the concerned load before restarting.
  - 25 If the generator is used as stand-by for the mains supply, it must not be operated without control system which automatically disconnects the generator from the mains when the mains supply is restored.
  - 26 Never remove the cover of the output terminals during operation. Before connecting or disconnecting wires, switch off the load and the circuit breakers, stop the machine and make sure that the machine cannot be started inadvertently or there is any residual voltage on the power circuit.
  - 27 Running the generator at low load for long periods will reduce the lifetime of the engine.

## 0.5 SAFETY DURING MAINTENANCE AND REPAIR

Maintenance, overhaul and repair work shall only be carried out by adequately trained personnel; if required, under supervision of someone qualified for the job.

- 1 Use only the correct tools for maintenance and repair work, and only tools which are in good condition.
- 2 Parts shall only be replaced by genuine Chicago Pneumatic replacement parts.
- 3 All maintenance work, other than routine attention, shall only be undertaken when the unit is stopped. Steps shall be taken to prevent inadvertent starting. In addition, a warning sign bearing a legend such as "work in progress; do not start" shall be attached to the starting equipment.  
On engine-driven units the battery shall be disconnected and removed or the terminals covered by insulating caps.  
On electrically driven units the main switch shall be locked in open position and the fuses shall be taken out. A warning sign bearing a legend such as "work in progress; do not supply voltage" shall be attached to the fuse box or main switch.
- 4 Prior to stripping an engine or other machine or undertaking major overhaul on it, prevent all movable parts from rolling over or moving.
- 5 Make sure that no tools, loose parts or rags are left in or on the machine. Never leave rags or loose clothing near the engine air intake.
- 6 Never use flammable solvents for cleaning (fire-risk).
- 7 Take safety precautions against toxic vapours of cleaning liquids.
- 8 Never use machine parts as a climbing aid.
- 9 Observe scrupulous cleanliness during maintenance and repair. Keep away dirt, cover the parts and exposed openings with a clean cloth, paper or tape.
- 10 Never weld on or perform any operation involving heat near the fuel or oil systems. Fuel and oil tanks must be completely purged, e.g. by steam-cleaning, before carrying out such operations. Never weld on, or in any way modify, pressure vessels. Disconnect the alternator cables during arc welding on the unit.
- 11 Support the towbar and the axle(s) securely if working underneath the unit or when removing a wheel. Do not

rely on jacks.

- 12 Do not remove any of, or tamper with, the sound-damping material. Keep the material free of dirt and liquids such as fuel, oil and cleansing agents. If any sound-damping material is damaged, replace it to prevent the sound pressure level from increasing.
- 13 Use only lubricating oils and greases recommended or approved by Chicago Pneumatic or the machine manufacturer. Ascertain that the selected lubricants comply with all applicable safety regulations, especially with regard to explosion or fire-risk and the possibility of decomposition or generation of hazardous gases. Never mix synthetic with mineral oil.
- 14 Protect the engine, alternator, air intake filter, electrical and regulating components, etc., to prevent moisture ingress, e.g. when steam-cleaning.
- 15 When performing any operation involving heat, flames or sparks on a machine, the surrounding components shall first be screened with non-flammable material.
- 16 Never use a light source with open flame for inspecting the interior of a machine.
- 17 When repair has been completed, the machine shall be barred over at least one revolution for reciprocating machines, several revolutions for rotary ones to ensure that there is no mechanical interference within the machine or driver. Check the direction of rotation of electric motors when starting up the machine initially and after any alteration to the electrical connection(s) or switch gear, to check that the oil pump and the fan function properly.
- 18 Maintenance and repair work should be recorded in an operator's logbook for all machinery. Frequency and nature of repairs can reveal unsafe conditions.
- 19 When hot parts have to be handled, e.g. shrink fitting, special heat-resistant gloves shall be used and, if required, other body protection shall be applied.
- 20 When using cartridge type breathing filter equipment, ascertain that the correct type of cartridge is used and that its useful service life is not surpassed.
- 21 Make sure that oil, solvents and other substances likely to pollute the environment are properly disposed of.
- 22 Before clearing the generator for use after maintenance or overhaul, submit it to a testrun, check that the AC power performance is correct and that the control and shutdown devices function correctly.

## 0.6 TOOL APPLICATIONS SAFETY

Apply the proper tool for each job. With the knowledge of correct tool use and knowing the limitations of tools, along with some common sense, many accidents can be prevented.

Special service tools are available for specific jobs and should be used when recommended. The use of these tools will save time and prevent damage to parts.

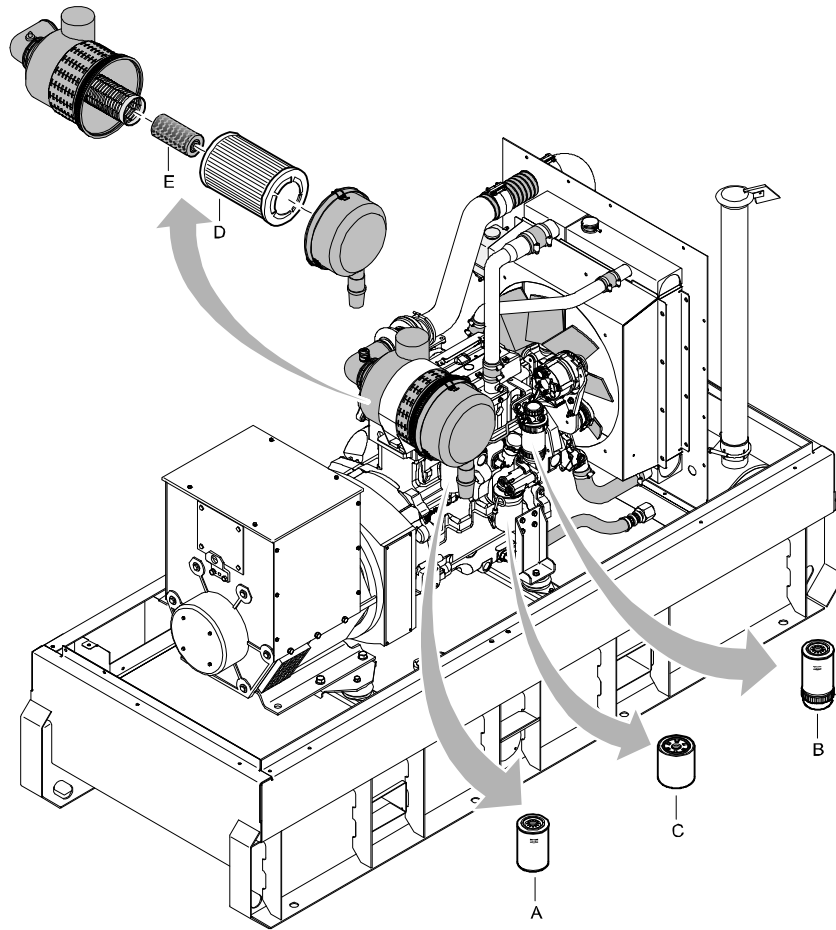
## 0.7 SPECIFIC SAFETY PRECAUTIONS

### Batteries

When servicing batteries, always wear protecting clothing and glasses.

- 1 The electrolyte in batteries is a sulphuric acid solution which is fatal if it hits your eyes, and which can cause burns if it contacts your skin. Therefore, be careful when handling batteries, e.g. when checking the charge condition.
- 2 Install a sign prohibiting fire, open flame and smoking at the post where batteries are being charged.
- 3 When batteries are being charged, an explosive gas mixture forms in the cells and might escape through the vent holes in the plugs.  
Thus an explosive atmosphere may form around the battery if ventilation is poor, and can remain in and around the battery for several hours after it has been charged. Therefore:
  - never smoke near batteries being, or having recently been, charged,
  - never break live circuits at battery terminals, because a spark usually occurs.
- 4 When connecting an auxiliary battery (AB) in parallel to the unit battery (CB) with booster cables: connect the + pole of AB to the + pole of CB, then connect the - pole of CB to the mass of the unit. Disconnect in the reverse order.

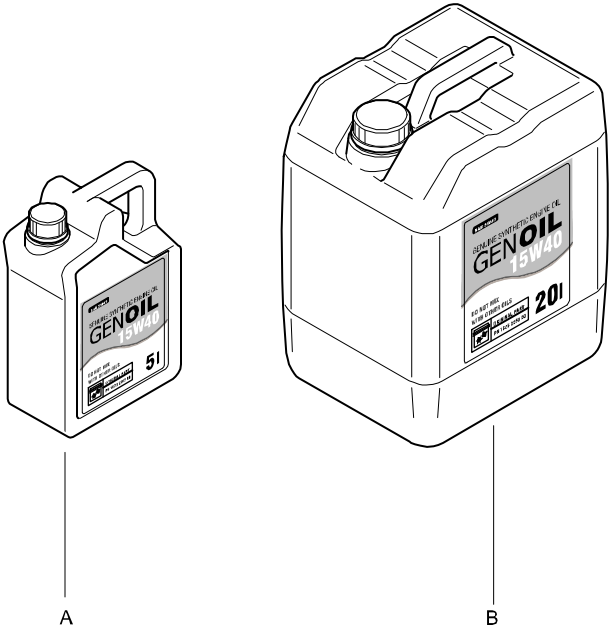
# SERVICE PAK



REF	PART NUMBER	DESIGNATION	QTY
-	1310 3004 45	SERVICE PAK 500HR	
•A	-	FUEL FILTER	1
•B	-	FUEL FILTER	1
•C	-	OIL FILTER	1
-	1310 3004 46	SERVICE PAK 1000HR	
•A	-	FUEL FILTER	1
•B	-	FUEL FILTER	1
•C	-	OIL FILTER	1
•D	-	AIR FILTER ELEMENT	1

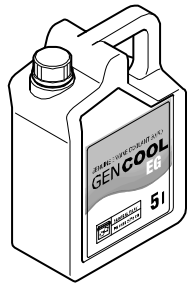
**ENGINE OIL - GENOIL 15W40**

REF	PART NUMBER	DESIGNATION	QTY
A	1626 2262 00	GENOIL 15W 40 (5 LITER)	1
B	1626 2263 00	GENOIL 15W 40 (20 LITER)	1

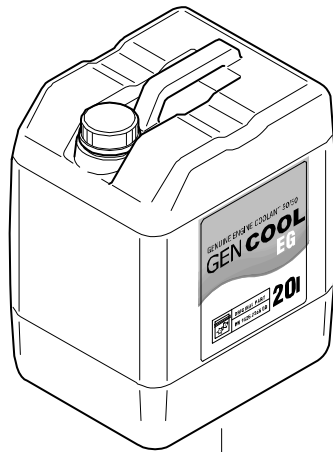


# ENGINE COOLANT - GENCOOL EG

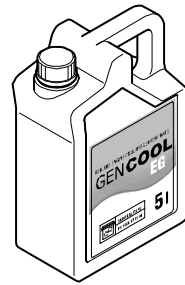
REF	PART NUMBER	DESIGNATION	QTY
A	1626 2255 00	GENCOOL EG (5 LITER)	1
B	1626 2257 00	GENCOOL EG (5 LITER) CONCENTRATE	1
C	1626 2256 00	GENCOOL EG (20 LITER)	1



A



B

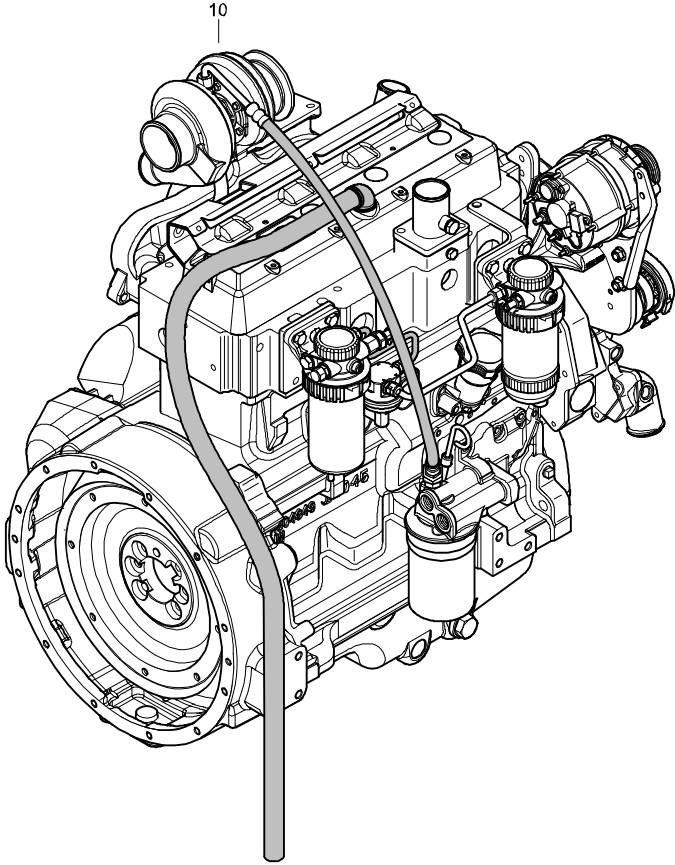


C



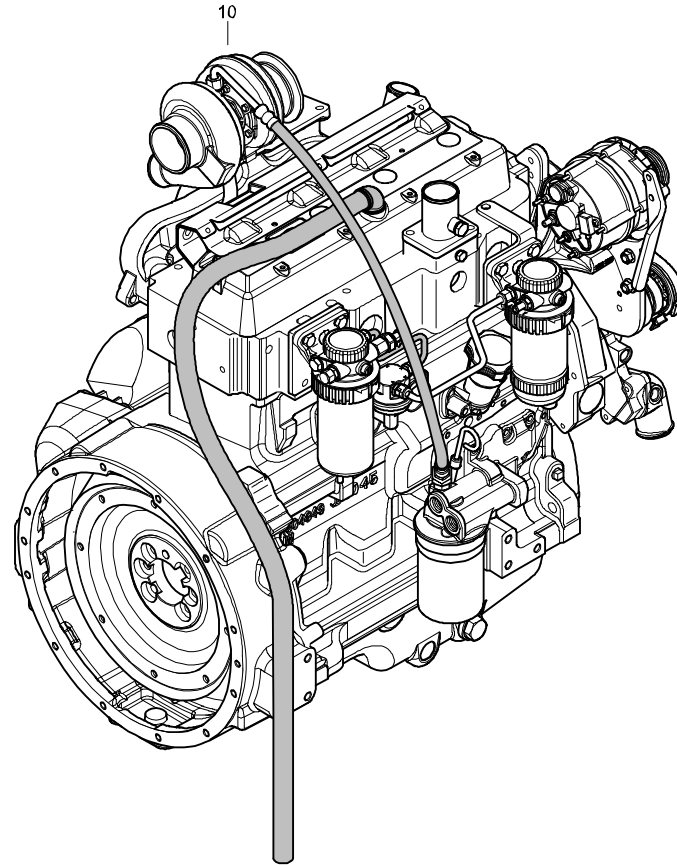
**ENGINE - CPG 70 - STANDARD**

<b>REF</b>	<b>PART NUMBER</b>	<b>DESIGNATION</b>	<b>QTY</b>
10	1310 0304 67	ENGINE	1

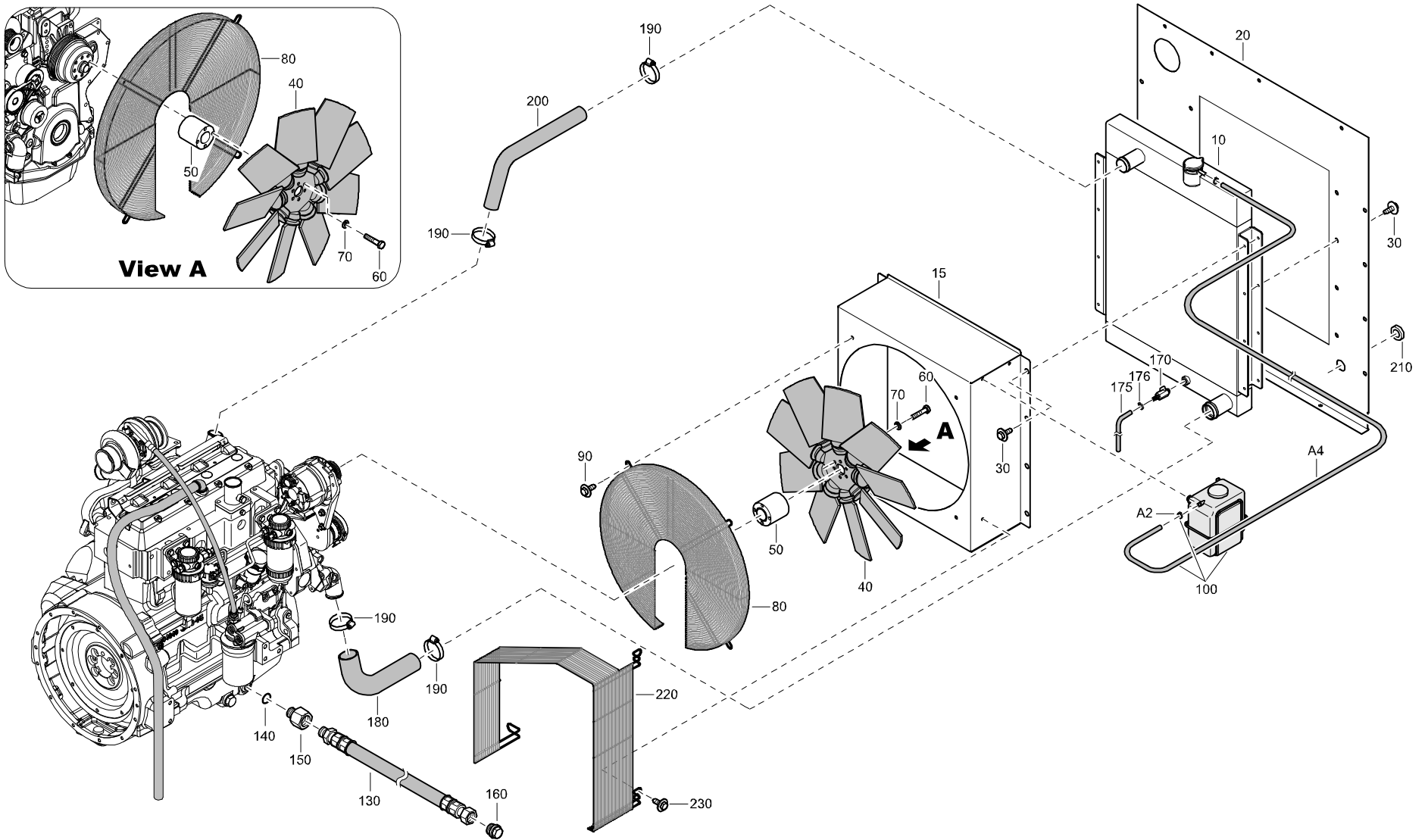
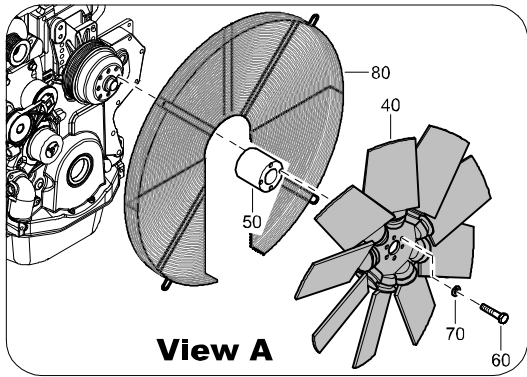


**ENGINE - CPG 90-120 - STANDARD**

<b>REF</b>	<b>PART NUMBER</b>	<b>DESIGNATION</b>	<b>QTY</b>
10	1310 0368 34	ENGINE	1



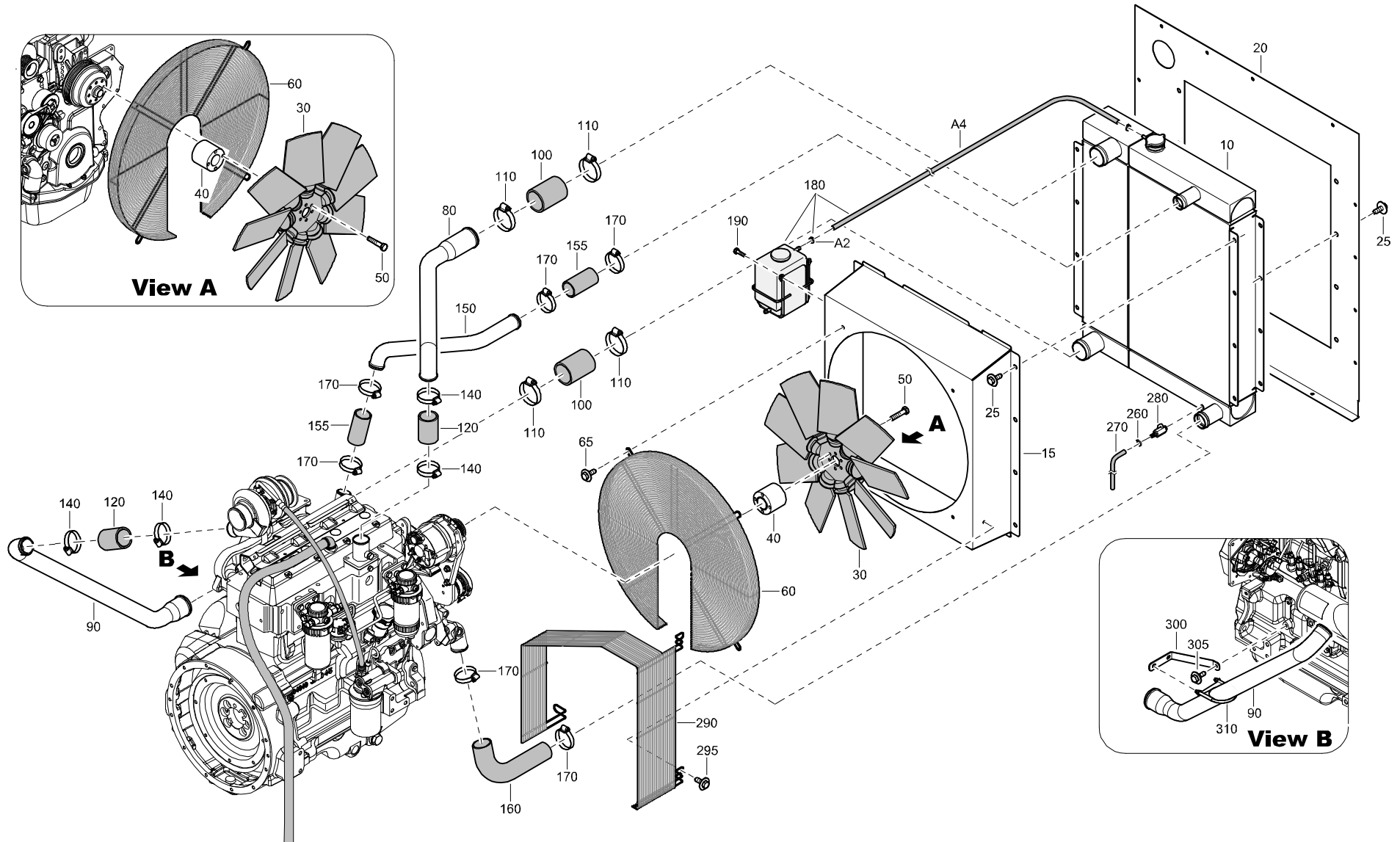
Radiator - CPG 70 - 1310 600 600  
Item 10



**COOLING SYSTEM - CPG 70 - STANDARD**

REF	PART NUMBER	DESIGNATION	QTY	REF	PART NUMBER	DESIGNATION	QTY	REF	PART NUMBER	DESIGNATION	QTY
15	1310 6008 00	FAN BOX	1								
20	1310 6007 00	SUPPORT COOLER	1								
30	1615 5664 00	SCRAPER BOLT	16								
40	1310 0363 65	FAN ENGINE	1								
50	1310 0354 82	SPACER ENGINE	1								
60	1310 0342 09	HEX SOC HEAD SCREW	1								
70	0333 2225 00	SPRING WASHER	1								
80	1310 0363 57	FAN GUARD	1								
90	1615 5664 00	SCRAPER BOLT	4								
100	1310 0343 72	KIT COOLANT RECOVER	1								
A2	1310 0323 84	HOSE CLAMP	1								
A4	1310 0315 92	HOSE	1								
130	1310 6000 25	HOSE ASSY	1								
140	0663 3122 00	O-RING	1								
150	1310 0354 87	ADAPTER	1								
160	1310 0355 25	PIPE PLUG	1								
170	1615 7072 00	VALVE	2								
175	1310 0355 56	HOSE	AR								
176	1310 0323 84	CLAMP	1								
180	1310 0349 31	HOSE	1								
190	0347 6113 00	CLAMP HOSE	4								
200	1310 0354 98	HOSE UPPER RADIATOR	1								
210	1310 0355 74	GROMMET	1								
220	1310 0359 95	FAN GUARD PULLY	1								
230	1619 2766 00	HEX HEAD SCREW	2								

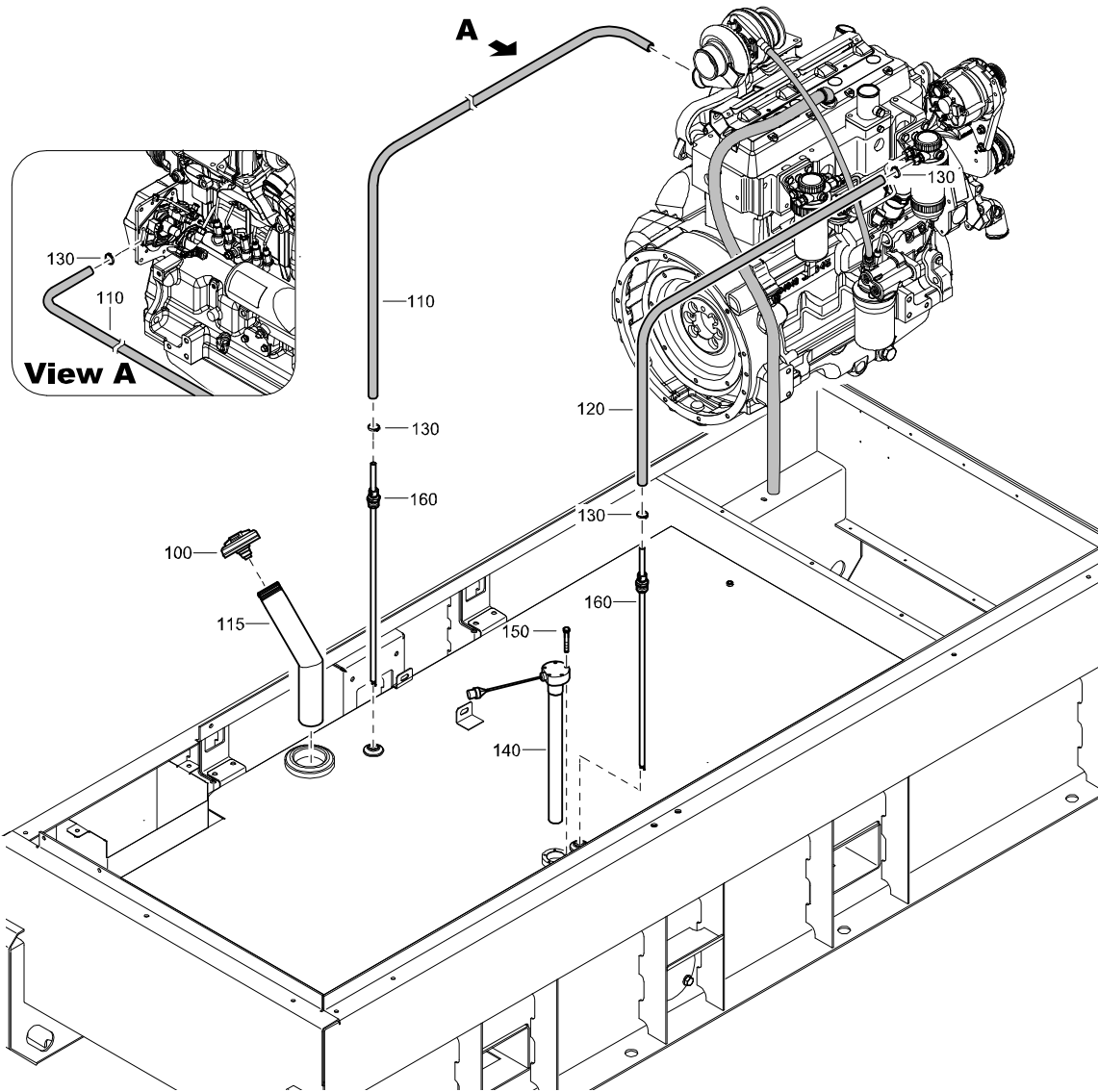
**COOLING SYSTEM - CPG 90-120 - STANDARD**



**COOLING SYSTEM - CPG 90-120 - STANDARD**

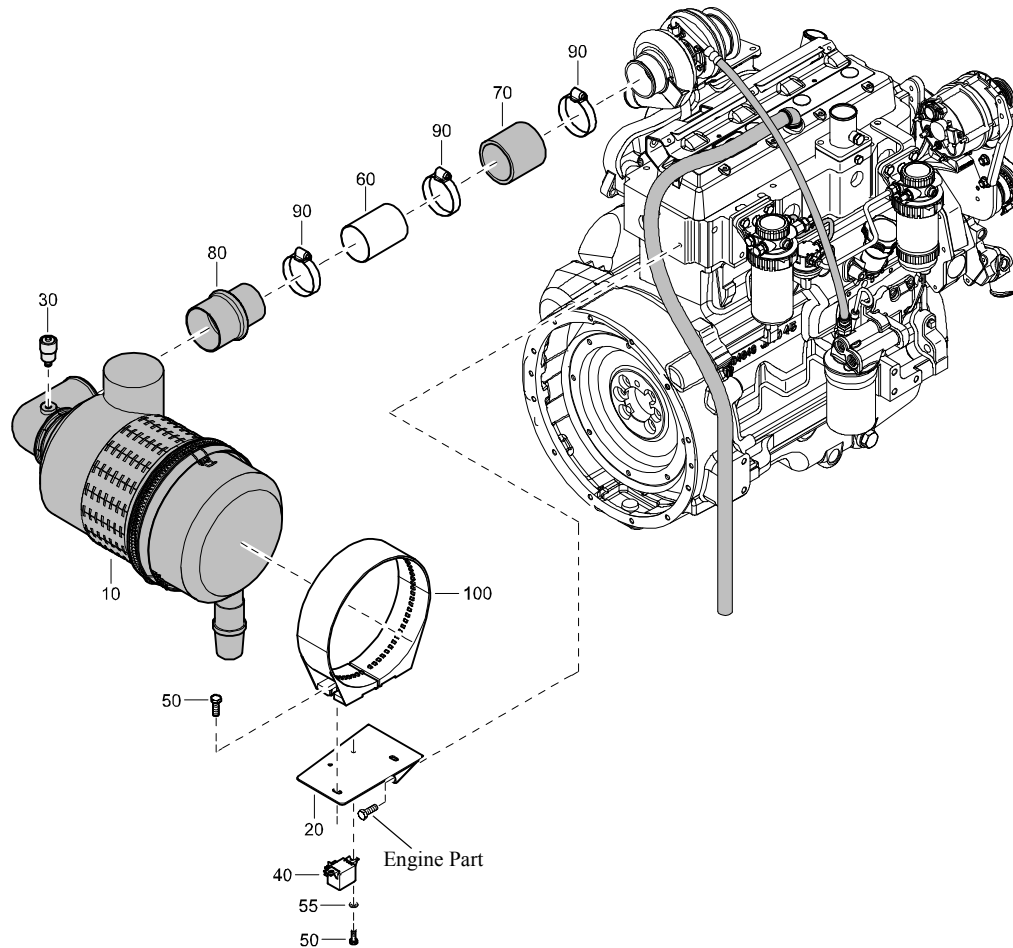
REF	PART NUMBER	DESIGNATION	QTY	REF	PART NUMBER	DESIGNATION	QTY	REF	PART NUMBER	DESIGNATION	QTY
10	1310 4388 00	RADIATOR	1								
15	1310 4395 00	FAN BOX	1								
20	1310 4394 00	SUPPORT COOLER	1								
25	1615 5664 00	SCRAPER BOLT	38								
30	1310 0354 80	FAN	1								
40	1310 4545 00	FAN SPACER	1								
50	0147 1327 03	HEX HD SCREW	4								
60	1310 0363 41	FAN GUARD	1								
65	1619 2766 00	HEX HD SCREW	4								
80	1310 4360 00	UPPER PIPE CAC	1								
90	1310 4361 00	LOWER PIPE CAC	1								
100	1310 0370 04	CONNECTOR CAC	2								
110	1310 0370 05	HOSE CLAMP	4								
120	1310 0370 07	HOSE CAC	AR								
140	1310 0355 13	HOSE CLAMP ENGINE INLET/TURBO	4								
150	1310 4007 00	COOLANT PIPE UPPER	1								
155	1310 0301 03	HOSE	2								
160	1310 0349 00	LOWER HOSE RADIATOR	1								
170	0347 6113 00	HOSE CLAMP	6								
180	1310 0343 72	KIT COOLANT RECOVERY SYSTEM	1								
A2	1310 0323 84	HOSE CLAMP	1								
A4	1310 0315 92	HOSE	1								
190	0147 1247 03	HEX HD SCREW	2								
260	1310 0323 84	HOSE CLAMP	1								
270	1310 0355 56	TUBE WALL	AR								
280	1615 7072 00	VALVE	1								
290	1310 0359 95	FAN GUARD PULLEY	1								
295	1619 2766 00	HEX HD SCREW	2								
300	1310 4471 00	SUPPORT CAC BRACKET	1								
305	1619 2766 00	HEX HD SCREW	3								
310	1310 1477 00	CLAMP	1								

**FUEL SYSTEM - STANDARD**



REF	PART NUMBER	DESIGNATION	QTY
100	1615 6947 01	FUELCAP	1
110	1310 0363 64	FUEL HOSE	AR
115	1310 4476 00	PIPE FUEL FILLER	1
120	1310 0311 98	FUEL HOSE	AR
130	1310 0323 84	HOSE CLAMP	4
140	1310 4524 00	FUEL LEVEL SENSOR	1
150	0147 1212 03	HEX HD SCREW	5
160	1310 4526 00	FUEL TUBE INLET/OUTLET	2

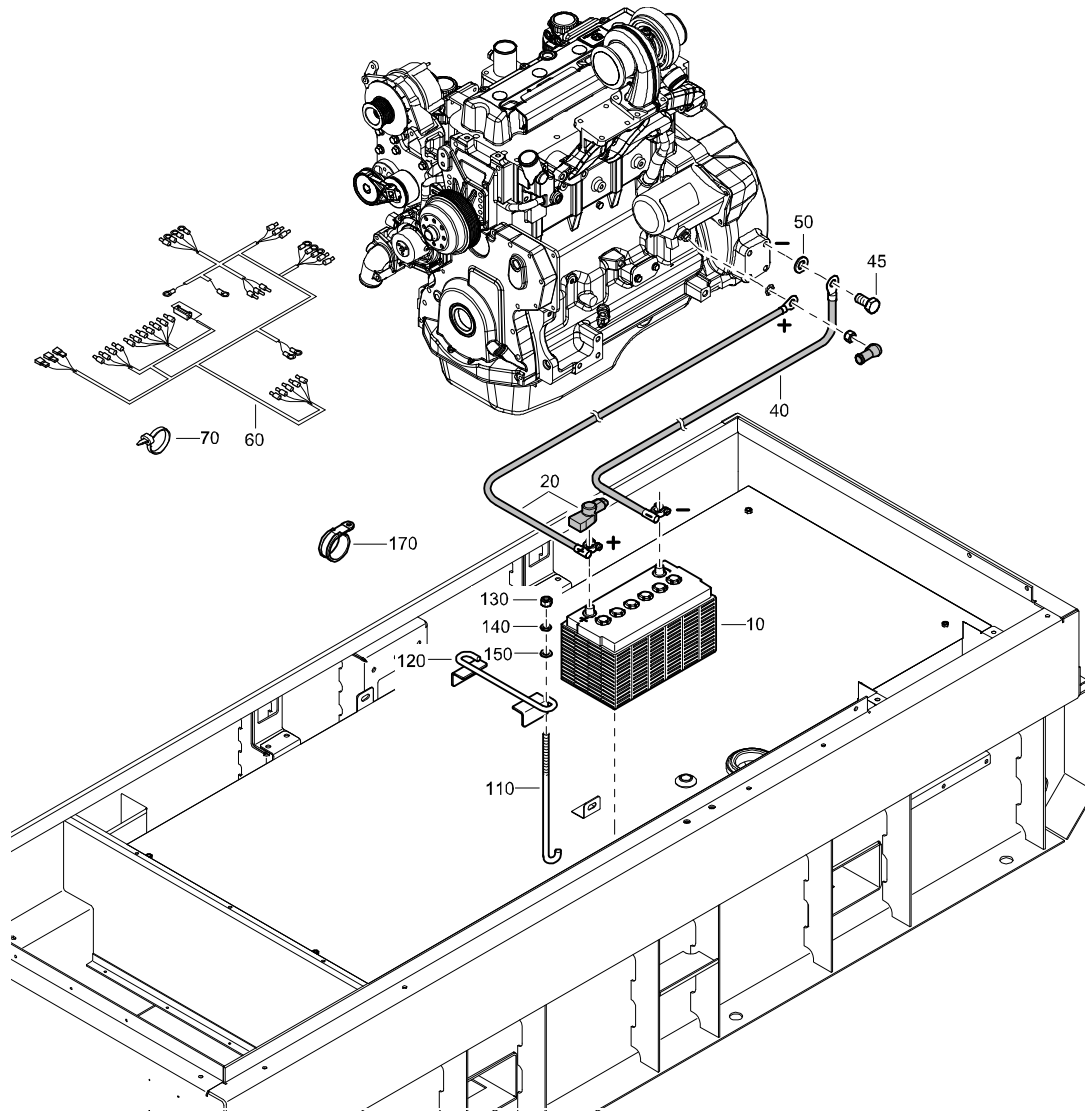
# AIR INLET - STANDARD



REF	PART NUMBER	DESIGNATION	QTY
10	1310 0354 97	AIR FILTER	1
20	1310 0353 80	AIR FILTER BRACKET	1
30	1310 0355 53	GAUGE	1
40	1310 0304 71	RELAY	1
50	0147 1246 03	HEX HD SCREW	2
55	0301 2321 00	FLAT WASHER	2
60	1310 4398 00	PIPE AIR INLET	1
70	1310 0345 23	HOSE AIR INLET	1
80	1310 0325 60	HUMP HOSE	1
90	0347 6131 00	HOSE CLAMP	3
100	0347 6131 00	HOSE CLAMP	1



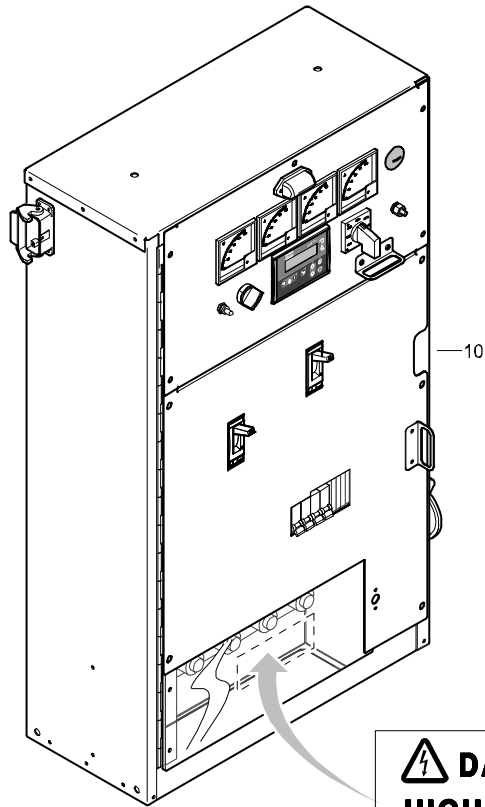
**ELECTRICAL SYSTEM - STANDARD**




REF	PART NUMBER	DESIGNATION	QTY
10	1310 0310 89	BATTERY	1
20	1310 0317 65	BATTERY CABLE	1
40	1310 0363 28	BATTERY CABLE	1
45	0147 1400 03	HEX HD SCREW	1
50	0301 2358 00	FLAT WASHER	1
60	1310 4448 00	WIRING HARNESS	1
70	1088 1301 02	CABLE TY	15
110	1310 0311 67	BOLT	2
120	1310 0311 66	BATTERY CLAMP	1
130	0268 3205 00	HEX NUT	2
140	0333 2225 00	SPRING WASHER	2
150	0301 2335 00	FLAT WASHER	2
170	1310 0325 89	CABLE CLAMP	2

**CUBICLE ASSEMBLY - CPG 70 Jd - STANDARD**

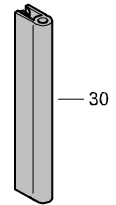
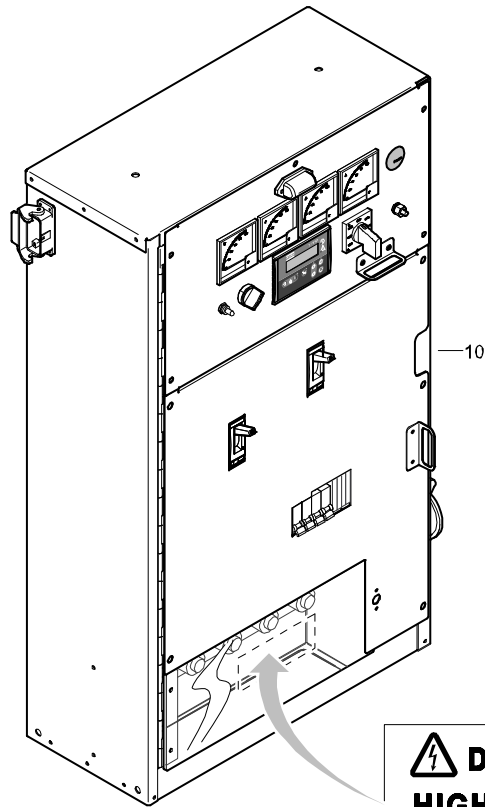
REF	PART NUMBER	DESIGNATION	QTY
10	1310 4695 81	CUBICLE ASSY (For details see page 48)	1
30	1310 4702 00	LABEL HIGH VOLTAGE	1



 <b>DANGER HIGH VOLTAGE</b>	SELECTOR SWITCH POSITION	BUS PANEL CONNECTION	CONNECTION VOLTAGE	MAX. AMPS
	277/480V 3 phase	L1-N L2-N L3-N L1-L2-L3	277vac 1,0PF 277vac 1,0PF 277vac 1,0PF 480vac 0,8PF	137 137 137 172
<b>CAUTION:</b> Do not operate selector switch while generator is running. Do not connect to bus panel while generator is running.	120/208V 3 phase	L1-N L2-N L3-N L1-L2-L3	120vac 1,0PF 120vac 1,0PF 120vac 1,0PF 208vac 0,8PF	291 291 291 364
	139/240V 3 phase	L1-N L2-N L3-N L1-L2-L3	139vac 1,0PF 139vac 1,0PF 139vac 1,0PF 240vac 0,8PF	275 275 275 344
Do not use L-3 terminal in single phase mode.	120/240V	L1-N L2-N L1-L2	120vac 1,0PF 120vac 1,0PF 240vac 1,0PF	364 364 364

**CUBICLE ASSEMBLY - CPG 90 Jd - STANDARD**

REF	PART NUMBER	DESIGNATION	QTY
10	1310 4367 81	CUBICLE ASSY <a href="#">(For details see page 50)</a>	1
30	1202 6584 00	SEAL	AR
40	1310 4641 00	LABEL HIGH VOLTAGE	1



**⚠ DANGER HIGH VOLTAGE**

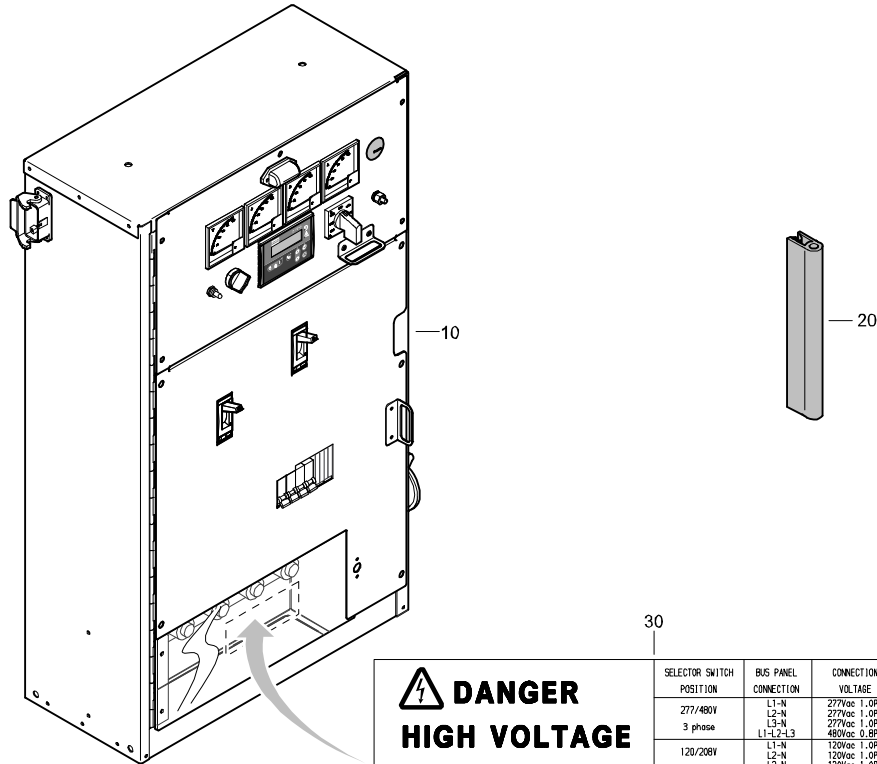
**CAUTION:**  
Do not operate selector switch while generator is running.  
Do not connect to bus panel while generator is running.

SELECTOR SWITCH POSITION	BUS PANEL CONNECTION	CONNECTION VOLTAGE	MAX. AMPS
277/480V 3 phase	L1-N	277vac 1.0PF	85
	L2-N	277vac 1.0PF	85
	L3-N	277vac 1.0PF	85
120/208V 3 phase	L1-L2-L3	480vac 0.8PF	108
	L1-N	120vac 1.0PF	200
	L2-N	120vac 1.0PF	200
139/240V 3 phase	L3-N	120vac 1.0PF	200
	L1-L2-L3	208vac 0.8PF	250
	L1-N	139vac 1.0PF	172
120/240V 1Ph L1-L2	L2-N	139vac 1.0PF	172
	L3-N	139vac 1.0PF	172
	L1-L2-L3	240vac 0.8PF	216
120/240V 1Ph L1-L2	L1-N	120vac 1.0PF	250
	L2-N	120vac 1.0PF	250
	L1-L2	240vac 1.0PF	250

Do not use L-3 terminal in single phase mode.

**CUBICLE ASSEMBLY - CPG 120 Jd - STANDARD**

REF	PART NUMBER	DESIGNATION	QTY
10	1310 4368 81	CUBICLE ASY (For details see page 52)	1
20	1202 6584 00	SEAL	AR
30	1310 4638 00	LABEL HIGH VOLTAGE	1



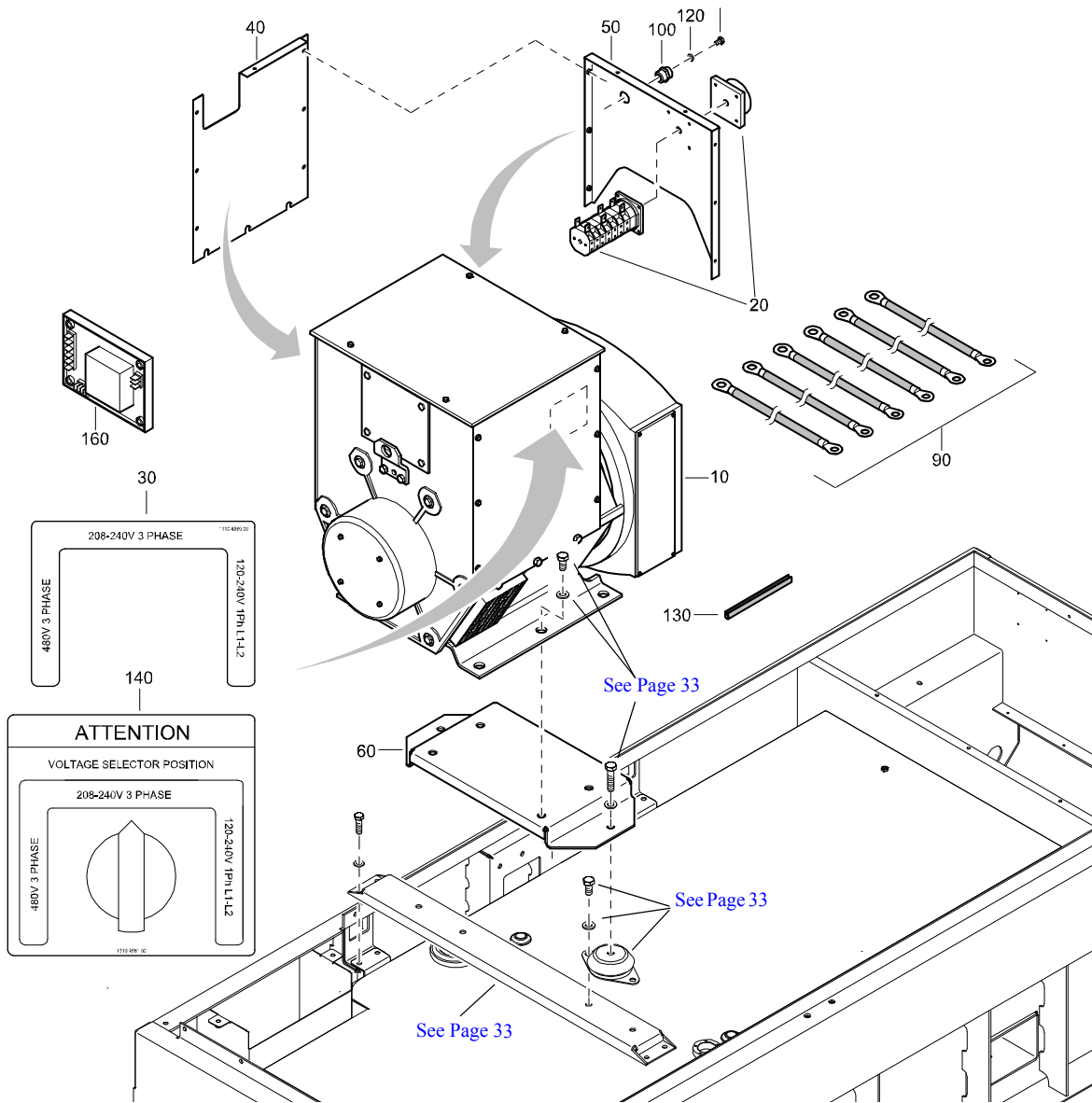
**⚡ DANGER HIGH VOLTAGE**

**CAUTION:**  
Do not operate selector switch while generator is running.  
Do not connect to bus panel while generator is running.

Do not use L-3 terminal in single phase mode.

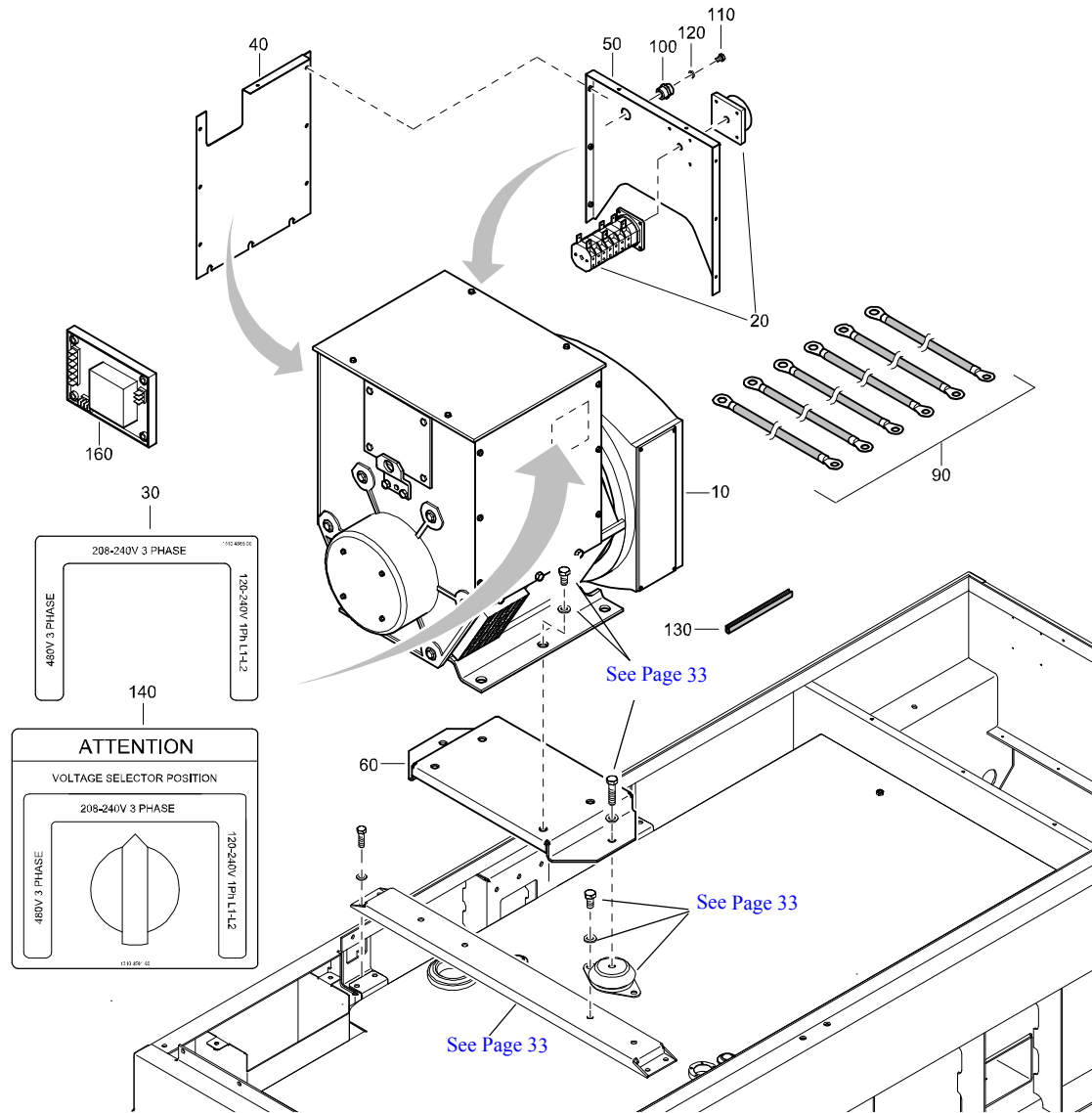
SELECTOR SWITCH POSITION	BUS PANEL CONNECTION	CONNECTION VOLTAGE	MAX. AMPS
277/480V 3 phase	L1-N	277Vac 1.0PF	137
	L2-N	277Vac 1.0PF	137
	L3-N	277Vac 1.0PF	137
	L1-L2-L3	480Vac 0.8PF	172
120/208V 3 phase	L1-N	120Vac 1.0PF	231
	L2-N	120Vac 1.0PF	231
	L3-N	120Vac 1.0PF	231
	L1-L2-L3	208Vac 0.8PF	364
139/240V 3 phase	L1-N	139Vac 1.0PF	275
	L2-N	139Vac 1.0PF	275
	L3-N	139Vac 1.0PF	275
	L1-L2-L3	240Vac 0.8PF	344
120/240V	L1-N	120Vac 1.0PF	364
	L2-N	120Vac 1.0PF	364
	L1-L2	240Vac 1.0PF	364

# ALTERNATOR ASSEMBLY - CPG 70 Jd - STANDARD



REF	PART NUMBER	DESIGNATION	QTY
10	1310 4673 00	ALTERNATOR	1
20	1089 9378 25	SELECTOR SWITCH	1
30	1310 4560 00	LABEL SELECTOR SWITCH VOLTAGES	1
40	1310 4538 00	PANEL ALTERNATOR	1
50	1310 4534 00	PLATE ALTERNATOR SWITCH	1
60	1310 4529 00	PLATE ALTERNATOR	1
90	1310 4642 00	WIRE SET	1
100	1089 9385 02	ISOLATOR	3
110	0147 1320 03	HEX HD SCREW	6
120	0333 3227 00	LOCKWASHER	6
130	1503 1056 00	SEAL	AR
140	1310 4561 00	LABEL SELECTOR SWITCH POSITION	1
160	<del>1089 9592 01</del>	ALTERNATOR VOLTAGE REGULATOR	1

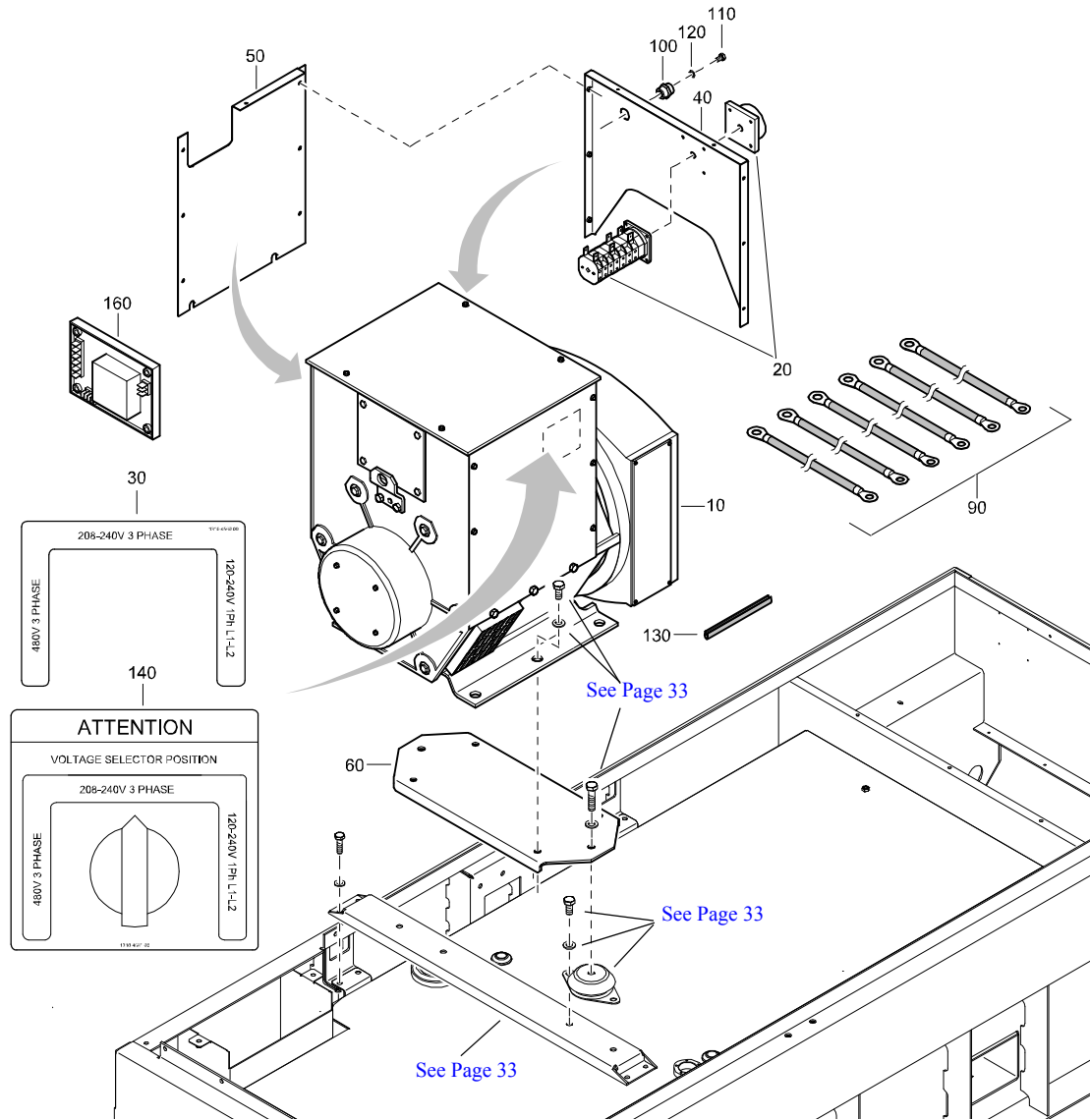
# ALTERNATOR ASSEMBLY - CPG 90 JD - STANDARD



REF	PART NUMBER	DESIGNATION	QTY
10	1310 4568 00	ALTERNATOR	1
20	1089 9378 25	SELECTOR SWITCH	1
30	1310 4560 00	LABEL SELECTOR SWITCH VOLTAGES	1
40	1310 4538 00	PANEL ALTERNATOR	1
50	1310 4534 00	PLATE ALTERNATOR SWITCH	1
60	1310 4529 00	PLATE ALTERNATOR	1
90	1310 4642 00	WIRE SET	1
100	1089 9385 02	ISOLATOR	3
110	0147 1320 03	HEX HD SCREW	6
120	0333 3227 00	LOCKWASHER	6
130	1503 1056 00	SEAL	AR
140	1310 4561 00	LABEL SELECTOR SWITCH POSITION	1
160	<del>1089 9592 01</del>	ALTERNATOR VOLTAGE REGULATOR	1

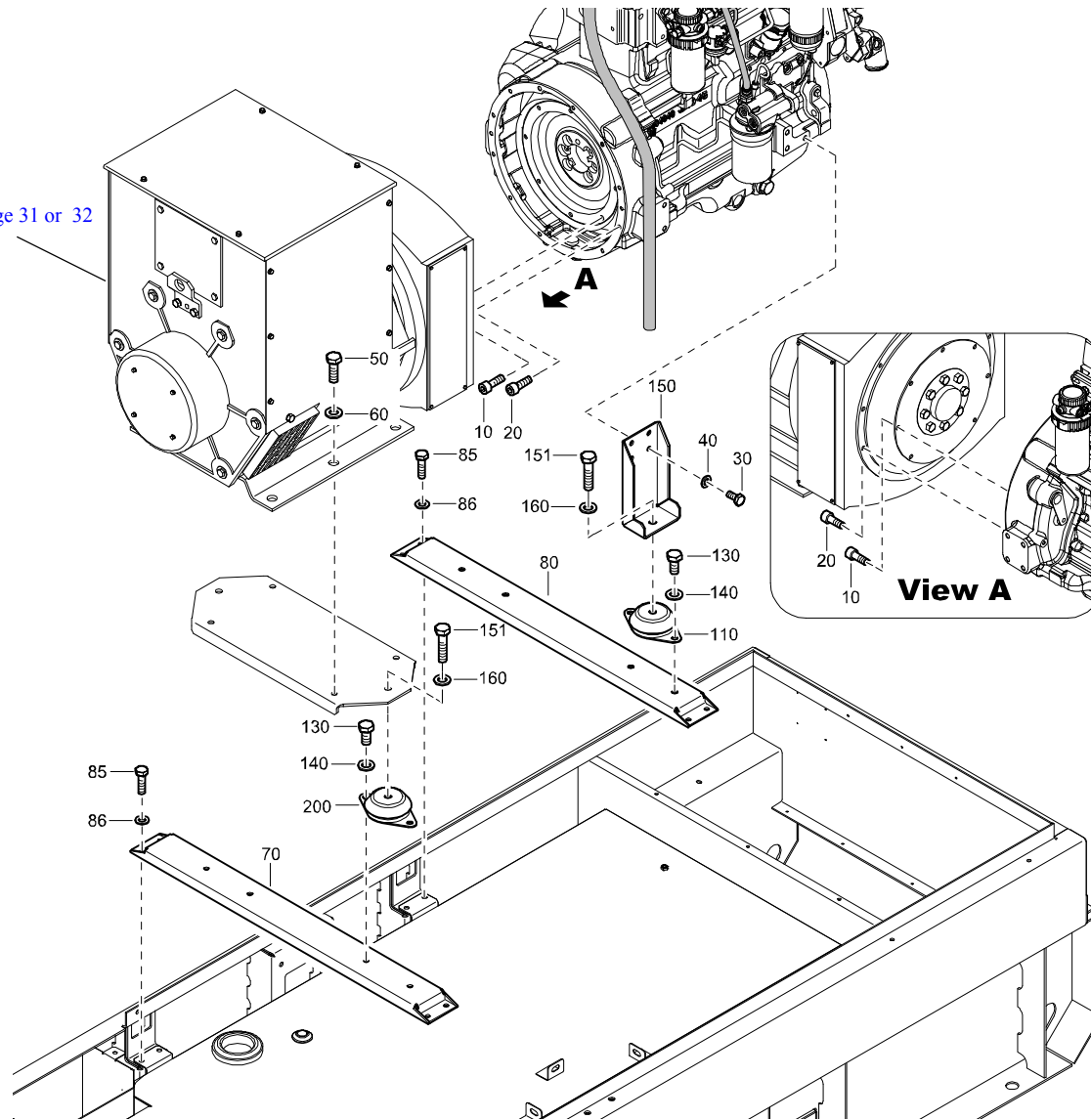
# ALTERNATOR ASSEMBLY - CPG 120 Jd - STANDARD

REF	PART NUMBER	DESIGNATION	QTY
10	1310 4570 00	ALTERNATOR	1
20	1089 9378 26	SELECTOR SWITCH	1
30	1310 4560 00	LABEL SELECTOR SWITCH VOLTAGES	1
40	1310 4535 00	PLATE ALTERNATOR SWITCH	1
50	1310 4536 00	PANEL ALTERNATOR	1
60	1310 4523 00	PLATE ALTERNATOR MOUNT	1
90	1310 4642 00	WIRE SET	1
100	1089 9385 02	ISOLATOR	3
110	0147 1320 03	HEX HD SCREW	6
120	0333 3227 00	LOCKWASHER	6
130	1503 1056 00	SEAL	AR
140	1310 4561 00	LABEL SELECTOR SWITCH POSITION	1
160	1089 9592 01	ALTERNATOR VOLTAGE REGULATOR	1



# FRAME AND MOUNTS - STANDARD

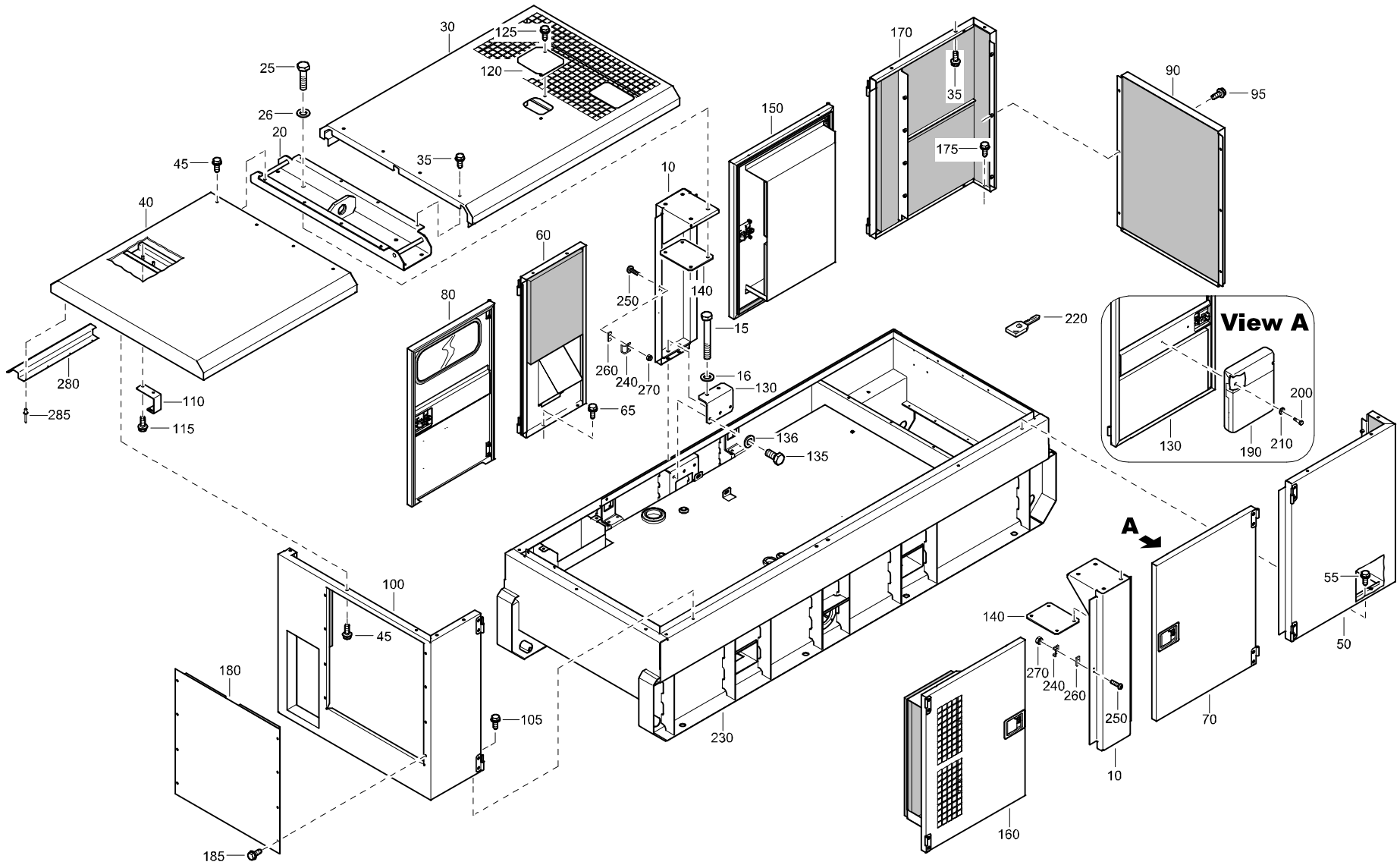
See Page 31 or 32



REF	PART NUMBER	DESIGNATION	QTY
10	0211 5287 00	SOC HD CAP SCREW	8
20	0211 1362 00	SOC HD CAP SCREW	12
30	0147 1400 03	HEX HD SCREW	6
40	0301 2358 00	FLAT WASHER	6
50	0147 1401 03	HEX HD SCREW	6
60	0301 2358 00	FLAT WASHER	6
70	1310 4421 00	SUPPORT CROSS RAIL	1
80	1310 4472 00	SUPPORT CROSS RAIL	1
85	0147 1363 03	HEX HD SCREW	8
86	0301 2344 00	FLAT WASHER	8
110	1619 6517 01	RUBBER BUFFER	2
130	0147 1400 03	HEX HD SCREW	8
140	0301 2358 00	FLAT WASHER	8
150	1310 4400 00	MOUNT-ENGINE	2
151	0147 1404 03	HEX HD SCREW	8
160	0301 2358 00	FLAT WASHER	4
200	1619 5044 00	VIBRATION MOUNT	2



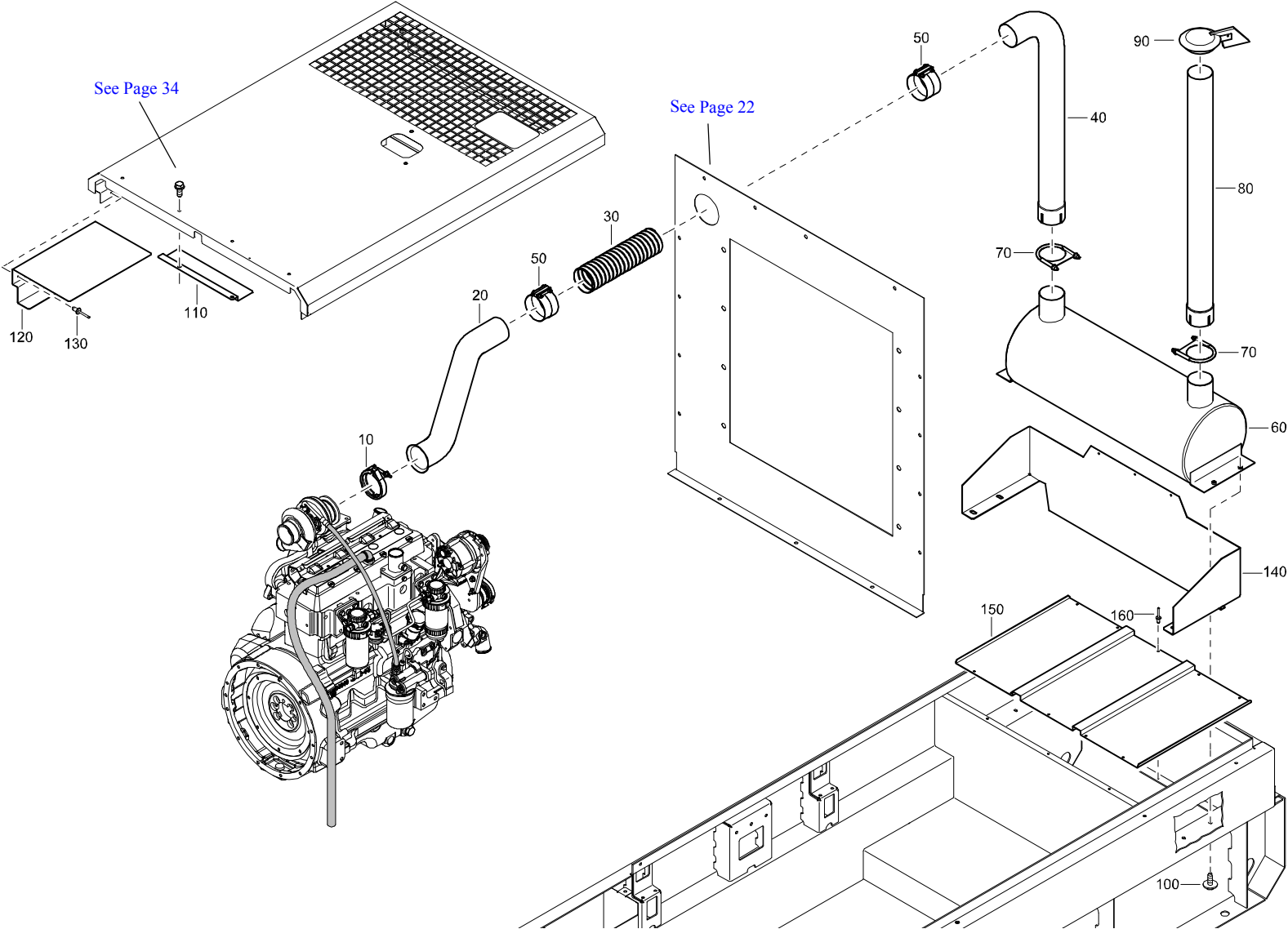
**BODYWORK - STANDARD**



**BODYWORK - STANDARD**

REF	PART NUMBER	DESIGNATION	QTY	REF	PART NUMBER	DESIGNATION	QTY	REF	PART NUMBER	DESIGNATION	QTY
10	1310 4408 22	SIDE SUPPORT	2	175	1619 2766 00	HEX HEAD SCREW	3				
15	0147 1413 03	HEX HEAD SCREW	4	180	1310 4528 80	PANEL ASSY REAR	1				
16	0301 2358 00	FLAT WASHER	4			(For details see page 65)					
20	1310 4409 22	LIFTING-BEAM	1	185	1619 2766 00	HEX HEAD SCREW	8				
25	0147 1403 03	HEX HEAD SCREW	8	190	1310 0356 39	DOCUMENT HOLDER	1				
26	0301 2358 00	FLAT WASHER	8	200	0144 3206 03	SCREW	2				
30	1310 4370 80	PANEL-ROOF ASY FRONT	1	210	0301 2327 00	FLAT WASHER	2				
		(For details see page 56)		220	1615 7271 00	KEY	2				
35	1619 2766 00	HEX HEAD SCREW	10	230	1310 3124 86	KIT FRAME SHEET METAL	1				
40	1310 4371 80	PANEL-ROOF ASY FRONT	1	240	1604 5031 00	BRACKET	5				
		(For details see page 57)		250	0215 0003 89	SCREW	10				
45	1619 2766 00	HEX HEAD SCREW	10	260	1310 4019 00	SPACER	5				
50	1310 4380 80	CORNER FRONT R	1	270	0291 1108 00	LOCKNUT	10				
		(For details see page 63)		280	1310 4373 00	RAIN GUARD CUBICLE	1				
55	1619 2766 00	HEX HEAD SCREW	3	285	0129 3172 01	BLIND RIVET	4				
60	1310 4374 80	PANEL-SIDE ASY	1								
		(For details see page 58)									
65	1619 2766 00	HEX HEAD SCREW	2								
70	1310 4375 80	DOOR-LARGE ASY L	1								
		(For details see page 59)									
80	1310 4377 80	DOOR-CUBICLE ASY	1								
		(For details see page 61)									
90	1310 4378 80	PANEL-FRONT ASY	1								
		(For details see page 60)									
95	1619 2766 00	HEX HEAD SCREW	6								
100	1310 4379 80	PANEL-REAR ASY	1								
		(For details see page 62)									
105	1619 2766 00	HEX HEAD SCREW	5								
110	1310 4533 00	BRACKET CUBICLE TO ROOF	1								
115	1619 2766 00	HEX HEAD SCREW	3								
120	1310 4477 00	COVER CANOPY	1								
125	1619 2766 00	HEX HEAD SCREW	2								
130	1310 4478 00	BRACKET LIFTING SUPPORT	2								
135	0147 1398 03	HEX HEAD SCREW	6								
136	0301 2358 00	FLAT WASHER	6								
140	1310 4480 00	PLATE LIFTING BEAM	2								
150	1310 4412 80	DOOR VENT FRONT	1								
		(For details see page 64)									
160	1310 4506 80	DOOR VENT REAR	1								
		(For details see page 66)									
170	1310 4542 80	CORNER FRONT L	1								
		(For details see page 68)									

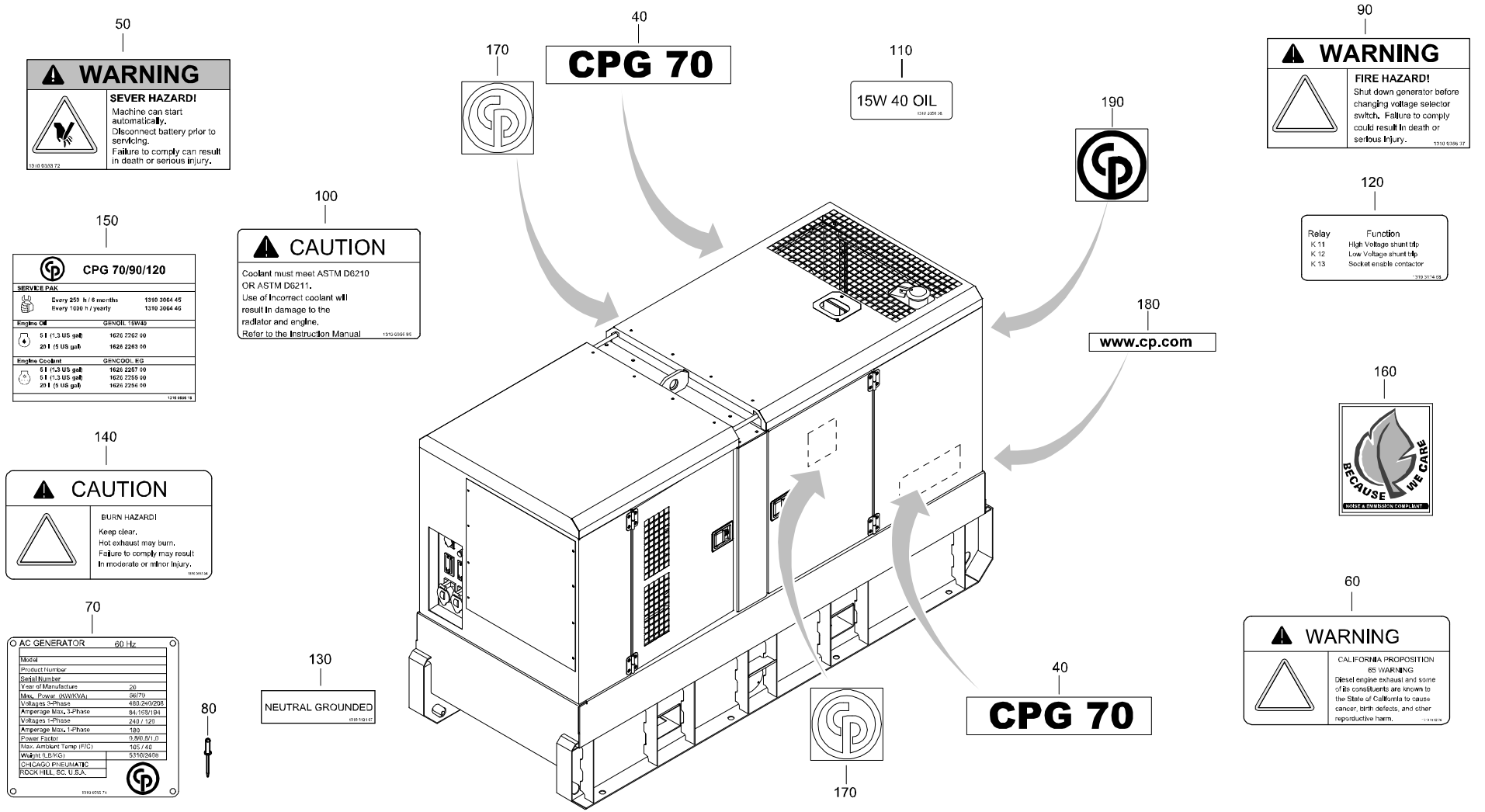
**EXHAUST - STANDARD**



## EXHAUST - STANDARD

REF	PART NUMBER	DESIGNATION	QTY	REF	PART NUMBER	DESIGNATION	QTY	REF	PART NUMBER	DESIGNATION	QTY
10	1310 0324 68	EXHAUST CLAMP V-BAND	1								
20	1310 4386 00	EXHAUST PIPE	1								
30	1310 4639 00	HOSE FLEX METAL	1								
40	1310 4385 00	EXHAUST PIPE	1								
50	1310 0356 46	EXHAUST CLAMP	2								
60	1310 4359 00	MUFFLER	1								
70	1310 0355 81	SADDLE CLAMP	2								
80	1310 4387 00	EXHAUST PIPE	1								
90	1310 0382 37	RAIN CAP	1								
100	1615 5664 00	SCRAPER BOLT	4								
110	1310 4635 00	PLATE HEAT DEFLECTOR	1								
120	1310 4636 00	SHIELD EXHAUST	1								
130	0129 3270 30	BLIND RIVET	4								
140	1310 4473 00	SHIELD HEAT EXHAUST	1								
150	1310 4481 00	PANEL EXHAUST	1								
160	0129 3270 30	BLIND RIVET	10								

# MARKINGS - CPG 70 - STANDARD



50

**WARNING**

**SEVERE HAZARD!**  
Machine can start automatically. Disconnect battery prior to servicing. Failure to comply can result in death or serious injury.

1310 0338 72

40

**CPG 70**

170

110

**15W 40 OIL**  
SAE J190

190

90

**WARNING**

**FIRE HAZARD!**  
Shut down generator before changing voltage selector switch. Failure to comply could result in death or serious injury.

1310 0366 17

120

Relay	Function
K 11	High Voltage shunt trip
K 12	Low Voltage shunt trip
K 13	Societ enable contactor

1310 0374 08

150

**CPG 70/80/120**

SERVICE DAK		
Every 250 h / 6 months	1310 3064 45	
Every 1000 h / yearly	1310 3064 46	
Engine Oil		
GENCOL 15W45		
5 l (1.3 US gal)	1626 2762 00	
20 l (5 US gal)	1626 2283 00	
Engine Coolant		
GENCOOL EG		
5 l (1.3 US gal)	1626 2287 00	
5 l (1.3 US gal)	1626 2256 00	
20 l (5 US gal)	1626 2236 00	

1310 0446 14

100

**CAUTION**

Coolant must meet ASTM D6210 OR ASTM D6211. Use of incorrect coolant will result in damage to the radiator and engine. Refer to the Instruction Manual.

1310 0593 95

180

[www.cp.com](http://www.cp.com)

160

**BECAUSE WE CARE**

WORLD & FRIENDSHIP COMPLIANT

140

**CAUTION**

**BURN HAZARD!**  
Keep clear. Hot exhaust may burn. Failure to comply may result in moderate or minor injury.

100 0011 14

70

**AC GENERATOR 60 Hz**

Model	
Product Number	
Serial Number	
Year of Manufacture	20
Max. Power (kW/MVA)	58779
Amperage Max, 3-Phase	480.240/208
Voltages 3-Phase	54.1/59.1/64
Voltages 1-Phase	240.1/120
Amperage Max, 1-Phase	180
Power Factor	0.8/0.8/1.0
Max. Ambient Temp (F/C)	105/42
Weight (LBS/KG)	5350/2425
CHICAGO PNEUMATIC	
ROCK HILL, SC, U.S.A.	

1310 0502 74

130

**NEUTRAL GROUNDED**

1310 1011 07

170

40

**CPG 70**

60

**WARNING**

**CALIFORNIA PROPOSITION 65 WARNING**  
Diesel engine exhaust and some of its constituents are known to the State of California to cause cancer, birth defects, and other reproductive harm.

1310 0214

**MARKINGS - CPG 70 - STANDARD**

<b>REF</b>	<b>PART NUMBER</b>	<b>DESIGNATION</b>	<b>QTY</b>	<b>REF</b>	<b>PART NUMBER</b>	<b>DESIGNATION</b>	<b>QTY</b>	<b>REF</b>	<b>PART NUMBER</b>	<b>DESIGNATION</b>	<b>QTY</b>
40	1310 6066 95	MODEL DESIGNATION	2								
50	1310 0353 72	LABEL WARNING	2								
60	1310 3112 36	LABEL CALIFORNIA EMISSIONS	1								
70	-	DATA PLATE	1								
		(Not available separately)									
80	1310 0361 69	BLIND RIVET	4								
90	1310 0356 37	LABEL WARNING ALTERNATOR	1								
100	1310 0356 95	LABEL	1								
110	1310 0356 38	LABEL	1								
120	1310 3124 68	LABEL	1								
130	1310 3124 67	LABEL NEUTRAL GROUNDED	1								
140	1310 0313 24	LABEL CAUTION HOT EXHAUST	1								
150	1310 6066 16	SERVICE LABEL	1								
160	1604 7907 02	LABEL	1								
170	1310 4527 01	LABEL CP LOGO	2								
180	1310 0720 96	LABELCP INTERNET ADDRESS	1								
190	1310 4527 00	CP LOGO	1								

# MARKINGS - CPG 90 - STANDARD

50

**WARNING**

**SEVERE HAZARD!**  
Machine can start automatically.  
Disconnect battery prior to servicing.  
Failure to comply can result in death or serious injury.

1310 0303 27

150

**CPG 70/90/120**

SERVICE PAK		
Every 250 h / 6 months	1310 3004 45	
Every 1000 h / yearly	1310 3004 46	
Engine Oil		
GENCOIL 15W40		
5 l (1.3 US gal)	1626 2262 00	
20 l (5 US gal)	1626 2263 00	
Engine Coolant		
GENCOOL EG		
5 l (1.3 US gal)	1626 2257 00	
5 l (1.3 US gal)	1626 2258 00	
20 l (5 US gal)	1626 2256 00	

1310 8868 17

140

**CAUTION**

**BURN HAZARD!**  
Keep clear.  
Hot exhaust may burn.  
Failure to comply may result in moderate or minor injury.

1310 8911 11

70

AC GENERATOR		60 Hz
Model		
Product Number		
Serial Number		
Year of Manufacture	20	
Max. Power (kW/kVA)	72/90	
Voltages 3-Phase	480/240/208	
Amperage Max. 3-Phase	106/216/250	
Voltages 1-Phase	240/1100	
Amperage Max. 1-Phase	250	
Power Factor	0.8/0.8/1.0	
Max. Ambient Temp. (°C)	105/140	
Weight (LBS/KG)	531/240	
CHICAGO PNEUMATIC		
ROCK HILL, SC, U.S.A.		

1310 8867 10

100

**CAUTION**

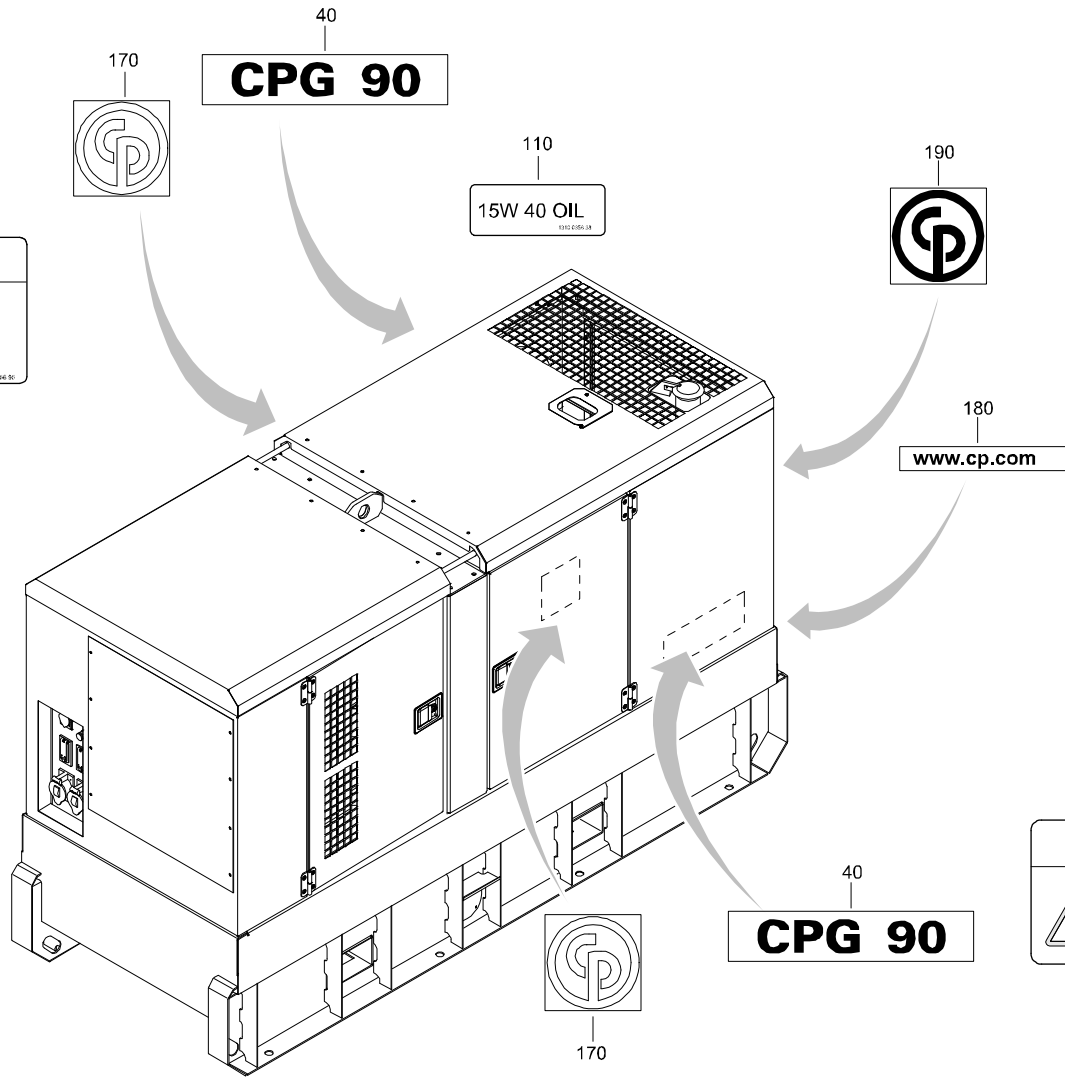
Coolant must meet ASTM D6210 OR ASTM D6211.  
Use of incorrect coolant will result in damage to the radiator and engine.  
Refer to the Instruction Manual

1310 0306 30

130

NEUTRAL GROUNDED

1310 27 02 03



90

**WARNING**

**FIRE HAZARD!**  
Shut down generator before changing voltage selector switch. Failure to comply could result in death or serious injury.

1310 0305 37

120

Relay	Function
K 11	High Voltage shunt trip
K 12	Low Voltage shunt trip
K 13	Socket enable contactor

1310 3124 01



60

**WARNING**

**CALIFORNIA PROPOSITION 65 WARNING**  
Diesel engine exhaust and some of its constituents are known to the State of California to cause cancer, birth defects, and other reproductive harm.

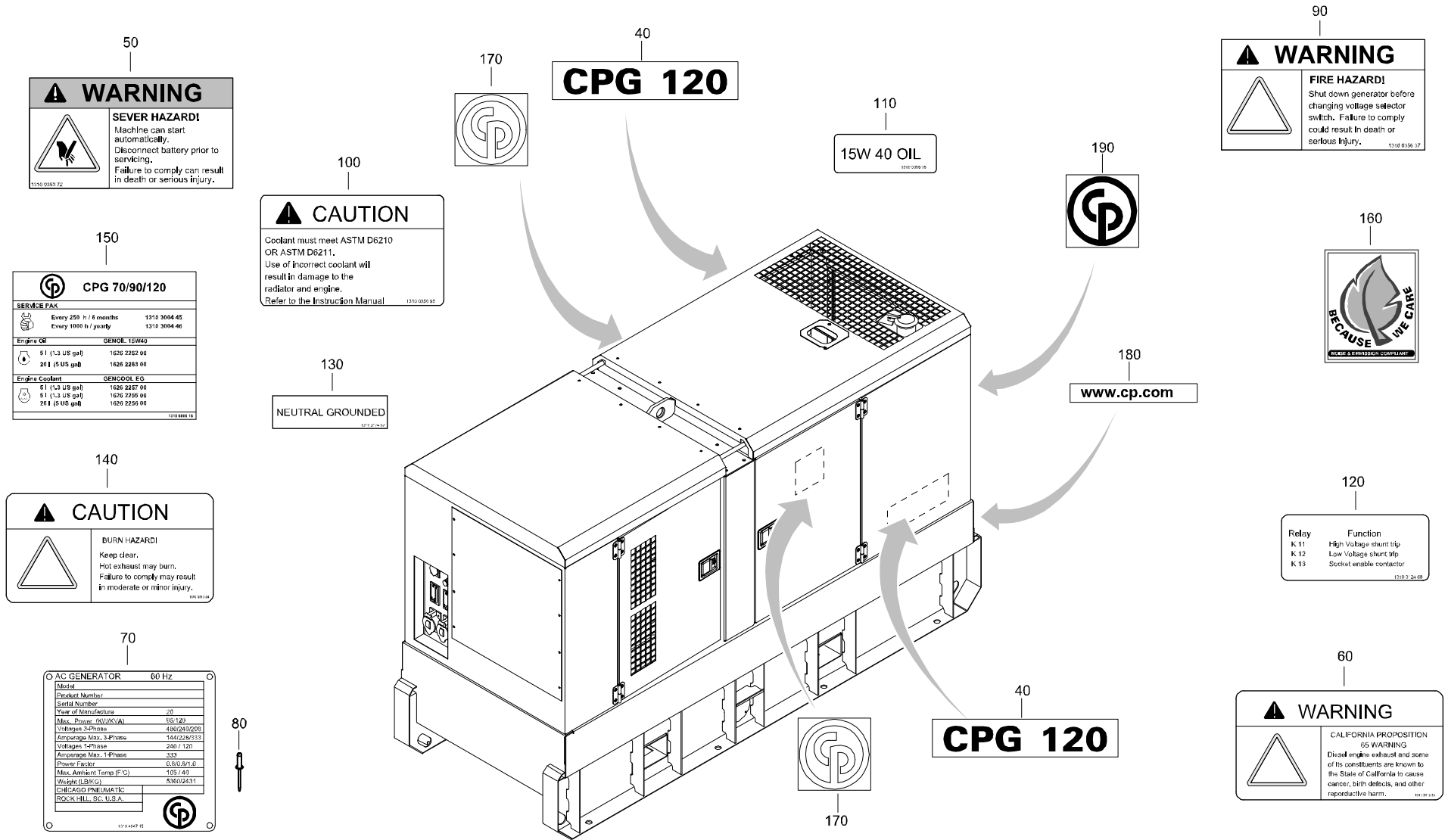
1310 0305 37

**MARKINGS - CPG 90 - STANDARD**

REF	PART NUMBER	DESIGNATION	QTY	REF	PART NUMBER	DESIGNATION	QTY	REF	PART NUMBER	DESIGNATION	QTY
40	1310 4172 00	MODEL DESIGNATION CPG 90	2								
50	1310 0353 72	LABEL WARNING	2								
60	1310 3112 36	LABEL CALIFORNIA EMISSIONS	1								
70	-	DATA PLATE (Not available separately)	1								
80	1310 0361 69	BLIND RIVET	4								
90	1310 0356 37	LABEL WARNING ALTERNATOR	1								
100	1310 0356 95	LABEL COOLANT	1								
110	1310 0356 38	LABEL OIL	1								
120	1310 3124 68	LABEL	1								
130	1310 3124 67	LABEL NEUTRAL GROUNDED	1								
140	1310 0313 24	LABEL CAUTION HOT EXHAUST	1								
150	1310 6066 16	SERVICE LABEL	1								
160	1604 7907 02	LABEL	1								
170	1310 4527 01	LABEL CP LOGO	2								
180	1310 0720 96	LABELCP INTERNET ADDRESS	1								
190	1310 4527 00	CP LOGO	1								



**MARKINGS - CPG 120 - STANDARD**



**50**

**WARNING**

**SEVER HAZARD!**  
Machine can start automatically. Disconnect battery prior to servicing. Failure to comply can result in death or serious injury.

1310 0353 72

**150**

**CPG 70/90/120**

SERVICE PACK		
Every 250 h / 6 months	1310 3004 45	
Every 1000 h / yearly	1310 3004 46	
Engine Oil		
5 l (1.3 US gal)	1626 2262 00	
20 l (5 US gal)	1626 2263 00	
Engine Coolant		
5 l (1.3 US gal)	1626 2267 00	
5 l (1.3 US gal)	1626 2256 00	
20 l (5 US gal)	1626 2256 00	

1310 0416 16

**140**

**CAUTION**

**BURN HAZARD!**  
Keep clear. Hot exhaust may burn. Failure to comply may result in moderate or minor injury.

103 9911 04

**70**

AC GENERATOR 60 Hz	
Model	
Product Number	
Serial Number	
Year of Manufacture	08
Max. Power (kW/HP(A))	15/120
Volts/Phases	480/240/208
Amperage Max. 3-Phase	144/228/333
Volts/Phase	240/120
Amperage Max. 1-Phase	333
Power Factor	0.50/0.67/0
Max. Ambient Temp (°C)	105/443
Weight (LBS/KG)	630/283.1
CHICAGO PNEUMATIC	
ROCK HILL, SC, U.S.A.	

1310 0427 16

**100**

**CAUTION**

Coolant must meet ASTM D6210 OR ASTM D6211. Use of incorrect coolant will result in damage to the radiator and engine. Refer to the Instruction Manual.

1310 0361 00

**130**

**NEUTRAL GROUNDED**

1310 0354 16

**110**

**15W 40 OIL**

1310 0356 75

**90**

**WARNING**

**FIRE HAZARD!**  
Shut down generator before changing voltage selector switch. Failure to comply could result in death or serious injury.

1310 0356 37



**120**

Relay	Function
K 11	High Voltage shunt trip
K 12	Low Voltage shunt trip
K 13	Socket enable contactor

1310 03 24 08

**60**

**WARNING**

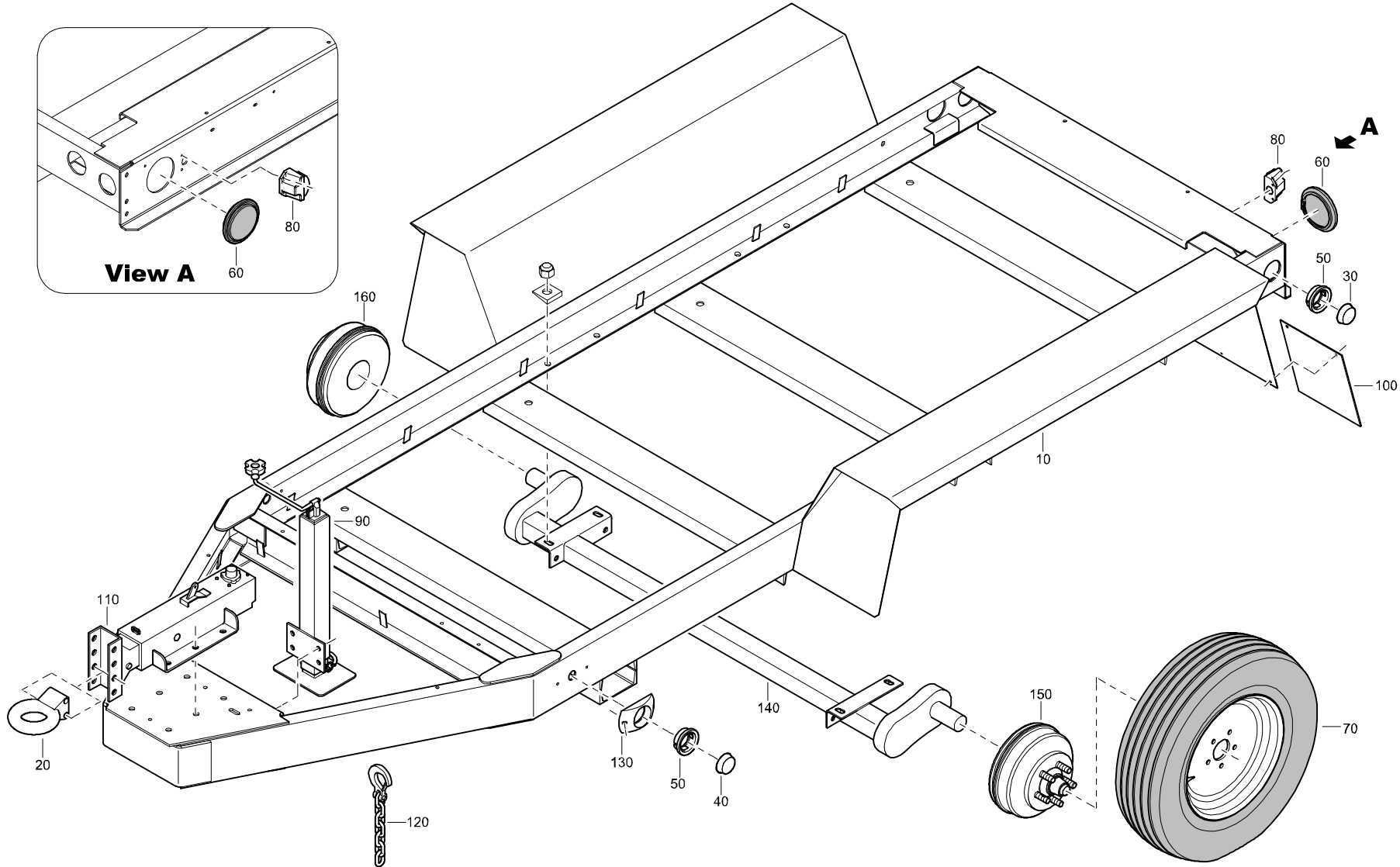
**CALIFORNIA PROPOSITION 65 WARNING**  
Diesel engine exhaust and some of its constituents are known to the State of California to cause cancer, birth defects, and other reproductive harm.

103 9911 03

**MARKINGS - CPG 120 - STANDARD**

REF	PART NUMBER	DESIGNATION	QTY	REF	PART NUMBER	DESIGNATION	QTY	REF	PART NUMBER	DESIGNATION	QTY
40	1310 4172 10	MODEL DESIGNATION CPG 120	2								
50	1310 0353 72	LABEL WARNING	2								
60	1310 3112 36	LABEL CALIFORNIA EMISSIONS	1								
70	-	DATA PLATE	1								
		(Not available separately)									
80	1310 0361 69	BLIND RIVET	4								
90	1310 0356 37	LABEL WARNING ALTERNATOR	1								
100	1310 0356 95	LABEL COOLANT	1								
110	1310 0356 38	LABEL OIL	1								
120	1310 3124 68	LABEL	1								
130	1310 3124 67	LABEL NEUTRAL GROUNDED	1								
140	1310 0313 24	LABEL CAUTION HOT EXHAUST	1								
150	1310 6066 16	SERVICE LABEL	1								
160	1604 7907 02	LABEL	1								
170	1310 4527 01	LABEL CP LOGO	2								
180	1310 0720 96	LABELCP INTERNET ADDRESS	1								
190	1310 4527 00	CP LOGO	1								

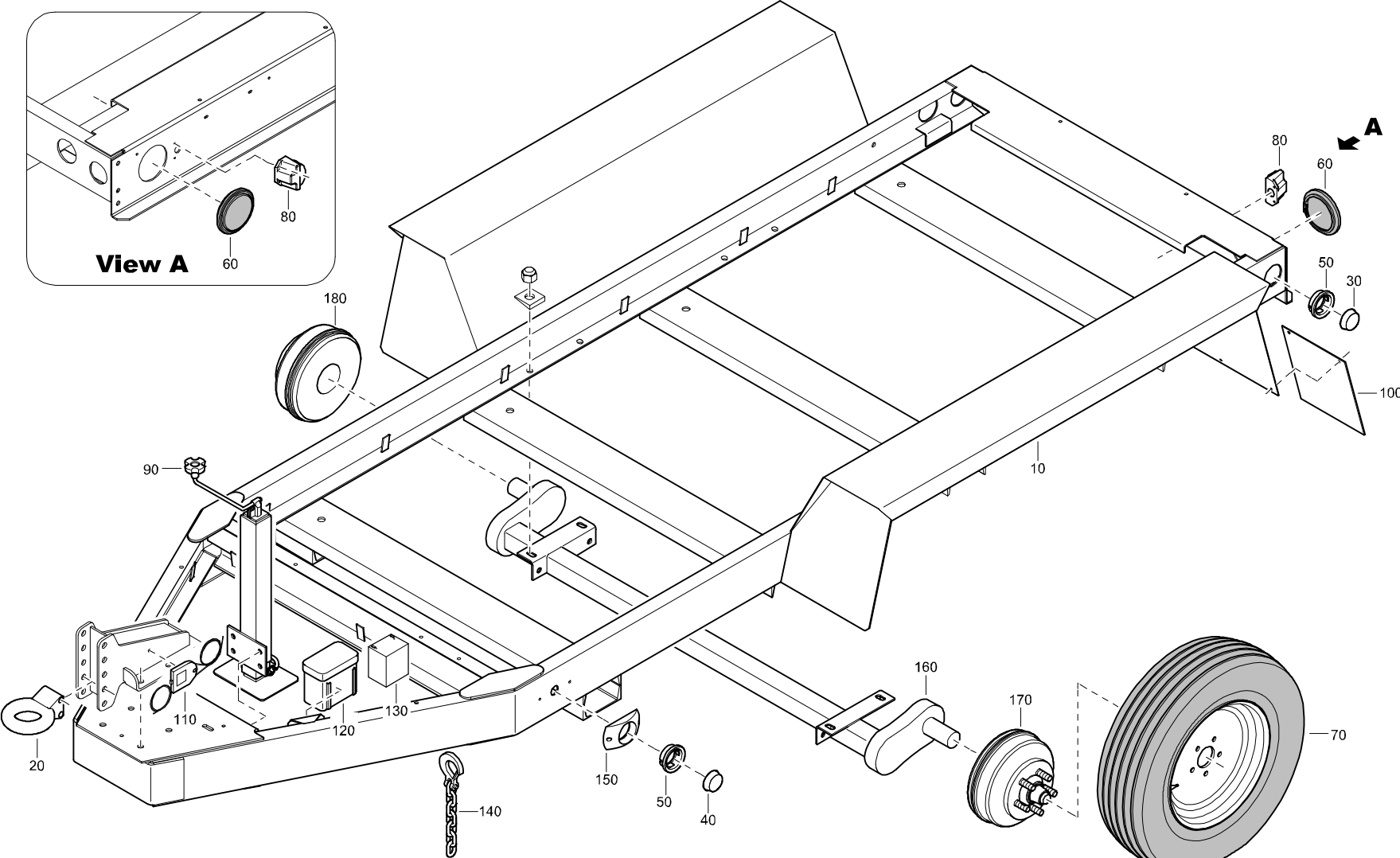
**TRAILER ASSEMBLY - HYDRAULIC BRAKE**



## TRAILER ASSEMBLY - HYDRAULIC BRAKE

REF	PART NUMBER	DESIGNATION	QTY	REF	PART NUMBER	DESIGNATION	QTY	REF	PART NUMBER	DESIGNATION	QTY
10	8070 2909 55	TRAILER-HYDRAULIC BRAKE	1								
20	1310 0346 73	TOWING EYE	1								
30	1310 0347 42	RED LIGHT	2								
40	1310 0347 43	YELLOW LIGHT	2								
50	1310 0346 89	GROMMET	4								
60	1310 0347 45	SEAL	2								
70	1310 0348 56	WHEEL-TIRE ASSY	4								
80	1310 0347 33	LAMP LICENSE PLATE	1								
90	1310 0347 11	JACK TONGUE	1								
100	1310 0347 65	MUDFLAP	2								
110	1310 0345 82	ACTUATOR	1								
120	1310 0346 45	SAFETY CHAIN	2								
130	1310 0362 73	MOUNT LIGHT	2								
140	1310 0305 28	AXEL ASSY	2								
150	1310 0305 30	BRAKE ASSY RH	2								
160	1310 0305 31	BRAKE ASSY LH	2								

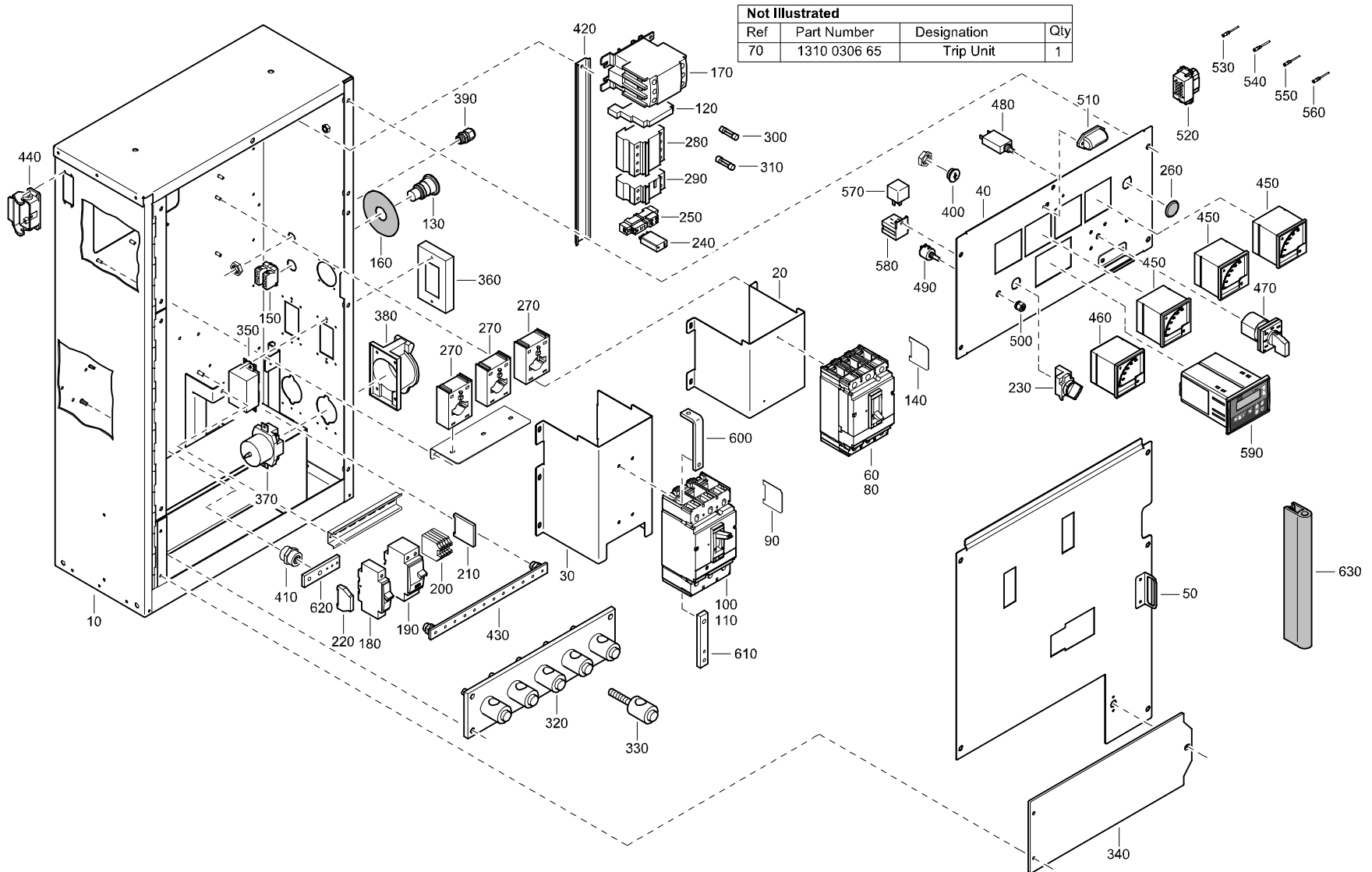
**TRAILER ASSEMBLY - ELECTRIC BRAKE**



## TRAILER ASSEMBLY - ELECTRIC BRAKE

REF	PART NUMBER	DESIGNATION	QTY	REF	PART NUMBER	DESIGNATION	QTY	REF	PART NUMBER	DESIGNATION	QTY
10	8070 2910 21	TRAILER ELECTRIC BRAKE	1								
20	1310 0346 73	TOWING EYE	1								
30	1310 0347 42	RED LIGHT	2								
40	1310 0347 43	YELLOW LIGHT	2								
50	1310 0346 89	GROMMET	4								
60	1310 0347 45	SEAL	2								
70	1310 0348 56	WHEEL-TIRE ASSY	4								
80	1310 0347 33	LAMP LICENSE PLATE	1								
90	1310 0347 11	JACK TONGUE	1								
100	1310 0347 65	MUDFLAP	1								
110	1310 0348 30	BREAKAWAY SWITCH	1								
120	1310 0351 44	BATTERY BOX	1								
130	1310 0351 45	BATTERY	1								
140	1310 0346 45	SAFETY CHAIN	2								
150	1310 0362 73	MOUNT LIGHT	2								
160	1310 0305 29	AXEL ASSY	2								
170	1310 0305 32	BRAKE ASSY RH	2								
180	1310 0305 33	BRAKE ASSY LH	2								

**CUBICLE ASSEMBLY - CPG 70 Jd - STANDARD**

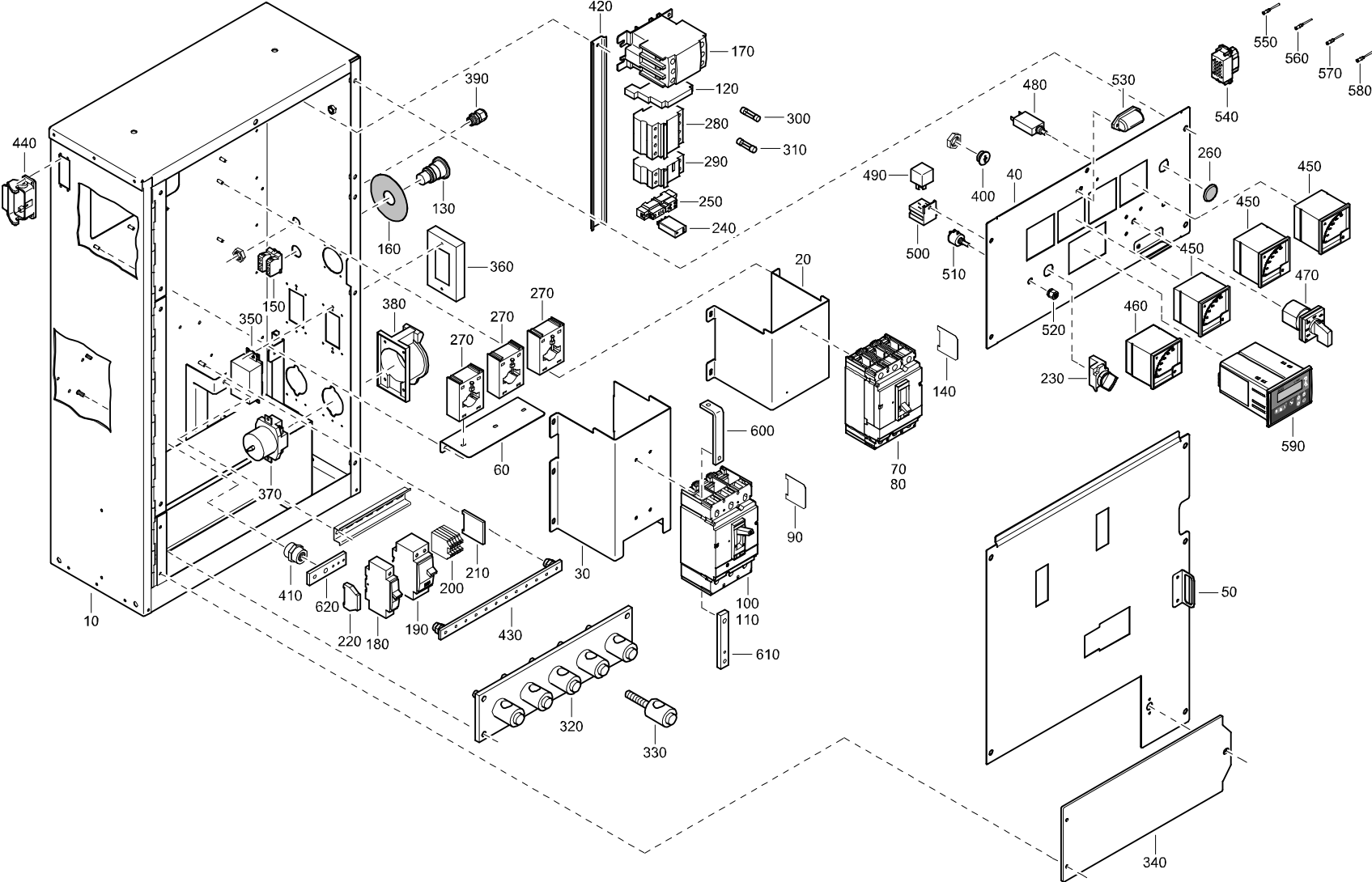


**CUBICLE ASSEMBLY - CPG 70 Jd - STANDARD**

REF	PART NUMBER	DESIGNATION	QTY	REF	PART NUMBER	DESIGNATION	QTY	REF	PART NUMBER	DESIGNATION	QTY
-	1310 4395 81	CUBICLE ASSY (From page 27)		360	1089 9412 11	PROTECTION	2				
10	1310 4399 01	CUBICLE SHEET METAL	1	370	1089 9412 02	RECEPTACLE	2				
20	1310 4399 44	BRACKET	1	380	1089 9412 12	PROTECTION	2				
30	1310 4399 45	BRACKET	1	390	0698 5140 71	CABLE GLAND	1				
40	1310 4399 50	PANEL	1	400	0697 9810 58	PLUG	1				
50	1310 4399 51	BRACKET	1	410	1089 9385 03	ISOLATOR	1				
20	1310 4402 01	SUPPORT	1	420	0993 7106 00	RAIL DIN MOUNTING	AR				
30	1310 4422 01	BRACKET CB SUPPORT	1	430	1310 0306 61	ISOLATOR	1				
40	1310 4369 01	PANEL CONTROL	1	440	1088 0029 50	HOUSING	1				
50	1310 4423 01	PANEL CUBICLE DOOR	1	450	1089 9381 18	AMMETER	3				
60	1310 0307 25	CIRCUIT BREAKER	1	460	1089 9383 01	VOLTMETER	1				
70	1310 0306 65	TRIP UNIT	1	470	1089 9082 22	SWITCH	1				
80	1310 0306 45	SHUNT TRIP	1	480	1089 9423 01	FUSE	1				
90	1310 0307 14	BARRIER	1	490	1089 9371 21	POTMETER	1				
100	1310 0307 26	CIRCUIT BREAKER	1	500	1089 9371 50	LOCK	1				
110	1310 0306 45	SHUNT TRIP	1	510	1310 0307 18	LIGHT PETERSEN	1				
120	1310 0306 44	CONTACT AUXILIARY	1	520	1088 0029 45	INSERT MALE	1				
130	1310 0306 47	EMERGENCY STOP	1	530	1088 0029 57	CONTACT MALE	1				
140	1310 0307 22	BARRIER PHASE	1	540	1088 0029 61	CONTACT MALE	5				
150	1310 0306 48	CONTACT BLOCK	1	550	1088 0029 56	CONTACT MALE	1				
160	1310 0306 49	LABEL EMERGENCY STOP	1	560	1088 0029 55	CONTACT MALE	3				
170	1310 0306 50	CONTACTOR	1	570	1310 0306 62	RELAY	2				
180	1310 0306 51	CIRCUIT BREAKER	2	580	1310 0306 63	RELAY BASE	2				
190	1310 0306 52	CIRCUIT BREAKER	2	590	1604 9418 00	CONTROLLER	1				
200	1310 0306 53	TERMINAL BLOCK	5	600	1310 0307 23	BUSBAR	3				
210	1310 0306 54	BARRIER	1	610	1310 0307 20	BUSBAR	3				
220	1310 0306 55	TERMINAL END STOP	2	620	1310 0307 21	BUSBAR	1				
230	1089 0263 27	SELECTOR SWITCH	1	630	1202 6584 00	SEAL EDGE	AR				
240	1310 0306 56	RELAY	2								
250	1310 0306 57	RELAY BASE	2								
260	1310 0307 16	PLUG	1								
270	1089 9484 65	TRANSFORMER	3								
280	1310 0306 58	FUSEHOLDER	1								
290	1310 0306 59	FUSEHOLDER	1								
300	1310 0307 17	FUSE	3								
310	1310 0306 60	FUSE	2								
320	1615 8508 00	TERMINAL BOARD	1								
330	1615 8893 00	TERMINAL	5								
340	1626 2302 00	DOOR PLEXIGLASS	1								
350	1089 9412 01	RECEPTACLE	2								



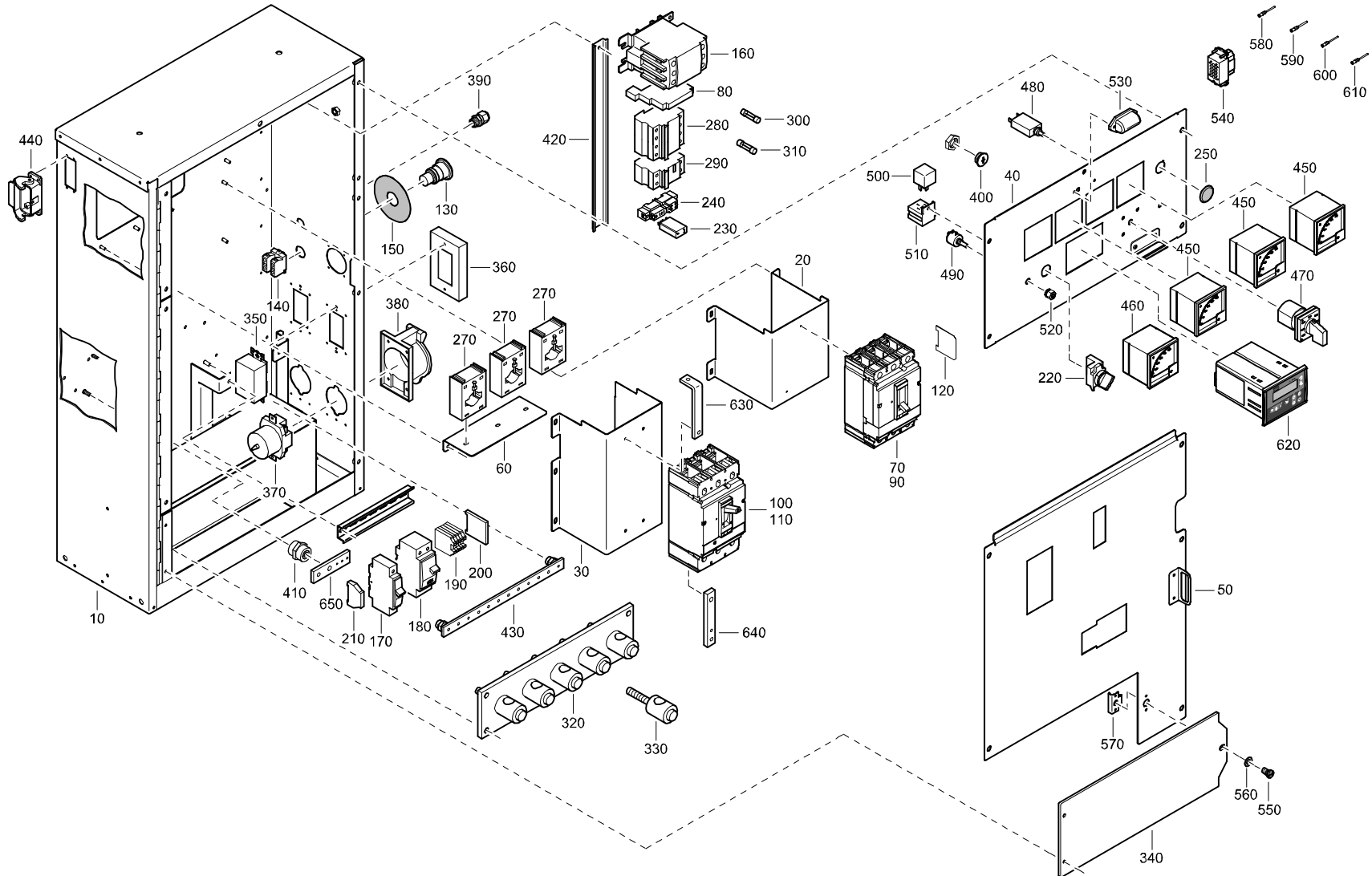
CUBICLE ASSEMBLY - CPG 90 Jd - STANDARD



**CUBICLE ASSEMBLY - CPG 90 Jd - STANDARD**

REF	PART NUMBER	DESIGNATION	QTY	REF	PART NUMBER	DESIGNATION	QTY	REF	PART NUMBER	DESIGNATION	QTY
-	1310 4367 81	CUBICLE ASSY (From page 28)		360	1089 9412 11	PROTECTION	2				
10	1310 4399 01	CUBICLE SHEET METAL	1	370	1089 9412 02	RECEPTACLE	2				
20	1310 4399 44	BRACKET	1	380	1089 9412 12	PROTECTION	2				
30	1310 4399 45	BRACKET	1	390	0698 5140 71	CABLE GLAND	1				
40	1310 4399 50	PANEL	1	400	0697 9810 58	PLUG	1				
50	1310 4399 51	BRACKET	1	410	1089 9385 03	ISOLATOR	1				
20	1310 4402 01	SUPPORT BREAKER	1	420	0993 7106 00	RAIL DIN MOUNTING	AR				
30	1310 4422 01	BRACKET CB SUUPPORT	1	430	1310 0306 61	ISOLATOR	1				
40	1310 4369 01	PANEL CONTROL	1	440	1088 0029 50	HOUSING	1				
50	1310 4423 01	PANEL CUBICLE DOOR	1	450	1089 9381 18	AMMETER	3				
60	1310 4630 01	BRACKET CUBICLE	1	460	1089 9383 01	VOLTMETER	1				
70	1310 0307 24	CIRCUIT BREAKER	1	470	1089 9082 22	SWITCH	1				
80	1310 0306 45	SHUNT TRIP	1	480	1089 9423 01	FUSE	1				
90	1310 0307 14	BARRIER	1	490	1310 0306 62	RELAY	2				
100	1310 0306 64	CIRCUIT BREAKER	1	500	1310 0306 63	RELAY	2				
110	1310 0306 45	SHUNT TRIP	1	510	1089 9371 21	POTMETER	1				
120	1310 0306 44	CONTACT AUXILIARY	1	520	1089 9371 50	LOCK	1				
130	1310 0306 47	EMERGENCY STOP	1	530	1310 0307 18	LIGHT	1				
140	1310 0307 22	BARRIER PHASE	1	540	1088 0029 45	INSERT MALE	1				
150	1310 0306 48	CONTACT BLOCK	1	550	1088 0029 57	CONTACT MALE	2				
160	1310 0306 49	LABEL EMERGENCY STOP	1	560	1088 0029 61	CONTACT MALE	5				
170	1310 0306 50	CONTACTOR	1	570	1088 0029 56	CONTACT MALE	1				
180	1310 0306 51	CIRCUIT BREAKER	2	580	1088 0029 55	CONTACT MALE	3				
190	1310 0306 52	CIRCUIT BREAKER	2	590	1604 9418 00	CONTROLLER	1				
200	1310 0306 53	TERMINAL BLOCK	5	600	1310 0307 23	BUSBAR	3				
210	1310 0306 54	BARRIER TERMINAL BLOCK	1	610	1310 0307 20	BUSBAR	3				
220	1310 0306 55	TERMINAL END STOP	2	620	1310 0307 21	BUSBAR	1				
230	1089 0263 27	SELECTOR SWITCH	1								
240	1310 0306 56	RELAY	2								
250	1310 0306 57	RELAY	2								
260	1310 0307 16	PLUG	1								
270	1089 9484 65	TRANSFORMER	3								
280	1310 0306 58	FUSE HOLDER	1								
290	1310 0306 59	FUSE HOLDER	1								
300	1310 0307 17	FUSE	3								
310	1310 0306 60	FUSE	2								
320	1615 8508 00	TERMINAL BOARD	1								
330	1615 8893 00	TERMINAL	5								
340	1626 2302 00	DOOR PLEXIGLASS	1								
350	1089 9412 01	RECEPTACLE	2								

# CUBICLE ASSEMBLY - CPG 120 Jd - STANDARD

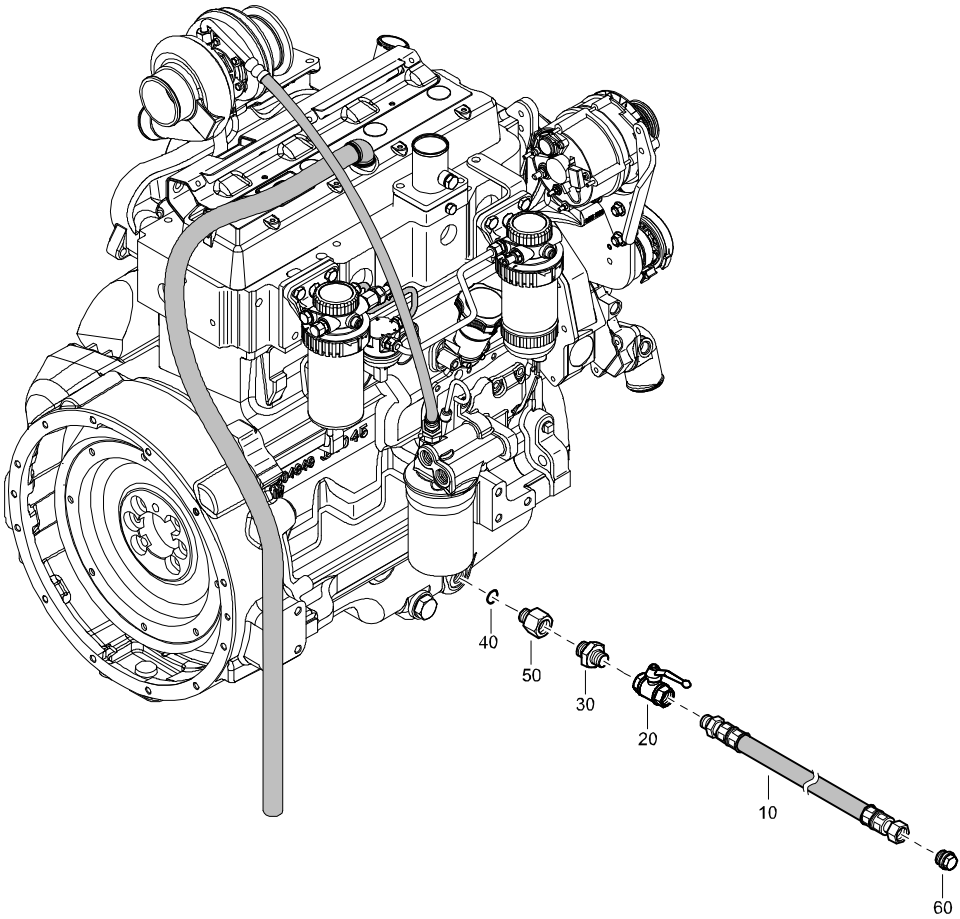


**CUBICLE ASSEMBLY - CPG 120 Jd - STANDARD**

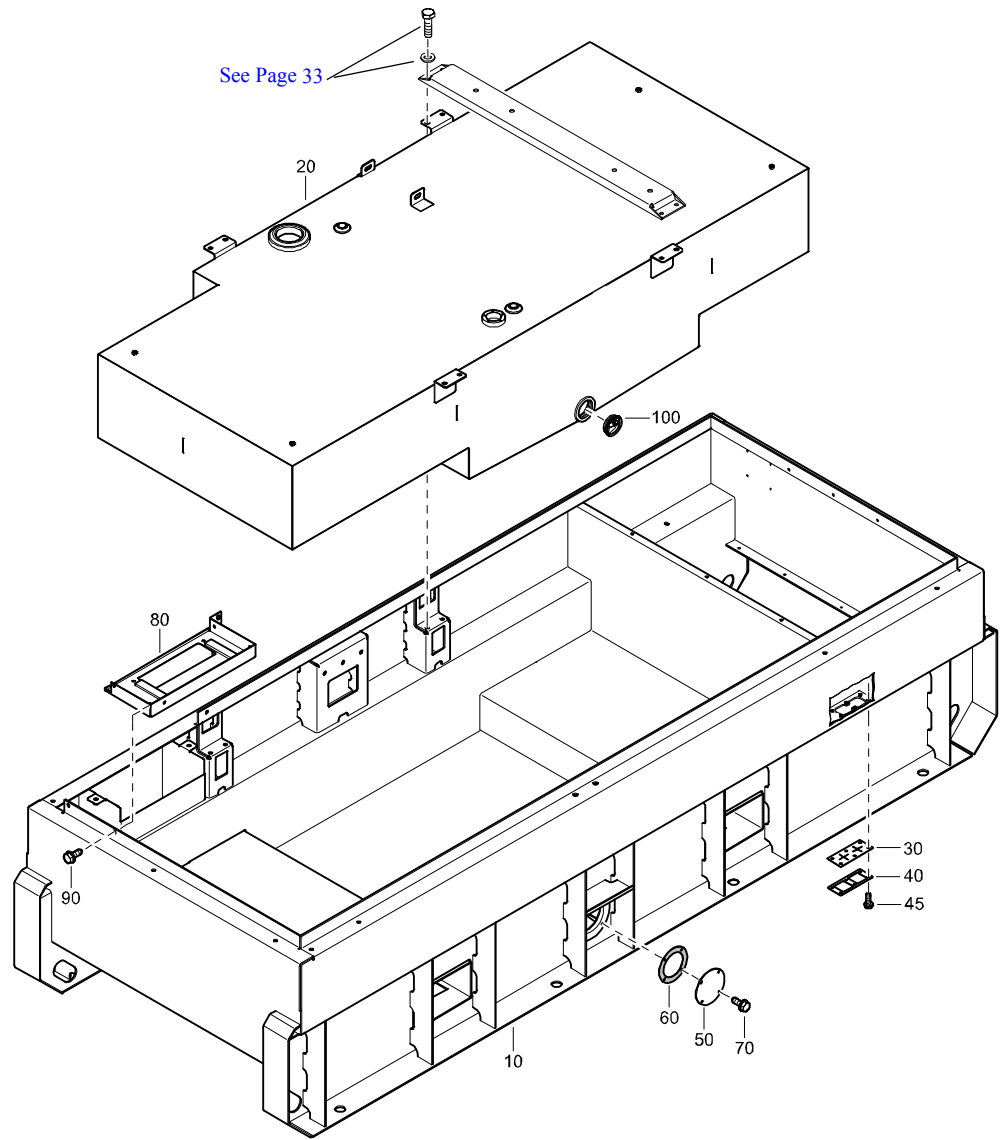
REF	PART NUMBER	DESIGNATION	QTY	REF	PART NUMBER	DESIGNATION	QTY	REF	PART NUMBER	DESIGNATION	QTY
-	1310 4368 81	CUBICLE ASSY	(From page 29)	410	1089 9385 03	ISOLATOR	1				
10	1310 4399 01	CUBICLE	1	420	0993 7106 00	RAIL	AR				
20	1310 4402 01	SUPPORT	1	430	1310 0306 61	ISOLATOR	1				
30	1310 4403 01	SUPPORT	1	440	1088 0029 50	HOUSING	1				
40	1310 4369 01	PANEL	1	450	1089 9381 18	AMMETER	3				
50	1310 4401 01	PANEL	1	460	1089 9383 01	VOLTMETER	1				
60	1310 4630 01	BRACKET	1	470	1089 9082 22	SWITCH	1				
70	1310 0306 43	CIRCUIT BREAKER	1	480	1089 9423 01	FUSE	1				
80	1310 0306 44	CONTACT	1	490	1089 9371 21	POTMETER	1				
90	1310 0306 45	SHUNT TRIP	1	500	1310 0306 62	RELAY	2				
100	1310 0306 46	CIRCUIT BREAKER	1	510	1310 0306 63	RELAY BASE	2				
110	1310 0306 45	SHUNT TRIP	1	520	1089 9371 50	LOCK	1				
120	1310 0307 15	BARRIER	1	530	1310 0307 18	LIGHT	1				
130	1310 0306 47	EMERGENCY STOP	1	540	1088 0029 45	INSERT:MALE	1				
140	1310 0306 48	CONTACT BLOCK	1	550	1615 7166 00	STUD	1				
150	1310 0306 49	LABEL	1	560	1615 6727 00	WASHER	1				
160	1310 0306 50	CONTACTOR	1	570	1615 6728 00	PLATE	1				
170	1310 0306 51	CIRCUIT BREAKER	2	580	1088 0029 57	CONTACT:MALE	2				
180	1310 0306 52	CIRCUIT BREAKER	2	590	1088 0029 61	CONTACT:MALE	5				
190	1310 0306 53	TERMINAL BLOCK	5	600	1088 0029 56	CONTACT:MALE	1				
200	1310 0306 54	BARRIER	1	610	1088 0029 55	CONTACT:MALE	3				
210	1310 0306 55	TERMINAL END STOP	2	620	1604 9418 00	CONTROLLER	1				
220	1089 0263 27	SELECTOR SWITCH	1	630	1310 0307 19	BUSBAR:LINE SIDE	3				
230	1310 0306 56	RELAY	2	640	1310 0307 20	BUSBAR:LOAD SIDE	3				
240	1310 0306 57	RELAY BASE	2	650	1310 0307 21	BUSBAR:NEUTRAL	1				
250	1310 0307 16	PLUG	1								
270	1089 9484 65	TRANSFORMER	3								
280	1310 0306 58	FUSEHOLDER	1								
290	1310 0306 59	FUSEHOLDER	1								
300	1310 0307 17	FUSE	3								
310	1310 0306 60	FUSE	2								
320	1615 8508 00	TERMINAL BOARD	1								
330	1615 8893 00	TERMINAL	5								
340	1626 2302 00	DOOR	1								
350	1089 9412 01	RECEPTACLE	2								
360	1089 9412 11	PROTECTION	2								
370	1089 9412 02	RECEPTACLE	2								
380	1089 9412 12	PROTECTION	2								
390	0698 5140 71	CABLE GLAND	1								
400	0697 9810 58	PLUG	1								

**OIL SYSTEM - STANDARD**

REF	PART NUMBER	DESIGNATION	QTY
10	1310 0353 82	HOSE ASY ENGINE OIL DRAIN	1
20	VAL02131	BALL VALVE	1
30	0603 0118 14	NIPPLE	1
40	0663 3122 00	O-RING	1
50	1310 0354 87	ADAPTER	1
60	1310 0355 25	PLUG	1

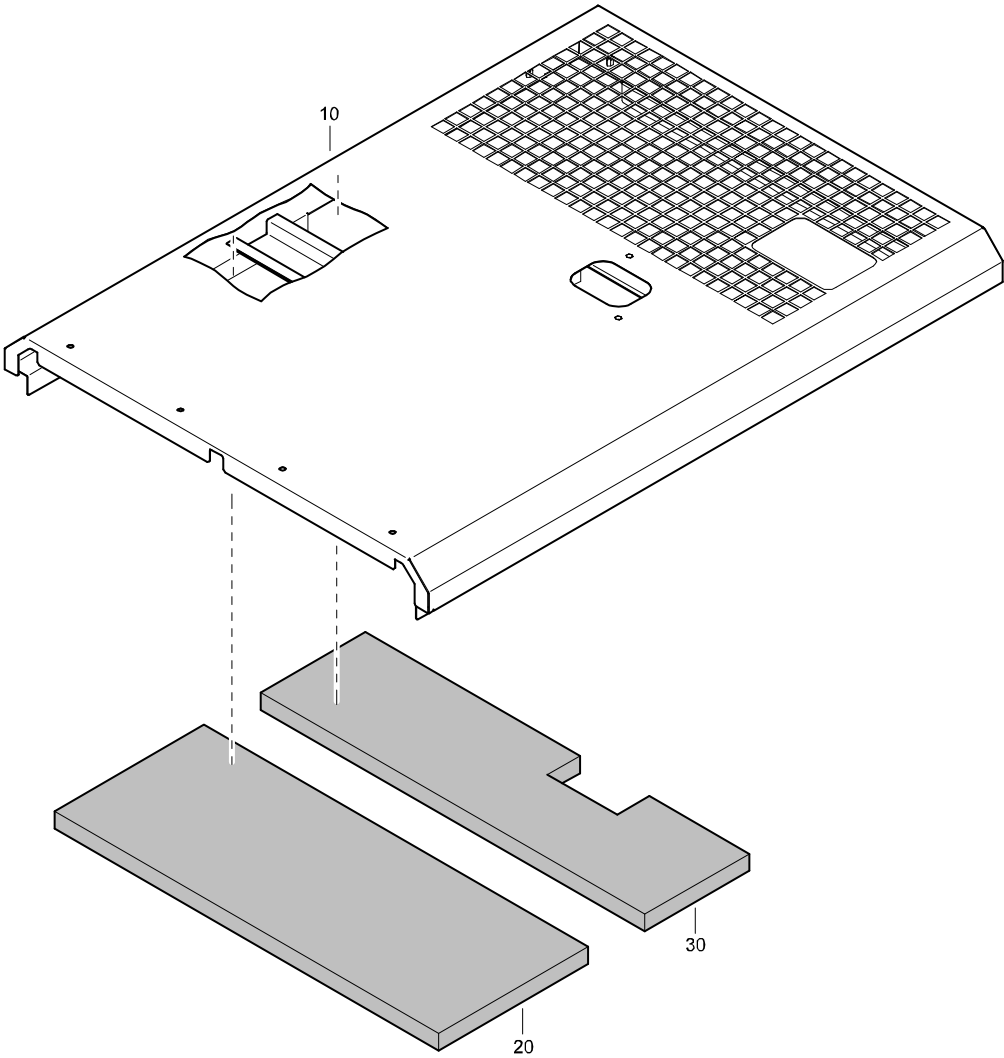


# FRAME TANK ASSEMBLY - STANDARD



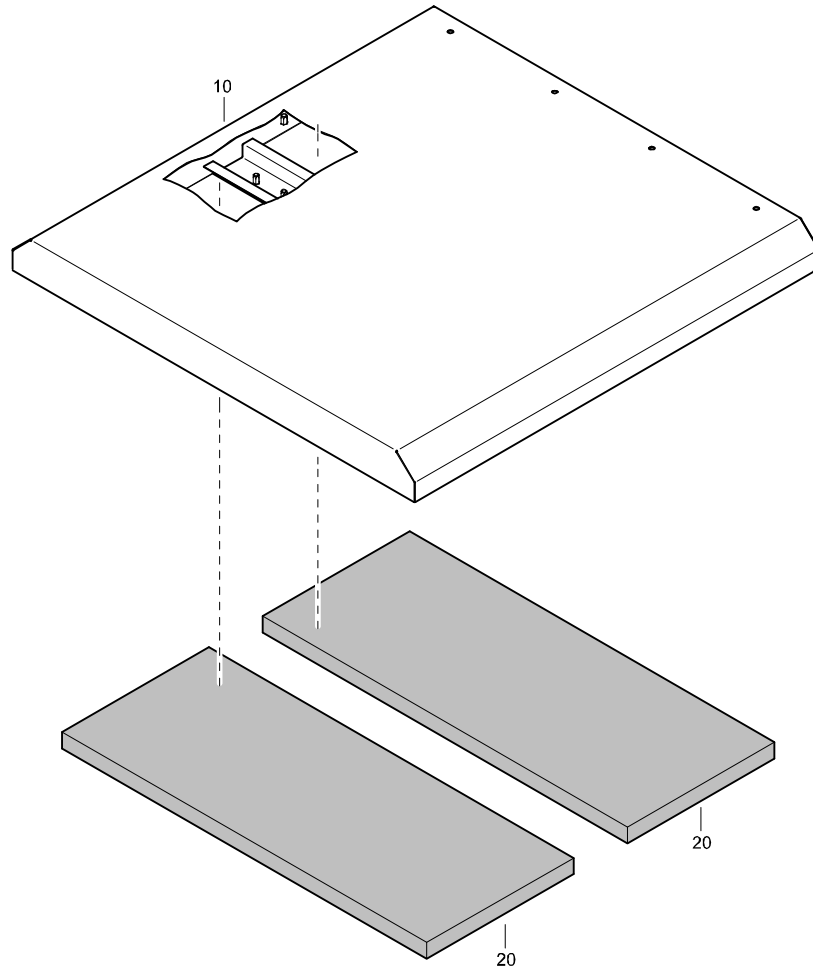
REF	PART NUMBER	DESIGNATION	QTY
-	1310 3124 86	FRAME TANK ASSEMBLY	
		(From page 34)	
10	1310 4420 00	FRAME	1
20	1310 4396 00	FUEL TANK	1
30	1310 4368 00	GASKET	1
40	1310 4367 00	PLATE	1
45	1619 5898 01	HEX HEAD SCREW	6
50	1310 4479 00	COVER-DRAIN	1
60	1310 4637 00	GASKET	1
70	1619 2766 00	HEX HEAD SCREW	4
80	1310 4541 00	MOUNT CUBICLE	1
90	1619 2766 00	HEX HEAD SCREW	3
100	1310 0306 26	PLUG	3

**FRONT ROOF ASSEMBLY - STANDARD**



REF	PART NUMBER	DESIGNATION	QTY
-	1310 4370 80	PANEL-ROOF ASSY FRONT (From page 34)	
10	1310 4370 00	ROOF PANEL	1
20	1310 0370 08	INSULATION ROOF	1
30	1310 0370 09	INSULATION ROOF	1

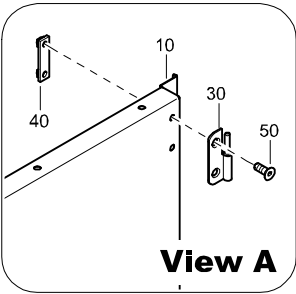
# REAR ROOF ASSEMBLY - STANDARD



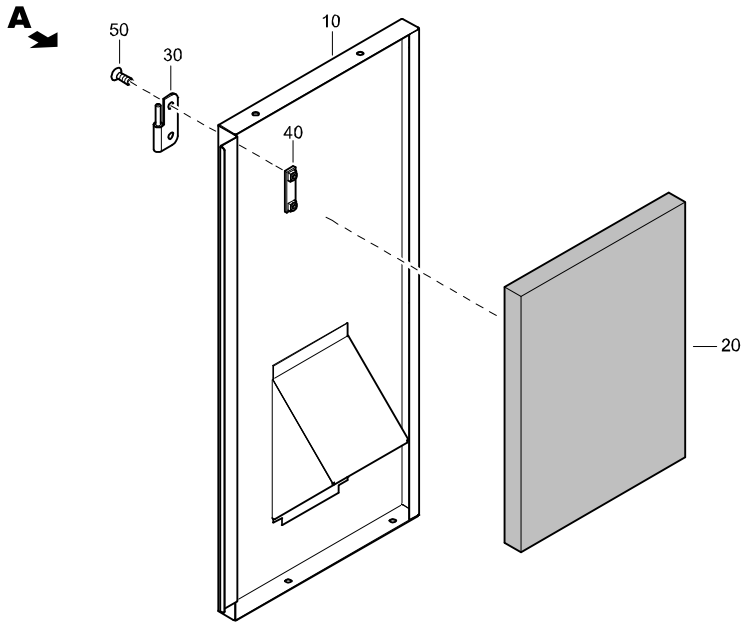
REF	PART NUMBER	DESIGNATION	QTY
-	1310 4371 80	PANEL-ROOF ASSY FRONT (From page 34)	
10	1310 4371 00	PANEL ROOF REAR	1
20	1310 0370 10	INSULATION ROOF	2



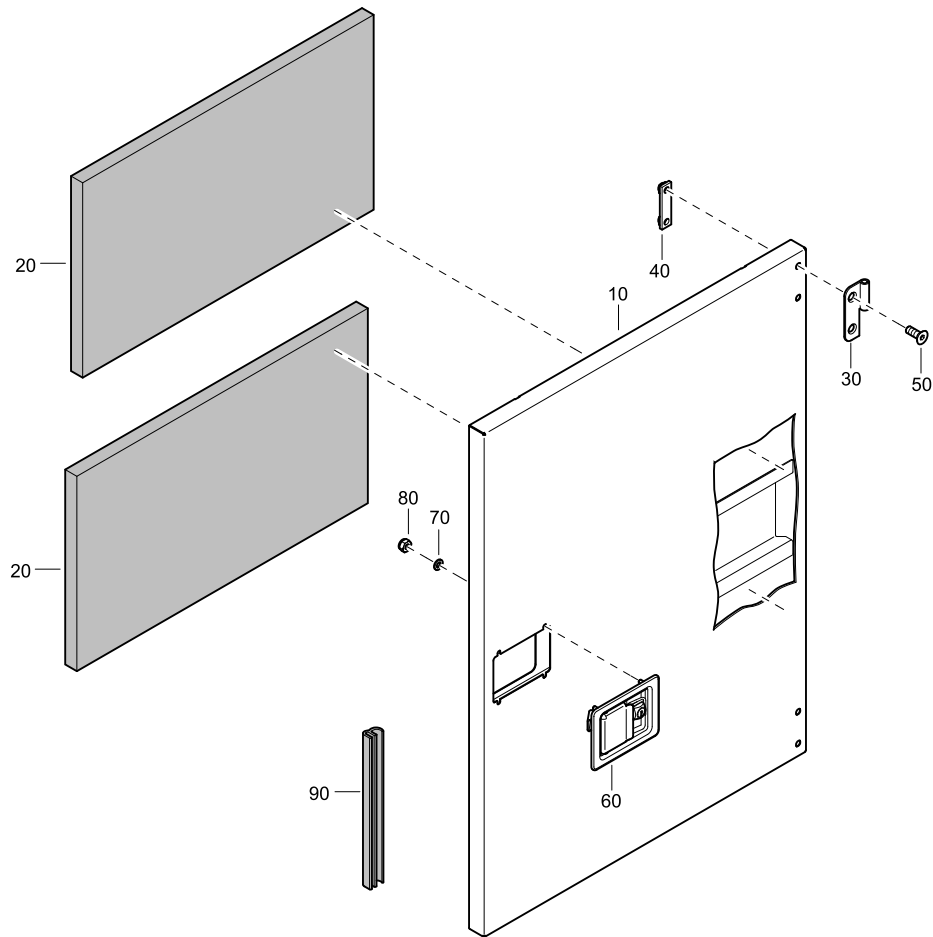
**SIDE PANEL ASSEMBLY - STANDARD**



REF	PART NUMBER	DESIGNATION	QTY
-	1310 4374 80	PANEL-SIDE ASSY <a href="#">(From page 34)</a>	
10	1310 4374 00	SIDE PANEL	1
20	1310 0370 15	INSULATION	1
30	1615 5686 01	HINGE	2
40	1615 5684 00	BRACKET	2
50	0216 1324 03	SOC HD CAP SCREW	4



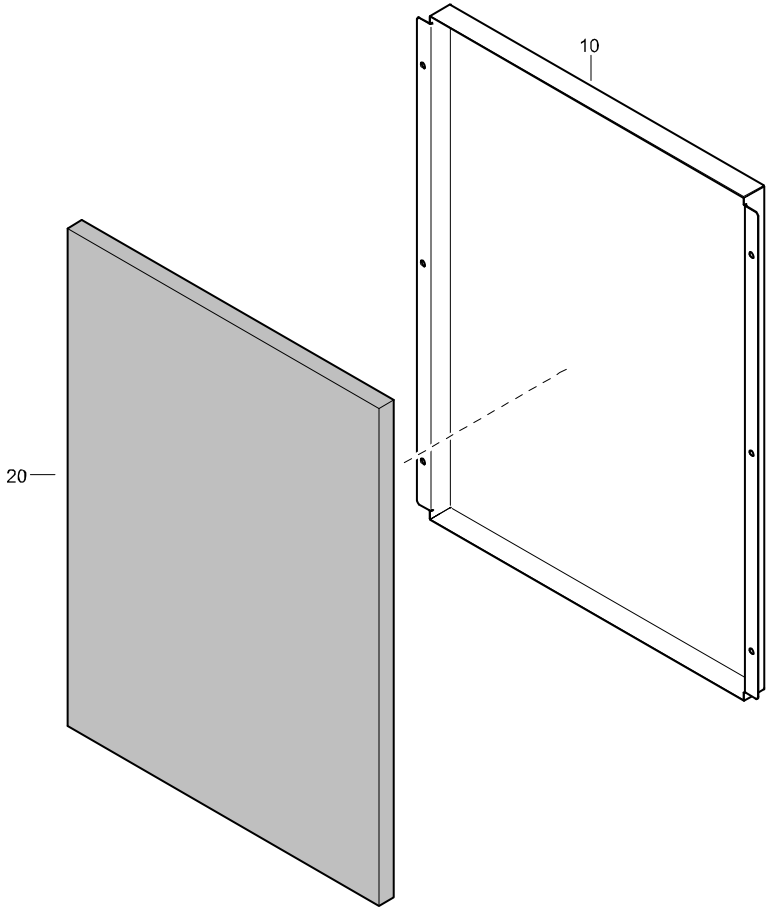
# DOOR-LARGE ASSEMBLY - STANDARD



REF	PART NUMBER	DESIGNATION	QTY
-	1310 4375 80	DOOR-LARGE ASSY (From page 34)	
10	1310 4375 00	DOOR-LARGE L&R	1
20	1310 0370 16	INSULATION	2
30	1615 5685 01	HINGE	2
40	1615 5684 00	BRACKET	2
50	0216 1324 03	SOC HD CAP SCREW	4
60	1615 6967 03	HANDLE	1
70	0301 2321 00	FLAT WASHER	4
80	0291 1108 00	LOCKNUT	4
90	1619 2665 00	SEAL	AR

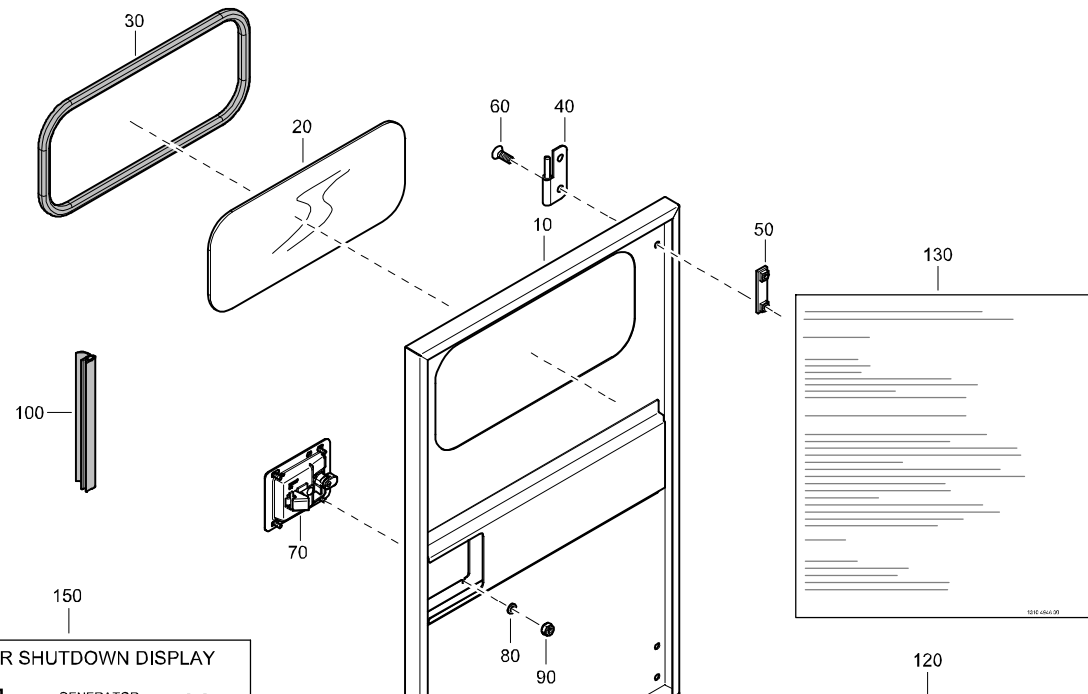
**FRONT PANEL ASSEMBLY - STANDARD**

REF	PART NUMBER	DESIGNATION	QTY
-	1310 4378 80	PANEL-FRONT ASSY (From page 34)	
10	1310 4378 00	FRONT PANEL	1
20	1310 0370 18	INSULATION	1



# CUBICLE DOOR ASSEMBLY - STANDARD

REF	PART NUMBER	DESIGNATION	QTY
-	1310 4377 80	DOOR-CUBICLE ASSY (From page 34)	
10	1310 4377 00	DOOR-CUBICLE	1
20	1310 4048 00	WINDOW	1
30	1310 4049 00	SEAL	AR
40	1615 5685 01	HINGE	2
50	1615 5684 00	BRACKET	2
60	0216 1324 03	SOC HD CAP SCREW	4
70	1615 6967 03	HANDLE	1
80	0301 2321 00	FLAT WASHER	4
90	0291 1108 00	LOCKNUT	4
100	1619 2665 00	SEAL	AR
120	1310 4558 00	LABEL OPERATING INSTRUCTION	1
130	1310 4946 00	LABEL OPERATING INSTRUCTION	1
150	1310 4100 00	LABEL OPERATING	1



**WARNING OR SHUTDOWN DISPLAY**

LOW OIL PRESSURE		GENERATOR OVERVOLTAGE	Hz>
HIGH COOLENT TEMPERATURE		GENERATOR UNDERVOLTAGE	Hz<
CHARGING ALTERNATOR		SERVICE TIMER 1	Y1
LOW FUEL LEVEL		SERVICE TIMER 2	Y2
LOW COOLENT LEVEL		EMERGENCY STOP	
GENERATOR OVERVOLTAGE	V>	ALARM	
GENERATOR UNDERVOLTAGE	V<	START FAILURE	
		STOP FAILURE	

1310 4100 00 rev.1

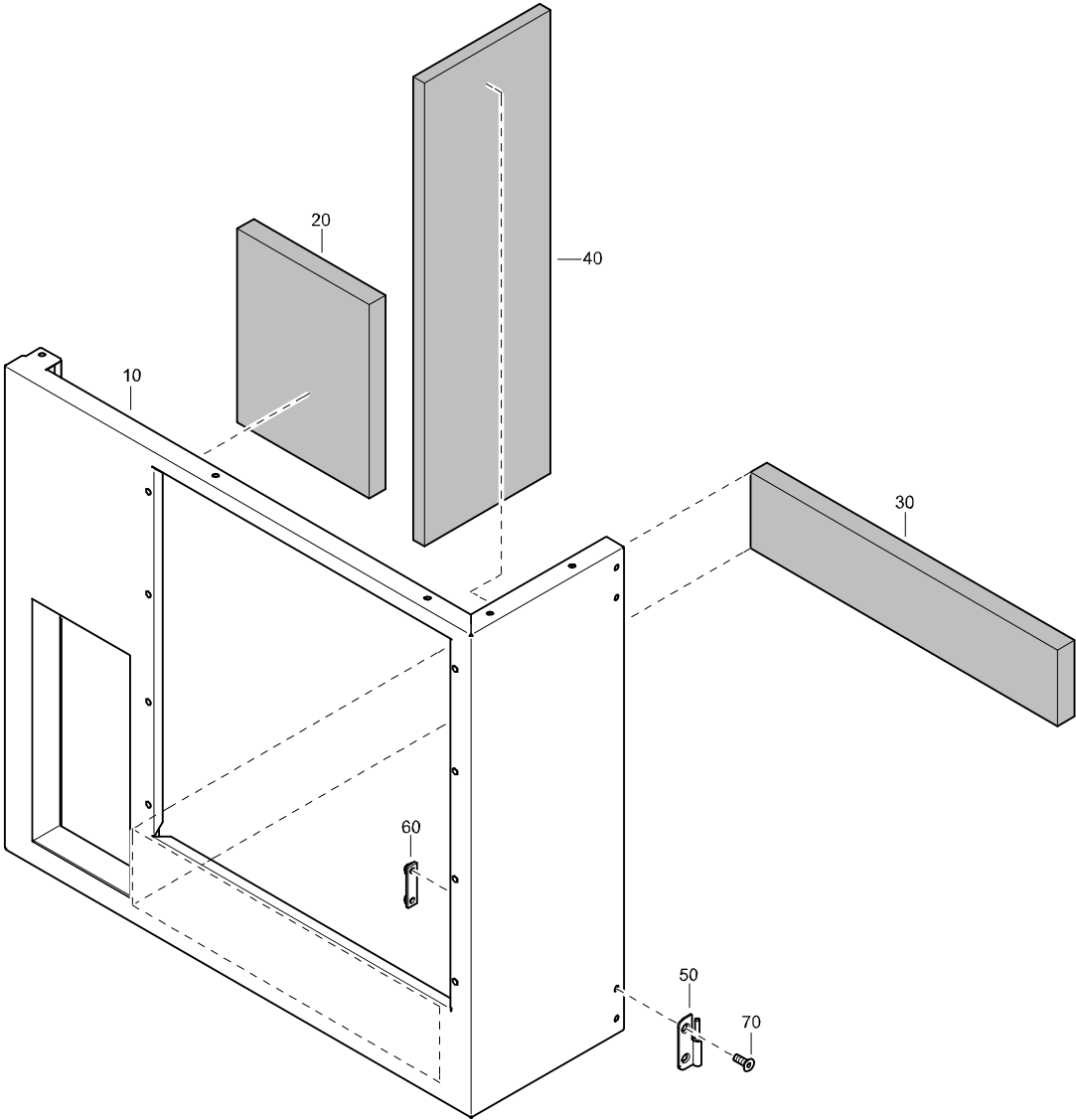
**120**

Identification of symbols

1. Stop Generator
2. Start Generator
3. Remote start
4. To scroll up through menu
5. To scroll down through menu
6. To enter selection
7. To go back to main menu
8. Warning Indication
9. Power ON

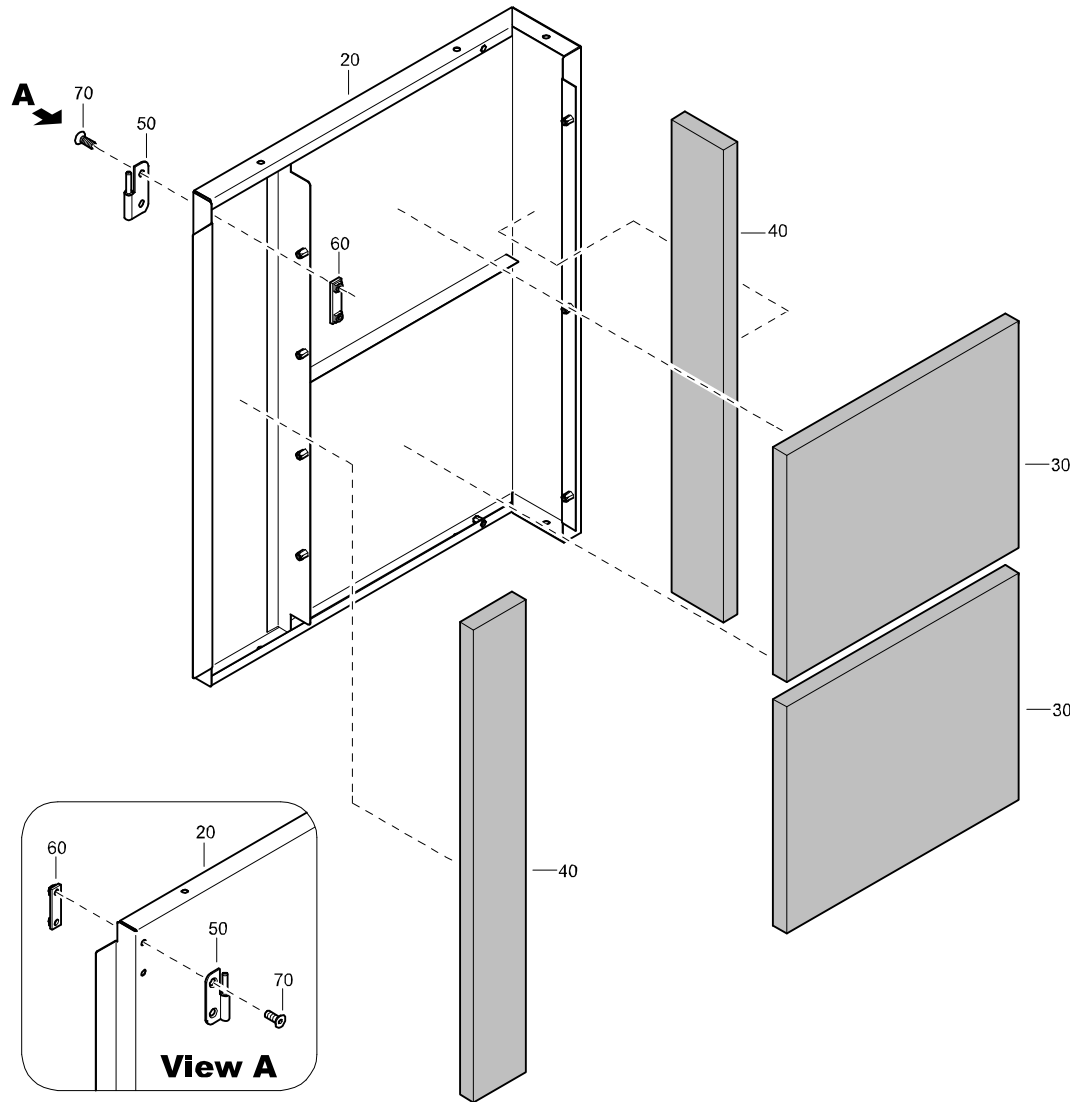
1310 4558 00

**REAR PANEL ASSEMBLY - STANDARD**



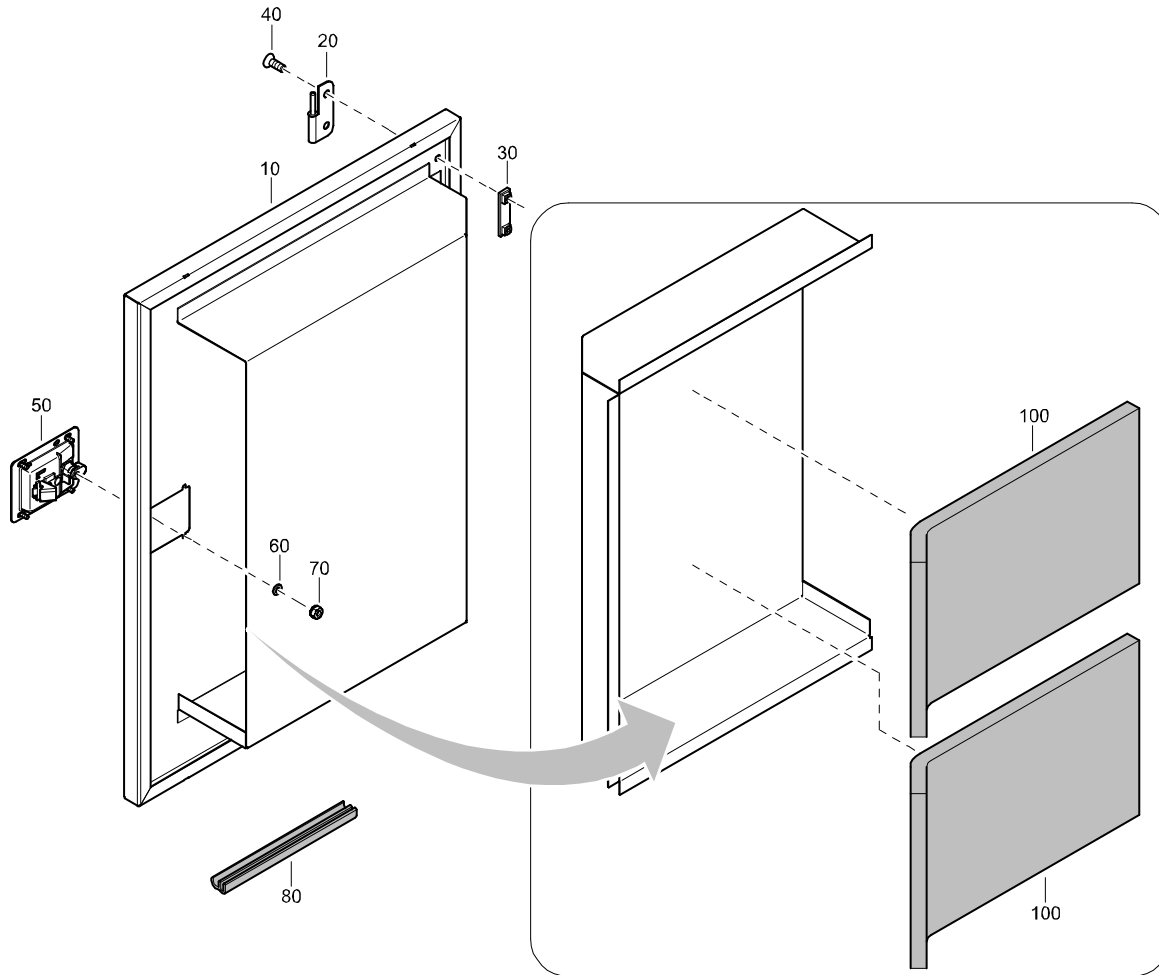
REF	PART NUMBER	DESIGNATION	QTY
-	1310 4379 80	PANEL-REAR ASSY (From page 34)	
10	1310 4379 00	PANEL-REAR	1
20	1310 0370 19	INSULATION	2
30	1310 0370 20	INSULATION	1
40	1310 0370 21	INSULATION	1
50	1615 5686 01	HINGE	2
60	1615 5684 00	BRACKET	2
70	0216 1324 03	SOC HD CAP SCREW	4

# FRONT CORNER ASSEMBLY - STANDARD



REF	PART NUMBER	DESIGNATION	QTY
-	1310 4380 80	CORNER FRONT R (From page 34)	
20	1310 4380 00	PANEL CORNER	1
30	1310 0370 13	INSULATION CORNER PANEL	2
40	1310 0370 14	INSULATION CORNER PANEL	2
50	1615 5686 01	HINGE	2
60	1615 5684 00	BRACKET	2
70	0216 1324 03	SOC HD CAP SCREW	4

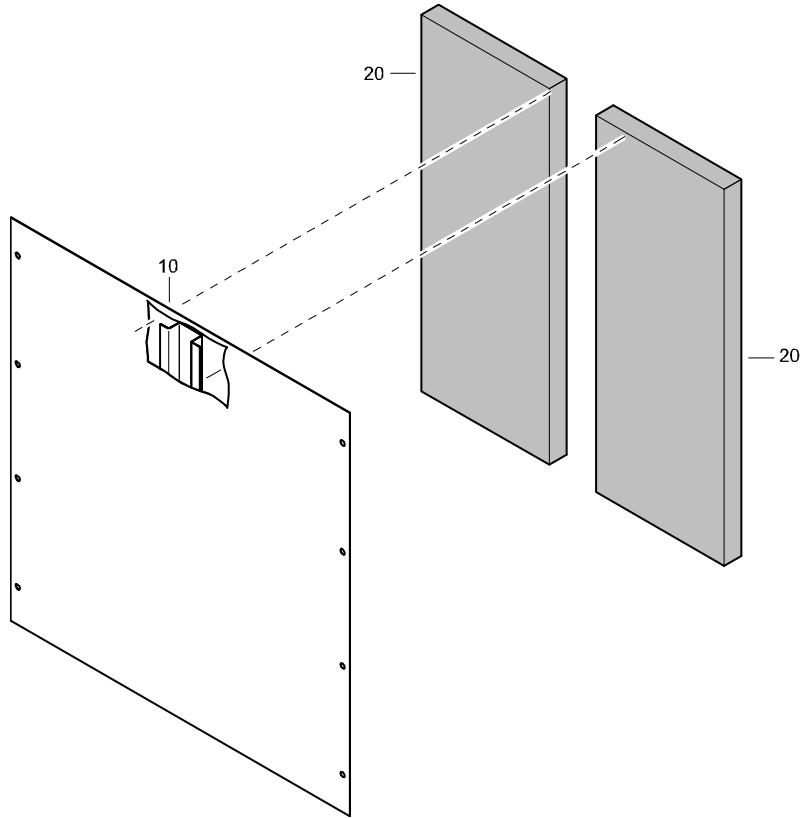
# VENT FRONT DOOR - STANDARD



REF	PART NUMBER	DESIGNATION	QTY
-	1310 4412 80	DOOR VENT FRONT (From page 34)	
10	1310 4412 00	DOOR VENTS	1
20	1615 5685 01	HINGE	2
30	1615 5684 00	BRACKET	2
40	0216 1324 03	SOC HD CAP SCREW	4
50	1615 6967 03	HANDLE	1
60	0301 2321 00	FLAT WASHER	4
70	0291 1108 00	LOCKNUT	4
80	1619 2665 00	SEAL	AR
100	1310 4412 61	INSULATION DOOR	1

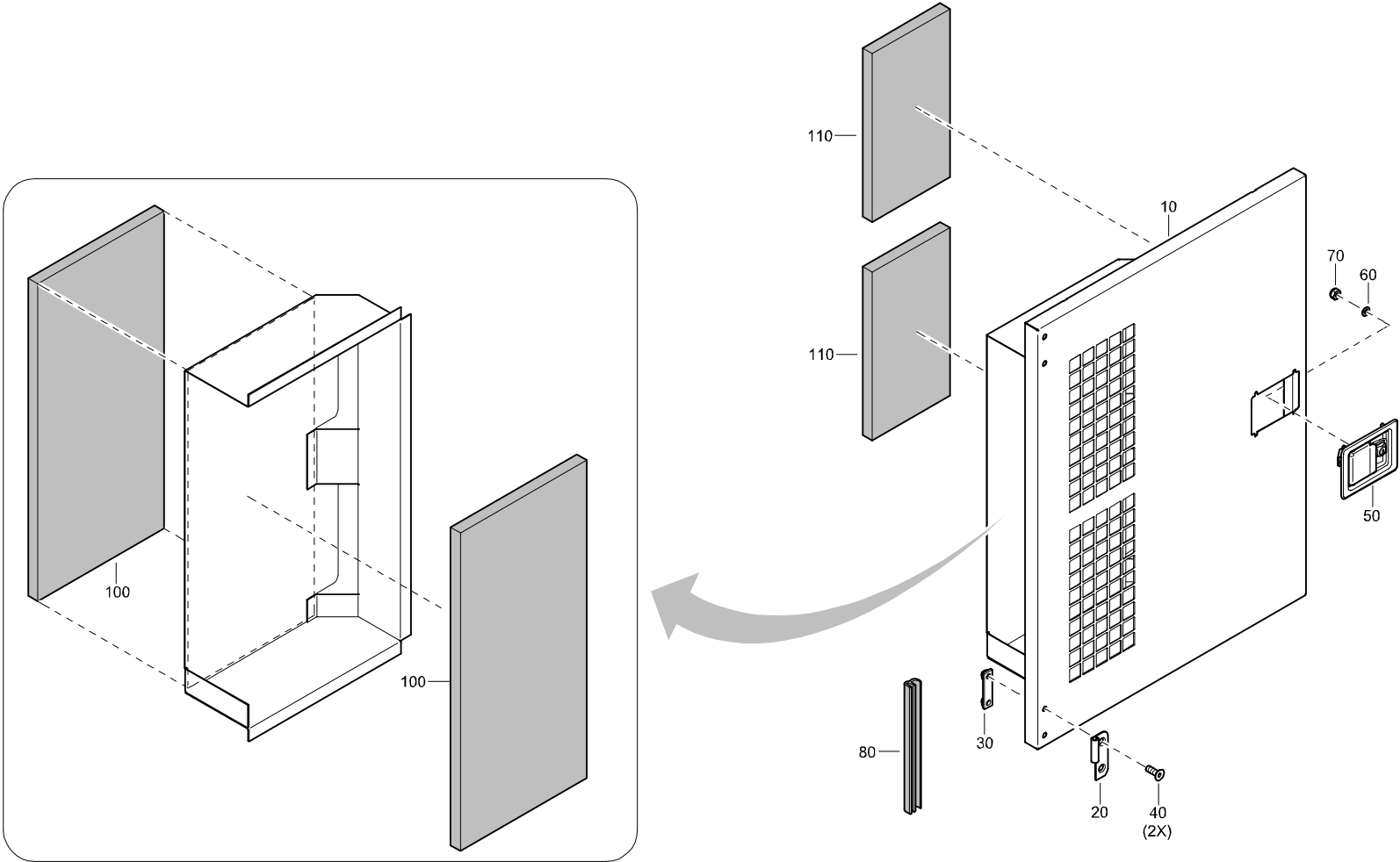
# REAR PANEL ASSEMBLY - STANDARD

REF	PART NUMBER	DESIGNATION	QTY
-	1310 4528 80	PANEL ASSY REAR (From page 34)	
10	1310 4528 01	PANEL REAR	1
20	1310 4528 15	FOAM REAR PANEL	2





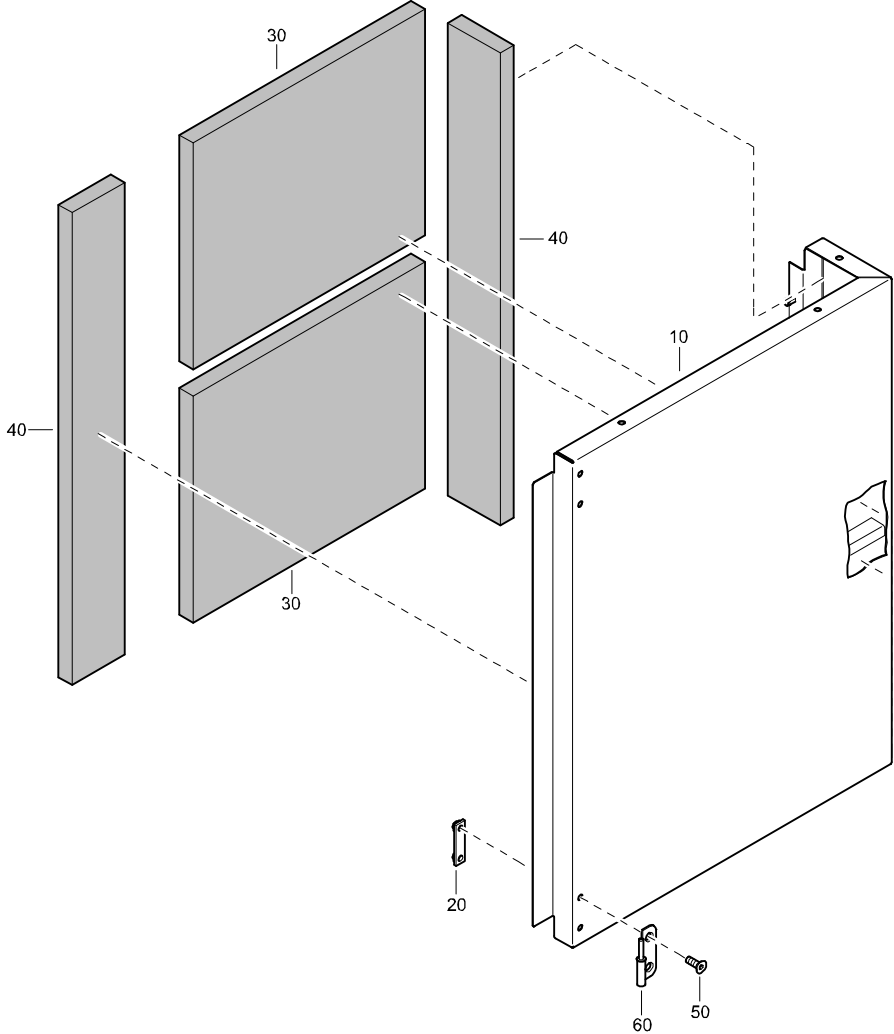
**VENT REAR DOOR - STANDARD**



## VENT REAR DOOR - STANDARD

REF	PART NUMBER	DESIGNATION	QTY	REF	PART NUMBER	DESIGNATION	QTY	REF	PART NUMBER	DESIGNATION	QTY
-	1310 4506 80	DOOR VENT REAR	(From page 34)								
10	1310 4506 00	DOOR	1								
20	1615 5685 01	HINGE	2								
30	1615 5684 00	BRACKET	2								
40	0216 1324 03	SOC HD CAP SCREW	4								
50	1615 6967 03	HANDLE	1								
60	0301 2321 00	FLAT WASHER	4								
70	0291 1108 00	LOCKNUT	4								
80	1619 2665 00	SEAL	AR								
100	1310 4506 61	INSULATION	2								
110	1310 4506 62	INSULATION	2								

**FRONT CORNER ASSEMBLY - STANDARD**



REF	PART NUMBER	DESIGNATION	QTY
-	1310 4542 80	CORNER FRONT L <a href="#">(From page 34)</a>	
10	1310 4380 00	CORNER PANEL	1
20	1615 5684 00	BRACKET	2
30	1310 0370 13	INSULATION	2
40	1310 0370 14	INSULATION	2
50	0216 1324 03	SOC HD CAP SCREW	4
60	1604 3430 00	HINGE	2