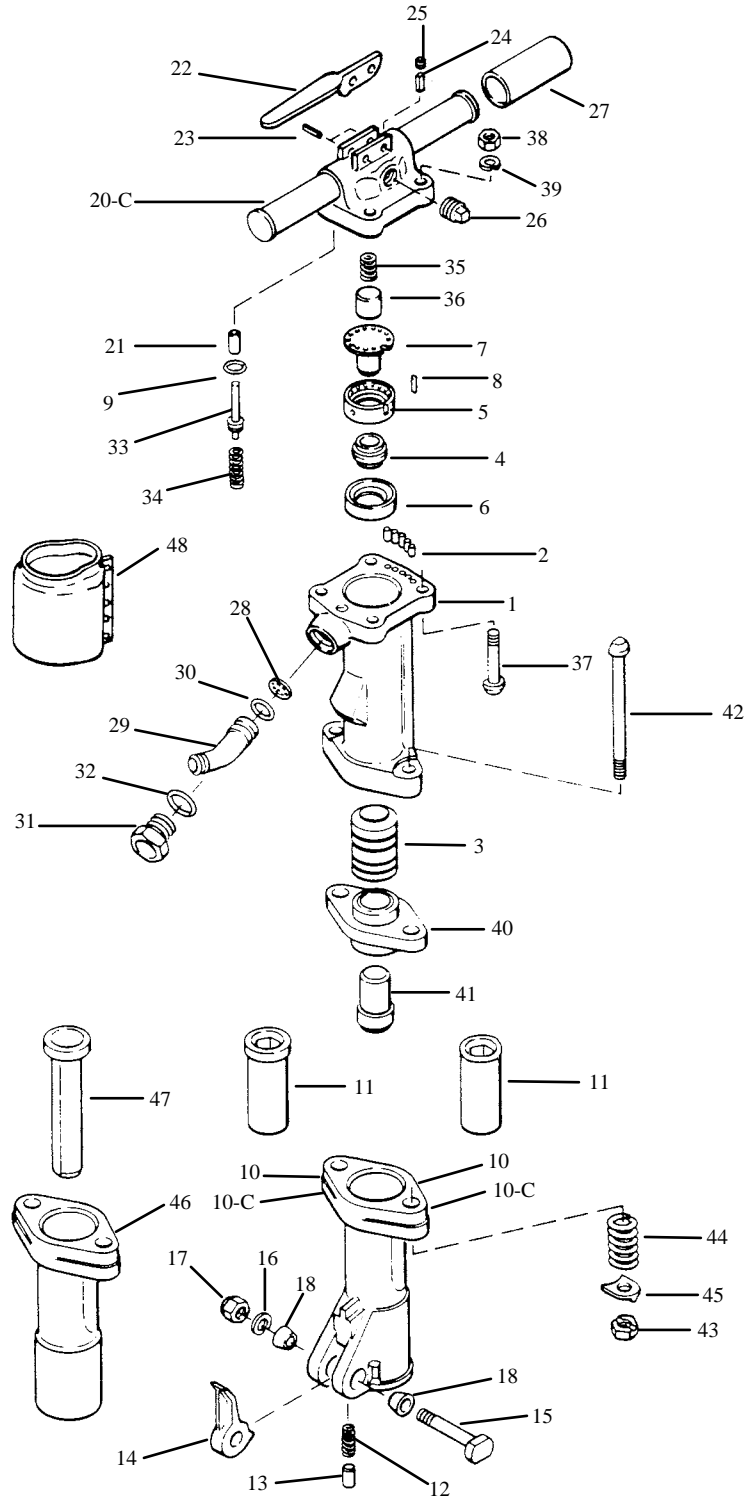


K125R Redline Paving Breaker





711 Lake Street Phone (800) 527-2282
 Kent, Ohio 44240 Fax (330) 677-1616
 www.kentdemolition.com

K125R Redline Paving Breaker

Parts List

Item	Furukawa P/N	Qty	Description	Item	Furukawa P/N	Qty	Description
<u>Cylinder</u>							
1	K05728	1	Cylinder				
2	K04039	5*	Cylinder Nylon Plug	20-C	K05722	1	<u>Handle</u> Backhead Complete (Before S/N 62000)
3	K00042	1	Piston	K18951	1	Backhead, Bare (After S/N 62000)	
4	K05700	1*	Automatic Valve	21	K01294	1*	Throttle Lever Bushing (Item 21 eliminated after S/N 62000)
5	K05704	1	Valve Chest	22	K01296	1*	Throttle Lever
6	K05705	1	Valve Chest Seat	23	K01292	1*	Throttle Lever Pin (Before S/N 62000)
7	K05702	1	Valve Guide Stem	K18952	1	Throttle Lever Pin (After S/N 62000)	
8	K05701	1*	Valve Chest Dowel	24	K00591	1*	Oil Control Filter
9	K05706	1*	Valve Port "O"-Ring	25	K00731	1*	Oil Control Plug
<u>Front Head</u>				26	K01143	1*	Oil Plug
<u>(Items 10-C thru 11 before S/N 58000)</u>				27	K03019	1*	Grip
10-C	KBM05671	1	Front Head Complete 1-1/8 Hex	NS	K04157	2	Allen Head Plugs
10	KBM05715	1	Front Head w/K01400 Bushing	<u>Assembly Parts</u>			
11	K01400	1*	Front Head Bushing 1-1/8 Hex	28	K00508	1*	Air Inlet Screen
10-C	KBM05672	1	Front Head Complete 1-1/4 Hex	29	KBM01300	1*	Air Inlet Swivel(Inc.5713)
10	KBM05716	1	Front Head w/K01401 Bushing	30	K05713	1	"O"-Ring Inlet Swivel
11	K01401	1*	Front Head Bushing 1-1/4 Hex	31	KBM01295	1*	Air Inlet Swivel Nut (Inc.1937)
10	K01399	1	Front Head Bare	32	K01937	1*	Air Inlet Nut "O"-Ring
<u>Front Head</u>				33	K01285A	1*	Throttle Valve (No "O"-Rings) (New style throttle valve, machined seat)
<u>(Items 10-C thru 11 after S/N 58000)</u>				33	KBM01285	1*	Throttle Valve w/"O"-Ring (Old style includes "O"-Rings 1613 and 1546)
10-C	KBM18782	1	Front Head Complete 1-1/8 Hex	34	K01291	1*	Throttle Valve Spring
10	KBM18783	1	Front Head w/K18778 Bushing	35	K01298	1*	Plunger Spring(Backhead)
11	K18778	1*	Front Head Bushing 1-1/8 Hex	36	K01297	1*	Plunger (Backhead) (Item 36 eliminated after S/N 62000)
10-C	KBM18784	1	Front Head Complete 1-1/4 Hex	37	KBM01126	1	Backhead Bolt Assembly (Inc.1274 & 9847)
10	KBM18785	1	Front Head w/K18781 Bushing	38	K01125	1	Backhead Bolt Nut
11	K18781	1*	Front Head Bushing 1-1/4 Hex	39	K09847	1*	Backhead Bolt Lockwasher
10	K18787	1	Front Head Bare	40	K05709	1	Tappet Seat
12	K01288	1*	Retainer Spring	41	K00068	1	Tappet
13	K01287	1*	Retainer Plunger	42	KBM05708	1	Front Head Bolt (Inc.1129)
14	K01136	1*	Retainer	43	K01129	1*	Front Head Bolt Nut
15	K01132	1*	Retainer Bolt	44	K01290	1*	Front Head Bolt Spring
16	K03997	1*	Retainer Bolt Lockwasher	45	K01289	1	Front Head Bolt Lockwasher
17	K00954	1*	Retainer Bolt Nut	<u>Accessory</u>			
18	K05719	2*	Retainer Bolt Bushing (Rubber) Standard	46	K05646	1	Spike Driver Head
NS	K01131	2	Retainer Bolt Bushing (Steel) Optional	47	K05647	1	Spike Driver Dolly
				48	K05769	1	Muffler (125R)

*Depicts Interchangeable Parts of 123R and 125R Redline Tools