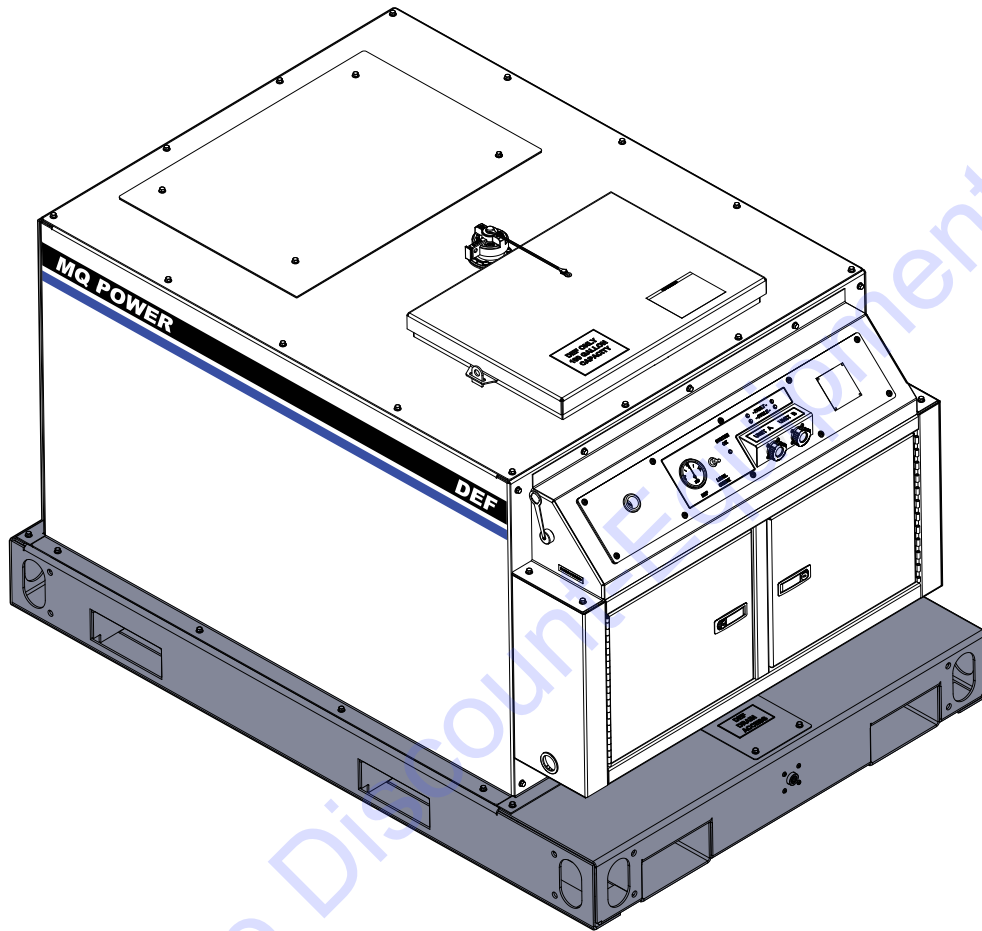




## DEFTANK

### 100-Gallon Replenishment System



#### STANDARD FEATURES

- CANBUS DEF level monitoring – for approved Tier 4 Final engines.
- Designed to automatically maintain DEF fluid level for up to two engine (using the DEFTANK2 model) assemblies simultaneously with no operator involvement.
- Digital controller provides automated sensing, pumping, purging and shutdown to maintain DEF tank levels.
- Heavy duty, hot dipped galvanized, skid base.
- Easy access drain port for serviceability.
- Internal 100 Gallons (379 liters) DEF Tank, Poly.
- Lockable Storage Compartments on top and front panels secure accessories.
- Intuitive control panel that provides fluid level and critical operating information.
- Fault code indicators for ease of troubleshooting and maintenance.
- Four corner tie downs are provided for ease of transport.
- Fork Pockets integrated on all sides of the skid base.
- Easy to fill, top mounted tank port, for quick access.
- Rugged, textured powder coated, housing for longevity in extreme environments.
- 20-Foot DEF Fill Hose(s).
- Easy access drain port for serviceability.

**TO PURCHASE THIS PRODUCT PLEASE CONTACT US**



**Equipment Financing and  
Extended Warranties Available**



**Discount-Equipment.com is your online resource for  
commercial and industrial quality parts and equipment sales.**

**561-964-4949**

**visit us on line @ [www.discount-equipment.com](http://www.discount-equipment.com)**

Select an option below to find your Equipment

**Search by Manufacturer**

**Search by Product Type**

**Request a Quote**

We sell worldwide for the brands: Genie, Terex, JLG, MultiQuip, Mikasa, Essick, Whiteman, Mayco, Toro Stone, Diamond Products, Generac Magnum, Airman, Haulotte, Barreto, Power Blanket, Nifty Lift, Atlas Copco, Chicago Pneumatic, Allmand, Miller Curber, Skyjack, Lull, Skytrak, Tsurumi, Husquvarna Target, Stow, Wacker, Sakai, Mi-T-M, Sullair, Basic, Dynapac, MBW, Weber, Bartell, Bennar Newman, Haulotte, Ditch Runner, Menegotti, Morrison, Contec, Buddy, Crown, Edco, Wyco, Bomag, Laymor, EZ Trench, Bil-Jax, F.S. Curtis, Gehl Pavers, Heli, Honda, ICS/PowerGrit, IHI, Partner, Imer, Clipper, MMD, Koshin, Rice, CH&E, General Equipment, Amida, Coleman, NAC, Gradall, Square Shooter, Kent, Stanley, Tamco, Toku, Hatz, Kohler, Robin, Wisconsin, Northrock, Oztec, Toker TK, Rol-Air, APT, Wylie, Ingersoll Rand / Doosan, Innovatech, Con X, Ammann, Mecalac, Makinex, Smith Surface Prep, Small Line, Wanco, Yanmar



# DEFTANK

## 100-Gallon Replenishment System

### SPECIFICATIONS

Unit Specifications		
	DEFTANK1	DEFTANK2
System Voltage Requirements	12 VDC MAX	
Amperage Requirements	5.0 Amps	5.0 Amps x 2
Flow Rate	.75 GPM	.75 GPM x 2
Fluid Pressure	5 PSI MAX	
External Hose Length	25 FT	25 FT x 2
Communication Cable	25 FT	25 FT x 2

DEF Capacity	
Tank Capacity	100 gallons (379 liters)
Fluid Type	Diesel Exhaust Fluid /Complies with ISO-2224

DEF Dispenser Kit	
Model	DEFDISPENSERKIT
DEF Flow	8 gpm (30.28 lpm)
Nozzle Size	3/4 in. (19 mm)
Maximum Pressure	38 psi (262 kPa)
Motor Amperage	22 amps
Motor Voltage	12 VDC
Pump Motor	1/4 hp
Duty Cycle	30 minutes
Hose Length	20 ft. (6.09 m)
Material	Poly laminated stainless steel
Weight	17 lb. (7.71 kg)

DEF Tank Lift and Stack Assemblies		
Model	DEFTANKSTACKKITP	DEFTANKSTACKKITG
Material	Mild steel	
Stacking Capacity	1 unit max.	
Finish	Powder coated	Galvanized
Approx. Weight	250 lb. (113 kg)	

DEF Tank Heating Pad	
Model	DEFHEATPAD
Material	Fiberglass-reinforced silicone rubber
Wattage	1,200 watts
Thermostat Operation Range	34°F to 45°F
Inlet Receptacle	120 VAC / 15 amps
Rated Amperage	12.5 amps
Rated Voltage	120 VAC
Switchable Input	On/Off
Dimensions	25 x 36 in. (635 x 914 mm)

DEF Heated Hose	
Model	DEFHOSEHEAT
Material	Compatible with ISO 22241
Material Temp. Range	-40°F to 248°F
Wattage	132 watts
Thermostat Operation Range	34°F to 45°F
Inlet Receptacle	Deutsch connector DT04-2P with W2P
Rated Amperage	11.0 amps
Rated Voltage	12 VDC
Hose Length	19.7 ft. (6.00 m)
OD	0.57 in. (14.5 mm)
ID	0.21 in. (5.33 mm)
Above specifications are for each DEF heated hose.	

### WARRANTY

24 months from date of purchase.

### NOTICE

Specifications sheet is subject to change and is not intended for use in installation design.



# DEFTANK

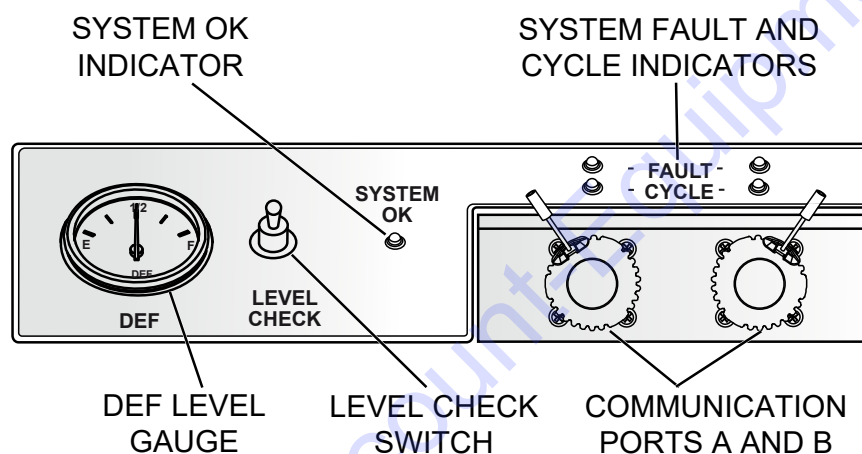
## 100-Gallon Replenishment System

### OPTIONAL EQUIPMENT

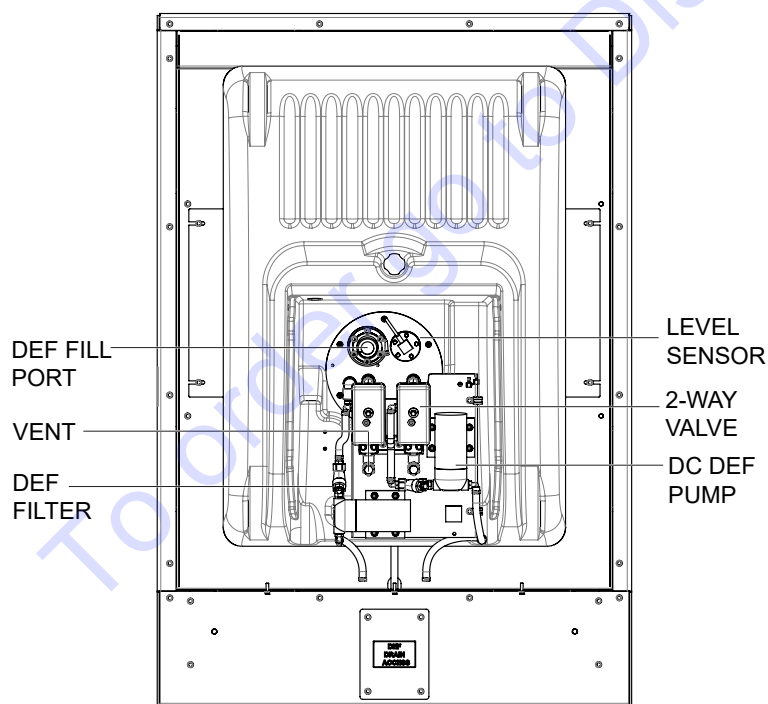
- DEFTANK2 — Dual Auto Fill 100 Gal Fork Pockets
- DEFTANK2KIT — Converts DEFTANK1 to DEFTANK2
- DEFHOSEHEAT — Heated Hose 20 ft (1 each)
- DEFTANKSTACKKITP — 4-Point Lift & Stack Assy (Black Paint)
- DEFTANKSTACKKITG — 4-Point Lift & Stack Assy (Galvanized)
- DEFHEATPAD — Heat Pad 1200W 120VAC
- DEFDISPENSERKIT — Nozzle w/ 20 ft Hose 12VDC Manual Pump

### GENERATOR ADAPTER KITS

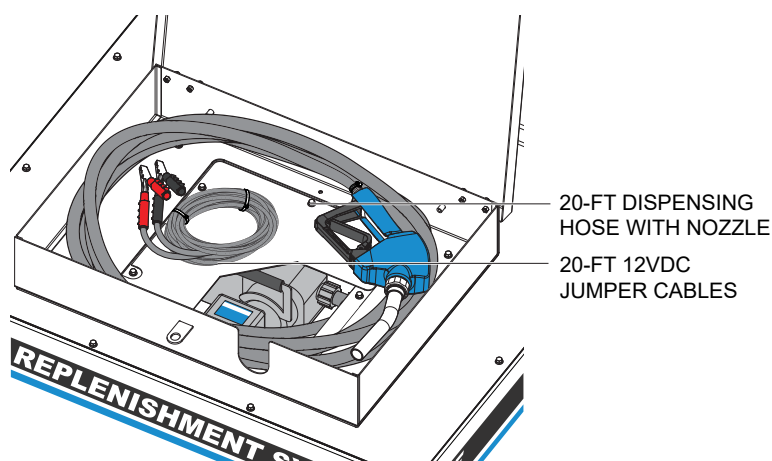
- DEFADAPTERKITA — DEF Unit Connection Kit, DCA70-125 T4F
- DEFADAPTERKITB — DEF Unit Connection Kit, DCA70JD T4F
- DEFADAPTERKITC — DEF Unit Connection Kit, DCA150-300 T4F
- DEFADAPTERKITD — DEF Unit Connection Kit, DCA400 T4F
- DEFADAPTERKITE — DEF Unit Connection Kit, DCA600 T4F



DEFTANK CONTROL PANEL



DEFTANK ASSEMBLY

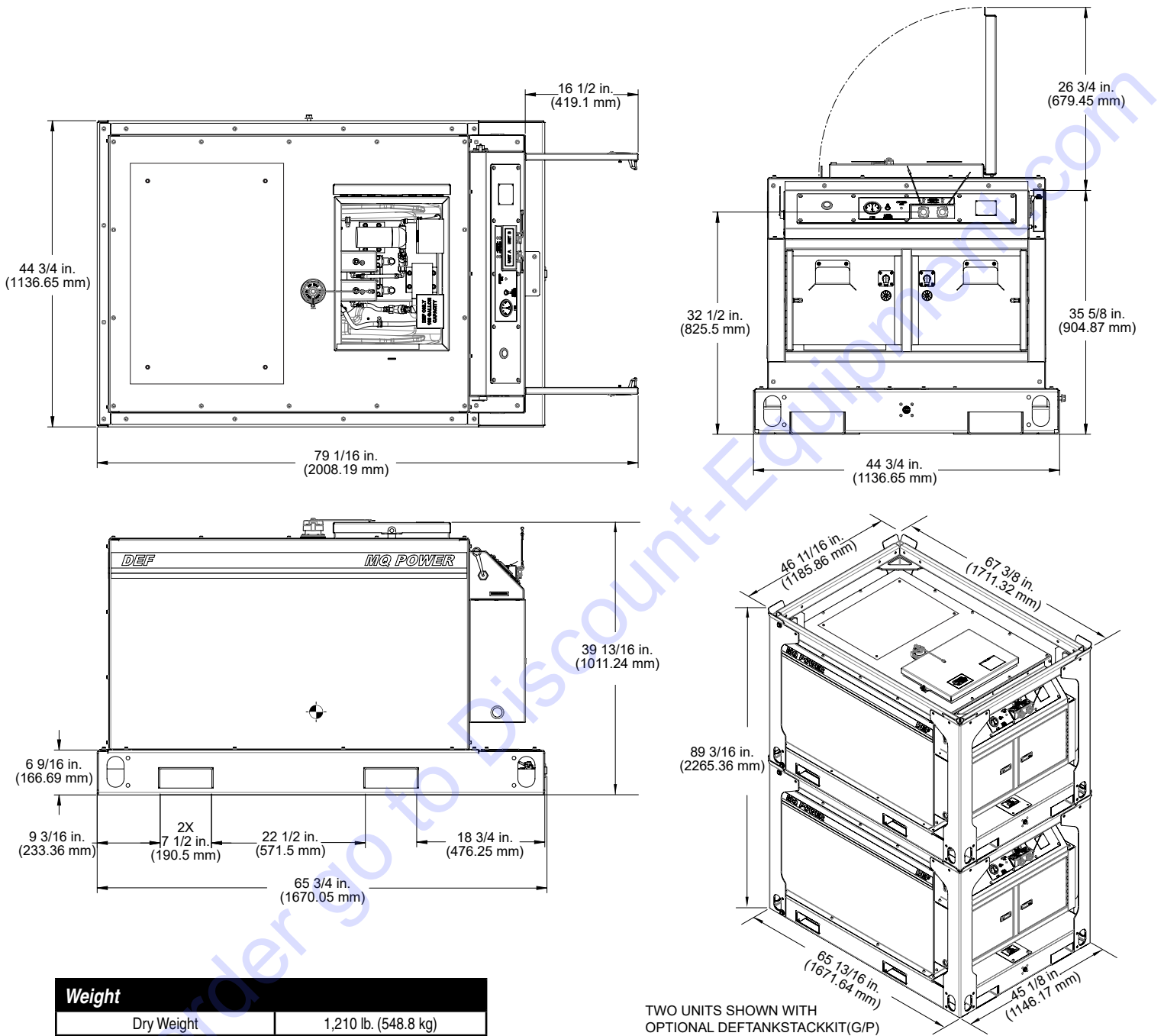


DEFDISPENSERKIT



# DEFTANK

## 100-Gallon Replenishment System



### Weight

Dry Weight	1,210 lb. (548.8 kg)
Wet Weight	2,110 lb. (957.1 kg)
Max. Lifting Eye Capacity	3,000 lbs. (1,360 kg)

### NOTICE

Features and Specifications are subject to change without notice.



**TO PURCHASE THIS PRODUCT PLEASE CONTACT US**



**Equipment Financing and  
Extended Warranties Available**



**Discount-Equipment.com is your online resource for  
commercial and industrial quality parts and equipment sales.**

**561-964-4949**

**visit us on line @ [www.discount-equipment.com](http://www.discount-equipment.com)**

Select an option below to find your Equipment

**Search by Manufacturer**

**Search by Product Type**

**Request a Quote**

We sell worldwide for the brands: Genie, Terex, JLG, MultiQuip, Mikasa, Essick, Whiteman, Mayco, Toro Stone, Diamond Products, Generac Magnum, Airman, Haulotte, Barreto, Power Blanket, Nifty Lift, Atlas Copco, Chicago Pneumatic, Allmand, Miller Curber, Skyjack, Lull, Skytrak, Tsurumi, Husquvarna Target, Stow, Wacker, Sakai, Mi-T-M, Sullair, Basic, Dynapac, MBW, Weber, Bartell, Bennar Newman, Haulotte, Ditch Runner, Menegotti, Morrison, Contec, Buddy, Crown, Edco, Wyco, Bomag, Laymor, EZ Trench, Bil-Jax, F.S. Curtis, Gehl Pavers, Heli, Honda, ICS/PowerGrit, IHI, Partner, Imer, Clipper, MMD, Koshin, Rice, CH&E, General Equipment, Amida, Coleman, NAC, Gradall, Square Shooter, Kent, Stanley, Tamco, Toku, Hatz, Kohler, Robin, Wisconsin, Northrock, Oztec, Toker TK, Rol-Air, APT, Wylie, Ingersoll Rand / Doosan, Innovatech, Con X, Ammann, Mecalac, Makinex, Smith Surface Prep, Small Line, Wanco, Yanmar