



**Service Bulletin No. CB20050725**  
**Subject: Foam Filled Wheels**  
**Model: WBH-16**  
**Product Group: CB**  
**Date: 07/25/2005**

**SERVICE BULLETIN** **Group:**

- Mandatory**     
  **Information**     
  **Recommended Change**

**Series/Parts Affected: WBH-16**

**Machines Affected:**  
**January 2005 and after**

**SERVICE INFORMATION**

It has been discovered that all WBH-16 power buggies manufactured since January 2005 may have had their tires improperly installed after the foam filled process.

**INSTALLATION INSTRUCTIONS**

The following instructions outline the procedure for mounting the drive tire assembly onto the drive hub.

1. Remove the cotter pin (item 1), from the drive-hub 1-1/8" retaining nut (item 2). Using a torque wrench, check the tightness of the retaining nut. It should be 200 ft-lbs. Re-torque retaining nut if necessary.
2. Make sure the 1/2-inch studs (qty. 4), item 3 are securely tightened into the drive hub using Loctite 271™ (item 4).
3. Mount the "CHAMFER" side of the inner tire/rim (item 5) onto the "CHAMFER" side of the drive hub.
4. Install flange hub (item 6) onto studs.
5. Install the 1/2x13 retaining nuts (qty. 4), item 7 onto the studs. Tighten to **85 ft-lbs** using the tighten sequence illustrated in Figure 1B.
6. Mount the outer tire/rim onto the flange hub with the "CHAMFER" side of the rim facing outward (item 8).
7. Install the 1/2x20 retaining cone nuts (qty. 4), item 9 onto the studs. Tighten to **65 ft-lbs** using the tighten sequence illustrated in Figure 1B.

| <b>PARTS INFORMATION</b> |        |             |         |
|--------------------------|--------|-------------|---------|
| Quantity                 | Part # | Description | Remarks |
|                          |        |             |         |
|                          |        |             |         |



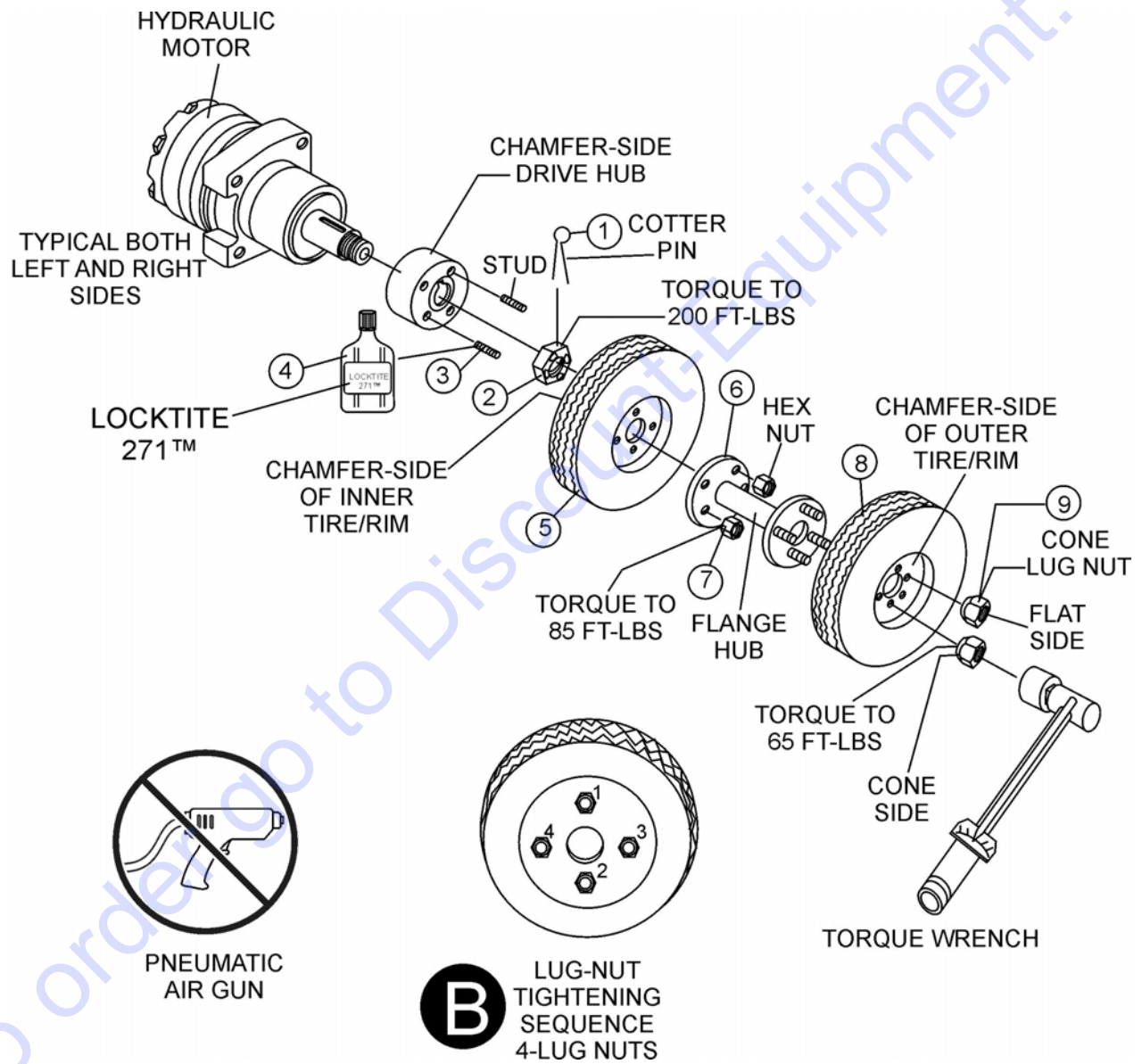


Figure 1 WBH-16 Rim/Tire Mounting Procedure

# PARTS FINDER

**Search Website  
by Part Number**



**Search Manual  
Library For Parts  
Manual & Lookup Part  
Numbers – Purchase  
or Request Quote**

**Search Manuals**

Enter your information to help us find the right parts manual for your machine.

\* Brand:

\* Model:

\* Serial:

\* Part Number:

SEARCH

**Can't Find Part or  
Manual? Request Help  
by Manufacturer,  
Model & Description**

**Parts Order Form**

Please fill in the following information to help us find the right part for your machine.

MANUFACTURER:

MODEL:

DESCRIPTION:

DATE:

TIME:

PHONE:

EMAIL:

ADDRESS:

CITY:

STATE:

ZIP:

COUNTRY:

SEARCH

Discount-Equipment.com is your online resource for quality parts & equipment.

Florida: **561-964-4949** Outside Florida TOLL FREE: **877-690-3101**

**Need parts?**

Click on this link: <http://www.discount-equipment.com/category/5443-parts/> and choose one of the options to help get the right parts and equipment you are looking for. Please have the machine model and serial number available in order to help us get you the correct parts. If you don't find the part on the website or on one of the online manuals, please fill out the request form and one of our experienced staff members will get back to you with a quote for the right part that your machine needs.

We sell worldwide for the brands: Genie, Terex, JLG, MultiQuip, Mikasa, Essick, Whiteman, Mayco, Toro Stone, Diamond Products, Generac Magnum, Airman, Haulotte, Barreto, Power Blanket, Nifty Lift, Atlas Copco, Chicago Pneumatic, Allmand, Miller Curber, Skyjack, Lull, Skytrak, Tsurumi, Husquvarna Target, Stow, Wacker, Sakai, Mi-T-M, Sullair, Basic, Dynapac, MBW, Weber, Bartell, Bennar Newman, Haulotte, Ditch Runner, Menegotti, Morrison, Contec, Buddy, Crown, Edco, Wyco, Bomag, Laymor, EZ Trench, Bil-Jax, F.S. Curtis, Gehl Pavers, Heli, Honda, ICS/PowerGrit, IHI, Partner, Imer, Clipper, MMD, Koshin, Rice, CH&E, General Equipment, Amida, Coleman, NAC, Gradall, Square Shooter, Kent, Stanley, Tamco, Toku, Hatz, Kohler, Robin, Wisconsin, Northrock, Oztec, Toker TK, Rol-Air, APT, Wylie, Ingersoll Rand / Doosan, Innovatech, Con X, Ammann, Mecalac, Makinex, Smith Surface Prep, Small Line, Wanco, Yanmar