

PARTS MANUAL



MODEL MQ62TDD TRASH PUMP (DEUTZ F2L2011/D2011LO2 DIESEL ENGINES)

Revision #1 (07/08/20)



THIS MANUAL MUST ACCOMPANY THE EQUIPMENT AT ALL TIMES.

PARTS FINDER

**Search Website
by Part Number**



**Search Manual
Library For Parts
Manual & Lookup Part
Numbers – Purchase
or Request Quote**

Search Manuals

Enter your information to search for a manual or to purchase a manual or parts.

* Brand:

* Model:

* Serial:

* Part Number:

SEARCH

**Can't Find Part or
Manual? Request Help
by Manufacturer,
Model & Description**

Parts Order Form

Please fill in the following information:

Manufacturer:

Model:

Description:

Quantity:

Part Number:

Part Name:

Part Description:

Part Category:

Part Location:

Part Status:

Part Condition:

Part Material:

Part Color:

Part Weight:

Part Dimensions:

Part Price:

Part Notes:

Submit

Discount-Equipment.com is your online resource for quality parts & equipment.

Florida: **561-964-4949** Outside Florida TOLL FREE: **877-690-3101**

Need parts?

Click on this link: <http://www.discount-equipment.com/category/5443-parts/> and choose one of the options to help get the right parts and equipment you are looking for. Please have the machine model and serial number available in order to help us get you the correct parts. If you don't find the part on the website or on one of the online manuals, please fill out the request form and one of our experienced staff members will get back to you with a quote for the right part that your machine needs.

We sell worldwide for the brands: Genie, Terex, JLG, MultiQuip, Mikasa, Essick, Whiteman, Mayco, Toro Stone, Diamond Products, Generac Magnum, Airman, Haulotte, Barreto, Power Blanket, Nifty Lift, Atlas Copco, Chicago Pneumatic, Allmand, Miller Curber, Skyjack, Lull, Skytrak, Tsurumi, Husquvarna Target, Stow, Wacker, Sakai, Mi-T-M, Sullair, Basic, Dynapac, MBW, Weber, Bartell, Bennar Newman, Haulotte, Ditch Runner, Menegotti, Morrison, Contec, Buddy, Crown, Edco, Wyco, Bomag, Laymor, EZ Trench, Bil-Jax, F.S. Curtis, Gehl Pavers, Heli, Honda, ICS/PowerGrit, IHI, Partner, Imer, Clipper, MMD, Koshin, Rice, CH&E, General Equipment, Amida, Coleman, NAC, Gradall, Square Shooter, Kent, Stanley, Tamco, Toku, Hatz, Kohler, Robin, Wisconsin, Northrock, Oztec, Toker TK, Rol-Air, APT, Wylie, Ingersoll Rand / Doosan, Innovatech, Con X, Ammann, Mecalac, Makinex, Smith Surface Prep, Small Line, Wanco, Yanmar

TABLE OF CONTENTS

MQ62TDD TRASH PUMP

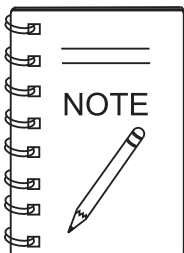
Table of Contents	2
Explanation of Code in Remarks Column	4
Suggested Spare Parts	5

Component Drawings

Nameplate and Decals	6-7
Trash Pump Assembly	8-11
Trailer TRLRMPXF Assembly	12-13
Trailer TRLR50XF Assembly	14-15
Skid Assembly	16-77
Axle Assembly	18-19
Lifting Bail Assembly (TRLRMPXF)	20-21
Lifting Bail Assembly (TRLR50XF)	22-23
Lifting Bail Assembly (Skid)	24-25
Fuel Assembly (TRLRMPXF)	26-27
Fuel Assembly (TRLR50XF)	28-29
Fuel Assembly (Skid)	30-31
Battery Assembly (TRLRMPXF)	32-33
Battery Assembly (TRLR50XF)	34-35
Battery Assembly (Skid)	36-37
Engine Mounting Assembly (TRLRMPXF)	38-39
Engine Mounting Assembly (TRLR50XF)	40-41
Engine Mounting Assembly (Skid)	42-33

Deutz F2L2011/D2011L02 Diesel Engine

Engine Assembly	44-45
Oil Pressure Switch Assembly	46-47
Temperature Transmitter Assembly	48-49
Starter Assembly	50-51
Control Box Assembly (Old Style)	52-53
Control Box Assembly (New Style)	54-55
Air Filter Assembly	56-57
Narrow V-Belt Assembly	58-59
Lubricated Oil Filter Assembly	60-61
Fuel Filter Assembly	62-63



*Specification and part number are
subject to change without notice.*

EXPLANATION OF CODE IN REMARKS COLUMN

The following section explains the different symbols and remarks used in the Parts section of this manual. Use the help numbers found on the back page of the manual if there are any questions.

NOTICE

The contents and part numbers listed in the parts section are subject to change **without notice**. Multiquip does not guarantee the availability of the parts listed.

SAMPLE PARTS LIST

NO.	PART NO.	PART NAME	QTY.	REMARKS
1	12345	BOLT.....	1	INCLUDES ITEMS W/%
2%		WASHER, 1/4 IN.....		NOT SOLD SEPARATELY
2%	12347	WASHER, 3/8 IN....	1	MQ-45T ONLY
3	12348	HOSE		A/R ...MAKE LOCALLY
4	12349	BEARING	1	S/N 2345B AND ABOVE

NO. Column

Unique Symbols — All items with same unique symbol

(@, #, +, %, or >) in the number column belong to the same assembly or kit, which is indicated by a note in the “Remarks” column.

Duplicate Item Numbers — Duplicate numbers indicate multiple part numbers, which are in effect for the same general item, such as different size saw blade guards in use or a part that has been updated on newer versions of the same machine.

NOTICE

When ordering a part that has more than one item number listed, check the remarks column for help in determining the proper part to order.

PART NO. Column

Numbers Used — Part numbers can be indicated by a number, a blank entry, or TBD.

TBD (To Be Determined) is generally used to show a part that has not been assigned a formal part number at the time of publication.

A blank entry generally indicates that the item is not sold separately or is not sold by Multiquip. Other entries will be clarified in the “Remarks” Column.

QTY. Column

Numbers Used — Item quantity can be indicated by a number, a blank entry, or A/R.

A/R (As Required) is generally used for hoses or other parts that are sold in bulk and cut to length.

A blank entry generally indicates that the item is not sold separately. Other entries will be clarified in the “Remarks” Column.

REMARKS Column

Some of the most common notes found in the “Remarks” Column are listed below. Other additional notes needed to describe the item can also be shown.

Assembly/Kit — All items on the parts list with the same unique symbol will be included when this item is purchased.

Indicated by:

“INCLUDES ITEMS W/(unique symbol)”

Serial Number Break — Used to list an effective serial number range where a particular part is used.

Indicated by:

“S/N XXXXX AND BELOW”

“S/N XXXX AND ABOVE”

“S/N XXXX TO S/N XXX”

Specific Model Number Use — Indicates that the part is used only with the specific model number or model number variant listed. It can also be used to show a part is NOT used on a specific model or model number variant.

Indicated by:

“XXXXX ONLY”

“NOT USED ON XXXX”

“Make/Obtain Locally” — Indicates that the part can be purchased at any hardware shop or made out of available items. Examples include battery cables, shims, and certain washers and nuts.

“Not Sold Separately” — Indicates that an item cannot be purchased as a separate item and is either part of an assembly/kit that can be purchased, or is not available for sale through Multiquip.

SUGGESTED SPARE PARTS

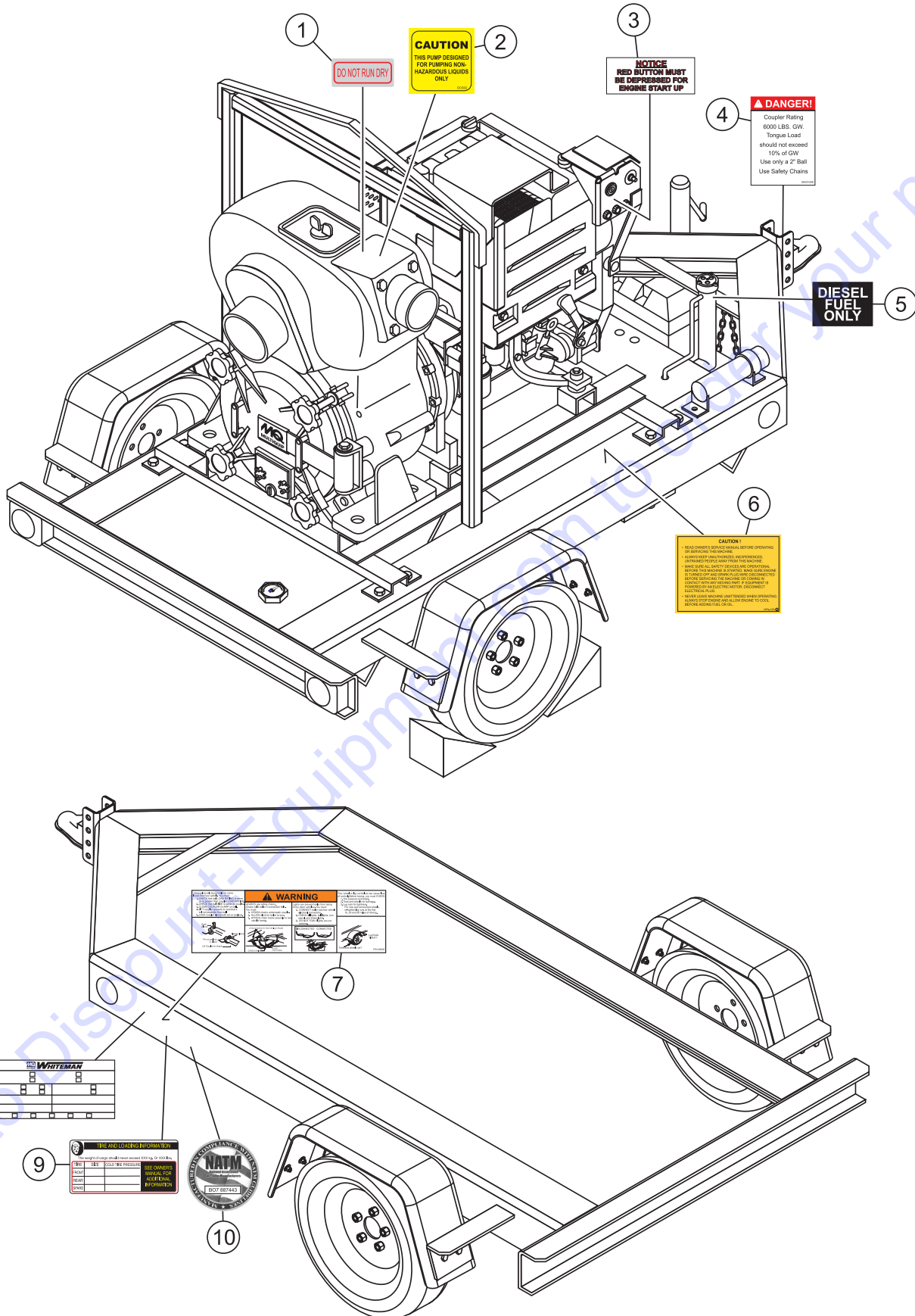
MQ62TDD TRASH PUMP WITH DEUTZ F2L2011/ D2011L02 DIESEL ENGINE

1 to 3 units

<u>QTY.</u>	<u>P/N</u>	<u>DESCRIPTION</u>
3	0801334545	MECHANICAL SEAL
3	0811384576	SLEEVE, SEAL (SHAFT)
3	0483604300	O-RING, FRONT COVER
1	2602000032	IMPELLER
1	4607000700	WEAR PLATE
1	1601350350	CHECK VALVE
1	0862456209	OIL SEAL
1	0670026209	BEARING
1	4607221012	SHAFT
1	0480350380	O-RING, MECHANICAL SEAL
		SLEEVE
1	KITMQ62	KIT, SEALS AND O-RINGS
3	01174416	FILTER, OIL
3	01174696	FILTER, FUEL
3	01179565	V-BELT
1	01182529	IGNITION KEY

Go to Discount-Equipment.com to order your parts

NAMEPLATE AND DECALS

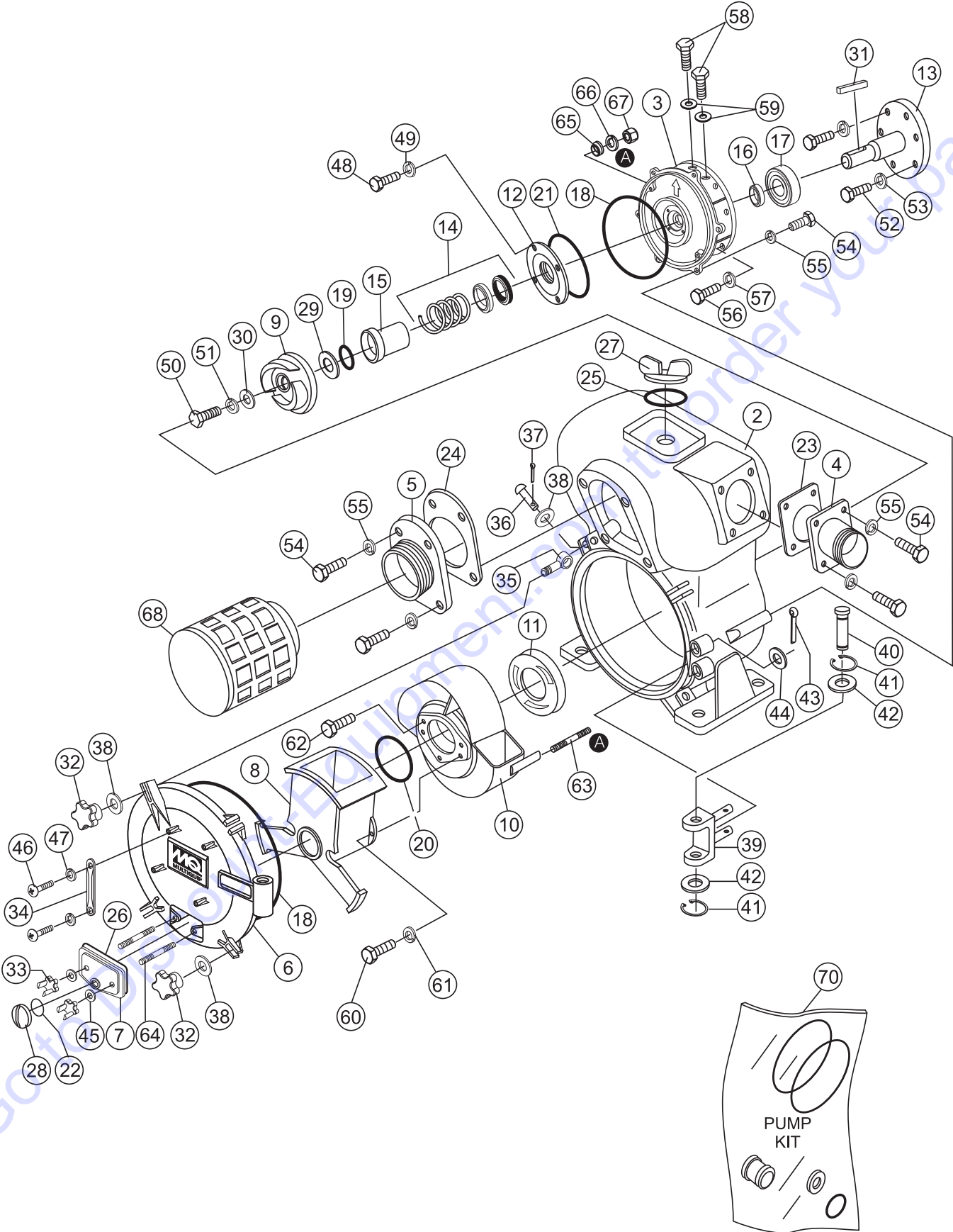


NAMEPLATE AND DECALS

<u>NO.</u>	<u>PART NO.</u>	<u>PART NAME</u>	<u>QTY.</u>	<u>REMARKS</u>
1	7005000	DECAL, DO NOT RUN PUMP DRY	1	
2	DCS02	DECAL, PUMP SAFETY	1	
3		DECAL, CONTROL BOX	1	INCLUDED W/ CONTROL BOX
4	BH21008	DECAL, SAFETY CHAINS	1	
5	M9500500004	DECAL, DIESEL FUEL ONLY	1	
6	NPA-320J	DECAL, CAUTION	1	
7	49002	DECAL, TRLR HITCH/WHEEL WARNING	1	
8	29680	DECAL, MULTIPLE TRAILER VIN	1	
9	17322	DECAL, TIRE AND LOADING INFO	1	
10	29729	DECAL, NATM MANUFACTURER COMPLIANCE	1	

Go to Discount-Equipment.com to order your parts

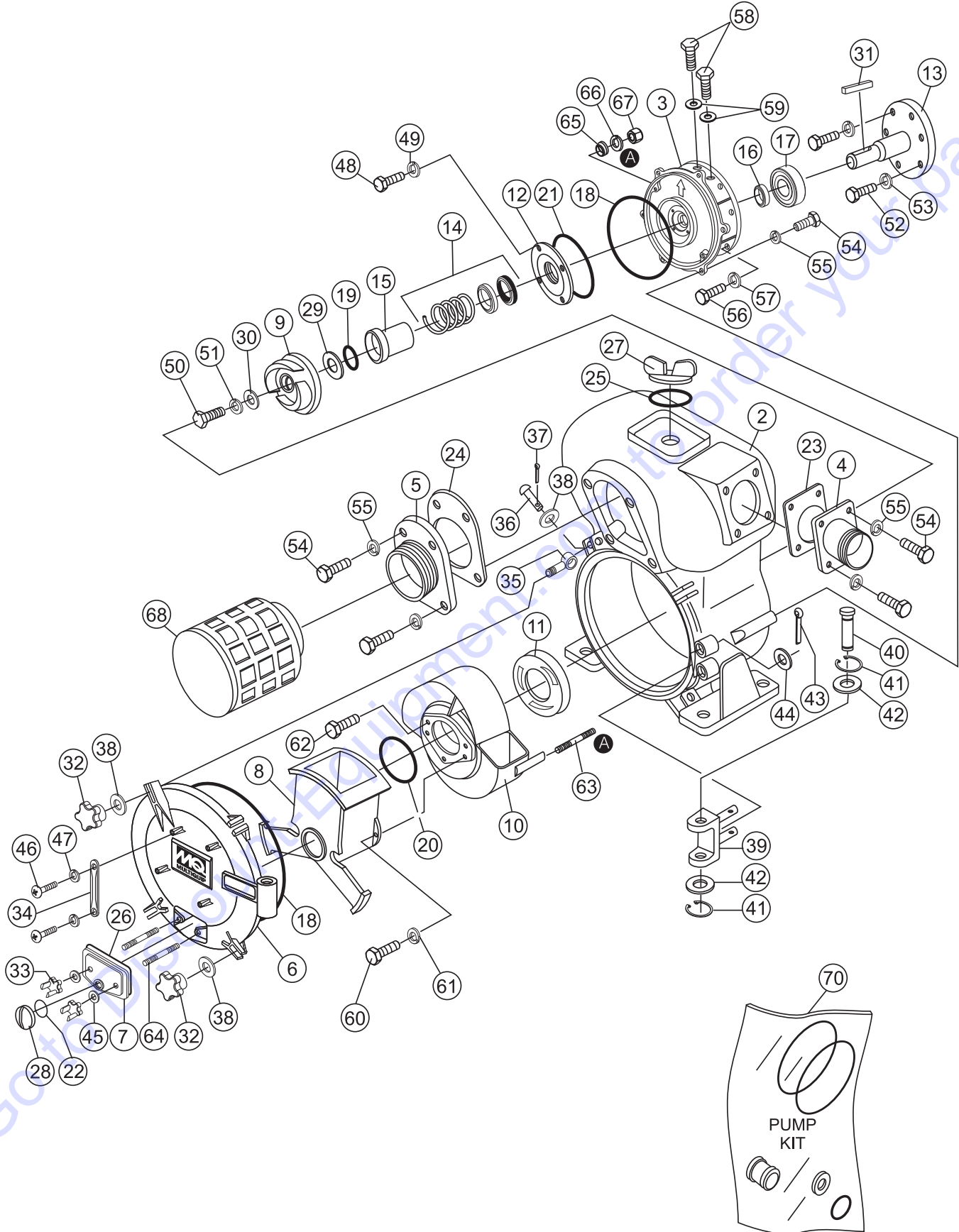
TRASH PUMP ASSY.



TRASH PUMP ASSY.

<u>NO.</u>	<u>PART NO.</u>	<u>PART NAME</u>	<u>QTY.</u>	<u>REMARKS</u>
2	2601000010	CASING	1	
3	26200000240002	CASING COVER	1	REPLACES 2620000022
4	46070000900002	DISCHARGE FLANGE	1	REPLACES 4607000090
5	1603000090	SUCTION FLANGE	1	
6	2601000170	CLEANOUT COVER	1	
7	4609000170	DRAIN COVER	1	
8	2601000800	SUCTION CASE	1	
9	2602000032	IMPELLER	1	
10	2620000130	VOLUTE CASING	1	
11	4607000700	WEAR PLATE	1	
12	4607000750	MECHANICAL SEAL HOUSING	1	
13	4607221012	SHAFT, D-F2L511W	1	
14%	0801334545	MECHANICAL SEAL	1	
15%	0811384576	MECHANICAL SEAL SLEEVE	1	
16%	0862456209	OIL SEAL	1	
17	0670026209	BALL BEARING	1	
18%	0483604300	O-RING (CASING DRAIN COVER)	2	
19%	0480350380	O-RING (MECHANICAL SEAL SLEEVE)	1	
20%	0480571400	O-RING (VOLUTE CASING)	1	
21%	0482201000	O-RING (MECHANICAL SEAL HOUSING)	1	
22	0480350300	O-RING (DRAIN CAP)	1	
23	1601330360	DISCHARGE FLANGE PACKING	1	
24	1601350350	CHECK VALVE	1	
25	0741320503	FILL CAP PACKING	1	
26	1601330380	DRAIN COVER B PACKING	1	
27	06312112020014	FILL CAP	1	REPLACES 0631211202
28	0631211100ASSY	DRAIN CAP	1	REPLACES 0631211100
29	0852856439	ADJUST LINER, SHIM	1-3	
30	46072012400011	IMPELLER WASHER	1	REPLACES 4607201240
31	0511081054	KEY	1	
32	26010001900002	CLEANOUT COVER SET	4	REPLACES 2601000190
33	26010002200002	HANDLE DRAIN KNOB	2	REPLACES 2601000220
34	12471002500002	CLEANOUT COVER HANDLE	2	REPLACES 1247100250
35	2601200270	HINGE BOLT	4	
36	2601200280	HINGE PIN	4	
37	0641400430	SPLIT PIN	4	REPLACES 0642300425
38	0401450160	WASHER	8	
39	2601200260	DRAIN COVER SET HINGE	1	
40	2601200300	HINGE SET PIN	1	
41	0462721915	E-RING, SNAP	2	
42	0401450200	WASHER	2	
43	0642300528	SPLIT PIN	2	
44	0401450160	WASHER	2	
45	031112230	WASHER	2	
46	0141090825	SCREW (DRAIN COVER HANDLE)	4	
47	030208200	WASHER, LOCK	4	

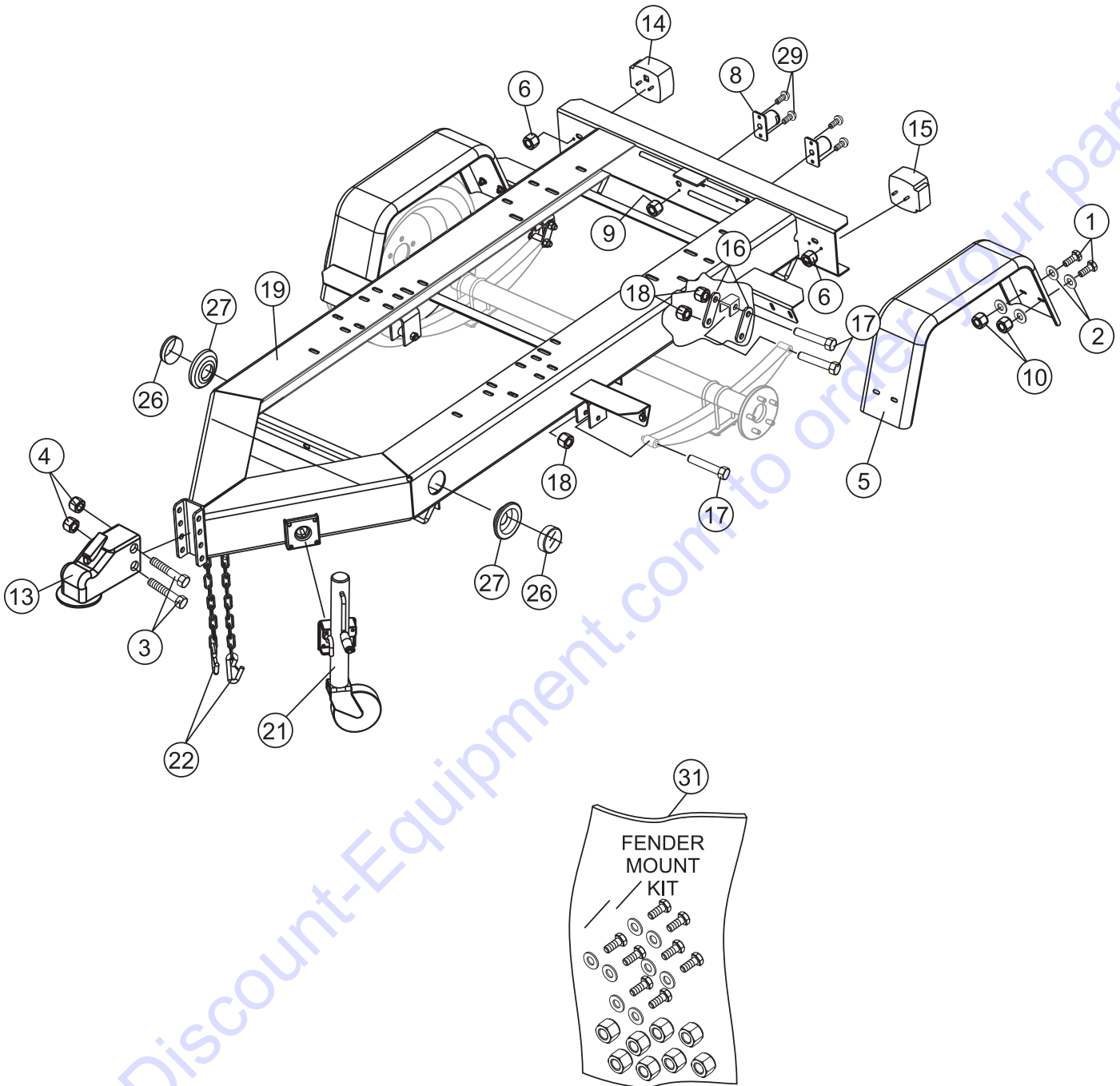
TRASH PUMP ASSY. (CONTINUED)



TRASH PUMP ASSY. (CONTINUED)

<u>NO.</u>	<u>PART NO.</u>	<u>PART NAME</u>	<u>QTY.</u>	<u>REMARKS</u>
48	0105090815	BOLT (MECHANICAL SEAL HOUSING)	4	
49	0451290080	WASHER, LOCK	4	
50	0105091225	BOLT, IMPELLER	1	
51	0451250120	WASHER, LOCK	1	
52	011008040	BOLT, SHAFT	6	
53	030208200	WASHER, LOCK	1	
54	0105051645	BOLT, CASING	14	
55	030216400	WASHER, LOCK	14	
56	012010030	BOLT, CASING COVER	6	
57	030210250	WASHER, LOCK	6	
58	0105052030	BOLT (OIL CAP)	3	
59	4607287110	OIL CAP WASHER	3	
60	012010030	BOLT (SUCTION CASE)	2	
61	030212300	WASHER, LOCK	2	
62	014210020	CAP SCREW (WEAR PLATE)	3	REPLACES 0131191020
63	0151161035	STUDIO BOLT (VOLUTE CASING)	2	
64	0151151240	STUD BOLT (DRAIN COVER B)	2	
65	0458220100	SEAL WASHER	2	
66	030210250	WASHER, LOCK	2	
67	0204450100	NUT VOLUTE CASING	2	
68	0742062150	STRAINER	1	
70	KITMQ62	KIT, SEAL AND O-RINGS	1	INCLUDES ITEMS W/%

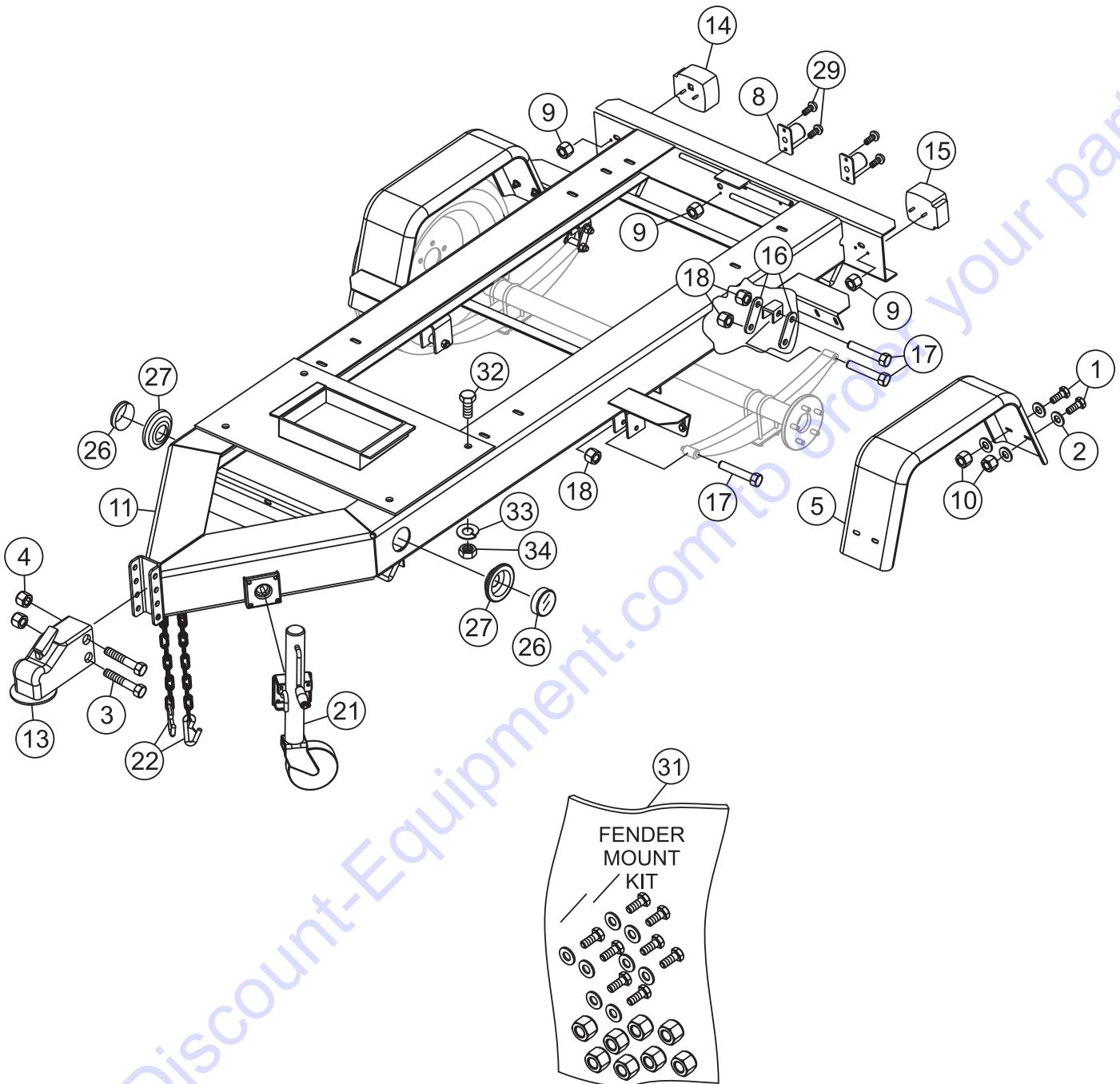
TRAILER TRLRMPXF ASSY.



TRAILER TRLRMPXF ASSY.

<u>NO.</u>	<u>PART NO.</u>	<u>PART NAME</u>	<u>QTY.</u>	<u>REMARKS</u>
1	0205	SCREW, HHC 3/8 - 16 x 1	8	
2	4001	WASHER, FLAT USS 3/8 PLD	16	
3	9502	SCREW, HHC 5/8 - 11 x 4-1/2 GR8	2	
4	9503	NUT, NYLOC 5/8 - 11	2	
5	9505	FENDER, 8 x 30 x 13	2	
6\$%	10019	NUT, NYLOC 10-32	4	
8	9514	LIGHT ASM., LICENSE PLATE	2	
9	10019	NUT, NYLOC 10-32	4	
10	10133	NUT, NYLOC 3/8 - 16	8	
13	29228	COUPLER, 2" BALL 600# GVWR	1	
14	29242	LIGHT, TAIL RT (CURB) SIDE M440	1	INCLUDES ITEMS W/\$
15	29243	LIGHT, TAIL LT (ROAD) SIDE M440L	1	INCLUDES ITEMS W/%
16	29247	SHACKLE, AXLE MOUNTING	4	
17	29248	SCREW, HHC 9/16 - 18	6	
18	29249	NUT, 9/16-18 AXLE MOUNTING, N-2	6	
19	29370	FRAME, W/A TRLRMP	1	
21	29496	JACK, SIDEWIND 10", BOLT THRU, .5 PIN W/ WHEEL	1	
22	29572	CHAIN ASM., SAFETY 7600 LB	2	
26	29898	LIGHT, 2 - 1/2 SIDE MARKER, AMBER, 143A	2	
27	29900	GROMMET W/ WIRE KIT, 2 - 1/2", 14248K	2	
29	5065 B	SCREW, PHP 10 - 32 x 1/2	4	
31	29754	FENDER MOUNT KIT	1	

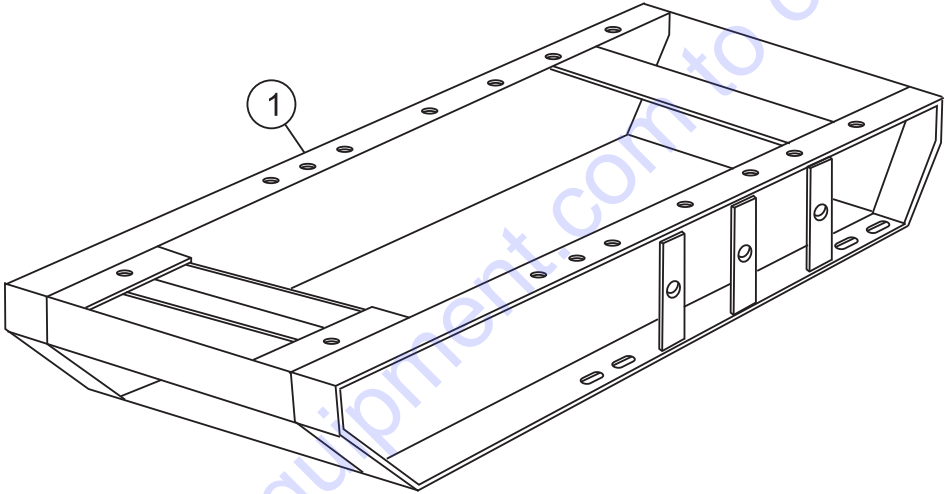
TRAILER TRLR50XF ASSY.



TRAILER TRLR50XF ASSY.

<u>NO.</u>	<u>PART NO.</u>	<u>PART NAME</u>	<u>QTY.</u>	<u>REMARKS</u>
1	0205	SCREW, HHC 3/8 - 16 x 1	8	
2	4001	WASHER, FLAT USS 3/8 PLD	16	
3	9502	SCREW, HHC 5/8 - 11 x 4-1/2 GR8	2	
4	9503	NUT, NYLOC 5/8 - 11	2	
5	9505	FENDER, 8 x 30 x 13	2	
8	9514	LIGHT ASM., LICENSE PLATE	2	
9	10019	NUT, NYLOC 10-32	8	
10	10133	NUT, NYLOC 3/8 - 16	8	
11	19043	FRAME, W/A TRLR 50W	1	
13	29228	COUPLER, 2" BALL 600# GVWR	1	
14	29242	LIGHT, TAIL RT (CURB) SIDE M440	1	
15	29243	LIGHT, TAIL LT (ROAD) SIDE M440L	1	
16	29247	SHACKLE, AXLE MOUNTING	4	
17	29248	SCREW, HHC 9/16 - 18	6	
18	29249	NUT, 9/16-18 AXLE MOUNTING N-2	6	
21	29496	JACK, SIDEWIND 10", BOLT THRU, .5 PIN W/ WHEEL	1	
22	29572	CHAIN ASM., SAFETY 7600 LB	2	
26	29898	LIGHT, 2 - 1/2 SIDE MARKER, AMBER, 143A	2	
27	29900	GROMMET W/ WIRE KIT, 2 - 1/2", 14248K	2	
29	5065 B	SCREW, PHP 10 - 32 x 1/2	4	
31	29754	FENDER MOUNT KIT	1	
32	6109210	BOLT, 1/2 - 13 x 1-1/2	4	
33	86109180	LOCK, 1/2 WASHER	4	
34	6109160	1/2 NUT	4	

SKID ASSY.

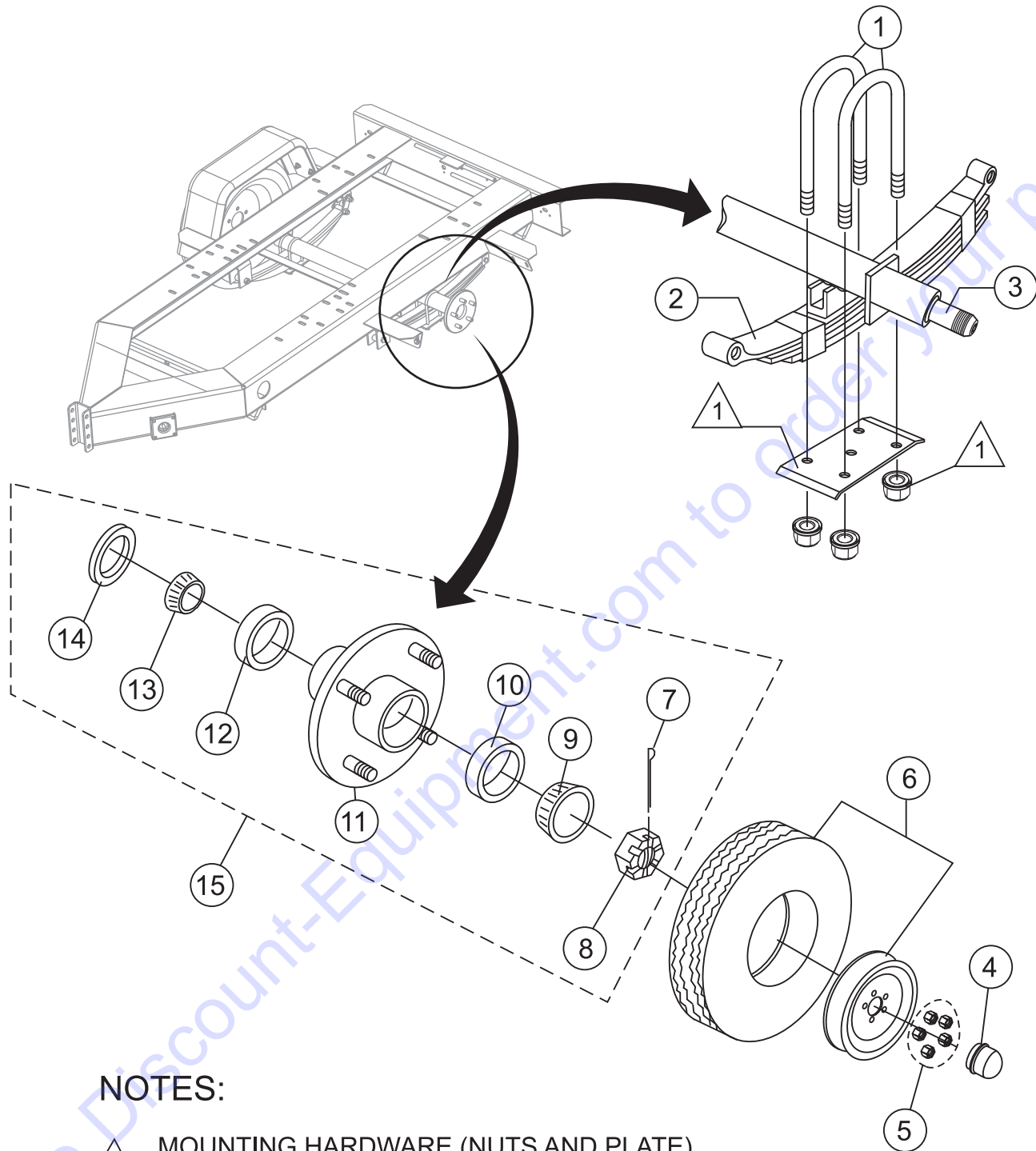


SKID ASSY.

<u>NO.</u>	<u>PART NO.</u>	<u>PART NAME</u>	<u>QTY.</u>	<u>REMARKS</u>
1	19091	SKID ASSY.	1	

Go to Discount-Equipment.com to order your parts

AXLE ASSY.



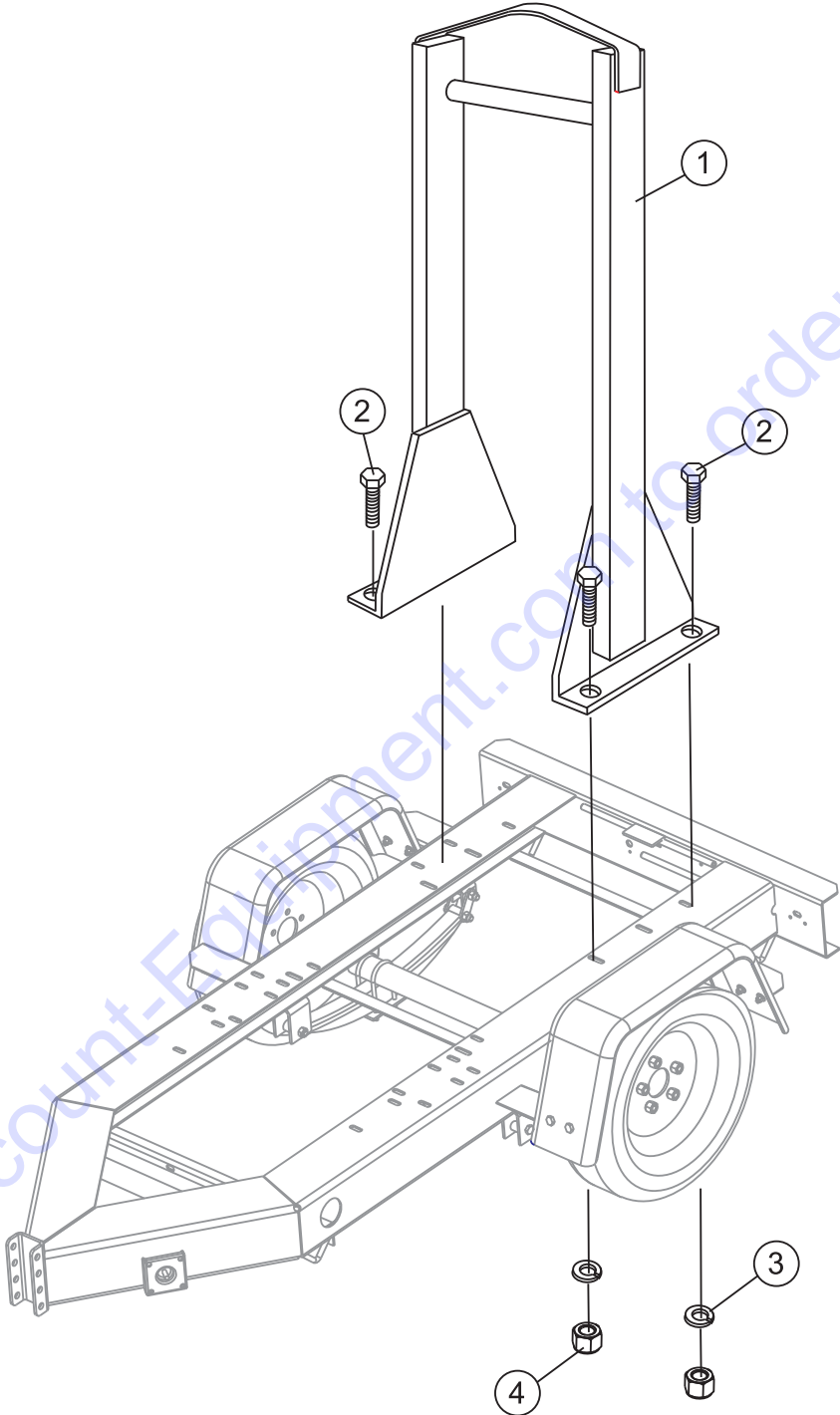
NOTES:

- 1 MOUNTING HARDWARE (NUTS AND PLATE) INCLUDED WITH U-BOLTS (ITEM 1).

AXLE ASSY.

<u>NO.</u>	<u>PART NO.</u>	<u>PART NAME</u>	<u>QTY.</u>	<u>REMARKS</u>
1	29381U	KIT, U-BOLT	4	
2	29381S	SPRING, 4 LEAF 25.25	2	
3	29381B	AXLE BEAM	1	
4	46749	DUST CAP	2	HENDERSON
5	29755	LUG NUT KIT	1	
6	19045	TIRE/RIM	2	
7%	491688	COTTER PIN	1	
8%	114	SPINDLE NUT	1	HENDERSON
9%	L44649	OUTER BEARING CONE	1	HENDERSON
10%	L44610	OUTER BEARING CUP	1	HENDERSON
11%	10-215S	IDLER HUB, 5 X 4.5"	1	HENDERSON
12%	L68111	INNER BEARING CUP	1	HENDERSON
13%	L68149	INNER BEARING CONE	1	HENDERSON
14%	58846	GREASE SEAL	1	HENDERSON
15	29381H	HUB KIT	1	INCLUDES ITEMS W/%

LIFTING BAIL ASSY. (TRLRMPXF)

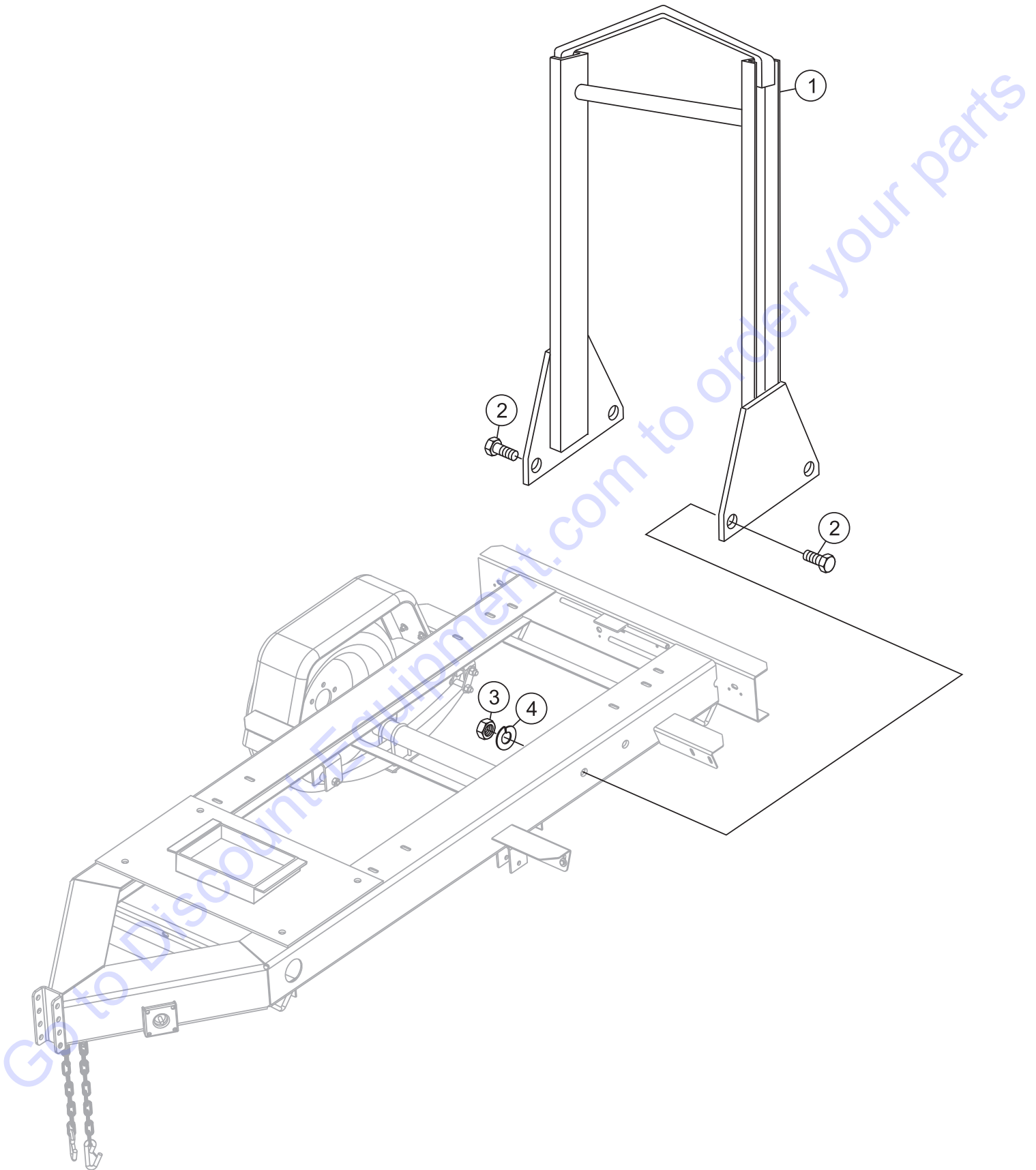


LIFTING BAIL ASSY. (TRLRMPXF)

<u>NO.</u>	<u>PART NO.</u>	<u>PART NAME</u>	<u>QTY.</u>	<u>REMARKS</u>
1	19092	LIFTING BAIL	1	
2	0105051640	16 X 40 BOLT	4	
3	2103200	WASHER, LOCK	4	
4	3019091	NUT	4	

Go to Discount-Equipment.com to order your parts

LIFTING BAIL ASSY. (TRLR50XF)

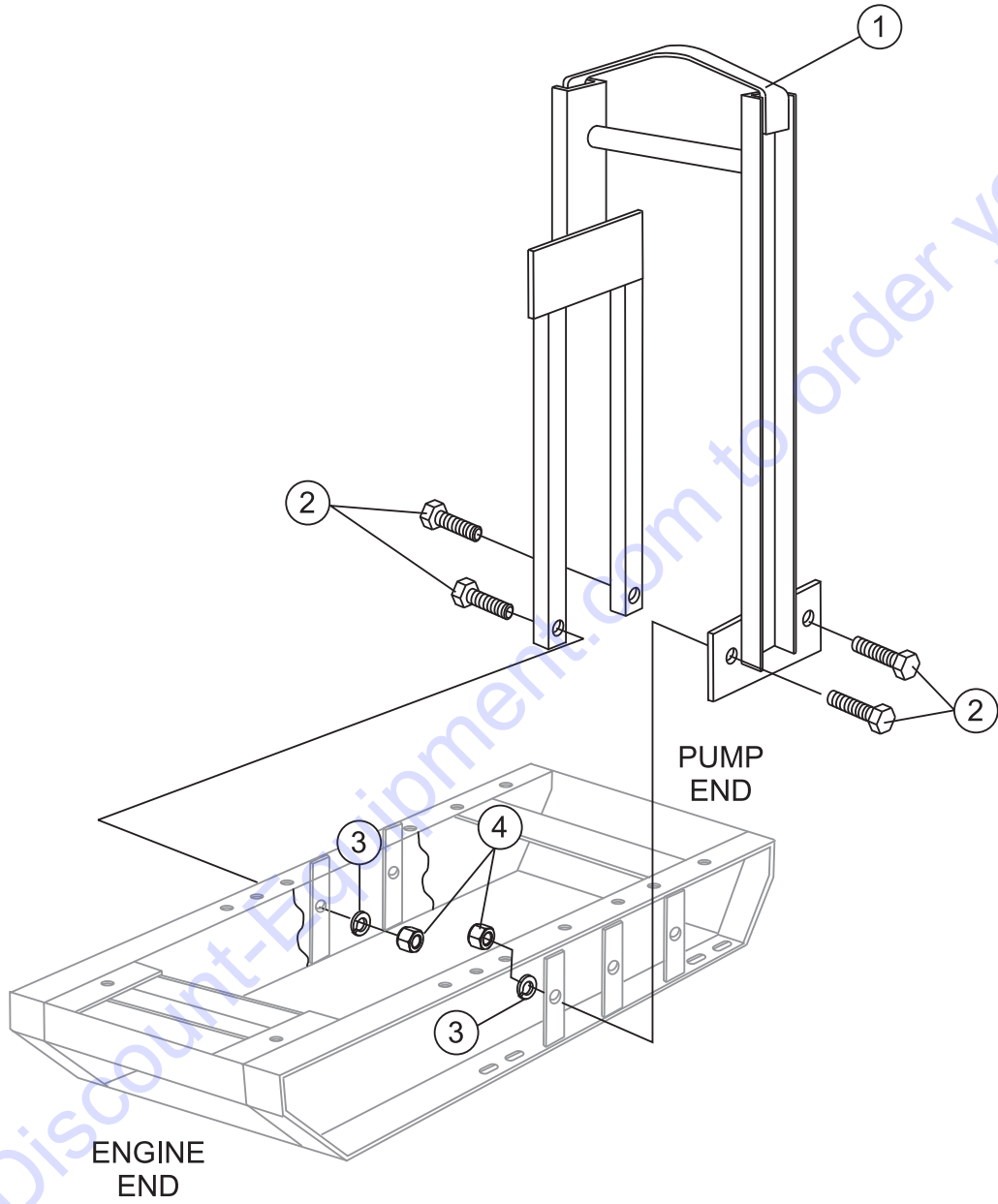


LIFTING BAIL ASSY. (TRLR50XF)

<u>NO.</u>	<u>PART NO.</u>	<u>PART NAME</u>	<u>QTY.</u>	<u>REMARKS</u>
1	50XF9102	LIFTING BAIL	1	
2	0105051640	16 X 40 BOLT	4	
3	020316130	NUT M16	4	
4	030216400	16MM WASHER, LOCK	4	

Go to Discount-Equipment.com to order your parts

LIFTING BAIL ASSY. (SKID)

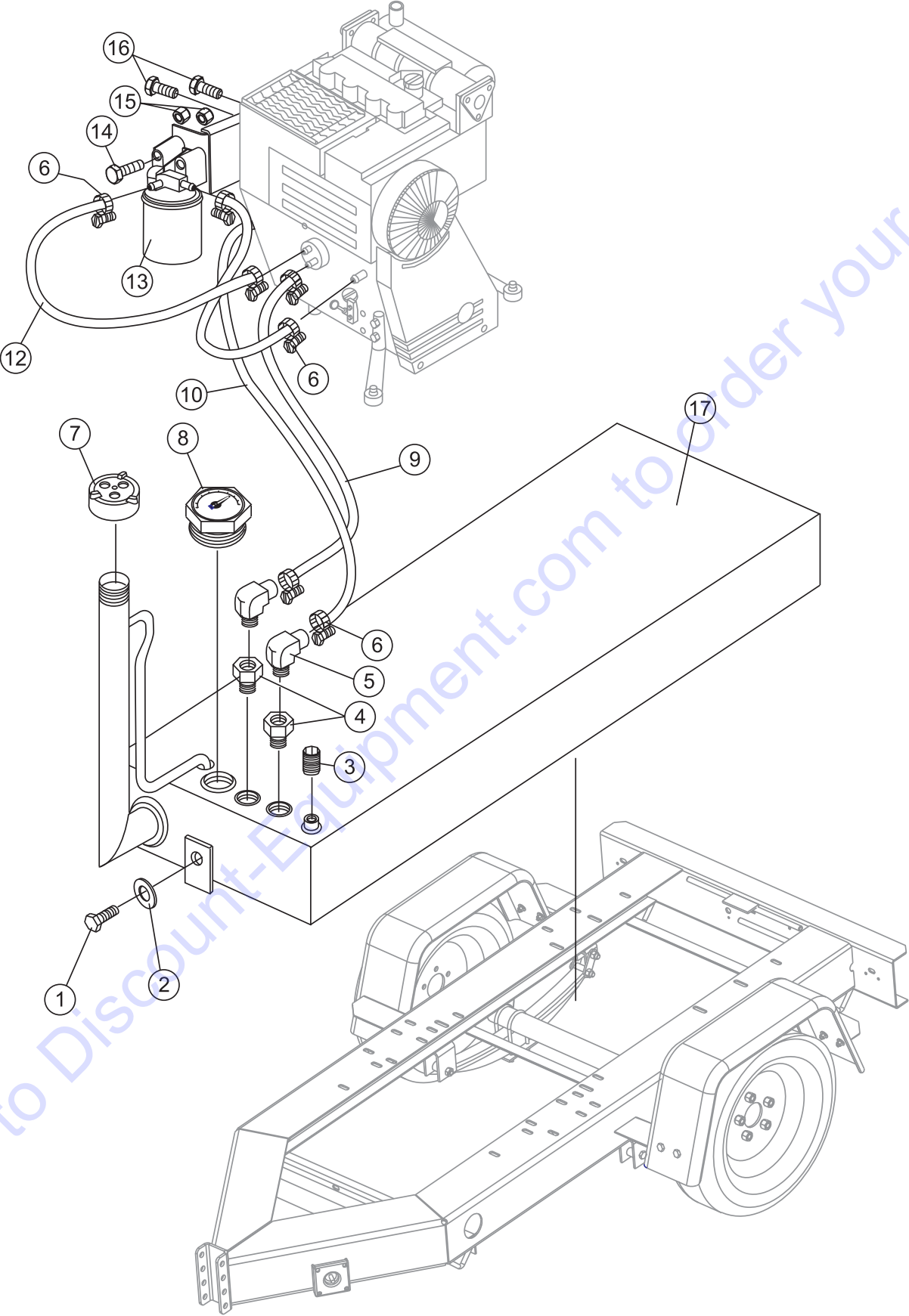


LIFTING BAIL ASSY. (SKID)

<u>NO.</u>	<u>PART NO.</u>	<u>PART NAME</u>	<u>QTY.</u>	<u>REMARKS</u>
1	19092	LIFTING BAIL	1	
2	6109210	1/2 -13 x 1-1/2 BOLT	4	
3	6109810	1/2 WASHER, LOCK	4	
4	6109160	1/2 NUT	4	

Go to Discount-Equipment.com to order your parts

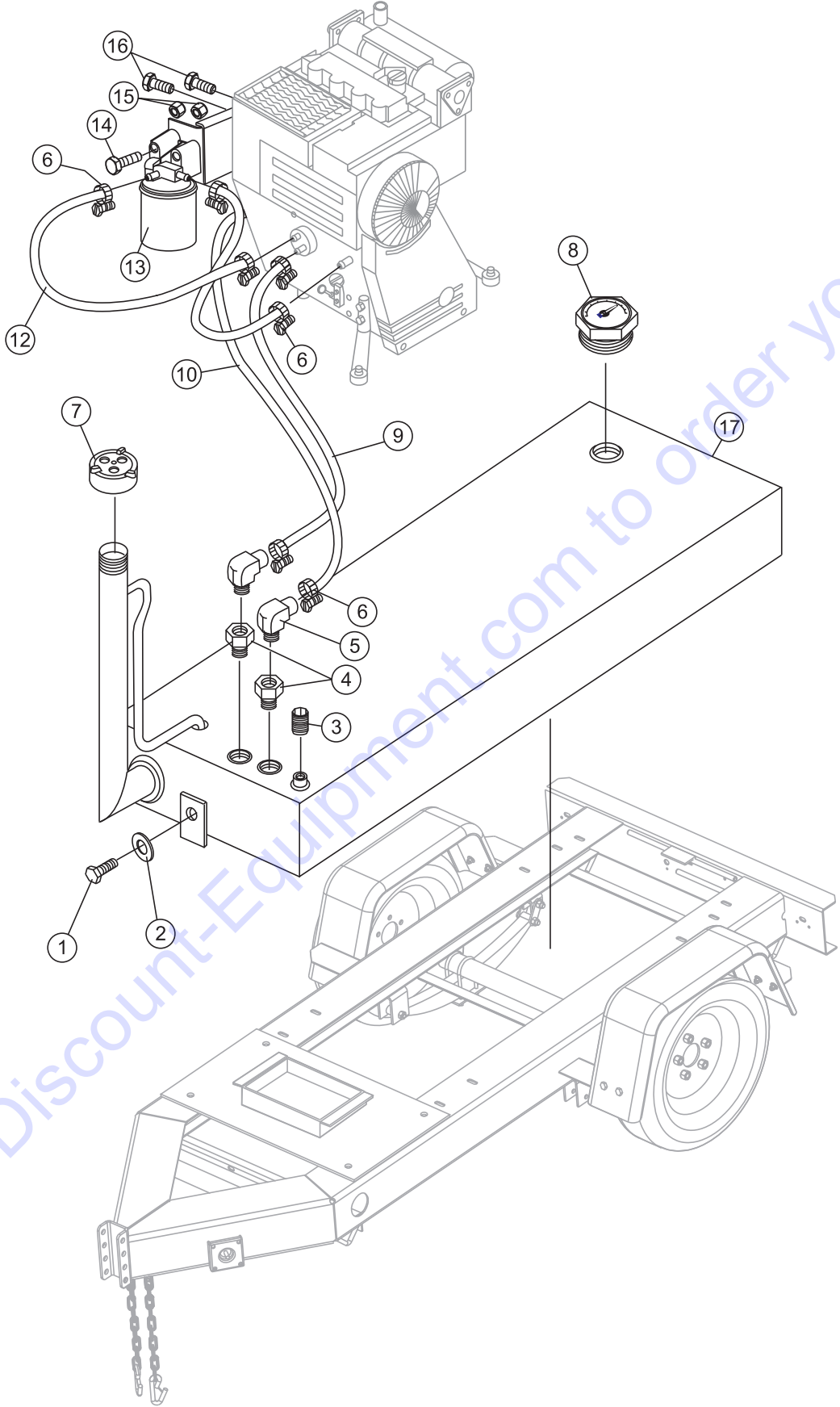
FUEL ASSY. (TRLRMPXF)



FUEL ASSY. (TRLRMPXF)

<u>NO.</u>	<u>PART NO.</u>	<u>PART NAME</u>	<u>QTY.</u>	<u>REMARKS</u>
1	6109210	1/2 - 13 x 1-1/2 BOLT	1	
2	6109208	WASHER, FLAT	1	
3%		PLUG	1	
4	5284	PICK UP TUBE	2	
5	84454	FITTING, 90°	2	
6	6109152	CLAMP	7	
7	7V3177002	CAP	1	
8	EE58784	FUEL GAUGE	1	
9	6636A	HOSE, 77"	1	
10	6635BULK	HOSE, 77"	1	
12		HOSE	1	INCLUDED W/ENGINE
13	01174696	FUEL FILTER	1	
14	XXXXX	5/16 x 2-1/2 SHOP STOCK	1	
15	XXXXX	NUT	2	
16	XXXXX	10 x 20 BOLT	2	
17	31223MP-30FGC	FUEL CELL	1	INCLUDES ITEMS W/%

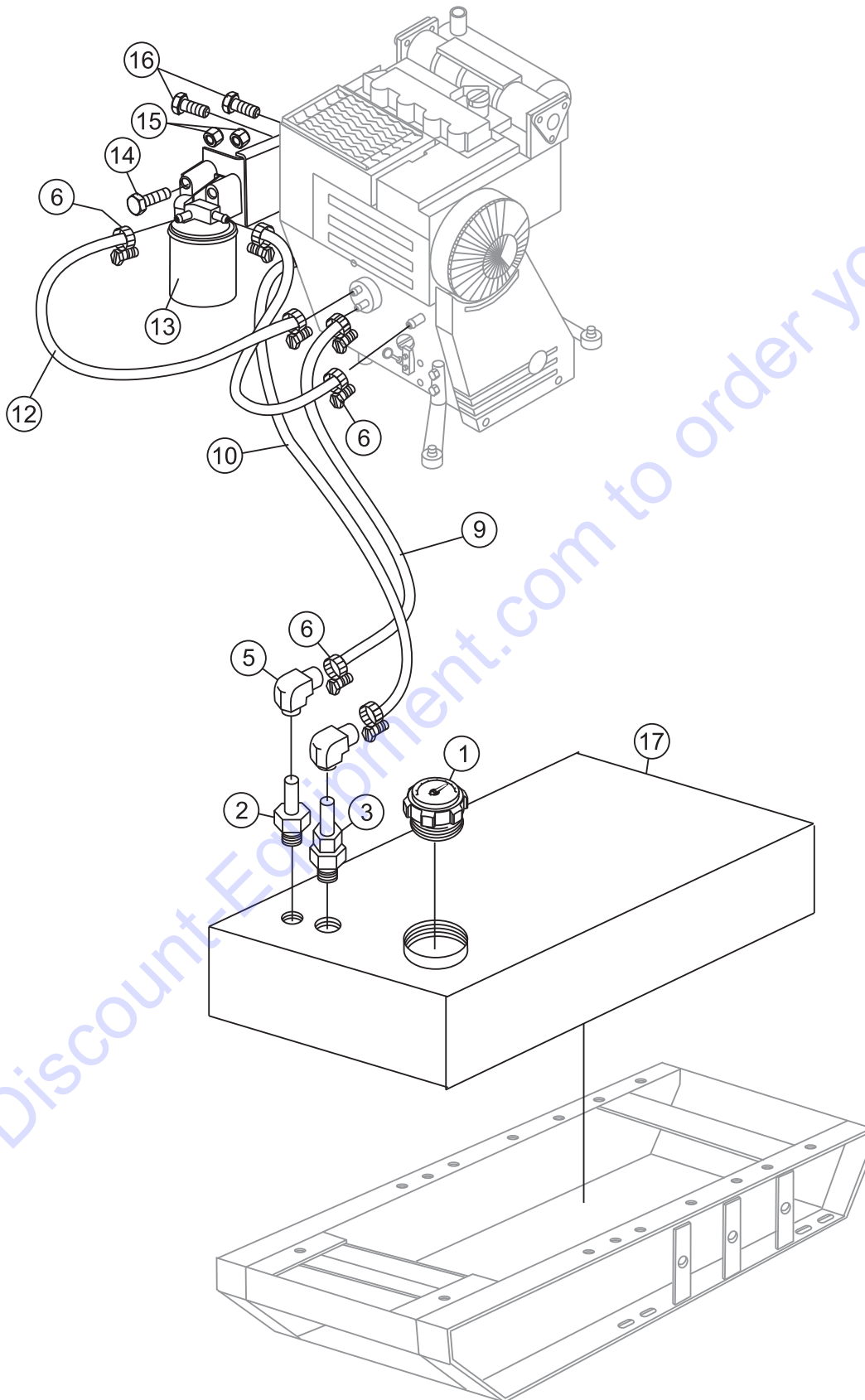
FUEL ASSY. (TRLR50XF)



FUEL ASSY. (TRLR50XF)

<u>NO.</u>	<u>PART NO.</u>	<u>PART NAME</u>	<u>QTY.</u>	<u>REMARKS</u>
1	6109210	1/2 - 13 x 1-1/2 BOLT	1	
2	6109208	WASHER, FLAT	1	
3%		PLUG	1	
4	5284	PICK UP TUBE	2	
5	84454	FITTING, 90°	2	
6	6109152	CLAMP	7	
7	7V3177002	CAP	1	
8	EE58784	FUEL GAUGE	1	
9	6636A	HOSE, 77"	1	
10	6635BULK	HOSE, 77"	1	
12		HOSE	1	INCLUDED W/ENGINE
13	01174696	FUEL FILTER	1	
14	XXXXX	5/16 x 2-1/2 SHOP STOCK	1	
15	XXXXX	NUT	2	
16	XXXXX	10 x 20 BOLT	2	
17	3122302E-41FGC	FUEL CELL	1	INCLUDES ITEMS W/%

FUEL ASSY. (SKID)

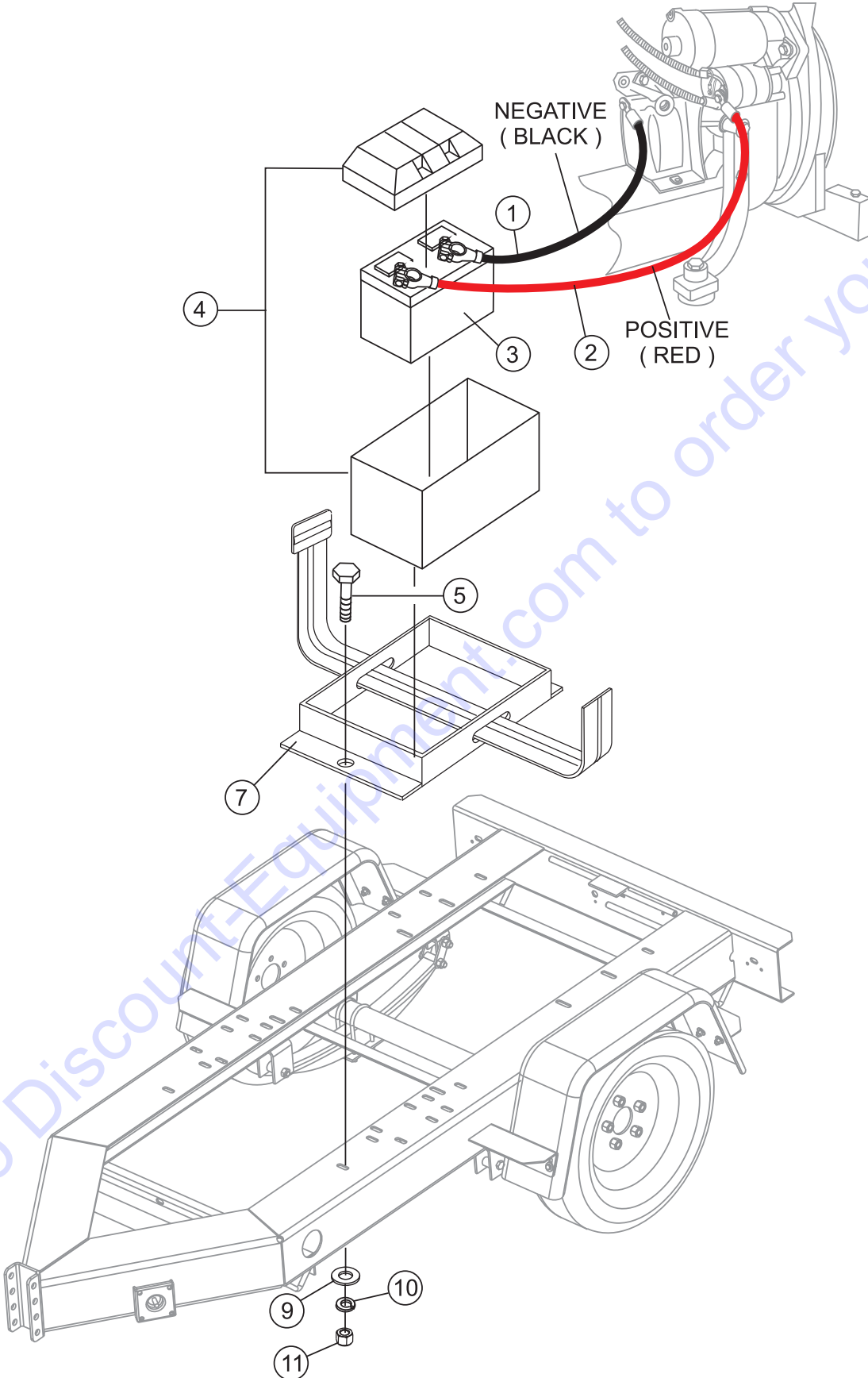


FUEL ASSY. (SKID)

<u>NO.</u>	<u>PART NO.</u>	<u>PART NAME</u>	<u>QTY.</u>	<u>REMARKS</u>
1	EE58784	FUEL GAUGE	1	
2	XXXXX	FITTING	1	
3	XXXXX	FITTING	1	
5	XXXXX	FITTING, 90°	2	
6	6109152	CLAMP	7	
9	XXXXX	HOSE	1	
10	XXXXX	HOSE	1	
12	XXXXX	HOSE	1	
13	XXXXX	FUEL FILTER	1	
14	XXXXX	5/16 x 2-1/2 SHOP STOCK	1	
15	XXXXX	NUT	2	
16	XXXXX	10 x 20 BOLT	2	
17	XXXXX	FUEL CELL	1	

Go to Discount-Equipment.com to order your parts

BATTERY ASSY. (TRLRMPXF)



PARTS FINDER

**Search Website
by Part Number**



**Search Manual
Library For Parts
Manual & Lookup Part
Numbers – Purchase
or Request Quote**

Search Manuals

Enter your information to help us find the right parts manual for your machine.

* Brand:

* Model:

* Serial:

* Part Number:

SEARCH

**Can't Find Part or
Manual? Request Help
by Manufacturer,
Model & Description**

Parts Order Form

Please fill in the following information to help us find the right part for your machine.

Manufacturer:	<input type="text"/>
Model:	<input type="text"/>
Description:	<input type="text"/>
Part Number:	<input type="text"/>
Quantity:	<input type="text"/>
Notes:	<input type="text"/>

Submit

Discount-Equipment.com is your online resource for quality parts & equipment.

Florida: **561-964-4949** Outside Florida TOLL FREE: **877-690-3101**

Need parts?

Click on this link: <http://www.discount-equipment.com/category/5443-parts/> and choose one of the options to help get the right parts and equipment you are looking for. Please have the machine model and serial number available in order to help us get you the correct parts. If you don't find the part on the website or on one of the online manuals, please fill out the request form and one of our experienced staff members will get back to you with a quote for the right part that your machine needs.

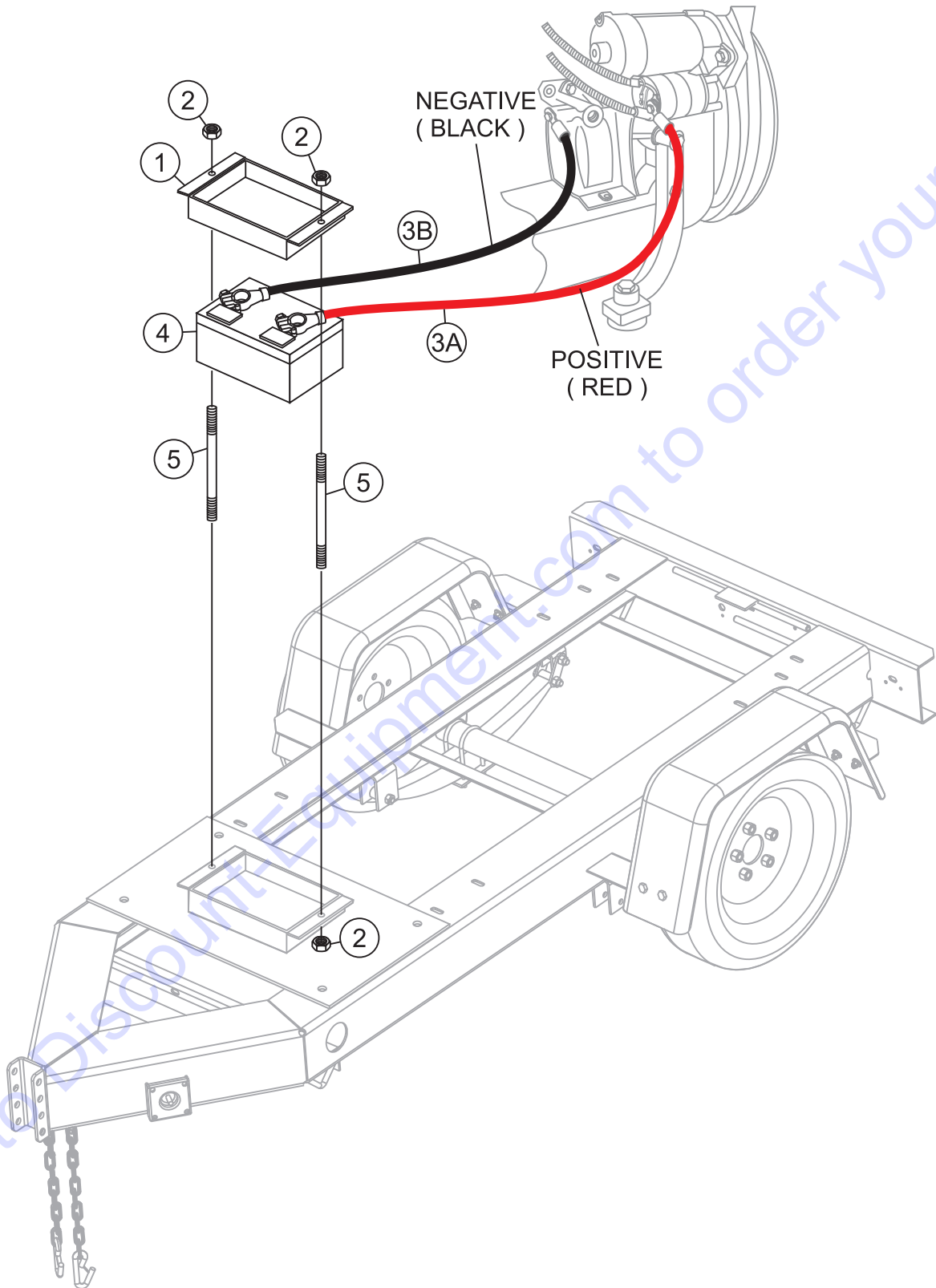
We sell worldwide for the brands: Genie, Terex, JLG, MultiQuip, Mikasa, Essick, Whiteman, Mayco, Toro Stone, Diamond Products, Generac Magnum, Airman, Haulotte, Barreto, Power Blanket, Nifty Lift, Atlas Copco, Chicago Pneumatic, Allmand, Miller Curber, Skyjack, Lull, Skytrak, Tsurumi, Husquvarna Target, Stow, Wacker, Sakai, Mi-T-M, Sullair, Basic, Dynapac, MBW, Weber, Bartell, Bennar Newman, Haulotte, Ditch Runner, Menegotti, Morrison, Contec, Buddy, Crown, Edco, Wyco, Bomag, Laymor, EZ Trench, Bil-Jax, F.S. Curtis, Gehl Pavers, Heli, Honda, ICS/PowerGrit, IHI, Partner, Imer, Clipper, MMD, Koshin, Rice, CH&E, General Equipment, Amida, Coleman, NAC, Gradall, Square Shooter, Kent, Stanley, Tamco, Toku, Hatz, Kohler, Robin, Wisconsin, Northrock, Oztec, Toker TK, Rol-Air, APT, Wylie, Ingersoll Rand / Doosan, Innovatech, Con X, Ammann, Mecalac, Makinex, Smith Surface Prep, Small Line, Wanco, Yanmar

BATTERY ASSY. (TRLRMPXF)

<u>NO.</u>	<u>PART NO.</u>	<u>PART NAME</u>	<u>QTY.</u>	<u>REMARKS</u>
1	34596	NEGATIVE BATTERY CABLE	1	
2	34597	POSITIVE BATTERY CABLE	1	
3	0165306531	BATTERY	1	
4	34506	BATTERY BOX	1	
5	XXXXXX	BOLT, 5/16 X 1-1/4	1	
7	6109100	BATTERY HOLD DOWN	1	
9	2101403	WASHER, FLAT	1	
10	2103200	WASHER, LOCK	1	
11	3019091	NUT	1	

Go to Discount-Equipment.com to order your parts

BATTERY ASSY. (TRLR50XF)

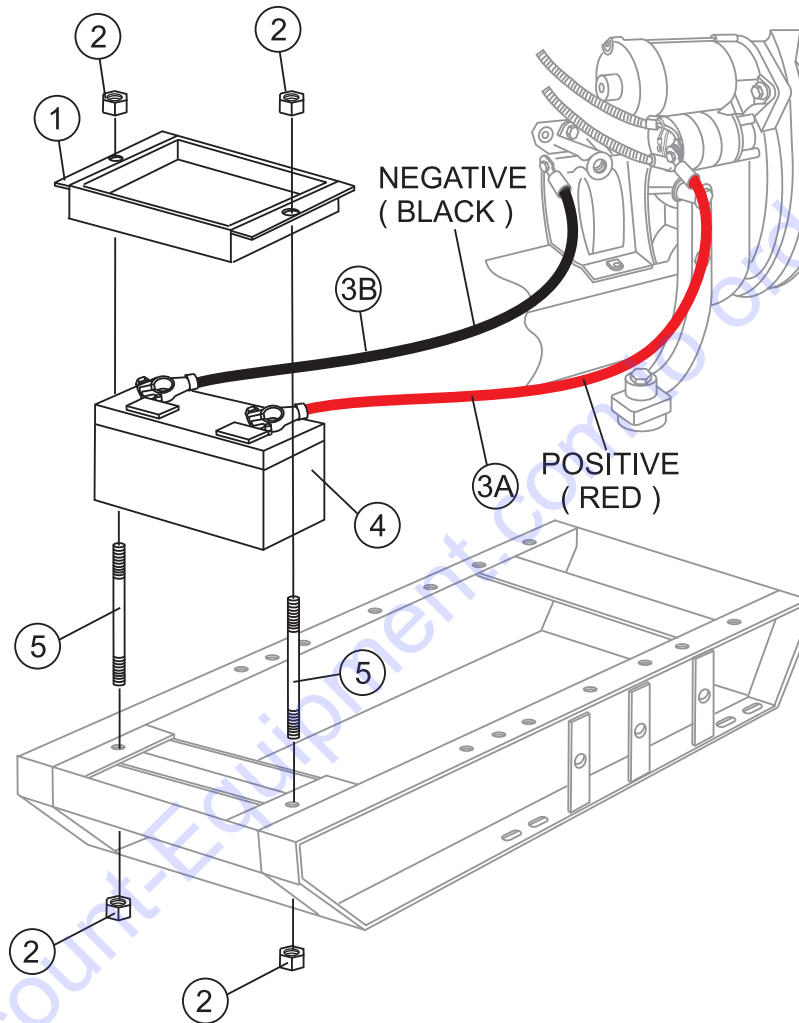


BATTERY ASSY. (TRLR50XF)

<u>NO.</u>	<u>PART NO.</u>	<u>PART NAME</u>	<u>QTY.</u>	<u>REMARKS</u>
1	6109100	BATTERY HOLD DOWN	1	
2	3019091	NUT	4	
3A	34597	POSITIVE BATTERY CABLE	1	
3B	34596	NEGATIVE BATTERY CABLE	1	
4	0165306531	BATTERY	1	
5	6109108	BOLT, BATTERY HOLD DOWN	2	

Go to Discount-Equipment.com to order your parts

BATTERY ASSY. (SKID)

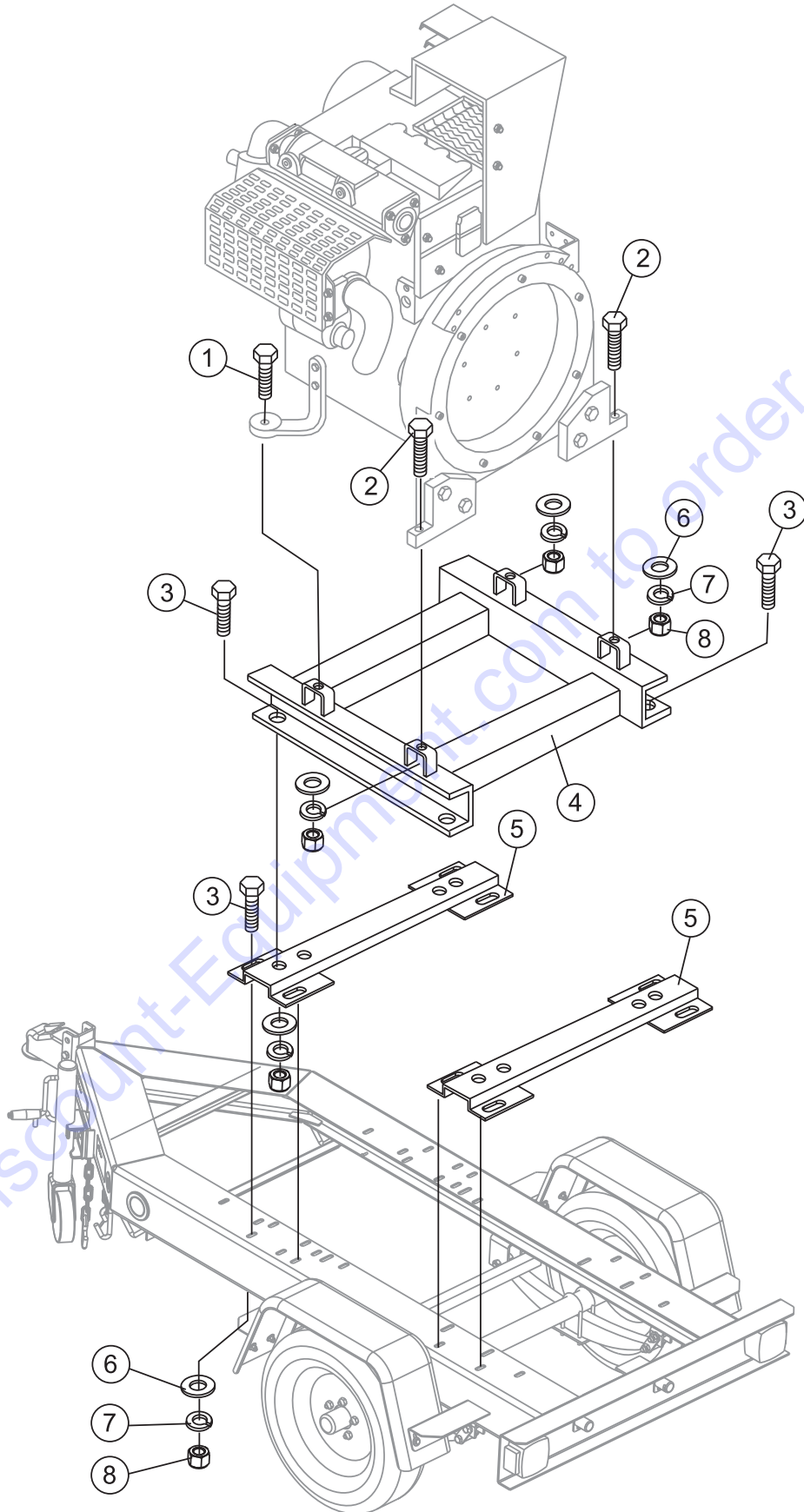


BATTERY ASSY. (SKID)

<u>NO.</u>	<u>PART NO.</u>	<u>PART NAME</u>	<u>QTY.</u>	<u>REMARKS</u>
1	6109100	BATTERY HOLD DOWN	1	
2	3019091	NUT	4	
3A	34597	POSITIVE BATTERY CABLE	1	
3B	34596	NEGATIVE BATTERY CABLE	1	
4	0165306531	BATTERY	1	
5	6109108	BOLT, BATTERY HOLD DOWN	2	

Go to Discount-Equipment.com to order your parts

ENGINE MOUNTING ASSY. (TRLRMPXF)

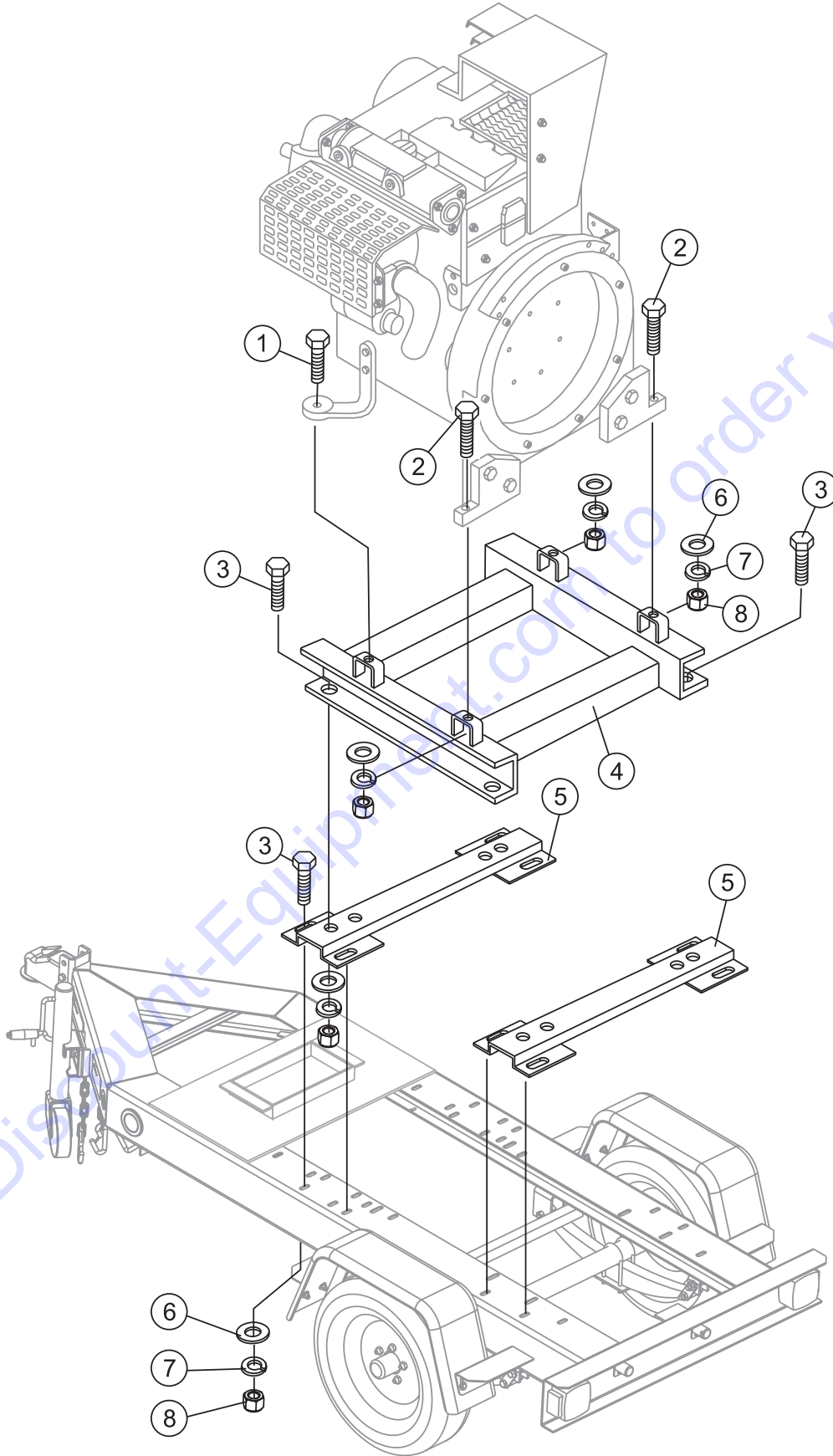


ENGINE MOUNTING ASSY. (TRLRMPXF)

<u>NO.</u>	<u>PART NO.</u>	<u>PART NAME</u>	<u>QTY.</u>	<u>REMARKS</u>
1	016212070	BOLT, 12X70	2	
2	34400	BOLT, HEX HEAD 12X100	2	
3	6109210	BOLT, HEX HEAD 1/2"-13X1-1/2	4	
4	XXX001	BRACKET, BASE	1	
5	XXX002	BRACKET, CHANNEL	2	
6	13211	WASHER, FLAT	12	
7	6109180	WASHER, LOCK 1/2	16	
8	0039312000	NUT, M12	16	

Go to Discount-Equipment.com to order your parts

ENGINE MOUNTING ASSY. (TRLR50XF)

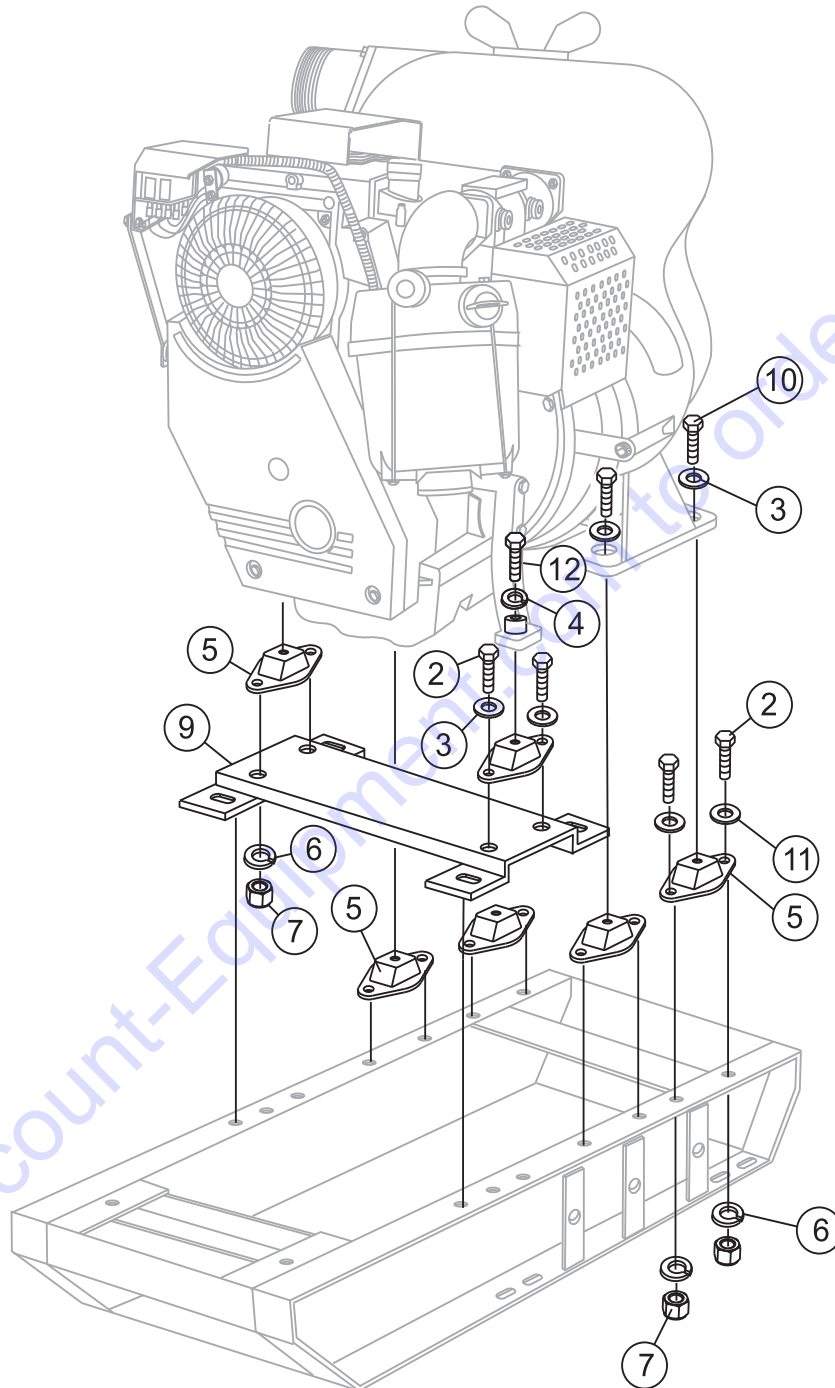


ENGINE MOUNTING ASSY. (TRLR50XF)

<u>NO.</u>	<u>PART NO.</u>	<u>PART NAME</u>	<u>QTY.</u>	<u>REMARKS</u>
1	016212070	BOLT, 12X70	2	
2	34400	BOLT, HEX HEAD 12X100	2	
3	6109210	BOLT, HEX HEAD 1/2"-13X1-1/2	4	
4	XXX001	BRACKET, BASE	1	
5	XXX002	BRACKET, CHANNEL	2	
6	13211	WASHER, FLAT	12	
7	6109180	WASHER, LOCK 1/2	16	
8	0039312000	NUT, M12	16	

Go to Discount-Equipment.com to order your parts

ENGINE MOUNTING ASSY. (SKID)

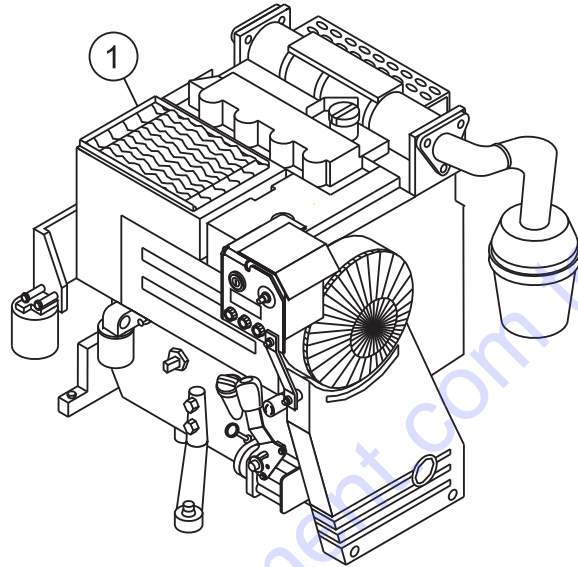


ENGINE MOUNTING ASSY. (SKID)

<u>NO.</u>	<u>PART NO.</u>	<u>PART NAME</u>	<u>QTY.</u>	<u>REMARKS</u>
2	2101030	10 x 30 HEX BOLT	12	
3	030216400	WASHER, LOCK	8	
4	6109180	WASHER, LOCK	2	
5	63541	SHOCK MOUNT	6	
6	030210250	WASHER, LOCK M10	12	
7	020310080	NUT M10	12	
9	60TDD008	PUMP AND ENGINE BASE BRACKET	1	
10	012216060	16 x 60 HEX BOLT	4	
11	13211	WASHER, FLAT	8	
12	016212070	12 x 70 FULL THREAD	2	

Go to Discount-Equipment.com to order your parts

ENGINE ASSY.



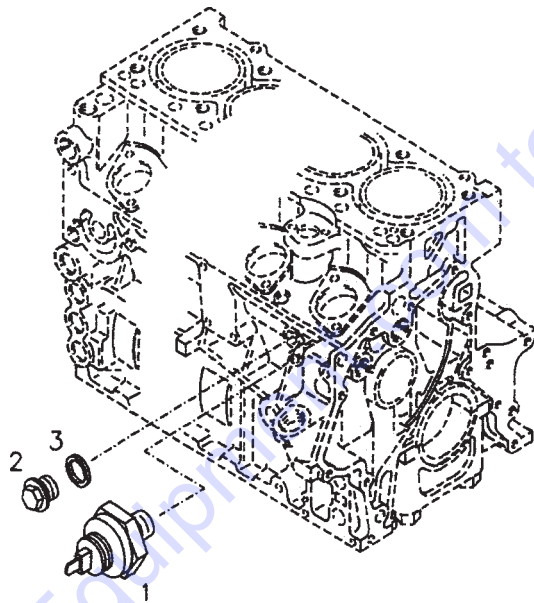
Go to Discount-Equipment.com to order your parts

ENGINE ASSY.

<u>NO.</u>	<u>PART NO.</u>	<u>PART NAME</u>	<u>QTY.</u>	<u>REMARKS</u>
1	F2L20116728	DEUTZ F2L2011 ENGINE	1	

Go to Discount-Equipment.com to order your parts

OIL PRESSURE SWITCH ASSY.

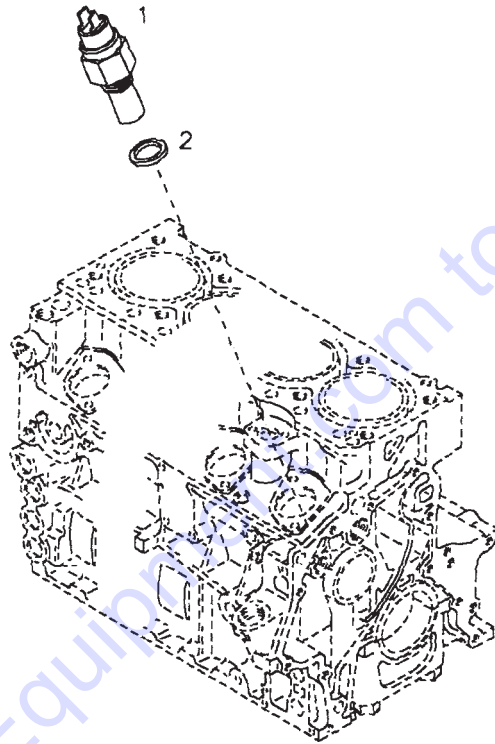


OIL PRESSURE SWITCH ASSY.

<u>NO.</u>	<u>PART NO.</u>	<u>PART NAME</u>	<u>QTY.</u>	<u>REMARKS</u>
1	1182484	OIL PRESSURE SWITCH	1	
2	01118971	SCREW PLUG	1	
3	01118718	SEALING RING	1	

Go to Discount-Equipment.com to order your parts

TEMPERATURE TRANSMITTER ASSY.



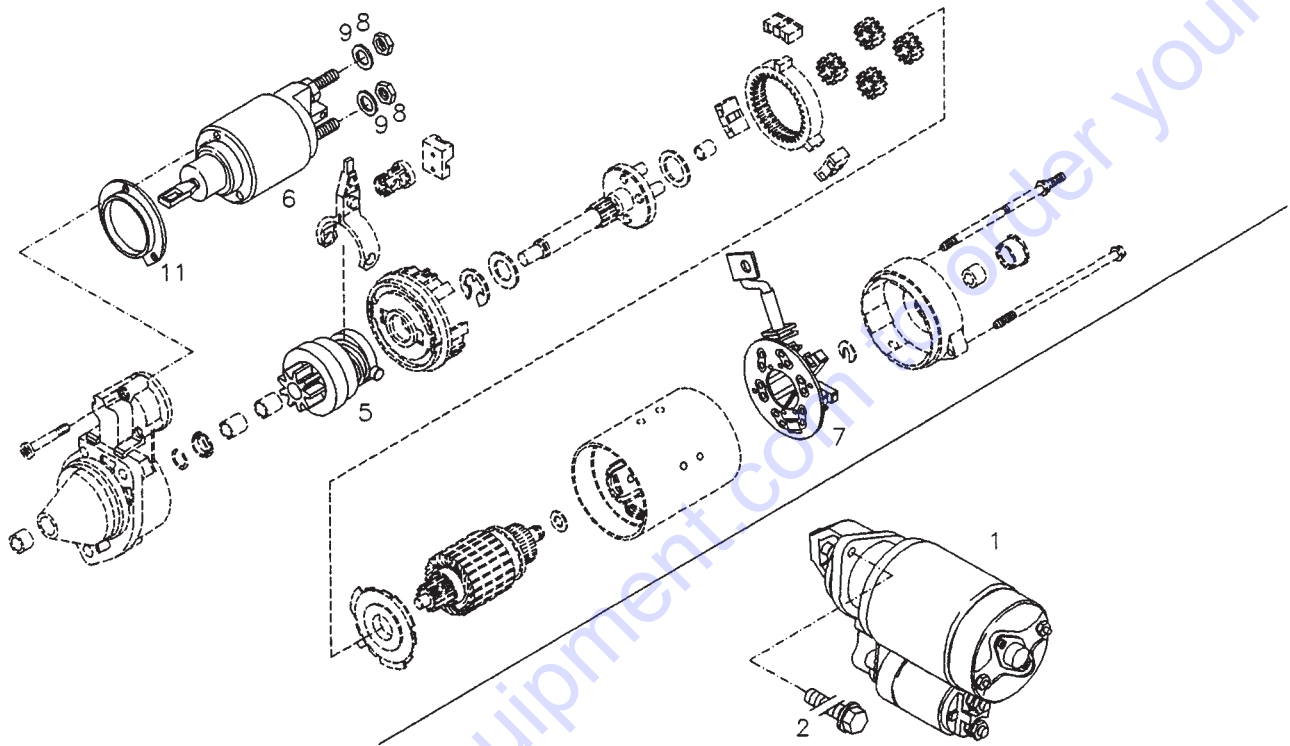
Go to Discount-Equipment.com to order your parts

TEMPERATURE TRANSMITTER ASSY.

<u>NO.</u>	<u>PART NO.</u>	<u>PART NAME</u>	<u>QTY.</u>	<u>REMARKS</u>
1	01182377	TEMPERATURE TRANSMITTER	1	INCLUDE ITEMS W/*
2*	01143531	SEALING RING	1	

Go to Discount-Equipment.com to order your parts

STARTER ASSY.

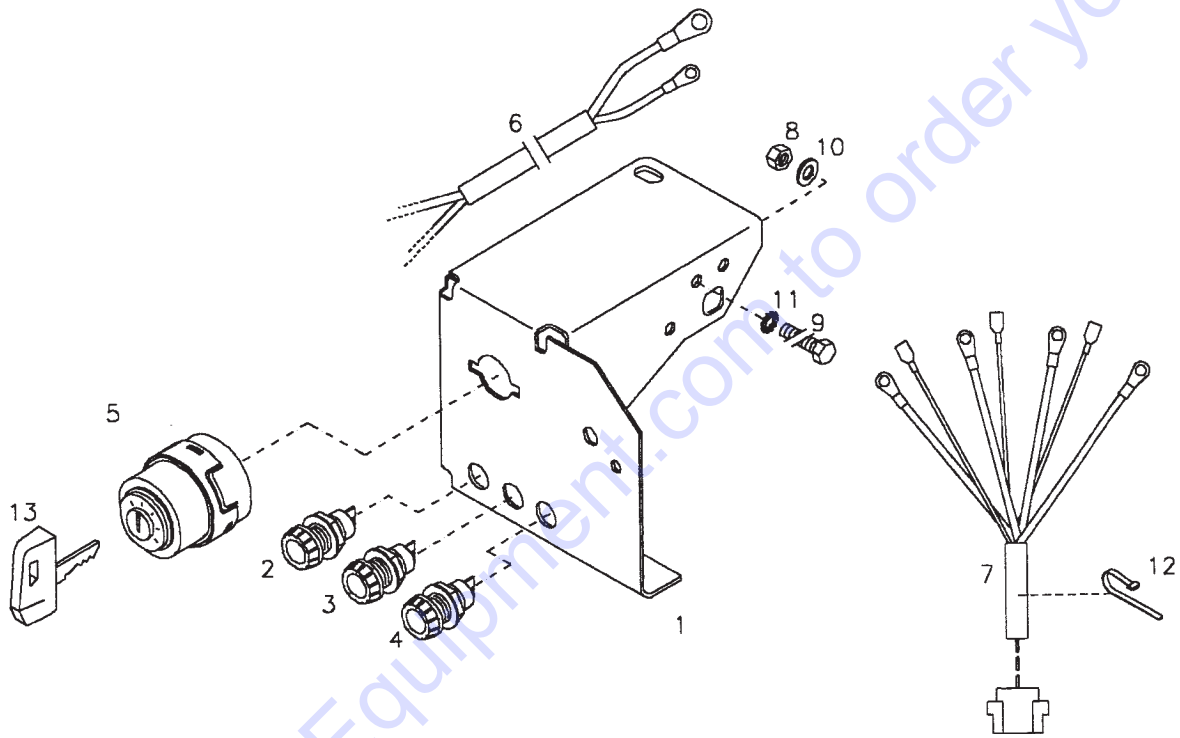


STARTER ASSY.

<u>NO.</u>	<u>PART NO.</u>	<u>PART NAME</u>	<u>QTY.</u>	<u>REMARKS</u>
1	01182384	STARTER	1	
2	01181390	HEXAGON BOLT	2	
5	01340070	STARTER PINION	1	
6	01319265	RELAY	1	
7	01319920	BRUSH HOLDER	1	
8	01318659	HEXAGON NUT	2	
9	01320257	WASHER, LOCK	2	
11	01319761	COVERING PLATE	1	

Go to Discount-Equipment.com to order your parts

CONTROL BOX ASSY. (OLD STYLE)



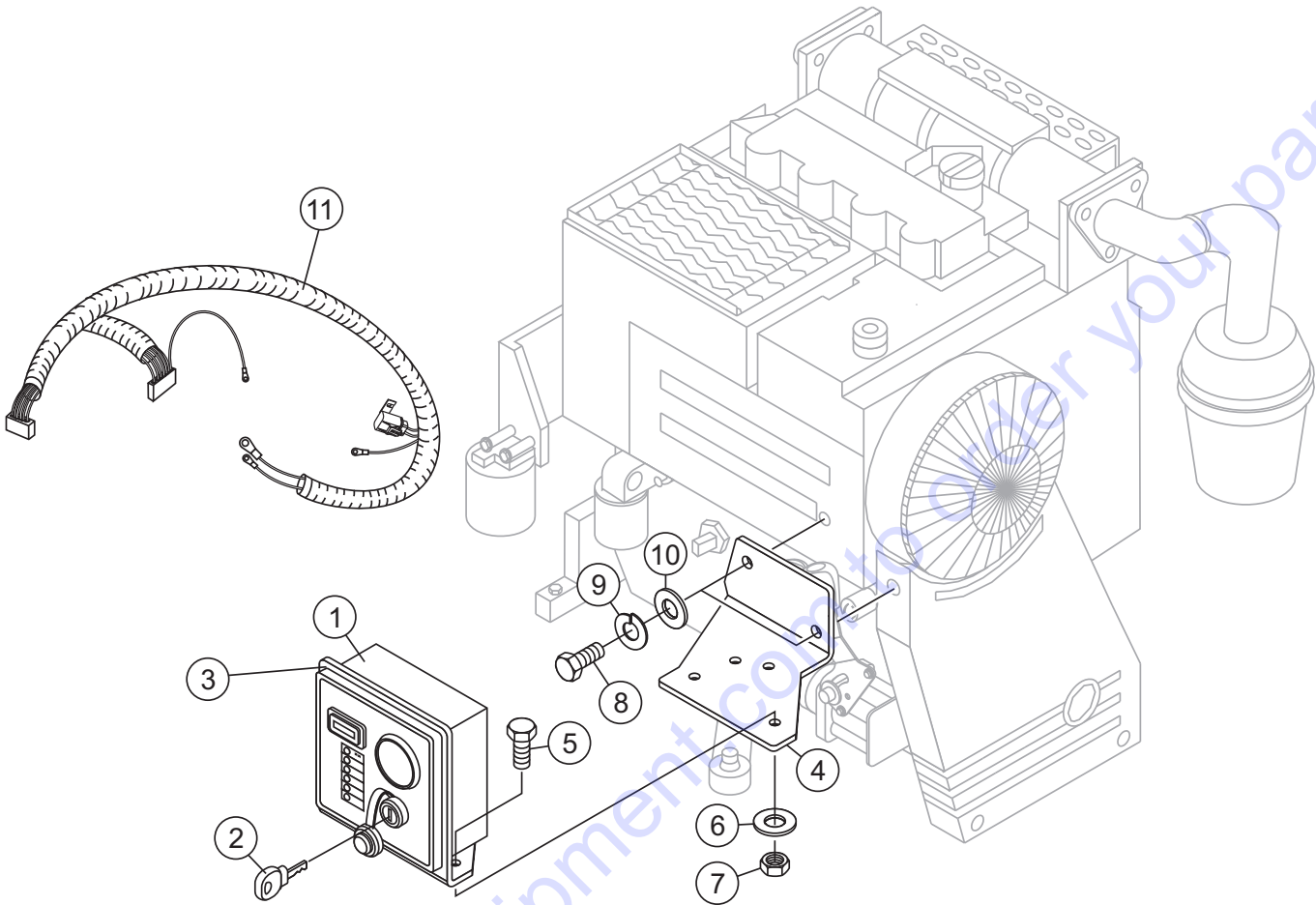
CONTROL BOX ASSY. (OLD STYLE)

<u>NO.</u>	<u>PART NO.</u>	<u>PART NAME</u>	<u>QTY.</u>	<u>REMARKS</u>
1		CONTROL BOX.....	1	INCLUDES ITEMS W/% — SEE NOTE BELOW
2%	01180384	SIGNAL LIGHT	1	
3%	01180382	SIGNAL LIGHT	1	
4%	01180383	SIGNAL LIGHT	1	
5%	01182528	PREHEAT STARTER SWITCH.....	1	INCLUDE ITEMS W/#
6%	04179738	CABLE HARNESS	1	
7%	04179735	CABLE HARNESS	1	
8%	01112802	HEXAGON NUT	1	
9%	01112195	HEXAGON BOLT	1	
10%	01140498	WASHER, FLAT	1	
11%	01117860	TOOTH LOCK WASHER	1	
12%	01180017	CLAMPING BAND	1	
13%#	01182529	IGNITION KEY	1	



OLD STYLE CONTROL BOX NO LONGER AVAILABLE.
 WHEN REPLACING CONTROL BOX, USE P/N 34708.
 SEE NEW STYLE CONTROL BOX ASSEMBLY NEXT
 PAGE.

CONTROL BOX ASSY. (NEW STYLE)

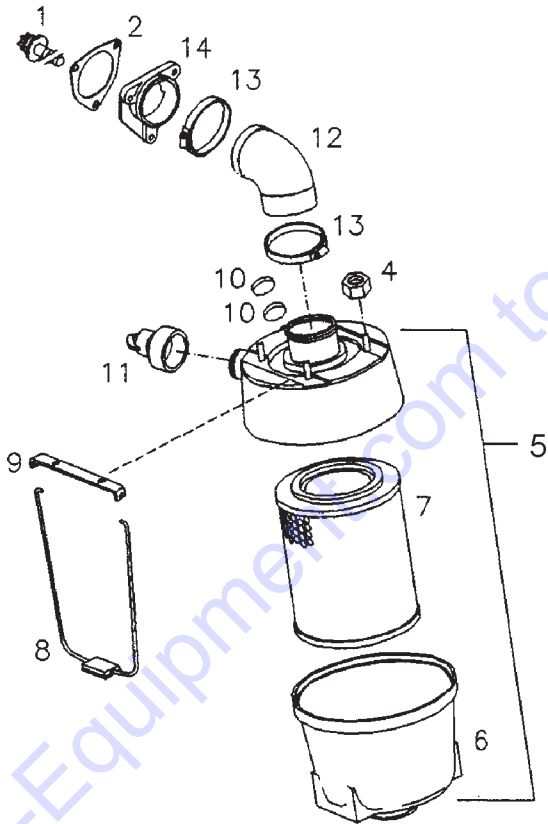


CONTROL BOX ASSY. (NEW STYLE)

<u>NO.</u>	<u>PART NO.</u>	<u>PART NAME</u>	<u>QTY.</u>	<u>REMARKS</u>
1	34708	CONTROL BOX	1	
2	EM98206	IGNITION KEY	1	
3	34709	CONTROL BOX BRACKET	1	
4	34707	ENGINE BRACKET	1	
5	XXXXXX	BOLT	3	
6	XXXXXX	WASHER	3	
7	XXXXXX	NUT	3	
8	XXXXXX	BOLT	2	
9	XXXXXX	LOCK WASHER	2	
10	XXXXXX	WASHER	2	
11	34710	HARNESS	1	

Go to Discount-Equipment.com to order your parts

AIR FILTER ASSY.



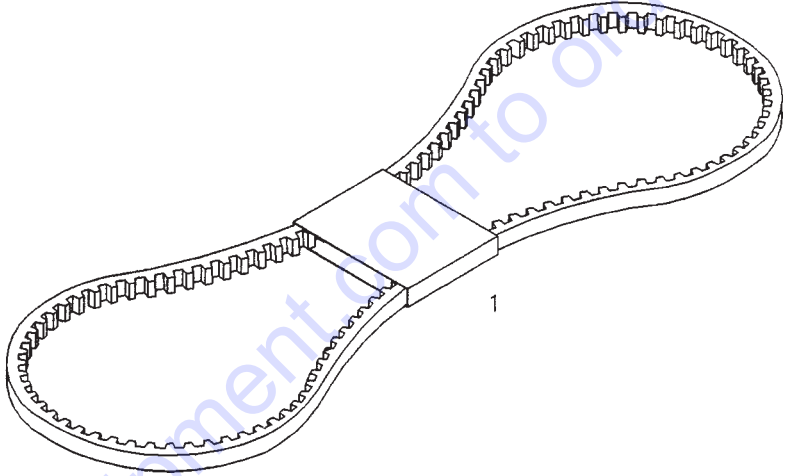
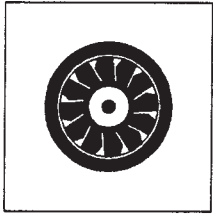
Go to Discount-Equipment.com to order your parts

AIR FILTER ASSY.

<u>NO.</u>	<u>PART NO.</u>	<u>PART NAME</u>	<u>QTY.</u>	<u>REMARKS</u>
1	01179428	TROX-HEAD BOLT	3	
2	04272299	GASKET	1	
4	01112824	HEXAGON NUT	4	
5	02169927	AIR CLEANER	1	INCLUDE ITEMS W/*
6*	02240281	HOOD	1	
7*	02339813	CARTRIDGE	1	
8*	02240283	CLAMPING YOKE	2	
9*	02240285	ANGLE PLATE	2	
10*	03363577	FELT WASHER	2	
11*	02165357	DUST EJECTOR	1	
12	04172501	INTAKE ELBOW	1	
13	01173940	HOSE CLIP	2	
14	04172837	HOSE NIPPLE	1	

Go to Discount-Equipment.com to order your parts

NARROW V-BELT ASSY.



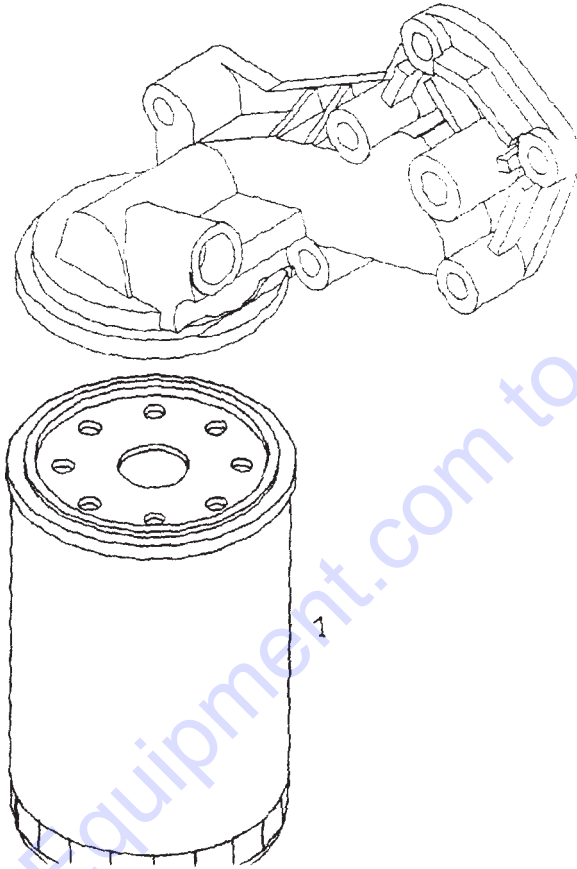
Go to Discount-Equipment.com to order your parts

NARROW V-BELT ASSY.

<u>NO.</u>	<u>PART NO.</u>	<u>PART NAME</u>	<u>QTY.</u>	<u>REMARKS</u>
1	01179565	NARROW V-BELT	1	

Go to Discount-Equipment.com to order your parts

LUBRICATED OIL FILTER ASSY.

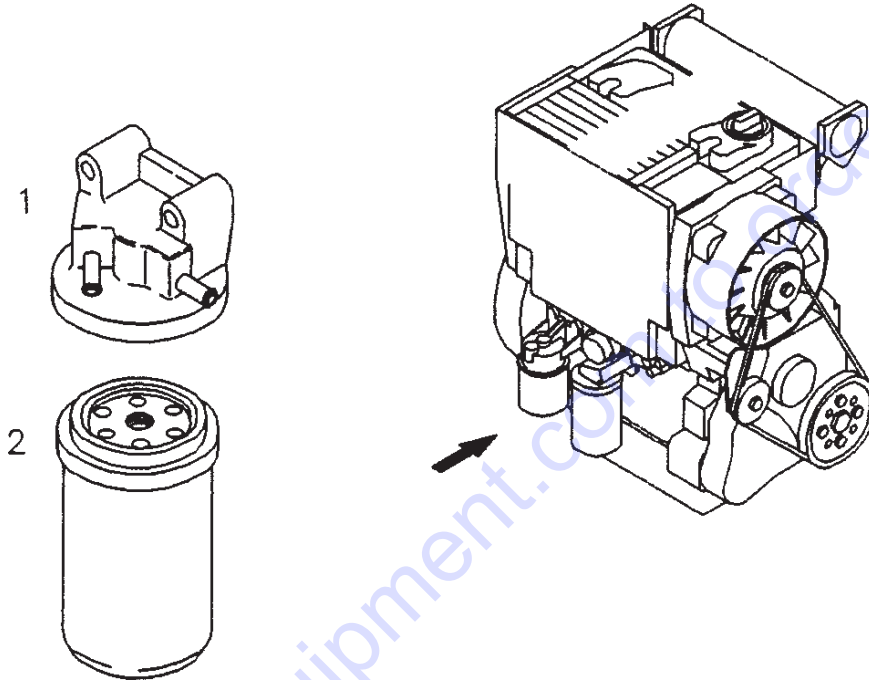


LUBRICATED OIL FILTER ASSY.

<u>NO.</u>	<u>PART NO.</u>	<u>PART NAME</u>	<u>QTY.</u>	<u>REMARKS</u>
1	01174416	SPIN-ON OIL FILTER	1	

Go to Discount-Equipment.com to order your parts

FUEL FILTER ASSY.



FUEL FILTER ASSY.

<u>NO.</u>	<u>PART NO.</u>	<u>PART NAME</u>	<u>QTY.</u>	<u>REMARKS</u>
1	04270708	BRACKET	1	
2	01174696	SPIN-ON FUEL FILTER	1	

Go to Discount-Equipment.com to order your parts

PARTS FINDER

**Search Website
by Part Number**



**Search Manual
Library For Parts
Manual & Lookup Part
Numbers – Purchase
or Request Quote**

Search Manuals

Enter your information to help us find the right parts manual for your machine.

* Brand:

* Model:

* Serial:

* Part Number:

SEARCH

**Can't Find Part or
Manual? Request Help
by Manufacturer,
Model & Description**

Parts Order Form

Please fill in the following information to help us find the right part for your machine.

Manufacturer:	<input type="text"/>
Model:	<input type="text"/>
Description:	<input type="text"/>
Part Number:	<input type="text"/>
Quantity:	<input type="text"/>
Notes:	<input type="text"/>

Submit

Discount-Equipment.com is your online resource for quality parts & equipment.

Florida: **561-964-4949** Outside Florida TOLL FREE: **877-690-3101**

Need parts?

Click on this link: <http://www.discount-equipment.com/category/5443-parts/> and choose one of the options to help get the right parts and equipment you are looking for. Please have the machine model and serial number available in order to help us get you the correct parts. If you don't find the part on the website or on one of the online manuals, please fill out the request form and one of our experienced staff members will get back to you with a quote for the right part that your machine needs.

We sell worldwide for the brands: Genie, Terex, JLG, MultiQuip, Mikasa, Essick, Whiteman, Mayco, Toro Stone, Diamond Products, Generac Magnum, Airman, Haulotte, Barreto, Power Blanket, Nifty Lift, Atlas Copco, Chicago Pneumatic, Allmand, Miller Curber, Skyjack, Lull, Skytrak, Tsurumi, Husquvarna Target, Stow, Wacker, Sakai, Mi-T-M, Sullair, Basic, Dynapac, MBW, Weber, Bartell, Bennar Newman, Haulotte, Ditch Runner, Menegotti, Morrison, Contec, Buddy, Crown, Edco, Wyco, Bomag, Laymor, EZ Trench, Bil-Jax, F.S. Curtis, Gehl Pavers, Heli, Honda, ICS/PowerGrit, IHI, Partner, Imer, Clipper, MMD, Koshin, Rice, CH&E, General Equipment, Amida, Coleman, NAC, Gradall, Square Shooter, Kent, Stanley, Tamco, Toku, Hatz, Kohler, Robin, Wisconsin, Northrock, Oztec, Toker TK, Rol-Air, APT, Wylie, Ingersoll Rand / Doosan, Innovatech, Con X, Ammann, Mecalac, Makinex, Smith Surface Prep, Small Line, Wanco, Yanmar