

# PARTS MANUAL



*Mikasa* SERIES  
**MODEL MRH800GS**

**Vibratory Roller**  
**(HONDA GX390K1SM32/GX390U1SM32/  
GX390UT2SM32/GX390UT2SCM1  
GASOLINE ENGINES)**

Revision #10 (06/11/20)



THIS MANUAL MUST ACCOMPANY THE EQUIPMENT AT ALL TIMES.

# PARTS FINDER

**Search Website  
by Part Number**



**Search Manual  
Library For Parts  
Manual & Lookup Part  
Numbers – Purchase  
or Request Quote**

**Search Manuals**

Enter your information to help us find the right parts manual for your machine.

\* Brand:

\* Model:

\* Serial:

\* Part Number:

SEARCH

**Can't Find Part or  
Manual? Request Help  
by Manufacturer,  
Model & Description**

**Parts Order Form**

Please fill in the following information to help us find the right part for your machine.

Manufacturer:	<input type="text"/>
Model:	<input type="text"/>
Description:	<input type="text"/>
Part Number:	<input type="text"/>
Quantity:	<input type="text"/>
Notes:	<input type="text"/>

Discount-Equipment.com is your online resource for quality parts & equipment.

Florida: **561-964-4949** Outside Florida TOLL FREE: **877-690-3101**

**Need parts?**

Click on this link: <http://www.discount-equipment.com/category/5443-parts/> and choose one of the options to help get the right parts and equipment you are looking for. Please have the machine model and serial number available in order to help us get you the correct parts. If you don't find the part on the website or on one of the online manuals, please fill out the request form and one of our experienced staff members will get back to you with a quote for the right part that your machine needs.

We sell worldwide for the brands: Genie, Terex, JLG, MultiQuip, Mikasa, Essick, Whiteman, Mayco, Toro Stone, Diamond Products, Generac Magnum, Airman, Haulotte, Barreto, Power Blanket, Nifty Lift, Atlas Copco, Chicago Pneumatic, Allmand, Miller Curber, Skyjack, Lull, Skytrak, Tsurumi, Husquvarna Target, Stow, Wacker, Sakai, Mi-T-M, Sullair, Basic, Dynapac, MBW, Weber, Bartell, Bennar Newman, Haulotte, Ditch Runner, Menegotti, Morrison, Contec, Buddy, Crown, Edco, Wyco, Bomag, Laymor, EZ Trench, Bil-Jax, F.S. Curtis, Gehl Pavers, Heli, Honda, ICS/PowerGrit, IHI, Partner, Imer, Clipper, MMD, Koshin, Rice, CH&E, General Equipment, Amida, Coleman, NAC, Gradall, Square Shooter, Kent, Stanley, Tamco, Toku, Hatz, Kohler, Robin, Wisconsin, Northrock, Oztec, Toker TK, Rol-Air, APT, Wylie, Ingersoll Rand / Doosan, Innovatech, Con X, Ammann, Mecalac, Makinex, Smith Surface Prep, Small Line, Wanco, Yanmar

# TABLE OF CONTENTS

## MRH800GS Vibratory Roller

Explanation Of Code In Remarks Column.....	4
Suggested Spare Parts .....	5

### Roller Component Drawings

Nameplate And Decals.....	6-9
Axle Assembly .....	10-11
Base Assembly.....	12-13
Front Guard Assembly.....	14-15
Side Cover Assembly .....	16-17
Water Tank Assembly .....	18-19
Hydraulic System Assembly .....	20-23
Hydraulic Oil Tank Assembly .....	24-25
Engine Assembly.....	26-29
Electric Device Assembly .....	30-31
Clutch (Vibration) Assembly .....	32-33
Vibrator Assembly .....	34-35
Upper Control Arm Assembly.....	36-37
Lower Control Arm Assembly.....	38-39

## Honda GX390 Series Engines

Cylinder Head Assembly .....	40-41
Cylinder Barrel Assembly .....	42-43
Crankcase Cover Assembly .....	44-45
Crankshaft Assembly.....	46-47
Piston Assembly .....	48-49
Camshaft Assembly.....	50-51
Recoil Starter Assembly .....	52-53
Fan Cover Assembly.....	54-55
Carburetor Assembly .....	56-59
Air Cleaner Assembly (Standard) .....	60-61
Air Cleaner Assembly (Cyclone).....	62-63
Muffler Assembly .....	64-65
Fuel Tank Assembly.....	66-67
Flywheel Assembly.....	68-69
Ignition Coil Assembly .....	70-71
Starter Motor Assembly.....	72-73
Control Assembly .....	74-75
Control Box Assembly .....	76-77
Label Assembly .....	78-79

### NOTICE

Specifications and part numbers are subject to change without notice.

# EXPLANATION OF CODE IN REMARKS COLUMN

The following section explains the different symbols and remarks used in the Parts section of this manual. Use the help numbers found on the back page of the manual if there are any questions.

**NOTICE**

The contents and part numbers listed in the parts section are subject to change **without notice**. Multiquip does not guarantee the availability of the parts listed.

## SAMPLE PARTS LIST

NO.	PART NO.	PART NAME	QTY.	REMARKS
1	12345	BOLT .....	1	INCLUDES ITEMS W/%
2%		WASHER, 1/4 IN. ....		NOT SOLD SEPARATELY
2%	12347	WASHER, 3/8 IN. ...	1	MQ-45T ONLY
3	12348	HOSE .....	A/R	MAKE LOCALLY
4	12349	BEARING .....	1	S/N 2345B AND ABOVE

## NO. Column

**Unique Symbols** — All items with same unique symbol (@, #, +, %, or >) in the number column belong to the same assembly or kit, which is indicated by a note in the “Remarks” column.

**Duplicate Item Numbers** — Duplicate numbers indicate multiple part numbers, which are in effect for the same general item, such as different size saw blade guards in use or a part that has been updated on newer versions of the same machine.

**NOTICE**

When ordering a part that has more than one item number listed, check the remarks column for help in determining the proper part to order.

## PART NO. Column

**Numbers Used** — Part numbers can be indicated by a number, a blank entry, or TBD.

TBD (To Be Determined) is generally used to show a part that has not been assigned a formal part number at the time of publication.

A blank entry generally indicates that the item is not sold separately or is not sold by Multiquip. Other entries will be clarified in the “Remarks” Column.

## QTY. Column

**Numbers Used** — Item quantity can be indicated by a number, a blank entry, or A/R.

A/R (As Required) is generally used for hoses or other parts that are sold in bulk and cut to length.

A blank entry generally indicates that the item is not sold separately. Other entries will be clarified in the “Remarks” Column.

## REMARKS Column

Some of the most common notes found in the “Remarks” Column are listed below. Other additional notes needed to describe the item can also be shown.

**Assembly/Kit** — All items on the parts list with the same unique symbol will be included when this item is purchased.

Indicated by:

“INCLUDES ITEMS W/(unique symbol)”

**Serial Number Break** — Used to list an effective serial number range where a particular part is used.

Indicated by:

“S/N XXXXX AND BELOW”

“S/N XXXX AND ABOVE”

“S/N XXXX TO S/N XXX”

**Specific Model Number Use** — Indicates that the part is used only with the specific model number or model number variant listed. It can also be used to show a part is NOT used on a specific model or model number variant.

Indicated by:

“XXXXX ONLY”

“NOT USED ON XXXX”

**“Make/Obtain Locally”** — Indicates that the part can be purchased at any hardware shop or made out of available items. Examples include battery cables, shims, and certain washers and nuts.

**“Not Sold Separately”** — Indicates that an item cannot be purchased as a separate item and is either part of an assembly/kit that can be purchased, or is not available for sale through Multiquip.

## SUGGESTED SPARE PARTS

### MRH800GS VIBRATORY ROLLER

1 to 3 units

Qty.	P/N	Description
1	954404893	FILTER, WATER TANK
2	954001380	ELEMENT, HYDRAULIC OIL
2	070503000	V-BELT, ENGINE
1	956100024	THROTTLE WIRE
1	954300342	CAP, WATER TANK
1	955200030	HEAD LAMP ASSY.
2	070100381	V-BELT, VIBRATOR ASSY.

#### NOTICE

Part numbers on this Suggested Spare Parts list may supersede/replace the part numbers shown in the following parts lists.

### HONDA GX390K1SM32/GX390U1SM32/ GX390UT2SM32/ GX390UT2SCM ENGINES

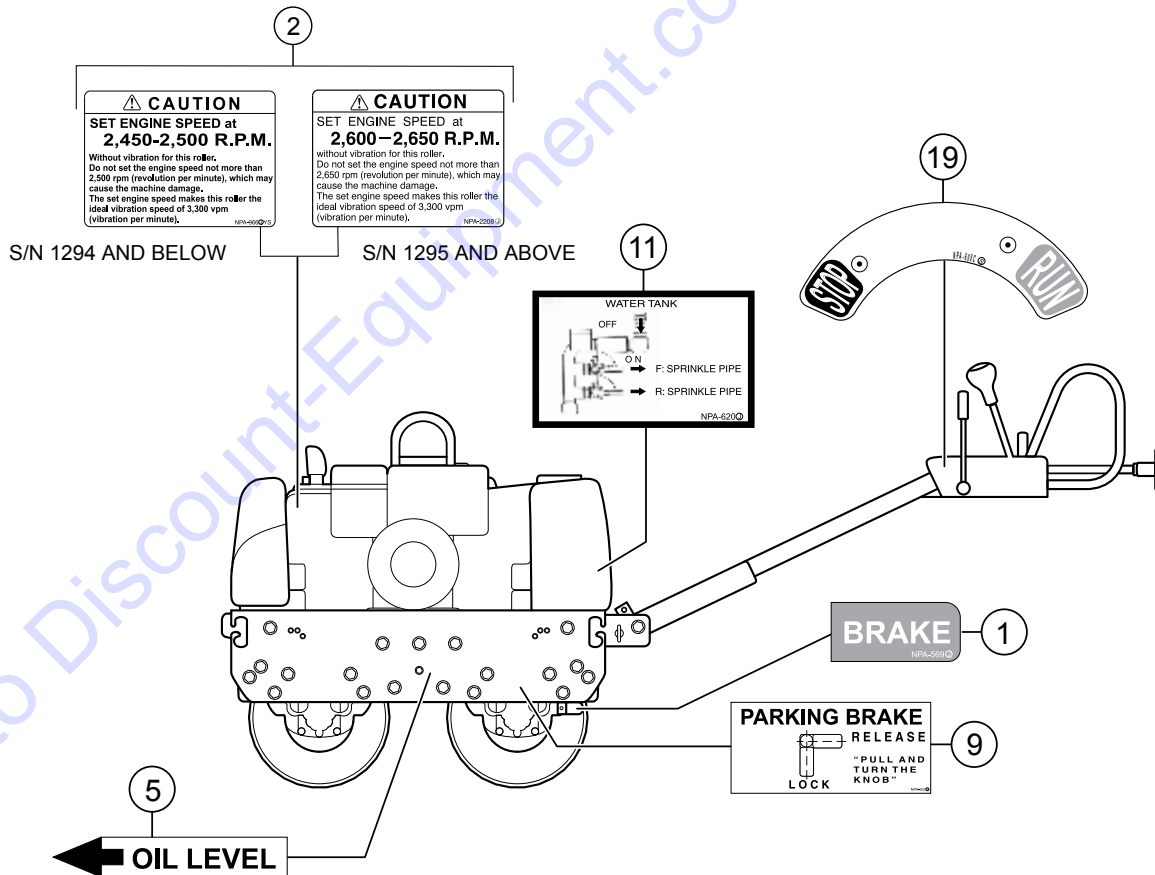
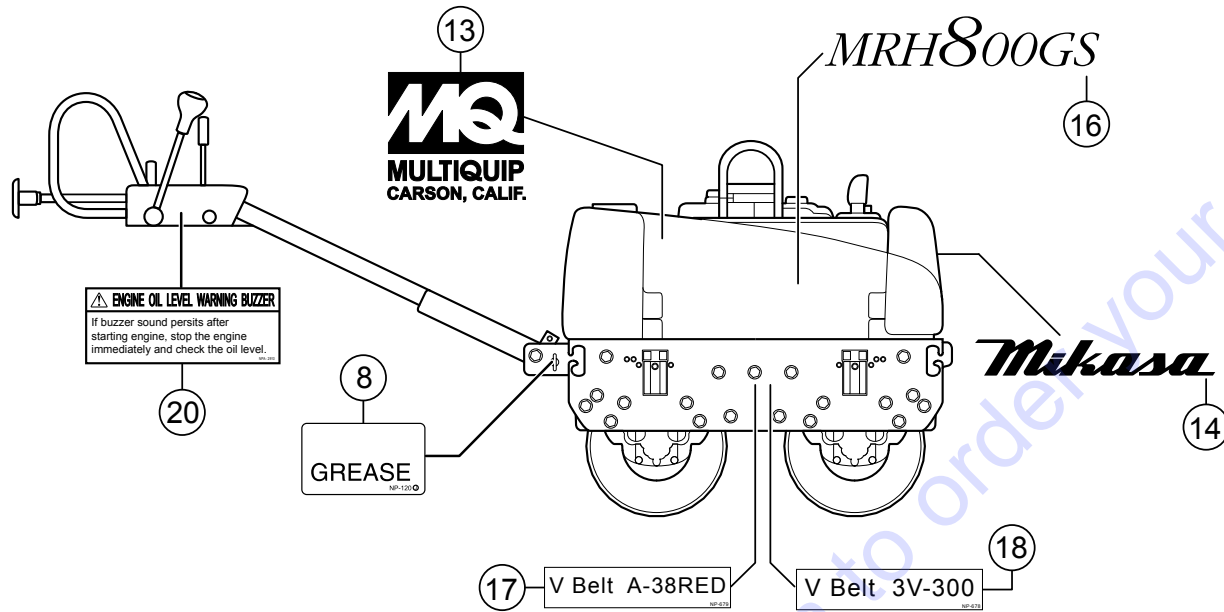
1 to 3 units

Qty.	P/N	Description
3	9807956846	SPARK PLUG, NKG, BPR6ES
3	0650140480	SPARK PLUG, NKG, BPR6ES
3	17210ZE3505	ELEMENT, AIR CLEANER
3	17210Z1C781	ELEMENT, AIR CLEANER
3	17218ZE3505	FILTER OUTER, FOAM
3	17218Z1C780	FILTER OUTER, FOAM
1	17620ZH7023	CAP, FUEL TANK
1	17620Z4H030	CAP, FUEL TANK
1	17620Z4H900	CAP, FUEL TANK
1	17672ZE2W01	FUEL FILTER
1	17672Z4H000	FUEL FILTER
1	34150ZH7003	ALERT UNIT, OIL

#### NOTICE

- ◇ Honda GX390K1SM32
- ♣ Honda GX390U1SM32
- ❖ Honda GX390UT2SM32
- ◆ Honda GX390UT2SCM1

# NAMEPLATE AND DECALS

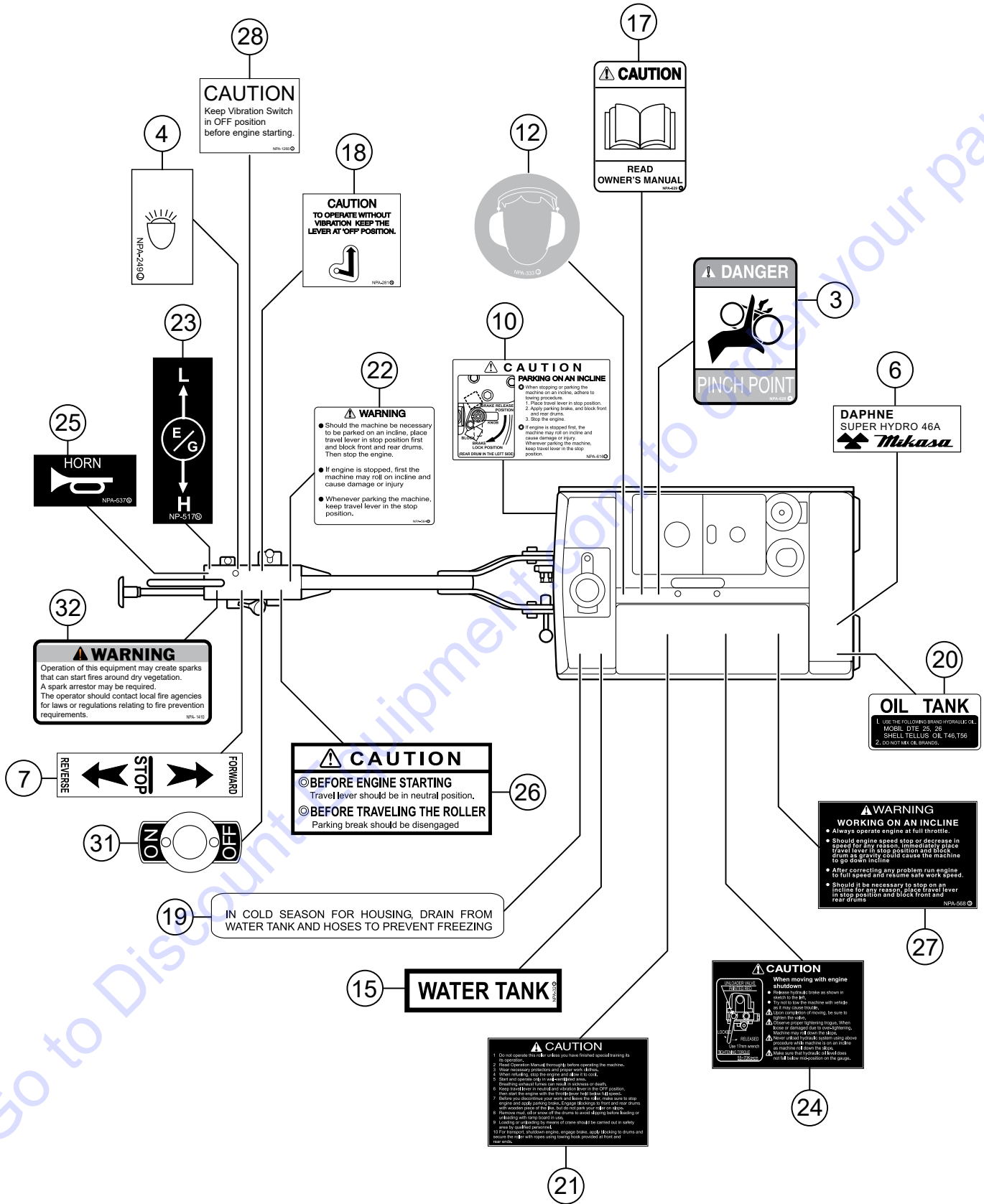


## NAMEPLATE AND DECALS

<u>NO.</u>	<u>PART NO.</u>	<u>PART NAME</u>	<u>QTY.</u>	<u>REMARKS</u>
1	920205690	DECAL, BRAKE LEVER.....	1.....	NPA-569
2	920209660	DECAL, CAUTION - ENG. SPEED, NPA-966 ....	1.....	S/N D1294 AND BELOW
2	920222080	DECAL, CAUTION - ENG. SPEED, NPA-2208 ..	1.....	S/N D1295 AND ABOVE
5	920101480	DECAL, CHECK OIL LEVEL .....	1.....	NP-148
8	920100120	DECAL, GREASE POINT, NP-120 .....	1.....	REPLACES P/N 920101200
9	920208070	DECAL, PARKING BREAK .....	1.....	NPA-807
11	920206200	DECAL, WATER TANK SPRINKLE PIPE .....	1.....	NPA-620
13	920201910	DECAL, MULTIQUIP - CARSON .....	1.....	NPA-191
14	920101510	DECAL, MIKASA .....	1.....	NP-151
16	920207610	DECAL, MRH-800GS .....	1.....	NPA-761
17	920106790	DECAL, V-BELT (A-38RED).....	1.....	NP-679
18	920106780	DECAL, V-BELT (3V-300) .....	1.....	NP-678
19	920206080	DECAL, STOP-RUN .....	1.....	NPA-608
20	920202910	DECAL, BUZZER, ENGINE OIL LEVEL.....	1.....	NPA-291



# NAMEPLATE AND DECALS (CONT'D.)

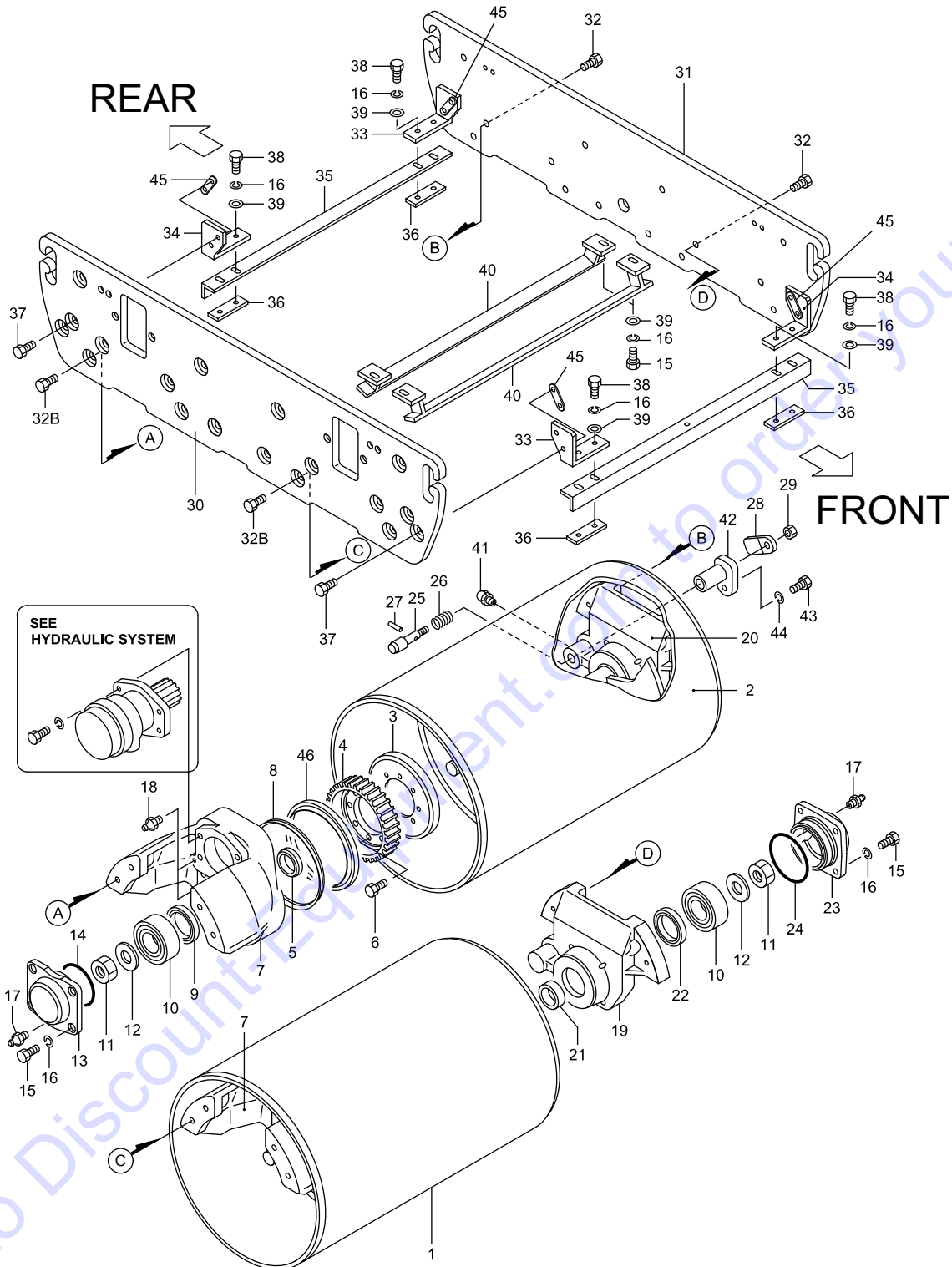




## NAMEPLATE AND DECALS (CONT'D.)

<u>NO.</u>	<u>PART NO.</u>	<u>PART NAME</u>	<u>QTY.</u>	<u>REMARKS</u>
3	920206280	DECAL, DANGER - PINCH POINT .....	1.....	NPA-628
4	920102490	DECAL, LIGHT SWITCH .....	1.....	NP-249
6	920207480	DECAL, SHELL TELLIS OIL .....	1.....	
7	920108070	DECAL, FORWARD/REVERSE LEVER .....	1.....	NP-807
10	920206160	DECAL, CAUTION - INCLINE PARKING .....	1.....	NPA-616
12	920203330	DECAL, HEARING PROTECTION .....	1.....	NPA-333
15	920200320	DECAL, WATER TANK .....	1.....	NPA-32
17	920206290	DECAL, CAUTION - OWNERS MANUAL .....	1.....	NPA-629
18	920212600	DECAL, CAUTION - SWITCH ON/OFF VIB .....	1.....	NPA-281
19	920104280	DECAL, FREEZING PREVENTION .....	1.....	NP-428
20	920213000	DECAL, OIL TANK .....	1.....	NPA-1300
21	920202870	DECAL, CAUTION - GENERAL, NPA-287 .....	1.....	REPLACES P/N 920207870
22	920205640	DECAL, WARNING - INCLINE PARKING .....	1.....	NPA-564
23	920105170	DECAL, THROTTLE .....	1.....	NP-517
24	920202860	DECAL, CAUTION - MOVING PLT. NPA-286.....	1.....	REPLACES P/N 920207860
25	920201450	DECAL, HORN .....	1.....	NPA-145
26	920202920	DECAL, CAUTION - BRAKE .....	1.....	NPA-292
27	920205680	DECAL, WARNING - INCLINE PLT., NPA-568...	1.....	REPLACES P/N 920207880
28	920106760	DECAL, STOP-RUN-START .....	1.....	NP-676
31	920205080	DECAL, ON-OFF .....	1.....	NPA-508
32	920214100	DECAL, E/G FIRE WARNING .....	1.....	NPA-1410

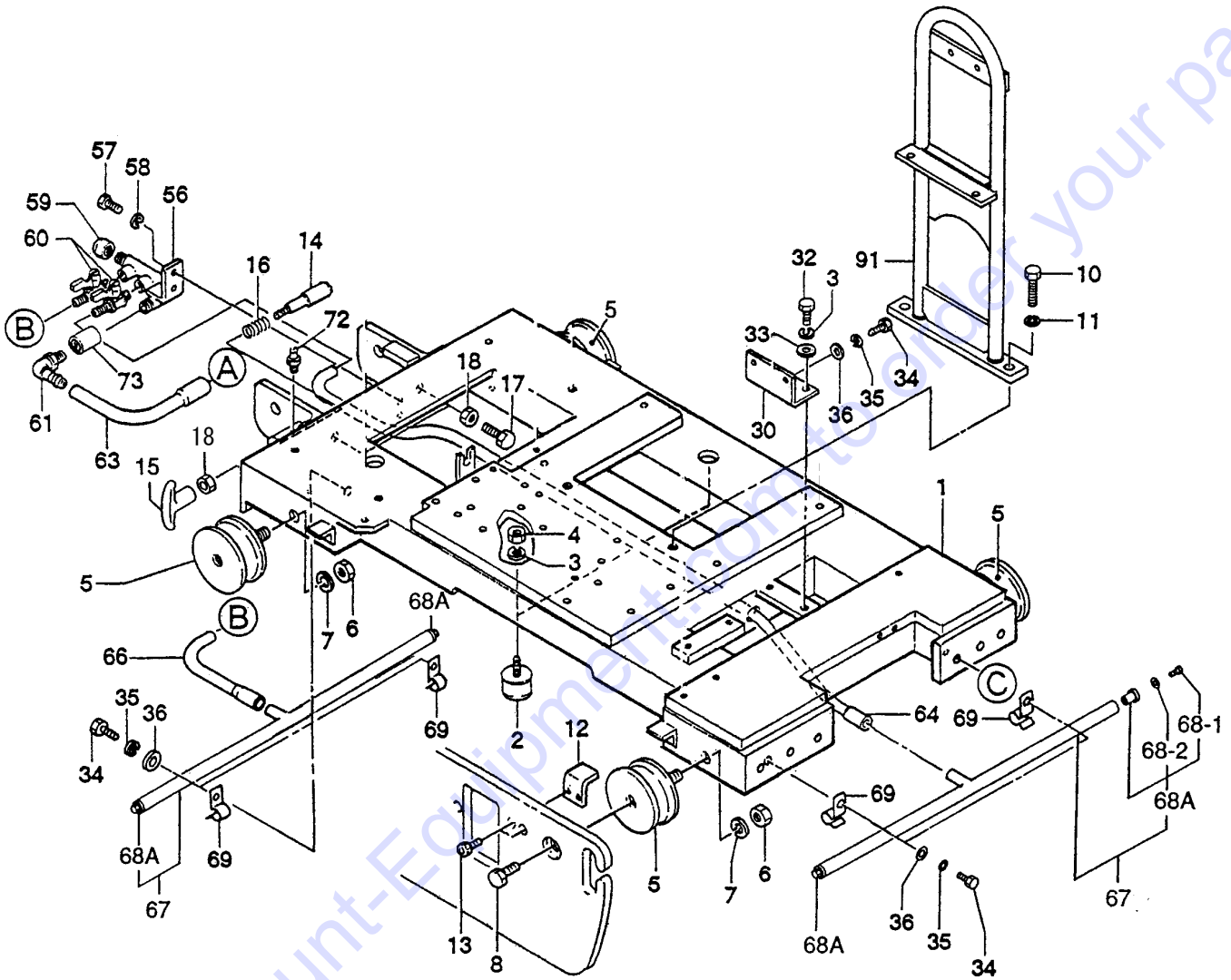
# AXLE ASSY.



# AXLE ASSY.

<u>NO.</u>	<u>PART NO.</u>	<u>PART NAME</u>	<u>QTY.</u>	<u>REMARKS</u>
1	515119290	DRUM	1	
2	515119300	DRUM	1	
3	515346670	GEAR PLATE	2	
4	515334000	GEAR (39)	2	
5	509429660	COLLAR 405510	2	
6	012210035	BOLT 10X35 .....	16	REPLACES P/N 001221035
7	515118960	DRUM BRACKET (R)	2	
8	515460540	V-RING V-200L	2	
9	060605020	OIL SEAL	2	
10	047110030	BEARING	4	
11	020130240	NUT M30	4	
12	031130450	WASHER M30	4	
13	515334010	BEARING COVER (R)	2	
14	050100850	O-RING	2	
15	0105091025	BOLT 10X25 .....	20	REPLACES P/N 001221025
16	030210250	WASHER M10	28	
17	505015060	GREASE FITTING .....	4	REPLACES P/N 301010100
18	171010120	GREASE FITTING	4	
19	515113000	DRUM BRACKET (L)	1	
20	515113014	DRUM BRACKET (LB)	1	
21	506425670	COLLAR 405520	2	
22	060705010	OIL SEAL	2	
23	515334040	BEARING COVER (L)	2	
24	050300950	O-RING	2	
25	515446960	LOCK PIN, BRAKE	1	
26	515446950	SPRING, BRAKE	1	
27	025405025	SPRING PIN 5X25	1	
28	515446970	KNOB, BRAKE	1	
29	020310080	NUT M10.....	1	REPLACES P/N 020410060
30	515117040	SIDE PLATE (R)	1	
31	515114350	SIDE PLATE (L)	1	
32	012214030	BOLT 14X30 .....	8	REPLACES P/N 001221430
32B	001121630	BOLT 16X30	8	
33	515341930	BRACKET (A), SCRAPER	2	
34	515341940	BRACKET (B), SCRAPER	2	
35	515334020	SCRAPER (OUT)	2	
36	515447510	MOUNT NUT, SCRAPER	4	
37	001121435	BOLT 14X35	8	
38	012010030	BOLT 10X30 .....	8	REPLACES P/N 001221030
39	031110160	WASHER M10	12	
40	515334030	SCRAPER (IN)	2	
41	959010330	GREASE FITTING	1	
42	515340410	SOCKET(BRAKE)	1	
43	0105091025	BOLT 10X25 .....	1	REPLACES P/N 001221025
44	030210250	WASHER, LOCK M10	1	
45	515455840	MOUNT NUT	4	
46	069960530	DUST SEAL	2	

# BASE ASSY.

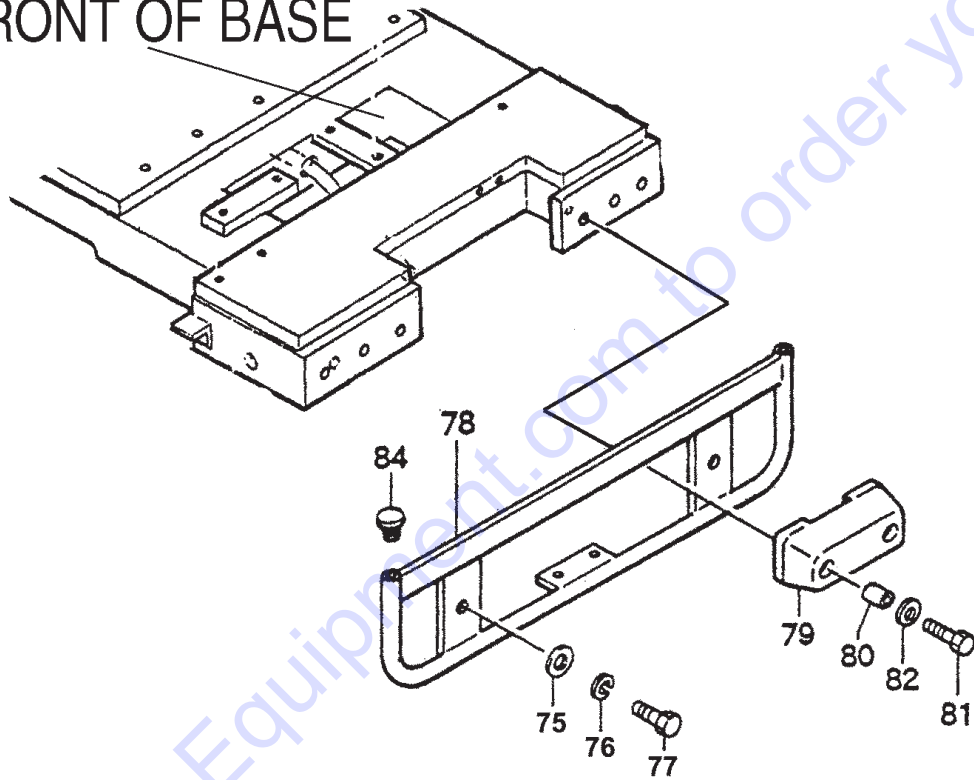


# BASE ASSY.

<u>NO.</u>	<u>PART NO.</u>	<u>PART NAME</u>	<u>QTY.</u>	<u>REMARKS</u>
1	515119150	BASE	1	
2	939010010	SHOCK ABSORBER, STOPPER 45	2	
3	030210250	WASHER, LOCK M10	9	
4	020310080	NUT M10	3	
5	930710031	SHOCK ABSORBER	4	
6	020316130	NUT M16	4	
7	030216400	WASHER, LOCK M16	4	
8	001221625	BOLT 16X25	4	
10	001221440	BOLT 14X40	2	
11	030214350	WASHER, LOCK M14	2	
12	515447010	SAFETY GUARD	4	
13	096208010	SOCKET HEAD BOLT 8X15 .....	8.....	REPLACES P/N 001520815
14	517459710	HANDLE STOPPER	1	
15	959007140	T- KNOB (M12)	1	
16	517459700	SPRING/HANDLE	1	
17	012012030	BOLT 12X30 .....	2.....	REPLACES P/N 001221230
18	0039312000	NUT M12.....	3.....	REPLACES P/N 020312100
30	515334100	STAY, COVER (F)	1	
32	012210020	BOLT 10X20 .....	5.....	REPLACES P/N 001221020
33	031110160	WASHER, FLAT M10	7	
34	0105050616	BOLT 6X15 .....	8.....	REPLACES P/N 001220615
35	030206150	WASHER, LOCK M6	8	
36	952404470	WASHER, FLAT M6.....	8.....	REPLACES P/N 031106100
56	515334050	SUPPORT, WATER COCK	1	
57	014208020	BOLT 8X20 .....	2.....	REPLACES P/N 001220820
58	030208200	WASHER, LOCK M8	2	
59	509010010	CAP 3/8	1	
60	954403241	COCK PT1/4	2	
61	954405660	ELBOW 3/8X12	1	
63	515446980	WATER HOSE (T-V) 300L	1	
64	515446990	WATER HOSE (F) 1200L	1	
66	515447470	WATER HOSE (R) 260L	1	
67	515910040	SPRINKLING PIPE ASSY. MRH.....	2.....	INCLUDES ITEMS W/\$
68A\$	515910050	CAP ASSY., W/BOLT, WASHER .....	4.....	INCLUDES ITEMS W/#
68-1#	011206020	BOLT 6X20 .....	4.....	REPLACES P/N 001220620
68-2#	952404470	WASHER, FLAT M6.....	4.....	REPLACES P/N 031106100
69	515449900	CLAMP	4	
72	351010050	GREASE FITTING, 6X1	1	
73	954001590	SOCKET PT 3/8-3/8	1	
91	515213600	HOOK	1	

# FRONT GUARD ASSY.

FRONT OF BASE



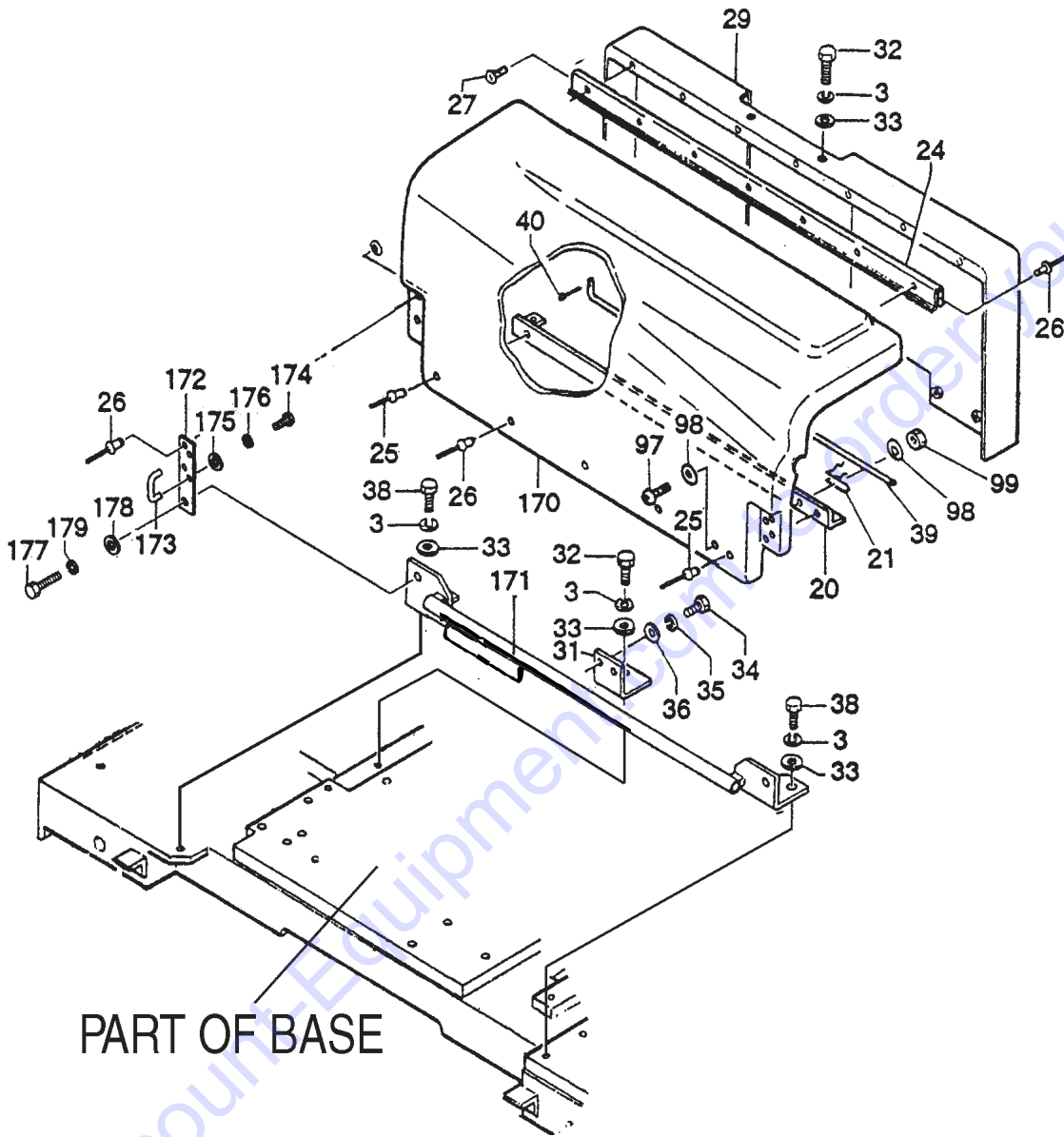
## FRONT GUARD ASSY.

<u>NO.</u>	<u>PART NO.</u>	<u>PART NAME</u>	<u>QTY.</u>	<u>REMARKS</u>
75	031110160	FLAT WASHER, M10	2	
76	030210250	LOCK WASHER, M10	2	
77	012210035	BOLT 10X35MM.....	2.....	REPLACES P/N 001221035
78	515336200	FRONT GUARD	1	
79	515336210	BUMPER	2	
80	515449720	SPACER, BUMPER	4	
81	012210040	BOLT 10X40 .....	4.....	REPLACES P/N 001221040
82	031110160	WASHER, FLAT M10	4	
84	953405940	PIPE INSERT	2	

Go to Discount-Equipment.com to order your parts



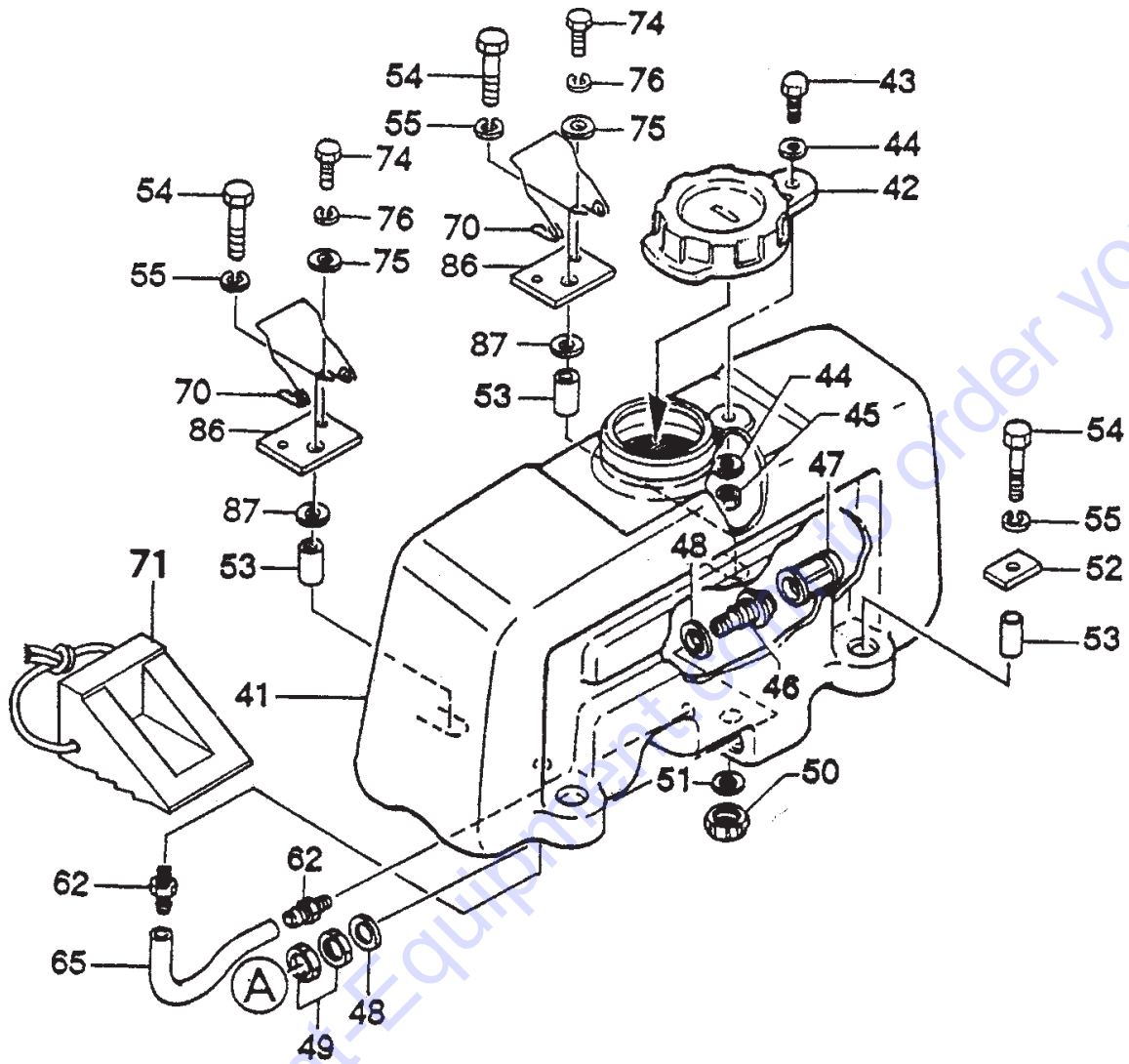
# SIDE COVER ASSY.



## SIDE COVER ASSY.

<u>NO.</u>	<u>PART NO.</u>	<u>PART NAME</u>	<u>QTY.</u>	<u>REMARKS</u>
3	030210250	WASHER, LOCK M10	9	
20	515336250	SUPPORT, COVER	1	
21	515449890	ROD HOLDER	1	
24	515334600	RUBBER HINGE	1	
25	515010090	RIVET	2	
26	515010100	RIVET	14	
27	092004008	SCREW 4X8	7	
29	515113900	COVER	1	
31	515447030	STAY, COVER (R)	1	
32	012210020	BOLT 10X20 .....	5	REPLACES P/N 001221020
33	031110160	WASHER, FLAT M10	7	
34	0105050616	BOLT 6X15 .....	8	REPLACES P/N 001220615
35	030206150	WASHER, LOCK M6	8	
36	952404470	WASHER, FLAT M6 .....	8	REPLACES P/N 031106100
38	0105091025	BOLT 10X25 .....	2	REPLACES P/N 001221025
39	515447380	ROD, COVER	1	
40	025910060	SNAP PIN	1	
97	001000401	SCREW 4X16 .....	1	REPLACES P/N 091004016
98	58042	WASHER, FLAT M4 .....	2	REPLACES P/N 031104080
99	0030004000	NUT M4 .....	1	REPLACES P/N 020304030
170	515910100	COVER ASSY.	1	
171	515213870	STAY, COVER (EXP)	1	
172	515450780	HANDLE BRACKET	2	
173	515450790	HANDLE (COVER)	2	
174	0010004016	SCREW 4X15 .....	4	REPLACES P/N 091004015
175	58042	WASHER, FLAT M4 .....	4	REPLACES P/N 031104080
176	030204100	WASHER, LOCK M4	4	
177	011008015	BOLT 8X15 .....	2	REPLACES P/N 001220815
178	0401450080	WASHER, FLAT M8 .....	2	REPLACES P/N 031108160
179	030208200	WASHER, LOCK M8	2	

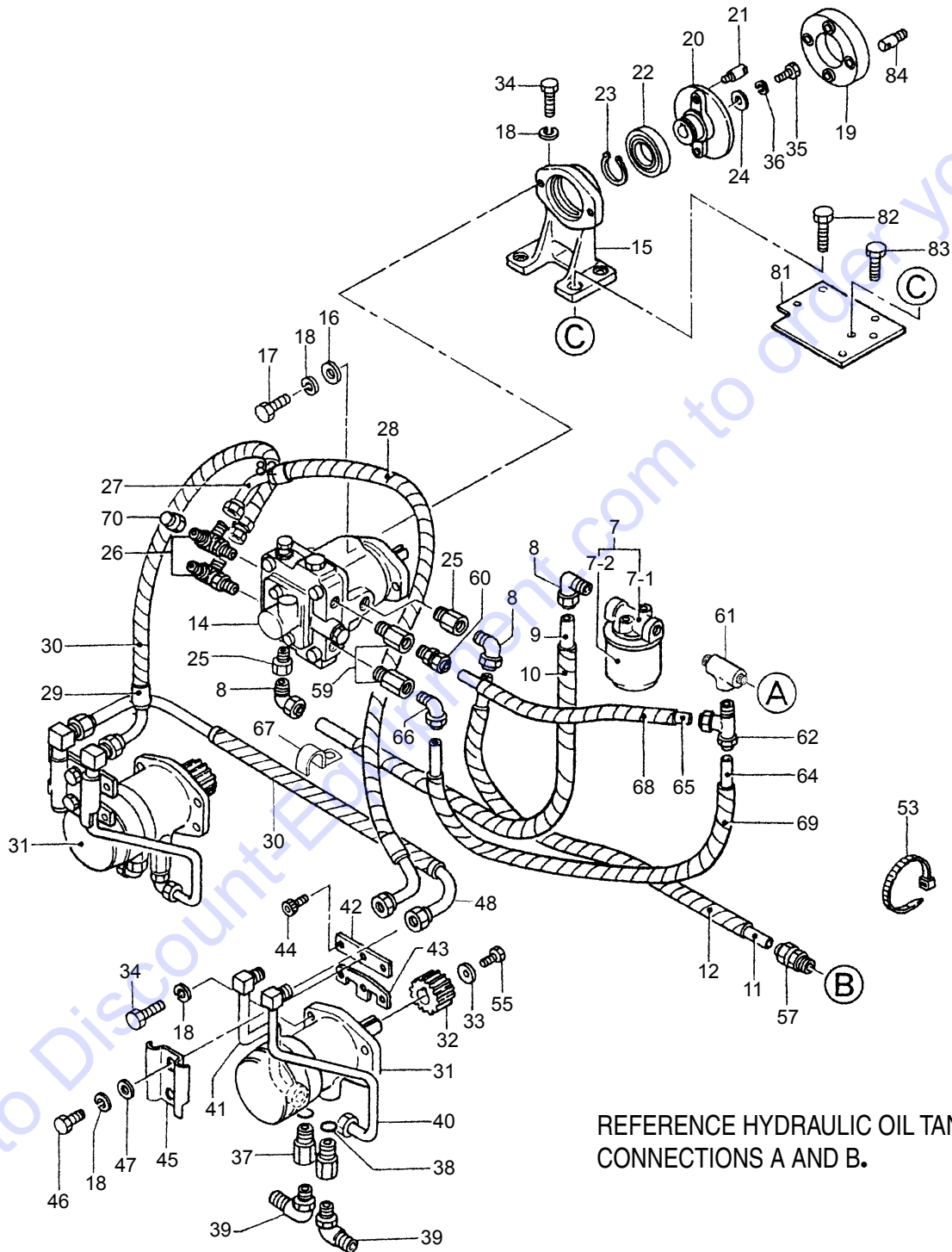
# WATER TANK ASSY.



## WATER TANK ASSY.

<u>NO.</u>	<u>PART NO.</u>	<u>PART NAME</u>	<u>QTY.</u>	<u>REMARKS</u>
41	515119400	WATER TANK 10.3 GAL./39 LITERS	1	
42	954300342	CAP, WATER TANK	1	
43	001241030	BOLT 10X30	1	
44	033910010	WASHER	2	
45	022910180	NYLON NUT M10	1	
46	954404910	HOSE JOINT	1	
47	954404893	FILTER, TANK	1	
48	953404900	PACKING	2	
49	959404880	NUT 3/4"	2	
50	506403990	CAP	2	
51	953404000	PACKING, CAP	1	
52	506434680	STOPPER, FRONT	2	
53	506434690	SPACER, WATER TANK	4	
54	001221253	BOLT 12X65	4	
55	030212300	WASHER, LOCK M12	4	
62	954405680	CONNECTOR 1/4X10	2	
65	516454950	WATER HOSE	1	
70	515449870	HOLDER, STOPPER	2	
71	517338540	STOPPER	2	
74	011006010	BOLT 6X10 .....	4.....	REPLACES P/N 001220610
75	952404470	WASHER, FLAT M6 .....	4.....	REPLACES P/N 031106100
76	030206150	WASHER, LOCK M6	4	
86	515449880	HOLDER (R)	2	
87	952405950	WASHER	2	

# HYDRAULIC SYSTEM ASSY.

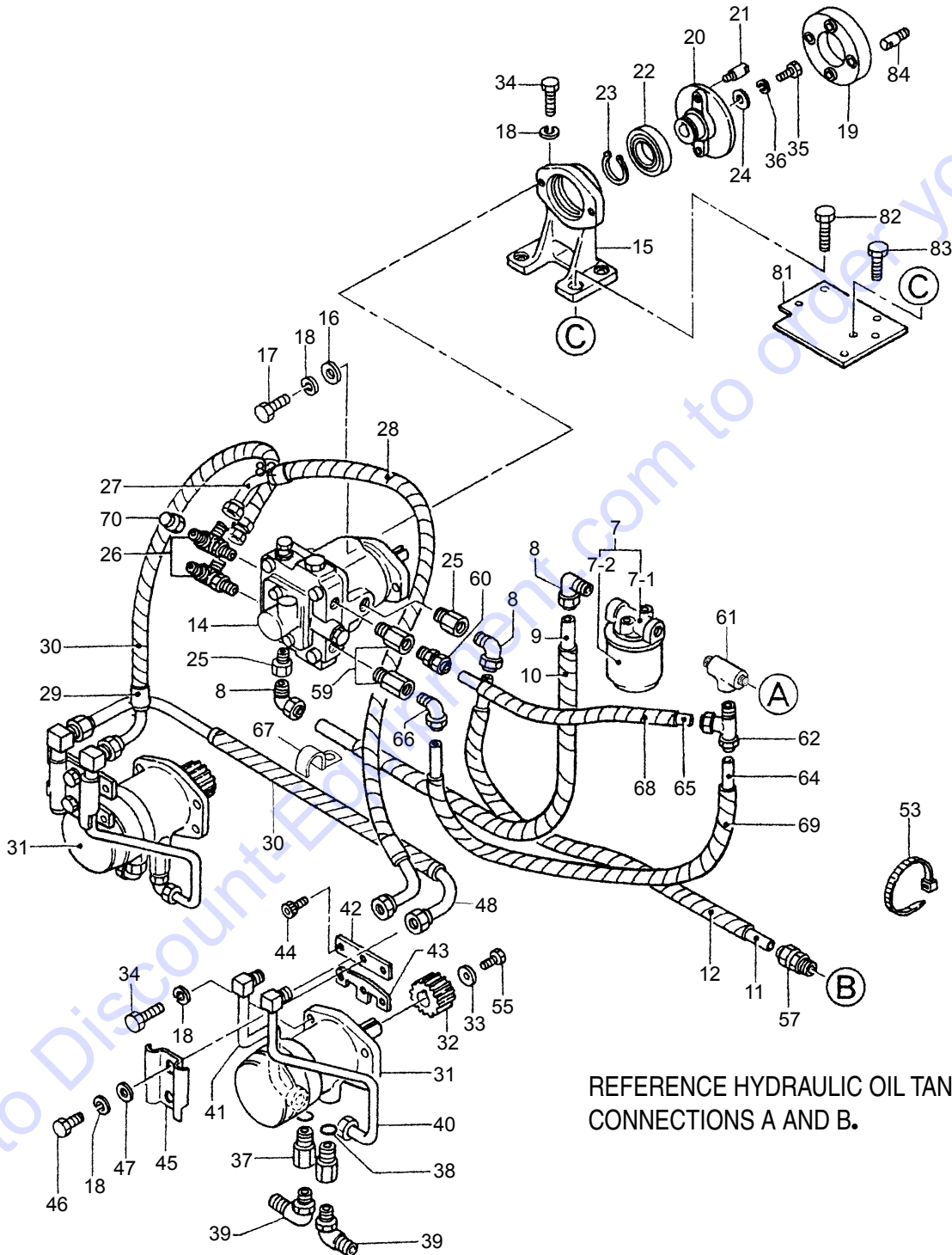


REFERENCE HYDRAULIC OIL TANK ASSY. FOR CONNECTIONS A AND B.

## HYDRAULIC SYSTEM ASSY.

<u>NO.</u>	<u>PART NO.</u>	<u>PART NAME</u>	<u>QTY.</u>	<u>REMARKS</u>
7	954001350	OIL FILTER .....	1	INCLUDES ITEMS W/#
7-1#	954001390	FILTER HEAD	1	
7-2#	954001380	ELEMENT, HYDRAULIC OIL	1	
8	954001530	ELBOW LIN-1/2-PT3/8	3	
9	954002310	TUBE 9.6-12.7-325L	1	
10	959020014	SPIRAL TUBE 12D-350L	1	
11	954001511	TUBE 9.6-12.7-360	1	
12	959020014	SPIRAL TUBE 12-500L	1	
14	515010110	OIL PUMP	1	
15	515114390	BRACKET	1	
16	952404110	COLLAR	2	
17	012210035	BOLT 10X35 .....	2	REPLACES P/N 001221035
18	030210250	WASHER, LOCK M10	22	
19	515334070	COUPLING	1	
20	515334080	FLANGE	1	
21	515447020	COUPLING PIN	2	
22	046006009	BEARING	1	
23	080200450	STOP RING	1	
24	952400450	WASHER	1	
25	954001460	BUSHING 3/8"	2	
26	954001850	ELBOW 3/8-1/4X2	2	
27	954001830	OIL HOSE ML90-ML90X560 BS	1	
28	959020013	SPIRAL TUBE 11D-600L	1	
29	954001840	OIL HOSE ML90-1005X600 BS	1	
30	955404270	SPIRAL TUBE/11D-700L	2	
31	515348100	OIL MOTOR	2	
32	515454330	GEAR, PINION 12	2	
33	952400130	WASHER	2	
34	012210035	BOLT 10X35 .....	14	REPLACES P/N 001221035
35	0105050616	BOLT 6X15 .....	1	REPLACES P/N 001220615
36	030206150	WASHER, LOCK M6	1	
37	515447130	JOINT 1/2-3/8-31	4	
38	050210180	O-RING	4	
39	512010120	JOINT, LLM-UE-10X3/8-B	4	
40	515447110	PIPE, OM-A-E	2	
41	515447120	PIPE, OM-B-E	2	
42	515447160	HOLDER, UPPER	2	
43	515447170	HOLDER, LOWER	2	
44	014208020	SOCKET HEAD BOLT 8X20 .....	8	REPLACES P/N 001520820
45	515447140	COVER, PIPE	2	
46	012210020	BOLT 10X20 .....	4	REPLACES P/N 001221020
47	031110160	WASHER, FLAT M10	8	
48	954002630	OIL HOSE ML90-700BS	1	

# HYDRAULIC SYSTEM ASSY. (CONT'D.)



REFERENCE HYDRAULIC OIL TANK ASSY. FOR CONNECTIONS A AND B.

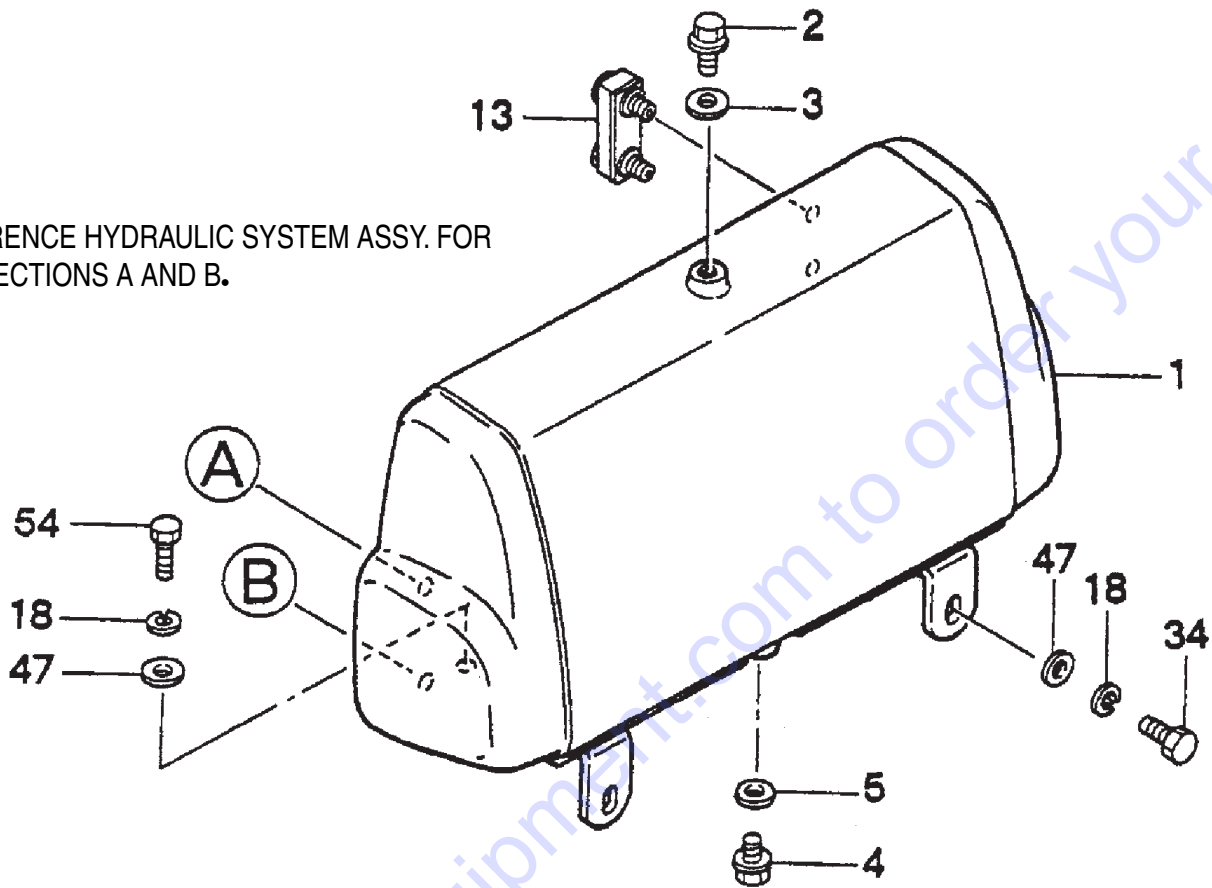


## HYDRAULIC SYSTEM ASSY. (CONT'D.)

<u>NO.</u>	<u>PART NO.</u>	<u>PART NAME</u>	<u>QTY.</u>	<u>REMARKS</u>
53	507010110	CLAMP	8	
55	014208020	BOLT 8X20 .....	2	REPLACES P/N 001220820
57	954001520	ADAPTER CIN-1/2" XPT 3/8"	1	
59	515335300	CHECK VALVE 7/16"	2	
60	954001090	ADAPTER CIN-3/8"-PT1/4"	1	
61	954002660	3/8" TEE JOINT	1	
62	954001620	FITTING, TEE STIN 3/8"-PT 3/8"	1	
64	954090004	TUBE 9.5-7-405L	1	
65	954090005	TUBE 9.5-7-305L	1	
66	954001100	ELBOW LIN-3/8-PT1/4"	1	
67	454010020	CLAMP	12	
68	959021810	SPIRAL TUBE 6D-350L	1	
69	959021810	SPIRAL TUBE 6D-510L	1	
70	954001040	CAP PF1/4"	2	
81	515335451	SPACER	1	
82	012210040	BOLT 10X40 .....	4	REPLACES P/N 001221040
83	012010030	BOLT 10X30 .....	2	REPLACES P/N 001221030
84	515447020	COUPLING PIN	2	

# HYDRAULIC OIL TANK ASSY.

REFERENCE HYDRAULIC SYSTEM ASSY. FOR CONNECTIONS A AND B.

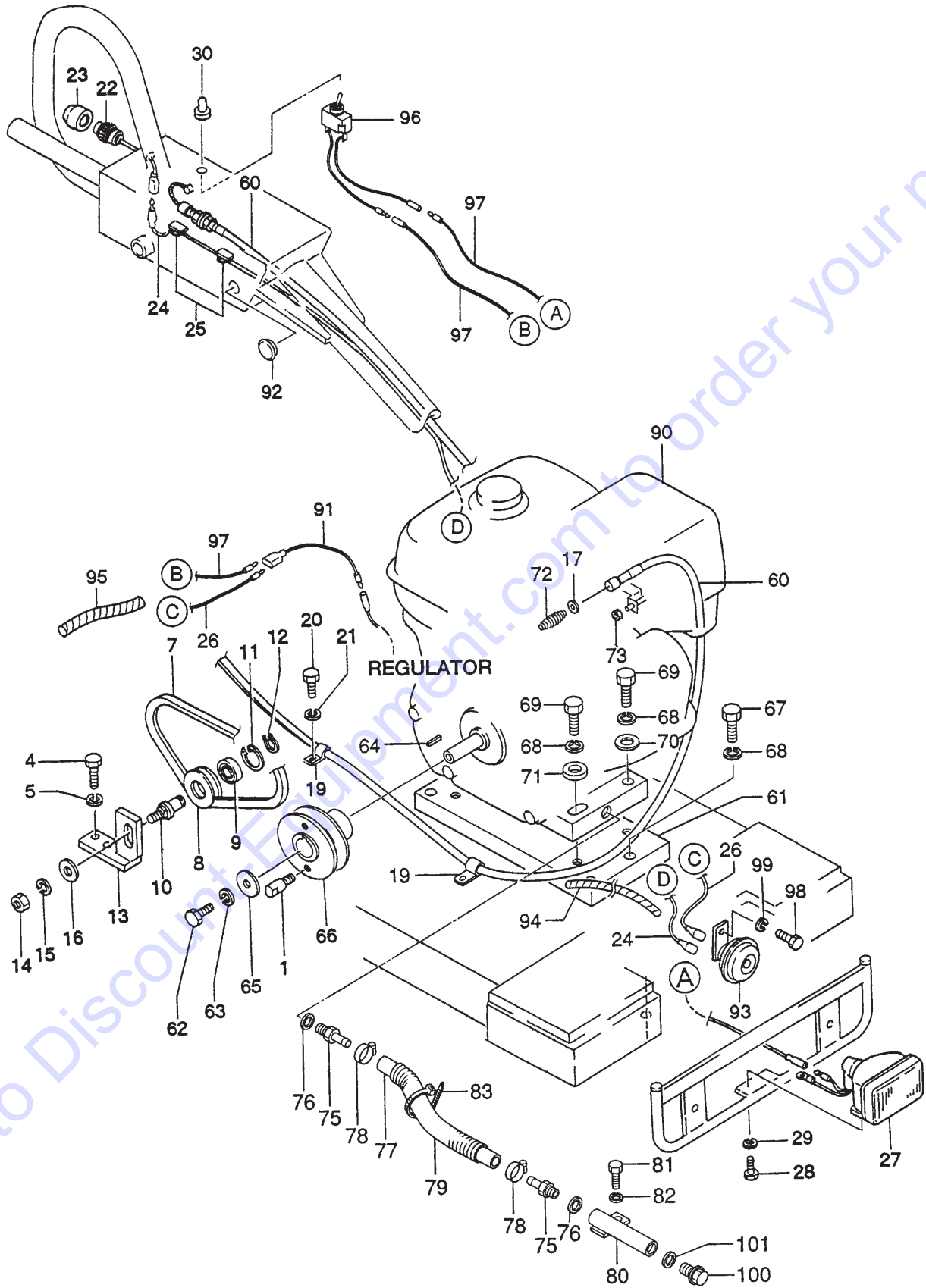


## HYDRAULIC OIL TANK ASSY.

<u>NO.</u>	<u>PART NO.</u>	<u>PART NAME</u>	<u>QTY.</u>	<u>REMARKS</u>
1	515118050	OIL TANK	1	
2	953405840	DRAIN PLUG M18	1	
3	953402930	COPPER PACKING	1	
4	953400270	PLUG 1/4X14	1	
5	953405260	PACKING 1/4	1	
13	955407500	OIL GAUGE	1	
18	030210250	WASHER, LOCK M10	22	
34	012210035	BOLT 10X35 .....	14.....	REPLACES P/N 001221035
47	031110160	WASHER, FLAT M10	8	
54	0105091025	BOLT 10X25 .....	2.....	REPLACES P/N 001221025

Go to Discount-Equipment.com to order your parts

# ENGINE ASSY.



# ENGINE ASSY.

<u>NO.</u>	<u>PART NO.</u>	<u>PART NAME</u>	<u>QTY.</u>	<u>REMARKS</u>
1	515447020	COUPLING PIN	2	
4	012010030	BOLT 10X30.....	2	REPLACES P/N 001221030
5	030210250	WASHER, LOCK M10	2	
7	070503000	V-BELT, 3V-300	1	
8	515447050	TIGHTENER PULLEY	1	
9	046006004	BEARING	1	
10	515447060	SHAFT TIGHTENER	1	
11	080100420	STOP RING	1	
12	080200200	STOP RING	1	
13	515334180	HOLDER, TIGHTENER	1	
14	020314110	NUT M14	1	
15	030214350	WASHER, LOCK M14	1	
16	031114260	WASHER, FLAT M14	1	
17	58042	WASHER, FLAT M4.....	1	REPLACES P/N 031104080
19	501011190	CLAMP.....	2	REPLACES P/N 607010040
20	011006010	BOLT 6X10.....	2	REPLACES P/N 001220610
21	030206150	WASHER, LOCK M6	2	
22	955400800	SWITCH, HORN BUTTON ASSY.	1	
23	955405980	COVER, HORN BUTTON	1	
24	515447320	CORD, HORN	1	
25	955405710	WIRE CLAMP	2	
26	515449860	HARNESS	1	
27	955200030	HEAD LAMP ASSY. 12V@25W	1	
28	0105050616	BOLT 6X15.....	2	REPLACES P/N 001220615
29	030206150	WASHER, LOCK M6	2	
30	304402600	CAP	1	
60	956100024	THROTTLE WIRE	1	
61	515337100	ENGINE SPACER	1	
62	011208025	BOLT 8X25.....	1	REPLACES P/N 001220825
63	030208200	WASHER, LOCK M8	1	
64	90741889810	KEY 7X7X33.....	1	REPLACES P/N 951400520
65	952400690	WASHER 9X35X4.5	1	
66	515338220	ENGINE PULLEY	1	
67	012210040	BOLT 10X40.....	4	REPLACES P/N 001221040
68	030210250	WASHER, LOCK M10	8	
69	012210040	BOLT 10X40.....	4	REPLACES P/N 001421040
70	031110160	WASHER, FLAT M10	2	
71	952404110	COLLAR	2	
72	402010110	COIL SPRING.....	1	REPLACES P/N 301010950
73	0030004000	NUT M4.....	1	REPLACES P/N 020304030
75	90131ZE3790	DRAIN JOINT.....	2	REPLACES P/N 953406230
76	031112230	DRAIN WASHER.....	2	REPLACES P/N 953406240

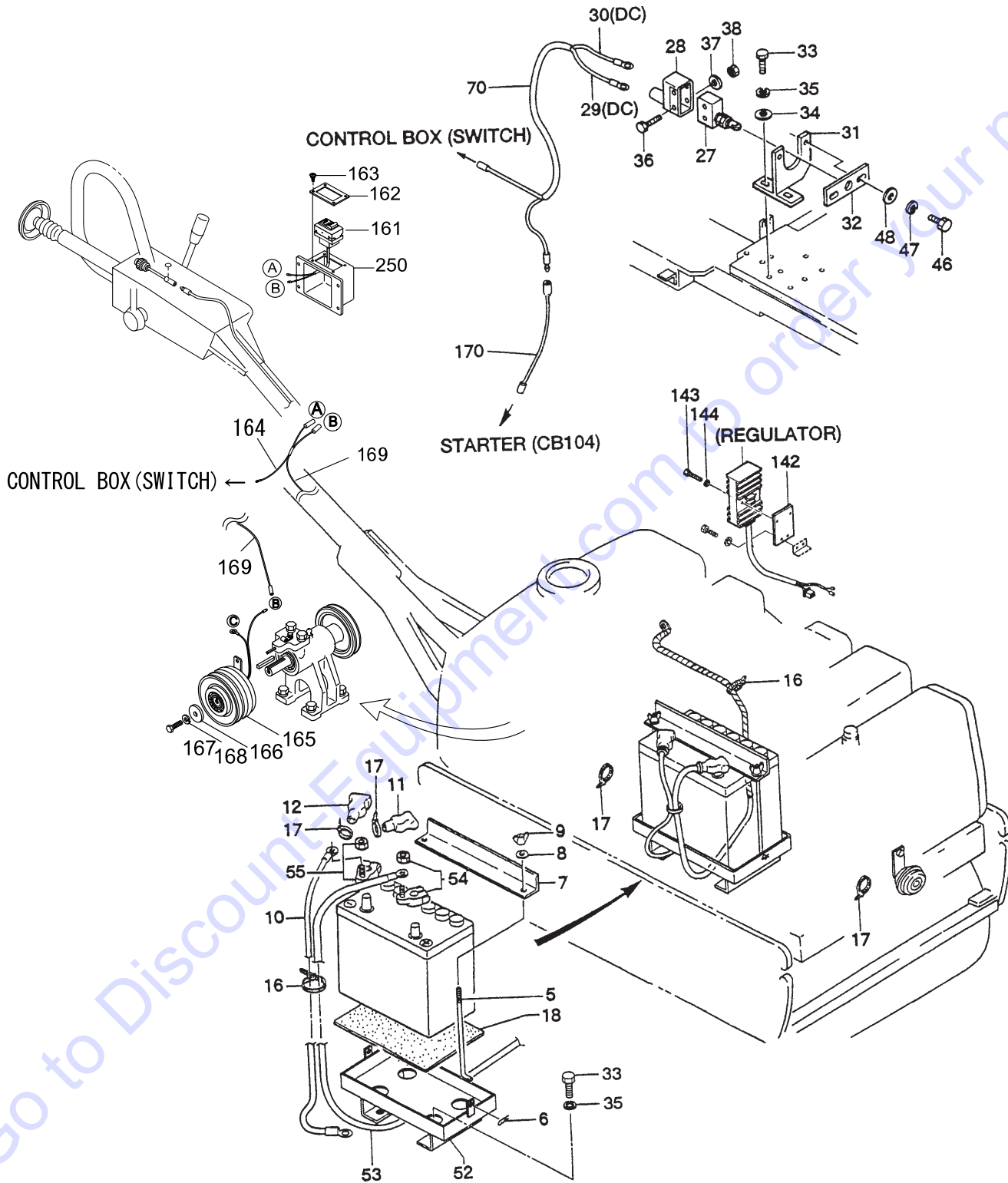


## ENGINE ASSY. (CONT'D.)

<u>NO.</u>	<u>PART NO.</u>	<u>PART NAME</u>	<u>QTY.</u>	<u>REMARKS</u>
77	954001760	OIL HOSE	1	
78	954406080	CLIP, OIL HOSE	2	
79	959026002	TUBE	1	
80	515450941	JOINT.....	1.....	REPLACES P/N 515450940
81	014208020	BOLT 8X20.....	1.....	REPLACES P/N 001220820
82	030208200	WASHER, LOCK M8	1	
83	506010070	CLAMP	3	
90	912239009	ENGINE GX390K1SM32 .....	1.....	REPLACES P/N 912239006 S/N G2326 ~ P4357
90	912239009	ENGINE GX390U1SM32.....	1.....	S/N P4386 ~ W7268
90	912239014	ENGINE GX390UT2SM32.....	1.....	S/N W7319 ~ B1030
90	912239024	ENGINE GX390UT2SCM1 .....	1.....	S/N C1253 ~ ABOVE
91	515451010	WIRE HARNESS	1	
92	515010070	GROMMET	1	
93	955300420	HORN ASSY.,DC12V	1	
94	959021812	SPIRAL TUBE	1	
95	959021810	SPIRAL TUBE.....	1.....	REPLACES P/N 959021811
96	515449910	SWITCH CP, W/CORD	1	
97	515449920	CORD, LAMP	2	
98	011006010	BOLT 6X10.....	1.....	REPLACES P/N 001220610
99	030206150	WASHER, LOCK M6	1	
100	90131896650	BOLT, DRAIN PLUG .....	1.....	REPLACES P/N 90131883000
101	031112230	WASHER DRAIN PLUG M12 .....	1.....	REPLACES P/N 9410912000



# ELECTRIC DEVICE ASSY.



## ELECTRIC DEVICE ASSY.

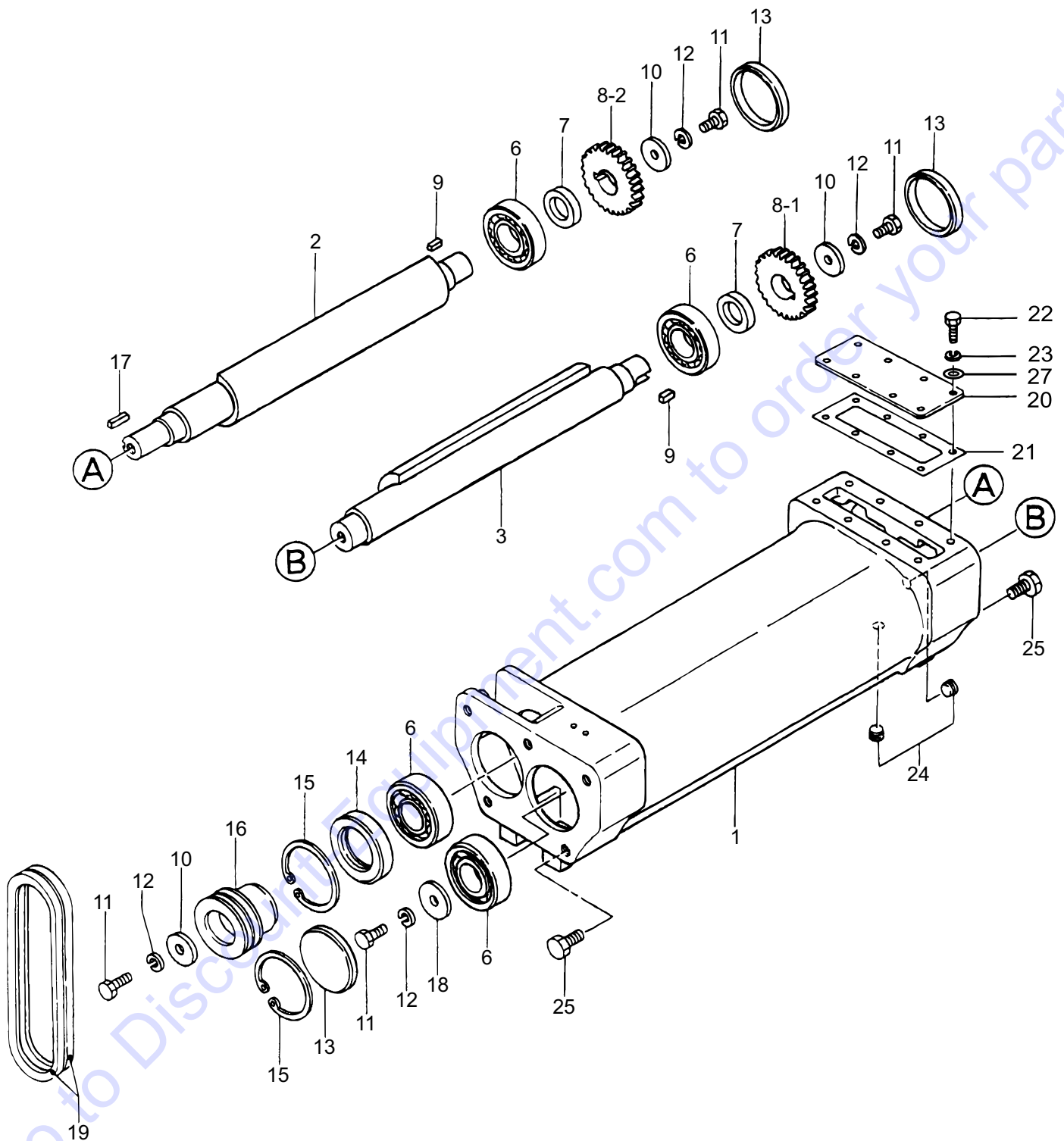
<u>NO.</u>	<u>PART NO.</u>	<u>PART NAME</u>	<u>QTY.</u>	<u>REMARKS</u>
5	515448210	ROD, BATTERY	2	
6	025910060	COTTER PIN .....	2	REPLACES P/N 607010080
7	516455640	HOLDER, BATTERY .....	1	REPLACES P/N 515447370
8	952404470	WASHER, FLAT M6.....	2	REPLACES P/N 031106100
9	0037806000	WING NUT M6.....	2	REPLACES P/N 022410616
10	515447360	BATTERY CORD (-)	1	
11	055300500	TERMINAL COVER (+)	1	
12	955300470	TERMINAL COVER (-).....	1	REPLACES P/N 955300510
16	507010110	CLAMP	3	
17	506010070	CLAMP	10	
18	601303150	RUBBER PLATE	1	
27	955405910	MICRO-SWITCH	1	
28	955405450	COVER, MICROSWITCH	1	
29	515449840	READ CORD	1	
30	515449850	READ CORD	1	
31	515337110	HOLDER, MICRO-SWITCH	1	
32	515449230	PLATE, MICRO-SWITCH	1	
33	012210020	BOLT 10X20.....	6	REPLACES P/N 001221020
34	031110160	WASHER, FLAT M10	2	
35	030210250	WASHER, LOCK M10	6	
36	001200430	BOLT 4X30	2	
37	58042	WASHER, FLAT M4.....	2	REPLACES P/N 031104080
38	022710405	NYLON NUT M4	2	
46	0105050616	BOLT 6X15.....	2	REPLACES P/N 001220615
47	030206150	WASHER, LOCK M6	2	
48	952404470	WASHER, FLAT M6.....	2	REPLACES P/N 031106100
52	516337580	BASE, BATTERY	1	
53	515448530	BATTERY CORD (+) 1100L.....	1	REPLACES P/N 515450740
54	955300480	BATTERY TERMINAL (+)	1	
55	955300490	BATTERY TERMINAL (-)	1	
70	515453230	READ CORD (M-SWITCH) 550L- 2	1	
142	515451000	BRACKET, REGULATOR	1	
143	011606025	BOLT 6X25.....	2	REPLACES P/N 001220625
144	030206150	WASHER, LOCK M6	2	
161	516217920	SEESAW SWITCH/MAG.CLUTCH	1	
162	516458960	SWITCH PLATE	1	
163	091505015	SCREW 5X15, WASHER, LOCK	4	
164	515364090	WIRE HARNESS	1	
165	515349890	MAGNETIC CLUTCH	1	
166	515464040	WASHER 11X42X4	1	
167	001221020	BOLT 10X20	1	
168	030210250	WASHER, LOCK M10	1	
169	515349790	WIRE HARNESS/MAG. CLUTCH	1	
170	515450930	WIRE HARNESS 300L	1	
250	516353210	SWITCH BOX/MAGNET. CLUTCH	1	



## CLUTCH (VIBRATION) ASSY.

<u>NO.</u>	<u>PART NO.</u>	<u>PART NAME</u>	<u>QTY.</u>	<u>REMARKS</u>
A	515910140	CLUTCH, BRACKET CP .....	1.....	INCLUDES ITEMS W/#
1#	515463550	COUNTER PULLEY	1	
2#	515212980	COUNTER BRACKET	1	
3#	951403020	KEY 7X7X26	1	
4#	043006206	BEARING 6206V	2	
5#	080100620	STOP RING	2	
6#	952402470	COLLAR 11X36X6	1	
7#	012010030	BOLT 10X30 .....	7.....	REPLACES P/N 001221030
8#	030210250	WASHER, LOCK M10	7	
9#	516458360	CLUTCH STAY	1	
11#	951400280	KEY 5X5X38	1	
12#	025406036	SPRING PIN 6X36	1	
13#	515349900	COUNTER SHAFT	1	
14#	505015060	GREASE FITTING 1/8" .....	1.....	REPLACES P/N 301010100
161	516217920	SEESAW SWITCH/MAG, CLUTCH	1	
162	516458960	SWITCH PLATE	1	
163	091505015	SCREW 5X15, WASHER, LOCK	4	
164	515364090	WIRE HARNESS	1	
165	515349890	MAGNETIC CLUTCH .....	1.....	REPLACES P/N 515149890
166	515464040	WASHER 11X42X4	1	
167	012210020	BOLT 10X20 .....	1.....	REPLACES P/N 001221020
168	030210250	WASHER, LOCK M10	1	
169	515349790	WIRE HARNESS/MAG. CLUTCH	1	
170	011006010	BOLT 6X10, WASHER, LOCK .....	1.....	REPLACES P/N 002210610
172	515451010	WIRE HARNESS	1	
270	2267510103	CLAMP	1	

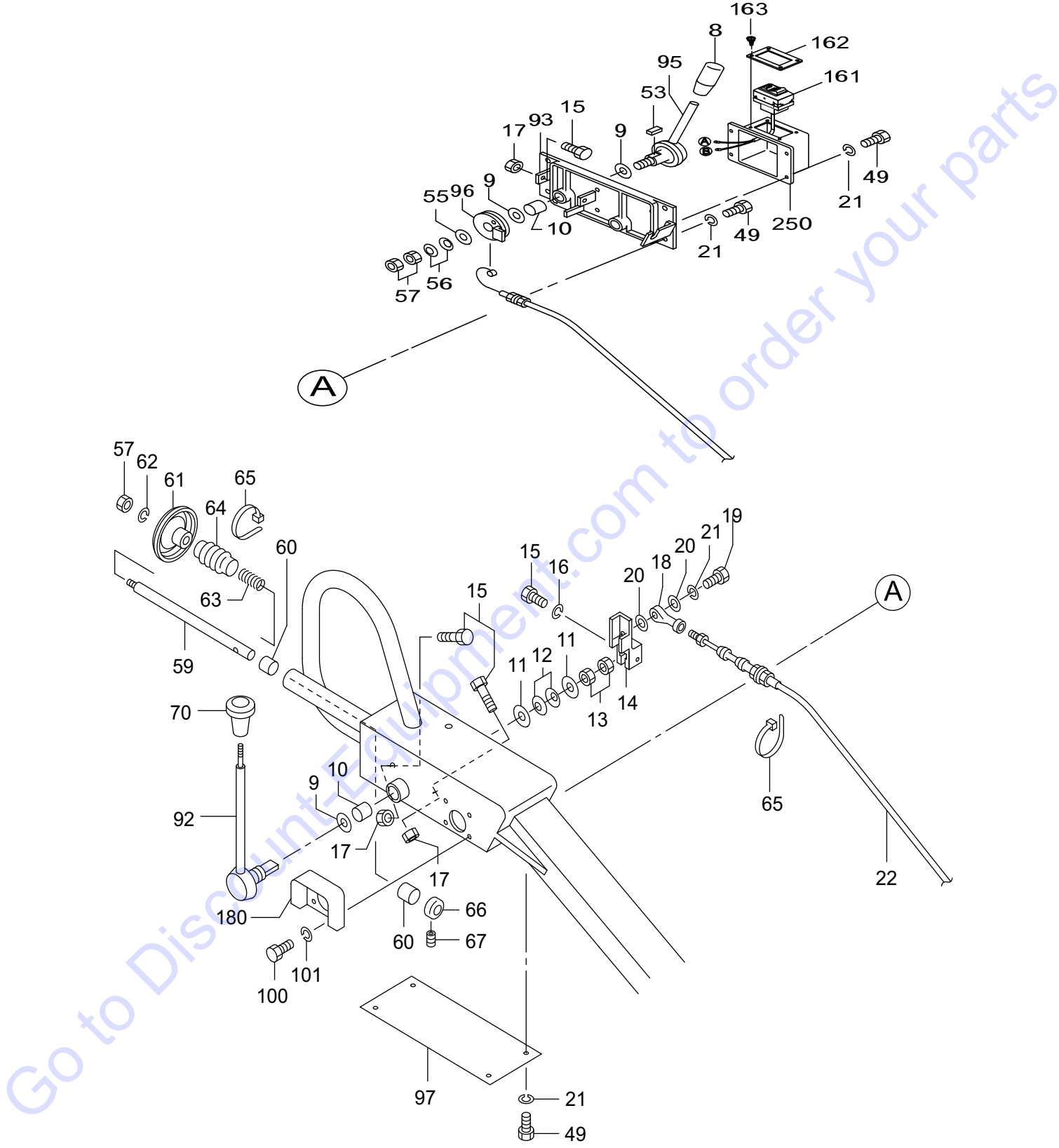
# VIBRATOR ASSY.



## VIBRATOR ASSY.

<u>NO.</u>	<u>PART NO.</u>	<u>PART NAME</u>	<u>QTY.</u>	<u>REMARKS</u>
1	515113090	VIBRATING CASE	1	
2	515334111	ROTARY SHAFT, DRIVE	1	
3	515334121	ROTARY SHAFT, DRIVEN	1	
6	040406308	BEARING 6308C4	4	
7	501011020	GEAR SPACER	2	
8-1	501011000	GEAR 38-1P	2	
8-2	501011001	GEAR 38-2P	2	
9	951400080	KEY 10X8X17 .....	2	REPLACES P/N 951400081
10	952400900	WASHER 13446	3	
11	012212030	BOLT 12X30.....	4	REPLACES P/N 001221230
12	030212300	WASHER, LOCK M12	4	
13	953405570	SEAL CAP	3	
14	060206020	OIL SEAL	1	
15	080100900	STOP RING	2	
16	515447040	PULLEY	1	
17	951400090	KEY 10X8X33	1	
18	952401590	WASHER	1	
19	070100381	V-BELT A-38 RED	2	
20	515334140	COVER, GEAR	1	
21	515334150	PACKING, COVER	1	
22	014208020	BOLT 8X20.....	8	REPLACES P/N 001220820
23	030208200	WASHER, LOCK M8	8	
24	16185	PLUG PT1/4" .....	2	REPLACES P/N 894230
25	012214030	BOLT 14X25.....	10	REPLACES P/N 001221425
27	0401450080	WASHER, FLAT M8.....	8	REPLACES P/N 031108160

# UPPER CONTROL ARM ASSY.

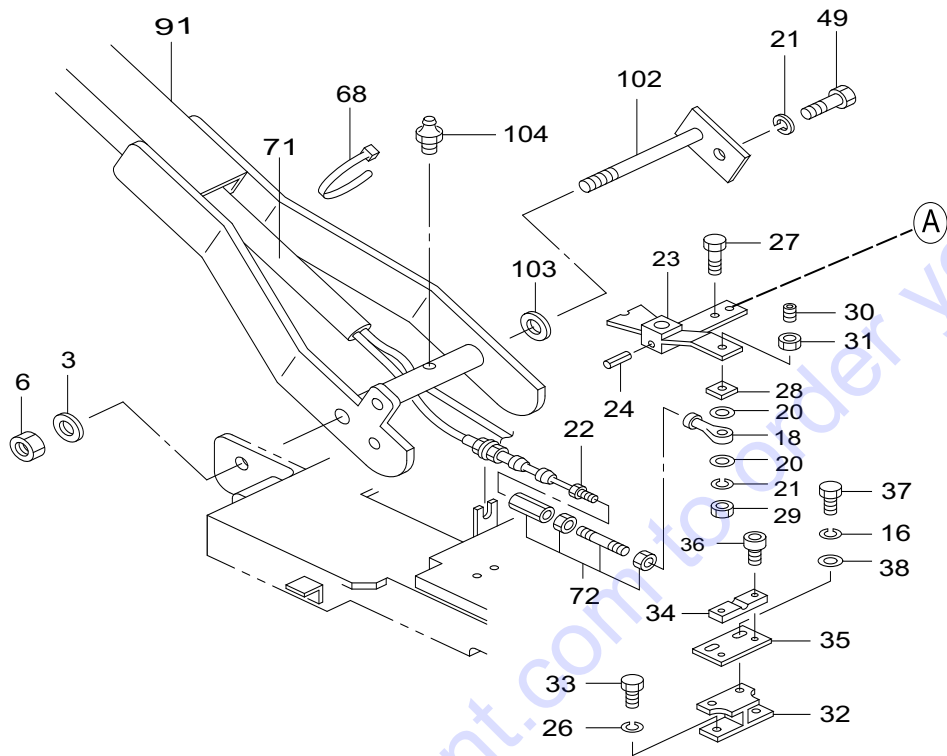


## UPPER CONTROL ARM ASSY.

<u>NO.</u>	<u>PART NO.</u>	<u>PART NAME</u>	<u>QTY.</u>	<u>REMARKS</u>
8	959403840	BAR GRIP, I.D. 12MM	1	
9	953402930	COPPER PACKING	3	
10	509010130	BUSHING	2	
11	952405700	WASHER 19X40X0.6	2	
12	032118300	CONICAL SPRING WASHER M18	2	
13	020418110	NUT M18	2	
14	515349480	LEVER JOINT, TRAVELLING	1	
15	011208030	BOLT 8X30 .....	4	REPLACES P/N 001220830
16	030208200	WASHER, LOCK M8	3	
17	020108060	NUT M8 .....	3	REPLACES P/N 020308060
18	501011162	ROD END	2	
19	011206020	BOLT 6X20 .....	1	REPLACES P/N 001220620
20	952404470	WASHER 6.5X15X1.6	4	
21	030206150	WASHER, LOCK M6	14	
22	515342360	CABLE ASSY.	1	
49	0105050616	BOLT 6X15 .....	12	REPLACES P/N 001220615
53	951401431	KEY 5X5X8	1	
55	952404790	WASHER	1	
56	032212250	CONICAL SPRING WASHER M12	2	
57	0039312000	NUT M12 .....	3	REPLACES P/N 020312100
59	515334820	ROD	1	
60	509010140	BUSHING	2	
61	515447720	DISC PLATE, DEAD-MAN	1	
62	030212300	WASHER, LOCK M12	1	
63	509436980	SPRING, DEAD-MAN	1	
64	509436990	PROTECTOR, DEAD-MAN	1	
65	507010110	CLAMP	2	
66	509436960	ROD STOPPER, DEAD-MAN	1	
67	01420601	SOCKET HEAD SCREW 6X6 .....	2	REPLACES P/N 099206006
70	959300870	KNOB	1	
92	515336492	TRAVELLING LEVER	1	
93	515212950	LEVER SUPPORT, VIB. E/G	1	
95	515336500	LEVER, E/G	1	
96	515349490	GUIDE, WIRE (E/G)	1	
97	509436950	COVER, HANDLE BOX	1	
100	011006010	BOLT 6X10 .....	4	REPLACES P/N 001220610
101	030206150	WASHER, LOCK M6	4	
161	516217920	SEESAW SWITCH	1	
162	516458960	SWITCH PLATE	1	
163	091505015	SCREW 5X15, WASHER, LOCK	4	
180	517452260	COVER	1	
250	516353210	SWITCH BOX	1	

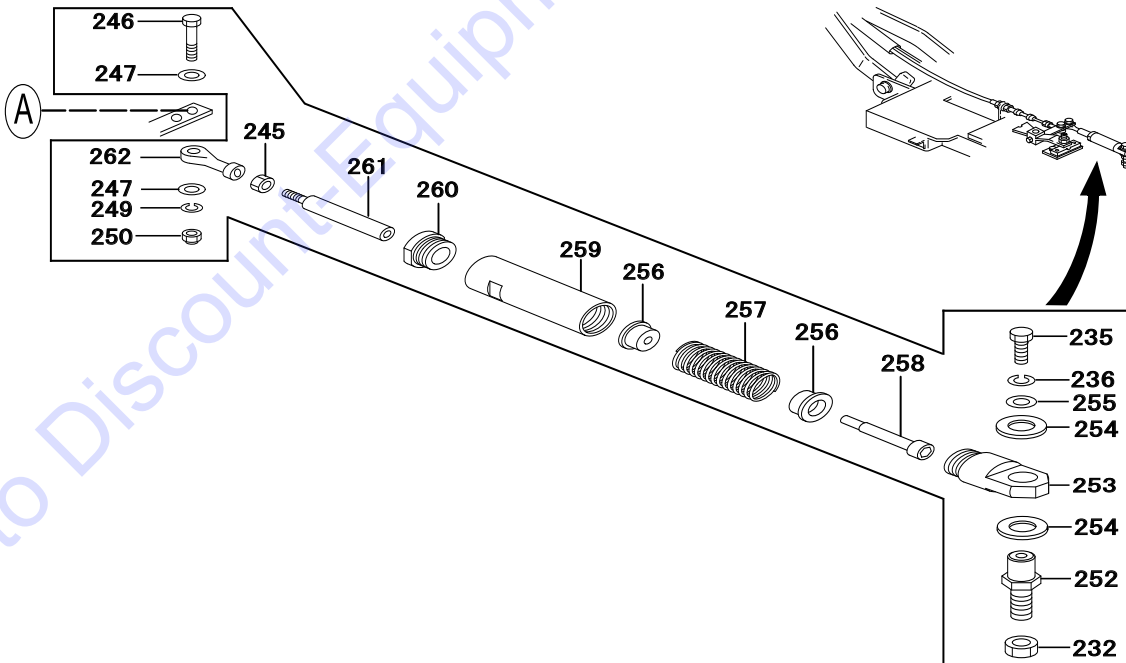


# LOWER CONTROL ARM ASSY.



## OPTION (DEAD MAN)

### NEW TYPE



## LOWER CONTROL ARM ASSY.

<u>NO.</u>	<u>PART NO.</u>	<u>PART NAME</u>	<u>QTY.</u>	<u>REMARKS</u>
3	0401450200	WASHER, FLAT M20.....	1.....	REPLACES P/N 031120320
6	022522017	LOCK NUT U-M20	1	
16	030208200	WASHER, LOCK M8	3	
18	501011162	ROD END	2	
20	952404470	WASHER	4	
21	030206150	WASHER, LOCK M6	14	
22	515342360	CABLE ASSY. 1700L	1	
23	515335780	LEVER, E-START	1	
24	025306032	SPRING PIN 6X32.....	1.....	REPLACES P/N 025406032
26	030210250	WASHER, LOCK M10	2	
27	001220635	BOLT 6X35	1	
28	515450560	SPACER	1	
29	022710607	NYLON NUT M6	1	
30	505015150	SPRING PLUNGER M16	1	
31	020416100	NUT M16	1	
32	509321160	GUIDE HOLDER	1	
33	012210020	BOLT 10X20 .....	2.....	REPLACES P/N 001221020
34	515448170	GUIDE	1	
35	515448180	SLIDE PLATE	1	
36	014206015	SOCKET HEAD BOLT 6X15 .....	2.....	REPLACES P/N 001520615
37	011008015	BOLT 8X15.....	2.....	REPLACES P/N 001220815
38	0401450080	WASHER, FLAT M8.....	3.....	REPLACES P/N 031108160
49	0105050616	BOLT 6X15 .....	12.....	REPLACES P/N 001220615
68	506010070	CLAMP	8	
71	959021911	TUBE 25D-850L	1	
72	501910010	TURN BUCKLE ASSY.	1	
91	515120220	HANDLE (PIN-TYPE) .....	1.....	REPLACES P/N 515119120
102	515454971	HANDLE PIN	1	
103	515454980	COLLAR (HANDLE)	1	
104	351010050	GREASE FITTING A-MT 6X1	1	
232	0039312000	NUT M12.....	1.....	REPLACES P/N 020312100
235	011008015	BOLT 8X15 .....	1.....	REPLACES P/N 001220815
236	030208200	WASHER, LOCK M8	1	
245	020106050	NUT M6.....	1.....	REPLACES P/N 020306050
246	001220630	BOLT 6X30	1	
247	952404470	WASHER	2	
249	030206150	WASHER, LOCK M6	1	
250	022710607	NYLON NUT M6	1	
252	515452200	HOLDER, SPRING CYLINDER	1	
253	515461580	LINK CAP	1	
254	506442940	COLLAR	2	
255	952401560	WASHER	1	
256	506442920	PISTON	1	
257	515461570	SPRING (DEAD MAN)	1	
258	515461600	INNER SHAFT	1	
259	515461590	CYLINDER	1	
260	506442930	CAP	1	
261	515461610	OUTER SHAFT	1	
262	501011162	ROD END	1	

# PARTS FINDER

**Search Website  
by Part Number**



**Search Manual  
Library For Parts  
Manual & Lookup Part  
Numbers – Purchase  
or Request Quote**

**Search Manuals**

Enter your information to help us find the right parts manual for your machine.

\* Brand:

\* Model:

\* Serial:

\* Part Number:

SEARCH

**Can't Find Part or  
Manual? Request Help  
by Manufacturer,  
Model & Description**

**Parts Order Form**

Please fill in the following information to help us find the right part for your machine.

Manufacturer:	<input type="text"/>
Model:	<input type="text"/>
Description:	<input type="text"/>
Part Number:	<input type="text"/>
Quantity:	<input type="text"/>
Notes:	<input type="text"/>

Submit

Discount-Equipment.com is your online resource for quality parts & equipment.

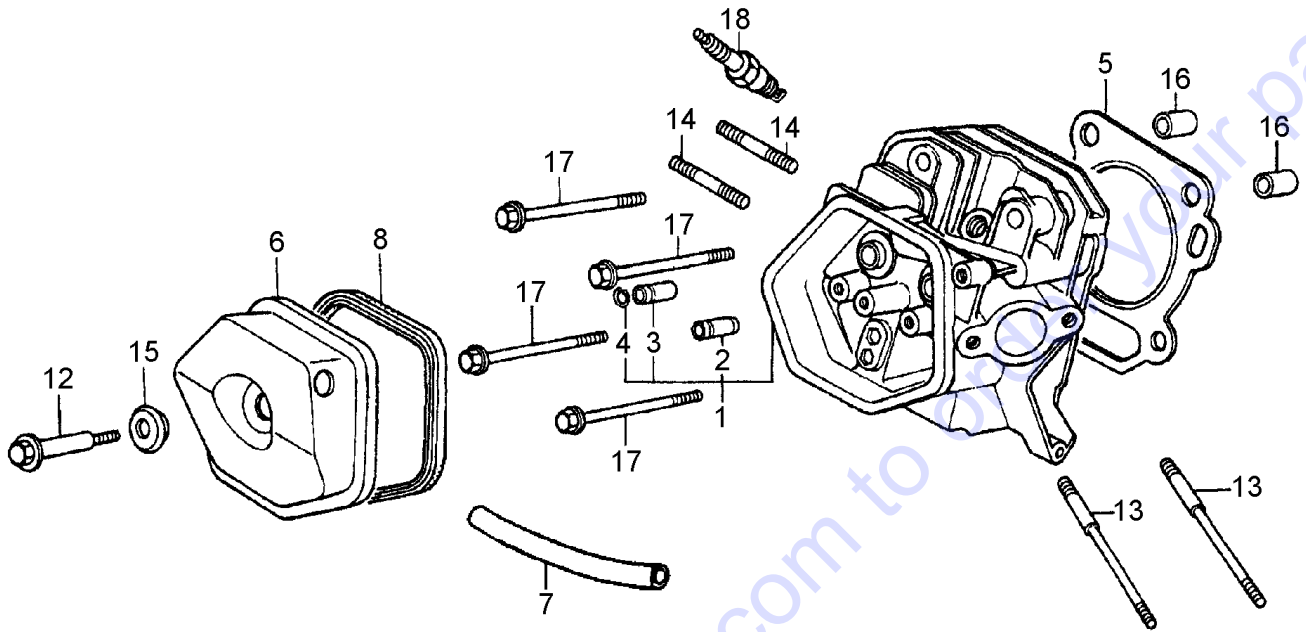
Florida: **561-964-4949** Outside Florida TOLL FREE: **877-690-3101**

**Need parts?**

Click on this link: <http://www.discount-equipment.com/category/5443-parts/> and choose one of the options to help get the right parts and equipment you are looking for. Please have the machine model and serial number available in order to help us get you the correct parts. If you don't find the part on the website or on one of the online manuals, please fill out the request form and one of our experienced staff members will get back to you with a quote for the right part that your machine needs.

We sell worldwide for the brands: Genie, Terex, JLG, MultiQuip, Mikasa, Essick, Whiteman, Mayco, Toro Stone, Diamond Products, Generac Magnum, Airman, Haulotte, Barreto, Power Blanket, Nifty Lift, Atlas Copco, Chicago Pneumatic, Allmand, Miller Curber, Skyjack, Lull, Skytrak, Tsurumi, Husquvarna Target, Stow, Wacker, Sakai, Mi-T-M, Sullair, Basic, Dynapac, MBW, Weber, Bartell, Bennar Newman, Haulotte, Ditch Runner, Menegotti, Morrison, Contec, Buddy, Crown, Edco, Wyco, Bomag, Laymor, EZ Trench, Bil-Jax, F.S. Curtis, Gehl Pavers, Heli, Honda, ICS/PowerGrit, IHI, Partner, Imer, Clipper, MMD, Koshin, Rice, CH&E, General Equipment, Amida, Coleman, NAC, Gradall, Square Shooter, Kent, Stanley, Tamco, Toku, Hatz, Kohler, Robin, Wisconsin, Northrock, Oztec, Toker TK, Rol-Air, APT, Wylie, Ingersoll Rand / Doosan, Innovatech, Con X, Ammann, Mecalac, Makinex, Smith Surface Prep, Small Line, Wanco, Yanmar

# HONDA GX390 SERIES ENGINE — CYLINDER HEAD ASSY.



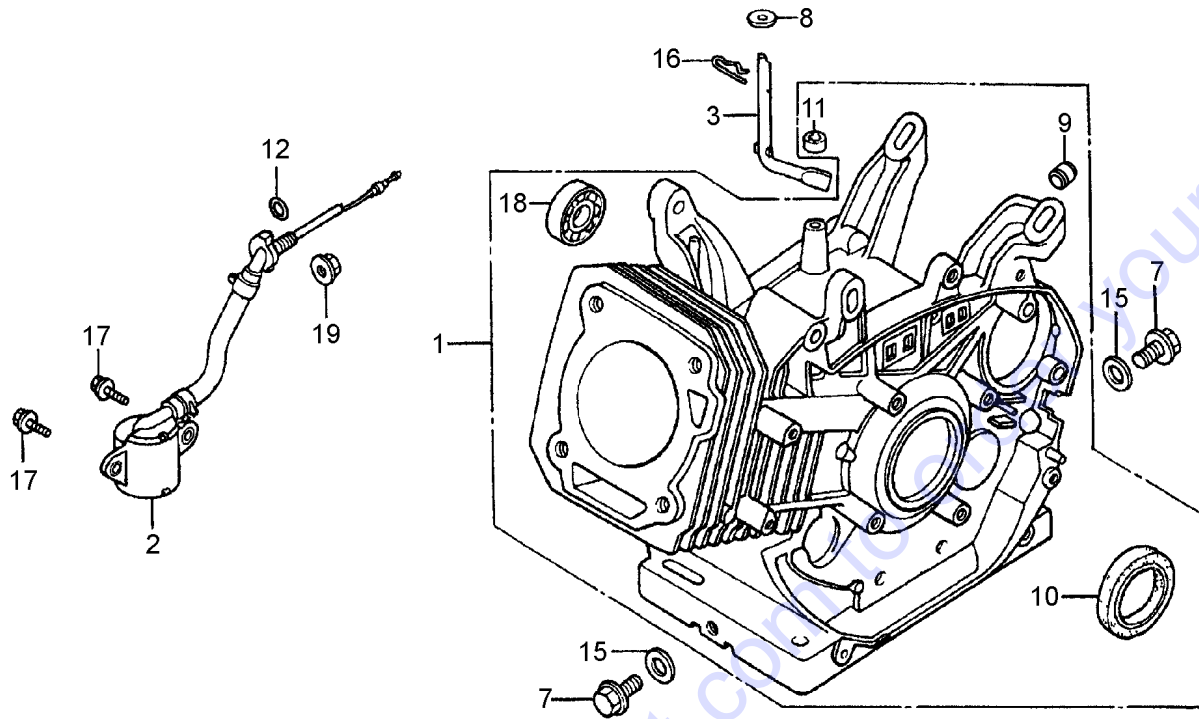
## HONDA GX390 SERIES ENGINE — CYLINDER HEAD ASSY.

NO.	PART NO.	PART NAME	QTY.	REMARKS
1◇♣	12200ZF6406	HEAD COMP., CYLINDER.....	1.....	INCLUDES ITEMS W/#
1❖	12210Z5T406	HEAD COMP., CYLINDER.....	1.....	INCLUDES ITEMS W/%
1◆	12210-Z5T-416	HEAD COMP., CYLINDER.....	1.....	INCLUDES ITEMS W/\$
2#%\$	12204ZE2306	GUIDE, IN. VALVE (OVERSIZE)	1	
3#%\$	12205ZE2305	GUIDE, EX. VALVE (OVERSIZE)	1	
4#%\$	12216ZE2300	CLIP, VALVE GUIDE	1	
5◇♣	12251ZF6W00	GASKET, CYLINDER HEAD	1	
5❖◆	12251Z5T003	GASKET, CYLINDER HEAD	1	
6	12310ZE2020	COVER COMP., HEAD	1	
6◆	12310-ZE3-791	COVER COMP., HEAD	1	
7◇	950051110530	TUBE, BREATHER	1	
7♣	950051100130M	TUBE, BREATHER	1	
7❖	12357Z5T020	TUBE, BREATHER	1	
7◆	12315-ZE3-840	TUBE, BREATHER	1	
8	12391ZE2020	PACKING, HEAD COVER	1	
12◇♣	90014ZE2000	BOLT, HEAD COVER	1	
12❖◆	90014Z5T000	BOLT, HEAD COVER	1	
13	90042ZE8000	BOLT, STUD 8X31.5	2	
14	92900080320E	BOLT, STUD 8X32	2	
15	90441ZE2010	WASHER COMP., HEAD COVER	1	
16	9430112200	PIN, DOWEL 12X20	2	
17	957011008000	BOLT, FLANGE 10X80	4	
18	9807956846	SPARK PLUG, NKG, BPR6ES	1	
18◆	065-01404-80	SPARK PLUG, NKG, BPR6ES	1	

### NOTICE

- ◇ Honda GX390K1SM32
- ♣ Honda GX390U1SM32
- ❖ Honda GX390UT2SM32
- ◆ Honda GX390UT2SCM1

# HONDA GX390 SERIES ENGINE — CYL. BARREL ASSY.



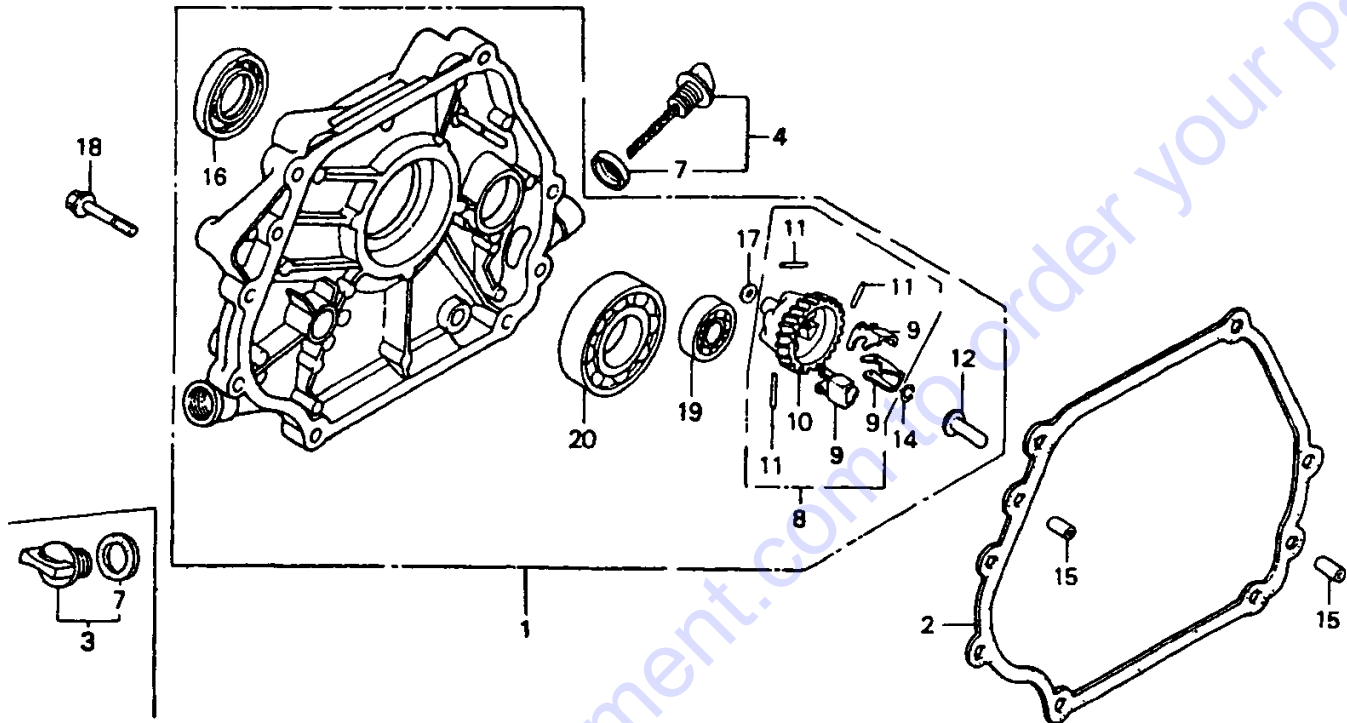
## HONDA GX390 SERIES ENGINE — CYL. BARREL ASSY.

NO.	PART NO.	PART NAME	QTY.	REMARKS
1◇	12000ZF6L04	BARREL ASSY., CYLINDER.....	1.....	INCLUDES ITEMS W/#
1♣	12000ZF6435	BARREL ASSY., CYLINDER.....	1.....	INCLUDES ITEMS W/%
1❖	12000Z5T405	BARREL ASSY., CYLINDER.....	1.....	INCLUDES ITEMS W/\$
1◆	12000Z5T405	BARREL ASSY., CYLINDER.....	1.....	INCLUDES ITEMS W/&
2◇♣	15510ZE2053	SWITCH ASSY, OIL LEVEL	1	
2❖◆	35480ZF6003	SWITCH ASSY, OIL LEVEL	1	
3	16541ZE3010	SHAFT, GOVERNOR ARM	1	
7	90131896650	BOLT, DRAIN PLUG.....	2.....	REPLACES P/N 90131883000
8	90446KE1000	WASHER, 8.2X17X0.8	1	
9◇#	90801ZE2003	PLUG, SEALING.....	1.....	NOT USED ON ❖, ♣, ◆ ENGINES
10#%	91201ZE3004	OIL SEAL 35X52X8	1	
10\$&	91201Z1C003	OIL SEAL 35X52X8	1	
11#%\$&	91201ZE9003	OIL SEAL 8X14X5.....	1.....	REPLACES P/N 91203952771
12	91353671003	O-RING 14MM.....	1.....	REPLACES P/N 91353671004
15	031112230	WASHER, DRAIN PLUG 12MM.....	2.....	REPLACES P/N 9410912000
16	9425110000	PIN, LOCK 10MM	1	
17	957010601200	FLANGE BOLT 6X12	2	
18#%\$&	961006202000	BEARING, RADIAL BALL 6202	1	
19	9405010000	NUT, FLANGE, 10MM	1	

### NOTICE

- ◇ Honda GX390K1SM32
- ♣ Honda GX390U1SM32
- ❖ Honda GX390UT2SM32
- ◆ Honda GX390UT2SCM1

# HONDA GX390 SERIES ENGINE — CRANKCASE CVR. ASSY.





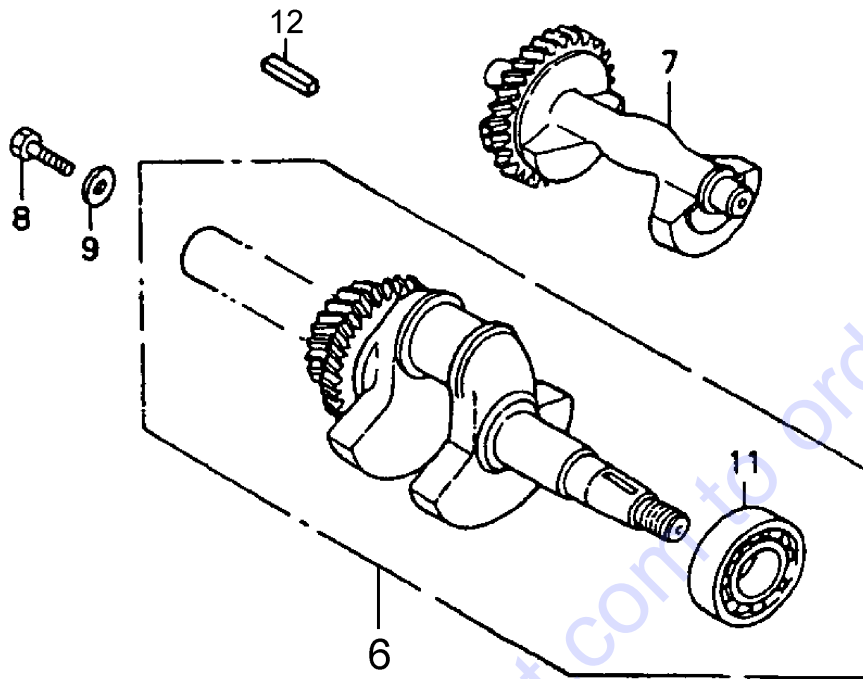
# HONDA GX390 SERIES ENGINE — CRANKCASE CVR. ASSY.

NO.	PART NO.	PART NAME	QTY.	REMARKS
1◇♣	11300ZE3040	COVER ASSY., CRANKCASE.....	1.....	INCLUDES ITEMS W/#
1❖♦	11300Z1C000	COVER ASSY., CRANKCASE.....	1.....	INCLUDES ITEMS W/\$
2◇♣	11381ZE3801	PACKING, CRANKCASE COVER	1	
2❖♦	11381Z5T000	PACKING, CRANKCASE COVER	1	
3◇♣	15600ZG4003	OIL PLUG ASSY. ....	1.....	INCLUDES ITEM W/@
3❖♦	15600Z0T820	OIL PLUG ASSY.....	1.....	INCLUDES ITEM W/&
4◇♣	15600735003	CAP ASSY., OIL FILLER .....	1.....	INCLUDES ITEMS W/♥
4❖♦	15600Z1C000	CAP ASSY., OIL FILLER .....	1.....	INCLUDES ITEMS W/♠
7@♥	15625ZE1003	PACKING, OIL FILLER CAP .....	2.....	USED ON ◇, ♣ ENGINES
7&♠	15625Z0T800	PACKING, OIL FILLER CAP .....	2.....	USED ON ❖, ♦ ENGINES
8#\$	16510ZE3000	GOVERNOR ASSY. ....	1.....	INCLUDES ITEMS W/%
9#%\$	16511ZE8000	WEIGHT, GOVERNOR	3	
10#%\$	16512ZE3000	HOLDER, GOVERNOR WEIGHT	1	
11#%\$	16513ZE2000	PIN, GOVERNOR WEIGHT	3	
12#\$	16531Z0A000	SLIDER, GOVERNOR	1	
14#\$	90602ZE1000	CLIP, GOVERNOR HOLDER	1	
15	90701HC4000	PIN, DOWEL 8X12	2	
16#	91201ZE3004	OIL SEAL 35X52X8 .....	1.....	USED ON ◇, ♣ ENGINES
16\$	91201Z1C003	OIL SEAL 35X52X8 .....	1.....	USED ON ❖, ♦ ENGINES
17#\$	58176	WASHER, FLAT 6MM.....	1.....	REPLACES P/N 9410106800
18	957010804000	BOLT, FLANGE 8X40	7	
19#\$	961006202000	BEARING, RADIAL BALL 6202	1	
20#\$	961006207000	BEARING, RADIAL BALL 6207	1	

## NOTICE

- ◇ Honda GX390K1SM32
- ♣ Honda GX390U1SM32
- ❖ Honda GX390UT2SM32
- ♦ Honda GX390UT2SCM1

# HONDA GX390 SERIES ENGINE — CRANKSHAFT ASSY.



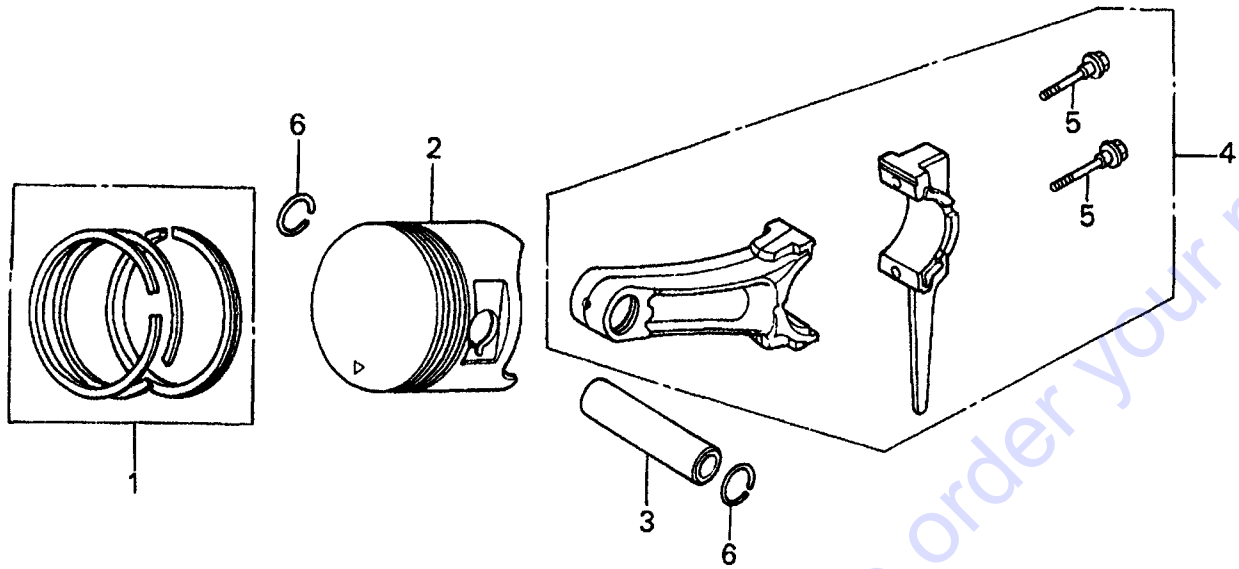
## HONDA GX390 SERIES ENGINE — CRANKSHAFT ASSY.

NO.	PART NO.	PART NAME	QTY.	REMARKS
6◇	13310ZF6W70	CRANKSHAFT COMP.....	1.....	INCLUDES ITEM W/#
6♣❖◆	13310ZF6W72	CRANKSHAFT COMP.....	1.....	INCLUDES ITEM W/%
7◇	13351ZE3010	WEIGHT, BALANCER	1	
7♣❖◆	13351-Z1C-900	WEIGHT, BALANCER	1	
8◇♣❖	92101080250A	BOLT, HEX. 8X25	1	
9◇♣❖	90534706010	WASHER, LOCK 8MM	1	
11#	91001ZF6003	BEARING, RADIAL BALL 6207SH.....	1.....	USED ON ◇ENGINE
11%	91001ZF6013	BEARING, RADIAL BALL, 6207SH.....	1.....	USED ON ♣,❖AND◆ ENGINES
12	90741889810	KEY, 7X7X33 .....	1.....	REPLACES P/N 90741805000

### NOTICE

- ◇ Honda GX390K1SM32
- ♣ Honda GX390U1SM32
- ❖ Honda GX390UT2SM32
- ◆ Honda GX390UT2SCM1

# HONDA GX390 SERIES ENGINE — PISTON ASSY.



Go to Discount-Equipment.com to order your parts

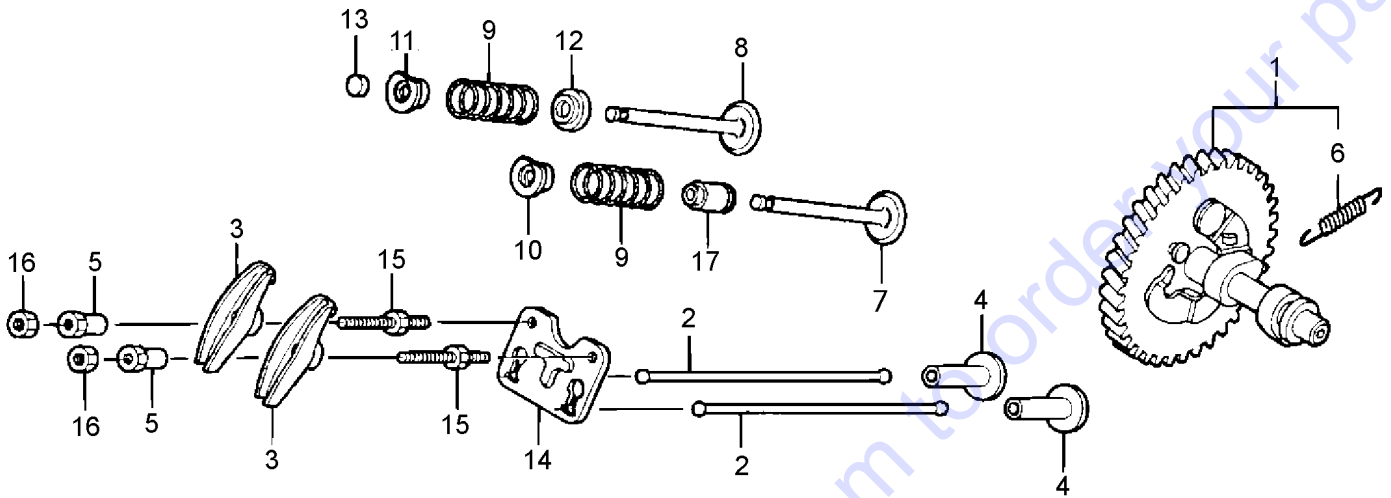
## HONDA GX390 SERIES ENGINE — PISTON ASSY.

NO.	PART NO.	PART NAME	QTY.	REMARKS
1◇♣	13010ZF6003	RING SET, PISTON (STD.)	1	
1❖◆	13010Z5R004	RING SET, PISTON (STD.)	1	
1◇♣	13011ZF6003	RING SET, PISTON (0.25)	1	
1❖◆	13011Z5R004	RING SET, PISTON (0.25)	1	
1◇♣	13012ZF6005	RING SET, PISTON (0.50).....	1	REPLACES P/N 13012ZF6003
1❖◆	13012Z5R004	RING SET, PISTON (0.50)	1	
1◇	13013ZF6003	RING SET, PISTON (0.75)	1	
1♣	13104ZF6W00	RING SET, PISTON (0.75)	1	
1❖◆	13013Z5R004	RING SET, PISTON (0.75)	1	
2◇♣	13101ZF6W00	PISTON (STD.)	1	
2❖	13101Z5T800	PISTON (STD.)	1	
2◆	13101Z1C900	PISTON (STD.)	1	
2◇♣	13102ZF6W00	PISTON (0.25)	1	
2❖◆	13102Z5T800	PISTON (0.25)	1	
2◇♣	13103ZF6W00	PISTON (0.50)	1	
2❖◆	13103Z5T800	PISTON (0.50)	1	
2◇♣	13104ZF6W00	PISTON (0.75)	1	
2❖◆	13104Z5T800	PISTON (0.75)	1	
3◇♣	13111ZF6W00	PIN PISTON	1	
3❖◆	13111Z5T000	PIN PISTON	1	
4◇	13200ZE3010	ROD ASSY., CONNECTING (STD.).....	1	INCLUDES ITEM W/%
4♣	13200ZE3020	ROD ASSY., CONNECTING (STD.).....	1	INCLUDES ITEM W/%
4❖	13200Z1C000	ROD ASSY., CONNECTING (STD.).....	1	INCLUDES ITEM W/%
4◆	13200-Z1C-900	ROD ASSY., CONNECTING (STD.).....	1	INCLUDES ITEM W/%
4◇♣	13200ZE3315	ROD ASSY., CONNECTING (0.25).....	1	INCLUDES ITEM W/%
4❖	13200Z1C305	ROD ASSY., CONNECTING (0.25).....	1	INCLUDES ITEM W/%
5%	90001ZE8000	BOLT, CONNECTING ROD	2	
6	90601ZE3000	CLIP, PISTON PIN, 20MM	2	

### NOTICE

- ◇ Honda GX390K1SM32
- ♣ Honda GX390U1SM32
- ❖ Honda GX390UT2SM32
- ◆ Honda GX390UT2SCM1

# HONDA GX390 SERIES ENGINE — CAMSHAFT ASSY.



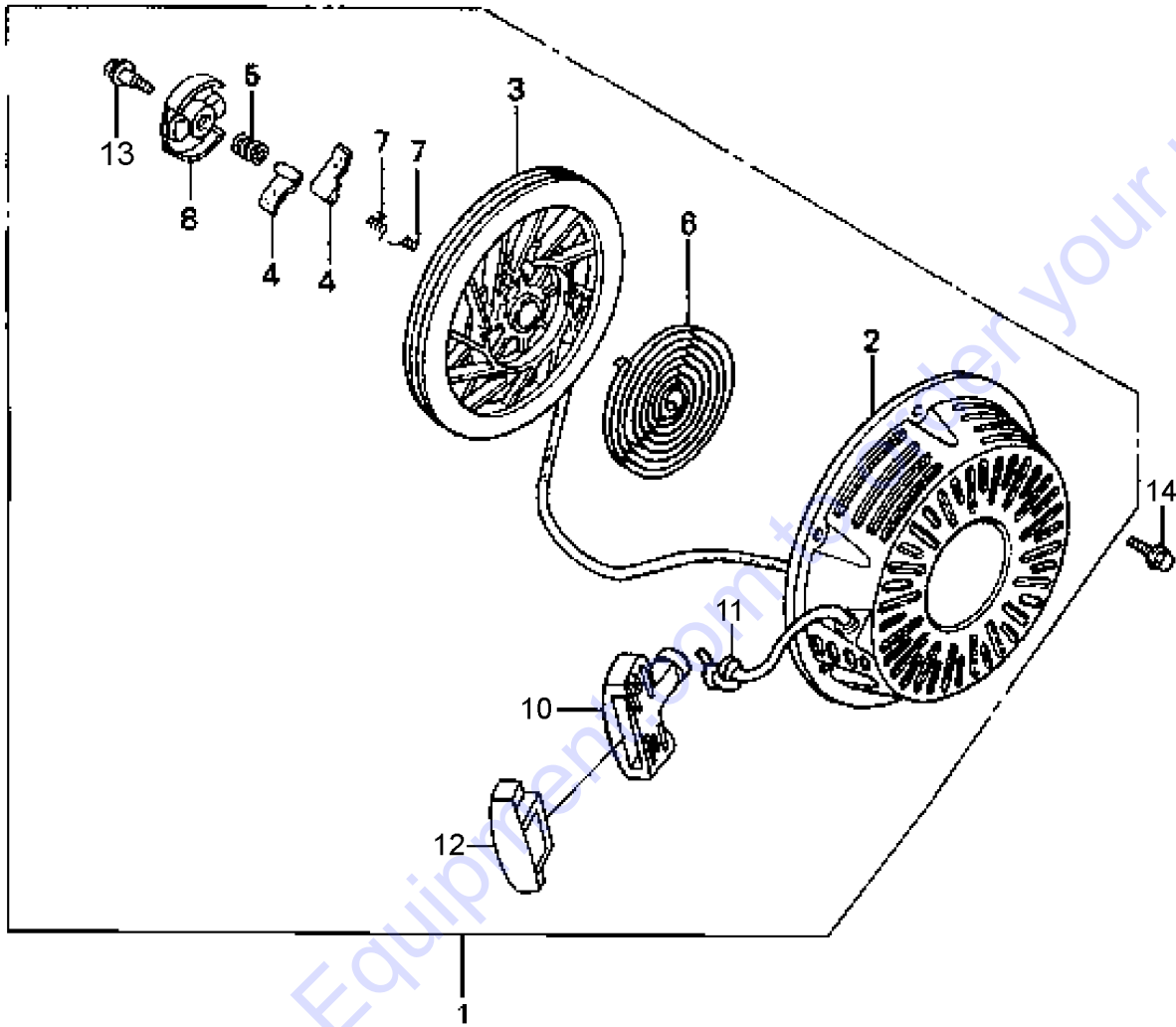
## HONDA GX390 SERIES ENGINE — CAMSHAFT ASSY.

NO.	PART NO.	PART NAME	QTY.	REMARKS
1◇♣	14100ZF6W01	CAMSHAFT ASSY.....	1.....	INCLUDES ITEM W/\$
1❖	14100Z5T810	CAMSHAFT ASSY.....	1.....	INCLUDES ITEM W/\$
		.....		S/N 1097146 AND BELOW
1❖	14100Z5T910	CAMSHAFT ASSY.....	1.....	S/N 1097147 AND ABOVE
1◆	14100Z5T910	CAMSHAFT ASSY.....	1.....	INCLUDES ITEM W/\$
2◇♣	14410ZE3013	ROD, PUSH	2	
2❖	14410Z1C000	ROD, PUSH	2	
3	14431ZE2010	ARM, VALVE ROCKER	2	
4	14441ZE2000	LIFTER, VALVE	2	
5	14451ZE1013	PIVOT, ROCKER ARM	2	
5	14451-Z4M-000	PIVOT, ROCKER ARM	2	
6\$	14568ZE1000	SPRING, WEIGHT RETURN	1	
7◇♣	14711ZE3000	VALVE, IN.	1	
7❖	14711Z5T000	VALVE, IN.	1	
7◆	14711-Z5T-900	VALVE, IN.	1	
8◇♣	14721ZE3000	VALVE, EX.	1	
8❖	14721Z5T000	VALVE, EX.	1	
8◆	14721-Z5T-900	VALVE, EX.	1	
9◇♣	14751ZE2003	SPRING, VALVE	2	
9❖◆	14751Z1C000	SPRING, VALVE	2	
10◇♣	14771ZE2000	RETAINER, IN. VALVE SPRING	1	
10❖◆	14771Z8S000	RETAINER, IN. VALVE SPRING	1	
11	14773ZE2000	RETAINER, EX. VALVE SPRING	1	
11◆	14771Z8S000	RETAINER, IN. VALVE SPRING	1	
12	14775ZE2010	SEAT, VALVE SPRING	1	
13	14781ZE2000	ROTATOR, VALVE	1	
14◇♣	14791ZE2010	PLATE, PUSH ROD	1	
14❖◆	14791Z1D000	PLATE, PUSH ROD	1	
15	90012ZE0010	BOLT, PIVOT 8MM	2	
16	90206ZE1000	NUT, PIVOT ADJUSTING	2	
17	12209ZE8003	SEAL, VALVE STEM	1	

### NOTICE

- ◇ Honda GX390K1SM32
- ♣ Honda GX390U1SM32
- ❖ Honda GX390UT2SM32
- ◆ Honda GX390UT2SCM1

# HONDA GX390 SERIES ENGINE — RECOIL STARTER ASSY.





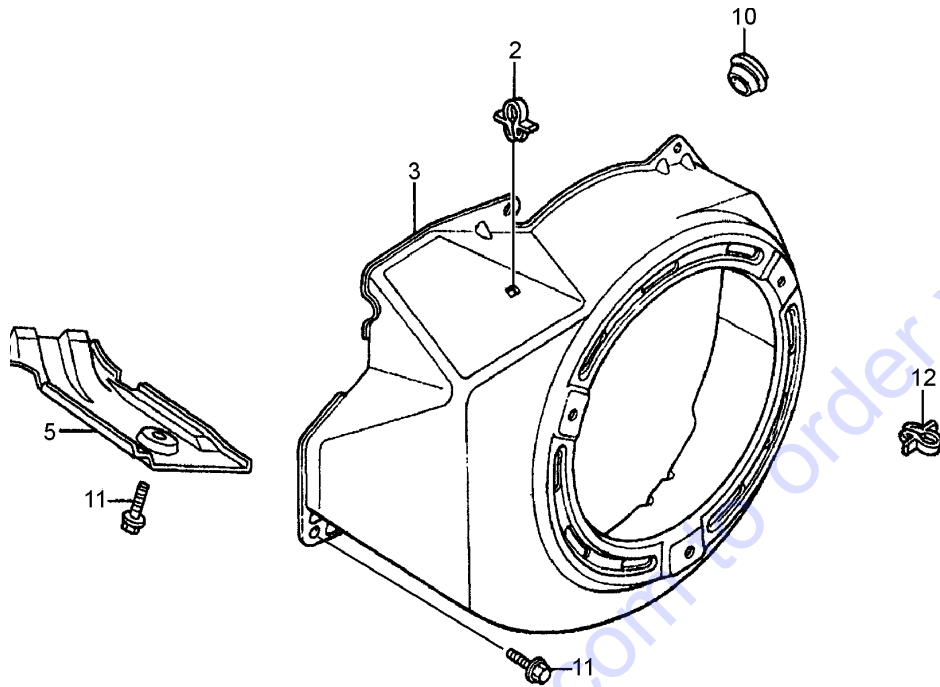
# HONDA GX390 SERIES ENGINE — RECOIL STARTER ASSY.

NO.	PART NO.	PART NAME	QTY.	REMARKS
1◇♣	28400ZE3W01ZB	STARTER ASSY., RECOIL, NH1 (BLACK)	1	INCLUDES ITEMS W/#
1❖	28400Z5T305ZB	STARTER ASSY., RECOIL, NH1 (BLACK)	1	INCLUDES ITEMS W/%
1◆	28400Z5T305ZB	STARTER ASSY., RECOIL, NH1 (BLACK)	1	INCLUDES ITEMS W/\$
2#%\$	28410ZE3W01ZB	CASE COMP., RECOIL STARTER, BLACK	1	
3#%\$	28421ZE3W01	PULLEY, RECOIL STARTER	1	
4#%\$	28422ZE2W01	RACHET, STARTER,	2	
5#%\$	28441ZE2W01	SPRING, FRICTION	1	
6#%\$	28442ZE2W01	SPRING, STARTER RETURN	1	
7#%\$	28443ZE2W01	SPRING, RATCHET	2	
8#%\$	28444ZE2W01	RETAINER, SPRING	1	
10#	28461ZE2W02	GRIP, STARTER	1	USED ON ◇ AND ♣ ENGINES
10%\$	28461Z5T305	GRIP, STARTER	1	USED ON ❖ AND ◆ ENGINES
11#%\$	28462ZV7003	ROPE, RECOIL STARTER	1	REPLACES P/N 28462ZE3W01
12%	28463Z5T003	GRIP, REINFORCEMENT	1	USED ON AND ❖ ENGINE
12\$	28463-Z5T-013	GRIP, REINFORCEMENT	1	USED ON AND ◆ ENGINE
13#%\$	90004ZE2W01	SCREW, CENTER	1	
14◇	957010600800	BOLT, FLANGE 6X8	3	
14♣❖	90008ZE2003	BOLT, FLANGE 6X10	3	
14◆	95701-0601000	BOLT, FLANGE 6X10	3	

## NOTICE

- ◇ Honda GX390K1SM32
- ♣ Honda GX390U1SM32
- ❖ Honda GX390UT2SM32
- ◆ Honda GX390UT2SCM1

# HONDA GX390 SERIES ENGINE — FAN COVER ASSY.



## HONDA GX390 SERIES ENGINE — FAN COVER ASSY.

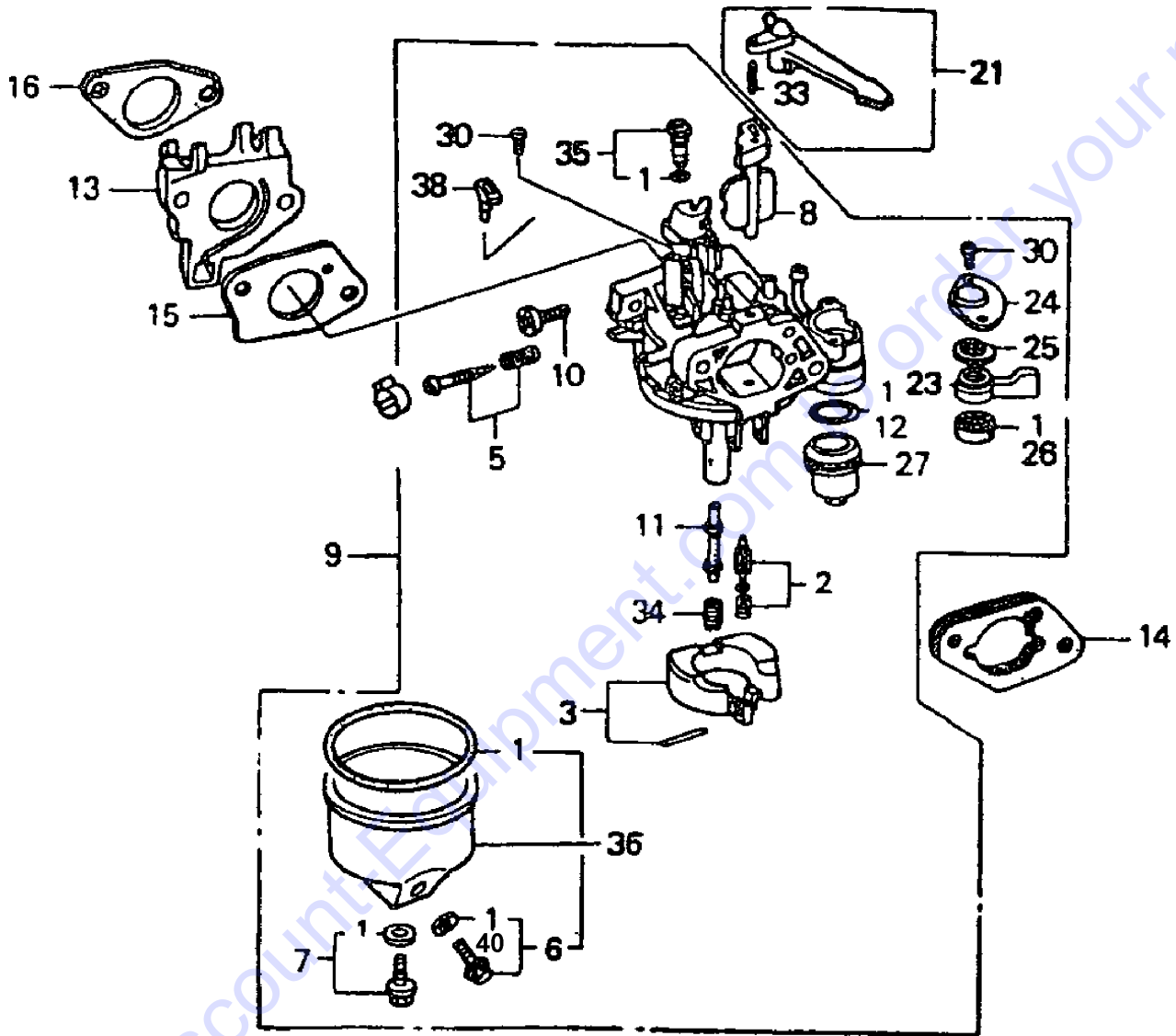
NO.	PART NO.	PART NAME	QTY.	REMARKS
2	16731ZE2003	CLIP, TUBE	1	
3◇♣	19610ZE3010ZB	COVER COMP., FAN, NH1 (BLACK)	1	
3❖◆	19610Z5T000ZB	COVER COMP., FAN, NH1 (BLACK)	1	
5◇♣	19631ZE3W00	SHROUD	1	
5❖◆	19631Z5T000	SHROUD	1	
10	81329567020	GROMMET, DRAIN HOLE	1	
11	90013883000	BOLT, FLANGE 6X12	6	
12❖◆	36103ZE1000	HOLDER, STOP SWITCH CORD	1	

### NOTICE

- ◇ Honda GX390K1SM32
- ♣ Honda GX390U1SM32
- ❖ Honda GX390UT2SM32
- ◆ Honda GX390UT2SCM1

Go to Discount-Equipment.com to order your parts

# HONDA GX390 SERIES ENGINE — CARBURETOR ASSY.



## NOTICE

Gasket Set, item 1 included with items 6, 7, 12, 26, 35, 36 and 40.

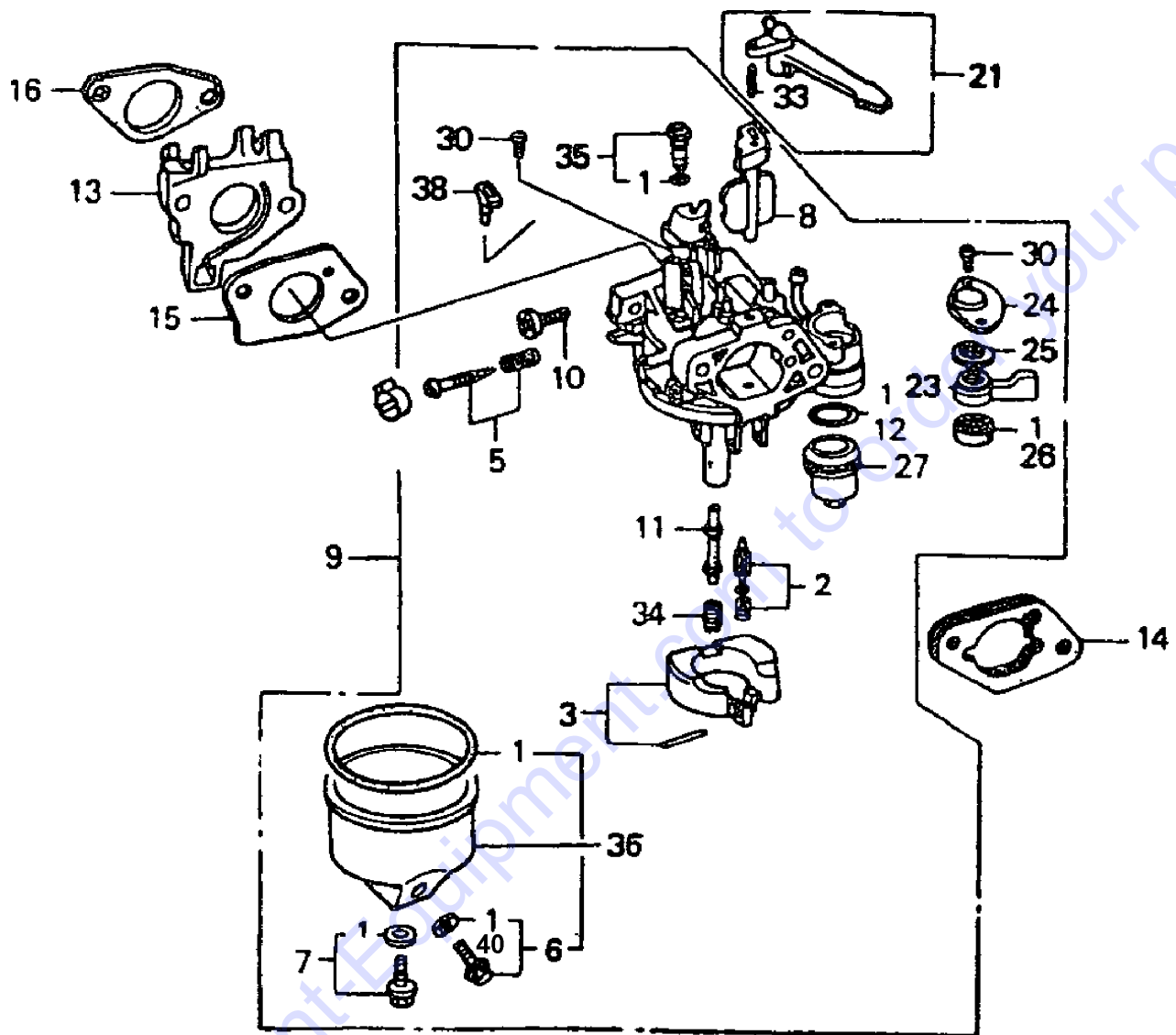
# HONDA GX390 SERIES ENGINE — CARBURETOR ASSY.

NO.	PART NO.	PART NAME	QTY.	REMARKS
1#*%\$	16010ZE2812	GASKET SET	1	
2	16011ZA0931	VALVE SET, FLOAT	1	
3#*	16013ZA0931	FLOAT SET	1	
3%\$	16013Z1C003	FLOAT SET	1	
5*	16016ZE0005	PILOT SET SCREW	1	
5%\$	16016ZH7W01	PILOT SET SCREW	1	
6#*	16024ZE1811	DRAIN SCREW SET .....	1	INCLUDES ITEM W/
6%\$	16024Z5T901	DRAIN SCREW SET .....	1	INCLUDES ITEM W/
7#*	16028ZE0005	SCREW SET .....	1	INCLUDES ITEM W/
7%\$	16028Z5T901	SCREW SET .....	1	INCLUDES ITEM W/
8#*	16044ZE3W20	CHOKE SET	1	
8%\$	16044Z5T901	CHOKE SET	1	
9	16100ZF6V01	CARB. ASSY., BE85B B (◇ ENGINE) .....	1	INCLUDES ITEMS W/#
9	16100ZF6V01	CARB. ASSY., BE85B B (♣ ENGINE) .....	1	INCLUDES ITEMS W/*
9	16100Z5T901	CARB. ASSY., BE88A A (❖ ENGINE) .....	1	INCLUDES ITEMS W/%
9	16100-Z5T-781	CARB. ASSY., BE94J A (◆ ENGINE) .....	1	INCLUDES ITEMS W/\$
10#*%\$	16124ZE0005	SCREW, THROTTLE STOP	1	
11#*	16166ZF6V00	NOZZLE, MAIN	1	
11%	16166Z5T901	NOZZLE, MAIN	1	
11\$	16166-Z5T-781	NOZZLE, MAIN	1	
12#*%\$	16955283000	PACKING, FUEL STRAINER CUP .....	1	REPLACES P/N 16173001004 INCLUDES ITEM W/
13	16211ZF6000	INSULATOR, CARBURETOR	1	
13	16211Z5T000	INSULATOR, CARBURETOR	1	
14	16220ZA0702	SPACER COMP., CARBURETOR	1	
15	16221ZF6800	PACKING, CARBURETOR	1	
15	16220ZA0702	PACKING, CARBURETOR	1	
16	16223ZE3W00	PACKING, INSULATOR	1	
16	16212Z5T000	PACKING, INSULATOR	1	

## NOTICE

- ◇ Honda GX390K1SM32
- ♣ Honda GX390U1SM32
- ❖ Honda GX390UT2SM32
- ◆ Honda GX390UT2SCM1

# HONDA GX390 SERIES ENGINE — CARB. ASSY. (CONT'D.)



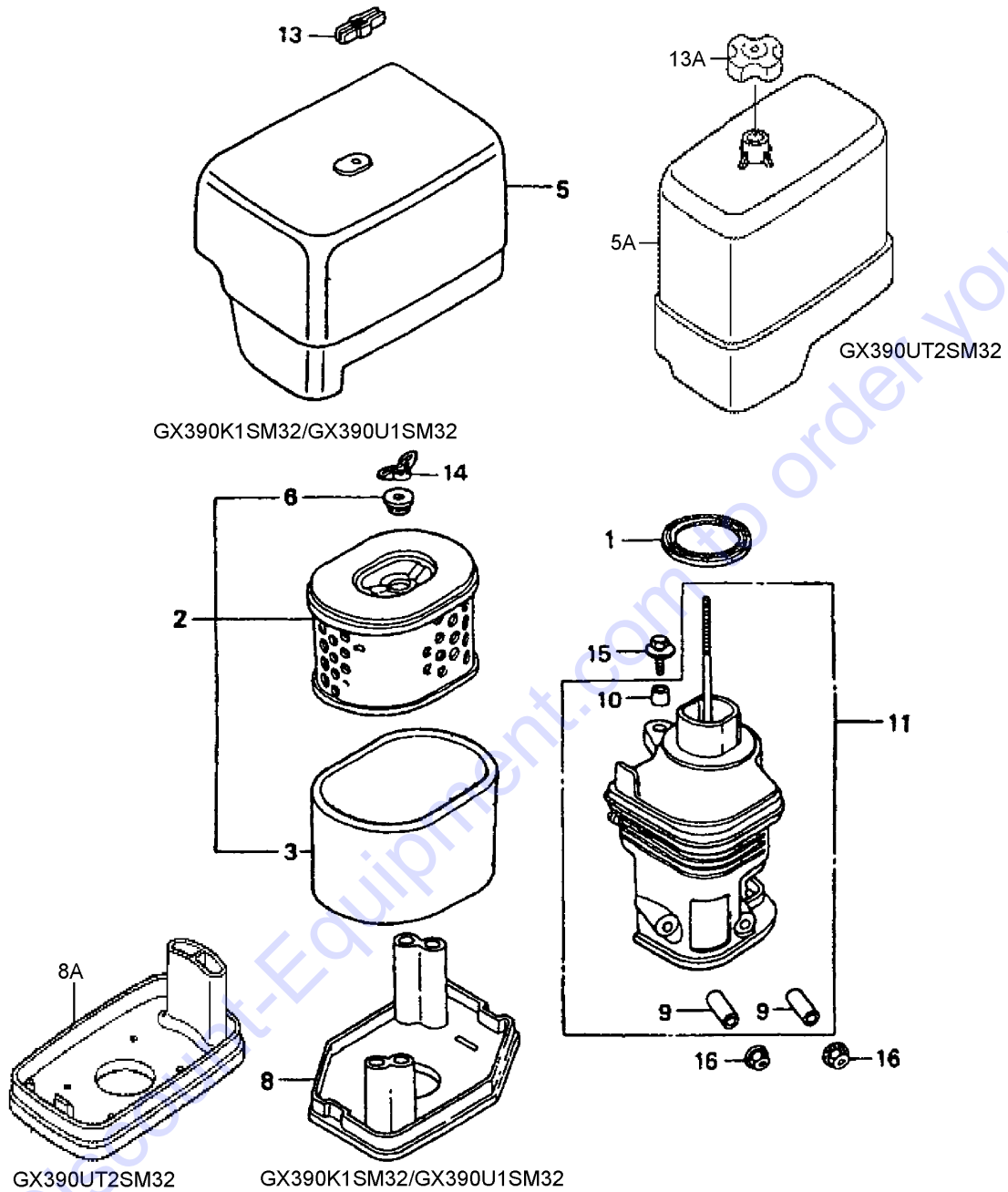
## HONDA GX390 SERIES ENGINE — CARB. ASSY. (CONT'D.)

NO.	PART NO.	PART NAME	QTY.	REMARKS
21	16610ZE1000	CHOKE LEVER COMPLETE .....	1	INCLUDES ITEM W/♣
23#*%\$	16953ZE1812	LEVER, COCK	1	
24#*%\$	16954ZE1812	PLATE, LEVER SETTING	1	
25#*%\$	16956ZE1811	SPRING, COCK LEVER	1	
26#*%\$	16957ZE1812	PACKING, FUEL COCK .....	1	INCLUDES ITEM W/♣
27#*%\$	16967ZE0811	CUP, FUEL STRAINER	1	
30#*%\$	93500030060H	SCREW 3X6 .....	3	REPLACES P/N 93500030061H
33♣	9430520122	SPRING PIN 2X12	1	
34#*	99101ZH80920	JET, MAIN #92	1	
34%	99101ZH80980	JET, MAIN #98	1	
34\$	99101-ZH81180	JET, MAIN #118	1	
35#*\$\$	99204ZA00450	PILOT JET SET, PILOT #45 .....	1	INCLUDES ITEM W/♣
35%	99204ZE00380	PILOT JET SET, PILOT #38 .....	1	INCLUDES ITEM W/♣
36#*	16015ZE8005	CHAMBER SET, FLOAT (◇/♣) .....	1	INCLUDES ITEM W/♣
36%\$	16015Z5T901	CHAMBER SET, FLOAT (❖/◆) .....	1	INCLUDES ITEM W/♣
38#*%\$	16172ZE3W10	COLLAR SET	1	
40#*%\$	16141Z0S003	DRAIN WASHER, FLAT (6.2X10.7).....	1	INCLUDES ITEM W/♣

### NOTICE

- ◇ Honda GX390K1SM32
- ♣ Honda GX390U1SM32
- ❖ Honda GX390UT2SM32
- ◆ Honda GX390UT2SCM1

# HONDA GX390 SERIES ENG. — AIR CLEANER ASSY. (STD.)





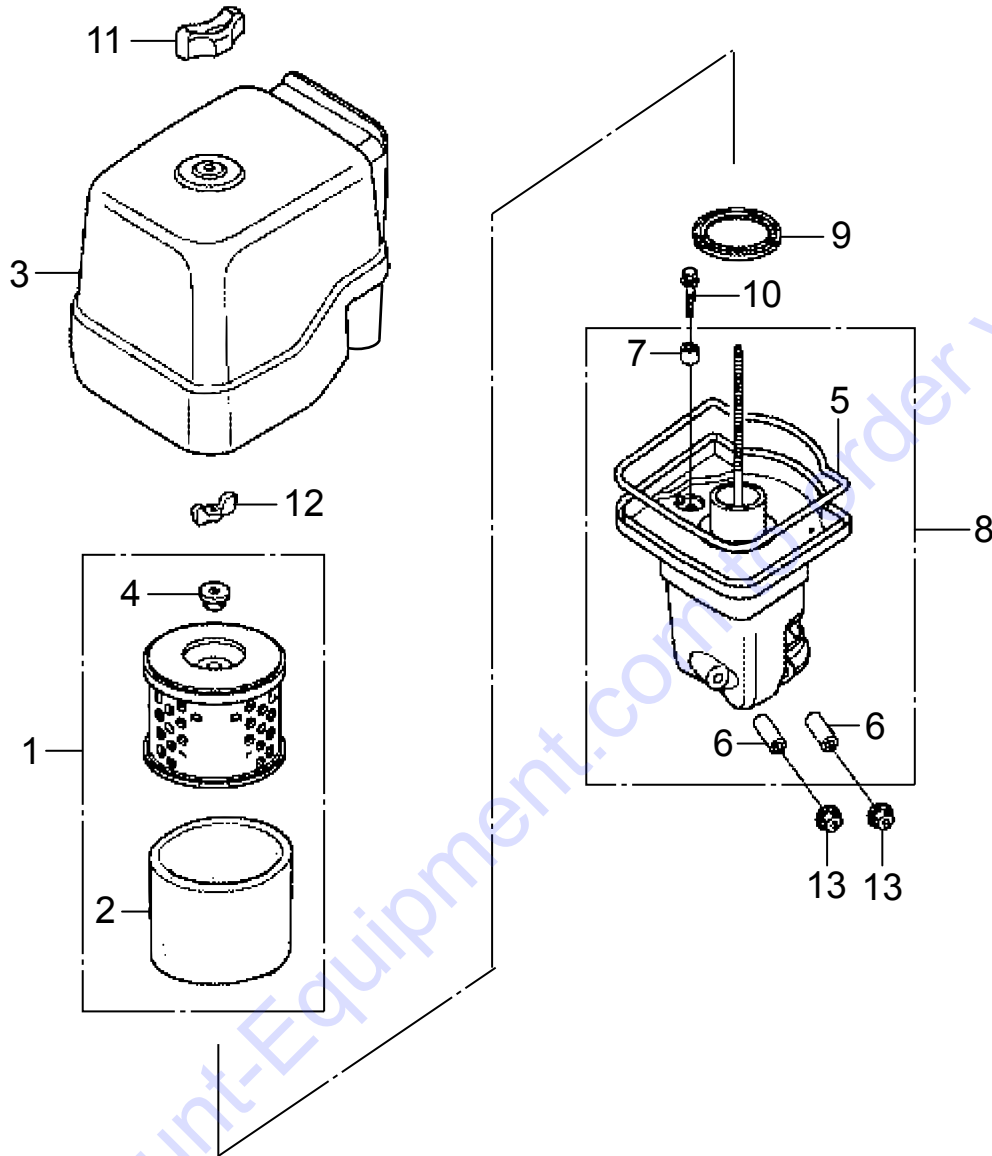
## HONDA GX390 SERIES ENG. — AIR CLEANER ASSY. (STD.)

NO.	PART NO.	PART NAME	QTY.	REMARKS
1◇♣	16271ZE2010	PACKING, ELBOW	1	
1❖	17417Z5T000	PACKING, ELBOW	1	
2	17210ZE3505	ELEMENT, AIR CLEANER .....	1	INCLUDES ITEMS W/%
3%	17218ZE3505	FILTER, OUTER	1	
5◇♣	17231ZE3W001	COVER, AIR CLEANER	1	
5A❖	17231Z5T000	COVER, AIR CLEANER	1	
6%	17232891000	GROMMET, AIR CLEANER	1	
8◇♣	17235ZH9N001	NOSE, SILENCER	1	
8A❖	17235Z5T000	NOSE, SILENCER	1	
9\$	17238ZE2310	COLLAR, AIR CLEANER	2	
10\$	17239ZE1000	COLLAR (B), AIR CLEANER	1	
11◇♣	17410ZH9N00	ELBOW COMP., AIR CLEANER .....	1	INCLUDES ITEMS W/\$
11❖	17410Z5T000	ELBOW COMP., AIR CLEANER .....	1	INCLUDES ITEMS W/\$
13◇♣	0037806000	NUT, WING 6MM, BLACK .....	1	REPLACES P/N 90203ZA0800
13A❖	90202Z2E000	KNOB, AIR CLEANER COVER	1	
14	90325044000	WING NUT	2	
15◇♣	90009ZE2003	BOLT-WASHER 6X22	1	
15❖	90009Z1C000	BOLT-WASHER 6X22	1	
16	9405006000	NUT, FLANGE 6MM	2	

### NOTICE

- ◇ Honda GX390K1SM32
- ♣ Honda GX390U1SM32
- ❖ Honda GX390UT2SM32

# HONDA GX390UT2SCM1 ENG. — AIR CLEANER ASSY. (CYCLONE)

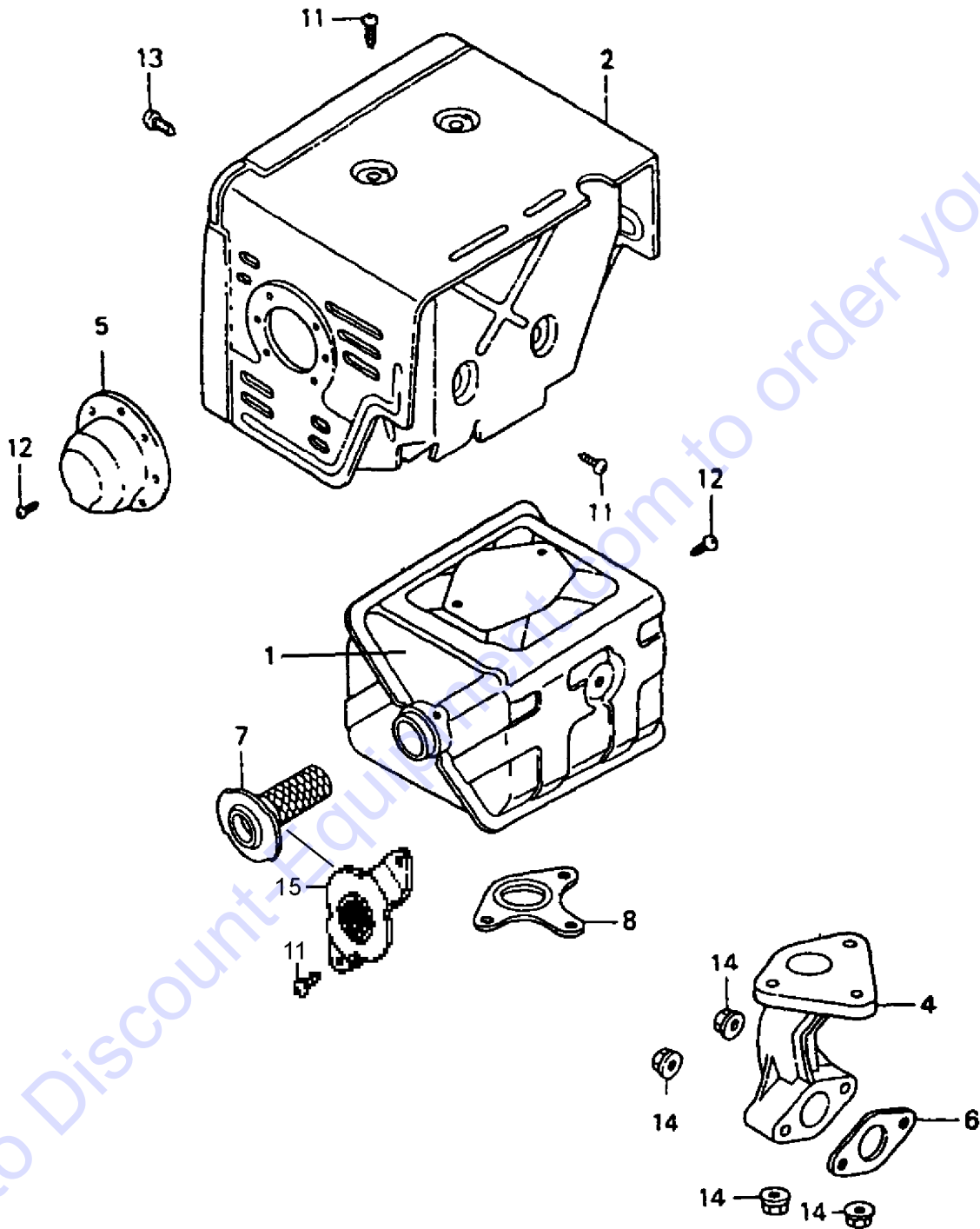


## HONDA GX390UT2SCM1 ENG. — AIR CLEANER ASSY. (CYCLONE)

NO.	PART NO.	PART NAME	QTY.	REMARKS
1	17210Z1C781	ELEMENT, AIR CLEANER .....	1.....	INCLUDES ITEMS W/%
2%	17218Z1C780	FILTER, OUTER	1	
3	17230Z1C780	COVER ASSY., AIR CLEANER	1	
4%	17232891000	GROMET, AIR CLEANER	1	
5\$	17233Z1C780	SEAL, AIR CLEANER COVER	1	
6\$	17238ZE2310	COLLAR, AIR CLEANER	2	
7\$	17239ZE3840	COLLAR B, AIR CLEANER	1	
8	17410Z1C780	ELBOW CP., AIR CLEANER.....	1.....	INCLUDES ITEMS W/\$
9	17417Z5T000	PACKING, AIR CLEANER CASE	1	
10	90009Z1C000	BOLT-WASHER 6X22	1	
11	90300Z4M800	WING-NUT, AIR CLEANER	1	
12	90325044000	WING-NUT, TOOL BOX SETTING	1	
13	9405006000	FLANGE NUT 6MM	2	

Go to Discount-Equipment.com to order your parts

# HONDA GX390 SERIES ENGINE — MUFFLER ASSY.



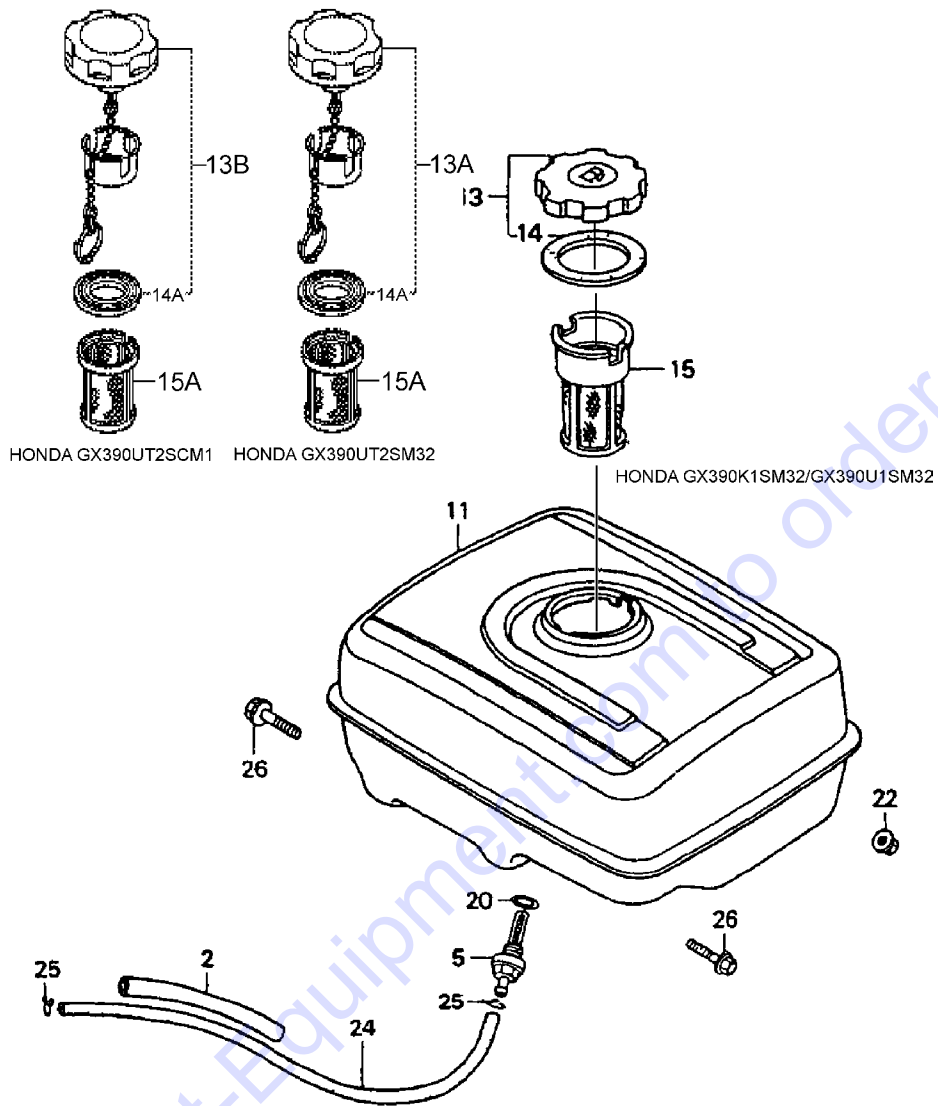
## HONDA GX390 SERIES ENGINE — MUFFLER ASSY.

NO.	PART NO.	PART NAME	QTY.	REMARKS
1◇♣	18310ZE2W61	MUFFLER COMP.	1	
1❖	18310Z5T000	MUFFLER COMP.	1	
1◆	18310-Z5T-010	MUFFLER COMP.	1	
2◇♣	18320ZE2W62	PROTECTOR COMP., MUFFLER.....	1	REPLACES P/N 18320ZE2W61
2❖◆	18320Z5T000	PROTECTOR COMP., MUFFLER	1	
4◇♣	18330ZE2W00	PIPE, EXHAUST	1	
4❖◆	18331Z5T000	PIPE, EXHAUST	1	
5	18331ZE3811	CAP, MUFFLER	1	
6	18333ZF6W01	GASKET, EX. PIPE	1	
6◆	18333-Z1C-901	GASKET, EX. PIPE	1	
7◇♣	18355ZE2W00	ARRESTER, SPARK	1	
7❖◆	18350Z5T800	ARRESTER, SPARK	1	
8◇♣	18381ZE2W10	GASKET, MUFFLER ARRESTER	1	
8❖◆	18381ZE2801	GASKET, MUFFLER ARRESTER	1	
11	90050ZE1000	TAPPING SCREW 5X8	4	
12	90055ZE1000	TAPPING SCREW 4X6	3	
13	90006ZE2000	TAPPING SCREW 6X10	1	
14	9405008000	FLANGE NUT M8	5	
15❖	18336ZE3000	FLANGE COMP., BAFFLE	1	

### NOTICE

- ◇ Honda GX390K1SM32
- ♣ Honda GX390U1SM32
- ❖ Honda GX390UT2SM32
- ◆ Honda GX390UT2SCM1

# HONDA GX390 SERIES ENGINE — FUEL TANK ASSY.



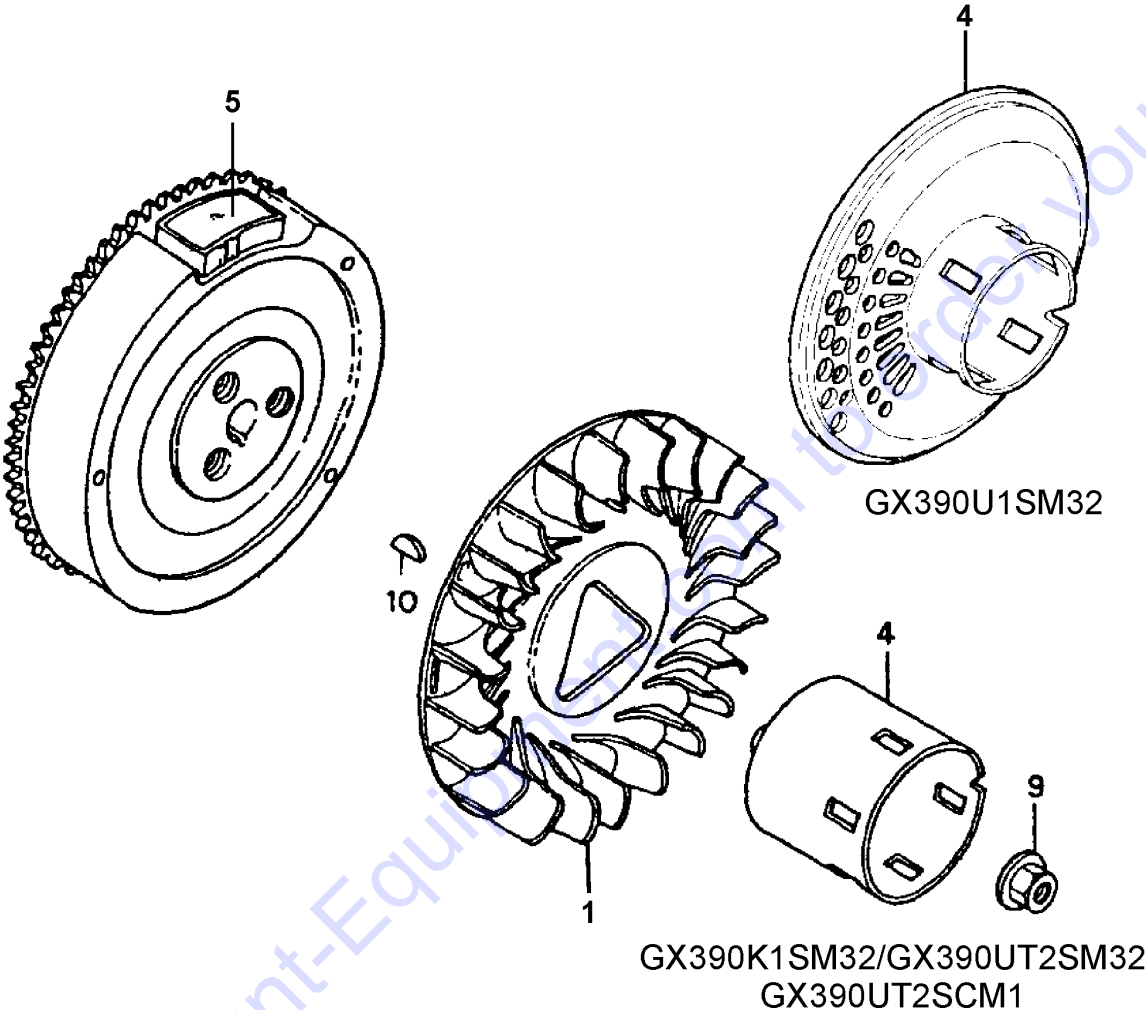
## HONDA GX390 SERIES ENGINE — FUEL TANK ASSY.

NO.	PART NO.	PART NAME	QTY.	REMARKS
2	16854ZH8000	RUBBER, SUPPORT (107MM)	1	
5◇♣	16955ZE1000	JOINT, FUEL TANK	1	
5❖◆	16955ZE1010	JOINT, FUEL TANK	1	
11◇♣	17510ZE3030ZA	TANK COMP., FUEL, NH1 (BLACK)	1	REPLACES P/N 17510ZE3010ZA
11❖◆	17510Z5T000ZA	TANK COMP., FUEL, NH1 (BLACK)	1	
13◇♣	17620ZH7023	FUEL TANK CAP CP	1	INCLUDES ITEMS W/#
13A❖	17620Z4H030	FUEL TANK CAP CP	1	INCLUDES ITEMS W/%
13B◆	17620Z4H900	FUEL TANK CAP CP	1	INCLUDES ITEMS W/\$
14◇#	17631329003	GASKET	1	REPLACES P/N 17631ZH7003
14A❖◆%\$	17631Z0T801	GASKET	1	
15◇	17672ZE2W01	FUEL FILTER	1	
15A♣❖◆	17672Z4H000	FUEL FILTER	1	
20	91353671003	O-RING 14MM	1	REPLACES P/N 91353671004
22	9405008000	FLANGE NUT M8	2	
24◇	950014523540	TUBE, FUEL 4.5X235	1	
24♣	91424Z5L802	TUBE, FUEL 4.5X235	1	REPLACES P/N 91424Z5L801
24❖◆	91424Z5T003	TUBE, FUEL 4.5X235	1	
25◇	9500202080	CLIP, TUBE	2	
25♣❖◆	950024080008	CLIP, TUBE	2	
26	957010802500	FLANGE BOLT 8X25	2	

### NOTICE

- ◇ Honda GX390K1SM32
- ♣ Honda GX390U1SM32
- ❖ Honda GX390UT2SM32
- ◆ Honda GX390UT2SCM1

**HONDA GX390 SERIES ENGINE — FLYWHEEL ASSY.**





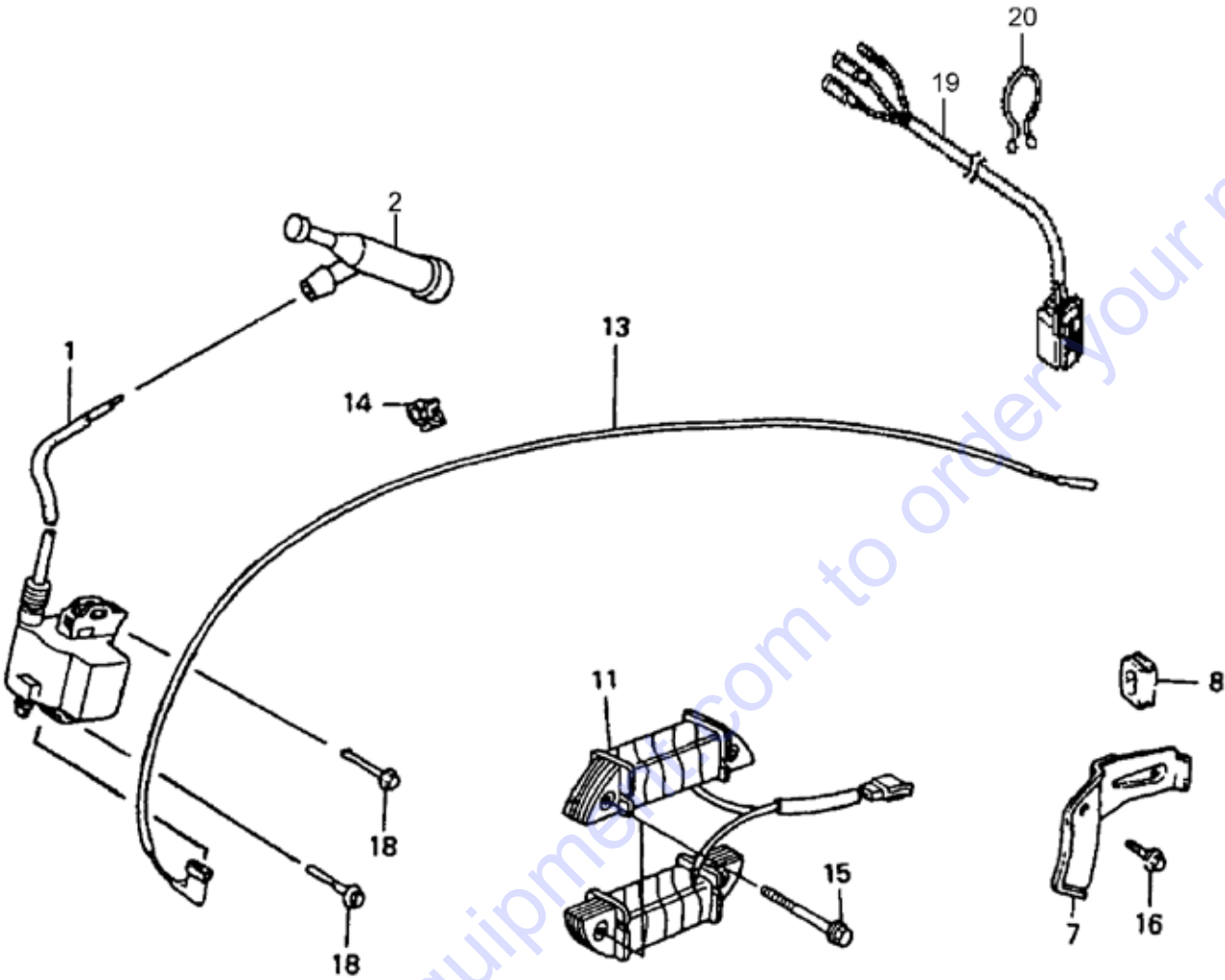
## HONDA GX390 SERIES ENGINE — FLYWHEEL ASSY.

<u>NO.</u>	<u>PART NO.</u>	<u>PART NAME</u>	<u>QTY.</u>	<u>REMARKS</u>
1	19511ZE3000	FAN, COOLING	1	
4◇❖	28451ZE3W01	PULLEY, STARTER	1	
4♣	28450ZE3W11	PULLEY, STARTER	1	
5◇♣	31100ZE3W01	FLYWHEEL COMP.	1	
5❖	31110Z5T840	FLYWHEEL COMP.	1	
9	90201ZE3V00	NUT, SPECIAL 16MM	1	
10	90741ZE2000	KEY, SPECIAL WOODRUFF 25X18	1	

### NOTICE

- ◇ Honda GX390K1SM32
- ♣ Honda GX390U1SM32
- ❖ Honda GX390UT2SM32
- ◆ Honda GX390UT2SCM1

# HONDA GX390 SERIES ENGINE — IGNITION COIL ASSY.



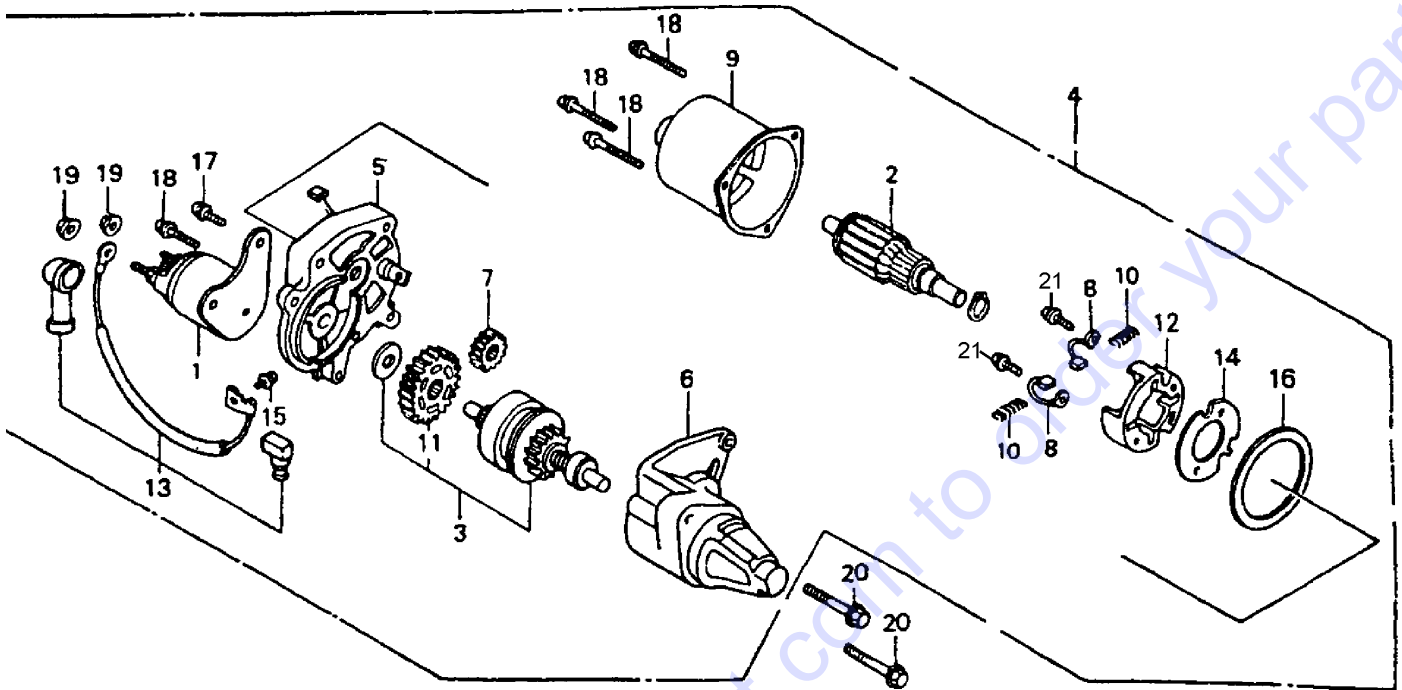
## HONDA GX390 SERIES ENGINE — IGNITION COIL ASSY.

NO.	PART NO.	PART NAME	QTY.	REMARKS
1◇♣	30500ZF6W03	COIL ASSY., IGNITION	1	
1❖◆	30500Z5T003	COIL ASSY., IGNITION	1	
2◇♣	30600ZE1013	SPARK PLUG CAP	1	
2❖	30600ZE1013	SPARK PLUG CAP	1	
2◆	30700-Z1C-813	SPARK PLUG CAP	1	
7	31511ZE3000	CLAMPER, CORD	1	
8	31512ZE2000	GROMMET, CORD	1	
11	31630ZE2861	COIL ASSY., CHARGE (10A)	1	
13◇♣	36101ZE2701	CORD, STOP SWITCH (430MM)	1	
14◇♣	36103ZE1000	HOLDER, STOP SWITCH CORD	1	
15	90012888000	FLANGE BOLT	4	
16	90013883000	FLANGE BOLT 6X12	1	
18	90015883000	FLANGE BOLT 6X28	2	
19	2110Z5T810	HARNESS ASSY., ENGINE WIRE	1	
19◆	32110-Z5K-810	HARNESS ASSY., ENGINE WIRE	1	
20	90630751000	CLIP, PURSE LOCK	1	

### NOTICE

- ◇ Honda GX390K1SM32
- ♣ Honda GX390U1SM32
- ❖ Honda GX390UT2SM32
- ◆ Honda GX390UT2SCM1

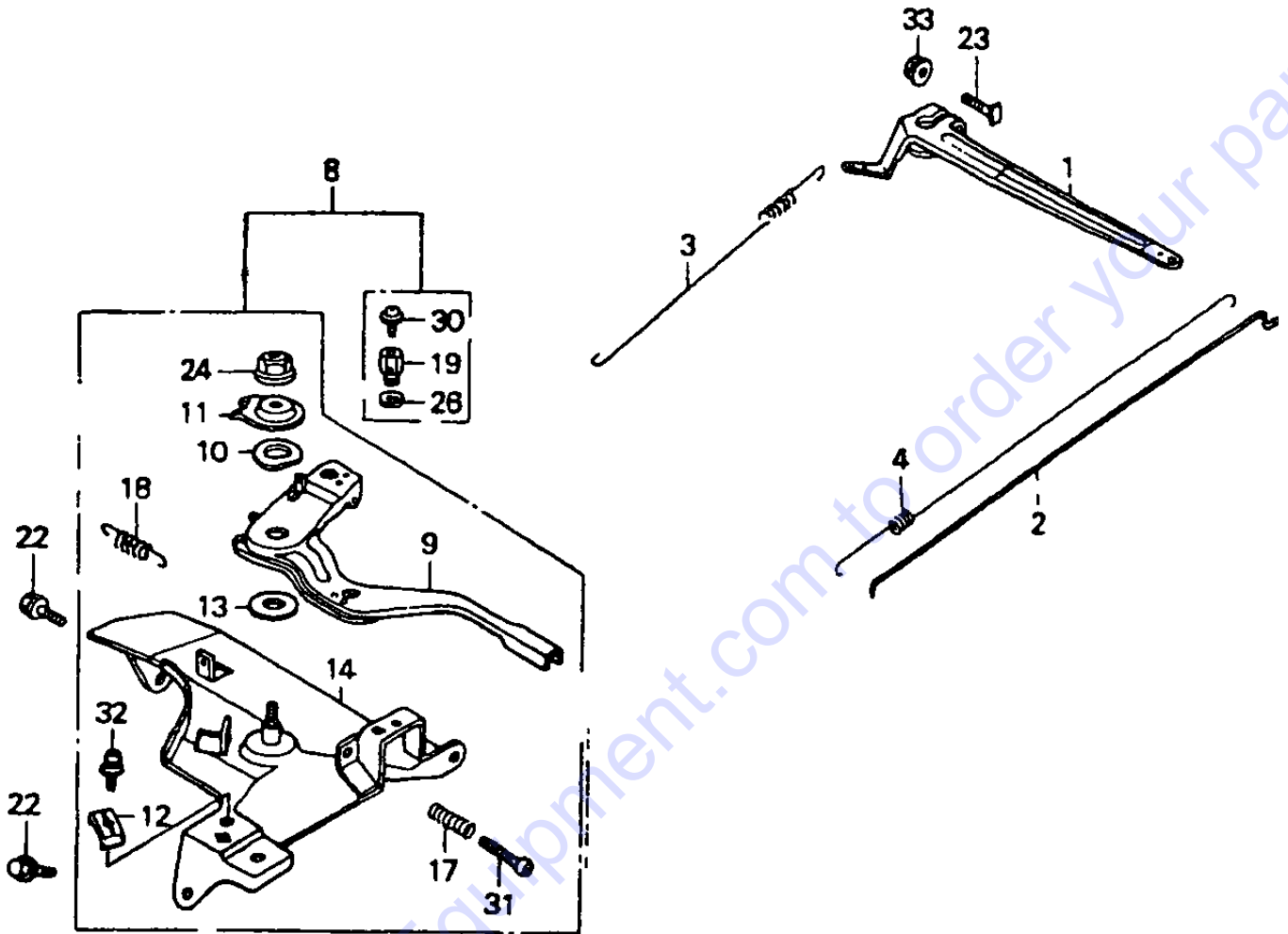
# HONDA GX390 SERIES ENGINE — STARTER MOTOR ASSY.



## HONDA GX390 SERIES ENGINE — STARTER MOTOR ASSY.

NO.	PART NO.	PART NAME	QTY.	REMARKS
1#	31204ZA0003	CONTACTOR ASSY.	1	
2#	31206ZE3003	ARMATURE COMP.	1	
3#	31207ZE3003	CLUTCH COMP., OVERRUN	1	
4	31210ZE3023	MOTOR UNIT, STARTER.....	1	INCLUDES ITEMS W/# REPLACES P/N 31210ZE3013
5#	31211ZE2003	BRACKET, CENTER	1	
6#	31212ZE3003	BRACKET, FRONT	1	
7#	31213ZE2003	GEAR, DRIVE PINION	1	
8#	31215ZE2003	BRUSH	2	
9#	31218ZE3003	YOKE COMP.	1	
10#	31219ZE2003	SPRING, BRUSH RETURN	4	
11#	31222ZE3791	GEAR, REDUCTION	1	
12#	31231ZE2003	HOLDER, BRUSH	1	
13#	31232ZE3003	WIRE, WATER COVER	1	
14#	31233ZE2003	INSULATOR	1	
15#	90110ZE2003	SCREW-WASHER 4X6	1	
16#	91601ZE2003	PACKING	1	
17#	90007ZE2003	BOLT, WASHER 5X14	2	
18#	938920503208	SCREW-WASHER 5X32 .....	4	REPLACES P/N 938920503218
19#	9407006080	NUT-WASHER 6MM	2	
20	957010803508	FLANGE BOLT 8X35	2	
21#	31219ZE3003	SCREW, WASHER, 4X14	2	

# HONDA GX390 SERIES ENGINE — CONTROL ASSY.



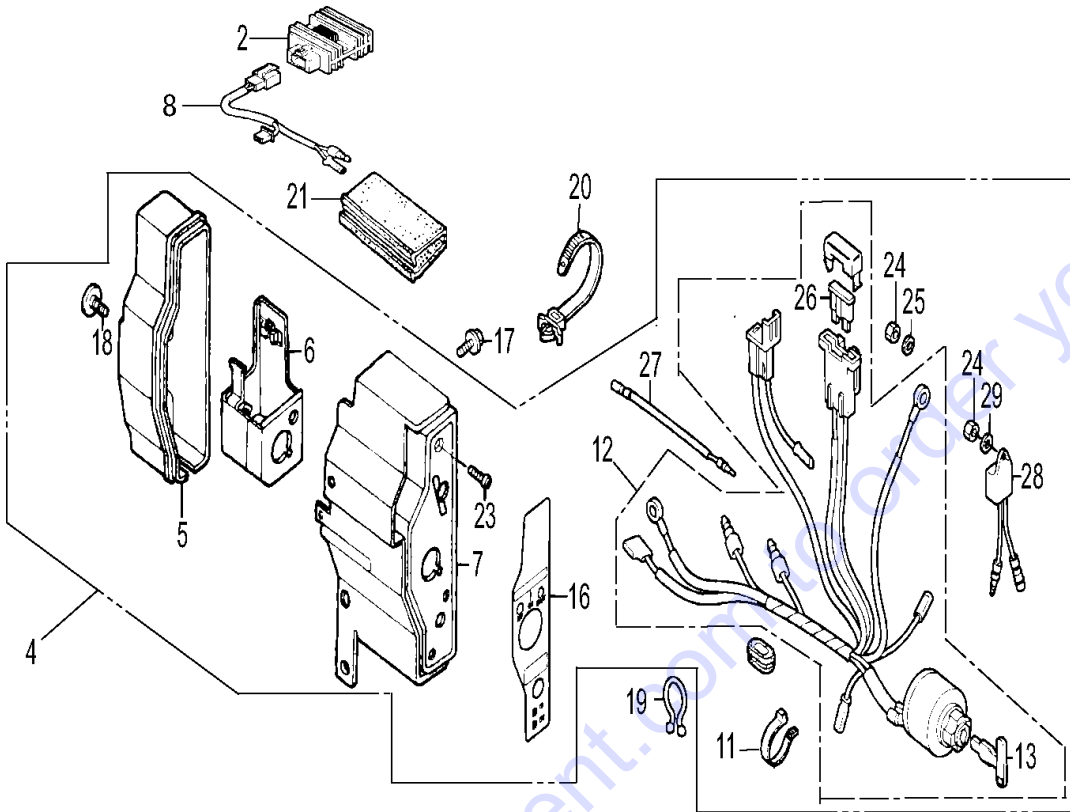
## HONDA GX390 SERIES ENGINE — CONTROL ASSY.

NO.	PART NO.	PART NAME	QTY.	REMARKS
1	16551ZE3000	ARM, GOVERNOR	1	
2	16555ZE3000	ROD, GOVERNOR	1	
3	16561ZE3000	SPRING, GOVERNOR	1	
4	16562ZE3000	SPRING, THROTTLE RETURN	1	
8◇♣	16570ZE3W10	CONTROL ASSY. (REMOTE).....	1	INCLUDES ITEMS W/#
8❖	16500Z5T306	CONTROL ASSY. (REMOTE).....	1	INCLUDES ITEMS W/%
8◆	16500-Z5T-800	CONTROL ASSY. (REMOTE).....	1	INCLUDES ITEMS W/\$
9#%\$	16571ZE3W00	LEVER, CONTROL	1	
10#%\$	16574ZE1000	LEVER SPRING	1	
11#%\$	16575ZE2W00	WASHER, CONTROL LEVER	1	
12#%\$	16576891000	HOLDER, CABLE	1	
13#%\$	16578ZE1000	SPACER, CONTROL LEVER	1	
14#	16581ZE3W00	BASE COMP., CONTROL	1	
14%\$	16580Z5T000	BASE COMP., CONTROL	1	
17#%\$	16584883300	ADJUSTING SPRING	1	
18#%\$	16592883310	SPRING, CABLE RETURN	1	
19#%\$	16594883010	WIRE HOLDER	1	
22	90013883000	FLANGE BOLT 6X12	2	
23◇♣	90015ZE5010	BOLT, GOVERNOR ARM	1	
23❖◆	90015Z5T000	BOLT, GOVERNOR ARM	1	
24#%\$	90114SA0000	LOCK NUT 6MM	1	
26#%\$	90605230000	CIR CLIP 5MM	1	
30#%\$	0043504060	SCREW 4X6.....	1	REPLACES P/N 93500040060H
31#%\$	93500050320A	PAN SCREW 5X32	1	
32#%\$	0202005T125	SCREW 5X16.....	1	REPLACES P/N 93500050160A
33	9405006000	FLANGE NUT 6MM	1	

### NOTICE

- ◇ Honda GX390K1SM32
- ♣ Honda GX390U1SM32
- ❖ Honda GX390UT2SM32
- ◆ Honda GX390UT2SCM1

# HONDA GX390 SERIES ENGINE — CONTROL BOX ASSY.





# HONDA GX390 SERIES ENGINE — CONTROL BOX ASSY.

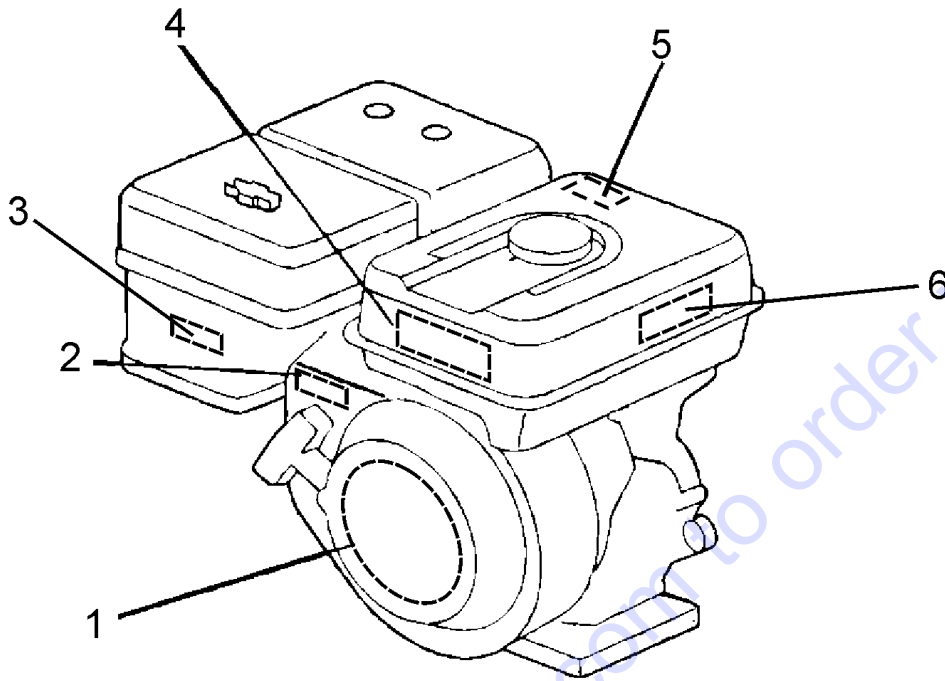
NO.	PART NO.	PART NAME	QTY.	REMARKS
2	31600ZE2861	REGULATOR ASSY., RECTIFIER	1	
4◇	31610ZE3W33ZA	BOX ASSY., CONTROL, NH1 (BLACK) .....	1	INCLUDES ITEMS W/#
4♣	31610Z5S821ZB	BOX ASSY., CONTROL, R280 (RED) .....	1	INCLUDES ITEMS W/%
4❖	31610Z5T831ZA	BOX ASSY., CONTROL, NH1 (BLACK) .....	1	INCLUDES ITEMS W/\$
4◆	31610Z5T831ZA	BOX ASSY., CONTROL, NH1 (BLACK) .....	1	INCLUDES ITEMS W/&
5#%\$	31612ZE2003	CASE, CONTROL	1	
6#%\$	31614ZE2003	BRACKET, CASE MOUNTING	1	
7#%\$	31615ZE3003ZE	PANEL COMP., CONTROL, R280 (RED)	1	
7&	31615ZE3003ZA	PANEL COMP., CONTROL, (BLACK)	1	
8	32110ZE2860	HARNESS ASSY. SUB WIRE	1	
11#%\$&	32902892003	BAND	1	
12#%	35100ZE2862	SW. ASSY., COMBINATION .....	1	INCLUDES ITEMS 13 AND 26
12\$&	35100Z5T831	SW. ASSY., COMBINATION .....	1	INCLUDES ITEMS 13 AND 26
13#%\$&	35111880013	KEY COMP.....	2	REPLACES P/N 35111880003
16#	887529ZE2860	MARK, CONTROL BOX (	1	
16%	87529Z4T840	MARK, CONTROL BOX	1	
16\$&	87529Z4S820	MARK, CONTROL BOX	1	
17	90013883000	FLANGE BOLT 6X12	2	
18	90380MA6010	SCREW, SPECIAL 6X12	1	
19	90630751000	CLIP, PURSE LOCK	1	
20	90672SA0003	STRAP, CABLE 118MM	1	
21	91406ZE2003	TUBE, FASTENER 30MM	1	
23#%\$&	93500040120H	PAN SCREW 4X12	1	
24#%\$&	94001043900S	NUT, HEX. 4MM	1	
25#%\$&	9411104800	WASHER, LOCK 4MM	1	
26#%\$&	9820031500	FUSE, BLADE (15A)	1	
27#%\$	32197ZE1003	SUB HARNESS .....	1	NOT USED ON ◆ ENGINE
28#%\$	34150ZH7003	ALERT UNIT, OIL .....	1	NOT USED ON ❖ ◆ ENGINES
29#%\$	9410104800	WASHER, FLAT 4MM.....	1	NOT USED ON ◆ ENGINE

## NOTICE

- ◇ Honda GX390K1SM32
- ♣ Honda GX390U1SM32
- ❖ Honda GX390UT2SM32
- ◆ Honda GX390UT2SCM1

# HONDA GX390 SERIES ENGINE — LABEL ASSY.

---



Go to Discount-Equipment.com to order your parts

## HONDA GX390 SERIES ENGINE — LABEL ASSY.

<u>NO.</u>	<u>PART NO.</u>	<u>PART NAME</u>	<u>QTY.</u>	<u>REMARKS</u>
1◇	87521ZF6W01	EMBLEM	1	
1♣	87521ZF6W04	EMBLEM	1	
1❖◆	87521Z5T000	EMBLEM	1	
2	87532ZH7000	MARK, THROTTLE INDICATION	1	
3◇	87528ZE2810	MARK, CHOKE (ORANGE)	1	
3❖	87528Z5T000	MARK, CHOKE	1	
3◆	87528Z4M000	MARK, CHOKE	1	
4◇	87522ZH9010	LABEL, OPERATOR CAUTION	1	
4♣	87516ZH7010	LABEL, OPERATOR CAUTION	1	
4❖	87519Z4H000	LABEL, OPERATOR CAUTION	1	
4◆	8751-Z4H000	LABEL, OPERATOR CAUTION	1	
5♣	87539Z0J000	MARK, EX, CAUTION (ENGLISH)	1	
6◇	87532ZH8810	MARK, OIL ALERT	1	

### NOTICE

- ◇ Honda GX390K1SM32
- ♣ Honda GX390U1SM32
- ❖ Honda GX390UT2SM32
- ◆ Honda GX390UT2SCM1

# PARTS FINDER

**Search Website  
by Part Number**



**Search Manual  
Library For Parts  
Manual & Lookup Part  
Numbers – Purchase  
or Request Quote**

**Search Manuals**

Enter your information to search for a manual or to purchase a manual or parts.

\* Brand:

\* Model:

\* Serial:

\* Part Number:

SEARCH

**Can't Find Part or  
Manual? Request Help  
by Manufacturer,  
Model & Description**

**Parts Order Form**

Please fill in the following information to request help finding a part or manual.

Manufacturer:

Model:

Description:

Quantity:

Part Number:

Part Name:

Part Description:

Part Category:

Part Location:

Part Status:

Part Condition:

Part Material:

Part Color:

Part Weight:

Part Dimensions:

Part Price:

Part Availability:

Part Lead Time:

Part Notes:

Submit

Discount-Equipment.com is your online resource for quality parts & equipment.

Florida: **561-964-4949** Outside Florida TOLL FREE: **877-690-3101**

**Need parts?**

Click on this link: <http://www.discount-equipment.com/category/5443-parts/> and choose one of the options to help get the right parts and equipment you are looking for. Please have the machine model and serial number available in order to help us get you the correct parts. If you don't find the part on the website or on one of the online manuals, please fill out the request form and one of our experienced staff members will get back to you with a quote for the right part that your machine needs.

We sell worldwide for the brands: Genie, Terex, JLG, MultiQuip, Mikasa, Essick, Whiteman, Mayco, Toro Stone, Diamond Products, Generac Magnum, Airman, Haulotte, Barreto, Power Blanket, Nifty Lift, Atlas Copco, Chicago Pneumatic, Allmand, Miller Curber, Skyjack, Lull, Skytrak, Tsurumi, Husquvarna Target, Stow, Wacker, Sakai, Mi-T-M, Sullair, Basic, Dynapac, MBW, Weber, Bartell, Bennar Newman, Haulotte, Ditch Runner, Menegotti, Morrison, Contec, Buddy, Crown, Edco, Wyco, Bomag, Laymor, EZ Trench, Bil-Jax, F.S. Curtis, Gehl Pavers, Heli, Honda, ICS/PowerGrit, IHI, Partner, Imer, Clipper, MMD, Koshin, Rice, CH&E, General Equipment, Amida, Coleman, NAC, Gradall, Square Shooter, Kent, Stanley, Tamco, Toku, Hatz, Kohler, Robin, Wisconsin, Northrock, Oztec, Toker TK, Rol-Air, APT, Wylie, Ingersoll Rand / Doosan, Innovatech, Con X, Ammann, Mecalac, Makinex, Smith Surface Prep, Small Line, Wanco, Yanmar