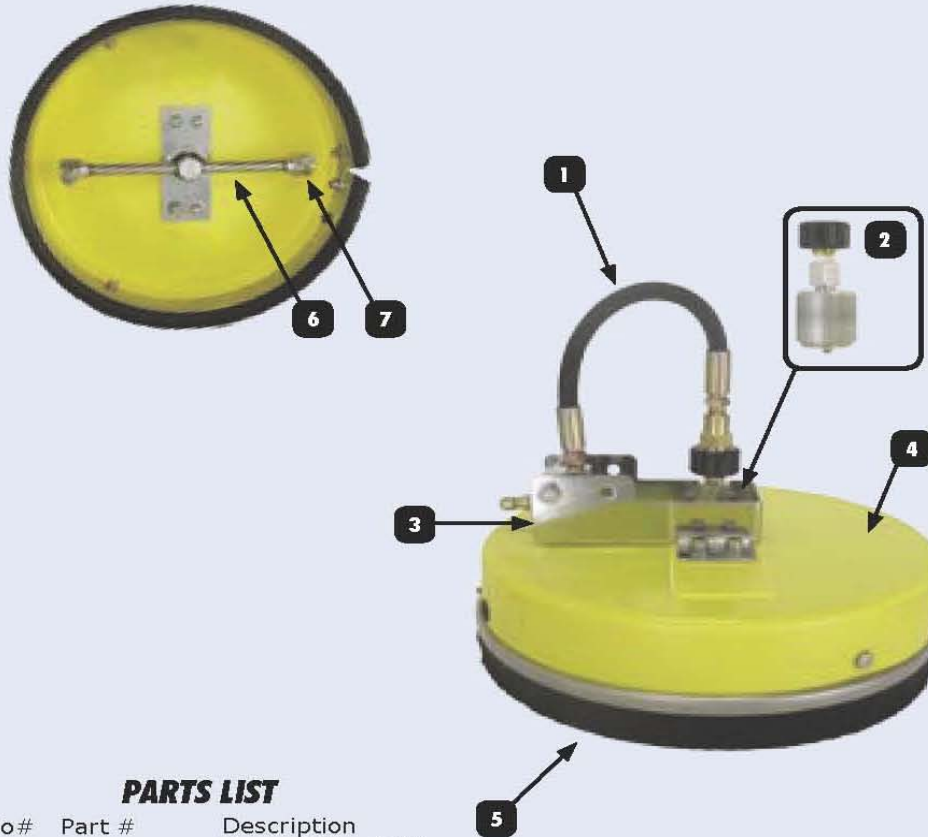


# BE-1200WAWY BREAKDOWN

## **BE-1200WAW**



### **PARTS LIST**

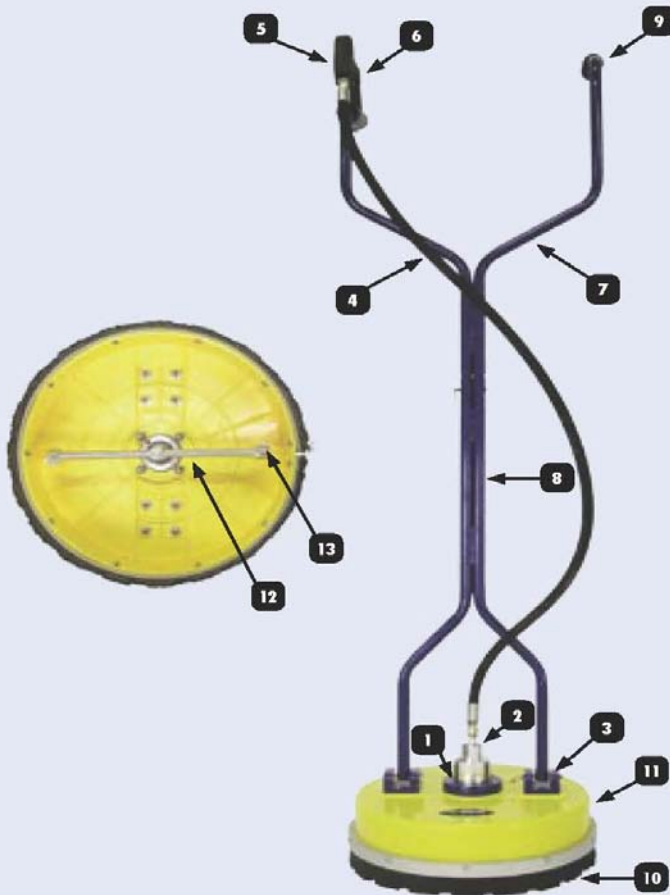
No#	Part #	Description
1	85.214.012	Hose, 12" x 1/4"
2	85.790.021	Rotary Head, 12"
3	85.791.015	Mounting Bracket
4	85.419.012	Cover, ABS Nylon Material 12"
5	85.790.024	Nylon Brush Skirt, 12"
6	85.791.016	Rotary Arm
7	85.215.020	Nozzle, 15 Deg. 020

### **ROTART HEAD REPAIR PARTS**

No#	Part #	Description
1	85.790.023	Viton O-ring for Rotary Head
2	85.790.022	Rotary Head Repair Kit

# BE-1600WAW & BE-2000WAWY BREAKDOWN

## **BE-1600WAW BE-2000WAWY**



### **BE-1600WAW**

No#	Part #	Description
1	85.791.003	Bracket, Mounting Head 16" & 20"
2	85.790.004	Rotary Head, 16"
3	85.419.116	Mounting Blocks
4	85.238.057	Hose, 62" x 3/8"
5	85.202.017	Spray Gun
6	85.300.105	Plug, 3/8" MNPT
7	85.419.044	Handle, Upper 16"
8	85.419.042	Handle, Lower 16"
9	85.602.005	Hand Grip
10	85.790.012	Brush Skirt, 16"
11	85.419.021	Cover, Polypropylene 16"
12	85.791.009	Rotary Arm, For 16"
13	85.225.025	Nozzle, 25 Deg. 025

### **BE-2000WAWY**

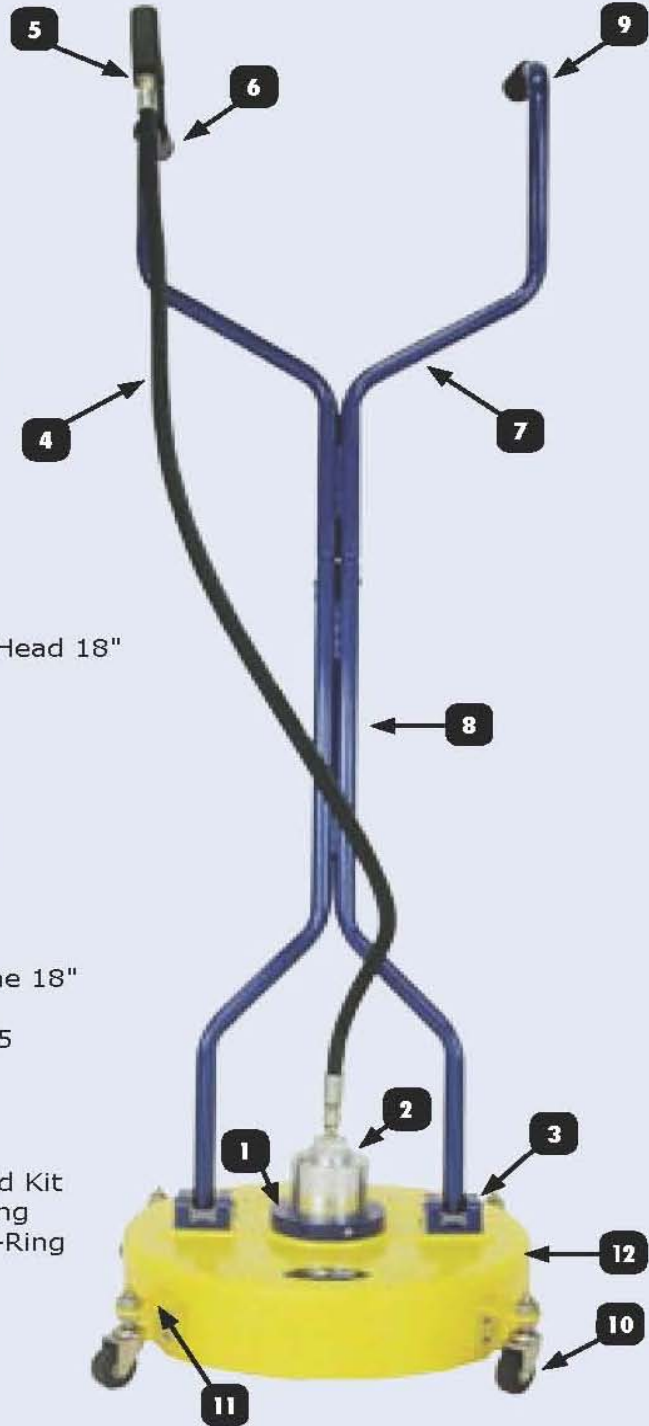
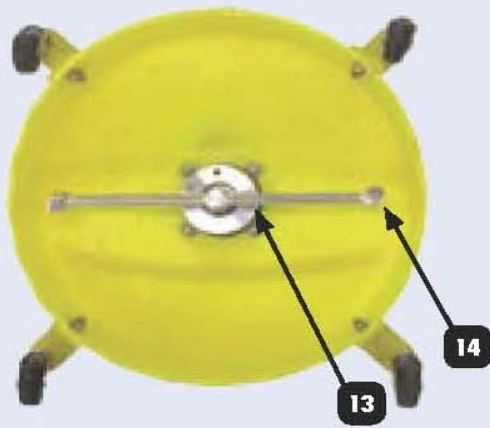
No#	Part #	Description
1	85.791.003	Bracket, Mounting Head 16" & 20"
2	85.790.004	Rotary Head, 20"
3	85.419.116	Mounting Blocks
4	85.238.057	Hose, 62" x 3/8"
5	85.202.115	Spray Gun
6	85.300.105	Plug, 3/8" MNPT
7	85.419.033	Handle, Upper 20"
8	85.419.032	Handle, Lower 20"
9	85.602.005	Hand Grip
10	85.790.013	Brush Skirt, 20"
11	85.419.020Y	Cover, Polypropylene 20"
12	85.791.013	Rotary Arm, 20"
13	85.225.025	Nozzle, 25 Deg. 025

### **ROTARY HEAD REPAIR PARTS**

No#	Part #	Description
1	85.790.010	Rotary Head Rebuild Kit
2	85.790.001	Inlet Valve w/ O-Ring
3	85.790.002	Inlet Valve Viton O-Ring
4	85.790.011	Outlet Shaft

# BE-1800WAWY BREAKDOWN

## BE-1800WAW



### PARTS LIST

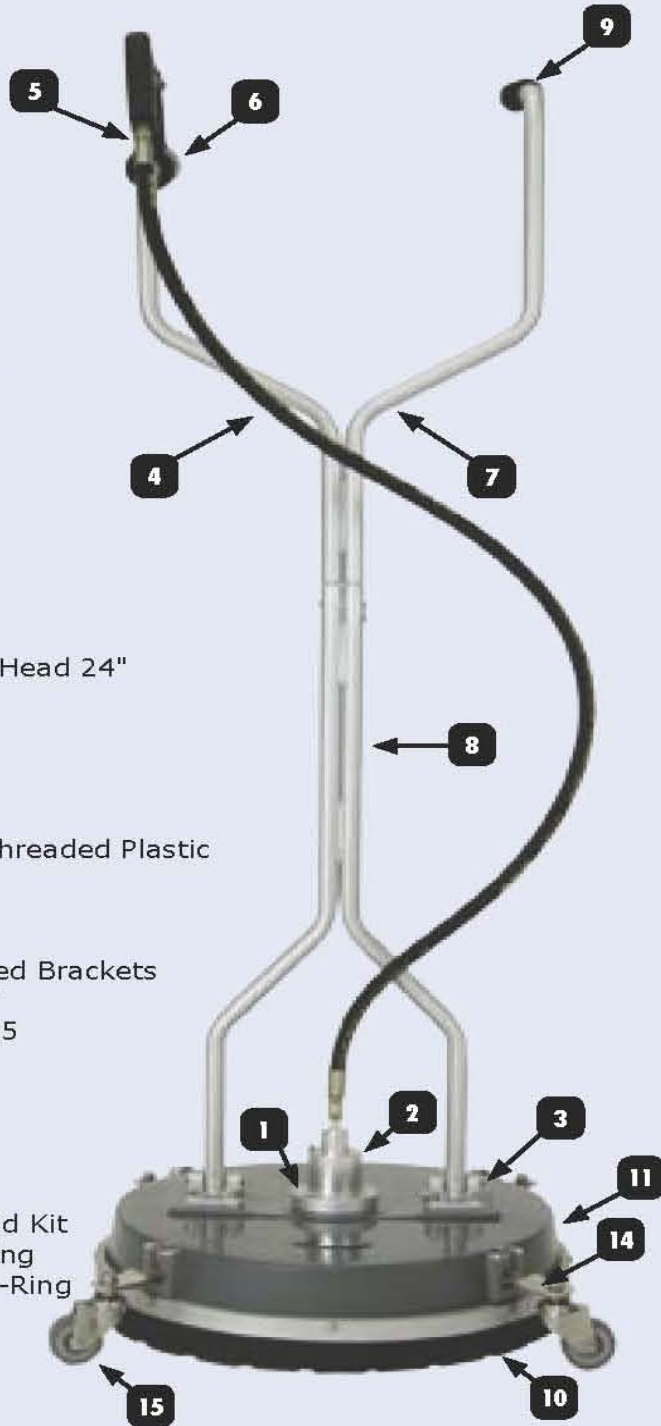
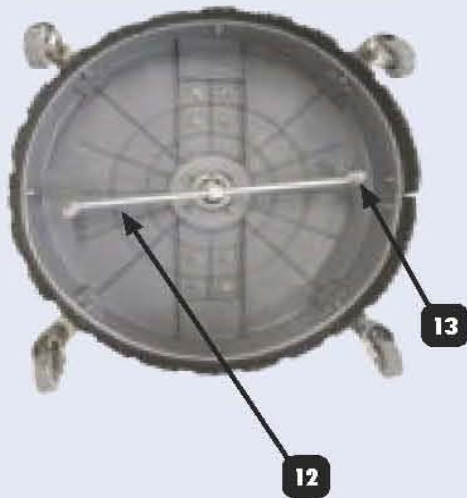
No#	Part #	Description
1	85.791.001	Bracket, Mounting Head 18"
2	85.790.006	Rotary Head, 18"
3	85.419.116	Mounting Blocks
4	85.238.057	Hose, 62" x 3/8"
5	85.202.115	Spray Gun
6	85.300.105	Plug, 3/8" NPTM
7	85.419.041	Handle, Upper 18"
8	85.419.040	Handle, Lower 18"
9	85.602.005	Hand Grip
10	85.790.007	Castor Wheel
11	85.419.023	Castor Bracket
12	85.419.019	Cover, Polypropylene 18"
13	85.791.007	Rotary Arm
14	85.225.025	Nozzle, 25 Deg. 025

### ROTART HEAD REPAIR PARTS

No#	Part #	Description
1	85.790.010	Rotary Head Rebuild Kit
2	85.790.001	Inlet Valve w/ O-Ring
3	85.790.002	Inlet Valve Viton O-Ring
4	85.790.011	Outlet Shaft

# BE-2200WAWG BREAKDOWN

## **BE-2200WAWG**



### **PARTS LIST**

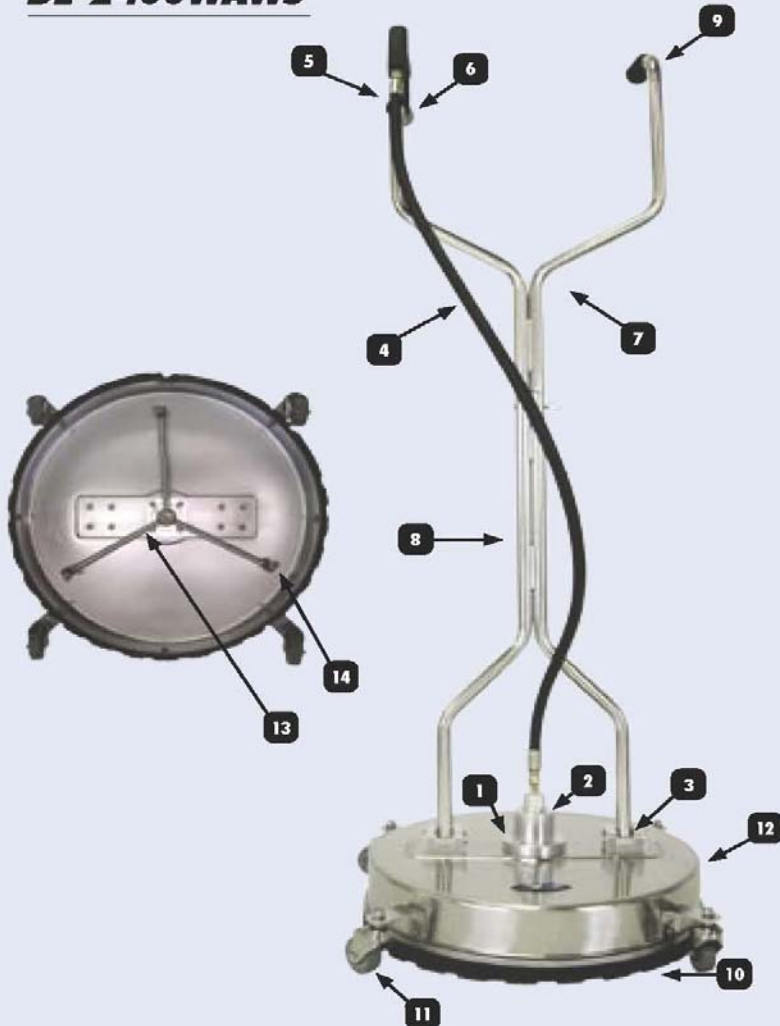
No#	Part #	Description
1	85.791.002	Bracket, Mounting Head 24"
2	85.790.004	Rotary Head, 20"
3	85.419.119	Mounting Block
4	85.238.057	Hose, 62" x 3/8"
5	85.202.116	Spray Gun
6	85.300.105	Plug, 3/8" MNPT
7	85.419.038	Upper Handle w/ Threaded Plastic
8	85.419.039	Lower Handle
9	85.602.005	Hand Grip
10	85.790.026	Nylon Brush
11	85.419.013	22" Cover w/ Molded Brackets
12	85.791.029	Rotary Arm for 22"
13	85.225.025	Nozzle, 25 Deg. 025
14	85.419.045	Castor Bracket
15	85.790.009	Castor

### **ROTARY HEAD REPAIR PARTS**

No#	Part #	Description
1	85.790.010	Rotary Head Rebuild Kit
2	85.790.001	Inlet Valve w/ O-Ring
3	85.790.002	Inlet Valve Viton O-Ring
4	85.790.011	Outlet Shaft

# BE-2000WAWS & BE-2400WAWS BREAKDOWN

## **BE-2000WAWS BE-2400WAWS**



### **BE-2000WAWS**

No#	Part #	Description
1	85.791.002	Bracket, Mounting Head 20"
2	85.790.004	Rotary Head, 20"
3	85.419.117	Mounting Blocks
4	85.238.057	Hose, 62" x 3/8"
5	85.202.115	Spray Gun
6	85.300.105S	Plug, 3/8" MNPT SS
7	85.419.036	Handle, Upper 20"
8	85.419.035	Handle, Lower 20"
9	85.602.005	Hand Grip
10	85.790.014S	Brush Skirt, 20" Stainless Steel
11	85.790.009	Castor Wheel
12	85.419.020S	Cover, Stainless Steel 20"
13	85.791.012	Rotary Arm, 3-Way
14	85.225.020	Nozzle, 25 Deg. 020

### **BE-2400WAWS**

No#	Part #	Description
1	85.791.002	Bracket, Mounting Head 24"
2	85.790.004	Rotary Head, 24"
3	85.419.117	Mounting Blocks
4	85.238.057	Hose, 62" x 3/8"
5	85.202.115	Spray Gun
6	85.300.105S	Plug, 3/8" MNPT SS
7	85.419.036	Handle, Upper 24"
8	85.419.035	Handle, Lower 24"
9	85.602.005	Hand Grip
10	85.790.019S	Brush Skirt, 24"
11	85.790.020	Castor Wheel
12	85.419.024S	Cover, Stainless Steel 24"
13	85.791.010S	Rotary Arm, 24"
14	85.225.020	Nozzle, 25 Deg. 020

### **ROTARY HEAD REPAIR PARTS**

No#	Part #	Description
1	85.790.010	Rotary Head Rebuild Kit
2	85.790.001	Inlet Valve
3	85.790.002	Inlet Valve Viton O-Ring
4	85.790.011	Outlet Shaft