

Parts List  
for Portable Generators  
English

CPG 90-120 JD

Engine 4045Jd



# CPG 90-120 Jd

Engine 4045Jd

Parts Index.....	5
Warranty and Liability .....	7
Safety Precautions for Portable Generators .....	9
Ordering Spare Parts .....	8
Parts Lists .....	13



# PARTS INDEX

<b>PART</b>	<b>PAGE</b>	<b>PART</b>	<b>PAGE</b>	<b>PART</b>	<b>PAGE</b>
<b>A</b>					
ACTUATOR.....	36	COVER.....	40, 42	FRONT ROOF ASSEMBLY.....	26, 46
ADAPTER.....	35	COVER CANOPY.....	26	FUEL HOSE.....	17
AIR FILTER.....	20	COVER-DRAIN.....	44	FUEL LEVEL SENSOR.....	17
AIR FILTER BRACKET.....	20	CP LOGO.....	49, 52, 55	FUEL SYSTEM.....	17
AIR INLET.....	20	CUBICLE ASSEMBLY.....	22, 23, 40, 41, 42, 43	FUEL TANK.....	44
ALTERNATOR.....	24, 25	CUBICLE.....	40, 42	FUEL TUBE INLET/OUTLET.....	17
ALTERNATOR ASSEMBLY.....	24, 25	CUBICLE DOOR ASSEMBLY.....	26, 50, 51	FUELCAP.....	17
AMMETER.....	45	CURRENT TRANSFORMER.....	40, 42	FUSE.....	40, 42
AXEL ASSEMBLY.....	36, 38	<b>D</b>			
<b>B</b>					
BALL VALVE.....	35	DATA PLATE.....	24, 25	GAUGE.....	20
BARRIER.....	40, 42	DOCUMENT HOLDER.....	26	GROMMET.....	36, 38
BATTERY.....	21, 38	DOOR.....	58, 40, 42	GENOIL.....	14
BATTERY BOX.....	38	DOOR PLEXIGLASS.....	40, 42	GENCOOL EG.....	15
BATTERY CABLE.....	21	DOOR-LARGE ASSEMBLY.....	26, 49	<b>H</b>	
BATTERY CLAMP.....	21	<b>E</b>			
BODYWORK.....	26, 27	EARTH RAIL ASSEMBLY.....	40, 42	HANDLE.....	49, 50, 55, 58
BRACKET CUBICLE.....	40, 42	ELECTRICAL SYSTEM.....	21	HINGE.....	48, 49, 50, 53, 54, 55, 57, 58
BRACKET CUBICLE TO ROOF.....	26	EMERGENCY STOP.....	40, 42	HOSE.....	18
BRACKET LIFTING SUPPORT.....	26	ENGINE.....	16	HOSE AIR INLET.....	20
BRAKE ASSEMBLY.....	36, 38	ENGINE COOLANT.....	15	HOSE ASSEMBLY ENGINE OIL DRAIN.....	35
BREAKAWAY SWITCH.....	38	ENGINE OIL.....	14	HOSE CAC.....	18
BUSBAR.....	40, 42	EXHAUST.....	28, 29	HOSE CLAMP.....	17, 18, 20
<b>C</b>					
CABLE CLAMP.....	21	EXHAUST CLAMP.....	28	HOSE CLAMP ENGINE INLET/TURBO.....	18
CABLE GLAND.....	40, 42, 45	EXHAUST HOSE.....	28	HOSE FLEX METAL.....	28
CABLE TY.....	21	EXHAUST PIPE.....	28	HOUSE MARK.....	50
CIRCUIT BREAKER.....	40, 42, 45	<b>F</b>			
CONNECTOR CAC.....	18	FAN.....	18	HOUSING.....	40, 42
CONTACT AUXILIARY.....	40, 42	FAN BOX.....	18	HUMP HOSE.....	20
CONTACT BLOCK.....	40, 42	FAN GUARD.....	18	<b>I</b>	
CONTACT MALE.....	45	FAN GUARD PULLEY.....	18	INSERT MALE.....	45
CONTACTOR.....	40, 42	FAN SPACER.....	18	INSULATION.....	48, 49, 52, 53, 57, 58
CONTROL PANEL.....	45	FOAM REAR PANEL.....	56	INSULATION CORNER PANEL.....	54
CONTROL PANEL ASSEMBLY.....	40, 42, 45	FRAME.....	44	INSULATION DOOR.....	55
CONTROLLER.....	45	FRAME AND MOUNTS.....	34	INSULATION ROOF.....	46, 47
COOLANT PIPE UPPER.....	18	FRAME TANK ASSEMBLY.....	26, 44	ISOLATER.....	40, 42
COOLING SYSTEM.....	18, 19	FRONT CORNER ASSEMBLY.....	26, 54, 57	<b>J</b>	
CORNER PANEL.....	57	FRONT PANEL.....	52	JACK TONGUE.....	36, 38
		FRONT PANEL ASSEMBLY.....	26, 52		

# PARTS INDEX

<b>PART</b>	<b>PAGE</b>	<b>PART</b>	<b>PAGE</b>	<b>PART</b>	<b>PAGE</b>
<b>K</b>		<b>P</b>		SIDE PANEL ASSEMBLY ..... 26, 48	
KEY ..... 26		PANEL ALTERNATOR ..... 24, 25		SIDE SUPPORT ..... 26	
KIT COOLANT RECOVERY SYSTEM ..... 18		PANEL CORNER ..... 54		SOCKET ..... 45	
<b>L</b>		PANEL CUBICLE DOOR ..... 40, 42		SPACER ..... 26	
LABEL ..... 30, 32, 40, 42		PANEL EXHAUST ..... 28		STRIP ..... 40, 42	
LABEL AC INTERNET ADDRESS ..... 56		PANEL LIGHT ..... 45		SUPPORT CAC BRACKET ..... 18	
LABEL CALIFORNIA EMISSIONS ..... 30, 32		PANEL ROOF REAR ..... 47		SUPPORT CIRCUIT BREAKER ..... 40, 42	
LABEL CAUTION HOT EXHAUST ..... 30, 32		PIPE AIR INLET ..... 20		SUPPORT COOLER ..... 18, 26	
LABEL CP INTERNET ADDRESS ..... 52		PLATE ..... 40, 42, 44, 45		SUPPORT CROSS RAIL ..... 34	
LABEL GENUINE PARTS ..... 30, 32		PLATE ALTERNATOR ..... 24		SWITCH ..... 40, 42, 45	
LABEL HIGH VOLTAGE ..... 22, 23		PLATE ALTERNATOR MOUNT ..... 25		SWITCH-SELECTOR ..... 24, 25	
LABEL INFORMATION ..... 40, 42		PLATE ALTERNATOR SWITCH ..... 24, 25			
LABEL LOGO ..... 52, 56		PLATE LIFTING BEAM ..... 26		<b>T</b>	
LABEL MODEL DESIGNATION ..... 24, 25		PLATE HEAT DEFLECTOR ..... 28		TERMINAL ..... 45	
LABEL NEUTRAL GROUNDED ..... 30, 32		PLUG ..... 35, 40, 42, 44, 45		TERMINAL BOARD ..... 40, 42	
LABEL OPERATING INSTRUCTION ..... 30, 50		POTMETER ..... 45		TRAILER ASSEMBLY ..... 36, 37, 38, 39	
LABEL CPG RELAY FUNCTION ..... 30, 32		PROTECTION ..... 40, 42		TRANSFORMER ..... 40, 42	
LABEL OPERATING ..... 50				TOWING EYE ..... 36, 38	
LABEL OPERATING INSTRUCTION ..... 50		<b>R</b>		TUBE WALL ..... 18	
LABEL SELECTOR SWITCH POSITION ..... 24, 25		RADIATOR ..... 18		<b>U</b>	
LABEL SELECTOR SWITCH VOLTAGES ..... 24, 25, 30, 32		RAIL DIN MOUNTING ..... 40, 42		UPPER PIPE CAC ..... 18	
LABEL WARNING ..... 30, 32		RAIN CAP ..... 28		<b>V</b>	
LABEL WARNING ALTERNATOR ..... 30, 32		RAIN GUARD CUBICAL ..... 26		VALVE ..... 18	
LAMP ..... 45		REAR PANEL ASSEMBLY ..... 26, 56		VENT FRONT DOOR ..... 26, 55	
LAMP LICENSE PLATE ..... 36, 38		REAR PANEL ..... 53, 56		VENT REAR DOOR ..... 26, 58, 59	
LOCK ..... 45		REAR ROOF ASSEMBLY ..... 26, 47		VIBRATION MOUNT ..... 34	
LOWER HOSE RADIATOR ..... 18		RECEPTACLE ..... 40, 42		VOLTMETER ..... 45	
LOWER PIPE CAC ..... 18		RED LIGHT ..... 36, 38		<b>W</b>	
		RELAY ..... 20, 40, 42, 45		WARNING LABEL ..... 40, 42	
		RELAY BASE ..... 40, 42		WHEEL-TIRE ASSY ..... 36, 38	
		ROOF PANEL ..... 46		WINDOW ..... 50	
		RUBBER BUFFER ..... 34		WIRE SET ..... 24, 25	
				WIRING HARNESS ..... 21	
<b>M</b>		<b>S</b>		<b>Y</b>	
MARKINGS ..... 30, 31, 32, 33		SAFETY CHAIN ..... 36, 38		YELLOW LIGHT ..... 36, 38	
MOUNT CUBICLE ..... 44		SADDLE CLAMP ..... 28			
MOUNT-ENGINE ..... 34		SELECTOR SWITCH ..... 24, 45			
MUDFLAP ..... 36, 38		SERVICE PAK ..... 13			
MUFFLER ..... 28		SHIELD EXHAUST ..... 28			
		SHIELD HEAT EXHAUST ..... 28			
		SHUNT TRIP ..... 40, 42			
		SIDE PANEL ..... 48			
<b>O</b>					
OIL SYSTEM ..... 35					
O-RING ..... 35					

# INSTRUCTION MANUAL

## **Warranty and Liability Limitation**

Use only authorized parts.

Any damage or malfunction caused by the use of unauthorized parts is not covered by Warranty or Product Liability.

The manufacturer does not accept any liability for any damage arising for modifications, additions or conversions made without the manufacturer's approval in writing.

Copyright 2010, Chicago Pneumatic.

Any unauthorized use or copying of the contents or any part thereof is prohibited.

This applies in particular to trademarks, model denominations, part numbers and drawings

## **Limitation de garantie et de responsabilité**

Utiliser uniquement les pièces homologuées.

Tout dommage ou mauvais fonctionnement dû à l'utilisation de pièces non homologuées n'est pas couvert par la garantie ou la responsabilité des produits défectueux.

Le fabricant décline toute responsabilité en cas de dommage faisant suite à des modifications, des ajouts ou des conversions effectués sans l'accord écrit du fabricant.

Copyright 2010, Chicago Pneumatic.

Toute utilisation ou copie du contenu, ou d'une partie de celui-ci, non autorisée est interdite.

Cette interdiction s'applique en particulier aux marques de commerce, aux dénominations des modèles, aux numéros des pièces et aux schémas.

## **Limitación de garantía y responsabilidad**

Use sólo piezas autorizadas.

La garantía o responsabilidad del producto no cubre ningún daño o funcionamiento defectuoso provocado por el uso de piezas no autorizadas.

El fabricante no acepta ninguna responsabilidad por los daños provocados por modificaciones, adiciones o conversiones realizadas sin la aprobación por escrito del fabricante.

Derechos de reproducción 2010, Chicago Pneumatic.

Está prohibida toda utilización o reproducción total o parcial no autorizada de estos contenidos,

en especial de las marcas registradas, denominaciones de modelos, números de piezas y planos

## **ORDERING SPARE PARTS**

### **ORDERING SPARE PARTS**

Always quote the part number, the designation and the quantity of the parts required, as well as the type and the serial number of the machine.

### **EXPLANATION OF THE COLUMNS**

#### *REF : REFERENCE CODE*

Establishes the connection between a part in the list and a part in the illustration.

"-" means that the part is not shown in the illustration.

#### *PART NUMBER*

If no part number is given, the part cannot be obtained as a spare part. Parts marked with a dot are part of the assembly listed right above them.

#### *DESIGNATION*

Usually this is the name of the part. For standard parts, in addition to the name, a number of characteristics are given.

#### *QTY : QUANTITY*

Indicates the quantity of the part concerned. "AR" stands for "As Required".

### **COMMANDE DE PIÈCES DETACHEES**

Toujours indiquer le numéro de pièce, la désignation, la quantité désirée ainsi que le type et le numéro de série du groupe.

### **EXPLICATION DES INTITULES DES COLONNES**

#### *REF : CODE DE REFERENCE*

Réfère à la pièce détachée spécifiée dans la liste et sur l'illustration. "-" implique que la pièce n'est pas indiquée sur l'illustration.

#### *PART NUMBER : NUMERO DE PIECE DETACHEE*

Si le numéro n'est pas indiqué, la pièce n'est pas disponible en tant que pièce de rechange.

Les pièces indiquées par un point gras font partie de l'ensemble se trouvant au-dessus des pièces détachées correspondantes.

#### *DESIGNATION*

En général, le nom de la pièce. S'il s'agit de pièces standard, outre la désignation, un certain nombre de caractéristiques sont indiquées.

#### *QTY : QUANTITE*

Indique la quantité de la pièce détachée. "AR" indique "As required", c'est-à-dire la quantité à déterminer selon le cas.

### **PEDIDO DE PARTES**

Siempre comunicar el número de parte, la designación y la cantidad deseada así como el tipo y el número de serie de la máquina.

### **INFORMACIONES SOBRE LAS COLUMNAS**

#### *REF : CODIGO DE REFERENCIA*

Establece la conexión entre una parte en la lista y una parte en la ilustración.

"-" quiere decir que la parte no está ilustrada.

#### *PART NUMBER : NUMERO DE PARTE*

Si no se da ningún número, quiere decir que la parte no está disponible como parte de recambio.

Partes marcadas con un punto son partes del conjunto indicado más arriba.

#### *DESIGNATION : DESIGNACION*

Principalmente el nombre de la parte. En caso de partes estándares, el nombre es seguido por especificaciones.

#### *QTY : CANTIDAD*

Indica la cantidad de la parte correspondiente. La indicación "AR" significa "As Required" (como sea requerido).



# SAFETY PRECAUTIONS FOR PORTABLE GENERATORS

To be read attentively and acted accordingly before towing, lifting, operating, performing maintenance or repairing the generator

## 0.1 INTRODUCTION

The policy of Chicago Pneumatic is to provide the users of their equipment with safe, reliable and efficient products. Factors taken into account are among others:

- the intended and predictable future use of the products, and the environments in which they are expected to operate,
- applicable rules, codes and regulations,
- the expected useful product life, assuming proper service and maintenance,
- providing the manual with up-to-date information.

Before handling any product, take time to read the relevant instruction manual. Besides giving detailed operating instructions, it also gives specific information about safety, preventive maintenance, etc. Keep the manual always at the unit location, easy accessible to the operating personnel.

See also the safety precautions of the engine and possible other equipment, which are separately sent along or are mentioned on the equipment or parts of the unit.

These safety precautions are general and some statements will therefore not always apply to a particular unit.

Only people that have the right skills should be allowed to operate, adjust, perform maintenance or repair on Chicago Pneumatic equipment. It is the responsibility of management to appoint operators with the appropriate training and skill for each category of job.

### Skill level 1: Operator

An operator is trained in all aspects of operating the unit with the push-buttons, and is trained to know the safety aspects.

### Skill level 2: Mechanical technician

A mechanical technician is trained to operate the unit the same as the operator. In addition, the mechanical technician is also trained to perform maintenance and repair, as described in the instruction manual, and is allowed to change settings of the control and safety system. A mechanical technician does not work on live electrical components.

### Skill level 3: Electrical technician

An electrical technician is trained and has the same qualifications as both the operator and the mechanical technician. In addition, the electrical technician may carry out electrical repairs within the various enclosures of the unit. This includes work on live electrical components.

### Skill level 4: Specialist from the manufacturer

This is a skilled specialist sent by the manufacturer or its agent to perform complex repairs or modifications to the equipment.

In general it is recommended that not more than two people operate the unit, more operators could lead to unsafe operating conditions. Take necessary steps to keep unauthorized persons away from the unit and

eliminate all possible sources of danger at the unit.

When handling, operating, overhauling and/or performing maintenance or repair on Chicago Pneumatic equipment, the mechanics are expected to use safe engineering practices and to observe all relevant local safety requirements and ordinances. The following list is a reminder of special safety directives and precautions mainly applicable to Chicago Pneumatic equipment.

Neglecting the safety precautions may endanger people as well as environment and machinery:

- endanger people due to electrical, mechanical or chemical influences,
- endanger the environment due to leakage of oil, solvents or other substances,
- endanger the machinery due to function failures.

All responsibility for any damage or injury resulting from neglecting these precautions or by non-observance of ordinary caution and due care required in handling, operating, maintenance or repair, also if not expressly mentioned in this instruction manual, is disclaimed by Chicago Pneumatic.

The manufacturer does not accept any liability for any damage arising from the use of non-original parts and for modifications, additions or conversions made without the manufacturer's approval in writing.

If any statement in this manual does not comply with local legislation, the stricter of the two shall be applied.

Statements in these safety precautions should not be interpreted as suggestions, recommendations or inducements that it should be used in violation of any applicable laws or regulations.

## 0.2 GENERAL SAFETY PRECAUTIONS

- 1 The owner is responsible for maintaining the unit in a safe operating condition. Unit parts and accessories must be replaced if missing or unsuitable for safe operation.
- 2 The supervisor, or the responsible person, shall at all times make sure that all instructions regarding machinery and equipment operation and maintenance are strictly followed and that the machines with all accessories and safety devices, as well as the consuming devices, are in good repair, free of abnormal wear or abuse, and are not tampered with.
- 3 Whenever there is an indication or any suspicion that an internal part of a machine is overheated, the machine shall be stopped but no inspection covers shall be opened before sufficient cooling time has elapsed; this to avoid the risk of spontaneous ignition of oil vapour when air is admitted.
- 4 Normal ratings (pressures, temperatures, speeds, etc.) shall be durably

marked.

- 5 Operate the unit only for the intended purpose and within its rated limits (pressure, temperature, speeds, etc.).
  - 6 The machinery and equipment shall be kept clean, i.e. as free as possible from oil, dust or other deposits.
  - 7 To prevent an increase in working temperature, inspect and clean heat transfer surfaces (cooler fins, intercoolers, water jackets, etc.) regularly. See the maintenance schedule.
  - 8 All regulating and safety devices shall be maintained with due care to ensure that they function properly. They may not be put out of action.
  - 9 Pressure and temperature gauges shall be checked regularly with regard to their accuracy. They shall be replaced whenever outside acceptable tolerances.
  - 10 Safety devices shall be tested as described in the maintenance schedule of the instruction manual to determine that they are in good operating condition.
  - 11 Mind the markings and information labels on the unit.
  - 12 In the event the safety labels are damaged or destroyed, they must be replaced to ensure operator safety.
  - 13 Keep the work area neat. Lack of order will increase the risk of accidents.
  - 14 When working on the unit, wear safety clothing. Depending on the kind of activities these are: safety glasses, ear protection, safety helmet (including visor), safety gloves, protective clothing, safety shoes. Do not wear the hair long and loose (protect long hair with a hairnet), or wear loose clothing or jewelry.
  - 15 Take precautions against fire. Handle fuel, oil and anti-freeze with care because they are inflammable substances. Do not smoke or approach with naked flame when handling such substances. Keep a fire-extinguisher in the vicinity.
- 16a Portable generators (with earthing pin):**  
Earth the generator as well as the load properly.
- 16b Portable generators IT:**  
**Note:** This generator is built to supply a sheer alternating current IT network.  
Earth the load properly.

### 0.3 SAFETY DURING TRANSPORT AND INSTALLATION

To lift a unit, all loose or pivoting parts, e.g. doors and towbar, shall first be securely fastened.

Do not attach cables, chains or ropes directly to the lifting eye; apply a crane hook or lifting shackle meeting local safety regulations. Never allow sharp bends in lifting cables, chains or ropes.

Helicopter lifting is not allowed.

It is strictly forbidden to dwell or stay in the risk zone under a lifted load. Never lift the unit over people or residential areas. Lifting acceleration and retardation shall be kept within safe limits.

- 1 Before towing the unit:
  - check the towbar, the brake system and the towing eye. Also check the coupling of the towing vehicle,
  - check the towing and brake capability of the towing vehicle,
  - check that the towbar, jockey wheel or stand leg is safely locked in the raised position,
  - ascertain that the towing eye can swivel freely on the hook,
  - check that the wheels are secure and that the tyres are in good condition and inflated correctly,
  - connect the signalisation cable, check all lights and connect the pneumatic brake couplers,
  - attach the safety break-away cable or safety chain to the towing vehicle,
  - remove wheel chocks, if applied, and disengage the parking brake.
- 2 To tow a unit use a towing vehicle of ample capacity. Refer to the documentation of the towing vehicle.
- 3 If the unit is to be backed up by the towing vehicle, disengage the overrun brake mechanism (if it is not an automatic mechanism).
- 4 Never exceed the maximum towing speed of the unit (mind the local regulations).
- 5 Place the unit on level ground and apply the parking brake before disconnecting the unit from the towing vehicle. Unclip the safety break-away cable or safety chain. If the unit has no parking brake or jockey wheel, immobilize the unit by placing chocks in front of and/or behind the wheels. When the towbar can be positioned vertically, the locking device must be applied and kept in good order.
- 6 To lift heavy parts, a hoist of ample capacity, tested and approved according to local safety regulations, shall be used.
- 7 Lifting hooks, eyes, shackles, etc., shall never be bent and shall only have stress in line with their design load axis. The capacity of a lifting device diminishes when the lifting force is applied at an angle to its load axis.
- 8 For maximum safety and efficiency of the lifting apparatus all lifting members shall be applied as near to perpendicular as possible. If

required, a lifting beam shall be applied between hoist and load.

- 9 Never leave a load hanging on a hoist.
- 10 A hoist has to be installed in such a way that the object will be lifted perpendicular. If that is not possible, the necessary precautions must be taken to prevent load-swinging, e.g. by using two hoists, each at approximately the same angle not exceeding 30° from the vertical.
- 11 Locate the unit away from walls. Take all precautions to ensure that hot air exhausted from the engine and driven machine cooling systems cannot be recirculated. If such hot air is taken in by the engine or driven machine cooling fan, this may cause overheating of the unit; if taken in for combustion, the engine power will be reduced.
- 12 Generators shall be stalled on an even, solid floor, in a clean location with sufficient ventilation. If the floor is not level or can vary in inclination, consult Chicago Pneumatic.
- 13 The electrical connections shall correspond to local codes. The machines shall be earthed and protected against short circuits by fuses or circuit breakers.
- 14 Never connect the generator outlets to an installation which is also connected to a public mains.
- 15 Before connecting a load, switch off the corresponding circuit breaker, and check whether frequency, voltage, current and power factor comply with the ratings of the generator.

### 0.4 SAFETY DURING USE AND OPERATION

- 1 When the unit has to operate in a fire-hazardous environment, each engine exhaust has to be provided with a spark arrestor to trap incendiary sparks.
- 2 The exhaust contains carbon monoxide which is a lethal gas. When the unit is used in a confined space, conduct the engine exhaust to the outside atmosphere by a pipe of sufficient diameter; do this in such a way that no extra back pressure is created for the engine. If necessary, install an extractor. Observe any existing local regulations. Make sure that the unit has sufficient air intake for operation. If necessary, install extra air intake ducts.
- 3 When operating in a dust-laden atmosphere, place the unit so that dust is not carried towards it by the wind. Operation in clean surroundings considerably extends the intervals for cleaning the air intake filters and the cores of the coolers.
- 4 Never remove a filler cap of the cooling water system of a hot engine. Wait until the engine has sufficiently cooled down.
- 5 Never refill fuel while the unit is running, unless otherwise stated in the Chicago Pneumatic Instruction Book (AIB). Keep fuel away from hot parts such as air outlet pipes or the engine exhaust. Do not smoke

when fuelling. When fuelling from an automatic pump, an earthing cable should be connected to the unit to discharge static electricity. Never spill nor leave oil, fuel, coolant or cleansing agent in or around the unit.

- 6 All doors shall be shut during operation so as not to disturb the cooling air flow inside the bodywork and/or render the silencing less effective. A door should be kept open for a short period only e.g. for inspection or adjustment.
- 7 Periodically carry out maintenance works according to the maintenance schedule.
- 8 Stationary housing guards are provided on all rotating or reciprocating parts not otherwise protected and which may be hazardous to personnel. Machinery shall never be put into operation, when such guards have been removed, before the guards are securely reinstalled.
- 9 Noise, even at reasonable levels, can cause irritation and disturbance which, over a long period of time, may cause severe injuries to the nervous system of human beings.  
When the sound pressure level, at any point where personnel normally has to attend, is:
  - below 70 dB(A): no action needs to be taken,
  - above 70 dB(A): noise-protective devices should be provided for people continuously being present in the room,
  - below 85 dB(A): no action needs to be taken for occasional visitors staying a limited time only,
  - above 85 dB(A): room to be classified as a noise-hazardous area and an obvious warning shall be placed permanently at each entrance to alert people entering the room, for even relatively short times, about the need to wear ear protectors,
  - above 95 dB(A): the warning(s) at the entrance(s) shall be completed with the recommendation that also occasional visitors shall wear ear protectors,
  - above 105 dB(A): special ear protectors that are adequate for this noise level and the spectral composition of the noise shall be provided and a special warning to that effect shall be placed at each entrance.
- 10 Insulation or safety guards of parts the temperature of which can be in excess of 80 °C (175 °F) and which may be accidentally touched by personnel shall not be removed before the parts have cooled to room temperature.
- 11 Never operate the unit in surroundings where there is a possibility of taking in flammable or toxic fumes.
- 12 If the working process produces fumes, dust or vibration hazards, etc., take the necessary steps to eliminate the risk of personnel injury.

- 13 When using compressed air or inert gas to clean down equipment, do so with caution and use the appropriate protection, at least safety glasses, for the operator as well as for any bystander. Do not apply compressed air or inert gas to your skin or direct an air or gas stream at people. Never use it to clean dirt from your clothes.
- 14 When washing parts in or with a cleaning solvent, provide the required ventilation and use appropriate protection such as a breathing filter, safety glasses, rubber apron and gloves, etc.
- 15 Safety shoes should be compulsory in any workshop and if there is a risk, however small, of falling objects, wearing of a safety helmet should be included.
- 16 If there is a risk of inhaling hazardous gases, fumes or dust, the respiratory organs must be protected and depending on the nature of the hazard, so must the eyes and skin.
- 17 Remember that where there is visible dust, the finer, invisible particles will almost certainly be present too; but the fact that no dust can be seen is not a reliable indication that dangerous, invisible dust is not present in the air.
- 18 Never operate the generator in excess of its limits as indicated in the technical specifications and avoid long no-load sequences.
- 19 Never operate the generator in a humid atmosphere. Excessive moisture causes worsening of the generator insulation.
- 20 Do not open electrical cabinets, cubicles or other equipment while voltage is supplied. If such cannot be avoided, e.g. for measurements, tests or adjustments, have the action carried out by a qualified electrician only, with appropriate tools, and ascertain that the required bodily protection against electrical hazards is applied.
- 21 Never touch the power terminals during operation of the machine.
- 22 Whenever an abnormal condition arises, e.g. excessive vibration, noise, odour, etc., switch the circuit breakers to OFF and stop the engine. Correct the faulty condition before restarting.
- 23 Check the electric cables regularly. Damaged cables and insufficient lightening of connections may cause electric shocks. Whenever damaged wires or dangerous conditions are observed, switch the circuit breakers to OFF and stop the engine. Replace the damaged wires or correct the dangerous condition before restarting. Make sure that all electric connections are securely tightened.
- 24 Avoid overloading the generator. The generator is provided with circuit breakers for overload protection. When a breaker has tripped, reduce the concerned load before restarting.
- 25 If the generator is used as stand-by for the mains supply, it must not be operated without control system which automatically disconnects the generator from the mains when the mains supply is restored.
- 26 Never remove the cover of the output terminals during operation. Before connecting or disconnecting wires, switch off the load and the circuit breakers, stop the machine and make sure that the machine

cannot be started inadvertently or there is any residual voltage on the power circuit.

- 27 Running the generator at low load for long periods will reduce the lifetime of the engine.

## 0.5 SAFETY DURING MAINTENANCE AND REPAIR

Maintenance, overhaul and repair work shall only be carried out by adequately trained personnel; if required, under supervision of someone qualified for the job.

- 1 Use only the correct tools for maintenance and repair work, and only tools which are in good condition.
- 2 Parts shall only be replaced by genuine Chicago Pneumatic replacement parts.
- 3 All maintenance work, other than routine attention, shall only be undertaken when the unit is stopped. Steps shall be taken to prevent inadvertent starting. In addition, a warning sign bearing a legend such as "work in progress; do not start" shall be attached to the starting equipment.  
On engine-driven units the battery shall be disconnected and removed or the terminals covered by insulating caps.  
On electrically driven units the main switch shall be locked in open position and the fuses shall be taken out. A warning sign bearing a legend such as "work in progress; do not supply voltage" shall be attached to the fuse box or main switch.
- 4 Prior to stripping an engine or other machine or undertaking major overhaul on it, prevent all movable parts from rolling over or moving.
- 5 Make sure that no tools, loose parts or rags are left in or on the machine. Never leave rags or loose clothing near the engine air intake.
- 6 Never use flammable solvents for cleaning (fire-risk).
- 7 Take safety precautions against toxic vapours of cleaning liquids.
- 8 Never use machine parts as a climbing aid.
- 9 Observe scrupulous cleanliness during maintenance and repair. Keep away dirt, cover the parts and exposed openings with a clean cloth, paper or tape.
- 10 Never weld on or perform any operation involving heat near the fuel or oil systems. Fuel and oil tanks must be completely purged, e.g. by steam-cleaning, before carrying out such operations. Never weld on, or in any way modify, pressure vessels. Disconnect the alternator cables during arc welding on the unit.
- 11 Support the towbar and the axle(s) securely if working underneath the unit or when removing a wheel. Do not rely on jacks.

- 12 Do not remove any of, or tamper with, the sound-damping material. Keep the material free of dirt and liquids such as fuel, oil and cleansing agents. If any sound-damping material is damaged, replace it to prevent the sound pressure level from increasing.
- 13 Use only lubricating oils and greases recommended or approved by Chicago Pneumatic or the machine manufacturer. Ascertain that the selected lubricants comply with all applicable safety regulations, especially with regard to explosion or fire-risk and the possibility of decomposition or generation of hazardous gases. Never mix synthetic with mineral oil.
- 14 Protect the engine, alternator, air intake filter, electrical and regulating components, etc., to prevent moisture ingress, e.g. when steam-cleaning.
- 15 When performing any operation involving heat, flames or sparks on a machine, the surrounding components shall first be screened with non-flammable material.
- 16 Never use a light source with open flame for inspecting the interior of a machine.
- 17 When repair has been completed, the machine shall be barred over at least one revolution for reciprocating machines, several revolutions for rotary ones to ensure that there is no mechanical interference within the machine or driver. Check the direction of rotation of electric motors when starting up the machine initially and after any alteration to the electrical connection(s) or switch gear, to check that the oil pump and the fan function properly.
- 18 Maintenance and repair work should be recorded in an operator's logbook for all machinery. Frequency and nature of repairs can reveal unsafe conditions.
- 19 When hot parts have to be handled, e.g. shrink fitting, special heat-resistant gloves shall be used and, if required, other body protection shall be applied.
- 20 When using cartridge type breathing filter equipment, ascertain that the correct type of cartridge is used and that its useful service life is not surpassed.
- 21 Make sure that oil, solvents and other substances likely to pollute the environment are properly disposed of.
- 22 Before clearing the generator for use after maintenance or overhaul, submit it to a testrun, check that the AC power performance is correct and that the control and shutdown devices function correctly.

## 0.6 TOOL APPLICATIONS SAFETY

Apply the proper tool for each job. With the knowledge of correct tool use and knowing the limitations of tools, along with some common sense, many accidents can be prevented.

Special service tools are available for specific jobs and should be used when recommended. The use of these tools will save time and prevent damage to parts.

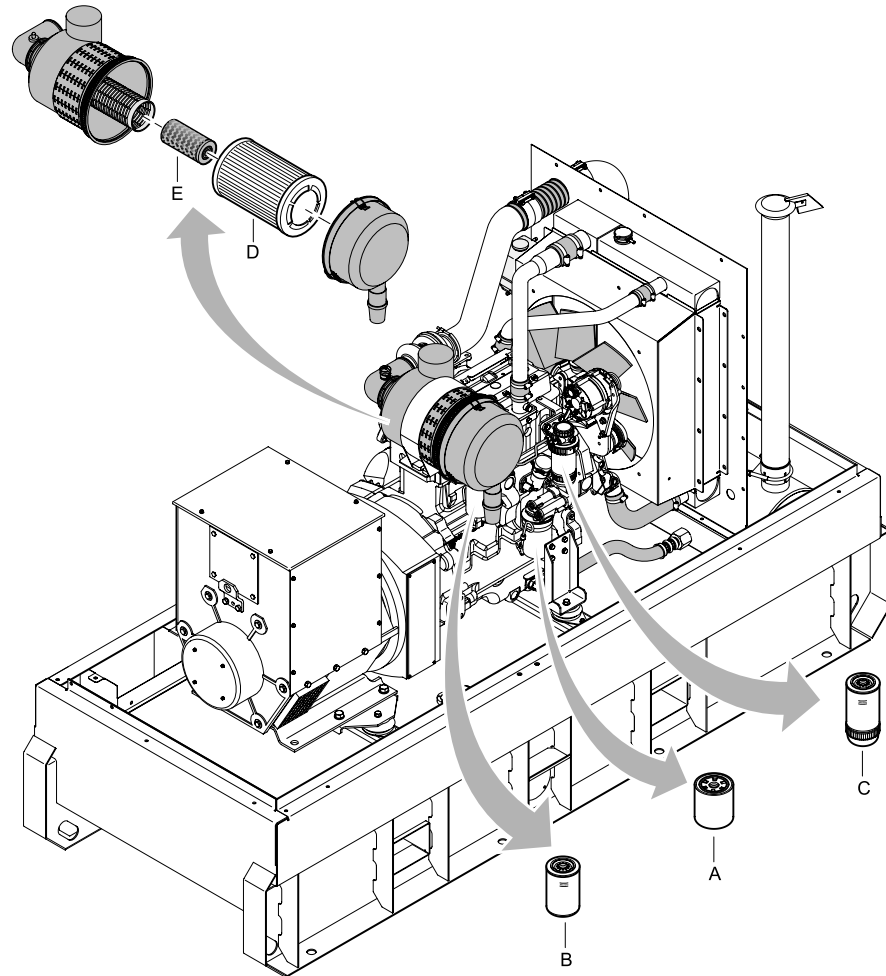
## 0.7 SPECIFIC SAFETY PRECAUTIONS

### Batteries

When servicing batteries, always wear protecting clothing and glasses.

- 1 The electrolyte in batteries is a sulphuric acid solution which is fatal if it hits your eyes, and which can cause burns if it contacts your skin. Therefore, be careful when handling batteries, e.g. when checking the charge condition.
- 2 Install a sign prohibiting fire, open flame and smoking at the post where batteries are being charged.
- 3 When batteries are being charged, an explosive gas mixture forms in the cells and might escape through the vent holes in the plugs. Thus an explosive atmosphere may form around the battery if ventilation is poor, and can remain in and around the battery for several hours after it has been charged. Therefore:
  - never smoke near batteries being, or having recently been, charged,
  - never break live circuits at battery terminals, because a spark usually occurs.
- 4 When connecting an auxiliary battery (AB) in parallel to the unit battery (CB) with booster cables: connect the + pole of AB to the + pole of CB, then connect the - pole of CB to the mass of the unit. Disconnect in the reverse order.

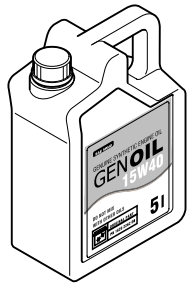
# SERVICE PAK



REF	PART NUMBER	DESIGNATION	QTY
-	1310 3004 45	SERVICE PAK 250HR	
•A	-	OIL FILTER	1
•B	-	FUEL FILTER	1
•C	-	FUEL PRE FILTER	1
-	1310 3004 46	SERVICE PAK 1000HR	
•A	-	OIL FILTER	1
•B	-	FUEL FILTER	1
•C	-	FUEL PRE FILTER	1
•D	-	AIR FILTER MAIN	1
•E	-	AIR FILTER SAFETY	1

**ENGINE OIL - GENOIL 15W40**

<b>REF</b>	<b>PART NUMBER</b>	<b>DESIGNATION</b>	<b>QTY</b>
A	1626 2262 00	GENOIL 15W 40 (5 LITER)	1
B	1626 2263 00	GENOIL 15W 40 (20 LITER)	1



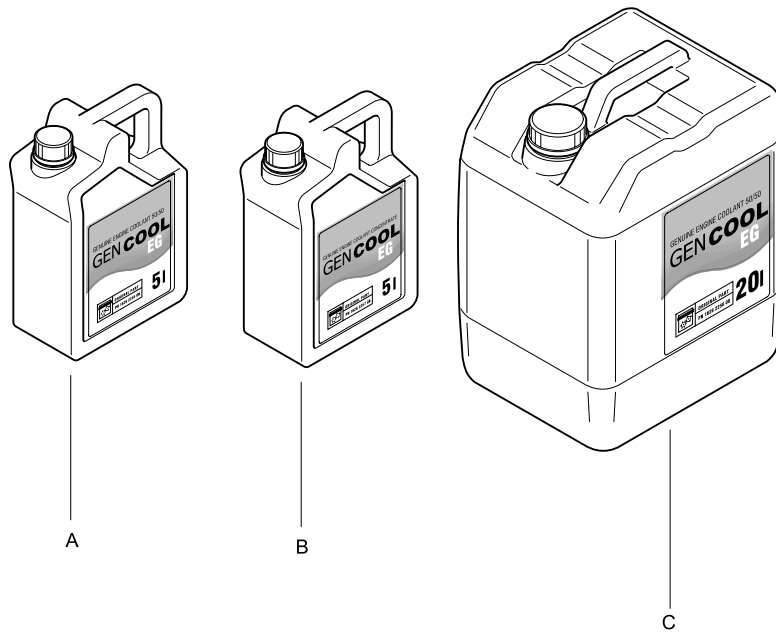
A



B

# ENGINE COOLANT - GENCOOL EG

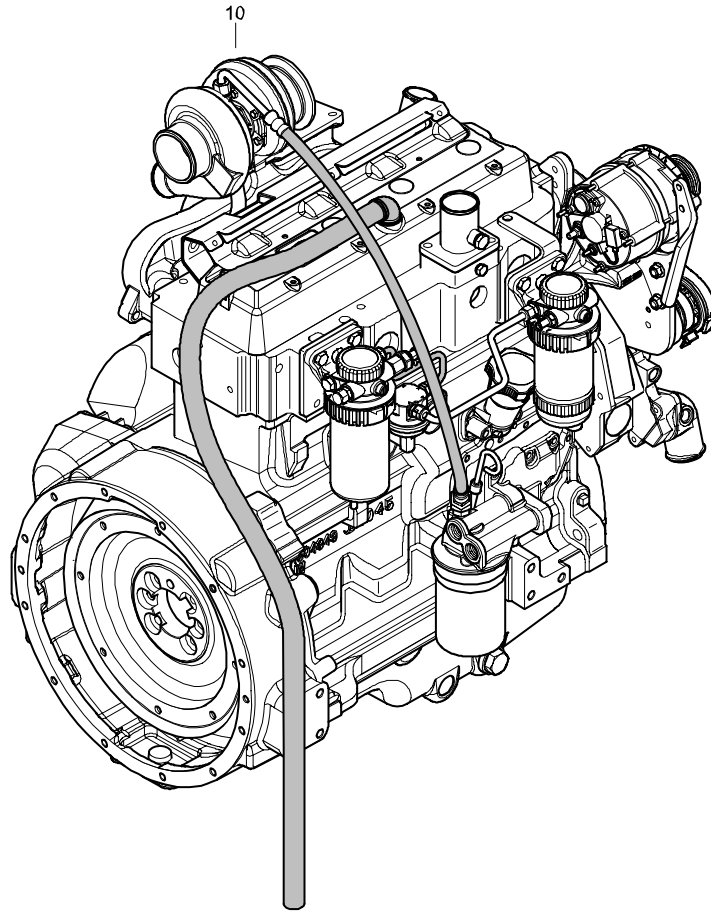
REF	PART NUMBER	DESIGNATION	QTY
A	1626 2255 00	GENCOOL EG (5 LITER)	1
B	1626 2257 00	GENCOOL EG (5 LITER) CONCENTRATE	1
C	1626 2256 00	GENCOOL EG (20 LITER)	1





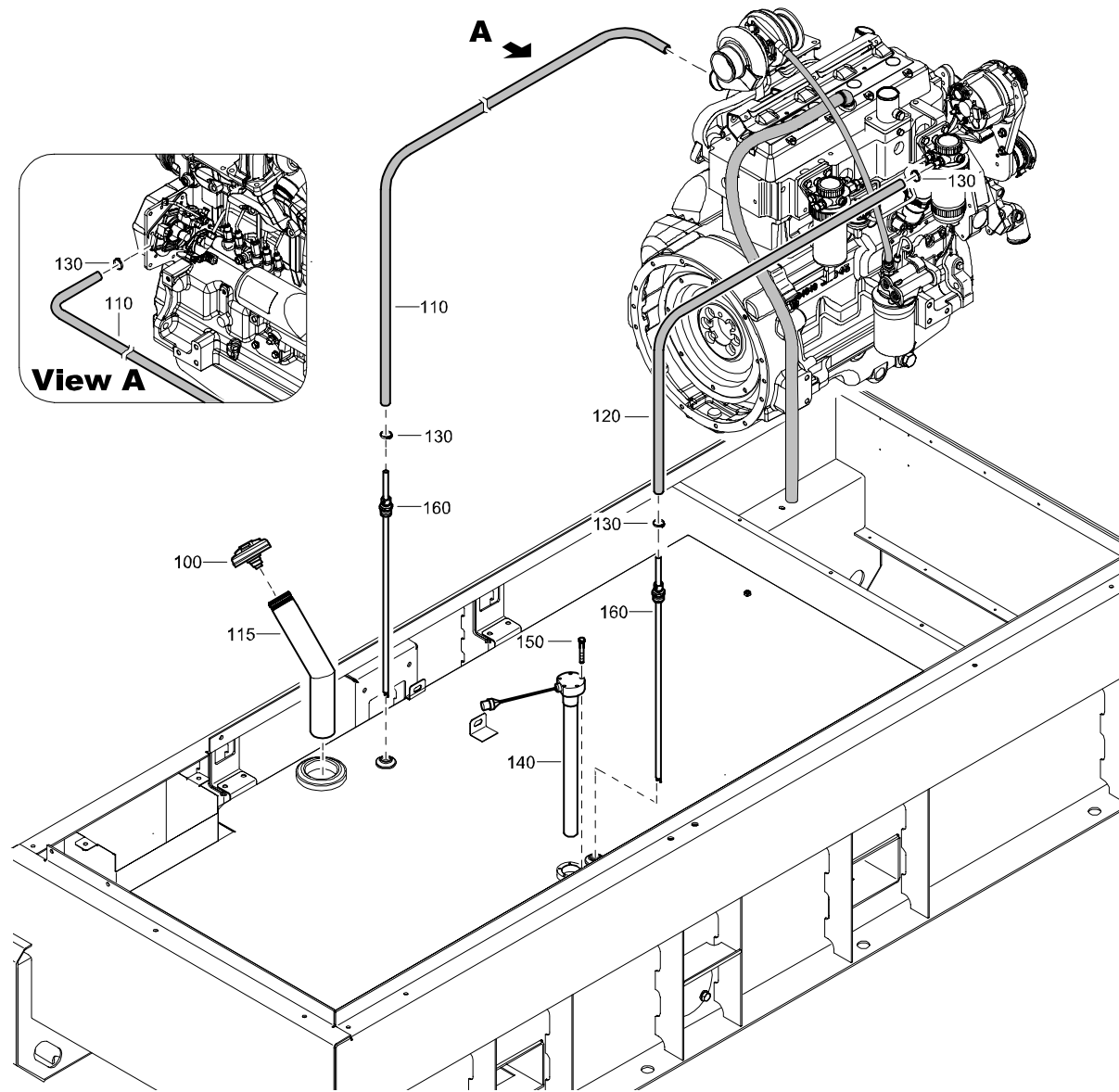
**ENGINE - STANDARD**

<b>REF</b>	<b>PART NUMBER</b>	<b>DESIGNATION</b>	<b>QTY</b>
10	1310 0368 34	ENGINE	1



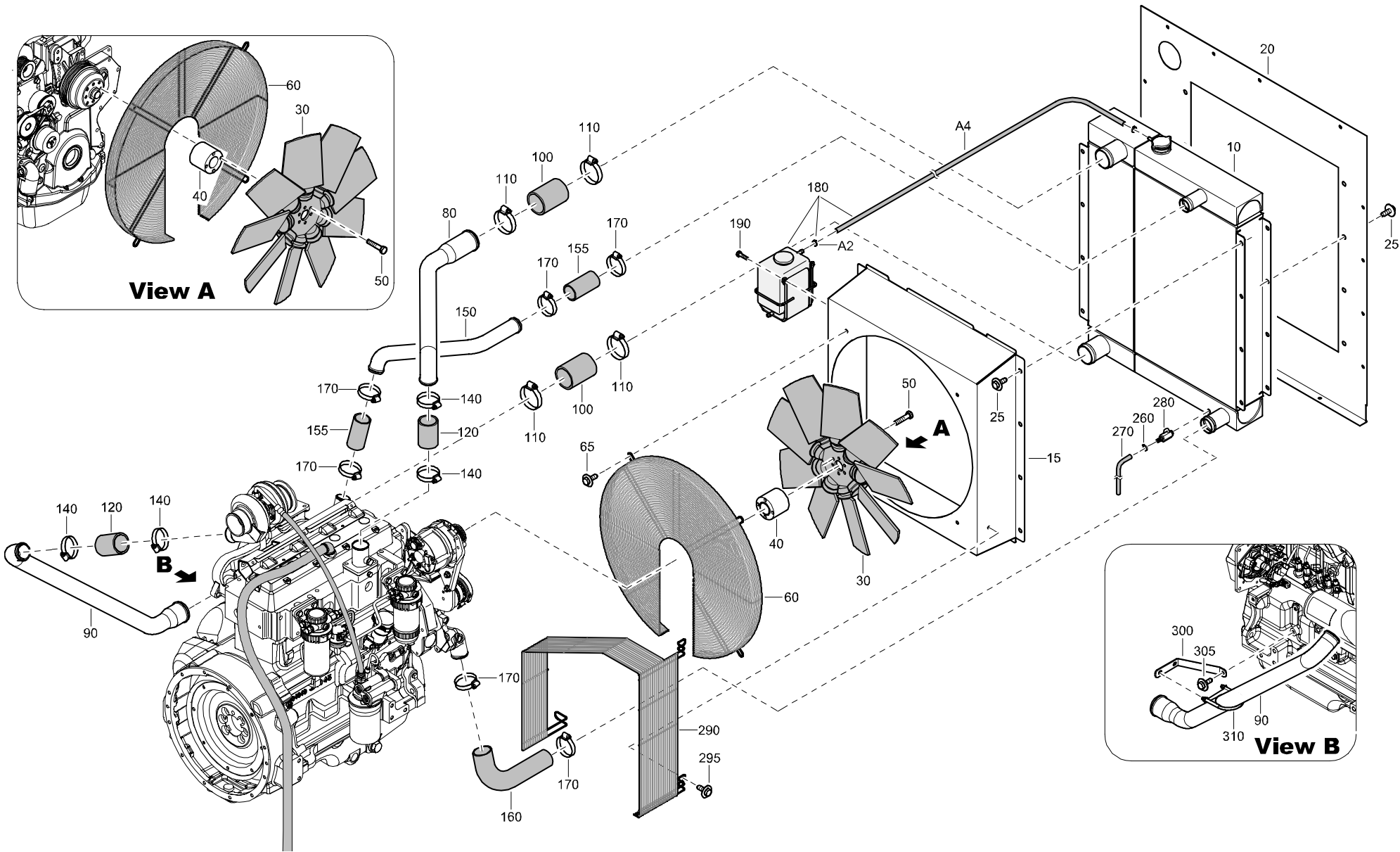


# FUEL SYSTEM - STANDARD



REF	PART NUMBER	DESIGNATION	QTY
100	1615 6947 01	FUEL CAP	1
110	1310 0363 64	FUEL HOSE	AR
115	1310 4476 00	PIPE FUEL FILLER	1
120	1310 0311 98	FUEL HOSE	AR
130	1310 0323 84	HOSE CLAMP	4
140	1310 4524 00	FUEL LEVEL SENSOR	1
150	0147 1212 03	HEX HD SCREW	5
160	1310 4526 00	FUEL TUBE INLET/OUTLET	2

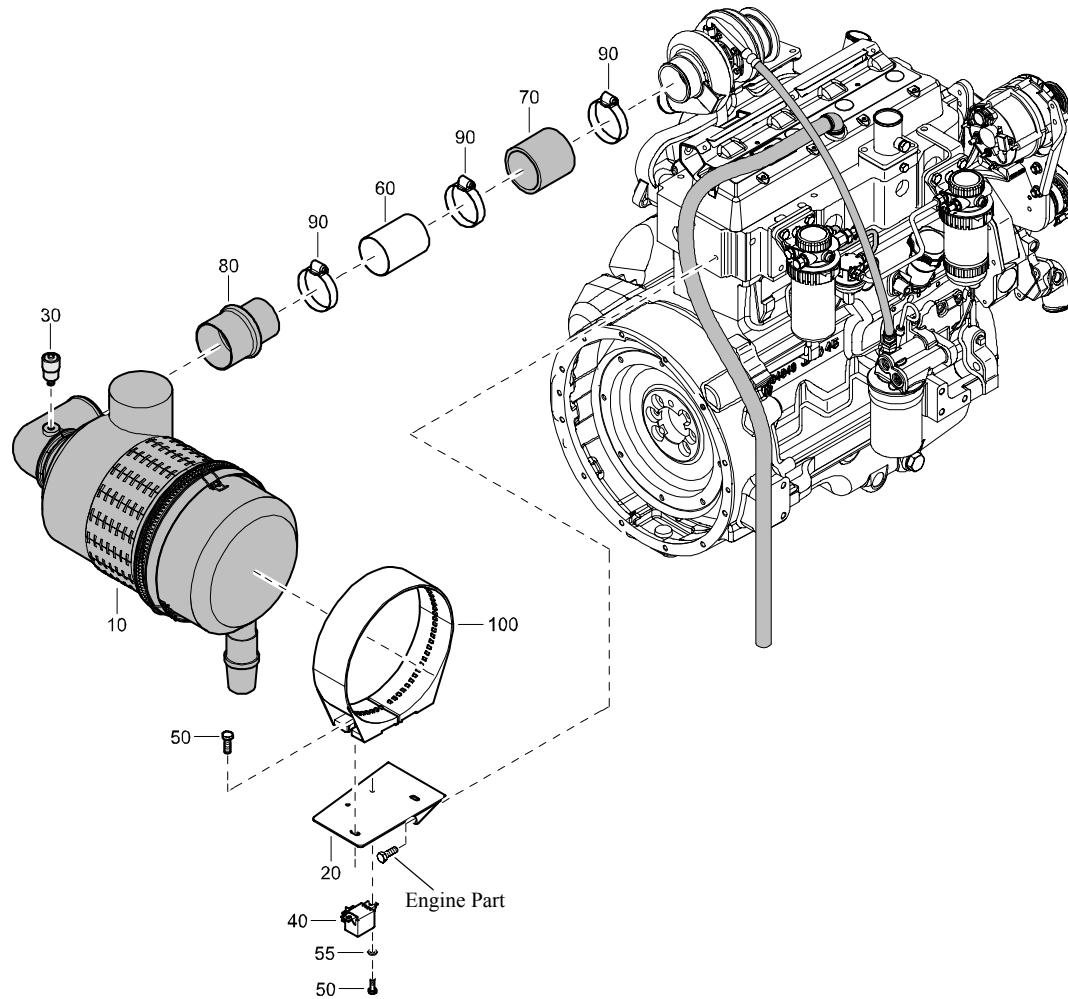
**COOLING SYSTEM - STANDARD**



**COOLING SYSTEM - STANDARD**

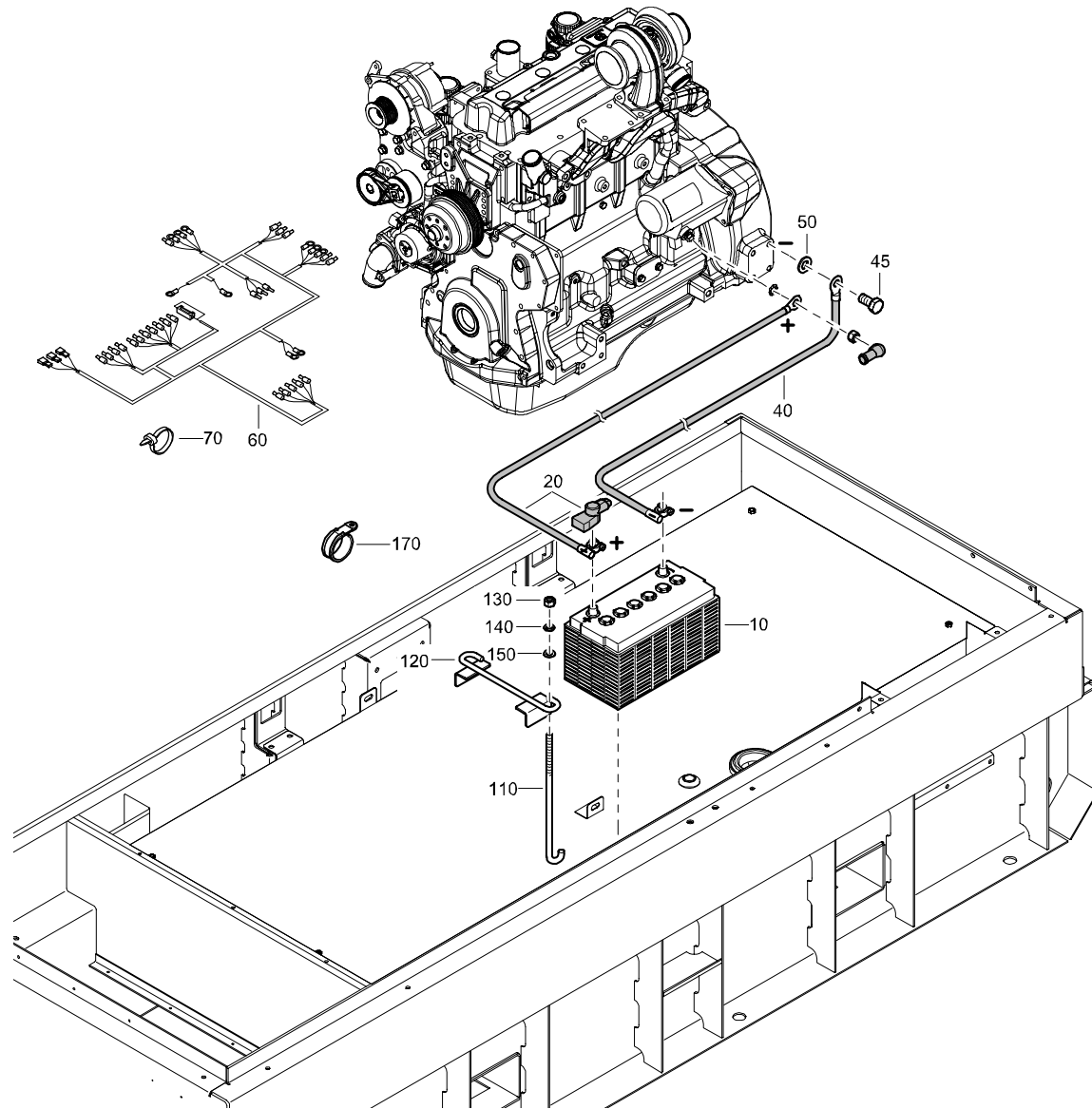
REF	PART NUMBER	DESIGNATION	QTY	REF	PART NUMBER	DESIGNATION	QTY	REF	PART NUMBER	DESIGNATION	QTY
10	1310 4388 00	RADIATOR	1								
15	1310 4395 00	FAN BOX	1								
20	1310 4394 00	SUPPORT COOLER	1								
25	1615 5664 00	SCRAPER BOLT	38								
30	1310 0354 80	FAN	1								
40	1310 4545 00	FAN SPACER	1								
50	0147 1327 03	HEX HD SCREW	4								
60	1310 0363 41	FAN GUARD	1								
65	1619 2766 00	HEX HD SCREW	4								
80	1310 4360 00	UPPER PIPE CAC	1								
90	1310 4361 00	LOWER PIPE CAC	1								
100	1310 0370 04	CONNECTOR CAC	2								
110	1310 0370 05	HOSE CLAMP	4								
120	1310 0370 07	HOSE CAC	AR								
140	1310 0355 13	HOSE CLAMP ENGINE INLET/TURBO	4								
150	1310 4007 00	COOLANT PIPE UPPER	1								
155	1310 0301 03	HOSE	2								
160	1310 0349 00	LOWER HOSE RADIATOR	1								
170	0347 6113 00	HOSE CLAMP	6								
180	1310 0343 72	KIT COOLANT RECOVERY SYSTEM	1								
A2	1310 0323 84	HOSE CLAMP	1								
A4	1310 0315 92	HOSE	1								
190	0147 1247 03	HEX HD SCREW	2								
260	1310 0323 84	HOSE CLAMP	1								
270	1310 0355 56	TUBE WALL	AR								
280	1615 7072 00	VALVE	1								
290	1310 0359 95	FAN GUARD PULLEY	1								
295	1619 2766 00	HEX HD SCREW	2								
300	1310 4471 00	SUPPORT CAC BRACKET	1								
305	1619 2766 00	HEX HD SCREW	3								
310	1310 1477 00	CLAMP	1								

# AIR INLET - STANDARD



REF	PART NUMBER	DESIGNATION	QTY
10	1310 0354 97	AIR FILTER	1
20	1310 0353 80	AIR FILTER BRACKET	1
30	1310 0355 53	GAUGE	1
40	1310 0304 71	RELAY	1
50	0147 1246 03	HEX HD SCREW	2
55	0301 2321 00	FLAT WASHER	2
60	1310 4398 00	PIPE AIR INLET	1
70	1310 0345 23	HOSE AIR INLET	1
80	1310 0325 60	HUMP HOSE	1
90	0347 6131 00	HOSE CLAMP	3
100	0347 6131 00	HOSE CLAMP	1

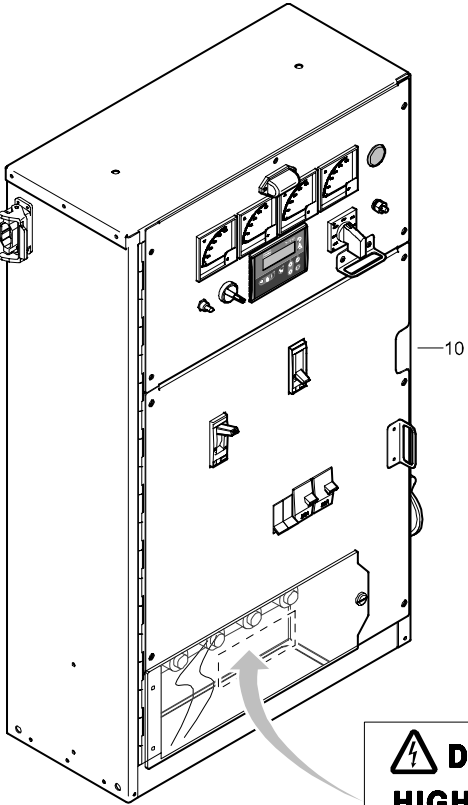
# ELECTRICAL SYSTEM - STANDARD



REF	PART NUMBER	DESIGNATION	QTY
10	1310 0310 89	BATTERY	1
20	1310 0317 65	BATTERY CABLE	1
40	1310 0363 28	BATTERY CABLE	1
45	0147 1400 03	HEX HD SCREW	1
50	0301 2358 00	FLAT WASHER	1
60	1310 4448 00	WIRING HARNESS	1
70	1088 1301 02	CABLE TY	15
110	1310 0311 67	BOLT	2
120	1310 0311 66	BATTERY CLAMP	1
130	0268 3205 00	HEX NUT	2
140	0333 2225 00	SPRING WASHER	2
150	0301 2335 00	FLAT WASHER	2
170	1310 0325 89	CABLE CLAMP	2

**CUBICLE ASSEMBLY - CPG 90 Jd - STANDARD**

REF	PART NUMBER	DESIGNATION	QTY
10	1310 4367 81	CUBICLE ASSY (For details see page 40)	1
110	1310 4641 00	LABEL HIGH VOLTAGE	1



**⚡ DANGER HIGH VOLTAGE**

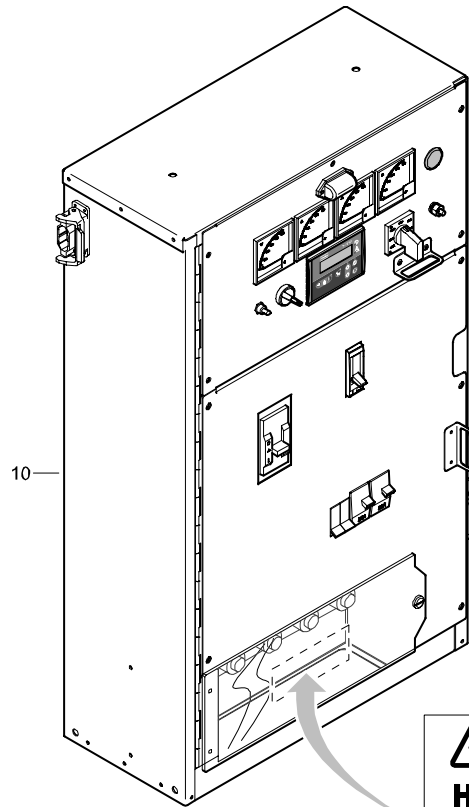
**CAUTION:**  
Do not operate selector switch while generator is running.  
Do not connect to bus panel while generator is running.

SELECTOR SWITCH POSITION	BUS PANEL CONNECTION	CONNECTION VOLTAGE	MAX. AMPS
277/480V 3 phase	L1-N	277vac 1.0PF	85
	L2-N	277vac 1.0PF	85
	L3-N	277vac 1.0PF	85
	L1-L2-L3	480vac 0.8PF	108
120/208V 3 phase	L1-N	120vac 1.0PF	200
	L2-N	120vac 1.0PF	200
	L3-N	120vac 1.0PF	200
	L1-L2-L3	208vac 0.8PF	250
139/240V 3 phase	L1-N	139vac 1.0PF	122
	L2-N	139vac 1.0PF	122
	L3-N	139vac 1.0PF	122
	L1-L2-L3	240vac 0.8PF	216
120/240V 1Ph L1-L2	L1-N	120vac 1.0PF	250
	L2-N	120vac 1.0PF	250
	L1-L2	240vac 1.0PF	250

Do not use L-3 terminal in single phase mode.

**CUBICLE ASSEMBLY - CPG 120 Jd - STANDARD**

REF	PART NUMBER	DESIGNATION	QTY
10	1310 4368 81	CUBICLE ASY (For details see page 42)	1
130	1310 4638 00	LABEL HIGH VOLTAGE	1

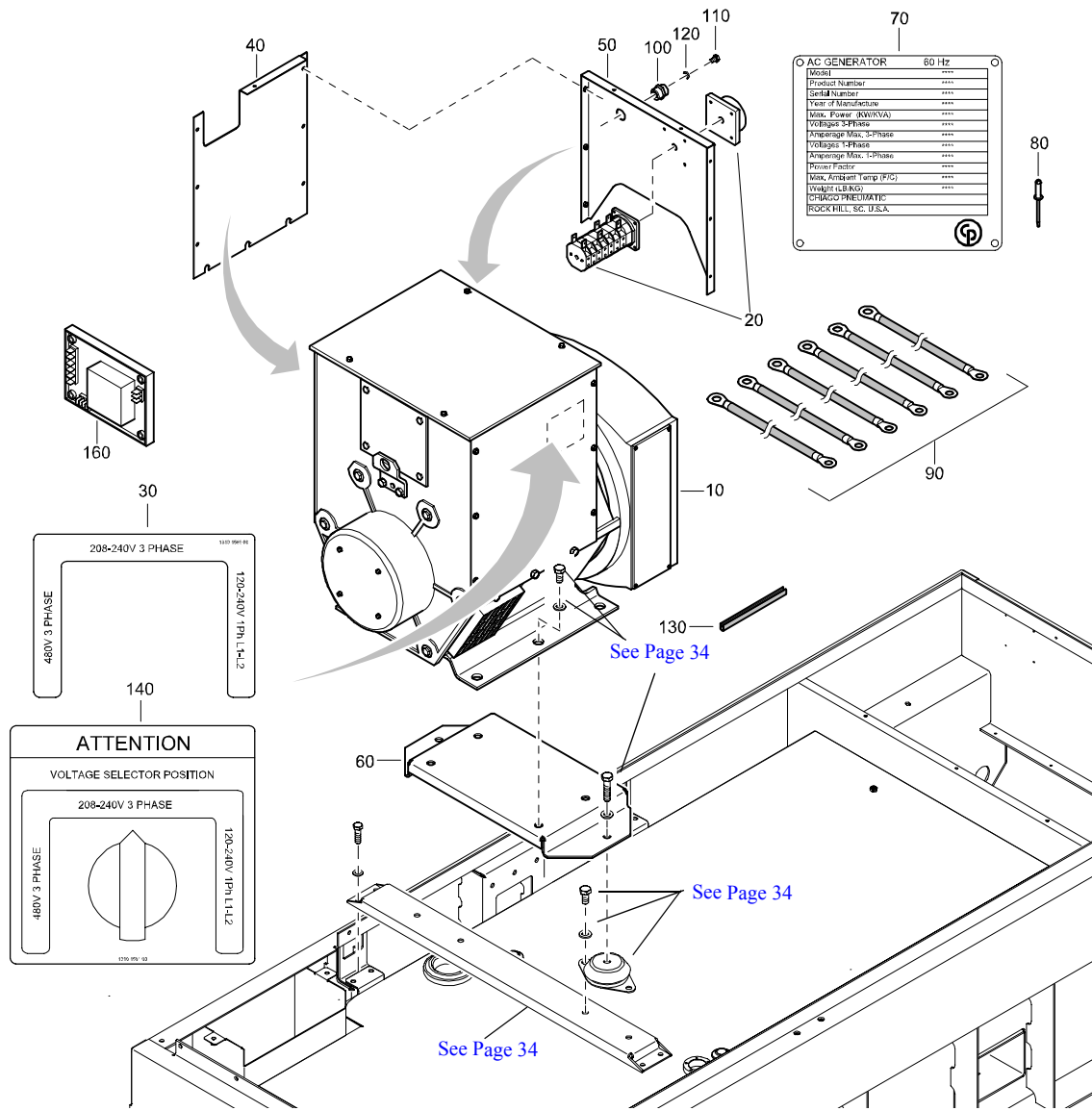


**DANGER**

**HIGH VOLTAGE**

SELECTOR SWITCH POSITION	BUS PANEL CONNECTION	CONNECTION VOLTAGE	MAX. AMPS
277/480V 3 phase	L1-N	277Vac 1.0PF	137
	L2-N	277Vac 1.0PF	137
	L3-N	277Vac 1.0PF	137
120/208V 3 phase	L1-L2-L3	480Vac 0.8PF	172
	L1-N	120Vac 1.0PF	291
	L2-N	120Vac 1.0PF	291
139/240V 3 phase	L3-N	120Vac 1.0PF	291
	L1-L2-L3	208Vac 0.8PF	364
	L1-N	139Vac 1.0PF	275
120/240V	L2-N	139Vac 1.0PF	275
	L3-N	139Vac 1.0PF	275
	L1-L2-L3	240Vac 0.8PF	344
Do not use L-3 terminal in single phase mode.	L1-N	120Vac 1.0PF	364
	L2-N	120Vac 1.0PF	364
	1Ph L1-L2	240Vac 1.0PF	364

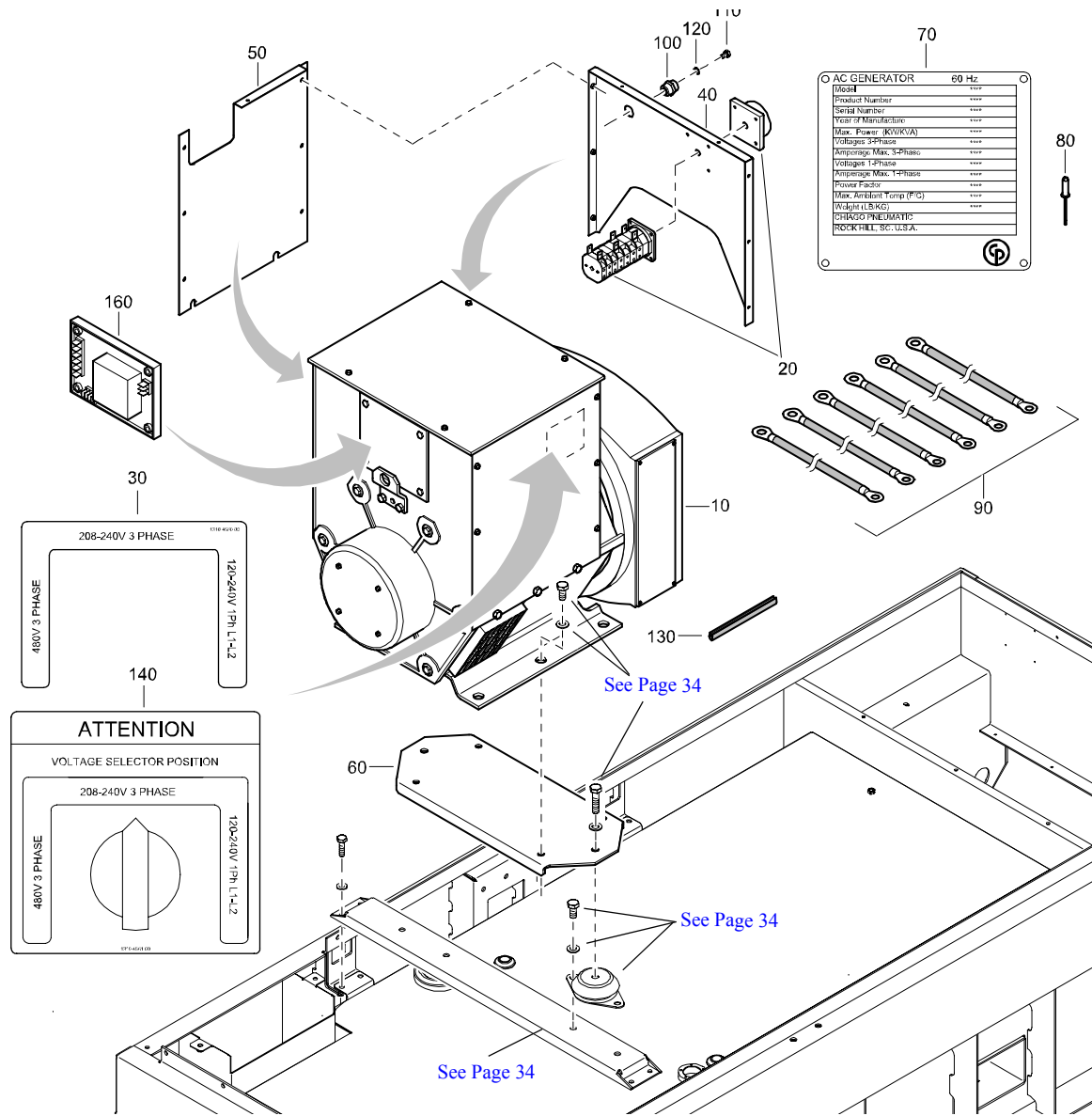
# ALTERNATOR ASSEMBLY - CPG 90 Jd - STANDARD



REF	PART NUMBER	DESIGNATION	QTY
10	1310 4568 00	ALTERNATOR	1
20	1089 9378 25	SELECTOR SWITCH	1
30	1310 4560 00	LABEL SELECTOR SWITCH VOLTAGES	1
40	1310 4538 00	PANEL ALTERNATOR	1
50	1310 4534 00	PLATE ALTERNATOR SWITCH	1
60	1310 4529 00	PLATE ALTERNATOR	1
70	-	DATA PLATE (Not available separately)	1
80	1310 0361 69	BLIND RIVET	4
90	1310 4642 00	WIRE SET	1
100	1089 9385 02	ISOLATOR	3
110	0147 1320 03	HEX HD SCREW	6
120	0333 3227 00	LOCKWASHER	6
130	1503 1056 00	SEAL	AR
140	1310 4561 00	LABEL SELECTOR SWITCH POSITION	1
160	<del>1089 9592 01</del>	ALTERNATOR VOLTAGE REGULATOR	1

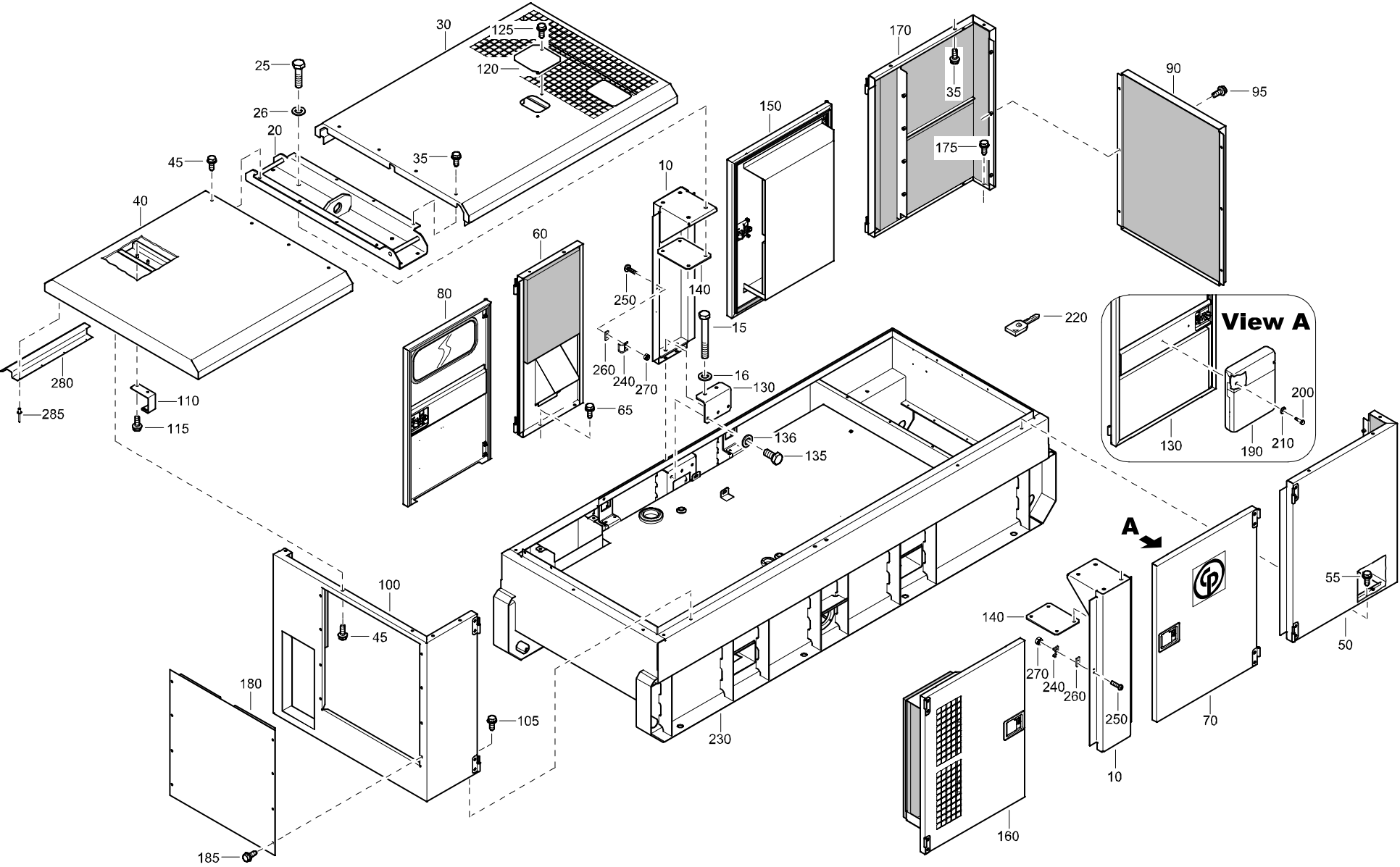


# ALTERNATOR ASSEMBLY - CPG 120 Jd - STANDARD



REF	PART NUMBER	DESIGNATION	QTY
10	1310 4570 00	ALTERNATOR	1
20	1089 9378 26	SELECTOR SWITCH	1
30	1310 4560 00	LABEL SELECTOR SWITCH VOLTAGES	1
40	1310 4535 00	PLATE ALTERNATOR SWITCH	1
50	1310 4536 00	PANEL ALTERNATOR	1
60	1310 4523 00	PLATE ALTERNATOR MOUNT	1
70	-	DATA PLATE (Not available separately)	1
80	1310 0361 69	BLIND RIVET	4
90	1310 4642 00	WIRE SET	1
100	1089 9385 02	ISOLATOR	3
110	0147 1320 03	HEX HD SCREW	6
120	0333 3227 00	LOCKWASHER	6
130	1503 1056 00	SEAL	AR
140	1310 4561 00	LABEL SELECTOR SWITCH POSITION	1
160	<del>1089 9592 01</del>	ALTERNATOR VOLTAGE REGULATOR	1

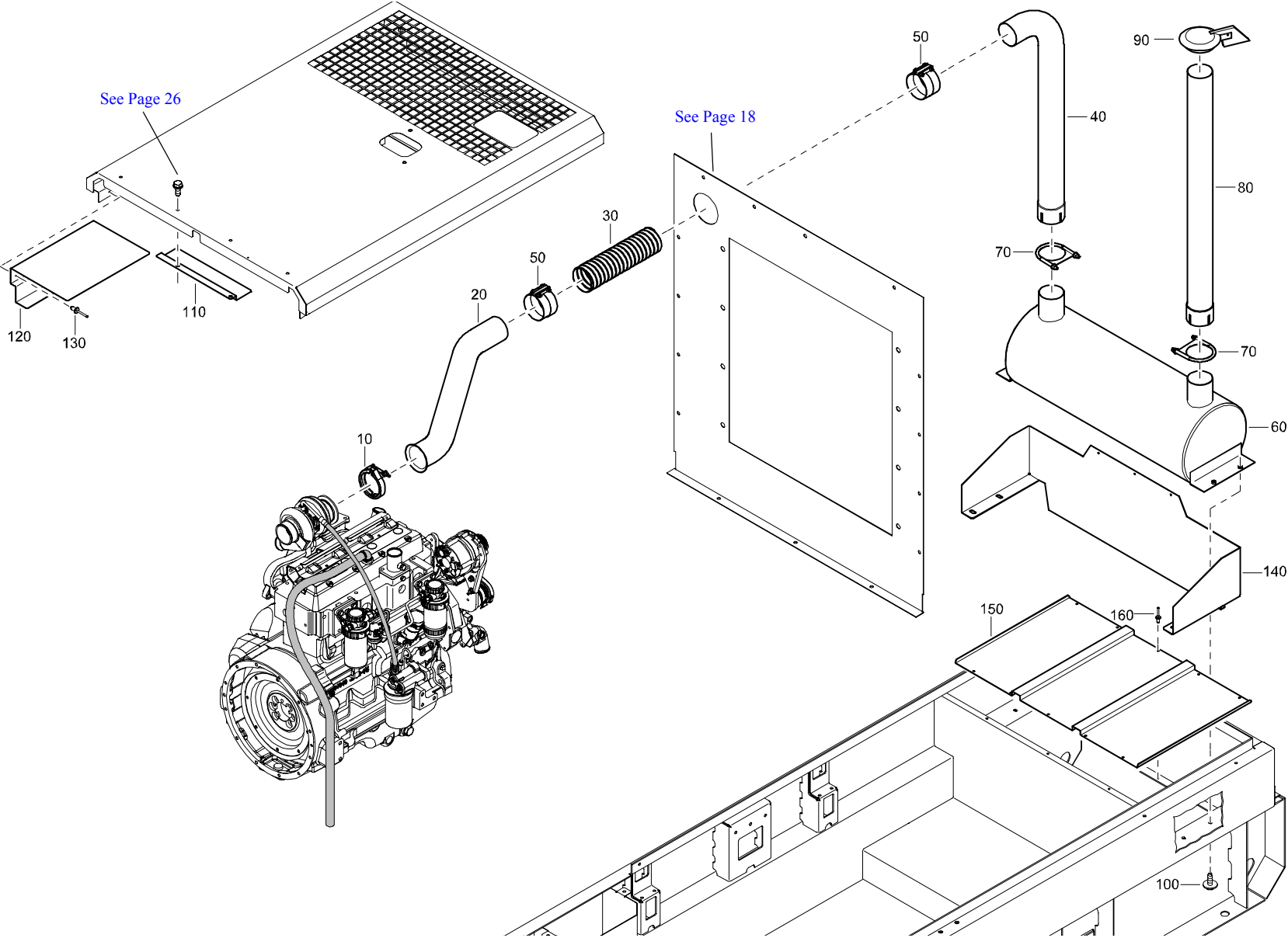
**BODYWORK - STANDARD**



**BODYWORK - STANDARD**

REF	PART NUMBER	DESIGNATION	QTY	REF	PART NUMBER	DESIGNATION	QTY	REF	PART NUMBER	DESIGNATION	QTY
10	1310 4408 22	SIDE SUPPORT	2	175	1619 2766 00	HEX HEAD SCREW	3				
15	0147 1413 03	HEX HEAD SCREW	4	180	-	PANEL ASSY REAR	1				
16	0301 2358 00	FLAT WASHER	4			(For details see page 56)					
20	1310 4409 22	LIFTING-BEAM	1	185	1619 2766 00	HEX HEAD SCREW	8				
25	0147 1403 03	HEX HEAD SCREW	8	190	1310 0356 39	DOCUMENT HOLDER	1				
26	0301 2358 00	FLAT WASHER	8	200	0144 3206 03	SCREW	2				
30	1310 4370 80	PANEL-ROOF ASY FRONT	1	210	0301 2327 00	FLAT WASHER	2				
		(For details see page 46)		220	1615 7271 00	KEY	2				
35	1619 2766 00	HEX HEAD SCREW	10	230	1310 3124 86	KIT FRAME SHEET METAL	1				
40	1310 4371 80	PANEL-ROOF ASY FRONT	1	240	1604 5031 00	BRACKET	5				
		(For details see page 47)		250	0215 0003 89	SCREW	10				
45	1619 2766 00	HEX HEAD SCREW	10	260	1310 4019 00	SPACER	5				
50	1310 4380 80	CORNER FRONT R	1	270	0291 1108 00	LOCKNUT	10				
		(For details see page 54)		280	1310 4373 00	RAIN GUARD CUBICLE	1				
55	1619 2766 00	HEX HEAD SCREW	3	285	0129 3172 01	BLIND RIVET	4				
60	1310 4374 80	PANEL-SIDE ASY	1								
		(For details see page 48)									
65	1619 2766 00	HEX HEAD SCREW	2								
70	-	DOOR-LARGE ASY L	1								
		(For details see page 49)									
80	-	DOOR-CUBICLE ASY	1								
		(For details see page 50)									
90	-	PANEL-FRONT ASY	1								
		(For details see page 52)									
95	1619 2766 00	HEX HEAD SCREW	6								
100	1310 4379 80	PANEL-REAR ASY	1								
		(For details see page 53)									
105	1619 2766 00	HEX HEAD SCREW	5								
110	1310 4533 00	BRACKET CUBICLE TO ROOF	1								
115	1619 2766 00	HEX HEAD SCREW	3								
120	1310 4477 00	COVER CANOPY	1								
125	1619 2766 00	HEX HEAD SCREW	2								
130	1310 4478 00	BRACKET LIFTING SUPPORT	2								
135	0147 1398 03	HEX HEAD SCREW	6								
136	0301 2358 00	FLAT WASHER	6								
140	1310 4480 00	PLATE LIFTING BEAM	2								
150	-	DOOR VENT FRONT	1								
		(For details see page 55)									
160	1310 4506 80	DOOR VENT REAR	1								
		(For details see page 58)									
170	1310 4542 80	CORNER FRONT L	1								
		(For details see page 57)									

**EXHAUST - STANDARD**



## EXHAUST - STANDARD

REF	PART NUMBER	DESIGNATION	QTY	REF	PART NUMBER	DESIGNATION	QTY	REF	PART NUMBER	DESIGNATION	QTY
10	1310 0324 68	EXHAUST CLAMP V-BAND	1								
20	1310 4386 00	EXHAUST PIPE	1								
30	1310 4639 00	HOSE FLEX METAL	1								
40	1310 4385 00	EXHAUST PIPE	1								
50	1310 0356 46	EXHAUST CLAMP	2								
60	1310 4359 00	MUFFLER	1								
70	1310 0355 81	SADDLE CLAMP	2								
80	1310 4387 00	EXHAUST PIPE	1								
90	1310 0382 37	RAIN CAP	1								
100	1615 5664 00	SCRAPER BOLT	4								
110	1310 4635 00	PLATE HEAT DEFLECTOR	1								
120	1310 4636 00	SHIELD EXHAUST	1								
130	0129 3270 30	BLIND RIVET	4								
140	1310 4473 00	SHIELD HEAT EXHAUST	1								
150	1310 4481 00	PANEL EXHAUST	1								
160	0129 3270 30	BLIND RIVET	10								

**MARKINGS - CPG 90 - STANDARD**

**WARNING**

**SEVERE HAZARD!**  
Machine can start automatically. Disconnect battery prior to servicing. Failure to comply can result in death or serious injury.

1319-0352 32

50

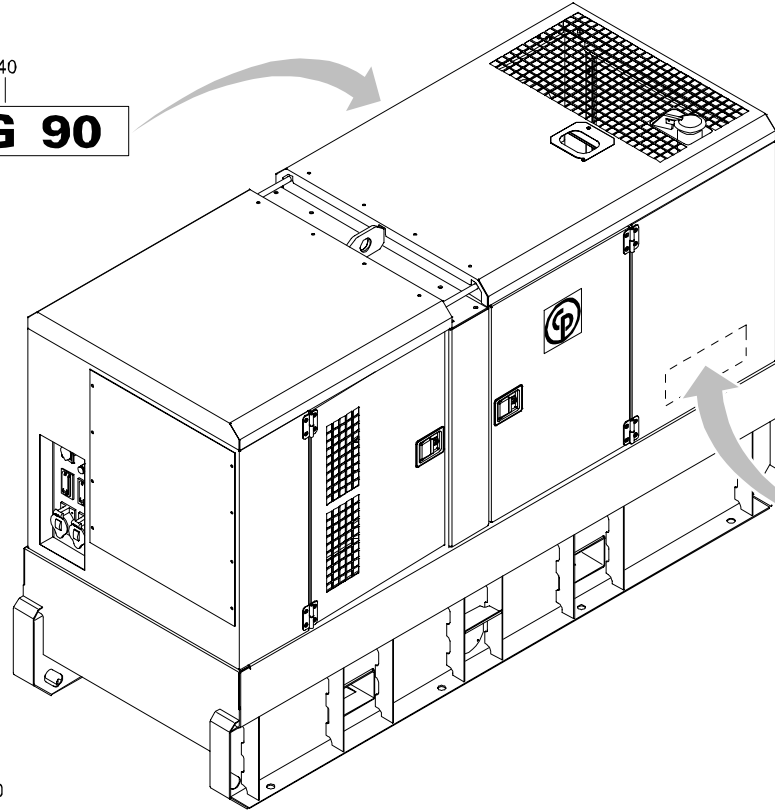
**CAUTION**

**BURN HAZARD!**  
Keep clear. Hot exhaust may burn. Failure to comply may result in moderate or minor injury.

1319-0374

140

40  
**CPG 90**



90

**WARNING**

**FIRE HAZARD!**  
Shut down generator before changing voltage selector switch. Failure to comply could result in death or serious injury.

1319-0356 37

40  
**CPG 90**

120

Relay	Function
K 11	High Voltage shunt trip
K 12	Low Voltage shunt trip
K 13	Socket enable contactor

1319-0328 43

60

**WARNING**

**CALIFORNIA PROPOSITION 65 WARNING**  
Diesel engine exhaust and some of its constituents are known to the State of California to cause cancer, birth defects, and other reproductive harm.

1319-0324 31

130  
NEUTRAL GROUNDED

1319-0324 31

110  
15W 40 OIL

1319-0355 35

100

**CAUTION**

Coolant must meet ASTM D6210 OR ASTM D6211. Use of incorrect coolant will result in damage to the radiator and engine. Refer to the Instruction Manual.

1319-0351 36

## MARKINGS - CPG 90 - STANDARD

REF	PART NUMBER	DESIGNATION	QTY	REF	PART NUMBER	DESIGNATION	QTY	REF	PART NUMBER	DESIGNATION	QTY
40	1310 4172 00	LABEL MODEL DESIGNATION	2								
50	1310 0353 72	LABEL WARNING	1								
60	1310 3112 36	LABEL CALIFORNIA EMISSIONS	1								
90	1310 0356 37	LABEL WARNING ALTERNATOR	1								
100	1310 0356 95	LABEL	1								
110	1310 0356 38	LABEL	1								
120	1310 3124 68	LABEL CPG RELAY FUNCTION	1								
130	1310 3124 67	LABEL NEUTRAL GROUNDED	1								
140	1310 0313 24	LABEL CAUTION HOT EXHAUST	1								

**MARKINGS - CPG 120 - STANDARD**

**WARNING**

**SEVER HAZARD!**  
Machine can start automatically.  
Disconnect battery prior to servicing.  
Failure to comply can result in death or serious injury.

1310-0353-72

50

**CAUTION**

**BURN HAZARD!**  
Keep clear.  
Hot exhaust may burn.  
Failure to comply may result in moderate or minor injury.

1310-0353-72

140

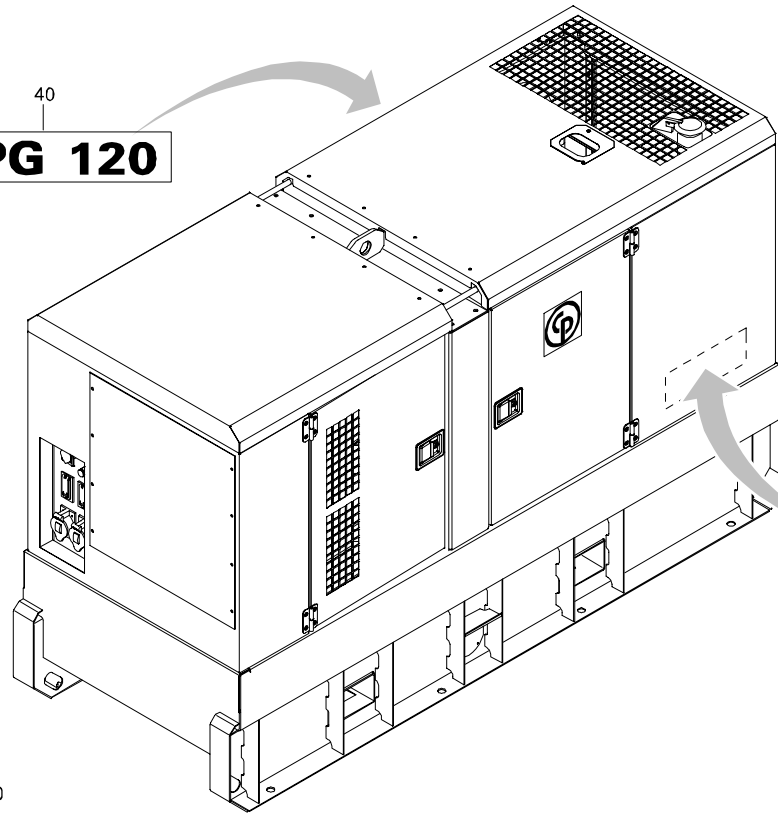
120

Relay	Function
K 11	High Voltage shunt trip
K 12	Low Voltage shunt trip
K 13	Socket enable contactor

1310-3228-05

40

**CPG 120**



90

**WARNING**

**FIRE HAZARD!**  
Shut down generator before changing voltage selector switch. Failure to comply could result in death or serious injury.

1310-0356-37

40

**CPG 120**

60

**WARNING**

**CALIFORNIA PROPOSITION 65 WARNING**  
Diesel engine exhaust and some of its constituents are known to the State of California to cause cancer, birth defects, and other reproductive harm.

1310-3228-05

130

NEUTRAL GROUNDED

1310-3228-05

110

15W 40 OIL

1310-0075-30

100

**CAUTION**

Coolant must meet ASTM D6210 OR ASTM D6211.  
Use of incorrect coolant will result in damage to the radiator and engine.  
Refer to the Instruction Manual.

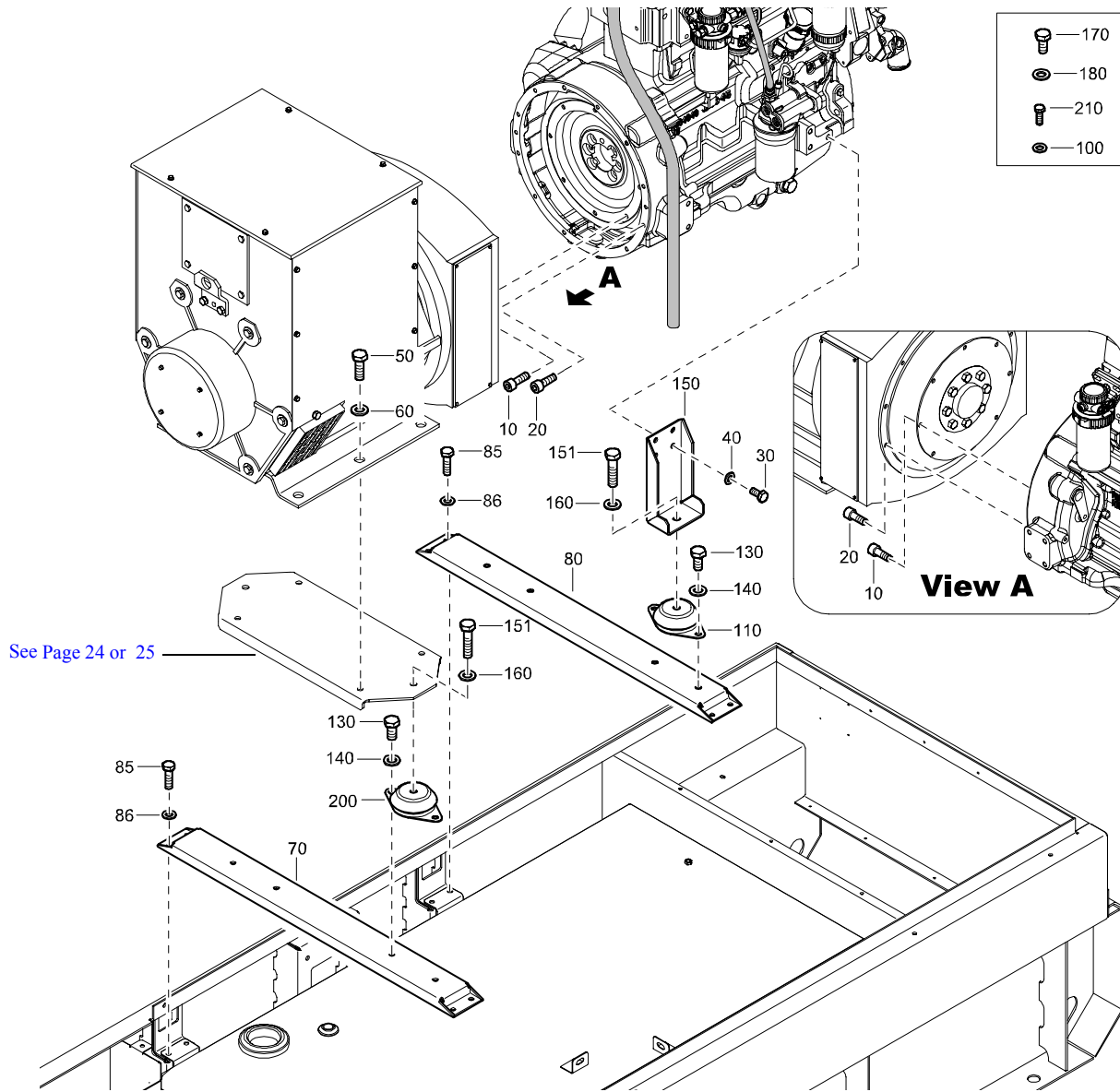
1310-0859-02



## MARKINGS - CPG 120 - STANDARD

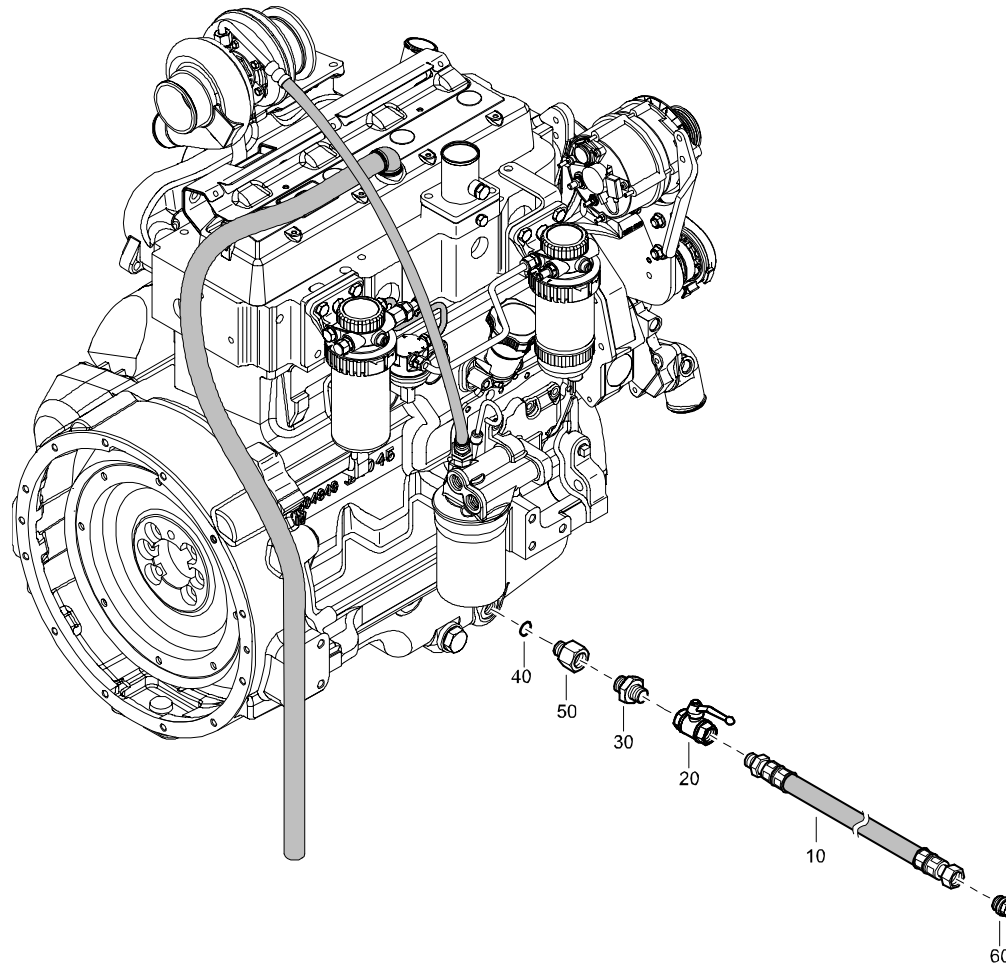
REF	PART NUMBER	DESIGNATION	QTY	REF	PART NUMBER	DESIGNATION	QTY	REF	PART NUMBER	DESIGNATION	QTY
40	1310 4172 10	LABEL MODEL DESIGNATION	2								
50	1310 0353 72	LABEL WARNING	1								
60	1310 3112 36	LABEL CALIFORNIA EMISSIONS	1								
90	1310 0356 37	LABEL WARNING ALTERNATOR	1								
100	1310 0356 95	LABEL	1								
110	1310 0356 38	LABEL	1								
120	1310 3124 68	LABEL CPG RELAY FUNCTION	1								
130	1310 3124 67	LABEL NEUTRAL GROUNDED	1								
140	1310 0313 24	LABEL CAUTION HOT EXHAUST	1								

# FRAME AND MOUNTS - STANDARD



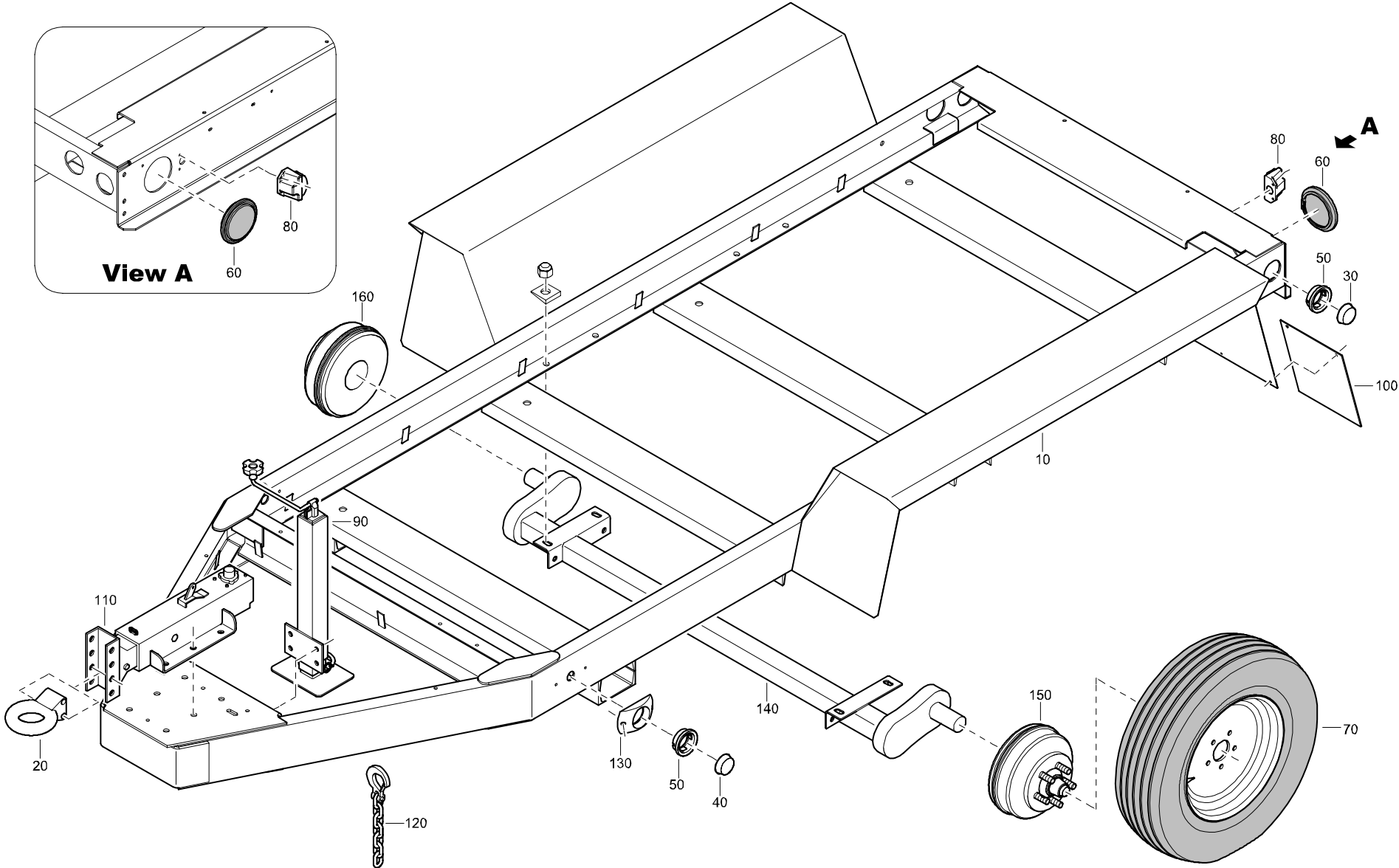
REF	PART NUMBER	DESIGNATION	QTY
10	0211 5287 00	SOC HD CAP SCREW	8
20	0211 1362 00	SOC HD CAP SCREW	12
30	0147 1400 03	HEX HD SCREW	6
40	0301 2358 00	FLAT WASHER	6
50	0147 1401 03	HEX HD SCREW	6
60	0301 2358 00	FLAT WASHER	6
70	1310 4421 00	SUPPORT CROSS RAIL	1
80	1310 4472 00	SUPPORT CROSS RAIL	1
85	0147 1363 03	HEX HD SCREW	8
86	0301 2344 00	FLAT WASHER	8
100	0301 2344 00	FLAT WASHER	4
110	1619 6517 01	RUBBER BUFFER	2
130	0147 1400 03	HEX HD SCREW	8
140	0301 2358 00	FLAT WASHER	8
150	1310 4400 00	MOUNT-ENGINE	2
151	0147 1404 03	HEX HD SCREW	8
160	0301 2358 00	FLAT WASHER	4
170	0147 1400 03	HEX HD SCREW	6
180	0301 2358 00	FLAT WASHER	6
200	1619 5044 00	VIBRATION MOUNT	2
210	1619 2766 00	TAP SCREW	5

## OIL SYSTEM - STANDARD



REF	PART NUMBER	DESIGNATION	QTY
10	1310 0353 82	HOSE ASY ENGINE OIL DRAIN	1
20	VAL02131	BALL VALVE	1
30	0603 0118 14	NIPPLE	1
40	0663 3122 00	O-RING	1
50	1310 0354 87	ADAPTER	1
60	1310 0355 25	PLUG	1

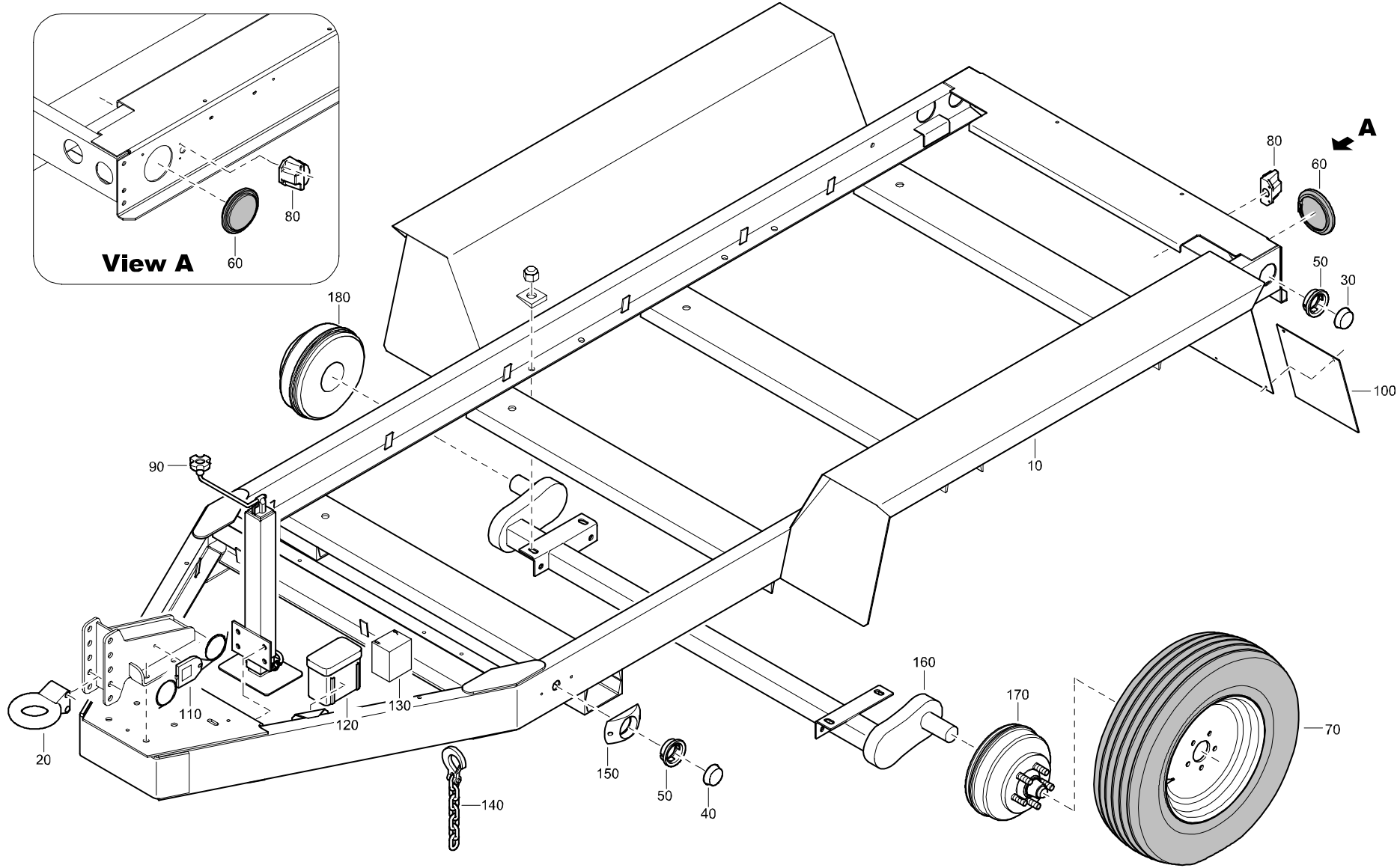
**TRAILER ASSEMBLY - HYDRAULIC BRAKE**



## TRAILER ASSEMBLY - HYDRAULIC BRAKE

REF	PART NUMBER	DESIGNATION	QTY	REF	PART NUMBER	DESIGNATION	QTY	REF	PART NUMBER	DESIGNATION	QTY
10	8070 2909 55	TRAILER-HYDRAULIC BRAKE	1								
20	1310 0346 73	TOWING EYE	1								
30	1310 0347 42	RED LIGHT	2								
40	1310 0347 43	YELLOW LIGHT	2								
50	1310 0346 89	GROMMET	4								
60	1310 0347 45	SEAL	2								
70	1310 0348 56	WHEEL-TIRE ASSY	4								
80	1310 0347 33	LAMP LICENSE PLATE	1								
90	1310 0347 11	JACK TONGUE	1								
100	1310 0347 65	MUDFLAP	2								
110	1310 0345 82	ACTUATOR	1								
120	1310 0346 45	SAFETY CHAIN	2								
130	1310 0362 73	MOUNT LIGHT	2								
140	1310 0305 28	AXEL ASSY	2								
150	1310 0305 30	BRAKE ASSY RH	2								
160	1310 0305 31	BRAKE ASSY LH	2								

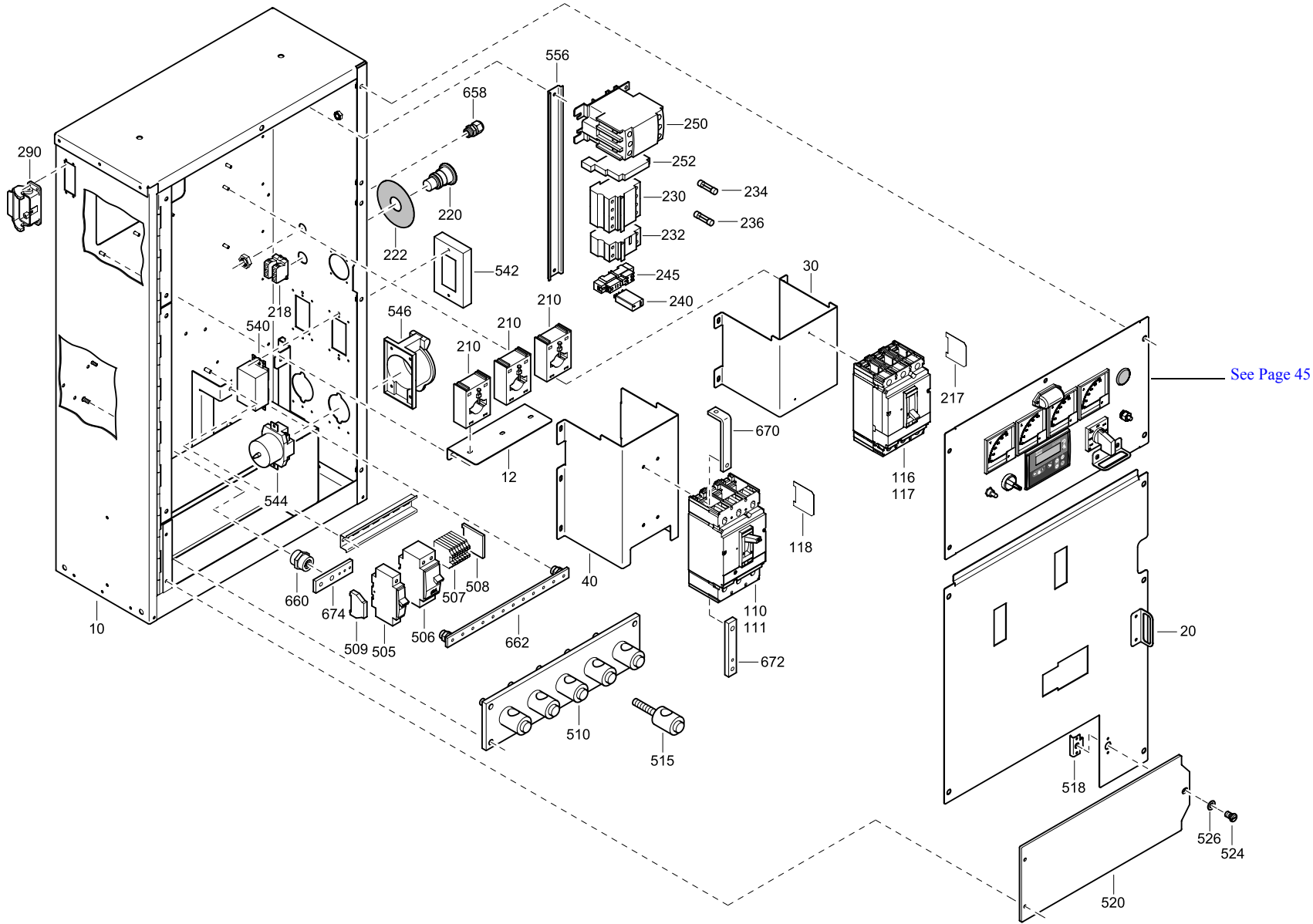
**TRAILER ASSEMBLY - ELECTRIC BRAKE**



## TRAILER ASSEMBLY - ELECTRIC BRAKE

REF	PART NUMBER	DESIGNATION	QTY	REF	PART NUMBER	DESIGNATION	QTY	REF	PART NUMBER	DESIGNATION	QTY
10	8070 2910 21	TRAILER ELECTRIC BRAKE	1								
20	1310 0346 73	TOWING EYE	1								
30	1310 0347 42	RED LIGHT	2								
40	1310 0347 43	YELLOW LIGHT	2								
50	1310 0346 89	GROMMET	4								
60	1310 0347 45	SEAL	2								
70	1310 0348 56	WHEEL-TIRE ASSY	4								
80	1310 0347 33	LAMP LICENSE PLATE	1								
90	1310 0347 11	JACK TONGUE	1								
100	1310 0347 65	MUDFLAP	1								
110	1310 0348 30	BREAKAWAY SWITCH	1								
120	1310 0351 44	BATTERY BOX	1								
130	1310 0351 45	BATTERY	1								
140	1310 0346 45	SAFETY CHAIN	2								
150	1310 0362 73	MOUNT LIGHT	2								
160	1310 0305 29	AXEL ASSY	2								
170	1310 0305 32	BRAKE ASSY RH	2								
180	1310 0305 33	BRAKE ASSY LH	2								

**CUBICLE ASSEMBLY - CPG 90 Jd - STANDARD**

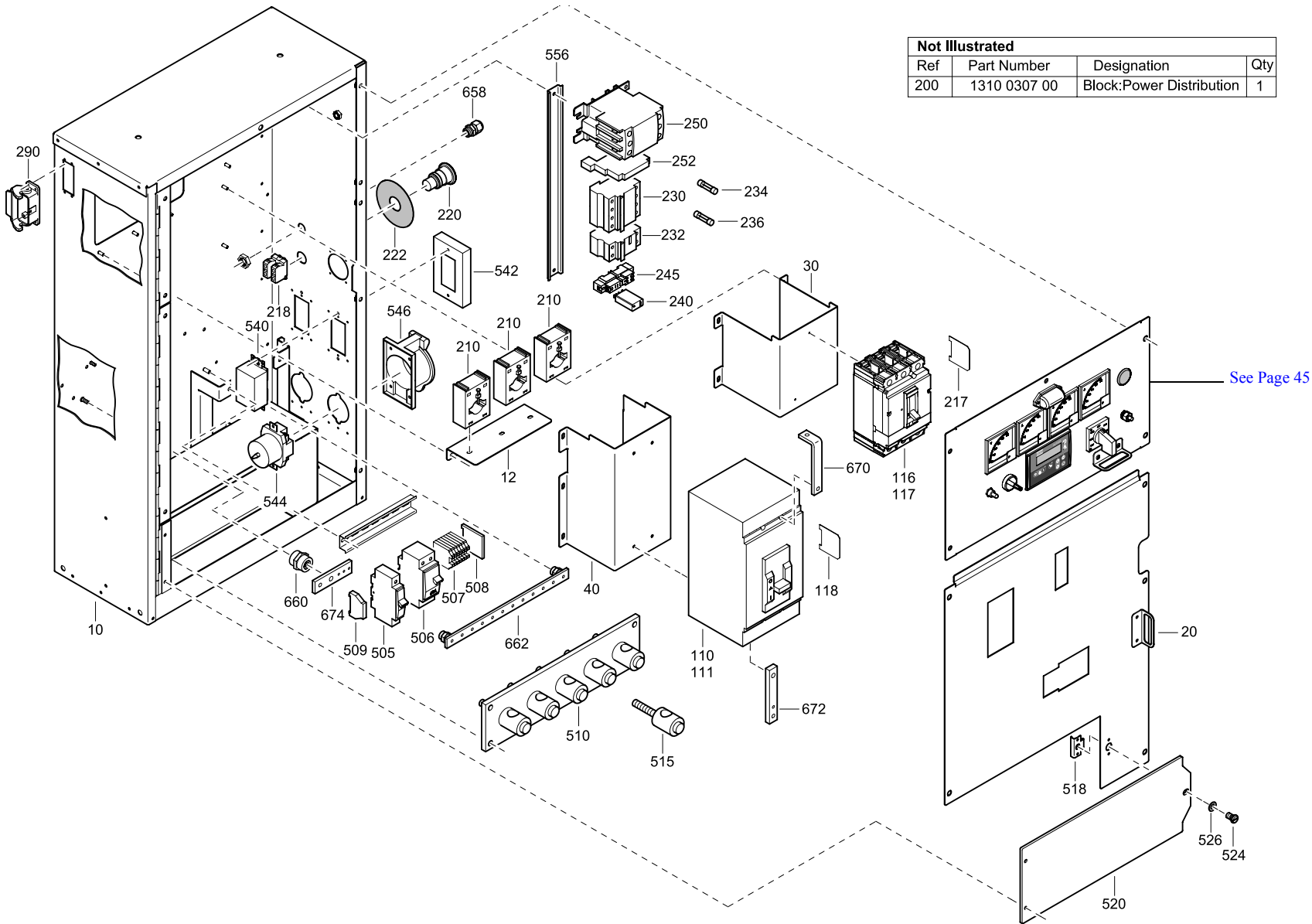




**CUBICLE ASSEMBLY - CPG 90 Jd - STANDARD**

REF	PART NUMBER	DESIGNATION	QTY	REF	PART NUMBER	DESIGNATION	QTY	REF	PART NUMBER	DESIGNATION	QTY
10	1310 4399 01	CUBICLE	1	662	1310 0306 61	ISOLATOR	1				
12	1310 4630 01	BRACKET	1	670	1310 0307 23	BUSBAR	3				
20	1310 4423 01	PANEL CUBICLE DOOR	1	672	1310 0307 20	BUSBAR	3				
30	1310 4402 01	SUPPORT BREAKER	1	674	1310 0307 21	BUSBAR	1				
40	1310 4422 01	BRACKET	1								
110	1310 0306 64	CIRCUIT BREAKER	1								
111	1310 0306 45	SHUNT TRIP	1								
116	1310 0307 24	CIRCUIT BREAKER	1								
117	1310 0306 45	SHUNT TRIP	1								
118	1310 0307 14	BARRIER	1								
210	1089 9484 65	TRANSFORMER	3								
217	1310 0307 22	BARRIER	1								
218	1310 0306 48	CONTACT BLOCK	1								
220	1310 0306 47	EMERGENCY STOP	1								
222	1310 0306 49	LABEL	1								
230	1310 0306 58	FUSEHOLDER	1								
232	1310 0306 59	FUSEHOLDER	1								
234	1310 0307 17	FUSE	3								
236	1310 0306 60	FUSE	2								
240	1310 0306 56	RELAY	2								
245	1310 0306 57	RELAY BASE	2								
250	1310 0306 50	CONTACTOR	1								
252	1310 0306 44	CONTACT AUXILIARY	1								
290	1088 0029 50	HOUSING	1								
505	1310 0306 51	CIRCUIT BREAKER	2								
506	1310 0306 52	CIRCUIT BREAKER	2								
507	1310 0306 53	TERMINAL BLOCK	5								
508	1310 0306 54	BARRIER TERMINAL BLOCK	1								
509	1310 0306 55	TERMINAL END STOP	2								
510	1615 8508 00	TERMINAL BOARD	1								
515	1615 8893 00	TERMINAL	5								
518	1615 6728 00	PLATE	1								
520	1626 2302 00	DOOR	1								
524	1615 7166 00	STUD	1								
526	1615 6727 00	WASHER	1								
540	1089 9412 01	RECEPTACLE	2								
542	1089 9412 11	PROTECTION	2								
544	1089 9412 02	RECEPTACLE	2								
546	1089 9412 12	PROTECTION	2								
556	0993 7106 00	RAIL DIN MOUNTING	AR								
658	0698 5140 71	CABLE GLAND	1								
660	1089 9385 03	ISOLATOR	1								

**CUBICLE ASSEMBLY - CPG 120 Jd - STANDARD**

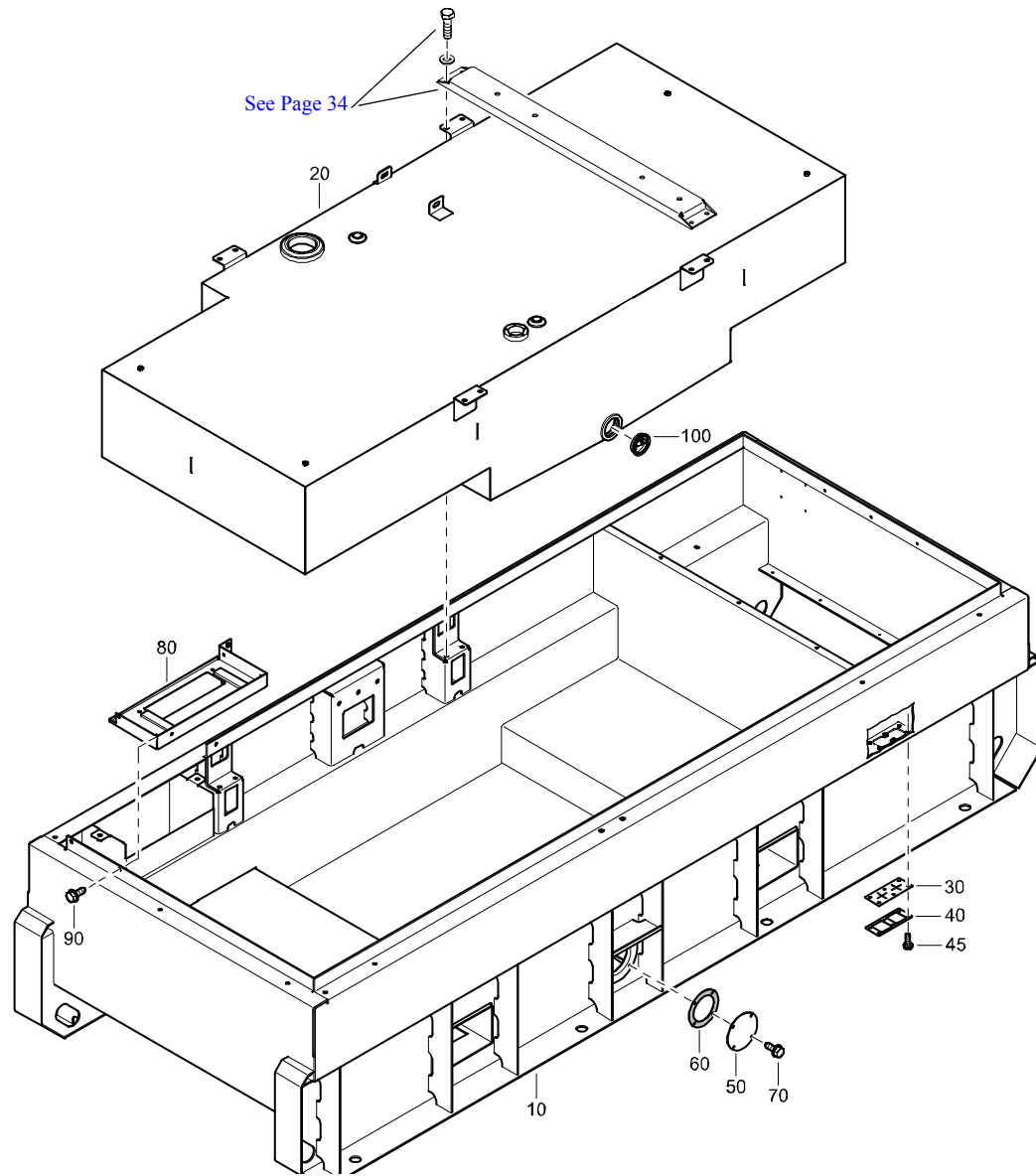


Not Illustrated			
Ref	Part Number	Designation	Qty
200	1310 0307 00	Block:Power Distribution	1

**CUBICLE ASSEMBLY - CPG 120 Jd - STANDARD**

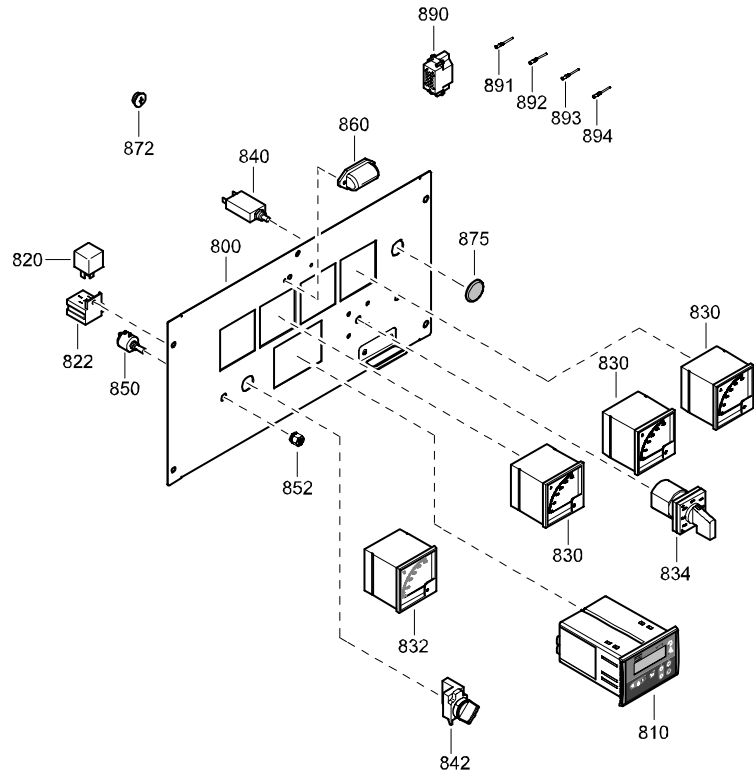
REF	PART NUMBER	DESIGNATION	QTY	REF	PART NUMBER	DESIGNATION	QTY	REF	PART NUMBER	DESIGNATION	QTY
10	1310 4399 01	CUBICLE	1	662	1310 0306 61	ISOLATOR	1				
12	1310 4630 01	BRACKET	1	670	1310 0307 19	BUSBAR	3				
20	1310 4401 01	PANEL CUBICLE DOOR	1	672	1310 0307 20	BUSBAR	3				
30	1310 4402 01	SUPPORT BREAKER	1	674	1310 0307 21	BUSBAR	1				
40	1310 4403 01	SUPPORT BREAKER	1								
110	1310 0306 46	CIRCUIT BREAKER	1								
111	1310 0306 45	SHUNT TRIP	1								
116	1310 0306 43	CIRCUIT BREAKER	1								
117	1310 0306 45	SHUNT TRIP	1								
118	1310 0307 15	BARRIER	1								
200	1310 0307 00	BLOCK	1								
210	1089 9484 65	TRANSFORMER	3								
218	1310 0306 48	CONTACT BLOCK	1								
220	1310 0306 47	EMERGENCY STOP	1								
222	1310 0306 49	LABEL EMERGENCY STOP	1								
230	1310 0306 58	FUSEHOLDER	1								
232	1310 0306 59	FUSEHOLDER	1								
234	1310 0307 17	FUSE	3								
236	1310 0306 60	FUSE	2								
240	1310 0306 56	RELAY	2								
245	1310 0306 57	RELAY BASE	2								
250	1310 0306 50	CONTACTOR	1								
252	1310 0306 44	CONTACT AUXILIARY	1								
290	1088 0029 50	HOUSING	1								
505	1310 0306 51	CIRCUIT BREAKER	2								
506	1310 0306 52	CIRCUIT BREAKER	2								
507	1310 0306 53	TERMINAL BLOCK	5								
508	1310 0306 54	BARRIER TERMINAL BLOCK	1								
509	1310 0306 55	TERMINAL END STOP	2								
510	1615 8508 00	TERMINAL BOARD	1								
515	1615 8893 00	TERMINAL	5								
518	1615 6728 00	PLATE	1								
520	1626 2302 00	DOOR	1								
524	1615 7166 00	STUD	1								
526	1615 6727 00	WASHER	1								
540	1089 9412 01	RECEPTACLE	2								
542	1089 9412 11	PROTECTION	2								
544	1089 9412 02	RECEPTACLE	2								
546	1089 9412 12	PROTECTION	2								
556	0993 7106 00	RAIL DIN MOUNTING	AR								
658	0698 5140 71	CABLE GLAND	1								
660	1089 9385 03	ISOLATOR	1								

# FRAME TANK ASSEMBLY - STANDARD



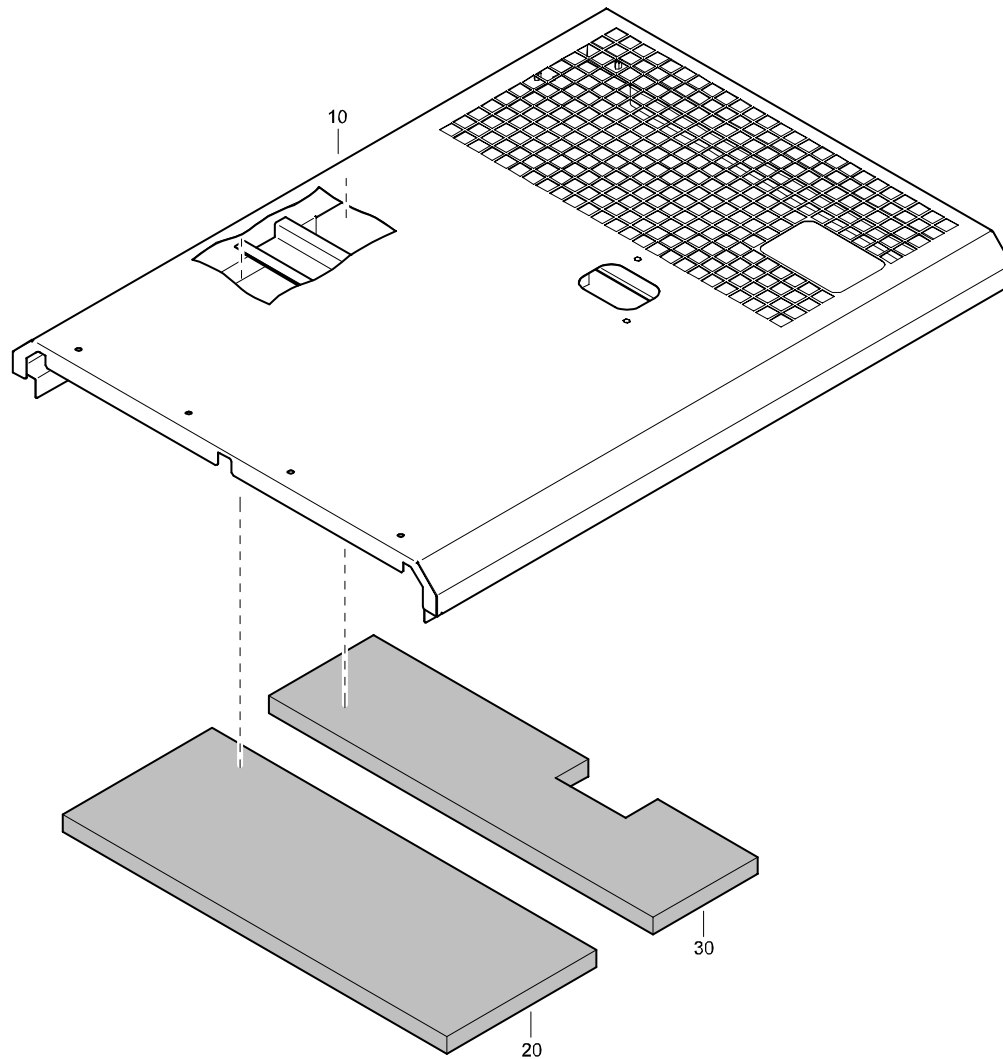
REF	PART NUMBER	DESIGNATION	QTY
-	1310 3124 86	FRAME TANK ASSEMBLY (From page 26)	
10	1310 4420 00	FRAME	1
20	1310 4396 00	FUEL TANK	1
30	1310 4368 00	GASKET	1
40	1310 4367 00	PLATE	1
45	1619 5898 01	HEX HEAD SCREW	6
50	1310 4479 00	COVER-DRAIN	1
60	1310 4637 00	GASKET	1
70	1619 2766 00	HEX HEAD SCREW	4
80	1310 4541 00	MOUNT CUBICLE	1
90	1619 2766 00	HEX HEAD SCREW	3
100	1310 0306 26	PLUG	3

# CONTROL PANEL ASSEMBLY - STANDARD



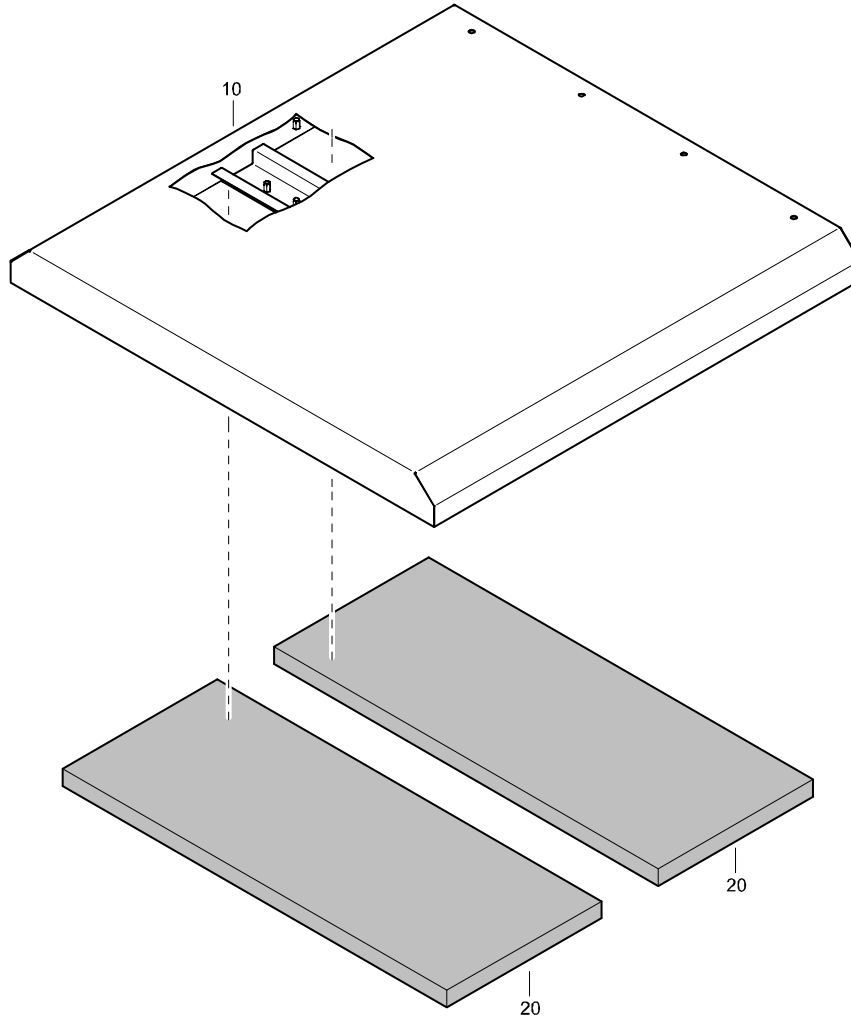
REF	PART NUMBER	DESIGNATION	QTY
-		CONTROL PANEL ASSY	
		(From page 40, 42)	
800	1310 4369 01	PANEL	1
810	1604 9418 00	CONTROLLER	1
820	1310 0306 62	RELAY	2
822	1310 0306 63	RELAY BASE	2
830	1089 9381 18	AMMETER	3
832	1089 9383 01	VOLTMETER	1
834	1089 9082 22	SWITCH	1
840	1089 9423 01	FUSE	1
842	1089 0263 27	SELECTOR SWITCH	1
850	1089 9371 21	POTMETER	1
852	1089 9371 50	LOCK	1
860	1310 0307 18	LIGHT	1
872	0697 9810 58	PLUG	1
875	1310 0307 16	PLUG	1
890	1088 0029 45	INSERT MALE	1
891	1088 0029 57	CONTACT MALE	2
892	1088 0029 61	CONTACT MALE	5
893	1088 0029 56	CONTACT MALE	1
894	1088 0029 55	CONTACT MALE	3

# FRONT ROOF ASSEMBLY - STANDARD



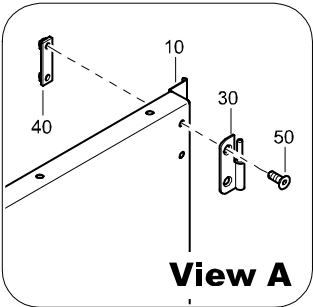
REF	PART NUMBER	DESIGNATION	QTY
-	1310 4370 80	PANEL-ROOF ASSY FRONT (From page 26)	
10	1310 4370 00	ROOF PANEL	1
20	1310 0370 08	INSULATION ROOF	1
30	1310 0370 09	INSULATION ROOF	1

# REAR ROOF ASSEMBLY - STANDARD

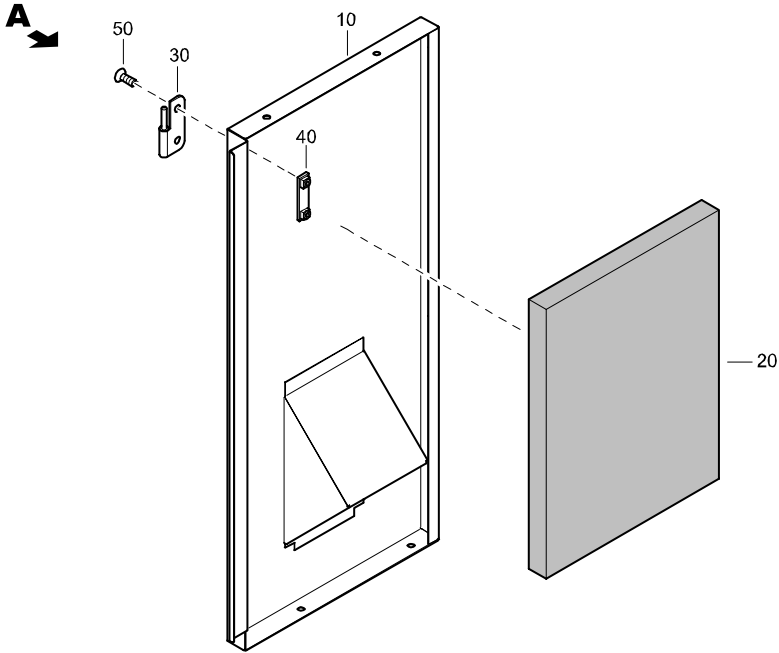


REF	PART NUMBER	DESIGNATION	QTY
-	1310 4371 80	PANEL-ROOF ASSY FRONT (From page 26)	
10	1310 4371 00	PANEL ROOF REAR	1
20	1310 0370 10	INSULATION ROOF	2

**SIDE PANEL ASSEMBLY - STANDARD**

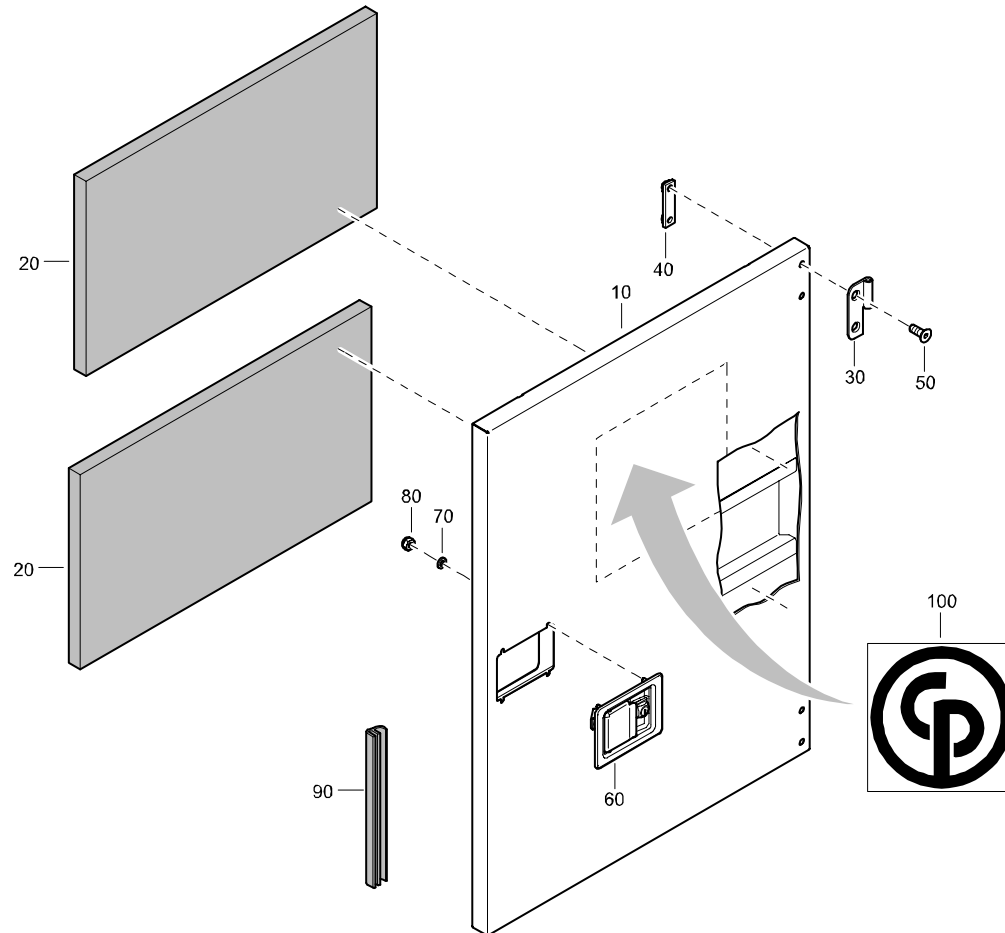


REF	PART NUMBER	DESIGNATION	QTY
-	1310 4374 80	PANEL-SIDE ASSY (From page 26)	
10	1310 4374 00	SIDE PANEL	1
20	1310 0370 15	INSULATION	1
30	1615 5686 01	HINGE	2
40	1615 5684 00	BRACKET	2
50	0216 1324 03	SOC HD CAP SCREW	4



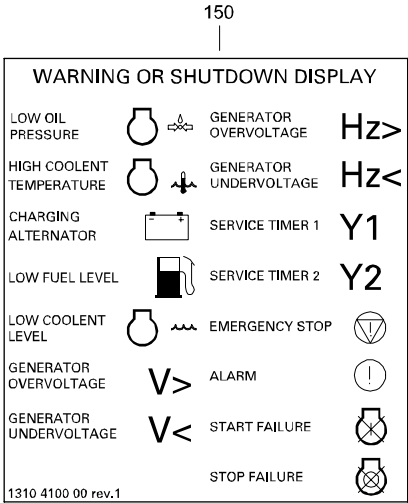
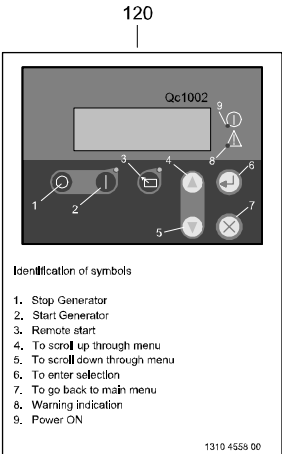
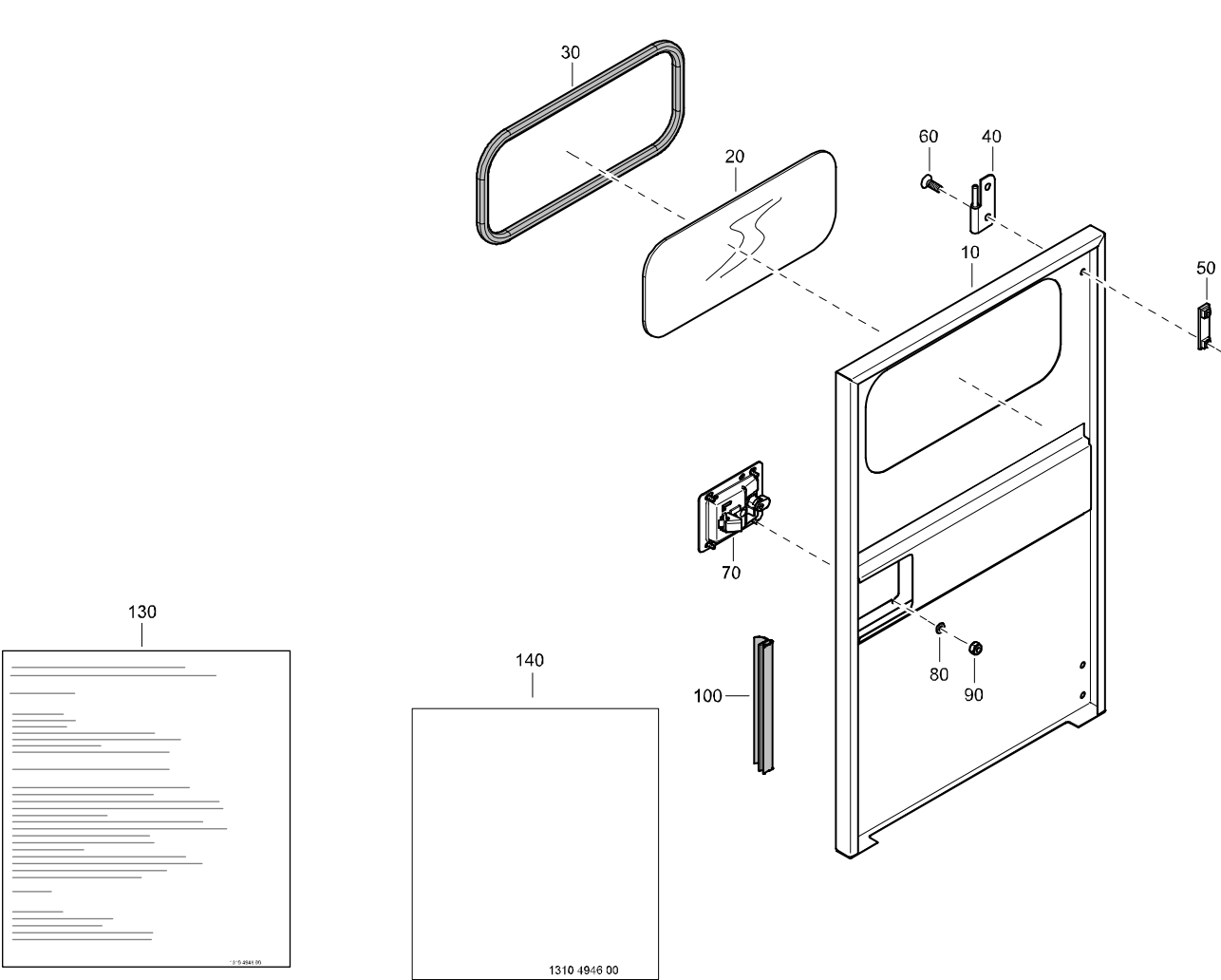


# DOOR-LARGE ASSEMBLY - STANDARD



REF	PART NUMBER	DESIGNATION	QTY
-	1310 4375 80	DOOR-LARGE ASSY L (From page 26)	
10	1310 4375 00	DOOR-LARGE L&R	1
20	1310 0370 16	INSULATION	2
30	1615 5685 01	HINGE	2
40	1615 5684 00	BRACKET	2
50	0216 1324 03	SOC HD CAP SCREW	4
60	1615 6967 03	HANDLE	1
70	0301 2321 00	FLAT WASHER	4
80	0291 1108 00	LOCKNUT	4
90	1619 2665 00	SEAL	AR
100	1310 4474 00	CP LOGO	1

**CUBICLE DOOR ASSEMBLY - STANDARD**

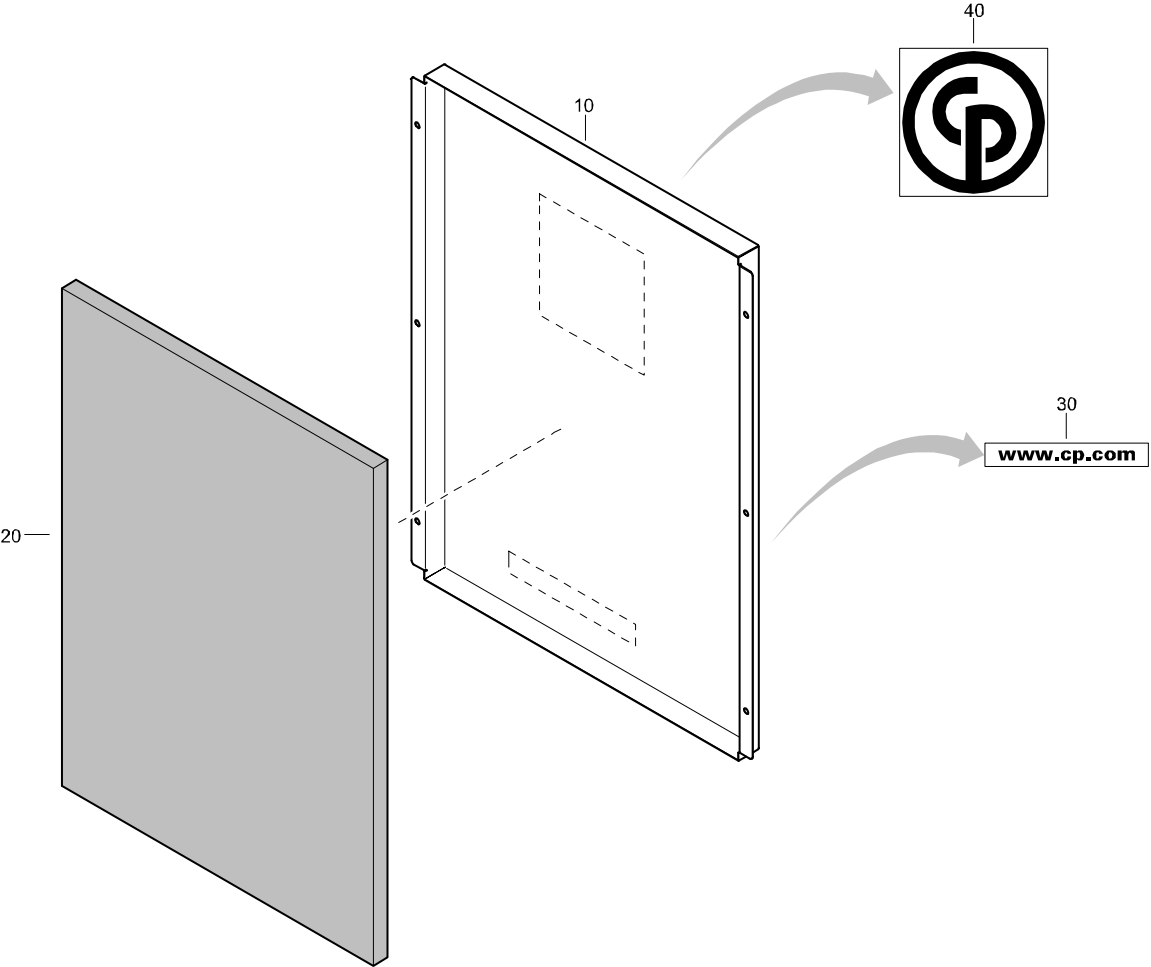


## CUBICLE DOOR ASSEMBLY - STANDARD

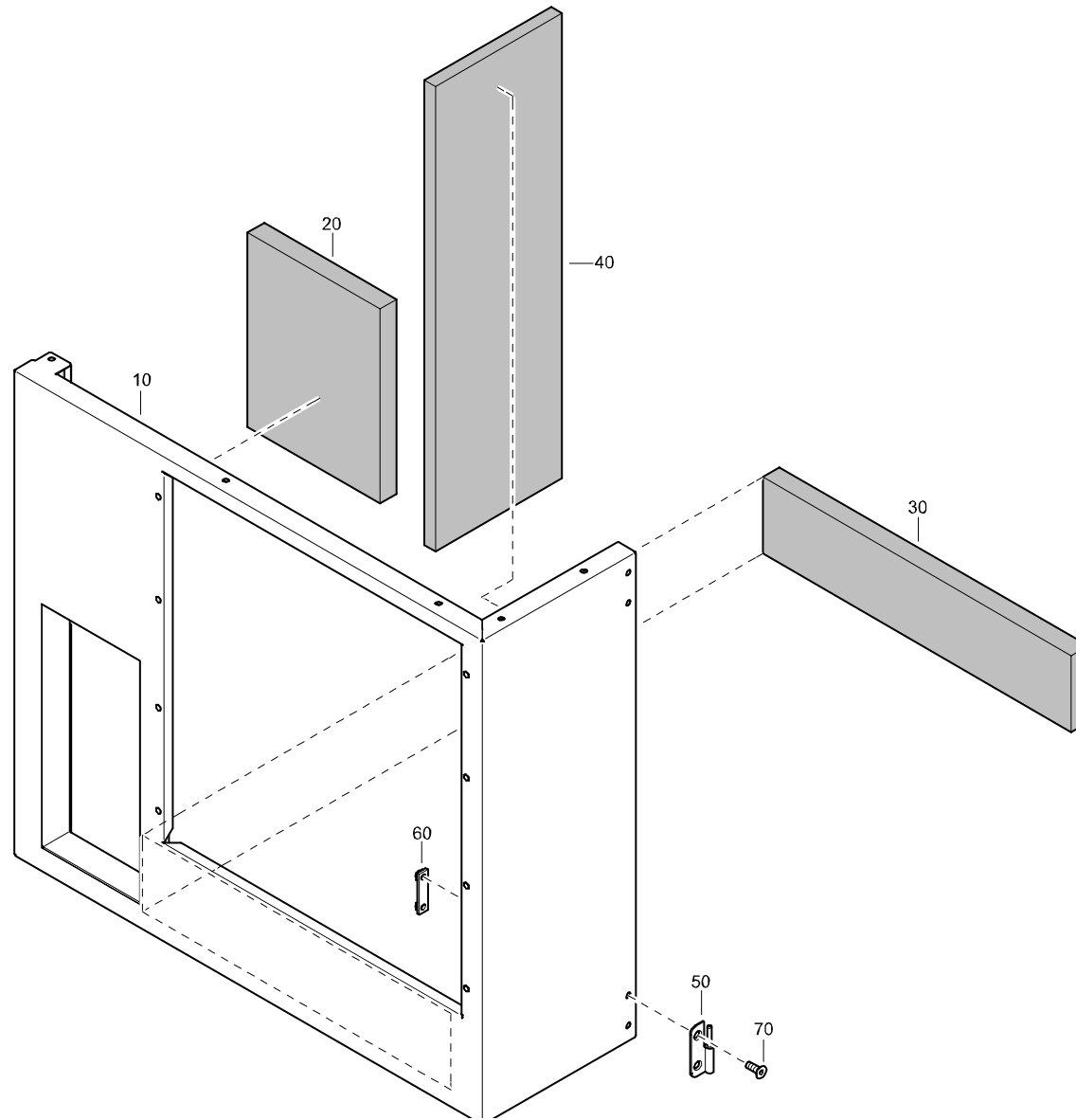
REF	PART NUMBER	DESIGNATION	QTY	REF	PART NUMBER	DESIGNATION	QTY	REF	PART NUMBER	DESIGNATION	QTY
-	1310 4377 80	DOOR-CUBICLE ASSY <a href="#">(From page 26)</a>									
10	1310 4377 00	DOOR-CUBICLE	1								
20	1310 4048 00	WINDOW	1								
30	1310 4049 00	SEAL	AR								
40	1615 5685 01	HINGE	2								
50	1615 5684 00	BRACKET	2								
60	0216 1324 03	SOC HD CAP SCREW	4								
70	1615 6967 03	HANDLE	1								
80	0301 2321 00	FLAT WASHER	4								
90	0291 1108 00	LOCKNUT	4								
100	1619 2665 00	SEAL	AR								
120	1310 4558 00	LABEL OPERATING INSTRUCTION	1								
130	1310 4946 00	LABEL OPERATING INSTRUCTION	1								
140	1310 4946 00	LABEL OPERATING INSTRUCTION	1								
150	1310 4100 00	LABEL OPERATING	1								

**FRONT PANEL ASSEMBLY - STANDARD**

REF	PART NUMBER	DESIGNATION	QTY
-	1310 4378 80	PANEL-FRONT ASSY (From page 26)	
10	1310 4378 00	FRONT PANEL	1
20	1310 0370 18	INSULATION	1
30	1310 0357 35	LABEL CP INTERNET ADDRESS	1
40	1310 4474 00	CP LOGO	1

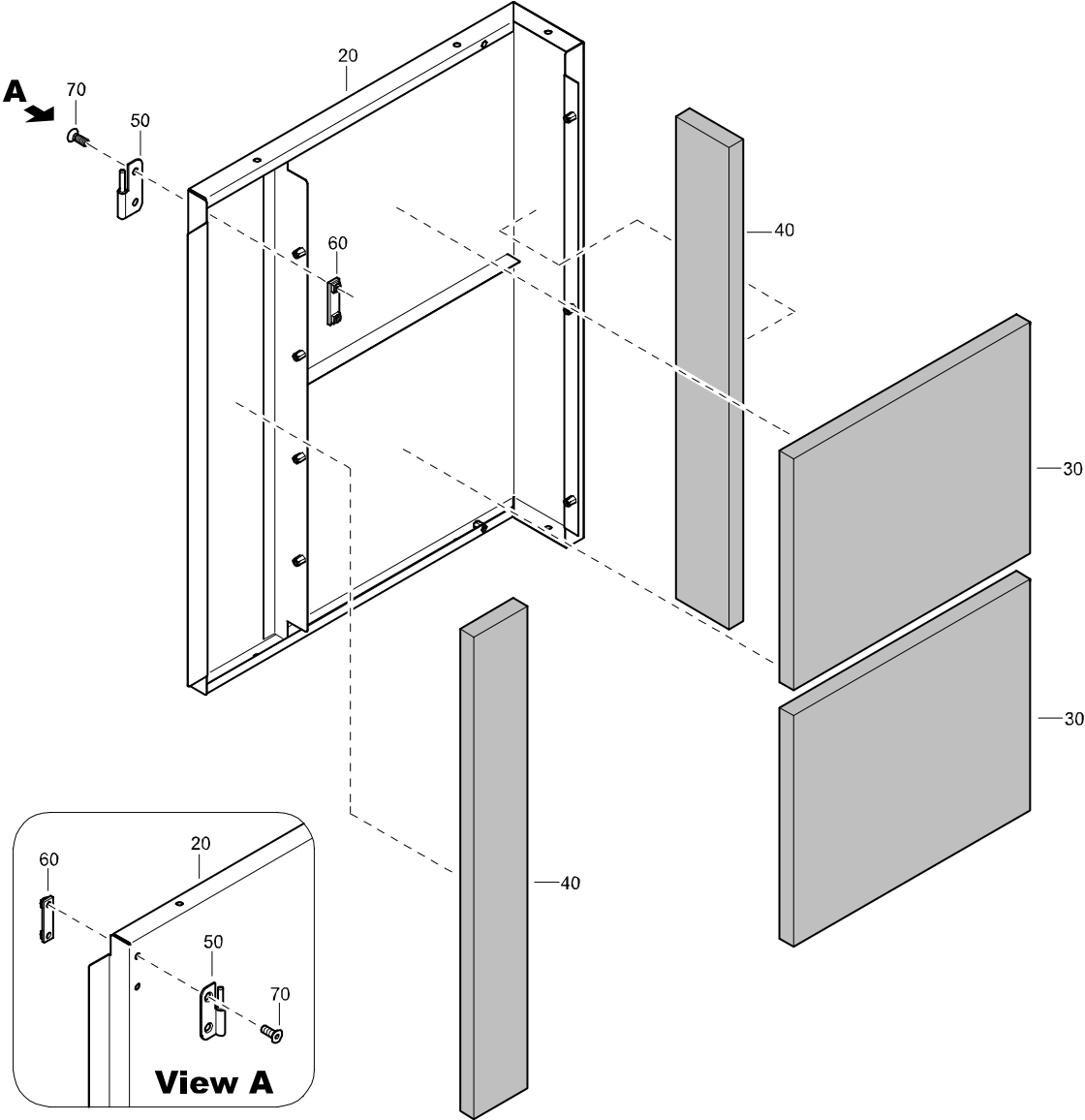


# REAR PANEL ASSEMBLY - STANDARD



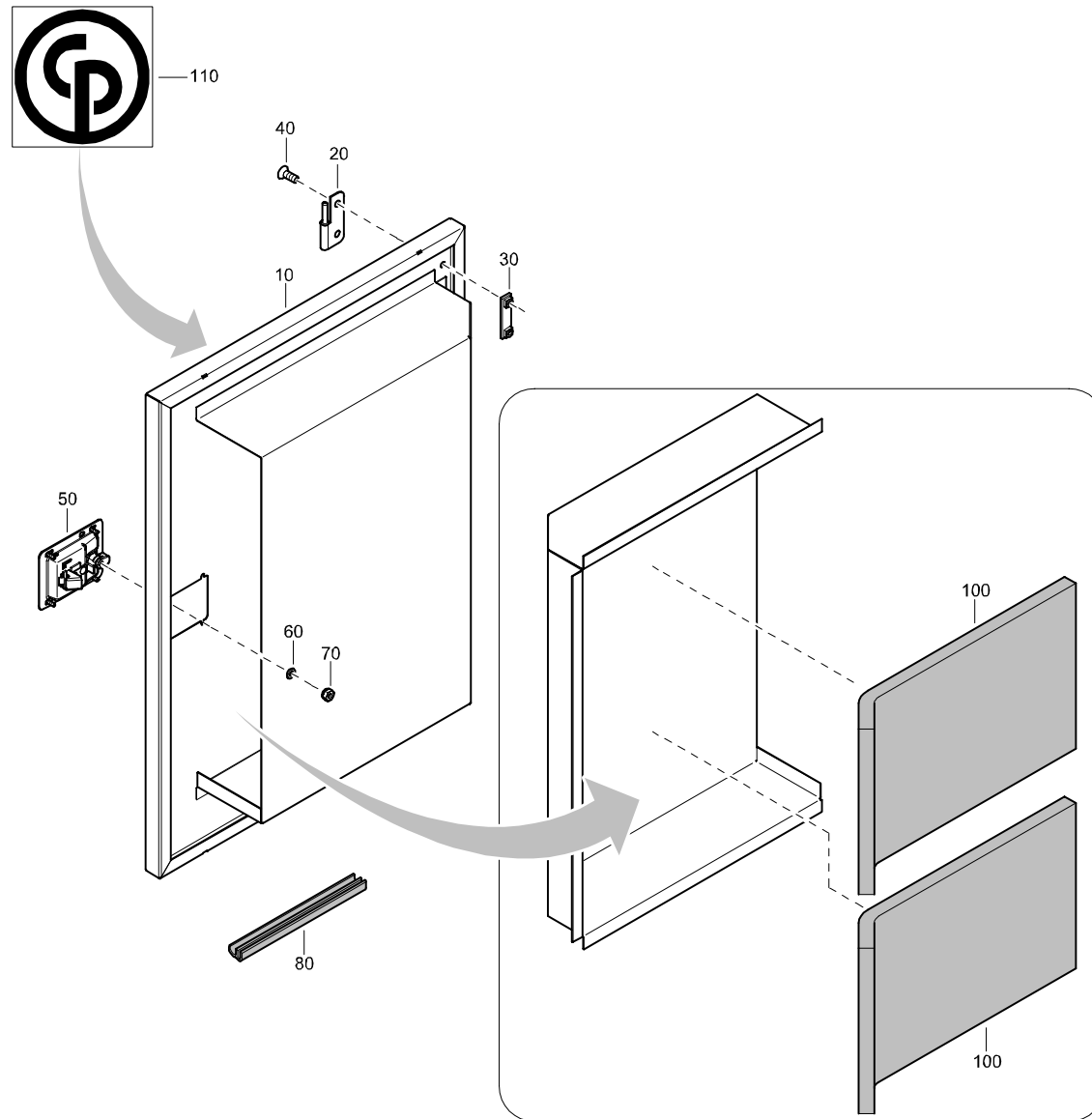
REF	PART NUMBER	DESIGNATION	QTY
-	1310 4379 80	PANEL-REAR ASSY (From page 26)	
10	1310 4379 00	PANEL-REAR	1
20	1310 0370 19	INSULATION	2
30	1310 0370 20	INSULATION	1
40	1310 0370 21	INSULATION	1
50	1615 5686 01	HINGE	2
60	1615 5684 00	BRACKET	2
70	0216 1324 03	SOC HD CAP SCREW	4

**FRONT CORNER ASSEMBLY - STANDARD**



REF	PART NUMBER	DESIGNATION	QTY
-	1310 4380 80	CORNER FRONT R (From page 26)	
20	1310 4380 00	PANEL CORNER	1
30	1310 0370 13	INSULATION CORNER PANEL	2
40	1310 0370 14	INSULATION CORNER PANEL	2
50	1615 5686 01	HINGE	2
60	1615 5684 00	BRACKET	2
70	0216 1324 03	SOC HD CAP SCREW	4

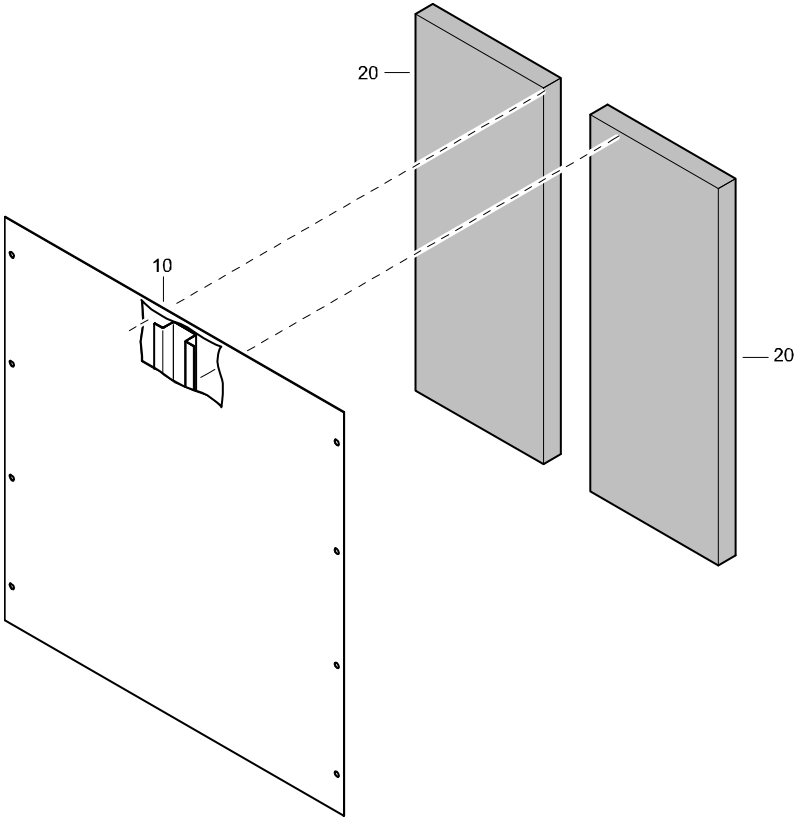
# VENT FRONT DOOR - STANDARD



REF	PART NUMBER	DESIGNATION	QTY
-	1310 4412 80	DOOR VENT FRONT (From page 26)	
10	1310 4412 00	DOOR VENTS	1
20	1615 5685 01	HINGE	2
30	1615 5684 00	BRACKET	2
40	0216 1324 03	SOC HD CAP SCREW	4
50	1615 6967 03	HANDLE	1
60	0301 2321 00	FLAT WASHER	4
70	0291 1108 00	LOCKNUT	4
80	1619 2665 00	SEAL	AR
100	1310 4412 61	INSULATION DOOR	1
110	1310 4474 00	CP LOGO	1

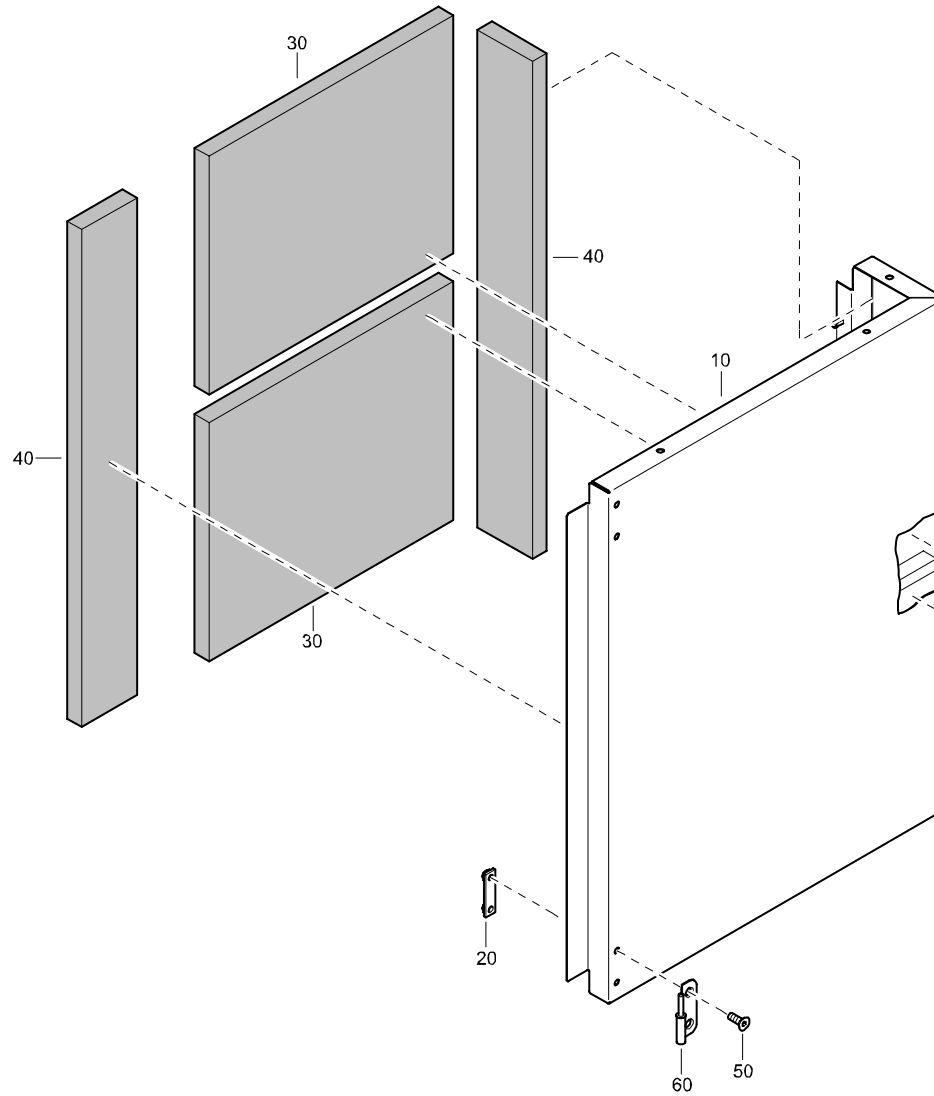
**REAR PANEL ASSEMBLY - STANDARD**

REF	PART NUMBER	DESIGNATION	QTY
-	1310 4528 80	PANEL ASSY REAR (From page 26)	
10	1310 4528 00	REAR PANEL	1
20	1310 4528 15	FOAM REAR PANEL	2
30	0690 1140 00	LABEL LOGO	1
40	1310 0357 17	LABEL AC INTERNET ADDRESS	1



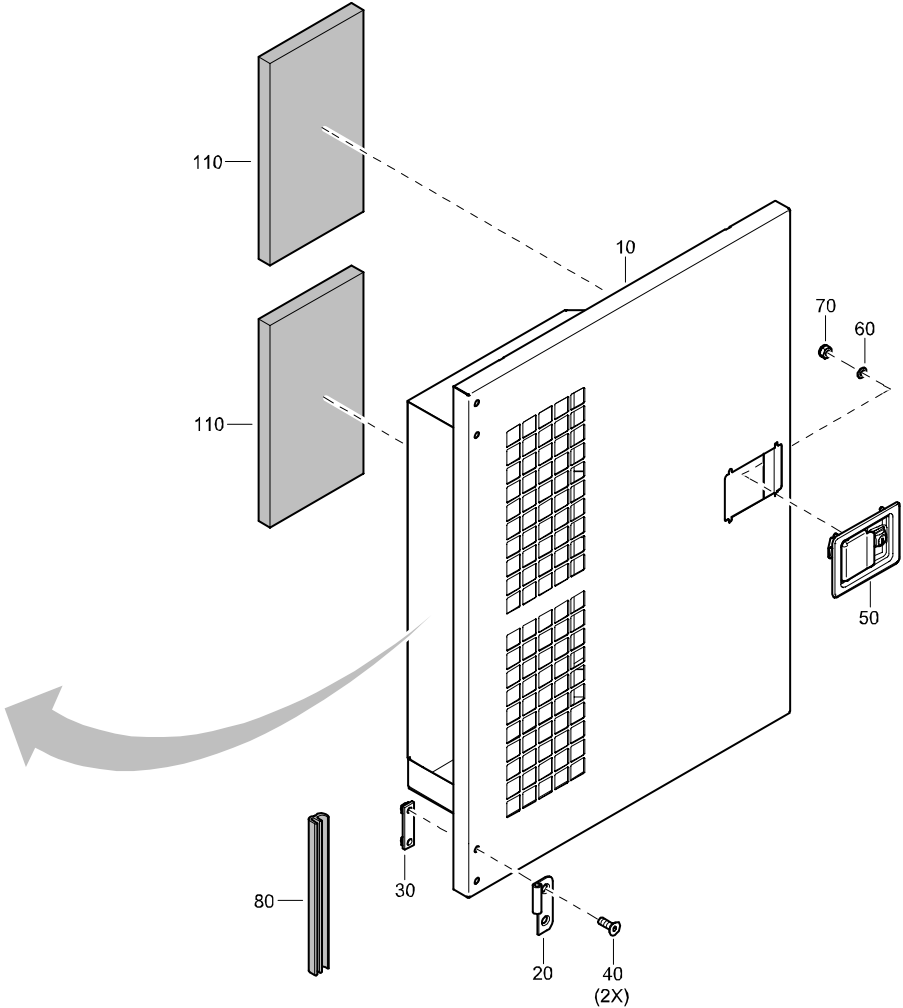
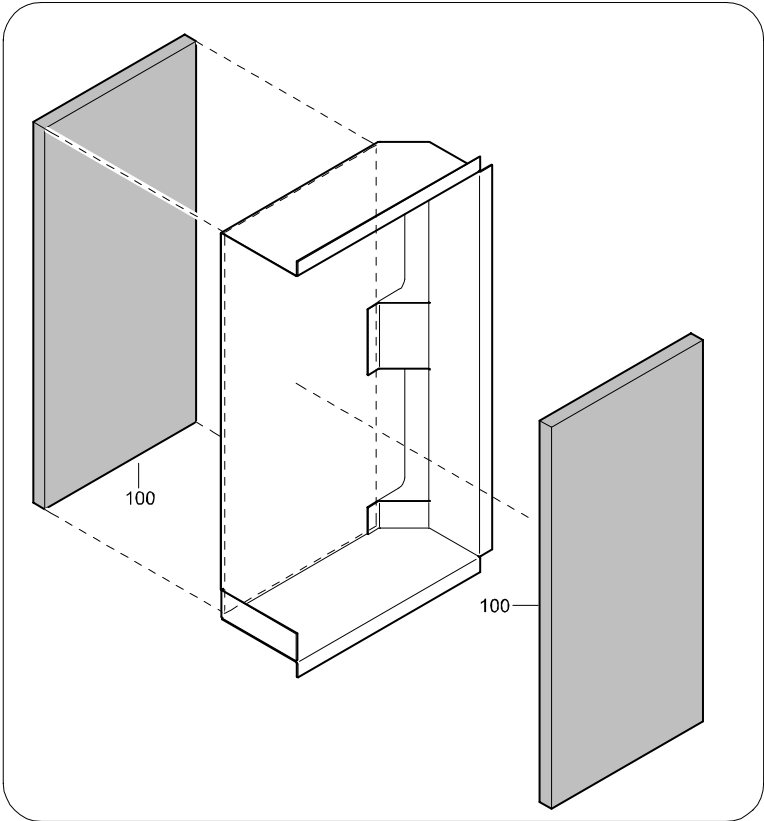


**FRONT CORNER ASSEMBLY - STANDARD**



REF	PART NUMBER	DESIGNATION	QTY
-	1310 4542 80	CORNER FRONT L (From page 26)	
10	1310 4380 00	CORNER PANEL	1
20	1615 5684 00	BRACKET	2
30	1310 0370 13	INSULATION	2
40	1310 0370 14	INSULATION	2
50	0216 1324 03	SOC HD CAP SCREW	4
60	1604 3430 00	HINGE	2

**VENT REAR DOOR - STANDARD**



## VENT REAR DOOR - STANDARD

REF	PART NUMBER	DESIGNATION	QTY	REF	PART NUMBER	DESIGNATION	QTY	REF	PART NUMBER	DESIGNATION	QTY
-	1310 4506 80	DOOR VENT REAR				(From page 26)					
10	1310 4506 00	DOOR	1								
20	1615 5685 01	HINGE	2								
30	1615 5684 00	BRACKET	2								
40	0216 1324 03	SOC HD CAP SCREW	4								
50	1615 6967 03	HANDLE	1								
60	0301 2321 00	FLAT WASHER	4								
70	0291 1108 00	LOCKNUT	4								
80	1619 2665 00	SEAL	AR								
100	1310 4506 61	INSULATION	2								
110	1310 4506 62	INSULATION	2								





