



# SPARE PARTS LIST

SURFACE PREPARATION EQUIPMENT

PG 280, serial number 1-147, 2008-09

Go to [Discount-Equipment.com](http://Discount-Equipment.com) to order your parts



# PARTS FINDER

**Search Website  
by Part Number**



**Search Manual  
Library For Parts  
Manual & Lookup Part  
Numbers – Purchase  
or Request Quote**

**Search Manuals**

Enter your information to help us find the right parts manual for your machine.

\* Brand:

\* Model:

\* Serial:

\* Part Number:

SEARCH

**Can't Find Part or  
Manual? Request Help  
by Manufacturer,  
Model & Description**

**Parts Order Form**

Please fill in the following information to help us find the right part for your machine.

Manufacturer:	<input type="text"/>
Model:	<input type="text"/>
Description:	<input type="text"/>
Part Number:	<input type="text"/>
Quantity:	<input type="text"/>
Notes:	<input type="text"/>

Submit

Discount-Equipment.com is your online resource for quality parts & equipment.

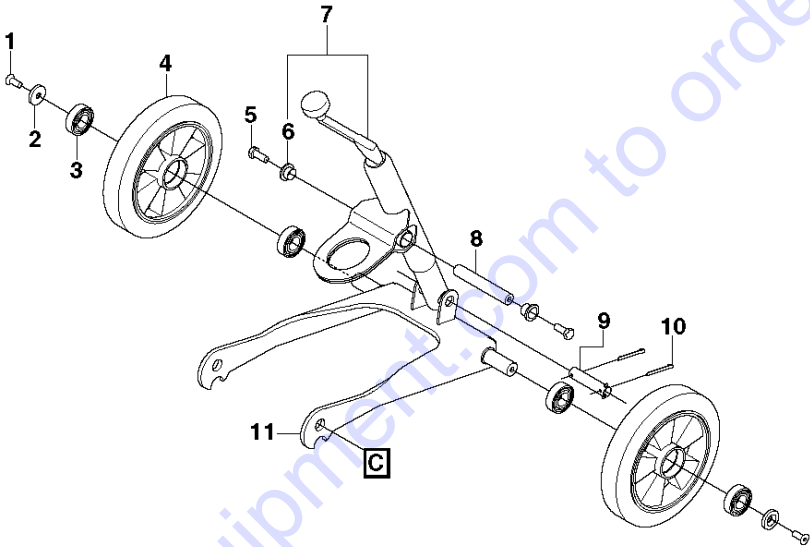
Florida: **561-964-4949** Outside Florida TOLL FREE: **877-690-3101**

**Need parts?**

Click on this link: <http://www.discount-equipment.com/category/5443-parts/> and choose one of the options to help get the right parts and equipment you are looking for. Please have the machine model and serial number available in order to help us get you the correct parts. If you don't find the part on the website or on one of the online manuals, please fill out the request form and one of our experienced staff members will get back to you with a quote for the right part that your machine needs.

We sell worldwide for the brands: Genie, Terex, JLG, MultiQuip, Mikasa, Essick, Whiteman, Mayco, Toro Stone, Diamond Products, Generac Magnum, Airman, Haulotte, Barreto, Power Blanket, Nifty Lift, Atlas Copco, Chicago Pneumatic, Allmand, Miller Curber, Skyjack, Lull, Skytrak, Tsurumi, Husquvarna Target, Stow, Wacker, Sakai, Mi-T-M, Sullair, Basic, Dynapac, MBW, Weber, Bartell, Bennar Newman, Haulotte, Ditch Runner, Menegotti, Morrison, Contec, Buddy, Crown, Edco, Wyco, Bomag, Laymor, EZ Trench, Bil-Jax, F.S. Curtis, Gehl Pavers, Heli, Honda, ICS/PowerGrit, IHI, Partner, Imer, Clipper, MMD, Koshin, Rice, CH&E, General Equipment, Amida, Coleman, NAC, Gradall, Square Shooter, Kent, Stanley, Tamco, Toku, Hatz, Kohler, Robin, Wisconsin, Northrock, Oztec, Toker TK, Rol-Air, APT, Wylie, Ingersoll Rand / Doosan, Innovatech, Con X, Ammann, Mecalac, Makinex, Smith Surface Prep, Small Line, Wanco, Yanmar

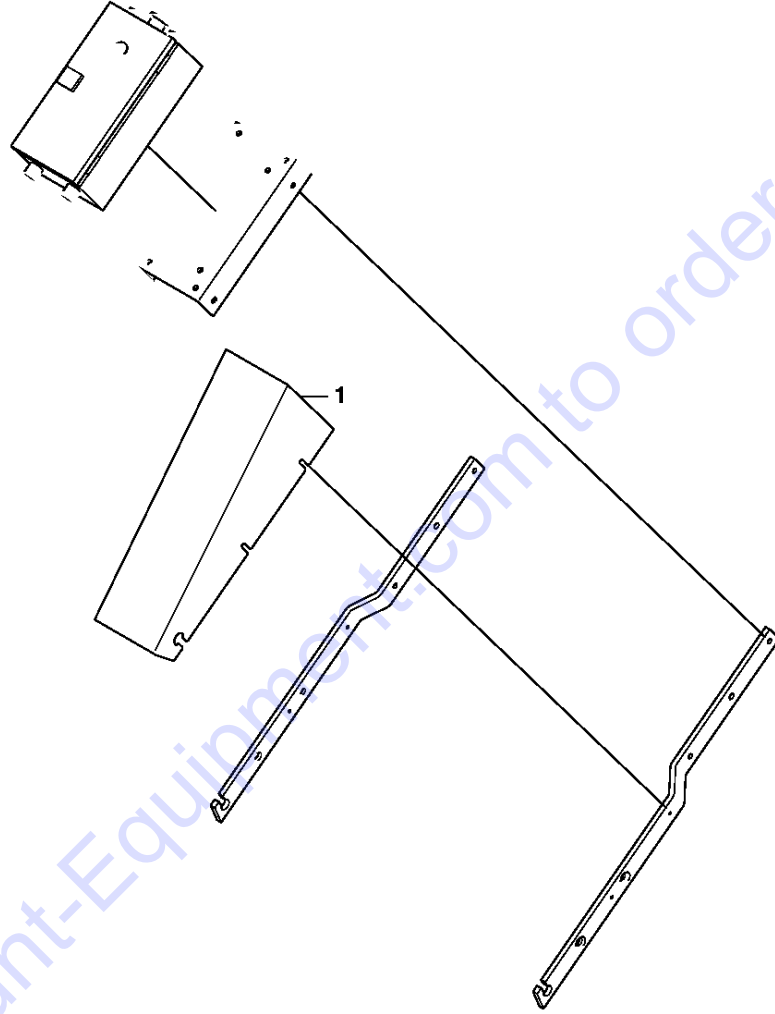
**B**



Ref	Part No	Description	Remark	QTY KIT
1	725 64 93-55	SCREW IHCSFM		2
2	510 21 51-01	WASHER		2
3	510 21 49-01	WHEEL		2
4	522 51 93-01	BALL BEARING		4
5	725 64 93-55	SCREW IHCSFM		2
6	510 21 75-01	BUSHING		2 7
7	510 21 68-01	ADJUSTING SCREW		1
8	510 21 77-01	SHAFT PIVOT		1
9	510 21 57-01	LOCKING PIN		1
10	721 62 18-01	PIN		2
11	510 21 43-01	CHASSIS		1

Go to Discount-Equipment.com to order your parts

**D**

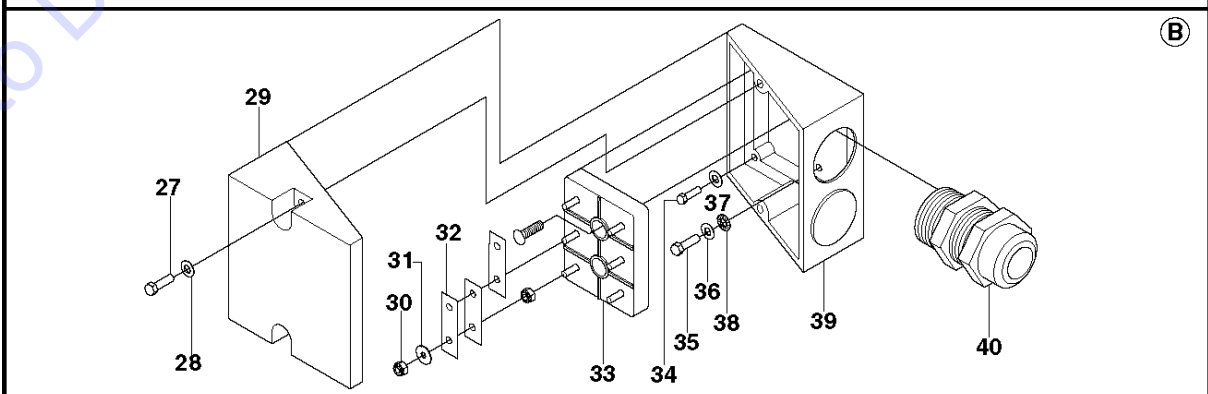
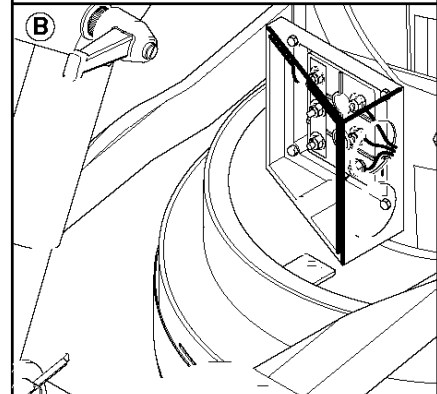
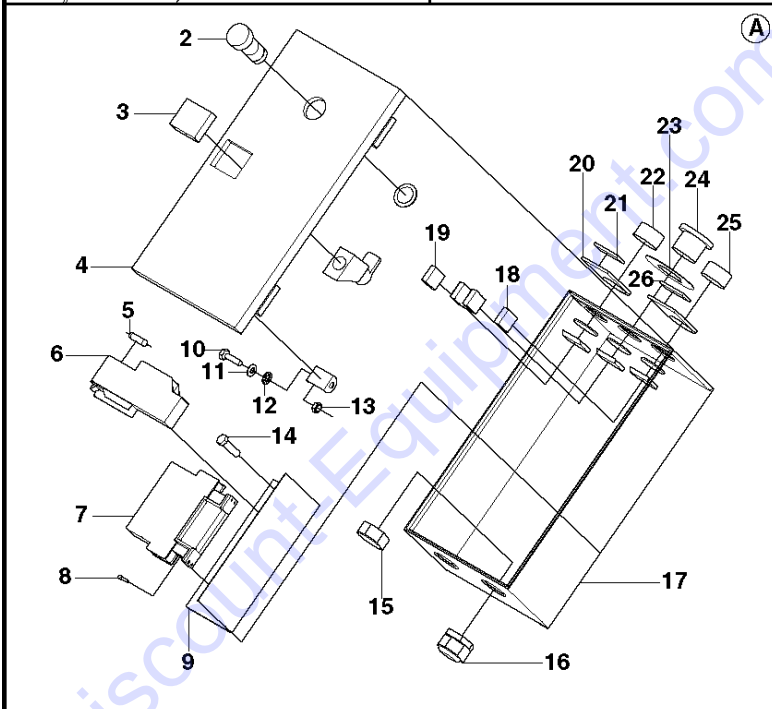
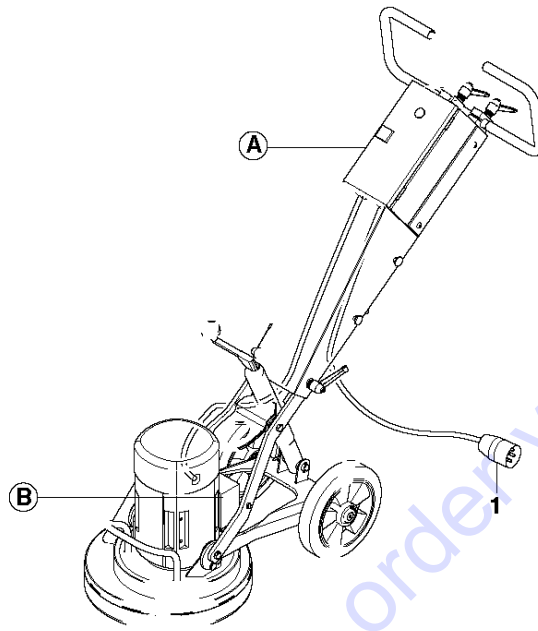
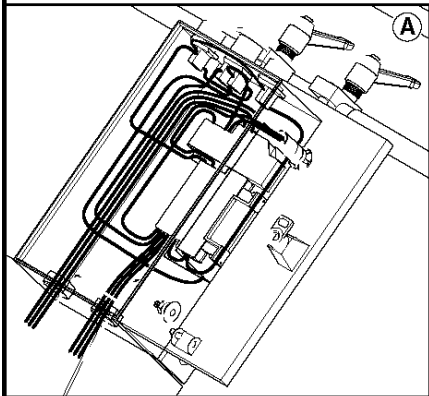


Go to Discount-Equipment.com to order your parts

Ref	Part No	Description	Remark	QTY KIT
1	510 22 81-01	DUST COVER		1

Go to [Discount-Equipment.com](http://Discount-Equipment.com) to order your parts

# E1 3-Phase

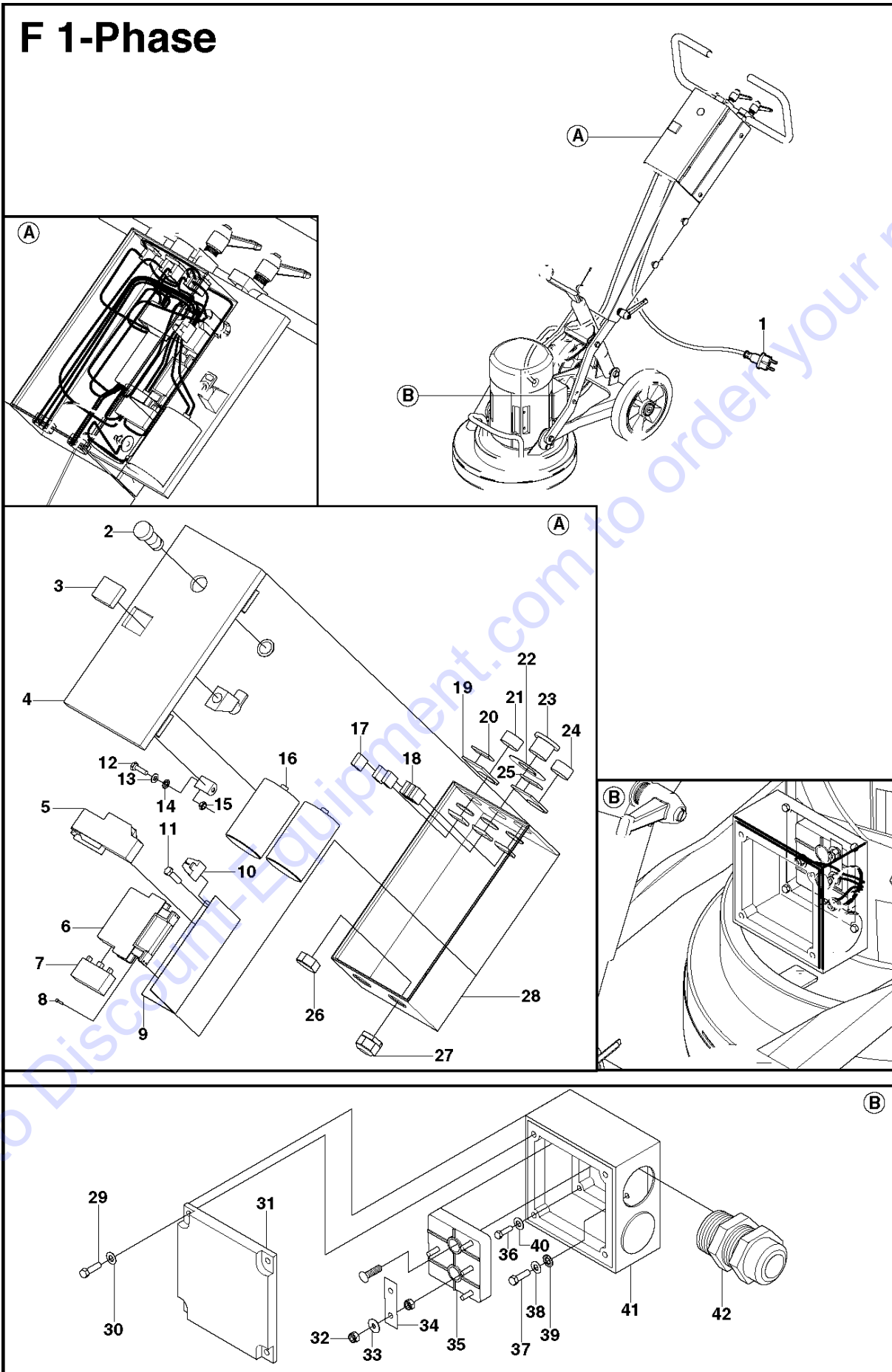


Ref	Part No	Description	Remark	QTY KIT
1	510 43 38-01	PLUG		1
2	510 43 48-01	LED		1
3	516 06 21-01	LOCK		1
4	516 06 22-01	LID		1
5	516 06 23-01	RESISTOR		1
6	579 27 63-01	PROTECTION		1 5
7	579 27 60-01	CONTACTOR		1
8	723 12 89-51	SCREW SLCHM		4
9	516 06 24-01	SHEET		1
10	725 23 68-71	SCREW EHHM		1
11	734 11 52-01	WASHER		2
12	735 21 53-01	LOCK WASHER		2
13	731 23 16-01	HEXAGON NUT		2
14	724 13 64-51	SCREW CRPANM		2
15	510 43 18-01	NUT		2
16	510 43 17-01	STRAIN RELIEVER		2
17	510 43 07-01	ELECTRIC BOX		1
18	510 43 15-01	CONTACT PLATE		1
19	510 43 14-01	CONTACT PLATE		3
20	510 43 30-01	HOLDER		2
21	510 43 31-01	SIGN		1
22	510 43 11-01	PUSH BUTTON		1
23	510 43 16-01	WARNING SIGN		1
24	510 43 13-01	PUSH BUTTON		1
25	510 43 12-01	PUSH BUTTON		1
26	510 43 32-01	SIGN		1
27	725 23 37-71	SCREW EHHM		2
28	516 06 29-01	LOCK WASHER		2
29	516 06 30-01	LID		1
30	731 23 14-01	HEXAGON NUT		12
31	734 11 46-01	WASHER		6
32	516 06 31-01	CONNECTION PLATE		3
33	516 06 33-01	TERMINAL BLOCK		1
34	725 23 29-71	SCREW EHHM		4
35	725 23 66-71	SCREW EHHM		1
36	734 11 52-01	WASHER		1
37	516 06 29-01	LOCK WASHER		4
38	735 21 53-01	LOCK WASHER		1
39	521 88 48-01	ELECTRIC BOX		1
40	521 88 50-01	CABLE GROMMET		1

Go to Discount-Equipment.com to order your parts



# F 1-Phase

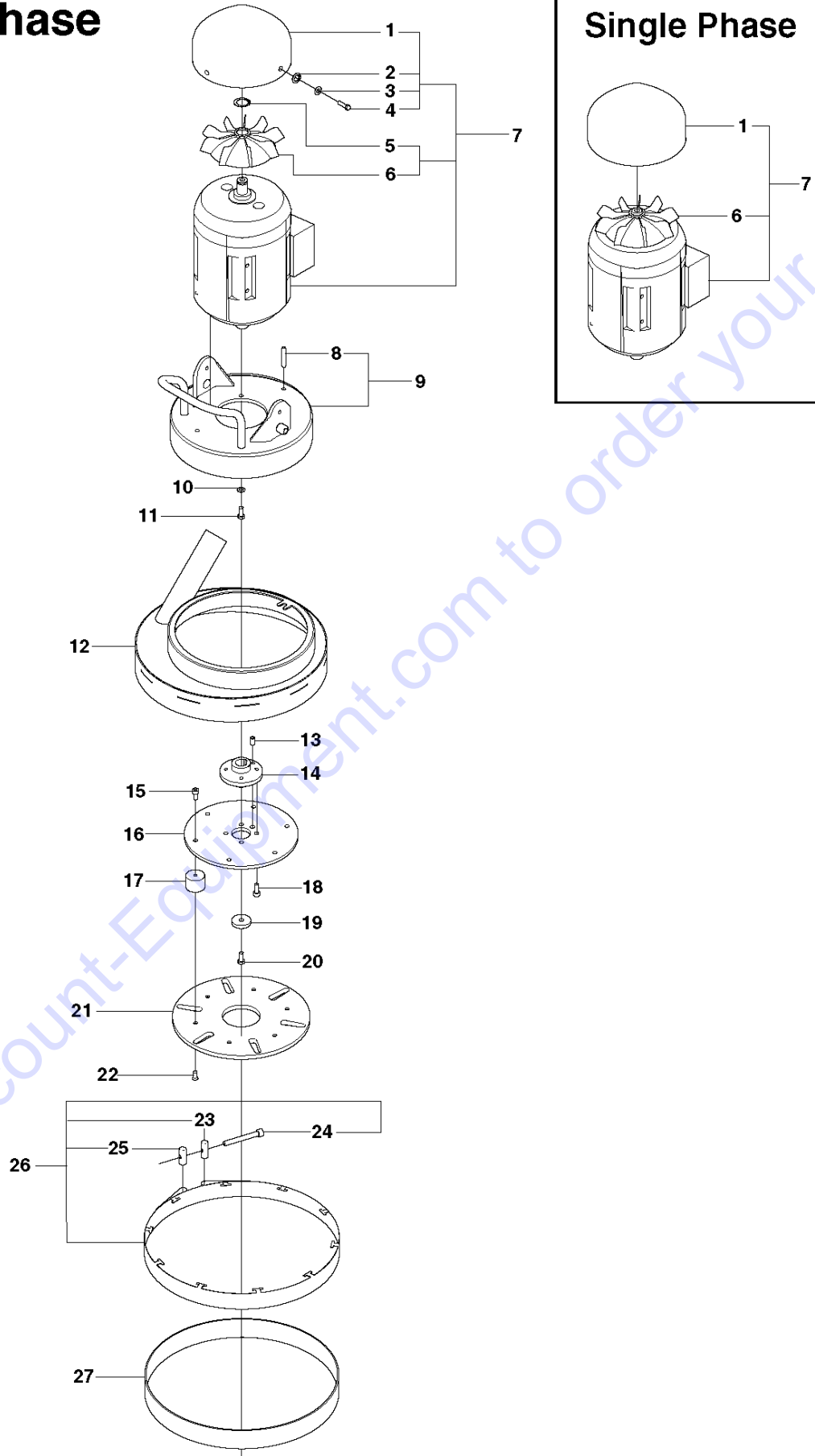


Ref	Part No	Description	Remark	QTY KIT
1	510 43 37-01	PLUG		1
2	510 43 48-01	LED		1
3	516 06 21-01	LOCK		1
4	516 06 22-01	LID		1
5	510 43 41-01	OVERLOAD PROTECTION		1
6	510 43 09-01	CONTACTOR		1
7	510 43 49-01	TIMER		1
8	723 12 89-51	SCREW SLCHM		4
9	516 06 24-01	SHEET		1
10	510 43 34-01	TERMINAL BLOCK		1
11	724 13 64-51	SCREW CRPANM		2
12	725 23 68-71	SCREW EHHM		1
13	734 11 52-01	WASHER		2
14	735 21 53-01	LOCK WASHER		2
15	731 23 16-01	HEXAGON NUT		2
16	510 43 33-01	CAPACITOR		2
17	510 43 14-01	CONTACT PLATE		3
18	510 43 15-01	CONTACT PLATE		3
19	510 43 30-01	HOLDER		2
20	510 43 31-01	SIGN		1
21	510 43 11-01	PUSH BUTTON		1
22	510 43 16-01	WARNING SIGN		1
23	510 43 13-01	PUSH BUTTON		1
24	510 43 12-01	PUSH BUTTON		1
25	510 43 32-01	SIGN		1
26	510 43 18-01	NUT		2
27	510 43 17-01	STRAIN RELIEVER		2
28	510 43 07-01	ELECTRIC BOX		1
29	521 88 80-01	SCREW		4
30	734 11 36-01	WASHER		4
31	521 88 81-01	LID		1
32	731 23 12-01	HEXAGON NUT		8
33	734 11 36-01	WASHER		4
34	521 88 82-01	CONNECTION PLATE		1
35	521 88 83-01	TERMINAL BLOCK		1
36	724 12 91-51	SCREW CRPANM		4
37	521 88 84-01	LOCK WASHER		4
38	724 12 87-51	SCREW		1
39	734 11 36-01	WASHER		1
40	735 21 36-01	LOCK WASHER		1
41	521 88 85-01	ELECTRIC BOX		1
42	521 88 86-01	CABLE GROMMET		1

Go to Discount Equipment.com to order your parts

# A 3-Phase

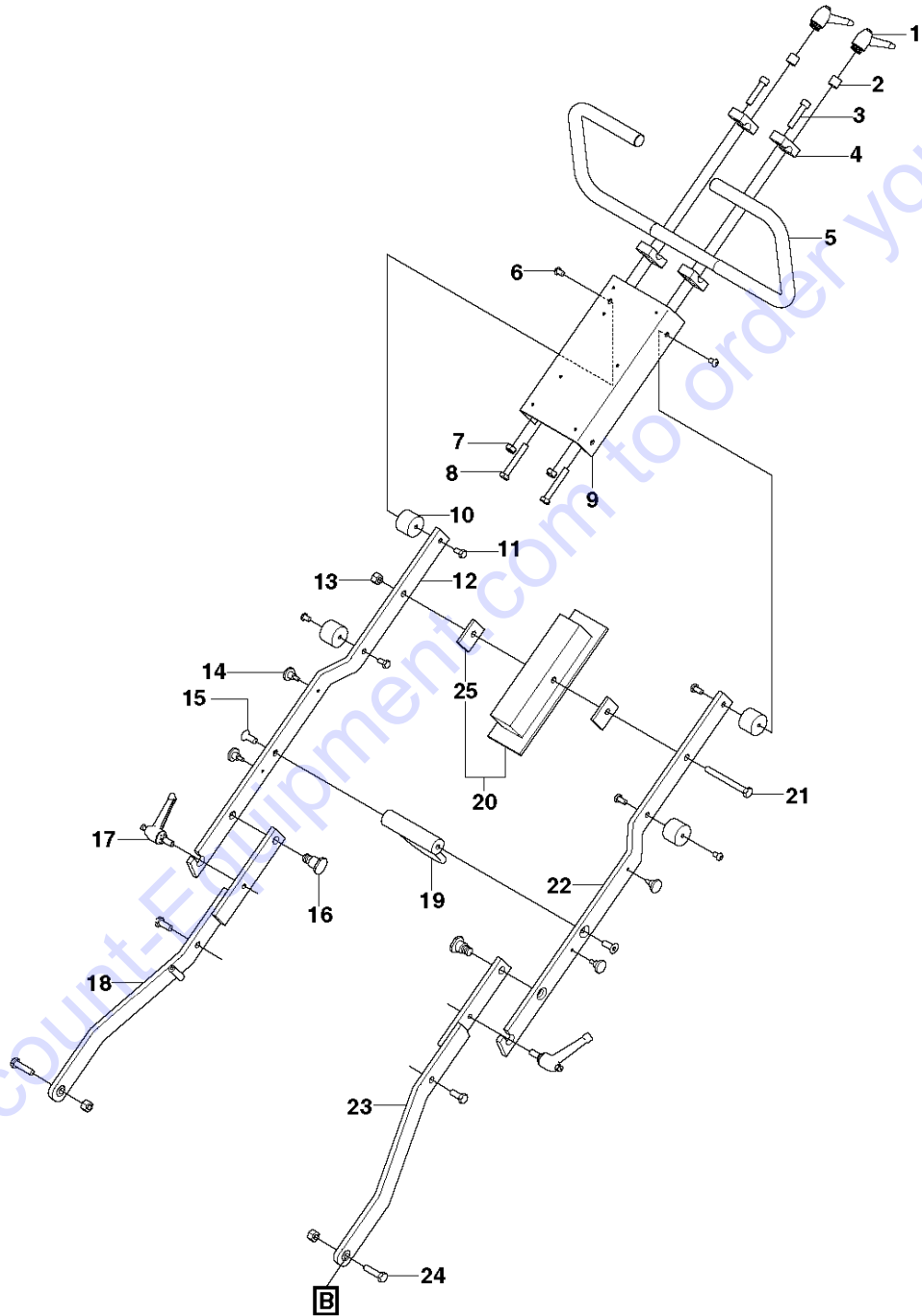
# Single Phase



Ref	Part No	Description	Remark	QTY	KIT
1	522 48 68-01	FAN COVER	Single Phase	1	7
1	522 48 67-01	FAN COVER	3-Phase	1	7
2	522 46 42-01	WASHER		4	7
3	522 46 40-01	LOCK WASHER		4	7
4	725 23 25-77	SCREW EHHM		4	7
5	735 31 28-00	CIRCLIP		1	7
6	522 48 70-01	IMPELLER	3-Phase	1	7
6	522 48 71-01	IMPELLER	Single Phase	1	
7	510 20 84-01	MOTOR	3-Phase	1	7
7	510 43 50-01	MOTOR	Single Phase	1	7
8	721 43 85-01	PIN		1	9
9	510 20 90-01	MOTOR BRACKET		1	9
10	734 11 63-71	WASHER		1	
11	725 54 55-01	SCREW IHSCM		1	
12	510 21 04-01	DUST COVER		1	
14	510 21 33-01	HUB	3-Phase	1	
13	721 44 09-01	PIN		1	
14	510 43 51-01	HUB	Single Phase	1	
15	725 54 49-55	SCREW IHSCM		6	
16	510 21 30-01	ATTACHMENT PLATE		1	
17	510 21 31-01	RUBBER DAMPER		6	
18	725 55 07-55	SCREW IHSCM		4	
19	510 21 35-01	WASHER		1	
20	725 24 95-71	SCREW EHHM		1	
21	510 22 13-01	HOLDER DISC		1	
22	725 64 49-55	SCREW IHCSFM		6	
23	510 21 28-01	PIN		1	26
24	725 55 09-55	SCREW IHSCM		1	26
25	510 21 27-01	PIN		1	26
26	510 21 18-01	RING FASTENER		1	26
27	510 21 02-01	RUBBER RING		1	26

Go to Discount-Equipment.com to order your parts

**C**



Ref	Part No	Description	Remark	QTY	KIT
1	510 24 48-01	HANDLE		2	
2	510 22 96-01	SPACER		2	
3	725 55 00-55	SCREW IHSCM		2	
4	510 22 93-01	BRACKET		4	
5	510 22 94-01	HANDLE		1	
6	510 36 15-01	SCREW IHPANM		4	
7	510 36 17-01	NUT		2	
8	725 25 04-51	SCREW EHHM		2	
9	510 22 88-01	FRAME		1	
10	510 22 78-01	RUBBER DAMPER		4	
11	725 24 49-71	SCREW EHHM		4	
12	510 22 69-01	FORK		1	
13	732 25 20-01	HEXAGON LOCKING NUT		3	
14	510 36 16-01	SCREW		4	
15	725 64 93-55	SCREW IHCSFM		2	
16	510 22 84-01	BUSHING		2	
17	510 24 44-01	HANDLE		2	
18	510 21 60-01	ARM		1	17
19	510 22 70-01	HOSE CLIP		1	
20	510 22 73-01	COUNTERWEIGHT		1	
21	725 25 11-71	SCREW EHHM		1	
22	510 22 68-01	FORK		1	
23	510 21 59-01	ARM		1	
24	725 24 99-71	SCREW EHHM		2	
25	522 48 72-01	SPACER		2	20

Go to Discount-Equipment.com to order your parts

# PARTS FINDER

**Search Website  
by Part Number**



**Search Manual  
Library For Parts  
Manual & Lookup Part  
Numbers – Purchase  
or Request Quote**

**Search Manuals**

Enter your information to help us find the right parts manual for your machine.

\* Brand:

\* Model:

\* Serial:

\* Part Number:

SEARCH

**Can't Find Part or  
Manual? Request Help  
by Manufacturer,  
Model & Description**

**Parts Order Form**

Please fill in the following information to help us find the right part for your machine.

Manufacturer:	<input type="text"/>
Model:	<input type="text"/>
Description:	<input type="text"/>
Part Number:	<input type="text"/>
Quantity:	<input type="text"/>
Notes:	<input type="text"/>

Submit

Discount-Equipment.com is your online resource for quality parts & equipment.

Florida: **561-964-4949** Outside Florida TOLL FREE: **877-690-3101**

**Need parts?**

Click on this link: <http://www.discount-equipment.com/category/5443-parts/> and choose one of the options to help get the right parts and equipment you are looking for. Please have the machine model and serial number available in order to help us get you the correct parts. If you don't find the part on the website or on one of the online manuals, please fill out the request form and one of our experienced staff members will get back to you with a quote for the right part that your machine needs.

We sell worldwide for the brands: Genie, Terex, JLG, MultiQuip, Mikasa, Essick, Whiteman, Mayco, Toro Stone, Diamond Products, Generac Magnum, Airman, Haulotte, Barreto, Power Blanket, Nifty Lift, Atlas Copco, Chicago Pneumatic, Allmand, Miller Curber, Skyjack, Lull, Skytrak, Tsurumi, Husquvarna Target, Stow, Wacker, Sakai, Mi-T-M, Sullair, Basic, Dynapac, MBW, Weber, Bartell, Bennar Newman, Haulotte, Ditch Runner, Menegotti, Morrison, Contec, Buddy, Crown, Edco, Wyco, Bomag, Laymor, EZ Trench, Bil-Jax, F.S. Curtis, Gehl Pavers, Heli, Honda, ICS/PowerGrit, IHI, Partner, Imer, Clipper, MMD, Koshin, Rice, CH&E, General Equipment, Amida, Coleman, NAC, Gradall, Square Shooter, Kent, Stanley, Tamco, Toku, Hatz, Kohler, Robin, Wisconsin, Northrock, Oztec, Toker TK, Rol-Air, APT, Wylie, Ingersoll Rand / Doosan, Innovatech, Con X, Ammann, Mecalac, Makinex, Smith Surface Prep, Small Line, Wanco, Yanmar