

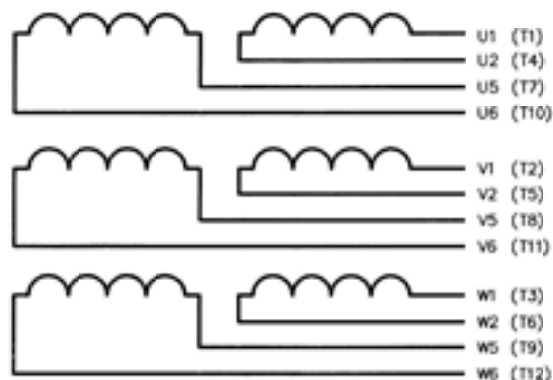
DA7-A100

ISSUE
J

IF IN DOUBT-ASK

FIRST W.O.

MAIN STATOR (12 ENDS)



(T1) = NEMA EQUIVALENT

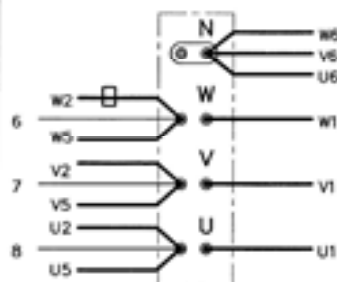
CONNECT TO
AVR



DEPENDING ON AVR TYPE MULTIPLE LEADS (6,7,8) WILL BE REQUIRED.
LEAD 6 MAY NOT BE REQUIRED
FULL DETAILS ARE SHOWN ON THE BASE DIAGRAM.

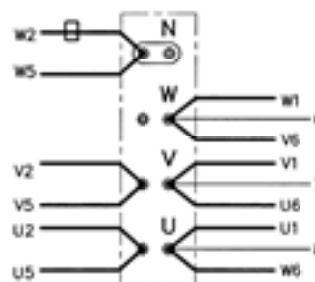
MAIN TERMINAL CONNECTIONS

SERIES STAR 3PH 4W
OUTPUT TERMINALS U.V.W.N.



DROOP C/T POSITION (when fitted)
CONNECTIONS ARE SHOWN ON BASE DIAGRAM

SERIES DELTA 3PH 4W
OUTPUT TERMINALS U.V.W.N.

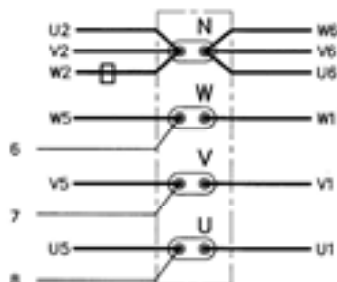


DROOP C/T POSITION (when fitted)
CONNECTIONS ARE SHOWN ON BASE DIAGRAM

ALL CONNECTIONS

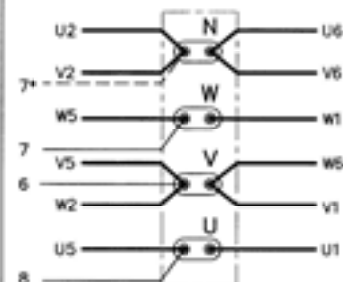
FOR ALTERNATIVE C/T
POSITIONS REFER
TO THE FACTORY

PARALLEL STAR 3PH 4W
OUTPUT TERMINALS U.V.W.N.



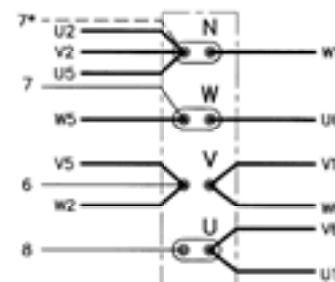
DROOP C/T POSITION (when fitted)
CONNECTIONS ARE SHOWN ON BASE DIAGRAM

PARALLEL ZIG ZAG 1PH 3W
OUTPUT TERMINALS HIGH VOLTS U.V.
LOW VOLTS U.N. AND W.N.



*⁷ ALTERNATIVE FOR AVR IN LOW VOLT MODE
DETAILS ARE SHOWN ON BASE DIAGRAM
DROOP NOT AVAILABLE

DOUBLE DELTA 1PH 3 WIRE
OUTPUT TERMINALS HIGH VOLTS U.V.
LOW VOLTS U.N. AND W.N.



*⁷ ALTERNATIVE FOR AVR IN LOW VOLT MODE
DETAILS ARE SHOWN ON BASE DIAGRAM
DROOP NOT AVAILABLE

4/3472/1	J	SMH	29:08:01	ALTERNATIVE C/T POSITION ADDED
3/9964	H	SMH	11:04:95	DOUBLE DELTA CONNECTION - CENTRE POINT CHANGED FROM W TO N
3/9728	G	SMH	13:12:94	DOUBLE DELTA CONNECTION BROUGHT IN LINE WITH STATOR LEAD EXIT POSITIONS
3/9572	F	SMH	17:10:94	OUTPUT TERMINALS - PARALLEL ZIG ZAG AND DOUBLE DELTA CHANGED
3/9324/1	E	SMH	04:07:94	DOUBLE DELTA - NOW IN LINE WITH LINK BOARD VERSION
3/8946/2	D	MLW	25:01:94	PARALLEL ZIG ZAG ADDED
3/8192	A	P.N.	05:01:93	A 3/8192, B 3/8428, C 3/8946/1
MOD.	ISS.	DRN.	DATE	ALTERATION

CERTIFIED PRINT (ONLY IF SIGNED)		FRAME		---	OTHER FEATURES	
		CONTROL		SERIES	---	
BY		POLES				
DATE		No. OF ENDS		12		
DRAWN	P.N. 5:1:93	SENSING		2/3 PHASE		
CH'D		NEWAGE INTERNATIONAL Ltd		DA7-A100		
APP'D		STAMFORD, ENGLAND		SHEET 1 OF 1 SHEETS		

CONNECTION DIAGRAM

ISSUE
J

