



# SPARE PARTS LIST

EARLY ENTRY SAWS

SOFF CUT 5000, 2016-11

Go to [Discount-Equipment.com](http://Discount-Equipment.com) to order your parts



# PARTS FINDER

**Search Website  
by Part Number**



**Search Manual  
Library For Parts  
Manual & Lookup Part  
Numbers – Purchase  
or Request Quote**

**Search Manuals**

Enter your information to help us find the right parts manual for your machine.

\* Brand:

\* Model:

\* Serial:

\* Part Number:

SEARCH

**Can't Find Part or  
Manual? Request Help  
by Manufacturer,  
Model & Description**

**Parts Order Form**

Please fill in the following information to help us find the right part for your machine.

MANUFACTURER:

MODEL:

DESCRIPTION:

DATE:

TIME:

PHONE:

EMAIL:

ADDRESS:

CITY:

STATE:

ZIP:

NAME:

COMPANY:

PHONE:

EMAIL:

REQUEST FOR QUOTE

Discount-Equipment.com is your online resource for quality parts & equipment.

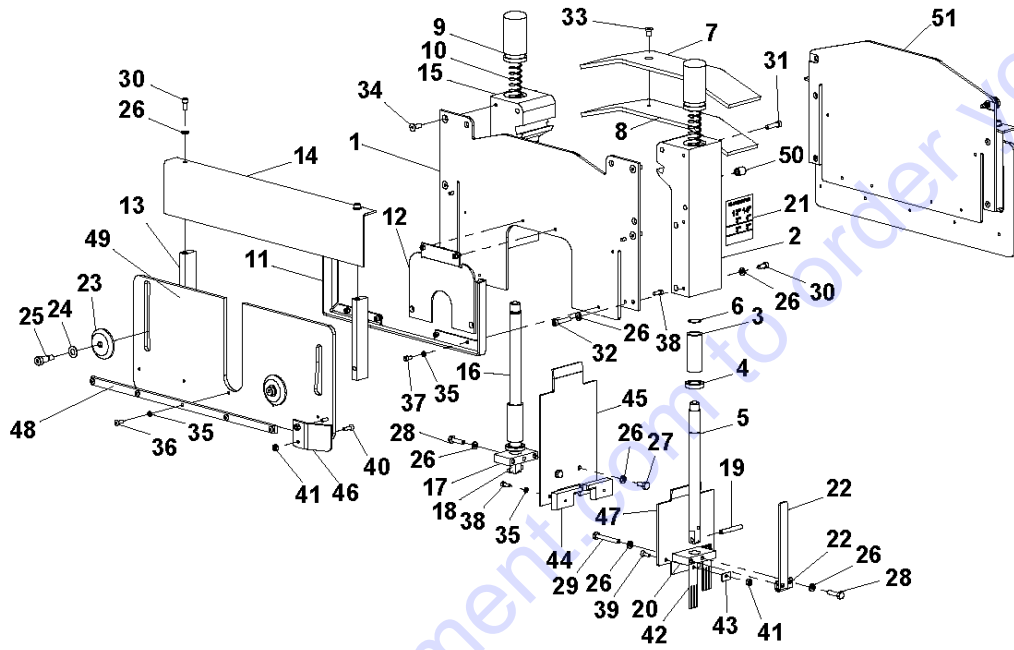
Florida: **561-964-4949** Outside Florida TOLL FREE: **877-690-3101**

**Need parts?**

Click on this link: <http://www.discount-equipment.com/category/5443-parts/> and choose one of the options to help get the right parts and equipment you are looking for. Please have the machine model and serial number available in order to help us get you the correct parts. If you don't find the part on the website or on one of the online manuals, please fill out the request form and one of our experienced staff members will get back to you with a quote for the right part that your machine needs.

We sell worldwide for the brands: Genie, Terex, JLG, MultiQuip, Mikasa, Essick, Whiteman, Mayco, Toro Stone, Diamond Products, Generac Magnum, Airman, Haulotte, Barreto, Power Blanket, Nifty Lift, Atlas Copco, Chicago Pneumatic, Allmand, Miller Curber, Skyjack, Lull, Skytrak, Tsurumi, Husquvarna Target, Stow, Wacker, Sakai, Mi-T-M, Sullair, Basic, Dynapac, MBW, Weber, Bartell, Bennar Newman, Haulotte, Ditch Runner, Menegotti, Morrison, Contec, Buddy, Crown, Edco, Wyco, Bomag, Laymor, EZ Trench, Bil-Jax, F.S. Curtis, Gehl Pavers, Heli, Honda, ICS/PowerGrit, IHI, Partner, Imer, Clipper, MMD, Koshin, Rice, CH&E, General Equipment, Amida, Coleman, NAC, Gradall, Square Shooter, Kent, Stanley, Tamco, Toku, Hatz, Kohler, Robin, Wisconsin, Northrock, Oztec, Toker TK, Rol-Air, APT, Wylie, Ingersoll Rand / Doosan, Innovatech, Con X, Ammann, Mecalac, Makinex, Smith Surface Prep, Small Line, Wanco, Yanmar

**M** SOFF CUT X5000  
BLADE BLOCK ASSEMBLY



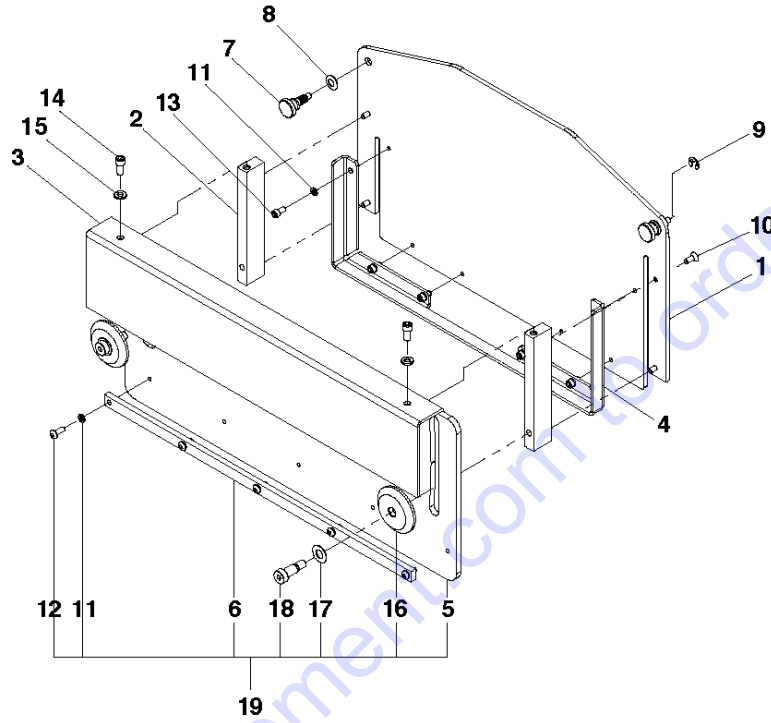
## BLADE BLOCK

SOFF CUT 5000, 2016-11

Ref	Part No	Description	Remark	QTY KIT
1	505 66 25-01	COVER	From page K	1
2	505 66 23-01	REAR BLOCK. B.B.		1
3	505 66 78-01	SHAFT		2
4	505 73 80-01	SEAL		2
5	505 66 34-01	SHAFT		1
6	505 74 84-01	SPIRAL RETAINING RING		2
7	505 66 18-01	COVER		1
8	505 66 17-01	COVER		1
9	505 66 35-01	CAP. B.B. SHAFT		2
10	505 66 37-01	SPRING		2
11	505 66 22-01	BRACKET		1
12	505 66 29-01	COVER		1
13	505 66 15-01	BLOCK. LEXAN MOUNT		2
14	505 66 19-01	COVER		1
15	505 66 24-01	FRONT BLOCK. B.B.		1
16	505 66 33-01	SHAFT		1
17	505 83 98-01	BLOCK		1
18	505 77 40-01	PLATE		1
19	587 91 82-01	PIN		1
20	505 66 49-01	BLOCK. SHAFT COLAR. B.B.		1
21	510 32 57-01	LABEL		1
22	505 83 17-01	DEPTH GAUGE ARM		1
23	505 76 17-01	WASHER		2
24	505 63 42-01	FLAT WSHR.750 X .375 X .031 SS		2
25	505 62 71-01	SHSH BOLT 3/8 X 5/8 BLK STL		2
26	505 63 28-01	LK WASH 1/4 SPLIT SS		12
27	505 62 74-01	HEX BOLT 1/4-20-5/8 S.S.		3
28	505 72 73-01	HEX BOLT 1/4-20-1 STAINLESS ST		2
29	505 72 81-01	HEX BOLT 1/4-20-2 S.S. ALL THR		1
30	505 72 23-01	SHC 1/4-20-1/2 S.S.		4
31	505 62 79-01	SHC 1/4-20-1 S.S.		2
32	505 62 80-01	SHC 1/4-20-1 1/4 S.S.		2
33	505 62 85-01	FHS 1/4-20-1/2 S.S.		2
34	505 62 86-01	FHS 1/4-20-3/4 S.S.		4
35	505 63 31-01	LK WASH #10 SPLIT SS		15
36	505 62 98-01	BHS 10-32-1/2 S.S.		5
37	505 62 77-01	SHC 10-32-3/8 S.S. NF		8
38	505 72 96-01	SHC 10-32 X 1/2 S.S. CBL MTS		6
39	505 73 02-01	FHS 10-24-5/8 S.S.		2
40	505 77 29-01	FHC 10-24 X 3/4 SS		2
41	505 63 04-01	NYLOC NUT #10-24 CAD.PL.		4
42	505 76 92-01	SMALL DUST FLAP		2
43	505 76 91-01	MTG. BAR FOR RUBBER FLAPS SML		2
44	505 66 16-01	BLOCK. FRONT DIVERTER		1
45	505 66 27-01	DIVERTER. B.B FRONT		1
46	505 76 15-01	SHIELD		1
47	505 66 28-01	DIVERTER. B.B REAR		1
48	505 66 43-01	STIFFENER		1
49	505 66 31-01	LEXAN. INNER		1
50	505 74 83-01	INSERT		2
51	505 86 25-01	BLADE		1

Go to [DiscountParts.com](http://DiscountParts.com) to order your parts

**N** SOFF CUT X5000  
BLADE BLOCK COVER ASSEMBLY



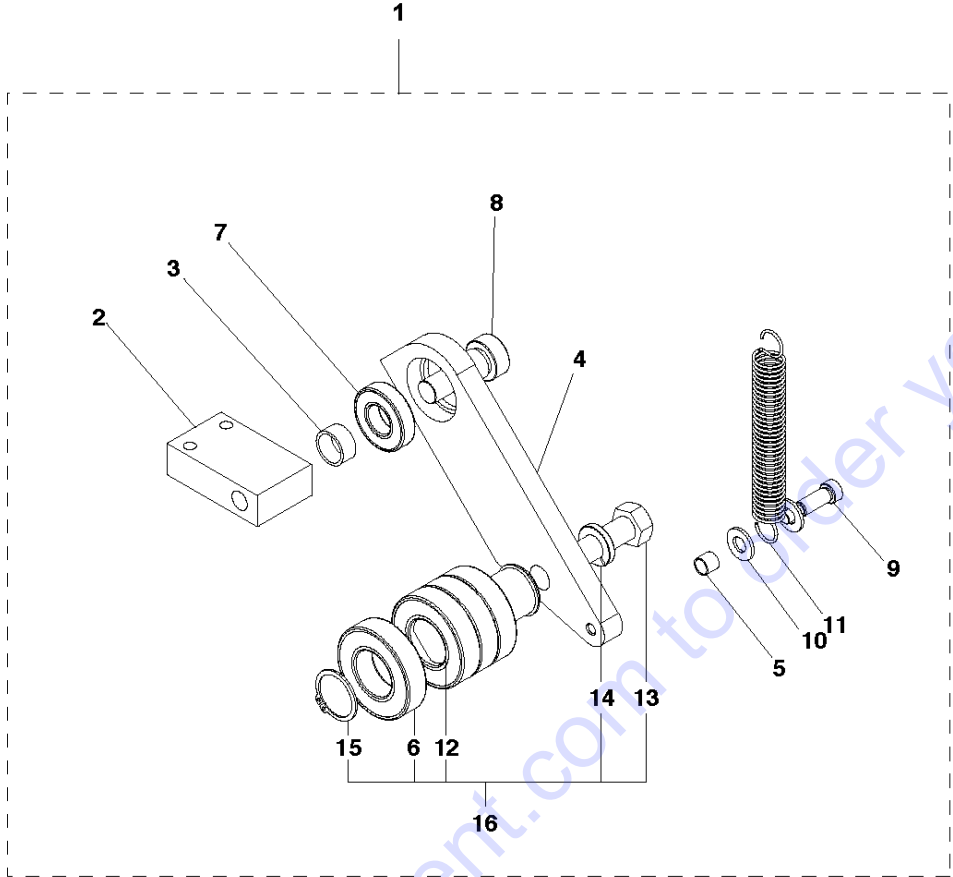
## BLADE BLOCK COVER

SOFF CUT 5000, 2016-11

Ref	Part No	Description	Remark	QTY KIT	
1	505 66 30-01	FRONT COVER		1	
2	505 66 15-01	BLOCK. LEXAN MOUNT		2	
3	505 66 21-01	COVER		1	
4	505 66 22-01	BRACKET		1	
5	505 66 32-01	LEXAN. OUTER		1	19
6	505 66 43-01	STIFFENER		1	19
7	505 53 63-01	KNOB		2	
8	505 53 64-01	WASHER		2	
9	505 53 65-01	E-CLIP		2	
10	505 72 99-01	FHS 10-32-1/2 S.S.		4	
11	505 63 31-01	LK WASH #10 SPLIT SS		11	19
12	505 62 98-01	BHS 10-32-1/2 S.S.		5	19
13	505 62 77-01	SHC 10-32-3/8 S.S. NF		6	
14	505 72 23-01	SHC 1/4-20-1/2 S.S		2	
15	505 63 28-01	LK WASH 1/4 SPLIT SS		2	
16	505 76 17-01	WASHER		2	19
17	505 63 42-01	FLAT WSHR.750 X .375 X .031 SS		2	19
18	505 62 71-01	SHSH BOLT 3/8 X 5/8 BLK STL		2	19
19	505 88 98-01	X5000 OUTER LEXAN		1	

Go to Discount-Equipment.com to order your parts

**E** SOFF CUT X5000  
BLADE IDLER PULLEY



Go to Discount-Equipment.com to order your parts

## BLADE IDLER PULLEY

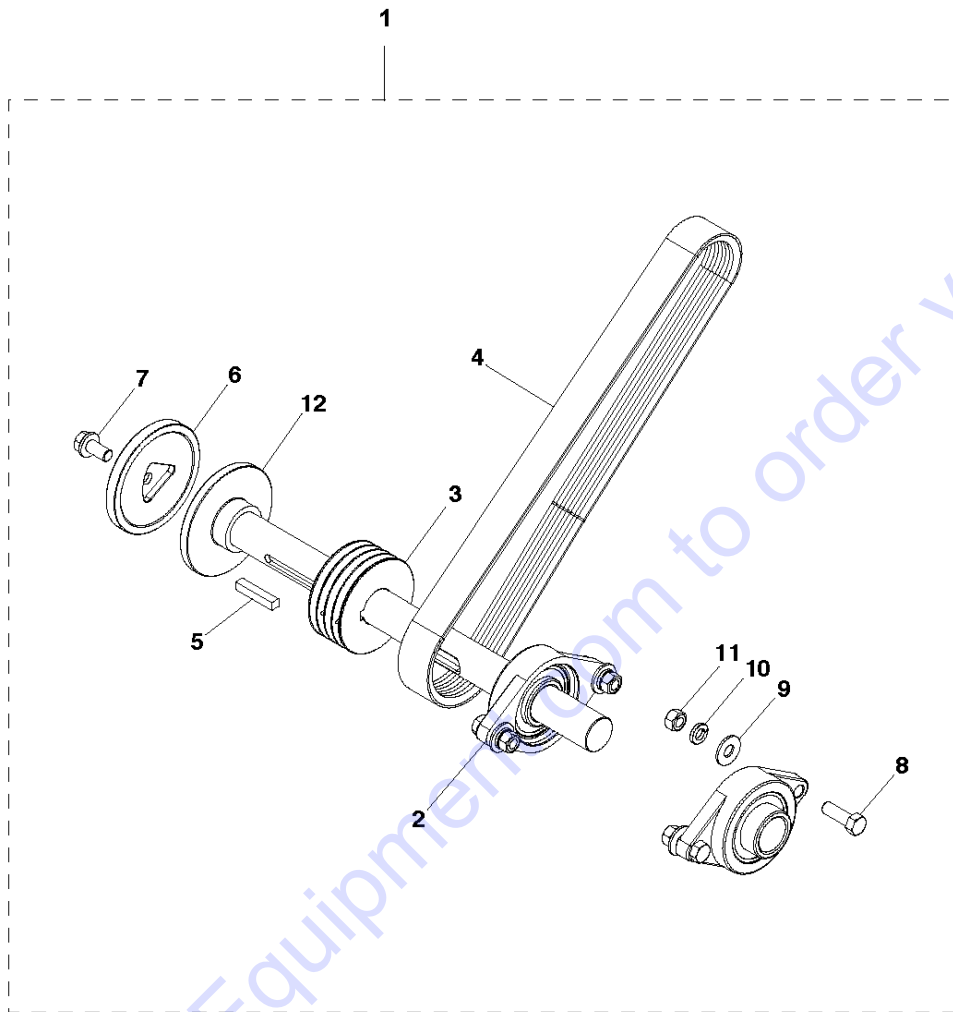
SOFF CUT 5000, 2016-11

Ref	Part No	Description	Remark	QTY	KIT
1	579876601	TBD		1	
2	505 66 45-01	BLOCK. IDLER MOUNT		1	1
3	505 71 46-02	SPACER		1	1
4	505 66 39-01	IDLER PULLEY ARM		1	1
5	505 71 79-01	BUSHING.G.A.(.315 SPACER)		1	1
6	505 73 63-01	WHEEL		4	1, 16
7	505 73 60-01	PULLEY		1	1
8	505 72 62-01	SHSB 5/8 X 3/4 BLK STL		1	1
9	505 72 64-01	SHSB 5/16 X 3/4 BLK STL		1	1
10	539 99 01-88	WASHER		2	1
11	505 79 69-01	SPRING		1	1
12	505 66 50-01	SHAFT.BLADE BELT TENSIONER		1	1, 16
13	505 82 11-01	HEX BOLT 1/2 - 13 X 1 1/2 GR 8		1	1, 16
14	505 73 11-01	LK WASH 1/2 SPLIT SS		1	1, 16
15	542 20 62-05	SNAP RING		2	1, 16
16	505 48 45-02	PULLEY		1	1

Go to Discount-Equipment.com to order your parts



**G** SOFF CUT X5000  
BLADE SHAFT ASSEMBLY



Go to Discount-Equipment.com to order your parts

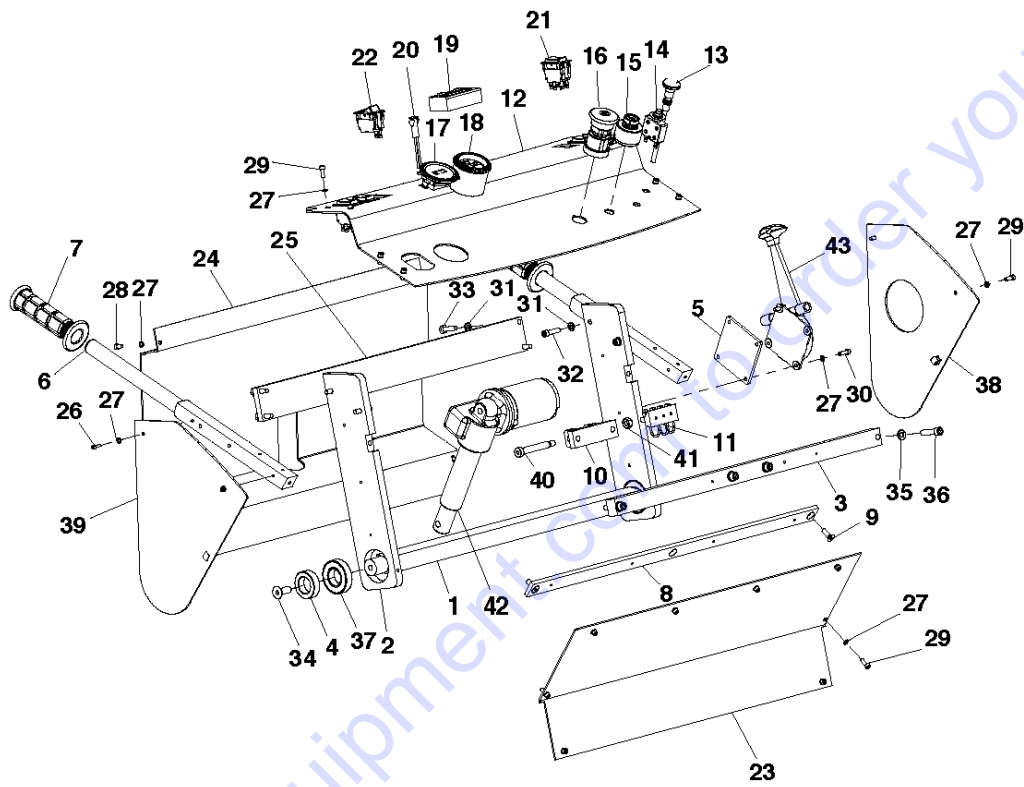
## BLADE SHAFT

SOFF CUT 5000, 2016-11

Ref	Part No	Description	Remark	QTY KIT	
1	510 27 22-01	ASSEMBLY		1	
2	505 77 41-01	BLADE SHAFT		2	1
3	585 00 48-01	SHEAVE	Machines with S/N before 001317909001 needs to buy both pos 3 and 4	1	1
4	542 16 66-29	V-BELT	Machines with S/N before 001317909001 needs to buy both pos 3 and 4	1	1
5	510 32 69-01	KEY		1	1
6	505 49 15-06	WASHER		1	1
7	505 48 37-01	BOLT		1	1
8	505 82 11-01	HEX BOLT 1/2 - 13 X 1 1/2 GR 8		4	1
9	505 73 14-01	FLAT WASH 1/2 X 1 1/4 O.D. S.S		4	1
10	505 73 11-01	LK WASH 1/2 SPLIT SS		4	1
11	505 73 33-01	1/2-13 HEX NUT GOLD GR.8		4	1
12	505 57 32-05	SHAFT		1	1

Go to [Discount-Equipment.com](http://Discount-Equipment.com) to order your parts

**L** SOFF CUT X5000  
CONTROL PANEL ASSEMBLY



Go to Discount-Equipment.com to order your parts

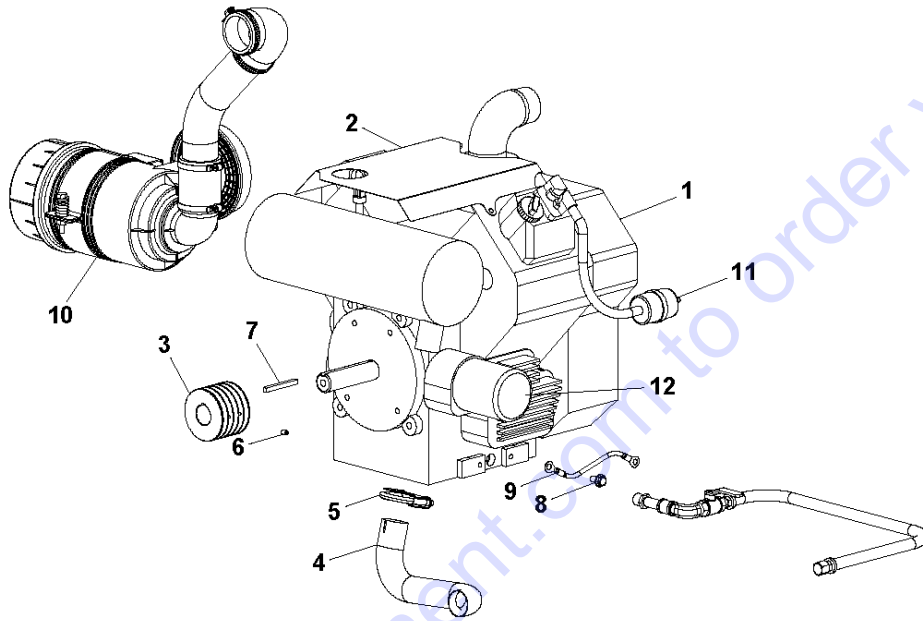
## CONTROL PANEL

SOFF CUT 5000, 2016-11

Ref	Part No	Description	Remark	QTY KIT
1	505 65 79-01	SHAFT. CONTROL PANEL PIVOT		1
2	505 65 72-01	ARM. CP PIVOT		2
3	505 65 71-01	ACTUATOR		1
4	505 65 80-01	SPACER		2
5	505 65 81-01	SPACER		1
6	505 65 78-01	SHAFT. CONTROL PANEL HANDLE		2
7	505 60 11-01	HANDLE GRIP		2
8	505 75 85-01	CROSS BAR (KEY DASH)		1
9	505 62 86-01	FHS 1/4-20-3/4 S.S.		2
10	505 75 70-01	ACTUATOR		1
11	505 75 27-01	TERMINAL BLOCK FOR G2000		1
12	505 65 73-01	PANEL. CONTROL GAGE		1
13	505 69 50-01	CHOKE		1
14	505 60 51-01	25 AMP. CIRCUIT BREAKER		1
15	505 79 76-01	KEY SWITCH		1
16	505 70 44-01	STOP SWITCH		1
17	505 75 02-02	TACHOMETER		1
18	505 70 43-01	METER		1
19	505 60 50-01	HOUR METER		1
20	505 84 60-01	G2/G1/GX3000 LED LIGHT		1
21	582 51 85-01	SWITCH		4
22	582518601	TBD		1
23	505 65 76-01	PANEL. CONTROL FRONT		1
24	505 65 77-01	PANEL. CONTROL REAR		1
25	505 66 47-01	CROSS BAR. CP. REAR		1
26	505 80 20-01	SHC 6-32 X 1/2 STAINLESS STEEL		2
27	505 63 31-01	LK WASH #10 SPLIT SS		26
28	505 62 77-01	SHC 10-32-3/8 S.S. NF		4
29	505 72 96-01	SHC 10-32 X 1/2 S.S. CBL MTS		18
30	505 72 97-01	SHC 10-32 X 5/8 S.S.		2
31	505 63 28-01	LK WASH 1/4 SPLIT SS		8
32	505 62 79-01	SHC 1/4-20-1 S.S.		4
33	505 72 73-01	HEX BOLT 1/4-20-1 STAINLESS ST		4
34	510 32 51-01	3/8-16 X 1 FHS S.S.		2
35	505 63 30-01	LK WASH 5/16 SPLIT SS		4
36	505 68 86-01	SHC 5/16-18 X 1 1/4 BLACK STEEL		4
37	505 73 63-01	WHEEL		2
38	505 65 75-01	PANEL. CONTROL LEFT SIDE		1
39	505 65 74-01	PANEL. CONTROL RIGHT SIDE		1
40	505 62 72-01	SHSH BOLT 3/8 X 2 1/4" (WHEELS		1
41	539 99 07-17	NUT		1
42	505 84 49-02	KIT		1
43	505 82 36-01	CONTROL LEVER		1

Go to Discounted Equipment.com to order your parts

**A** SOFF CUT X5000  
ENGINE ASSEMBLY



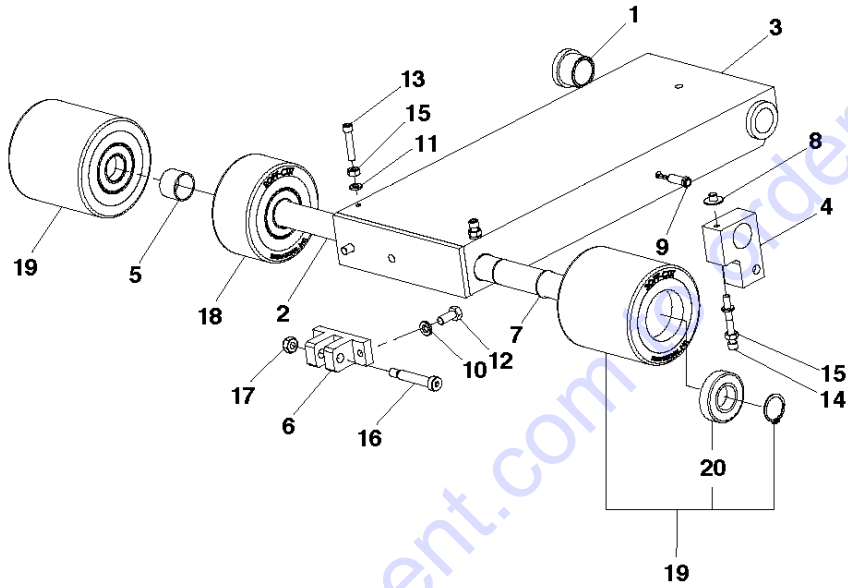
## ENGINE

SOFF CUT 5000, 2016-11

Ref	Part No	Description	Remark	QTY KIT
1	505 66 65-02	ENGINE		1
2	510 32 37-01	HEAT SHROUD		1
3	510 32 60-01	PULLEY		1
4	510 32 59-01	EXHAUST		1
5	510 32 71-01	CLAMP		1
6	542 02 05-41	SHSS,.25-20 X.375 CUP HK/CONCR		4
7	542 19 90-45	KEY		1
8	505 79 56-01	M8 X 16MM FLANGE BOLT		1
9	575 44 66-05	KIT		1
10	P/Needed	TBD		
11	505 79 82-01	FUEL FILTER		1
12	505 79 74-01	OIL FILTER		1

Go to [Discount-Equipment.com](http://Discount-Equipment.com) to order your parts

**H** SOFF CUT X5000  
FRONT WHEEL CARRIAGE



## FRONT WHEEL CARRIAGE

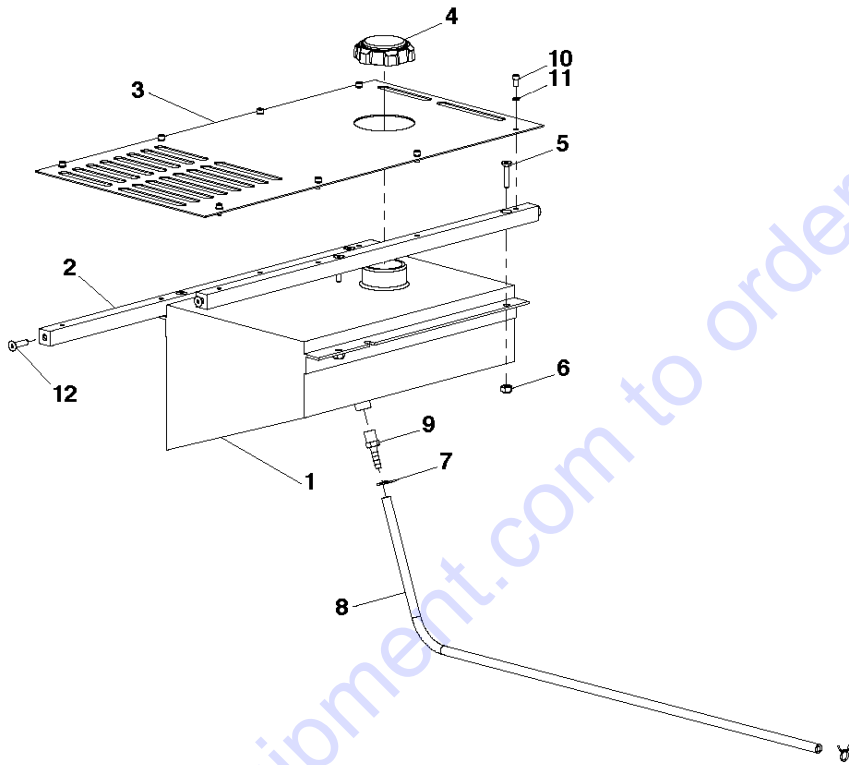
SOFF CUT 5000, 2016-11

Ref	Part No	Description	Remark	QTY KIT
1	505 70 51-01	BUSHING		2
2	505 76 40-01	AXLE		1
3	505 66 01-01	FRONT WHEEL CARRIAGE. X5000		1
4	505 66 03-01	BLOCK. DRIVE RELEASE		1
5	505 76 41-01	FRONT WHEEL SHAFT SPACER 1 1/8		1
6	505 75 69-01	ACTUATOR		1
7	542 20 62-05	SNAP RING		1
8	505 62 53-01	S.S. BUTTON *****		1
9	505 75 43-01	PROX SWITCH FPM/LINEAR FT - CE		1
10	505 63 30-01	LK WASH 5/16 SPLIT SS		2
11	505 63 28-01	LK WASH 1/4 SPLIT SS		3
12	539 97 69-34	BOLT		2
13	505 62 80-01	SHC 1/4-20-1 1/4 S.S.		2
14	505 72 89-01	SHC 1/4-20-2 S.S.		1
15	505 63 19-01	JAM NUT 1/4-20 STAINLESS STEEL		3
16	505 77 15-01	SHSB 3/8 X 1 3/4		1
17	539 99 07-17	NUT		1
18	505 86 92-01	WHEEL ASSY		1
19	505 86 91-01	WHEEL ASSY		2

Go to [Discount-Equipment.com](http://Discount-Equipment.com) to order your parts



**P** SOFF CUT X5000  
FUEL TANK ASSEMBLY



Go to Discount-Equipment.com to order your parts

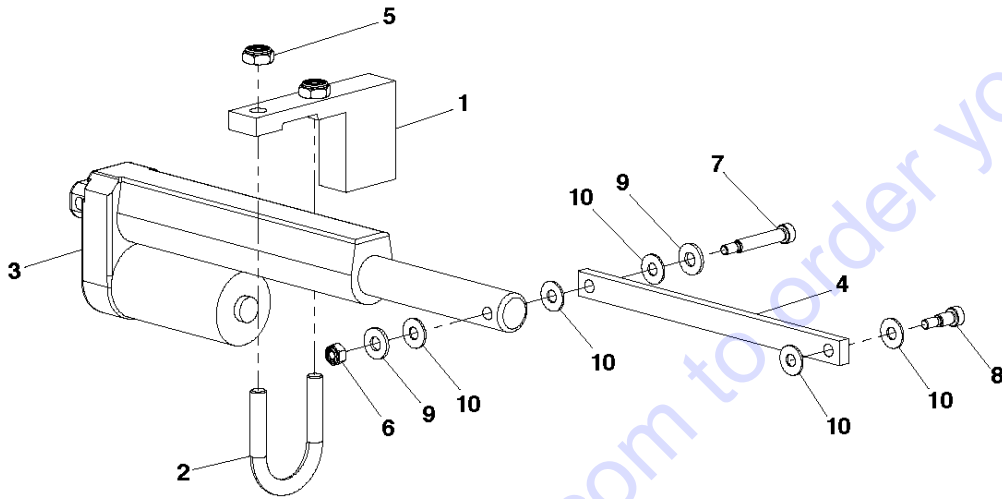
## FUEL TANK

SOFF CUT 5000, 2016-11

Ref	Part No	Description	Remark	QTY KIT
1	505 77 78-01	GAS TANK W/GAGE FOR G3000		1
2	505 79 20-01	HOOD		2
3	505 66 40-01	COVER		1
4	505 79 84-01	GAS SPRING		1
5	505 77 34-01	1/4-20 X 1 1/4 FLAT SOCKET SS		4
6	539 97 69-78	NUT		4
7	505 77 63-01	7/16 SPRING HOSE CLAMP		2
8	574 85 91-36	HOSE		1
9	541 20 47-99	FITTING		1
10	505 62 77-01	SHC 10-32-3/8 S.S. NF		8
11	505 63 31-01	LK WASH #10 SPLIT SS		8
12	505 62 87-01	FHS 1/4-20-1 S.S.		4

Go to [Discount-Equipment.com](http://Discount-Equipment.com) to order your parts

**U** SOFF CUT X5000  
KIT, GUIDE ACTUATOR

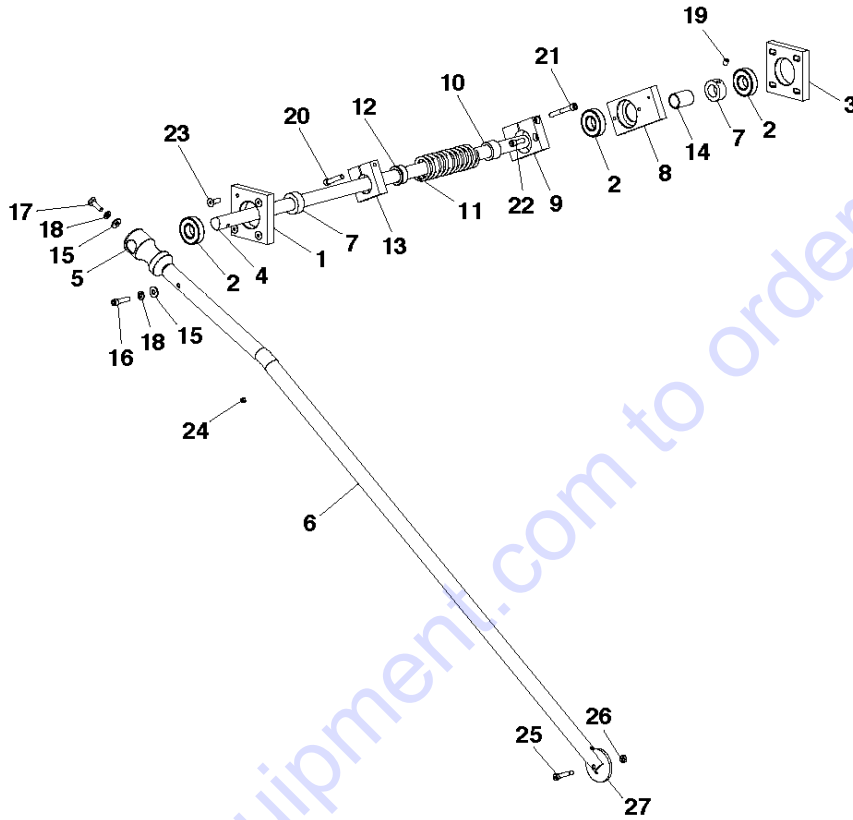


Go to Discount-Equipment.com to order your parts

Ref	Part No	Description	Remark	QTY	KIT
1	505 79 24-01	ACTUATOR		1	3
2	575 42 13-01	CLAMP		1	3
3	505 84 80-02	KIT	Complete guide	1	
4	505 76 55-01	THROTTLE EXTENSION		1	3
5	505 63 17-01	NYLOC NUT 5/16-18 .265"HT.		2	3
6	505 63 04-01	NYLOC NUT #10-24 CAD.PL.		1	3
7	505 81 17-01	SHSB 1/4 X 1 1/4		1	3
8	505 68 64-01	SHSB 1/4 X 3/8 BLK STL		1	3
9	505 63 20-01	WASHER		2	3
10	505 63 44-01	WASHER		5	3

Go to [Discount-Equipment.com](http://Discount-Equipment.com) to order your parts

**Q** SOFF CUT X5000  
GUIDE ARM ASSEMBLY



Go to Discount-Equipment.com to order your parts

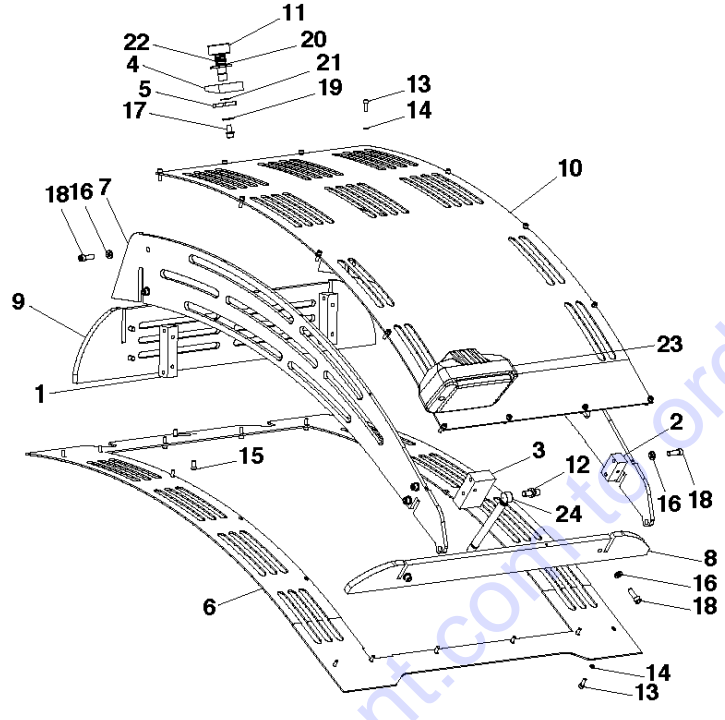
## GUIDE ARM ASSEMBLY

SOFF CUT 5000, 2016-11

Ref	Part No	Description	Remark	QTY KIT
1	505 71 37-01	PLATE MOUNTING GUIDE ARM		1
2	505 73 61-01	FRONT AXLE ASSY		3
3	505 71 38-01	PLATE MOUNT/GUIDE ARM ADJ.		1
4	505 66 41-01	SHAFT. GUIDE ARM		1
5	505 76 99-01	GUIDE		1
6	505 88 93-01	GUIDE		1
7	505 71 84-01	SHAFT. COLLAR 3/4"		2
8	505 71 71-01	SPRING		1
9	505 71 72-01	BLOCK		1
10	505 71 75-01	BUSHING		1
11	505 77 49-01	GUIDE		1
12	505 71 74-01	BUSHING		1
13	505 71 73-01	BLOCK		1
14	505 71 62-01	BUSHING		1
15	505 63 20-01	WASHER		2
16	505 62 79-01	SHC 1/4-20-1 S.S.		1
17	505 62 75-01	HEX BOLT 1/4-20-3/4 S.S.		1
18	505 63 28-01	LK WASH 1/4 SPLIT SS		2
19	542 02 05-41	SHSS, .25-20 X.375 CUP HK/CONCR		2
20	505 62 80-01	SHC 1/4-20-1 1/4 S.S.		1
21	505 72 89-01	SHC 1/4-20-2 S.S.		1
22	505 62 78-01	SHC 1/4-20-3/4 S.S.		2
23	505 62 86-01	FHS 1/4-20-3/4 S.S.		4
24	505 77 57-01	RUBBER BUMPER FOR GUIDE		1
25	505 77 17-01	SHSB 1/4 X 7/8		1
26	505 63 04-01	NYLOC NUT #10-24 CAD.PL.		1
27	505 61 42-01	DISC		1

Go to Discount-Equipment.com to order your parts

**Y** SOFF CUT X5000  
HOOD ASSEMBLY



Go to Discount-Equipment.com to order your parts

## HOOD

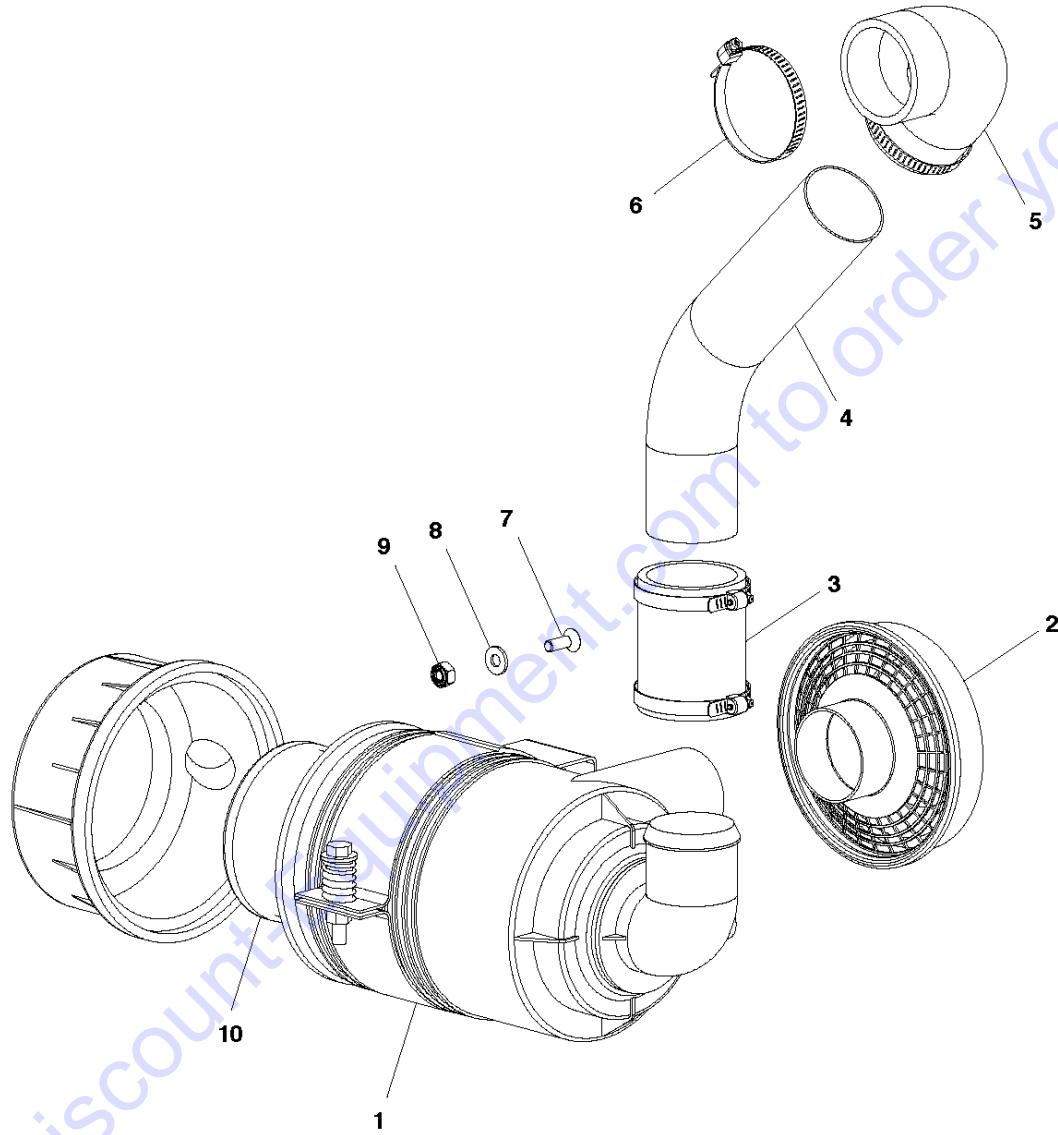
SOFF CUT 5000, 2016-11

Ref	Part No	Description	Remark	QTY KIT
1	505 65 91-01	BLOCK. REAR CORNER HOOD		2
2	505 65 92-01	BLOCK. FRONT CORNER HOOD		1
3	505 65 93-01	BLOCK. GAS SHOCK HOOD		1
4	505 65 95-01	BLOCK. HOOD LOCK		1
5	505 65 96-01	ARM. HOOD LOCK		1
6	510 32 27-01	PANEL. HOOD SKIRT		1
7	505 65 97-01	PLATE. SIDE HOOD		2
8	505 65 98-01	PLATE. FRONT HOOD		1
9	505 65 99-01	PLATE. REAR HOOD		1
10	510 32 29-01	PANEL. TOP HOOD		1
11	505 66 00-01	HOOD KNOB		1
12	505 73 82-01	BALL JOINT		1
13	505 62 82-01	SHC 8-32 X 1/2 S.S.		32
14	505 63 27-01	LK WASH #8 SPLIT S.S.		32
15	505 72 99-01	FHS 10-32-1/2 S.S.		2
16	505 63 28-01	LK WASH 1/4 SPLIT SS		15
17	505 72 23-01	SHC 1/4-20-1/2 S.S		1
18	505 62 78-01	SHC 1/4-20-3/4 S.S.		14
19	505 63 20-01	WASHER		1
20	505 73 14-01	FLAT WASH 1/2 X 1 1/4 O.D. S.S		1
21	505 64 78-01	1/2" SNAP RING		1
22	510 32 56-01	SPRING. HOOD LATCH		1
23	505 75 22-01	FRONT AXLE ASSY		1
24	505 73 81-01	GAS SHOCK (HOOD)		1

Go to Discount-Equipment.com to order your parts



**C** SOFF CUT X5000  
INTAKE SYSTEM ASSEMBLY



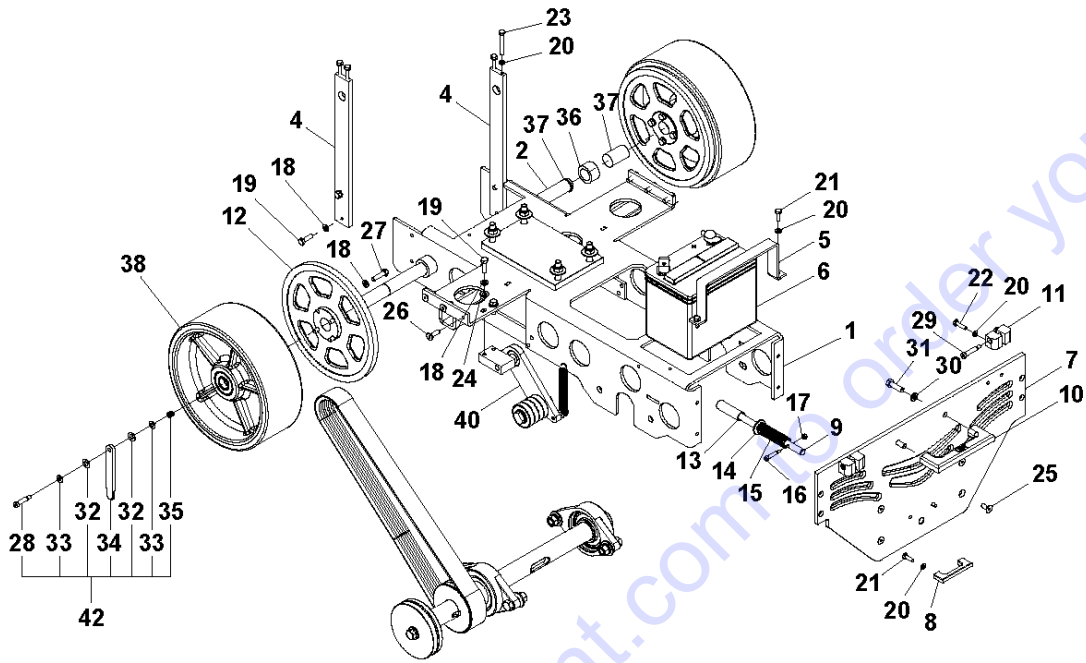
## INTAKE SYSTEM

SOFF CUT 5000, 2016-11

Ref	Part No	Description	Remark	QTY KIT
1	505 83 61-01	AIR CLEANER		1
2	505 83 63-01	HOOD		1
3	575 65 42-03	HOSE		1
4	510 32 39-01	INTAKE ELBOW		1
5	505 74 50-02	ELBOW		1
6	505 77 60-01	1 9/16--2 1/2 WORM GEAR CLAMP		4
7	505 62 86-01	FHS 1/4-20-3/4 S.S.		2
8	505 63 20-01	WASHER		2
9	539 97 69-78	NUT		2
10	505 48 23-06	FILTER		1

Go to [Discount-Equipment.com](http://Discount-Equipment.com) to order your parts

**R** SOFF CUT X5000  
MAINFRAME ASSEMBLY



Go to Discount-Equipment.com to order your parts

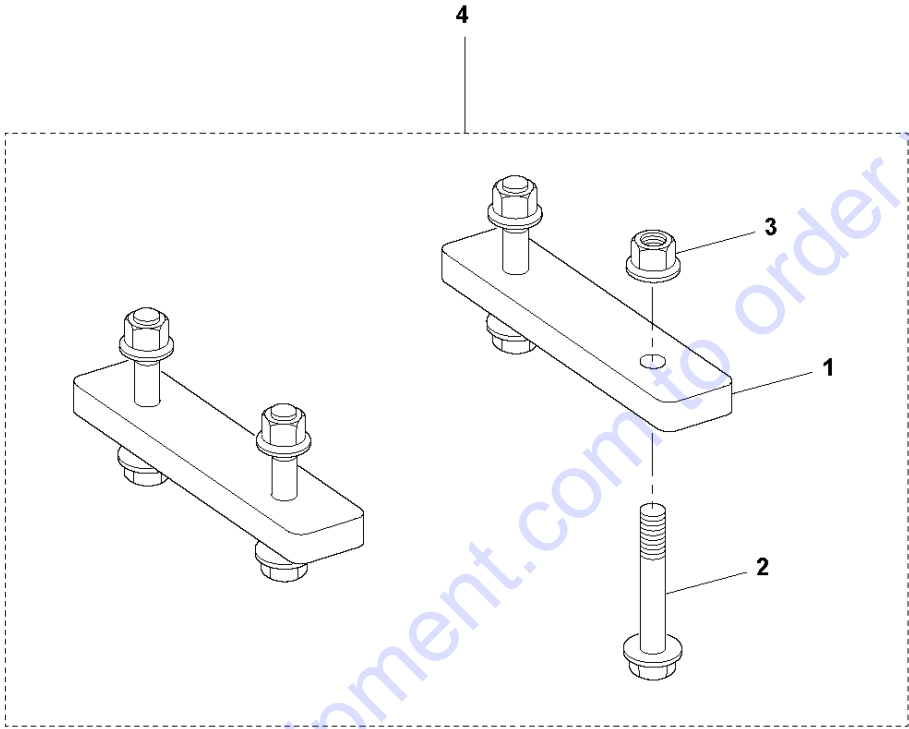
## MAINFRAME

SOFF CUT 5000, 2016-11

Ref	Part No	Description	Remark	QTY	KIT
1	505 65 70-01	MAINFRAME X5000 (SEND PRINT		1	
2	505 66 02-01	SHAFT. REAR AXLE		1	
3	505 65 69-01	ARM. CROSSBAR SUPPORT		2	
4	505 66 06-01	BRACKET. BATTERY TIE DOWN		1	
5	505 78 62-01	BATTERY		1	
6	505 66 11-01	FRONT PLATE		1	
7	505 71 42-01	GUARD ARBOR LOCK SHAFT		1	
8	505 76 43-01	ARBOR SHAFT		1	
9	505 71 69-01	HANDLES		1	
10	505 65 94-01	BLOCK. HOOD MOUNT		2	
11	505 86 98-01	REAR AXLE		2	
12	505 76 44-01	ARBOR LOCK 3/4 X 2.35		1	
13	505 73 14-01	FLAT WASH 1/2 X 1 1/4 O.D. S.S		1	
14	505 73 72-01	SPRING		1	
15	505 72 59-01	SHSB 1/4 X 1 BLK STL		1	
16	505 63 04-01	NYLOC NUT #10-24 CAD.PL.		1	
17	505 63 30-01	LK WASH 5/16 SPLIT SS		14	
18	539 99 02-09	BOLT		6	
19	505 63 28-01	LK WASH 1/4 SPLIT SS		12	
20	505 62 75-01	HEX BOLT 1/4-20-3/4 S.S.		4	
21	505 68 69-01	HEX BOLT 1/4-20 X 1 GRADE 8		4	
22	505 72 81-01	HEX BOLT 1/4-20-2 S.S. ALL THR		4	
23	539 99 01-88	WASHER		2	
24	505 62 88-01	FHS 5/16-18-3/4 S.S.		4	
25	505 73 01-01	FHS 5/16-18-1 S.S.		6	
26	505 72 84-01	HEX BOLT 5/16-18 X 1 1/4 GRADE		8	
27	505 72 67-01	SHSB 5/16 X 1 BLK STL		1	42
28	505 72 66-01	SHSB 5/16 X 1 1/4 BLK STL		2	
29	505 73 10-01	LK WASH 3/8 SPLIT SS		2	
30	539 97 69-41	SCREW		2	
31	505 63 45-01	FLAT WSHR .750X.379 X.031 DEL		2	42
32	505 72 50-01	FLT WSH 5/16 I.D. TRA 512		2	42
33	505 71 85-01	REAR AXLE		1	42
34	505 63 60-01	SPRING		1	42
35	505 66 42-01	SPACER		2	
36	542 20 62-05	SNAP RING		4	
37	505 87 10-01	WHEEL ASSY		2	
40	505 88 77-01	GX4000 REAR GUIDE ARM		1	

Go to Discount-Equipment.com to order your parts

**B** SOFF CUT X5000  
KIT, MOTOR MOUNT

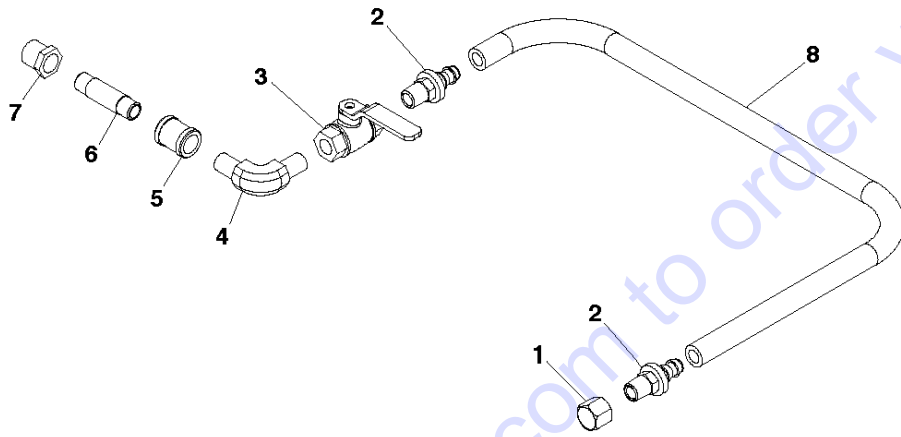


Go to Discount-Equipment.com to order your parts

Ref	Part No	Description	Remark	QTY	KIT
1	501 08 06-01	PLATE		2	4
2	581 24 33-01	SCREW EHHFM		4	4
3	576 64 57-05	NUT FLANGE		4	4
4	582 23 87-01	MOTOR KIT		1	

Go to [Discount-Equipment.com](http://Discount-Equipment.com) to order your parts

**D** SOFF CUT X5000  
KIT, OIL DRAIN



Go to Discount-Equipment.com to order your parts

## OIL DRAIN

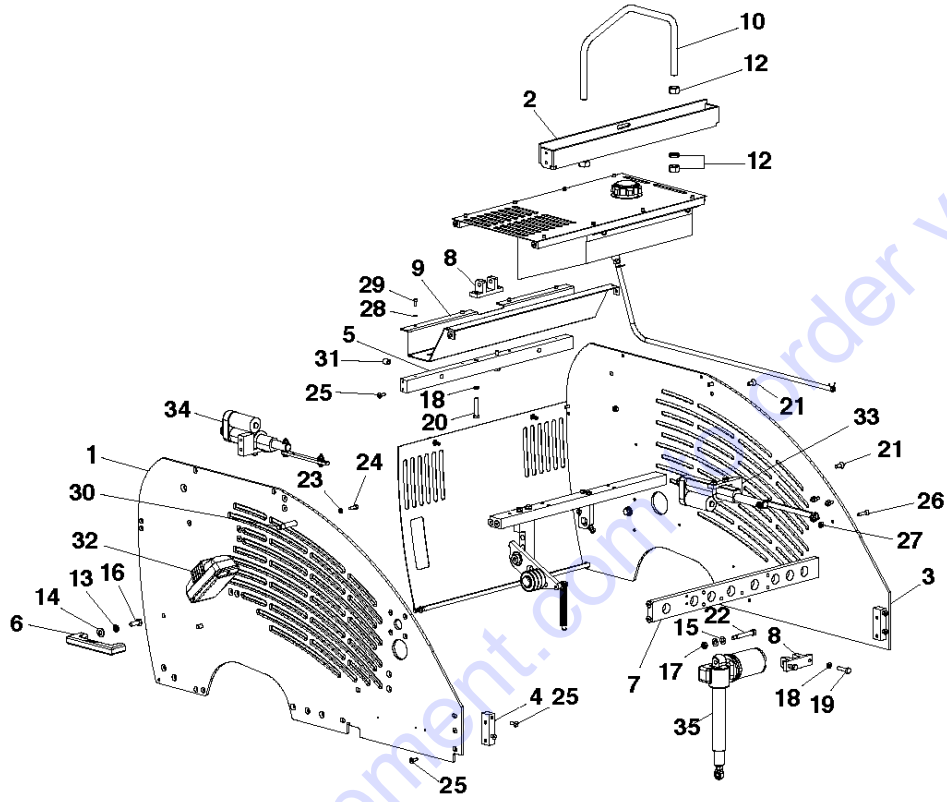
SOFF CUT 5000, 2016-11

Ref	Part No	Description	Remark	QTY KIT
1	505 77 66-01	DUST CAP FOR OIL DRAIN-RP85123		1
2	505 73 86-01	GATES 6LOC-4RMP PUSH ON FITTIN		2
3	505 73 89-01	LHA BALL VALVE BV-04N		1
4	505 73 87-01	HCI ADAPTER MP-MP90-4-4		1
5	505 79 66-01	1/4 BRASS COUPLING		1
6	505 79 65-01	1/4" X 2" BRASS NIPPLE		1
7	505 79 64-01	HEX BUSHING		1
8	505 73 85-01	GATES 6 LOLA+ 3/8 I.D. HOSE		1

Go to [Discount-Equipment.com](http://Discount-Equipment.com) to order your parts



**X** SOFF CUT X5000  
PANEL ASSEMBLY



Go to Discount-Equipment.com to order your parts

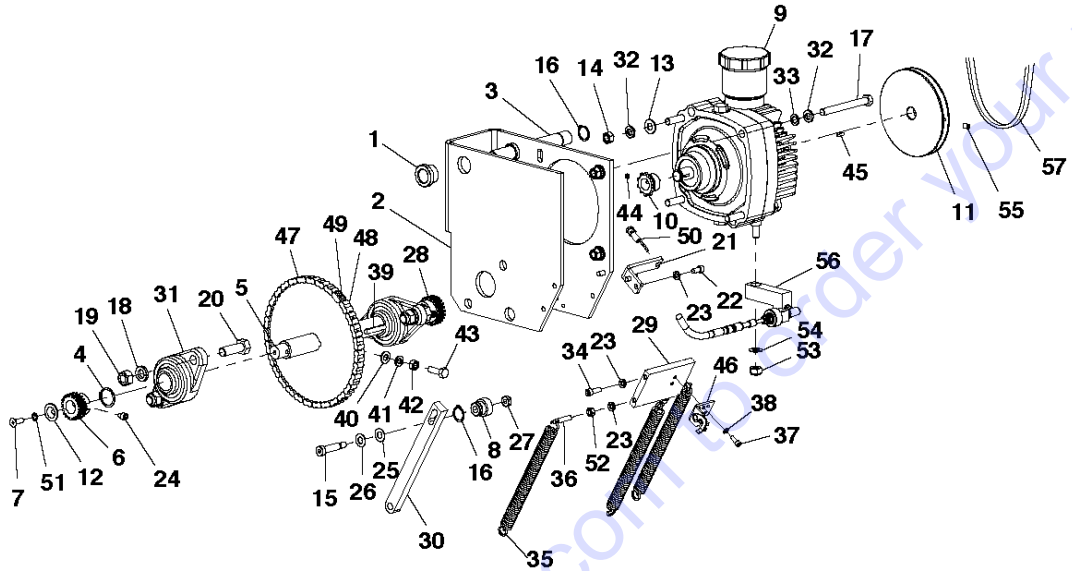
## PANEL ASSEMBLY

SOFF CUT 5000, 2016-11

Ref	Part No	Description	Remark	QTY KIT
1	505 66 10-01	SIDEPLATE. RIGHT		1
2	505 66 09-01	CROSSBAR		1
3	505 66 12-01	SIDEPLATE. LEFT		1
4	505 66 05-01	BLOCK. PANEL CORNER MOUNT		2
5	505 75 88-01	CROSS BAR REAR ACCESS		1
6	505 71 69-01	HANDLES		2
7	505 75 60-01	FRONT WHEEL SUPPORT		1
8	505 75 70-01	ACTUATOR		2
9	505 66 13-01	PANEL. REAR BIN		1
10	505 60 70-02	LIFTING HOOK		1
11	510 29 86-01	5/8-18 JAM NUT		6
12	505 73 10-01	LK WASH 3/8 SPLIT SS		4
13	510 30 10-01	WASHER		4
14	505 63 45-01	FLAT WSHR .750X.379 X.031 DEL		2
15	516 02 86-04	BOLT		4
16	53 99 07-17			1
17	505 63 30-01	LK WASH 5/16 SPLIT SS		4
18	505 72 84-01	HEX BOLT 5/16-18 X 1 1/4 GRADE		2
19	510 29 84-01	5/16-18 X 1 3/4 HEX BOLT GRD5		2
20	505 62 88-01	FHS 5/16-18-3/4 S.S.		12
21	505 62 72-01	SHSH BOLT 3/8 X 2 1/4" (WHEELS		1
22	505 63 28-01	LK WASH 1/4 SPLIT SS		1
23	505 62 75-01	HEX BOLT 1/4-20-3/4 S.S.		1
24	505 62 86-01	FHS 1/4-20-3/4 S.S.		14
25	505 77 34-01	1/4-20 X 1 1/4 FLAT SOCKET SS		4
26	539 97 69-78	NUT		6
27	505 63 31-01	LK WASH #10 SPLIT SS		4
28	505 72 96-01	SHC 10-32 X 1/2 S.S. CBL MTS		4
29	510 32 40-01	GUIDE ARM STOP		1
30	505 74 83-01	INSERT		2
31	505 75 22-01	FRONT AXLE ASSY		1
32	505 84 80-02	KIT		1
33	505 84 79-02	KIT		1
34	505 84 94-01	ACTUATOR		1

Go to Discount-Equipment.com to order your parts

**J** SOFF CUT X5000  
PUMP ASSEMBLY



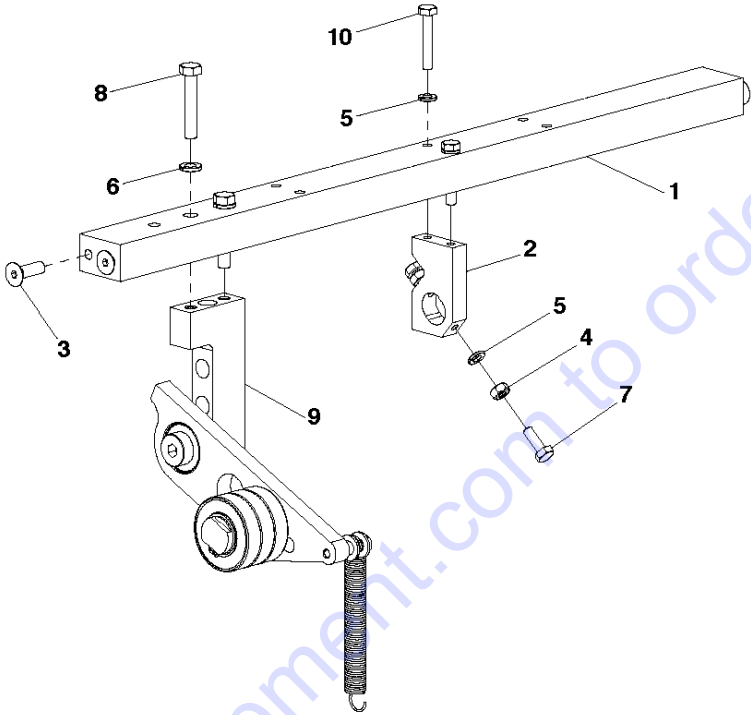
Go to Discount-Equipment.com to order your parts

## PUMP

SOFF CUT 5000, 2016-11

Ref	Part No	Description	Remark	QTY KIT
1	505 58 69-01	BUSHING		2
2	505 65 82-01	FRAME		1
3	505 65 87-01	SHAFT. PUMP PIVOT		1
4	542 20 62-05	SNAP RING		2
5	505 76 47-01	DRIVE SHAFT		1
6	505 60 24-01	S1622 SPUR GEAR		1
7	505 62 86-01	FHS 1/4-20-3/4 S.S.		2
8	505 65 88-01	BUSHING		1
9	582382801	TBD		1
10	587 65 99-01	SPROCKET		1
11	505 73 98-01	PULLEY PUMP 1/3V 5.00 X 17 MM		1
12	505 76 48-01	SS WASHER FOR DRIVE SHAFT		2
13	5339990517	TBD		4
14	539 99 01-30	NUT		4
15	505 82 07-01	SHSB 3/8 X 1 1/4 BLACK		1
16	505 73 35-01	SNAP RING		2
17	539 30 08-70	NLA HCS 3/8-16 X 3-1/2 GR 5 ZN		4
18	505 73 11-01	LK WASH 1/2 SPLIT SS		4
19	523 32 77-01	NUT JAM 1/2-13		4
20	505 82 11-01	HEX BOLT 1/2 - 13 X 1 1/2 GR 8		4
21	505 65 85-01	ARM		1
22	505 72 23-01	SHC 1/4-20-1/2 S.S		2
23	505 63 28-01	LK WASH 1/4 SPLIT SS		7
24	505 77 27-01	1/4-20 X 1/4 SHCS SS		4
25	505 63 45-01	FLAT WSHR .750X.379 X.031 DEL		1
26	505 63 42-01	FLAT WSHR.750 X .375 X .031 SS		1
27	505 63 17-01	NYLOC NUT 5/16-18 .265"HT.		1
28	505 77 70-01	1624 SPUR GEAR(BOTH SAWS)/RIGH		1
29	505 65 86-01	PLATE. PUMP SUPPORT		1
30	505 65 84-01	ARM		1
31	505 68 94-01	PUMP/DRIVE SHAFT BEARING		2
32	505 73 10-01	LK WASH 3/8 SPLIT SS		8
33	505 72 40-01	FLAT WASH 3/8 AN 960 WASHERS U		4
34	505 62 78-01	SHC 1/4-20-3/4 S.S.		2
35	505 77 52-01	5460 SPRG FOR PUMP TENSIONER		3
36	505 77 45-01	SPRING ANCHORS		3
37	505 72 96-01	SHC 10-32 X 1/2 S.S. CBL MTS		2
38	505 63 31-01	LK WASH #10 SPLIT SS		2
39	510 31 81-01	KEY		1
40	539 99 01-88	WASHER		1
41	505 63 30-01	LK WASH 5/16 SPLIT SS		1
42	505 73 24-01	NUT		1
43	539 99 02-09	BOLT		1
44	542 02 05-41	SHSS,.25-20 X.375 CUP HK/CONCR		1
45	539 30 07-49	KEY		2
46	505 66 64-01	BRACKET		1
47	505 73 94-01	SPROCKET		1
48	587 70 66-01	KIT		1
49	505 73 96-01	CONNECTING LINK #35		1
50	505 75 43-01	PROX SWITCH FPM/LINEAR FT - CE		1
51	505 68 62-01	1/4 COUNTERSUNK EXT LOCKWASHER		2
52	505 63 19-01	JAM NUT 1/4-20 STAINLESS STEEL		3
53	539 97 69-79	NUT		1
54	505 63 42-01	FLAT WSHR.750 X .375 X .031 SS		1
55	542 02 05-41	SHSS,.25-20 X.375 CUP HK/CONCR		2
56	505 86 23-01	X5000 SPEED CONTROL KIT		1
57	505 48 40-03	BELT		1

**S** SOFF CUT X5000  
PUMP CROSSBAR ASSEMBLY



Go to Discount-Equipment.com to order your parts

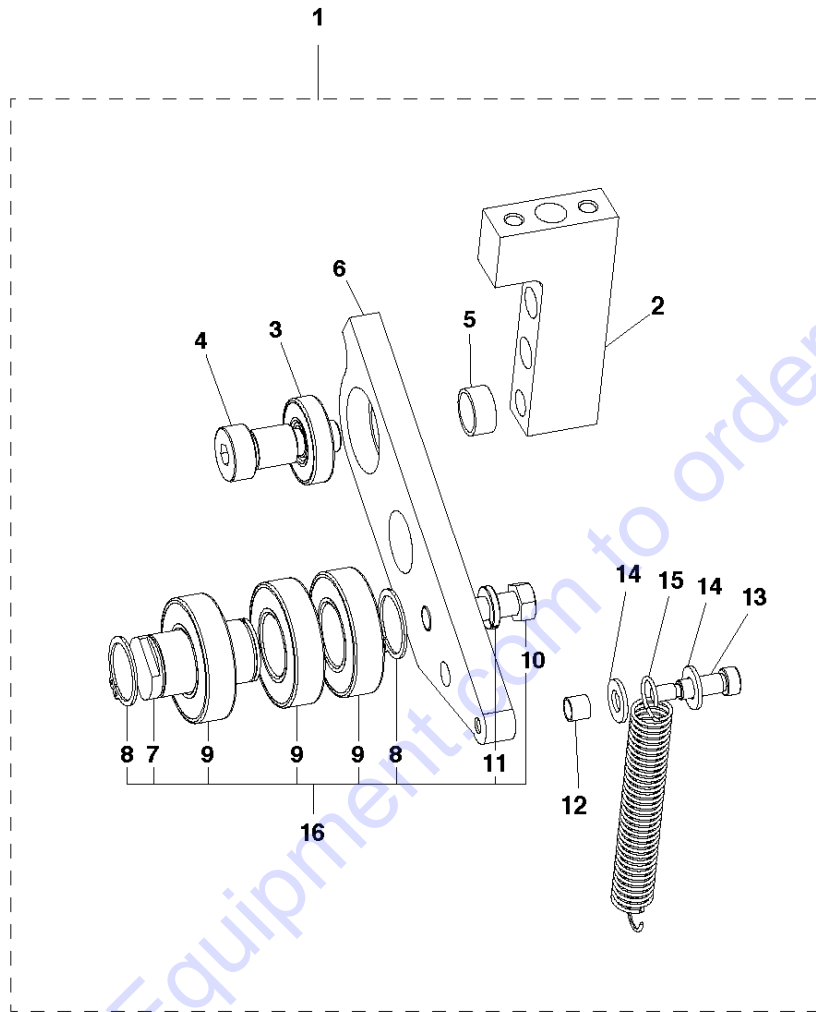
## PUMP CROSS BAR ASSEMBLY

SOFF CUT 5000, 2016-11

Ref	Part No	Description	Remark	QTY KIT
1	505 66 07-01	CROSSBAR		1
2	505 65 83-01	BLOCK. PUMP PIVOT		1
3	505 73 01-01	FHS 5/16-18-1 S.S.		4
4	505 63 19-01	JAM NUT 1/4-20 STAINLESS STEEL		2
5	505 63 28-01	LK WASH 1/4 SPLIT SS		4
6	505 63 30-01	LK WASH 5/16 SPLIT SS		2
7	505 62 75-01	HEX BOLT 1/4-20-3/4 S.S.		2
8	510 29 84-01	5/16-18 X 1 3/4 HEX BOLT GRD5		2
9	510 27 18-01	ASSEMBLY		1
10	505 72 83-01	HEX BOLT 1/4-20 X 1 1/4" ALL T		2

Go to [Discount-Equipment.com](http://Discount-Equipment.com) to order your parts

**F** SOFF CUT X5000  
PUMP IDLER PULLEY



Go to Discount-Equipment.com to order your parts

## PUMP IDLER PULLEY

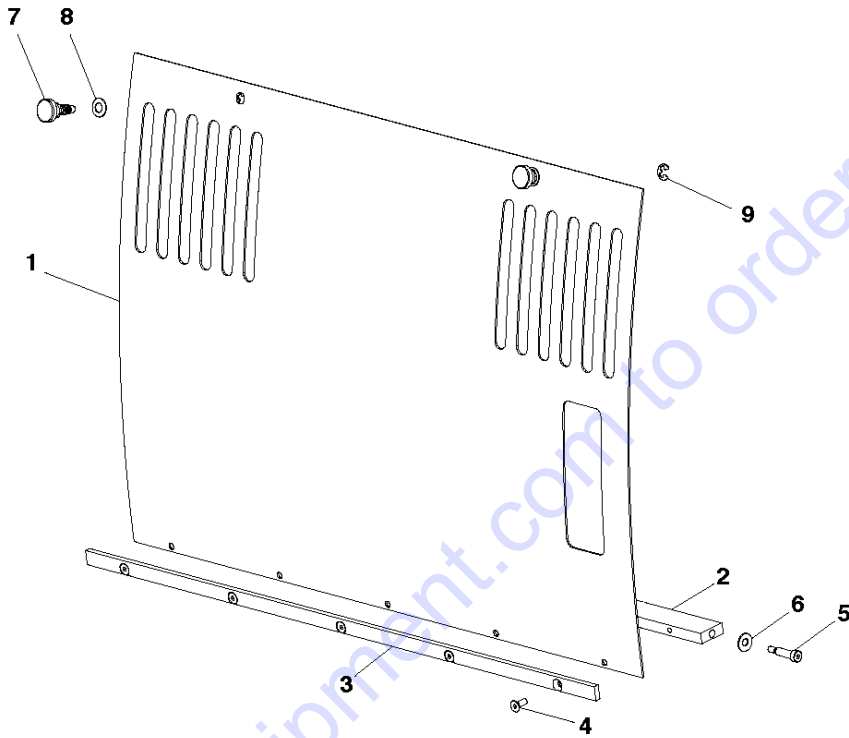
SOFF CUT 5000, 2016-11

Ref	Part No	Description	Remark	QTY KIT
1	510 27 18-01	ASSEMBLY		1
2	505 71 44-01	MTG BLOCK PUMP IDLER PULLEY		1
3	505 73 60-01	PULLEY		1
4	505 72 62-01	SHSB 5/8 X 3/4 BLK STL		1
5	505 71 46-02	SPACER		1
6	505 70 69-01	PUMP ARM IDLER PULLEY		1
7	505 70 68-01	BLADE		1
8	542 20 62-05	SNAP RING		2
9	505 73 63-01	WHEEL		3
10	505 79 58-01	HEX HD 3/8-16X1 1/2 GR 8		1
11	505 73 10-01	LK WASH 3/8 SPLIT SS		1
12	505 71 79-01	BUSHING.G.A.(.315 SPACER)		1
13	505 72 64-01	SHSB 5/16 X 3/4 BLK STL		1
14	539 99 01-88	WASHER		2
15	505 77 46-01	PUMP		1
16	505 48 34-01	PULLEY		1

Go to Discount-Equipment.com to order your parts



**T** SOFF CUT X5000  
REAR ACCESS ASSEMBLY



Go to Discount-Equipment.com to order your parts

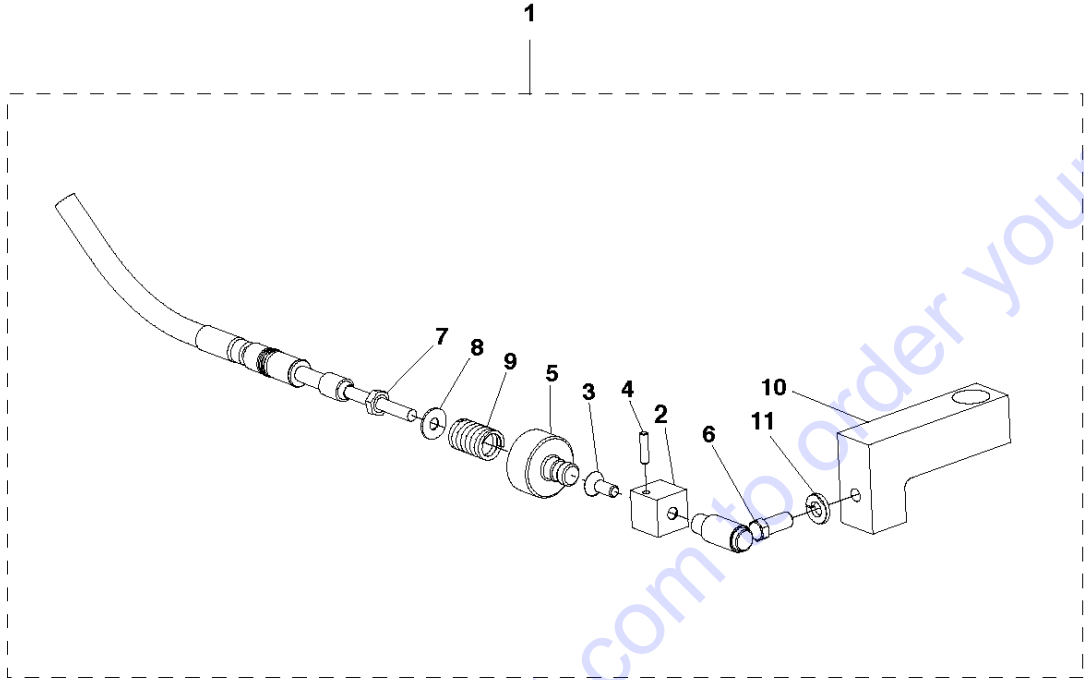
## REAR ACCESS ASSEMBLY

SOFF CUT 5000, 2016-11

Ref	Part No	Description	Remark	QTY KIT
1	505 79 16-01	REAR AXLE		1
2	505 66 08-01	CROSSBAR		1
3	505 76 71-01	BACK PANEL BRACE		1
4	505 72 99-01	FHS 10-32-1/2 S.S.		5
5	505 72 58-01	SHSB 1/4 X 3/4 BLK STL		2
6	505 63 44-01	WASHER		2
7	505 53 63-01	KNOB		2
8	505 53 64-01	WASHER		2
9	505 53 65-01	E-CLIP		2

Go to [Discount-Equipment.com](http://Discount-Equipment.com) to order your parts

**K** SOFF CUT X5000  
SPEED CONTROL CABLE



Go to Discount-Equipment.com to order your parts

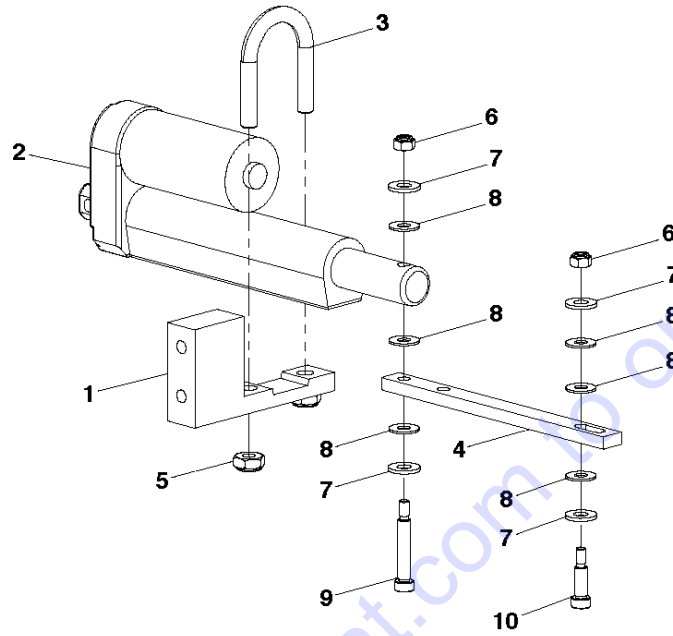
## SPEED CONTROL

SOFF CUT 5000, 2016-11

Ref	Part No	Description	Remark	QTY	KIT
1	505 86 23-01	X5000 SPEED CONTROL KIT		1	
2	505 65 89-01	CONTROL CABLE		1	1
3	505 72 99-01	FHS 10-32-1/2 S.S.		1	1
4	505 63 37-01	PRECISION DOW PIN STL 1/8 X 1/		1	1
5	505 65 90-01	FITTING		1	1
6	505 82 35-01	BALL JOINT		1	1
7	505 82 30-01	CONTROL CABLE		1	1
8	505 72 53-01	.500 OD X .190 ID X .030 THICK		1	1
9	505 77 51-01	#510 SPRG FOR STUD/SPD CTRL		1	1
10	505 71 49-01	PUMP CONTROL ARM GS1000 & G20		1	1
11	505 63 28-01	LK WASH 1/4 SPLIT SS		1	1

Go to [Discount-Equipment.com](http://Discount-Equipment.com) to order your parts

**V** SOFF CUT X5000  
KIT, THROTTLE ACTUATOR



Go to [Discount-Equipment.com](http://Discount-Equipment.com) to order your parts

## THROTTLE CONTROLS

SOFF CUT 5000, 2016-11

Ref	Part No	Description	Remark	QTY	KIT
1	505 79 24-01	ACTUATOR		1	2
2	505 84 79-02	KIT	Complete Throttle Actuator	1	
3	575 42 13-01	CLAMP		1	2
4	505 79 22-01	THROTTLE EXTENSION		1	2
5	505 63 17-01	NYLOC NUT 5/16-18 .265"HT.		2	2
6	505 63 04-01	NYLOC NUT #10-24 CAD.PL.		2	2
7	505 63 20-01	WASHER		4	2
8	505 63 44-01	WASHER		4	2
9	505 81 17-01	SHSB 1/4 X 1 1/4		1	2
10	505 72 57-01	SHSB 1/4 X 5/8 BLK STL		1	2

Go to [Discount-Equipment.com](http://Discount-Equipment.com) to order your parts

# PARTS FINDER

**Search Website  
by Part Number**



**Search Manual  
Library For Parts  
Manual & Lookup Part  
Numbers – Purchase  
or Request Quote**

**Search Manuals**

Enter your information to search for a manual or parts manual for your part.

\* Brand:

\* Model:

\* Serial:

\* Part Number:

SEARCH

**Can't Find Part or  
Manual? Request Help  
by Manufacturer,  
Model & Description**

**Parts Order Form**

Please fill in the following information to request help finding a part or manual.

Manufacturer:

Model:

Description:

Quantity:

Part Number:

Part Name:

Part Description:

Part Location:

Part Condition:

Part Status:

Part Color:

Part Material:

Part Weight:

Part Dimensions:

Part Price:

Part Availability:

Part Lead Time:

Part Notes:

Submit

Discount-Equipment.com is your online resource for quality parts & equipment.

Florida: **561-964-4949** Outside Florida TOLL FREE: **877-690-3101**

**Need parts?**

Click on this link: <http://www.discount-equipment.com/category/5443-parts/> and choose one of the options to help get the right parts and equipment you are looking for. Please have the machine model and serial number available in order to help us get you the correct parts. If you don't find the part on the website or on one of the online manuals, please fill out the request form and one of our experienced staff members will get back to you with a quote for the right part that your machine needs.

We sell worldwide for the brands: Genie, Terex, JLG, MultiQuip, Mikasa, Essick, Whiteman, Mayco, Toro Stone, Diamond Products, Generac Magnum, Airman, Haulotte, Barreto, Power Blanket, Nifty Lift, Atlas Copco, Chicago Pneumatic, Allmand, Miller Curber, Skyjack, Lull, Skytrak, Tsurumi, Husquvarna Target, Stow, Wacker, Sakai, Mi-T-M, Sullair, Basic, Dynapac, MBW, Weber, Bartell, Bennar Newman, Haulotte, Ditch Runner, Menegotti, Morrison, Contec, Buddy, Crown, Edco, Wyco, Bomag, Laymor, EZ Trench, Bil-Jax, F.S. Curtis, Gehl Pavers, Heli, Honda, ICS/PowerGrit, IHI, Partner, Imer, Clipper, MMD, Koshin, Rice, CH&E, General Equipment, Amida, Coleman, NAC, Gradall, Square Shooter, Kent, Stanley, Tamco, Toku, Hatz, Kohler, Robin, Wisconsin, Northrock, Oztec, Toker TK, Rol-Air, APT, Wylie, Ingersoll Rand / Doosan, Innovatech, Con X, Ammann, Mecalac, Makinex, Smith Surface Prep, Small Line, Wanco, Yanmar